

# Annual Report

1st April 2022 to 31st March 2023

## Because Childhood Can't Wait

**HOME  
START**

**Telford &  
Wrekin**



## Contents

	Page No.
Chair's Report	1
Manager's Report: Caia Bryant-Griffiths	2
Senior Co-ordinator's Report: Vikki Thomas	3
PR & Fundraising Lead's Report: Sharon Uppal	4
Public Benefit Report	5
A Taste of Home-Start—feedback	6
Objectives for 2023/2024	7
The Home-Start Telford & Wrekin Family	8
Who were our Supporters?	Inside back cover
<b>Contact us</b>	Back cover

### Mission Statement

Home-Start offers support, friendship and practical help to parents with young children in local communities throughout the UK and with British Forces in Germany and Cyprus.

Home-Start offers a unique service. We recruit and train volunteers who are usually parents themselves, to visit families with at least one child under 5, at home, and offer them informal, friendly and confidential support. We also support through groups.

### Introduction

Home-Start Telford & Wrekin has been supporting local families for 34 years this year; we provide a core home-visiting service, self-esteem courses, mental health support drop-ins, teenage parent support and parent and child groups. The core service of Home-Start is to provide weekly home visits to young families under pressure to give parents the support they need to give their children the best possible start in life. We work with carefully selected, vetted, and trained volunteers who are matched with parents to provide friendship and emotional and practical support. In addition to volunteer and group support we have active social media channels providing information and signposting to other sources of help.

This report was adopted by Trustees on 26th September 2023

Signed: 

Catherine Landau, Chair, on behalf of Trustees

## Chair's Report

For the year ending 31<sup>st</sup> March 2023

### Home-Start Telford & Wrekin – changing times continue ...

It can be hard to separate the years, whether it be the ongoing activities, when new ones started, or the impacts of the stressors in the economy having escalated. However, it makes the supporting work of our Home-Start even more critical for families, and I'm especially proud of all our staff and volunteers, who have continued to give of their time, energy, and commitment to respond to the ever -growing needs. So I'm also taking the opportunity to thank again the volunteers to whom we awarded the **Tracy Chilton Award** at the AGM. This annual award, in memory of our Clerical Assistant, Tracy Chilton, is to acknowledge outstanding service from Home-Start volunteers, and this time we decided to make the award to several of them: **Wendy Holton:** Home-Start Telford & Wrekin's longest serving, active, family support volunteer, and her support to staff with various tasks. **Elysia Davison:** in supporting individual families, facilitating courses, groups, and helping staff with various tasks. **Pat Murray and Sandra Ashton-Cox:** for their facilitating of family groups at Hadley Learning Community. **Mel Ward:** for her long service of 8 years on the Trustee Board. Her calm overview of issues and constructive perspectives have been invaluable.

This year we've had a range of changes in the Home Start Telford & Wrekin family:

**Trustees:** Deborah Knight, our newest Trustee at the time, stepped down due to family commitments changing, but we had 2 Trustees join – Jen Morris: already known to some as a home volunteer, who is emerging as a budding social events planner too, and Lisa Oosthuizen - who also valiantly stepped into being our Treasurer (thank goodness!).

**New staff member:** Elysia Davison joined us in January, and in a new role co-ordinating supporting new mums in Telford and Oswestry to stay quit from smoking since in pregnancy.

**A changing role:** Sharon now has a dual role too, to develop our public relations and marketing ... I can barely imagine the heights her enthusiasm and energy will take us to!

**New volunteers:** who have undertaken the training and are being matched to families: thank you - you are the lifeblood of our service ... and we are happy to welcome more of you!

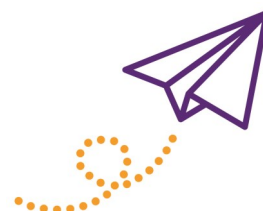
Have you noticed the development pathways of some of our volunteers to trusteeship and role development? We have many ways you can contribute that are always good on a CV too!

**A goodbye to Jacqui Seymour:** who has been our T&W Council member on the Management Committee for several years, sadly stepped down at the end of January. We have been very fortunate to have Jacqui, who consistently attended, contributed and supported our efforts.

**Reviews of governance, raising our profile** – the former, not the most exciting topic perhaps, but vital to our stability and ensuring we're at strength to continue flourishing and included ensuring we met the requirements of the new Home Start UK agreement. Building up partnerships are developing with 'Unlocking Potential in Telford' (UPiT), and we applied for the (now) King's Award for Voluntary Service: good news on these next year we hope!

Our funds are in a healthy state again this year, for which our continued thanks go to Caia, our manager, for additional successful bids, and from Sharon, within her new role. However, we continue to plan to secure longer term, and sustainable, funding, combined with continued support from local sources: you remain invaluable, and my enormous thanks go to you all.

Catherine Landau





## Manager's Report

For the year ended 31st March 2023

2022 -23 has been a year of consolidation of structural changes and development work. One of our developments from last year was a new PR and fundraising post to promote our work, increase our network of supporters and bring new funds in—all essential for developing our presence and ensuring that we are here for the long term. This work has gone extremely well but is still in its infancy and Sharon Uppall, our PR/FR lead postholder, has ambitious plans for this year and beyond which will massively increase our profile and bring new sources of funding in.

Development support from Lloyds Foundation continued with a consultant who worked with trustees to review their skills, interests and how they can best support the Board. The consultant was very impressed with the current Board; her in-depth work has been very useful and has resulted in a comprehensive action plan to further improve engagement and productivity.

Family work has been busy as always and the difference we can make to families under stress is what makes our work so rewarding. Our groups are once again thriving and our 'Me Time' low mood group and 'Something More' courses have produced excellent, inspiring outcomes for families. Hybrid working continues to be part of our support portfolio and we have an active minimal support triage service to provide support to families waiting to be matched with volunteers. Our new family support staffing structure is working well.

A meeting at the end of March brought exciting news about contributing to the new Family Hubs with teenage parent work and an invitation to quote for 2 new drop-in groups in the north of the borough and a dads group. The Children's Centre that we run at HLC will also become a Family Hub later in the year.

In December we finally agreed a project plan with Health to work with postnatal smoking cessation; we recruited a new member of staff, Elysia Davison, to deliver this project as well as having some hours to support more families with core support. Elysia is an ex-volunteer who previously worked as an antenatal smoking cessation support practitioner for the health service, so she has slipped into the role seamlessly and is a valued new member of the team.

Zoom continues to be a useful tool for meetings and some volunteer supervisions; management/trustee meetings now convene using a mix of face-to-face and Zoom to meet the needs of all. Last year saw our first use of remote volunteer training as there is now an online volunteer preparation course – this is combined with face-to-face meetings so we can still get to know the volunteers (essential for matching with families).

Our other major technology focus has been driven by a need for a Customer Relationship Management system, we have obtained some funding towards this and have carried out a thorough analysis of our data; we are now at the stage of choosing provider.

Networking continues to be a big part of my work and I attend a number of council and health Boards/meetings as well as VCS groups – some online and some face-to-face.

Home-Start UK have updated their Quality Assurance programme and we are among the first schemes to be assessed under the new system. There have been some inevitable issues/glitches and feedback has brought some changes which will benefit future local Home-Starts assessed under the system. We had to submit our desk top evidence by the end of March – this was very time consuming, and the system was laborious, but we met our deadlines; we are now waiting for stage 2 which includes interviews – this has been delayed due to calendar clashes and staff changes at Home-Start UK.

Our staff team, family support volunteers and trustees have, as always, been incredible in their hard work in support of each other and our vital work – thank you to all of them!

**Caia Bryant-Griffiths**

## Senior Co-ordinator's Report

For the year ended 31st March 2023

I always find it difficult to produce a report that focuses on the previous year, as we all naturally tend to concentrate on our latest families, projects, and groups, but a quick flick through my diary reminded me what a busy year it was.

We began the year part way through a Something More Course in Brookside. As always, it was rewarding watching the women on the course develop more confidence, improve their communication skills, learn to set boundaries and goals, and generally develop strategies to increase their happiness. For example, one participant explained on week one that she had never left her daughters with anyone before, not even her husband or mother, due to her anxiety. As the weeks went on, through gently challenging what fears were real, what was true, what was important, she began to make real changes in her life. Towards the end of the course, she told me that she and her husband had been to a friend's wedding, staying over at the hotel while the children stayed at their grandma's! We were all so proud of her, but best of all, she felt proud of herself. Later in the year we held two more equally successful courses, one in Hadley and one in Sutton Hill, and again, it was an absolute privilege to watch these women develop their confidence and self-esteem. Participants from these groups have kept in touch with each other and have said that the course has changed their view of the world. Some of them continued to meet at our Me Time group, which offers them time to focus on things they enjoy, rather than their everyday responsibilities. The way this group have bonded and support each other is incredible.

We also started the year part way through a Volunteer Preparation Course which was held in the training room at CAB. Those of you who know me well can imagine how I felt when I was told to surrender my beloved flip chart for a smart screen, but I'm completely converted! To be able to share documents and websites in a few clicks was a revelation! The lovely new volunteers were very patient with me and SUPERSHARON was also on standby in case of IT emergency! By the time the Autumn Prep Course arrived, we were even managing to have zoom participants joining some sessions simultaneously!! Obviously, welcoming such a great group of new volunteers to the team is the biggest win of all, but it was probably time I joined the 21<sup>st</sup> century!

Our volunteers continue to provide bespoke emotional and practical support to their families with passion and dedication, going the extra mile to help nurture and support in a way that is truly awe inspiring. Whether it is supporting an individual family, groups, courses or working as a Trustee, we are truly grateful for all their hard work and are very much aware that without them, there is no Home-Start Telford & Wrekin.

In January Elysia joined us to work on a health project. Her skill with families, as well as her warmth and good humour, have already made her a valued colleague and friend.

In conclusion, it's been another very busy, successful year and I'd like to express my personal thanks for your support in making this happen.

**Vikki Thomas**





## PR & Fundraising Lead's Report

For the year ended 31st March 2023

Well, it's been a truly busy year since taking on my new role as PR & Fundraising Lead with Home-Start Telford & Wrekin, and I must say, I've loved every second of it! I've been working on building relationships with local stores and businesses to help raise our profile as an organisation. This is something I will be prioritising in my second year, as there is a lot of work still to be done.

Throughout the year we had various organisations hosting fundraising events for us, with Nuffield Health, Telford, raising over £1,600 from a 4-hour Spinathon - a phenomenal amount raised! Home-Start also participated in the Christmas Charity Wrap at Telford Town Centre in December, and we couldn't have done it without the help of our wonderful volunteers, Trustees, local businesses, and TCAT. It was truly heartwarming to see everyone come together for such a great cause, even if it was one of the most stressful weeks of the year for me!

I am so proud of our amazing team of 9 runners, including the incredible Elysia, who all completed the challenging Ironbridge Half-Marathon in March, whilst representing Home-Start and raising vital funds for our cause — their dedication and perseverance on race day was truly inspiring, especially considering the gruelling hills that come after mile 8! We couldn't have asked for a better group of individuals to represent us, and I will be forever grateful for their support and commitment.

Even though I have largely stepped away from family work, I continue to run the Teenage Parent 'Me Time' drop-in group. This year, unfortunately, attendance at the group decreased and so the decision was made to relocate to a more central location to make it easier for parents to get to. The group means a lot to me personally and I'm hopeful that the new location will attract more attendees and continue to provide support to teenage parents.

I am eagerly looking forward to next year and have big plans to build on this year's successes and look at ways for growth both online and with corporate partners. Witnessing the remarkable things we can accomplish through collaboration is truly inspiring!

I would like to give a big shout out to our amazing volunteers who have been such an incredible support to me this past year. I would also like to extend my gratitude to our Trustees and the staff team who always offer advice, encouragement and cheer me on when I need that extra push!

However, first I need to put on my running trainers and Home-Start t-shirt for the London Landmarks Half Marathon on 2nd of April 2023, along with my fellow running buddies Paula, Jane, and Deb's. I am feeling both excited and nervous about the race, but I'm determined to do my best and wave the flag for Home-Start. Wish me luck!

### Sharon Uppal





## Public Benefit Report

For the year ended 31st March 2023

The following is a report illustrating how our work this year has related to our constitutional objectives:

The objects for which Home-Start is established are:

- a) To safeguard, protect and preserve the good health, both mental and physical of children and parents of children.

*In order to meet this object all volunteers and staff are vetted and comprehensively trained. Training is refreshed annually. Volunteers are carefully matched, supported and supervised. Families are supported with a range of issues and our work is aimed at promoting wellbeing – both mental and physical. Our National Lottery funded Parents Matter project supports families with issues of isolation, mental and physical health problems and domestic abuse. Home support visits are supplemented by 'Me Time' groups where mothers' experiencing low mood/mental health issues can meet and talk. The format for these groups includes exercises to improve mental health and self esteem, and talks by relevant professionals. Our Children in Need funded Teenage Parents' Project provides group support to teenage parents and their babies as well as helping them to get out and access appointments and community facilities. Newly referred families receive telephone/online support in the interim between referral and the placement of a home-visiting volunteer, ensuring families are supported from the outset. We also deliver Something More Self Esteem Courses for vulnerable women.*

- b) To prevent cruelty to or maltreatment of children.

*As above plus we maintain effective working relationships with other professionals in the sector. We attend safeguarding and family support meetings, and the manager sits on the Safeguarding Children Board.*

- c) To relieve sickness, poverty and need amongst children and parents of children.

*We signpost and accompany families to access specialist financial advice plus we help them think about ways to maximise their income, including introduction to community grocery stores and cooking on a budget. We access grants for items such as fridges and cookers, plus have accessed holidays and summer days out for some families. Donations of food hampers, and items such as shoes and slow cookers are distributed to those most in need. Families are supported with medical issues and appointments and a healthy lifestyle is encouraged.*

- d) To promote the education of the public in better standards of child care within the area of Telford & Wrekin and its environs.

*The needs of the child are paramount throughout Home-Start's work.*

*Our volunteer preparation courses include content on 'Meeting the Needs of Children'. All staff and volunteers model and encourage positive interaction with children. All groups and courses aim to offer support and information to enhance parents' skills in raising their children.*

The charity's Trustees have paid due regard to the Charity Commission guidance on public benefit in deciding what activities the charity should undertake.

## A Taste of Home-Start Support

### HLC family became volunteer:

"I feel Home-Start really provide an invaluable service to support families and I have started my journey to volunteer at this organisation so I could help others. The prep course, I have begun will allow me to volunteer on completion. I am very keen to give something back to the organisation that really helped me. Due to my life experiences, I feel I would be able to help those in difficult and challenging situations. I have volunteered previously for good causes, but I think this organisation will allow me to make a real difference to families."

### Professional:

#### Strengthening Families Worker:

Email received following the Something More Course held 11<sup>th</sup> Jan – 29<sup>th</sup> March 2023:

"Thank you for the delivery of a fabulous course, the ladies I put forward absolutely loved the course and their confidence is obvious to see now, they are getting involved in things they wouldn't of done previously, so great job, and well delivered" ... "thank you for all your hard work, it has made a great impact on some wonderful people."

### Something More course participants:

"This course helped me to identify and re-enforce my boundaries. I now know how to make myself heard and understood if things upset me."

"The course has given me a safe space to discuss my insecurities and helped me to gain confidence."

"This course has helped me to deal with aggressive or abusive people, I am now able to stand up to them and challenge their behaviour."

"Being a mum, I felt I'd lost my identity but I've remembered who I am!"

### Me Time Group participants supporting one-another:

16.01.23

"Today in the group, one mum shared that although her children were born in this country, she didn't currently have a 'right to remain'. Another mum said, "Oh yes, this happened to my partner, you can look at the information on the gov.uk website". She then found it on her phone and showed it to the mum. Mum explained, "I already have the forms but I can't do it by myself". The other mum quickly found the number for an organisation who could support with this and gave it to the mum."

### Family 1524:

"I just wanted to say thank you to you and Home-Start, it's been such a positive experience. I have never felt as comfortable with anyone else around myself and my child, but I felt completely at ease, so thank you so much."





## Objectives for 2023/2024

Expand our service to support more families under stress with a variety of service provision.

Recruit a marketing and communications Champion

Family Hub work:

- Develop/expand our teenage parent work
- Start a dads group
- Open two new groups in the north of the borough
- Promote/develop HLC as a Family Hub

Choose and put in place a new Customer Relationship Management system and improve data collection/analysis to enable impact and outcomes to be easily articulated

Develop a succession plan

Further develop our use of IT systems/social media and train staff

Continue to diversify funding and raise sufficient income to maintain and increase service levels

Recruit quality staff, as needed, to meet expansion

Recruit and train enough new volunteers each year to meet service needs

Review staffing structure

# The Home-Start Telford & Wrekin Family

For the year ended 31st March 2023

## Home-Start UK

for legal guidance, quality resources, training, policies, Quality Assurance etc

## 152 families

(home-visited, Something More courses, Me Time groups, Teenage Parent group and Chatterbox and Playing Together groups). Some families access more than one project.

## Volunteers

Bernice, Brenda, Caroline, Charlotte, Claire F, Claire R, Courtney, Deanne, Donna, Elysia, Fiona, Hannah, Jen, Jude, Laura, Leeann, Linda, Lisa O, Lisa P, Liz, Margaret, Maryke, Michelle, Pat, Rebecca, Richard, Samantha, Sandra, Sara, Sarah H, Sarah J, Saranjit, Tanya, Tina, Wendy

## Staff Team

**Caia Bryant-Griffiths**, Manager  
**Vikki Thomas**, Senior Co-ordinator  
**Sharon Uppal**, Co-ordinator/Fundraiser & PR Lead  
**Donna Sayer**, Family Support Practitioner  
**Elysia Davison**, Family Support Practitioner  
**Heidi Carter**, Administrator & Project Co-ordinator  
**Naomi Calabrese**, Charity Administrator

## Management Committee

Cathy Landau, Trustee, Chairperson  
Andrea Cole, Trustee  
Lynn Howarth, Trustee  
Lois Kim, Trustee  
Deborah Knight, Trustee—resigned 26/09/2022  
Jen Morris, Trustee  
Lisa Oosthuizen, Trustee  
Linda Sabini, Trustee  
Katie Shoosmith, Trustee—resigned 24/11/2022  
Mel Ward, Trustee  
Gayle Desouza, Health Representative  
Cllr Jacquie Seymour, Telford & Wrekin Council

## Professional Services

**Independent Examiner**—Hilary Payne

**Bankers**—CAF Bank Ltd, 25 Kings Hill Avenue, Kings Hill, West Malling, Kent, ME19 4JQ  
Unity Trust Bank plc, 4 Brindley Place, Birmingham, B1 2JB

**Insurers**—Zurich Insurance plc, The Zurich Centre, 3000 Parkway, Whiteley, Fareham, Hampshire, PO15 7JZ

**Accountant**—Stephanie James

Home-Start Telford & Wrekin is a charitable company limited by guarantee which is governed by Memorandum and Articles of Association. A Board of Trustees is responsible for the Governance and management of the charity and employ a team of staff to recruit and train a team of volunteers who deliver support to families. New Trustees are recruited to the Board after consideration of an application form, references and Trustee Declaration and are subject to relevant checks. Trustees receive their initial training through an induction process where they meet with the Chairperson and staff and are provided with a range of information regarding the Charity including a full set of Policies and Procedures. All Trustees are offered the opportunity to attend induction training with Home-Start UK as well as on-going opportunities for both in-house and Home-Start UK in-service training.

## Who were our Supporters?

For the year ended 31st March 2023

Sincere thanks to all the organisations and individuals who supported Home-Start Telford & Wrekin in various ways over the past financial year, including Fundraising Lead **Sharon Uppal** and her incredible recruits who took part in challenge events.

The Asda Foundation  
Barratt Homes  
Children in Need  
Baron Davenport's Charity  
Roy Evans  
The Lady Forester Trust  
Dean Harris  
Home-Start UK  
Lynn Howarth  
The Ironmonger's Company  
John Lewis Partnership  
C Kaur  
Catherine Landau  
Lawley & Overdale Parish Council  
Guy Lewis  
Lloyds Bank Foundation  
Madeleys Surveyors  
The Millichope Foundation  
The National Lottery  
Rotary Club of Wellington  
Donna Sayer  
Stirchley & Brookside Parish Council  
David Thomas  
Vikki Thomas  
Bill Tomlinson  
Telford & Wrekin Councillors' Pride Fund  
M Uppal  
The Virgin Money Foundation  
Waitrose Ltd (Newport)  
White Stuff  
Wrekin College  
The Wrekin Housing Group

### Gifts in Kind:

Admaston Methodist Church: toys and knitted goods  
BT: 20 Samsung Galaxy Tab A7 Lite + Christmas toys for families  
Christmas Smile: Christmas Party gifts  
Church of Jesus Christ & Latter Day Saints: chocolates & biscuits for families  
Sharon Dalton: Christmas gifts for families + craft items  
Elysia Davison: 3 x £5 Sainsbury's vouchers  
Ironbridge & Severn Gorge Lions: Christmas food hampers  
Linus Project: Baby quilts  
Little Stars: Christmas gifts  
Morrisons, Wellington: Easter eggs and various grocery items  
White Stuff: various merchandise for families & volunteers

## **Contact us**

### **Home-Start Telford & Wrekin**

Room 23  
40 Tan Bank  
Wellington  
Telford  
TF1 1HW

Telephone: 01952 872280

E-mail: [info@homestarttandw.org.uk](mailto:info@homestarttandw.org.uk)

Website: [www.homestarttelfordandwrekin.co.uk](http://www.homestarttelfordandwrekin.co.uk)

Facebook: Home-Start Telford and Wrekin

Twitter: [homestarttw](https://twitter.com/homestarttw)

## **Other useful contact details:**

### **Chief Executive, Home-Start UK**

4th Floor, Arnhem House, 31 Waterloo Way, Leicester, LE1 6LP

T: 0116 464 5490

E: [info@home-start.org.uk](mailto:info@home-start.org.uk)

### **Charity Commission**

T: 0300 066 9197

W: <https://www.gov.uk/government/organisations/charity-commission>

### **Companies House**

T: 0303 123 4500

E: [enquiries@companieshouse.gov.uk](mailto:enquiries@companieshouse.gov.uk)

### **Home-Start Telford & Wrekin**

Registered Charity Number: 1148269

Company Limited by Guarantee Number: 7004506

Home-Start Telford & Wrekin  
Room 23  
40 Tan Bank  
Wellington  
Telford  
TF1 1HW  
info@homestarttandw.org.uk  
www.homestarttelfordandwrekin.co.uk  
01952 872280



## Annual Accounts

For the year ended 31<sup>st</sup> March 2023

Lisa Oosthuizen

A handwritten signature in black ink, appearing to read "Lisa Oosthuizen".

Director

Approved by the Board on: 26<sup>th</sup> September 2023





## Treasurer's Report

For the year ended 31<sup>st</sup> March 2023

The Accounts have been prepared in accordance with Accounting and Reporting by Charities: Statement of Recommended Practice applicable to charities preparing their accounts in accordance with the Financial Reporting Standard in the UK and Republic of Ireland (Charities SORP FRS 102) (effective 1<sup>st</sup> January 2015), and with the Companies Act 2006.

The organisation's funds are incorporated into one current and two deposit accounts.

A portion of income is for 'specific purposes' and/or subject to Service Level Agreements (SLAs) and/or has restrictions on its use.

### Financial position at the year end:

Total reserves of the charity have reduced by 17% since last year from £114,483 to £94,818. Free cash reserves, which the charity is able to spend on any of its aims, have reduced by 48% from £51,004 to £26,768. Despite this reduction in reserves, the Trustees believe Home-Start Telford & Wrekin is in a stable financial position: The free cash reserves are sufficient to cover 4 months of unfunded salaries and core costs with no further funding, and the 2023-24 budget anticipates that income will exceed expenditure without the use of its reserves.

### Principal sources of funds including fundraising:

The principal funds of Home-Start Telford & Wrekin during the 2022-23 year came from:

- Children in Need – Teenage Parents project
- National Lottery – Parents Matter project
- National Lottery – Awards 4 All
- National Lottery – IT grant
- NHS – Smoking Cessation project

Grants and donations of £1,000 or more were also received from:

- Baron Davenport's Charity
- Barratt Homes
- The Lady Forester Trust
- The Ironmongers' Company
- John Lewis Partnership/Waitrose
- Lloyds Bank Foundation
- The Millichope Foundation
- Stirchley & Brookside Parish Council
- Telford & Wrekin Councillor's Pride
- White Stuff/Home-Start UK
- The Wrekin Housing Group Ltd

Fundraising income totalled £6,447, from activities including:

- Sponsored gym event with Nuffield
- Quiz night
- Christmas gift wrapping
- Participation in the Ironbridge Half Marathon

We are hugely appreciative of all the funding we receive from our supporters, regardless of the amount. Please see the Annual Report 2022-23 for a full list of supporters.

### Investment policy & objectives:

Home-Start Telford & Wrekin receives interest payable to the one current and two deposit accounts. The charity does not hold any other investments. A long-term objective is to raise funds to set up an investment fund from which the charity could receive an amount of income.

### Designated funds/Reserves

The Trustees took the decision in 2007/08 to put £42,700 aside for contingency purposes. Following annual re-calculation of potential costs this amount has been set at £66,928. The

purpose of this money is to cover redundancy and pension costs.

**Principal risks:**

The year was a very positive one and our current financial position is good, however, the organisation has historically depended on a small number of funders and their ongoing support has been short term in nature and is constantly under review. The National Lottery 5-year grant has helped to stabilise this although there remains the need to raise funds for both the current and future financial years. For this reason, the organisation remains at short term risk.

The Trustees receive financial information relating to actual spend versus budget, on a bi-monthly basis, along with an overview of total funds. Reserves and budgets are reviewed annually. The scheme has a strategic plan and there are sub-groups consisting of management members who meet to address on-going needs.

Continued effective operation of the organisation over the whole of Telford & Wrekin Borough will require long term guaranteed funding.

**Looking to the future**

The second year of the strategic review, funded by the Lloyds Foundation and HSUK, has been completed. A fundraising strategy was developed with the aim of improving funding diversification. Employment of a Fundraising/Public Relations Lead has already paid dividends, with funds being received from more diverse and growing funding streams. High profile partnerships secured by HSUK continue to raise awareness, profile, and funds.

We remain, as ever, immensely grateful to all our partners for their invaluable financial support.

**Lisa Oosthuizen**

Treasurer, Trustee

# HOME-START TELFORD & WREKIN

## STATEMENT OF FINANCIAL ACTIVITIES FOR THE YEAR ENDED 31 MARCH 2023

	2023 Unrestricted Funds £	2023 Restricted Funds £	2023 Total £	2022 Total £
<b>INCOME:</b>				
Donations and legacies (notes 2.1 & 7.1)	23,165	86,446	109,611	131,610
Investment Income	1,125		1,125	42
<b>Total Income</b>	<b>24,290</b>	<b>86,446</b>	<b>110,736</b>	<b>131,652</b>
<b>EXPENDITURE:</b>				
Raising Funds (note 3.1)	(1,287)	-	(1,287)	(7)
Charitable activities (note 3.2 & 7.1)	(39,156)	(89,958)	(129,114)	(119,826)
<b>Total expenditure</b>	<b>(40,443)</b>	<b>(89,958)</b>	<b>(130,401)</b>	<b>(119,833)</b>
<b>Net income/(expenditure)</b>	<b>(16,153)</b>	<b>(3,512)</b>	<b>(19,665)</b>	<b>11,819</b>
<b>Transfer of funds</b>	<b>-</b>	<b>-</b>	<b>-</b>	<b>-</b>
<b>Total funds brought forward</b>	<b>106,572</b>	<b>7,911</b>	<b>114,483</b>	<b>102,664</b>
<b>Total funds carried forward</b>	<b>90,419</b>	<b>4,399</b>	<b>94,818</b>	<b>114,483</b>

The statement of financial activities includes all gains and losses recognised in the year.  
All income and expenditure derives from continuing activities.

**HOME-START TELFORD & WREKIN**  
**BALANCE SHEET AS AT 31 MARCH 2023**

**Non-current Assets**

Equipment (note 4)

**Current Assets**

Debtors (note 5)

Cash at bank and in hand

**Total current assets**

**Current Liabilities**

Creditors (note 6)

**Net assets**

**Funds of the charity**

Restricted funds (note 7.1)

Unrestricted funds (note 7.2)

**Total funds**

2023 £	2022 £
2,276	3,215
487	402
138,034	183,099
138,521	183,501
(45,979)	(72,233)
94,818	114,483
4,399	7,911
90,419	106,572
94,818	114,483



# HOME-START TELFORD WREKIN

## NOTES TO THE ACCOUNTS FOR THE YEAR ENDED 31 MARCH 2023

### Note 1 Accounting Policies

#### 1.1 Basis of preparation

These accounts have been prepared in accordance with Accounting and Reporting by Charities: Statement of Recommended Practice applicable to charities preparing their accounts in accordance with the Financial Reporting Standard in the UK and Republic of Ireland (Charities SORP FRS 102 ) (effective 1 January 2015), and with the Companies Act 2006.

#### 1.2 Preparation of the accounts on a going concern basis

The charity has secured funding for at least the next 12 months. The trustees consider the charity to be a going concern.

#### 1.3 Income

Grant income is recognised when the charity has entitlement to the funds, any performance conditions attached to the grants have been met, it is probable that the income will be received and the amount can be measured reliably.

Donations are included in the year in which they are receivable, which is when the charity becomes entitled to the resource.

#### 1.4 Interest receivable

Interest on funds is included when receivable and the amount can be measured reliably by the charity. This is normally upon notification of the interest paid by the bank.

#### 1.5 Fund accounting

Unrestricted funds are available to spend on activities that further any of the purposes of the charity. Designated funds are unrestricted funds that the trustees have decided at their discretion to set aside for a specific purpose. Restricted funds are solely used for particular areas of the charity's work specified by the donor.

#### 1.6 Funds received as an agent

Funds received by the charity acting as an agent are not recognised as an asset in the accounts because the funds are not within its control. Consequently, the receipt of funds as agent is not recognised as income nor is its distribution recognised as expenditure in the statement of financial activities.

#### 1.7 Expenditure

Expenditure is recognised once there is a legal or constructive obligation to make a payment to a third party, it is probable that settlement will be required and the amount of the obligation can be measured reliably.

#### 1.8 Tangible fixed assets

Costs are capitalised if the asset can be used for more than one year. Tangible fixed assets are initially measured at cost and subsequently measured at cost, net of depreciation and any impairment losses.

Depreciation is recognised to write off the cost of assets less their residual values over their useful lives on the following basis:

Equipment	25% straight line
-----------	-------------------

#### 1.9 Debtors

Prepayments are valued at the amount prepaid

#### 1.10 Cash at bank and in hand

Cash at bank and in hand includes cash and short term highly liquid investment.



# HOME-START TELFORD WREKIN

## NOTES TO THE ACCOUNTS FOR THE YEAR ENDED 31 MARCH 2023

### 1.11 Creditors

Other creditors are recognised where the charity has a present obligation resulting from a past event that will probably result in the transfer of funds to a third party and the amount due to settle the obligation can be measured reliably.

### 1.12 Pensions

Home-Start contributes 5% of employees' salaries into pension schemes of staff.

## Note 2 Income

### 2.1 Analysis of donations and legacies from unrestricted funds

	This year £	Last year £
Grants & Trust Income	13,241	39,485
Donations	2,902	12,265
Fundraising	6,447	2,480
Family Events	575	-
	<u>23,165</u>	<u>54,230</u>

## Note 3 Expenditure

### 3.1 Analysis of expenditure on raising funds

	This year £	Last year £
Fundraising costs	<u>1,287</u>	<u>7</u>

### 3.2 Analysis of expenditure on charitable activities

	This year £	Last year £
Staff costs	100,289	92,000
Staff travel expenses	991	764
Staff away days	120	-
Accounting	4,456	4,722
Volunteers' travel expenses	1,927	1,095
Volunteers' events & gifts	266	269
Courses/training	116	558
Printing, postage & stationery	320	575
Telephone & Internet	877	683
Creche	5,656	2,263
Rent and room hire	4,276	4,348
Insurance/data protection	1,514	1,494
Home-Start UK	2,370	2,790
Equipment expensed	258	1,537
Licences, repairs and servicing	1,164	1,059
Depreciation	1,830	1,607
Family Events	694	279
Materials	282	757
Refreshments	471	187
DBS Checks	351	601
Advertising	-	495
Miscellaneous	886	1,743
	<u>129,114</u>	<u>119,826</u>

# HOME-START TELFORD WREKIN

## NOTES TO THE ACCOUNTS FOR THE YEAR ENDED 31 MARCH 2023

### 3.3 Trustees expenses

	This year	Last year
Number of trustees who were paid expenses	-	-
Total amount paid for travel expenses	£0	£0

### 3.4 Staff costs

	This year	Last year
	£	£
Gross salaries	94,619	86,918
Employer's national insurance costs	1,586	1,443
Pension costs	4,084	3,639
	<u>100,289</u>	<u>92,000</u>

### 3.5 Average number of employees in the year

	This year	Last year
Charitable activities	6	6

### 3.6 Independent examiner

Payments made for the independent examination of the accounts totalled £200.

## Note 4 Tangible Fixed Assets

### 4.1 Analysis of Tangible Fixed Assets

	Equipment £
<u>Cost</u>	
Balance at 1 April 2022	9,429
Additions	891
Disposals	
Balance at 31 March 2023	<u>10,320</u>
<u>Depreciation</u>	
Balance at 1 April 2022	6,214
Disposals	
Charge for the year	1,830
Balance at 31 March 2023	<u>8,044</u>
<u>Net Book Value</u>	
Balance at 1 April 2022	3,215
Balance at 31 March 2023	<u>2,276</u>

## Note 5 Debtors and Prepayments

### 5.1 Analysis of Debtors

	Amounts falling due within 1 year	
	This year	Last year
	£	£
Prepayments	<u>487</u>	<u>402</u>

# HOME-START TELFORD WREKIN

## NOTES TO THE ACCOUNTS FOR THE YEAR ENDED 31 MARCH 2023

### Note 6 Creditors and accruals

#### 6.1 Analysis of creditors

	Amounts falling due within 1 year	
	This year	Last year
	£	£
Accruals	3,505	2,166
Short-term compensated absences (holiday pay)	1,150	2,965
PAYE/NI Liability	1,385	1,288
Deferred income	39,939	65,814
	<u>45,979</u>	<u>72,233</u>

Deferred income relates to funding from the NHS, National Lottery, Children In Need and Lawley and Overdale Parish Council received in advance of the period to which it relates.

### Note 7 Funds

#### Note 7.1 Restricted income funds

	Balance at 04/01/2022	Income	Expenditure	Transfer from/(to) unrestricted funds	Balance at 31/03/2023
Albert Hunt Trust	-	3,000	(3,000)	-	-
Baron Davenport's Charity	-	759	(759)	-	-
Building Better Opportunities	(781)	781	-	-	-
Children in Need - Teenage Parents	2,052	10,500	(13,062)	-	(510)
Councillor's Pride	-	5,221	(4,721)	-	500
Home-Start UK/White Stuff	-	2,440	(2,440)	-	-
Ironmonger's Company	-	2,500	(2,500)	-	-
John Lewis	-	400	-	-	400
Madeleys Chartered Surveyors	-	200	(200)	-	-
National Lottery	3,454	35,993	(40,435)	-	(989)
National Lottery - Awards 4 All	-	10,000	(10,000)	-	-
National Lottery - IT	2,986	-	(1,493)	-	1,493
NHS - Smoking Cessation	-	8,625	(7,621)	-	1,004
Home-Start UK/Pears - Recovery & Resilience	200	1,327	(1,527)	-	-
Stirchley & Brookside Parish Council	-	1,200	(1,200)	-	-
Veolia Envirogrant	-	1,000	(1,000)	-	-
Wrekin Housing Group Ltd	-	2,500	-	-	2,500
	<u>7,911</u>	<u>86,446</u>	<u>(89,958)</u>	<u>-</u>	<u>4,399</u>

Building Better Opportunities: This project, which has now ended, focused on improving employability of volunteers by providing the opportunity to complete a six month placement to gain experience and skills in either family support or administrative skills.

Children in Need - Teenage Project: To deliver well-being support to children and young people experiencing teenage parenthood in Telford & Wrekin. Activities aim to improve confidence, reduce isolation and improve relationships.

Councillor's Pride Grants: Grants received supported the provision of a 'Triage' style service, providing telephone/online support to families awaiting the placement of a home-visiting volunteer, and supporting the recruitment and training of new family support volunteers.

## **HOME-START TELFORD WREKIN**

### **NOTES TO THE ACCOUNTS FOR THE YEAR ENDED 31 MARCH 2023**

The National Lottery: This grant will enable work with more children and families impacted by issues including isolation, mental or physical health problems, and domestic abuse. As well as increasing the number of families worked with through core home-visiting work, the grant will also fund three 'Me Time' groups, spread geographically across the Borough. These groups will enable mothers experiencing low mood/mental health issues to meet and talk to others in similar circumstances and enjoy time to themselves while their children are cared for in a creche. The groups will include exercises to improve mental health and self-esteem as well as talks by relevant professionals.

National Lottery - IT: To upgrade our IT capability during the first lockdown to enable us to move to virtual platforms in order to continue to support families effectively and communicate as a staff team.

NHS Smoking Cessation: To provide support to mothers who have quit smoking during pregnancy, to remain smoke free after the birth of their child.

Pears - Recovery & Resilience: To fund staff hours associated with the implementation of a CRM system, fundraising and social media work.

Wrekin Housing Group Ltd: Grant towards a fund to purchase a CRM system to improve sustainability by delivering improved administrative processing of all family referrals and volunteers.

#### **Note 7.2 Designated Funds**

£66,928 of the unrestricted funds are designated funds which have been set aside for potential redundancy costs.

#### **Note 8 Other information**

Home-Start Telford & Wrekin is a private company limited by guarantee and incorporated in England. Its registered office is:

Room 23, 40 Tan Bank, Wellington, Telford, TF1 1HW





Section A

Independent Examiner's Report

Report to the trustees

Home-Start Telford & Wrekin

On accounts for the year  
ended

31 March 2023

Charity no  
(if any)

1148269

Set out on pages

I report to the trustees on my examination of the accounts of the above charity ("the Trust") for the year ended 31 March 2023.

Responsibilities and  
basis of report

As the charity's trustees, you are responsible for the preparation of the accounts in accordance with the requirements of the Charities Act 2011 ("the Act").

I report in respect of my examination of the Trust's accounts carried out under section 145 of the 2011 Act and in carrying out my examination, I have followed all the applicable Directions given by the Charity Commission under section 145(5)(b) of the Act.

Independent  
examiner's statement

I have completed my examination. I confirm that no material matters have come to my attention in connection with the examination which gives me cause to believe that in, any material respect:

- the accounting records were not kept in accordance with section 130 of the Charities Act; or
- the accounts did not accord with the accounting records; or
- the accounts did not comply with the applicable requirements concerning the form and content of accounts set out in the Charities (Accounts and Reports) Regulations 2008 other than any requirement that the accounts give a 'true and fair' view which is not a matter considered as part of an independent examination.

I have no concerns and have come across no other matters in connection with the examination to which attention should be drawn in this report in order to enable a proper understanding of the accounts to be reached.

Signed:

*Hilary Payne*

Date:

30/08/2023

Name:

Hilary Payne

Relevant professional  
qualification(s) or body  
(if any):

AAT level 4

Address:

12 Mill Farm Drive, Randlay, Telford TF3 2NA



**Section B**

**Disclosure**

Only complete if the examiner needs to highlight material matters of concern (see CC32, Independent examination of charity accounts: directions and guidance for examiners).

**Give here brief details of any items that the examiner wishes to disclose.**

Home-Start Telford & Wrekin  
Room 23  
40 Tan Bank  
Wellington  
Telford  
TF1 1HW  
info@homestarttandw.org.uk  
www.homestarttelfordandwrekin.co.uk  
01952 872280



## Annual Accounts

For the year ended 31<sup>st</sup> March 2023

Lisa Oosthuizen

A handwritten signature in black ink, appearing to read "Lisa Oosthuizen".

Director

Approved by the Board on: 26<sup>th</sup> September 2023



## Treasurer's Report

For the year ended 31<sup>st</sup> March 2023

The Accounts have been prepared in accordance with Accounting and Reporting by Charities: Statement of Recommended Practice applicable to charities preparing their accounts in accordance with the Financial Reporting Standard in the UK and Republic of Ireland (Charities SORP FRS 102) (effective 1<sup>st</sup> January 2015), and with the Companies Act 2006.

The organisation's funds are incorporated into one current and two deposit accounts.

A portion of income is for 'specific purposes' and/or subject to Service Level Agreements (SLAs) and/or has restrictions on its use.

### Financial position at the year end:

Total reserves of the charity have reduced by 17% since last year from £114,483 to £94,818. Free cash reserves, which the charity is able to spend on any of its aims, have reduced by 48% from £51,004 to £26,768. Despite this reduction in reserves, the Trustees believe Home-Start Telford & Wrekin is in a stable financial position: The free cash reserves are sufficient to cover 4 months of unfunded salaries and core costs with no further funding, and the 2023-24 budget anticipates that income will exceed expenditure without the use of its reserves.

### Principal sources of funds including fundraising:

The principal funds of Home-Start Telford & Wrekin during the 2022-23 year came from:

- Children in Need – Teenage Parents project
- National Lottery – Parents Matter project
- National Lottery – Awards 4 All
- National Lottery – IT grant
- NHS – Smoking Cessation project

Grants and donations of £1,000 or more were also received from:

- Baron Davenport's Charity
- Barratt Homes
- The Lady Forester Trust
- The Ironmongers' Company
- John Lewis Partnership/Waitrose
- Lloyds Bank Foundation
- The Millichope Foundation
- Stirchley & Brookside Parish Council
- Telford & Wrekin Councillor's Pride
- White Stuff/Home-Start UK
- The Wrekin Housing Group Ltd

Fundraising income totalled £6,447, from activities including:

- Sponsored gym event with Nuffield
- Quiz night
- Christmas gift wrapping
- Participation in the Ironbridge Half Marathon

We are hugely appreciative of all the funding we receive from our supporters, regardless of the amount. Please see the Annual Report 2022-23 for a full list of supporters.

### Investment policy & objectives:

Home-Start Telford & Wrekin receives interest payable to the one current and two deposit accounts. The charity does not hold any other investments. A long-term objective is to raise funds to set up an investment fund from which the charity could receive an amount of income.

### Designated funds/Reserves

The Trustees took the decision in 2007/08 to put £42,700 aside for contingency purposes. Following annual re-calculation of potential costs this amount has been set at £66,928. The

purpose of this money is to cover redundancy and pension costs.

**Principal risks:**

The year was a very positive one and our current financial position is good, however, the organisation has historically depended on a small number of funders and their ongoing support has been short term in nature and is constantly under review. The National Lottery 5-year grant has helped to stabilise this although there remains the need to raise funds for both the current and future financial years. For this reason, the organisation remains at short term risk.

The Trustees receive financial information relating to actual spend versus budget, on a bi-monthly basis, along with an overview of total funds. Reserves and budgets are reviewed annually. The scheme has a strategic plan and there are sub-groups consisting of management members who meet to address on-going needs.

Continued effective operation of the organisation over the whole of Telford & Wrekin Borough will require long term guaranteed funding.

**Looking to the future**

The second year of the strategic review, funded by the Lloyds Foundation and HSUK, has been completed. A fundraising strategy was developed with the aim of improving funding diversification. Employment of a Fundraising/Public Relations Lead has already paid dividends, with funds being received from more diverse and growing funding streams. High profile partnerships secured by HSUK continue to raise awareness, profile, and funds.

We remain, as ever, immensely grateful to all our partners for their invaluable financial support.

**Lisa Oosthuizen**

Treasurer, Trustee

# HOME-START TELFORD & WREKIN

## STATEMENT OF FINANCIAL ACTIVITIES FOR THE YEAR ENDED 31 MARCH 2023

	2023 Unrestricted Funds £	2023 Restricted Funds £	2023 Total £	2022 Total £
<b>INCOME:</b>				
Donations and legacies (notes 2.1 & 7.1)	23,165	86,446	109,611	131,610
Investment Income	1,125		1,125	42
<b>Total Income</b>	<b>24,290</b>	<b>86,446</b>	<b>110,736</b>	<b>131,652</b>
<b>EXPENDITURE:</b>				
Raising Funds (note 3.1)	(1,287)	-	(1,287)	(7)
Charitable activities (note 3.2 & 7.1)	(39,156)	(89,958)	(129,114)	(119,826)
<b>Total expenditure</b>	<b>(40,443)</b>	<b>(89,958)</b>	<b>(130,401)</b>	<b>(119,833)</b>
<b>Net income/(expenditure)</b>	<b>(16,153)</b>	<b>(3,512)</b>	<b>(19,665)</b>	<b>11,819</b>
<b>Transfer of funds</b>	<b>-</b>	<b>-</b>	<b>-</b>	<b>-</b>
<b>Total funds brought forward</b>	<b>106,572</b>	<b>7,911</b>	<b>114,483</b>	<b>102,664</b>
<b>Total funds carried forward</b>	<b>90,419</b>	<b>4,399</b>	<b>94,818</b>	<b>114,483</b>

The statement of financial activities includes all gains and losses recognised in the year.  
All income and expenditure derives from continuing activities.



**HOME-START TELFORD & WREKIN**  
**BALANCE SHEET AS AT 31 MARCH 2023**

**Non-current Assets**

Equipment (note 4)

**Current Assets**

Debtors (note 5)

Cash at bank and in hand

**Total current assets**

**Current Liabilities**

Creditors (note 6)

**Net assets**

**Funds of the charity**

Restricted funds (note 7.1)

Unrestricted funds (note 7.2)

**Total funds**

2023 £	2022 £
2,276	3,215
487	402
138,034	183,099
138,521	183,501
(45,979)	(72,233)
94,818	114,483
4,399	7,911
90,419	106,572
94,818	114,483

# HOME-START TELFORD WREKIN

## NOTES TO THE ACCOUNTS FOR THE YEAR ENDED 31 MARCH 2023

### Note 1 Accounting Policies

#### 1.1 Basis of preparation

These accounts have been prepared in accordance with Accounting and Reporting by Charities: Statement of Recommended Practice applicable to charities preparing their accounts in accordance with the Financial Reporting Standard in the UK and Republic of Ireland (Charities SORP FRS 102 ) (effective 1 January 2015), and with the Companies Act 2006.

#### 1.2 Preparation of the accounts on a going concern basis

The charity has secured funding for at least the next 12 months. The trustees consider the charity to be a going concern.

#### 1.3 Income

Grant income is recognised when the charity has entitlement to the funds, any performance conditions attached to the grants have been met, it is probable that the income will be received and the amount can be measured reliably.

Donations are included in the year in which they are receivable, which is when the charity becomes entitled to the resource.

#### 1.4 Interest receivable

Interest on funds is included when receivable and the amount can be measured reliably by the charity. This is normally upon notification of the interest paid by the bank.

#### 1.5 Fund accounting

Unrestricted funds are available to spend on activities that further any of the purposes of the charity. Designated funds are unrestricted funds that the trustees have decided at their discretion to set aside for a specific purpose. Restricted funds are solely used for particular areas of the charity's work specified by the donor.

#### 1.6 Funds received as an agent

Funds received by the charity acting as an agent are not recognised as an asset in the accounts because the funds are not within its control. Consequently, the receipt of funds as agent is not recognised as income nor is its distribution recognised as expenditure in the statement of financial activities.

#### 1.7 Expenditure

Expenditure is recognised once there is a legal or constructive obligation to make a payment to a third party, it is probable that settlement will be required and the amount of the obligation can be measured reliably.

#### 1.8 Tangible fixed assets

Costs are capitalised if the asset can be used for more than one year. Tangible fixed assets are initially measured at cost and subsequently measured at cost, net of depreciation and any impairment losses.

Depreciation is recognised to write off the cost of assets less their residual values over their useful lives on the following basis:

Equipment	25% straight line
-----------	-------------------

#### 1.9 Debtors

Prepayments are valued at the amount prepaid

#### 1.10 Cash at bank and in hand

Cash at bank and in hand includes cash and short term highly liquid investment.

# HOME-START TELFORD WREKIN

## NOTES TO THE ACCOUNTS FOR THE YEAR ENDED 31 MARCH 2023

### 1.11 Creditors

Other creditors are recognised where the charity has a present obligation resulting from a past event that will probably result in the transfer of funds to a third party and the amount due to settle the obligation can be measured reliably.

### 1.12 Pensions

Home-Start contributes 5% of employees' salaries into pension schemes of staff.

## Note 2 Income

### 2.1 Analysis of donations and legacies from unrestricted funds

	This year £	Last year £
Grants & Trust Income	13,241	39,485
Donations	2,902	12,265
Fundraising	6,447	2,480
Family Events	575	-
	<u>23,165</u>	<u>54,230</u>

## Note 3 Expenditure

### 3.1 Analysis of expenditure on raising funds

	This year £	Last year £
Fundraising costs	<u>1,287</u>	<u>7</u>

### 3.2 Analysis of expenditure on charitable activities

	This year £	Last year £
Staff costs	100,289	92,000
Staff travel expenses	991	764
Staff away days	120	-
Accounting	4,456	4,722
Volunteers' travel expenses	1,927	1,095
Volunteers' events & gifts	266	269
Courses/training	116	558
Printing, postage & stationery	320	575
Telephone & Internet	877	683
Creche	5,656	2,263
Rent and room hire	4,276	4,348
Insurance/data protection	1,514	1,494
Home-Start UK	2,370	2,790
Equipment expensed	258	1,537
Licences, repairs and servicing	1,164	1,059
Depreciation	1,830	1,607
Family Events	694	279
Materials	282	757
Refreshments	471	187
DBS Checks	351	601
Advertising	-	495
Miscellaneous	886	1,743
	<u>129,114</u>	<u>119,826</u>

# HOME-START TELFORD WREKIN

## NOTES TO THE ACCOUNTS FOR THE YEAR ENDED 31 MARCH 2023

### 3.3 Trustees expenses

	This year	Last year
Number of trustees who were paid expenses	-	-
Total amount paid for travel expenses	£0	£0

### 3.4 Staff costs

	This year	Last year
	£	£
Gross salaries	94,619	86,918
Employer's national insurance costs	1,586	1,443
Pension costs	4,084	3,639
	<u>100,289</u>	<u>92,000</u>

### 3.5 Average number of employees in the year

	This year	Last year
Charitable activities	6	6

### 3.6 Independent examiner

Payments made for the independent examination of the accounts totalled £200.

## Note 4 Tangible Fixed Assets

### 4.1 Analysis of Tangible Fixed Assets

	Equipment £
<u>Cost</u>	
Balance at 1 April 2022	9,429
Additions	891
Disposals	
Balance at 31 March 2023	<u>10,320</u>
<u>Depreciation</u>	
Balance at 1 April 2022	6,214
Disposals	
Charge for the year	1,830
Balance at 31 March 2023	<u>8,044</u>
<u>Net Book Value</u>	
Balance at 1 April 2022	3,215
Balance at 31 March 2023	<u>2,276</u>

## Note 5 Debtors and Prepayments

### 5.1 Analysis of Debtors

	Amounts falling due within 1 year	
	This year	Last year
	£	£
Prepayments	<u>487</u>	<u>402</u>

# HOME-START TELFORD WREKIN

## NOTES TO THE ACCOUNTS FOR THE YEAR ENDED 31 MARCH 2023

### Note 6 Creditors and accruals

#### 6.1 Analysis of creditors

	Amounts falling due within 1 year	
	This year	Last year
	£	£
Accruals	3,505	2,166
Short-term compensated absences (holiday pay)	1,150	2,965
PAYE/NI Liability	1,385	1,288
Deferred income	39,939	65,814
	<u>45,979</u>	<u>72,233</u>

Deferred income relates to funding from the NHS, National Lottery, Children In Need and Lawley and Overdale Parish Council received in advance of the period to which it relates.

### Note 7 Funds

#### Note 7.1 Restricted income funds

	Balance at 04/01/2022	Income	Expenditure	Transfer from/(to) unrestricted funds	Balance at 31/03/2023
Albert Hunt Trust	-	3,000	(3,000)	-	-
Baron Davenport's Charity	-	759	(759)	-	-
Building Better Opportunities	(781)	781	-	-	-
Children in Need - Teenage Parents	2,052	10,500	(13,062)	-	(510)
Councillor's Pride	-	5,221	(4,721)	-	500
Home-Start UK/White Stuff	-	2,440	(2,440)	-	-
Ironmonger's Company	-	2,500	(2,500)	-	-
John Lewis	-	400	-	-	400
Madeleys Chartered Surveyors	-	200	(200)	-	-
National Lottery	3,454	35,993	(40,435)	-	(989)
National Lottery - Awards 4 All	-	10,000	(10,000)	-	-
National Lottery - IT	2,986	-	(1,493)	-	1,493
NHS - Smoking Cessation	-	8,625	(7,621)	-	1,004
Home-Start UK/Pears - Recovery & Resilience	200	1,327	(1,527)	-	-
Stirchley & Brookside Parish Council	-	1,200	(1,200)	-	-
Veolia Envirogrant	-	1,000	(1,000)	-	-
Wrekin Housing Group Ltd	-	2,500	-	-	2,500
	<u>7,911</u>	<u>86,446</u>	<u>(89,958)</u>	<u>-</u>	<u>4,399</u>

Building Better Opportunities: This project, which has now ended, focused on improving employability of volunteers by providing the opportunity to complete a six month placement to gain experience and skills in either family support or administrative skills.

Children in Need - Teenage Project: To deliver well-being support to children and young people experiencing teenage parenthood in Telford & Wrekin. Activities aim to improve confidence, reduce isolation and improve relationships.

Councillor's Pride Grants: Grants received supported the provision of a 'Triage' style service, providing telephone/online support to families awaiting the placement of a home-visiting volunteer, and supporting the recruitment and training of new family support volunteers.



## **HOME-START TELFORD WREKIN**

### **NOTES TO THE ACCOUNTS FOR THE YEAR ENDED 31 MARCH 2023**

The National Lottery: This grant will enable work with more children and families impacted by issues including isolation, mental or physical health problems, and domestic abuse. As well as increasing the number of families worked with through core home-visiting work, the grant will also fund three 'Me Time' groups, spread geographically across the Borough. These groups will enable mothers experiencing low mood/mental health issues to meet and talk to others in similar circumstances and enjoy time to themselves while their children are cared for in a creche. The groups will include exercises to improve mental health and self-esteem as well as talks by relevant professionals.

National Lottery - IT: To upgrade our IT capability during the first lockdown to enable us to move to virtual platforms in order to continue to support families effectively and communicate as a staff team.

NHS Smoking Cessation: To provide support to mothers who have quit smoking during pregnancy, to remain smoke free after the birth of their child.

Pears - Recovery & Resilience: To fund staff hours associated with the implementation of a CRM system, fundraising and social media work.

Wrekin Housing Group Ltd: Grant towards a fund to purchase a CRM system to improve sustainability by delivering improved administrative processing of all family referrals and volunteers.

#### **Note 7.2 Designated Funds**

£66,928 of the unrestricted funds are designated funds which have been set aside for potential redundancy costs.

#### **Note 8 Other information**

Home-Start Telford & Wrekin is a private company limited by guarantee and incorporated in England. Its registered office is:

Room 23, 40 Tan Bank, Wellington, Telford, TF1 1HW



Section A

Independent Examiner's Report

Report to the trustees

Home-Start Telford & Wrekin

On accounts for the year  
ended

31 March 2023

Charity no  
(if any)

1148269

Set out on pages

I report to the trustees on my examination of the accounts of the above charity ("the Trust") for the year ended 31 March 2023.

Responsibilities and  
basis of report

As the charity's trustees, you are responsible for the preparation of the accounts in accordance with the requirements of the Charities Act 2011 ("the Act").

I report in respect of my examination of the Trust's accounts carried out under section 145 of the 2011 Act and in carrying out my examination, I have followed all the applicable Directions given by the Charity Commission under section 145(5)(b) of the Act.

Independent  
examiner's statement

I have completed my examination. I confirm that no material matters have come to my attention in connection with the examination which gives me cause to believe that in, any material respect:

- the accounting records were not kept in accordance with section 130 of the Charities Act; or
- the accounts did not accord with the accounting records; or
- the accounts did not comply with the applicable requirements concerning the form and content of accounts set out in the Charities (Accounts and Reports) Regulations 2008 other than any requirement that the accounts give a 'true and fair' view which is not a matter considered as part of an independent examination.

I have no concerns and have come across no other matters in connection with the examination to which attention should be drawn in this report in order to enable a proper understanding of the accounts to be reached.

Signed:

*Hilary Payne*

Date:

30/08/2023

Name:

Hilary Payne

Relevant professional  
qualification(s) or body  
(if any):

AAT level 4

Address:

12 Mill Farm Drive, Randlay, Telford TF3 2NA



**Section B**

**Disclosure**

Only complete if the examiner needs to highlight material matters of concern (see CC32, Independent examination of charity accounts: directions and guidance for examiners).

Give here brief details of any items that the examiner wishes to disclose.