

# **Rotherham Parents Forum Limited**

**Financial statements for the year  
ended 31st July 2023**



**Charity number: 1147969**

**Company number: 7719951**



The Spectrum, Coke Hill, Rotherham, S60 2HX  
Tel: 01709 829821 Fax: 01709 829822  
Email: [admin@varotherham.org.uk](mailto:admin@varotherham.org.uk) Web: [www.varotherham.org.uk](http://www.varotherham.org.uk)

**Rotherham Parents Forum Limited**  
**Contents**

	<b>Page</b>
Legal & Administrative Information	3
Trustees (Directors) Annual Report	4 - 13
Independent Examiners Report	14
Statement of Financial Activities	15
Balance Sheet	16
Statement of Cashflows	17
Notes to the Financial Statement	18 - 28

**Rotherham Parents Forum Limited**  
**Administrative details**

**Charity number** 1147969

**Registered company number** 7719951  
**company limited by guarantee**

**Directors (Trustees)** Amanda Moreman  
Claire Whiting  
Yvonne Moreman - resigned 17.05.23  
Catherine Bridge - resigned 17.05.23  
Caroline Bradley - resigned 17.05.23  
Stephen Mulligan  
Catherine Ratcliffe  
Richard Butcher  
Kieran McManus

**Company Secretary** Louise Graham

**Senior Staff members** Jayne Fitzgerald - Strategic Manager  
Louise Graham - Operations Manager & Company Secretary

**Registered office** 131 Green Lane  
Rawmarsh  
Rotherham  
S62 7JY

**Bankers** HSBC  
35 College Street  
Rotherham  
S65 1AF

**Independent examiner** Faye Hazlehurst  
Community Accountant  
Voluntary Action Rotherham  
The Spectrum  
Coke Hill  
Rotherham  
S60 2HX

**Rotherham Parents Forum Limited**  
**Trustees' report (incorporating the Directors' annual report)**  
**for the year ended 31 July 2023**

The trustees, who are also directors of the charity for the purposes of the Companies Act, submit their annual report and financial statements for the year ended 31st July 2023.

**Exemptions**

The trustees have taken advantage of the exemptions available to small companies, including the audit exemption (see statement on balance sheet).

**Structure, governance and management**

Rotherham Parents Forum Ltd (Company number 7719951) was incorporated on 27/7/2011 and its Memorandum and Articles of Association govern it. Its legal status is that of a company limited by guarantee and a registered Charity (Charity number 1147969).

A team of twenty-five employed staff (equivalent to 12.6 full-time staff) carries out day-to-day project activity, and 37 volunteers provide invaluable support in many areas. Volunteer processes have been reviewed this year, increasing the support they provide, hence the increase in volunteer expenses compared to last year. Volunteers have contributed approximately 3700 hours to the charity, and we are immensely grateful for their help and support.

Governance arrangements were reviewed and strengthened during the year, including trustees taking on specific roles and responsibilities according to their skills and experience. The charity's policies and procedures were regularly reviewed and updated to ensure compliance with legal and regulatory requirements.

**Appointment of Directors and membership**

Three years after incorporation, a third of the directors must retire annually but can apply for re-election. Company members vote on the board of directors. The directors to retire by rotation shall be those who have been in office the longest since their last appointment.

**Objectives and activities**

As trustees of Rotherham Parents Forum Limited, we present our Annual Report from August 2022 to July 2023. This report outlines our activities, achievements, and financial performance during the year.

- Rotherham Parent Carers Forum (RPCF) - supports parents and carers of children with disabilities and additional needs in Rotherham.
- Rotherham Adult Neurodiversity Support Service (RANSS) - supports Autistic adults and those diagnosed with ADHD in Rotherham.

Our mission is to empower and support parent carers, young people with special needs, and neurodiverse adults in Rotherham. We foster a community that champions inclusion and understanding and raise public awareness to ensure that individuals are recognised, heard, and supported in overcoming any inequalities they might face.

**Rotherham Parents Forum Ltd**  
**Trustees' report (incorporating the Directors' annual report) continued**  
**for the year ended 31 July 2023**

**Objectives and activities continued**

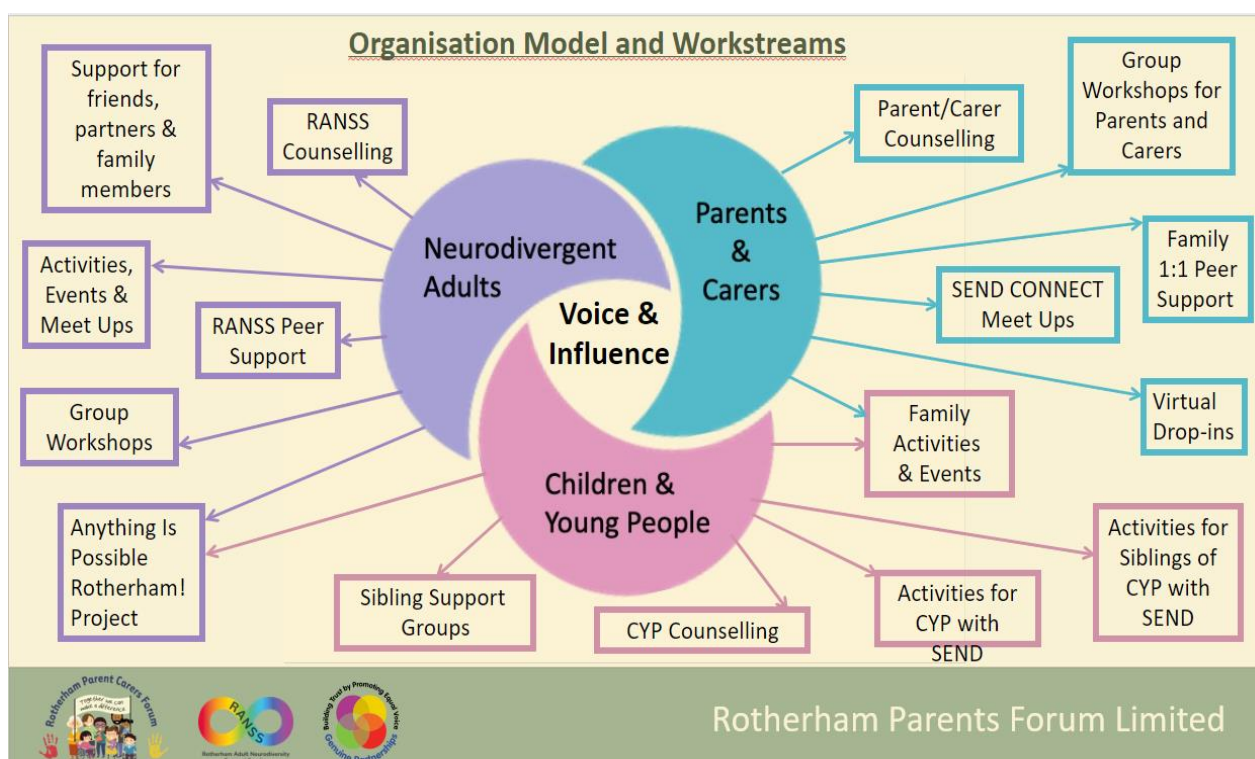
Ensuring our work delivers our aims

We review our aims, objectives, and activities each year. This review looks at what we achieved, the outcomes of our work during the previous 12 months, the success of each critical activity, and the benefits they have brought to those groups of people we are set up to support. The review also helps us to ensure our aims, objectives and activities remain focused on our stated purposes. We have referred to the Charity Commission's general guidance on public benefit when reviewing our aims and objectives and planning our future activities. In particular, the trustees consider how planned activities contribute to their aims and objectives.

Our main activities

During the year, we actively engaged with our stakeholders through various initiatives, which included encouraging parent carers to sign up to become members of RPCF to keep up to date on our voice and influence work and collaborating with the local authority, schools, and health services to improve outcomes for children with SEND and neurodivergent adults.

An overview of specific activities and initiatives that were offered is as follows:



**Rotherham Parents Forum Ltd**  
**Trustees' report (incorporating the Directors' annual report) continued**  
**for the year ended 31 July 2023**

**Achievements and performance**

Our main activities and achievements throughout the year are described below. All our charitable activities are undertaken to further our charitable purposes for the public benefit.

Who used and benefited from our services?

Our objectives and funding limit our services to those living in Rotherham. South Yorkshire ICB Rotherham Place must be the individual's responsible commissioner for some services. We currently work with families who have children and young people with Special Educational Needs and Disabilities, as well as neurodiverse adults aged 18+. Therefore, according to current data, the estimated number of people eligible to access our services is as follows.

- 8044 children and young people and their families (The Rotherham school census data from January 2021-identifies that there are 45,189 children and young people attending Rotherham's schools and 17.8% are identified as having Special Educational Need).
- 2035 neurodiverse adults and their networks of support (Rotherham's All Age Autism Strategy - Projecting Adults Needs and Service Information (PANSI) data for 18–64-year-olds and Projecting Older People Population Information (POPPI) data for people aged sixty-five and over, have produced a profile with predicted numbers of autistic people up to 2035)

The primary areas of charitable activity are peer support for both families and neurodiverse adults, provision of counselling services, an activity programme for children and young people with SEND and their families, sibling support services, advice and information and our voice and influence work with local services. We also work with the Local Authority as equal partners through a separate Community Interest Company, Genuine Partnerships, modelling and supporting co-production and inclusive practice both locally and nationally. The activities and achievements that flow from these services are described below.

Supporting Parent Carers

Over the last year, the charity has worked with many parent carers, and from talking to families, it is known that membership to the forum and engaging in the activities provided has a positive impact on the emotional well-being of parents, as they are accessing peer support and spending time with other families who share similar experiences. Parents are also more empowered and better informed to play an active part in their child's health and education. Our current membership data shows that members are distributed all over the borough; more data is as follows :

- RPCF has 2004 registered members
- 623 new members signed up during the year, a 63% increase from last year 2021-22

General information, advice and guidance

We have an office base from where we operate all our services which is open from Monday to Friday 9:00am to 5:00pm.

**Rotherham Parents Forum Ltd**  
**Trustees' report (incorporating the Directors' annual report) continued**  
**for the year ended 31 July 2023**

**Achievements and performance continued**

We also have active Facebook pages where information and valuable articles are posted. Anyone can follow the main Facebook page and be updated on forum news, and parents and practitioners can use this facility. The forum also has a closed discussion group solely for our members' use. This group comprises parents and carers and enables the forum to conduct consultations and gather opinions. It is also a safe space where parents can ask for mutual advice and support. We also send out regular e-newsletters, a highly effective way of sharing helpful information and news and encouraging parent participation and engagement.

Peer support - Family service

Commissioned by South Yorkshire ICB Rotherham Place, the Family Peer Support team aims to provide peer support to parents and carers of Children and Young People who are accessing or about to access mental health services. This support will enable them to cope better with the challenges resulting from interaction with the various services and any emotional well-being or mental health issues.

Family Activities

Commissioned by Rotherham Metropolitan Borough Council as part of the Short Breaks Offer, we have a programme of activities that take place weekly, fortnightly, and monthly, and families are welcome to access as few or as many as they feel necessary. One-off events are run throughout the year to coincide with school holidays. Sessions include trampolining, soft play, adapted cinema screenings, and day trips. We also work with another local charitable organisation, Rotherham United Community Sports Trust, and hold a weekly youth club for children and young people with SEND at New York Stadium, which has been incredibly successful, and we very much value the partnership we have developed. We work with providers to ensure that environments are adapted to suit the needs of members' families.

The activities also offer sibling and parent support. The family is welcome to attend, and team members are always on hand.

To support access to leisure provision, the forum is also an official distributor of the Max Card, which allows families of children with SEND to access discounted days out across the country. The card costs £3 for the forum to purchase and is valid for two years. This cost is passed onto families, but nothing further is charged. For many families, this has been an introduction to the forum and has helped to increase membership.

Sibling Support Services

Sibling Support Groups create opportunities for siblings of children with SEND to meet other young people in similar situations, share their thoughts, feelings, opinions, and insights, and have lots of fun on the journey.

**Rotherham Parents Forum Ltd**  
**Trustees' report (incorporating the Directors' annual report) continued**  
**for the year ended 31 July 2023**

Counselling Services

The forum has always offered counselling services to parents and carers of children and young people with SEND. Over the last year, neurodiverse adults accessing RANSS have also completed additional training to deliver a service for children and young people.

Counselling sessions offer a safe and non-judgmental environment to allow people to express and explore their thoughts and feelings in ways they may not feel able to do with friends and family. Counsellors do not give advice or make decisions for people; they will support people in developing their insights and solutions to difficulties. Counselling enables people to feel less isolated, find inner strength, and better understand themselves.

All the team members have a specific understanding of Special Educational Needs and Disabilities. They understand that people are individuals with varied needs. They are sensitive to such matters and make adjustments where possible.

The benefit of the service being within our charity is that as the counselling relationship ends, people are signposted to other areas of our activity to continue to access different areas of support for them and their families.

SEND Connect

Thanks to grants from the Shared Prosperity Fund and RMBC Unpaid Carers grants, we delivered several positive activities for parent carers to help individuals struggling with the cost-of-living crisis and provide wellbeing packs.

Summary of support to parent carers

- SEND Connect volunteers supported 123 unique parents and carers at 74 face-to-face evening and daytime meet-ups, with a total attendance of 418.
- 133 free parent carer counselling sessions were facilitated, supporting 22 unique individuals.
- 524 families applied for Max Cards through RPCF, which gave them discounts for family
- 167 unique families were actively supported through Family Peer Support sessions.
- A further 55 unique individuals accessed the more comprehensive offer through virtual drop-ins and the Male Parent Carer Group.
- 361 1:1 Peer Support Sessions were delivered
- 27 Group training workshops were delivered in Managing Anxiety, Advocating for your Child, Emotional Regulation, Sensory Differences and Communication.
- There were 118 attendances at group workshops



**Rotherham Parents Forum Ltd**  
**Trustees' report (incorporating the Directors' annual report) continued**  
**for the year ended 31 July 2023**

Summary of support to children and young people

- 346 unique Children/Young People with SEND accessed RPCF Activities
- 85 unique siblings of Children/Young People with SEND accessed RPCF Activities
- 48 unique Children/Young People with SEND or their siblings accessed RPCF free Counselling Sessions
- A total of 279 Free Counselling Sessions for children and young people were delivered.
- We had 1724 attendances at RPCF activities from children/young people with send and 198 attendances from siblings across 138 delivered sessions.
- 48 unique siblings of Children/Young People with SEND participated in special Sibling Support Sessions, with 172 total attendees.

Support to neurodivergent adults

This service aims to facilitate opportunities for individuals to access a community of support, workshops, leisure activities, etc., reduce isolation, build confidence, and inform services through lived experience.

The service has a team of peer support workers with lived experience. In addition to providing information, advice, and guidance, they help people open up about what they are feeling and experiencing following a diagnosis. Their role is also to:

- introduce people to ideas and approaches that others have found helpful
- reassure people that they are not alone in how they are feeling
- help people to connect with others and give them a sense of belonging
- encourage people to value their strengths
- build people's self-esteem and confidence
- help people to feel more hopeful about the future

Over the past year, thanks to grants from the RMBC Devolved Ward fund, we have been able to develop an allotment project for our organisation, particularly the Rotherham Adult Neurodiversity Support Service. The aim of this project is to grow fruit and vegetables, encourage nature recovery, and create a safe and relaxing space for Rotherham's neurodiverse community.

Summary of support to Neurodivergent Adults

- 469 unique adults accessed support from RANSS during the year.
- RANSS delivered 1227 support sessions, including counselling, 1:1 peer support and group workshops.
- 187 RANSS Activities and Events were held with 132 unique adult attendees and 849 attendances.

**Rotherham Parents Forum Ltd**  
**Trustees' report (incorporating the Directors' annual report) continued**  
**for the year ended 31 July 2023**

Voice and Influence Work

At the core of our charity is our voice and influence work. To bring about change and make a real difference in Rotherham, there is a need to facilitate opportunities for people to share their voices and experiences. Through the activities described above, people get the 'head space' to identify the things that work well for them and the blocks they encounter. Through these activities, the team engages with people daily, working appreciatively, listening to what is working well within Rotherham and asking where the gaps are and what would improve things. Common priorities can be identified, and this feedback is passed onto the charity's voice and influence team to ascertain common priorities resulting from lived experience. They then facilitate timed consultations and targeted focus groups to gather more expansive views, attend numerous meetings, and share this in partnership at a strategic level with decision-makers and policymakers to influence service delivery and development. Some pieces of work over the past year have included :

- CAMHS Pathways Consultation and Listening Event – Sept 2022
- Written Statement of Action – Education and Health Care Plans Consultation and
- Written statement of Action – Local Offer Consultation and Listening Event – Jan 2023
- RPCF Membership Survey to ascertain family priorities across Rotherham

The charity is determined to get the best possible outcome for the people it works with. Through years of experience, it has learnt that working with and alongside services and practitioners is the best way to achieve its aims.

The charity actively encourages individuals and their families to participate and work in partnership with providers for better outcomes, directly, with support or via consultation on common issues and priorities.

The charity is based in and around Rotherham, but it also works regionally through the Yorkshire and Humber Network and nationally via the National Network of Parent Carer Forums (NNPCF).

Genuine Partnerships

The charity is also an equal partner with the Local Authority (via the Educational Psychology Service) in promoting the Rotherham Charter, now known as the Four Cornerstones of Co-production and Inclusive Practice, through a separate Community Interest Company, Genuine Partnerships. We work with schools, settings, and services across our local area, supporting and facilitating projects and training with partners in places across the Yorkshire and Humber region and nationally, as well as in partnership with national charity Contact.

**Rotherham Parents Forum Ltd**  
**Trustees' report (incorporating the Directors' annual report) continued**  
**for the year ended 31 July 2023**

Our approach is based upon the Four Cornerstones of Co-production and Inclusive Practice:



The Cornerstones grew out of the experiences of Rotherham children and young people with special educational needs and disabilities (SEND) and their parent carers. The Genuine Partnerships team promotes the Cornerstones Approach as a tried and tested way of embedding partnership working and inclusive practice within the culture and ethos of any organisation, and at an area level. The team has co-created and co-delivers a range of tools, materials, projects and training packages to support co-production in Rotherham, the region and across the country (see the website [www.genuinepartnerships.co.uk](http://www.genuinepartnerships.co.uk)).

This relational way of working is set out in the Children and Families Act 2014 and the SEND Code of Practice and should be the foundation of any graduated response. By strengthening relationships and empowering voice, it boosts everybody's emotional health and wellbeing.

Genuine Partnerships has been commissioned by RMBC to facilitate the young people with SEND Voice and Influence group, Guiding Voices and to promote embedding the Cornerstones within strategy (e.g., SEND, Accessibility, Preparation for Adulthood) and practice within every school and service.

#### Summary of voice and influence work

- Over the year, 290 opportunities for parent carer participation were facilitated, including virtual drop-ins, face-to-face meet-ups, Listening Events, Family Activities, and SEND events.
- The total number of parent/carers attendances at these participation events was 1911
- 32 different people attended 323 strategic meetings and workstreams, presenting the voices of the people we work with.
- In a recent membership survey, 82% of parent-carer respondents were confident that RPCF accurately represents their views.

**Rotherham Parents Forum Ltd**  
**Trustees' report (incorporating the Directors' annual report) continued**  
**for the year ended 31 July 2023**

*Examples of positive outcomes from this work are as follows:*

- ND Pathway – Helios contract was reviewed and recommissioned for a full assessment.
- Monthly meetings were established with Camhs service and Neurodevelopment pathway leads, providing an opportunity for a living experience to shape current service and practice.
- SEN Sufficiency - Phase 4 project – increasing provision in the borough.
- Partnership meeting with TRFT clarified Autism support on admission to hospital (RDASH team support LD and Autism – TRFT team support LD or Autism )
- 0-19 first 1001 days- In partnership included SEND, not included in plan originally.
- Home school Transport – Improved communication – one parent email and telephone number – on local offer and shared via our networks.
- Sendco network – a slot at every event/meeting to share the current family experience with school Sendcos
- Regular formal meetings with the Director for Education, Head of SEND, and CYPs cabinet members to update on current SEND priorities from families.
- Regular formal meetings with a Designated clinical officer to update on health priorities from families.

In Rotherham, twenty-three schools and settings have been supported to strengthen and embed co-production and inclusive practice within their culture and ethos by embedding the Genuine Partnerships working method. Further examples of positive practice include :

- Further, Rotherham Schools awarded Charter Gold and celebrated inclusive practice at the Charter Gold event, including reaccreditation after 4 and 8 years., building on the excellent partnership and inclusive practice implemented.
- Rotherham's response to the SEND green paper framed by the Cornerstones at the collaborative event.

4 Cornerstones of coproduction is the scaffolding for Rotherham's refreshed SEND strategy

4 Cornerstones framed the coproduced Y&H minimum standards for Preparation for Adulthood  
4 Cornerstones approach applied in more services, including seldom heard communities.  
Genuine Partnerships delivered coproduction training to various services, including CAMHS, Inclusion services, and the EHCP team.

A formal funding agreement between Genuine Partnerships and RMBC ensuring joint priority of partnership with families.

### **Plans for Future Periods**

The charity plans to continue the activities outlined above in the forthcoming years subject to satisfactory funding arrangements and will continue to provide support and advice to parents and carers of children with disabilities and additional needs in Rotherham, as well as Autistic adults and those with ADHD. The charity has recently revisited its strategic plan for the next three years through engagement with its stakeholders and has established the following key priorities :

- Sustain and enhance current initiatives
- Improve communication with our stakeholders
- Prioritise equality, diversity, and inclusion
- Invest in our staff and volunteers by creating a "People Strategy."
- Improve the efficiency of our systems and processes
- Diversify income streams
- Move to more extensive premises

**Rotherham Parents Forum Ltd**  
**Trustees' report (incorporating the Directors' annual report) continued**  
**for the year ended 31 July 2023**

**Financial review and reserves policy**

The charity trustees have examined the charity's requirements for reserves considering the main risks to the organisation. It has established a policy whereby the unrestricted funds held by the charity should be between 3 and 6 months of the expenditure. Currently, as much of the charity's income is from grants and contracts and must be spent by a particular time, the organisation does not hold this level of reserves.

There is awareness of the importance of building the required level and this will be a priority over the coming period and there will be time invested into the fundraising strategy to try to diversify income.

As at 31 July 2023 the company had no free reserves, the amount of unrestricted reserves was £3,549 in deficit, this does not take into account the money tied up in fixed assets. (2022: £5,089). At this point in time the charitable company is utilising restricted funds for general expenditure. The trustees are aware of the need to build the reserves levels as a matter of priority. The reserves policy requires 3 months running costs which based on the current year of expenditure is approximately £134,588.

**Directors' responsibilities for the financial statements**

Company law requires the directors to prepare financial statements for each financial year, which give a true and fair view of the state of affairs of the company at the end of the year and of the surplus or deficiency for the year then ended.

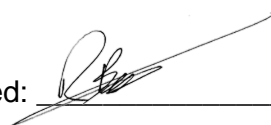
In preparing those financial statements, the trustees are required to: select suitable accounting policies and then apply them on a consistent basis, making judgements and estimates that are prudent and reasonable. The Trustees must also prepare the financial statements on the going concern basis unless it is inappropriate to presume that the charity will continue in business.

The directors are responsible for keeping proper accounting records which disclose, with reasonable accuracy at any time, the financial position of the company, and enable them to ensure that the financial statements comply with the Companies Act 2006. The directors are also responsible for safeguarding the assets of the company and hence for taking reasonable steps for the prevention and detection of fraud or other irregularities.

**Small company provisions:**

This report has been prepared in accordance with the special provisions for small companies under Part 15 of the Companies Act 2006.

The directors declare that they have approved the directors' annual report and signed on their behalf:

Signed:  \_\_\_\_\_

Print name: Richard Butcher  
Director

Date: 10th April 2024

**Independent examiners report to the trustees of  
Rotherham Parents Forum Limited  
for the year ended 31 July 2023**

I report to the charity trustees on my examination of the accounts of the Company for the year ended 31 July 2023.

**Responsibilities and basis of report**

As the charity's trustees of the Company (and also its directors for the purposes of company law) you are responsible for the preparation of the accounts in accordance with the requirements of the Companies Act 2006 ('the 2006 Act').

Having satisfied myself that the accounts of the Company are not required to be audited under Part 16 of the 2006 Act and are eligible for independent examination, I report in respect of my examination of your charity's accounts as carried out under section 145 of 145 of the Charities Act 2011 Act ('the 2011 Act'). In carrying out my examination I have followed the Directions given by the Charity Commission under section 145(5)(b) of the 2011 Act.

**Independent examiner's statement**

Since the Company's gross income exceeded £250,000 your examiner must be a member of a body listed in section 145 of the 2011 Act. I confirm that I am qualified to undertake the examination because I am a member of the Association of Accounting Technician, which is one of the listed bodies.

I have completed my examination. I confirm that no matters have come to my attention in connection with the examination giving me cause to believe:

1. accounting records were not kept in respect of the Company as required by section 386 of the 2006 Act; or
2. the accounts do not accord with those records; or
3. the accounts do not comply with the accounting requirements of section 396 of the 2006 Act other than any requirement that the accounts give a 'true and fair view which is not a matter considered as part of an independent examination; or
4. the accounts have not been prepared in accordance with the methods and principles of the Statement of Recommended Practice for accounting and reporting by charities (FRS 102).

I have no concerns and have come across no other matters in connection with the examination to which attention should be drawn in this report in order to enable a proper understanding of the accounts to be reached.

Signed:



11 April 2024

F Hazlehurst FMAAT  
Community Accountant  
Voluntary Action Rotherham Ltd  
The Spectrum  
Coke Hill  
Rotherham  
S60 2HX

**Rotherham Parents Forum Limited**  
**Statement of Financial Activities**  
**for the year ended 31 July 2023**

	Notes	Unrestricted Funds £	Restricted Funds £	2023 Total £	2022 Total £
<b>Income</b>					
Donations & legacies		4,178	-	4,178	3,445
Charitable activities	2	50,844	457,993	508,837	560,817
<b>Total income</b>		<b>55,022</b>	<b>457,993</b>	<b>513,015</b>	<b>564,262</b>
<b>Expenditure</b>					
Cost of raising funds	3	4480	210	4,690	3,983
Expenditure on charitable activities	4	59,737	473,925	533,662	403,148
<b>Total expenditure</b>		<b>64,217</b>	<b>474,135</b>	<b>538,352</b>	<b>407,131</b>
<b>Net income/(expenditure)</b>		<b>(9,196)</b>	<b>(16,142)</b>	<b>(25,338)</b>	<b>157,130</b>
<b>Transfer between funds</b>		826	(826)	-	-
<b>Net movement in funds</b>		<b>(8,370)</b>	<b>(16,968)</b>	<b>(25,338)</b>	<b>157,130</b>
<b>Total funds brought forward</b>		8,910	198,144	207,054	49,924
<b>Total funds carried forward</b>		<b>540</b>	<b>181,176</b>	<b>181,716</b>	<b>207,054</b>

The Statement of Financial Activities complies with the requirements for an income and expenditure account under the Companies Act 2006 and includes all gains and losses recognised in the year.

All the activities of the charitable company are classed as continuing.

**Rotherham Parents Forum Limited**  
**Balance Sheet**  
**as at 31 July 2023**

		<b>2023</b>	<b>2022</b>
<b>Fixed Assets</b>	<b>Notes</b>	<b>£</b>	<b>£</b>
Tangible assets	<b>6</b>	6,344	7,262
<b>Current Assets</b>			
Debtors	<b>7</b>	219,110	47,981
Cash at Bank and in hand		29,348	176,419
		<u>248,458</u>	<u>224,400</u>
<b>Creditors - amounts due within one year</b>	<b>8</b>	(73,086)	(24,608)
<b>Net current assets</b>		<u>175,372</u>	<u>199,792</u>
<b>Net assets</b>		<u><b>181,716</b></u>	<u><b>207,054</b></u>
<b>Represented by:</b>			
Unrestricted funds		(3,549)	4,734
Designated funds	<b>14</b>	4,089	4,176
Restricted funds	<b>15</b>	181,176	198,144
<b>Total funds</b>		<u><b>181,716</b></u>	<u><b>207,054</b></u>

The notes on the following pages form part of these financial statements.

For the period ended 31st July 2023 the company is entitled to the audit exemption under section 477 of the Companies Act 2006 relating to small companies.

The members have not required the company to obtain an audit in accordance with section 476 of the Companies Act 2006.

The directors acknowledge their responsibilities for complying with the requirements of the Act with respect to accounting records and for the preparation of accounts.

These accounts have been prepared in accordance with the provisions applicable to companies subject to small companies' regime.

The directors declare that they have approved the accounts above.

Signed on behalf of the company's directors:

Signed: 

Date: 10th April 2024

Print name: Richard Butcher

Director



**Rotherham Parents Forum Limited**  
**Statement of Cash flows**  
**as at 31 July 2023**

	Note	2023	2022
<b>Cashflow from operating activities</b>	<b>18</b>	<b>(145,874)</b>	147,106
		<u>(145,874)</u>	<u>147,106</u>
<b>Net cashflow from operating activities</b>		<b>(145,874)</b>	147,106
<b>Cashflow from investing activities</b>			
Payment to acquire tangible fixed asset		(1,197)	(3,386)
Interest received		-	-
		<u>(1,197)</u>	<u>(3,386)</u>
<b>Net cashflow from investing activities</b>		<b>(1,197)</b>	(3,386)
		<u>(1,197)</u>	<u>(3,386)</u>
<b>Net increase in cash and cash equivalents</b>		<b>(147,071)</b>	143,720
<b>Cash and cash equivalents at 1 August 2022</b>		<b>176,419</b>	32,699
		<u>176,419</u>	<u>32,699</u>
<b>Cash and cash equivalents at 31 July 2023</b>		<b>29,348</b>	176,419
		<u>29,348</u>	<u>176,419</u>
<b>Cash and cash equivalents consists of:</b>			
Cash at bank and in hand		29,348	176,419
		<u>29,348</u>	<u>176,419</u>
<b>Cash and cash equivalents at 31 July 2023</b>		<b>29,348</b>	176,419
		<u>29,348</u>	<u>176,419</u>

**Rotherham Parents Forum Limited**  
**Notes to the financial statements**  
**for the year ended 31 July 2023**

**1 Accounting policies**

**a) Basis of preparation of the accounts**

These financial statements have been prepared in accordance with Accounting and Reporting by Charities - Statement of Recommended Practice applicable to charities preparing their accounts in accordance with the Financial Reporting Standard applicable in the UK and Republic of Ireland (FRS102) (effective 1 January 2019) - Charities SORP (FRS102)) and the Companies Act 2006. Assets and liabilities are initially recognised at historical cost or transaction value, unless otherwise stated in the relevant accounting policy note(s).

The charity meets the definition of a public benefit entity as defined by FRS102.

**b) Going Concern**

The financial statements have been prepared on a going concern basis. The trustees have considered the level of funds held and the expected level of income and expenditure for the 12 months following the authorising of these financial statements and consider the going concern basis appropriate. The trustees are aware of the need to build reserves urgently.

**c) Incoming resources**

All material incoming resources have been included in the Statement of Financial Activities when the charity is entitled to the income, when any performance conditions attached are met, when it is probable that the income will be received and when the amount can be measured reliably.

Income from government and other grants, whether 'capital' grants or 'revenue' grants, is recognised when the charity has entitlement to the funds, any performance conditions attached to the grants have been met, it is probable that the income will be received and the amount can be measured reliably and is not deferred.

Grant income is deferred if the period the monies relate to is specified or indicated by the funder.

Donations and legacies are accounted for when they are receivable.

**d) Resources Expended**

All expenditure is accounted for on an accruals basis and has been classified under headings that aggregate all costs related to the category. Expenditure is recognised where there is a legal or constructive obligation to make payments to third parties, it is probable that the settlement will be required and the amount of the obligation can be measure reliably.

Cost of raising funds includes all expenditure incurred to raise funds for charitable purposes including costs of all fundraising activities and costs incurred in seeking donations, grants and legacies.

**Rotherham Parents Forum Limited**  
**Notes to the financial statements continued**  
**for the year ended 31 July 2023**

**e) Tangible Fixed Assets**

Tangible fixed assets are stated at cost less depreciation. Depreciation is calculated to write down the cost or valuation, less estimated residual value, of all tangible fixed assets over (£500) their expected useful lives on the following basis:

Fixtures & fittings	25% reducing balance
Equipment	25% reducing balance

**f) Cash at bank and in hand**

Cash at bank and in hand includes cash and short-term highly liquid investments with a short maturity of three months or less from the date of acquisition or opening of the deposit or similar account.

**g) Leases**

Rentals payable under operating leases are charged to the SoFA on a straight line basis over the period of the lease.

**h) Trade debtors**

Trade debtors are amounts due from customers for consultancy fees in the ordinary course of business.

**i) Trade creditors**

Trade creditors are obligations to pay for goods or services that have been acquired in the ordinary course of business from suppliers.

**j) Fund accounting**

The charity maintains a general unrestricted fund which represents funds which are expendable at the discretion of the trustees in furtherance of the objects of the charity.

Designated funds are unrestricted funds of the charity which the trustees have decided at their discretion to set aside to use for a specific purpose. Where a fixed asset has been purchased with restricted funds and the funding has or is coming to an end the value is transferred to the designated fixed asset fund and depreciation is charged accordingly.

Restricted funds have been provided to the charity for a particular purpose and may only be spent for the purpose for which they were given. Any balance remaining on a restricted fund at the end of the year is carried forward as a balance on the fund, unless permission has been given by the funder to remove the restriction on the balance outstanding.

**k) Pension costs and other post-retirement benefits**

The charity operates a defined contribution pension scheme. Contributions payable to the charity's pension scheme are charged to the Statement of Financial Activities in the period to which they relate.

**Rotherham Parents Forum Limited**  
**Notes to the financial statements continued**  
**for the year ended 31 July 2023**

**Analysis of Income**

<b>2 Charitable activities</b>	<b>Unrestricted Funds</b>	<b>Restricted Funds</b>	<b>Total 2023</b>	<b>Unrestricted Funds</b>	<b>Restricted Funds</b>	<b>Total 2022</b>
	<b>£</b>	<b>£</b>	<b>£</b>	<b>£</b>	<b>£</b>	<b>£</b>
<b>Grants &amp; contracts</b>						
South Yorkshire ICB - Family peer support	-	89,079	<b>89,079</b>	-	92,423	92,423
RMBC Voice and Influence	-	30,000	<b>30,000</b>	-	30,000	30,000
RMBC Short Breaks	-	20,833	<b>20,833</b>	-	25,000	25,000
RMBC - Contain outbreak management fund	-	-	-	-	48,000	48,000
RMBC Co-production project	-	-	-	4,980	-	4,980
DfE Grant 2021-22	-	-	-	-	8,750	8,750
DfE Grant 2022-23	-	8,750	<b>8,750</b>	-	8,750	8,750
DfE Grant 2023-24	-	8,750	<b>8,750</b>	-	-	8,750
DfE Yorkshire and Humber	-	7,249	<b>7,249</b>	-	-	8,750
South Yorkshire ICB - Adult Post Diagnostic	-	185,120	<b>185,120</b>	-	172,141	172,141
Rotherham CCG - Winter Pressure funding	-	71,366	<b>71,366</b>	-	93,333	93,333
VAR - Community renewal fund	-	1,873	<b>1,873</b>	-	30,905	30,905
VAR - Smiles for Miles	-	13,984	<b>13,984</b>	-	7,500	7,500
VAR - Shared Prosperity fund	-	5,000	<b>5,000</b>	-	-	7,500
RotherFed - Better mental health	-	-	-	-	19,500	19,500
RMBC - Devolved Ward fund		15,989	<b>15,989</b>	-	-	19,500
<b>Other charitable income:</b>						
Max card sales	2,253	-	<b>2,253</b>	1,068	-	1,068
Consultancy	25,099	-	<b>25,099</b>	2,000	-	2,000
Activity income	8,807	-	<b>8,807</b>	4,650	-	4,650
Misc charitable income	319		<b>319</b>	275	-	275
General fundraising	10,316		<b>10,316</b>	10,391	-	10,391
Counselling income	4,050		<b>4,050</b>	1,150	-	1,150
	<b>50,844</b>	<b>457,993</b>	<b>508,837</b>	<b>24,515</b>	<b>536,302</b>	<b>560,817</b>

**Rotherham Parents Forum Limited**  
**Notes to the financial statements continued**  
**for the year ended 31 July 2023**

**Analysis of expenditure**

<b>3 Cost of raising funds</b>	<b>Unrestricted</b>	<b>Restricted</b>	<b>Total</b>	<b>Unrestricted</b>	<b>Restricted</b>	<b>Total</b>
	<b>Funds</b>	<b>Funds</b>	<b>2023</b>	<b>Funds</b>	<b>Funds</b>	<b>2022</b>
Max cards	1,787	13	<b>1,800</b>	1,500	-	1,500
Advertising	259	197	<b>456</b>	37	752	789
Paypal fees/charges	646	-	<b>646</b>	-	-	-
Salary costs	1,788	-	<b>1,788</b>	1,694	-	1,694
	<b>4,480</b>	<b>210</b>	<b>4,690</b>	<b>3,231</b>	<b>752</b>	<b>3,983</b>

<b>4 Charitable activities</b>	<b>Unrestricted</b>	<b>Restricted</b>	<b>Total</b>	<b>Unrestricted</b>	<b>Restricted</b>	<b>Total</b>
	<b>Funds</b>	<b>Funds</b>	<b>2023</b>	<b>Funds</b>	<b>Funds</b>	<b>2022</b>
	<b>£</b>	<b>£</b>	<b>£</b>	<b>£</b>	<b>£</b>	<b>£</b>
Consultancy	19	2,524	<b>2,543</b>	348	2,412	2,760
Travel Expenses	62	717	<b>779</b>	57	162	219
Room Hire and Refreshments	647	3,360	<b>4,007</b>	1,125	2,542	3,667
Activity Expenses	16,311	6,545	<b>22,856</b>	11,811	2,420	14,231
Rent and Rates	437	8,558	<b>8,995</b>	-	7,409	7,409
Insurance	112	1,676	<b>1,788</b>	-	-	-
Bank charges	106	-	<b>106</b>	68	-	68
PayPal charges	-	-	<b>-</b>	502	-	502
Payroll charges	74	2,495	<b>2,569</b>	-	1,620	1,620
Website	27	7,579	<b>7,606</b>	75	2,430	2,505
Equipment	(37)	3,833	<b>3,796</b>	138	4,960	5,098
General office expenses	384	3,278	<b>3,662</b>	740	2,216	2,956
Printing, postage and stationery	153	4,459	<b>4,612</b>	191	1,402	1,593
Membership & subscriptions	400	1,710	<b>2,110</b>	166	648	814
Telephone & internet	460	10,136	<b>10,596</b>	130	9,209	9,339
ICT maintenance	164	1,529	<b>1,693</b>	36	1,961	1,997
Light and Heat	94	4,206	<b>4,300</b>	-	2,400	2,400
Repairs and Maintenance	2,390	18,527	<b>20,917</b>	1,108	1,329	2,437
Staff Training	124	2,655	<b>2,779</b>	-	2,066	2,066
Access to work expenses	13,034	-	<b>13,034</b>	-	-	-
Wages & Salaries	<b>9</b> 19,517	381,892	<b>401,409</b>	926	329,527	330,453
Bad debts	1,238	-	<b>1,238</b>	-	-	-
Penalties and interest	242	-	<b>242</b>	-	-	-
Depreciation	1,181	934	<b>2,115</b>	1,574	847	2,421
Loss on disposal of assets	-	-	<b>-</b>	221	-	221
Professional fees	(1,554)	3,836	<b>2,282</b>	794	2,259	3,053
Volunteer Expenses	1,092	1,251	<b>2,342</b>	775	644	1,419
Sundry expenses	3,061	2,225	<b>5,286</b>	799	3,101	3,900
	<b>59,737</b>	<b>473,925</b>	<b>533,662</b>	<b>21,584</b>	<b>381,564</b>	<b>403,148</b>

**Rotherham Parents Forum Limited**  
**Notes to the financial statements continued**  
**for the year ended 31 July 2023**

<b>5 Net income/expenditure for the year</b>	<b>2023</b>	<b>2022</b>
	<b>£</b>	<b>£</b>

Net income/expenditure is stated after charging:

Independent Examination fee	<b>1,650</b>	1,650
Depreciation of tangible fixed assets	<b>2,115</b>	2,421
	<b><u>3,765</u></b>	<u>4,071</u>

**6 Tangible Fixed Assets**

**Fixture, fittings  
& equipment**  
**£**

**Cost**

at 1 August 2022	23,512
Additions	1,197
Disposals	-
at 31 July 2023	<b><u>24,709</u></b>

**Depreciation**

at 1 August 2022	16,250
Charge this period	2,115
Disposals	-
at 31 July 2023	<b><u>18,365</u></b>

**Net book value at 31 July 2023**

**6,344**

Net book value at 31 July 2022

7,262

	<b>2023</b>	<b>2022</b>
	<b>£</b>	<b>£</b>
<b>7 Debtors</b>		
Trade debtors	<b>197,534</b>	14,508
Prepayments	<b>2,098</b>	-
Accrued Income	<b>19,479</b>	33,473
	<b><u>219,110</u></b>	<u>47,981</u>

	<b>2023</b>	<b>2022</b>
	<b>£</b>	<b>£</b>
<b>8 Creditors - amounts due within one year</b>		
Trade creditors	<b>945</b>	3,710
HMRC Liabilities	<b>5,945</b>	16,381
Income received in advance	<b>62,973</b>	-
Accruals	<b>3,223</b>	4,517
	<b><u>73,086</u></b>	<u>24,608</u>

**Rotherham Parents Forum Limited**  
**Notes to the financial statements continued**  
**for the year ended 31 July 2023**

<b>9 Staff Costs and numbers</b>	<b>2023</b>	<b>2022</b>
	<b>£</b>	<b>£</b>
Salaries	377,646	310,747
Employer's national insurance	23,812	20,980
Employer's allowance	(5,000)	(5,163)
Employer's pension	6,739	5,583
	<u>403,197</u>	<u>332,147</u>

The average monthly number of employees during the year on full time equivalent (FTE) basis was as follows:

<b>2023</b>	<b>2022</b>
<u>17.57</u>	<u>16.16</u>

No employee received emoluments of more than £60,000.

The average number of employees during the year was 26 (2022 - 21)

**10 Trustees' remuneration, benefits and expenses**

During the year no trustee's (2022: none) received expenses, remuneration or benefits (2022: £nil).

**11 Fees paid to the Independent Examiners organisation**

	<b>2023</b>	<b>2022</b>
	<b>£</b>	<b>£</b>
Payroll	2,344	1,620
HR services	225	150
Accountancy support	250	-
QuickBooks license	270	240
	<u>3,089</u>	<u>2,010</u>

**12 Independent examination and accountancy services**

During the period, the cost of the independent examination and accountancy services was £1,650 (2022: £1,650).

**Rotherham Parents Forum Limited**  
**Notes to the financial statements continued**  
**for the year ended 31 July 2023**

**13 Related Party Transactions**

The charitable company received funding from Voluntary Action Rotherham (VAR) via the Smiles for Miles programme, Community Renewal fund and the Shared Prosperity fund amounting to £20,857 (2022: £38,405).

This is not considered to be a conflict of interest due to the reporting lines in place within VAR.

The charitable company receives free hire of the Social Prescribing hub through VAR this is offered to groups in the Voluntary and Community Sector offering a Social Prescribing Service.

C Whiting, A Moreman and C Ratcliffe are directors of the company, they are also directors of Genuine Partnerships. The charitable company received consultancy income of £5,600 during the period. (2022: £2,000).

Louise Graham and Jayne Fitzgerald, senior employees of the Charity are also a director of Genuine Partnerships CIC (a partnership between RPCF and RMBC).

The spouse of Richard Butcher (trustee) is employed by the charity.

A number of trustees and workers of the charitable company utilise the services offered by the charity.

**Movement in funds**

**14 Designated funds**

<b><u>2023</u></b>	<b>Brought forward</b>	<b>Incoming Resources</b>	<b>Resources Expended</b>	<b>Transfers</b>	<b>Carried forward</b>
	<b>£</b>	<b>£</b>	<b>£</b>	<b>£</b>	<b>£</b>
Fixed Asset fund	4,176	-	1,044	957	4,089
	<b>4,176</b>	<b>-</b>	<b>1,044</b>	<b>957</b>	<b>4,089</b>

**Transfer of funds**

The transfer of funds into the designated fixed asset fund represents the NBV of assets purchased with restricted funding that has now ended. The assets will be depreciated over the useful life.

<b><u>2022</u></b>	<b>Brought forward</b>	<b>Incoming Resources</b>	<b>Resources Expended</b>	<b>Transfers</b>	<b>Carried forward</b>
	<b>£</b>	<b>£</b>	<b>£</b>	<b>£</b>	<b>£</b>
Fixed Asset fund	5,789	-	1,613	-	4,176
	<b>5,789</b>	<b>-</b>	<b>1,613</b>	<b>-</b>	<b>4,176</b>



**Rotherham Parents Forum Limited**  
**Notes to the financial statements continued**  
**for the year ended 31 July 2023**

**Movement in funds continued**  
**15 Restricted funds**

<u>2023</u>	<b>Brought forward</b>	<b>Incoming Resources</b>	<b>Resources Expended</b>	<b>Transfers</b>	<b>Carried forward</b>
	£	£	£	£	£
DfE Grant 2022-23	4,830	8,750	13,151	(429)	-
DfE Grant 2023-24	-	8,750	5,962	-	2,788
DfE Yorkshire and Humber	-	7,249	1,873	-	5,376
RMBC Voice and Influence	9,107	30,000	43,885	-	(4,778)
RMBC short breaks	6,863	20,833	26,746	-	950
South Yorkshire ICB - Family Peer Support	49,006	89,079	75,236	-	62,849
CCG - Men's Mental Health	1,870	-	-	-	1,870
South Yorkshire ICB - Adult Post Diagnostic	21,490	185,120	201,777	-	4,833
VAR - Smiles for Miles	(3,584)	13,984	12,965	-	(2,565)
South Yorkshire ICS - TCP Extension funding	69,928	71,366	42,180	-	99,114
RMBC - Contain outbreak management fund	32,203	-	20,149	-	12,054
VAR - Community renewal fund	1,783	1,873	3,628	-	28
VAR - Shared Prosperity fund	-	5,000	3,627	-	1,373
RotherFed - Better Mental Health	4,648	-	4,086	-	562
RMBC - unpaid carers	-	-	234	-	(234)
RMBC - Devolved Ward fund	-	15,989	18,635	(397)	(3,043)
	<b>198,144</b>	<b>457,993</b>	<b>474,135</b>	<b>(826)</b>	<b>181,176</b>

Fund transfers

The transfers from the restricted funds into the designated fixed asset fund are to cover the NBV of the asset. This will be written down over the useful life of the asset.

<u>2022</u>	<b>Brought forward</b>	<b>Incoming Resources</b>	<b>Resources Expended</b>	<b>Transfers</b>	<b>Carried forward</b>
	£	£	£	£	£
DfE Grant 2020-21	619	-	(222)	(841)	-
DfE Grant 2021-22	4,252	8,750	15,356	2,354	-
DfE Grant 2022-23	0	8,750	3,920	-	4,830
RMBC Voice and Influence	2,595	30,000	23,488	-	9,107
RMBC short breaks	5,180	25,000	23,317	-	6,863
South Yorkshire ICB - Family Peer Support	15,713	92,423	59,130	-	49,006
CCG - Men's Mental Health	1,870	-	-	-	1,870
South Yorkshire ICB - Adult Post Diagnostic	(5,396)	172,141	145,255	-	21,490
VAR - Smiles for Miles	-	7,500	11,084	-	(3,584)
South Yorkshire ICS - TCP Extension funding	-	93,333	23,405	-	69,928
Rotherham CCG - Winter Pressure funding	16,069	-	17,812	1,743	-
RMBC - Contain outbreak management fund	-	48,000	15,797	-	32,203
VAR - Community renewal fund	-	30,905	29,122	-	1,783
RotherFed - Better mental health	-	19,500	14,852	-	4,648
	<b>40,902</b>	<b>536,302</b>	<b>382,316</b>	<b>3,256</b>	<b>198,144</b>

Fund transfers

The transfer between DfE grants is to cover the under and overpends during the years 2020-21 and 2021-22. A transfer has been made from general funds to cover the total overspend.

**Rotherham Parents Forum Limited**  
**Notes to the financial statements continued**  
**for the year ended 31 July 2023**

**15 Restricted funds**

**DFE Grant 2022-23 and 2023-24**

The grant is used to strengthen parent carer forums, so that parent carers can participate in the strategic planning and decision-making around services for children and young people with SEND in their area.

**South Yorkshire ICB (Rotherham Place) - Family Peer Support**

To provide peer support to parents and carers of Children and Young People who are accessing or about to access mental health services. This support will enable them to cope better with the challenges resulting from interaction with the various services and shared lived experience to offer advice and strategies on supporting any emotional wellbeing or mental health issues.

**South Yorkshire ICB (Rotherham Place) - Post Diagnostic Support to Adults**

To provide a new Post Diagnostic Support Service to be based and operating in Rotherham. The service will support adults (18 plus) and provide a liaison service to support patients who have been diagnosed with Autism or ADHD by the RDaSH Rotherham pathway.

**Rotherham Borough Council - Short breaks contract**

This grant has been awarded for the provision of short break activities for SEND young people and their families.

**Rotherham Borough Council - Voice and Influence contract**

This grant is to support us in providing a role in identifying and expressing the voice of parents and carers around special education needs and disability ensuring participation and engagement and providing information and support to parents and carers in Rotherham.

**Voluntary Action Rotherham – Community Renewal Fund**

This grant was awarded to allow us to contribute to the Anything's Possible Rotherham Project.

**Rotherham Borough Council – COMF**

This grant was awarded for RPCF to lead on the updating of the Local Offer workstream via the SEND Strategic Board setting out the support they expect to be available for local children and young people with special educational needs (SEN) or disabilities through lived experience and voice via a variety of forums in partnership with RMBC and wider partners.

**Voluntary Action Rotherham – Smiles for Miles**

This grant was awarded to allow us to contribute to the Smiles for Miles Project on behalf of Voluntary Action Rotherham Ltd.

**Rotherham Parents Forum Limited**  
**Notes to the financial statements continued**  
**for the year ended 31 July 2023**

**Restricted funds continued**

**Rotherfed - Prevention and Promotion Fund for Better Mental Health**

This grant was awarded to address loneliness to protect the mental health of vulnerable groups. Building on the good work started during the pandemic which saw the creation of Rotherham Heroes offering residents who accessed the council's Community Hub (RCH) physical and emotional help. Some of these Heroes went on to deliver befriending support. These local heroes supported people throughout the borough with emotional and practical support. Sitting alongside this was the Rotherham's Befriending Network, comprised of Voluntary and Community Sector organisations providing befriending support to people of all ages

**South Yorkshire ICS – TCP Extension Funding**

This funding was awarded to do more focused work in relation to the pre and post diagnostic support available for Autistic individuals in Rotherham in relation to both adults and CYP.

**DfE Yorkshire and Humber**

The Yorkshire and Humber region's forum united to secure funding to bolster infrastructure and enhance communication. It was agreed that Rotherham Parents Forum Limited, due to its policies and processes, should hold the grant on behalf of the region.

**VAR - Shared Prosperity fund**

The grant allowed us to deliver a number of positive activities for parent carers to help individuals struggling with the cost-of-living crisis.

**RMBC - unpaid Carers**

This was a small grant to support unpaid carers; we hosted several activities and provided wellbeing packs with the funds.

**RMBC Devolved Ward fund**

This funding was to support the development of an allotment project for our organisation, particularly the Rotherham Adult Neurodiversity Support Service, which supports neurodivergent adults.

**16 Financial commitments**

At the year end, the charity had annual commitments under non-cancellable operating leases as set out below:

Operating leases on land and buildings which expire:

	<b>2023</b>	<b>2022</b>
	<b>£</b>	<b>£</b>
Within one year	7,200	7,200
Within two to five years	9,600	16,800
	<u>16,800</u>	<u>24,000</u>

**Rotherham Parents Forum Limited**  
**Notes to the financial statements**  
**for the year ended 31 July 2023**

17

**Analysis of net assets between funds**

**2023**

	<b>Unrestricted funds £</b>	<b>Designated funds £</b>	<b>Restricted funds £</b>	<b>Total funds £</b>
Fixed assets	410	4,089	1,845	6,344
Current assets	3,676	-	244,782	248,458
Current liabilities	(7,635)	-	(65,451)	(73,086)
	<b><u>(3,549)</u></b>	<b><u>4,089</u></b>	<b><u>181,176</u></b>	<b><u>181,716</u></b>

**2022**

	<b>Unrestricted funds £</b>	<b>Designated funds £</b>	<b>Restricted funds £</b>	<b>Total funds £</b>
Fixed assets	547	4,176	2,539	7,262
Current assets	24,510	-	199,890	224,400
Current liabilities	(20,323)	-	(4,285)	(24,608)
	<b><u>4,734</u></b>	<b><u>4,176</u></b>	<b><u>198,144</u></b>	<b><u>207,054</u></b>

**18 Reconciliation of net (expenditure)/income to net cash flow from operating activities**

	<b>2023 £</b>	<b>2022 £</b>
Net income (as per the SOFA)	(25,338)	157,130
Depreciation of tangible fixed assets	2,115	2,421
Loss/(profit) on the disposal of fixed asset	-	221
(Increase)/ decrease in debtors	(171,129)	(29,020)
Increase/(decrease) in creditors	48,478	16,354
Net cash flow from operating activities	<b><u>(145,874)</u></b>	<b><u>147,106</u></b>