



CFS and SS Big Weekend Away – Feb 2024



charity registered in England No 1147116
www.churchfromscratch.org

Annual Report and Impact Statement for the year ending 31 December 2024

Table of Contents

Table of Contents	Page 2
Annual Report and Impact Statement	Page 3 - 9
Independent Examiner Report	Page 10 - 11
Statement of Financial Activity	Page 12
Statement of Assets and Liabilities	Page 13
Notes to the Accounts	Page 14 - 17



Annual Report and Impact Statement for the year ending 31 December 2024

Charitable status

Church from Scratch is a registered charity in England, No. 1147116.
Principal address: 34 Cranley Road, Westcliff-on-Sea, Essex, SS0 8AL.

Trustees serving during 2024:

Alex Emery
Mary Blake
Peter Dominey
Emma Nash (co-opted to stand for election January 2025)
Simon Hill (co-opted to stand for election January 2025)

The charity is established by means of a constitution with trustees appointed by the Partners (members).

Summary of Objects and Activities

Church from Scratch is a Christian church, a member of the Baptist Union of Great Britain and the Eastern Baptist Association.

The principal purpose of the Church is the advancement of the Christian faith according to the ways of Jesus as found in the Bible and which uphold the fundamentals of the Baptist denomination. The Church also advances education and carries out other charitable purposes in the United Kingdom and other parts of the world.

In addition to the reports set out below, our activities include holistic mission, public worship, prayer, Bible study, teaching, baptism, communion, pastoral care and social action, through a community comprising of, and working with many disadvantaged and marginalised people.

Public Benefit Statement

The charity's trustees continue to have regard for both the charitable objects set out in the governing document and to ensure that the activities of the charity, as described, meet the public benefit test. In so doing, they take account of the Charity Commission's public benefit guidance when planning the charity's programme of activities.

The Trustees of Church from Scratch are confident that the activities of the charity demonstrate strong evidence of public benefit.

Nature of the Church

Church From Scratch is a Jesus centred network of relationships, projects and initiatives; it is a Baptist church in South East Essex; responding to local needs and opportunities. The heart of the church is an inclusive family, many of whom are marginalised and disadvantaged by the ways of the world. The church acts as a pathfinder in Christian mission and as a change-agent.

A network of Community Groups in South East Essex

The Community Groups are foundational to Church From Scratch. These are often home-based and typically organise around a weekly meeting and meal where we work out what it means to live as followers of Jesus. They provide opportunity for discipleship and transformation as people develop relationships of trust together over the shared meals and through shared lives. British Sign Language is used in one to include the deaf.

Each Community Group is guided by one or more facilitators who are coached, encouraged and supported by the church leadership. Small-group discipleship resources are created by an in-house team of authors to resource the meetings.



During the year, people belonging to CFS have grown in faith and new people have joined as we share life and faith together, supporting each other with practical care for those among us facing serious mental and physical illness and difficult domestic situations.

The values of CFS

The four values have stood the test of time and sustained us as we find continuing and new ways to express and live them out. They hold us to the ways of Jesus and are at the centre of all that CFS is and aspires to be:

We value Jesus at the Centre: doing it his way; changing as we follow him deeper; relying on him; recognising we're a little bit of his worldwide church; realising Jesus' Spirit is at work now.

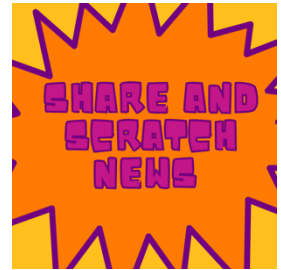
We value Building Community: building real and loving relationships as we rely on each other; growing up in faith together; giving our community away to others.

We value All people: moving wider to all; encouraging participation by all; standing up with those who need us.

We value Living life to the full: finding Jesus in all parts of life; holding on to faith as we take risks; helping each other to grow into the full and unique people God wants.

Activities, events and programmes during the year

This has been a good year for the church after a difficult 2023. We saw growing numbers of people in our Community Groups (house churches), strengthening leadership, baptisms and increased energy and expectation as we followed Jesus. This good news was reported in our now weekly email news and three times a year 'Share and Scratch News' newspaper which is written jointly with our sister social enterprise, Shared Space.



Monthly Gatherings - for people from across the church and Shared Space happened in a variety of venues providing additional ways for people to discover and develop their faith through discerning what Jesus has for us, musical worship and learning.

January

Partners Promise Meeting where people commit to each other to being 'Partners' for the year ahead, living out the values of CFS together.



February

Carrot Wood Weekend. A residential weekend in Kent with people from across the CFS community and the Shared Space shops. New friendships were made, and four sessions introduced people to Jesus in fresh ways. Teams cooked together and many other activities were held.



March

During Easter week we held four **Passover Meals** to help us understand Jesus better through themes of death, slavery and freedom. We also held events on Holy Saturday, and on Easter Sunday there was a BBQ celebration of resurrection.



May

Bless week was four days of special activities.

- Day 1: Blessed to be a blessing – retreat day
- Day 2: Bless Jesus - a worship banquet
- Day 3-4: Bless others - here CFS teams could go out and bless others

A session to learn **British Sign Language** with the help of a deaf member of the church, was well attended by the public and people in CFS and SS. Other ad hoc BSL training sessions occurred during the year.



A push to get people registered to vote

Many in CFS have never voted. We did our bit to encourage people to register and give them a voice.



June

Breadmaking day – a day of fellowship and prayer



July

Camping and discipleship weekend at Ivy Farm on Mersea Island with four teaching sessions - many coming would otherwise not have had a holiday during the year, many are not Christians.



August

Worship BBQ

Immersive Experience - we ran residential training for two trainee ministers, giving them a breadth of experience across CFS and Shared Space, supported by taught theological reflection sessions.

Table Talk Event – one of our learning meals, this time to explore the intersection of faith, spirituality and mental health.



September

Launch of new CFS Community Group – think of this as launching a new house church. The Monday night community was getting too large, so we established another community and both have taken root and continue to grow.



October

Baptisms of Sandra, Kim, Steph and Rosie and a monthly church gathering.

November

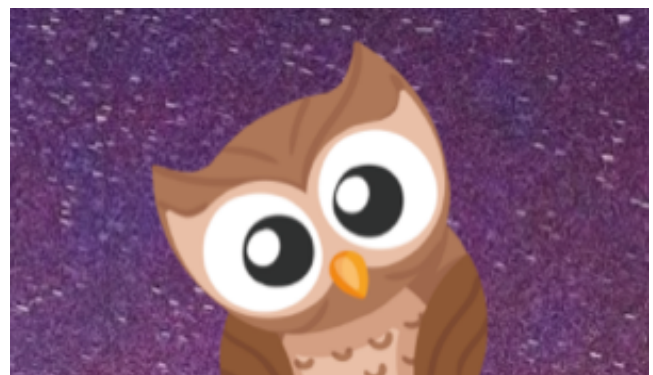
Farsi Bible Programme – arranging these Persian Bibles for asylum seekers we are supporting.



December

Christingles service and other Christmas events

Advent Night Owl – a series of zoom meetings, to help people prepare for Jesus' birth at Christmas, led by a diversity of people in the church.



Resource creation and sharing

In the year we created a variety of small group resources for use by CFS and to be shared with the wider church, along with a number of one-off resources.

The series included:

- **What matters?** - a deep dive into the CFS values
- **Easter**
- **Jesus and violence**
- **What hope looks like** – a series on 1 Thessalonians
- **Called to Pray** - a series on prayer
- **Difficult words and Jesus** - a series on biblical concepts including sin, grace, shalom and blessing
- **Jesus said, I am the...** - a series on the I am sayings of Jesus in John's Gospel
- **Baptism** - a discipleship mentoring course for pre and post baptism support
- **God is close** – a Christmas series
- **Several one-off resources**

Radical Roots

As the lead partner, we finally completed production of Radical Roots, a dramatic series of 10 videos, small group resources and supporting materials for use by Baptist churches in the country. A national launch is scheduled for the start of 2025.

We were delighted to work with the Baptist Historical Society on these resources which explore Baptist distinctives through our 400 year history as a movement. We worked in partnership with Baptists Together, supported by 7 Baptist associations and 2 Baptist colleges.

Partnership with Shared Space

Shared Space is the social enterprise CFS founded with which we closely partner. We run a variety of groups, residentials, training and initiatives with them, they have over 100 volunteers and our minister leads the charity.

Shared Space funding has made it possible for CFS to reduce its call on Baptist funding in recent

years on the journey towards CFS being self-supporting. We have scheduled a day for the start of 2025 to explore deeper cooperation and levels of integration between CFS and Shared Space, helped by an external facilitator.



Shared Space

Together Free

Our minister continues to serve as a founding trustee of this national charity, based in Southend. Together Free works towards ending modern slavery and human trafficking.



CFS Aims for 2025 includes

- **Centre all we do on Jesus, so we become more like him.**
- **To live and express the values of CFS in all we do.**
- Develop and work from the **CFS Development Plan**.
- Equip people of CFS to express and share the **good news of Jesus**, so people in and beyond Southend are transformed.
- **Write and publish** small group courses and videos, to assist CFS and other churches in their mission and discipleship.
- Build upon our partnership with **Shared Space social enterprise**, further replicating the Shared Space model and working with Shared Space in mission, finding new ways to partner with Shared Space around new and existing leaders.
- Develop the **Community Groups** in depth and number so we become more authentic and prevalent.
- Identify, train and nurture CFS people, so **leadership** is shared, and new Community Groups can be formed.
- Encourage greater **generosity** of time and money within and beyond CFS, to release resources for the mission we are called to.
- **Support Baptists and others in pioneering** so other people venture out in incarnational mission.
- **Share our resources and insights** through developments to the CFS website and through training events including Immersive Experiences.
- Be **receptive** to the opportunities and needs as they present, responding with agility so we don't miss the party.
- Support the newly formed anti-slavery and human trafficking charity called **Together Free** through our minister's time, given by CFS to be a trustee.
- Run **residential mission and discipleship events** as capacity allows, including weekends and holidays.

Accounting Basis

The accounts were prepared on a receipts and payments basis.

Reserves Policy

- Reserves will be maintained to ensure core activity can continue during any period of unforeseen difficulty.
- A proportion of reserves will be maintained in a readily realisable form.
- The calculation of the required level of reserves is an integral part of the organisation's planning, budget and forecast cycle and it considers:
 - Risks associated with each stream of income and expenditure being different from that budgeted
 - Planned activity level
 - The church's commitments

On this basis, and having reviewed the policy during the year, the Trustees believe that for 2025 a reserve equivalent to six months' running costs should be maintained. The reserves policy will be reviewed annually.

Signed: Peter Dominey on behalf of the trustees 28.2.25

A handwritten signature in dark ink, reading 'Peter Dominey', with a horizontal line underneath.

Independent Examiner's Report



**CHARITY COMMISSION
FOR ENGLAND AND WALES**

**Independent examiner's
report on the accounts**

Section A

Independent Examiner's Report

**Report to the trustees/
members of**

CHURCH FROM SCRATCH

**On accounts for the year
ended**

31st December 2024

**Charity no
(if any)**

1147116

Set out on pages

12-17

I report to the trustees on my examination of the accounts of the above charity ("the Trust") for the year ended 31/12/2024

**Responsibilities and
basis of report**

As the charity trustees of the Trust, you are responsible for the preparation of the accounts in accordance with the requirements of the Charities Act 2011 ("the Act")

I report in respect of my examination of the Trust's accounts carried out under section 145 of the 2011 Act and in carrying out my examination, I have followed the applicable Directions given by the Charity Commission under section 145(5)(b) of the Act.

**Independent
examiner's statement**

I have completed my examination. I confirm that no material matters have come to my attention in connection with the examination which give me cause to believe that in, any material respect:

- accounting records were not kept in accordance with section 130 of the Act
- the accounts do not accord with the accounting records

I have no reasons and have come across no other matters in connection with the examination to which attention should be drawn in order to enable a proper understanding of the accounts to be reached

Signed:

Date:

17 03 2025

Name:

ALAN HOOPER

**Relevant professional
qualification(s) or body
(if any):**

Address:

33A WOODLANDS ROAD

HOCKLEY

ESSEX SS5 4PL

Independent Examiner's Report continued...

Section B

Disclosure

Only complete if the examiner needs to highlight matters of concern (see CC32, Independent examination of charity accounts: directions and guidance for examiners)

Give here brief details of any items that the examiner wishes to disclose.

Statement of Financial Activity for the year ended 31.12.2024

	Note	Unrestricted Fund £	Designated Fund £	Restricted Fund £	Total 2024 £	Total 2023 £
<u>Incoming Resources</u>						
Incoming resources from generated funds						
Voluntary Income	2	29,962	1,360	10,792	42,114	29,585
Investment Income	4	755	-	-	755	553
Incoming resources from Charitable activities	3	12,159	-	-	12,159	12,471
Total Incoming Resources		42,875	1,360	10,792	55,027	42,609
<u>Resources Expended</u>						
Charitable Activities	5	37,502	1,773	10,792	50,067	45,760
Total Resources Used		37,502	1,773	10,792	50,067	45,760
Net (outgoing)/incoming resources		5,373 -	413	-	4,961	(3,151)
Transfer between funds - In		-	-	-	-	-
Transfer between funds - Out		-	-	-	-	-
Net movement in funds for year		5,373 -	413	-	4,961	(3,151)
Fund Balance at 1 January 2024		18,084	250	-	18,334	21,485
Fund Balance at 31 December 2024		23,457	(163)	-	23,295	18,334

Statement of Assets and Liabilities for the year ended 31.12.2024

	Unrestricted Fund	Designated Fund	Restricted Fund	Total 2024	Total 2023
	£	£	£	£	£
CASH FUNDS					
CAF Current	2,320	(163)	-	2,158	1,347
CAF Deposit	9,375	-	-	9,375	4,544
Paypal	24	-	-	24	24
Baptist Deposit - 7 Days Notice	0	-	-	-	1,169
Baptist Deposit - 3 months Notice	11,737			11,737	11,250
	<u>23,457</u>	<u>(163)</u>	<u>-</u>	<u>23,295</u>	<u>18,334</u>

REPRESENTED BY	2024	2023
Unrestricted		
General Fund	23,457	18,084
	<u>23,457</u>	<u>18,084</u>
Designated		
Pastoral	(163)	250
	<u>(163)</u>	<u>250</u>
Total reserves	<u>£ 23,295</u>	<u>£ 18,334</u>

Notes to the Accounts for the year ended 31.12.2024

1) Accounting Policies

a) **Basis of preparation**

The accounts are prepared in accordance with the Accounting Regulations set out under the Charities Act 2011. The accounts have been changed in 2015 to the Receipts and Payments method.

b) **Donations**

Donations are accounted for gross when received.

c) **Investment Income**

Investment income is included in the accounts the year it is received.

d) **Fund Raising and Publicity Costs**

The Church does not make formal appeals for funds, and expenditure on these items are therefore not material.

e) **Gifts in Kind**

No amounts are included in the financial statements for services donated by volunteers.

f) **Grants payable**

The Church makes grants to other organisations whose charitable objects complement its work. They are accounted for in the year they are paid.

g) **Taxation**

The charity is exempt from tax on its charitable activities.

h) **Fund Accounting**

Unrestricted funds can be used in accordance with the charitable objectives at the discretion of the trustees. Restricted funds can only be used for particular restricted purpose within the objects of the charity. Restrictions arise when specified by the donor or when funds are raised for a specific purposes.

Notes to the Accounts for the year ended 31.12.2024

2) Voluntary Income

	Unrestricted Fund		Restricted Fund	Total 2024	Total 2023
	General Fund	Pastoral	Home Mission		
Personal Giving	11,200	1,300	-	12,500	10,695
Income Tax recovered	4,031	-	-	4,031	-
Personal Giving via Stewardship Services	14,410	-	-	14,410	9,040
Grants from trusts and other organisations	-	-	10,792	10,792	9,500
Other	321	60	-	381	350
	29,962	1,360	10,792	42,114	29,585

3) Incoming Resources from Charitable Activities

	Unrestricted Fund		Restricted Fund	Total 2024	Total 2023
	General Fund	Pastoral	Home Mission		
Events - Whole Church	1,358	-	-	1,358	2,255
Grants for the provision of services	10,701	-	-	10,701	9,916
Preaching & Consultancy fee	100	-	-	100	220
Other	-	-	-	-	80
	12,159	-	-	12,159	12,471

4) Investment Income

	Unrestricted Fund		Restricted Fund	Total 2024	Total 2023
	General Fund	Pastoral	Home Mission		
Interest	755	-	-	755	553
	755	-	-	755	553

Notes to the Accounts for the year ended 31.12.2024

5) Charitable Activities

	Unrestricted Fund		Restricted Fund	Total 2024	Total 2023
	General Fund	Pastoral	Home Mission		
Direct Costs					
Ministry	30,895	-	10,792	41,687	37,775
Grants	2,664	-	-	2,664	2,065
Church activities	1,200	1,773	-	2,973	1,555
Events - whole Church	1,881	-	-	1,881	2,574
Events - Social media project	-	-	-	-	900
Events - Training run by CFS	-	-	-	-	-
Other	332	-	-	332	225
Support Costs					
Administration	522	-	-	522	359
Website / IT	8	-	-	8	307
	37,502	1,773	10,792	50,067	45,760

6) Trustee Remuneration and benefits

Trustees received a total remuneration of £39,843 inclusive of stipend, Housing allowance and pension contributions. (2023: £37,009).

7) Staff Costs

	2024	2023
Wages and salaries	39,843	37,009

During the year the Charity employed 1 members of staff, on a full time basis. No employee earned £60,000 p.a. or more.

Notes to the Accounts for the year ended 31.12.2024

8) Movement of funds

	2024				
	1/1/24	Incoming	Out goings	Transfers	12/31/24
Unrestricted					
General Fund	18,084	42,875	37,502	-	23,457
Designated					
Pastoral	250	1,360	1,773	-	(163)
Restricted					
Home Mission	-	10,792	10,792	-	-
	18,334	55,027	50,067	-	23,295

2024/2025 Giftaid tax refund not yet claimed. The giftaid will offset the Designated fund deficit.