



Those who braved the walk on the 2023 CFS Away Day



charity registered in England No 1147116
www.churchfromscratch.org

Annual Report and Impact Statement for the year ending 31 December 2023

Table of Contents

Table of Contents	Page 2
Annual Report and Impact Statement	Page 3 - 9
Independent Examiner Report	Page 10 - 11
Statement of Financial Activity	Page 12
Statement of Assets and Liabilities	Page 13
Notes to the Accounts	Page 14 - 17



Annual Report and Impact Statement for the year ending 31 December 2023

Charitable status

Church from Scratch is a registered charity in England, No. 1147116.
Principal address: 34 Cranley Road, Westcliff-on-Sea, Essex, SS0 8AL.

Trustees serving during 2023:

Alex Emery
Mary Blake
Peter Dominey

The charity is established by means of a constitution with trustees appointed by the Partners (members).

Summary of Objects and Activities

Church from Scratch is a Christian church, a member of the Baptist Union of Great Britain and the Eastern Baptist Association.

The principal purpose of the Church is the advancement of the Christian faith according to the ways of Jesus as found in the Bible and which uphold the fundamentals of the Baptist denomination. The Church also advances education and carries out other charitable purposes in the United Kingdom and other parts of the world.

In addition to the reports set out below, our activities include holistic mission, public worship, prayer, Bible study, teaching, baptism, communion, pastoral care and social action, through a community comprising of, and working with many disadvantaged people.

Public Benefit Statement

The charity's trustees continue to have regard for both the charitable objects set out in the governing document and to ensure that the activities of the charity, as described, meet the public benefit test. In so doing, they take account of the Charity Commission's public benefit guidance when planning the charity's programme of activities.
The Trustees of Church from Scratch are confident that the activities of the charity demonstrate strong evidence of public benefit.

Nature of the Church

Church from Scratch is a Jesus centred network of communal groups, projects and initiatives concentrated in south east Essex; responding to local needs and opportunities – an inclusive church family of people who are typically marginalised and disadvantaged. The church acts as a pathfinder in Christian mission and as a change-agent.

A network of community groups in south east Essex

At the heart of CFS is the community groups. These are often home-based and typically organise around a weekly meeting where we work out what it means to live as followers of Jesus. The communities can be found in south east Essex. They provide opportunities for discipleship and transformation as people develop relationships of trust together over shared meals and through shared lives. Many marginalised and disadvantaged people are part of the groups, and British Sign Language is used in one to include the deaf.



Group work at a CFS gathering

Each community is guided by one or more facilitators who are coached, encouraged and supported by the church leadership. Small-group discipleship resources are created by an in-house team of authors to resource the meetings.

During 2023, people belonging to CFS have grown in faith and new people have joined as we share life and faith together, supporting each other with practical care for those among us facing serious mental and physical illness and difficult domestic situations.

The 4 foundational values of CFS

These values have stood the test of time over the years and sustained us as we find continuing and new ways to express and live them out. They hold us to the ways of Jesus and are at the centre of all that CFS is and aspires to be:

We value Jesus at the Centre: doing it his way; changing as we follow him deeper; relying on him; recognising we're a little bit of his worldwide church; realising Jesus' Spirit is at work now.

We value Building Community: building real and loving relationships as we rely on each other; growing up in faith together; giving our community away to others.

We value All people: moving wider to all; encouraging participation by all; standing up with those who need us.

We value Living life to the full: finding Jesus in all parts of life; holding on to faith as we take risks; helping each other to grow into the full and unique people God wants.

Activities, events and programmes in 2023

We continued to follow these four priorities

We sensed these were needed to unlock our future and help us live out the values on which CFS is founded. The priorities were:

1. **Fostering passionate spirituality**
re-founding CFS on Jesus in a closer relationship with him.
2. **Building deeper connections**
helping us to belong to each other across the groups of CFS.
3. **Reaching new people**
with a focus on re-building opportunities for families, young adults and children.
4. **Increasing capacity***
finding the people, time & money we need to help CFS sustainably grow and deepen.

** CFS is a church with exceptionally poor people compared to typical churches, but we are strong on love, community, faith and life. We're deeply grateful to Christians from other local churches who give generously to CFS, wishing to support our distinctive mission.*

During the year

Supporting the Shared Space volunteer community

We facilitated meetings and holidays for the 100 Shared Space volunteers.

Table Talks - Theological Reflection Meals

We held theological reflections over zoom and in person to develop people's ability to think as Christians and teach theological reflection skill to participants.



Volunteers in one of the Shared Space shops

Activities throughout the year

This has been a difficult year for Church From Scratch with our minister having limited capacity due to a close member of his family being extremely unwell since a year ago last May and the knock-on effects of this. As a church we have walked closely with them in this, and it has been good to see others in the church taking on additional responsibilities to share the load and our ministers capacity starting to return.

Monthly Gatherings - For people from across the church and Shared Space in various venues, with musical worship, exploring themes and discerning what Jesus has for us.

January

Church Questionnaire to consult all in the church and be more responsive to opportunities and need.

Partners Promise meeting where people commit to being 'Partners' for the year ahead, living out the values of CFS together.

February

Church Away Day which included asylum seekers. A time of sharing Jesus and growing.

March

Monthly gathering to follow Jesus.

April

During Easter week we held Passover meals to help us understand Jesus better, and events based on Holy Saturday, Easter Sunday was a celebration.

May

A monthly gathering

British Sign Language sessions with the help of a deaf member of the church to help the public and people in CFS better include and communicate with deaf people.

June

Church camping and discipleship weekend at Ivy Farm on Mersea Island with four teaching sessions - many coming would otherwise not have had a holiday during the year.

Table Talk – a theological reflection on the place of doubt and faith called, 'Faithful Doubting'.

July

Worship BBQ – with guest speaker on making good decisions.
Summer Camp on Mersea Island

August Bless Week

Be Blessed - looking at the Beatitudes
Bless Jesus - a time of worship, prayer and communion
Bless people - cream tea, trip to London for refugees, etc.

September

Church Discipleship camping weekend in Forge Wood, Sussex for CFS and Shared Space.

October

Monthly church gathering with BBQ and worship.

November

Outreach fireworks and fellowship party and prayer event.
Safeguarding training organised by CFS in line with Policies and Procedures



Church Away Day in South Woodham Ferrers



Summer Camp

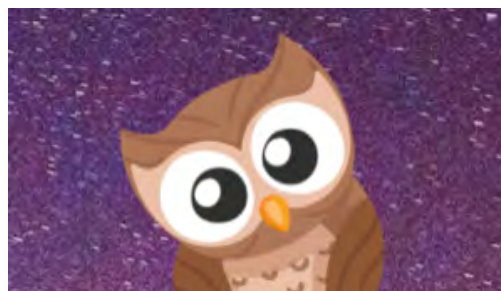
December

Advent Night Owl - weekly online meetings again at 9:30pm providing an hour-long end to the day, in a quiet and reflective space.

An Advent Makers Event - looking forward to God's promises of Christmas through making of things!

Table Talk theological reflection meal on Christian ethics called "Right and wrong".

Christmas party



Night Owl

Resource creation and sharing

In 2023 we created and revised a series of small group resources for use by CFS and to be shared with the wider church along with a number of one-off resources. The series included:

- CFS Values – Partners' Pledge
- Looking out of our tent – Response to CFS Questionnaire
- Jesus in the Psalms
- The Road to Jerusalem
- The Road from Jerusalem
- What is the Bible? – Ways to read the Bible
- Jesus the Misunderstood
- Salt and Light
- Difficult Bible Words
- Advent

International Deployments

We continue to support Dan and Annie Dupree. Dan was our student minister and they now work in Albania with the Roma people among others. We continued to support and encourage them. When they visited us this year they encouraged us by sharing how God is leading them in Albania.



Dan and Annie Dupree

Partnership with Shared Space

Shared Space is the social enterprise CFS founded with which we closely partner. We run a variety of groups, residentials, training and initiatives with Shared Space.

Our minister leads the work of Shared Space, and at the start of the year developed it to include new work with refugees and asylum seekers in Southend with which we are actively partnering.



One of the 100 Shared Space volunteers

CFS Aims for 2024 includes

- **Centre all we do on Jesus, so we become more like him.**
- **To live and express the values of CFS in all we do.**
- Develop and work from the **CFS Development Plan.**
- Equip people of CFS to express and share the **good news of Jesus**, so people in and beyond Southend are transformed.
- **Write and publish** small group courses and videos, to assist CFS and other churches in their mission and discipleship.
- Build upon our partnership with **Shared Space social enterprise**, further replicating the Shared Space model and working with Shared Space in mission, finding new ways to partner with Shared Space around new and existing leaders.
- Develop the **Community Groups** in depth and number so we become more authentic and prevalent.
- Identify, train and nurture CFS people, so **leadership** is shared, and new Community Groups can be formed.
- Encourage greater **generosity** of time and money within and beyond CFS, to release resources for the mission we are called to.
- **Support Baptists and others in pioneering** so other people venture out in incarnational mission.
- **Share our resources and insights** through developments to the CFS website and through training events including Immersive Experiences.
- Be **receptive** to the opportunities and needs as they present, responding with agility so we don't miss the party.
- Support the newly formed anti-slavery and human trafficking charity called **Together Free** through our minister's time, given by CFS to be a trustee.
- Run **residential mission and discipleship events** as capacity allows, including weekends and holidays.

Accounting Basis

The accounts were prepared on a receipts and payments basis.

Reserves Policy

- Reserves will be maintained to ensure core activity can continue during any period of unforeseen difficulty.
- A proportion of reserves will be maintained in a readily realisable form.
- The calculation of the required level of reserves is an integral part of the organisation's planning, budget and forecast cycle and it considers:
 - Risks associated with each stream of income and expenditure being different from that budgeted
 - Planned activity level
 - The church's commitments

On this basis, and having reviewed the policy during the year, the Trustees believe that for 2024 a reserve equivalent to six months' running costs should be maintained. The reserves policy will be reviewed annually.



Mary Blake
Church Secretary on behalf of Church from Scratch
29 January 2024

Independent Examiner's Report

Independent Examiner's Report



**CHARITY COMMISSION
FOR ENGLAND AND WALES**

**Independent examiner's
report on the accounts**

Report to the trustees/ members of	CHURCH FROM SCRATCH		
On accounts for the year ended	31 st December 2023	Charity no (if any)	1147116
Set out on pages	12 to 17		

I report to the trustees on my examination of the accounts of the above charity ("the Trust") for the year ended 31/12/2022.

Responsibilities and basis of report As the charity trustees of the Trust, you are responsible for the preparation of the accounts in accordance with the requirements of the Charities Act 2011 ("the Act").

I report in respect of my examination of the Trust's accounts carried out under section 145 of the 2011 Act and in carrying out my examination, I have followed the applicable Directions given by the Charity Commission under section 145(5)(b) of the Act.

**Independent
examiner's statement**

I have completed my examination. I confirm that no material matters have come to my attention in connection with the examination which gives me cause to believe that in, any material respect:

- accounting records were not kept in accordance with section 130 of the Act or
- the accounts do not accord with the accounting records

I have no concerns and have come across no other matters in connection with the examination to which attention should be drawn in order to enable a proper understanding of the accounts to be reached.

Signed:  Date: 04/03/2024

Name: ALAN HOOPER

Relevant professional
qualification(s) or body
(if any):

Address: 33A WOODLANDS ROAD
HOCKELY
ESSEX SS5 4PL

Independent Examiner’s Report continued...

Only complete if the examiner needs to highlight matters of concern (see CC32, Independent examination of charity accounts: directions and guidance for examiners).

Give here brief details of any items that the examiner wishes to disclose.

Statement of Financial Activity for the year ended 31.12.2023

	Note	Unrestricted Fund £	Designated Fund £	Restricted Fund £	Total 2023 £	Total 2022 £
<u>Incoming Resources</u>						
Incoming resources from generated funds						
Voluntary Income	2	19,185	-	10,400	29,585	34,593
Investment Income	4	553	-	-	553	55
Incoming resources from Charitable activities	3	12,471	-	-	12,471	12,349
Total Incoming Resources		32,209	-	10,400	42,609	46,996
<u>Resources Expended</u>						
Charitable Activities	5	35,360	-	10,400	45,760	53,356
Total Resources Used		35,360	-	10,400	45,760	53,356
Net (outgoing)/incoming resources		(3,151)	-	-	(3,151)	(6,360)
Transfer between funds - In		-	-	-	-	2,128
Transfer between funds - Out		-	-	-	-	(2,128)
Net movement in funds for year		(3,151)	-	-	(3,151)	(6,360)
Fund Balance at 1 January 2023		21,235	250	-	21,485	27,845
Fund Balance at 31 December 2023		18,084	250	-	18,334	21,485

Statement of Assets and Liabilities for the year ended 31.12.2023

CASH FUNDS

CAF Current
CAF Deposit
Paypal
Baptist Deposit - 7 Days Notice
Baptist Deposit - 3 months Notice

Unrestricted Fund £	Designated Fund £	Restricted Fund £	Total 2023 £	Total 2022 £
1,097	250	-	1,347	17,843
4,544	-	-	4,544	3,617
24	-	-	24	24
1,169	-	-	1,169	-
11,250	-	-	11,250	-
18,084	250	-	18,334	21,485

REPRESENTED BY

Unrestricted

General Fund

Designated

Pastoral

Total reserves

2023	2022
18,084	21,235
18,084	21,235
250	250
250	250
£ 18,334	£ 21,485

Signed: Peter Dominey (trustee) 29th January 2024



Signed: Mary Blake (Church Secretary) 29th January 2024



Notes to the Accounts for the year ended 31.12.2023

1) Accounting Policies

a) **Basis of preparation**

The accounts are prepared in accordance with the Accounting Regulations set out under the Charities Act 2011. The accounts have been changed in 2015 to the Receipts and Payments method.

b) **Donations**

Donations are accounted for gross when received.

c) **Investment Income**

Investment income is included in the accounts the year it is received.

d) **Fund Raising and Publicity Costs**

The Church does not make formal appeals for funds, and expenditure on these items are therefore not material.

e) **Gifts in Kind**

No amounts are included in the financial statements for services donated by volunteers.

f) **Grants payable**

The Church makes grants to other organisations whose charitable objects complement its work. They are accounted for in the year they are paid.

g) **Taxation**

The charity is exempt from tax on its charitable activities.

h) **Fund Accounting**

Unrestricted funds can be used in accordance with the charitable objectives at the discretion of the trustees. Restricted funds can only be used for particular restricted purposes within the objects of the charity. Restrictions arise when specified by the donor or when funds are raised for a specific purposes.

Notes to the Accounts for the year ended 31.12.2023

2) Voluntary Income

	Unrestricted Fund	Restricted Fund	Total 2023	Total 2022
	General Fund	Home Mission/ Radical Roots		
Personal Giving	10,695	-	10,695	9,665
Income Tax recovered	-	-	-	3,888
Personal Giving via Stewardship Services	8,140	900	9,040	13,040
Grants from trusts and other organisations	-	9,500	9,500	8,000
Other	350	-	350	-
	19,185	10,400	29,585	34,593

12 months gift aid of £1,690 from 2022/2023 will be claimed in 2024.

3) Incoming Resources from Charitable Activities

	Unrestricted Fund	Restricted Fund	Total 2023	Total 2022
	General Fund	Home Mission/ Radical Roots		
Events - Whole Church	2,255	-	2,255	1,110
Grants for the provision of services	9,916	-	9,916	11,104
Preaching & Consultancy fee	220	-	220	75
Other	80	-	80	60
	12,471	-	12,471	12,349

4) Investment Income

	Unrestricted Fund	Restricted Fund	Total 2023	Total 2022
	General Fund	Home Mission/ Radical Roots		
Interest	553	-	553	55
	553	-	553	55

Notes to the Accounts for the year ended 31.12.2023

5) Charitable Activities

	Unrestricted Fund	Restricted Fund	Total 2023	Total 2022
	General Fund	Home Mission/ Radical Roots		
Direct Costs				
Ministry	28,275	9,500	37,775	42,663
Grants	2,065	-	2,065	2,065
Church activities	1,555	-	1,555	805
Events - whole Church	2,574	-	2,574	207
Events - Social media project	-	900	900	5,272
Events - Training run by CFS	-	-	-	125
Other	225	-	225	1,098
Support Costs				
Administration	359	-	359	363
Website/IT	307	-	307	758
	35,360	10,400	45,760	53,356

6) Trustee Remuneration and benefits

Trustees received a total remuneration of £37,009 inclusive of stipend, Housing allowance and pension contributions. (2022: £35,816).

7) Staff Costs

	2023	2022
Wages and salaries	37,009	40,773

During the year the Charity employed 1 members of staff, on a full time basis. Natalie Hughes finished her Minister in Training part time role for CFS in June 2022. No employee earned £60,000 p.a. or more.

Notes to the Accounts for the year ended 31.12.2023

8) Movement of funds

	2023				
	01/01/2023	Incoming	Out goings	Transfers	31/12/2023
Unrestricted					
General Fund	21,235	32,209	35,360	-	18,084
Designated					
Pastoral	250	-	-	-	250
Restricted					
Home Mission	-	9,500	9,500	-	-
Radical Roots	-	900	900	-	-
	21,485	42,609	45,760	-	18,334