

CHURCH FROM SCRATCH

England & Wales - Charity number 1147116

Details

Status Registered

Legal form Other

Registered 2012-05-03

Register [View on the Charity Commission register](#)

Contact

Address 34 Cranley Road
Westcliff-On-Sea
Essex
SS0 8AL

Phone 01702 668477

Email info@churchfromscratch.org

Website www.churchfromscratch.org

Activities

Objects: THE PRINCIPAL PURPOSE OF THE CHURCH IS THE ADVANCEMENT OF THE CHRISTIAN FAITH ACCORDING TO THE PRINCIPLES OF THE BAPTIST DENOMINATION. THE CHURCH MAY ALSO ADVANCE EDUCATION AND CARRY OUT OTHER CHARITABLE PURPOSES IN THE UNITED KINGDOM AND/OR OTHER PARTS OF THE WORLD.

Activities: Evangelism and mission; regular worship; baptism and communion; the nurture and growth of Christian disciples; training and education in Christian service; giving and encouraging pastoral care; supporting and encouraging charitable actions; encouraging and supporting relationships with Baptists and other Christians; social enterprise.

Classification

- **How:** Provides Services
- **What:** General Charitable Purposes, Religious Activities, Economic/community Development/employment
- **Who:** The General Public/mankind

Geography

- Essex
- Southend-on-sea

Finances

| Period end | Income | Expenditure | Assets | Employees |
|------------|---------|-------------|--------|-----------|
| 2024-12-31 | £55,027 | £50,067 | - | - |
| 2023-12-31 | £42,609 | £45,760 | - | - |
| 2022-12-31 | £46,996 | £53,356 | - | - |
| 2021-12-31 | £71,073 | £64,480 | - | - |
| 2020-12-31 | £46,137 | £46,125 | - | - |

Trustees

| Name | Role | Appointed |
|----------------------|-------|------------|
| Peter Dominey | Chair | 2012-04-30 |
| Emma Jacqueline Nash | | 2025-01-12 |
| Simon Benjamin Hill | | 2025-01-12 |

CHURCH FROM SCRATCH

England & Wales - Charity number 1147116

Accounts



CFS and SS Big Weekend Away – Feb 2024

CHURCH  SCRATCH

charity registered in England No 1147116
www.churchfromscratch.org

Annual Report and Impact Statement for the year ending 31 December 2024

Table of Contents

| | |
|-------------------------------------|--------------|
| Table of Contents | Page 2 |
| Annual Report and Impact Statement | Page 3 - 9 |
| Independent Examiner Report | Page 10 - 11 |
| Statement of Financial Activity | Page 12 |
| Statement of Assets and Liabilities | Page 13 |
| Notes to the Accounts | Page 14 - 17 |



Annual Report and Impact Statement for the year ending 31 December 2024

Charitable status

Church from Scratch is a registered charity in England, No. 1147116.
Principal address: 34 Cranley Road, Westcliff-on-Sea, Essex, SS0 8AL.

Trustees serving during 2024:

Alex Emery
Mary Blake
Peter Dominey
Emma Nash (co-opted to stand for election January 2025)
Simon Hill (co-opted to stand for election January 2025)

The charity is established by means of a constitution with trustees appointed by the Partners (members).

Summary of Objects and Activities

Church from Scratch is a Christian church, a member of the Baptist Union of Great Britain and the Eastern Baptist Association.

The principal purpose of the Church is the advancement of the Christian faith according to the ways of Jesus as found in the Bible and which uphold the fundamentals of the Baptist denomination. The Church also advances education and carries out other charitable purposes in the United Kingdom and other parts of the world.

In addition to the reports set out below, our activities include holistic mission, public worship, prayer, Bible study, teaching, baptism, communion, pastoral care and social action, through a community comprising of, and working with many disadvantaged and marginalised people.

Public Benefit Statement

The charity's trustees continue to have regard for both the charitable objects set out in the governing document and to ensure that the activities of the charity, as described, meet the public benefit test. In so doing, they take account of the Charity Commission's public benefit guidance when planning the charity's programme of activities.

The Trustees of Church from Scratch are confident that the activities of the charity demonstrate strong evidence of public benefit.

Nature of the Church

Church From Scratch is a Jesus centred network of relationships, projects and initiatives; it is a Baptist church in South East Essex; responding to local needs and opportunities. The heart of the church is an inclusive family, many of whom are marginalised and disadvantaged by the ways of the world. The church acts as a pathfinder in Christian mission and as a change-agent.

A network of Community Groups in South East Essex

The Community Groups are foundational to Church From Scratch. These are often home-based and typically organise around a weekly meeting and meal where we work out what it means to live as followers of Jesus. They provide opportunity for discipleship and transformation as people develop relationships of trust together over the shared meals and through shared lives. British Sign Language is used in one to include the deaf.



Each Community Group is guided by one or more facilitators who are coached, encouraged and supported by the church leadership. Small-group discipleship resources are created by an in-house team of authors to resource the meetings.

During the year, people belonging to CFS have grown in faith and new people have joined as we share life and faith together, supporting each other with practical care for those among us facing serious mental and physical illness and difficult domestic situations.

The values of CFS

The four values have stood the test of time and sustained us as we find continuing and new ways to express and live them out. They hold us to the ways of Jesus and are at the centre of all that CFS is and aspires to be:

We value Jesus at the Centre: doing it his way; changing as we follow him deeper; relying on him; recognising we're a little bit of his worldwide church; realising Jesus' Spirit is at work now.

We value Building Community: building real and loving relationships as we rely on each other; growing up in faith together; giving our community away to others.

We value All people: moving wider to all; encouraging participation by all; standing up with those who need us.

We value Living life to the full: finding Jesus in all parts of life; holding on to faith as we take risks; helping each other to grow into the full and unique people God wants.

Activities, events and programmes during the year

This has been a good year for the church after a difficult 2023. We saw growing numbers of people in our Community Groups (house churches), strengthening leadership, baptisms and increased energy and expectation as we followed Jesus. This good news was reported in our now weekly email news and three times a year 'Share and Scratch News' newspaper which is written jointly with our sister social enterprise, Shared Space.



Monthly Gatherings - for people from across the church and Shared Space happened in a variety of venues providing additional ways for people to discover and develop their faith through discerning what Jesus has for us, musical worship and learning.

January

Partners Promise Meeting where people commit to each other to being 'Partners' for the year ahead, living out the values of CFS together.



February

Carrot Wood Weekend. A residential weekend in Kent with people from across the CFS community and the Shared Space shops. New friendships were made, and four sessions introduced people to Jesus in fresh ways. Teams cooked together and many other activities were held.

March

During Easter week we held four **Passover Meals** to help us understand Jesus better through themes of death, slavery and freedom. We also held events on Holy Saturday, and on Easter Sunday there was a BBQ celebration of resurrection.



May

Bless week was four days of special activities.

- Day 1: Blessed to be a blessing – retreat day
- Day 2: Bless Jesus - a worship banquet
- Day 3-4: Bless others - here CFS teams could go out and bless others



A session to learn **British Sign Language** with the help of a deaf member of the church, was well attended by the public and people in CFS and SS. Other ad hoc BSL training sessions occurred during the year.



A push to get people registered to vote

Many in CFS have never voted. We did our bit to encourage people to register and give them a voice.



June

Breadmaking day – a day of fellowship and prayer



July

Camping and discipleship weekend at Ivy Farm on Mersea Island with four teaching sessions - many coming would otherwise not have had a holiday during the year, many are not Christians.



August

Worship BBQ

Immersive Experience - we ran residential training for two trainee ministers, giving them a breadth of experience across CFS and Shared Space, supported by taught theological reflection sessions.

Table Talk Event – one of our learning meals, this time to explore the intersection of faith, spirituality and mental health.



September

Launch of new CFS Community Group – think of this as launching a new house church. The Monday night community was getting too large, so we established another community and both have taken root and continue to grow.



October

Baptisms of Sandra, Kim, Steph and Rosie and a monthly church gathering.

November

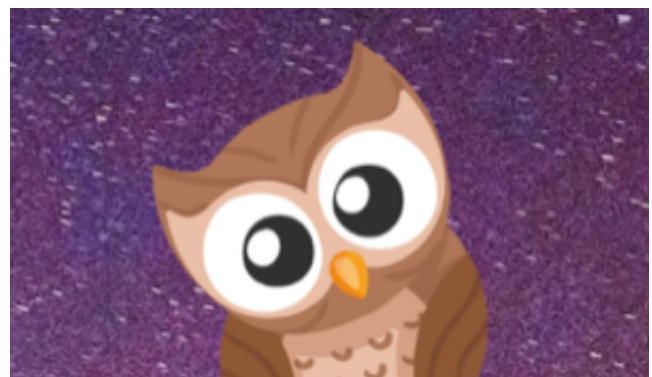
Farsi Bible Programme – arranging these Persian Bibles for asylum seekers we are supporting.



December

Christingles service and other Christmas events

Advent Night Owl – a series of zoom meetings, to help people prepare for Jesus' birth at Christmas, led by a diversity of people in the church.



Resource creation and sharing

In the year we created a variety of small group resources for use by CFS and to be shared with the wider church, along with a number of one-off resources.

The series included:

- **What matters?** - a deep dive into the CFS values
- **Easter**
- **Jesus and violence**
- **What hope looks like** – a series on 1 Thessalonians
- **Called to Pray** - a series on prayer
- **Difficult words and Jesus** - a series on biblical concepts including sin, grace, shalom and blessing
- **Jesus said, I am the...** - a series on the I am sayings of Jesus in John's Gospel
- **Baptism** - a discipleship mentoring course for pre and post baptism support
- **God is close** – a Christmas series
- **Several one-off resources**

Radical Roots

As the lead partner, we finally completed production of Radical Roots, a dramatic series of 10 videos, small group resources and supporting materials for use by Baptist churches in the country. A national launch is scheduled for the start of 2025.

We were delighted to work with the Baptist Historical Society on these resources which explore Baptist distinctives through our 400 year history as a movement. We worked in partnership with Baptists Together, supported by 7 Baptist associations and 2 Baptist colleges.

Partnership with Shared Space

Shared Space is the social enterprise CFS founded with which we closely partner. We run a variety of groups, residentials, training and initiatives with them, they have over 100 volunteers and our minister leads the charity.

Shared Space funding has made it possible for CFS to reduce its call on Baptist funding in recent

years on the journey towards CFS being self-supporting. We have scheduled a day for the start of 2025 to explore deeper cooperation and levels of integration between CFS and Shared Space, helped by an external facilitator.



Shared Space

Together Free

Our minister continues to serve as a founding trustee of this national charity, based in Southend. Together Free works towards ending modern slavery and human trafficking.



CFS Aims for 2025 includes

- **Centre all we do on Jesus, so we become more like him.**
- **To live and express the values of CFS in all we do.**
- Develop and work from the **CFS Development Plan**.
- Equip people of CFS to express and share the **good news of Jesus**, so people in and beyond Southend are transformed.
- **Write and publish** small group courses and videos, to assist CFS and other churches in their mission and discipleship.
- Build upon our partnership with **Shared Space social enterprise**, further replicating the Shared Space model and working with Shared Space in mission, finding new ways to partner with Shared Space around new and existing leaders.
- Develop the **Community Groups** in depth and number so we become more authentic and prevalent.
- Identify, train and nurture CFS people, so **leadership** is shared, and new Community Groups can be formed.
- Encourage greater **generosity** of time and money within and beyond CFS, to release resources for the mission we are called to.
- **Support Baptists and others in pioneering** so other people venture out in incarnational mission.
- **Share our resources and insights** through developments to the CFS website and through training events including Immersive Experiences.
- Be **receptive** to the opportunities and needs as they present, responding with agility so we don't miss the party.
- Support the newly formed anti-slavery and human trafficking charity called **Together Free** through our minister's time, given by CFS to be a trustee.
- Run **residential mission and discipleship events** as capacity allows, including weekends and holidays.

Accounting Basis

The accounts were prepared on a receipts and payments basis.

Reserves Policy

- Reserves will be maintained to ensure core activity can continue during any period of unforeseen difficulty.
- A proportion of reserves will be maintained in a readily realisable form.
- The calculation of the required level of reserves is an integral part of the organisation's planning, budget and forecast cycle and it considers:
 - Risks associated with each stream of income and expenditure being different from that budgeted
 - Planned activity level
 - The church's commitments

On this basis, and having reviewed the policy during the year, the Trustees believe that for 2025 a reserve equivalent to six months' running costs should be maintained. The reserves policy will be reviewed annually.

Signed: Peter Dominey on behalf of the trustees 28.2.25

A handwritten signature in dark ink, reading "Peter Dominey". The signature is written in a cursive style with a long horizontal flourish underneath.

Independent Examiner's Report



**CHARITY COMMISSION
FOR ENGLAND AND WALES**

**Independent examiner's
report on the accounts**

Section A

Independent Examiner's Report

**Report to the trustees/
members of**

CHURCH FROM SCRATCH

**On accounts for the year
ended**

31st December 2024

**Charity no
(if any)**

1147116

Set out on pages

12-17

I report to the trustees on my examination of the accounts of the above charity ("the Trust") for the year ended 31/12/2024

**Responsibilities and
basis of report**

As the charity trustees of the Trust, you are responsible for the preparation of the accounts in accordance with the requirements of the Charities Act 2011 ("the Act")

I report in respect of my examination of the Trust's accounts carried out under section 145 of the 2011 Act and in carrying out my examination, I have followed the applicable Directions given by the Charity Commission under section 145(5)(b) of the Act.

**Independent
examiner's statement**

I have completed my examination. I confirm that no material matters have come to my attention in connection with the examination which give me cause to believe that in, any material respect:

- accounting records were not kept in accordance with section 130 of the Act
- the accounts do not accord with the accounting records

~~I have no concerns and have come across no other matters in connection with the examination to which attention should be drawn in order to enable a proper understanding of the accounts to be reached~~

Signed:

Date:

17 03 2025

Name:

ALAN HOOPER

**Relevant professional
qualification(s) or body
(if any):**

Address:

33A WOODLANDS ROAD

HOCKLEY

ESSEX SS5 4PL

Independent Examiner's Report continued...

Section B

Conclusion

Only complete if the examiner needs to highlight matters of concern (see CC32).
Independent examination of charity accounts: directions and guidance for examiners

Give here brief details of any items that the examiner wishes to disclose.

Statement of Financial Activity for the year ended 31.12.2024

| | Note | Unrestricted Fund £ | Designated Fund £ | Restricted Fund £ | Total 2024 £ | Total 2023 £ |
|---|------|---------------------------|-------------------------|-------------------------|--------------------|--------------------|
| <u>Incoming Resources</u> | | | | | | |
| Incoming resources from generated funds | | | | | | |
| Voluntary Income | 2 | 29,962 | 1,360 | 10,792 | 42,114 | 29,585 |
| Investment Income | 4 | 755 | - | - | 755 | 553 |
| Incoming resources from Charitable activities | 3 | 12,159 | - | - | 12,159 | 12,471 |
| Total Incoming Resources | | 42,875 | 1,360 | 10,792 | 55,027 | 42,609 |
| <u>Resources Expended</u> | | | | | | |
| Charitable Activities | 5 | 37,502 | 1,773 | 10,792 | 50,067 | 45,760 |
| Total Resources Used | | 37,502 | 1,773 | 10,792 | 50,067 | 45,760 |
| Net (outgoing)/incoming resources | | 5,373 - | 413 | - | 4,961 | (3,151) |
| Transfer between funds - In | | - | - | - | - | - |
| Transfer between funds - Out | | - | - | - | - | - |
| Net movement in funds for year | | 5,373 - | 413 | - | 4,961 | (3,151) |
| Fund Balance at 1 January 2024 | | 18,084 | 250 | - | 18,334 | 21,485 |
| Fund Balance at 31 December 2024 | | 23,457 | (163) | - | 23,295 | 18,334 |

Statement of Assets and Liabilities for the year ended 31.12.2024

| | Unrestricted Fund | Designated Fund | Restricted Fund | Total 2024 | Total 2023 |
|-----------------------------------|----------------------|--------------------|--------------------|---------------|---------------|
| | £ | £ | £ | £ | £ |
| CASH FUNDS | | | | | |
| CAF Current | 2,320 | (163) | - | 2,158 | 1,347 |
| CAF Deposit | 9,375 | - | - | 9,375 | 4,544 |
| Paypal | 24 | - | - | 24 | 24 |
| Baptist Deposit - 7 Days Notice | 0 | - | - | - | 1,169 |
| Baptist Deposit - 3 months Notice | 11,737 | - | - | 11,737 | 11,250 |
| | <u>23,457</u> | <u>(163)</u> | <u>-</u> | <u>23,295</u> | <u>18,334</u> |

| REPRESENTED BY | 2024 | 2023 |
|-----------------------|-----------------|-----------------|
| Unrestricted | | |
| General Fund | 23,457 | 18,084 |
| | <u>23,457</u> | <u>18,084</u> |
| Designated | | |
| Pastoral | (163) | 250 |
| | <u>(163)</u> | <u>250</u> |
| Total reserves | £ <u>23,295</u> | £ <u>18,334</u> |

Notes to the Accounts for the year ended 31.12.2024

1) Accounting Policies

a) **Basis of preparation**

The accounts are prepared in accordance with the Accounting Regulations set out under the Charities Act 2011. The accounts have been changed in 2015 to the Receipts and Payments method.

b) **Donations**

Donations are accounted for gross when received.

c) **Investment Income**

Investment income is included in the accounts the year it is received.

d) **Fund Raising and Publicity Costs**

The Church does not make formal appeals for funds, and expenditure on these items are therefore not material.

e) **Gifts in Kind**

No amounts are included in the financial statements for services donated by volunteers.

f) **Grants payable**

The Church makes grants to other organisations whose charitable objects complement its work. They are accounted for in the year they are paid.

g) **Taxation**

The charity is exempt from tax on its charitable activities.

h) **Fund Accounting**

Unrestricted funds can be used in accordance with the charitable objectives at the discretion of the trustees. Restricted funds can only be used for particular restricted purpose within the objects of the charity. Restrictions arise when specified by the donor or when funds are raised for a specific purposes.

Notes to the Accounts for the year ended 31.12.2024

2) Voluntary Income

| | Unrestricted Fund | | Restricted Fund | Total 2024 | Total 2023 |
|--|-------------------|--------------|-----------------|---------------|---------------|
| | General Fund | Pastoral | Home Mission | | |
| Personal Giving | 11,200 | 1,300 | - | 12,500 | 10,695 |
| Income Tax recovered | 4,031 | - | - | 4,031 | - |
| Personal Giving via Stewardship Services | 14,410 | - | - | 14,410 | 9,040 |
| Grants from trusts and other organisations | - | - | 10,792 | 10,792 | 9,500 |
| Other | 321 | 60 | - | 381 | 350 |
| | 29,962 | 1,360 | 10,792 | 42,114 | 29,585 |

3) Incoming Resources from Charitable Activities

| | Unrestricted Fund | | Restricted Fund | Total 2024 | Total 2023 |
|--------------------------------------|-------------------|----------|-----------------|---------------|---------------|
| | General Fund | Pastoral | Home Mission | | |
| Events - Whole Church | 1,358 | - | - | 1,358 | 2,255 |
| Grants for the provision of services | 10,701 | - | - | 10,701 | 9,916 |
| Preaching & Consultancy fee | 100 | - | - | 100 | 220 |
| Other | - | - | - | - | 80 |
| | 12,159 | - | - | 12,159 | 12,471 |

4) Investment Income

| | Unrestricted Fund | | Restricted Fund | Total 2024 | Total 2023 |
|----------|-------------------|----------|-----------------|------------|------------|
| | General Fund | Pastoral | Home Mission | | |
| Interest | 755 | - | - | 755 | 553 |
| | 755 | - | - | 755 | 553 |

Notes to the Accounts for the year ended 31.12.2024

5) Charitable Activities

| | Unrestricted Fund | | Restricted Fund | Total 2024 | Total 2023 |
|-------------------------------|-------------------|--------------|-----------------|---------------|---------------|
| | General Fund | Pastoral | Home Mission | | |
| Direct Costs | | | | | |
| Ministry | 30,895 | - | 10,792 | 41,687 | 37,775 |
| Grants | 2,664 | - | - | 2,664 | 2,065 |
| Church activities | 1,200 | 1,773 | - | 2,973 | 1,555 |
| Events - whole Church | 1,881 | - | - | 1,881 | 2,574 |
| Events - Social media project | - | - | - | - | 900 |
| Events - Training run by CFS | - | - | - | - | - |
| Other | 332 | - | - | 332 | 225 |
| Support Costs | | | | | |
| Administration | 522 | - | - | 522 | 359 |
| Website / IT | 8 | - | - | 8 | 307 |
| | 37,502 | 1,773 | 10,792 | 50,067 | 45,760 |

6) Trustee Remuneration and benefits

Trustees received a total remuneration of £39,843 inclusive of stipend, Housing allowance and pension contributions. (2023: £37,009).

7) Staff Costs

| | 2024 | 2023 |
|--------------------|--------|--------|
| Wages and salaries | 39,843 | 37,009 |

During the year the Charity employed 1 members of staff, on a full time basis. No employee earned £60,000 p.a. or more.

Notes to the Accounts for the year ended 31.12.2024

8) **Movement of funds**

| | 2024 | | | | |
|---------------------|---------------|---------------|---------------|-----------|---------------|
| | 1/1/24 | Incoming | Out goings | Transfers | 12/31/24 |
| Unrestricted | | | | | |
| General Fund | 18,084 | 42,875 | 37,502 | - | 23,457 |
| Designated | | | | | |
| Pastoral | 250 | 1,360 | 1,773 | - | (163) |
| Restricted | | | | | |
| Home Mission | - | 10,792 | 10,792 | - | - |
| | 18,334 | 55,027 | 50,067 | - | 23,295 |

2024/2025 Giftaid tax refund not yet claimed. The giftaid will offset the Designated fund deficit.

CHURCH FROM SCRATCH

England & Wales - Charity number 1147116

Accounts



Those who braved the walk on the 2023 CFS Away Day

CHURCH  SCRATCH

charity registered in England No 1147116
www.churchfromscratch.org

Annual Report and Impact Statement for the year ending 31 December 2023

Table of Contents

| | |
|-------------------------------------|--------------|
| Table of Contents | Page 2 |
| Annual Report and Impact Statement | Page 3 - 9 |
| Independent Examiner Report | Page 10 - 11 |
| Statement of Financial Activity | Page 12 |
| Statement of Assets and Liabilities | Page 13 |
| Notes to the Accounts | Page 14 - 17 |



Annual Report and Impact Statement for the year ending 31 December 2023

Charitable status

Church from Scratch is a registered charity in England, No. 1147116.
Principal address: 34 Cranley Road, Westcliff-on-Sea, Essex, SSO 8AL.

Trustees serving during 2023:

Alex Emery
Mary Blake
Peter Dominey

The charity is established by means of a constitution with trustees appointed by the Partners (members).

Summary of Objects and Activities

Church from Scratch is a Christian church, a member of the Baptist Union of Great Britain and the Eastern Baptist Association.

The principal purpose of the Church is the advancement of the Christian faith according to the ways of Jesus as found in the Bible and which uphold the fundamentals of the Baptist denomination. The Church also advances education and carries out other charitable purposes in the United Kingdom and other parts of the world.

In addition to the reports set out below, our activities include holistic mission, public worship, prayer, Bible study, teaching, baptism, communion, pastoral care and social action, through a community comprising of, and working with many disadvantaged people.

Public Benefit Statement

The charity's trustees continue to have regard for both the charitable objects set out in the governing document and to ensure that the activities of the charity, as described, meet the public benefit test. In so doing, they take account of the Charity Commission's public benefit guidance when planning the charity's programme of activities.

The Trustees of Church from Scratch are confident that the activities of the charity demonstrate strong evidence of public benefit.

Nature of the Church

Church from Scratch is a Jesus centred network of communal groups, projects and initiatives concentrated in south east Essex; responding to local needs and opportunities – an inclusive church family of people who are typically marginalised and disadvantaged. The church acts as a pathfinder in Christian mission and as a change-agent.

A network of community groups in south east Essex

At the heart of CFS is the community groups. These are often home-based and typically organise around a weekly meeting where we work out what it means to live as followers of Jesus. The communities can be found in south east Essex. They provide opportunities for discipleship and transformation as people develop relationships of trust together over shared meals and through shared lives. Many marginalised and disadvantaged people are part of the groups, and British Sign Language is used in one to include the deaf.



Group work at a CFS gathering

Each community is guided by one or more facilitators who are coached, encouraged and supported by the church leadership. Small-group discipleship resources are created by an in-house team of authors to resource the meetings.

During 2023, people belonging to CFS have grown in faith and new people have joined as we share life and faith together, supporting each other with practical care for those among us facing serious mental and physical illness and difficult domestic situations.

The 4 foundational values of CFS

These values have stood the test of time over the years and sustained us as we find continuing and new ways to express and live them out. They hold us to the ways of Jesus and are at the centre of all that CFS is and aspires to be:

We value Jesus at the Centre: doing it his way; changing as we follow him deeper; relying on him; recognising we're a little bit of his worldwide church; realising Jesus' Spirit is at work now.

We value Building Community: building real and loving relationships as we rely on each other; growing up in faith together; giving our community away to others.

We value All people: moving wider to all; encouraging participation by all; standing up with those who need us.

We value Living life to the full: finding Jesus in all parts of life; holding on to faith as we take risks; helping each other to grow into the full and unique people God wants.

Activities, events and programmes in 2023

We continued to follow these four priorities

We sensed these were needed to unlock our future and help us live out the values on which CFS is founded. The priorities were:

- 1. Fostering passionate spirituality**
re-founding CFS on Jesus in a closer relationship with him.
- 2. Building deeper connections**
helping us to belong to each other across the groups of CFS.
- 3. Reaching new people**
with a focus on re-building opportunities for families, young adults and children.
- 4. Increasing capacity***
finding the people, time & money we need to help CFS sustainably grow and deepen.

** CFS is a church with exceptionally poor people compared to typical churches, but we are strong on love, community, faith and life. We're deeply grateful to Christians from other local churches who give generously to CFS, wishing to support our distinctive mission.*

During the year

Supporting the Shared Space volunteer community

We facilitated meetings and holidays for the 100 Shared Space volunteers.

Table Talks - Theological Reflection Meals

We held theological reflections over zoom and in person to develop people's ability to think as Christians and teach theological reflection skill to participants.



Volunteers in one of the Shared Space shops

Activities throughout the year

This has been a difficult year for Church From Scratch with our minister having limited capacity due to a close member of his family being extremely unwell since a year ago last May and the knock-on effects of this. As a church we have walked closely with them in this, and it has been good to see others in the church taking on additional responsibilities to share the load and our ministers capacity starting to return.

Monthly Gatherings - For people from across the church and Shared Space in various venues, with musical worship, exploring themes and discerning what Jesus has for us.

January

Church Questionnaire to consult all in the church and be more responsive to opportunities and need.

Partners Promise meeting where people commit to being 'Partners' for the year ahead, living out the values of CFS together.

February

Church Away Day which included asylum seekers. A time of sharing Jesus and growing.



Church Away Day in South Woodham Ferrers

March

Monthly gathering to follow Jesus.

April

During Easter week we held Passover meals to help us understand Jesus better, and events based on Holy Saturday, Easter Sunday was a celebration.

May

A monthly gathering

British Sign Language sessions with the help of a deaf member of the church to help the public and people in CFS better include and communicate with deaf people.

June

Church camping and discipleship weekend at Ivy Farm on Mersea Island with four teaching sessions - many coming would otherwise not have had a holiday during the year.

Table Talk – a theological reflection on the place of doubt and faith called, 'Faithful Doubting'.

July

Worship BBQ – with guest speaker on making good decisions.
Summer Camp on Mersea Island



Summer Camp

August Bless Week

Be Blessed - looking at the Beatitudes

Bless Jesus - a time of worship, prayer and communion

Bless people - cream tea, trip to London for refugees, etc.

September

Church Discipleship camping weekend in Forge Wood, Sussex for CFS and Shared Space.

October

Monthly church gathering with BBQ and worship.

November

Outreach fireworks and fellowship party and prayer event.

Safeguarding training organised by CFS in line with Policies and Procedures

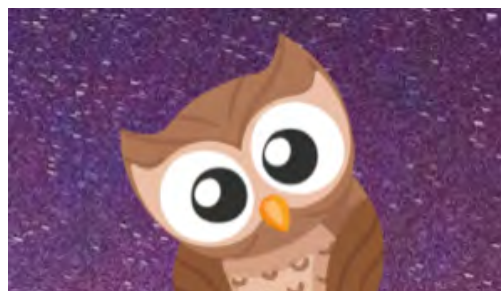
December

Advent Night Owl - weekly online meetings again at 9:30pm providing an hour-long end to the day, in a quiet and reflective space.

An Advent Makers Event - looking forward to God's promises of Christmas through making of things!

Table Talk theological reflection meal on Christian ethics called "Right and wrong".

Christmas party



Night Owl

Resource creation and sharing

In 2023 we created and revised a series of small group resources for use by CFS and to be shared with the wider church along with a number of one-off resources. The series included:

- CFS Values – Partners' Pledge
- Looking out of our tent – Response to CFS Questionnaire
- Jesus in the Psalms
- The Road to Jerusalem
- The Road from Jerusalem
- What is the Bible? – Ways to read the Bible
- Jesus the Misunderstood
- Salt and Light
- Difficult Bible Words
- Advent

International Deployments

We continue to support Dan and Annie Dupree. Dan was our student minister and they now work in Albania with the Roma people among others. We continued to support and encourage them. When they visited us this year they encouraged us by sharing how God is leading them in Albania.



Dan and Annie Dupree

Partnership with Shared Space

Shared Space is the social enterprise CFS founded with which we closely partner. We run a variety of groups, residentials, training and initiatives with Shared Space.

Our minister leads the work of Shared Space, and at the start of the year developed it to include new work with refugees and asylum seekers in Southend with which we are actively partnering.



One of the 100 Shared Space volunteers

CFS Aims for 2024 includes

- **Centre all we do on Jesus, so we become more like him.**
- **To live and express the values of CFS in all we do.**
- Develop and work from the **CFS Development Plan.**
- Equip people of CFS to express and share the **good news of Jesus**, so people in and beyond Southend are transformed.
- **Write and publish** small group courses and videos, to assist CFS and other churches in their mission and discipleship.
- Build upon our partnership with **Shared Space social enterprise**, further replicating the Shared Space model and working with Shared Space in mission, finding new ways to partner with Shared Space around new and existing leaders.
- Develop the **Community Groups** in depth and number so we become more authentic and prevalent.
- Identify, train and nurture CFS people, so **leadership** is shared, and new Community Groups can be formed.
- Encourage greater **generosity** of time and money within and beyond CFS, to release resources for the mission we are called to.
- **Support Baptists and others in pioneering** so other people venture out in incarnational mission.
- **Share our resources and insights** through developments to the CFS website and through training events including Immersive Experiences.
- Be **receptive** to the opportunities and needs as they present, responding with agility so we don't miss the party.
- Support the newly formed anti-slavery and human trafficking charity called **Together Free** through our minister's time, given by CFS to be a trustee.
- Run **residential mission and discipleship events** as capacity allows, including weekends and holidays.

Accounting Basis

The accounts were prepared on a receipts and payments basis.

Reserves Policy

- Reserves will be maintained to ensure core activity can continue during any period of unforeseen difficulty.
- A proportion of reserves will be maintained in a readily realisable form.
- The calculation of the required level of reserves is an integral part of the organisation's planning, budget and forecast cycle and it considers:
 - Risks associated with each stream of income and expenditure being different from that budgeted
 - Planned activity level
 - The church's commitments

On this basis, and having reviewed the policy during the year, the Trustees believe that for 2024 a reserve equivalent to six months' running costs should be maintained. The reserves policy will be reviewed annually.



Mary Blake
Church Secretary on behalf of Church from Scratch
29 January 2024

Independent Examiner's Report

Independent Examiner's Report



**CHARITY COMMISSION
FOR ENGLAND AND WALES**

**Independent examiner's
report on the accounts**

| | | | |
|---|----------------------------------|--------------------------------|---------|
| Report to the trustees/ members of | CHURCH FROM SCRATCH | | |
| On accounts for the year ended | 31 st December 2023 | Charity no (if any) | 1147116 |
| | Set out on pages 12 to 17 | | |

I report to the trustees on my examination of the accounts of the above charity ("the Trust") for the year ended 31/12/2022.

**Responsibilities and
basis of report**

As the charity trustees of the Trust, you are responsible for the preparation of the accounts in accordance with the requirements of the Charities Act 2011 ("the Act").

I report in respect of my examination of the Trust's accounts carried out under section 145 of the 2011 Act and in carrying out my examination, I have followed the applicable Directions given by the Charity Commission under section 145(5)(b) of the Act.

**Independent
examiner's statement**

I have completed my examination. I confirm that no material matters have come to my attention in connection with the examination which gives me cause to believe that in, any material respect:

- accounting records were not kept in accordance with section 130 of the Act or
- the accounts do not accord with the accounting records

I have no concerns and have come across no other matters in connection with the examination to which attention should be drawn in order to enable a proper understanding of the accounts to be reached.

Signed:  **Date:** 04/03/2024

Name: ALAN HOOPER

**Relevant professional
qualification(s) or body
(if any):**

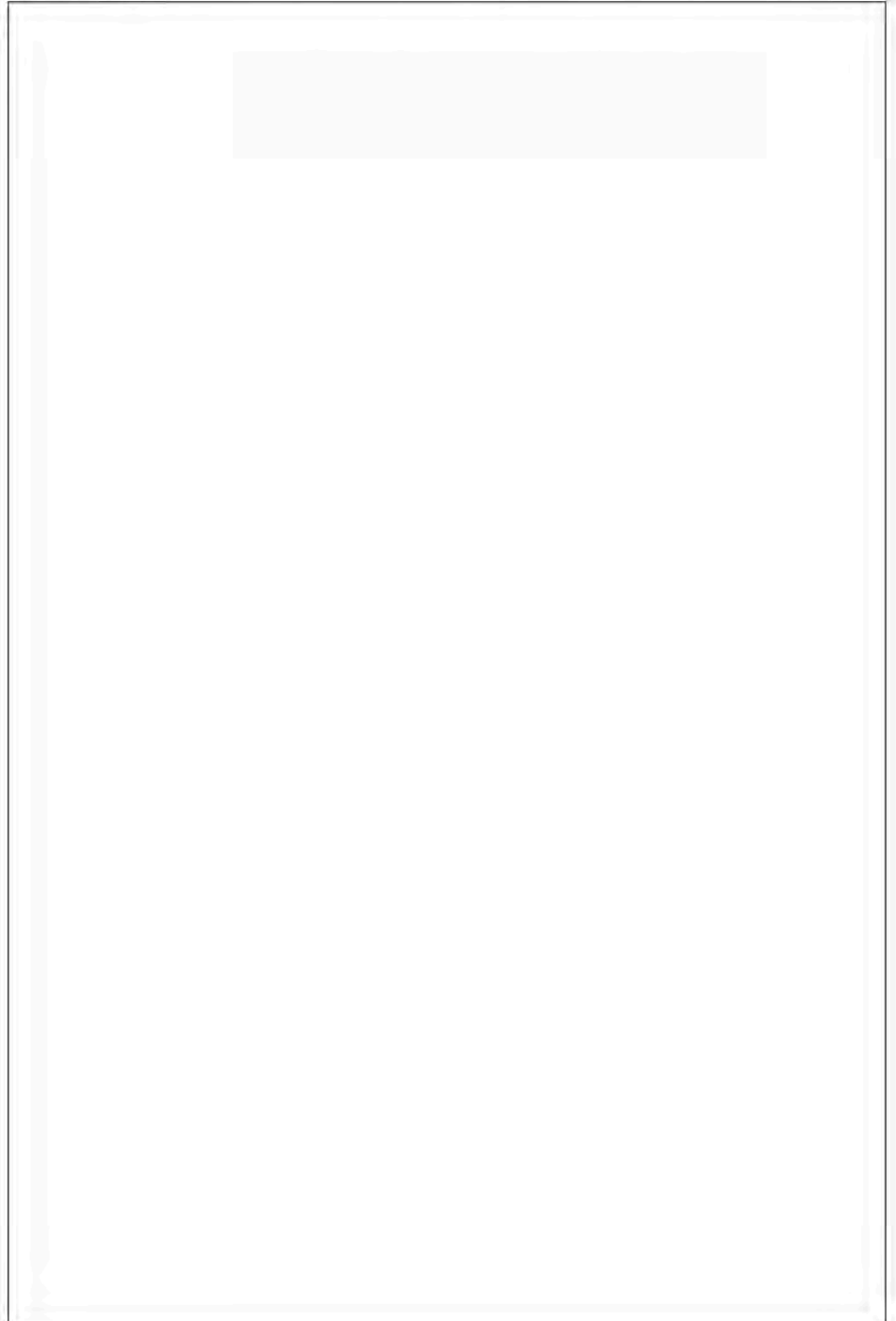
| |
|--|
| |
|--|

Address: 33A WOODLANDS ROAD
HOCKELY
ESSEX SS5 4PL

Independent Examiner's Report continued...

Only complete if the examiner needs to highlight matters of concern (see CC32, Independent examination of charity accounts: directions and guidance for examiners).

Give here brief details of any items that the examiner wishes to disclose.



Statement of Financial Activity for the year ended 31.12.2023

| | Note | Unrestricted Fund £ | Designated Fund £ | Restricted Fund £ | Total 2023 £ | Total 2022 £ |
|---|------|---------------------------|-------------------------|-------------------------|--------------------|--------------------|
| <u>Incoming Resources</u> | | | | | | |
| Incoming resources from generated funds | | | | | | |
| Voluntary Income | 2 | 19,185 | - | 10,400 | 29,585 | 34,593 |
| Investment Income | 4 | 553 | - | - | 553 | 55 |
| Incoming resources from Charitable activities | 3 | 12,471 | - | - | 12,471 | 12,349 |
| Total Incoming Resources | | 32,209 | - | 10,400 | 42,609 | 46,996 |
| <u>Resources Expended</u> | | | | | | |
| Charitable Activities | 5 | 35,360 | - | 10,400 | 45,760 | 53,356 |
| Total Resources Used | | 35,360 | - | 10,400 | 45,760 | 53,356 |
| Net (outgoing)/incoming resources | | (3,151) | - | - | (3,151) | (6,360) |
| Transfer between funds - In | | - | - | - | - | 2,128 |
| Transfer between funds - Out | | - | - | - | - | (2,128) |
| Net movement in funds for year | | (3,151) | - | - | (3,151) | (6,360) |
| Fund Balance at 1 January 2023 | | 21,235 | 250 | - | 21,485 | 27,845 |
| Fund Balance at 31 December 2023 | | 18,084 | 250 | - | 18,334 | 21,485 |

Statement of Assets and Liabilities for the year ended 31.12.2023

CASH FUNDS

CAF Current
CAF Deposit
Paypal
Baptist Deposit - 7 Days Notice
Baptist Deposit - 3 months Notice

| Unrestricted Fund | Designated Fund | Restricted Fund | Total 2023 | Total 2022 |
|-------------------|-----------------|-----------------|---------------|---------------|
| £ | £ | £ | £ | £ |
| 1,097 | 250 | - | 1,347 | 17,843 |
| 4,544 | - | - | 4,544 | 3,617 |
| 24 | - | - | 24 | 24 |
| 1,169 | - | - | 1,169 | - |
| 11,250 | - | - | 11,250 | - |
| 18,084 | 250 | - | 18,334 | 21,485 |

REPRESENTED BY

Unrestricted

General Fund

Designated

Pastoral

Total reserves

| | 2023 | 2022 |
|-----------------------|-----------------|-----------------|
| Unrestricted | 18,084 | 21,235 |
| Designated | 250 | 250 |
| Total reserves | £ 18,334 | £ 21,485 |

Signed: Peter Dominey (trustee) 29th January 2024



Signed: Mary Blake (Church Secretary) 29th January 2024



Notes to the Accounts for the year ended 31.12.2023

1) Accounting Policies

a) **Basis of preparation**

The accounts are prepared in accordance with the Accounting Regulations set out under the Charities Act 2011. The accounts have been changed in 2015 to the Receipts and Payments method.

b) **Donations**

Donations are accounted for gross when received.

c) **Investment Income**

Investment income is included in the accounts the year it is received.

d) **Fund Raising and Publicity Costs**

The Church does not make formal appeals for funds, and expenditure on these items are therefore not material.

e) **Gifts in Kind**

No amounts are included in the financial statements for services donated by volunteers.

f) **Grants payable**

The Church makes grants to other organisations whose charitable objects complement its work.

They are accounted for in the year they are paid.

g) **Taxation**

The charity is exempt from tax on its charitable activities.

h) **Fund Accounting**

Unrestricted funds can be used in accordance with the charitable objectives at the discretion of the trustees.

Restricted funds can only be used for particular restricted purposes within the objects of the charity.

Restrictions arise when specified by the donor or when funds are raised for a specific purposes.

Notes to the Accounts for the year ended 31.12.2023

2) Voluntary Income

| | Unrestricted Fund | Restricted Fund | Total 2023 | Total 2022 |
|--|-------------------|--------------------------------|---------------|---------------|
| | General Fund | Home Mission/ Radical Roots | | |
| Personal Giving | 10,695 | - | 10,695 | 9,665 |
| Income Tax recovered | - | - | - | 3,888 |
| Personal Giving via Stewardship Services | 8,140 | 900 | 9,040 | 13,040 |
| Grants from trusts and other organisations | - | 9,500 | 9,500 | 8,000 |
| Other | 350 | - | 350 | - |
| | 19,185 | 10,400 | 29,585 | 34,593 |

12 months gift aid of £1,690 from 2022/2023 will be claimed in 2024.

3) Incoming Resources from Charitable Activities

| | Unrestricted Fund | Restricted Fund | Total 2023 | Total 2022 |
|--------------------------------------|-------------------|--------------------------------|---------------|---------------|
| | General Fund | Home Mission/ Radical Roots | | |
| Events - Whole Church | 2,255 | - | 2,255 | 1,110 |
| Grants for the provision of services | 9,916 | - | 9,916 | 11,104 |
| Preaching & Consultancy fee | 220 | - | 220 | 75 |
| Other | 80 | - | 80 | 60 |
| | 12,471 | - | 12,471 | 12,349 |

4) Investment Income

| | Unrestricted Fund | Restricted Fund | Total 2023 | Total 2022 |
|----------|-------------------|--------------------------------|------------|------------|
| | General Fund | Home Mission/ Radical Roots | | |
| Interest | 553 | - | 553 | 55 |
| | 553 | - | 553 | 55 |

Notes to the Accounts for the year ended 31.12.2023

5) Charitable Activities

| | Unrestricted Fund | Restricted Fund | Total 2023 | Total 2022 |
|-------------------------------|-------------------|--------------------------------|---------------|---------------|
| | General Fund | Home Mission/ Radical Roots | | |
| Direct Costs | | | | |
| Ministry | 28,275 | 9,500 | 37,775 | 42,663 |
| Grants | 2,065 | - | 2,065 | 2,065 |
| Church activities | 1,555 | - | 1,555 | 805 |
| Events - whole Church | 2,574 | - | 2,574 | 207 |
| Events - Social media project | - | 900 | 900 | 5,272 |
| Events - Training run by CFS | - | - | - | 125 |
| Other | 225 | - | 225 | 1,098 |
| Support Costs | | | | |
| Administration | 359 | - | 359 | 363 |
| Website/IT | 307 | - | 307 | 758 |
| | 35,360 | 10,400 | 45,760 | 53,356 |

6) Trustee Remuneration and benefits

Trustees received a total remuneration of £37,009 inclusive of stipend, Housing allowance and pension contributions. (2022: £35,816).

7) Staff Costs

| | 2023 | 2022 |
|--------------------|--------|--------|
| Wages and salaries | 37,009 | 40,773 |

During the year the Charity employed 1 members of staff, on a full time basis. Natalie Hughes finished her Minister in Training part time role for CFS in June 2022. No employee earned £60,000 p.a. or more.

Notes to the Accounts for the year ended 31.12.2023

8) Movement of funds

| | 2023 | | | | 31/12/2023 |
|---------------------|---------------|---------------|---------------|-----------|---------------|
| | 01/01/2023 | Incoming | Out goings | Transfers | |
| Unrestricted | | | | | |
| General Fund | 21,235 | 32,209 | 35,360 | - | 18,084 |
| Designated | | | | | |
| Pastoral | 250 | - | - | - | 250 |
| Restricted | | | | | |
| Home Mission | - | 9,500 | 9,500 | - | - |
| Radical Roots | - | 900 | 900 | - | - |
| | 21,485 | 42,609 | 45,760 | - | 18,334 |

CHURCH FROM SCRATCH

England & Wales - Charity number 1147116

Accounts



CHURCH  SCRATCH

charity registered in England No 1147116
www.churchfromscratch.org

Annual Report and Impact Statement for the year ending 31 December 2022

Table of Contents

| | |
|-------------------------------------|--------------|
| Table of Contents | Page 2 |
| Annual Report and Impact Statement | Page 3 - 10 |
| Independent Examiner Report | Page 11 - 12 |
| Statement of Financial Activity | Page 13 |
| Statement of Assets and Liabilities | Page 14 |
| Notes to the Accounts | Page 15 - 18 |



Annual Report and Impact Statement for the year ending 31 December 2022

Charitable status

Church from Scratch is a registered charity in England, No. 1147116.
Principal address: 34 Cranley Road, Westcliff-on-Sea, Essex, SS0 8AL.

Trustees serving on 31 January 2022:

Alex Emery
Mary Blake
Natalie Hughes (retired 18 June 2022)
Peter Dominey

The charity is established by means of a constitution with trustees appointed by the Partners (members).

Summary of Objects and Activities

Church from Scratch is a Christian church, a member of the Baptist Union of Great Britain and the Eastern Baptist Association.

The principal purpose of the Church is the advancement of the Christian faith according to the ways of Jesus as found in the Bible and which uphold the fundamentals of the Baptist denomination. The Church also advances education and carries out other charitable purposes in the United Kingdom and other parts of the world.

In addition to the reports set out below, our activities include holistic mission, public worship, prayer, Bible study, teaching, baptism, communion, pastoral care and social action, through a community comprising of, and working with many disadvantaged people.

Public Benefit Statement

The charity's trustees continue to have regard for both the charitable objects set out in the governing document and to ensure that the activities of the charity, as described, meet the public benefit test. In so doing, they take account of the Charity Commission's public benefit guidance when planning the charity's programme of activities.

The Trustees of Church from Scratch are confident that the activities of the charity demonstrate strong evidence of public benefit.

Nature of the Church

Church from Scratch is a Jesus centred network of communal groups, projects and initiatives concentrated in south east Essex; responding to local needs and opportunities – an inclusive church family of people who are typically marginalised and disadvantaged. The church acts as a pathfinder in Christian mission and as a change-agent.

A network of community groups across south east Essex

At the heart of CFS is the network of community groups. These are often home-based and typically organise around a weekly meeting where people work out what it means to live as followers of Jesus. The six communities are located across south east Essex, from Pitsea to Shoeburyness. They provide opportunities for discipleship and transformation as people develop relationships of trust with each other together over shared meals and through shared lives. Many marginalised and disadvantaged people are part of the groups, and British Sign Language is used in one to include the deaf.



Each community is guided by one or more facilitators who are coached, encouraged and supported by the church leadership. Small-group discipleship resources are created by an in-house team of authors to resource the meetings.

During 2022, people belonging to CFS have grown in faith and new people have joined as we share life and faith together, supporting each other with practical care for those among us facing serious mental and physical illness and difficult domestic situations.

The 4 foundational values of CFS

These values have stood the test of time over the years and sustained us as we find continuing and new ways to express and live them out. They hold us to the ways of God's Kingdom and are at the centre of all that CFS is and aspires to be:

We value Jesus at the Centre: doing it his way; changing as we follow him deeper; relying on him; recognising we're a little bit of his worldwide church; realising Jesus' Spirit is at work now.

We value Building Community: building real and loving relationships as we rely on each other; growing up in faith together; giving our community away to others.

We value All people: moving wider to all; encouraging participation by all; standing up with those who need us.

We value Living life to the full: finding Jesus in all parts of life; holding on to faith as we take risks; helping each other to grow into the full and unique people God wants.

Activities, events and programmes in 2022

We continued to follow these four priorities

We sensed these were needed to unlock our future and help us live out the values on which CFS is founded. The priorities were:

- 1. Fostering passionate spirituality**
re-founding CFS on Jesus in a closer relationship with him.
- 2. Building deeper connections**
helping us to belong to each other across the groups of CFS.
- 3. Reaching new people**
with a focus on re-building opportunities for families, young adults and children.
- 4. Increasing capacity***
finding the people, time & money we need to help CFS sustainably grow and deepen.

** CFS is a church with exceptionally poor people compared to other churches, but we are strong on love, community, faith and life. We're deeply grateful to Christians from other local churches who give generously to CFS, wishing to support our distinctive mission.*

During the year

Night Owl

These weekly meetings on Fridays at 10:30pm provided an hour-long end to the day and week, providing a quiet and reflective space. We ran these in the first part of the year.



Supporting the Shared Space volunteer community

We helped facilitate weekly meetings for the 85 Shared Space volunteers.

Talking God - Theological Reflections

We held theological reflections over zoom to develop people's ability to think as Christians and teach theological reflection skill to an invited group of participants.

Activities throughout the year

This has been a difficult year for Church From Scratch with our minister having severely limited capacity due to a close member of his family being extremely unwell since May and the knock-on effects of this. As a church we have walked closely with them in this, and it has been good to see others in the church taking on additional responsibilities to share the load.

Monthly Gatherings - For people from across the church in various venues, with musical worship, exploring themes and discerning what Jesus has for us.

January

We started our series named 'Rocket Man' which compared the ups and downs of the life of Elton John with our own journey through life with the help of Jesus.

February

Immersive Experience – our immersive training experience continued for church leaders and ministers from Baptist churches across the country with another 5 Baptist leaders attending our latest residentials. Over 100 church ministers and leaders have completed this intensive 4-day training programme.

Medway Residential - A large group from the church took over the Medway Youth Hostel in Kent for a weekend of teaching. We shared fellowship and special times together with God, encouraging each other as we thought about our walk with Jesus on the Emmaus road.



March

We baptised Nathan as many joined him in the pool and we all rejoiced as he shared his testimony of freedom.

April

During Easter week we held Passover meals in various homes to help all understand Jesus better.

Easter Sunday was a time of celebration as the church gathered together for praise, fellowship and breakfast.



May

Radical Roots: We developed a new video training course to help Baptist churches reconnect with the historical founding stories of our movement. We filmed a 5-part costume drama to be called Radical Roots. This series, written in-house, tells stories of historical Baptist figures through the centuries, and helps people explore the radical roots from where modern-day Baptists churches have come.

To make Radical Roots possible we secured funding for Radical Roots from a private Christian trust, Baptist Together, Baptist Historical Society, Northern Baptist College, Spurgeon's College, and nine Baptist Associations including our own Eastern Baptist Association.



The films were edited through 2022 for release in 2023 with accompanying small group materials.

We are committed to actively sharing these resources with other churches and church plants. A hallmark of the resources is their highly participatory and interactive approaches that cater for a range of learning styles and their fresh take.



June

Natalie Hughes was our Minister in Training for the past two years. During this time, she developed our prayer life, created new church events, wrote resources, and was the CFS chaplain for the 85 Shared Space volunteers (Shared Space is the Christian social enterprise we started and partner with). In June we sent Nat out to become minister of a Baptist church in Nottingham. This is the third Minister in Training we have had the privilege to train.



July

This year the church was unable to enjoy the usual camping and discipleship weekend at Mersea Island due to our minister and family not being able to head up this event due to ill health. The church continued to support each other at this difficult time.

August

With such good weather we were able to share another special time of sharing at our monthly gatherings, followed by a BBQ.

September

During this month CFS delivered Safeguarding training inline with our policies and procedures.

October

We made changes to our Community Groups so we could welcome more people into our existing groups.

We spent the best part of two months with the theme of “And Breathe” across the church. With individual weeks including: Breathe and remember, Breathe and be still. Each week included a prayer practice for each person to use through the week.



November

We started building towards a series with creation and use of a new series of Advent resources with each week based on a Christmas carol.



December

We gathered to celebrate, worship and reflect again on the wonderful gift we have been given in Jesus, through Christmas resources written for the groups, a Christingle Service and a Christmas day event. People across the church welcomed others into their homes for Christmas who would have been isolated.



Resource creation and sharing

In 2022 we created 6 small group series of resources for use by CFS and to be shared with the wider church along with a number of one-off resources. The 6 series were:

- Rocket Man
- Easter Reflections
- Post Resurrection Stories
- Old Testament Characters
- And Breathe
- Advent



International Deployments

We continue to support Dan and Annie Dupree. Dan was our student minister until 7 years ago and they now work in Albania with the Roma people among others. We continued to support and encourage them.



Partnership with Shared Space

Shared Space is the social enterprise CFS founded with which we closely partner:

- Our student minister acted as chaplain to the two stores and their volunteers.
- We run 'Making Space' groups.
- Our minister leads the work of Shared Space, and at the end of the year developed it to include new outreach to refugees and asylum seekers in Southend and we are actively partnering in that.

CFS Aims for 2023 includes

- **Centre all we do on Jesus, so we become more like him.**
- **To live and express the values of CFS in all we do.**
- Develop and work from the **CFS Development Plan.**
- Equip people of CFS to express and share the **good news of Jesus**, so people in and beyond Southend are transformed.
- **Write and publish** small group courses and videos, to assist CFS and other churches in their mission and discipleship, including by publishing the Radical Roots series
- Build upon our partnership with **Shared Space social enterprise**, further replicating the Shared Space model and working with Shared Space in mission.
- Develop the **Community Groups** in depth and number so we become more authentic and prevalent.
- Identify, train and nurture CFS people, so **leadership** is shared, and new Community Groups can be formed.
- Encourage greater **generosity** of time and money within and beyond CFS, to release resources for the mission we are called to.
- **Support Baptists and others in pioneering** so other people venture out in incarnational mission.
- **Share our resources and insights** through developments to the CFS website and through training events including Immersive Experiences.
- Be **receptive** to the opportunities and needs as they present, responding with agility so we don't miss the party.
- Support the newly formed anti-slavery and human trafficking charity called **Together Free** through our minister's time, given by CFS to be a trustee.
- Run **residential mission and discipleship events** as capacity allows, including weekends and holidays.

Accounting Basis

The accounts were prepared on a receipts and payments basis.

Reserves Policy

- Reserves will be maintained to ensure core activity can continue during any period of unforeseen difficulty.
- A proportion of reserves will be maintained in a readily realisable form.
- The calculation of the required level of reserves is an integral part of the organisation's planning, budget and forecast cycle and it considers:
 - Risks associated with each stream of income and expenditure being different from that budgeted
 - Planned activity level
 - The church's commitments

On this basis, and having reviewed the policy during the year, the Trustees believe that for 2023 a reserve equivalent to six months' running costs should be maintained. The reserves policy will be reviewed annually.



Mary Blake
Church Secretary on behalf of Church from Scratch
30 January 2023

Independent Examiner's Report



**CHARITY COMMISSION
FOR ENGLAND AND WALES**

**Independent examiner's
report on the accounts**

Section A Independent Examiner's Report

| | | | |
|---|--------------------------------|--------------------------------|---------|
| Report to the trustees/ members of | CHURCH FROM SCRATCH | | |
| On accounts for the year ended | 31 st December 2022 | Charity no (if any) | 1147116 |
| Set out on pages | 1 - 18 | | |

I report to the trustees on my examination of the accounts of the above charity ("the Trust") for the year ended 31/12/2022.

Responsibilities and basis of report As the charity trustees of the Trust, you are responsible for the preparation of the accounts in accordance with the requirements of the Charities Act 2011 ("the Act").

I report in respect of my examination of the Trust's accounts carried out under section 145 of the 2011 Act and in carrying out my examination, I have followed the applicable Directions given by the Charity Commission under section 145(5)(b) of the Act.

**Independent
examiner's statement**

I have completed my examination. I confirm that no material matters have come to my attention in connection with the examination which gives me cause to believe that in, any material respect:

- accounting records were not kept in accordance with section 130 of the Act or
- the accounts do not accord with the accounting records

I have no concerns and have come across no other matters in connection with the examination to which attention should be drawn in order to enable a proper understanding of the accounts to be reached.

Signed:  **Date:** 27 MARCH 2023

Name: ALAN HOOPER

Relevant professional qualification(s) or body (if any):

Address: 33A WOODLANDS ROAD
HOCKELY
ESSEX SS5 4PL

Section B Disclosure

Only complete if the examiner needs to highlight matters of concern (see CC32, Independent examination of charity accounts: directions and guidance for examiners).

Independent Examiner's Report continued...

**Left blank as the examiner
has raised no matters of concern**

Statement of Financial Activity for the year ended 31.12.2022

| | Note | Unrestricted Fund £ | Designated Fund £ | Restricted Fund £ | Total 2022 £ | Total 2021 £ |
|---|------|---------------------------|-------------------------|-------------------------|--------------------|--------------------|
| <u>Incoming Resources</u> | | | | | | |
| Incoming resources from generated funds | | | | | | |
| Voluntary Income | 2 | 23,546 | 3,046 | 8,000 | 34,593 | 56,911 |
| Investment Income | 4 | 55 | - | - | 55 | 2 |
| Incoming resources from Charitable activities | 3 | 12,349 | - | - | 12,349 | 14,160 |
| Total Incoming Resources | | 35,950 | 3,046 | 8,000 | 46,996 | 71,073 |
| <u>Resources Expended</u> | | | | | | |
| Charitable Activities | 5 | 32,721 | 6,279 | 14,356 | 53,356 | 64,480 |
| Total Resources Used | | 32,721 | 6,279 | 14,356 | 53,356 | 64,480 |
| Net (outgoing)/incoming resources | | 3,229 | (3,232) | (6,356) | (6,360) | 6,593 |
| Transfer between funds - In | | 282 | 250 | 1,595 | 2,128 | 1 |
| Transfer between funds - Out | | (1,845) | (128) | (154) | (2,128) | (1) |
| Net movement in funds for year | | 1,665 | (3,110) | (4,915) | (6,360) | 6,593 |
| Fund Balance at 1 January 2022 | | 19,570 | 3,360 | 4,915 | 27,845 | 21,251 |
| Fund Balance at 31 December 2022 | | 21,235 | 250 | 0 | 21,485 | 27,845 |

Statement of Assets and Liabilities for the year ended 31.12.2022

| | Unrestricted Fund | Designated Fund | Restricted Fund | Total 2022 | Total 2021 |
|-------------------|----------------------|--------------------|--------------------|---------------|---------------|
| | £ | £ | £ | £ | £ |
| CASH FUNDS | | | | | |
| CAF Current | 17,593 | 250 | - | 17,843 | 13,252 |
| CAF Deposit | 3,617 | - | - | 3,617 | 14,569 |
| Paypal | 24 | - | - | 24 | 24 |
| | <u>21,235</u> | <u>250</u> | <u>-</u> | <u>21,485</u> | <u>27,845</u> |

| REPRESENTED BY | 2022 | 2021 |
|-----------------------|-----------------|-----------------|
| Unrestricted | | |
| General Fund | 21,235 | 19,570 |
| | <u>21,235</u> | <u>19,570</u> |
| Designated | | |
| Pastoral | 250 | |
| Chaplaincy | - | 3,360 |
| | <u>250</u> | <u>3,360</u> |
| Restricted | | |
| Radical Roots | - | 4,748 |
| Embrace Project | - | 167 |
| | <u>-</u> | <u>4,915</u> |
| Total reserves | <u>£ 21,485</u> | <u>£ 27,845</u> |

Signed: Peter Dominey (trustee) 27th March 2023



Signed: Mary Blake (Church Secretary) 27th March 2023



Notes to the Accounts for the year ended 31.12.2022

1) Accounting Policies

a) **Basis of preparation**

The accounts are prepared in accordance with the Accounting Regulations set out under the Charities Act 2011. The accounts have been changed in 2015 to the Receipts and Payments method.

b) **Donations**

Donations are accounted for gross when received.

c) **Investment Income**

Investment income is included in the accounts the year it is received.

d) **Fund Raising and Publicity Costs**

The Church does not make formal appeals for funds, and expenditure on these items are therefore not material.

e) **Gifts in Kind**

No amounts are included in the financial statements for services donated by volunteers.

f) **Grants payable**

The Church makes grants to other organisations whose charitable objects complement its work. They are accounted for in the year they are paid.

g) **Taxation**

The charity is exempt from tax on its charitable activities.

h) **Fund Accounting**

Unrestricted funds can be used in accordance with the charitable objectives at the discretion of the trustees. Restricted funds can only be used for particular restricted purposes within the objects of the charity. Restrictions arise when specified by the donor or when funds are raised for a specific purposes.

Notes to the Accounts for the year ended 31.12.2022

2) Voluntary Income

| | Unrestricted Fund | | Restricted Fund | Total 2022 | Total 2021 |
|--|-------------------|------------|--|------------|------------|
| | General Fund | Chaplaincy | Home Mission/ Radical Roots/ Embrace | | |
| Personal Giving | 8,635 | 1,030 | - | 9,665 | 15,620 |
| Income Tax recovered | 2,171 | 1,716 | - | 3,888 | 1,621 |
| Personal Giving via Stewardship Services | 12,740 | 300 | - | 13,040 | 14,620 |
| Donations - Organisations | - | - | - | - | 9,000 |
| Grants from trusts and other organisations | - | - | 8,000 | 8,000 | 15,364 |
| Other | - | - | - | - | 686 |
| | 23,546 | 3,046 | 8,000 | 34,593 | 56,911 |

3) Incoming Resources from Charitable Activities

| | Unrestricted Fund | | Restricted Fund | Total 2022 | Total 2021 |
|--------------------------------------|-------------------|------------|--|------------|------------|
| | General Fund | Chaplaincy | Home Mission/ Radical Roots/ Embrace | | |
| Events - Whole Church | 1,110 | - | - | 1,110 | 1,745 |
| Events - Other | - | - | - | - | - |
| Grants for the provision of services | 11,104 | - | - | 11,104 | 11,170 |
| Preaching & Consultancy fee | 75 | - | - | 75 | 75 |
| Training run by CFS | - | - | - | - | 750 |
| Other | 60 | - | - | 60 | 420 |
| | 12,349 | - | - | 12,349 | 14,160 |

4) Investment Income

| | Unrestricted Fund | | Restricted Fund | Total 2022 | Total 2021 |
|----------|-------------------|------------|--|------------|------------|
| | General Fund | Chaplaincy | Home Mission/ Radical Roots/ Embrace | | |
| Interest | 55 | - | - | 55 | 2 |
| | 55 | - | - | 55 | 2 |

Notes to the Accounts for the year ended 31.12.2022

5) Charitable Activities

| | Unrestricted Fund | | Restricted Fund | Total 2022 | Total 2021 |
|-------------------------------|-------------------|--------------|--|---------------|---------------|
| | General Fund | Chaplaincy | Home Mission/ Radical Roots/ Embrace | | |
| Direct Costs | | | | | |
| Ministry | 28,385 | 6,279 | 8,000 | 42,663 | 50,302 |
| Grants | 2,065 | - | - | 2,065 | 6,935 |
| Church activities | 805 | - | - | 805 | 471 |
| Events - whole Church | 207 | - | - | 207 | 3,531 |
| Events - Social media project | - | - | 5,272 | 5,272 | - |
| Events - Training run by CFS | 112 | - | 13 | 125 | 929 |
| Other | 298 | - | 800 | 1,098 | 1,116 |
| Support Costs | | | | | |
| Administration | 363 | - | - | 363 | 580 |
| Website / IT | 487 | - | 271 | 758 | 616 |
| | 32,721 | 6,279 | 14,356 | 53,356 | 64,480 |

6) Trustee Remuneration and benefits

Trustees received a total remuneration of £35,816 inclusive of stipend, Housing allowance and pension contributions. (2021: £36,321).

7) Staff Costs

| | 2022 | 2021 |
|--------------------|--------|--------|
| Wages and salaries | 40,773 | 46,836 |

During the year the Charity employed 1 members of staff, on a full time basis. Natalie Hughes finished her Minister in Training part time role for CFS in June 2022. No employee earned £60,000 p.a. or more.

Notes to the Accounts for the year ended 31.12.2022

8) Movement of funds

| | 2022 | | | | 31/12/2022 |
|---------------------|---------------|---------------|---------------|-----------|---------------|
| | 31/12/2021 | Incoming | Out goings | Transfers | |
| Unrestricted | | | | | |
| General Fund | 19,570 | 35,950 | 32,721 | (1,563) | 21,235 |
| Designated | | | | | |
| Pastoral | - | - | - | 250 | 250 |
| Chaplaincy | 3,360 | 3,046 | 6,279 | (128) | - |
| Restricted | | | | | |
| Home Mission | - | 8,000 | 8,000 | - | - |
| Embrace Project | 167 | - | 13 | (154) | - |
| Radical Roots | 4,748 | - | 6,343 | 1,595 | - |
| | 27,845 | 46,996 | 53,356 | - | 21,485 |

CHURCH FROM SCRATCH

England & Wales - Charity number 1147116

Accounts



CHURCH  SCRATCH

charity registered in England No 1147116
www.churchfromscratch.org

Annual Report and Impact Statement for the year ending 31 December 2021

Table of Contents

| | |
|-------------------------------------|--------------|
| Table of Contents | Page 2 |
| Annual Report and Impact Statement | Page 3 - 11 |
| Independent Examiner Report | Page 12 - 13 |
| Statement of Financial Activity | Page 14 |
| Statement of Assets and Liabilities | Page 15 |
| Notes to the Accounts | Page 16 - 19 |



Annual Report and Impact Statement for the year ending 31 December 2021

Charitable status

Church from Scratch is a registered charity in England, No. 1147116.
Principal address: 34 Cranley Road, Westcliff-on-Sea, Essex, SS0 8AL.

Trustees serving at 31 January 2021:

| | |
|----------------|---------------------|
| Mary Blake | Ongoing |
| Peter Dominey | Ongoing |
| Katy Parsons | Retired 24.2.2021 |
| Natalie Hughes | Ongoing |
| Alex Emery | Appointed 24.2.2021 |

The charity is established by means of a constitution with trustees appointed by the Partners (members).

Summary of Objects and Activities

Church from Scratch is a Christian church, a member of the Baptist Union of Great Britain and the Eastern Baptist Association.

The principal purpose of the Church is the advancement of the Christian faith according to the ways of Jesus as found in the Bible and which uphold the fundamentals of the Baptist denomination. The Church also advances education and carries out other charitable purposes in the United Kingdom and other parts of the world.

In addition to the reports set out below, our activities include holistic mission, public worship, prayer, Bible study, teaching, baptism, communion, pastoral care and social action, through a community comprising of, and working with many disadvantaged people.

Public Benefit Statement

The charity's trustees continue to have regard for both the charitable objects set out in the governing document and to ensure that the activities of the charity, as described, meet the public benefit test. In so doing, they take account of the Charity Commission's public benefit guidance when planning the charity's programme of activities.

The Trustees of Church from Scratch are confident that the activities of the charity demonstrate strong evidence of public benefit.

Nature of the Church

Church from Scratch is a Jesus centred network of community groups, projects and initiatives concentrated in south east Essex; responding to local needs and opportunities – an inclusive church family of people who are often marginalised and disadvantaged. The church acts as a pathfinder in Christian mission and as a change-agent.

A network of community groups across south east Essex

At the heart of CFS is the network of community groups. These are often home-based and typically organise around a weekly meeting where people work out what it means to live as followers of Jesus. The six communities are located across south east Essex, from Pitsea to Shoeburyness. They provide opportunities for discipleship and transformation as people develop relationships of trust with each other over shared meals and through shared lives. Many marginalised and disadvantaged people are part of the groups, and British Sign Language is used in one to include the deaf. Two groups hold a weekly gathering in Shared Space stores (Shared Space is the social enterprise which CFS founded and now partners with).

Each community is guided by one or more facilitators who are coached, encouraged and supported by the church leadership. Small-group discipleship resources are created by an in-house team of authors to resource the meetings.

During 2021, people belonging to CFS have grown in faith and new people have joined as we share life and faith together, supporting each other with practical care for those among us facing serious mental and physical illness and difficult domestic situations.



The 4 foundational values of CFS

These values have stood the test of time over the years and sustained us as we find continuing and new ways to express and live them out. They hold us to the ways of God's Kingdom and are at the centre of all that CFS is and aspires to be:

We value Jesus at the Centre: doing it his way; changing as we follow him deeper; relying on him; recognising we're a little bit of his worldwide church; realising Jesus' Spirit is at work now.

We value Building Community: building real and loving relationships as we rely on each other; growing up in faith together; giving our community away to others.

We value All people: moving wider to all; encouraging participation by all; standing up with those who need us.

We value Living life to the full: finding Jesus in all parts of life; holding on to faith as we take risks; helping each other to grow into the full and unique people God wants.

Activities, events and programmes in 2021

We continued to follow these four priorities

We sensed these were needed to unlock our future and help us live out the values on which CFS is founded. The priorities were:

1. **Fostering passionate spirituality**
re-founding CFS on Jesus in a closer relationship with him.
2. **Building deeper connections**
helping us to belong to each other across the groups of CFS.
3. **Reaching new people**
with a focus on re-building opportunities for families, young adults and children.
4. **Increasing capacity***
finding the people, time & money we need to help CFS sustainably grow and deepen.

** CFS is a church with poorer people than other churches in the area but we are strong on love, community, faith and life. We're deeply grateful to Christians from other local churches who give generously to CFS, wishing to support our distinctive mission.*

Covid-19 and a new lockdown

After an easing of restrictions in mid 2020, the beginning of 2021 brought the return of lockdown and the church adapted as physical meetings were not possible. The following were features of Church from Scratch's lockdown:

Food for those among us who were hungry

We provided a food programme to people in CFS, Shared Space and the wider community who were going hungry, and we mobilised three other Baptist churches to join us in this and applied to Southend Emergency Fund for financial assistance in this.

Weekend Workshops

A series of on-line Weekend Workshops were held which was a fun way to connect and also meet other people on-line. Themes included learning British Sign Language, a cooking lesson (bring your own ingredients and cook along), etc.



Online weekly Community Groups

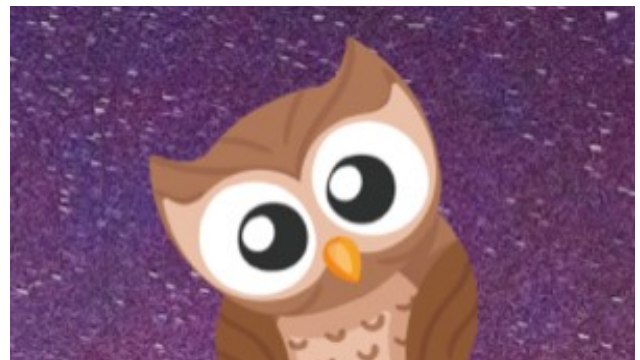
These groups were our best attempt at a continuation of our face-to-face meetings and helped us stay connected using tools such as Zoom - it was evident that though helpful, online meetings are limited in what can be achieved, when the aim is to share life together and we normally meet in each other's homes"

CFS Daily

A 30 minute online gathering every weekday of lockdown, held in the early evenings to spend time with God and each other. Each day was facilitated by a different person and was multi-voiced, helping us sustain a rhythm of prayer and to stay connected with God and each other - especially for those on their own during lockdown.

Night Owl

These weekly meetings on Fridays at 10:30pm provided an hour-long end to the day and week, providing a quiet and reflective space. And they have endured beyond lockdown as part of the online presence of CFS.



Supporting the Shared Space volunteer community

We helped facilitate weekly meetings for the 70 Shared Space volunteers during lockdown as we were not able to run Making Space groups in each of the stores during the restrictions.

Talking God - Theological Reflections

We held theological reflections over zoom to develop people's ability to think as Christians and teach theological reflection skill to an invited group of participants.

Crucible Course

Five of CFS undertook an online module on discipleship processes, called Becoming Human which was provided by Crucible Course.



Restrictions Eased

With Covid restrictions easing we could meet again the week before Easter. This included:

- **Baptisms**

It was wonderful to baptise Laura, Ash and Marie during the year with baptisms in a church baptistry we borrowed and in the Thames Estuary.



- **Kick Start** - a 4 session course we created, for Shared Space volunteers to learn to cook a dish each week and discuss a theme. These were held outdoors due to Covid.

- **Safe Place for our Stories** - a safe space for women and non-binary people to share their experiences of violence and harassment. This included 'Rage Around The Fire'. A gathering around a fire.



- **Denial Round The Fire** - we met in gardens around fire pits and reflected on Peter's denial of Jesus whilst warming himself round the fire after Jesus was arrested.

- **Bless Week** - we held this 3-day event:

- Day 1: Be Blessed - Waiting for God's blessing
- Day 2: Bless Others - Baking Bread together to share
- Day 3: Bless Jesus - A time of worship together.



- **Ivy Farm Summer Camp** 30 of us went on a camping holiday to Mersea Island, where we explored the stories Jesus told of the lost coin, sheep and sons in Luke's Gospel.



- **Forge Wood** - 14 of us went wood camping in Sussex, cooking over log fires, sleeping in expedition tents and gathering around the fire to connect with Christ. For some of us this was the first holiday in many years.

- **Immersive Experience** - our immersive training experience returned for church leaders and ministers from



Baptist churches across the country. 100+ church leaders have completed this 4-day programme with us.

- **Monthly Gatherings** - For people from across the church in various venues, with worship, exploring themes and discerning what Jesus has for us.

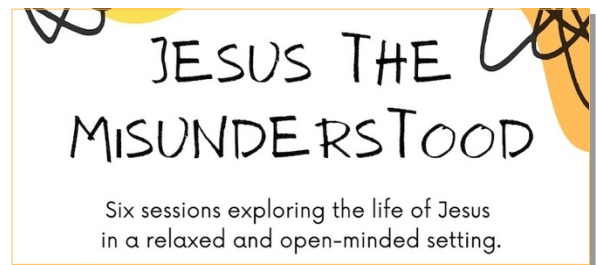
Resource creation and sharing

In 2021 we wrote and published online a range of small group resources including the following series:

- **Jesus Is The Question**
A 7 week course to help us engage with questions which Jesus asked.
- **Jesus The Misunderstood**
A 7-week foundational course on Jesus. This is an early attempt at a new enquirers course to express the Christian faith, that helps people to see God as non-violent and is shaped by anabaptist and other distinctives.
- **People Who Pray**
A series to help our spirituality.
- **Christmas From Scratch**
10 monologue videos and small group resources which we made the year before - this year we re-edited the videos for social media and made them available for download by other churches from the UK and abroad.
- **Colossians**
A short series based on this book from the Bible
- **Radical Roots**
We started to develop a new video training course to help Baptist churches reconnect with the historical founding stories of our movement.

To aid production we secured funding from the Baptist Historical Society (who have become our partner), Baptist Union of GB, 8 Baptist Associations and 2 Baptist Colleges.

This docudrama script is now written and in 2022 we will film and publish the course.



We are committed to actively sharing these resources with other churches and church plants. A hallmark of the resources is their highly participatory and interactive approaches that cater for a range of learning styles and their fresh take. We also re-edited some of our old series of small group's resources to the new standard for their ongoing use.

Other things

CFS and the LGBTQIA+ Community

We are blessed to continue to welcome people from this community, to be invigorated by their participation, and to provide a safe home for them.

During the year we published further resources to help churches on their affirming journey, met with several ministers who seek to lead their churches into being more inclusive, and we worked in other ways to make church a safe place for the LGBTQIA+ community.

We continue to remotely support LGBTQIA+ Christians who reach out to us from across the country, finding themselves isolated and rejected by local churches.

Our Minister in Training

Natalie Hughes has continued to be a blessing, encouraging us all as she has developed as a minister. In 2022 she will complete her time with us. She acts as the chaplain for Shared Space, the social enterprise we started and has been involved in many areas of CFS community and leadership.



Our Minister

Peter Dominey as well as being part of us, he has led our partnership working with Shared Space, taking them through Covid-19; working towards opening further Shared Space sites, deeper work with the 70+ volunteers; and supporting other churches in establishing social enterprises and church plants. He has led the handing over of Southend Emergency Fund which was setup as part of Shared Space with our enabling. Southend Emergency fund drew together a coalition of 40+ local charities and in the middle of 2021 was handed on to operate under another local charity. To date it has raised £494,311 to support local people. Peter continues as a founding trustee of Together Free the Southend based national charity which works to set people free from modern day slavery and human trafficking.



International Deployments

We continue to support Dan and Annie Dupree. Dan was our student minister until 6 years ago and they now work in eastern Europe with the Roma people among others.

We continued to support and encourage them as they work under the auspices of BMS World Mission, and it was a blessing to have the family with us at our summer camping weekend at Mersea Island in Essex.



Partnership with Shared Space

Shared Space is the social enterprise CFS founded with which we partner:

- Our student minister acts as chaplain to the two stores and their volunteers.
- We run 'Making Space; groups in the two stores.
- Our minister leads their work.

CFS Aims for 2022 includes

- **Centre all we do on Jesus, so we become more like him.**
- **Live out and express the values** of CFS.
- Develop and work from the **CFS Development Plan.**
- Equip people of CFS to express and share the **good news of Jesus**, so Southend and people are transformed.
- **Write and publish** small group courses and videos, to assist CFS and other churches.
- Build upon our partnership with **Shared Space social enterprise**, further replicating the Shared Space model.
- Develop the **Community Groups** in depth and number so we become more authentic and prevalent.
- Identify, train and nurture CFS people, so **leadership** is shared, and new Community Groups can be planted.
- Encourage greater **generosity** of time and money within and beyond CFS, to release resources for the mission we are called to.
- Develop **children's** work.
- **Support Baptists and others in pioneering** so other people venture out in incarnational mission.
- **Share our resources and insights** through significant developments to the CFS website and through training events including Immersive Experiences.
- Be **receptive** to opportunities and needs as they present and respond with agility, so we don't miss the party.
- Support the newly formed anti-slavery and human trafficking charity called **Together Free** through one of our minister's time, given as a trustee.
- Run **residential events** as Covid-19 allows, including weekends and holidays.

Accounting Basis

The accounts were prepared on a receipts and payments basis.

Reserves Policy

- Reserves will be maintained to ensure core activity can continue during any period of unforeseen difficulty.
- A proportion of reserves will be maintained in a readily realisable form.
- The calculation of the required level of reserves is an integral part of the organisation's planning, budget and forecast cycle and it considers:
 - Risks associated with each stream of income and expenditure being different from that budgeted
 - Planned activity level
 - The church's commitments

On this basis, and having reviewed the policy during the year, the Trustees believe that for 2022 a reserve equivalent to six months' running costs should be maintained. The reserves policy will be reviewed annually.



Mary Blake
Church Secretary on behalf of Church from Scratch
11 February 2022

Examiner's Report



**CHARITY COMMISSION
FOR ENGLAND AND WALES**

**Independent examiner's
report on the accounts**

Section A

Independent Examiner's Report

| | | | |
|---------------------------------------|--------------------------------|------------------------|---|
| Report to the trustees/ members of | CHURCH FROM SCRATCH | | |
| On accounts for the year ended | 31 st December 2021 | Charity no (if any) | 1147116 |
| | Set out on pages | | |
| | 14-19 | | (remember to include the page numbers of additional sheets) |

I report to the trustees on my examination of the accounts of the above charity ("the Trust") for the year ended 31/12/2021.

Responsibilities and basis of report

As the charity trustees of the Trust, you are responsible for the preparation of the accounts in accordance with the requirements of the Charities Act 2011 ("the Act").

I report in respect of my examination of the Trust's accounts carried out under section 145 of the 2011 Act and in carrying out my examination, I have followed the applicable Directions given by the Charity Commission under section 145(5)(b) of the Act.

Independent examiner's statement

I have completed my examination. I confirm that no material matters have come to my attention in connection with the examination which gives me cause to believe that in, any material respect:

- accounting records were not kept in accordance with section 130 of the Act or
- the accounts do not accord with the accounting records

I have no concerns and have come across no other matters in connection with the examination to which attention should be drawn in order to enable a proper understanding of the accounts to be reached.

Signed:

Date:

20/05/22

Name:

ROBERT HADWEN

Relevant professional
qualification(s) or body
(if any):

BATS Audit Qualification (1984)
Internal Audit Unit
HM Customs & Excise (now HMRC)

Address:

47 OAKLEIGH PARK DRIVE

LEIGH ON SEA

ESSEX SS9 1RP

Section B

Disclosure

Only complete if the examiner needs to highlight matters of concern (see CC32, Independent examination of charity accounts: directions and guidance for examiners).

IER

1

October 2018

Statement of Financial Activity for the year ended 31.12.2021

| | Note | Unrestricted Fund £ | Designated Fund £ | Restricted Fund £ | Total 2021 £ | Total 2020 £ |
|---|------|---------------------------|-------------------------|-------------------------|--------------------|--------------------|
| <u>Incoming Resources</u> | | | | | | |
| Incoming resources from generated funds | | | | | | |
| Voluntary Income | 2 | 25,228 | 11,095 | 20,588 | 56,911 | 36,616 |
| Activities for generating funds | | - | - | - | - | - |
| Investment Income | 4 | 2 | - | - | 2 | 14 |
| Incoming resources from Charitable activities | 3 | 14,160 | - | - | 14,160 | 9,508 |
| Other incoming Resources | | - | - | - | - | - |
| Total Incoming Resources | | 39,391 | 11,095 | 20,588 | 71,073 | 46,137 |
| <u>Resources Expended</u> | | | | | | |
| Charitable Activities | 5 | 35,858 | 12,397 | 16,225 | 64,480 | 46,125 |
| Total Resources Used | | 35,858 | 12,397 | 16,225 | 64,480 | 46,125 |
| Net (outgoing)/incoming resources | | 3,533 | (1,302) | 4,363 | 6,593 | 12 |
| Transfer between funds - In | | 1 | - | - | 1 | - |
| Transfer between funds - Out | | - | - | (1) | (1) | - |
| Net movement in funds for year | | 3,534 | (1,302) | 4,361 | 6,593 | 12 |
| Fund Balance at 1 January 2021 | | 16,035 | 4,662 | 554 | 21,251 | 21,239 |
| Fund Balance at 31 December 2021 | | 19,570 | 3,360 | 4,915 | 27,845 | 21,251 |

Statement of Assets and Liabilities for the year ended 31.12.2021

| | Unrestricted Fund | Designated Fund | Restricted Fund | Total 2021 | Total 2020 |
|-------------------|----------------------|--------------------|--------------------|---------------|---------------|
| | £ | £ | £ | £ | £ |
| CASH FUNDS | | | | | |
| CAF Current | 4,977 | 3,360 | 4,915 | 13,252 | 1,213 |
| CAF Deposit | 14,569 | - | - | 14,569 | 19,566 |
| Paypal | 24 | - | - | 24 | 472 |
| | <u>19,570</u> | <u>3,360</u> | <u>4,915</u> | <u>27,845</u> | <u>21,252</u> |

| REPRESENTED BY | 2021 | 2020 |
|-----------------------|-----------------|-----------------|
| Unrestricted | | |
| General Fund | 19,570 | 16,036 |
| | <u>19,570</u> | <u>16,036</u> |
| Designated | | |
| Chaplaincy | 3,360 | 4,662 |
| | <u>3,360</u> | <u>4,662</u> |
| Restricted | | |
| Radical Roots | 4,748 | - |
| Refugees | - | 358 |
| Embrace Project | 167 | 196 |
| | <u>4,915</u> | <u>554</u> |
| Total reserves | £ <u>27,845</u> | £ <u>21,252</u> |

Notes to the Accounts for the year ended 31.12.2021

1) Accounting Policies

a) **Basis of preparation**

The accounts are prepared in accordance with the Accounting Regulations set out under the Charities Act 2011. The accounts have been changed in 2015 to the Receipts and Payments method.

b) **Donations**

Donations are accounted for gross when received.

c) **Investment Income**

Investment income is included in the accounts the year it is received.

d) **Fund Raising and Publicity Costs**

The Church does not make formal appeals for funds, and expenditure on these items are therefore not material.

e) **Gifts in Kind**

No amounts are included in the financial statements for services donated by volunteers.

f) **Grants payable**

The Church makes grants to other organisations whose charitable objects complement its work. They are accounted for in the year they are paid.

g) **Taxation**

The charity is exempt from tax on its charitable activities.

h) **Fund Accounting**

Unrestricted funds can be used in accordance with the charitable objectives at the discretion of the trustees. Restricted funds can only be used for particular restricted purposes within the objects of the charity. Restrictions arise when specified by the donor or when funds are raised for a specific purposes.

Notes to the Accounts for the year ended 31.12.2021

2) Voluntary Income

| | Unrestricted Fund | | Restricted Fund | Total 2021 | Total 2020 |
|--|-------------------|---------------|--|---------------|------------|
| | General Fund | Chaplaincy | Home Mission / TekUra / Embrace / Refugees / Pastoral / Radical Roots | | |
| Personal Giving | 9,335 | 6,285 | - | 15,620 | 9,502 |
| Income Tax recovered | 1,307 | 170 | 144 | 1,621 | 726 |
| Personal Giving via Stewardship Services | 13,680 | 340 | 600 | 14,620 | 7,995 |
| Donations - Organisations | 50 | 1,000 | 7,950 | 9,000 | - |
| Grants from trusts and other organisations | 170 | 3,300 | 11,894 | 15,364 | 11,786 |
| Other | 686 | - | - | 686 | 6,607 |
| | 25,228 | 11,095 | 20,588 | 56,911 | 36,616 |

3) Incoming Resources from Charitable Activities

| | Unrestricted Fund | | Restricted Fund | Total 2021 | Total 2020 |
|--------------------------------------|-------------------|------------|--|---------------|------------|
| | General Fund | Chaplaincy | Home Mission / TekUra / Embrace / Refugees / Pastoral / Radical Roots | | |
| Events - Whole Church | 1,745 | - | - | 1,745 | 792 |
| Events - Other | - | - | - | - | 46 |
| Grants for the provision of services | 11,170 | - | - | 11,170 | 8,670 |
| Preaching & Consultancy fee | 75 | - | - | 75 | - |
| Training run by CFS | 750 | - | - | 750 | - |
| Other | 420 | - | - | 420 | - |
| | 14,160 | - | - | 14,160 | 9,508 |

4) Investment Income

| | Unrestricted Fund | | Restricted Fund | Total 2021 | Total 2020 |
|----------|-------------------|------------|--|------------|------------|
| | General Fund | Chaplaincy | Home Mission / TekUra / Embrace / Refugees / Pastoral / Radical Roots | | |
| Interest | 2 | - | - | 2 | 14 |
| | 2 | - | - | 2 | 14 |

Notes to the Accounts for the year ended 31.12.2021

5) Charitable Activities

| | Unrestricted Fund | | Restricted Fund | Total 2021 | Total 2020 |
|------------------------------|-------------------|---------------|--|---------------|---------------|
| | General Fund | Chaplaincy | Home Mission / TekUra / Embrace / Refugees / Pastoral / Radical Roots | | |
| Direct Costs | | | | | |
| Ministry | 28,087 | 12,397 | 9,818 | 50,302 | 40,168 |
| Grants | 2,091 | - | 4,844 | 6,935 | 2,762 |
| Church activities | 471 | - | - | 471 | 863 |
| Events - whole Church | 3,531 | - | - | 3,531 | 707 |
| Events - Training run by CFS | 208 | - | 720 | 929 | 21 |
| Other | 316 | - | 800 | 1,116 | 411 |
| Support Costs | | | | | |
| Administration | 580 | - | - | 580 | 645 |
| Website / IT | 573 | - | 43 | 616 | 548 |
| | 35,858 | 12,397 | 16,225 | 64,480 | 46,125 |

6) Trustee Remuneration and benefits

Trustees received a total remuneration of £36,321 inclusive of stipend, Housing allowance and pension contributions. (2020: £35,089).

7) Staff Costs

| | 2021 | 2020 |
|--------------------|--------|--------|
| Wages and salaries | 46,836 | 38,521 |

During the year the Charity employed 1 members of staff, on a full time basis and on the 1st September 2020 Natalie Hughes joined the team as a Minister in Training working part time for CFS. No employee earned £60,000 p.a. or more.

Notes to the Accounts for the year ended 31.12.2021

8) Movement of funds

| | 2021 | | | | |
|---------------------|---------------|---------------|---------------|-----------|---------------|
| | 31/12/2020 | Incoming | Out goings | Transfers | 31/12/2021 |
| Unrestricted | | | | | |
| General Fund | 16,036 | 39,391 | 35,858 | 1 | 19,570 |
| Designated | | | | | |
| Chaplaincy | 4,662 | 11,095 | 12,397 | - | 3,360 |
| Restricted | | | | | |
| Home Mission | - | 9,800 | 9,800 | - | - |
| Refugees | 358 | - | 358 | - | - |
| Embrace Project | 196 | - | 29 | - | 167 |
| TekUra | - | 144 | 144 | - | - |
| Radical Roots | - | 6,300 | 1,552 | - | 4,748 |
| | 21,252 | 66,730 | 60,138 | 1 | 27,845 |

CHURCH FROM SCRATCH

England & Wales - Charity number 1147116

Accounts



CHURCH  SCRATCH

charity registered in England No 1147116
www.churchfromscratch.org

Annual Report and Impact Statement for the year ending 31 December 2020

Table of Contents

| | |
|-------------------------------------|-------------|
| Table of Contents | Page 2 |
| Annual Report and Impact Statement | Page 3 - 14 |
| Independent Examiner Report | Page 12-13 |
| Statement of Financial Activity | Page 14 |
| Statement of Assets and Liabilities | Page 15 |
| Notes to the Accounts | Page 16-19 |



Annual Report and Impact Statement for the year ending 31 December 2020

Charitable status

Church from Scratch is a registered charity in England, No. 1147116.
Principal address: 34 Cranley Road, Westcliff-on-Sea, Essex, SS0 8AL.

Trustees serving at 31 January 2020:

| | |
|----------------|---------------------|
| Mary Blake | Ongoing |
| Peter Dominey | Ongoing |
| Katy Parsons | Retired 24.2.2021 |
| Natalie Hughes | Appointed 1.9.2020 |
| Alex Emery | Appointed 24.2.2021 |

The charity is established by means of a constitution with trustees appointed by the Partners (members).

Summary of Objects and Activities

Church from Scratch is a Christian church, a member of the Baptist Union of Great Britain and the Eastern Baptist Association.

The principal purpose of the Church is the advancement of the Christian faith according to the ways of Jesus as found in the Bible and which uphold the fundamentals of the Baptist denomination. The Church also advances education and carries out other charitable purposes in the United Kingdom and other parts of the world.

In addition to the reports set out below, our activities include holistic mission, public worship, prayer, Bible study, teaching, baptism, communion, pastoral care and social action, through a community comprising of and working with many disadvantaged people.

Public Benefit Statement

The charity's trustees continue to have regard for both the charitable objects set out in the governing document and to ensuring that the activities of the charity, as described, meet the public benefit test. In so doing, they take account of the Charity Commission's public benefit guidance when planning the charity's programme of activities.

The Trustees of Church from Scratch are confident that the activities of the charity demonstrate strong evidence of public benefit.

Nature of the Church

Church from Scratch is a Jesus centred network of Communities, projects and initiatives concentrated in south east Essex; responding to local needs and opportunities – an inclusive church family of people who are often marginalised and disadvantaged. The church acts as a pathfinder in Christian mission and as a change-agent.

A network of Communities across south east Essex

At the heart of CFS is a flourishing network of Communities. These are typically home-based and form around a weekly meeting where people work out what it means to live as followers of Jesus. The six Communities are located across south east Essex, from Pitsea to Shoeburyness. They provide opportunities for discipleship and transformation as people develop relationships of trust over shared meals and through shared lives. Many marginalised and disadvantaged people are part of them, and British Sign Language is used in one group to include the deaf. Two Communities hold a weekly gathering in Shared Space stores (Shared Space is the social enterprise which CFS founded and partners with).

Each Community is guided by one or more facilitators who are coached, encouraged and supported by the church leadership. Inspirational small-group discipleship resources are created by an in-house team of authors to resource the Communities.

During 2020, people belonging to CFS have grown in faith and new people have joined as we share life and faith together, supporting each other with practical care for those among us facing serious mental and physical illness and difficult domestic situations.



The 4 foundational values of CFS

These have stood the test of time over the years and sustained us as we find continuing and new ways to express and live them out. They hold us to the ways of God's kingdom and are at the very centre of all that CFS is and aspires to be:

We value Jesus at the Centre: doing it his way; changing as we follow him deeper; relying on him; recognising we're a little bit of his worldwide church; realising Jesus' Spirit is at work now.

We value Building Community: building real and loving relationships as we rely on each other; growing up in faith together; giving our community away to others.

We value All people: moving wider to all; encouraging participation by all; standing up with those who need us.

We value Living life to the full: finding Jesus in all parts of life; holding on to faith as we take risks; helping each other to grow into the full and unique people God wants.

Activities, events and programmes in 2020

We continued to follow these four priorities

We sense these are needed to unlock our future and help us live out the values on which CFS is founded. The priorities are:

1. **Fostering passionate spirituality**
re-founding CFS on Jesus in a closer relationship with him.
2. **Building deeper connections**
helping us to belong to each other across the groups of CFS.
3. **Reaching new people**
with a focus on re-building opportunities for families, young adults and children.
4. **Increasing capacity***
finding the people, time & money we need to help CFS sustainably grow and deepen.

** CFS is a church with poorer people than other churches in the area but we are strong on love, community, faith and life. We're deeply grateful to Christians from other local churches who give generously to CFS, wishing to support our unique mission.*

Discipleship Weekend Away

In February, just before lockdown, we took over a youth hostel in Kent for a residential discipleship weekend. A group of about 30 participated in 4 sessions on being freed from the traps of life and a trip to the local winter sports centre.

Lockdown

This year has been difficult year for all and because we would usually meet in each other's homes around a meal, gathering together without a 'Public Place of Worship' and being socially distant has made it especially hard. Yet, despite the difficulty that Covid 19 has brought, God has continued to bless us and help us to reach out and support people in Southend.

Due to lockdown we had to cancel a wide range of events and trips which were in advanced planning, including a church team being sent to eastern Europe, two summer camps, a range of day events, two LGBTQ+ training events, etc.

Throughout lockdown the church has been meeting together on Zoom which has required additional IT and support to be provided for some - we have been able to develop new ways to share, bless and encourage each other. Our Zoom meetings have attracted several newcomers to CFS and look like this:

Weekly Community Groups

These groups were a continuation of our weekly get-togethers when we would normally meet in each other's homes. We were able explore the Bible together and share Communion in this way using resources created by our in-house team.

CFS Daily

These were short gatherings every weekday of lockdown, held in the early evenings to spend time with God and each other. It has helped us maintain a rhythm and stay connected with God and each other – especially for those on their own during lockdown.

Our New Minister in Training

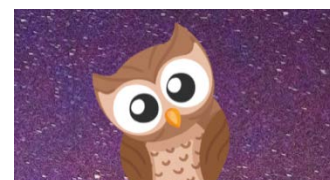
This has been an exciting time for the church as with the help of Zoom we have been able to hold Special Partners meetings and explore the possibility of God's provision of Natalie Hughes joining us as a Minister in Training for her final two years of study at Spurgeon's College. We have seen God provide financially and this has helped us to see His will in this decision. It has been a blessing to us all to appoint Natalie to join CFS on 1st September 2020. Due to relaxed COVID 19 restrictions we were able to hold a physical 'Big Welcome' to welcome and mandate her for the role.

Night Owl Prayers

We heard from people who were finding it difficult to sleep and so we created these weekly sessions at 10:30pm to give a quiet and reflective space.

Making Space

These are two groups we have started for our volunteers who work in the Shared Space social enterprise shops we partner with. We have been able to provide chaplaincy to both of our shops, and whilst in lockdown we merged the groups and with Shared Space held a weekly on-line support group instead.



'We Remember Them'

We have made contact with an organisation that supports local women involved in prostitution in the red-light area of the town and those who are battling addiction. Together we started to remember the names of many, many people we know who had died as a result of addiction. So, we created an online remembrance service for the town, called 'We Remember Them' which ran online three times, as an hour of quiet and meditation. We are continuing to support this group as they move into their premises to start a 'Drop-in Service'.



Weekend Workshops

A series of four on-line Weekend Workshops were held which was a fun way to connect and also meet other people on-line. The four sessions were:

- Learn Sign Language
- Cooking lesson (bring your own ingredients and cook along)
- Card Making for Christmas
- Taskmaster (fun quiz)



Love Through Lockdown

As a resource for other churches during lockdown we created a 24-page copyright free colouring book. It comprises original artwork of Bible quotes and doodles to download and has since been downloaded hundreds of times.



Talking God - Theological Reflections

We held a series of theological reflections over zoom to develop people's ability to think as Christians and teach theological reflection skill to an invited group of participants. These included: a reflection on the nature of online communion and another on the questions Jesus asked.

Christmas From Scratch

This was our modern-day adaptation of the Nativity story written and filmed by Church from Scratch and friends. It was a big undertaking with a large team. We created a series of 10 videos which are available at

www.churchfromscratch.org/christmas

We released them through December 2020 under the description: *'Imagine if Jesus was born in 2020. Mary is an ordinary teenager. Joseph a normal guy.'*

The videos were viewed over 50,000

times with churches and people from across the country and world, re-sharing them.



Southend Emergency Fund

We gave some of one of our minister's time to work with two others to establish Southend Emergency Fund (SEF) under the auspices of Shared Space. SEF has drawn together a coalition of 40+ local charities including Church from Scratch, to support people in the town effected by Covid-19 and its mitigation. To date £205,966 has been raised and over 60 grants given



When we were allowed out!

Within government guidelines we met and encouraged each other outside with events such as:

- Prayer walks – particularly for those who found Zoom difficult. And we created a video resource for people to use to support these.
- Pier Walk – to help sponsor a project run by our friends in an eastern European church.
- Garden Hop – in five gardens with firepits, looking at what the Bible says about fire.



Together Free: Peter, our minister continues as part of his Church from Scratch time to be a founding trustee of Together Free which works to stop modern slavery and human trafficking.

Resource creation and sharing

In 2020 we wrote and published small group resources including the following series:

- Vision, Values, Hopes
- The Greatest Showman
- Psalms
- Psalm Bank - Psalms written by church partners
- Christmas From Scratch
- CFS Daily Liturgical resources
- CFS Daily Resources
- A Bible reading scheme



We are committed to actively sharing these with other churches and church plants and using them in our own Communities. A hallmark of the resources is their highly participatory and interactive approaches that cater for a range of learning styles.

We also re-edited several of our old series of small group's resources to the new standard for use.

LGBTQ+

We are blessed to continue to welcome a good number of LGBTQ+ people who help to lead and serve with us. As an affirming church, and in partnership with other local churches, we have created events, training and resources for other Christians and churches who want to acknowledge the experience of LGBTQ+ people and talk about how to make church a safe environment.

We had two training events planned for 2020 which had to be cancelled due to COVID restrictions. We continue to remotely support LGBTQ+ Christians who reach out to us from across the country, feeling isolated and rejected.

Improved communication and participation

- Developed the church website further in the year to provide a resource section for other churches to use.
- Sent regular CFS email news to a mailing list of almost 200.
- Used videos as an internal way to improve communication.
- Built a following on Instagram account @cfs_southend as part of the CFS intent to reverse an older skewed age profile and reach the younger generations.
- Released videos on facebook with one receiving over 11,000 views and built a larger following for the CFS facebook page facebook.com/churchfromscratch/
- Developed the annual report (you are reading it!) to make it more attractive, relevant and accessible to the church.
- Released a CFS video to celebrate and express who we are, so new people become aware of, understand and feel able to join in with us.



International Deployments

We continue to support Dan and Annie Dupree. Dan was our student minister until 5 years ago and they now work in eastern Europe with the Roma people among others. We continued to support and encourage them as they worked under the auspices of BMS World Mission.



Partnership with Shared Space

Shared Space is the social enterprise CFS founded with which we actively partner:

- Formed an agreement where our student minister acts as chaplain to the two stores and their volunteers.
- Ran a CFS Community at Shared Space Westcliff and Southchurch
- Explored starting a Shared Space in Tilbury/Purfleet area in partnership with local Baptist churches in that area which did not find a way forward
- Continued to working towards the establishing of the third Shared Space as a mission presence.

Some of the CFS actions for 2021

- **Centre all we do on Jesus, so we become more like him.**
- **Live out and express the values** of CFS.
- Develop and work from the **CFS Development Plan**.
- Equip people of CFS to express and share the **good news of Jesus**, so Southend and people are transformed.
- **Write and publish** small group courses and videos, to assist CFS and other churches.
- Build upon our partnership with **Shared Space social enterprise**, further replicating the Shared Space model on another site as feasible.
- Develop the **Communities** in depth and number so we become more authentic and prevalent.
- Identify, train and nurture CFS people, so **leadership** is shared, and new Communities can be planted.
- Encourage greater **generosity** of time and money within and beyond CFS, to release resources for the mission we are called to.
- **Develop capacity** through the Immerse Intern Programme and create other pathways to help Christians to join CFS and to build the capacity of CFS.
- Develop **children's** work.
- **Support Baptist pioneering** so others venture out in incarnational mission.
- **Share our resources and insights** through an increased resource sharing through the new CFS website and training events so others are helped.
- Be **receptive** to opportunities and needs as they present and respond with agility, so we don't miss the party.
- Support the newly formed anti-slavery and human trafficking charity called **Together Free** through one of our minister's time, given as a trustee.
- Run **residential events** as COVID allows such as weekends and holidays.

Accounting Basis

The accounts were prepared on a receipts and payments basis.

Reserves Policy

- Reserves will be maintained to ensure core activity can continue during any period of unforeseen difficulty.
- A proportion of reserves will be maintained in a readily realisable form.
- The calculation of the required level of reserves is an integral part of the organisation's planning, budget and forecast cycle. It considers:
- Risks associated with each stream of income and expenditure being different from that budgeted
- Planned activity level
- The church's commitments

On this basis, and having reviewed the policy during the year, the Trustees believe that for 2021 a reserve equivalent to six months' running costs should be maintained. The reserves policy will be reviewed annually.



Mary Blake
Church Secretary on behalf of Church from Scratch
26 February 2021

Examiner's Report



CHARITY COMMISSION
FOR ENGLAND AND WALES

Independent examiner's
report on the accounts

Section A

Independent Examiner's Report

Report to the trustees/
members of

CHURCH FROM SCRATCH

On accounts for the year
ended

31st December 2020

Charity no
(if any)

1147116

Set out on pages

14 - 19

I report to the trustees on my examination of the accounts of the above charity ("the Trust") for the year ended **31/12/2020**.

Responsibilities and
basis of report

As the charity trustees of the Trust, you are responsible for the preparation of the accounts in accordance with the requirements of the Charities Act 2011 ("the Act").

I report in respect of my examination of the Trust's accounts carried out under section 145 of the 2011 Act and in carrying out my examination, I have followed the applicable Directions given by the Charity Commission under section 145(5)(b) of the Act.

Independent
examiner's statement

I have completed my examination. I confirm that no material matters have come to my attention in connection with the examination which gives me cause to believe that in, any material respect:

- accounting records were not kept in accordance with section 130 of the Act or
- the accounts do not accord with the accounting records

I have no concerns and have come across no other matters in connection with the examination to which attention should be drawn in order to enable a proper understanding of the accounts to be reached.

Signed:

Date:

24/02/2021

Name:

Mr Robert Hadwen

Relevant professional
qualification(s) or body
(if any):

BATS Audit Qualification (1984)
Internal Audit Unit
HMRC (formerly HMCE)

Address:

47 OAKLEIGH PARK DRIVE
LEIGH-ON-SEA
ESSEX SS9 1RP

Section B

Disclosure

Only complete if the examiner needs to highlight matters of concern (see CC32, Independent examination of charity accounts: directions and guidance for examiners).

Independent Examiner's Report

Give here brief details of any items that the examiner wishes to disclose.

None

Statement of Financial Activity for the year ended 31.12.2020

| | Note | Unrestricted Fund £ | Designated Fund £ | Restricted Fund £ | Total 2020 £ | Total 2019 £ |
|---|------|---------------------------|-------------------------|-------------------------|--------------------|--------------------|
| <u>Incoming Resources</u> | | | | | | |
| Incoming resources from generated funds | | | | | | |
| Voluntary Income | 2 | 20,406 | 8,155 | 8,055 | 36,616 | 32,067 |
| Activities for generating funds | | 0 | 0 | 0 | 0 | 0 |
| Investment Income | 4 | 14 | 0 | 0 | 14 | 36 |
| Incoming resources from Charitable activities | 3 | 9,462 | 0 | 46 | 9,508 | 10,306 |
| Other incoming Resources | | 0 | 0 | 0 | 0 | 0 |
| Total Incoming Resources | | 29,882 | 8,155 | 8,101 | 46,137 | 42,410 |
| <u>Resources Expended</u> | | | | | | |
| Charitable Activities | 5 | 34,935 | 3,493 | 7,697 | 46,125 | 44,399 |
| Total Resources Used | | 34,935 | 3,493 | 7,697 | 46,125 | 44,399 |
| Net (outgoing)/incoming resources | | (5,054) | 4,662 | 404 | 12 | (1,989) |
| Transfer between funds - In | | 0 | 0 | 0 | 0 | (1,853) |
| Transfer between funds - Out | | 0 | 0 | 0 | 0 | 1,853 |
| Net movement in funds for year | | (5,054) | 4,662 | 404 | 12 | (1,989) |
| Fund Balance at 1 January 2020 | | 21,089 | 0 | 150 | 21,239 | 23,229 |
| Fund Balance at 31 December 2020 | | 16,035 | 4,662 | 554 | 21,251 | 21,239 |

Statement of Assets and Liabilities for the year ended 31.12.2020

| | Unrestricted Fund £ | Designated Fund £ | Restricted Fund £ | Total 2020 £ | Total 2019 £ |
|-------------------|---------------------------|-------------------------|-------------------------|--------------------|--------------------|
| CASH FUNDS | | | | | |
| CAF Current | 1,063 | | 150 | 1,213 | 687 |
| CAF Deposit | 14,904 | 4,662 | - | 19,566 | 20,553 |
| Paypal | 69 | - | 404 | 472 | - |
| Stewardship | - | - | - | - | - |
| | <u>16,036</u> | <u>4,662</u> | <u>554</u> | <u>21,252</u> | <u>21,239</u> |

| REPRESENTED BY | 2020 | 2019 |
|-----------------------|-----------------|-----------------|
| Unrestricted | | |
| General Fund | 16,036 | 21,089 |
| | <u>16,036</u> | <u>21,089</u> |
| Designated | | |
| Minister in Training | 4,662 | - |
| | <u>4,662</u> | <u>-</u> |
| Restricted | | |
| Refugees | 358 | - |
| Embrace Project | 196 | 150.00 |
| | <u>554</u> | <u>150</u> |
| Total reserves | <u>£ 21,252</u> | <u>£ 21,239</u> |
| | - | - |

Notes to the Accounts for the year ended 31.12.2020

1) Accounting Policies

a) **Basis of preparation**

The accounts are prepared in accordance with the Accounting Regulations set out under the Charities Act 2011. The accounts have been changed in 2015 to the Receipts and Payments method.

b) **Donations**

Donations are accounted for gross when received.

c) **Investment Income**

Investment income is included in the accounts the year it is received.

d) **Fund Raising and Publicity Costs**

The Church does not make formal appeals for funds, and expenditure on these items are therefore not material.

e) **Gifts in Kind**

No amounts are included in the financial statements for services donated by volunteers.

f) **Grants payable**

The Church makes grants to other organisations whose charitable objects complement its work. They are accounted for in the year they are paid.

g) **Taxation**

The charity is exempt from tax on its charitable activities.

h) **Fund Accounting**

Unrestricted funds can be used in accordance with the charitable objectives at the discretion of the trustees. Restricted funds can only be used for particular restricted purposes within the objects of the charity. Restrictions arise when specified by the donor or when funds are raised for a specific purposes.

Notes to the Accounts for the year ended 31.12.2020

2) Voluntary Income

| | Unrestricted Fund | Fund | Total 2020 | Total 2019 |
|--|-------------------|----------------------|---|------------|
| | General Fund | Minister in Training | Home Mission / TekUra / LGBT / Refugees | |
| Personal Giving | 8,665 | 755 | 9,502 | 9,060 |
| Income Tax recovered | 726 | - | 726 | 1,998 |
| Personal Giving via Stewardship Services | 7,795 | 200 | 7,995 | 8,160 |
| Donations - Organisations | - | - | - | 150 |
| Grants from trusts and other organisations | 2,586 | 2,200 | 11,786 | 12,550 |
| Other | 634 | 5,000 | 6,607 | 150 |
| | 20,406 | 8,155 | 36,616 | 32,067 |

3) Incoming Resources from Charitable Activities

| | Unrestricted Fund | Fund | Total 2020 | Total 2019 |
|--------------------------------------|-------------------|----------------------|---|------------|
| | General Fund | Minister in Training | Home Mission / TekUra / LGBT / Refugees | |
| Events - Whole Church | 792 | - | 792 | 360 |
| Events - Other | - | - | 46 | 124 |
| Grants for the provision of services | 8,670 | - | 8,670 | 9,642 |
| Preaching & Consultancy fee | - | - | - | 100 |
| Training run by CFS | - | - | - | 80 |
| | 9,462 | - | 9,508 | 10,306 |

4) Investment Income

| | Unrestricted Fund | Fund | Total 2020 | Total 2019 |
|----------|-------------------|----------------------|---|------------|
| | General Fund | Minister in Training | Home Mission / TekUra / LGBT / Refugees | |
| Interest | 14 | - | 14 | 36 |
| | 14 | - | 14 | 36 |

Notes to the Accounts for the year ended 31.12.2020

5) Charitable Activities

| | Unrestricted Fund | | Restricted Fund | Total 2020 | Total 2019 |
|-----------------------------------|-------------------|----------------------|---|---------------|---------------|
| | General Fund | Minister in Training | Home Mission / TekUra / LGBT / Refugees | | |
| Direct Costs | | | | | |
| Ministry | 29,675 | 3,493 | 7,000 | 40,168 | 36,015 |
| Grants | 2,065 | - | 697 | 2,762 | 2,065 |
| Church activities | 863 | - | - | 863 | 1,023 |
| Events - whole Church | 707 | - | - | 707 | 2,698 |
| Events - Other | - | - | - | - | - |
| Pastoral expenses | - | - | - | - | - |
| Events - Whole Church non Holiday | - | - | - | - | 296 |
| Events - Training run by CFS | 21 | - | - | 21 | 241 |
| Other | 411 | - | - | 411 | 225 |
| Support Costs | | | | | |
| Administration | 645 | - | - | 645 | 1,299 |
| Website / IT | 548 | - | - | 548 | 537 |
| | 34,935 | 3,493 | 7,697 | 46,125 | 44,399 |

6) Trustee Remuneration and benefits

Trustees received a total remuneration of £35,089 inclusive of stipend, Housing allowance and pension contributions. (2019: £34,769).

7) Staff Costs

| | 2020 | 2019 |
|--------------------|--------|--------|
| Wages and salaries | 38,521 | 34,769 |

During the year the Charity employed 1 members of staff, on a full time basis and on the 1st September 2020 Natalie Hughes joined the team as a Minister in Training working part time for CFS.. No employee earned £60,000 p.a. or more.

Notes to the Accounts for the year ended 31.12.2020

8) Movement of funds

| | 2020 | | | | 31/12/2020 |
|---------------------|---------------|---------------|---------------|-----------|---------------|
| | 31/12/2019 | Incoming | Out goings | Transfers | |
| Unrestricted | | | | | |
| General Fund | 21,089 | 29,882 | 34,935 | 0 | 16,036 |
| Designated | | | | | |
| Chaplaincy | 0 | 8,155 | 3,493 | 0 | 4,662 |
| Restricted | | | | | |
| Home Mission | 0 | 7,000 | 7,000 | 0 | 0 |
| Refugees | 0 | 358 | 0 | 0 | 358 |
| Embrace Project | 150 | 46 | 0 | 0 | 196 |
| | 21,239 | 45,440 | 45,428 | - | 21,252 |