

# Partnership

Working with others to support our vision

Annual Report 2022



We  
need  
to talk

**STOP**  
**DOMESTIC**  
**ABUSE**

[stopdomesticabuse.uk](https://stopdomesticabuse.uk)

#stopdomesticabuse  
@southerndas

Contents

# Partnership

Our vision	3
Chair’s Report	4
CEO’s Report	6
What is Domestic Abuse?	8
Our work	9
Client story	10
Year at a glance	11
Staff case study	12
In the media	13
VAWG Agenda	14
Funding and fundraising	15
Other ways to help	17
Fundraising stars	18
Why do we do this work?	19
Children and young people	20
Marie’s case study	22
Harmful Cultural Practices	24
Up2U:MyChoice	26

Cover image: Children’s work adorns the walls of our Refuges

## Our Vision is

a world  
without  
domestic  
abuse.

### Our mission

Here at Stop Domestic Abuse we seek to help all those affected by domestic abuse by providing innovative and unique services. We protect and work with victims as well as helping perpetrators, the police and many other organisations.

### Our values

#### Our values are integral to how we work at Stop Domestic Abuse

- Equality
- Openness
- Honesty
- Respect for individual dignity and diversity
- Empowering women and children
- Care and Compassion

#### By committing to these values and to support our vision of “a world without domestic abuse” we will:

- Work in partnership
- Lobby and campaign
- Involve those who use our services
- Provide services that reflect the diverse needs of the communities we serve
- Be easily accessible
- Be relevant to service users’ needs
- Be of real assistance to women, children, young people and men affected by domestic abuse
- Provide services by a diverse workforce
- Be well managed and provide value for money
- Regularly monitor our services and outcomes
- Continually improve
- Ensure good governance of the organisation
- Be open to progressive and innovative ways of doing things
- Ensure everyone counts.

By achieving our vision for Stop Domestic Abuse and committing ourselves to the values that underpin our work, we will significantly improve the lives of those to whom we provide services.



Preventing abuse – now and in the future. A thank you to everyone who has played their part.

**There is never a dull moment at Stop Domestic Abuse. Each year brings new challenges and opportunities: this year has been no exception.**

The pandemic increased pressure on victims of domestic abuse while limiting access to support services. The cost of living crisis adds to these pressures. We're deeply grateful to our staff who have shown great resilience and commitment by continuing to deliver lifesaving support in these unprecedented times.

Stop Domestic Abuse celebrated its 45<sup>th</sup> anniversary in July. As understanding of the widespread nature of domestic abuse has increased, so too has recognition of the need for services, not only to support those experiencing abuse but also to prevent abuse in the future.

Our journey reflects these changes. We have grown rapidly, expanding our services while ensuring our ethos and values remain central to our strategic direction and service delivery.

### Exciting new opportunity

Claire Lambon, CEO, and her team, have won multiple grants and funding to ensure the future of the service. Stop Domestic Abuse now delivers all commissioned domestic abuse services in Hampshire and Portsmouth.

Additionally in July, working in partnership with domestic and sexual abuse charity Yellow Door, and No Limits, a charity offering free and confidential information, advice, counselling, advocacy and support to children and young people under the age of 26 in Southampton and Hampshire, we were awarded the contract to deliver domestic abuse and sexual violence services in Southampton. This is an exciting new opportunity.

Our refuge appeal has now exceeded its original target. We raised £1.5 million to create a purpose-built refuge for women and children fleeing domestic abuse. However, more is needed to meet the soaring cost of land, materials and labour. A revised target of £1.8 million, and a relaunch of the campaign, is on our agenda for the year ahead.

### Life-changing services

To function as an effective and dynamic organisation, strong governance is essential. We want to increase the diversity of the board to ensure it reflects the needs and experiences of our clients. To find out about becoming a trustee, please contact [info@stopdomesticabuse.uk](mailto:info@stopdomesticabuse.uk) for a chat.

**We greatly value the partnerships which enable us to provide these innovative, life changing services to those affected by domestic abuse. So, a huge thank you to everyone for the part you play in our fight for a world without domestic abuse.**

**Gill Butler**  
Chair





## CEO's Report

Chief Executive Claire Lambon celebrates the commitment shown by everyone at Stop Domestic Abuse as the charity develops new services and embraces strategic partnerships.

**I am proud of how much this amazing organisation has achieved during a year of organisational growth and intensive support for our clients. We respond with care, resilience and professionalism ensuring that all our clients have support to recover and heal.**

**Our clients have faced significant challenges throughout the pandemic, and these continue due to the cost of living crisis, further limiting a survivor's access to advice and support. With vital support from funding partners, we have provided welfare support to families facing hardship and upgraded facilities in our refuges.**

### Our clients face increasingly complex challenges

Demand for services is growing and it is essential that we are able to provide specialist support of the highest quality.

There is a steady increase in the number of clients experiencing

mental health challenges and requiring specialist one to one support. Nearly 70 per cent of clients describe having higher self-esteem when they move on from our support; and clients report feeling better able to support their mental health.

Children are coming to us with a range of complex needs, and the

number assessed as 'high risk' has increased by 26 per cent. Working with Hampshire Police, we have been delivering workshops on healthy relationships in schools across the county and this has led to unprecedented levels of children and young people coming forward for support.

98 per cent of children and young people told us that they felt safer following support from Stop Domestic Abuse's specialist Children and Young People's team.

We have worked with Portsmouth City Council and the Hampshire Police Crime Commissioner to deliver the Mentors in Violence Project and plan to extend this into other areas.

### New Contract in Portsmouth

In July 2021 we began a new service in Portsmouth through which we provide support to victims of domestic abuse who use unhealthy and abusive behaviours and are committed to change. The service was re-commissioned by Portsmouth City Council and the Police Commissioner and is testament to the quality of our service provision.

### Supporting community policing across Hampshire

In the light of the tragic case of Sarah Everard, we have been working with partner organisations and Commissioners to help Hampshire Police learn from the public response to this tragedy. We also supported a letter from Women's Aid to the Prime Minister outlining concerns about the Government's response to male violence.

We secured a contract to work with Hampshire Constabulary to support victims of domestic abuse where either the victim is connected to policing, or where the abuse is perpetrated connected to policing.

### Community Partnerships

We are helping communities to recognise, discuss and signpost domestic abuse. The project builds awareness of domestic abuse within the beauty industry and Library service and creates a supportive environment for victims to access support from trained staff.

On White Ribbon Day we launched our night-time economy campaign, distributing beer mats which include our helpline numbers. We also worked with Portsmouth Football Club to encourage men to speak up against male violence against women.

It was a privilege to see Portsmouth's iconic Spinnaker Tower lit in orange in recognition of our fight against domestic abuse in the city.



ethnicity, sexuality, ability, age, education, class, language and culture.

### Expansion into Southampton

Our tender to provide domestic abuse and sexual violence services in Southampton was successful. The new service began on 1 July 2022 and includes both refuge and community-based services. We are particularly proud of the wonderful new refuge we opened in Southampton, made possible by the hard work of our colleagues and partners at Sovereign Housing Association. We're working with our partners Yellow Door and No Limits to deliver this exciting new service.

This has been an extraordinary year of growth and development and as we celebrated the charity's 45th Anniversary in July 2022 I was able to reflect that this has only been possible due to the hard work and dedication of both colleagues and Trustees at Stop Domestic Abuse.

### Access to support for marginalised groups

The Police and Crime Commissioner for Hampshire & the Isle of Wight, Hampshire County Council and Portsmouth City Council have funded a number of specialist posts, strengthening our support for marginalised communities and refuge clients, as well as launch a range of specialist interventions for perpetrators.

We responded to the needs of both Afghan and Ukrainian refugees with leaflets translated into their most commonly spoken languages and provided information about women's rights and domestic abuse.

### Domestic abuse is a 'gendered crime'

Our name reflects that our services are truly inclusive to all. However, in the majority of cases, domestic abuse is experienced by women and perpetrated by men and is rooted in women's inequality and characterised by patterns of coercive control.

We recognise intersectional feminist principles and that women's particular experiences of violence and discrimination can be the result of multiple oppressions. Looking through the lens of intersectionality helps us understand that some women are affected more due to race,

**I would like to thank all my colleagues, Trustees and partners for their commitment to our vision of a world without domestic abuse.**

*Claire*



## What is Domestic Abuse?

In 2021, the Domestic Abuse Bill received Royal Assent and gave the UK its first statutory definition of domestic abuse.

Domestic abuse is a one-off act or a pattern of acts of

- Controlling, coercive, threatening, degrading or violent behaviour
- Sexual, financial and economic, online, digital, psychological or emotional abuse
- harassment and stalking.

### Gender and domestic abuse

**While both men and women may experience incidents of inter-personal violence and abuse, women are considerably more likely to experience repeated and severe forms of abuse, including sexual violence.**

The latest figures show that out of an estimated 2 million victims of domestic abuse in the last year, some 1.3 million were women. The majority (70 per cent) of victims of domestic violence deaths are female.

On average over 90 per cent of defendants in domestic violence court cases are male and over 80 per cent of victims are female. Every week in the UK, two women are murdered by a partner or ex-partner.

However, anyone can still experience domestic abuse regardless of their gender identity, ethnicity, ability, age, class, race or religion. Some victims who

have experienced other forms of oppression and discrimination are faced with further barriers to disclosing the abuse, accessing support and finding help.

We need to challenge cultural stereotypes which still assume that the perpetrators of domestic violence are men and the victims are women. However, at the same time, we must recognise that the majority of perpetrators are men.

We still live in a patriarchal society where men have more power, more sense of entitlement, and (on average) more income than women. To ignore the impact of gender on domestic violence does a disservice to people of any gender.

## Our work

### Key to services

- 1 Refuge
- 2 One-to-one Support
- 3 Group Work
- 4 Child Sexual Exploitation
- 5 Harmful Cultural Practices
- 6 Health Advocate
- 7 Ask Me
- 8 Target Hardening
- 9 Up2U:My Choice
- 10 Family work



### Community based services

Tailored one-to-one support for adult victims and children affected by domestic abuse across the whole of Hampshire and Portsmouth\*.

*\*All services in Test Valley are delivered by our partner and sub-contractor Finding Freedom From Abuse.*

### Refuge

We have 18 refuges across Hampshire, Southampton and Portsmouth and can accommodate 106 women and their children.

### Group work

Delivered to adults, children, and young people.

### Up2U

A behaviour-change programme delivered to people using abusive/unhealthy behaviours in the intimate relationships.

### Up2U:MyChoice

For victims of domestic abuse who have some unhealthy relationship behaviours.

### Ask Me

Ask Me Community Ambassadors raise awareness of domestic abuse in the areas we operate. We provide full training so they can create a safe environment where survivors can speak out.

### CSE

Specialist support for young people affected by Child Sexual Exploitation.

### Target Hardening

Target hardening provides practical home security items such as window alarms and locks.

### Harmful Cultural Practices

Specialist work addresses harmful cultural practices including female genital mutilation, forced marriage and 'honour' based violence across the whole of Hampshire.

### Health Advocate

A Domestic Abuse Health Advocate works at Winchester Hospital offering immediate advice and support to staff and patients.

### Family Work

When safe, a whole family assessment takes place to recognise the dynamics in the relationship to enable the service to respond accordingly.



## Client story

A joint working case study: Surviving with an ex-partner turned stalker

Jenny\* had split up from her partner, but he was stalking her, bombarding her with phone calls, entering the building where she lived and watching her in the underground car park she used.

**By the time Jenny was referred to Stop Domestic Abuse, the police had serious concerns about her safety.**

Police had issued five Police Protection Notices (PPNs) which assessed her vulnerability and helped everyone understand the level of risk she faced. Other professionals became involved. These included the family's social worker, a housing officer and a stalking advocate.

But by the time she was referred to Stop Domestic Abuse, Jenny was at high risk of harm.

Our support worker first contacted Jenny in April 2022. Full safety and support plans were co-created. Stop Domestic Abuse also made contact with the family's social worker to let her know what we could do to help Jenny.

*When he was released, a court order ensured he was electronically tagged*

**Working with third party organisations and getting Jenny's consent**

The next task was to support Jenny to not only feel more secure, but also to come up with practical ways of stopping the stalker. This meant talking directly to the housing officer, who secured the flat where Jenny lived.

Stop Domestic Abuse became the main point of contact for Jenny. She found the number of phone calls from organisations trying to help difficult to deal with.

The Stop Domestic Abuse worker asked a stalking advocate from another organisation to liaise with her rather than Jenny. We also worked with them to assist with their stalking risk assessments and agreed safety actions. All this was done with Jenny's consent.

**Keeping everyone updated is key to multi-agency approach**

Jenny was concerned her smoke detectors weren't working so Stop Domestic Abuse arranged for a visit from Hampshire Fire and Rescue under the 'Safe and Well' scheme, a free home fire safety visit.

We used our Target Hardening Fund and a 'ring doorbell' was fitted. It lets people see who is at their door, whether they are at home or not.

Jenny was also supported through the MARAC (Multi Agency Risk Assessment Conference) process and our support worker was key in obtaining Jenny's consent, thoughts and feelings, which were shared at these meetings.

All the professionals involved with the case were updated with the information needed to keep Jenny and her children as safe as possible until the stalker was apprehended.

**Successful outcome and far lower risk**

Eventually, the ex-partner was arrested and remanded by police. When he was released, a court order ensured he was electronically tagged. Also, both a non-molestation order and a prohibited steps order were issued by the courts, which further protected the children.

By working together with other professionals, Stop Domestic Abuse reduced Jenny's fear of danger from her ex-partner. The latest risk assessment showed Jenny was far safer and everybody involved in Jenny and her children's well-being saw this as a really successful outcome. For Jenny, it meant being able to sleep more soundly at night, knowing that she and her children were safe from harm.

*\*Client's name has been changed for anonymity*

## Year at a glance



We help thousands of people *every* year.

**This year at Stop Domestic Abuse has been no different.**

**Across Hampshire and Portsmouth, demand for our community, refuge and perpetrator services is growing. We supported twice as many people this year as we did during 2020-21 when access to services was affected by pandemic lockdowns.**

### Referrals and Support

In 2021-22 Stop Domestic Abuse received a total of **9660 referrals** and worked with a total of **3744 adults** and **1477 children and young people**.

#### This included:

- **350 women** and **435 children and young people** who stayed in one of our refuges
- **2348 adult** victims/survivors and **1233 children and young people** who received one-to-one support in the community

- **649 women** and **35 children and young people** (schools were still reluctant to do group activities mixing children from different classes) that attended one of our group programmes
- **48 adults** who were supported around harmful cultural practices
- **273 people** who were supported to change their abusive behaviours.
- **115 victims/survivors** received additional one-to-one support to improve their mental health
- **389 victims/survivors** received target hardening to improve their safety at home.

### Advice Line

The number of calls to our advice line varies day to day. On average the team takes between 60 and 70 calls and answers 55 referral emails per day.

Across the UK **10,809 women** and **11,890 children** have been supported in refuges.

*(Women's Aid: The Domestic Abuse Report 2022).*



## Staff case study

**Name: Imogen Brennan**

**Role: Domestic Abuse Navigator**

### What is your background?

Previously I was working in administration but I had always wanted to work in this sector and had been looking for a supportive environment to begin in. I was excited to find a frontline support role that gave me the opportunity to start my learning journey and work in an organisation that improves outcomes for victims and survivors of domestic abuse in Portsmouth, a city I'm proud to call home. I was immediately welcomed onto the team and began to love the role right away. The training package was such a helpful starting point and gave me the confidence to ask questions and test my knowledge with the team.

### Why did you want to work at Stop Domestic Abuse?

I had read a lot about the charity and the unique services we provide to adults and children experiencing domestic abuse across Hampshire. I knew it would be right for me. When I started work at Stop Domestic Abuse I was surprised by all the different services we can offer to survivors to best support them.

### Tell me about your role and any projects that you work on?

I mostly work with survivors of domestic abuse out in the community, however I've also begun some work within our refuges. I equally enjoy both, although they are very different roles. My main focus is doing the absolute best for the client and meeting all their needs, ensuring that the client feels that they have a voice and that they are heard and understood.

### What does a typical day look like for you?

I think every day within Stop Domestic Abuse differs. However a typical day for me involves attending support sessions with clients, some face to face and some over the phone, and ensuring actions from our previous sessions have been completed. And finding out what the client needs, ensuring that they feel they're being supported properly. Making sure we have extensive safety planning around the survivor's situation and tailoring these to each and every client to suit them.

### What is the best thing about your role and what you do?

At the heart of my role is the client. The best thing is empowering our clients while building great relationships and striving to make a difference for them while focusing on getting

things to move to a healthy and safe place for that client.

### What challenges do you have?

I think challenges differ depending on your current case load and what you need to complete that day. It is important to focus on prioritising and always asking for help if you feel you need it.

### Why should people work for Stop Domestic Abuse?

If you're looking for a challenging yet rewarding role, Stop Domestic Abuse is a great place to work. Even the smallest success stories with clients are amazing and the rapport we build within our very supportive teams is brilliant. I have never felt so supported within a job.

## In the media

Help us **talk**  
Help us **break** the silence.  
Help us **stop** domestic abuse.

**Many victims don't talk about their experience of domestic abuse. They feel humiliated that it is happening to them and fearful of the repercussions from their abuser if they speak out, leaving them little option but to suffer in silence.**

At Stop Domestic Abuse, we appear regularly in the media and work with politicians and other influencers to get people talking about domestic abuse. Through the year we have had a strong presence across television, print and radio.

### Winter

Claire Lambon discussed White Ribbon Day and our 16 Days of Action campaign on Express FM, raising awareness of our the issue and challenging taboos.



International Day of Zero Tolerance for Female Genital Mutilation saw Stop Domestic Abuse, as members of the Portsmouth Harmful Practices Group, delivering training to professionals in the health, social care, emergency services, housing and voluntary sectors.

### Spring

The Portsmouth skyline was lit up in orange as the Spinnaker Tower became a powerful symbol of the city's support for International Women's Day.



### Summer

Southampton's Lord Mayor formally opened our two new refuges in Southampton as Stop Domestic Abuse became the domestic abuse and sexual violence commissioned service provider in the city.

Founders, Trustees and staff of Stop Domestic Abuse celebrated the charity's 45th Anniversary.

### Autumn

BBC South Today filmed at one of our refuges and ran an insightful news story about domestic violence and our work.

Claire Lambon was interviewed by ITV News Meridian about the impact the cost of living crisis is having on survivors of domestic abuse.

For more news and events follow us on our social media platforms [@southerndas](#) or on our website [stopdomesticabuse.uk/news](https://stopdomesticabuse.uk/news).





## VAWG Agenda

### Engaging with the Violence Against Women & Girls (VAWG) Agenda

**Our monthly programme of talks for staff has included some fantastic presentations from agencies and experts from the VAWG field. Our guest speakers have covered topics including misogyny, feminist labelling, the Domestic Abuse Act, gender injustice, White Ribbon Day, the Femicide Census, domestic homicide and women with complex disadvantages.**

We are very proud of the calibre of our speakers, the diverse conversations they have generated and the time they have dedicated to VAWG Hour.

VAWG Hour was created following consultation around how the ongoing issue of male violence towards women and girls remains at the forefront of our conversations. As an organisation and, as part of further embedding feminist principles into our work, we are looking forward to VAWG Hour continuing to be the important platform it has become.

#### Some of the speakers we have been delighted to host this year have included:

**Karen Ingala Smith**, CEO of Nia and Counting Dead Women blog author. Karen was inspired from fact finding for her blog and with other founded The Femicide Census in 2015. The Femicide Census has a range of uses to contribute to improving knowledge, strategy, policy and practice including: raising awareness of men's fatal violence against women; providing a clearer picture of men's fatal violence against women in the UK by factors including relationship between perpetrator and victim, age, form of violence selected, location of fatal incident and justice outcome; remembering and raising the status of women killed by men and; reducing men's violence against women and girls.



**Nicole Jacobs** joined us to discuss her role as the Domestic Abuse Commissioner and talked to us about the landscape for domestic abuse victims and survivors across England and Wales focusing on some of the key issues they face. Nicole is committed to championing victims and survivors of all ages, status, and backgrounds. Her goal is to improve the response to tackling domestic abuse by holding agencies to account as well as shining a light on good practice where it is seen across England and Wales.



**Professor Tamsin Bradley**, Professor in International Development Studies in the Faculty of Humanities and Social Sciences, University of Portsmouth, was our inaugural speaker and provided valuable mentorship and guidance to our VAWG Hour project team. Tamsin has worked and partnered with Stop Domestic Abuse since 2013. Initially this was on a Female Genital Mutilation/Cutting (FGM/C) in Hampshire research and capacity project followed by a Home Office funded Harmful Cultural Practices (HCP) project which culminated in the report "Transforming the Lives of Women and Girls by Ending Harmful Cultural Practices in Hampshire: Awareness, Prevention and Response".



## Funding and fundraising

### Your support brings us closer to our vision of a world without domestic abuse

**For 45 years we have provided front line services to women, children and men affected by domestic abuse.**

**With demand for refuge places at an all time high and calls to our helpline and community services increasing, we are doing all we can to continue this vital work.**

#### Fundraising Applications awarded in 2022

We are so grateful to our funding partners and commissioners for their support and commitment to our programmes for victims, survivors and perpetrators of domestic abuse.

The Police and Crime Commissioner for Hampshire, together with our local authority partners at Hampshire, Portsmouth and Southampton, have enabled us to deliver inclusive, innovative projects to our clients.

Thanks to funding from the National Lottery Community Fund, BBC Children in Need and Henry Smith Charity, we have continued to deliver life-changing outcomes to adults and children affected by domestic abuse.

#### Fundraising events and donations – Our supporters

We are also grateful to our local partners who continue to donate and raise funds to support the fight against domestic abuse. There are too many to mention, but we would like to highlight just a few.

Thanks to Hampshire connect4communities, we provided food and fuel vouchers to clients struggling over the summer holidays. Over the winter, the fund provided warm bedding and laundry equipment for our refuges.

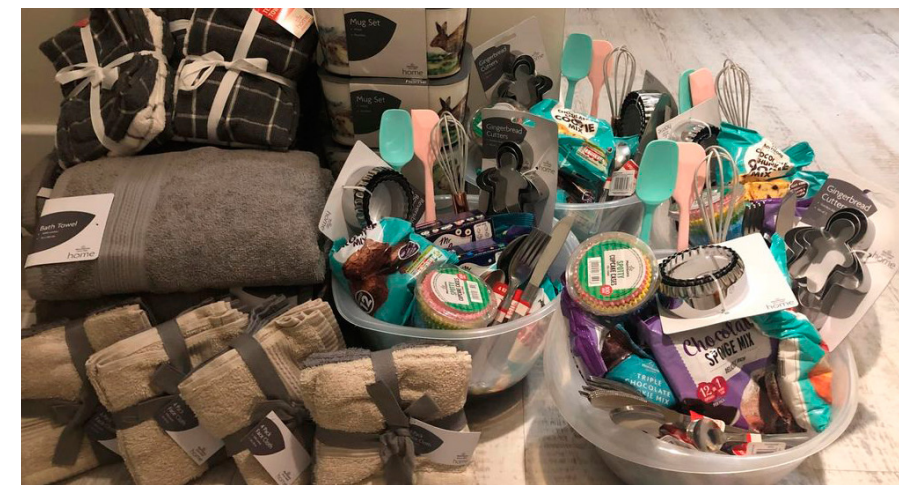
Christmas always sees an outpouring of generosity from the community, and we are enormously grateful. Across Hampshire, hundreds of organisations, community groups,



churches and individuals give generously to ensure that women, children, young people and men using our services receive gifts, food, vouchers and other essential items. In Portsmouth additional support was offered, thanks to Portsmouth Diocese and The News, who provided gift vouchers for our Portsmouth clients to spend at Christmas.

We are grateful to companies and organisations who have provided valuable support to our programmes.

Thanks also to the generous members of our community who have offered donations of clothes, toys, baby equipment, furniture and bedding for our refuges.

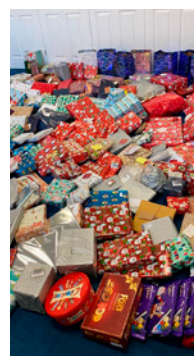


Thank you.



## We couldn't do what we do without the support of our local communities

Every pound donated makes a difference to the lives of domestic abuse victims and survivors. Some of our supporters choose to make regular donations, others make a one-off donation. Some of our supporters make a donation instead of sending Christmas cards. Others organise fundraising events with friends or colleagues, having fun at a coffee morning, or a pub quiz, a raffle or a cake sale!



### Support us now

[stopdomesticabuse.uk/support-us](https://stopdomesticabuse.uk/support-us)

Scan here to go straight to our donations page



## Other ways to help

### Take on a Challenge for Stop Domestic Abuse

Fancy taking part in the Great South Run in the autumn, or the ABP Southampton Half Marathon in the Spring? Or joining us for the Santa Run in Southsea in December? You might even dream of doing a sponsored sky dive over Salisbury Plain!

Drop us a line to find out how you can take on a challenge and help us fight domestic abuse. We can help get your fundraising and training off to a great start!

Find out how our fundraising stars Lisa and Leeanne reached their target on page 18

### Fundraise with Friends

However you choose to fundraise for us, we'll be there to help you have fun and raise money to help us continue providing life-saving services.

### Trusts and Foundations

Trusts and foundations make a crucial contribution to the innovative services we offer to survivors of domestic abuse. To speak to our fundraising team, please contact [changemaker@stopdomesticabuse.uk](mailto:changemaker@stopdomesticabuse.uk)

## Support our New Refuge Appeal

**Refuge support for women and children is at the heart of what we do at Stop Domestic Abuse. We work with local authorities to provide safe, supportive accommodation for families who have made the incredibly hard decision to leave their home to find safety.**

The national network of refuges is under threat. Funding cuts have forced refuges to close. Nationally, two-thirds of victims in need of safe accommodation are being turned away because of a lack of suitable refuge space. The situation has become worse due to increased isolation and financial difficulties during the pandemic placing additional pressures on

personal relationships and local services. We are working with clients, commissioners, partners, housing associations and staff to deliver safe and welcoming accommodation through the network of 18 refuges we run for our local authority partners.

Our vision is to build our own refuge in South East Hampshire,

where women and children can recover and begin to rebuild their lives. This purpose-built, expertly run refuge will provide a unique, child-centred holistic centre where the physical environment will be as much a part of victims' recovery as the specialist support we will provide to our clients. We have identified a location with good links to local transport hubs, schools and community services. And thanks to our wonderful supporters, we are well on the way to meeting our fundraising target to start to build the new refuge.

To find out how you can get involved, as a fundraiser, campaigner or volunteer, get in touch [changemaker@stopdomesticabuse.uk](mailto:changemaker@stopdomesticabuse.uk)

Thank you.

### Volunteer

Get in touch to find out how you could help us provide practical support to victims of domestic abuse.

Contact [changemaker@stopdomesticabuse.uk](mailto:changemaker@stopdomesticabuse.uk)



### Play your local community lottery

Support our services in your local community and play the lottery at the same time. We're proud to be one of the charities benefiting from the Fareham, Southampton, Rushmoor and Hart community lotteries. Visit our website to find out how you can get involved.

### Fundraise at Home

Sign up to AmazonSmile, select Southern Domestic Abuse service as your charity, and your everyday purchases will help us raise more money to support victims and survivors of domestic abuse.

*"If it wasn't for Stop Domestic Abuse I wouldn't be here today. I felt like my life was ruined but now I have hope for the future..."*

*"I feel safe here, there are cameras outside to keep us safe. I like my new school but I miss my friends and my old big house."*



## Fundraising stars

Athletes motivated to help domestic abuse victims and survivors

In the Summer, Leeanne Barber and Lisa Phipps, two fitness instructors from Havant, completed the IRONMAN Vitoria-Gasteiz challenge and raised over £5,000 for Stop Domestic Abuse.

Three years ago, Leeanne and Lisa decided to take on the ultimate challenge of completing a full IRONMAN, before COVID-19 put paid to their plans. Their intensive training regime and fundraising efforts finally paid off this year. In July they travelled to Spain and completed the challenge in under 12 hours.

The event was a gruelling 2.4 mile open water swim, 112 mile bike ride followed by a Marathon.

### Mentally and physically tough

Leeanne and Lisa chose to support Stop Domestic Abuse through their epic challenge. Thanks to Leeanne, Lisa and many other generous supporters, we are now one step closer to building a dedicated

refuge providing innovative support services to women and their children fleeing domestic abuse.

Leeanne said: "This was such a tough challenge both physically and mentally. I'm delighted that we have successfully raised vital funds to help Stop Domestic Abuse build a new local, child-centred, holistic refuge. Knowing we are helping women and children affected by domestic abuse has kept us motivated throughout our journey."



## Would you like to support us?

We couldn't do what we do without the support of community supporters like Leeanne and Lisa. If you'd like to support us through a fundraising challenge, we'd love to hear from you. Get in touch by contacting [changemaker@stopdomesticabuse.uk](mailto:changemaker@stopdomesticabuse.uk)

Thank  
you.

## Why do we do this work?

We have one clear vision: A world without domestic abuse.

To make that vision a reality we offer many different services and projects, ensuring that domestic abuse is 'everyone's business', that victims are supported to recover and perpetrators are supported to change their behaviour. Every client's experience and journey is unique and our services reflect that.

We offer one-to-one support focussing on what is important to each client and we provide a wide range of group work programmes and complementary services that they can access.

**REFUGES** provide a safe place to live for women and children when they cannot stay in their own homes. We make each refuge feel like a home and provide both one-to-one support and group activities for women and children.

**COMMUNITY-BASED SERVICES** offer as many victims and survivors as possible the chance to stay in their homes. This may be one-to-one support in person in the home or a place the client feels safe. It could be on the phone, via video calling, email or text. We help improve their safety or address other issues affecting them.

We offer **TARGET HARDENING**. A specialist worker visits homes to give safety advice and issue personal and home safety equipment.

Our **GROUP WORK** programmes give participants the opportunity to learn about domestic abuse and how it has affected them. They can then recognise any warning signs in future relationships. Our clients tell us that they like meeting others with similar experiences and many friendships are made that continue after the group has finished.

We have specialist support for people affected by 'honour'-based violence, female genital mutilation, forced marriage and other **HARMFUL CULTURAL PRACTICES**.

**CHILDREN AND YOUNG PEOPLE'S SERVICES** offer an opportunity for children to understand what they have experienced and to help them feel safe again. Domestic abuse can have a severe and traumatic impact on children and young people which can result in developmental delays, unhealthy coping strategies and difficulties in friendships and relationships.

**MENTAL HEALTH SUPPORT WORKERS** offer additional support to clients in refuges and the community to address low-level mental health needs.

**UP2U:MY CHOICE** is a programme for victims who have some unhealthy relationship behaviours, often as a result of the abuse they've experienced.



**SPECIALIST PROGRAMMES FOR PEOPLE WHO USE ABUSIVE AND UNHEALTHY BEHAVIOURS** are key because domestic abuse won't end unless perpetrators are supported to change. Up2U:Creating Healthy Relationships works with people who admit that they have been abusive or used unhealthy behaviours and are committed to changing.

**EARLY INTERVENTION AND PREVENTATIVE WORK** includes training professionals from other organisations to recognise domestic abuse and be confident in talking about it.

This helps them understand the different types of support available for victims, survivors and perpetrators and the impact domestic abuse can have on their clients.



## Children and young people

Support in many forms

Children are victims of domestic abuse too. Children and young people's reactions to the trauma of witnessing domestic abuse are just as varied as adult reactions.

**This trauma can have physical, social, emotional, and behavioural impacts, often with these impacts overlapping. Physically, they can experience bed-wetting, develop eczema, struggle with sleep.**

Socially and emotionally, they can develop entrenched feelings of fear and anxiety, they can develop a sense of responsibility for protecting others, struggle with self-worth and find it difficult to make or keep friends. Behaviourally, they will often either internalise or externalise the feelings that are having. Externalised behaviour can present as aggressive, bursts of anger, internalised feelings can present as being withdrawn or even detached and uninterested.

Children and young people experiencing any of these feelings or behaviours need support so they can recover and learn how to cope with their experiences. Support from our service comes in many forms. It could be programmes and groups, school workshops and support interventions, one-to-one sessions from a specialist children and young person (CYP) outreach worker or joining activities with a funded playworker. We support the children to gain improved understanding around safety,

mental and physical health, friendships and relationships, confidence and self-esteem.

### School projects

Throughout the year we have continued to support children and young people both in schools and within the community. Pupils aged eight to eleven are introduced to the concepts of healthy relationships, safe people and ways of managing emotions, through a range of interactive and discussion-led activities.

Our Safe Little Bear groups continue to be in demand in schools across the region, with a group of four to seven year old children introduced to simple concepts of healthy behaviours and safety through five weekly sessions.

### Thousands of teenagers

We have delivered one-to-one sessions tailored to meet individual needs and our ongoing support continues to make a marked difference in young people's lives. Our support sessions have been delivered to young people who have witnessed domestic abuse in their homes and through our APA work (adolescent to parent abuse) we have also been

able to support young people who are displaying abusive behaviours themselves. We continue to receive referrals for support from schools, social workers and many other family services.

In addition to our one-to-one support sessions, we continue to deliver group work helping both to educate and to support young people. A new project we have successfully delivered has focussed on the prevention of inappropriate sexualised behaviour. The workshop has been delivered to thousands of teenagers all over Hampshire and our feedback forms have demonstrated just how much pupils have taken away from the sessions.

### Everyday scenario

Our skilled workers have delivered interactive sessions in hundreds of mainstream and specialist schools across the county. The interactive sessions presented pupils with a range of different behaviours and they were encouraged to share their opinions as to which behaviours may be appropriate.

Specialist children and young people's workers were able to create an environment where pupils could challenge each other and have complex discussions about healthy relationship behaviour. Case studies were presented and encouraged pupils to apply the ideas to an everyday scenario.

### Refuge

Families come to refuges because they have no other option. It is not safe for them to remain in their homes. As a refuge is only a temporary place to stay, it is crucial that children and young people are supported through this unsettling and potentially upsetting period of their lives, until they can move into a permanent home with their non-abusive parent.

Our Children and Young People refuge workers and play workers welcome women and their children into refuge and provide them with support to meet their needs. Our team works collaboratively to identify the needs of individual children, young people and their mothers so that they manage the impact of trauma and begin the healing process of their domestic abuse experience.

In each refuge we have a dedicated play room or play area which we fill with toys, play and craft equipment. Throughout their stay in refuge, Stop Domestic Abuse staff organise and supervise children's activities during the day and after school as needed.



### Allow children to be children

**A child who has experienced emotional trauma is more likely to adapt unusual communication methods and challenging behaviours. This is also likely to impact on their mental health. Applied intervention (play therapy) can minimise the long-term impact and be implemented as a means of treatment to these behaviours and feelings. Play therapy is a structured, theoretically based approach to therapy that builds on the normal communicative and learning processes of children**

**A variety of play sessions and activities are delivered through therapeutic play initiatives and are often themed to various events throughout the year and aim to allow children time to be what they are – children.**

**Rachel Windebank, Operations Director said,** *"We provide a model for healthy relationships which enables children and young people to identify risks, navigate personal/social challenges, and to stay healthy and safe. The team educates children and young people to recognise signs of abuse, be less likely to engage in offending behaviours, and to equip themselves with the knowledge and tools to seek help and support."*

I like it here because of lots of friends. I sleep on bunk beds  
I love the park  
My new school is nice.  
From Am.

Moving to a shelter has provided my family with safety, security and comfortable space to sleep in.

from MN (Room 5)

Like that I feel safe here and theres cameras. I like the school but miss my friends and my old big house.

From HM



# Marie's case study

Adolescent to Parent Abuse Programme

There is no single cause of adolescent to parent violence. Parental domestic abuse, mental health needs, substance abuse, learning difficulties and other behavioural problems present in some, but not all, cases.

There are some situations where there is no explanation for the behaviour and other children in the family are not violent or abusive.

Stop Domestic Abuse's Adolescent to Parent Abuse (APA) programme delivers one-to-one support to decrease the frequency and intensity of abusive and violent behaviour. It addresses the underlying cause of behaviour in a non-judgemental way. We also carry out preventative work in small groups to understand unhealthy relationship behaviours and attitudes.

Our client-centred approach aims to bring about positive changes in relationships for the long term. We aim to reduce children and young people's violent and abusive behaviours and improve relationships with parents and other family members. Therapeutic, educational and creative activities embed progress and deepen reflection.

They develop empathy, improve immediate child and parent relationships and improve expectations for the child's future partner relationships.

Our lead worker in the APA programme enables clients to understand and express their emotions healthily and improve their communication with parents and carers.

## A healthier future for Marie\*

### Background and reasons for referral to service

A 15-year-old girl was referred because of her unmanageable and abusive behaviour towards her mum and dad, who were separated. Most of the physical and mental abuse was targeted at her mum. Marie was using cannabis and alcohol as coping mechanisms and had depression and anxiety. She had witnessed domestic abuse at home.

### Challenges

She was frequently missing school. She slammed an iron into the wall, grabbed the steering wheel when her mum was driving and poured a bottle of Coke over her mum's head. She was arrested by police for physical violence and for damage to her mum's home. The mum was scared of having her at home and Marie went to stay with her grandmother.

### Stop Domestic Abuse programme of work

Our first sessions focused on Marie understanding family dynamics and her feelings on each family relationship. Sessions included discussions and activities around anger management, triggers, unhealthy coping mechanisms and how this intensifies unhealthy behaviours. It included activities connecting thoughts, feelings and behaviours, demonstrating the power

of making the right choices by understanding the consequences.

### Progress and outcomes

Stop Domestic Abuse worked with Marie every week, liaising with her social worker to get her back to school. We provided help to end cannabis and alcohol use which led her to feel more energetic and able to focus on her school work and family relationships.

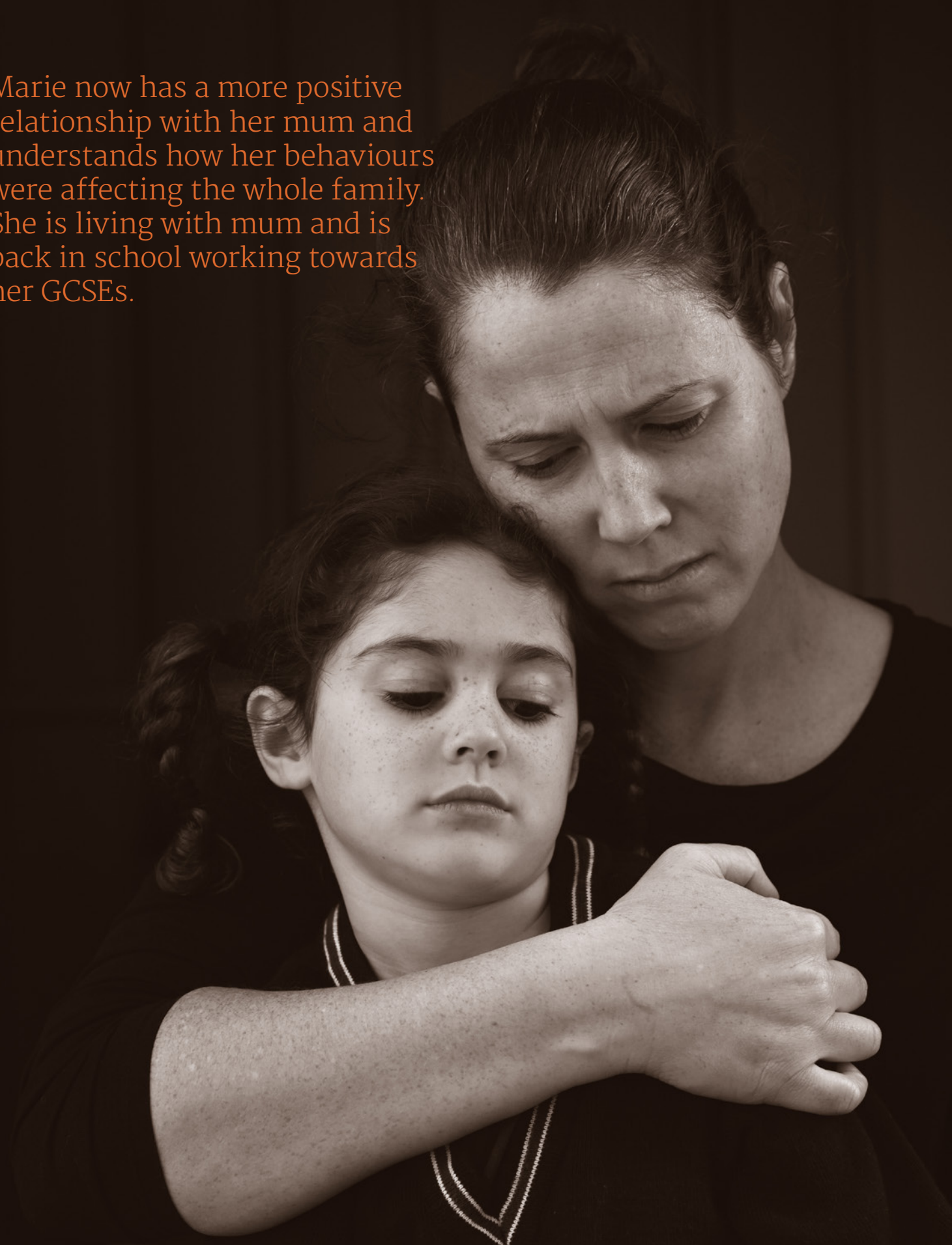
Marie now has a more positive relationship with her mum and understands how her behaviours were affecting the whole family. She is living with mum and is back in school working towards her GCSEs and is considering sixth form college.

Marie's support worker said: "Marie has definitely grown in confidence when we talk about her future. The fact that she is predicted 7s and 8s for her GCSEs is really positive."

This project is made possible by funding from Hampshire County Council and the Hampshire Police and Crime Commissioner.

\*Name has been changed for anonymity

Marie now has a more positive relationship with her mum and understands how her behaviours were affecting the whole family. She is living with mum and is back in school working towards her GCSEs.





## Harmful Cultural Practices

Call time on Female Genital Mutilation (FGM) and Harmful Cultural Practices (HCP)



Stop Domestic Abuse offers specialist support for anyone affected by ‘honour’ based violence, female genital mutilation, forced marriage and other harmful cultural practices.

**Nazia Shah works for Stop Domestic Abuse as a Community Development Worker – Harmful Cultural Practices. Read on to hear what she has to say about this vital area of work and the communities she is working with.**

### Why is this role so important at Stop Domestic Abuse?

When I was working as a community worker, many women used to come to me and share their experience of domestic abuse. At that time, I couldn’t identify the abusive behaviour they were going through. I just knew that they were not having happy, healthy

relationships and I really wanted to understand, help and support them. The women who used to confide in me also used to tell me how British people would not understand their culture and how they felt they would be judged or not given the support they needed.

### Is there a problem reporting domestic abuse in minority communities?

I unfortunately witness abusive and violent behaviour in my local community. Women do not report the abuse or violence they are going through because they feel that if they do, they would be shaming their families or community. Therefore, they would rather

stay quiet and suffer in silence. This way of thinking is unfortunately common in many cultures but I knew I could understand their issues and build a good rapport with victims.

There is so much work to be done to encourage the reporting of domestic abuse in the minority ethnic communities. My work is a step towards an open culture in the area of domestic abuse.

### Tell me about your role and any projects that you work on?

My job title includes the words ‘harmful cultural practices’. This means supporting the victims of domestic abuse who are also victims of honour-based abuse, forced marriages or female genital mutilation.

I give one-to-one emotional and practical support to victims and also offer training to professionals and communities about honour-based violence, forced marriages, FGM and other harmful cultural practices.

At the moment, I am trying to engage with women’s groups from minority ethnic communities in Hampshire as I cover the whole of the Stop Domestic Abuse area. It is also about identifying professionals who can benefit from education and training in harmful cultural practices so that they can give a tailored support to the community.

### What sort of feedback have you had?

I recently offered training about female genital mutilation to professionals from different backgrounds (nurses, midwives, social workers and others) and got great interest and feedback from them.

*“This was an absolutely brilliant course... really informative and so shocking... thank you.”* (Caroline, attendee at an FGM training session.)

### How are you empowering women?

I also run a women’s group for ethnic minorities which aims to tackle isolation, combat loneliness and empower these women to lead and connect with others in their community.

### A member of Nazia Shah’s women’s group, said:

*“The talk about honour-based abuse was insightful and useful. I know honour-based abuse happens mostly in my country, but I didn’t know it happens here too. I got to know this when we had the discussion within the women’s group. It’s useful, educative and makes people more aware. The group is also a great place for me. It really helps me mentally and means I can educate others on the issues.”*

We offer wellbeing, awareness and informative sessions on many topics such as sexual health, parenting, mental health, domestic abuse and FGM. The women really enjoy connecting with each other. At one session, I gave awareness training about honour-based abuse and got great feedback from the attendees.

### What is the best thing about your role and what you do?

The best thing about my job is seeing practically how my work has had a positive impact on a victim’s life. It is not easy though, as the victims go through many phases before being able to turn their life around and be the actor of their life. But these small phases, these small changes, mean a lot to them and to me too.





## Up2U:MyChoice

Learning skills to change

The Stop Domestic Abuse Up2U:MyChoice programme supports those who feel that their previous intimate relationships have impacted upon everyday interactions with their partner, family, friends and professionals.

Even though they are no longer trapped in a harmful relationship, the effects can continue with many victims and survivors finding it difficult to trust

others. They experience feelings of blame, guilt, shame or embarrassment and have difficulty expressing feelings and their needs and wants.

Up2U:MyChoice operates across Portsmouth, Havant, Fareham, Gosport and East Hants. It's suitable for anyone age 16 and over who feels they want to change behaviours in their relationships and who wants to learn the skills to do this.

One client said: "I had some reservations with Up2U:MyChoice as I had to speak about my life. However things were so bad I knew I had to get help. I didn't know what to expect when meeting my facilitator and I felt really anxious, too wrapped up in myself. But the first meeting felt warm and welcoming."

### Petra's story

**It can be a tough decision to come forward and acknowledge that you need support. One of our recent service users had this to say:**

"I heard about the My Choice programme through my support worker. At the time, I was in such an emotional fog but I felt happy about the referral as I knew I needed help. My relationship with my son was awful, he was physically destructive in the home, excessively verbally abusive towards me and extremely controlling. He would say things like "I wish you'd die of cancer". I was very scared of him.

I did have some reservations regarding engaging with Up2U:MyChoice as I did not want to involve anybody from outside of my relationships. I had problems trusting people and I wanted to keep things private. Despite this, I felt as though I was in a dilemma as I was at a point of desperation.

#### Right amount of input

At first I was quite guarded, for example I did not want to mention the names of people within my life, however gradually I developed more trust as I got to know my facilitator. I was extremely guarded during the assessment process and I found it difficult to let go of any information.

Further down the line my trust improved and I felt my facilitator was listening. The assessment process was

hard for me as I was having to look at things which gave me a lot of anxiety, but as I continued the programme I started to feel more relaxed.

I feel my programme provided me with the right level of support. At the beginning it seemed like a massive road ahead, however now I think it was the right amount of input for me.

#### Go for it!

I found the sessions helpful, especially when looking at different behaviours and thinking about responses. I also found skills such as relaxation techniques, breathing exercises, distraction and how to manage excessive rumination helpful, especially when it came to managing my anxiety.

By completing the programme via video conferencing I have also improved my computer skills. I am no longer as emotional as I was before and I'm looking after myself a lot better.

I can now recognise bad relationships and I know that I do not want to be in an abusive relationship again. I also have boundaries, I know what to put up with and that I can walk away if I want to. My son is still controlling, however I can now stand up for myself.

For people who are considering making a referral, I would say "go for it," even if you feel like you're completely lost or like you're walking through treacle. They have your

best interests at heart and they will do everything they can to help you. You will be amazed, it's like a flower starting to open. Just go with it."

This project is made possible thanks to funding from Portsmouth City Council and Hampshire County Council.







**Advice line: 0330 0533 630**

Always dial 999 if you are in immediate danger or in an emergency.



Registered with  
**FUNDRAISING  
REGULATOR**



federation of england



## Contact Us

### By phone

Call us on 023 9200 8329

### By email:

[info@stopdomesticabuse.uk](mailto:info@stopdomesticabuse.uk)



### Through Social Media:

@southerndas

#stopdomesticabuse

[stopdomesticabuse.uk](http://stopdomesticabuse.uk)

We  
need  
to talk

**STOP  
DOMESTIC  
ABUSE**

Stop Domestic Abuse supports and protects victims and survivors of domestic abuse. We provide a range of flexible and accessible services across Hampshire. We help perpetrators, the police and other agencies.

**Our vision is a world without domestic abuse**

Stop Domestic Abuse is the trading name of Southern Domestic Abuse Service  
Registered Charity Number 1146773.



Charity registration number 1146773

Company registration number 07975563 (England and Wales)

**SOUTHERN DOMESTIC ABUSE SERVICE**  
**ANNUAL REPORT AND FINANCIAL STATEMENTS**  
**FOR THE YEAR ENDED 31 MARCH 2022**



# SOUTHERN DOMESTIC ABUSE SERVICE

## LEGAL AND ADMINISTRATIVE INFORMATION

---

<b>Trustees</b>	G Butler (Chair)	
	J Munday	
	W Osgood (Vice Chair)	
	M Poil	
	S Walker	
	C Godwin	
	L Watkin	(Appointed 11 October 2021)
	T Stakes	(Appointed 20 July 2022)
<b>Secretary</b>	J Munday	
<b>Charity number</b>	1146773	
<b>Company number</b>	07975563	
<b>Principal address</b>	PO Box 53 Havant Hampshire PO9 1UA	
<b>Registered office</b>	Piper House 4 Dukes Court Bognor Road Chichester West Sussex PO19 8FX	
<b>Auditor</b>	Jones Avens Limited Piper House 4 Dukes Court Bognor Road Chichester West Sussex PO19 8FX	
<b>Bankers</b>	Lloyds TSB 272 London Road Waterlooville Hampshire PO7 7HN	

---



# SOUTHERN DOMESTIC ABUSE SERVICE

## CONTENTS

---

	<b>Page</b>
Trustees' report	1 - 5
Statement of trustees' responsibilities	6
Independent auditor's report	7 - 10
Statement of financial activities	11
Balance sheet	12 - 13
Statement of cash flows	14
Notes to the financial statements	15 - 31

---



# **SOUTHERN DOMESTIC ABUSE SERVICE**

## **TRUSTEES' REPORT (INCLUDING DIRECTORS' REPORT) FOR THE YEAR ENDED 31 MARCH 2022**

---

The trustees present their annual report and financial statements for the year ended 31 March 2022.

The financial statements have been prepared in accordance with the accounting policies set out in note 1 to the financial statements and comply with the charity's Memorandum and Articles of Association, the Companies Act 2006 and "Accounting and Reporting by Charities: Statement of Recommended Practice applicable to charities preparing their accounts in accordance with the Financial Reporting Standard applicable in the UK and Republic of Ireland (FRS 102)" (as amended for accounting periods commencing from 1 January 2019)

### **Objectives and activities**

Southern Domestic Abuse Service trading as Stop Domestic Abuse is a charity providing services to women, children, young people and men affected by domestic abuse in the pan-Hampshire area.

The organisation was originally set up in 1977 as Havant Women's Aid by a group of local women who realised that local statutory agencies were failing to meet the needs of women and children experiencing domestic abuse. Southern Domestic Abuse Service was established in 2012. In November 2018 we re-branded to Stop Domestic Abuse (trading name of Southern Domestic Abuse Service). Our branding defines the purpose of the organisation. Our message creates a powerful emotional connection between our organisation, those affected by domestic abuse and the wider public. We want to make our purpose clearer and bring domestic abuse out into the open. We want to stop domestic abuse and we aim to do this by campaigning and delivering direct services to those affected by domestic abuse.

Our name reflects that our services are truly inclusive to all. However, we still recognise that many of our service users are disadvantaged due to gender disadvantage - women are more likely than men to experience abuse, among people subject to 4 or more incidents of abuse 89% are women and the majority (73%) of family violence victims are females (WAFE 2012). We are a registered charity and company limited by guarantee. We are a member of the Women's Aid Federation of England and the organisation is managed by a board of Trustees made up of women that have a wealth of experience and knowledge.

Our vision is a world without domestic abuse.

Services include:

- Refuge accommodation
- Safe accommodation
- Outreach and Resettlement Service
- Young People and Children's Service
- Independent Domestic Violence Advocate Service
- Hampshire Advice Line
- Southampton Prevention Intervention and Public Protection Alliance (PiPPA)
- Portsmouth Single Point of Contact (SPOC) Advice Line
- Group work for young people and children
- Individual tailored advice for women, children, young people and men focusing on their current risks and options for safety
- Women only group work
- Perpetrator Programme
- Group Work for families
- IRIS (Identification & Referral to Improve Safety)
- Holiday activities
- Tailored workshops
- Website
- Female Genital Mutilation, Harmful Cultural Practices Community Work and development
- Domestic Abuse preventative work, awareness raising and training services
- Domestic Abuse Health Advocates
- Target Hardening

The trustees have paid due regard to guidance issued by the Charity Commission in deciding what activities the charity should undertake.



# **SOUTHERN DOMESTIC ABUSE SERVICE**

## **TRUSTEES' REPORT (INCLUDING DIRECTORS' REPORT) (CONTINUED)**

### ***FOR THE YEAR ENDED 31 MARCH 2022***

---

We remain committed to both the continuation of existing services and the development of new services. Stop Domestic Abuse recognises the need to grow, adapt and develop service delivery as a response to the changing needs of those who access the service and to the ever-changing economic climate and funding opportunities. We will continue to focus our limited resources to target women and children. New service development will encompass preventative work with families including work with perpetrators. Organisational growth must strengthen the organisation and benefit the communities we serve in accordance with our core values.

In April 2011 Stop Domestic Abuse started delivering services in East Hampshire District.

In April 2011 Stop Domestic Abuse started delivering community-based services to male victims of domestic abuse.

In April 2015 Stop Domestic Abuse secured the Hampshire County Council Integrated Domestic Abuse Service Hampshire (IDASH) contract to deliver community and accommodation-based services in Fareham, Gosport, Havant and East Hampshire.

In April 2015 Stop Domestic Abuse started a new partnership with Portsmouth City Council to deliver support to the non-abusive partners and the children of perpetrators attending the Up2U service in Fareham, Gosport, Havant and Portsmouth.

In April 2016 Stop Domestic Abuse started working with perpetrators of domestic abuse in Fareham, Gosport, Havant and Portsmouth through our continued partnership with Portsmouth City Council's Up2U Service.

In May 2017 Stop Domestic Abuse purchased its first property which provides dispersed safe accommodation and also provides the organisation with a capital asset.

In April 2018 Stop Domestic Abuse started delivering the Portsmouth City Council and Office of the Police Crime Commissioner commissioned refuge (3 refuges with a total of 16 family bed-spaces) and medium risk community-based services in Portsmouth.

In April 2019 Stop Domestic Abuse started delivering the Hampshire County Council and Office of the Police Crime Commissioner commissioned Hampshire Domestic Abuse Service victim and advice line contract in all 11 Hampshire districts in partnership with our sub-contractor Andover Crisis Support Centre in The Test Valley. This contract includes 92 family bed-spaces across 13 refuges (one of which is delivered by with our sub-contractor Andover Crisis Support Centre in The Test Valley).

In July 2020 Stop Domestic Abuse opened a 5-bedroom refuge in Portsmouth in response to the COVID-19 pandemic.

In July 2021 Stop Domestic Abuse began a new commissioned service in Portsmouth to support victims and survivors of domestic abuse, children and young people affected by domestic abuse and people who use unhealthy and abusive behaviours and are committed to change. The service was re-commissioned by Portsmouth City Council and the Hampshire and Isle of Wight Police and Crime Commissioner and is testament to the quality of our service provision.

In July 2022 Stop Domestic Abuse began a new commissioned service in Southampton to support victims and survivors of domestic abuse and children and young people affected by domestic abuse. The service was commissioned by Southampton City Council and the Hampshire and Isle of Wight Police and Crime Commissioner. This contract includes 12 family bed-spaces across 2 refuges (one of which we newly opened on 1 July 2022). We work with our partners and sub-contractors Yellow Door and No Limits to deliver this contract to victims and survivors in Southampton.



# **SOUTHERN DOMESTIC ABUSE SERVICE**

## **TRUSTEES' REPORT (INCLUDING DIRECTORS' REPORT) (CONTINUED)**

### **FOR THE YEAR ENDED 31 MARCH 2022**

---

#### **Achievements and performance**

In 2021/2022 Stop Domestic Abuse worked with a total of 3,744 adults (40% increase compared to last year 2020/2021) and 1,477 children and young people.

This included:

- 350 women and 435 children and young people who lived in a Stop Domestic Abuse Refuge
- 2,348 adult victims/survivors (20% increase on 2020/2022) and 1,233 children and young people that received one-to-one support in the community
- 649 women and 35 children and young people (schools were still reluctant to do group activities mixing children from different classes) that attended one of our group programmes
- 273 perpetrators who were supported to change their abusive behaviours
- 48 women, children, young people and men that had experienced Harmful Cultural Practices including Honour Based Violence and Female Genital Mutilation
- 109 victims/survivors engaged in a behaviour change programme to unpick unhealthy coping strategies.
- 115 victims/survivors received additional one-to-one support to improve their mental health
- 389 victims/survivors received target hardening to improve their safety at home
- In addition to direct support provided to individuals, our Advice Line Team responded to nearly 11,000 calls for advice and support.

#### **Training**

We continue to provide training including, Domestic Abuse Awareness, DASH (Domestic Abuse, Stalking, Harassment and Honour Based Violence) Risk Assessments, Female Genital Mutilation/Harmful Cultural Practices etc. to a number of organisations including HomeStart, Health Professionals, Education, Adult Social Care, Children's Social Care, Solent Mind, Hampshire Constabulary, Abri Housing etc. We work in partnership with other organisations to commission local domestic abuse training for professionals.

We also provide initial domestic abuse awareness training and, as part of Safe Lives Domestic Abuse Matters Training, we provide intensive domestic abuse training to all serving officers and staff of Hampshire Constabulary. We also deliver Webinars for Recognising Domestic Abuse Affecting Older People, Economic Abuse, Domestic Abuse and Children, Adolescent to Parent Violence, Healthy Homes, Post-Separation Abuse and online workshops for Harmful Cultural practices.

Over the past year we have delivered certified "Safe at Home" domestic abuse training online to individuals working in the health and beauty industry and Hampshire Libraries. We have so far trained over 214 individuals to become certified Safe At Home Domestic Abuse Ambassadors.

#### **COVID-19 Pandemic**

The first six months of the year remained affected by the pandemic and Government restrictions. They exacerbated the impact of domestic abuse on our clients and had an impact on the way we delivered our services. Commissioners provided high levels of support and additional funding was made available to tackle emergency staffing issues and invest in resources (IT, PPE).

Stop Domestic Abuse continued to operate all of our services. All referral pathways for our services remained open and included COVID-19 specific assessments.

Stop Domestic Abuse followed Government and Public Health guidelines to keep everyone as safe as possible. A hybrid service delivery model has been successfully implemented across all our services ensuring clients can engage in person and remotely according to their particular needs and preference.

As restrictions eased (children returned to school, clients gradually migrated back to in-person contact with our teams), we saw a 34% increase in adult clients assessed as 'high risk'. Similarly, during the period, the number of children assessed as at risk of continuing harm by Children's Social Care has increased by 26%. Our front line teams reported heightened incidents of abuse coupled with increased incidence of unhealthy coping mechanisms adopted by clients.

We sought additional funding to help us respond to the increased need for support. Hampshire County Council (HCC), OPCC and Trusts / Foundations responded with significant levels of funding and partnership support.



# **SOUTHERN DOMESTIC ABUSE SERVICE**

## **TRUSTEES' REPORT (INCLUDING DIRECTORS' REPORT) (CONTINUED)**

### **FOR THE YEAR ENDED 31 MARCH 2022**

---

We saw a surge in demand for our children's services as schools reopened and children returned to school and community settings. We have been pleased to work in partnership with Hampshire Constabulary to deliver workshops in schools on healthy relationships across Hampshire, Portsmouth and Isle of Wight (working with our partners Wight DASH and Andover Crisis and Support Centre) and with Portsmouth City Council and the Office of the Police Crime Commissioner to deliver the Mentors in Violence Project and look forward to extending the reach of this project to include Fareham, Gosport and Havant over the next eighteen months.

The cost of living crisis has presented and will continue to present increased challenges to our clients, we have introduced initiatives to provide them with emergency support.

Research by Women's Aid shows that the cost of living is adding to the pressures survivors face and is preventing women from fleeing domestic abuse. We are engaging with national and local agencies to raise awareness of the need for an Emergency Domestic Abuse Fund to help survivors of domestic abuse to pay for essential items and energy bills; together with better provision of legal services for survivors who are unable to afford legal representation and advice. We have accessed emergency funding from Hampshire County Council and other funders to help clients with rising fuel and food costs, and we will continue to provide bespoke packages of support to the women and children staying in our refuges, as well as to our clients remaining in their homes through this crisis period.

#### **Funding**

Stop Domestic Abuse is funded primarily through Hampshire County Council, Portsmouth City Council, Southampton City Council and The Office of the Police Crime Commissioner commissioning of domestic abuse services, the rent we charge, grants/contracts from such organisations as The National Lottery Community Fund, National Lottery Awards For All, BBC Children In Need, Department for Levelling Up, Housing & Communities, the Home Office, Ministry of Justice and other grant funding.

Prudent financial monitoring, active fundraising and rental income has resulted in a year-end surplus. This surplus will be used to ensure that we have adequate reserves and capital for our future ambitions and to develop innovative new projects and continue providing non-commissioned and under-resourced services such as work with children and young people and migrant women/women with no recourse to public funds.

We also continue to receive support and donations from local individuals, companies, groups and associations. This support is invaluable, and we use the donations to provide the important extras that improve the quality of life for the women, children, young people and men using our services. Our thanks go to those who have supported us through giving time, money or donations and to our partners who ensure that together we can offer the highest quality support to victims and survivors of domestic abuse.

#### **Financial review**

The statement of financial activities summarises the charity's financial results for the year, a surplus having been generated as referred to above. We have generated an increased surplus in the year and this surplus will be used to continue to deliver under resourced projects including support services in refuge, work with children, community based support to women and men affected by domestic abuse and to pilot new innovations in domestic abuse services.

The trustees have set a reserves policy which requires:

- Reserves be maintained at a level which ensures that Stop Domestic Abuse's core activities can continue during a period of unforeseen difficulty.
- A proportion of reserves be maintained in a readily realisable form.

It is the policy of the charity that unrestricted funds which have not been designated for a specific use should be maintained at a level equivalent to between three and six month's expenditure. The charity aims to achieve reserves equivalent of a minimum of six months running costs. The trustees consider that reserves at this level will ensure that, in the event of a significant drop in funding, they will be able to continue the charity's current activities while consideration is given to ways in which additional funds may be raised. This level of reserves has been maintained throughout the year.

The trustees have assessed the major risks to which the charity is exposed, and are satisfied that systems are in place to mitigate exposure to the major risks.



# SOUTHERN DOMESTIC ABUSE SERVICE

## TRUSTEES' REPORT (INCLUDING DIRECTORS' REPORT) (CONTINUED) FOR THE YEAR ENDED 31 MARCH 2022

---

### Structure, governance and management

The charity is a company limited by guarantee incorporated under the Companies Act 2006 on 5 March 2012 and is a registered charity (number 1146773), registered on 3 April 2012. It commenced activities on 1 July 2012, taking over the services previously carried out by Havant Womens Aid (charity number 273775).

The trustees, who are also the directors for the purpose of company law, and who served during the year and up to the date of signature of the financial statements were:

G Butler (Chair)	
J Munday	
W Osgood (Vice Chair)	
S Lee	(Resigned 10 November 2021)
M Poil	
D Cullimore	(Resigned 14 June 2021)
S Walker	
C Godwin	
L Watkin	(Appointed 11 October 2021)
T Stakes	(Appointed 20 July 2022)

The skills of Trustees are reviewed to identify any gaps in skills. Stop Domestic Abuse recognises that an effective board of trustees is essential if the charity is to be effective in achieving its objects. The board seeks to be representative of the people with whom the charity works and must have available to it all of the knowledge and skills required to run the charity. Individual trustees must have sufficient knowledge, both of trusteeship in general and of the Charity's activities, to enable them to carry out their role and to represent the Charity at meetings and other events.

When recruiting trustees a skills audit of the board is completed to ensure that there are no skills gaps. Recruitment takes place within the wider community including advertisements and direct approaches to professional bodies and to other voluntary organizations. Stop Domestic Abuse seeks to ensure diversity in its board of trustees as well as in its staff base and consideration will be given to ways in which groups that are under-represented on the board might be reached and encouraged to apply. Applicants who appear suitable are interviewed by two existing trustees and the CEO.

None of the trustees has any beneficial interest in the company. All of the trustees are members of the company and guarantee to contribute £1 in the event of a winding up.

The charity is governed by an executive committee who have the power to co-opt additional members. They are unpaid and act as trustees of the charity. The trustees have assessed the major risks to which the charity is exposed, and are satisfied that systems are in place to mitigate exposure to the major risks.

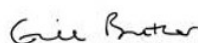
### Asset cover for funds

Note 23 sets out an analysis of the assets attributable to the various funds and a description of the trusts. These assets are sufficient to meet the charities obligations on a fund by fund basis.

### Auditor

In accordance with the company's articles, a resolution proposing that Jones Avens Limited be reappointed as auditor of the company will be put at a General Meeting.

The trustees' report was approved by the Board of Trustees.



**G Butler (Chair)**

Trustee

Dated: 14th November 2022



# **SOUTHERN DOMESTIC ABUSE SERVICE**

## **STATEMENT OF TRUSTEES' RESPONSIBILITIES**

***FOR THE YEAR ENDED 31 MARCH 2022***

---

The trustees, who are also the directors of Southern Domestic Abuse Service for the purpose of company law, are responsible for preparing the Trustees' Report and the financial statements in accordance with applicable law and United Kingdom Accounting Standards (United Kingdom Generally Accepted Accounting Practice).

Company Law requires the trustees to prepare financial statements for each financial year which give a true and fair view of the state of affairs of the charity and of the incoming resources and application of resources, including the income and expenditure, of the charitable company for that year.

In preparing these financial statements, the trustees are required to:

- select suitable accounting policies and then apply them consistently;
- observe the methods and principles in the Charities SORP;
- make judgements and estimates that are reasonable and prudent;
- state whether applicable UK Accounting Standards have been followed, subject to any material departures disclosed and explained in the financial statements; and
- prepare the financial statements on the going concern basis unless it is inappropriate to presume that the charity will continue in operation.

The trustees are responsible for keeping adequate accounting records that disclose with reasonable accuracy at any time the financial position of the charity and enable them to ensure that the financial statements comply with the Companies Act 2006. They are also responsible for safeguarding the assets of the charity and hence for taking reasonable steps for the prevention and detection of fraud and other irregularities.



# **SOUTHERN DOMESTIC ABUSE SERVICE**

## **INDEPENDENT AUDITOR'S REPORT**

### **TO THE TRUSTEES OF SOUTHERN DOMESTIC ABUSE SERVICE**

---

#### **Opinion**

We have audited the financial statements of Southern Domestic Abuse Service (the 'charity') for the year ended 31 March 2022 which comprise the statement of financial activities, the balance sheet, the statement of cash flows and the notes to the financial statements, including a summary of significant accounting policies. The financial reporting framework that has been applied in their preparation is applicable law and United Kingdom Accounting Standards, including Financial Reporting Standard 102 *The Financial Reporting Standard applicable in the UK and Republic of Ireland* (United Kingdom Generally Accepted Accounting Practice).

In our opinion, the financial statements:

- give a true and fair view of the state of the charitable company's affairs as at 31 March 2022 and of its incoming resources and application of resources, for the year then ended;
- have been properly prepared in accordance with United Kingdom Generally Accepted Accounting Practice; and
- have been prepared in accordance with the requirements of the Companies Act 2006.

#### **Basis for opinion**

We conducted our audit in accordance with International Standards on Auditing (UK) (ISAs (UK)) and applicable law. Our responsibilities under those standards are further described in the *Auditor's responsibilities for the audit of the financial statements* section of our report. We are independent of the charity in accordance with the ethical requirements that are relevant to our audit of the financial statements in the UK, including the FRC's Ethical Standard, and we have fulfilled our other ethical responsibilities in accordance with these requirements. We believe that the audit evidence we have obtained is sufficient and appropriate to provide a basis for our opinion.

#### **Conclusions relating to going concern**

In auditing the financial statements, we have concluded that the trustees' use of the going concern basis of accounting in the preparation of the financial statements is appropriate.

Based on the work we have performed, we have not identified any material uncertainties relating to events or conditions that, individually or collectively, may cast significant doubt on the charity's ability to continue as a going concern for a period of at least twelve months from when the financial statements are authorised for issue.

Our responsibilities and the responsibilities of the trustees with respect to going concern are described in the relevant sections of this report.

#### **Other information**

The trustees are responsible for the other information. The other information comprises the information included in the annual report, other than the financial statements and our auditor's report thereon. Our opinion on the financial statements does not cover the other information and we do not express any form of assurance conclusion thereon.

In connection with our audit of the financial statements, our responsibility is to read the other information and, in doing so, consider whether the other information is materially inconsistent with the financial statements or our knowledge obtained in the audit or otherwise appears to be materially misstated. If we identify such material inconsistencies or apparent material misstatements, we are required to determine whether there is a material misstatement in the financial statements or a material misstatement of the other information. If, based on the work we have performed, we conclude that there is a material misstatement of this other information, we are required to report that fact. We have nothing to report in this regard.

#### **Matters on which we are required to report by exception**

We have nothing to report in respect of the following matters in relation to which the Charities (Accounts and Reports) Regulations 2008 require us to report to you if, in our opinion:

- the information given in the financial statements is inconsistent in any material respect with the trustees' report; or
- sufficient accounting records have not been kept; or
- the financial statements are not in agreement with the accounting records; or
- we have not received all the information and explanations we require for our audit.

# **SOUTHERN DOMESTIC ABUSE SERVICE**

## **INDEPENDENT AUDITOR'S REPORT (CONTINUED)**

### **TO THE TRUSTEES OF SOUTHERN DOMESTIC ABUSE SERVICE**

---

#### **Responsibilities of trustees**

As explained more fully in the statement of trustees' responsibilities, the trustees, who are also the directors of the charity for the purpose of company law, are responsible for the preparation of the financial statements and for being satisfied that they give a true and fair view, and for such internal control as the trustees determine is necessary to enable the preparation of financial statements that are free from material misstatement, whether due to fraud or error. In preparing the financial statements, the trustees are responsible for assessing the charity's ability to continue as a going concern, disclosing, as applicable, matters related to going concern and using the going concern basis of accounting unless the trustees either intend to liquidate the charitable company or to cease operations, or have no realistic alternative but to do so.

#### **Auditor's responsibilities for the audit of the financial statements**

We have been appointed as auditor under section 144 of the Charities Act 2011 and report in accordance with the Act and relevant regulations made or having effect thereunder.

Our objectives are to obtain reasonable assurance about whether the financial statements as a whole are free from material misstatement, whether due to fraud or error, and to issue an auditor's report that includes our opinion. Reasonable assurance is a high level of assurance but is not a guarantee that an audit conducted in accordance with ISAs (UK) will always detect a material misstatement when it exists. Misstatements can arise from fraud or error and are considered material if, individually or in the aggregate, they could reasonably be expected to influence the economic decisions of users taken on the basis of these financial statements.

#### **Identification and assessment of irregularities including fraud**

Irregularities, including fraud, are instances of non-compliance with laws and regulations. We designed procedures in line with our responsibilities, outlined above, to detect material misstatements in respect of irregularities, including fraud. The extent to which our procedures were capable of detecting irregularities, including fraud is detailed below:

- we focused on specific laws and regulations which we considered may have a direct material effect on the financial statements or the operations of the charity, including The Companies Act 2006 and The Charities Act 2011;
- we obtained an understanding of the legal and regulatory framework applicable to the entity and how the entity is complying with that framework by making appropriate enquiries of management as well as considering the internal controls in place to mitigate risks of fraud and non-compliance with laws and regulations;
- we made enquiries of those charged with governance and management concerning:
  - the risks of fraud;
  - instances of non-compliance with laws and regulations or knowledge of actual, suspected, or alleged fraud is documented during the period;
- we allocated an engagement team that we considered collectively had the appropriate competence and capabilities to identify or recognise non-compliance with laws and regulations.



# **SOUTHERN DOMESTIC ABUSE SERVICE**

## **INDEPENDENT AUDITOR'S REPORT (CONTINUED)**

### **TO THE TRUSTEES OF SOUTHERN DOMESTIC ABUSE SERVICE**

---

#### **Audit response to the risk of irregularities including fraud**

Based on the results of our risk assessment, our procedures included, but were not limited to:

- performing analytical procedures to identify any unusual or unexpected relationships.
- evaluating whether the selection and application of accounting policies by the entity that may be indicative of fraudulent financial reporting resulting from management's effort to manage earnings.
- assessing whether judgements and assumptions made in determining the accounting estimates set out in note 2 were indicative of potential bias.
- agreeing financial statement disclosures to underlying supporting documentation.
- reading the minutes of meetings of those charged with governance.
- reviewing the correspondence with relevant regulatory bodies.
- testing of journal entries to address the risk of fraud through management override.
- incorporating an element of unpredictability in the selection of the nature, timing, and extent of our audit procedures.

#### **Conclusions regarding the risks of irregularities including fraud**

There are inherent limitations in our audit procedures described above. The more removed that laws and regulations are from financial transactions, the less likely it is that we would become aware of non-compliance.

Material misstatements that arise due to fraud can be harder to detect than those that arise from error as they may involve deliberate concealment or collusion.

We considered our audit was capable of detecting irregularities due to:

- the effectiveness of the entity's internal controls;
- the nature, timing and extent of audit procedures performed; and

the absence of contradictory evidence.

A further description of our responsibilities for the audit of the financial statements is located on the Financial Reporting Council's website at: <http://www.frc.org.uk/auditorsresponsibilities>. This description forms part of our auditor's report.

This report is made solely to the company's members, as a body, in accordance with section 391 of the Companies Act 2014. Our audit work has been undertaken so that we might state to the company's members those matters we are required to state to them in an auditor's report and for no other purpose. To the fullest extent permitted by law, we do not accept or assume responsibility to anyone other than the company and the company's members as a body, for our audit work, for this report, or for the opinions we have formed.



**Claire Norwood BSc FCA ATII (Senior Statutory Auditor)**  
**for and on behalf of Jones Avens Limited**

25/11/2022 .....

**Chartered Accountants**  
**Statutory Auditor**

Piper House  
4 Dukes Court  
Bognor Road  
Chichester  
West Sussex  
PO19 8FX

# **SOUTHERN DOMESTIC ABUSE SERVICE**

## **INDEPENDENT AUDITOR'S REPORT (CONTINUED)**

### **TO THE TRUSTEES OF SOUTHERN DOMESTIC ABUSE SERVICE**

---

Jones Avens Limited is eligible for appointment as auditor of the charity by virtue of its eligibility for appointment as auditor of a company under section 1212 of the Companies Act 2006.



# SOUTHERN DOMESTIC ABUSE SERVICE

## STATEMENT OF FINANCIAL ACTIVITIES INCLUDING INCOME AND EXPENDITURE ACCOUNT

FOR THE YEAR ENDED 31 MARCH 2022

	Notes	Unrestricted funds 2022 £	Restricted funds 2022 £	Total 2022 £	Unrestricted funds 2021 £	Restricted funds 2021 £	Total 2021 £
<b>Income from:</b>							
Donations and legacies	3	90,250	-	90,250	85,906	-	85,906
Charitable activities	4	5,406,430	1,075,672	6,482,102	4,928,249	582,354	5,510,603
Investments	5	489	-	489	1,968	-	1,968
<b>Total income</b>		<b>5,497,169</b>	<b>1,075,672</b>	<b>6,572,841</b>	<b>5,016,123</b>	<b>582,354</b>	<b>5,598,477</b>
<b>Expenditure on:</b>							
Raising funds	6	14,540	-	14,540	2,914	-	2,914
Charitable activities	7	3,617,421	1,037,692	4,655,113	3,447,409	623,075	4,070,484
Pension scheme provision remeasurements	13	(1,875)	-	(1,875)	222	-	222
<b>Total expenditure</b>		<b>3,630,086</b>	<b>1,037,692</b>	<b>4,667,778</b>	<b>3,450,545</b>	<b>623,075</b>	<b>4,073,620</b>
Net gains/(losses) on investments	12	2,426	-	2,426	54,592	-	54,592
<b>Net incoming resources before transfers</b>		<b>1,869,509</b>	<b>37,980</b>	<b>1,907,489</b>	<b>1,620,170</b>	<b>(40,721)</b>	<b>1,579,449</b>
Gross transfers between funds	14	45,315	(45,315)	-	(34,588)	34,588	-
<b>Net movement in funds</b>		<b>1,914,824</b>	<b>(7,335)</b>	<b>1,907,489</b>	<b>1,585,582</b>	<b>(6,133)</b>	<b>1,579,449</b>
Fund balances at 1 April 2021		4,076,177	95,705	4,171,882	2,490,595	101,838	2,592,433
<b>Fund balances at 31 March 2022</b>		<b>5,991,001</b>	<b>88,370</b>	<b>6,079,371</b>	<b>4,076,177</b>	<b>95,705</b>	<b>4,171,882</b>

The statement of financial activities includes all gains and losses recognised in the year.

All income and expenditure derive from continuing activities.

The statement of financial activities also complies with the requirements for an income and expenditure account under the Companies Act 2006.

# SOUTHERN DOMESTIC ABUSE SERVICE

## BALANCE SHEET

AS AT 31 MARCH 2022

	Notes	2022 £	£	2021 £	£
<b>Fixed assets</b>					
Tangible assets	15	213,064		164,953	
Investments	16	342,705		293,914	
			555,769		458,867
<b>Current assets</b>					
Debtors	18	720,234		112,851	
Cash at bank and in hand		5,214,148		4,034,709	
			5,934,382		4,147,560
<b>Creditors: amounts falling due within one year</b>	19	(409,929)		(430,896)	
Net current assets			5,524,453		3,716,664
<b>Total assets less current liabilities</b>			6,080,222		4,175,531
<b>Provisions for liabilities</b>			(851)		(3,649)
<b>Net assets</b>			6,079,371		4,171,882
<b>Income funds</b>					
Restricted funds	23	88,370		95,705	
<u>Unrestricted funds</u>					
Designated funds	24	5,001,013		2,053,953	
General unrestricted funds		989,988		2,022,224	
			5,991,001		4,076,177
			6,079,371		4,171,882



# **SOUTHERN DOMESTIC ABUSE SERVICE**

## **BALANCE SHEET (CONTINUED)**

**AS AT 31 MARCH 2022**

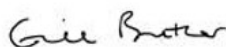
---

The company is entitled to the exemption from the audit requirement contained in section 477 of the Companies Act 2006, for the year ended 31 March 2022, although an audit has been carried out under section 144 of the Charities Act 2011.

The directors acknowledge their responsibilities for complying with the requirements of the Companies Act 2006 with respect to accounting records and the preparation of financial statements.

The members have not required the company to obtain an audit of its financial statements under the requirements of the Companies Act 2006, for the year in question in accordance with section 476.

The financial statements were approved by the Trustees on 14th November 2022



G Butler (Chair)  
**Trustee**

**Company Registration No. 07975563**

# SOUTHERN DOMESTIC ABUSE SERVICE

## STATEMENT OF CASH FLOWS

FOR THE YEAR ENDED 31 MARCH 2022

	Notes	2022 £	£	2021 £	£
<b>Cash flows from operating activities</b>					
Cash generated from operations	29		1,326,349		1,781,086
<b>Investing activities</b>					
Purchase of tangible fixed assets		(101,034)		(45,557)	
Purchase of investments		(319,935)		-	
Proceeds from disposal of investments		273,570		2,887	
Investment income received		489		1,968	
<b>Net cash used in investing activities</b>			(146,910)		(40,702)
<b>Net cash used in financing activities</b>			-		-
<b>Net increase in cash and cash equivalents</b>			1,179,439		1,740,384
Cash and cash equivalents at beginning of year			4,034,709		2,294,325
<b>Cash and cash equivalents at end of year</b>			5,214,148		4,034,709



# SOUTHERN DOMESTIC ABUSE SERVICE

## NOTES TO THE FINANCIAL STATEMENTS

**FOR THE YEAR ENDED 31 MARCH 2022**

---

### **1 Accounting policies**

#### **Charity information**

Southern Domestic Abuse Service is a private company limited by guarantee incorporated in England and Wales. The registered office is Piper House, 4 Dukes Court, Bognor Road, Chichester, West Sussex, PO19 8FX.

#### **1.1 Accounting convention**

The financial statements have been prepared in accordance with the charity's Memorandum and Articles of Association, the Companies Act 2006 and "Accounting and Reporting by Charities: Statement of Recommended Practice applicable to charities preparing their accounts in accordance with the Financial Reporting Standard applicable in the UK and Republic of Ireland (FRS 102)" (as amended for accounting periods commencing from 1 January 2019). The charity is a Public Benefit Entity as defined by FRS 102.

The financial statements are prepared in sterling, which is the functional currency of the charity. Monetary amounts in these financial statements are rounded to the nearest £.

The financial statements have been prepared under the historical cost convention, modified to include the revaluation of certain financial instruments at fair value. The principal accounting policies adopted are set out below.

#### **1.2 Going concern**

At the time of approving the financial statements, the trustees have a reasonable expectation that the charity has adequate resources to continue in operational existence for the foreseeable future. Thus the trustees continue to adopt the going concern basis of accounting in preparing the financial statements.

#### **1.3 Charitable funds**

Unrestricted funds are available for use at the discretion of the trustees in furtherance of their charitable objectives.

Restricted funds are subject to specific conditions by donors as to how they may be used. The purposes and uses of the restricted funds are set out in the notes to the financial statements.

#### **1.4 Income**

Income is recognised when the charity is legally entitled to it after any performance conditions have been met, the amounts can be measured reliably, and it is probable that income will be received.

Cash donations are recognised on receipt. Other donations are recognised once the charity has been notified of the donation, unless performance conditions require deferral of the amount. Income tax recoverable in relation to donations received under Gift Aid or deeds of covenant is recognised at the time of the donation.

Legacies are recognised on receipt or otherwise if the charity has been notified of an impending distribution, the amount is known, and receipt is expected. If the amount is not known, the legacy is treated as a contingent asset.

Turnover is measured at the fair value of the consideration received or receivable and represents amounts receivable for goods and services provided in the normal course of business, net of discounts, VAT and other sales related taxes.

# SOUTHERN DOMESTIC ABUSE SERVICE

## NOTES TO THE FINANCIAL STATEMENTS (CONTINUED)

FOR THE YEAR ENDED 31 MARCH 2022

---

### 1 Accounting policies

(Continued)

#### 1.5 Expenditure

Expenditure is recognised once there is a legal or constructive obligation to transfer economic benefit to a third party, it is probable that a transfer of economic benefits will be required in settlement, and the amount of the obligation can be measured reliably.

Expenditure is classified by activity. The costs of each activity are made up of the total of direct costs and shared costs, including support costs involved in undertaking each activity. Direct costs attributable to a single activity are allocated directly to that activity. Shared costs which contribute to more than one activity and support costs which are not attributable to a single activity are apportioned between those activities on a basis consistent with the use of resources. Central staff costs are allocated on the basis of time spent, and depreciation charges are allocated on the portion of the asset's use.

All expenditure is accounted for on an accruals basis and include attributable VAT which cannot be recovered.

Expenditure is either allocated directly or is apportioned to the individual areas. Funds are transferred from unrestricted funds to fund deficits on restricted areas where no further funding will be forthcoming.

#### 1.6 Tangible fixed assets

Capital items costing more than £1,000 are treated as tangible fixed assets and are initially measured at cost and subsequently measured at cost or valuation, net of depreciation and any impairment losses.

Depreciation is recognised so as to write off the cost or valuation of assets less their residual values over their useful lives on the following bases:

Leasehold property	10% straight line or over the life of the lease
Fixtures, fittings & equipment	33 1/3% straight line basis

The gain or loss arising on the disposal of an asset is determined as the difference between the sale proceeds and the carrying value of the asset, and is recognised in the statement of financial activities.

#### 1.7 Fixed asset investments

Fixed asset investments are initially measured at transaction price excluding transaction costs, and are subsequently measured at fair value at each reporting date. Changes in fair value are recognised in net income/(expenditure) for the year. Transaction costs are expensed as incurred.

#### 1.8 Impairment of fixed assets

At each reporting end date, the charity reviews the carrying amounts of its tangible assets to determine whether there is any indication that those assets have suffered an impairment loss. If any such indication exists, the recoverable amount of the asset is estimated in order to determine the extent of the impairment loss (if any).

#### 1.9 Cash and cash equivalents

Cash and cash equivalents include cash in hand, deposits held at call with banks, other short-term liquid investments with original maturities of three months or less, and bank overdrafts. Bank overdrafts are shown within borrowings in current liabilities.

# SOUTHERN DOMESTIC ABUSE SERVICE

## NOTES TO THE FINANCIAL STATEMENTS (CONTINUED) FOR THE YEAR ENDED 31 MARCH 2022

---

### 1 Accounting policies

(Continued)

#### 1.10 Financial instruments

The charity has elected to apply the provisions of Section 11 'Basic Financial Instruments' and Section 12 'Other Financial Instruments Issues' of FRS 102 to all of its financial instruments.

Financial instruments are recognised in the charity's balance sheet when the charity becomes party to the contractual provisions of the instrument.

Financial assets and liabilities are offset, with the net amounts presented in the financial statements, when there is a legally enforceable right to set off the recognised amounts and there is an intention to settle on a net basis or to realise the asset and settle the liability simultaneously.

##### **Basic financial assets**

Basic financial assets, which include debtors and cash and bank balances, are initially measured at transaction price including transaction costs and are subsequently carried at amortised cost using the effective interest method unless the arrangement constitutes a financing transaction, where the transaction is measured at the present value of the future receipts discounted at a market rate of interest. Financial assets classified as receivable within one year are not amortised.

##### **Basic financial liabilities**

Basic financial liabilities, including creditors and bank loans are initially recognised at transaction price unless the arrangement constitutes a financing transaction, where the debt instrument is measured at the present value of the future payments discounted at a market rate of interest. Financial liabilities classified as payable within one year are not amortised.

Debt instruments are subsequently carried at amortised cost, using the effective interest rate method.

Trade creditors are obligations to pay for goods or services that have been acquired in the ordinary course of operations from suppliers. Amounts payable are classified as current liabilities if payment is due within one year or less. If not, they are presented as non-current liabilities. Trade creditors are recognised initially at transaction price and subsequently measured at amortised cost using the effective interest method.

##### **Derecognition of financial liabilities**

Financial liabilities are derecognised when the charity's contractual obligations expire or are discharged or cancelled.

#### 1.11 Provisions

Provisions are recognised when the charity has a legal or constructive present obligation as a result of a past event, it is probable that the charity will be required to settle that obligation and a reliable estimate can be made of the amount of the obligation.

The amount recognised as a provision is the best estimate of the consideration required to settle the present obligation at the reporting end date, taking into account the risks and uncertainties surrounding the obligation. Where the effect of the time value of money is material, the amount expected to be required to settle the obligation is recognised at present value. When a provision is measured at present value, the unwinding of the discount is recognised as a finance cost in net income/(expenditure) in the period in which it arises.

#### 1.12 Employee benefits

The cost of any unused holiday entitlement is recognised in the period in which the employee's services are received.

Termination benefits are recognised immediately as an expense when the charity is demonstrably committed to terminate the employment of an employee or to provide termination benefits.



# SOUTHERN DOMESTIC ABUSE SERVICE

## NOTES TO THE FINANCIAL STATEMENTS (CONTINUED) FOR THE YEAR ENDED 31 MARCH 2022

---

### 1 Accounting policies (Continued)

#### 1.13 Retirement benefits

Payments to defined contribution retirement benefit schemes are charged as an expense as they fall due.

#### 1.14 Taxation

On the basis of the financial statements no provision has been made for Corporation Tax.

### 2 Critical accounting estimates and judgements

In the application of the charity's accounting policies, the trustees are required to make judgements, estimates and assumptions about the carrying amount of assets and liabilities that are not readily apparent from other sources. The estimates and associated assumptions are based on historical experience and other factors that are considered to be relevant. Actual results may differ from these estimates.

The estimates and underlying assumptions are reviewed on an ongoing basis. Revisions to accounting estimates are recognised in the period in which the estimate is revised where the revision affects only that period, or in the period of the revision and future periods where the revision affects both current and future periods.

#### Critical judgements

#### Pension scheme deficit payments

The association participates in a multi-employer pension scheme which is in deficit. Provision has been made for the deficit contributions payable and the trustee have relied upon the information received from the Pensions Trust.

### 3 Donations and legacies

	Unrestricted funds	Unrestricted funds
	2022	2021
	£	£
Donations and gifts	90,250	85,906

# SOUTHERN DOMESTIC ABUSE SERVICE

## NOTES TO THE FINANCIAL STATEMENTS (CONTINUED) FOR THE YEAR ENDED 31 MARCH 2022

### 4 Charitable activities

	Family and child projects 2022 £	Managed hostel 2022 £	Total 2022 £	Family and child projects 2021 £	Managed hostel 2021 £	Total 2021 £
Charitable rental income	-	1,452,833	1,452,833	-	1,150,769	1,150,769
Services provided under contract	3,605,333	229,110	3,834,443	2,021,644	452,626	2,474,270
Performance related grants	1,129,096	2,720	1,131,816	1,804,472	21,000	1,825,472
Other income	63,010	-	63,010	60,092	-	60,092
	<u>4,797,439</u>	<u>1,684,663</u>	<u>6,482,102</u>	<u>3,886,208</u>	<u>1,624,395</u>	<u>5,510,603</u>
Analysis by fund						
Unrestricted funds	3,721,767	1,684,663	5,406,430	3,313,854	1,614,395	4,928,249
Restricted funds	1,075,672	-	1,075,672	572,354	10,000	582,354
	<u>4,797,439</u>	<u>1,684,663</u>	<u>6,482,102</u>	<u>3,886,208</u>	<u>1,624,395</u>	<u>5,510,603</u>

### 5 Investments

	Unrestricted funds 2022 £	Unrestricted funds 2021 £
Interest receivable	<u>489</u>	<u>1,968</u>

### 6 Raising funds

	Unrestricted funds 2022 £	Unrestricted funds 2021 £
<u>Fundraising and publicity</u>		
Fundraising agents	758	-
Advertising	9,810	-
Other fundraising costs	324	-
	<u>10,892</u>	<u>-</u>
<u>Investment management</u>	<u>3,648</u>	<u>2,914</u>

# SOUTHERN DOMESTIC ABUSE SERVICE

## NOTES TO THE FINANCIAL STATEMENTS (CONTINUED) FOR THE YEAR ENDED 31 MARCH 2022

### 6 Raising funds

(Continued)

14,540	2,914
--------	-------

### 7 Charitable activities

	Family and child projects 2022 £	Managed hostel 2022 £	Total 2022 £	Family and child projects 2021 £	Managed hostel 2021 £	Total 2021 £
Staff costs	2,340,900	145,790	2,486,690	1,881,954	371,777	2,253,731
Depreciation and impairment	-	6,424	6,424	-	3,910	3,910
Premises expenses	32,988	736,263	769,251	65,647	681,950	747,597
Travelling & subsistence	38,168	1,200	39,368	15,527	3,170	18,697
Administration & office expenses	62,729	4,600	67,329	7,619	8,802	16,421
Activities & training etc	47,478	2,235	49,713	94,521	5,018	99,539
Other expenses	38,330	2,186	40,516	52,977	4,459	57,436
	2,560,593	898,698	3,459,291	2,118,245	1,079,086	3,197,331
Grant funding of activities (see note 8)	223,465	-	223,465	191,522	-	191,522
Share of support costs (see note 9)	829,553	91,595	921,148	570,862	11,633	582,495
Share of governance costs (see note 9)	46,162	5,047	51,209	97,156	1,980	99,136
	3,659,773	995,340	4,655,113	2,977,785	1,092,699	4,070,484
<b>Analysis by fund</b>						
Unrestricted funds	2,622,081	995,340	3,617,421	2,354,710	1,092,699	3,447,409
Restricted funds	1,037,692	-	1,037,692	623,075	-	623,075
	3,659,773	995,340	4,655,113	2,977,785	1,092,699	4,070,484

### 8 Grants payable

	Family and child projects 2022 £	Family and child projects 2021 £
Grants to institutions:		
Other	223,465	191,522



# SOUTHERN DOMESTIC ABUSE SERVICE

## NOTES TO THE ACCOUNTS

### FOR THE YEAR ENDED 31 MARCH 2022

#### 9 Support costs

	Support costs £	Governance costs £	2022 £	Support costs £	Governance costs £	2021 £
Staff costs	532,704	-	532,704	347,001	-	347,001
Depreciation	46,499	-	46,499	29,915	-	29,915
Premises expenses	47,424	-	47,424	54,358	-	54,358
Travelling & subsistence	1,467	-	1,467	268	-	268
Administration & office expenses	209,245	-	209,245	83,591	-	83,591
Activities & training etc	60,336	-	60,336	20,986	-	20,986
Other expenses	23,473	-	23,473	46,376	-	46,376
Audit fees	-	8,206	8,206	-	5,735	5,735
Accountancy	-	-	-	-	1,560	1,560
Legal and professional	-	41,553	41,553	-	91,643	91,643
Other governance costs	-	1,450	1,450	-	198	198
	<u>921,148</u>	<u>51,209</u>	<u>972,357</u>	<u>582,495</u>	<u>99,136</u>	<u>681,631</u>
Analysed between						
Charitable activities	<u>921,148</u>	<u>51,209</u>	<u>972,357</u>	<u>582,495</u>	<u>99,136</u>	<u>681,631</u>

Governance costs includes payments to the auditors of £8,206 for audit fees and £0 for other services.

#### 10 Trustees

None of the trustees (or any persons connected with them) received any remuneration or benefits from the charity during the year.

#### 11 Employees

The average monthly number of employees during the year was:

	2022 Number	2021 Number
Project staff	109	89
Management and administration	13	18
Total	<u>122</u>	<u>107</u>

# SOUTHERN DOMESTIC ABUSE SERVICE

## NOTES TO THE ACCOUNTS (CONTINUED) FOR THE YEAR ENDED 31 MARCH 2022

### 11 Employees (Continued)

Employment costs	2022 £	2021 £
Wages and salaries	2,709,350	2,338,209
Social security costs	233,596	194,284
Other pension costs	76,448	68,239
	<u>3,019,394</u>	<u>2,600,732</u>

The above numbers include job share, part time and sessional staff, the average number of full time equivalent staff was 108 (2021: 93).

The number of employees whose annual remuneration was more than £60,000 is as follows:

	2022 Number	2021 Number
£60,000 - £70,000	-	1
£110,000 - £120,000	1	-
	<u>1</u>	<u>-</u>

### 12 Net gains/(losses) on investments

	Unrestricted funds 2022 £	Unrestricted funds 2021 £
Revaluation of investments	<u>2,426</u>	<u>54,592</u>

### 13 Pension scheme provision remeasurements

	2022 £	2021 £
Impact of changes in assumptions	(20)	125
Amendments to contribution schedule	(1,876)	-
Financing costs	21	97
	<u>(1,875)</u>	<u>222</u>

# SOUTHERN DOMESTIC ABUSE SERVICE

## NOTES TO THE ACCOUNTS (CONTINUED) FOR THE YEAR ENDED 31 MARCH 2022

### 14 Transfers

The transfer between restricted and unrestricted funds represents income received in arrears for a project undertaken in the previous financial year. The total amount is not considered material to the financial statements.

### 15 Tangible fixed assets

	Leasehold property	Fixtures, fittings & equipment	Total
	£	£	£
<b>Cost</b>			
At 1 April 2021	135,559	188,517	324,076
Additions	-	101,034	101,034
	<u>135,559</u>	<u>289,551</u>	<u>425,110</u>
At 31 March 2022	135,559	289,551	425,110
<b>Depreciation and impairment</b>			
At 1 April 2021	7,064	152,058	159,122
Depreciation charged in the year	880	52,044	52,924
	<u>7,944</u>	<u>204,102</u>	<u>212,046</u>
At 31 March 2022	7,944	204,102	212,046
<b>Carrying amount</b>			
At 31 March 2022	<u>127,615</u>	<u>85,449</u>	<u>213,064</u>
At 31 March 2021	<u>128,495</u>	<u>36,458</u>	<u>164,953</u>

### 16 Fixed asset investments

	Listed investments £
<b>Cost or valuation</b>	
At 1 April 2021	293,914
Additions	319,935
Valuation changes	2,426
Disposals	(273,570)
	<u>342,705</u>
At 31 March 2022	342,705
<b>Carrying amount</b>	
At 31 March 2022	<u>342,705</u>
At 31 March 2021	<u>293,914</u>

#### Fixed asset investments revalued

Listed investments include an investment portfolio managed by Transact and are included on the basis of market value, with an historical cost of £314,366 (2021 - £229,252).



# SOUTHERN DOMESTIC ABUSE SERVICE

## NOTES TO THE ACCOUNTS (CONTINUED) FOR THE YEAR ENDED 31 MARCH 2022

<b>17</b>	<b>Financial instruments</b>	<b>2022</b>	<b>2021</b>
		<b>£</b>	<b>£</b>
	<b>Carrying amount of financial assets</b>		
	Instruments measured at fair value through profit or loss	342,705	293,914
		<u>          </u>	<u>          </u>
<b>18</b>	<b>Debtors</b>	<b>2022</b>	<b>2021</b>
		<b>£</b>	<b>£</b>
	<b>Amounts falling due within one year:</b>		
	Trade debtors	384,133	38,145
	Other debtors	2,369	418
	Prepayments and accrued income	333,732	74,288
		<u>          </u>	<u>          </u>
		720,234	112,851
		<u>          </u>	<u>          </u>
<b>19</b>	<b>Creditors: amounts falling due within one year</b>	<b>2022</b>	<b>2021</b>
		<b>£</b>	<b>£</b>
	Other taxation and social security	87,724	56,635
	Trade creditors	236,320	255,996
	Other creditors	25,894	17,969
	Accruals and deferred income	59,991	100,296
		<u>          </u>	<u>          </u>
		409,929	430,896
		<u>          </u>	<u>          </u>
<b>20</b>	<b>Auditor's ethical standards</b>		
	In common with many entities of our size and nature we use our auditors to assist with the preparation of the statutory financial statements.		
<b>21</b>	<b>Provisions for liabilities</b>	<b>2022</b>	<b>2021</b>
		<b>£</b>	<b>£</b>
	Pension scheme deficit contribution provision	851	3,649
		<u>          </u>	<u>          </u>

# SOUTHERN DOMESTIC ABUSE SERVICE

## NOTES TO THE ACCOUNTS (CONTINUED) FOR THE YEAR ENDED 31 MARCH 2022

		(Continued)	
21	Provisions for liabilities	2022	2021
	Movements on provisions:		
	At 1 April 2021	3,649	4,323
	Deficit contribution paid	(923)	(896)
	Unwinding of discount	21	97
	Remeasurements - impact of any change in assumptions	(20)	125
	Remeasurements - amendments to the contribution schedule	(1,876)	-
		<u>          </u>	<u>          </u>
	At 31 March 2022	851	3,649
		<u>          </u>	<u>          </u>
	Income and expenditure impact		
	Interest expense	(21)	(97)
	Remeasurements - impact of changes in assumptions	20	(125)
	Remeasurements – amendments to the contribution schedules	1,876	-
		<u>          </u>	<u>          </u>
	Costs recognised in income and expenditure account	1,875	(222)
		<u>          </u>	<u>          </u>
	Assumptions	2.35%	0.66%
	Rate of discount	<u>          </u>	<u>          </u>

The discount rates shown above are the equivalent single discount rates which, when used to discount the future recovery plan contributions due, would give the same results as using a full AA corporate bond yield curve to discount the same recovery plan contributions.

# SOUTHERN DOMESTIC ABUSE SERVICE

## NOTES TO THE ACCOUNTS (CONTINUED) FOR THE YEAR ENDED 31 MARCH 2022

### 22 Retirement benefit schemes

#### Defined contribution schemes

##### SCHEME: TPT Retirement Solutions – The Growth Plan

The company participates in the scheme, a multi-employer scheme which provides benefits to some 638 non-associated participating employers. The scheme is a defined benefit scheme in the UK. It is not possible for the company to obtain sufficient information to enable it to account for the scheme as a defined benefit scheme. Therefore it accounts for the scheme as a defined contribution scheme.

The scheme is subject to the funding legislation outlined in the Pensions Act 2004 which came into force on 30 December 2005. This, together with documents issued by the Pensions Regulator and Technical Actuarial Standards issued by the Financial Reporting Council, set out the framework for funding defined benefit occupational pension schemes in the UK.

The scheme is classified as a 'last-man standing arrangement'. Therefore the company is potentially liable for other participating employers' obligations if those employers are unable to meet their share of the scheme deficit following withdrawal from the scheme. Participating employers are legally required to meet their share of the scheme deficit on an annuity purchase basis on withdrawal from the scheme.

A full actuarial valuation for the scheme was carried out at 30 September 2020. This valuation showed assets of £800.3m, liabilities of £831.9m and a deficit of £31.6m. To eliminate this funding shortfall, the Trustee has asked the participating employers to pay additional contributions to the scheme as follows:

#### Deficit contributions

From 1 April 2022 to 31 January 2025:	£3,312,000 per annum	(payable monthly)
---------------------------------------	----------------------	-------------------

Unless a concession has been agreed with the Trustee the term to 31 January 2025 applies.

Note that the scheme's previous valuation was carried out with an effective date of 30 September 2017. This valuation showed assets of £794.9m, liabilities of £926.4m and a deficit of £131.5m. To eliminate this funding shortfall, the Trustee asked the participating employers to pay additional contributions to the scheme as follows:

#### Deficit contributions

From 1 April 2019 to 30 September 2025:	£11,243,000 per annum	(payable monthly and increases by 3% each on 1st April)
---	-----------------------	---

The recovery plan contributions are allocated to each participating employer in line with their estimated share of the Series 1 and Series 2 scheme liabilities.

Where the scheme is in deficit and where the company has agreed to a deficit funding arrangement the company recognises a liability for this obligation. The amount recognised is the net present value of the deficit reduction contributions payable under the agreement that relates to the deficit. The present value is calculated using the discount rate detailed in these disclosures. The unwinding of the discount rate is recognised as a finance cost.

**Present value of provision** £851 (2021 £3,649) see note 21



# SOUTHERN DOMESTIC ABUSE SERVICE

## NOTES TO THE ACCOUNTS (CONTINUED)

### FOR THE YEAR ENDED 31 MARCH 2022

#### 23 Restricted funds

The income funds of the charity include restricted funds comprising the following unexpended balances of donations and grants held on trust for specific purposes:

	Balance at 1 April 2020 £	Movement in funds			Balance at 1 April 2021 £	Movement in funds			Transfers £	Balance at 31 March 2022 £
		Incoming resources £	Resources expended £	Transfers £		Incoming resources £	Resources expended £	Transfers £		
Clr Dolan - E Hants	604	1,000	(1,000)	-	604	-	(604)	-	-	-
Reaching Communities Up2U	2,380	42,010	(44,390)	-	-	-	-	-	-	-
Children in Need	-	22,594	(16,476)	-	6,118	39,325	(44,295)	-	-	1,148
HCC East - MOJ IDVA	-	-	-	-	-	87,446	(87,446)	-	-	-
HCC West - MOJ IDVA	-	-	-	-	-	163,131	(163,131)	-	-	-
Hive	2,000	-	(1,159)	-	841	-	(508)	-	-	333
Rural Communities	-	9,000	(9,000)	-	-	25,200	(25,200)	-	-	-
Big Lottery Up2U	-	100,000	(100,000)	-	-	138,422	(138,422)	-	-	-
HCC East Safe Communities	-	-	-	-	-	25,725	(25,725)	-	-	-
PCC Safer Communities	-	1,000	(1,000)	-	-	1,257	(1,257)	-	-	-
Reaching Communities IDVA	33,477	149,956	(147,003)	-	36,430	151,780	(143,373)	-	-	44,837
OPCC	14,054	55,142	(47,175)	-	22,021	170,033	(192,054)	-	-	-
MOJ	-	25,870	(25,870)	-	-	71,465	(71,465)	-	-	-
VAWG HCP	-	30,000	(27,732)	-	2,268	40,783	(40,783)	(2,268)	-	-
Henry Smith	-	60,000	(60,000)	-	-	60,000	(60,000)	-	-	-
Labrynth Project	-	34,588	-	(34,588)	-	56,250	(41,621)	-	-	14,629
Armed Forces Covenant	23,122	49,972	(73,094)	-	-	44,855	(1,808)	(43,047)	-	-
Landlord Incentive Scheme	26,201	1,222	-	-	27,423	-	-	-	-	27,423
	101,838	582,354	(553,899)	(34,588)	95,705	1,075,672	(1,037,692)	(45,315)		88,370

# SOUTHERN DOMESTIC ABUSE SERVICE

## NOTES TO THE ACCOUNTS (CONTINUED) FOR THE YEAR ENDED 31 MARCH 2022

### 23 Restricted funds

(Continued)

The Reaching Communities IDVA fund was received to deliver Independent Violence Adviser Services to High Risk Victims in Havant, Fareham, Gosport and East Hampshire.

The Move On fund and Landlord Incentive Scheme was received for the specific purpose of working with women and children living in refuge accommodation.

BBC Children in Need fund was received to support children and young people in the Havant and Fareham refuges.

VAVG HCP was received to support those experiencing Harmful Cultural Practices.

Armed Forces Covenant Fund is to deliver work with people who use domestically abusive behaviours in their intimate partner relationships.

Councillor Dolan relates to funding for East Hampshire Refuges.

OPCC provided grants for group work for young people and parents to promote healthy relationships.

Hive hardship funding provides essential items for people to gain or maintain a tenancy.

Labyrinth Project provided funding that was used to map services in Hampshire to deliver training and workshops to both victims and professionals.

MOJ IDVA funding relates to services which addresses the safety of victims at high risk of harm from intimate partners, ex-partners or family members to secure their safety and safety of their children.

# SOUTHERN DOMESTIC ABUSE SERVICE

## NOTES TO THE ACCOUNTS (CONTINUED)

### FOR THE YEAR ENDED 31 MARCH 2022

#### 24 Designated funds

The income funds of the charity include the following designated funds which have been set aside out of unrestricted funds by the trustees for specific purposes:

	Balance at 1 April 2020 £	Transfers £	Balance at 1 April 2021 £	Transfers £	Balance at 31 March 2022 £
Hostel Operating costs	277,048	36,445	313,493	49,906	363,399
Portsmouth Repairs and Renewals	12,032	(6,016)	6,016	1,504	7,520
Furniture Replacement Fund	23,060	5,632	28,692	(2,100)	26,592
Dispersed Accommodation Renewals/ Repairs Reserve	11,982	2,422	14,404	6,324	20,728
New Refuge Fundraising	508,619	691,381	1,200,000	300,000	1,500,000
Dispersed Accommodation	131,595	-	131,595	(3,980)	127,615
Refuge Provision Reserve	-	204,975	204,975	-	204,975
Staff Pension Reserve	17,608	674	18,282	(1,907)	16,375
Redundancy Reserve	96,496	-	96,496	-	96,496
FGM/HCP Reserve	20,000	20,000	40,000	(20,000)	20,000
Digital IT fund				29,127	29,127
WISH				117,082	117,082
New office fund				300,000	300,000
Designated project fund				1,399,667	1,399,667
Designated play equipment fund				181,223	181,223
Dispersed properties				590,214	590,214
	<u>1,098,440</u>	<u>955,513</u>	<u>2,053,953</u>	<u>2,947,060</u>	<u>5,001,013</u>

The above reserves were designated by the committee to provide for a minimum of three months operating costs. Reserves include operating costs for general and designated projects, furniture replacement funds, new refuge fund, redundancy reserve and staff pension reserve.

#### 25 Analysis of net assets between funds

	Unrestricted funds 2022 £	Restricted funds 2022 £	Total 2022 £	Unrestricted funds 2021 £	Restricted funds 2021 £	Total 2021 £
Fund balances at 31 March 2022 are represented by:						
Tangible assets	213,064	-	213,064	164,953	-	164,953
Investments	342,705	-	342,705	293,914	-	293,914
Current assets/(liabilities)	5,436,083	88,370	5,524,453	3,549,707	166,957	3,716,664
Provisions	(851)	-	(851)	(3,649)	-	(3,649)
	<u>5,991,001</u>	<u>88,370</u>	<u>6,079,371</u>	<u>4,004,925</u>	<u>166,957</u>	<u>4,171,882</u>



# SOUTHERN DOMESTIC ABUSE SERVICE

## NOTES TO THE ACCOUNTS (CONTINUED) FOR THE YEAR ENDED 31 MARCH 2022

---

### 26 Financial commitments, guarantees and contingent liabilities

Southern Domestic Abuse Service has been notified by The Pensions Trust of the estimated employer debt on withdrawal from the Plan based on the financial position of the Plan as at 30 September 2017. As of this date the estimated employer debt for Southern Domestic Abuse Service was £16,375.

### 27 Operating lease commitments

At the reporting end date the charity had outstanding commitments for future minimum lease payments under non-cancellable operating leases, which fall due as follows:

	2022 £	2021 £
Within one year	475,782	293,293
Between two and five years	548,182	589,476
In over five years	-	126,723
	<hr/>	<hr/>
	1,023,964	1,009,492
	<hr/>	<hr/>

### 28 Related party transactions

There were no disclosable related party transactions during the year (2021 - none).

#### Remuneration of key management personnel

The remuneration of key management personnel is as follows.

	2022 £	2021 £
Aggregate compensation	242,338	372,833
	<hr/>	<hr/>

# SOUTHERN DOMESTIC ABUSE SERVICE

## NOTES TO THE ACCOUNTS (CONTINUED) FOR THE YEAR ENDED 31 MARCH 2022

29	Cash generated from operations	2022 £	2021 £
	Surplus for the year	1,907,489	1,579,449
	Adjustments for:		
	Investment income recognised in statement of financial activities	(489)	(1,968)
	Fair value gains and losses on investments	(2,426)	(54,592)
	Depreciation and impairment of tangible fixed assets	52,923	33,825
	Movements in working capital:		
	(Increase)/decrease in debtors	(607,383)	132,113
	(Decrease)/increase in creditors	(20,967)	213,628
	(Decrease) in provisions	(2,798)	(674)
	(Decrease) in deferred income	-	(120,695)
	<b>Cash generated from operations</b>	<b>1,326,349</b>	<b>1,781,086</b>
30	<b>Analysis of changes in net funds</b>		
	The charity had no debt during the year.		

Southern Domestic Abuse Service  
PO Box 53  
Havant  
Hampshire  
PO9 1UA

17 November 2022

Our Ref: SDAS50/792315

Dear Sirs

Piper House, 4 Dukes Court  
Bognor Road, Chichester  
West Sussex, PO19 8FX

Telephone: 01243 789031

53 Kent Road  
Southsea, Portsmouth  
Hampshire, PO5 3HU

Telephone: 02392 820726

## REPORT TO MANAGEMENT

In accordance with our normal practice we are writing to draw your attention to various matters which arose during the course of our audit of the financial statements of Southern Domestic Abuse Service Limited T/A Stop Domestic Abuse (SDA) for the year ended 31 March 2022.

1. An appendix attached contains any comments or observations we have concerning the qualitative aspects of the entity's accounting practices and financial reporting.
2. We did not encounter any significant difficulties during the audit and there are no significant findings from the audit to draw to your attention. The comments in the attached appendix have not given us cause to alter the outcome of our audit report.
3. We have complied with the Ethical Standard for Auditors and all threats to our independence, as identified to you in our planning letter dated 23 March 2022, have been properly addressed through appropriate safeguards. No additional facts or matters have arisen during the course of the audit that we wish to draw to your attention and we confirm that we are independent and able to express an objective opinion on the financial statements.
4. Our proposed letter of representation is attached. We draw your attention to the paragraphs concerning Ethical standards, in other respects the letter is routine. We have uploaded a copy to our Portal; this should be printed on your headed paper, signed and dated and returned to us with the signed accounts.
5. A schedule is attached of all unadjusted misstatements determined during the course of our audit, except for those considered to be clearly trivial.
6. We have no comments or observations concerning the selection and application of accounting policies.
7. As you are aware from our letter of engagement, our audit procedures were directed towards testing the accounting systems in operation upon which we have based our assessment of the financial statements. Any recommendations provided as a result are not meant to be a full and accurate reflection of all weaknesses that may be present in your system.

8. Any matter which might come to light would do so during the course of our normal audit tests which are designed to assist us in forming our opinion on the financial statements. Our tests may not necessarily disclose all errors or irregularities and should not be relied upon to do so. However, if any irregularity did come to our attention during our audit tests, we would, of course, inform you immediately.
9. We do not propose any modifications to our audit opinion and hence will be issuing a clean audit report.

This report has been prepared for the sole use of the Board of SDA and must not be shown to third parties without our prior consent. No responsibilities are accepted by Jones Avens Limited towards any party acting or refraining from action as a result of this report.

Finally, we would like to express our thanks to all members of SDA's staff who assisted us in carrying out our work.

Yours faithfully

**Jones Avens**  
**Enc**



## **Southern Domestic Abuse Service**

Points noted during the course of our audit for the year ended 31 March 2022:

### **Reconciliation of restricted fund income and expenditure**

#### **Observation**

We noted on our management letter for the year ended 31/03/21 that we were not provided a reconciliation for restricted fund movements for the year. A reconciliation was also not provided for the year ended 31/03/22.

#### **Implication**

Compiling a reconciliation of restricted funds combining the Sage records and management accounts, alongside discussion with SDA staff was possible however this is very time consuming. Not having a reconciliation available at planning increases the risk of a misstatement in this area and additionally potentially increases the audit work required. While we are more than happy to provide advice, the audit must not be relied upon to ensure the correct allocation between restricted and unrestricted funds.

#### **Recommendation**

It would be beneficial going forward if we can receive a detailed reconciliation of restricted funds that replicates the disclosure required in the accounts. We can then perform our audit testing based on this schedule.

#### **SDAS comment**

Regular Balance Sheet reconciliations will be implemented, with a fully reconciled balance sheet at the year end. A reconciliation of restricted funds will be available to auditors in future as part of this process.

## **Reconciliation of contract income with the accounts**

### **Observation**

We had some difficulty reconciling the ongoing contract income with the figures in Sage and the financial statements, especially in cases where ongoing contracts have seen additional or related funding.

### **Implication**

As part of our audit testing, we need to be able to agree the values in the financial statements to third party contracts and/or other documentation to ensure that it is not only correctly recorded as income but that the values in the accounts are complete as at the year end and that accruals or deferred income are not missed.

### **Recommendation**

We would recommend that the departments or nominal codes within Sage could be utilised and that any other form of reconciliation ties into agreements directly to make it easier to agree the accounts with related records.

### **SDAS comment**

New processes are being developed to ensure contract income is reconciled to the budget. Actual income will then be reviewed against budget as part of the management accounts review.

## **Aged Debtors balances within Sage**

### **Observation**

We noted when testing the aged debtors' balances within Sage that there are many older balances which have not been matched off in Sage against later related transactions. In some cases this relates to transactions that have been put through to allocate funds to correct departments but which have not been matched off against related contracts.

### **Implication**

While the transactions have been posted up to date to ensure that the yearend balance is correct not ensuring that transactions are allocated against the correct invoices could lead to balances being incorrectly classified in the accounts or balances being missed when monitoring receipts internally.

### **Recommendation**

We would recommend that the ledgers are tidied up within Sage.

### **SDAS comment**

Work is underway to tidy up the ledgers during the current financial year 2022/23.

## **Availability of invoices and other documentation**

### **Observation**

We noted over the course of the audit that there was some difficulty in locating certain expenditure invoices, and to some degree grant contracts/agreements. We understand from discussions with SDA staff that this followed from the financial recruitment difficulties over the course of the financial year being audited leading to some invoices not being filed or collated as expected.

### **Implication**

We appreciate SDA staff worked hard to find invoices and related documents or obtain copies where these were not immediately available in order to respond to our audit queries, and we were therefore able to complete our testing for audit purposes. There is a risk however that further gaps in the availability of invoices or other documentation may exist within SDA's records which could have potential implications outside of the audit. This could cause issues with HMRC or grant funders for example.

### **Recommendation**

We would recommend that a system is implemented to ensure documentation to back up the charities income and expenditure is kept together and can be easily located when required.

### **SDAS comment**

Electronic copies of invoices are now attached to the ledger posting on Sage. Details of grant contracts and agreements are now documented on one spreadsheet which includes links to the location of relevant documentation.

*Our comments above are based on our findings from our audit for the year ended 31/03/22. We understand that there were difficulties recruiting appropriate finance staff during the financial year audited and that recruitments have been made following the year end. We also understand that these difficulties likely contributed to our findings above and that efforts are underway to address these issues.*



## Southern Domestic Abuse Service

Unadjusted misstatements in respect of the year ended 31 March 2022

		Value £	Effect of potential correction on surplus £
1	Grant income not accrued for in the 2020/21 financial statements	44,855	(44,855)
2	Computer equipment over the £1,000 threshold not capitalised (net effect after depreciation)	5,214	(5,214)

## Document Activity Report

**Document Sent**

Mon, 21 Nov 2022 15:58:33 GMT

### Document Activity History

Document history shows most recent activity first

**Date**

**Activity**

You can verify that this is a genuine Portal document by uploading it to the following secure web page:

**<http://jonesavens.accountantspace.co.uk/messages/VerifyDocument>**