



Sittingbourne
& Sheppey

ANNUAL REPORT 2020-21





Sittingbourne & Sheppey

First Floor, Central House, Central Avenue, Sittingbourne,
Kent ME10 4NU

Tel: 01795 429007

E-mail: home-startsitt@btconnect.com

Website: www.home-startsittingbourneandsheppey.org.uk

Company Number: 7952821
Registered Charity Number: 1146356



STAFF

Co-ordinator

Laura Jobson

(16hrs rising to 18hrs in September rising to 20hrs in October)

Administrator/Bookkeeper/DBS Countersignatory

Mandy Gambell

(16hrs rising to 18hrs in September rising to 20hrs in October)

Family Support Worker

Wendy Tomlin

(12hrs - employed in September)

BOARD OF TRUSTEES 2020/21

Chairman

Christine White

Treasurer

Terry Spillard (left June '20)

Independent

Kerry Spurling

Sylvia New

Tracy Hodges

Elaine St Ledger

Fran Sinclair-Taylor

VOLUNTEERS

Alison
Camilla
Debra
Kirsty
Lin

Louise
Maureen
Natalie
Stacey
Sue

Volunteer support ceased during the covid pandemic, with volunteers self-isolating or caring for family





What is Home-Start?

Home-Start is the UK's leading family support charity. Founded in 1973 in Leicester by Margaret Harrison, it has grown to hundreds of local Home-Start schemes across the UK and with forces in Germany and Cyprus. Home-Start UK provides these schemes training, policies, quality assurance, guidance and support.

Home-Start Sittingbourne & Sheppey began in 1994, and has grown to offer local families valuable volunteer support, and to offer a Twins Group, and to also help guide families in to support from other organisations such as local Children's Centres.

We are one of eight schemes in Kent to go into homes in crisis to take the strain off families - often their only lifeline now service cuts have reduced other forms of family support. We help families cope so that they can provide the love and laughter their children need to flourish.

Because childhood can't wait



What do we do?

Parents supporting parents - local, trained volunteers helping families with young children through their challenging times.

Why do we do it?

The earliest years make the biggest impact: Home-Start makes those years count so that no child's future is limited.

How do we do it?

No judgement, just compassionate, confidential help and expert support. Starting in the home, our approach is as individual as the people we are helping.

The issue

A child's earliest years are irreplaceable. Without a stable, loving and nurturing environment, a very young child will not develop the vital foundations they need. They will not develop the skills that help with everything from their behaviour, their ability to learn, their confidence or even some of the most basic things, like being able to go to the toilet. Once the chance is missed, making up lost ground in later life is difficult, expensive and often just doesn't happen.

Local authorities are so overstretched and funding is sparse in Swale. A child's future shouldn't be blighted before it's even started.



Chair's Report

I have been Chair of Home-Start Sittingbourne & Sheppey for many years now and both our Annual General Meeting and our Annual Report seem to come around quicker each year. The past year, with all the problems of the global Covid 19 pandemic, made this probably the most challenging year we have ever faced. However, as always, our two long-standing and excellent staff consisting of Laura, our Co-Ordinator, and Mandy, our Administrator, have continued in their work supporting Home-Start families and their children and keeping our charity going. Laura and Mandy have had to be use new and innovative ways of offering support including by phone, zoom and dropping off to the front door safely all sorts of craft and activity items to make a difference to our families and their children whatever their age. My very grateful thanks to them both for an outstanding year of service to our charity and our families under extremely difficult circumstances.

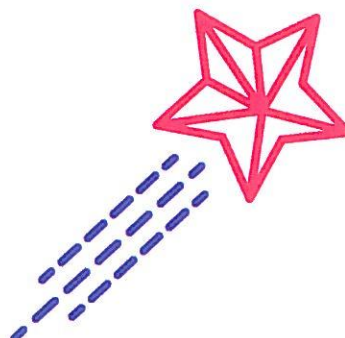
Laura will give detailed information on the work undertaken and the funding that has been secured to allow this vital support to families during the year in her report. I am delighted to say that in September after receiving funding distributed through Home-Start UK we were able to recruit a new Family Support Worker, Wendy, to give intense support to some of our Home -Start mums struggling through the restrictions of the pandemic. This project has worked extremely well and I would like to give my thanks to Wendy for her input to our service and working so well again during difficult times.

Laura Jobson, our Co-ordinator, has been with Home-Start Sittingbourne & Sheppey for over 27 years and I was actually involved in her initial recruitment and so pleased to say I was on the interview panel that appointed Laura to the post of Organiser as it was called then. What an absolutely fantastic and excellent decision that was – one of the best I have been involved in, I have worked alongside Laura for all this time and I will miss her greatly now she has decided to retire. I must thank her for her dedicated work and expertise she has brought to our charity and for all the support and help she has given to so many families and their children for so many years. We will all miss your kind and supportive way you have; its been a pleasure and an honour to work with you over the years!

I must welcome Allison McColl to the role of Co-ordinator who has already started with us and I am pleased to say that I was part of this interview panel; I am sure it has been a great decision, too. Allison worked previously for Home-Start Sittingbourne and Sheppey and it is lovely to welcome her back and I am looking forward to working with her in the future.

I cannot finish as always without taking this opportunity of thanking the key people within Home-Start that help make the organisation what it is today; thank you to all the trustees whose enthusiasm, commitment and time are given freely for the benefit of our parents and children and the wider community. We have had a couple of new trustees join us this year which has been brilliant and I look forward to working with you in the year ahead. Grateful thanks must also go to the volunteers that support both us and the families they visit.

Christine White
Chair





Co-ordinator's Report

This last year has been very challenging for us all, both at work and at home. When the lockdown was announced I was on annual leave in Norfolk and returned to find we had been locked out of the office. Our first challenge was to access the office so that we could work from home. Luckily Alison from the Avenue Theatre and Chris, our Chair, were able to help. The next challenge was to maintain contact with the volunteers and families. Both Mandy and I sent e-mails and text messages to the volunteers with updates on the support we were offering families; all of the volunteers have been shielding due to their own health needs, a family members health needs or were busy looking after their children and home schooling.

The families were contacted by text at first and then I developed our doorstep craft and activity service. All of the families who were home visited by a volunteer and the twins group families were offered weekly visits with packs for every child in the home. We decided to include the older children who were being home schooled and I found word searches, puzzles, number activities and colouring sheets suitable for the older children. Working from home I spent one day each week printing activity sheets on my small printer and making up age-appropriate packs for each child in the home. For two days each week I delivered packs to each family; we had a talk on the doorstep and the mums told me about issues concerning them such as balancing home schooling with looking after the younger children, shopping, cooking and household chores. Some families also needed safety equipment, bedding and food vouchers; these were bought with grant funding and donations.

In September a grant distributed by Home-Start UK from DCMS enabled us to employ a Family Support Worker to work intensely with mothers who were struggling to cope during the restrictions which impacted on their mental health. Although the initial project was only for four months, we found additional funding to continue this project.

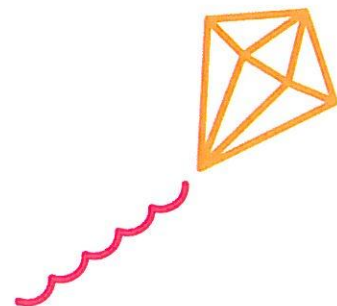
With support from Home-Start UK who administered a DCMS/Pears grant to help local Home-Starts build capacity and improved financial capability, and a donation from the Trustees of Home-Start Canterbury and Coastal which closed in April 2020, we have been able to recruit a Co-ordinator to take on the scheme and allow me to retire after 27 years.

I would like to thank the home visiting volunteers who have given so many hours of support to hundreds of families and the trustees who have given their knowledge, experience and time to ensure we complied with charity and company law and followed Home-Start policies and procedures.

It has been an amazing experience being part of Home-Start Sittingbourne and Sheppey family support service.

Thank you,

Laura Jobson
Co-ordinator





Family support during Covid-19

We are grateful that our current grant funders Tampon Tax Community Fund, Kent Community Foundation (Rooney Foundation), Kent Community Foundation (Lawson Fund), the Henry Smith Charity and the Colyer Fergusson Charitable Trust, agreed to adapt their grant specifications to allow us to offer a doorstep service to all of the families throughout the pandemic. They also allowed us to use some of the funding to buy craft for the children's packs.



We are supporting 18 families with 33 children by text and weekly visits delivering craft and activity packs. 306 packs have been delivered during May, June and July.



CIRCUS



BUTTERFLIES



MERMAIDS/JELLYFISH



FATHER'S DAY



EGYPT

The craft/activity packs were delivered to the family for each child in the home.



PIRATES



DINOSAURS



JUNGLE



SPACE



MUMS' PAMPER PACKS

At Christmas Home-Start UK formed a partnership with John Lewis to raise funds for Home-Start and Fairshare. We were given a grant which we used to buy extra items for each family, tins of biscuits, tubs of sweets and food vouchers. We were also given hats, scarves and gloves for the children from The White Stuff, and also Christmas decorations. John Lewis asked their Waitrose stores to partner with a local Home-Start and we were allocated the store at Allington. The staff donated a gift bag filled with toiletries and chocolate for every mum we were supporting.



With grants from Kent Community Foundation Emergency Fund, DEFRA emergency fund and the Linda Hogan Community Fund we were able to buy more stickers and craft for the packs, hand sanitiser, face masks, flowers and pamper gifts for parents. We also bought Aldi food vouchers which we distributed to families through the autumn and winter months.

Mother's Day gifts and craft for the children



Christmas gifts for the mums



Mums' pamper packs



In September the Twins Group met in a park in Sittingbourne until covid cases began rising and the country went into lockdown again.

From April 2020 to March 2021, 32 parents and 67 children were supported by the Co-ordinator and from September the Family Support Worker took on 6 of the families.

Quotes from parents

"I meant to message you but kept forgetting I'm so sorry! I wanted to thank you for the package you dropped off, it has been very helpful. I have been quite poorly recently so a pamper pack definitely helped"

"Thank you so much can't wait to sit down with them and do some bits. Was the little bag (pamper pack) from you as well?.....Thank you so much xx"

"M showed me his amazing fish, he was very proud"

"Thank you, the boys are loving all the bubbles,"

"Thanks ever so much. R absolutely loves dinosaurs so the last pack went down a treat"

"My girls have enjoyed the craft packs every week. Thank you. Xx"

"It is very appreciated. Xxx"

"The children are always excited to look in the bag and get creative. Xx and its been lovely to see a friendly face every week. Thank you."

"So engrossed they can't even look up for a photo. Thanks again xx"

"Thank you for the craft and vouchers, I really appreciate it. Sorry I didn't get to the door, not too good this week, doctor upped my antidepressants !!"

"Thank you so much for the bits today. It was a lovely surprise"

"Thank you so much for all of the Christmas gifts and vouchers. They couldn't have come at a more needed time. I have just been made redundant."

These gifts and food vouchers have made such a difference to the mums and their children during a time of great uncertainty when they have been unable to see friends and family, older children not able to attend school, and work for some parents suddenly ended with no date when it would resume. Many of the parents felt anxious about leaving their homes, others felt constrained because they could not go out, most of the mothers felt depressed at some time during the lockdowns, worried about the future and when things may become more normal.

The children have also struggled with spending so many months at home, missing their friends and family. For some the return to school has caused anxiety, lack of confidence and they have taken several months to settle back in. Babies born during the year have not had an opportunity to socialise with their peers or family members.



Families' feedback

Families were asked by the Co-ordinator at the end of this year what difference the regular visits and deliveries of craft, activities, pamper packs, toys and gifts made to them during lockdown.

1) Overall, how satisfied are you with the contents of the packs?

"The girls love the crafts and always enjoy it."

"It's been so nice to receive gifts that have been just for us mums, we usually get forgotten."

"The food vouchers have definitely improved our lockdown Christmas."

"My son likes them."

"We love them, they want to open the packs straight away."

"Very, lots of variety for the children, they love looking in the bag and trying the activities."

"They have been great, both boys enjoyed them."

"Amazing, brilliant, they look forward to them each week."

"Very, 100%."

Extremely satisfied, they have been great."

"All have been lovely."

2) Do you feel that your child/ren enjoyed the activities?

All of the families agreed their children including older siblings enjoyed the activities.

Many of the younger children enjoyed the stickers each week.

3) Do you feel the packs helped you and your child/children try different activities together?

"They have helped me to talk about and teach them things with each different theme."

"The activities that result in making something such as the Christmas wreaths have been great."

"They have helped the children feel a sense of achievement when we put their work on the wall."

"We have spent so much time indoors it has been good to talk about different things and to do the activity together."

"Yes, the stickers are their favourite."

"I would not have tried painting with my daughter (20months) if you had not given me the painting sticks. We have had great fun."

"Yes, we sit and do them together, the tractor one was his favourite."

"The big crayons and paint sticks, I would never have tried them."

"Yes, we have tried things I did not know about and could not get during lock down, we have looked forward to each week's delivery."

4) Were the gifts from John Lewis suitable for your child?

"Amazing, so wonderful."

"R... loved her scarf and wore it indoors, perfect for the winter."

"Yes, great."

"Yes very. Just right for the cold months."

"Yes, overwhelmed by the Christmas gifts, so unexpected and lovely."

"Yes, hats will fit for a long time."

"Yes, the hats have been worn everywhere, all round the house all day."

5) How have the restrictions affected you personally?

"Money was tighter, children hated being inside all day."

"My Mum could not visit."

"Older child sat GCSE's, very difficult for her."

"Reduced income meant we had to cut out luxuries, purchases became more considered."

"Girls have not been able to build social skills due to groups closed and not being able to mix with any other children."

"The first few months were very hard, not seeing Mum. Now we are able to meet its much better."

"Had anxiety and depression before, this has brought the feelings back and worse. Still get panic attacks and worry about going out and meeting people."

"It has been difficult to get the court and divorce proceedings done. Everything takes so long."

"Not seeing my parents has been hard but they were able to visit last week."

"It has been so difficult to attend hospital appointments for me."

"My family live in Ireland and I have not seen them for so long, my sister had a baby last year and I have not seen her yet."

"My mental health was affected, I need to get out of the home."

"It has been hard not seeing family who live in Poland, I usually visit every year in the summer for a month and they come for Christmas."

6) Is there anything else you would like to say?

"Fantastic support over the year."

"Your support has been brilliant, Thank you."

"Please can the support continue."

"Thank you for your support and help we will miss you."

"Thank you for the extras they have made such a difference to me."

"Thank you for the extra bits and shopping/food vouchers they have been a great help."

"We all really appreciate all the thought and effort that goes into the gifts and activities, we built the activities into our routine during lockdown to give the girls some stability. They often do the stickers while on Zoom to the Grandparents they create a good discussion and they sit still."

"Now things are returning to normal the stickers are great as a rainy day activity. Thank you."

"What an amazing bag of goodies today! Thank you so much. Looking forward to a lovely soak in the bath tonight once the children are in bed."

"The children enjoyed making their penguins, thanks so much, very useful because we are isolating as 3 of us have tested positive for covid."

"Thank you it's been lovely to see a friendly face each week."





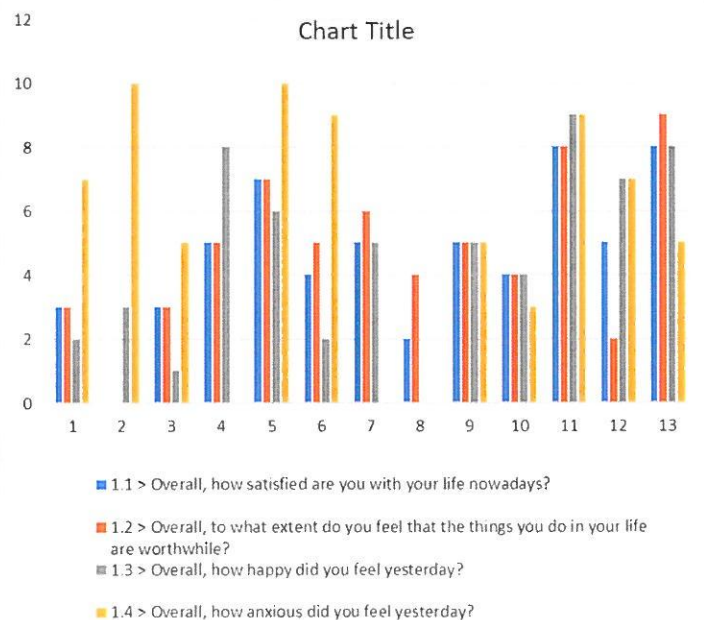
Loneliness Project

Home-Start UK secured funding from DCMS to work with mums who could be isolated, expectant or new mums, have no other support network in the country or have serious vulnerability around mental health. We were asked to provide support several times a week which could include face to face, phone, WhatsApp or Zoom. In addition, we provided practical support to attend appointments, access local services and help to integrate back into the community. The project was from September to December and we supported 10 mothers during this time. There were outcomes to measure using a questionnaire completed by the mother at the initial visit, during the support and at the end of the support. The mothers were asked how often they felt isolated, lonely, left out and lacking companionship.

The funding enabled us to recruit a Family Support Worker for 12 hours a week and support 7 families, and the Co-ordinator supported 3 families.

Support to mums included:

- Emotional support- someone to talk to / a listening ear
- Weekly meeting up face to face
- Getting out of the house and going for a walk
- Weekly craft packs
- Potty training/sleep advice



Although the project was only for 4 months the Family Support Worker was able to build close supportive relationships with the mums and help them to feel less isolated and lonely. We secured further funding for the Family Support Worker to continue to work with the mums until the end of March.



MESH Outcomes Report

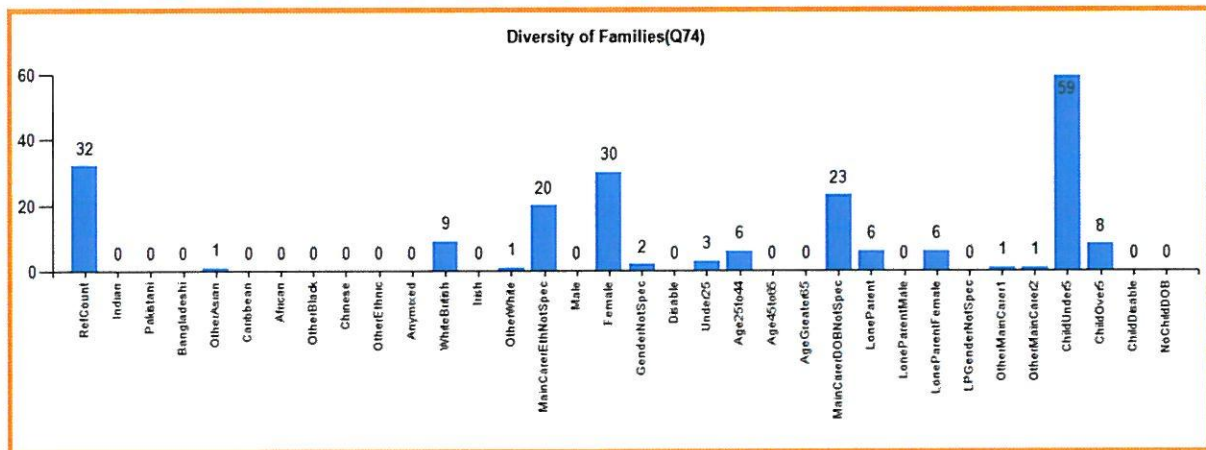
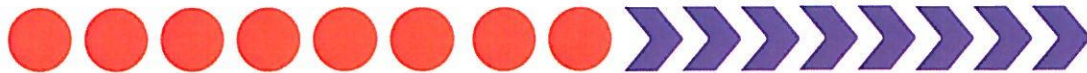
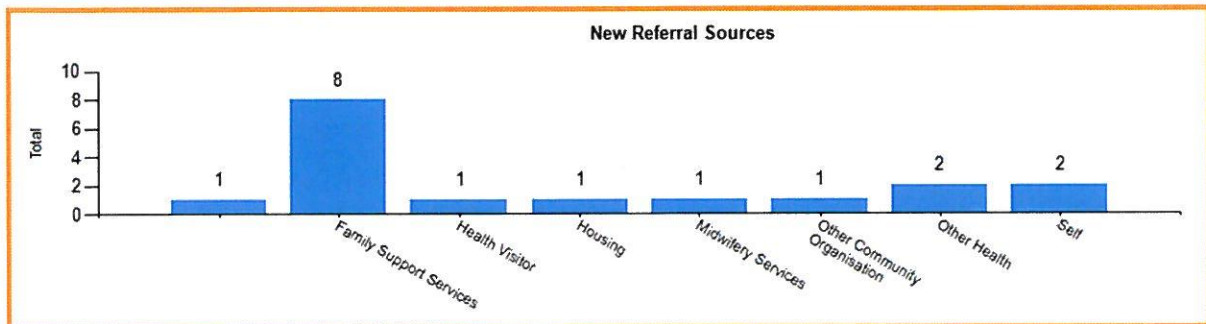
The Monitoring and Evaluation System Home-Start (MESH) is a statistical database held centrally by Home-Start UK (until its final ending date of 31st March 2021). All statistical information is input onto the system by us regularly - it collates information about our families, the type of support they receive and outcomes, as well as volunteer/paid worker visits to families. MESH reports are regularly produced for our trustees and at-a-glance statistics used for funding bids.

Total number of families referred for the year - 17

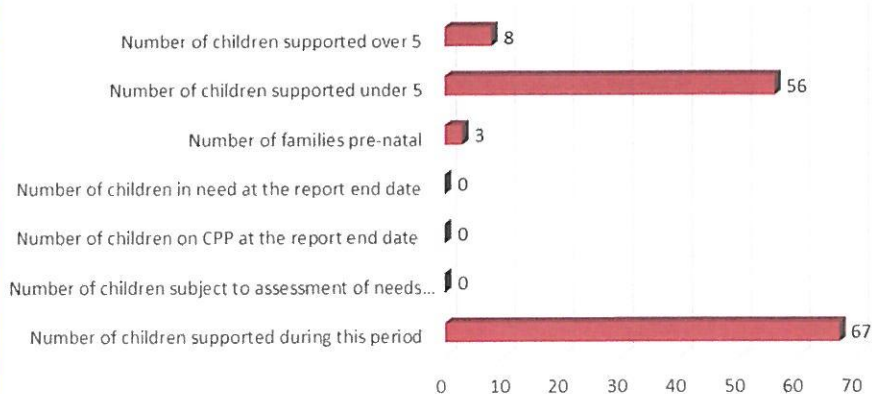
(down on previous years due to the covid pandemic/periods of lockdown)

Total number of families supported for the year - 32

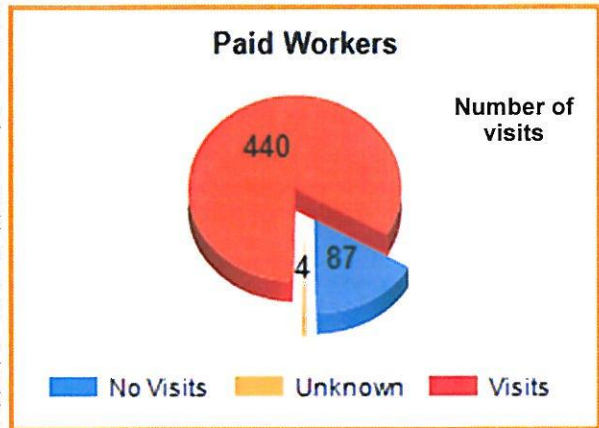
(figure includes families carried over from the previous year)



Children supported



Due to the outbreak of the covid pandemic, and periods of lockdown, no support visits within the families' homes took place. These were replaced by socially distanced doorstep visits, where initially the Co-ordinator would deliver craft packs and PPE to families. Our small team of volunteers had to stop due to their own health issues or caring for others. A Family Support Worker was employed in late August to help the Co-ordinator with the deliveries and visits, and this has continued throughout this year, and has included further deliveries of food vouchers, pamper gifts and Christmas gifts donated by White Stuff and Waitrose. The Family Support Worker has also been maintaining contact to the families with WhatsApp video calls and text/phone calls. Details of these visits are then entered onto the MESH system.



The figures in the graph above have been broken down into number of visits that took place, and number of visits that did not take place (due to the parent cancelling the visit, re-arrangement, or not at home when visit booked).

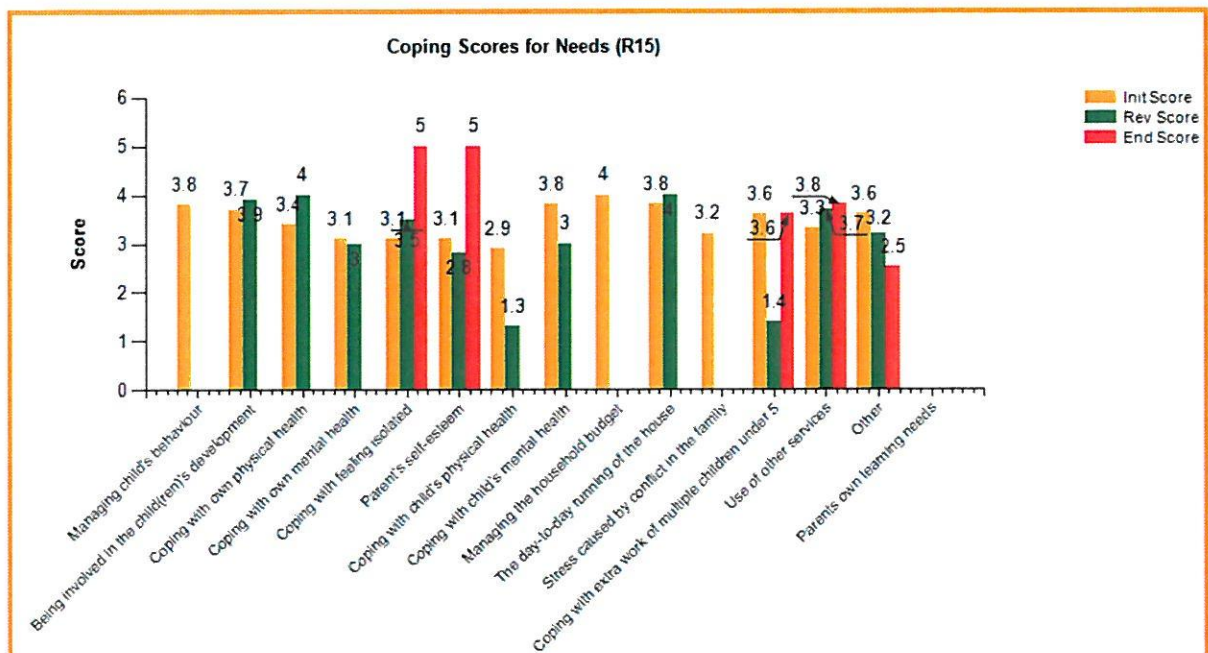


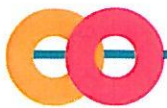
The duration of face to face visits for the year made by the Co-ordinator and Family Support Worker was

200 hours

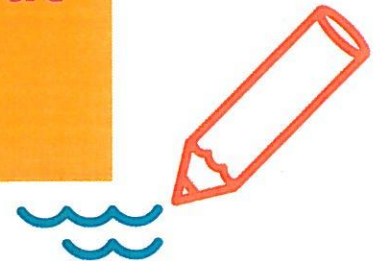


Each visit to the families from the Co-ordinator (initial, reviews and end visit) are given a coping score, broken down into reasons for support. The coping score is 1-5, and we can also check each family individually how their coping scores progress during the duration of support.





We would like to take this opportunity to thank the following who funded us and gave donations throughout the year...



Bentley Reid & Co
(£5,000 for our Twins Group)

Kent Community Foundation (Covid19 grant)
(£4,000 for our supporting families during the covid pandemic)

Linda Hogan Foundation (Covid19 grant)
(£230 for supporting families during the covid pandemic)

Canterbury Christchurch College
(£560 for a student social worker placement)

Home-Start UK (Loneliness grant)
(£5,000 for supporting families during the covid pandemic)

Swale CVS (DEFRA grant)
(£750 for supporting families during the covid pandemic)

Kent Community Foundation
(£1,500 for our core work)

Home-Start UK (Connecting with Families grant)
(£800 for supporting families during the covid pandemic)

West Kent Extra (Linda Hogan Foundation)
(£100 for gifts for families during the covid pandemic)

Home-Start UK DCMS/Pears Foundation
(£9,880 for bridging support, assistance with income generation, support with finance)

Groundworks (Comic Relief)
(£2,000 for Family Support Worker role)

Home-Start Canterbury
(£1,500 donation for core work)

Home-Start Canterbury
(£7,500 donation for Co-ordinator role)

Home-Start UK (Caring for Families during Covid grant)
(£1,248 for supporting families during the covid pandemic)

Foyle Foundation
(£4,500 for Family Support Worker role from April 2021)

M Robertson
(£1,000 donation)

And gift donations from White Stuff and Waitrose for all of our families





John Lewis


**Christmas 2020 campaign raising money for
Home-Start and Fareshare**



First Floor, Central House, Central Avenue, Sittingbourne,
Kent ME10 4NU
01795 429007

home-startsitt@btconnect.com

www.home-startsittingbourneandsheppey.org.uk

 Find us on Facebook

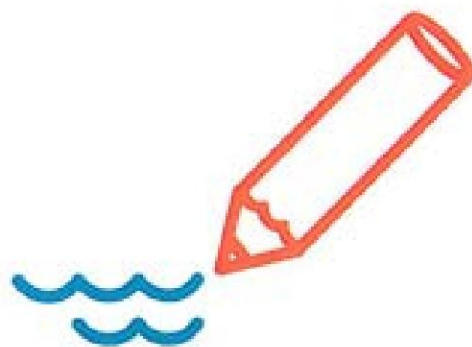
OFFICE OPEN:

Mon to Thurs - 9.00am to 2.00pm
Closed Fridays



**Sittingbourne
& Sheppey**

**FINANCIAL STATEMENTS
YEAR ENDED
31ST MARCH 2021**



Registered Charity Number: 1146356
Company Number: 7952821



Section A

Independent Examiner's Report

Report to the trustees/
members of

HOME-START SITTINGBOURNE & SHEPPEY

On accounts for the year
ended

31ST MARCH 2021

Charity no
(if any)

1146356

Set out on pages

(remember to include the page numbers of additional sheets)

I report to the trustees on my examination of the accounts of the above charity ("the Trust") for the year ended DD / MM / YYYY.

Responsibilities and
basis of report

As the charity's trustees, you are responsible for the preparation of the accounts in accordance with the requirements of the Charities Act 2011 ("the Act").

I report in respect of my examination of the Trust's accounts carried out under section 145 of the 2011 Act and in carrying out my examination, I have followed all the applicable Directions given by the Charity Commission under section 145(5)(b) of the Act.

Independent
examiner's statement

[The charity's gross income exceeded £250,000 and I am qualified to undertake the examination by being a qualified member of [insert name of applicable listed body]]. Delete [] if not applicable.

I have completed my examination. I confirm that no material matters have come to my attention in connection with the examination (other than that disclosed below *) which gives me cause to believe that in, any material respect:

- the accounting records were not kept in accordance with section 130 of the Charities Act; or
- the accounts did not accord with the accounting records; or
- the accounts did not comply with the applicable requirements concerning the form and content of accounts set out in the Charities (Accounts and Reports) Regulations 2008 other than any requirement that the accounts give a 'true and fair' view which is not a matter considered as part of an independent examination.

I have no concerns and have come across no other matters in connection with the examination to which attention should be drawn in this report in order to enable a proper understanding of the accounts to be reached.

* Please delete the words in the brackets if they do not apply.

Signed:

Jenny Carter

Date:

28 MAY 2021

Name:

JENNY CARTER

Relevant professional
qualification(s) or body

DIPLOMA IN LEADING SKILLS

(if any):

Address:

3-5 HIGH STREET
MAIDSTONE
KENT ME14 1HJ

Section B

Disclosure

Only complete if the examiner needs to highlight material matters of concern (see CC32, Independent examination of charity accounts: directions and guidance for examiners).

Give here brief details of any items that the examiner wishes to disclose.

TRUSTEES' RESPONSIBILITIES

Under the Charities Act 1993, the Trustees are required to prepare a statement of accounts for each financial year of the incoming resources and application of resources in the year. In preparing the statement, the Trustees are required to:

- ❖ Select suitable accounting policies and apply them consistently;
- ❖ Make judgements and estimates that are reasonable and prudent;
- ❖ State whether applicable accounting standards and statements of recommended practice have been followed, subject to any material departures disclosed and explained in the statement accounts;
- ❖ Prepare the financial statements on the going concern basis unless it is inappropriate to presume that the charity will continue its operations

The Trustees are responsible for keeping proper accounting records which disclose with reasonable accuracy at any time the financial position of the charity at that time to enable the Trustees to ensure that any statement of account prepared by them complies with the regulations under Section 42 (1) of the Charities Act 1993. They are also responsible for safeguarding the assets of the trust and hence for taking reasonable steps for the prevention and detection of fraud and other irregularities.

Approved by the trustees via Zoom Trustee meeting 17/5/21

(date)17/5/21.....

and signed on their behalf by the Chair

(signed)CA White..... (date).....18/5/21.....

HOME-START SITTINGBOURNE & SHEPPEY

NOTES TO THE ACCOUNTS For the year ended 31st March 2021

Unrestricted Funds

£

Receipts

Kent Community Foundation (Covid19 grant)	4000
Linda Hogan Foundation (Covid19 grant)	230
Home-Start UK Loneliness grant	5000
Swale CVS (DEFRA grant)	750
Kent Community Foundation	1500
Home-Start UK Connecting Families grant	800
Home-Start Uk DCMS/Pears Foundation	9880
Home-Start (caring for families during Covid) grant	1248
West Kent Extra (Linda Hogan Foundation)	100
Canterbury Christchurch College	560
Groundworks (Comic Relief)	2000
Home-Start Canterbury and Coastal donation	1500
Home-Start Canterbury and Coastal donation	7500
Bentley Reid & Co donation	5000
M Robertson donation	1000
Foyle Foundation	4500
Total	45568

Other Income

^DBS income	1232
-------------	------

Payments

Home-Start UK receive 2% of our income for membership Levy	622.76
--	--------

Restricted Funds

^DBS Income – the Manager and Administrator provide enhanced and standard checks for Swale voluntary and community organisations. We charge an administration fee to cover administrator hours and postage (£1300.81). Total payments received (£1232) includes payment to DBS for checking staff (£520).

Twins Club –grants Donation from Bentley Reid & Co (5,000), Canterbury Christchurch College payment for student placement. Unspent grant funds for this year will be carried over and used when the group reopens at the children's centre.

Core Work – grant from Kent Community Foundation and donation from Home-Start Canterbury and Coastal following their closure in 2020

Covid19 grants- we received a grant from Kent Community Foundation to purchase a new laptop so that we can hold and attend Zoom meetings and pay for an annual subscription, grants from Linda Hogan, Swale CVS/DEFRA and Home-Start Uk enabled us to purchase food vouchers, toiletries, face masks/shields, anti-bac gel, craft and small gifts for the parents and children.

Home-Start Canterbury and Coastal - The scheme closed in April 2020 and remaining funds were donated to Thanet and Sittingbourne and Sheppey Home-Starts. We will be using some of the funds to cover the additional costs of the new co-ordinator.

Family Support Worker – The worker has been employed since September with funding for 4 months from the Home-Start Loneliness grant. From January to March the worker was funded by an underspend from the Lawson Fund. From April 2021 we have secured funding from Comic Relief and the Foyle Foundation to continue the role for a year.

Reserve Funds – We used £2,789 for staff salaries during April and May until the funders agreed to changes in the outcomes and expenditure due to the COVID19 restrictions.

	£
3 months' running costs to close scheme	11365.42
Redundancy liability for 1 staff to march 2022	6425.00
Total	<u>17790.42</u>

Home-Start Sittingbourne & Sheppey
Statement of Financial Activities
For the period from 01 April 2020 to 31 March 2021

	Unrestricted funds	Restricted funds	Endowment funds	Total funds	Prior year total funds
<i>Incoming resources</i>					
Donations, Legacies and similar incoming resources	—	—	—	—	—
Activities in furtherance of the charity's objects	1,500	36,008	—	37,508	25,160
Activities for generating funds	560	—	—	560	7,550
Other incoming resources	8,732	—	—	8,732	4,605
Total incoming resources	10,792	36,008	—	46,800	37,315
<i>Resources used</i>					
Costs of generating funds	—	—	—	—	—
Grants payable in furtherance of charity's objects	—	—	—	—	—
Activities in furtherance of the charity's objects	562	3,039	—	3,601	1,790
Support costs	520	—	—	520	2,172
Expenditure on managing-administering the charity	9,073	31,397	—	40,471	28,129
Total resources used	10,156	34,436	—	44,593	32,092
Net income / (expenditure)	635	1,571	—	2,206	5,223
<i>Transfers</i>					
Gross transfers between funds - in	—	—	—	—	4,200
Gross transfers between funds - out	—	—	—	—	(4,200)
Net income / (expenditure)	635	1,571	—	2,206	5,223
<i>Other recognised gains / losses</i>					
Gains / losses on investment assets	—	—	—	—	—
Gains on revaluation, fixed assets, charity's own use	—	—	—	—	—
Net movement in funds	635	1,571	—	2,206	5,223
<i>Reconciliation of funds</i>					
Total funds brought forward	25,637	20,468	—	46,106	40,883
Total funds carried forward	26,273	22,039	—	48,313	46,106

There may be minor discrepancies in the totals if the pence are not being shown

Home-Start Sittingbourne & Sheppey

Balance Sheet detailed

		As at 31/03/2021	As at 31/03/2020
Current assets			
	BANK: Bank Account	48,164.04	45,922.11
	BANK2: Investment Account	—	—
	BNK: Bank Account	—	—
	CASH: Cash in Hand	149.16	184.22
	Z05: Accounts Receivable	—	—
	Total Current assets	48,313.20	46,106.33
Liabilities			
	Z04: Accounts Payable	—	—
	Total Liabilities	—	—
	Net Asset surplus (deficit)	48,313.20	46,106.33
Reserves			
	Excess / (deficit) to date	2,206.87	5,223.20
	Z01: Starting balances	46,106.33	40,883.13
	Total Reserves	48,313.20	46,106.33

Represented by Funds		
Unrestricted	(281.20)	(281.20)
Designated	26,554.99	25,919.16
Restricted	22,039.41	20,468.37
Endowment	—	—
Total	48,313.20	46,106.33

Home-Start Sittingbourne & Sheppey
Fund movement by type
Selected period: 01 April 2020 to 31 March 2021

Fund and type	Fund balances brought forward	Incoming Resources	Outgoing Resources	Transfers	Gains and Losses	Journal Entries	Fund balances carried forward
CVD19							
Restricted	—	12,128.00	11,305.27	—	—	209.62	1,032.35
Sub-totals	—	12,128.00	11,305.27	—	—	209.62	1,032.35
FSWCRF							
Restricted	—	2,000.00	601.85	—	—	—	1,398.15
Sub-totals	—	2,000.00	601.85	—	—	—	1,398.15
FSWFF							
Restricted	—	4,500.00	—	—	—	—	4,500.00
Sub-totals	—	4,500.00	—	—	—	—	4,500.00
HSUKPFG							
Restricted	—	9,880.00	6,595.50	—	—	—	3,284.50
Sub-totals	—	9,880.00	6,595.50	—	—	—	3,284.50
NewCoord21							
Restricted	—	7,500.00	—	—	—	—	7,500.00
Sub-totals	—	7,500.00	—	—	—	—	7,500.00
PCLT							
Restricted	13,772.26	—	9,238.23	—	—	—	4,534.03
Sub-totals	13,772.26	—	9,238.23	—	—	—	4,534.03
TTF							
Restricted	6,696.11	—	6,696.11	—	—	245.55	245.55
Sub-totals	6,696.11	—	6,696.11	—	—	245.55	245.55
Core Designated							
Designated	—	3,000.00	748.00	—	—	—	2,252.00
Sub-totals	—	3,000.00	748.00	—	—	—	2,252.00
Twinsgroup Designated							
Designated	4,040.95	5,560.00	4,178.55	—	—	—	5,422.40
Sub-totals	4,040.95	5,560.00	4,178.55	—	—	—	5,422.40
OBS							

Fund and type	Fund balances brought forward	Incoming Resources	Outgoing Resources	Transfers	Gains and Losses	Journal Entries	Fund balances carried forward
Designated	1,298.29	1,232.00	1,820.50	—	—	—	709.79
Sub-totals	1,298.29	1,232.00	1,820.50	—	—	—	709.79
Sarahsfund							
Designated	—	1,000.00	619.62	—	—	—	380.38
Sub-totals	—	1,000.00	619.62	—	—	—	380.38
Reserve							
Designated	20,579.92	—	2,789.50	—	—	—	17,790.42
Sub-totals	20,579.92	—	2,789.50	—	—	—	17,790.42
General							
Unrestricted	(281.20)	—	—	—	—	—	(281.20)
Sub-totals	(281.20)	—	—	—	—	—	(281.20)
Totals	46,106.33	46,800.00	44,593.13	—	—	455.17	48,768.37

Home-Start Sittingbourne & Sheppey
Receipts and payments
Selected period: 01 April 2020 to 31 March 2021

Note	From To	01 April 2020 31 March 2021	01 April 2019 31 March 2020
BLRFSP - Big Lottery Ready For School Project (Restricted) Fund			
Payments			
Activities in furtherance of the charity's objects			
Craft Materials		—	59.66
Co-ordinator Expense		—	182.63
<i>Total Activities in furtherance of the charity's objects</i>		—	242.29
Expenditure on managing-administering the charity			
Postage		—	9.86
Salaries and NI		—	2,365.71
Telephone/Mobile/Internet		—	9.58
Volunteer Expenses		—	71.48
<i>Total Expenditure on managing-administering the charity</i>		—	2,456.63
Total payments		—	2,698.92
Excess of Incoming resources over Resources used		—	(2,898.92)
Brought forward balance		—	2,313.23
Transfers to/(from)		—	385.69

CVD19 - Covid19 (Restricted) Fund

Receipts			
Activities in furtherance of the charity's objects			
Covid-19		12,128.00	—
<i>Total Activities in furtherance of the charity's objects</i>		12,128.00	—
Total receipts		12,128.00	—
Payments			
Activities in furtherance of the charity's objects			
Craft Materials		685.67	—
Co-ordinator Expense		90.00	—
<i>Total Activities in furtherance of the charity's objects</i>		775.67	—
Expenditure on managing-administering the charity			
Family Support Worker Expenses		536.55	—
Food Vouchers or food gifts or plants		2,985.82	—
Photocopier		102.48	—
Pamper packs		30.00	—
PPE - sanitiser wipes cream masks		265.30	—
Rent		695.00	—
Repairs & renewals		618.99	—
Salaries and NI		5,131.36	—
Stat and Publication		3.00	—
Telephone/Mobile/Internet		161.10	—
<i>Total Expenditure on managing-administering the charity</i>		10,529.60	—
Total payments		11,305.27	—

Note	From To	01 April 2020 31 March 2021	01 April 2019 31 March 2020
	Excess of Incoming resources over Resources used	522.73	—
	Adjustments	209.62	—
	Total carried forward balance	1,032.35	—
EAP - Enjoy & Achieve Project (core) (Designated) Fund			
Receipts			
	Activities for generating funds		
	Enjoy & Achieve Project (core)	—	1,120.00
	<i>Total Activities for generating funds</i>	<i>—</i>	<i>1,120.00</i>
	Other incoming resources		
	Fundraising Donations	—	180.00
	<i>Total Other incoming resources</i>	<i>—</i>	<i>180.00</i>
	Total receipts	—	1,300.00
Payments			
	Activities in furtherance of the charity's objects		
	Co-ordinator Expense	—	283.34
	Membership Levy	—	372.76
	<i>Total Activities in furtherance of the charity's objects</i>	<i>—</i>	<i>656.10</i>
	Expenditure on managing-administering the charity		
	AGM costs	—	107.14
	Office General Exps	—	40.00
	Insurance	—	278.00
	Photocopier	—	145.57
	Postage	—	6.53
	Rent	—	695.00
	Salaries and NI	—	2,955.48
	Telephone/Mobile/Internet	—	499.32
	Volunteer Expenses	—	190.43
	<i>Total Expenditure on managing-administering the charity</i>	<i>—</i>	<i>4,917.47</i>
	Total payments	—	5,573.57
	Excess of Incoming resources over Resources used	—	(4,273.57)
	Brought forward balance	—	2,958.86
	Transfers to/(from)	—	1,314.71

FSWCRF - Fam Supp Worker Comic Relief grant (Restricted) Fund

Receipts			
	Activities in furtherance of the charity's objects		
	Fam Supp Worker Comic Relief grant	2,000.00	—
	<i>Total Activities in furtherance of the charity's objects</i>	<i>2,000.00</i>	<i>—</i>
	Total receipts	2,000.00	—
Payments			
	Expenditure on managing-administering the charity		
	Family Support Worker Expenses	51.85	—
	Salaries and NI	550.00	—
	<i>Total Expenditure on managing-administering the charity</i>	<i>601.85</i>	<i>—</i>
	Total payments	601.85	—

Note	From To	01 April 2020 31 March 2021	01 April 2019 31 March 2020
	Excess of Incoming resources over Resources used	1,398.15	—
	Total carried forward balance	1,398.15	—
FSWFF - Fam Supp Worker Foyle Foundation (Restricted) Fund			
	Receipts		
	Activities in furtherance of the charity's objects		
	Fam Supp Worker Foyle Foundation	4,500.00	—
	<i>Total Activities in furtherance of the charity's objects</i>	<i>4,500.00</i>	<i>—</i>
	Total receipts	4,500.00	—
	Excess of Incoming resources over Resources used	4,500.00	—
	Total carried forward balance	4,500.00	—
HSUKPFG - HSUK Pears Foundation Grant (Restricted) Fund			
	Receipts		
	Activities in furtherance of the charity's objects		
	HSUK Pears Foundation Grant	9,880.00	—
	<i>Total Activities in furtherance of the charity's objects</i>	<i>9,880.00</i>	<i>—</i>
	Total receipts	9,880.00	—
	Payments		
	Expenditure on managing-administering the charity		
	Office General Exps	4,880.00	—
	Salaries and NI	1,715.50	—
	<i>Total Expenditure on managing-administering the charity</i>	<i>6,595.50</i>	<i>—</i>
	Total payments	6,595.50	—
	Excess of Incoming resources over Resources used	3,284.50	—
	Total carried forward balance	3,284.50	—
NewCoord21 - New Co-ordinator 21 (Restricted) Fund			
	Receipts		
	Activities in furtherance of the charity's objects		
	New Co-ordinator 21	7,500.00	—
	<i>Total Activities in furtherance of the charity's objects</i>	<i>7,500.00</i>	<i>—</i>
	Total receipts	7,500.00	—
	Excess of Incoming resources over Resources used	7,500.00	—
	Total carried forward balance	7,500.00	—

Note	From To	01 April 2020 31 March 2021	01 April 2019 31 March 2020
PCLT - Parent & Child Learning Together (Restricted) Fund			
Receipts			
Activities in furtherance of the charity's objects			
Parent & Child Learning Together		—	16,500.00
<i>Total Activities in furtherance of the charity's objects</i>		<u>—</u>	<u>16,500.00</u>
Total receipts		—	16,500.00
Payments			
Activities in furtherance of the charity's objects			
Craft Materials		57.08	36.51
Co-ordinator Expense		235.60	99.90
Membership Levy		467.76	—
Publicity		—	13.00
<i>Total Activities in furtherance of the charity's objects</i>		<u>760.44</u>	<u>149.41</u>
Expenditure on managing-administering the charity			
AGM costs		60.00	—
Office General Exps		—	6.00
Insurance		415.00	—
Photocopier		240.48	102.48
Postage		9.69	30.18
Rent		695.00	—
Repairs & renewals		—	592.08
Salaries and NI		6,442.42	3,398.19
Stat and Publication		43.28	39.19
Telephone/Mobile/Internet		497.47	124.87
Vols Training & Conf		4.00	23.45
Volunteer Expenses		70.45	261.89
<i>Total Expenditure on managing-administering the charity</i>		<u>8,477.79</u>	<u>4,578.33</u>
Total payments		9,238.23	4,727.74
Excess of Incoming resources over Resources used		(9,238.23)	11,772.26
Brought forward balance		13,772.26	—
Transfers to/(from)		—	2,000.00
Total carried forward balance		4,534.03	13,772.26

SBS - Side by Side (Restricted) Fund

Payments			
Activities in furtherance of the charity's objects			
Co-ordinator Expense		—	351.61
Membership Levy		—	160.00
<i>Total Activities in furtherance of the charity's objects</i>		<u>—</u>	<u>511.61</u>
Expenditure on managing-administering the charity			
Insurance		—	245.00
Photocopier		—	204.96
Postage		—	17.93
Rent		—	660.00
Salaries and NI		—	5,539.12
Stat and Publication		—	27.02
Telephone/Mobile/Internet		—	195.57
Volunteer Expenses		—	583.11
<i>Total Expenditure on managing-administering the charity</i>		<u>—</u>	<u>7,472.71</u>

Note	From To	01 April 2020 31 March 2021	01 April 2019 31 March 2020
Total payments		—	7,984.32
Excess of Incoming resources over Resources used		—	(7,984.32)
Brought forward balance		—	7,984.32
TTF - Tampon Tax Fund (Restricted) Fund			
Receipts			
Activities in furtherance of the charity's objects			
Tampon Tax Fund		—	8,660.00
<i>Total Activities in furtherance of the charity's objects</i>		—	<i>8,660.00</i>
Total receipts		—	8,660.00
Payments			
Activities in furtherance of the charity's objects			
Craft Materials		669.71	—
Co-ordinator Expense		678.45	62.10
Membership Levy		155.00	—
<i>Total Activities in furtherance of the charity's objects</i>		<i>1,503.16</i>	<i>62.10</i>
Expenditure on managing-administering the charity			
Insurance		234.84	—
Photocopier		204.96	—
Postage		15.60	21.96
Pamper packs		22.50	—
PPE - sanitiser wipes cream masks		96.00	—
Rent		—	695.00
Repairs & renewals		112.49	—
Salaries and NI		3,989.03	1,415.32
Stat and Publication		12.83	31.37
Sundries		95.10	—
Telephone/Mobile/Internet		381.60	149.16
Toys		28.00	—
Volunteer Expenses		—	88.98
<i>Total Expenditure on managing-administering the charity</i>		<i>5,192.95</i>	<i>2,401.79</i>
Total payments		6,696.11	2,463.89
Excess of Incoming resources over Resources used		(6,696.11)	6,196.11
Brought forward balance		6,696.11	—
Transfers to/(from)		—	500.00
Adjustments		245.55	—
Total carried forward balance		245.55	6,696.11

Note	From To	01 April 2020 31 March 2021	01 April 2019 31 March 2020
Core - Core Account (Designated) Fund			
Receipts			
Activities in furtherance of the charity's objects			
Core Income		1,500.00	—
<i>Total Activities in furtherance of the charity's objects</i>		<u>1,500.00</u>	<u>—</u>
Other incoming resources			
FundraisingDonations		1,500.00	—
<i>Total Other incoming resources</i>		<u>1,500.00</u>	<u>—</u>
Total receipts		3,000.00	—
Payments			
Expenditure on managing-administering the charity			
Office General Exps		53.00	—
Rent		695.00	—
<i>Total Expenditure on managing-administering the charity</i>		<u>748.00</u>	<u>—</u>
Total payments		748.00	—
Excess of Incoming resources over Resources used		<u>2,252.00</u>	<u>—</u>
Total carried forward balance		2,252.00	—
Twinsgroup - Twins Group (Designated) Fund			
Receipts			
Activities for generating funds			
Twins Income		560.00	6,430.00
<i>Total Activities for generating funds</i>		<u>560.00</u>	<u>6,430.00</u>
Other incoming resources			
FundraisingDonations		5,000.00	477.00
<i>Total Other incoming resources</i>		<u>5,000.00</u>	<u>477.00</u>
Total receipts		5,560.00	6,907.00
Payments			
Activities in furtherance of the charity's objects			
Craft Materials		—	68.29
Co-ordinator Expense		—	10.69
Membership Levy		—	90.00
<i>Total Activities in furtherance of the charity's objects</i>		<u>—</u>	<u>168.98</u>
Expenditure on managing-administering the charity			
Food Vouchers or food gifts or plants		600.00	—
Insurance		185.00	250.31
Photocopier		—	102.48
Postage		—	25.82
Rent		695.00	695.00
Refreshments		4.65	54.38
Salaries and NI		2,464.62	2,761.13
Sundries		0.69	—
Telephone/Mobile/Internet		228.59	335.16
Volunteer Expenses		—	198.35
<i>Total Expenditure on managing-administering the charity</i>		<u>4,178.55</u>	<u>4,422.62</u>
Total payments		4,178.55	4,591.80

Note	From To	01 April 2020 31 March 2021	01 April 2019 31 March 2020
	Excess of Incoming resources over Resources used	1,361.45	2,315.20
	Brought forward balance	4,040.95	1,725.75
	Total carried forward balance	5,422.40	4,040.95
DBS - DBS checks (Designated) Fund			
Receipts			
	Other incoming resources		
	DBS Income	1,232.00	3,948.40
	<i>Total Other incoming resources</i>	<i>1,232.00</i>	<i>3,948.40</i>
	Total receipts	1,232.00	3,948.40
Payments			
	Support costs		
	DBS Payments	520.00	2,172.00
	<i>Total Support costs</i>	<i>520.00</i>	<i>2,172.00</i>
	Expenditure on managing-administering the charity		
	Postage	22.69	52.10
	Rent	—	35.00
	Salaries and NI	1,277.81	1,792.86
	<i>Total Expenditure on managing-administering the charity</i>	<i>1,300.50</i>	<i>1,879.96</i>
	Total payments	1,820.50	4,051.96
	Excess of Incoming resources over Resources used	(588.50)	(103.56)
	Brought forward balance	1,298.29	1,401.85
	Total carried forward balance	709.79	1,298.29
Sarahsfund - Sarah's Fund (Designated) Fund			
Receipts			
	Other incoming resources		
	Fundraising Donations	1,000.00	—
	<i>Total Other incoming resources</i>	<i>1,000.00</i>	<i>—</i>
	Total receipts	1,000.00	—
Payments			
	Activities in furtherance of the charity's objects		
	Craft Materials	457.43	—
	Co-ordinator Expense	104.85	—
	<i>Total Activities in furtherance of the charity's objects</i>	<i>562.28</i>	<i>—</i>
	Expenditure on managing-administering the charity		
	Equipment	57.34	—
	<i>Total Expenditure on managing-administering the charity</i>	<i>57.34</i>	<i>—</i>
	Total payments	619.62	—
	Excess of Incoming resources over Resources used	380.38	—
	Brought forward balance	—	313.12
	Transfers to/(from)	—	(313.12)
	Total carried forward balance	380.38	—

Note	From To	01 April 2020 31 March 2021	01 April 2019 31 March 2020
Reserve - Reserve Fund (Designated) Fund			
Payments			
Expenditure on managing-administering the charity			
Salaries and NI		2,789.50	—
<i>Total Expenditure on managing-administering the charity</i>		<u>2,789.50</u>	<u>—</u>
Total payments		2,789.50	—
Excess of incoming resources over Resources used		(2,789.50)	—
Brought forward balance		20,579.92	24,467.20
Transfers to/(from)		—	(3,887.28)
Total carried forward balance		17,790.42	20,579.92
General - General fund (Unrestricted) Fund			
Brought forward balance		(281.20)	(281.20)
Total carried forward balance		(281.20)	(281.20)