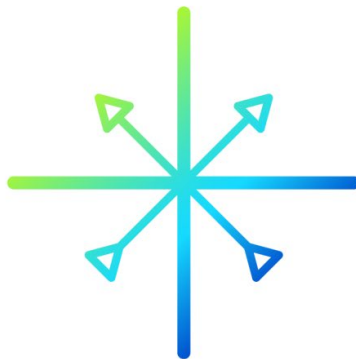


Annual Report And Financial Report 2025



KINDNESS COMPASSION COMMUNITY
IN CHRIST'S LOVE

St Giles Church

Exhall

CV7 9GZ

www.stgileschurchexhall.info

Annual Report

Table of Contents

Agendas for AMP and APCM	4
1. Vicar's Reflections	5
2. Minutes of 2025 APCM	8
3. Reports on Structure, Governance and Management	11
Proceedings of the Parochial Church Council	
Changes to the Electoral Roll	
Safeguarding	
Fabric, Goods and Ornaments of the Church	
Green Genies	
Meadow Working Group	
Halls Management	
Finance and Stewardship	
4. Reports on Worship and Prayer	16
Ministry Leadership Team	
Children and Families Work	
Choir	
Worship Band	
Bellringers	
Schools' Ministry	
Home Groups	
Deanery and Diocesan Synod	
Prayer Chain	
5. Reports on Pastoral Care	21
Pastoral Care Team	
Bereavement Drop-in	
Residential Care Homes	
Hospice Support Group	

6. Growing Faith Ministry	22
Chatty Crafters	
Mothers' Union	
Community Partnership Group	
Parish Magazine	
Parish E-Communications	
Drama Club	
Exhall Over 50s' Club	
7. Ecumenical Relationships	27
Bedworth Churches Together	
Ash Green Residents Association	
8. Financial Report (separate document)	

Annual Parochial Church Meeting
Sunday May 10th at 10.30am
St Giles Main Hall

This meeting includes the Annual Meeting of Parishioners (AMP) and the Annual Parish Church Meeting (APCM).

We begin with a time of prayer and worship.

Minutes of last year's meetings are available in this Annual Report

AGENDA

Annual Meeting of Parishioners (AMP)

- 1 Opening Prayer
- 2 Appointment of Secretary for the APM and APCM
- 3 Apologies for Absence
- 4 Approval of Minutes of the Annual Meeting of Parishioners 2025
- 5 Election of Churchwardens
- 6 Thanks and Closing Prayer

AGENDA

Annual Parish Church Meeting (APCM)

- 1 Minutes of APCM 2025
- 2 Matters arising
- 3 Presentation of Electoral Roll
- 4 Elections to:
 - Parochial Church Council – at least 3 to be elected
 - Deanery Synod Representatives – 5 vacant places
 - Ex-officio Reader Representative(s)
- 5 Appointment of PCC Secretary and Treasurer
- 6 Appointment of External Examiner(auditor)
- 7 Presentation of Annual Reports

(These are distributed in the APCM Annual Report and read prior to the meeting)

- Reports on the activities of the PCC and the parish generally
 - Report on the fabric, goods and ornaments of the church
 - Report on the proceedings of the Deanery Synod
 - Financial Report
 - Safeguarding Report
- 5 Matters arising from Annual Reports
 - 6 Vicar's Remarks
 - 7 Any other business *(Chair to be notified at least 24 hours before the meeting)*
 - 8 Closing Prayer

1. Vicar's Reflections

'I planted the seed, Apollos watered it, but God has been making it grow . . . For we are fellow workers in God's service; you are God's field, God's building.' (1 Cor. 3: 6 & 9)

Since 2024, we have regularly used the Leading Your Church into Growth prayer in our services which includes these words:

'Help our church to grow in numbers, in spiritual commitment to you and in service to our local community, through Jesus Christ our Lord. Amen.'

As ever, God is faithful in answering our prayers and 2025 has been a year of growth for us in a number of ways. You can read more about this in other sections I have written in this report, particularly around Worship Services and Exploring Faith; the Ministry Leadership Team; and Growing Faith, including Children and Families, Youth and Schools Ministry. There is much to be thankful for and I'm grateful to every member of St Giles who plays their part in 'watering' seeds that have been planted, whether from many years ago or more recently, to welcome and enable this growth as fellow workers together in God's harvest field.

Jesus himself said, 'The harvest is plentiful, but the labourers are few.' (Luke 10: 2). After many years of a narrative of decline in the Western church, there are encouraging signs that the tide is turning, with a significant rise in those taking an interest in authentic Christian faith and encounters with Jesus. This includes people of all ages, and particularly those born between 1981 and 1996 (Millennials) and 1997 and 2012 (Gen Z).

These hopeful developments are being described as a 'Quiet Revival', and it is exciting to be seeing signs of this at St Giles as well. In the UK there are now 2 million more people attending church than was the case six years ago. Sales of the Bible in the UK have surged to record highs with an increase of 134% since 2019. As C S Lewis wrote in the Narnia Chronicles, 'Aslan is on the move'. Our challenge is to be ready, open and responsive to join in with this amazing work of the Spirit in our times. Every welcome we give, every role we volunteer for, every prayer we pray, every person we invite to join us at church events makes a significant difference, waters another seed, and encourages the growth God is bringing.

Throughout this year, we have continued to work towards the goals identified in our Focus Areas for 2024/2025 under the umbrella of 'Growing in God – Seeking and Sharing Life in all its Fullness' (see our Focus Tree on page 7). Many of these are still a work in progress and we'll be re-visiting them in 2026, with the PCC identifying Accessibility as a main priority for us in the year to come.

We are incredibly blessed at St Giles to have the support of paid staff – Penny, our Parish Administrator; Sarah our cleaner and most recently Katie our Growing Faith Family Worker.

I want to take this opportunity to thank them for providing a vital framework for our ministry and outreach at St Giles, helping us to widen our field of influence for the gospel, ensuring vital bases are covered so that our time and energy can be more focussed on mission. I'm so grateful to Penny for the faithful work she does in maintaining our rotas and in producing this report, amongst so many other things.

In addition, our network of regular, committed and consistent volunteers is invaluable to the life of St Giles across a whole range of areas. This report, and the ministry and community outreach it represents, is testament to the fruit of your hard work and dedication. Please know how much this is valued and appreciated by me and all the church family.

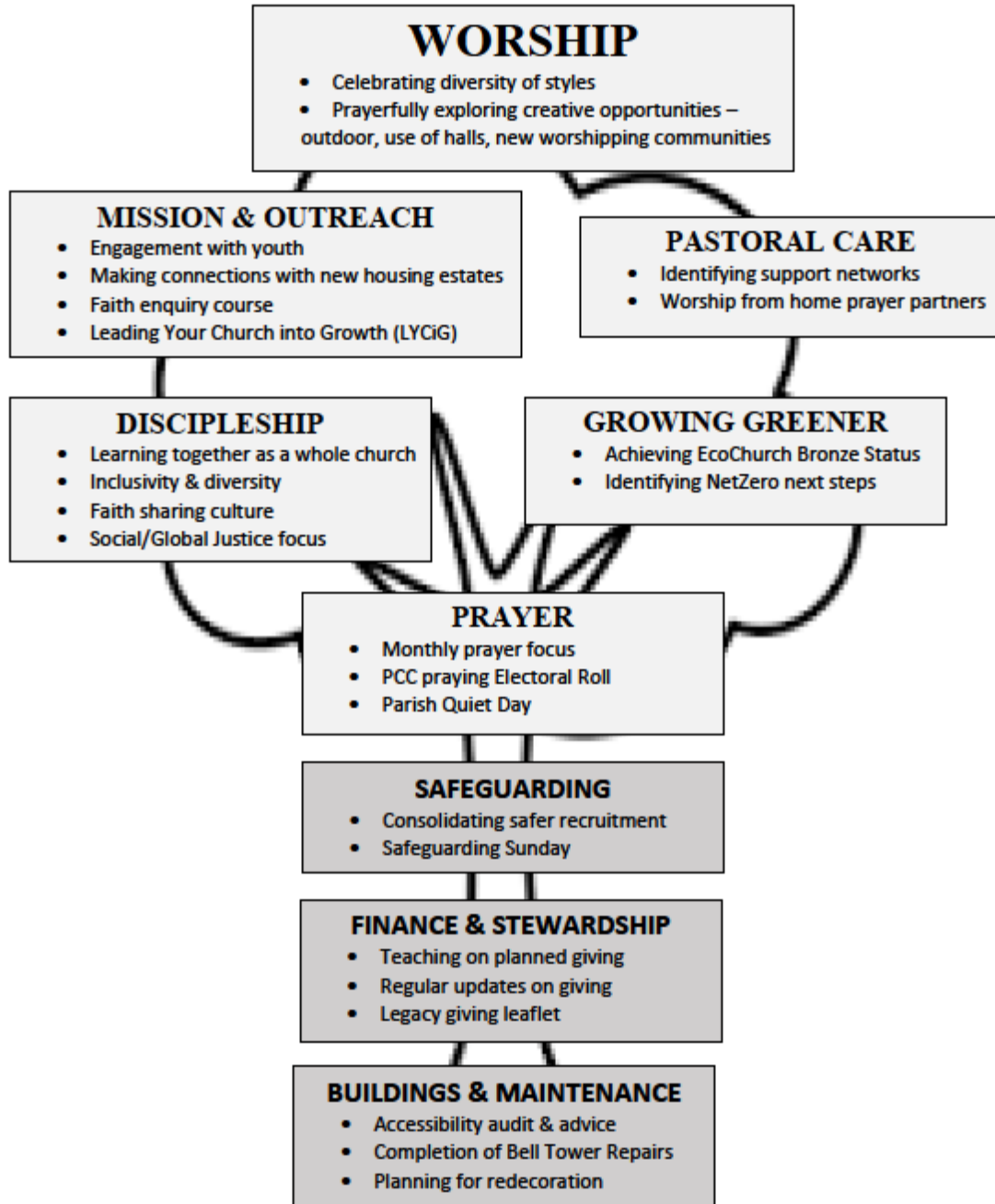
Finally, I'd like to add special thanks this year to John Owen who has survived and thrived under numerous vicars over 40 years as a Reader at St Giles, with steadfast support from Beryl. John's ministry in preaching and leading at services with his natural warmth, faith-filled wisdom and humour has been an enormous blessing to us. We are so grateful that he will continue to play an active part in church life as he moves into a new season as Reader Emeritus.

Rev Gail Phillip

FOCUS AREAS

2024/2025

Growing in God - Seeking and Sharing Life in all its Fullness



2. Minutes of the 2025 Annual Parochial Meeting

Apologies:

Kay and Peter Aldersley; Irene Tyler; Helen Anderson; Chris Wilson; Tina and Steve Watkins; Katherine Parker; Karen White; Paul and Maya Lanchbury

- 1 Opening prayer
- 2 Appointment of secretary for AMP and APCM
Carol Gough stood down after 10 years serving as PCC secretary, but she will remain on the PCC. Heartfelt thanks were expressed to Carol with a gift of flowers. There was much applause for Carol's decade of hard work and loyal service.
Penny Pallett was proposed to act as secretary for this meeting by Rev Gail Philip and seconded by Carol Gough. Apologies (as above)
The minutes of the last meeting were approved by Rev Gail Phillip and seconded by Sam Jones.
- 3 **Election of Church Wardens:** Nominations were received for Nikki Smith - proposed by Brian Inott and seconded by Anna Standing, and Jayne Pagett - proposed by Sam Jone and seconded by Neil Harris. The vote to elect Nikki and Jayne as Churchwardens was unanimously carried. Thanks were also given to Yvonne Knowles for her many years as part of the wider Church Wardens' Support Team (CWST). Although she has decided to step back from the team, she will continue to help and serve at St Giles. Thanks were also given to Neil Harris who stepped after two years as our Churchwarden but will continue to help and support where he can and continues on the CWST. Neva Khan has also stepped down from her Church Warden's roll because her career is taking her overseas, although she will continue to support St Giles when she is home.

- 4 Thanks and closing prayer.

APCM

- 1 **Minutes** of APCM 2024 – accepted as accurate duly adopted, as proposed by Rev Gail Phillip, seconded by Neil Harris and unanimously accepted by the meeting. There were no matters arising
- 2 **Electoral Roll by Beryl Owen**
Beryl explained that the Electoral Roll has to be completely revised every six years and everyone who appears on the roll must fill in a new form and be re-entered on revised version. The revised version has eight new members and stands at 133, although sadly we have lost Rosemary Little, Pat Richardson and Jean Hollis since the new roll was completed. The new roll is 40 people down from the previous one. Rev Gail thanked Beryl for undertaking this mammoth task and she was presented with flowers.

3 Elections and Appointments:

PCC

Nominations were received from Kathryn Unsworth, Steve Watkins, Tina Watkins and Katherine Parker. The meeting agreed unanimously to elect those nominated to join the PCC.

4 Deanery Synod

Having served for many years, Viv Hopkins has decided to step as a deanery synod representative. She was thanked for her years of loyal service with a gift and much applause.

Gwyneth Carter is continuing in her role and Andy Clark was elected unanimously after being proposed and seconded by Rev Gail and Carol Carrier. As synod members they automatically sit on the PCC.

5 Reader Representative

John Owen remains the Reader representative

6 Treasurer

Stephen Carter was proposed and seconded by Rev Gail and Kathryn Unsworth to continue as our Treasurer and this was unanimously accepted. Stephen is looking for someone to train up for and into the role.

7 Independent External Examiner

Gavin Kibble was proposed by Rev Gail Phillip and seconded by Andy Clark to continue in the role and this was accepted unanimously.

8 Standing Committee

This committee comes together to make urgent decisions between PCC meetings as and when needed. The Standing Committee will be finalised at the first PCC meeting after the APCM.

9 Presentation of Annual Reports

Finance - Stephen Carter (Treasurer)

We were told that the statement of financial activities looks as though we are up in terms of assets, but we must not let this give us a false sense of security. The increase was due to the of revaluation 22 Coventry Road, which went up by £70,000. So, it may look like we have more assets, but it is purely due to the valuation of the house.

The church's General Fund is down by at £10,000 which is very close to the limit we set ourselves for our reserve policy. The reduction in our General Fund and reserves continues to be of concern.

We managed to find our £55k Parish Share but it meant digging into the reserves to do it. This figure falls short of the actual and full cost of ministry (£65k) by at least £10k.

With the actual cost of ministry at £65k and general church running costs, including salaries, at £35k our overall operating costs exceed £100,000 pa. This figure excludes work on church buildings which are covered by different fund.

We have set our Parish Share contribution for 2026 at £25k and will give more if we are able. We might be able to manage a further £5k by the end of 2026.

We are very blessed to have a full time Minister at St Giles and need to recognise that we are no longer contributing what it costs in real terms to cover this post.

We cannot draw on reserves indefinitely and so increasing our income, through regular planned giving and in other ways continues to be vital.

10 Safeguarding

Our Safeguarding Action Plan is reviewed annually and kept up to date with the help of the Safeguarding Dashboard. Safeguarding is included as an item on the PCC agenda at each meeting and our Parish Safeguarding Officer, Muriel Ganley, attends whenever possible to provide an update and to highlight any areas we need to address. This includes ensuring appropriate safeguarding measures are in place for all the activities run by those who hire our church halls.

11. Vicar's Remarks

Rev Gail said that we are enormously grateful for what people give but there is still a need to increase our income. We are grateful for fund raising events like Andy Clark's quiz nights and the Christmas Bazaar.

St Giles is a very generous in community fund-raising too. The Chatty Crafters' VE Day raised £1,000 for Combat Stress and we are thankful to everyone involved in the hospice coffee mornings and everything that raises money for other organisations, but we must also be mindful of the church's own financial situation.

Rev Gail thanked Penny Pallett for preparing the annual report each year and thanked everyone involved in the smooth running of the church and all its activities.

Thanks and applause were offered for everyone involved.

11 Any Other Business – no matters arising

12 Closing prayer

3. Reports on Structure, Governance and management

Proceedings of the Parochial Parish Council (PCC)

There are seventeen serving members on the PCC. These have included thirteen elected members and three ex-officio members. Neva Khan, Church Warden, left the PCC in January 2025 to work for GOAL, based in Ethiopia. Parish Safeguarding Officer Muriel Ganley and Treasurer Stephen Carter attend meetings but have no voting rights. Elected PCC Members automatically become Trustees of St Giles as a registered charity (Charity No. 1146348) and are registered with the Charity Commission as such.

During 2025 we held eight PCC meetings. The October meeting was cancelled in order that members could attend a social evening at St Nicolas, Nuneaton, to meet Bishop Sophie on her tour of the Nuneaton Deanery. There have been four occasions when Standing Committee approval was sought for urgent items.

Those standing down this year as their three-year term of office is ending are Susan Barnes, Anna Standing and Emma Flint. Thank you to them for their time and contributions to meetings over the past three years. We now look forward to welcoming new members at our APCM.

PCC meetings have regular agenda items – updates on Mission and Ministry, Finance and Stewardship, Safeguarding and Buildings & Maintenance, individual reports on which can be found within this report.

Key items of business during the year were:

The Quinquennial Inspection was carried out

Growing Faith Family Link Worker – a post working to link home, school and church, increasing the work in our schools. Following a lengthy recruitment process, and with funding provided by the Nicholas Chamberlain Trust, Katie Baker was appointed to take up this role from January 2026. We look forward to working with her to enhance our connection with children and young people in our community.

Youth Impact – there is now a regular weekly “hot chocolate session” followed by a youth club in the church hall on Thursdays, term-time only.

A Visioning Day was held for PCC and the wider church family. This was a follow-up to the courses run through Lent – Leading your Church into Growth. Discussions were held around the core values under the headings of GOD (Magnify/Worship, EACH OTHER (Maturity/Discipleship) and OTHERS Mission (Community/World). Andy Clark volunteered to take on the role of Accessibility Co-ordinator temporarily to continue our plans to ensure our church is open to different needs and notice if there is action we could take to improve accessibility. A statement on our website was approved – “we are a church seeking to reflect Jesus’ generous invitation and welcome to all, whether in terms of physical or mental health, additional needs, gender or sexuality, age, ethnicity or background – all are welcome.”

Though Andy stepped back from this role later in the year, the PCC as a whole continues to prioritise the need to enhance and improve accessibility at St Giles.

PCC approved the purchase of a new website which will integrate with *iknowchurch* and *achurchnearyou*, two systems used by St Giles.

The Start Course was attended with great enthusiasm and was followed up by another course during Advent, *Watching and Waiting*.

Tina Watkins (PCC Lay Chair and Secretary)

Electoral Roll

In 2025, under the Church Representation Rules, the previous Roll was set aside. This happens every six years and a new Roll was completed. There are now 131 people on the Roll, 69(2A) living in the parish, 61(2B) living outside the parish but are regular worshippers and 1(2C) attending who has been confirmed within another church.

We remember at this time, members of our church community who have died this year: Rosemary Little, Pat Richardson, Jean Hollis, Mary James, Brian Stamper, Shirley Phillips and Stan Clarke. They were much loved and will be greatly missed.

Please inform the Electoral Roll Officer or the parish office of any change in personal details, especially change of address.

Beryl Owen – Electoral Roll Officer

Fabric, Goods and Ornaments

This has been a busy year for us at St Giles Church. There has been lots of work going on in many areas to ensure effectiveness and safety for all who attend. The work on the bell tower was completed and the scaffolding removed.

In July the five-year quinquennial inspection was completed on the church. The results showed no major work was needed. However, we will need to continue to follow up on the other repairs/ maintenance work that was suggested. During July a structural survey was carried out on the main hall together with an up-to-date asbestos survey which paved the way for improvements to the hall in coming years.

During August the annual inventory of the church contents and articles was completed to ensure that all items were accounted for within the church building. Over the past year there has been some essential work carried out within the churchyard to maintain a safe space for people to visit.

Some trees needed to be trimmed back and two trees needed to be removed completely due to the risk they posed, this followed List B permission and approval at PCC. Over the winter months, whilst the heating is on in church, there is a concern that the radiator positioned by the pigeonholes/children's play area becomes hot to touch therefore, to reduce the risk of injury, we will be arranging for a radiator cover to be installed.

The gate post on the path that leads out to Bell Drive is broken and arrangements for its repair are underway. It is important that routine maintenance and safety checks are

completed in a timely manner, for example electrical system check, gas boiler etc over the next year. We look forward to another busy and exciting year ahead at St Giles Church.

Church Wardens' Team

Finance and Stewardship

The purpose of the Finance and Stewardship Committee is to assist the PCC and the incumbent in the responsible management and stewardship of the church's financial resource. Its business was conducted through occasional exchanges between members for decision making. The main focus was to continue to closely monitor income and expenditure and make recommendations to the PCC as to how best to optimise our finances.

After consultation with congregation members, we made recommendations to the PCC for our charitable giving. There was also consultation, together with PCC, around our Parish Share contribution for 2025. We had committed to offer £25,000 in 2025 (significantly less than the actual cost of ministry which now stands at around £65,000 per year). Thanks to regular and generous giving, we were able, to meet this payment and to give an additional £10,000 at the end of the year, making a total contribution of £35,000 (compared to £55,000 in 2024).

Our ongoing structural deficit continues to be a significant concern and means continued vigilance is needed in 2026 and beyond. We continue to look to God for guidance and to trust in His abundant grace and goodness.

Stephen Carter

Committee members: Stephen Carter, Denise Crampsie, Rev Gail Phillip

Safeguarding

St Giles Church complies with the Church of England Safeguarding policy, *Promoting a Safer Church*, which was first adopted as our parish policy in December 2018 and is re-approved by the PCC each year. The PCC has complied with the duty under Section 5 of the Safeguarding and Clergy Discipline Measure 2016 to have regard to House of Bishop's guidance on safeguarding children and vulnerable adults.

Our Safeguarding Action Plan is reviewed annually and kept up to date with the help of the Safeguarding Dashboard. Safeguarding is included as an item on the PCC agenda at each meeting and our Parish Safeguarding Officer, Muriel Ganley, attends whenever possible to provide an update and to highlight any areas we need to address. This includes ensuring appropriate safeguarding measures are in place for all the activities run by those who hire our church halls.

A healthy church culture lies at the heart of all good safeguarding practice, including the understanding that all of us have a vital part to play, and shared responsibility, in ensuring everyone can participate safely in the life and ministry of St Giles. We continue to review and develop our practice around the National Church of England Safeguarding Learning and Development Framework's five key standards:

- Culture, Leadership and Capacity
- Prevention
- Recognising, Assessing and Managing Risk
- Victims and Survivors
- Learning, Supervision and Support

This year Muriel, with kind assistance from Yvonne Knowles, made significant progress in setting St Giles up with our own Safeguarding Hub account. This is an on-line tool which enables information connected with safer recruitment and management of all volunteers to be held securely in one place and to keep track of DBS and training requirements when they become due, including providing automatic reminders. We are extremely grateful to Muriel and Yvonne for their diligent work on this. Whilst entering the initial data is very time consuming, in the longer term this will make the administration around safeguarding requirements much easier to manage.

Thanks must also go to all our volunteers who regularly and willingly undertake the necessary safeguarding training and checks for the role(s) they undertake. We simply could not run the range of activities we do without this commitment. In October, Muriel worked closely with Liam McCormack, our Diocesan Safeguarding Training Advisor, to run safeguarding training sessions which we hosted here at St Giles. These local opportunities for in-person, rather than simply on-line training, were well received by our own volunteers as well as from others across the diocese.

In August 2025 APCS, the company contracted by our diocese to administer our DBS checks, sadly reported a data breach which affected many volunteers across our diocese and beyond, including four from St Giles. Support was provided with guidance from the diocese and, thankfully, we are not aware of any adverse effects for those from St Giles whose data was breached. DBS checks for parishes in our diocese are now administered by Thirtyone Eight and I'm grateful to Muriel for getting to grips with a new system as a result of this change to ensure all the DBS checks we need are completed in a timely way.

In November 2025 we marked National Safeguarding Service using material from Thirtyone Eight to continue to ensure safeguarding has a high profile as a gospel imperative across all our congregations at St Giles. An independent audit of safeguarding across the Diocese of Coventry will be undertaken by INEQUE in July 2026.

Rev Gail Phillip

Green Genies

We met up several times last year to tidy up the churchyard, weed the borders, clear old unattended graves and generally try to keep the churchyard looking nice for visitors to see.

The June meeting's main task was to plant out approximately 650 begonias (once again grown on and supplied by Stella). The young plants were some of the best yet, but the intense sun/ heat of the summer didn't do them any favours (you just can't win sometimes), but the weather did seem to suit the roses, let's hope for more suitable weather this year.

Our meetings are advertised through the weekly news sheet for any who would like to join us as all help is very much appreciated.

Stella Bunting, Jackie and Robert West

Halls Management

During 2025 most of our regular users have continued with their activities in the main hall, namely Exhall Ringcraft (dog training), Tai Chi, Over 50s, GKR Karate, evening Zumba and children's dance classes. Rhythm Time, a music activity for babies and children, started in September on Fridays, term time only. The Drama Club also met there between September and February. The small hall is used less often, but Mothers' Union and the Bereavement Drop-in Group along with Chatty Crafters are regular users.

Although several groups are classed as outreach and do not pay a hire charge, these organisations kindly give a donation each year towards the use of the hall.

There has been a steady stream of ad-hoc bookings over the year, ranging from children's parties to a Seed Swap event.

Unfortunately, the heaters have continued to be unreliable, with elements still needing to be replaced. These heaters have been discontinued so replacement elements are no longer available. Consideration needs to be given to how to manage this situation. Please pray for funds to be available to keep our elderly hall running for a long time to come.

Tina Watkins – Hall Manager

Meadow Working Group

In the late summer of 2025, it was decided to re-align the footpath at the car park side of the meadow. This involved moving the soil bank back and trimming the trees along the fence. It is now hoped that the bank will be maintained along the length of the fence and not built up near the gateway. The path has been sown with grass seed and we have planted wild flower seed on the bank itself. The centre of the meadow was cut at the end of the year, allowing time for flower seed to fall and set.

The Exhall Miners' Memorial was ten years old in September 2025 and the Bedworth Society felt that this should be marked. Two of the Silver Birch trees had died and so these were replaced and the families of those miners named on the memorial were invited to a short service of commemoration.

Kathryn Unsworth and Steve Watkins

4. Reports on Worship and Prayer

Worship Services and Exploring Faith

Our regular pattern of services offers both a range of times to worship together and a variety of worship styles to encourage as many as possible, of all ages, to be able to engage in worship in a meaningful way and to develop confidence in sharing their faith with others and in action.

At least 14 people have joined us as new members of the church family over the year. A particular highlight was supporting eight people to be confirmed in 2025, ranging from ages 8 – 85. It has also been encouraging to see people who have linked with St Giles initially through Chatty Crafters, Bereavement Drop-in and other activities begin to attend worship services on a regular basis. This is just some of the fruit of our Leading Your Church into Growth emphasis on Prayer, Presence, Proclamation and Persuasion.

Our overall worshipping community grew to 190 from 148 last year. Our average weekly attendance for adults remained consistent with last year's, though children's attendance fell somewhat. This may suggest that, whilst our church community is growing as a whole, people's attendance may be once or twice a month rather than weekly.

Looking at the make-up of our church family, 70% are aged over 70, 22% aged 18 – 69, and 7% under 18. This highlights the need for us to continue to find effective ways to reach people of all ages with the good news of Jesus and to ensure we are all involved in helping newcomers feel welcome so that they can find a place of belonging at St Giles.

We ran our first Start Course in October and were delighted to journey together with 12 people through six weeks of exploring Christian faith around the themes of Life, God, Mess, Jesus, Cross and Onwards. Most of those who joined were new to St Giles. Those who attended found the course so enjoyable that they were keen to continue meeting together in 2026 and our Wednesday Explorers group has emerged from this.

Another encouragement has been to see a significant increase in attendance at our Christmas and Easter services this year. In 2025 we ministered at 21 Funerals, 5 Marriages and 7 Baptisms and some of the connections made through our occasional offices remain on-going.

We continue to offer a Midweek Communion Service on the first Wednesday of each month and attendance has increased over the year. A small group meet consistently from Monday to Thursday at 8 am for Morning Prayer. We take this opportunity to pray especially for those in particular need, those of our church family who are now housebound and for those on our prayer chain. We are grateful to Neil Harris and John Owen who continue to lead Compline every Tuesday evening at 7pm as an opportunity for quiet worship, reflection and prayer.

Rev Gail Phillip

Ministry Leadership Team

The Ministry Leadership Team (MLT) meets on a regular basis to plan our worship ministry. We also take time to reflect and share constructive feedback on how things are going around our various regular worship services. All our different congregations are well represented at these meetings and in our service planning.

The team includes all those who lead and preach at our services, as well as those who lead our choir and worship band. This enables us to plan creatively and to reach decisions from a range of perspectives, as well as providing mutual support to one another in our various roles.

A particular joy this year has been to see our lay ministers developing increasing confidence, skill and creativity in preaching and leading, and flourishing in using their gifts in this way. Please pray for them on this journey and for others to join them! Our choir and band leaders have worked together to provide additional opportunities for our children and young people to be more involved in music ministry at seasonal services which has been well received.

Without the steadfast support and commitment of our lay ministers, we would not be able to offer the frequency and range of services we do at St Giles. This also includes all those who support our worship ministry through their willingness to serve in welcoming at the door, leading our bible readings, leading prayers and serving refreshments. We are extremely grateful for those who commit to being on our service rotas so faithfully and frequently and hope this team will grow in 2026.

Our MLT has been greatly enriched by the wisdom and experience of John Owen who faithfully served as a Reader at St Giles for 40 years and made the decision to step back from this ministry from the beginning of Advent 2025. The team will miss John and wish him well as he goes forward into a new season of worship and ministry as part of the St Giles' family.

Rev Gail Phillip

Bell Ringers

Bell ringing has a long history at St Giles. Bells were first installed in the 18th century with three bells in the tower. These bells were recast in 1900 and three more bells added in 1920 to make a ring of six. We have a band of seven ringers who meet to ring the bells on Sunday mornings and some weddings throughout the year. Bell practice normally takes place on Thursdays, except the 3rd Thursday of each month.

Bell ringing is an important part of church life as it heralds the start of morning services and other events and new members are always welcome.

Steve Watkins Tower Captain.

Choir

The choir has continued to support our worship over another year. As well as providing special music at seasonal festivals it has also on some Sundays offered short pieces during communion. We have also been asked to sing at some funerals.

In the autumn we were joined by the bellringers for a day out in Stratford which included a tour of the Royal Shakespeare Theatre. In the afternoon we were thrilled to be able to visit Rev Jo Parker at Snitterfield for afternoon tea. The ringers rang and the singers sang in her church before sharing tea and cakes in the church hall!

In the past six months we have been pleased to welcome the young people in church to join us to sing at special services. They learnt songs for harvest and Christmas and we look forward to having them sing with us again on future special occasions.

We would love to welcome new members, especially sopranos. So if you enjoy singing and think you would like to be involved, please just come along to our practice on a Friday evening from 7pm or speak to Kathryn.

Kathryn Unsworth – Organist & Choir Leader

Worship Band

St Giles church Worship Team has been blessed with yet another great year of sharing worship with both the congregation of our 11.45am *Sunday Celebration!* service and at the monthly 10.30am joint service.

While our team remains small (and new members are always welcome) we have welcomed talented guitarist Gary Griffith into the band.

Moving forward this year, the Worship Team look forward to new challenges whatever they may be. We are still seeking someone with an interest in audio-visual technology to help manage our sound system and visual presentations. This is something we have lacked for years and find it quite challenging sometimes as we are trying to manage this live whilst providing music during the services. If you are interested then please make us aware.

We look forward to planning a number of evening events to open our worship time and outreach together in a more informal environment.

James Harden and Roy Edwards

Home Groups

Vicarage Home Group

There are two home groups, held on alternate Tuesdays – one at the Vicarage and the other at a Church member's home. Both groups study the same material.

During 2025 we studied three different subjects - Spiritual Formation, The Creeds and Psalms. The Vicarage Home Group, held after Tuesday Compline, begins with a hot drink and some 'good quality' biscuits! We spend a few moments 'catching up' with each other before beginning our study. We are given background information to the subject, followed by the reading of the Bible passage with ample time to discuss the questions raised in the subject material.

Booklets and other resource material is available for private study during the week. At the close of the evening we pray around our learning and there is an opportunity to raise personal prayer requests.

Home Groups give a wonderful opportunity to 'dig deeper' into Scripture and explore our faith as well as getting to know members of our Church Family in a relaxed atmosphere. If you have not been part of a Home Group in the past I would recommend you give it a go!

Kay Aldersley

Chris Wilson's Home Group

This home group also meets on a Tuesday Evening at 7.30pm on the alternate weeks to the Vicarage Home group. We usually study the same materials. At present, we either meet in Nunts Lane or Manse Close. This is decided from meeting to meeting but each member receives an e-mail before the meeting confirming venue, time and subject matter.

In 2025 we studied three different subjects. January – February, *Spiritual formation*, May – July, *The Creeds* and September – November, *Psalms*. Each meeting begins with a "How are you?" We then share the Bible passage and discuss it using the given materials, finishing the meeting with a song, prayer time and refreshments.

In April our beloved sister in Christ, Pat Richardson (a stalwart member of our group) went to be with the Lord. We miss her very much and give thanks for her friendship and valuable contributions to our times together. These words from 2 Corinthians 4 were read at her funeral service and remind us of why we meet together.

Therefore we do not lose heart. Though outwardly we are wasting away, yet inwardly we are being renewed day by day. For our light and momentary troubles are achieving for us an eternal glory that far outweighs them all. So we fix our eyes not on what is seen, but on what is unseen, since what is seen is temporary, but what is unseen is eternal.

Chris Wilson

Prayer Chain

The prayer chain consists of a group of 13 people who undertake to pray for people in the church, community and beyond. The requests come in from church members, loved ones or friends and a reason is usually given but this is not essential. God knows every person and their needs. At present we have over 40 names on our list.

When a request comes in it is sent round the chain via e-mail immediately. All information is treated with the utmost confidentiality. A complete list of all requests is compiled and updated fairly regularly and sent out as a reminder to keep praying. We have had some very heart-rending needs over the past year and also some wonderful answers to our prayers.

It is a privilege to be a part of this ministry and if you feel you would like to be part of the chain please get in touch with Chris. Many thanks to this faithful band of pray-ers who pray wherever they are and whenever they can.

Prayer changes things: Those who wait for the Lord shall renew their strength, they shall mount up with wings like eagles, they shall run and not be weary, they shall walk and not faint. Isaiah 40:31

Chris Wilson

Deanery Synod

Three meetings were held during 2025, in February at All Saints Bedworth, in June at St Andrew Shilton and in November at Holy Trinity Attleborough. The meetings were well attended and the topics covered were varied and interesting. Each meeting includes deanery and parish news and an update on the Mission Hub based at All Saints.

February Meeting:

The main speaker was Anna Naish who spoke about Lay Training and Training Pathways in the Diocese. She emphasised the importance of noticing people and the gifts they have, and she encouraged people to try things out. More information is available at www.equiphub.org.uk

June Meeting

Rev. James Lawrence spoke about the Bible Society's research which resulted in the Quiet Revival report. He stressed the importance of being welcoming to newcomers and of training welcomers. He also suggested churches should check their websites and *Church Near You* entries. Are they up to date and do they make sense to non-churchgoers?

November Meeting

Deanery members gave feedback about Bishop Sophie's visit to the deanery in October which had ended with an open meeting at St Nicolas' Church in Nuneaton.

The speakers for this evening's meeting were Rev Daniel Corlett who heads up the Rural Mission Hub based in the Alcester Minster group of eight churches, and Rev Katie Cross who is rector of the Alcester Minster group. They spoke of the successes, joys and challenges of rural church ministry.

Gwyneth Carter

Deanery Synod Reps: Viv Hopkins (up to APCM 2025) Andy Clark (from APCM 2025) and Gwyneth Carter

5. Reports on Pastoral Care

Bereavement Drop-in

I am delighted to report yet another year of this vital group going from strength-to-strength with numbers increasing. We meet fortnightly in the small hall for chats and quizzes plus tea/coffee and amazing cakes brought by members. When we don't meet in the hall we go out for pub lunches and other trips.

We aim to provide friendship and support for everyone going through loss and grief and while we do have fun, great chats and amazing fellowship, we never forgot our key purpose of providing support to people going through a bereavement so there is always a chance to talk to someone in confidence with people who know and understand grief.

Sue Barnes

Hospice Support Group

The Hospice Support has been raising funds for The Mary Ann Evans Hospice for over 35 years; we hold a Coffee Morning bi – monthly on the third Saturday of the Month beginning in January.

During 2025 we held six Coffee Mornings which were well supported by the local community, raising £1,533. Many Hospices are struggling for funds and Mary Ann Evans is no exception so our contribution is greatly appreciated.

Everyone is welcome at these events; we make a small charge for entry (no charge for children) /drinks and cakes are served at you table and there is a sales table and a raffle. Due to the generosity of our supporters and the church we have no overheads, so all monies taken are given to the Hospice.

Thanks must go to all our supporters, especially those who volunteer on the day and everyone who makes cakes and donates raffle prizes. We couldn't do it without you. If you would like to be part of the team, please do not hesitate to contact Jackie or Viv.

Jackie West and Vivien Hopkins

Pastoral Care Team

The aim of the Pastoral Care Team is to maintain contact with and support members of the church and community in as many ways as possible. During 2024 we did this in a number of ways including personal visits and telephone calls. Holy Communion is given to members in their own homes and in care homes.

All requests and visits are treated with confidentiality and all members of the team have received the required safeguarding training.

If you know of anyone who would appreciate a visit, or if you felt you would like to join us in this ministry, please contact me via the parish office.

Vivien Hopkins

6. Growing Faith Ministry

Children and Families Ministry

Our 11.45 am Sunday Celebration remains our main point of consistent contact with children and families and continues to see growth across a range of ages. We have again seen children encouraging their parents to come along and growing in confidence and enthusiasm to help lead aspects of the service.

After securing funding from the Nicholas Chamberlaine Support Trust through a joint Growing Faith Project with Bedworth and Bulkington parishes, we were able to advertise for a Growing Faith Family Link Worker (GFFLW) this year. It was a real delight and answer to prayer to be able to appoint Katie Baker to take up the role from January 2026. One of the main aims of this post is to develop stronger faith links between home, school and church. Katie's appointment significantly increases our capacity to extend our outreach to children and families. Please do pray for her as she continues to take this work forward.

Schools Ministry

The school community across our parish is vast with four primary schools, Ash Green Secondary School, as well as Exhall Grange and Warwickshire Academy, both of which offer specialist provision for children with a range of additional needs. A particular highlight in 2025 was the opportunity to visit Warwickshire Academy for the first time and introduce Christingles to several different classes, with the students joining in to make their own.

I continue to visit our primary schools on a regular basis to lead assemblies, often based around school values such as kindness, honesty and resilience. We also offer seasonal assemblies around Harvest and Easter. Our primary schools continue to enjoy visits to the church, particularly at Christmas.

Youth Ministry

Engagement with youth has been a key area of priority for us at St Giles and we are grateful for the support of Bedworth Parish as our Mission Hub Church in enabling us to continue a weekly hot chocolate give-away and Youth Impact youth club which run from our Main Hall. Although we no longer have a designated youth worker for St Giles, a team of three youth workers from Bedworth Parish run the Thursday Youth Impact for us.

The hot chocolate give-away is a vital first point of contact with young people as they make their way home from school. As they get to know the youth workers better, they are encouraged to join the Youth Impact club which runs from 4–6pm and has seen significant growth this year, with 60 registered and an average weekly attendance of 15. In addition to providing a variety of fun activities for young people, the Youth Impact sessions include workshops with a focus on arts, healthy cooking, sports and team building.

The youth team also go into Ash Green School three times a week to offer one-to-one mentoring support as well as small group sessions for students at risk of exclusion. The team run mental well-being programmes which include interventions such as art and gardening workshops. They also provide support for students who are in 'reflection' (detention), assisting with their school and homework. A recent project has been to involve students in designing and painting the school shed, fostering a sense of ownership of the garden area at their school.

Rev Gail Phillip

Residential Care Homes

This year has seen particular growth in our outreach at local care homes. A highlight has been renewed links with Haven and Evergreen (formerly Platinum) Care Homes with the opportunity to lead seasonal services, as well as to offer pastoral support to individual residents by request.

We continue to run monthly services at Bede Village, including a Communion service and a further service for residents in the nursing care section of the home. Chris Wilson also leads a monthly afternoon service at Bede on the last Sunday of each month. Attendance at these services ranges from 4 – 12 residents with numbers increasing significantly towards the end of the year.

Monthly services at Fairfield are on the second Thursday of each month with a regular attendance of 12 – 15. Recently, some longstanding members of the St Giles' church family who had not been able to attend worship at church for a long time, have now moved into Fairfield and are able to attend regular services there. To be reunited in worship has been a real joy for them and for us.

Andy Clark now regularly takes the lead in services at Bede and Fairfield. This volunteer lay support is vital to the flourishing of this ministry. It is wonderful to see how faces light up as we sing familiar hymns, and as what we share inspires all sorts of recollections from residents who share themselves in leading our times of worship together.

Rev Gail Phillip

Chatty Crafters

The *Chatty Crafters* group continues to grow and attract members from the wider community. Our current membership stands at 34 and we continue to enjoy a wide range of different craft activities. Many of our members are now confident enough to share new ideas and lead sessions with the group, enabling new skills to be gained.

We continue to support George Eliot Special Care Baby Unit and this year we have also knitted trauma teddies for children and young people undergoing treatment at The Royal Marsden Hospital. We made beautiful tweedle muffs – a knitted cuff decorated with ribbons and buttons that are used to stimulate those suffering from dementia and Alzheimer's.

Our Easter gifts for residents of Fairfield Care Home were well received as were knitted hearts we put in bags and placed them around the local area. We produced another

Easter Garden and decorated the church for Remembrance Sunday and supported the annual Christmas Tree Festival.

We held two fundraising coffee mornings to mark the 80th anniversaries of VE Day and VJ Day, which attracted many local residents. The VE Day event raised over £1000 for Combat Stress and the more low key VJ Day event over £500 for the Alzheimer's Society.

Once again the group produced an array of handcrafted items to sell at the Christmas Bazaar. We celebrated another member's 90th birthday this year, enjoyed a fun filled Christmas Party and have had evening visits to the Civic Hall.

The group provides a constant source of fun, kindness, generosity, friendship, support and compassion to those who attend and the genuine concern for one another is readily apparent. We ask for your prayers and for God's blessing on all that the *Chatty Crafters* do to reach out to the community as we strive to provide an inclusive and welcoming place for all. We give thanks for the time, effort and enthusiasm that is freely given by so many.

Karen White & Debbie Green

Organising Group: Karen White, Debbie Green, Marie Crilly, Anita Bentick, Carole Herriot

Community Partnership Group

There were a number of community highlights in 2025:

Party in the Park on 14th June. The event was resurrected after a few years' break and we were very pleased with its success. As well as games and refreshments, various organisations joined to showcase their activity, including Leivers Dance, Bedworth Seed Swap and Perspex Rainbow. We plan to repeat the event in 2026 on July 4th, hopefully with more contributors.

Harvest Supper and Barn Dance September 27th. A great night, everyone had fun trying to get the dances right, not always successfully despite the caller's best efforts. The simple ploughman's supper went down well and the music provided by *The Cat's Whiskers* was just right – we have already booked them for 2026!

Christmas Tree Festival December 14th till Epiphany. Another successful event, with a good number of trees displayed although not as many as in previous years.

The Community Partnership Group has been set up again – please pray for new members to become involved and if you would like to join contact Tina Watkins.

Tina Watkins

Drama Club

Our pantomime for 2025 was *The King's New Clothes*. The show was great fun to perform and we had some really encouraging feedback. We had 28 people on stage, ranging in age from 8 to 83 years old. We were able to give the church more than £2,000. This was partly due to a grant obtained from the County Councillor's fund towards the cost of hiring our dressing room for the young people – which costs us around £1,400 each year. Our County Councillor, Pete Gilbert, also made a generous personal donation.

We must thank all of those from the St Giles family who supported us by coming to see the show, and also those who helped serve refreshments and chaperone the children in the dressing room.

Our “panto family” enjoys getting together on the Sunday evening after the run to enjoy a meal together and generally let off steam! We also get together around April to watch the DVD recorded during the week, an occasion of great hilarity and good-natured banter.

As those of us who put together the show each year grow older, please pray that enthusiastic younger people come forward to enable this tradition to continue into the future!

Tina Watkins

Exhall Over 50s' Club

As chairperson of the Over 50s Club I am delighted to report that our club continues to be well supported. We provide an important opportunity within the local community for people to meet on a regular basis to cement existing friendships and to develop new ones.

We endeavour to provide a varied program of activities in order to meet a wide range of interests. We have bingo, hoy, speakers and entertainers all enjoyed with copious cups of tea and/or coffee.

We are currently planning days trips and monthly pub lunch visits.

If you are over 50 and have a couple of hours free each Tuesday come and give us a try. You will be made welcome. If our club may be of interest please contact Tricia Munro via the church office for further information.

Tricia Munro

Mothers' Union

We have around 18 full members and approximately 8-10 friends of MU. We meet on the 3rd Thursday evening of the month and have a full programme of events with visiting speakers and social events supported by all members, visitors and friends.

Our 2025 speakers were: John Elton (Mercy Ships), Captain Gordon Banks (Farming Community Network and Christmas Revisited), Nigel Sullivan (Good News for Everyone). We enjoyed our Craft night run by our members Marie and Karen. Our New Year Social was planned for an afternoon session where we enjoyed a quiz, buffet and conversation together.

In the Summer we had a Beetle Drive and supper which was enjoyed by all and a meal at the Bull & Butcher with members and Friends of MU. We joined with our Deanery MU Friends for prayers early September and MU Diocesan Advent Service early December which were both held at Exhall. 16 Days of Activism & Human Rights Day was highlighted in November and December with a pair of boots on the bench outside the church door.

At the Christmas Bazaar we had a table with filled jars and bags and provided and decorated a tree for the St Giles Christmas Tree festival. We continue to support Baptism Bibles and Doorway Charity.

Looking ahead to the summer of 2026, MU will be celebrating 150 Years since Mary Sumner founded Mothers' Union with a bold vision: women united in faith to support families and the church. From that small beginning in Old Alresford, the movement has grown to over four million members worldwide. Join us in giving thanks for the past and seeking God's guidance for the journey ahead. Join Us, Join In!

Yvonne Knowles

Parish Magazine

The magazine was first published in 1898 and is now in its 129th year. We continue to print and distribute just over 200 copies. Some are posted to those unable to attend services and a good number are delivered by our faithful band of deliverers – many thanks to you all. A couple of people have felt they can no longer deliver so thank you to those who have stepped up to take over their rounds. The remainder are collected in church. The cost remains at 50p per copy as at the end of 2025 – a bargain and an excellent means of outreach! The price will increase to £1 from the first edition in 2026. Some readers voluntarily pay a little more and contribute to postage, which is most welcome.

We have gained some new advertisers which is good news – it all helps to enable us to break even on production. Please pray that the magazine continues to be enjoyed by our community.

As ever, articles from our regular contributors are very much appreciated and continue to be provided with great reliability. One-off items are most welcome too!

Tina Watkins Editor

Parish Communications

Great news! In November PCC agreed to fund a more up-to-date website which will be created and maintained by an external company linked to the administrative platform and tool we already make good use of, *iknowchurch*. The old website worked but wasn't as widely used as it could be. We lacked the skills and abilities to create a new one in-house and technology changes with the speed of light so the new investment will be well worth it.

Our weekly e-newsletter and website continue to form the backbone of our communications although we are using Facebook more regularly to publicise events, particularly things like All Hallows and movie mornings. We are very aware that limitations of time and skill around other social media platforms means they are not used to their full potential.

More good news! Our newly-appointed Growing Faith Family Link Worker Katie Baker **does** have the knowledge and skills needed so we will be supporting her as she develops this side of our communication plans. These platforms are a much more successful way to reach young people and families.

For church family who don't have email or access to the internet, information is regularly posted out, including our Parish Magazine as well as the *Live your Faith* prayer, praise and worship sheets. Regular feedback reassures us that these are very much appreciated.

Penny Pallett - Parish Administrator

7. Ecumenical and Community Relationships

Ash Green Residents' Association

This group has now been dissolved but some of our church members continue to have involvement with Exhall Residents Association, advocating around local issues.

Bedworth Churches Together (BCT)

In 2025, our local churches came together around the Week of Prayer for Christian Unity with daily prayer opportunities in different churches and a joint service at Bedworth Methodist Church. We led our annual service on Good Friday in Bedworth town centre which was well received and opened opportunities for conversations about Christian faith with those attending and passing by.

We said farewell to Mark Turner from Bedworth Baptist Church who had ministered there for many years and also chaired Bedworth Churches Together, wishing him well in his retirement.

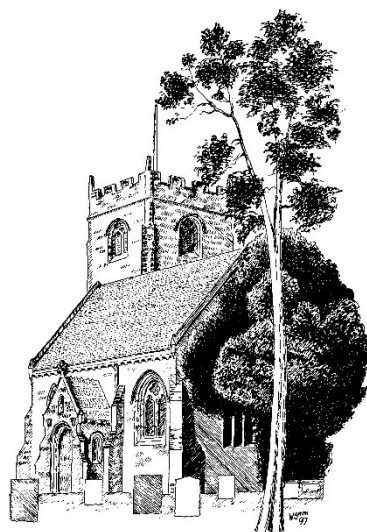
United Church (formerly known as Life Church) celebrated their 50th Anniversary this year and in 2026 The Old Meeting Hall United Reformed Church will celebrate their 300th Anniversary. Please pray for all our local churches as we continue to support one another in outreach across Bedworth.

Rev Gail Phillip

Financial Report (separate document)

Parochial Church Council of St. Giles' Church Exhall

Annual Financial Report for the year ending 31 December 2025



Incumbent

The Reverend Gail Phillip

Treasurer

The Reverend Stephen Carter

Bankers

Santander UK plc
CCLA Investment Management Ltd.
Churches' Mutual Credit Union

Independent Examiner

Gavin Kibble

Page	Contents
2	Introduction
3	Financial Report & Policies
4	Independent Examiner's Report
5	Statement of Financial Activities
5 – 6	Statement of Assets and Liabilities
7	Fund Movement
8 – 9	Analysis of Income and Expenditure
10	Conclusion

Introduction

Basis of preparing the financial statements

The accounts (financial statements) have been prepared under the historical cost convention with items recognised at cost or transaction value unless otherwise stated in the relevant note(s) to these accounts. The financial statements have been prepared in accordance with the Statement of Recommended Practice: Accounting and Reporting by Charities preparing their accounts in accordance with the Financial Reporting Standard applicable in the UK and Republic of Ireland (FRS 102) issued on 16 July 2014 and the Financial Reporting Standard applicable in the United Kingdom and Republic of Ireland (FRS 102) and the Charities Act 2011.

Incoming resources and resources expended

All incoming resources are included in the Statement of Financial Activities when the church is legally entitled to the income, and the amount can be quantified with reasonable accuracy. Expenditure is accounted for on an receipts and payments basis and has been classified under headings that aggregate all costs related to that category. Where costs cannot be directly attributed to particular headings they have been allocated to activities on a basis consistent with the use of resources.

Fund accounting

Unrestricted funds can be used in accordance with the church's objectives at the discretion of the PCC. Designated funds comprise funds that have been set aside at the discretion of the PCC for specific purposes and recorded as such in the minutes of the PCC. Restricted funds can only be used for the particular purposes specified by the donor or when funds are raised for particular restricted purposes.

The restricted fund for the Church Houses is supported by income derived from the legacy of Frances Riley. This can be used for the upkeep of the Churchyard (including the Meadow) and for maintenance of the church building.

The Church Maintenance restricted fund is largely supported by income derived from the legacy of Susan Bourne. It can be used for the maintenance of the church building and the enhancement of the audio-visual equipment.

Other, smaller, restricted funds derive their funds from direct grants, donations and investment income. They can be used for the specific purposes suggested by their titles.

Investments

Investments are stated at market value. The house in Coventry Road is currently used as an investment asset and generates income for the church. A valuation instructed by the PCC in 2024 indicated that its open market value at that time was £255,000, an increase of £70,000 from its previous value.

Staff Costs

The average monthly headcount was 1.00 staff (2024: 1.00 staff) and the average monthly full-time equivalent headcount (including part-time staff) was 1 (2024: 1). No staff were paid at a higher rate than £60,000 per annum during this or the previous year. The church subscribes to a workplace pension scheme although there are currently no members of it. No members of the Parochial Church Council (trustees) were remunerated for services to the charity (2024: nil)

Related Party Transactions

There were no related party transactions during the year (2024: nil).

PCC Membership (Trustees)

The following were members of the PCC during 2025

Gail Phillip (Incumbent)
Neva Khan (Churchwarden) (until 20 January 2025)
Neil Harris (Churchwarden) (until 11 May 2025)
Eddie Lanteri (until 11 May 2025)
Viv Hopkins (Deanery Synod) (until 11 May 2025)
Sam Jones (until 11 May 2025)
Helen Anderson (until 11 May 2025)
Jayne Pagett (Churchwarden) (from 11 May 2025)
Andy Clark (Deanery Synod) (from 11 May 2025)
Kathryn Unsworth (from 11 May 2025)
Steve Watkins (from 11 May 2025)
Tina Watkins (from 11 May 2025)

Katherine Parker (from 11 May 2025)
Nikki Smith (Churchwarden)
Gwyneth Carter (Deanery Synod)
John Owen (Readers' Representative)
Mandy Williams
Susan Barnes
Emma Flint
Anna Standing
Carol Gough
Brian Inott
Paul Lanchbury

Financial Report

We have to report that the overall financial situation of the church has shown some slight improvement during the year. Although there was a decrease in regular giving of about £3,404 year on year and, overall, our unrestricted income was down by £4,013 year on year, we were still able to pay the amount of Parish Share to which we had committed plus an extra £10,000. Our unrestricted expenditure also decreased considerably by £16,571 year on year, and we were left with an excess of £2,332 for the year. Taking into account the returns on our investment accounts and other restricted income and expenditure, we find ourselves about £6,569 better off than we were at the same time last year.

The Large Church Hall is a charity in its own right and its finances have to be reported to the Charity Commission separately. The details of the figures, however, are part of the main church accounts. Income received from lettings and donations in the year totalled £10,866 (2024: £11,847), while total expenditure to run and maintain the hall and car park came in at £12,548 (2024: £10,806), giving a deficit of £1,682 (2024: profit of £1,041).

Accounting Policies

Reserves Policy

The PCC's policy is to review the reserves of the church on a regular basis. This review encompasses the nature of income and expenditure streams, and the PCC determined that, this year, a general fund reserve of two month's unrestricted expenditure plus an extra month's cover for the Parish Administrator's salary should be maintained. At the end of the year the target for 2026 was £15,333 (2025: £18,155).

Risk Policy

The PCC has identified the risks that might affect the church and has provided relevant training as advised. The PCC reviews the church's policies and procedures regularly to minimise any risks identified.

Independent Examiner's report to the PCC of St. Giles' Church, Exhall for the year ended 31st December 2025.

This report on the accounts of the PCC for the year ended 31st December 2025, is in respect of an examination carried out in accordance with the Church Accounting Regulations 2006 ('the Regulations') and s.145 of the Charities Act 2011 ('the Act').

Respective responsibilities of the PCC and the examiner

As members of the PCC you are responsible for the preparation of the accounts; you consider that the audit requirement of the Regulations and section 144(2) of the Act do not apply. It is my responsibility to issue this report on those accounts in accordance with the terms of the Act and the Regulations.

Basis of this report

My examination was carried out in accordance with the General Directions given by the Charity Commission under the Act and to be found in the Church Guidance, 2006 edition, issued by the Finance Division of the Archbishop's Council. That examination includes a review of the accounting records kept by the PCC and a comparison of the accounts with those records. It also includes considering any unusual items or disclosures in the accounts and seeking explanations from you as trustees concerning any such matters. The procedures undertaken do not provide all the evidence that would be required in an audit, and consequently I do not express an audit opinion on the view given by the accounts.

Independent examiner's statement

In connection with my examination, no matter has come to my attention:

- (1) which gives me reasonable cause to believe that in any material respect the requirements –
 - to keep accounting records in accordance with section 130 of the Act; and
 - to prepare financial statements which accord with the accounting records and comply with the requirements of the Act and the Regulations have not been met; or
- (2) to which, in my opinion, attention should be drawn in order to enable a proper understanding of the accounts to be reached.



Gavin Kibble ACMA
McGlone Wardynski Limited
The Halo Centre
Progress Way
Binley Industrial Estate
Coventry CV3 2NT

Date 29th March 2026

Statement of Financial Activities

	Unrestricted funds	Designated funds	Restricted funds	Endowment funds	Total funds	Prior year total funds
Income and endowments from:						
Donations and legacies	60,359	3,000	8,265	—	71,625	83,766
Income from charitable activities	11,098	8,011	732	—	19,842	23,713
Other trading activities	5,704	952	9,000	—	15,656	15,086
Investments	296	—	11,788	—	12,085	14,538
Other income	—	—	—	—	—	—
Total income	77,459	11,963	29,786	—	119,209	137,105
Expenditure on:						
Raising funds	471	—	1,080	—	1,551	1,390
Expenditure on charitable activities	71,554	15,064	13,282	—	99,901	201,288
Total expenditure	72,026	15,064	14,362	—	101,453	202,679
Gains / losses on investment assets	(94)	—	(11,092)	—	(11,187)	76,588
Net income / (expenditure) resources before transfer	5,338	(3,100)	4,331	—	6,568	11,014
Transfers						
Gross transfers between funds - in	—	3,773	16,861	—	20,635	76,574
Gross transfers between funds - out	(3,237)	(537)	(16,859)	—	(20,635)	(76,574)
Other recognised gains / losses						
Gains on revaluation, fixed assets, charity's own use	—	—	—	—	—	—
Net movement in funds	2,100	135	4,333	—	6,568	11,014
Total funds brought forward	24,330	—	1,148,374	—	1,172,704	1,161,690
Total funds carried forward	26,430	135	1,152,708	—	1,179,273	1,172,704

Statement of assets and liabilities

	This year	Last year
Investments		
CCLA Riley Trust Legacy A/c - CB30005876		
Church Houses (Restricted) -	242,965	253,083
	242,965	253,083
CCLA Bourne Legacy A/c - CB3024012		
Church Maintenance (Restricted) -	70,667	71,612
	70,667	71,612
CCLA General Investment A/c - CB3024011		
General fund (Unrestricted) -	8,002	8,096
	8,002	8,096
Total for Investments	321,634	332,792
Tangible assets		
Large Hall		
Property Values (Restricted) -	396,348	396,348
	396,348	396,348
Small Hall		
Property Values (Restricted) -	109,736	109,736
	109,736	109,736
House - Coventry Road		
Property Values (Restricted) -	255,000	255,000
	255,000	255,000
Total for Tangible assets	761,084	761,084

Statement of assets and liabilities (continued)

	This year	Last year
Cash at bank and in hand		
Santander Current Account		
General fund (Unrestricted) -	15,882	13,923
Church Maintenance (Restricted) -	—	14,188
Church Hall - Large (Designated) -	135	—
Churchyard (Restricted) -	118	148
Church Houses (Restricted) -	6,349	3,981
Remembrance Parade Road Closures (Restricted) -	853	853
Agency collection (Restricted) -	—	500
St Giles' Toddlers' Group (Restricted) -	56	56
Youth Café (Restricted) -	1,028	1,028
Super Sunday School (Restricted) -	—	(275)
	24,422	34,405
CCLA No 2 A/c - CB3024013		
General fund (Unrestricted) -	2,434	2,137
	2,434	2,137
CCLA Restoration A/c - CB3024014		
Church Maintenance (Restricted) -	24,503	21,468
	24,503	21,468
CCLA Riley Trust Income A/c - CB3024015		
Church Houses (Restricted) -	44,801	21,048
	44,801	21,048
Administrator's Cash A/c		
General fund (Unrestricted) -	27	27
	27	27
Movie & Events' Cash A/c		
General fund (Unrestricted) -	51	77
	51	77
Coffee, Craft & Conversation Cash A/c		
Craft Group (Restricted) -	281	97
	281	97
Churchwardens' Cash A/c		
General fund (Unrestricted) -	32	67
	32	67
Total for Cash at bank and in hand	96,554	79,329
Agency accounts		
Agency collections		
Agency collection (Restricted) -	—	(500)
Total for Agency accounts	—	(500)
Grand total	1,179,273	1,172,704

Fund movement by type

	Opening	Incoming	Outgoing	Transfers	Gains/losses	Journals	Closing
General - General fund							
Unrestricted	24,330	77,459	72,026	(3,237)	(94)	—	26,430
Sub-total for General	24,330	77,459	72,026	(3,237)	(94)	—	26,430
CHUMAJNT - Church Maintenance							
Designated	—	—	—	—	—	—	—
Restricted	107,270	3,342	1,845	(12,651)	(945)	—	95,171
Sub-total for CHUMAJNT	107,270	3,342	1,845	(12,651)	(945)	—	95,171
HALL-LARG - Church Hall - Large							
Designated	—	10,866	12,548	1,817	—	—	135
Restricted	—	650	650	—	—	—	—
Sub-total for HALL-LARG	—	11,516	13,198	1,817	—	—	135
HALL-SMAL - Church Hall - Small							
Designated	—	1,095	2,515	1,420	—	—	—
Restricted	—	—	—	—	—	—	—
Sub-total for HALL-SMAL	—	1,095	2,515	1,420	—	—	—
CHUYARD - Churchyard							
Designated	—	—	—	—	—	—	—
Restricted	148	5,865	5,894	—	—	—	118
Sub-total for CHUYARD	148	5,865	5,894	—	—	—	118
CHUMEADOW - Church Meadow							
Designated	—	2	—	(2)	—	—	—
Restricted	—	96	1,231	1,135	—	—	—
Sub-total for CHUMEADOW	—	98	1,231	1,133	—	—	—
CHUHOUSES - Church Houses							
Designated	—	—	—	—	—	—	—
Restricted	278,113	17,753	3,150	11,518	(10,117)	—	294,115
Sub-total for CHUHOUSES	278,113	17,753	3,150	11,518	(10,117)	—	294,115
GFFLW - Growing Faith Family							
Restricted	—	—	—	—	—	—	—
Sub-total for GFFLW	—	—	—	—	—	—	—
CCC - Craft Group							
Designated	—	—	—	—	—	—	—
Restricted	97	732	518	—	—	(29)	281
Sub-total for CCC	97	732	518	—	—	(29)	281
ROADCLOSE - Remembrance Parade							
Restricted	853	—	—	—	—	—	853
Sub-total for ROADCLOSE	853	—	—	—	—	—	853
TANGASS - Property Values							
Restricted	761,084	—	—	—	—	—	761,084
Sub-total for TANGASS	761,084	—	—	—	—	—	761,084
TODDGRP - St Giles' Toddlers'							
Restricted	56	—	—	—	—	—	56
Sub-total for TODDGRP	56	—	—	—	—	—	56
YOUCAFÉ - Youth Café							
Designated	—	—	—	—	—	—	—
Restricted	1,028	—	—	—	—	—	1,028
Sub-total for YOUCAFÉ	1,028	—	—	—	—	—	1,028
SHARE - Parish Share Reserve							
Designated	—	—	—	—	—	—	—
Sub-total for SHARE	—	—	—	—	—	—	—
SSS - Super Sunday School							
Restricted	(275)	1,347	1,071	—	—	—	—
Sub-total for SSS	(275)	1,347	1,071	—	—	—	—
Grand total	1,172,704	119,209	101,453	—	(11,157)	(29)	1,179,273

Analysis of income and expenditure

					Total	
	Unrestricted	Designated	Restricted	Endowment	This year	Last year
INCOME AND ENDOWMENTS						
Donations and legacies						
Bank SOs (Gift Aided)	24,958	—	—	—	24,958	28,124
Envelopes (Gift Aided)	8,057	—	—	—	8,057	9,285
CAF Donate	100	—	96	—	196	179
SumUp	1,445	—	—	—	1,445	1,320
Bank SOs (Non-Gift Aided)	6,254	—	—	—	6,254	5,419
Envelopes (Non-Gift Aided)	1,284	—	—	—	1,284	1,270
Loose plate collections	3,363	—	—	—	3,363	2,547
One-off gifts (Gift Aided)	742	—	—	—	742	321
One-off gifts (Non-Gift Aided)	956	2,000	—	—	2,956	1,135
Other donations, appeals etc	675	1,000	—	—	1,675	2,777
Wall Safe	529	—	—	—	529	—
Candles	36	—	—	—	36	17
Tax recoverable on Gift Aid & GASD	10,958	—	—	—	10,958	10,772
Legacies	1,000	—	—	—	1,000	1,000
Recurring grants	—	—	6,800	—	6,800	5,651
Non-recurring one-off grants	—	—	1,369	—	1,369	13,944
Total	60,359	3,000	8,265	—	71,625	83,766
Income from charitable activities						
Fees for Occasional Services	10,166	—	—	—	10,166	10,121
Large hall lettings	—	7,866	—	—	7,866	11,847
Small hall lettings	—	145	—	—	145	523
Magazine income - sales	932	—	—	—	932	1,221
Craft Group Income	—	—	732	—	732	—
Total	11,098	8,011	732	—	19,842	23,713
Other trading activities						
Fund-raising sales and events	4,040	—	—	—	4,040	3,685
Other funds generated	—	—	—	—	—	110
Rent from Coventry Road House	—	—	9,000	—	9,000	9,000
Bookstall sales	32	—	—	—	32	—
Photocopying	422	—	—	—	422	479
Small Hall - PV Cell income	—	950	—	—	950	849
National Grid Wayleave	—	2	—	—	2	2
Magazine income - advertising	1,210	—	—	—	1,210	960
Total	5,704	952	9,000	—	15,656	15,086
Investments						
Investment account dividends	—	—	—	—	—	8,866
Income transferred from investments	—	—	9,077	—	9,077	—
Deposit account interest	296	—	2,710	—	3,007	5,671
Total	296	—	11,788	—	12,085	14,538
INCOME TOTAL	77,459	11,963	29,786	—	119,209	137,105

EXPENDITURE

Raising funds

Costs of stewardship campaign	103	—	—	—	103	89
Costs of fetes & other events	367	—	—	—	367	40
House management costs - Coventry Road	—	—	1,080	—	1,080	1,260
Total	471	—	1,080	—	1,551	1,390

Expenditure on charitable activities

Giving - Missionary Societies	1,040	—	—	—	1,040	675
Giving - Relief & Development	974	—	—	—	974	680
Giving - Home mission	895	—	—	—	895	731
Giving - Secular Charities	955	—	—	—	955	680
Ministry parish share etc	35,000	—	—	—	35,000	55,000
Salary of parish administrator	9,811	—	—	—	9,811	9,673
Organists	2,305	—	—	—	2,305	2,500
Working expenses of Incumbent	692	—	—	—	692	359
Working expenses of Curate	—	—	—	—	—	455
Vicar's telephone & broadband	531	—	—	—	531	370
Parish training	177	—	—	—	177	816
Mission Resources	218	—	848	—	1,066	298
Website	—	—	—	—	—	377
Social Outreach Events	19	—	65	—	85	458
Church running - insurance	3,706	—	—	—	3,706	3,659
Church office - Telephone / Internet	672	—	—	—	672	625
Church maintenance	1,072	—	—	—	1,072	992
Cleaning	807	—	—	—	807	758
Sundry church expenses	916	385	894	—	2,196	620
Upkeep of services	1,799	—	157	—	1,957	1,463
Choir Expenses	137	—	—	—	137	329
Upkeep of Churchyard	24	—	5,689	—	5,713	5,460
Upkeep of Meadow	—	—	1,191	—	1,191	1,418
Waste Disposal	78	1,145	—	—	1,223	680
Administration	1,288	—	—	—	1,288	681
Office Stationery	1,408	—	—	—	1,408	1,113
Photocopier Costs	2,190	—	—	—	2,190	2,122
Visiting speakers / locums	61	—	—	—	61	—
Refreshments	424	—	—	—	424	863
Craft Group Expenses	—	—	518	—	518	605
Church running - electric	876	—	—	—	876	938
Church running - gas	2,684	—	—	—	2,684	2,574
Church Broadband Connection	478	—	—	—	478	470
Magazine expenses	52	—	—	—	52	51
Large Hall running - electricity	—	4,028	—	—	4,028	4,105
Large Hall running - licensing	—	127	—	—	127	89
Large Hall running - insurance	—	1,314	—	—	1,314	1,268
Large Hall running - maintenance	—	1,298	—	—	1,298	178
Large Hall running - cleaning	—	2,015	—	—	2,015	2,470
Small Hall running - electricity	—	1,037	—	—	1,037	1,248
Small Hall running - insurance	—	452	—	—	452	441
Small Hall running - maintenance	—	47	—	—	47	159
Small Hall running - cleaning	—	907	—	—	907	1,062
House insurance costs - Coventry Rd	—	—	226	—	226	225
House minor repair costs - Coventry Road	—	—	710	—	710	1,503
House running costs - Coventry Road	—	—	210	—	210	—
Governance costs examination/audit fee	250	—	—	—	250	250
Church major repairs - structure	—	—	1,845	—	1,845	82,267
Church Technology Equipment	—	—	—	—	—	1,625
Large Hall - major repairs (structure)	—	2,304	—	—	2,304	—
Large Hall - major repairs (installation)	—	—	—	—	—	5,887
House major repairs etc. - Coventry Road	—	—	924	—	924	—

Total	71,554	15,064	13,282	—	99,901	201,288
EXPENDITURE TOTAL	72,026	15,064	14,362	—	101,453	202,679
GRAND TOTAL	5,432	(3,100)	15,424	—	17,755	(65,574)

Conclusion

Sue Talbot and her friend Valerie Wells have regularly counted and banked our incoming monies and, once again, we are extremely grateful for their care and diligence in helping us in this way.

Although better than last year, our financial position is still not as strong as we would like, and we need to continue to increase our regular giving to ensure longer-term sustainability and growth. The Finance and Stewardship Committee has tried, over the last few years, to raise awareness of, and address, the financial challenges that face us. We are deeply grateful for their diligence in this work, which will continue to be a key area for discussion, prayer and development, with an emphasis on every member of the church family having a vital part to play.

This report dated: 23 February 2026



Stephen Carter
PCC Treasurer



Gail Phillip
Incumbent & PCC Chair

Independent Examiner's report to the PCC of St. Giles' Church, Exhall for the year ended 31st December 2025.

This report on the accounts of the PCC for the year ended 31st December 2025, is in respect of an examination carried out in accordance with the Church Accounting Regulations 2006 ('the Regulations') and s.145 of the Charities Act 2011 ('the Act').

Respective responsibilities of the PCC and the examiner

As members of the PCC you are responsible for the preparation of the accounts; you consider that the audit requirement of the Regulations and section 144(2) of the Act do not apply. It is my responsibility to issue this report on those accounts in accordance with the terms of the Act and the Regulations.

Basis of this report

My examination was carried out in accordance with the General Directions given by the Charity Commission under the Act and to be found in the Church Guidance, 2006 edition, issued by the Finance Division of the Archbishop's Council. That examination includes a review of the accounting records kept by the PCC and a comparison of the accounts with those records. It also includes considering any unusual items or disclosures in the accounts and seeking explanations from you as trustees concerning any such matters. The procedures undertaken do not provide all the evidence that would be required in an audit, and consequently I do not express an audit opinion on the view given by the accounts.

Independent examiner's statement

In connection with my examination, no matter has come to my attention:

- (1) which gives me reasonable cause to believe that in any material respect the requirements –
 - to keep accounting records in accordance with section 130 of the Act; and
 - to prepare financial statements which accord with the accounting records and comply with the requirements of the Act and the Regulations have not been met;or
- (2) to which, in my opinion, attention should be drawn in order to enable a proper understanding of the accounts to be reached.



Gavin Kibble ACMA
McGlone Wardynski Limited
The Halo Centre
Progress Way
Binley Industrial Estate
Coventry CV3 2NT

Date 29th March 2026