



# ANNUAL REPORT

2023

[www.eastendchurch.co.uk](http://www.eastendchurch.co.uk)



EAST END CHURCH

EAST END CHURCH

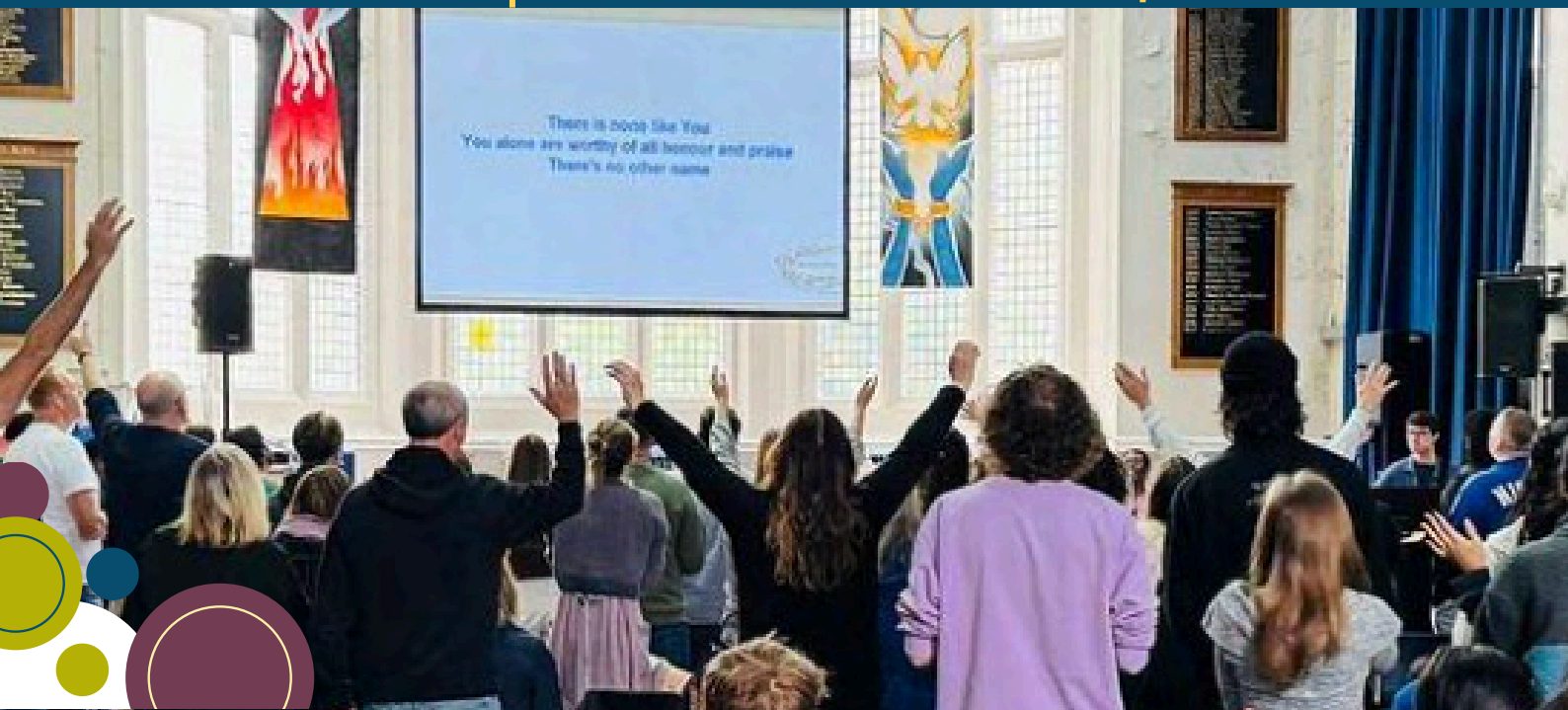
SUBSCRIBE



email:

[INFO@EASTENDCHURCH.CO.UK](mailto:INFO@EASTENDCHURCH.CO.UK)

Join the group



# Table of Contents

1. Table of Content
2. Letter from the Chair of the Trustees
3. Reference and Administrative  
Details [Church Information]
4. Preaches
5. EEC FACTS
6. Box-Up Crime
7. East End Youth
8. Attendance
9. EEC Community
10. Just Giving
11. Street Prayer
12. Street Prayer [contd]
13. East End Nans
14. Young Adults
15. GrowTH
16. EEC Women
17. Asylum Seeker Outreach
18. EEC Men
19. East End Kids [EEK]
20. RenewEL
21. East End Academy
22. Report of the Trustees & Financial Statement



info@eastendchurch.co.uk

# Trustee message

## Rosalind Owen

### *Chair of Trustees*

As incoming chair of the board of Trustees, it is a privilege to reflect on another fantastic year for East End Church (EEC) and how EEC has been blessed to serve our community and Jesus in 2023. Before continuing any further, I must pay tribute to our outgoing chair, Steve Coster. He is a true church builder who has led the board faithfully and with incredible dedication, wisdom and servant-heartedness for 10 years.

Steve took a very long overdue sabbatical from his roles as elder and board chair in summer 2024, and now continues in leadership as an elder and a Trustee. Steve, a very big thank you on behalf of all in EEC for the excellence and dedication that you have brought to the role of chair!



A highlight of the year has been to see the EEC community growing in new ways. We have welcomed people from all over the world, reflecting the rich diversity of East London. This has brought us so much – a greater understanding of the persecuted church around the world, new expressions of worship, a different perspective in our prayer life, becoming more multi-lingual and sharing many delicious meals together! Another exciting area of increased diversity is the growing group of young adults regularly attending EEC and bringing fresh life and energy. A new core leadership team has been established, to raise up new leaders within the church and support the existing elders. This growth builds faith for God's church to continue to impact lives across the East end of London and beyond.

As you read through this report you will see many examples of EEC reaching into the communities where we live and work: serving the vulnerable, marginalised, those at risk of crime, and helping people connect with the hope that comes from knowing Jesus. Most of these activities are run by volunteers, expertly coordinated by our staff team. On behalf of the board, I here extend a very big thank you to the East End church staff team – Tom Head, Heather Bennett and Jenny Foster, and to every person who has rolled up their sleeves and got stuck in as a volunteer.



I am amazed every Sunday seeing such a diverse community of people worshipping together with such joy. Excellent Bible teaching from Jonah, Corinthians and Luke challenged and inspired us to humble service, faithfully using all the gifts that God gives us. Thank you to all those who preach and lead worship.

As a board of Trustees, we are blessed to serve such an active, Jesus-centred church.

Thank you to Shaun MacLachlan and Steve Coster for your ongoing service as Trustees, and welcome to Soo Eun Sexton – thank you for taking on this responsibility.

Thank you also to Emily for all your support with the finances. We look forward with hope, joy and faith to 2025.



# Church Information

## Status:

Registered Company number  
07464130  
(England and Wales)  
Registered Charity number  
1146201

## Elders:

Evans Bissessar  
Stephen Coster  
Tom Head

## Bankers:

HSBC Bank Plc,  
59-61 The Mall Stratford  
Centre  
Stratford,  
London, E15 1 XF

## Trustees:

Stephen Coster  
Shaun Maclachlan  
Rosalind Owen  
Soo Eun Sexton

## Church office & Registered Address:

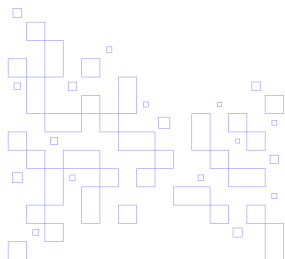
Unit P1 Bow Wharf  
221 Grove Road London, E3 5SN

## Website:

[www.eastendchurch.co.uk](http://www.eastendchurch.co.uk)

## Independent Examiner

S Cobbin & Co Limited  
ICAEW 15a Station Road  
Epping, Essex CM16 4HG





# Preaches

We started the year looking at Jonah and his journey running away from and eventually back to God's calling for his life. We began by looking at sin and the state of our world, and were reminded that God is not blind to it all but is present with us in it. We then looked at Jonah's indignation when God asked him to go to Nineveh and speak to the people. His response was to run and we looked at how often we can do the same. Jonah ran but he couldn't outrun God and as he reached the lowest place in the pit of a whale's stomach God again met him there. We explored the incredible picture of God's mercy and grace for the people of Nineveh and for us now and how this should affect how we live and how we treat those around us.



2



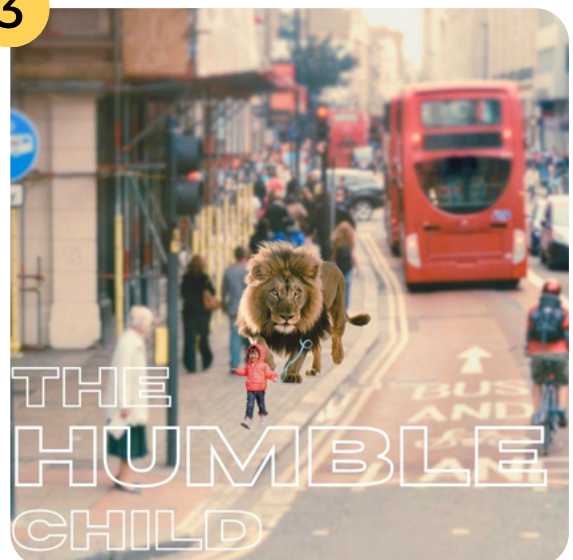
## Following Him, 1 Corinthians

We then moved to the book of 1 Corinthians and explored the journey of the early church and the teachings of Paul. We began looking at the example of Christ and our ultimate call to follow Him. As we journeyed further into Corinthians we examined the work of Holy Spirit and the gifts given to us as the church and how we can use them to serve each other and live lives worthy of the call of Christ.

## The Humble Child, Luke

We ended the year doing a series on The Humble Child looking at humility through the example of Jesus through the book of Luke. We started by looking at Mary and her humility, laying down her life to step into the plan God had for her as she found out she was to become the mother of Jesus. We then continued to look at Jesus and the humility with which He lived each moment. From His humble birth to laying down His life and the challenge for us as a church to live like Him.

3



# EAST END FACTS

*Over the last quarter EEC held 3 Baptism Services where we saw four people being baptized. We welcomed four guest speakers, and have seen a rise in the number of people coming forward to volunteer in one, or more church groups.*

Baptisms from March - Nov 2023



## 4 BAPTISMS

SUNDAY

## 4 GUEST SPEAKERS

PREACHES



## 45 VOLUNTEERS

SUNDAY SERVICE

# BOX UP CRIME!

Box up crime is an initiative set up to try to engage with youngsters who have little or no connection to church. It uses boxing to encourage and train them in the physical disciplines of boxing whilst rubbing shoulders with good male role models.

It has continued to progress this year with many new people coming through the doors. We now have referrals from local authorities when they come across either vulnerable or lonely individuals who they think would benefit from what we offer. We have also managed to recruit a regular team of trainers, so that it doesn't all depend on one man. This has seen the club go from strength to strength and become far more organised for those attending. We pray for the boxers at the end of each session, many of whom regularly attend East End Church on a Sunday morning. We are looking forward to seeing how God uses and progresses the club this next year...

**TOM HEAD - PASTOR**



**EAST END CHURCH**





# EAST END YOUTH

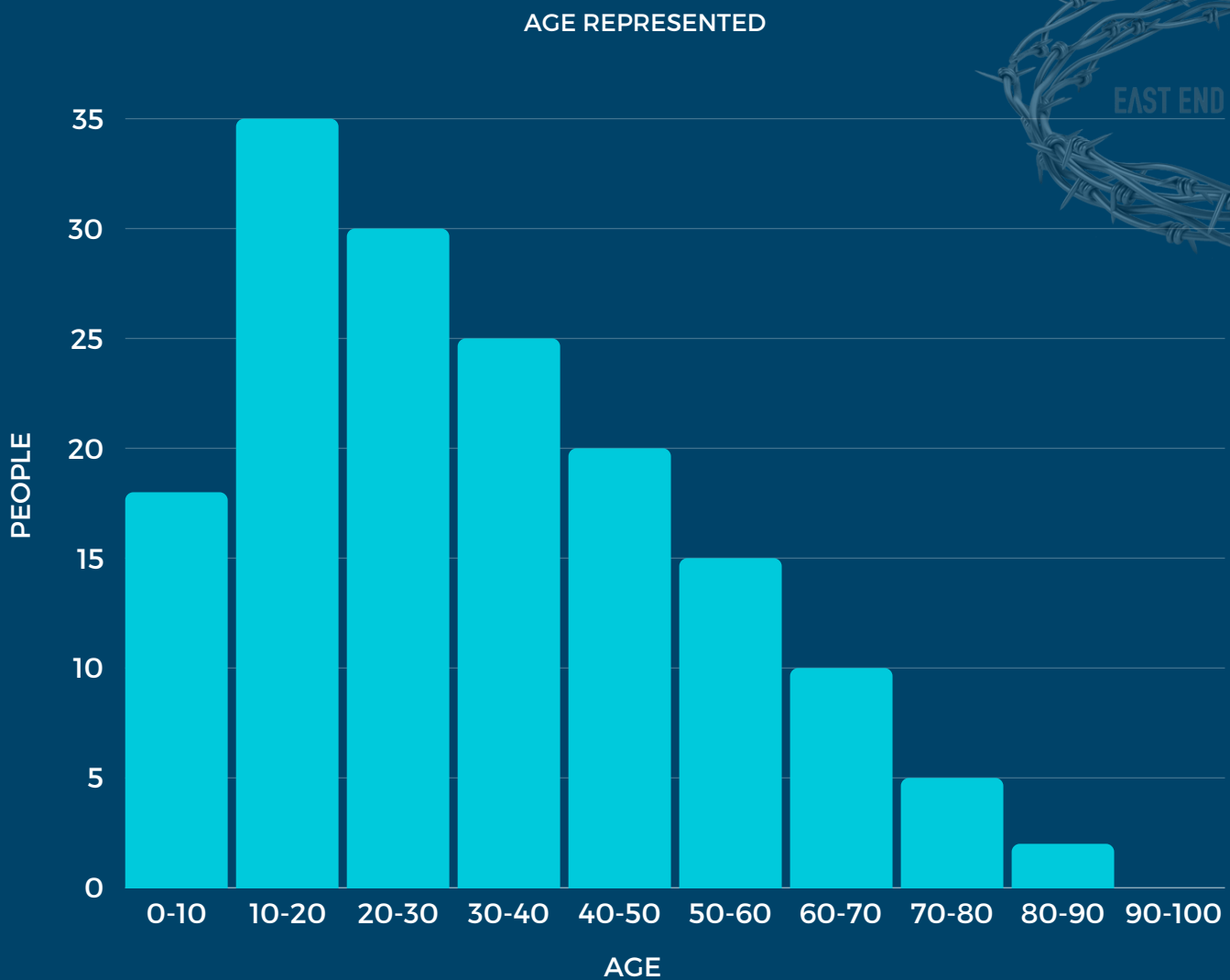
East End Youth is where young people are equipped, encouraged, and discipled into being followers of Jesus, whilst enjoying fun times and always with an abundance of snacks. It is an insane privilege, as well as having unique challenges, to be a part of the youth team, and to be speaking Jesus into the next generation. As a team, we get to witness young people taking their first steps towards Jesus and starting their independent relationship with him.

We ended 2023 using Alpha material, looking at the questions: "Is there more to life than this? Who is Jesus? And why did Jesus die?". We began 2024 looking at a range of relevant topics; such as Mental Health, Emotions, and Friendships. We are currently using the Discovery Bible Study material to get deeper into discipling the youth and for them to discover a love for the bible.

## RUBY HEAD



# East End Church Attendance



EEC has **16 teams** with **111 people** in them.  
EEC is made up of **43% male** and **57% female**  
They represent **16 nationalities** and **7 languages**.

*[Figures from iknowchurch 2023]*

# EEC COMMUNITY



## EEC INTERNATIONAL LUNCH

As a long queue meandered it's way up the hallway and people gathered around tables we saw the beauty of community as people from many nations gathered together. With many asylum seekers joining us this year we had the beautiful opportunity to be the hands and feet of Jesus to the people around us and to taste incredible food from around the world.



## COME DINE WITH ME

And dine we did! A popular event each year, we gathered at different homes throughout our church family to feast together and get to know each other more.



## MEETING WITH GOD

Each month we meet for a night of worship and prayer with no other agenda other than to seek His face and let Him change us in the process. We have had many special moments where Holy Spirit takes control and we are humbled by His presence and that He would meet with us here in East London.



## REAL LIFE ISSUES

We want to be a church that speaks into the reality of life, wrestling together with the tough questions and challenges that life faces us. This year we looked at singleness, living as a christian in the workplace and social media.

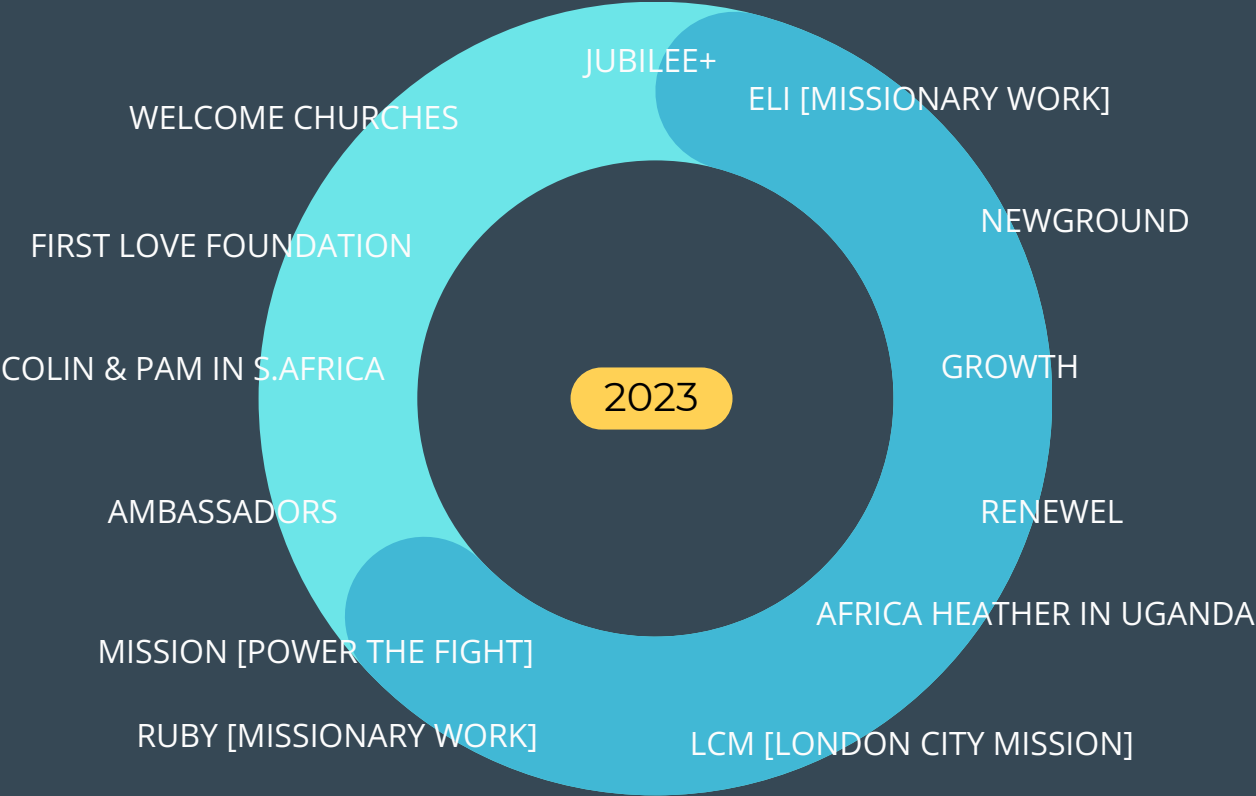


# Just Giving

## The Year in Review

In 2023 East End Church gave over £20,000 to various missions and charities as part of its charitable giving mandate

Information sourced from Quick Books - EEC [2023]



# Street Prayer Team

We're thankful to God for all we've seen Him do this last year as we've gone out into our community seeking to be led by Holy Spirit to love people, listen, pray for and share Jesus with them, if they're up for that.

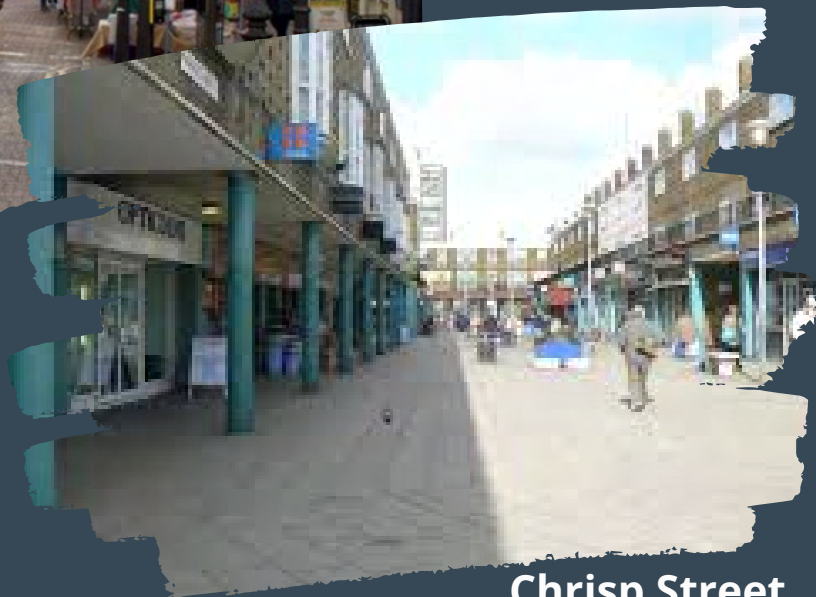
As we've gone, we've seen that God is at work in East London - He loves this community and is drawing people to Himself, and we have the privilege to join in with what He is doing. We've seen Jesus heal people with pain/other health issues, encounter people and encourage them. We've seen Him speak to team members with specific prophetic stuff that have opened up opportunities to share Jesus and His love and hope with people.

"We've seen Jesus heal people with pain/other health issues, encounter people and encourage them."

Benita Morrissey  
Prayer on The Streets



Roman Road



Crisp Street

# Street Prayer Team

## contd...

We've also seen people come along to church and kids club and take steps towards Jesus, which has been fantastic.

Kev has been meeting some people regularly on Roman Road in a local café to read through the bible. Another highlight has been taking a group of people to Encounter Camp and seeing people meet Jesus (some for the first time,) get free from some big stuff, worship Jesus passionately, have loads of fun together despite the rain, give some incredible Karaoke performances and win table tennis tournaments.

We're excited to see what Jesus has in store and wants to do this next year.

**The Street Prayer Team**

## Encounter Camp



EAST END CHURCH

EAST END CHURCH



# EAST END NAN'S

Tom and I love hosting this warm, friendly fortnightly group. We currently have around 8-10 regulars. It's refreshing, honest, filterless conversation and good coffee! Our chats go from Jesus in our week to keeping plants alive, holidays and who waited longer at their recent hospital appointments. A real moment this year was Albert almost getting locked in the cafe after Sandra the owner started to lock up while he was still in the loo! She said she jumped out of her skin when his hand appeared under the shutter! Laughter is a prominent feature at nans often in response to Toms slightly naughty jokes!

It's also a place where we can hear about what is happening in lives such as Tracey's recent surgery and Marlene's recent hospital stay and can share in that and pray and support and also share in each others good news too!! This coming week we are starting to introduce a more bible focused coffee date where all questions are welcomed and will be in a home as opposed to the cafe. Our plan is to do these every third meet up while continuing our usual cafe coffee dates.

We want EEC nans group to be a place where everyone feels welcome to come and chat and share stories. (and believe me when I say they are the best stories!)

LISA WARREN & TOM HEAD

EAST END CHURCH



# YOUNG ADULTS

Young Adults started in 2022 as a modest group of half a dozen young people meeting together, and finished it as a thriving, regular feature to church life thanks to God's provision. As a group we aim to build each other up in faith, while welcoming everyone regardless of where they're at with Jesus.

In January, we kicked off our meetings with a 'Real' series – which included discussions on faith and growth. We traded our own ideas and learnt what the Bible had to say on the topics, whilst eating everyone's favourite sweets - Squashies. Plus, we had plenty of chances for some laidback socialising – gathering for lunches together post-church and the odd pub trip. The highlight of the social calendar for the group came in June, and everyone put on their dancing shoes and finest clothes for Prom. With summer, things heated up in Young Adults as we tackled Hot Topics. We were all eager to hear what the Bible had to say about relationships, money diversity plus many more. We had a chance to delve deep into what may be the forefront issue of our generation, Mental Health, over a weekend away in the countryside. Teaching was the heart of our time away, though there was plenty of time to cement our connections as a group with games in the fields and meaningful chats over cups of tea. After a summer break, Thursday evenings in autumn were spent looking at Righteous Rebels – figures from the Old Testament who stepped out for God. This series saw some members of the group leading for the first time. It's been inspiring to see members gaining in confidence and skills as leaders. As a whole, we were encouraged by Andrea and Heather coming to chat about prophecy and teach us how we each could cultivate the gift of prophecy.



"On behalf of Young Adults, I'm very grateful to everyone who supported the group in 2023.

For those who've been praying for the group and its members, you are truly an integral part to our story. Plus, thank you to those who have generously hosted us (we offer free babysitting in return!), and to those who visited the group to impart some wisdom."

**SARAH WALLACE**





Last winter, East End Church once again partnered with GrowTH and a wide variety of other Churches across the Borough to host the emergency winter Night Shelter. EEC partnered with Victoria Park Baptist Church this season, who provided the venue, in their downstairs hall. We were therefore able to welcome homeless men and women into the Shelter on Saturday nights; providing them with a warm & safe space, a delicious dinner, conversation & friendship, their own bed overnight, and a breakfast the following morning. Another privilege each night in the Shelter was being able to hold Bible Studies to look at the love that God has for each and every person there - as well as being able to have long and deep conversations with those who are often so hopeless, about the hope that we have found. This has even led to around a dozen of the Shelter Guests attending EEC for a Sunday service, and a few of them have become regulars!

It is wonderful to be able to represent Jesus in a holistic way - serving those marginalised men & women in a practical and caring way - whilst also being able to attend to their spiritual needs and point them to Jesus. GrowTH are extremely thankful to each and every EEC member who served the Guests during last season; whether that was in the setting up of beds, cooking of a meal, sleeping overnight, leading of a Bible study, or any other valued volunteering job that was done - everyone has been happy to do whatever was needed whether it was a big or small task! Over the course of the season 128 homeless men and women were given shelter, with 43 being supported into more permanent and more positive onward accommodation. 7 Guests reported giving their lives to Jesus through the work of the Shelter. GrowTH also run a Day Centre and Housing project in Poplar, for which prayers are always highly valued, and are very soon beginning a fortnightly Bible Study for GrowTH's Residents in partnership with EEC.

It is a privilege to be able to serve those in the Shelter - and we look forward to partnering again next winter as we serve the last, lost, and least in our community together, and practically show them God's love!

NAOMI JOHNS  
DIRECTOR

GROWTH ARE EXTREMELY THANKFUL  
TO EACH AND EVERY EEC MEMBER  
WHO SERVED THE GUESTS DURING  
LAST SEASON





# EAST END CHURCH

## WOMEN

EEC women have had another brilliant year – gathering women of all ages from across the church once a month for breakfast. We've been blessed again this year with the space at Old Ford Rd Methodist church to host a buffet breakfast every other month. With fellowship, food, testimonies and teaching, together we lifted our eyes to Jesus.

Highlights included a morning of breakfast and worship, studying truth about women of the bible, being blessed by the EEC 'Young Adults' leading us in teaching and testimonies too as well as our very own Christmas mini market

which was a great opportunity to celebrate the talents of several women within ECC & invite friends. We've had opportunities to pray for one another, seek God for one another and build true friendships all over coffee, croissants, that amazing fruit platter and sometimes even cake! It's been a really encouraging time to see women stepping out in using their gifts each month in so many different ways.

On alternate months we've still enjoyed meeting together in local cafes which has been a great way of welcoming new women to EEC & getting to know one another.

We are expectant for more great times over breakfast in the coming year as we look forward to continuing to build His church in East London!

### EAST END CHURCH WOMEN

Highlights included a morning of breakfast and worship, studying truth about women of the bible, being blessed by the EEC 'Young Adults' leading us in teaching and testimonies too as well as our very own Christmas mini market



Karen Coster  
EEC

# Asylum Seeker Outreach

We have had the opportunity to meet and share Jesus with people from more than 30 nations as our relationship with asylum seekers who live locally grows. From Kids Club and football, to walking groups and language practice, form filling, cups of tea and lots of food we have seen God break down barriers and connect us to people who need to hear the hope of the gospel of Jesus.

Each week we run a women's walking group, a lunch and conversational english practice, kids football, bible studies, help with forms and applications and visitation etc. Another exciting door opened this year with the start of a bible study. We started in February with 8 people from 6 different countries and within a few weeks we had between 15-25 people coming along, with some weeks reaching to over 30 people gathered together to worship Jesus and study the bible together. It is so special to hear Jesus being proclaimed in many languages and our prayer is that as we meet and worship and pray that Holy Spirit will move through the corridors of this building and many more will come to know Him.



Over the past year we have had a Christmas Feast and International Meal. It was exciting to see many asylum seekers come along and also get involved cooking food and helping serve. For many who have come from cultures where everything is done in community they love the chance to get together and share food from their culture and to meet new people. This has been a great way to get to know more of the asylum seekers and to invite them along to church and Kids Club.

Each Sunday we go round the doors of the building and gather the children to bring them to Kids Club. One muslim mum said her daughter would get up at 6am every Sunday to get ready, it was her favourite time of the week! Another muslim boy came along to church with his family. He wanted to sit at the front to see the worship and clapped his way through the songs with a big smile on his face. During one of the worship songs he suddenly closed his eyes and held out his hands. A few days later while waiting to go to football he asked one of the leaders, "Who do you think is the most important person in the world?". He then proceeded to tell her he thought it was Jesus and when she asked him why, he said, 'It's because He's just so good!' Jesus is so good and we are so grateful for the many people from across the world who He is bringing to us and for the blessing they are to us as a church family.

HEATHER BENNETT , RACHEL HEAD & TEAM

“I have been alone here for 2 weeks feeling isolated and not knowing what to do. Then you knocked on my door and everything changed, you are the best thing that has happened to me in the last few weeks!”

*Single mother of 2 small children*



# EAST END CHURCH

## MEN

We have a wide range of men's activities throughout the year culminating in our annual weekend away, The Mentathlon. This testimony from Harry sums up the sort of things we get up to throughout the year.

This years Mentathlon had the theme of Fatherhood, the weekend being on the same weekend as Father's Day. I had not really considered this a particularly important issue for myself, as I don't have any children, but all the teaching we received pointed out that anyone can be a father figure. Brothers, sons and uncles can have fatherly attributes. It was also about becoming a man, and leaving behind childlike tendencies and embracing adulthood.



“Before it felt like a mountain to climb but now it's a mole hill. It's one step closer to being the man God wants me to be, not the child I used to be. I'm grateful to God for acting in my life. I now believe more sincerely that He is in fact a tangible person that can act in our lives, not just a guy we talk and sing about on a Sunday. It's made me want to pray for things more regularly and consistently.”

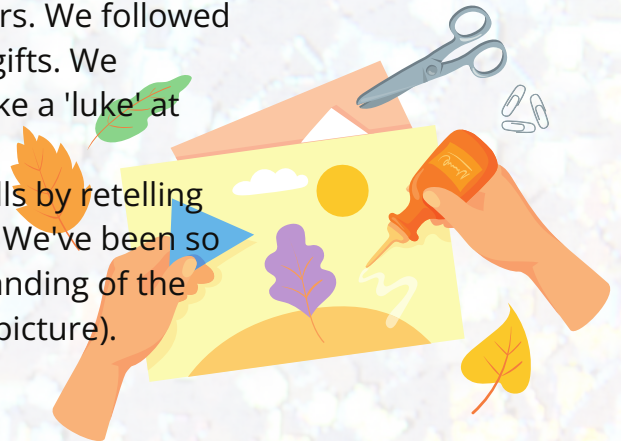






EEK started 2023 looking at the theme of 'Overflow' and how God's heart overflows to us, which then overflows to others. We followed this up by learning about and practising holy spirit gifts. We finished the year by joining Luke the detective to take a 'luke' at 'Who is Jesus?'

The EEKs have been practising their story telling skills by retelling stories from the bible using dressing up and props. We've been so impressed with their storytelling skills and understanding of the messages in them and how it applies to their lives (picture).



The kids have got stuck into making disciples by bringing their friends to kids club and we've seen loads of visitors to EEK. We have a fantastic team of people who go every week to collect children to come to kids club from a local asylum seekers hostel. I know it is a highlight for many to see them run to the front of the meeting on a Sunday morning! In the summer holidays we had another fun week of sports, crafts and bible teaching at a week long club run together with some other East London churches. We had around 35 local children each day hearing how much Jesus loves them and building relationships to last throughout the year.

**Lindsey Gray & Team**





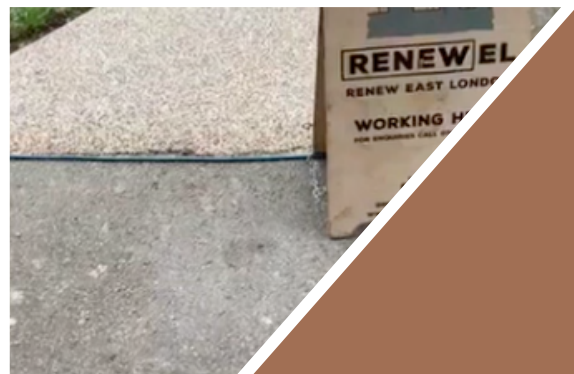


At RenewEL we continue to employ a team of landscapers installing gardens and community spaces in London. In 2023 we were commissioned to carrying out work at the Design Museum in Kensington. We built steps and set plants around the location. We also built a Pergola in East London, and completed a driveway project in Usher Road, and a play feature in Stoke Newington.

The front garden we built early this year was met with much praise from the client:

"We are really happy with the result." [Bisson Road]

**RACHEL ARNOLD - FOUNDER**





# EAST END ACADEMY



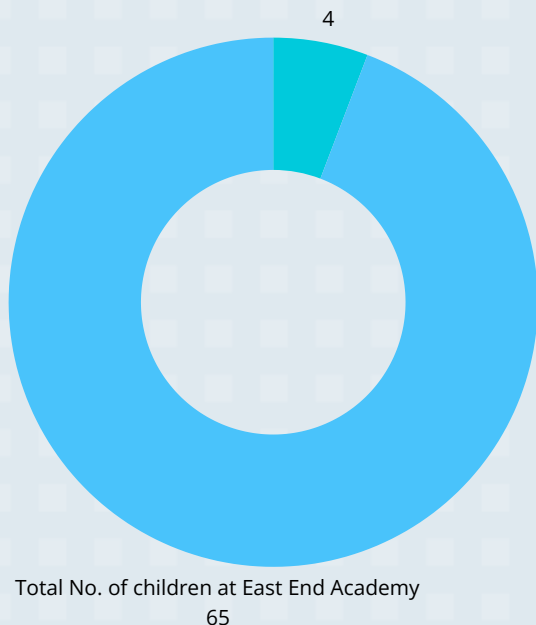
East End Academy is a football project for children in East London, run jointly by Ambassadors' Football and East End Church. It runs every Wednesday and Thursday for children aged 5 - 15 of all backgrounds and abilities. We teach football skills, play fun football related games, learn Bible stories and point children and families towards Jesus and wider EEC involvement.

Highlights from this last year include the footballing and spiritual development of our young players. In particular some of our young stars from a local asylum seekers hostel. It has also been great to see so many former players growing in leadership and coaching.

We narrowly missed out on our first silverware with two of the three age groups entered in the London Churches Football Tournament and narrowly losing in their finals.

## DAN OWEN - EAST END ACADEMY

- Total number of players who are now coaches
  - Total No. of children at East End Academy
- Total number of players who are now coaches







## STRUCTURE GOVERNANCE & MANAGEMENT

East End Church is a company Limited by Guarantee and registered as a Charity. It was incorporated on 8th December 2010 and registered as a Charity on 2nd March 2012. The directors of the charitable company ("the charity") and its Trustees for the purposes of the Charities Act 1993 and throughout their report are collectively referred to as "the Trustees". They are also the members. The Charity is governed by the Memorandum and the Articles of Association. East End Church is a member of the New Ground group of Churches.

The trustees, who meet around four times a year, are responsible of the ultimate financial and legal governance of the Church, having regard to the advice and guidance of the Elders team. The power of appointment or removal of trustees rests with the trustees. New trustees are selected from the members of the Church who are well known to the existing Board of Trustees and have demonstrated a high level of dedication and commitment towards the aims of the Church. The trustees bring experience in business, accounting and finance, law, charity administration and health and safety. All new trustees are taken through an induction outlining the roles and responsibilities required of them.

Law applicable to charities in England and Wales requires the Trustees to prepare financial statements for each financial year that give a true and fair view of the state of affairs of the Charity and of the profit and loss of the Charity for that period.

The trustees are responsible for keeping accounting records which disclose with reasonable accuracy, the financial position of the charity and which enable them to ensure that the financial statements comply with the Companies Act 2006. They are also responsible for safeguarding the assets of the charity and hence for taking reasonable steps for the prevention and detection of fraud and other irregularities. The trustees confirm that the accounts comply with current statutory requirements and those of the Charity's Trust Deed.

East End Church operates with a core Elders team of three who are responsible for setting the overall vision and objectives of the Church: Tom Head, Stephen Coster and Evans Bissessar. The trustees delegate the running of the charity to the Elders of the Church, who oversee the achievement of the objectives of the charity, day-to-day operational decisions and the co-ordination and strategic direction of East End Church's work. The progress of the Elder team is monitored regularly by the trustees. The trustees monitor finance, risk management and internal control, which includes implementing and enforcing relevant policies and procedures.

The main areas of charitable activity of East End Church are to advance the Christian faith and the provision of relief, education and assistance for persons in conditions of need, hardship or distress.

In order to achieve this, the objectives of East End Church are as follows:

- To advance the Christian faith worldwide by proclaiming and furthering the Gospel of God and His Son, The Lord Jesus Christ by preaching and teaching the Christian Faith.
- To relieve sickness and financial hardship, and to promote or preserve good health by the provision of funds, goods or services or any kind, including through the provision of counselling and support in such parts of the United Kingdom or the world as the Trustees from time to time may think fit.
- To advance education in such ways and in such parts if the United Kingdom or the world as the Trustees from time to time may think fit.

As an outworking of these objectives, East End Church's vision is to be a God glorifying large church, known in the local community, which supports and is supported by the New Ground group of churches and encourages, drives and supports global mission.

The Church seeks to work for the common good. We believe that the Church should help make the city a better place to live, and as a result we support people and projects that make living here better for everyone and particularly those who are less well off. The Church seeks to work for the spiritual renewal of East London. We believe that there is a great need for the nourishment of the human support and there is no better way to do this than to help those who are seeking faith to connect with their Maker through Jesus Christ.

When planning activities for the year, the trustees and leadership of the charity have considered the Charity Commission's guidance on public benefit:

- Charities and Public Benefit (PB1/PB2/PB3)
- The Advancement of Religion for the Public Benefit (December 2011)
- The Prevention of Relief of Poverty for the Public Benefit (December 2011)
- CC15b - Charity Reporting and Accounting: The Essentials (January 2013)

The vast majority of East End Church's events and activities can be accessed free of charge. When a charge has to be made, every effort is made to ensure that the cost does not exclude those for whom the activity would be especially beneficial (this includes financial subsidies where appropriate).

REGISTERED COMPANY NUMBER: 07464130 (England and Wales)  
REGISTERED CHARITY NUMBER: 1146201

**REPORT OF THE TRUSTEES AND**  
**FINANCIAL STATEMENTS**  
**FOR THE YEAR ENDED 31ST DECEMBER 2023**  
**FOR EAST END**  
**CHURCH**

**Cobbin Floyd Ltd  
Chartered  
Accountants 15a  
Station Road Epping  
Essex CM16 4HG**

**EAST END CHURCH**

**CONTENTS OF THE FINANCIAL STATEMENTS**  
**FOR THE YEAR ENDED 31ST DECEMBER 2023**

	Page
<b>Report of the Trustees Independent</b>	1
<b>Examiner's Report Statement of</b>	2
<b>Financial Activities Balance Sheet</b>	3
<b>Notes to the Financial Statements</b>	4
<b>Detailed Statement of Financial</b>	5 to 8
<b>Activities</b>	9 to 10

EAST END CHURCH

REPORT OF THE TRUSTEES  
FOR THE YEAR ENDED 31ST DECEMBER 2023

The trustees who are also directors of the charity for the purposes of the Companies Act 2006, present their report with the financial statements of the charity for the year ended 31st December 2023. The trustees have adopted the provisions of Accounting and Reporting by Charities: Statement of Recommended Practice applicable to charities preparing their accounts in accordance with the Financial Reporting Standard applicable in the UK and Republic of Ireland (FRS 102) (effective 1 January 2019).

**STRUCTURE, GOVERNANCE AND MANAGEMENT** Governing document

The charity is controlled by its governing document, a deed of trust, and constitutes a limited company, guarantee, as defined by the Companies Act 2006. limited by

**REFERENCE AND ADMINISTRATIVE DETAILS**

Registered Company number  
07464130 (England and Wales)

Registered Charity number  
1146201

Registered office  
Unit P1 Bow  
Wharf 221 Grove  
Road London E3  
5SN


**Trustees**

S M Coster, Esq F Macdonald, Esq (resigned 14.1.23) S D MacLachlan, Esq Ms R M Owen

Independent Examiner

Cobbin Floyd Ltd Chartered Accountants 15a Station Road Epping Essex CM16 4HG

Approved by order of the board of trustees on ..... and signed on its behalf by:

  
.....  
S M Coster, Esq - Trustee

INDEPENDENT EXAMINER'S REPORT TO THE TRUSTEES OF  
EAST END CHURCH

Independent examiner's report to the trustees of East End Church ('the Company')  
I report to the charity trustees on my examination of the accounts of the Company for the year ended  
31st December 2023.

Responsibilities and basis of report

As the charity's trustees of the Company (and also its directors for the purposes of company law) you are responsible for the preparation of the accounts in accordance with the requirements of the Companies Act 2006 ('the 2006 Act'). Having satisfied myself that the accounts of the Company are not required to be audited under Part 16 of the 2006 Act and are eligible for independent examination, I report in respect of my examination of your charity's accounts as carried out under Section 145 of the Charities Act 2011 ('the 2011 Act'). In carrying out my examination I have followed the Directions given by the Charity Commission under Section 145(5) (b) of the 2011 Act.

Independent examiner's statement

I have completed my examination. I confirm that no matters have come to my attention in connection with the examination giving me cause to believe:

1. accounting records were not kept in respect of the Company as required by Section 386 of the 2006 Act;
- . or the accounts do not accord with those records; or the accounts do not comply with the accounting
2. requirements of Section 396 of the 2006 Act other than any requirement that the accounts give a true
- . and fair view which is not a matter considered as part of an independent examination; or the accounts
3. have not been prepared in accordance with the methods and principles of the Statement of
4. Recommended Practice for accounting and reporting by charities (applicable to charities preparing their
- accounts in accordance with the Financial Reporting Standard applicable in the UK and Republic of
- Ireland (FRS 102)).

I have no concerns and have come across no other matters in connection with the examination to which attention should be drawn in this report in order to enable a proper understanding of the accounts to be reached.

Simon Cobbin, FCA Cobbin Floyd Ltd  
Chartered Accountants 15a Station Road  
Epping Essex CM16 4HG Date:

.....

# EAST END CHURCH

## STATEMENT OF FINANCIAL ACTIVITIES FOR THE YEAR ENDED 31ST DECEMBER 2023

	Notes	Unrestricted fund £	Restricted fund £	2023 Total funds £	2022 Total funds £
INCOME AND ENDOWMENTS FROM					
Donations and legacies		162,134	-	162,134	164,895
Other trading activities	2	6,205	-	6,205	4,644
Other income		497	-	497	194
Total		<u>168,836</u>	<u>-</u>	<u>168,836</u>	<u>169,733</u>
EXPENDITURE ON					
Charitable activities		<u>174,313</u>	<u>-</u>	<u>174,313</u>	<u>166,195</u>
NET INCOME/(EXPENDITURE)		(5,477 )	-	(5,477 )	3,538
RECONCILIATION OF FUNDS					
Total funds brought forward		<u>148,358</u>	<u>-</u>	<u>148,358</u>	<u>144,820</u>
TOTAL FUNDS CARRIED FORWARD		<u><u>142,881</u></u>	<u><u>-</u></u>	<u><u>142,881</u></u>	<u><u>148,358</u></u>

The notes form part of these financial statements



# EAST END CHURCH

## BALANCE SHEET 31ST DECEMBER 2023

	Notes	Unrestricted fund £	Restricted fund £	2023 Total funds £	2022 Total funds £
FIXED ASSETS					
Tangible assets	6	459	-	459	919
CURRENT ASSETS					
Debtors					
Cash at bank	7	13,629	-	13,629	31,647
		133,642	-	133,642	121,090
		<u>147,271</u>	-	<u>147,271</u>	<u>152,737</u>
CREDITORS					
Amounts falling due within one year	8	(4,849 )	-	(4,849 )	(5,298 )
NET CURRENT ASSETS		<u>142,422</u>	-	<u>142,422</u>	<u>147,439</u>
TOTAL ASSETS LESS CURRENT LIABILITIES		142,881	-	142,881	148,358
NET ASSETS		<u>142,881</u>	-	<u>142,881</u>	<u>148,358</u>
FUNDS	9				
Unrestricted funds				142,881	148,358
TOTAL FUNDS				<u>142,881</u>	<u>148,358</u>

The charitable company is entitled to exemption from audit under Section 477 of the Companies Act 2006 for the year ended 31st December 2023. The members have not required the company to obtain an audit of its financial statements for the year ended 31st December 2023 in accordance with Section 476 of the Companies Act 2006. The trustees acknowledge their responsibilities for

- (a) ensuring that the charitable company keeps accounting records that comply with Sections 386 and 387 of the Companies Act 2006 and preparing financial statements which give a true and fair view of the state of affairs of the charitable company as at the end of each financial year and of its surplus or deficit for each financial year in accordance with the requirements of Sections 394 and 395 and which other wise comply with the requirements of the Companies Act 2006 relating to financial statements, so far as applicable to the charitable company.

These financial statements have been prepared in accordance with the provisions applicable to charitable companies subject to the small companies regime.

The financial statements were approved by the Board of Trustees and authorised for issue on ..... and were signed on its behalf by:



S M Coster, Esq - Trustee

The notes form part of these financial statements

## EAST END CHURCH

### NOTES TO THE FINANCIAL STATEMENTS FOR THE YEAR ENDED 31ST DECEMBER 2023

#### 1. ACCOUNTING POLICIES

##### Basis of preparing the financial statements

The financial statements of the charitable company, which is a public benefit entity under FRS102, have been prepared in accordance with the Charities SORP (FRS102) 'Accounting and Reporting by Charities: Statement of Recommended Practice applicable to charities preparing their accounts in accordance with the Financial Reporting Standard applicable in the UK and Republic of Ireland (FRS102) (effective 1 January 2019)', Financial Reporting Standard 102 'The Financial Reporting Standard applicable in the UK and Republic of Ireland' and the Companies Act 2006. The financial statements have been prepared under the historical cost convention.

##### Income

All income is recognised in the Statement of Financial Activities once the charity has entitlement to the funds, it is probable that the income will be received and the amount can be measured reliably.

##### Expenditure

Liabilities are recognised as expenditure as soon as there is a legal or constructive obligation committing the charity to that expenditure, it is probable that a transfer of economic benefits will be required in settlement and the amount of the obligation can be measured reliably. Expenditure is accounted for on an accruals basis and has been classified under headings that aggregate all costs related to the category. Where costs cannot be directly attributed to particular headings they have been allocated to activities on a basis consistent with the use of resources.

##### Tangible fixed assets

Depreciation is provided at the following annual rates in order to write off each asset over its estimated useful life. 33% straight line.

##### Taxation

The charity is exempt from corporation tax on its charitable activities.

##### Fund accounting

Unrestricted funds can be used in accordance with the charitable objectives at the discretion of the trustees. Restricted funds can only be used for particular restricted purposes within the objects of the charity. Restrictions arise when specified by the donor or when funds are raised for particular restricted purposes. Further explanation of the nature and purpose of each fund is included in the notes to the financial statements.

##### OTHER TRADING ACTIVITIES

2.

	2023	2022
	£	£
Fundraising events	<u>6,205</u>	<u>4,644</u>

# EAST END CHURCH

## NOTES TO THE FINANCIAL STATEMENTS - continued FOR THE YEAR ENDED 31ST DECEMBER 2023

### 3. NET INCOME/(EXPENDITURE)

Net income/(expenditure) is stated after charging/(crediting):

	2023	2022
	£	£
Depreciation - owned assets	460	460
	<u>          </u>	<u>          </u>

### 4. TRUSTEES' REMUNERATION AND BENEFITS

No trustee is remunerated for their services as a trustee.

Trustees' expenses

There were no trustees' expenses paid for the year ended 31st December 2023 nor for the year ended 31st December 2022.

### 5. STAFF COSTS

The average monthly number of employees during the year was as follows:

	2023	2022
Trustees	-	1
Support staff	3	3
	<u>          </u>	<u>          </u>
	3	4
	<u>          </u>	<u>          </u>

No employees received emoluments in excess of £60,000.

### 6. TANGIBLE FIXED ASSETS

	Computer equipment £
COST	
At 1st January 2023 and 31st December 2023	1,379
DEPRECIATION	
At 1st January 2023	
Charge for year	460
At 31st December 2023	<u>920</u>
NET BOOK VALUE	
At 31st December 2023	459
At 31st December 2022	919
	<u>          </u>
	<u>          </u>

EAST END CHURCH  
NOTES TO THE FINANCIAL STATEMENTS - continued  
— FOR THE YEAR ENDED 31ST DECEMBER 2023

7.	DEBTORS: AMOUNTS FALLING DUE WITHIN ONE YEAR	2023 £	2022 £
	Other debtors	<u>13,629</u>	<u>31,647</u>

8.	CREDITORS: AMOUNTS FALLING DUE WITHIN ONE YEAR	2023 £	2022 £
	Social security and other taxes	-	2,169
	Other creditors	3,709	1,365
	Accrued expenses	<u>1,140</u>	<u>1,764</u>
		<u>4,849</u>	<u>5,298</u>

9.	MOVEMENT IN FUNDS		Net movement in funds	At
		At 1.1.23 £	£	31.12.23 £
	Unrestricted funds			
	General fund	148,358	(5,477 )	142,881
		<u>148,358</u>	<u>(5,477 )</u>	<u>142,881</u>
	TOTAL FUNDS	<u>148,358</u>	<u>(5,477 )</u>	<u>142,881</u>

Net movement in funds, included in the above are as follows:

	Incoming resources £	Resources expended £	Movement in funds £
Unrestricted funds			
General fund	168,836	(174,313 )	(5,477 )
	<u>168,836</u>	<u>(174,313 )</u>	<u>(5,477 )</u>
TOTAL FUNDS	<u>168,836</u>	<u>(174,313 )</u>	<u>(5,477 )</u>

Comparatives for movement in funds

		Net movement in funds	At
	At 1.1.22 £	£	31.12.22 £
Unrestricted funds			
General fund	144,820	3,538	148,358
	<u>144,820</u>	<u>3,538</u>	<u>148,358</u>
TOTAL FUNDS	<u>144,820</u>	<u>3,538</u>	<u>148,358</u>

EAST END CHURCH  
NOTES TO THE FINANCIAL STATEMENTS - continued  
— FOR THE YEAR ENDED 31ST DECEMBER 2023

9. MOVEMENT IN FUNDS - continued

Comparative net movement in funds, included in the above are as follows:

	Incoming resource s   £	Resources expended £	Movement in funds £
Unrestricted funds	169,733		
General fund		(166,195)	3,538
 TOTAL FUNDS	 <u>169,733</u>	 <u>(166,195)</u>	 <u>3,538</u>

10. RELATED PARTY DISCLOSURES

There were no related party transactions for the year ended 31st December 2023.

# EAST END CHURCH

## DETAILED STATEMENT OF FINANCIAL ACTIVITIES FOR THE YEAR ENDED 31ST DECEMBER 2023

	2023 £	2022 £
<b>INCOME AND ENDOWMENTS</b>		
Donations and legacies		
Donations and gifts	130,771	134,820
Gift aid income	31,363	30,075
	<u>162,134</u>	<u>164,895</u>
Other trading activities		
Fundraising events	6,205	4,644
Other income		
Bank interest	497	194
Total incoming resources	<u>168,836</u>	<u>169,733</u>
<b>EXPENDITURE</b>		
Charitable activities		
Pension's Wages Rent Motor	5,750	1,170
and travel Big Church	68,794	69,009
Students/Youth/Children's	24,165	23,615
Work Training/Discipleship/	294	190
Conferences	3,241	3,828
Books/Leaflets/Apps	4,114	3,323
Outreach/Socials Loving the	13,902	14,311
Poor, Growth Loving the	191	78
Poor, Other Giving	13,441	9,198
Advertising	763	136
	906	2,911
	20,088	18,304
	<u>2,502</u>	<u>2,108</u>
	158,151	148,181
<b>Support costs Management</b>		
Office rent Office Postage,	6,952	6,454
stationery and telephone	2,214	2,902
Training and development	1,189	891
Insurances, Licenses and	35	2,030
subscriptions	745	1,094
Legal/CCLI	874	939
Accountancy fees	1,140	1,020
Bank charges	143	343
Sundry expenses	1,405	1,881
Computer consumables	<u>1,005</u>	<u>-</u>
	15,702	17,554

This page does not form part of the statutory financial statements

EAST END CHURCH

DETAILED STATEMENT OF FINANCIAL ACTIVITIES  
FOR THE YEAR ENDED 31ST DECEMBER 2023

	2023 £	2022 £
Management Information technology		
Depreciation of tangible fixed assets	<u>460</u>	<u>460</u>
Total resources expended	<u>174,313</u>	<u>166,195</u>
Net (expenditure)/income	<u>(5,477)</u>	<u>3,538</u>

# THANK YOU!

EAST END CHURCH



Thank you to Ruby for the amazing preach graphics, to Finn and Bo for creating the serving video that inspired many more to get involved. Thank you to the welcome, refreshments, set up, East End Kids & Nippers, worship, production, safeguarding and preaching teams. Thank you also to our youth and young adults teams, street prayer team as well as our women's and men's group teams. Thanks Jenny, Heather and all who contributed for the work on this report, and to the whole Church for your ongoing passion for hearing, sharing and following the Word.



0208 616 9199



East End Church, Unit P1 Bow Wharf, 221 Grove Road, London, E3 5SN



[www.eastendchurch.co.uk](http://www.eastendchurch.co.uk)

EAST END CHURCH