

**CAERPHILLY MINERS CENTRE FOR THE COMMUNITY**

**CHARITY REGISTRATION NUMBER - 1145796**

**COMPANY REGISTRATION NUMBER - 7535484**

**REPORT AND FINANCIAL STATEMENTS**  
**FOR THE YEAR ENDED 31ST MARCH 2025**

<b>Contents</b>	<b>Page No.</b>
Report of the Management Committee	2-6
Independent Examiner's Report	7
Statement of Financial Activities	8
Balance Sheet	9
Notes to the Financial Statements	10-16

## **CAERPHILLY MINERS CENTRE FOR THE COMMUNITY**

### **REPORT OF THE MANAGEMENT COMMITTEE FOR THE YEAR ENDED 31ST MARCH 2025**

#### **Governance Objective and Management**

##### Governance

Caerphilly Miners Centre for the Community is a registered charity (Charity Registration Number 1145796) and is a company limited by guarantee (Company Registration Number 7535484), incorporated in 2011. The charity is governed by its constitution which was initially agreed in January 2011, with revised objects agreed by the Board of Management on December 8th 2011, and subsequently revised by a General Meeting on 5th February 2016. The revised constitution is lodged with Companies House and the Charity Commission.

##### Objectives

To further or benefit the residents of Caerphilly and the neighbourhood, without distinction of sex, sexual orientation, race or of political, religious or other opinions by associating together the said residents and the local authorities, voluntary and other organisations in a common effort to advance education and to provide facilities in the interests of social welfare, for recreation and leisure time occupation, with the objective of improving the conditions of life for the residents.

To advance the education of the public in the history and heritage of Caerphilly and in particular the history of mining and its role in the community and its effect on people's lives.

To establish or secure the establishment of the property belonging to the charity as a community centre and to maintain or manage or co-operate with any statutory authority in the maintenance and management of such a centre for activities promoted by the charity in furtherance of the above objects.

##### Trustees

Members of the Management Committee, who are directors for the purposes of company law and trustees for the charity are recruited from the members of the charity. They are selected on the basis of their skills, experience, and willingness to serve. Trustees' appointments are subject to approval by members of the charity. They can also be coopted between general meetings.

##### Trustees

Members of the Management Committee, who are directors for the purposes of company law and trustees for the charity are recruited from the members of the charity. They are selected on the basis of their skills, experience, and willingness to serve. Trustees' appointments are subject to approval by members of the charity. They can also be coopted between general meetings. .

## CAERPHILLY MINERS CENTRE FOR THE COMMUNITY

### REPORT OF THE MANAGEMENT COMMITTEE (Continued) FOR THE YEAR ENDED 31ST MARCH 2025

The Board of Trustees 2024-25 met 10 times during the year. All meetings were quorate.

Name	Attendances	Skills
	<u>/maximum</u>	
John Brinkworth	9/10	Trustee since 2023. Retired IT consultant, <del>digi</del> -volunteer
Jeff Cuthbert	3/3	Trustee since September 2024, member of Compliance Committee
Katherine Hughes BEM - Chair	10/10	Trustee since 2016. Retired chartered town planner. Chair 2023 - steward and volunteer, Strategic Planning and Finance committees
Nikki Prince-Isles	4/6	Trustee since 2022, Retired August 2024
Matt Sturgess	4/6	Trustee since 2022. Retired August 2024
Jenni Jones-Annetts	3/6	Trustee since 2021. Retired November 2024
Tina Kingsbury	3/3	Trustee since 2024. Registered Financial Planner
Ann Lewis	9/10	Trustee since 2014. Retired Teacher, Safeguarding Officer, steward and volunteer,
Elizabeth Scarlett	6/10	Trustee since 2023. Retired primary teacher. Member Projects Committee and volunteer
Richard Thomas	5/7	Trustee since 2024. Chief officer of Care & Repair Cardiff & Vale. Member - Finance & Compliance Committees
Catherine Uphill - Company Secretary	9/10	Trustee since 2023. Civil Servant with policy, governance & management experience, Company Secretary, Projects and Compliance committees

The Directors are responsible for managing the business of the charity as a Board subject to its members acting through a quorum of one third of the total committee membership (currently 3 members). The Board of Trustees may raise funds, buy or lease property, borrow money, collaborate with other bodies, generate reserves, establish sub-committees and employ and remunerate staff. The company has public liability insurance, indemnity insurance for the directors, and employers' insurance covering any paid staff and registered volunteers.

The board identified a need for more operational support at Sub-Committee Level in 2023-24 – in particular, covering finance, people resources, strategic planning, health and safety and buildings. Sub-committees have been set up and populated with trustees and coopted volunteers.

The board reviewed and updated employment, marketing, financial, health and safety, food, social inclusion, environmental and safeguarding policies. It reviewed its 2022-25 Strategic Plan and developed a new Strategic Plan for 2025-2028.

#### Strategic objectives

To build the capacity of our staff and volunteers to address the challenges of sustaining the building, the wider economic environment and climate change.

To retain our culture, values, mission and vision whilst sustaining our respected and vital community hub.

To develop more inspired business models, project activities, approaches to community engagement, partnerships and marketing.

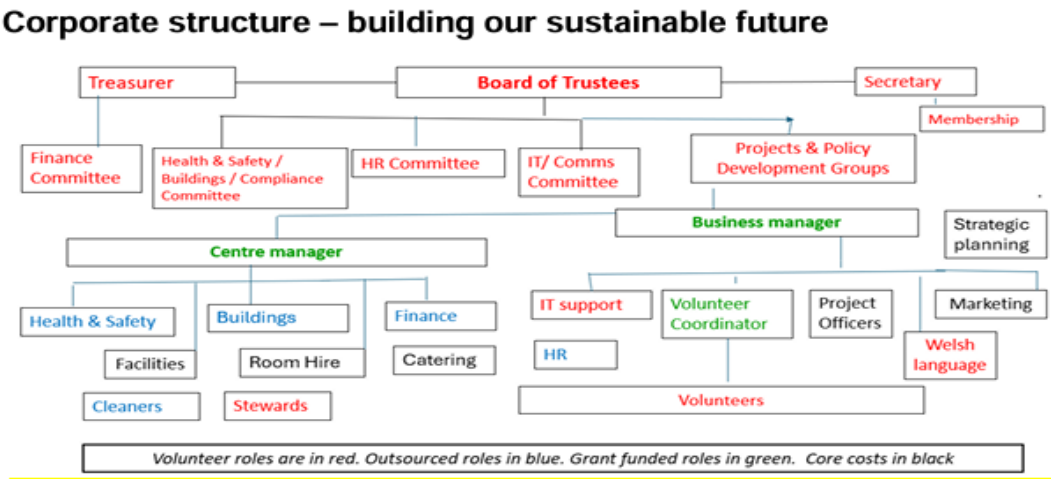
#### Six strategic themes:

1. Investing in our community
2. Building capacity to deliver
3. Breathing 'new life' into the Miners
4. Supporting community wellbeing
5. Climate change action
6. Celebrating our heritage.

CAERPHILLY MINERS CENTRE FOR THE COMMUNITY

REPORT OF THE MANAGEMENT COMMITTEE (Continued)  
FOR THE YEAR ENDED 31ST MARCH 2025

Corporate Structure



In 2023 we successfully applied for £257,000 National Lottery Community Fund (NLCF) grant for three years to underpin this structure and make it more sustainable. The NLCF grant, Building our Sustainable Future started in July 2023 and has three objectives:

1. Increasing our people capacity to manage a transformation to greater self-sufficiency
2. Creating new functional spaces
3. Creating new ways of working which achieve financial self-reliance

The Miners expanded its staffing in 2023 to provide a higher level of marketing and project development, to expand its facilities management and cleaning, health and safety, finance and catering. In 2024 we have outsourced or contracted out much of this activity. The cost of running the centre was £206,775 in 2024-25 including £11,202 for project activity (excluding salary and on costs).

Finance

Income generated comes from a mixture of room hire, project income and grants. In 2024-2025 the Wellness Hub generated £29,942, community and private hire £54,858, project activities, events and membership £40,034 and grant income £111,202 (including £30,000 from WCVA for the 2025-2026 financial year).

The largest area of spending for the centre was salaries, NI and pension totalling £106,850. Spending on building maintenance £21,400, gas, electric and water £20,365, cleaning £11,366. Project running cost were £11,202 and cafe and catering were £10,764. All other office costs totalled £24,828.

The Miners benefited from the following grants in 2024-25:

- CCBC Warm Hub - £4,000
- CCBC SPF IT Support - £2,580
- CCBC Community Empowerment Fund - £10,905
- GAVO RIF Energy Grant - £2,500
- WCVA Newid Small Grant Scheme - £994
- People and Places (Lottery) - £60,223

## CAERPHILLY MINERS CENTRE FOR THE COMMUNITY

### REPORT OF THE MANAGEMENT COMMITTEE (Continued) FOR THE YEAR ENDED 31ST MARCH 2025

Part our strategy to become more financially sustainable and less reliant on grants, whilst meeting the needs of our community. The trust continues to innovate, introduce new project activities, review its prices and find new ways of engaging volunteers. Projects include activities for older people, youth, children and early years, gardening, arts and crafts, music, active leisure, language, and support for mental health and wellbeing.

The 2024-2025 accounts also include a restatement of the 2023-2024 accounts. This is due to errors that were noticed in these accounts at year end (April 2025).

#### Volunteering

Our Volunteer Coordinator is currently supported by our Lottery Project – Building our Sustainable Future. In 2024-25 there were just over 100 registered volunteers donating an estimated 17,500 hours a year.

Project / activity 2024-2025	No of volunteers	Estimated total hours
Knitting project	69	5200
Gardening Group	22	3000
Coffee shop	10	1800
Stewards	9	1700
Older people's activities/ outreach	8	1000
Catering and events	12	1000
Other projects - Heritage, Welsh	20	1000
Repair cafe	20	960
After School clubs	7	1000
Stay and Play/ Glowyr Bach	10	1000

In addition is trustee time (750 hours) and the youth volunteering project (750 hours). The estimated monetary value of volunteer time 19,000 hours at the real living wage of £12.60 an hour is £239,400.

In January 2025 the trust successfully applied for 2-year funding from Volunteering Wales to broaden the diversity of our volunteer base and for 1-year funding from Comic Relief to support Youth Volunteering and subsidise early years and children activity. Funding for both projects began in April 2025.

#### Building work

The building work was largely completed by 2022 when we were able to open the function, music and craft rooms. A further £124,600 was used to complete the kitchen and refurbish the portico in 2023-24. The trust successfully applied to the Community Empowerment Fund in January 2024 for £21,800 of capital works to improve safety, disability access, and comfort. Approximately half this grant was used in 2024-25. Further funds have been secured for ongoing building work. Funding maintenance and repairs to our building remains a challenge.

#### Partnership working

Community consultation continues to guide and underpin the charity's work. The company has developed relationships with key stakeholders at strategic, operational and community levels. Caerphilly Miners has a memorandum of understanding to support its partnership working with United Welsh Housing Association. At strategic and operational level level, it has worked with the local authority, Gwent Police, GAVO, learning providers, local health board, other local community centres, churches and chapels, local enterprises and voluntary projects. The project has no political affiliations but has continued to enjoy political support from all political parties at Parliamentary, Welsh Government, County Council and Town Council levels.

## **CAERPHILLY MINERS CENTRE FOR THE COMMUNITY**

### **REPORT OF THE MANAGEMENT COMMITTEE (Continued) FOR THE YEAR ENDED 31ST MARCH 2025**

#### Membership

Members agreed at the 2024 AGM to extend our membership to everyone who uses the building. To date we have recruited 100 members and we hope to extend this in future years. Our membership numbers in 2024-25 increased slightly on the previous year, but remain at 115.

#### Status of report

This report has been prepared in accordance with the Statement of Recommended Practice: Accounting and Reporting by Charities (issued in March 2005) and in accordance with the special provisions relating to small companies within part 15 of the Companies Act 2006.

This report has been prepared in accordance with the Statement of Recommended Practice: Accounting and Reporting by Charities (issued in March 2005) and in accordance with the special provisions relating to small companies within part 15 of the Companies Act 2006.

Approved by the Board of Trustees on 28 November and signed on its behalf by:

---

Catherine Uphill, Company Secretary

**INDEPENDENT EXAMINERS REPORT TO THE  
TRUSTEES OF CAERPHILLY MINERS CENTRE FOR THE COMMUNITY**

I report to the trustees on my examination of the accounts of the above charity ("the Trust") for the year ended 31st March 2025.

**Respective responsibilities of trustees and examiner**

As the charity's trustees, you are responsible for the preparation of the accounts in accordance with the requirements of the Charities Act 2011 ("the Act").

I report in respect of my examination of the Trust's accounts carried out under section 145 of the 2011 Act and in carrying out my examination, I have followed all the applicable Directions given by the Charity Commission under section 145(5)(b) of the Act.

**Independent examiners' statement**

The charity's gross income exceeded £250,000 and I am qualified to undertake the examination by being a qualified member of the Association of Chartered Certified Accountants.

I have completed my examination. I confirm that no material matters have come to my attention in connection with the examination which gives me cause to believe that in, any material respect:

- the accounting records were not kept in accordance with section 130 of the Charities Act; or
- the accounts did not accord with the accounting records; or
- the accounts did not comply with the applicable requirements concerning the form and content of accounts set out in the Charities (Accounts and Reports) Regulations 2008 other than any requirement that the accounts give a 'true and fair' view which is not a matter considered as part of an independent examination.

**MRS KATHRYN SHORT  
ZEIDMAN & DAVIS  
CHARTERED CERTIFIED ACCOUNTANTS  
4 STATION TERRACE  
CAERPHILLY, CF83 1HD**

Dated: \_\_\_\_\_

**CAERPHILLY MINERS CENTRE FOR THE COMMUNITY****STATEMENT OF FINANCIAL ACTIVITIES**  
**FOR THE YEAR ENDED 31ST MARCH 2025**

	Note	Un- Restricted Funds £	Restricted Funds £	Total Funds 2025 £	Total Funds 2024 As restated £
<b>Incoming resources</b>					
<b>Incoming resources from generated funds:</b>					
	<b>2</b>	124,834	-	124,834	113,956
<b>Incoming resources from charitable activities:</b>					
Donations & Grants	<b>3</b>	-	45,810	45,810	160,399
<b>Total incoming resources</b>		124,834	45,810	170,644	274,355
<b>Resources expended</b>					
Charitable activities	<b>4</b>	125,481	81,294	206,775	303,143
<b>Net incoming resources before other recognised gains</b>		(647)	(35,484)	(36,131)	(28,788)
<b>Transfers between funds</b>		-	-	-	-
Total funds brought forward		81,460	53,691	135,151	163,939
<b>Total funds carried forward</b>	<b>8</b>	80,813	18,207	99,020	135,151



## CAERPHILLY MINERS CENTRE FOR THE COMMUNITY

### BALANCE SHEET

AS AT 31ST MARCH 2025

	Note	2025		2024 As restated	
		£	£	£	£
<b>Fixed Assets</b>					
Tangible assets	7		99,213		99,797
<b>Current Assets</b>					
Debtors and Prepayments		4,335		15,512	
Cash at bank and in hand		104,484		72,549	
		<u>108,819</u>		<u>88,061</u>	
Creditors: amounts falling due within one year		<u>8,905</u>	45,810	<u>15,874</u>	
Net current assets			<u>99,914</u>		<u>72,187</u>
Total assets less current liabilities			244,937		171,984
Creditors: amounts falling due after more than one year			34,715		36,833
<b>Net Current Assets</b>			<u>210,222</u>		<u>135,151</u>
<b>Net Assets</b>	8		<u>210,222</u>		<u>135,151</u>
<b>Unrestricted funds</b>					
General funds	9		80,813		81,460
<b>Restricted funds</b>	9		18,207		53,691
<b>Total Funds</b>			<u>99,020</u>		<u>135,151</u>
			111,202		-

The company was entitled to exemption from audit under s477 of the Companies Act 2006 relating to small companies.

The members have not required the company to obtain an audit in accordance with section 476 of the Companies Act 2006.

The directors acknowledge their responsibilities for complying with the requirements of the Companies Act with respect to accounting records and the preparation of accounts.

These accounts have been prepared in accordance with the provisions applicable to small companies subject to the small companies regime and in accordance with FRS102 SORP.

The Financial Report and Accounts were approved by the Board of Directors on 28 November 2025 and signed on its behalf by:

---

Catherine H Uphill

**NOTES TO THE FINANCIAL STATEMENTS**  
**FOR THE YEAR ENDED 31ST MARCH 2025**

**1. ACCOUNTING POLICIES**

**(a) Basis of accounting**

These accounts have been prepared under the historical cost convention with items recognised at cost or transaction value unless otherwise stated in the relevant notes to the accounts.

The accounts have been prepared in accordance with the Statement of Recommended Practice: Accounting and Reporting by Charities preparing their accounts in accordance with the Financial Reporting Standard applicable in the UK and Republic of Ireland (FRS 102) issued on 16 July 2014 and with the Financial Reporting Standard applicable in the UK and Republic of Ireland (FRS 102) and with the Charities Act 2011.

**(b) Fund Accounting**

Unrestricted funds are fund available for use at the discretion of the trustees in furtherance of the general objective of the charity and which have not been designated for other purposes.

Restricted funds are funds which are to be used in accordance with specific restrictions imposed by donors or which have been raised by the charity for particular purposes. The aim and use of the restricted funds are set out in the notes to the financial statements.

**(c) Incoming resources**

All incoming resources are included in the statement of financial activities when the charity is entitled to the income and the amount can be quantified with reasonable accuracy. The following specific policies are applied to particular categories of income:

Voluntary income is received by way of grants, donations, subscriptions and gifts and is included in full in the Statement of Financial Activities when receivable. Grants, where entitlement is not conditional on the delivery of a specific performance by the charity, are recognised when the charity becomes unconditionally entitled to the grant.

Donated services and facilities are included at the value to the charity where this can be quantified. The value of services provided by volunteers has not been included in these accounts.

Investment income is included when receivable.

Incoming resources from grants, where related to performance and specific deliverables, are accounted for as the charity earns the right to consideration by its performance.

**(d) Resources expended**

Expenditure is recognised on an accrual basis as a liability is incurred. Expenditure includes any VAT which cannot be recovered, and is reported as part of the expenditure to which it relates:

Charitable expenditure comprises those costs incurred by the charity in the delivery of its activities. It includes both costs that can be allocated directly to such activities and those costs of an indirect nature necessary to support them.

**CAERPHILLY MINERS CENTRE FOR THE COMMUNITY**

**NOTES TO THE FINANCIAL STATEMENTS (Continued)**  
**FOR THE YEAR ENDED 31ST MARCH 2025**

Governance costs include those costs associated with meeting the constitutional and statutory requirements of the charity and include the cost of preparing the accounts and the costs linked to the strategic management of the charity.

All costs are allocated between the expenditure categories of the SoFA on a basis designed to reflect the use of the resource. Costs relating to a particular activity are allocated directly, others are apportioned on an appropriate basis.

**(e) Fixed assets**

Fixed assets are stated at cost less accumulated depreciation. The costs of minor additions to equipment (those costing below £1,000) are not capitalised. Depreciation is provided at rates calculated to write off the cost of each asset over its expected useful life. No depreciation is provided on freehold land. The rates used are:

Office and computer equipment - 25% reducing balance

**CAERPHILLY MINERS CENTRE FOR THE COMMUNITY****NOTES TO THE FINANCIAL STATEMENTS (Continued)**  
**FOR THE YEAR ENDED 31ST MARCH 2025****2. Incoming resources from Generating Funds**

	Unrestricted funds	Restricted Funds	Total Funds 2025	Total Funds 2024 (As restated)
	£	£	£	£
Membership	1,016	-	1,016	106
Local Gaving	-	-	-	650
Room Hire	54,858	-	54,858	40,309
Wellness Hub	29,942	-	29,942	31,323
Older people activities	-	-	-	16,774
Elderberries	285	-	285	-
Digital skills	39	-	39	-
Chair excercies	1,087	-	1,087	-
Adult dance	915	-	915	-
Tai Chi	867	-	867	-
Men's sheds	1,184	-	1,184	-
Sewing	260	-	260	-
Stay & Play	496	-	496	-
Children	-	-	-	2,788
Children's Art	1,597	-	1,597	-
Children's Drama	377	-	377	-
Y Glowyr Bach	1,160	-	1,160	-
Café and catering	15,746	-	15,746	2,572
Repair café	586	-	586	-
Coffee and cards	127	-	127	-
Menopause Café	12	-	12	-
Dementia Café	9	-	9	-
Craft and chat	232	-	232	-
Wirework classes	-	-	-	492
Art classes	3,368	-	3,368	3,367
Adult art	5	-	5	-
Music group	407	-	407	-
Music group events	847	-	847	-
French classes	(25)	-	(25)	1,007
Gardening group	868	-	868	1,940
National Open Garden Day	372	-	372	-
Lego and Train club	235	-	235	-
Coding club	15	-	15	-
Insurance	-	-	-	(250)
Events	4,275	-	4,275	4,297
Bus trips	2,065	-	2,065	-
General fundraising	1,493	-	1,493	8,581
Funds raised for others	114	-	114	-
	124,834	-	124,834	113,956

## CAERPHILLY MINERS CENTRE FOR THE COMMUNITY

### NOTES TO THE FINANCIAL STATEMENTS FOR THE YEAR ENDED 31ST MARCH 2025

#### 3. Incoming Resources from Activities to further the Charity's Objects

	Unrestricted funds	Restricted Funds	Total Funds 2025	Total Funds 2024 (As restated)
	£	£	£	£
<b><u>Grant income</u></b>			-	
Awards for All	-	-	-	8,250
Caerphilly Town Council	-	-	-	400
CCBC	-	-	-	11,204
CCBC warm hub and fuel	-	4,000	4,000	23,354
CCBC SPF IT support	-	2,580	2,580	-
CCBC Community Empowerment	-	10,905	10,905	-
GAVO RIF Energy	-	2,500	2,500	-
Local giving	-	-	-	976
Moondance Grant	-	-	-	10,242
WCVA Newid	-	994	994	-
WCVA Volunteering in Wales	-	30,000	30,000	-
Welsh Government	-	-	-	38,317
Building Our Sustainable Futures - People & Places	-	60,223	60,223	54,341
Regional Integraqtion Fund older People	-	-	-	6,980
Catalyst Cymru Heritage	-	-	-	998
Western Power	-	-	-	1,750
Age Friendly	-	-	-	3,045
Other small grants	-	-	-	542
	-	111,202	111,202	160,399

## **CAERPHILLY MINERS CENTRE FOR THE COMMUNITY**

### **NOTES TO THE FINANCIAL STATEMENTS** **FOR THE YEAR ENDED 31ST MARCH 2025**

4.	Unrestricted funds	Restricted Funds	Total Funds 2025	Total Funds 2024 (As restated)
	£	£	£	£
<b>Resources expended</b>				
<b><u>Core &amp; Building Costs</u></b>				
Salaries	35,881	54,714	90,595	35,654
Employers NIC	8,875	4,381	13,256	3,256
Employers Pension	2,346	653	2,999	5,172
Telephone & internet	5,590	2,580	8,170	3,826
Electricity & gas	15,150	4,278	19,428	21,011
Cleaning	11,366	-	11,366	9,545
Water rates	937	-	937	890
Repairs & maintenance	9,224	12,176	21,400	15,938
Room hire	-	108	108	-
Insurance	1,012	-	1,012	3,167
<b><u>Office Costs</u></b>				
Photocopying , printing and postage	1,653	525	2,178	1,885
Subscriptions	-	-	-	1,758
Accountancy fees	3,768	-	3,768	2,064
Bank charges	113	-	113	77
Legal & professional fees	4,988	-	4,988	-
Cost of project activities	9,323	1,879	11,202	68,461
Equipment depreciation	584	-	584	1,558
Café and catering	10,764	-	10,764	-
General expenses	922	-	922	-
Loan interest	1,074	-	1,074	3,939
Website costs	-	-	-	36
Donations	-	-	-	304
Training	1,911	-	1,911	-
Grant released to buildings additions	-	-	-	124,602
	125,481	81,294	206,775	303,143

#### **5. Trustee Remuneration & Related Party Transactions**

No members of the management committee received any remuneration during the year.

#### **6. Taxation**

As a charity, Caerphilly Miners Centre for the Community Limited is exempt from tax on income and gains falling within section 505 of the Taxes Act 1988 or s256 of the Taxation of Chargeable Gains Act 1992 to the extent that these are applied to its charitable objects. No tax charges have arisen in the Charity.

**CAERPHILLY MINERS CENTRE FOR THE COMMUNITY****NOTES TO THE FINANCIAL STATEMENTS**  
**FOR THE YEAR ENDED 31ST MARCH 2025****7. Fixed Assets**

	Equipment, fixtures and fittings £	Long Leasehold Buildings £	Total Funds 2025 £	Total Funds 2024 £
<b>Cost</b>				
As at 1st April 2024	20,504	93,897	114,401	113,173
Additions	-	-	-	125,830
Grants	-	-	-	(124,602)
As at 31st March 2025	20,504	93,897	114,401	114,401
<b>Depreciation</b>				
As at 1st April 2024	14,604	-	14,604	13,046
Charge in the year	584	-	584	1,558
As at 31st March 2025	15,188	-	15,188	14,604
<b>Net Book Value</b>				
As at 31st March 2025	5,316	93,897	99,213	99,797
As at 31st March 2024	5,900	93,897	99,797	100,127

**8. Analysis of Net Assets Between Funds**

	General Funds £	Restricted Funds £	Total Funds 2025 £	Total Funds 2024 As restated £
Fixed Assets	88,046	11,168	99,213	99,797
Current assets	97,445	7,040	108,819	88,061
Current liabilities	(8,905)		8,905	(15,874)
Long Term Liabilities	(34,715)		34,715	(36,833)
Net assets	141,870	18,207	251,652	135,151

## CAERPHILLY MINERS CENTRE FOR THE COMMUNITY

### NOTES TO THE FINANCIAL STATEMENTS FOR THE YEAR ENDED 31ST MARCH 2025

#### 9. Movement in Funds

	At 1st April 2024 As restated	Incoming Resources	Outgoing Resources	Transfers between funds	At 31st March 2025
Regional Integration Fund	-	2,500	2,500	-	-
Moondance	6,444	-	6,444	-	-
Age Friendly	2,945	-	2,192	-	753
Awards for All	3,839	-	3,839	-	-
Western Power	1,750	-	-	-	1,750
Big Lottery People & Places	38,713	60,223	51,563	-	47,373
Community Empowerment	-	10,905	12,176	-	(1,271)
Newid	-	994	-	-	994
SPF IT Support	-	2,580	2,580	-	-
Volunteering in Wales	-	30,000	-	-	30,000
Warm Hub	-	4,000	-	-	4,000
<b>Total restricted funds</b>	<b>53,691</b>	<b>111,202</b>	<b>81,294</b>	<b>-</b>	<b>83,599</b>
<b>Unrestricted funds</b>	<b>81,460</b>	<b>124,834</b>	<b>(125,481)</b>	<b>-</b>	<b>80,813</b>
<b>Total funds</b>	<b>135,151</b>	<b>236,036</b>	<b>(44,187)</b>	<b>-</b>	<b>164,412</b>

#### 10. Prior period adjustment

The accounts have been restated to incorporate the impact of monies received during the year ended 31 March 2025 which fell due during the year ended 31 March 2024 and monies paid out during the year ended 31 March 2025 for which the liability arose during the year ended 31 March 2024. The change has resulted in reserves at 31 March 2024 increasing by £11,128

Summary of the prior year accounting impact	£
Increase in debtors	15,512
Increase in creditors	(9,156)
Increase in cash at bank and in hand	4,772
	<u>11,128</u>