

CAERPHILLY MINERS CENTRE FOR THE COMMUNITY

CHARITY REGISTRATION NUMBER - 1145796

COMPANY REGISTRATION NUMBER - 7535484

REPORT AND FINANCIAL STATEMENTS

FOR THE YEAR ENDED 31ST MARCH 2021

Contents	Page No.
Report of the Management Committee	1 - 7
Independent Examiner's Report	8
Statement of Financial Activities	9
Balance Sheet	10
Notes to the Financial Statements	11 - 14

CAERPHILLY MINERS CENTRE FOR THE COMMUNITY

REPORT OF THE MANAGEMENT COMMITTEE FOR THE YEAR ENDED 31ST MARCH 2021

Structure, Governance and Management

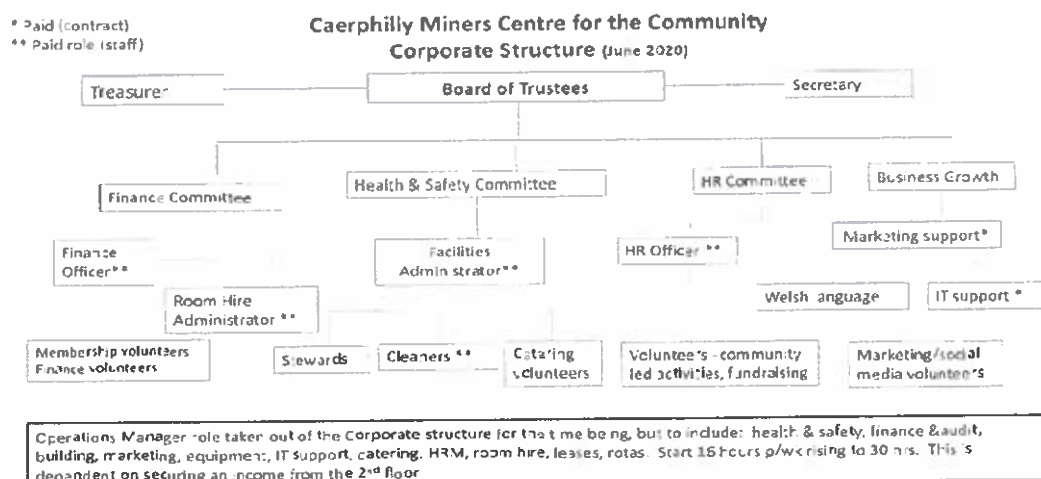
Governing Document

Caerphilly Miners Centre for the Community is a registered charity (Charity Registration Number 1145796) and is a company limited by guarantee (Company Registration Number 7535484), incorporated in 2011. The charity is governed by its constitution which was initially agreed in January 2011, with revised objects agreed by the Board of Management on December 8th 2011, and subsequently revised by a General Meeting on 5th February 2016.

Recruitment and Appointment of Trustees

Trustees (members of the Board of Directors) are recruited from the members of the charity and are selected on the basis of their skills, experience, and willingness to serve. Their appointment is approved by the members of the charity.

Organisational Structure



In 2019 CMCC introduced a new corporate structure including three new committees – Finance, Health and Safety and Human Resources and appointed a part time Finance Officer for the first time. The trust also benefited from grants to employ a part time Volunteer Coordinator for 12 months to support our expanding team of volunteers. New policies and procedures were adopted and existing policies were reviewed and updated.

In 2020 further changes took place to streamline the support for the organisation. We are still in the process of growing the business development and marketing area of our organisation. The turnover of CMCC was consolidated in 2019-20, but further growth is needed before we can afford an Operations Manager. In the meantime the work of the organisation is led by the Company Secretary / Project Manager on a volunteer basis.

CAERPHILLY MINERS CENTRE FOR THE COMMUNITY

REPORT OF THE MANAGEMENT COMMITTEE (Continued) FOR THE YEAR ENDED 31ST MARCH 2021

Objectives and Activities

The objects of the project are:

To further or benefit the residents of Caerphilly and the neighbourhood, without distinction of sex, sexual orientation, race or of political, religious or other opinions by associating together the said residents and the local authorities, voluntary and other organisations in a common effort to advance education and to provide facilities in the interests of social welfare, for recreation and leisure time occupation, with the objective of improving the conditions of life for the residents.

To advance the education of the public in the history and heritage of Caerphilly and in particular the history of mining and its role in the community and its effect on people's lives

To establish or secure the establishment of the property belonging to the charity as a community centre and to maintain or manage or co-operate with any statutory authority in the maintenance and management of such a centre for activities promoted by the charity in furtherance of the above objects.

Achievements and Performance

The objective of the company is to create a sustainable social enterprise on 'self-help' principles, which will use the building as a place where local people of all ages and circumstances want to be, where they can enjoy themselves and feel part of the community, can use local resources, learn from each other, and celebrate their heritage.

Amongst the many milestones achieved to date are CMCC's registration as a company in 2011 and a charity in 2012, securing a 99 year lease on the building from freeholders United Welsh in 2014, securing £800,000 funding to restore the integrity of the original hospital building and refurbish the ground floor in 2014-15, and opening the building to the community in September 2015. Between 2017 and 2020, CMCC secured a further £1.150,000 in grants for the development of a car park and external spaces and the refurbishment of the upper floors of the building.

The Charity has taken steps to populate the building through events and activities, classes and room hire, with a focus on younger and older members of the community, Welsh speakers and volunteers. As well as activities generated by the learning providers and the charity, the building is also in use for hire by local organisations and individual community members. Thus, the building provides an invaluable resource for our community.

Before the beginning of the financial year, the Miners was closed for twenty weeks as part of a nationwide endeavour to control the onslaught of the Covid-19 Pandemic. Previously all the charity's efforts had been expended in getting the community to access and use the building. Without an accessible building, it had to reconsider its purpose, function, means of supporting its community and its financial survival.

Its plans turned to securing alternative resilience funding, whilst creating new ways of supporting the well-being of the community through social activities and learning whilst safeguarding the community's health. Its efforts involved using social media to reach out to people isolated in their homes.

After the initial lockdown, CMCC returned to the centre with new approaches to delivery including online and hybrid (blended) provision and whatever was possible in person. This approach continued throughout the autumn.

Just before Christmas 2020, CMCC entered another lockdown, which continued until April 2021.

CAERPHILLY MINERS CENTRE FOR THE COMMUNITY

REPORT OF THE MANAGEMENT COMMITTEE (Continued) FOR THE YEAR ENDED 31ST MARCH 2021

The charity also secured further funds to complete the restoration of the building and bring the top two floors into use. The top floor will become a social enterprise, with rooms to let for local enterprises. The first floor will provide much needed space to support new community activities, allow existing projects to grow, and provide capacity for social distancing.

The trust remained committed to achieving well-being, social value and community benefit, but it had to refocus on its approach.

Financial Review

The charity generated £19,168 of its own resources of which £8,701 was from room hire. This compares with £51,430 in 2019-20 of which £34,039 came from room hire and the rest from activities and fund-raising. The Charity also secured £5,596 in donations, £40,700 in Covid Survival grants and £6,968 in furlough repayments.

Most of our pre-pandemic development had been generated through our own efforts and funding. This was not possible with our building forcibly closed because of the Covid-19 pandemic and we had to secure alternative sources of funding for our financial survival. During 2021 we applied for the following grants

Funder	What for	Amount
Caerphilly County Borough Council	Resilience funding to replace room hire	£25,700
Wales Council for Voluntary Action	Resilience funding to replace project activities	£15,000
GAVO	Marketing / Outreach (2 grants)	£7,900
Moondance	Digital inclusion (2 grants)	£22,854
Community Foundation in Wales	Marketing, outreach	£6,000
Magic Little grants	Supporting physical mobility	£500
National Lottery – Awards for All	Grow and Eat Project	£9,020
DS Smith	Children's outdoor play	£5,800
National Lottery Heritage	Digital Story Telling	£9,000
Fat Beehive Foundation	Digital Wildlife Garden	£2,230

We also brought forward £3,300 from an Awards for All National Lottery grant for dance, successfully applied to Coalfield's Regeneration Fund/Together for £5,000 for outreach work, and to Landfill Disposal Tax for £49,000 towards our Climate Change Garden.

Room Hire and Stewards

In pre-pandemic times CMCC relied on room hire for 60% of its income mostly generated from regular weekly bookings topped up by occasional all-day training and private social events. The charity had built up a team of 9 stewards and 12 catering volunteers, who between them managed 75 hours of room hire, supported 350 visits each week during term time, and generated £35,000 of income. Stewards were trained in first aid, food hygiene, manual handling, security, fire and health and safety. Catering volunteers supported the café, Repair Café, refreshments for workshops and social events. In March 2020 the charity ran training in first aid, food hygiene and health and safety in preparation for ongoing development.

CMCC's room hire activity was seriously damaged by the pandemic and the consequent lockdowns and intervening return under Covid restrictions. To mitigate its full impact, it let one of its downstairs rooms to an osteopath, which could remain open throughout the lockdown, but in total the trust's income from room hire and catering dropped to £8,701. More significantly the steward and catering teams were unable to operate and despite our efforts to keep them engaged, many of them have not returned to the centre.

CAERPHILLY MINERS CENTRE FOR THE COMMUNITY

REPORT OF THE MANAGEMENT COMMITTEE (Continued) FOR THE YEAR ENDED 31ST MARCH 2021

Building Project

In May 2015 an application was made to the Welsh European Funding Office (WEFO)/Welsh Government's (WG) Use it or Lose it programme. This was revised several times during 2016 and 2017 and a grant of £714,000 was eventually approved in 2017 as a Starter Project for the £35m Building for the Future programme 80% funded by WEFO/WG. By 2018 the total project cost had risen to £924,000, making the total cost of capital restoration £1.7m. The company has secured match funding of £210,000 and work on creating an external area was started in March 2019. Costs have risen since 2018 and it is anticipated that the eventual cost will be £1.9 million. Work in securing additional capital funding will take place in 2020.

Volunteering

CMCC secured funding from GAVO's health and social care fund and Community Foundation in Wales for a Volunteer Coordinator to work 16 hours a week for 12 months from July 2019 to recruit, support, and train volunteers. She worked for six months, was sick for three months and furloughed for three months, but in the first nine months of the project volunteers contributed 7500 hours of volunteering.

During the various lockdowns volunteers worked tirelessly to keep project activity going. The Elderberries worked as a team offering buddying, activities on Zoom, and creating a weekly programme of support. The Craft and Chat group set up a WhatsApp Group. The Stay and Play Mums supported each other. The Art Class set up a daily word art challenge. Our marketing group set up lockdown pages on the website with advice and support, daily challenges and activities. In this way the trust was able to connect with its community and the volunteers continued to have a purpose. As with the stewards, it has not been easy to bring back all the volunteers to the centre.

Project Activities

Projects have enabled us to deliver our ethos of mutuality, collaboration, social enterprise and self-help through self-standing projects run by small groups. They help to deliver activities to a wide range of target groups, generate footfall and contribute to our revenue. They provide a platform for recruiting, engaging, supporting and training volunteers, create social value and help us to meet our funders' targets and create sustainable demand for activities by building social networks.

It was only possible to run activities at the Miners Centre from the end of July to December and on a very limited, socially distanced basis mostly outside using a 8 x 4 metre patio we purchased in July 2020. The gazebo was taken down at the end of October 2020, which meant activities had to be further curtailed.

The projects we ran last year were:

Elderberries Social Afternoons for older people were run every week on zoom during the two lockdowns. Subsequently they were held at the centre on a hybrid basis.

The 50+ dance, Seated Dance and Chair Exercises were held on Zoom and subsequently as hybrid sessions.

Stay and Play was run 3 times a week between lockdowns but was not workable as a Zoom based activity.

Gardening group working sessions were held monthly during the summer months to build a raised bed in front of the centre and create raised beds within our Climate Change Garden for the Future.

Our weekly Crafts and chat 'free' 2-hour drop continued on WhatsApp during the lockdowns and then returned whenever it could.

Language classes in Spanish, French class and Welsh continued weekly on Zoom and have remained as Zoom based activity.

CAERPHILLY MINERS CENTRE FOR THE COMMUNITY

REPORT OF THE MANAGEMENT COMMITTEE (Continued) FOR THE YEAR ENDED 31ST MARCH 2021

We set up a Knitting Project with 26 members who between them knitted 43 blankets and donated them to Llamau and supported living schemes run by United Welsh and Caerphilly Council. This has continued and expanded.

We also set up lockdown art, craft, and gardening web-pages asking people for contributions

Our Music Group recorded a Christmas concert and broadcast it on YouTube.

The projects we were unable to run last year were:

- Cinema Club / Whist Club
- School Ambassadors (primary) and Youth Forum (secondary)
- Children's Craft and Film events
- Lego Club
- Christmas and Summer Fairs, fundraising, table-top sales
- Repair Cafe
- Our community café.

Marketing, Website and IT Development

We continued to use our Marketing Consultant to help us strengthen our marketing, use of social media and business development. During lockdown she has guided a team of volunteers to build our website and promote activities on Facebook, Instagram, and Twitter and assisted with applications for more than £50,000 of revenue grants.

Partnership Working

The company has developed relationships with key stakeholders at strategic, operational and community levels. Caerphilly Miners has a memorandum of understanding to support its partnership working with United Welsh Housing Association. At strategic and operational level level, it has worked with the local authority, Gwent Police, GAVO, learning providers, local health board, other local community centres, churches and chapels, local enterprises and voluntary projects. Community consultation continues to guide the charity's the work of the company. The project has no political affiliations but has continued to enjoy political support from all political parties at Parliamentary, Welsh Government, County Council and Town Council levels.

Plans for future periods

In February 2021 the Trustees reviewed the charity's strategic plan and agreed to implement the following objectives:

Objective 1 – Ethos and Vision: to maintain the current ethos and vision for the Caerphilly Miners Centre as a self-standing organisation, based on community consultation, a volunteer led approach, collaborative endeavour and a focus on respecting people, supporting their well-being and learning, language equality, inclusivity and sustainable development.

Objective 2 – Building Development: to complete the restoration of the building, adding 337m² to the existing 200m² of usable space to enable delivery of more activities that will benefit our community.

Objective 3 - CMCC Accessibility: To ensure that our activities are physically, psychologically, and financially accessible within a building that is well equipped, maintained and safe, including IT, environmental sustainability so that we can deliver an attractive resource for people to use.

CAERPHILLY MINERS CENTRE FOR THE COMMUNITY

REPORT OF THE MANAGEMENT COMMITTEE (Continued) FOR THE YEAR ENDED 31ST MARCH 2021

Objective 4 – Income Generation: Generate sufficient cash flow / income levels to cover our costs, repay our loan and generate reserves, whilst generating enough paid staff posts to sustain our project.

Objective 5 – Activities: Expand the level and range of activities to support well-being, social inclusion, learning and active leisure and enhance participation levels – including maintaining current projects, restoring our café and catering activities, creating our climate change garden for the future, enhancing opportunities for outreach to our older community, and creating new activities for early years and young people.

Objective 6 – Volunteering and training: Sustain and further develop opportunities for volunteering, personal development and training as a way of improving people's well-being and employment opportunities.

Objective 7 - To grow capacity at all levels: to develop board/committees, paid staff, volunteers, and participants, with a particular focus on creating an effective board, team of paid staff and an effective corporate structure. To become an investor in people and living wage employer with capacity to sustain employment.

Objective 8 – Heritage: to celebrate our social heritage and the legacy of the Miners of the Rhymney Valley.

Responsibilities of the Board of Management

The Directors are responsible for managing the business of the charity as a Board subject to its members acting through a quorum of one third of the total committee membership (currently 3 members). The Board may raise funds, buy or lease property, borrow money, collaborate with other bodies, generate reserves, establish sub-committees and employ and remunerate staff. The company has public liability insurance, indemnity insurance for the directors, and employers' insurance covering any paid staff and registered volunteers.

Members of the Board of Management

Members of the Management Committee, who are directors for the purposes of company law and trustees for the purposes of charity law, who served during the year and up to the date of this report are set out below.

Amy Alexander (Treasurer) (to October 2020)

Rob Bleach

Glenda Burnett

Dawn Cole (October 2020 – March 2021)

Ryan Cullen (to June 2020) (Vice Chair)

Jeff Cuthbert (Vice Chair to June 2020-October 2020)

Wayne David MP

Lyn Elliott (to October 2020)

Stuart Elliott (to October 2020)

Katherine Hughes (Company Secretary)

Jenni Jones Annetts (Trustee & Vice Chair from October 2020; Acting Chair from March 2021)

Ann Lewis

Rikki Pullen (Chair October 2020 to March 2021)

Sean Robinson (to June 2020) (Chair)

Richard Mann (Cooptee)

CAERPHILLY MINERS CENTRE FOR THE COMMUNITY

**REPORT OF THE MANAGEMENT COMMITTEE (Continued)
FOR THE YEAR ENDED 31ST MARCH 2021**

This report has been prepared in accordance with the Statement of Recommended Practice: Accounting and Reporting by Charities (issued in March 2005) and in accordance with the special provisions relating to small companies within part 15 of the Companies Act 2006.

Approved by the Board of Trustees on 13th December 2021 and signed on its behalf by:

Katherine Hughes, Company Secretary 

**INDEPENDENT EXAMINERS REPORT TO THE
TRUSTEES OF CAERPHILLY MINERS CENTRE FOR THE COMMUNITY**

I report to the trustees on my examination of the accounts of the above charity ("the Trust") for the year ended 31st March 2021.

Respective responsibilities of trustees and examiner

As the charity's trustees, you are responsible for the preparation of the accounts in accordance with the requirements of the Charities Act 2011 ("the Act").

I report in respect of my examination of the Trust's accounts carried out under section 145 of the 2011 Act and in carrying out my examination, I have followed all the applicable Directions given by the Charity Commission under section 145(5)(b) of the Act.

Independent examiners' statement

The charity's gross income exceeded £250,000 and I am qualified to undertake the examination by being a qualified member of the Association of Chartered Certified Accountants.

I have completed my examination. I confirm that no material matters have come to my attention in connection with the examination which gives me cause to believe that in, any material respect:

- the accounting records were not kept in accordance with section 130 of the Charities Act; or
- the accounts did not accord with the accounting records; or
- the accounts did not comply with the applicable requirements concerning the form and content of accounts set out in the Charities (Accounts and Reports) Regulations 2008 other than any requirement that the accounts give a 'true and fair' view which is not a matter considered as part of an independent examination.



**MRS KATHRYN SHORT
ZEIDMAN & DAVIS
CHARTERED CERTIFIED ACCOUNTANTS
4 STATION TERRACE
CAERPHILLY, CF83 1HD**

Dated: 13th December 2021

CAERPHILLY MINERS CENTRE FOR THE COMMUNITY

STATEMENT OF FINANCIAL ACTIVITIES
FOR THE YEAR ENDED 31ST MARCH 2021

	Note	Un- Restricted Funds £	Restricted Funds £	Total Funds 2021 £	Total Funds 2020 £
Incoming resources					
Incoming resources from generated funds:	2	18,478	690	19,168	51,861
Incoming resources from charitable activities:					
Donations & Grants	3	52,053	64,515	116,568	418,615
Total incoming resources		70,531	65,205	135,736	470,476
Resources expended					
Governance costs	4	56,187	52,734	108,921	455,250
Net incoming resources before other recognised gains		14,344	12,471	26,815	15,226
Transfers between funds		-	3,000	-	-
Total funds brought forward		71,604	25,284	96,888	81,662
Total funds carried forward	8	82,948	40,755	123,703	96,888

CAERPHILLY MINERS CENTRE FOR THE COMMUNITY

BALANCE SHEET

AS AT 31ST MARCH 2021

	Note	2021	2020
		£	£
Fixed Assets			
Tangible assets	7	16,284	4,035
Current Assets			
Debtors and Prepayments		-	3,412
Cash at bank and in hand		154,514	131,536
		<u>154,514</u>	<u>134,948</u>
Creditors: amounts falling due within one year		<u>936</u>	<u>936</u>
Net current assets		<u>153,578</u>	<u>134,012</u>
Total assets less current liabilities		169,862	138,047
Creditors: amounts falling due after more than one year		46,159	41,159
Net Current Assets			
Net Assets	8	<u>123,703</u>	<u>96,888</u>
Unrestricted funds			
General funds	9	82,948	71,604
Restricted funds	9	40,755	25,284
Total Funds		<u>123,703</u>	<u>96,888</u>

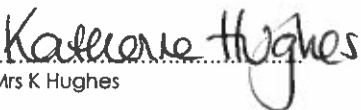
The company was entitled to exemption from audit under s477 of the Companies Act 2006 relating to small companies.

The members have not required the company to obtain an audit in accordance with section 476 of the Companies Act 2006.

The directors acknowledge their responsibilities for complying with the requirements of the Companies Act with respect to accounting records and the preparation of accounts.

These accounts have been prepared in accordance with the provisions applicable to small companies subject to the small companies regime and in accordance with FRS102 SORP.

The Financial Report and Accounts were approved by the Board of Directors on 13th December 2021 and signed on its behalf by:


Mrs K Hughes

CAERPHILLY MINERS CENTRE FOR THE COMMUNITY

NOTES TO THE FINANCIAL STATEMENTS **FOR THE YEAR ENDED 31ST MARCH 2021**

1. ACCOUNTING POLICIES

(a) Basis of accounting

These accounts have been prepared under the historical cost convention with items recognised at cost or The accounts have been prepared in accordance with the Statement of Recommended Practice: Accounting and Reporting by Charities preparing their accounts in accordance with the Financial Reporting Standard applicable in the UK and Republic of Ireland (FRS 102) issued on 16 July 2014 and with the Financial Reporting Standard applicable in the UK and Republic of Ireland (FRS 102) and with the Charities Act 2011.

(b) Fund Accounting

Unrestricted funds are fund available for use at the discretion of the trustees in furtherance of the general objective of the charity and which have not been designated for other purposes.

Restricted funds are funds which are to be used in accordance with specific restrictions imposed by donors or which have been raised by the charity for particular purposes. The aim and use of the restricted funds are set out in the notes to the financial statements.

(c) Incoming resources

All incoming resources are included in the statement of financial activities when the charity is entitled to the income and the amount can be quantified with reasonable accuracy. The following specific policies are applied to particular categories of income:

Voluntary income is received by way of grants, donations, subscriptions and gifts and is included in full in the Statement of Financial Activities when receivable. Grants, where entitlement is not conditional on the delivery of a specific performance by the charity, are recognised when the charity becomes

- unconditionally entitled to the grant.

Donated services and facilities are included at the value to the charity where this can be quantified.

- The value of services provided by volunteers has not been included in these accounts.
- Investment income is included when receivable.

Incoming resources from grants, where related to performance and specific deliverables, are

- accounted for as the charity earns the right to consideration by its performance.

(d) Resources expended

Expenditure is recognised on an accrual basis as a liability is incurred. Expenditure includes any VAT which cannot be recovered, and is reported as part of the expenditure to which it relates:

Charitable expenditure comprises those costs incurred by the charity in the delivery of its activities. It includes both costs that can be allocate directly to such activities and those costs of an indirect nature necessary to support them.

Governance costs include those costs associated with meeting the constitutional and statutory requirements of the charity and include the cost of preparing the accounts and the costs linked to the strategic management of the charity.

All costs are allocated between the expenditure categories of the SoFA on a basis designed to reflect the use of the resource. Costs relating to a particular activity are allocated directly, others are apportioned on an appropriate basis.

NOTES TO THE FINANCIAL STATEMENTS (Continued)
FOR THE YEAR ENDED 31ST MARCH 2021

Fixed assets are stated at cost less accumulated depreciation. The costs of minor additions to equipment (those costing below £1,000) are not capitalised. Depreciation is provided at rates calculated to write off the cost of each asset over its expected useful life. No depreciation is provided on freehold land. The rates used are:

Office and computer equipment	25% reducing balance
-------------------------------	----------------------

	Unrestricted funds £	Restricted Funds £	Total Funds 2021 £	Total Funds 2020 £
Memberships	990	-	990	985
Local Giving	2,874	690	3,564	1,962
Room Hire	8,701	-	8,701	34,039
Concerts	-	-	-	508
Elderberries	296	-	296	3,086
Exercise	526	-	526	1,218
Craft Events	61	-	61	1,232
Youth Activities	1,810	-	1,810	1,383
Line Dance	392	-	392	498
Art	550	-	550	-
Stay & Play	547	-	547	1,824
Café	552	-	552	2,057
Private Hire/Catering	-	-	-	1,612
French/Welsh/Spanish	1,179	-	1,179	1,266
Gift Aid	-	-	-	191
	18,478	690	19,168	51,861

Donations	4,385	1,211	5,596	519
Grants:				
Caerphilly County Borough Council	24,200	-	24,200	25,000
Garfield Weston Foundation	-	-	-	75,000
National Lottery Community Fund	-	-	-	12,000
United Welsh	-	-	-	1,050
Lloyds Bank Foundation	-	-	-	312
GAVO Grant	-	7,900	7,900	4,000
GE Grant	-	-	-	360
CF In Wales Grant	-	6,000	6,000	4,368
Welsh Government	-	-	-	292,696
Dance - Awards for All	-	-	-	3,310
Moondance Grant	-	22,854	22,854	-
WCVA COVID Survival	15,000	-	15,000	-
Magic Little Grants	-	500	500	-
DS Smith Charities	-	5,800	5,800	-
National Lottery Heritage	-	9,000	9,000	-
Grow and Eat - Awards for All	-	9,020	9,020	-
Fat Beehive Foundation	-	2,230	2,230	-
Western Power	1,500	-	1,500	-
Coronavirus Job Retention Scheme	6,968	-	6,968	-
	52,053	64,515	116,568	418,615

CAERPHILLY MINERS CENTRE FOR THE COMMUNITY

NOTES TO THE FINANCIAL STATEMENTS FOR THE YEAR ENDED 31ST MARCH 2021

	Unrestricted funds £	Restricted Funds £	Total Funds 2021 £	Total Funds 2020 £
4. Resources expended				
<u>Core & Building Costs</u>				
Wages (Caretaker)	4,776	-	4,776	4,225
Telephone & Internet	591	-	591	620
Electricity & Gas	5,135	-	5,135	7,452
Fire & Security	2,746	-	2,746	1,603
Cleaning	502	-	502	702
Water Rates	233	-	233	563
Repairs & Maintenance	3,208	-	3,208	2,668
Buildings Insurance	9,666	-	9,666	3,342
Payroll	467	-	467	566
<u>Office Costs</u>				
Public/Employer's Insurance	1,049	-	1,049	1,014
Postage/Stationery	1,008	-	1,008	53
Photocopying & Print	-	-	-	3,136
Subscriptions	1,050	-	1,050	832
Accountancy Fees	960	-	960	960
Just Giving	-	-	-	72
IT Costs	2,234	7,033	9,267	2,698
Photocopier Depreciation	126	-	126	168
Cost of Project Activities	5,615	8,108	13,723	9,637
Business Growth	-	-	-	7,500
IT Equipment Depreciation	619	-	619	825
Catering	-	-	-	2,754
Loan Interest	2,361	-	2,361	2,354
Website costs	86	-	86	600
Marketing	1,013	8,000	9,013	30
Health Trust Costs	-	-	-	-
Training	-	1,200	1,200	656
Administrator	6,849	-	6,849	12,093
Small Equipment	499	-	499	510
Coffee Machine Depreciation	264	-	264	352
Grant released to building additions	-	21,144	21,144	384,021
Grant released to equipment	-	7,249	7,249	-
Finance Assistant	5,130	-	5,130	3,244
	56,187	52,734	108,921	455,250

5. Trustee Remuneration & Related Party Transactions

No members of the management committee received any remuneration during the year.

6. Taxation

As a charity, Caerphilly Miners Centre for the Community Limited is exempt from tax on income and gains falling within section 505 of the Taxes Act 1988 or s256 of the Taxation of Chargeable Gains Act 1992 to the extent that these are applied to its charitable objects. No tax charges have arisen in the Charity.

CAERPHILLY MINERS CENTRE FOR THE COMMUNITY

NOTES TO THE FINANCIAL STATEMENTS FOR THE YEAR ENDED 31ST MARCH 2021

7. Fixed Assets

	Equipment £	Long Leasehold Buildings £	Total Funds 2021 £	Total Funds 2020 £
Cost				
As at 1st April 2020	16,072	-	16,072	126,233
Additions	7,249	34,402	41,651	273,860
Grants	(7,249)	(21,144)	(28,393)	(384,021)
As at 31st March 2021	16,072	13,258	29,330	16,072
Depreciation				
As at 1st April 2020	12,037	-	12,037	10,692
Charge in the year	1,009	-	1,009	1,345
As at 31st March 2021	13,046	-	13,046	12,037
Net Book Value				
As at 31st March 2021	3,026	13,258	16,284	4,035
As at 31st March 2020	4,035	-	4,035	115,541

8. Analysis of Net Assets Between Funds

	General Funds £	Restricted Funds £	Total Funds 2021 £	Total Funds 2020 £
Fixed Assets	16,284	-	16,284	4,035
Current assets	113,759	40,755	154,514	134,948
Current liabilities	(936)	-	(936)	(936)
Long Term Liabilities	(46,159)	-	(46,159)	(41,159)
Net assets	82,948	40,755	123,703	96,888

9. Movement in Funds

	At 1st April 2020 £	Incoming Resources £	Outgoing Resources £	Transfers between funds £	At 31st March 2021 £
Restricted funds:					
Grants & Donations					
GAVO - Business Development	-	2,000	2,000	-	-
GAVO - Older People	-	5,900	5,150	-	750
Welsh Government	21,144	-	21,144	-	-
Climate Change	4,140	-	-	-	4,140
Dance 50+	-	-	2,740	3,000	260
Magic Little Grant	-	500	-	-	500
Moondance	-	22,854	9,112	-	13,742
National Lottery Heritage	-	9,000	6,370	-	2,630
D S Smith Charities	-	5,800	-	-	5,800
Awards for All - Grow and Eat	-	9,020	218	-	8,802
Fat Beehive Foundation	-	2,230	-	-	2,230
Craft and Chat fundraising	-	550	-	-	550
Welsh Group fundraising	-	140	-	-	140
Just Giving for Garden	-	566	-	-	566
Aviva - exercise classes	-	645	-	-	645
CF in Wales	-	6,000	6,000	-	-
Total restricted funds	25,284	65,205	52,734	3,000	40,755
Unrestricted funds	71,604	70,531	56,187	(3,000)	82,948
Total funds	96,888	135,736	108,921	-	123,703

