

# RESHAPING POSSIBILITIES



**ANNUAL REPORT AND ACCOUNTS 2023-2024**



# CONTENTS

MESSAGE FROM YOUNG PRIME MINISTER	4-5
MESSAGE OF CHAIR	6-7
MISSION AND VISION	8-9
THEORY OF CHANGE	16-17
OUR PROJECTS	18-29
INDEPENDENT EXAMINER'S REPORT:	34
STATEMENT OF FINANCIAL ACTIVITIES:	35
BALANCE SHEET/ NOTES:	36-41



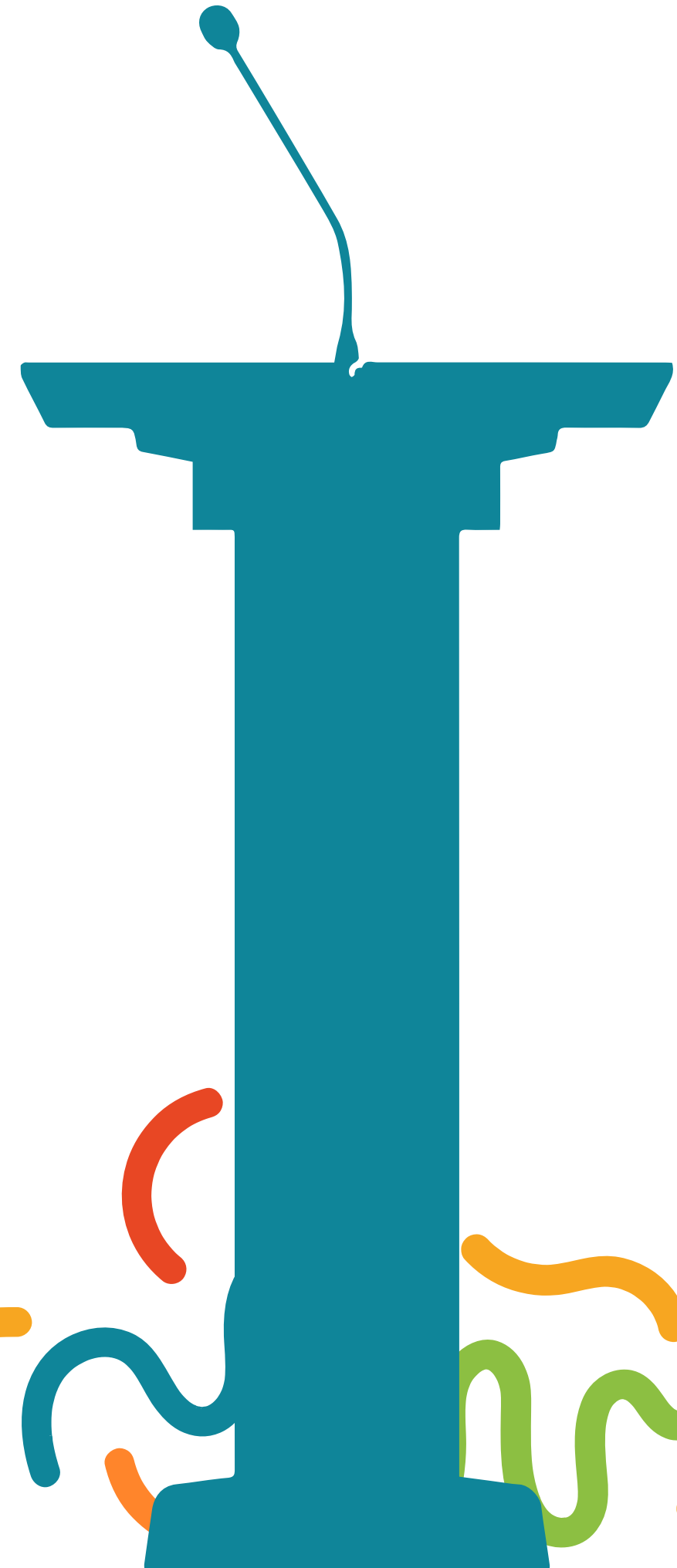
# MESSAGE FROM YOUNG PRIME MINISTER

Thank you for voting me as Prime Minister of our Youth Parliament. Working with the governing board and my inspiring peers has been amazing. Stressful. Life-changing. We have established a great parliamentary system where it's "nothing about us without us."

We have improved projects in Young & Inspired and in the community. I'm exceptionally proud of "Wear and Share," our idea that many other groups and schools picked up locally, started a youth social action movement. So many blankets, sports gear, puzzles, etc. have found a great new home and loving owners, and we are reducing waste.

We have chosen the theme "Reshaping Possibilities" because this speaks to us, and we are so grateful to Young & Inspired for believing in us. My fellow youth, the future is ours to shape. Let us rise to the challenge with courage and conviction, knowing that our strength lies not in our age, but in our resolve. Together we are unstoppable.

Goldy H





# CHAIR STATEMENT

We have made it to 2024. I can't say intact, but we are stronger, more equitable, and more sustainable.

Firstly, I must applaud our Play Parliament. You have worked exceptionally well together to reshape and improve Young & Inspired. The only thing I disagree with is that the term "play" seems misplaced. You have shown remarkable maturity, insight, and social responsibility. The Play Parliament began somewhat like a holiday camp, with teams divided into offices such as the Office of Sports, Culture, and Cabinets, along with Prime Ministers. However, you were ahead of the curve, bringing this governance structure to Young & Inspired, which has truly elevated us to the next level.

Others also deserve recognition. This includes our amazing staff. They strike the perfect balance. They let youth lead and design. But, they step in at the right time to offer support. They ensure a healthy balance of responsibility. Our volunteers gave us their all and saved us a total of £28k in addition to the special vibe that money can't even pay for. Also, our funders have stayed steadfast despite the cost-of-living crisis. This is especially true of The National Lottery Community Fund, Sport England Hackney Council, St James's Place Foundation and Lloyds Bank. They have given enhanced support for building our capacity.

Despite the financial challenges and rising living costs we've faced, I am proud to report that Young & Inspired has thrived. Despite a drop in income, we have managed our finances prudently, ensuring that our programs and services continue to make a meaningful impact. While the government suggests improvements in the UK's financial position, our surveys indicate a different reality. People are feeling the pinch more than ever before.

If you're reading this, you're already part of our mission to support youth. Your involvement and support make a huge difference to our work. We invite you to join us in shaping the future, inspiring change, and rewriting possibilities for the young people we serve.

Kaila Klein

Chair of Trustees



# OUR MISSION

CHILDHOOD BELONGS TO ALL CHILDREN. NO CHILD SHOULD BE FORCED TO GROW OLD PREMATURELY. TOGETHER WE ENSURE THAT ALL CHILDREN SHOULD HAVE A CHILDHOOD WHICH EMPOWERS THEM TO GROW UP *NOT OLD*.

# OUR VISION

EVERY CHILD SHOULD ASPIRE TO ACHIEVE BUT NO CHILD SHOULD TAKE THE TEST OF HUNGER, EXCLUSION OR ISOLATION.





# WE HAVE CHANGED OUR MODEL

To the average person, a close-up view of a blueprint might appear as just a jumble of shapes and lines. Similarly, parenting can sometimes feel like a series of random decisions. Laying a strong foundation, especially in a child's first five years, sets the groundwork for their future. It's like creating a blueprint for their life, guiding them to success and fulfillment. Families need stability and the fulfillment of basic needs to establish healthy relationships. Financial instability often leads to arguments, which can be distressing for children and impact their emotional well-being and academic performance. That's why we've evolved our model to prioritize support for families instead of just offering a range of services for children. By addressing the root causes of instability, we create a more supportive environment for children to thrive. This is especially true for young and teenage parents.





# WE HAVE 2 PATHWAYS OF SUPPORT

Our core clients are usually families with complex needs. They use the pathway depicted below. One-off clients, usually children joining without parents, join one or two short-term services. These are seasonal services, such as 6 months of treehouse teens and playscheme. They join to address a short or acute need.



# MEASURING TOOL

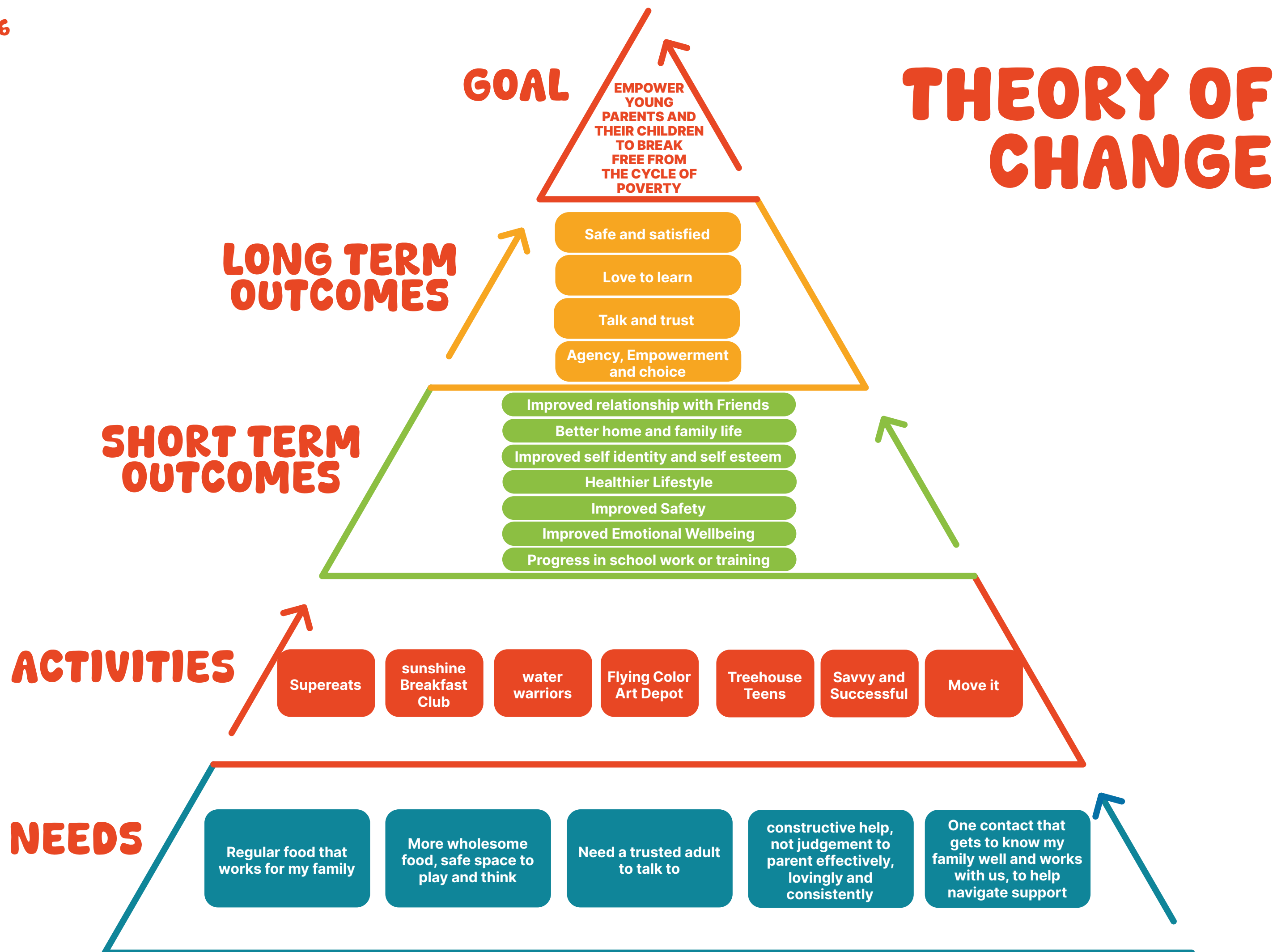
Our Family Star measuring tool, part of the Outcome Star framework, is completed collaboratively by families and their support workers to assess changes across seven aspects of family life:



Measuring our impact is straightforward for some families. This is the case for those seeking support for specific outcomes, like providing breakfast for two preschoolers. However, for others, the issues are complex and multi-layered. For them, quantifying progress may be harder. In these cases, our support workers build strong relationships with clients over weeks or months. These relationships enable us to recognize change.

"I'm calling to let you know that you can take our name off the SuperEats regular list. We've enjoyed over 60 meals from you this year, and I'm excited to share that I got promoted! With this new opportunity, I'll be able to afford our meals, and I'm sure others need it more than we do. Thank you tons for the meals! And I'm not even mentioning how Ruchy, my support worker, and my work coach guided me to present my request to my employer. I can't believe we're up to here." Adela W





# SUNSHINE BREAKFAST CLUB:

The Sunshine Breakfast Club offers daily brunch for toddlers and preschoolers accompanied by their parents, as well as holiday brunch for children of all ages.

We serve classic favorites such as toast, eggs, colorful veggies, a variety of cereals, and fun yogurts for birthday kids.

"While being served omelettes is a delight in itself, here, a volunteer goes the extra mile to cook them into heart shapes, perfectly nestled in the center of the toast. My toddler is enamoured and so am I. Its hard not to feel touched and loved here." T.E

"As a mother, I know breakfast is the most important meal of the day, and I never let my children leave without it. However, as the end of the month approaches, I often have to add water to the milk and occasionally skip my own breakfast. I am so relieved that my children start their school day with a full, nutritious breakfast at the Sunshine Breakfast Club. Additionally, a volunteer accompanies them down the road to their schools. It may be a coincidence, but both of their grades have improved since we joined the club." Bella,



**THIS YEAR WE  
SERVED OVER 12000  
BREAKFATS.**



# SAVVY AND SUCCESSFUL

**At Savvy and Successful, we take pride in our innovative approach that challenges traditional employment pathway programs.**

We recognize that existing services have not effectively met the needs of our beneficiaries. Instead of offering a predefined pathway, we employ a back-to-front approach that empowers participants with agency. This allows them to take control of their journey and develop transferable skills that can lead to employment in ways that best suit them and their families. This approach enables them to drive the change their family needs, adjust pathways as their needs evolve, or even take a unique, untrodden route if it helps them stay and succeed at work.

Our commitment goes beyond the norm by providing specialized support, such as negotiating work-from-home arrangements, flexible work hours, conflict resolution, advocating for living wage payments, and offering prepaid cards for bus fares to assist those with longer commutes and low incomes. Additionally, we offer paid childcare bursaries to support parents during upskilling initiatives.

**What truly distinguishes us is our Trade Secrets Soft and Transferable Skills Program. Unlike generic workshops, our program explores unique areas, identifying genuine barriers and facilitating the acquisition of practical, attainable skills.**



**16**

people found  
jobs for first  
time

**23%**

of local  
employers  
employing  
locally

**21**

people improved  
work conditions or  
pay

**4**

people  
opened  
own micro  
businesses

**12**

participants  
engaged  
in further  
training

# SUPEREATS

**SuperEATS is on a mission to make eating effortless for everyone. Inspired by Uber Eats, SuperEats rescues surplus food from events, caterers, and restaurants.**

We repackage it in compartmentalized meal containers at a regulated kitchen facility. These meals are labeled and frozen for later delivery, supplemented by milk, fruits, vegetables, and other perishables. SuperEats aims to assist teenage mothers who can't afford basic food necessities, especially during times of cost spikes, as well as families living hand-to-mouth, reaching the last week of the month with empty pockets. It's a win-win situation for young recipients, catering businesses, and the environment.

"We have been struggling with money in our family for months now and we were not able to afford even the basics, but receiving charity was too degrading. With the cost-of-living crisis looming over our heads; it was not a question of Eat or Heat.

We had none. Resignedly we agreed to a referral. Being a part of SuperEats was life-changing. Their meals are delicious, free and delivered right to our doorsteps. The best part was that Young & Inspired thanked us for saving the planet and avoiding good food from going to waste. It made us feel a whole lot better. I cannot thank you enough."

Chana Greenwald





# MOVE IT MUM

**Move it Mum and Infants** offers teenage and young mothers a blend of enjoyable and consistent exercise activities that involve their little ones, helping to reduce childcare expenses and fostering quality bonding time.

Whether it's Pilates, yoga, netball, or Zumba, there's an activity for everyone. Fitness isn't just beneficial for physical health; it also supports emotional well-being and serves as a fantastic icebreaker bring people together.



Some mothers are so entrenched in the pressures and demands on them that they cannot believe the magic that happens when they lift their feet off the ground.



# TREEHOUSE TEENS

**Treehouse Teens offers a unique vantage point—an intimate birds-eye view of self-discovery for teens who struggle through the system. Far from societal expectations, it becomes a space where teens process thoughts and emotions without judgment or stress.**

Teens gather three evenings a week, as well as during half terms and school holidays, in a safe and friendly environment. Here, they connect with peers who share similar experiences and engage in a range of lively and creative group activities designed to nurture their existing interests and explore new ones, especially outdoors and help them with emotional regulation, self-awareness and relationship skills with targeted DBT informed group approach.

Though based in Hackney, an inner city, in our Treehouse, it feels as though we are remote in a rural setting. The rush of cars below the window seems distant, pressures fade away, climate change feels within our control, and opportunities abound wherever we look.



Half-term and holiday sessions are solely nature-based. Some people call it adventure therapy, but we simply call it the great outdoors—casual hiking, scavenger hunts, beach trips, stand-up paddleboarding, rafting, fishing, orienteering, pewter and nature crafting, and park clean-ups



# FLYING COLORS

Flying Colors Art Depot creates a safe space where art becomes an integral part of children`s lives, particularly for those facing multi-barriers. We believe all youth are curious, imaginative, creative, innovative. We used mixed modality Art as a tool to help troubled primary school aged children emerge from feeling stuck and confined to experiencing a landscape of opportunities and successes with an element of art therapy.

I excelled in algebra and devoured my sister's college textbooks long before my classmates tackled their GCSEs. I was prepared to face my A-levels early, thanks to my intellectual prowess. Yet, amidst these academic achievements, there was one subject that completely confounded me: relationships. Emotions and social cues became a puzzle I couldn't solve, leaving me feeling lost and isolated. It was bewildering—I felt like everyone else had a manual for navigating relationships, while I stumbled in the dark.

I'm an academic not artistic kid, but the school therapist urged me to try Flying Colors Art Depot. At first i felt like an imposter, I don't do sticky, glitzy, colorful - I found myself experimenting with artistic styles that meant nothing to anyone but took the stress out of me. I also enjoyed DBT principals we chatted about and made my best friends there





# EQUALITY STATEMENT

Young and Inspired is dedicated to providing every child with an equitable, healthier, and happier start to life. We believe in challenging our own equality measures to ensure that our services meet the diverse needs of our community. As a BAME-led charity specializing in Charedi Jewish needs, we recognize the importance of filling gaps in service provision for our community. We understand that separate gender, multilingual options, special dietary provisions, and other methods are not exclusive benefits to the Jewish community and could greatly benefit others who are excluded from mainstream services. We have expanded our service user profile and actively strive to make our services accessible to other people on the fringes of communities who share our needs. We also make concerted efforts to reach children and families who may not be known to other services or who have historically been isolated.

Our “Fitting In and Standing Out” campaign has been a tremendous success, emphasizing the value of diversity and inclusion within our organization. Significant progress has been made in enhancing diversity within our staff team and board, particularly in terms of gender and background diversity.

# SUSTAINABILITY

sustainability remains a top priority for us. We commissioned a carbon footprint survey and are pleased with the encouraging results, positioning us ahead of many others in terms of energy efficiency. While we continue to seek further reductions in our carbon footprint, we remain mindful of the broader implications.

Furthermore, our SuperEats project has experienced remarkable growth, rescuing over 40 tonnes of food this year. Through partnerships with restaurants, we have significantly reduced waste, with one restaurant alone filling eight fewer garbage bags annually. We are immensely proud of our young Earth Ambassadors, who successfully launched a pilot program for our Wear and Share initiative. This program collects gently used items such as school cases and sports gear, prepares them, and redistributes them within our community. Not only does this program reduce waste, but it also fosters a sense of belonging and generosity among our members.

# REPORT OF THE TRUSTEES FOR THE YEAR ENDED 31 JANUARY 2024

The trustees who are also directors of the charity for the purposes of the Companies Act 2006, present their report with the financial statements of the charity for the year ended 31 January 2024. The trustees have adopted the provisions of Accounting and Reporting by Charities: Statement of Recommended Practice applicable to charities preparing their accounts in accordance with the Financial Reporting Standard applicable in the UK and Republic of Ireland (FRS 102) (effective 1 January 2019).

## OBJECTIVES AND ACTIVITIES

### Objectives and aims

The main objectives of the charity is that of:

- 1) the promotion and advancement of the education of young people
- 2) to provide or assist in the provision of facilities in the interests of social welfare for recreation or other leisure time occupation of individuals who have need of such facilities by reason of their youth, age, infirmity or disability, financial hardship or social circumstances with the object of improving their conditions of life
- 3) the promotion of any other exclusively charitable objects and purposes such as the trustees see fit, provided that they are regarded as charitable by the law of England and Wales.

### Significant activities

The financial results of the Company's activities for the period ended 31 January 2024 are fully reflected in the attached financial statements together with the notes thereon.

The trustees are satisfied with the results and activities of the company for the period and do not anticipate any significant changes in the forthcoming year.

### Public benefit

The trustees have referred to the guidance contained in the Charity Commission's general guidance on public benefit when reviewing the aims and objectives and in planning the charity's future activities. The aims of the charity for the public benefit are detailed in the Objectives and Activities section of the report.

## ACHIEVEMENT AND PERFORMANCE

### Charitable activities

The charity received donations that amounted to £394,117 (2023: £608,842) and spent £538,342 (2023: £516,363) on charitable activities.

Restricted funds were spent on specific projects including Treehouse Teens, Flying Colours Arts Hub, SuperEats, Sunshine Breakfast Club and Water Warriors.

## FINANCIAL REVIEW

### Reserves policy

The trustees have agreed that the charity will maintain reserves equivalent to at least 3 months of core running costs. This level of reserves is intended to provide financial stability, ensuring that the charity can continue its essential operations in the event of unexpected funding shortfalls or unforeseen expenses. The reserves policy is reviewed annually to ensure it remains appropriate for the charity's needs and circumstances.

## FUTURE PLANS

The charity plans to continue its activities subject to satisfactory incoming resources.

## STRUCTURE, GOVERNANCE AND MANAGEMENT

### Governing document

The charity is controlled by its governing document, its memorandum and articles of association, and constitutes a limited company, limited by guarantee, as defined by the Companies Act 2006.

### Recruitment and appointment of new trustees

It is not currently the intention of the trustees of the charity to appoint new trustees. Should this situation change in the future, the trustees will apply suitable recruitment and training procedures.

The trustees have a duty to identify and review the risks to which the charity is exposed and to ensure appropriate controls are in place to provide reasonable assurance against fraud and error.

# INDEPENDENT EXAMINER'S REPORT TO THE TRUSTEES OF YOUNG & INSPIRED

## Independent examiner's report to the trustees of Young & Inspired ('the Company')

I report to the charity trustees on my examination of the accounts of the Company for the year ended 31 January 2024.

### Responsibilities and basis of report

As the charity's trustees of the Company (and also its directors for the purposes of company law) you are responsible for the preparation of the accounts in accordance with the requirements of the Companies Act 2006 ('the 2006 Act').

Having satisfied myself that the accounts of the Company are not required to be audited under Part 16 of the 2006 Act and are eligible for independent examination, I report in respect of my examination of your charity's accounts as carried out under Section 145 of the Charities Act 2011 ('the 2011 Act'). In carrying out my examination I have followed the Directions given by the Charity Commission under Section 145(5) (b) of the 2011 Act.

### Independent examiner's statement

Since your charity's gross income exceeded £250,000 your examiner must be a member of a listed body. I can confirm that I am qualified to undertake the examination because I am a member of the Institute of Chartered Accountants in England and Wales, which is one of the listed bodies.

I have completed my examination. I confirm that no matters have come to my attention in connection with the examination giving me cause to believe:

- 1. accounting records were not kept in respect of the Company as required by Section 386 of the 2006 Act; or
- 2. the accounts do not accord with those records; or
- 3. the accounts do not comply with the accounting requirements of Section 396 of the 2006 Act other than any requirement that the accounts give a true and fair view which is not a matter considered as part of an independent examination; or
- 4. the accounts have not been prepared in accordance with the methods and principles of the Statement of Recommended Practice for accounting and reporting by charities (applicable to charities preparing their accounts in accordance with the Financial Reporting Standard applicable in the UK and Republic of Ireland (FRS 102)).

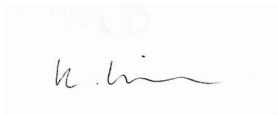
I have no concerns and have come across no other matters in connection with the examination to which attention should be drawn in this report in order to enable a proper understanding of the accounts to be reached.

Malcolm Venitt, A.C.A  
The Institute of Chartered Accountants in England and Wales  
  
Venitt and Greaves  
Chartered Accountants  
115 Craven Park Road  
South Tottenham  
London  
N15 6BL  
23 May 2024

# STATEMENT OF FINANCIAL ACTIVITIES FOR THE YEAR ENDED 31 JANUARY 2024

		31.1.2024		31.1.2023	
Notes		Unrestricted fund £	Restricted fund £	Total funds £	Total funds £
<b>INCOME AND ENDOWMENTS FROM</b>					
	Donations and legacies	161,283	232,834	394,117	608,842
2	Investment income	29	-	29	-
	<b>Total</b>	<b>161,312</b>	<b>232,834</b>	<b>394,146</b>	<b>608,842</b>
<b>EXPENDITURE ON</b>					
	<b>Charitable activities</b>				
	Charitable activities	317,293	221,049	538,342	516,363
	Other	900	-	900	-
	<b>Total</b>	<b>318,193</b>	<b>221,049</b>	<b>539,242</b>	<b>516,363</b>
	<b>NET INCOME/(EXPENDITURE)</b>	<b>(156,881)</b>	<b>11,785</b>	<b>(145,096)</b>	<b>92,479</b>
<b>RECONCILIATION OF FUNDS</b>					
	Total funds brought forward	168,188	-	168,188	75,709
	<b>TOTAL FUNDS CARRIED FORWARD</b>	<b>11,307</b>	<b>11,785</b>	<b>23,092</b>	<b>168,188</b>

Approved by the Trustees of Young & Inspired and signed on 30 Semptember 2024 on behalf of them all.

  
Kaily Chava Klein  
Chair of Trustees

The notes form part of these financial statements



BALANCE SHEET  
31.JANUARY.2024

		Unrestricted fund £	Restricted fund £	31.1.24 Total funds £	31.1.23 Total funds £
	Notes				
CURRENT ASSETS					
Cash at bank		12,207	11,785	23,992	168,188
CREDITORS					
Amounts falling due within one year	5	(900)	-	(900)	-
NET CURRENT ASSETS		11,307	11,785	23,092	168,188
TOTAL ASSETS LESS CURRENT LIABILITIES		11,307	11,785	23,092	168,188
NET ASSETS		11,307	11,785	23,092	168,188
FUNDS					
Unrestricted funds	6			11,307	168,188
Restricted funds				11,785	-
TOTAL FUNDS				23,092	168,188

The charitable company is entitled to exemption from audit under Section 477 of the Companies Act 2006 for the year ended 31 January 2024.

The members have not required the company to obtain an audit of its financial statements for the year ended 31 January 2024 in accordance with Section 476 of the Companies Act 2006.

1. The trustees acknowledge their responsibilities for ensuring that the charitable company keeps accounting records that comply with Sections 386 and 387 of the Companies Act 2006 and
2. preparing financial statements which give a true and fair view of the state of affairs of the charitable company as at the end of each financial year and of its surplus or deficit for each financial year in accordance with the requirements of Sections 394 and 395 and which otherwise comply with the requirements of the Companies Act 2006 relating to financial statements, so far as applicable to the charitable company.

These financial statements have been prepared in accordance with the provisions applicable to charitable companies subject to the small companies regime.

The financial statements were approved by the Board of Trustees and authorised for issue on 23 May 2024 and were signed on its behalf by:

S Adler - Trustee

NOTES TO THE FINANCIAL STATEMENTS  
FOR THE YEAR ENDED 31 JANUARY 2024

1. ACCOUNTING POLICIES

Basis of preparing the financial statements

The financial statements of the charitable company, which is a public benefit entity under FRS 102, have been prepared in accordance with the Charities SORP (FRS 102) 'Accounting and Reporting by Charities: Statement of Recommended Practice applicable to charities preparing their accounts in accordance with the Financial Reporting Standard applicable in the UK and Republic of Ireland (FRS 102) (effective 1 January 2019)', Financial Reporting Standard 102 'The Financial Reporting Standard applicable in the UK and Republic of Ireland' and the Companies Act 2006. The financial statements have been prepared under the historical cost convention.

INCOME

All income is recognised in the Statement of Financial Activities once the charity has entitlement to the funds, it is probable that the income will be received and the amount can be measured reliably.

EXPENDITURE

Liabilities are recognised as expenditure as soon as there is a legal or constructive obligation committing the charity to that expenditure, it is probable that a transfer of economic benefits will be required in settlement and the amount of the obligation can be measured reliably. Expenditure is accounted for on an accruals basis and has been classified under headings that aggregate all cost related to the category. Where costs cannot be directly attributed to particular headings they have been allocated to activities on a basis consistent with the use of resources.

TAXATION

The charity is exempt from corporation tax on its charitable activities.

FUND ACCOUNTING

Unrestricted funds can be used in accordance with the charitable objectives at the discretion of the trustees.

Restricted funds can only be used for particular restricted purposes within the objects of the charity. Restrictions arise when specified by the donor or when funds are raised for particular restricted purposes.

Further explanation of the nature and purpose of each fund is included in the notes to the financial statements.

2. INVESTMENT INCOME

	31.1.24 £	31.1.23 £
Deposit account interest	29	-

3. TRUSTEES' REMUNERATION AND BENEFITS

There were no trustees' remuneration or other benefits for the year ended 31 January 2024 nor for the year ended 31 January 2023.

Trustees' expenses

There were no trustees' expenses paid for the year ended 31 January 2024 nor for the year ended 31 January 2023.

# NOTES TO THE FINANCIAL STATEMENTS FOR THE YEAR ENDED 31 JANUARY 2024

## 4. COMPARATIVES FOR THE STATEMENT OF FINANCIAL ACTIVITIES

	Unrestricted fund £	Restricted fund £	Total funds £
<b>INCOME AND ENDOWMENTS FROM</b>			
Donations and legacies	608,842		608,842
<b>EXPENDITURE ON</b>			
Charitable activities	516,363		516,363
<b>NET INCOME</b>	92,479		92,479
<b>RECONCILIATION OF FUNDS</b>			
Total funds brought forward	75,709		75,709
<b>TOTAL FUNDS CARRIED FORWARD</b>	168,188		168,188

## 5. CREDITORS: AMOUNTS FALLING DUE WITHIN ONE YEAR

	31.1.24 £	31.1.23 £
Accrued expenses	900	-

## 6. MOVEMENT IN FUNDS

	At 1.2.23 £	Net movement in funds £	At 31.1.24 £
<b>Unrestricted funds</b>	168,188	(156,881)	11,307
General fund			
<b>Restricted funds</b>	-	11,785	11,785
Restricted funds			
<b>TOTAL FUNDS</b>	168,188	(145,096)	23,092

Net movement in funds, included in the above are as follows:

	Incoming resources £	Resources expended £	Movement in funds £
<b>Unrestricted funds</b>	161,312	(318,193)	(156,881)
General fund			
<b>Restricted funds</b>	232,834	(221,049)	11,785
Restricted funds			
<b>TOTAL FUNDS</b>	394,146	(539,242)	(145,096)

## Comparatives for movement in funds

	At 1.2.22 £	Net movement in funds £	At 31.1.23 £
<b>Unrestricted funds</b>	75,709	92,479	168,188
General fund			
<b>TOTAL FUNDS</b>	75,709	92,479	168,188

Comparative net movement in funds, included in the above are as follows:

	Incoming resources £	Resources expended £	Movement in funds £
<b>Unrestricted funds</b>	608,842	(516,363)	92,479
General fund			
<b>TOTAL FUNDS</b>	608,842	(516,363)	92,479

A current year 12 months and prior year 12 months combined position is as follows:

	At 1.2.22 £	Net movements in funds £	At 31.1.24 £
<b>Unrestricted funds</b>	75,709	(64,402)	11,307
General fund			
<b>Restricted funds</b>	-	11,785	11,785
Restricted funds			
<b>TOTAL FUNDS</b>	75,709	(52,617)	23,092

A current year 12 months and prior year 12 months combined net movement in funds, included in the above are as follows:

	Incoming resources £	Resources expended £	Movement in funds £
<b>Unrestricted funds</b>	770,154	(834,556)	(64,402)
General fund			
<b>Restricted funds</b>	232,834	(221,049)	11,785
Restricted funds			
<b>TOTAL FUNDS</b>	1,002,988	(1,055,605)	(52,617)

## 7. RELATED PARTY DISCLOSURES

There were no related party transactions for the year ended 31 January 2024.



# DETAILED STATEMENT OF FINANCIAL ACTIVITIES FOR THE YEAR ENDED 31 JANUARY 2024

	31.1.24 £	31.1.23 £
<b>INCOME AND ENDOWMENTS</b>		
<b>Donations and legacies</b>		
Donations	-	275,114
Gift aid	4,329	7,569
Grants	389,788	326,159
	394,117	608,842
<b>Investment income</b>		
Deposit account interest	29	-
<b>Total incoming resources</b>	394,146	608,842
<b>EXPENDITURE</b>		
<b>Charitable activities</b>		
Art haven	11,927	-
Breeze	3,690	17,750
Conquer the kitchen	34,350	56,260
Drama makes me calmer	91,393	71,521
Flying colours	3,000	37,873
Platinum jubilee project	10,750	45,033
Skills building courses	32,000	33,515
Summer holiday scheme	-	27,250
Sunshine breakfast club	44,566	63,655
Super eats	65,665	62,512
Treehouse teens	109,617	52,211
Fundraising costs	5,784	3,550
Advertising and publicity	240	390
Insurance		817
Legal and professional fees	1,226	1,532
Wages	31,990	33,144
Office expenses	17,994	6,017
Telephone	-	86
Training	3,000	1,317
IT and website expenses	86	1,803
Move it! Mom	7,453	-
Savvy and successful	23,309	-
Swim fit	13,650	-
Utilities	7,340	-
Water warriors	19,181	-
	538,211	516,236

	31.1.24 £	31.1.23 £
<b>Support costs</b>		
<b>Finance</b>		
Bank charges	131	127
<b>Finance</b>		
<b>Governance costs</b>		
Accountancy and legal fees	900	
<b>Total resources expended</b>	539,242	516,363
<b>Net (expenditure)/income</b>	<b>(145,096)</b>	<b>(92,479)</b>

# REFERENCE AND ADMINISTRATIVE DETAILS

## **Registered Charity Name**

**Young & Inspired**

## **Charity registration number**

**1145639**

## **Company registration number**

**7493381**

## **Principal office and registered address**

**26 Clapton Common  
E5 9BA  
London**

## **The trustees**

**Kaila Chava Klein**

**Yoel Fisher**

**Sara Adler**

