



Shepreth Wildlife Conservation Charity

Report and Unaudited Accounts

For the year ended

31st March 2022

Shepreth Wildlife Conservation Charity
Registered charity number 1145477

Shepreth Wildlife Conservation Charity

Reports and Accounts

Contents

Trustees Report	1 – 12
Statement of Trustees responsibilities	13
Independent Examiner's Report	14 - 15
Statement of Financial Activities	16
Balance Sheet	17
Notes to the Accounts	18 - 21

Shepreth Wildlife Conservation Charity

Charity Information

Trustees

Rebecca Willers	(Chairperson)
Sally Willers	(Secretary)
Colin Taylor	(Treasurer)
Jane Taylor	
Jeanette Richards	
Mike Hunter	
Liz Dams	
Yvonne Morrin	
Liz Bennett	
Hannah Lintott	(appointed 30.07.21)

Independent Accountants

Taylor & Co.
Chartered Certified Accountants
The Sycamores
43 Kneesworth Street
Royston
Herts
SG8 5AB

Business address and contact details

c/o. Shepreth Wildlife Park
Station Road
Shepreth
Royston
Herts
SG8 6PZ

Email: swcc@sheprethwildlifepark.co.uk

Registered Charity Number

1145477

Bankers

Lloyds TSB
The Cross
2 Melbourn Street
Royston
Herts
SG8 9AB

Governing Document

Constitution



SWCC Annual Report 2021 / 2022

Report of the Trustees

During the tenth year (2021/2022) of operation the Charity, Trustees and volunteers have undertaken work falling within the following categories:

1. Raising funds through various means to donate to other charities whose aims are consistent with the Charity's own, but have the local presence and expertise to achieve the Charity's objectives.
2. Management of the SWCC Hedgehog Hospital.
3. Events successfully executed: Santa's Grotto, Elephant Day, Anniversary Raffle, Yoga Fridays.
4. Recruitment and training of staff and volunteers to manage the hedgehog programme.
5. Raising funds for the ongoing costs and repayment of loan for the SWCC Hedgehog Hospital.
6. Educating the general public about conservation projects supported by SWCC and the work of the SWCC Hedgehog Hospital

Achievements and Performance

1. The Board of Trustees

The Charity has continued to raise funds for a variety of conservation causes in line with its aims and objectives.

2. Donations

The Charity raised and made donations to:

- Red Panda Network (£217)
- EAZA Ukraine Zoos Fund (£500)
- Shepreth Wildlife Park: Conservation & Education Department (£5,000)
- Transfrontier Africa (£796)
- Elephant Care unchained (£1,000)
- Fuze Ecoteer (Elephant MEME Coaster) (£940.57)

3. SWCC Hedgehog Hospital

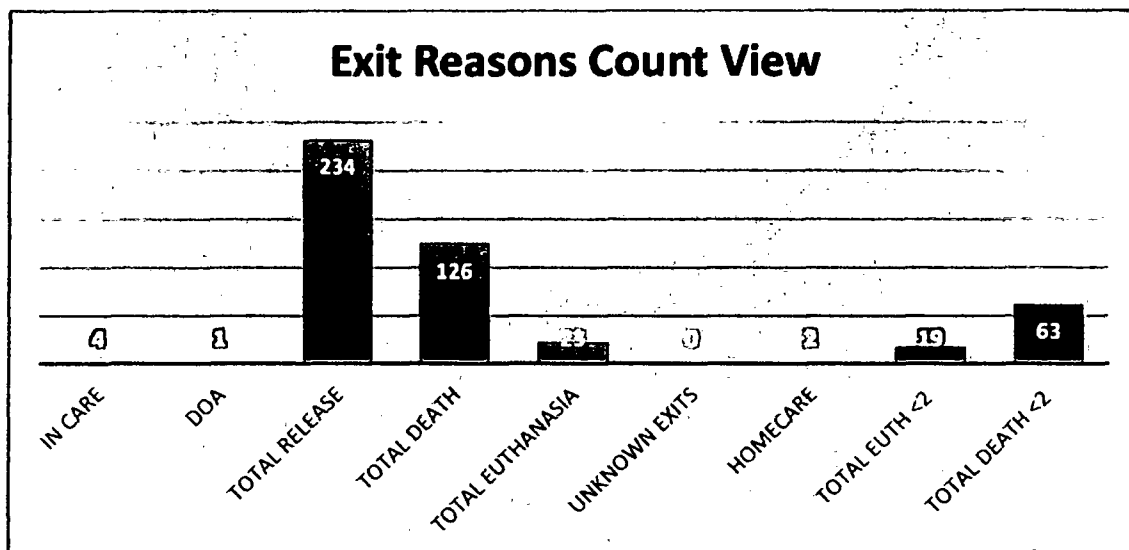
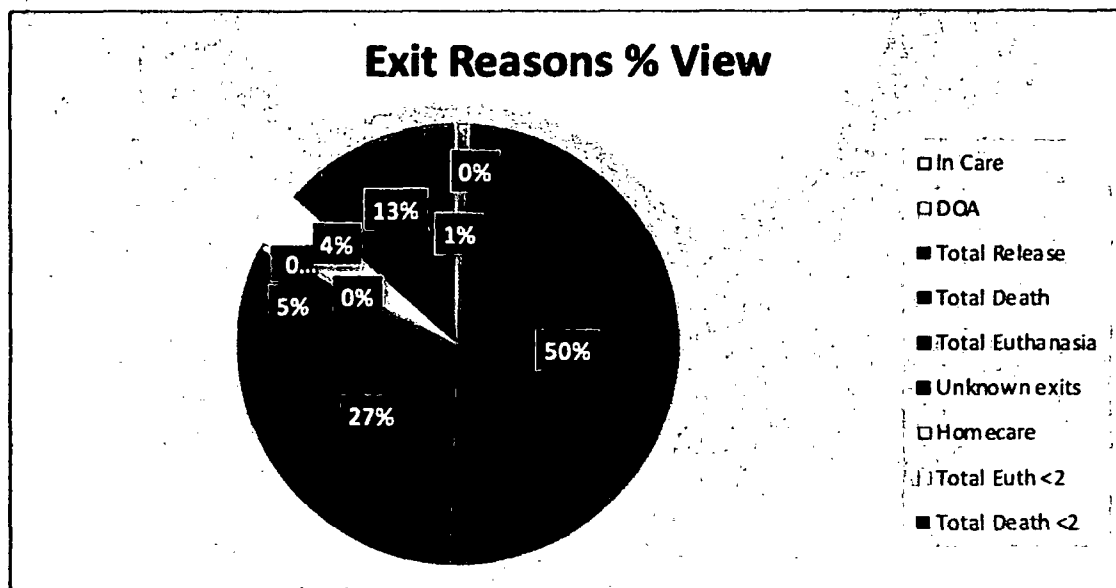
The Charity continues to make monthly repayments to reduce its ten-year loan. It also raises the funds required to keep the Hedgehog Hospital running efficiently. In the period 2021/2022 the hospital admitted 472 hedgehogs. We are proud to report the following data despite the disruption caused during the Covid pandemic. The success of this reporting period is credit to the staffing team and volunteers who continued to work hard during this time to ensure that high standards of welfare were maintained throughout the year. We would like to acknowledge Natasha Ennew for collating this data and producing this report on behalf of SWCC.



SWCC Hedgehog Hospital Data

Reporting Period 01.04.21 – 31.03.22

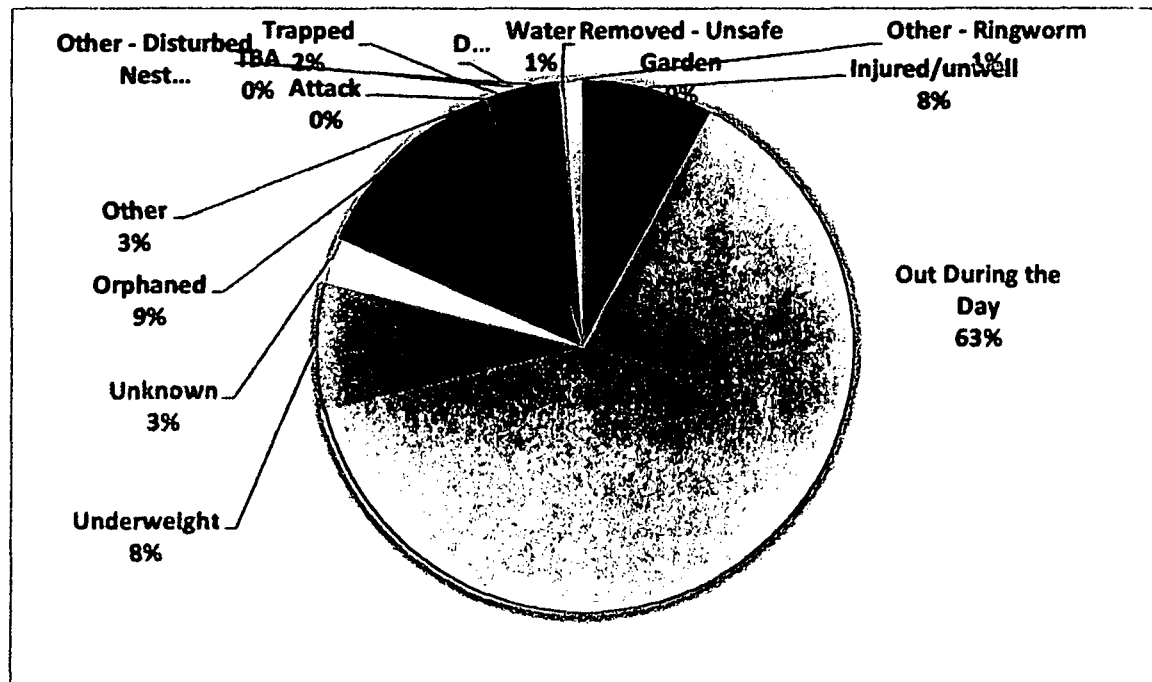
Current Position on 1st June 2022



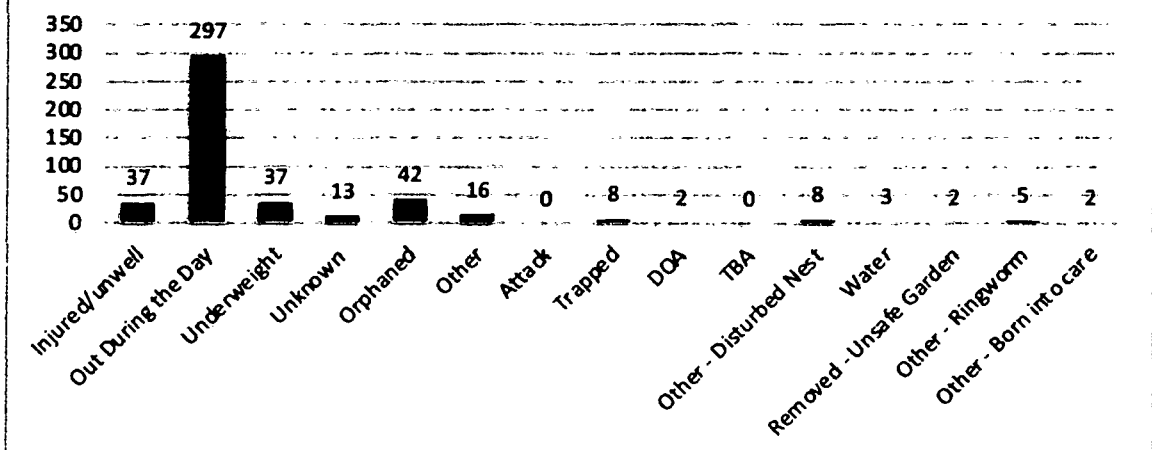
Release percentage has achieved 50% which easily exceeds the expected study outcome from Molony et al (2007) that concluded that only 30 to 40% of wildlife casualties are successfully released back into the wild.

There are no unknown exits this year. Accurate record keeping is instrumental in achieving this admission count picture, the Hospital Team have ensured that files are completed, and we can audit the Hedgehog journey to their destination. Only six hedgehogs remain in care from this reporting period; this report reflects a true picture. Euthanasia's are higher this year due to changes in protocols, this ensures that no hedgehogs are placed in secure gardens inhibiting their natural instincts.

Admission Release % View



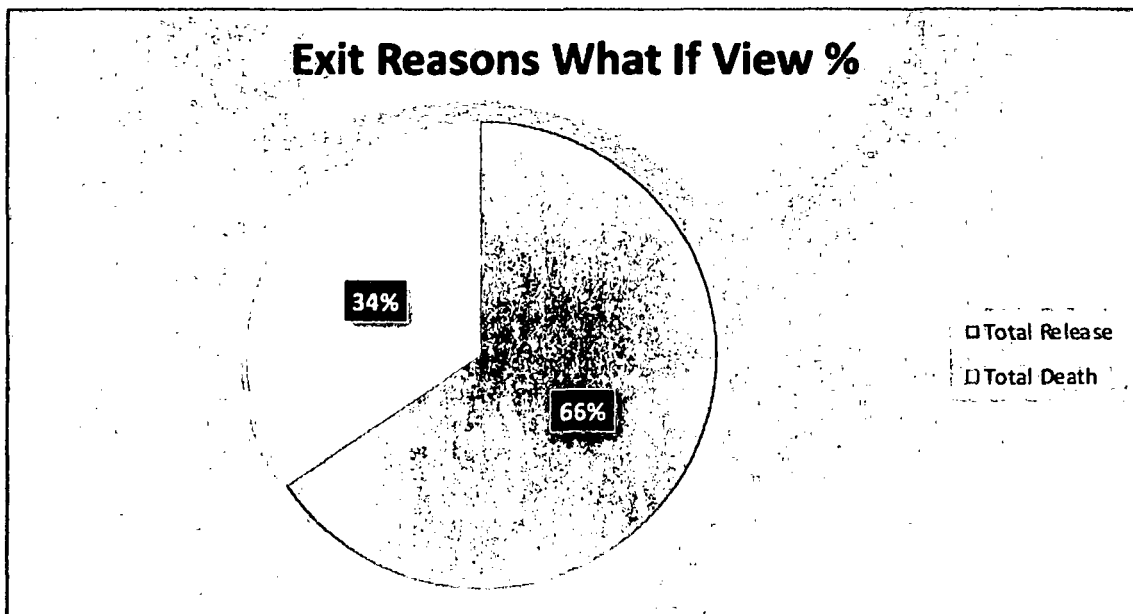
Admission Reasons Count View



'Out during the day,' like previous reporting years, is the main reason why hedgehogs are admitted to our care. We will be looking to introduce a 'final diagnosis' field to our files to see if we can analyse the real reason they were admitted. For instance, a hedgehog found out during the day may, under further examination, be injured which is not initially visible and this would alter their admittance reason. New admission reasons have been added this year which breakdowns the 'other' category that has been reported with higher figures in previous years. This year we have no unknown reasons which is scrupulous diligence by the Hospital Team.

What If?

If we deduct the hedgehogs that we were never in a position to save, like euthanasia's, dead on arrival and those that pass within 48 hours of admittance (deemed unsavable as they are already in critical decline) and the hedgehogs currently recorded as 'Homecare' and 'In Care' are released; the total release percentage will increase from 50% to 66%.



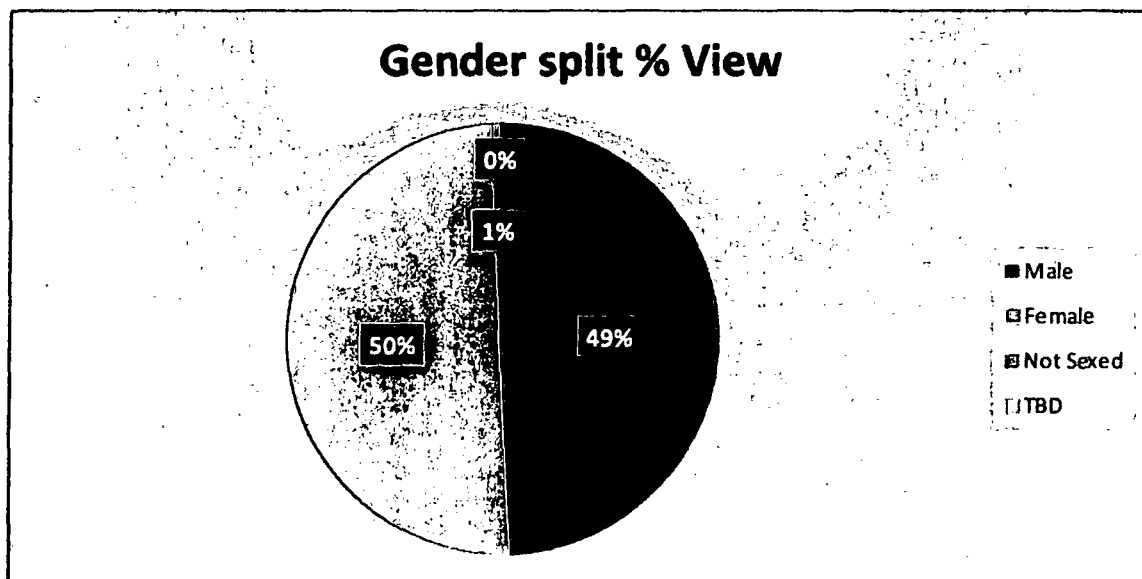
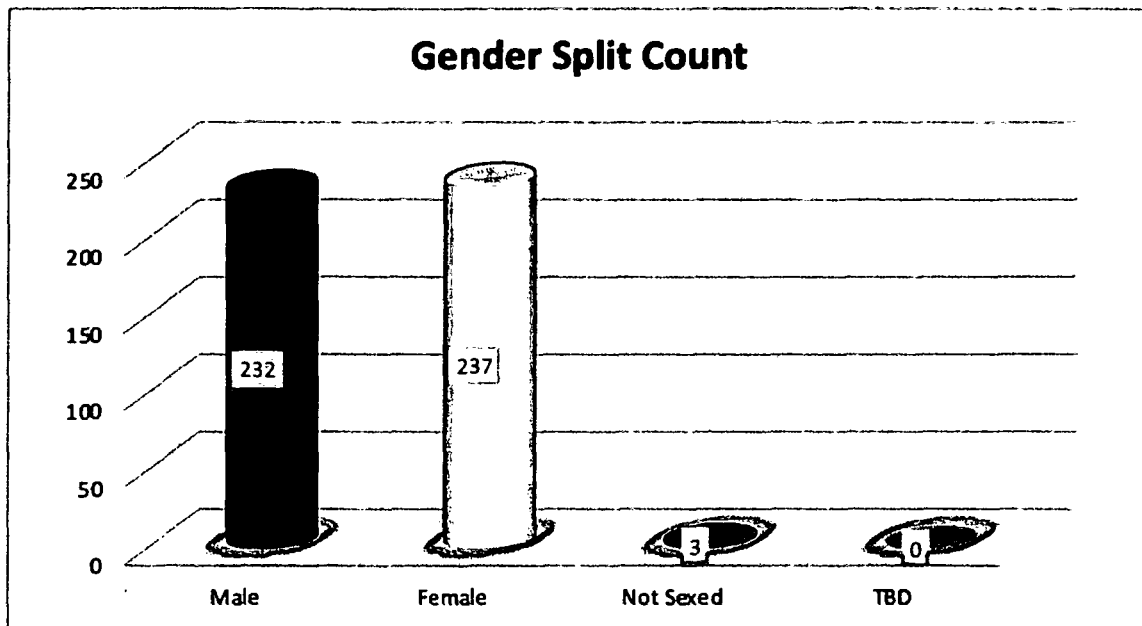
The un-saveables

The totals below show the numbers of hedgehogs that have either passed within 48 hours of arrival, were euthanised, or deceased upon arrival.

Death <2	63
Euthanasia <2	19
DOA	2
Total	84

In conjunction with the Hospital Manager and veterinary support team, we will be reviewing the 'Deaths under 48 hours' to see if we can alter care plans to reduce this occurrence.

Gender Split Information



As with previous reporting periods, we have again almost a 50 /50 split on sexes. Only three hedgehogs remined gender unidentified, which is thanks to meticulous reporting from the Hospital team.

% Survival Information by Recorded Admittance Body Score

This view is purely based on the recorded admittance body score that is captured upon arrival. The table below shows the release count and % of survival depending on this category only. This view does not consider the reason for admittance.

Count Total of all by BCS	BCS Recorded	Death	Euthan	DOA	Release	Survival %
14	1	11	1	0	2	14%
134	2	78	15	1	40	30%
192	3	63	15	0	114	59%
28	4	2	3	0	23	82%
3	5	0	1	0	2	67%

This summarises that hedgehogs with a body condition score of 2 and below have a low percentage of survival. Hedgehogs with a body score of 2 and under will have trouble maintaining their core body temperatures and will be fluid deficient. It is essential they are stabilised before treatment. With investment of further incubators and improved fluid maintenance administration, it is felt more hedgehogs of a body condition score of 2 could be stabilised for further treatment, and the survival percentage would increase. This will be further analysed in conjunction with the Hospital Manager; also including antibiotic intervention and the use of probiotics.

Hedgehogs with a body score of 1 will be suffering from organ shutdown and will require fluid drips along with incubation and oxygen support; for any chance of survival. It is felt the hedgehogs released were mis-recorded and were a body score 2. This prognosis of body score 1 hedgehogs will be a discussion point at the next Ethical Review meeting. The right decision may be to arrange for euthanasia, under veterinary instruction and care; for those identified as a true body condition score 1.

A review will also take place regarding hedgehogs and the use of intrafungal. It is assumed this reduces the time hedgehogs are in our care. This view can then be presented to the veterinary advisors with supporting data evidence; for a potential agreement to change a treatment protocol.

Death View Split by Body Condition Score and Admittance Reason

Death Totals	Injured		ODD		UDW		Urchin		Other		Unknown		Trapped		DOA	
11	1	1	1	7	1	3	1	0	1	0	1	0	1	0	1	0
78	2	1	2	61	2	5	2	3	2	2	2	4	2	1	2	1
63	3	2	3	45	3	2	3	14	3	0	3	0	3	0	3	0
2	4	1	4	1	4	0	4	0	4	0	4	0	4	0	4	0
0	5	0	5	0	5	0	5	0	5	0	5	0	5	0	5	0

By breaking the BCS totals for death (excluding euthanasia) a step further, and considering the admittance category, shows:

Hedgehogs that are 'Out During the Day' (ODD), for BCS 2-3 are less likely to survive. This is a similar pattern for previous years. From this view, standard treatment plans upon admission may improve the chance of survival i.e., always give a certain % deficit of s/c fluids suitable to the BCS. Investment in incubators may also increase survival rates by stabilising these patients. Heat pads alone do not distribute heat effectively or maintain a consistent temperature.

Exit Weight & Days in Hospital - Audit Information

Exit Weight	Year by Year Counts						
	15 to 16	16 to 17	17 to 18	18 to 19	19 to 20	20 to 21	21 to 22
>1000	38	126	271	176	25	8	32
>1200	7	52	149	44	6	0	1
>1300	1	29	90	25	0	0	0
>1400	0	16	46	10	0	0	0
>1500	0	2	25	4	0	0	0
>1600	0	1	6	1	0	0	1
>1700	0	0	2	0	0	0	0
>1800	0	0	2	0	0	0	0

*Exit weights have risen; however, this is still a vast improvement on years 2016 through to 2019.

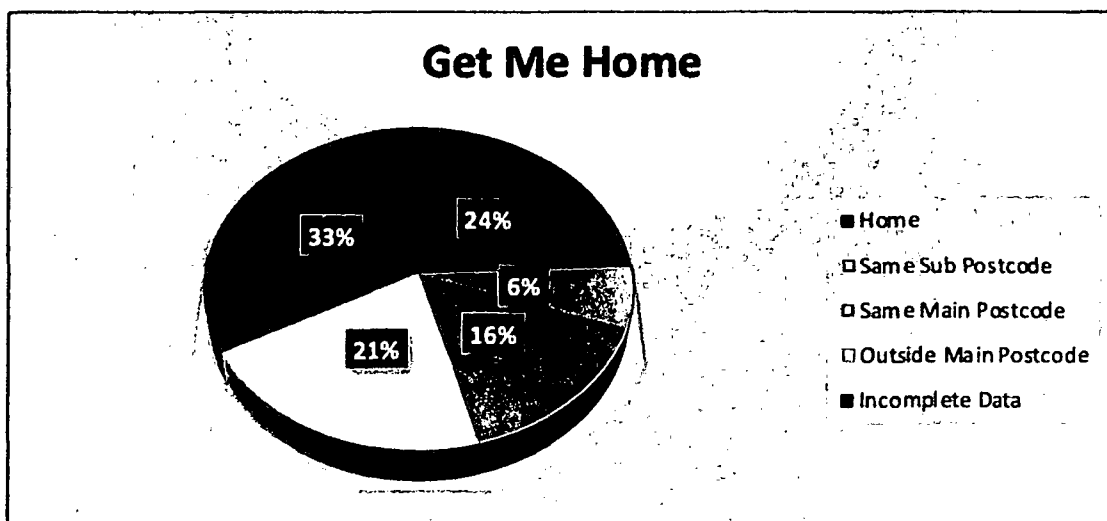
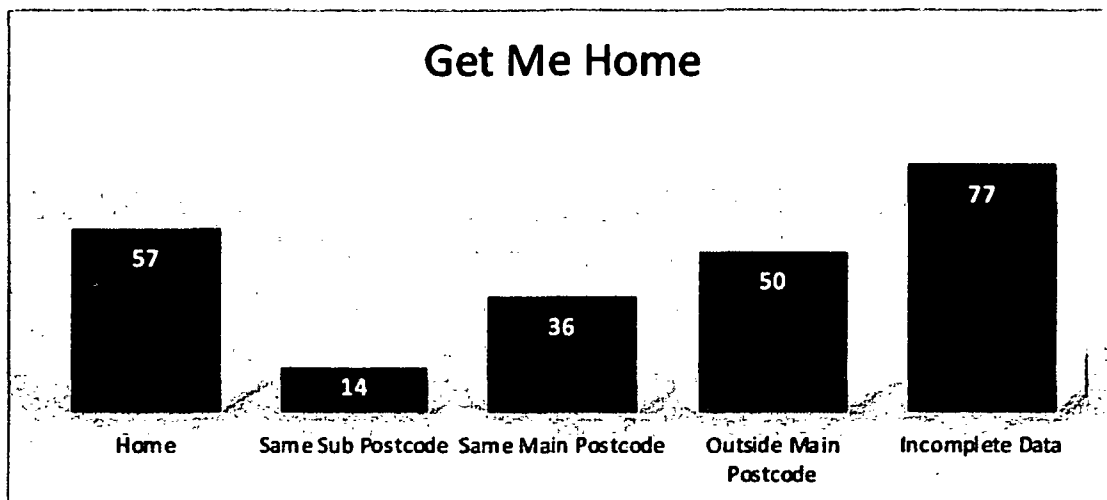
*Calculated on recorded exit weights for released hogs.

Days in Hospital	Year by Year Counts						
	15 to 16	16 to 17	17 to 18	18 to 19	19 to 20	20 to 21	21 to 22
>200	20	23	99	1	8	18	17
>250	9	7	29	0	5	3	3
>300	5	4	9	0	2	2	0
>350	5	2	4	0	2	0	0

*Days in care are a similar pattern to last year. This represents less than 0.05% of total hedgehogs. Hedgehogs have been released throughout the winter due to milder weather keeping this figure low.

*Calculated on days currently in care.

Release Site Data



Category	Code	Example
Home	1	Complete Post Code Match
Same Sub Postcode	2	i.e., CB21 to CB21
Same Main Postcode	3	i.e., CB to CB
Outside Main Postcode	4	i.e., CB to SG
Incomplete Data	5	unable to define

The British Hedgehog Preservation Society conclude that Hedgehogs build a mental map of their home range to help better navigate their environment. Hedgehogs released from unknown sites face larger competition for resources and a greater risk of road mortality. They may also spread infectious diseases to new populations. Simply release a hedgehog where they will be most content, within its original home range.

However, in reality, it is not always possible to release back home for several reasons:

- Hazards in that area caused original admittance
- Finder does not want the hedgehog to come back
- Release site not ready to support release and hedgehog is ready to go
- Infectious diseases in home area

The Hospital Team strive to get them back home as swiftly as possible, and for whatever reason where this is not possible, or suitable, the nearest location to the home site is used.

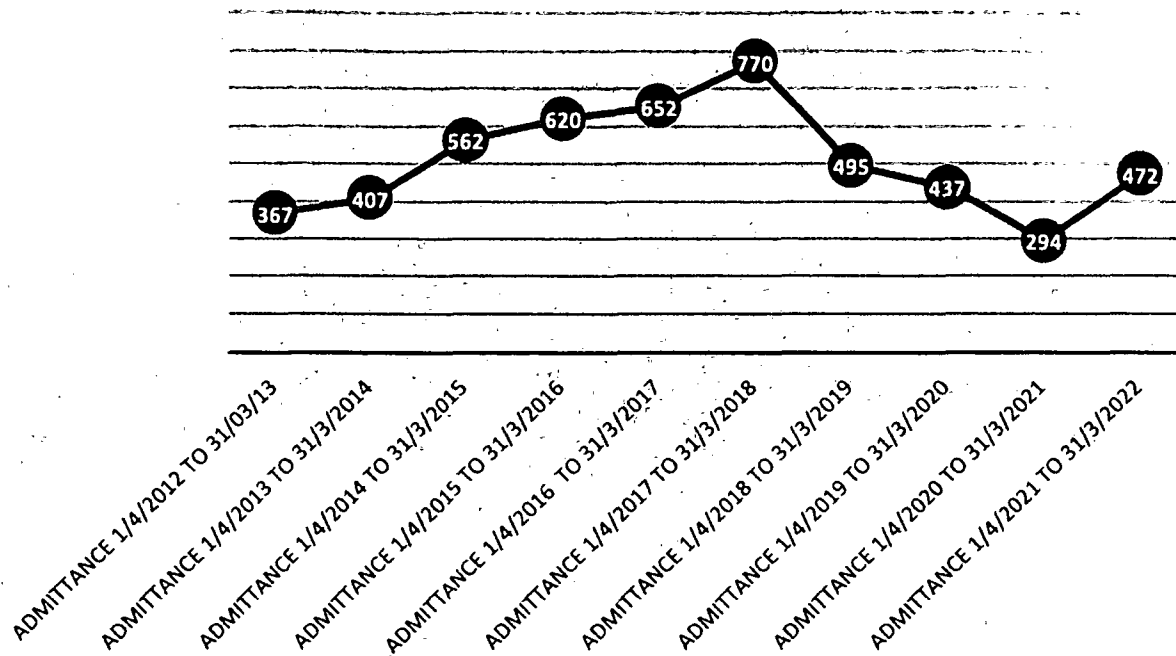
This view represents the release picture by Post Code view, unfortunately this does not show actual distance. For instance, a hedgehog released outside of the main postcode area CB1 to SG8 may only be a few miles away and is still suitable. We are looking at mapping software to better represent this view next year.

Data in this area is short for a variety of reasons:

- Hedgehogs admitted by vets cannot pass finders details (GDPR restrictions)
- Finders often dropping patient off for a friend or neighbour does not know where the hedgehog was found.
- Members of public withholding area found information
- Street or place name is recorded; post code is to be updated on paperwork

The Hospital Manager is focusing on this data for the next reporting period.

SWCC Hedgehog Hospital Summary Admission Totals



Total admissions since the SWCC Hedgehog Hospital opened: 5076

Report of the Trustees (continued)

3.1 Staffing

SWCC employs a Hospital Manager and two part-time Welfare Assistants. Volunteers are continually recruited and trained to maintain the hospital on a seven-day/week basis.

3.2 Release Programme

At the time of reporting, 234 hedgehogs were successfully released back to the wild.

3.3 Hedgehog Scientific Advisory Board (HSAB - Research)

The SWCC Hedgehog Hospital has continued to support student research projects by offering our data for desk studies.

3.4 Hedgehog Helpline

SWCC staff man a hedgehog helpline.

4. Website

The SWCC website (www.swccharity.org) continued to be updated in 2022.

5. Fundraising

5.1 Grants and funding

The committee continued to meet virtually to discuss grant applications and possible fundraising events. Regular fundraising event days took place during the year.

Grants and donations were applied and received from:

- Jack Patston Trust (£2,000)
- Trinity College, Cambridge (£1,000)
- Tropical Butterfly House, Wildlife and Falconry Centre (£690)
- Animal Defence Trust (£2,500)
- Zoological Society of Hertfordshire (£1,000)
- AXA Insurance (£2,000)

5.2 Hedgehog Ambulance

Buckingham & Stanley Group – MG and Subaru Cambridge, have continued to donate, tax and service the use of a vehicle to be used as an ambulance for collecting and releasing hedgehogs.

6. Media

The SWCC Hedgehog Hospital continued to receive good media coverage, and SWCC staff and volunteers maintain a successful social media presence.

7. Education

An educational section was added to the website: <http://www.swccharity.org>

8. Community

Community plays a large part of what we do, with training volunteers and students to help with the hedgehog programme and advising people on making gardens wildlife-friendly.

Report of the Trustees (Ends)

Shepreth Wildlife Conservation Charity

Report of the Trustees (continued)

Financial Review

The financial accounts are set out on pages 16 – 21. The financial statement has been prepared implementing the Statement of Recommended Practice for Accounting and Reporting by Charities issued by the Charity Commission for England and Wales (effecting April 2005) and in accordance with the Financial Reporting Standard for Smaller Entities (effective January 2005).

During the period the principal sources of funding were fundraising and donations.

The Statement of Financial Activities shows net expenditure of £10,821 which deducted from reserves brought forward of £68,224 make total reserves of £57,403 at the year end. The Restricted funds total £22,993 (Hedgehogs Nil, Red Pandas £644, Elephants Nil, Research £1,535 and Shepreth Wildlife Park £20,814) which leaves free reserves of £34,410.

The Trustees are satisfied that these reserves are sufficient at the present time.

Plans for future years

The Charity expects to increase its fund-raising and obtain grants to pay for the hospitals running costs, employ staff and to allow it to continue to donate to other charities.

This report was approved by the board of Trustees on 29th June 2022.

Chair

Shepreth Wildlife Conservation Charity

Statement of Trustees Responsibilities

Charity Law requires the Trustees to prepare financial statements for each financial year which give a true and fair view of the state of affairs of the Charity as at the balance sheet date and of its incoming resources and application of resources, including Statement of Financial Activities, for the financial year. In preparing those financial statements, the management committee should follow best practice and:

- Select suitable accounting policies and then apply them consistently;
- Make judgements and estimates that are reasonable and prudent; and
- Prepare the financial statements on the going concern basis unless it is in appropriate to assume that the Charity will continue on that basis.

The Trustees are responsible for maintaining proper accounting records which disclose with reasonable accuracy at any time the financial position of the Charity. They are also responsible for safeguarding the assets of the Charity and hence for taking reasonable steps for the prevention and detection of fraud and other irregularities.

This report was approved by the Board of Trustees on 29th June 2022.

Chair

Shepreth Wildlife Conservation Charity

Independent Examiner's Report

Report of the Independent Examiner to the trustees on the Unaudited accounts of the charity for the year ended 31st March 2022

I report on the accounts of the company for the year ended 31st March 2022, which are set out on pages 16 to 21.

Respective responsibilities of trustees and examiner

The charity's trustees are responsible for the preparation of accounts. The charity's trustees consider that an audit is not required for this period under section 144 of the Charities Act 2011 (the Charities Act) and that an independent examination is needed. The charity's gross income did not exceed £500,000 although the charity's trustees have requested that an independent examiners report is undertaken. I am qualified to undertake the examination by being a qualified member of The Association of Chartered Certified Accountants.

Having satisfied myself that the charity is not subject to an audit under Charities Commission law and is eligible for independent examination, it is my responsibility to:

- examine the accounts under section 145 of the Charities Act;
- to follow the procedures laid down in the general directions given by the Charity Commission (under section 145(5)(b) of the Charities Act; and
- to state whether particular matters have come to my attention.

Basis of independent examiner's statement

My examination was conducted in accordance with general directions given by the Charity Commission. An examination includes a review of the accounting records kept by the charity and a comparison of the accounts presented with those records. It also includes consideration of any unusual items or disclosures in the accounts, and seeking explanations from the trustees concerning any such matters. The procedures undertaken do not provide all the evidence that would be required in an audit, and consequently no opinion is given as to whether the accounts present a 'true and fair' view and the report is limited to those matters set out in the statement below.

Shepreth Wildlife Conservation Charity

Independent Examiner's Report (continued)

Independent Examiner's statement

In connection with my examination, no matter has come to my attention:

1. which gives me reasonable cause to believe that, in any material respect, the requirements:
 - to keep accounting records in accordance with section 130 of the Charities Act;
 - to prepare accounts which accord with the accounting records and comply with the accounting requirements of the Charities Act have not been met; or
2. to which, in my opinion, attention should be drawn in order to enable a proper understanding of the accounts to be reached.

A.G. Winter FCCA

Taylor & Co.
Chartered Certified Accounts
The Sycamores
43 Kneesworth Street
Royston
Herts
SG8 5AB

Date: 29th June 2022

Statement of Financial Activities
Year Ended 31st March 2022

	Unrestricted	Restricted Funds	Restricted Funds	Restricted Funds	Restricted Funds	Restricted Funds	Restricted Funds	Restricted Funds	Total	Total
	Funds	Hedgehogs	Tigers	Red Panda	Elephants	Research	Funds Shepreth Wildlife Park	Ukraine Zoo	Funds 2022	Funds 2021
	£	£	£	£	£	£	£	£	£	£
Incoming Resources										
Donations	19,107.84	11,982.85	368.42	10.00	1,832.00				33,301.11	55,449.08
Fundraising	5,582.14	3,410.82	275.00	40.00				500.00	9,807.96	4,576.78
Grants		7,500.00							7,500.00	13,655.66
Covid Government Grants									-	10,000.00
Interest Received	2.33								2.33	2.98
	24,692.31	22,893.67	643.42	50.00	1,832.00	-	-	500.00	50,611.40	83,684.50
Asset and Investment Sales	-	-	-	-	-	-	-	-	-	-
Total Incoming Resources	24,692.31	22,893.67	643.42	50.00	1,832.00	-	-	500.00	50,611.40	83,684.50
Resources Expended										
Donations				217.33	2,738.82		5,000.00	500.00	8,454.15	6,892.82
Fundraising	1,218.75								1,218.75	20.00
Hospital supplies		2,744.08							2,744.08	1,756.18
Veterinary		9,491.13							9,491.13	5,003.52
Hospital equipment									-	565.54
Waste Disposal									-	1,943.97
Repairs and maintenance		328.08							328.08	222.04
Administration									-	
Staff wages		28,390.50							28,390.50	27,665.75
Staff pensions		373.82							373.82	-
Printing/Stationery/Advertising		188.00							188.00	214.80
Accountancy	756.00								756.00	624.00
Subscriptions	591.60								591.60	447.60
Bank Charges	65.00								65.00	-
Paypal Charges	290.36								290.36	-
Insurance		1,179.83							1,179.83	722.20
Electricity		2,381.80							2,381.80	1,554.26
Card Charges	22.80								22.80	-
Telephone		547.63							547.63	368.18
Ambulance Insurance	912.80								912.80	951.00
Loan Interest		36.00							36.00	82.00
Other Interest									-	1.07
Sundry Expenses		527.49							527.49	-
Depreciation									-	
Leasehold property		2,933.00							2,933.00	2,933.00
	3,857.31	49,121.36	-	217.33	2,738.82	-	5,000.00	500.00	61,432.82	51,968.03
Asset and Investment Purchases	-	-	-	-	-	-	-	-	-	-
Total Resources Expended	3,857.31	49,121.36	-	217.33	2,738.82	-	5,000.00	500.00	61,432.82	51,968.03
Net Income for the year	20,835.00	26,227.69	643.42	167.33	904.82	-	5,000.00	-	10,821.42	31,716.47
Transfers between funds	- 26,359.27	26,227.69		167.33	35.75				- 0.00	-
Total funds brought forward	39,934.47				940.57	1,535.55	25,813.75		68,224.34	38,507.87
Total funds carried forward	34,410.20	-	643.42	-	-	1,535.55	20,813.75	-	57,402.92	68,224.34

Balance Sheet as at 31st March 2022

Notes

		2022	2021
		£	£
Fixed Assets			
Tangible Assets	(3)	29,334	32,267
Current Assets			
Cash at Bank and in hand		29,133	44,233
Sundry Debtors		3,096	470
Creditors: Amounts due within one year	(4)	<u>(4160)</u>	<u>(5208)</u>
Net Current Assets		<u>28,069</u>	<u>39,495</u>
Total Assets less Current Liabilities		57,403	71,762
Creditors: Amounts due over one year	(5)	<u>0</u>	<u>(3538)</u>
Net Assets		<u><u>57,403</u></u>	<u><u>68,224</u></u>
Funds of the Charity			
Unrestricted funds		34,410	39,934
Restricted funds: Hedgehogs		-	-
Tigers		644	-
Red Panda		-	-
Elephants		-	941
Research		1,535	1,535
Shepreth Wildlife Park		<u>20,814</u>	<u>25,814</u>
Total Funds		<u><u>57,403</u></u>	<u><u>68,224</u></u>

Shepreth Wildlife Conservation Charity

Notes to the Accounts For the year ended 31st March 2022

1. Accounting policies Basis of preparation of accounts

The financial statements have been prepared in accordance with the Financial Reporting Standards for Smaller Entities (FRSSE), effective April 2008, and all other applicable standards, as modified by the Statement of Recommended Practice for Accounting and Reporting issued by the Charity Commissioners for England & Wales, effective October 2005. The accounts have been drawn up in accordance with the provisions of the Charities Act and the Companies Act.

The company has also taken advantage of the exemption in Financial Reporting Standard No. 1 from the requirement to produce a cash flow statement.

The Charity is entirely dependent on donations, fundraising and grants as a consequence the going concern basis is also dependent on the continuation of donations, fundraising and grants.

The particular accounting policies adopted are set out below.

Accounting convention

The financial statements are prepared, on a going concern basis, under the historical cost convention as modified by the revaluation of freehold land and buildings and fixed asset investments.

Incoming Resources

Incoming resources are accounted for on a receivable basis deferred as described below where appropriate. Grants are all included in voluntary income on the SOFA.

Recognition of liabilities

Liabilities are recognised on the accruals basis in accordance with normal accounting principles, modified where necessary in accordance with the guidance given in the Statement of Recommended Practice for Accounting and Reporting issued by the Charity Commissioners for England & Wales.

Shepreth Wildlife Conservation Charity

Notes to the Accounts For the year ended 31st March 2022 (Continued)

Resources Expended

As specified by SORP (2005), adopted during the year, resources expended includes all expenditure directly related to the objects of the charity and comprises the following:-

Costs of generating voluntary income

The cost of generating voluntary income comprises of an appropriate share of support costs associated with attracting and administering grants and donations received by the charity.

Fundraising Costs

Fundraising costs comprise of goods and services obtained specifically for fund raising activities and events, and an appropriate share of the support costs.

Governance Costs

Governance costs represent expenditure incurred in the general running of the charity and expenses incurred for compliance with charitable and statutory requirements, as well as an appropriate share of support costs.

Fixed assets and depreciation

Tangible fixed assets are stated at cost less depreciation.

Depreciation has been provided at the following rates in order to write off the assets (less their expected residual value) over their estimated useful economic lives.

A regular review of the likelihood of asset impairment is undertaken.

Fixtures, Fittings and Equipment	25% straight line
Leasehold Property	Over 20 years

Taxation

As a registered charity, it is exempt from income and corporation tax to the extent that its income and gains are applicable to charitable purposes only. Value Added Tax is not recoverable by the charity, and is therefore included in the relevant costs in the Statement of Financial Activities.

Shepreth Wildlife Conservation Charity

Notes to the Accounts For the year ended 31st March 2022 (Continued)

Funds structure policy

The charity maintains a general unrestricted fund which represents funds which are expendable at the discretion of the trustees in furtherance of the objects of the charity. Such funds may be held in order to finance both working capital and capital investment.

Restricted funds have been provided to the charity for particular purposes, and it is the policy of the board of trustees to carefully monitor the application of those funds in accordance with the restrictions placed upon them.

There is no formal policy on the allocation of funds to designated funds.

There is no formal policy of transfer between funds. Any proposed transfer between funds would be considered in the particular circumstances.

2. Winding up or dissolution of the charity

If upon winding up or dissolution of the charity there remains any assets the satisfaction of all debts and liabilities the assets represented by the reserves shall be transferred to some other charitable body or bodies having similar objects to the charity.

3. Tangible Fixed Assets

	Total	Leasehold Property	Fixtures & Fittings
Cost at 1 st April 2021	<u>61,970</u>	<u>58,664</u>	<u>3,306</u>
At 31 st March 2022	<u>61,970</u>	<u>58,664</u>	<u>3,306</u>
Depreciation at 1 st April 2021	29,703	26,397	3,306
Charge for the year	<u>2,933</u>	<u>2,933</u>	<u>Nil</u>
At 31 st March 2022	<u>32,636</u>	<u>29,330</u>	<u>3,306</u>
Net Book Value			
At 31 st March 2022	<u>29,334</u>	<u>29,334</u>	<u>Nil</u>
At 31 st March 2021	<u>32,267</u>	<u>32,267</u>	<u>Nil</u>

4. Creditors: Amounts falling due within one year

	2022 £	2021 £
Sundry Creditors/Accruals	706	708
Loan: M. Hunter	<u>3,454</u>	<u>4,500</u>
	<u>4,160</u>	<u>5,208</u>

Shepreth Wildlife Conservation Charity

**Notes to the Accounts
For the year ended 31st March 2022 (Continued)**

5. Creditors: Amounts falling due after one year

	2022	2021
Loan M. Hunter	<u>Nil</u>	<u>3,538</u>

M. Hunter is a trustee of the charity. The loan is repayable over 10 years with an annual interest rate set at the current Bank Rate, which is currently 0.50% but subject to change.

6. Leasing commitments

The charity has now negotiated a lease for 20 years with the Wildlife Park. The rent due per annum will be £100.

7. Staff numbers

The average number of employees during the period under review was 3 (2020-3).