

**THE METHODIST CHURCH
STANDARD FORM OF ACCOUNTS
ACCRUALS BASIS**

For the year ended 31 August 2022

**METHODIST CENTRAL HALL
WESTMINSTER**

Registered Charity No 1145076

SUPERINTENDENT MINISTER
Revd Tony Miles

CHURCH STEWARDS

Esther Buckman
Emmanuel Asante
Abdul Bah
Michael Davies
Regina Boye
Denzil Cummings-John
Comfort Golightly
Shirley Bernisto
Grace Kermah
Joseph Adjei
Sabrina Malcolm

CHURCH TREASURER

Ama Ackah-Yensu

METHODIST CENTRAL HALL WESTMINSTER CHURCH TRUSTEES' ANNUAL REPORT

Introduction

This Annual Report gives an account of the mission and ministry of Methodist Church Central Hall Westminster. It represents considerable commitment on the part of its members, who both gather for worship and learning, and disperse in witness, being involved in a variety of means of service.

Aims and Organisation

Our mission is to be a vital Christian presence in the heart of London. Our vision statement declared on the order of worship each week is: "Methodist Central Hall Westminster – a global Christian family following Jesus at the heart of London."

Review of the Year – Regrouping and Rebuilding

With the restrictions of the Covid Pandemic eventually being lifted, we have worked hard to gather our in-person congregation again and this has not been easy. Many have been nervous about travelling into London. There has been the added obstacle of an unprecedented number of events in Westminster (marathons, bike rides, and filming etc), and we have also been hindered by the Congestion Charge. Nevertheless, our community has gradually been regrouping. The challenge has been to rebuild a church that is relevant to a world transformed by a virus and other global issues. We have over 60% of our regular worshippers returning to worship on a Sunday morning, with Special services like Easter seeing larger numbers (80%). We are hugely grateful to the entire staff team and those who are lay volunteers, for their commitment, prayer, and faithfulness. At times, there have been few around to share the load, but it's good to see more people stepping up to help us rise to new opportunities. It has been wonderful to see our Vision Statement becoming a reality.

Midweek Lunchtime Services

These resumed last September and got off to a slow start, due to very few office workers being back. However, we have grown a new nucleus of our own members who attend, we have welcomed almost 30 visitors and tourists and are starting to see a few office workers occasionally. There was a good attendance at a special service for the Platinum Jubilee, attended by some from the Business Centre.

Confirmation and Reception Into Membership, Baptisms and 1st Anniversary Services

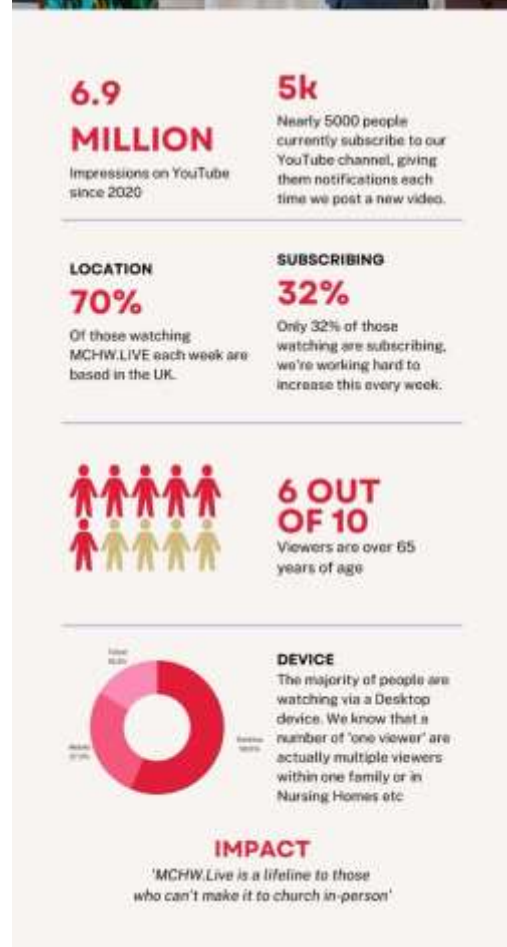
Despite the challenges above, we were delighted to Confirm 6 new Church Members and receive 5 more by way of transfer from other churches, with more transfers expected soon. It is encouraging that some new members are joining us because of our online



ministry. Due to our inability to hold special services during the pandemic, we have had a significant number of baptisms and first anniversary services to mark the death of loved ones.

Online Services and Meetings

Our live-streamed services continue to average 1.3K – 1.4K views each week. We are conscious that each view may represent multiple people as we know a lot of couples and families are viewing. We have overcome several technical challenges and we are still planning to raise funds to invest in new equipment for the Chapel and Great Hall. A church member has been trained and engaged as a freelance technician for our online services, enabling us to reduce costs.



Fun and Fellowship Weekend

Members of the ministerial team and **45 church members, aged between 5 and 90 years, went away to The Friars – Aylesford Priory, Kent for a weekend (June 10th-12th).** The theme was 'Wellbeing and the Kingdom of God' and was led by a former Deacon at MCHW. It was a time of great blessing and encouragement.

Healing Ministry

Healing Services are rebuilding and have been well-received. Our annual healing conference returned to the Great Hall this year, after the 2020 conference was cancelled and the 2021 conference went out on-line.

Attendees were down on pre-covid times, but we had c.180 on the day. The worship was inspirational and the key speaker, Carolyn Lawrence's talks were extremely well received, with many commenting positively on the day and in subsequent emails. The leaders and combined prayer teams from MCHW and Premier Lifeline were kept extremely busy, and we had queues of people waiting in the aisles for anointing and individual prayer

The theme '**Transformation:- from the inside out**' particularly resonated with the huge need for healing for minds and hearts after the two years of fear and stress from covid.



Sanctuary

Sanctuary is the young adult congregation at MCHW, and also a fresh expression of church trying to reach out to people in their 20s and 30s across London. It's a group of people following Jesus so they can experience life in all its fullness, and be a part of turning London upside down. They do this by exploring spirituality, justice, and leadership. There are about 30 people in the community. In the year 2021/22 Sanctuary has developed:

- A corporate rhythm of life for community members.
- An intentional discipleship tool based on monthly coaching conversations.
- Four justice groups, looking at how we can

make the world a better place by campaigning for financial justice, racial justice, climate justice, and helping the homeless. On 30th June, Sanctuary held a special leadership training evening for social entrepreneurs and charity leaders and church volunteers, called [Building A Dream Team](#).

Ecumenical Events

We continue to maintain good relations with Westminster Abbey, Westminster Cathedral, and other churches in Westminster. We work with and support The Passage (helping homeless people in Westminster). Moreover, despite MCHW reducing the grant to the St Vincent's Family Project (SVFP) that is hosted on our premises, the work of the project has continued with the help of income from other sources. Our Superintendent was invited to participate in a number of national events at the Abbey, including the Commonwealth Service and a Service of Thanksgiving for the life of His Royal Highness The Prince Philip, Duke of Edinburgh. He also preached at St. Margaret's Church at the 5th Anniversary of the terror attacks on Westminster Bridge and New Palace Yard. This service was well attended by the families of the victims and the Prime Minister.

Local Preaching

We now have 11 Local Preachers. nine Fully Accredited, one On Trial, and another On Note. During the year we had a new Church Member by transfer, who is also Fully Accredited. Our preachers take part in our own services as well as preaching in various London Circuits.

Vice President of Conference

We are very proud to report that our church member, **Anthony Boateng, was inducted as Vice President of Conference** on Saturday 25th June 2022. We give thanks to God and continue to support him with our prayers during a busy and demanding year for him.

Cultural Groups

The Cultural Fellowship groups are in good spirits and have been overseen by Revd Lansford Penn-Timothy. This has fostered togetherness and collaboration. Communication among members through WhatsApp and other forums has significantly

improved. Through these groups, we have been able to celebrate significant moments in their various cultures. There have been pockets of challenges here and there on the Food Policy but in general, it appears to be working well. A Farewell Service for Revd Dr Martyn Atkins, which had been delayed because of the Pandemic, was finally held on 8th May 2022. It was followed by a successful reception that gave the opportunity for the various groups to serve food in line with the Food Policy that was initiated whilst he was in office.

Visitor Services and Bookstall

With the assistance of Paul Moynihan (our part-time archivist) and Frank Waller, who leads the volunteers, our Visitor Services Centre and Bookstall have been restructured and limited tours resumed. We have hosted visitors from the USA, Korea, and others from across the world. We hosted 23 ministers from the Methodist Church overseas, who were in the UK for the Methodist Conference 2022.

All in all, the year has been challenging and yet rewarding – an opportunity for us to experience God's grace in a very special way.

Our Superintendent Minister closes with words from St. Paul, ***'Therefore encourage one another and build each other up, just as in fact you are doing.'***

(1 Thessalonians 5:11)

May God richly bless us all as we share in his mission and further the work of the kingdom.

Plans for 2022/23

Financial plans have been prepared on the basis that staff levels within the Church will remain the same. With the grant from the Conference Property Trustees forecast to remain at 50% of the 2019/20 (pre Covid-19) levels and a reduced level of giving due to the cost-of-living crisis, we are initially budgeting for a deficit of £136.9k in 2022/23, which will result in all free reserves and the Contingency being used. However the Church Trustees have sought and received assurances from the Conference Property Trustees of increased levels of grant, with the situation being kept under constant review.

The membership are also considering prayerfully how to increase their giving in order to move forward with the Kingdom Agenda. We continue to trust in God, who has faithfully brought us thus far!

Financial Review

With Covid-19 restrictions lifted during the year, church activities started to resume, but at a very slow pace. The grant from the Managing Trustees of the building was maintained at 50% of pre-pandemic levels. Coupled with the ending of support from the Government Furlough Scheme, we had budgeted for a deficit in 2021/22.

The Church finished the year with a deficit of £93,544 (£33,769 surplus in 2020/21) and therefore decreased its funds from £394,928 in 2020/21 to £301,384 in 2021/22. The decrease of £76,317 in the General Fund and £17,227 in Restricted and Designated Funds, resulted in a negative balance of funds in the General Fund of £14,131 and a balance of £315,515 in Restricted and Designated.

Church income in total was £389,239, which is below the £500,000 threshold requiring a Statement of Cash Flows to be prepared and so this has not been included in the 2021/22 Annual Accounts.

The statement of accounts for the year ended 31 August 2022 is attached.

Income

General Fund income decreased to £349,010 from £366,790 in 2020/21. The main movements are shown below:

- Furlough Income in 2020/21 was £33.3k and zero in 2021/22, due to the scheme ceasing
- However, the re-opening of the church for services and events meant that there were some increases in income.
 - Increase in Giving of £5k mainly due to the increase in Church Anniversary donations.
 - Increase in Special Events income of £10.7k, but this was offset by an increase in Special Events expenditure of £34.8k

Income received in Restricted and Designated Funds was £40.2k – a decrease of £6.3k from 2020/21, mainly for the following reasons:

- Decrease of £16k in giving to the fund for Live Streaming of Services. As local churches have re-opened the numbers viewing have decreased causing a reduction in donations.
- Increase in Special Offerings for Other Organisations of £6k, as special events and services have been held.
- Marginal increases in giving to Fellowship Groups and Flower & Hymn Sheet Funds.

Expenditure

General Fund spending has increased by £71.8k to £404.8k (2020/21 £333.0k). There were some key variances within these total figures

- Admin and Lay Ministry Salaries increased by £6.4k due to staff returning to full pay after having been on Covid Furlough in 2020/21. A backlog of PHI Contributions (income replacement insurance) for 2020/21 was also made in 2021/22.
- Office Supplies and Equipment increased by £3.2k mainly due to additional postage as mailings to membership resumed.
- Church Groups expenditure increased by £2.7k due to the resumption of in-person gatherings.
- Special Events increased by £34.8k as events such as the Carol Service, Fun and Fellowship Weekend, Daffodil Day and Healing Conference could again take place in 2021/22.
- The Music Account expenditure increased by £22k due to increases in salaries for the same reasons as outlined above. More significantly, the return of in-person services led to an increase in fees paid to professional musicians.
- Grants and Donations increased by £2.9k due to an increase in donations made to the St Vincent's Family Project (SVFP), but partially offset by the cessation of the donation to The Gate ceasing.

Designated and Restricted Fund expenditure increased by £29.4k to £78.0k (2020/21 £48.6). The key movements are detailed below:

- No distribution of Tithe Grants was made in 2020/21, but in 2021/22 £40k of was distributed.
- £6.9k was spent from the AVA/Server Replacement Fund to replace computer equipment.
- Expenditure on Live Streaming decreased by £26k through reduced reliance on technical consultants as in-house experience and skill grew. The training up of a church member to take on the technician role also resulted in savings.

Total Funds for the Church have decreased to £301,384 (2020/21 £394,928) with negative funds of £14,131 (2020/21 ££62,186) in the General Fund and £315,515 in Restricted and Designated Funds (2019/20 £332,742).

In 2021/22, £20.6k has been transferred from Church General Funds to Designated and Restricted Funds, being the allocation to the Tithe Fund.

The Contingency Fund stands unchanged at £148k, which represents approximately six months' worth of average essential expenditure (including payments to the Circuit). There was no increase in the Fund in 2021/22. At the start of the year, we expected that Church income may decrease to the extent that some contingency may need to be used to meet ongoing expenditure, but by the grace of God, we have not had to do so. The Contingency Fund is included within the Designated Total. The Budget for 2022/23 however, has a significant deficit, which will mean that the Contingency will be reduced.

We are truly thankful for God's grace and favour, which has sustained the Church, for the Managing Trustees and the Connexion, the staff of Central Hall Westminster Ltd, our members and regular worshippers (new and not so new) and supporters from all over whose prayers, generosity and support have kept us throughout this most unusual year. To God be the glory! We look forward to exciting times ahead.

METHODIST CENTRAL HALL WESTMINSTER CHURCH

Trustee's Annual Report on Finance and Governance

The Charity's annual report and accounts for the year ended 31 August 2021 have been prepared in accordance with the Charities Act 2011 and the Statement of Recommended Practice 2015 applicable to charities preparing their accounts in accordance with the Financial Reporting Standard in the UK and Republic of Ireland issued in July 2014.

Full Name of Church: **Methodist Central Hall Westminster**

Charity Registration Number: **1145076**

Date of registration: **15 December 2011**

Main communication address: **Methodist Central Hall, Storey's Gate,
Westminster, London SW1H 9NH**

The members of the Methodist Central Hall Westminster Church Council are the Charity Trustees, membership being made up of circuit and church office holders, ministers and representatives appointed by the church at the Annual Church Meeting. A full list of Council membership is shown in the notes to this report.

Circuit Stewards: **Wesley Gibbs (Senior)
Daniella Fetuga-Joensuu
Helen Tudor
Joseph Adjei
Ama Ackah-Yensu**

Treasurer: **Ama Ackah-Yensu**

Independent Examiner: **Buzzacott LLP
130 Wood St
London
EC2V 6DL**

Bank: **HSBC
The Peak
333 Vauxhall Bridge Road
Victoria
London SW1V 1EJ**

Investment Bankers: **Central Finance Board of the Methodist Church**

Aims and Objectives

The charity's objective is to act as a resource provider within the area around Westminster for the Methodist Church:

It aims to be a vital Christian presence in the heart of London.

The purposes of the Methodist Church are, and shall be deemed to have been, since the Date of Union, the advancement of:

- a) The Christian faith in accordance with the doctrinal standards and discipline of The Methodist Church;
- b) Any charitable purpose for the time being of any Connexional, District, Circuit, local or other organisation of The Methodist Church;
- c) Any charitable purpose for the time being of any society or institution subsidiary or ancillary to The Methodist Church; and
- d) Any purpose for the time being of any charity being a charity subsidiary or ancillary to The Methodist Church.

Public Benefit

We confirm that the trustees have had regard to the Charity Commission's guidance on public benefit.

Structure, Governance and Management

The governing document for the church is the Deed of Union (1932) and Methodist Church Act (1976).

Detailed governance arrangements are outlined within the Constitutional Practice and Discipline of the Methodist Church by order of the annual conference (CPD).

Day to day management of the church is undertaken by the Church and Circuit Stewards and Ministerial Team with input from the Leadership Team.

Trusteeship is exercised by the elected members of the Church Council.

Trustee Training

Trustees are pointed to a range of guidance produced by The Methodist Connexion to support the effective running of the church and the role of Trustees.

Related Parties

The Church, like all local Methodist Churches is situated in a Circuit and is part of the Methodist Church of Great Britain. It consequently locates itself in both its polity and structure. In structural terms the Church is the single Methodist Society in the Westminster Circuit, which is one of some 35 circuits (groupings of local churches) making up the London Methodist District. In terms of Polity and Constitution, it, like all Methodist circuits, is accountable to the annual Methodist Conference.

Somewhat unusually, the Westminster Circuit consists of only one local society (church): Methodist Central Hall Westminster, which consequently is constituted so that wherever possible, local church and local circuit matters share the same constitution (by applying annually Methodist Standing Order 511).

Another unusual aspect of the Circuit/Church is the fact that its Trustees are appointed annually by the annual Conference of the Methodist Church of Great Britain, rather than, more commonly, the circuit meeting and church council.

A third related party, in addition to the Circuit and the Trustees is Central Hall Westminster Ltd, a not-for-profit company formed in 1999 to run an events and conference business using the large and prestigious premises in central London.

Regular meetings of each of these three entities take place, with the Superintendent and Deputy Superintendent Ministers being members of each of the three, thereby having a strategic overview of the total ministry of the Circuit and its related parties.

Risk Management

The major risks associated with the life and ministry of the Church, located in Methodist Central Hall Westminster, are identified and recorded by the Trustees, with professional advice taken as required. An annual review process is undertaken and recorded.

In terms of financial governance, income and expenditure are regularly and routinely monitored, and are compared with the approved annual budget on at least a quarterly basis to detect trends as part of the risk management process and to avoid unforeseen calls on reserves.

We note the following items, all of which are noted on the Risk Register.

- An annual grant to the Circuit is given by the Trustees. This is made possible by profits made by Central Hall Westminster Ltd. Any 'lean years' – and particularly several lean years – would affect the ability of the Trustees to award the grant.
- The impact of the COVID-19 pandemic on the operations of Central Hall Westminster Ltd has been immense. The building's closure and consequent hibernation of the business has meant that profits which would have been tithed to the Trustees have dried up, thus impacting their ability to provide the same level of grant to the Church, as with previous years.
- The as yet unknown plan relating to the 'decanting' of the House of Commons and House of Lords from the Palace of Westminster. Methodist Central Hall Westminster is, because of its proximity, one of a handful of buildings currently in conversation with 'Black Rod' about what are termed "business continuity talks".
- The ever-present risk of terror attacks and security breaches, given the location of the church. For the past four years the Metropolitan Police have estimated the risk of such as 'severe' and give regular security briefings to Circuit officials as to office holders of other large buildings in and around Parliament Square.
- The damage to reputation, given the high usage of the premises by very many clients.
- Safeguarding risks, exacerbated by the very high numbers of people using the building each week. In line with Methodist rulings, safeguarding procedures have, and continue to be improved and overhauled.

Safeguarding

Every person has a value and dignity which comes directly from the creation of male and female in God's own image and likeness. Christians see this potential as fulfilled by God's re-creation of us in Christ. Among other things this implies a duty to value all people as bearing the image of God and therefore to protect them from harm.

Methodist Connexional practice outlines commitment to the following principles:

- The care and nurture of, and respectful pastoral ministry with, all children, young people and adults.
- The safeguarding and protection of all children, young people and adults when they are vulnerable.
- The establishing of safe, caring communities which provide a loving environment where there is informed vigilance as to the dangers of abuse.
- We will carefully select and train all those with any responsibility within the Church, in line with Safer Recruitment principles, including the use of criminal records disclosures and registration with the relevant vetting and barring schemes.
- We will respond without delay to every complaint made which suggests that an adult, child or young person may have been harmed, cooperating with the police and local authority in any investigation.
- We will seek to work with anyone who has suffered abuse, developing with them an appropriate ministry of informed pastoral care.
- We will seek to challenge any abuse of power, especially by anyone in a position of trust.
- We will seek to offer pastoral care and support, including supervision and referral to the proper authorities, to any member of our church community known to have offended against a child, young person or vulnerable adult.
- In all these principles we will follow legislation, guidance and recognised good practice.

The Methodist Central Hall Westminster Church commits itself to: -

- Ensuring the implementation of the Connexional Safeguarding Policy; government legislation, guidance and safe practice in the circuit and in the churches.
- The provision of support, advice and training for lay and ordained people that will ensure people are clear and confident about their roles and responsibilities in safeguarding and promoting the welfare of children and adults who may be vulnerable.

The Safeguarding Policy is approved annually by the Church Council and revised in line with guidelines and directives from the Methodist Church of Great Britain.

Reserves Policy

The Reserves Policy for the Church is to hold a contingency sum equivalent to a minimum of three months', and ideally six months', average expenditure. This should be sufficient to meet any unforeseen item of major expenditure and/or to be able to continue, in the short term, funding planned activities in the event of any inability to raise funds to cover the Church's full expenses, including the assessment payable to the Circuit.

The Contingency Fund as at 31 August 2022 was £148k, which is equivalent to approximately six months' average expenditure.

However, the continuing impact of the pandemic means that the reduced levels of grant from the Conference Property Trustees will continue into 2022/23 and a significant deficit is budgeted for in 2022/23, which will reduce the level of contingency quite considerably. The Church Council will continue to monitor this and endeavour to take measures to maintain reserves at a healthy level.



Signed:

Revd Anthony Miles (Chair of Trustees)

Date: 19 March 2023

METHODIST CENTRAL HALL WESTMINSTER - CHURCH ACCOUNTS
Statement of Financial Activities (SOFA) for the Year Ended 31 August 2022

	Notes	Unrestricted Fund (General)	Designated Funds	Restricted Funds	2021/22 Totals	2020/21 Totals
		£	£	£	£	£
Income and Endowments From:						
Donations and Legacies						
Offerings and Tax recoverable	13	150,507	0	0	150,507	128,565
Donations	13	40,194	0	0	40,194	65,950
Anniversary Giving		12,366	0	0	12,366	4,359
Grant (Trustees)	14	130,000	0	0	130,000	130,164
Donations for Use of Rooms		220	0	0	220	250
Visitors Services & Catering	15	45	0	0	45	0
Legacies		319	0	0	319	
Interest and Investment Income	16	1,317	0	0	1,317	499
Other						
Special Events	17	14,020	0	0	14,020	3,288
Church Groups	18	22	0	0	22	375
Covid-19 Furlough		0	0	0	0	33,340
Designated Funds (See Notes Fund Details)	12	0	2,187	0	2,187	490
Restricted Funds (See Notes Fund Details)		0		38,042	38,042	48,097
Total Income and Endowments		349,010	2,187	38,042	389,239	415,377

METHODIST CENTRAL HALL WESTMINSTER - CHURCH ACCOUNTS
Statement of Financial Activities (SOFA) for the Year Ended 31 August 2022

	Notes	Unrestricted Fund (General)	Designated Funds	Restricted Funds	2021/22 Totals	2020/21 Totals
Expenditure		£	£	£	£	£
Office & Ministry Staff		66,100	0	0	66,100	59,709
Net Payment for Circuit Expenses		194,023	0	0	194,023	193,485
Office Supplies - Staff and Equipment	19	15,491	0	0	15,491	12,271
Internal Organisations and Events						
Sanctuary		1,634	0	0	1,634	33
Church Groups	20	208	0	0	208	665
Special Events	21	36,726	0	0	36,726	1,885
Other Expenditure						
Music Account	22	55,924	0	0	55,924	32,035
Other expenditure	23	16,694	0	0	16,694	20,204
Advertising		5,672	0	0	5,672	4,959
Grants & Donations	24	12,284	0	0	12,284	7,790
Designated Funds (See Notes Fund Details)	12	0	49,012	0	49,012	1,426
Restricted Funds (See Notes Fund Details)		0	0	29,015	29,015	47,146
Total Expenditure		404,756	49,012	29,015	482,783	381,608
Net Income / (Expenditure)		(55,746)	(46,825)	9,027	(93,544)	33,769
Transfers Between Restricted Funds and General Funds		(20,571)	20,571	0	0	0
Net Income after transfers		(76,317)	(26,254)	9,027	(93,544)	33,769
Total funds brought forward		62,186	258,813	73,929	394,928	361,159
Total funds carried forward		(14,131)	232,559	82,956	301,384	394,928

Money received and passed on to External Organisations (For information only)

	2021/22 £	2020/21 £
Balance brought forward from last year	2,636	2,324
Correction to balance brought forward	(287)	0
Offerings/Gifts - received for External Organisations	8,407	4,447
Offerings/Gifts - passed to External Organisations	(8,674)	(4,135)
Balance carried forward	2,082	2,636

METHODIST CENTRAL HALL WESTMINSTER - CHURCH ACCOUNTS
CHURCH BALANCE SHEET for the Year Ended 31 August 2022


	Notes	Unrestricted Fund (General)	Designated Funds	Restricted Funds	2021/22 Totals	2020/21 Totals
Current Assets		£	£	£	£	£
Debtors and prepayments	25	30,490	0	1,184	31,674	48,152
Cash at bank and in hand	26	(7,075)	0	28,691	21,616	73,877
Central Finance Board deposit	27	0	232,559	53,161	285,720	328,607
Total current assets		23,415	232,559	83,036	339,010	450,636
Creditors (due in under 1 year) & unused funds	28	(37,546)	0	(80)	(37,626)	(55,708)
Net current assets		(14,131)	232,559	82,956	301,384	394,928
<i>Total assets less current liabilities</i>		(14,131)	232,559	82,956	301,384	394,928
Net assets		(14,131)	232,559	82,956	301,384	394,928
Funds of the Church						
Unrestricted Fund (General)		(14,131)		0	(14,131)	62,186
Other Funds (restricted & designated)		0	232,559	82,956	315,515	332,742
Total funds		(14,131)	232,559	82,956	301,384	394,928

I confirm that these accrual-based accounts for the year ended 31 August 2022 have been prepared from the records of the Church and that they include all funds under the control of the Church Council.

Signed: 
Ama Ackah-Yensu (Treasurer)

Date: 19 March 2023

I confirm that the annual report and accounts for the year ended 31 August 2022 were presented to the Church Council at its meeting on 19 March 2023 and were approved.

Signed: 
Revd Tony Miles (Chair of the Church Council)

Date: 19 March 2023

METHODIST CENTRAL HALL WESTMINSTER - CHURCH ACCOUNTS
Statement of Financial Activities (SOFA) for the Year Ended 31 August 2021

	Notes	Unrestricted Fund (General)	Designated Funds	Restricted Funds	2020/21 Totals		2019/20 Totals
		£	£	£	£		£
Income and Endowments From:							
Donations and Legacies							
Offerings and Tax recoverable	13	128,565	0	0	128,565		153,979
Donations	13	65,950	0	0	65,950		24,763
Anniversary Giving		4,359	0	0	4,359		13,001
Grant (Trustees)	14	130,164	0	0	130,164		260,328
Donations for Use of Rooms		250	0	0	250		3,283
Visitors Services & Catering	15	0	0	0	0		1,131
Interest and Investment Income	16	499	0	0	499		2,231
Other							
Special Events	17	3,288	0	0	3,288		23,043
Church Groups	18	375	0	0	375		704
Covid-19 Furlough		33,340	0	0	33,340		21,003
Designated Funds (See Notes Fund Details)		0	490	0	490		5,142
Restricted Funds (See Notes Fund Details)	12	0	0	48,097	48,097		67,991
Total Income and Endowments		366,790	490	48,097	415,377		576,599

METHODIST CENTRAL HALL WESTMINSTER - CHURCH ACCOUNTS
Statement of Financial Activities (SOFA) for the Year Ended 31 August 2021

	Notes	Unrestricted Fund (General)	Designated Funds	Restricted Funds	2020/21 Totals	2019/20 Totals
Expenditure		£	£	£	£	£
Office & Ministry Staff		59,709	0	0	59,709	70,317
Net Payment for Circuit Expenses		193,485	0	0	193,485	222,744
Office Supplies - Staff and Equipment	19	12,271	0	0	12,271	26,271
Internal Organisations and Events						
Sanctuary		33	0	0	33	2,131
Church Groups	20	665	0	0	665	6,109
Special Events	21	1,885	0	0	1,885	34,002
Other Expenditure						
Music Account	22	32,035	0	0	32,035	44,839
Other expenditure	23	20,204	0	0	20,204	20,233
Advertising		4,959	0	0	4,959	9,827
Grants & Donations	24	7,790	0	0	7,790	47,210
Designated Funds (See Notes Fund Details)	12	0	1,426	0	1,426	29,744
Restricted Funds (See Notes Fund Details)		0	0	47,146	47,146	60,142
Total Expenditure		333,036	1,426	47,146	381,608	573,569
Net Income / (Expenditure)		33,754	(936)	951	33,769	3,030
Transfers Between Restricted Funds and General Funds		(32,450)	32,487	(37)	0	0
Net Income after transfers		1,304	31,551	914	33,769	3,030
Total funds brought forward		60,882	227,262	73,015	361,159	358,129
Total funds carried forward		62,186	258,813	73,929	394,928	361,159

METHODIST CENTRAL HALL WESTMINSTER - CHURCH ACCOUNTS
CHURCH BALANCE SHEET for the Year Ended 31 August 2021

	Notes	Unrestricted Fund (General)	Designated Funds	Restricted Funds	2020/21 Totals	2019/20 Totals
Current Assets		£	£	£	£	£
Debtors and prepayments	25	48,152	0	0	48,152	56,552
Cash at bank and in hand	26	73,877	0	0	73,877	20,640
Central Finance Board deposit	27	(6,050)	258,813	75,844	328,607	333,768
Total current assets		115,979	258,813	75,844	450,636	410,960
Creditors (due in under 1 year) & unused funds	28	(53,793)	0	(1,915)	(55,708)	(49,801)
Net current assets		62,186	258,813	73,929	394,928	361,159
<i>Total assets less current liabilities</i>		62,186	258,813	73,929	394,928	361,159
Net assets		62,186	258,813	73,929	394,928	361,159
Funds of the Church						
Unrestricted Fund (General)		62,186	0	0	62,186	60,881
Other Funds (restricted & designated)		0	258,813	73,929	332,742	300,277
Total funds		62,186	258,813	73,929	394,928	361,159

METHODIST CENTRAL HALL

Westminster Church

Notes to the Financial Statements for the year ended 31 August 2022

1. Basis of accounting

These financial statements are prepared on a going concern basis, under the historical cost Convention.

The financial statements have been prepared in accordance with the Financial Reporting Standard applicable in the UK and Republic of Ireland (FRS 102). The Charity is a public benefit entity for the purposes of FRS 102 and therefore the Charity also prepared its financial statements in accordance with the Statement of Recommended Practice applicable to charities preparing their accounts in accordance with the Financial Reporting Standard applicable in the UK and Republic of Ireland (The FRS 102 Charities SORP) and the Charities Act 2011.

The financial statements are prepared in sterling, which is the functional currency of the charity. Monetary amounts in these financial statements are rounded to the nearest pound.

The principal accounting policies adopted in the preparation of the financial statements are set out below.

Going Concern

After making reasonable enquiries and receiving assurances from the Conference Property Trustees, the Trustees have a reasonable expectation that the Church has adequate resources to continue in operational existence for the foreseeable future and do not consider there to be any threat to the going concern status. Therefore, the Trustees continue to adopt the going concern basis in preparing the financial statements and confirm there are no material uncertainties at the date of the approval of these financial statements.

2. Funds

The funds held constitute: General Funds for any purpose of the Church which are Unrestricted. Restricted funds, which are held for a narrower purpose including those for internal organisations. Details of each material fund are disclosed in the notes to the Accounts.

3. Accounting Policies

Basis

These accounts have been prepared under the historical cost convention except that investments are shown at their market value at the end of the year, on the accruals basis to show a true and fair view of the Church's financial position and activities.

Income

Income is included in the Statement of Financial Activities (SOFA) when the Church becomes entitled to the funds, the receipt is probable and the amount can be measured reliably.

Expenditure

This is recognised when a liability is incurred, or a constructive obligation arises, that results in the payment being unavoidable. Liabilities are recognised as soon as an outflow of economic benefit is considered more likely than not under the legal or constructive obligation committing the Church to pay out resources.

Cash and Cash Equivalents

Cash and cash equivalents include cash in hand, deposits held at call with banks, other short-term liquid investments with original maturities of three months or less, and bank overdrafts. Bank overdrafts are shown within borrowings in current liabilities.

Grants

Grants made by the Church from its own funds are recognised in full at the time of agreement or when the Church accepts that there is a legal or operational obligation to make the payment. When the grant is recurrent over more than one year the balance payable in future years is treated as a provision for future commitments in the Balance Sheet against the appropriate fund, the provision being released in future years as instalments are paid in accordance with the originally agreed terms.

VAT

Since the Church is not VAT registered, all input VAT is charged with the expenses to which it refers.

Tangible fixed assets for use by the Church

These are capitalised if they can be used for more than one year, and individually cost at least £1,000. There is no freehold property owned by the Church.

Financial instruments

Basic financial instruments are measured at amortised cost.

Debtors and creditors

Debtors and creditors receivable or payable within one year of the reporting date are carried at their transaction price and subsequently measured at amortised cost less any impairment.

Critical accounting estimates and areas of judgement

In preparing financial statements it is necessary to make certain judgements, estimates and assumptions that affect the amounts recognised in the financial statements. There are no judgements and estimates are considered by the Trustees to have a significant effect on amounts recognised in the financial statements.

4.Donations and legacies	Unrestricted	Restricted	2022 Total	2021 Total
	£	£	£	£
Collections	124,091	38,042	162,133	147,920
Tax credits	26,155	0	26,155	0
Donations	42,141	0	42,141	67,902
Total	192,387	38,042	230,429	215,822
5. Other trading activities	Unrestricted	Restricted	2022 Total	2021 Total
	£	£	£	£
CD Project	500	0	500	0
Total	500	0	500	0
6. Investment income	Unrestricted	Restricted	2022 Total	2021 Total
	£	£	£	£
Central Finance Board	1,278	0	1,278	460
Other	39	0	39	39
Total	1,317	0	1,317	499

7. Trustees

None of the Trustees, or persons connected with them, received any remuneration or other benefits from the Church or any connected organisation as a result of their office during the year ended 31 August 2022

	2021/22	2020/21
Number of trustees who were paid expenses	5	5
	£	£
Total amount paid	6,815	2,157

Nature of expenses claimed: Car mileage, public transport, hospitality and miscellaneous. These expenses have been incurred by the trustees in the course of fulfilling their pastoral responsibilities.

8. Independent Examiners Fees

	2021/22	2020/21
	£	£
Fees for reporting on the accounts	1,680	1,680
Other fees (for advice, accountancy services etc)	-	-
Total	1,680	1,680

9. Paid Employees

Staff costs (excluding stipends) during the year were as below: -

	2021/22	2020/21
	£	£
Gross wages, salaries and benefits in kind	70,633	79,745
Employer's National Insurance	3,805	4,212
Pension costs	6,140	9,980
Total Staff Costs	80,578	93,937
Average number of full-time equivalent employees in the year were	3.9	3.9

10. Reserves Policy

	2021/22	2020/21
	£	£
General Funds held	148,000	148,000

The current level of reserves is equivalent to nearly 6 months of average expenditure including payments made to the Circuit.

Policy for Restricted Funds

No policy as such except that such funds may only be used for the purpose for which they have been given / donated.

Terms relating to Endowment Funds
 No such funds are held by the church.

This Reserves Policy has been approved by the Church Council.

11. Related Parties

Name of related party	Description of transaction	Income from related party during the year	Payments to related parties during the year	Loans to related party during the year	Amounts owed by related party as on 31 Aug 2022
		£	£	£	£
Fund for Support of Presbyters & Deacons	Gift made by Church	0	200	0	0
Fund for Property	Gift made by Church	0	330	0	0
London Mission Fund Payment	Gift made by Church	0	200	0	0
Total		0	730	0	0

12. Details of Designated and Restricted Funds

2021/22

CHURCH FUNDS	Balance B/Fwd 01/09/21	Income	Expenditure	Transfer Between Funds	Balance C'Fwd 31/08/22
FUNDS	£	£	£	£	
General - Designated					
Sunday Catering	329	847	(1,264)	0	(88)
Tithe	40,229	0	(40,000)	20,571	20,800
Tithe Reserve	3,400	0	0	0	3,400
CD Project	13,967	500	0	0	14,467
AVA & Server Replacement	17,030	0	(6,908)	0	10,122
Church Space Refurbishment & Maintenance	23,858	0	0	0	23,858
Fees to be Paid for Special Services	0	840	(840)	0	0
Digital Outreach and Engagement	12,000	0	0	0	12,000
Contingency	148,000	0	0	0	148,000
TOTAL DESIGNATED	258,813	2,187	(49,012)	20,571	232,559
Restricted					
Monday Guild	362	0	0	0	362
Flower Fund	409	1,906	(2,260)	40	95
Hymn Sheet Fund	2,308	528	0	40	2,876
Special Offerings to be Donated	267	6,385	(6,811)	159	0
Night Shelter	1,488	0	0	0	1,488
Welcome Box Project	593	0	0	0	593
Christian Aid	0	655	(655)	0	0
World Mission Easter Offering	0	1,208	(1,208)	0	0
Benevolent Fund	6,706	3,445	(5,089)	(269)	4,793
Music & Worship Legacy	45,650	0	0	0	45,650
Organ Recital Fund	0	0	0	110	110
Friends of Westminster	100	50	0	0	150
Ghana Fellowship	2,010	1,636	(1,019)	(80)	2,547
Sierra Leone & Gambia Fellowship	0	105	(52)	0	53
Online Services	14,036	22,124	(11,921)	0	24,239
Total Restricted Funds	73,929	38,042	(29,015)	0	82,956
TOTAL RESTRICTED & DESIGNATED FUNDS	332,742	40,229	(78,026)	20,571	315,515
General Fund	62,186	349,010	(404,756)	(20,571)	(14,131)
TOTAL FUNDS	394,928	389,239	(482,783)	0	301,384

The balance of Designated and Restricted Funds has decreased by £17,207. There has been a net transfer from Church General Funds of £20,571 to the Tithe Fund for distribution to other charitable organisations nominated by church members.

CHURCH - NOTES TO THE FINANCIAL STATEMENTS

INCOME	2021/22		2020/21	
	£	£	£	£
General Funds (Unrestricted)				
Note 13 - Offerings and tax recoverable				
Envelope Scheme	55,746		53,312	
Banker's Orders	38,935		42,654	
Loose Cash	26,326		3,856	
Tax recovered	26,155		26,791	
Charities Trust	1,947		1,952	
Lunchtime Services	1,398		0	
		150,507		128,565
Donations		40,194		65,950
		190,701		194,515
Note 14 - Trustees Grant				
SVFP Grant	9,100		9,234	
SVFP Rent	13,000		13,008	
Church Grant General	107,900		107,922	
		130,000		130,164
Note 15 - Visitors Services				
Visitor services - Donations	45		0	
		45		0
Note 16 - Interest & investment income				
Dividend Income	39		39	
Deposit interest	1,278		460	
		1,317		499
Note 17 - Special Events				
Daffodil Day	1,753		98	
Christmas Lunch	2,142		0	
Prayer and Healing Ministry including Conference	1,000		3,121	
The Gathering	632		0	
Carol Service	2,775		42	
Anniversary Dinner	1,160		0	
Church Fun Fellowship Retreat	4,421		0	
Bookstall Sales	125		0	
Miscellaneous	12		27	
		14,020		3,288
Note 18 - Church Groups & Ministries				
JC Live	22		375	
		22		375

EXPENDITURE	2021/22		2020/21	
	£	£	£	£
<i>Note 19 Office Supplies</i>				
Photocopying	1,337		2,247	
General Stationery	889		897	
Printing	3,203		1,459	
Literature	349		2,157	
Easter Offering / Gift envelopes	458		0	
Postage	3,648		976	
Computer supplies & software incl Digital Outreach	4,867		4,535	
Office Equipment & Supplies	740		0	
		<u>15,491</u>		<u>12,271</u>
<i>Note 20 Church Groups</i>				
JC Live	152		465	
YPF	56		0	
		<u>208</u>		<u>465</u>
<i>Notes 21 -Special Projects & Events</i>				
Daffodil Day	5,372		250	
Christmas lunch & party	3,917		0	
Prayer and Healing Ministry including Conference	3,529		1,385	
Gathering	3,243		250	
Fun and Fellowship Weekend	7,648		0	
Carol Service	7,506		0	
Anniversary Dinner	2,268		0	
Cathedral Events	2,948		0	
Good Friday in Victoria Street	295		0	
		<u>36,726</u>		<u>1,885</u>
<i>Note 22 Music Account</i>				
Fees for Directors of Music / Musicians / Choirs	55,149		32,035	
Music Expenses	775		0	
		<u>55,924</u>		<u>32,035</u>

CHURCH - NOTES TO THE FINANCIAL STATEMENTS

	2021/22		2020/21	
RESOURCES EXPENDED	£	£	£	£
<i>Note 23 - Other expenditure</i>				
Pulpit supply	1,849		305	
Lay training	163		1,228	
Website development & maintenance	1,479		12,059	
In-house hospitality / Volunteers				
Dinner	168		0	
Hospitality & Restaurant Vouchers	600		110	
Bank charges	625		246	
Miscellaneous	7,718		3,407	
Materials and Items for Services	2,055		719	
Subscriptions	357		450	
Independent Examiners Fees	1,680		1,680	
		<u>16,694</u>		<u>20,204</u>
<i>Note 24 Grants & Donations</i>				
The Fund for the Support of Presbyters and Deacons (previously Auxiliary Fund) Payment	200		200	
Property Fund	330		330	
London Mission Fund	200		200	
		730		730
St Vincent's Family Project	10,000		5,560	
The Gate Crisis Pregnancy Centre	0		1,500	
		<u>10,730</u>		<u>7,790</u>

CHURCH - NOTES TO THE FINANCIAL STATEMENTS

	2021/22		2020/21	
BALANCE SHEET NOTES	£	£	£	£
<i>Note 25 - Debtors and Prepayments</i>				
Debtors				
Accrued Income				
Gift Aid for General Fund	29,637		29,536	
Covid-19 Furlough	0		13,737	
Owed by Circuit	0		2,687	
	<u>29,637</u>		<u>45,960</u>	
<i>Note 26 - Cash at Bank and in hand</i>				
<i>General Fund - HSBC Current Account</i>				
General Fund - HSBC Current Account	(7,631)		73,321	
General Fund Sanctuary Account	309		309	
General Fund Petty Cash	247		247	
Restricted Funds HSBC	28,691		0	
	<u>21,616</u>		<u>73,877</u>	
<i>Note 27 - Central Finance Board</i>				
Designated Funds	232,559		258,813	
Restricted Funds	53,161		75,844	
General Fund	0		(6,050)	
	<u>285,720</u>		<u>328,607</u>	
	<u>285,720</u>		<u>328,607</u>	
<i>Note 28 - Creditors (due in under 1 year)</i>				
Accrued Expenses				
Independent Examiners Fees	1,680		1,680	
Staff expenses / Musicians	5,113		9,368	
Hospitality	0		70	
Digital Outreach Salary & Expenses	788		1,269	
Photocopying & Printing	1,953		1,998	
Computer Supplies & Multi Media	751		180	
Website Maintenance & Development	164		116	
Advertising	5,472		0	
Miscellaneous & items for Services	119		200	
Owed to Circuit	21,506		38,619	
Designated / Restricted Funds	80		1,915	
Circuit Expenses	0		293	
	<u>37,626</u>		<u>55,708</u>	
Prepaid Expenses				
Staff Expenses & Salaries	0		1,961	
Miscellaneous & items for Services	179		13	
Hospitality	41		0	
Circuit Expenses	0		218	
Printing and Stationery	633		0	
Designated / Restricted Funds	1,184		0	
	<u>2,037</u>		<u>2,192</u>	
	<u>39,663</u>		<u>57,900</u>	

Church Trustees as at 31 August 2022

The following served as trustees during the year and/or were trustees at the date of signing the accounts.

Revd. Tony Miles	Ollie McEwen
Revd. Lansford Penn-Timothy	Joe Awotwi
Deacon Alison McMillan	Tony Ackah-Yensu
Revd. Gordon Newton	Alison Bryan
Daniella Fetuga-Joensuu	Judith Mitchell
Helen Tudor	Philippa Muir
Wesley Gibbs	Christina Asare Owusu
Esther Buckman	Charlotte Rankin
Emmanuel Asante	Sarita Lightfoot-Taylor
Abdul Bah	Esther Thomas
Michael Davies	Mark Williamson
Regina Boye	Jacob Baiden
Denzil Cummings-John	Kate Jones
Comfort Golightly	Seth Kofi Otoo
Joseph Adjei	Grace Sangmuah
Shirley Bernisto	Christina Fashola
Grace Kermah	Chika Unaka
Sabrina Malcolm	Aretha Solanke
Ama Ackah-Yensu	Charles Bushell
Jocelyn Boafo	MS Kim
John Philips	Omotayo Roberts
Dinah Longdon	Marko Joensuu

Independent examiner's report to the trustees of Methodist Central Hall Westminster Church

I report to the charity Trustees on my examination of the accounts of the charity for the year ended 31 August 2022.

Responsibilities and basis of report

As the Trustees of the Charity you are responsible for the preparation of the accounts in accordance with the requirements of the Charities Act 2011 ('the Act').

I report in respect of my examination of the charity's accounts carried out under section 145 of the 2011 Act and in carrying out my examination I have followed all the applicable Directions given by the Charity Commission under section 145(5)(b) of the Act.


Independent examiner's statement

Since the charity's gross income exceeded £250,000 your examiner must be a member of a body listed in section 145 of the 2011 Act. I confirm that I am qualified to undertake the examination because I am a member of the Institute of Chartered Accountants in England and Wales, which is one of the listed bodies.

I have completed my examination. I confirm that no material matters have come to my attention in connection with my examination giving me cause to believe that in any material respect:

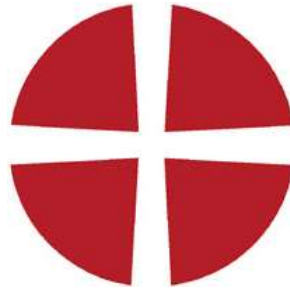
- ♦ accounting records were not kept in respect of the charity as required by section 130 of the Act; or
- ♦ the accounts do not accord with those records; or
- ♦ the accounts do not comply with the applicable requirements concerning the form and content of accounts set out in the Charities (Accounts and Reports) Regulations 2008 other than any requirement that the accounts give a 'true and fair view' which is not a matter considered as part of an independent examination.

I have no concerns and have come across no other matters in connection with the examination to which attention should be drawn in this report in order to enable a proper understanding of the accounts to be reached.



Katharine Patel ACA
Buzzacott LLP
Chartered Accountants
130 Wood Street
London EC2V 6DL

23 March 2023



**THE METHODIST CHURCH
STANDARD FORM OF ACCOUNTS
ACCRUALS BASIS**

For the year ended 31 August 2022

**METHODIST CENTRAL HALL
Westminster**

Registered Charity No 1145076

London Mission (Westminster) Circuit No. 35 / 03

SUPERINTENDENT MINISTER

Revd Tony Miles

CIRCUIT STEWARDS

**Wesley Gibbs (Senior)
Daniella Fetuga-Joensuu
Helen Tudor
Joseph Adjei
Ama Ackah-Yensu (Treasurer)**

LONDON MISSION (WESTMINSTER) CIRCUIT 35 / 03

TRUSTEES' ANNUAL REPORT

Introduction

This Annual Report gives an account of the mission and ministry of The London Mission (Westminster) Methodist Circuit, through its single society Methodist Central Hall Westminster. It represents considerable commitment on the part of its members, who both gather for worship and learning, and disperse in witness, being involved in a variety of means of service.

Aims and Organisation

Our mission is to be a vital Christian presence in the heart of London. Our vision statement declared on the order of worship each week is: "Methodist Central Hall Westminster – a global Christian family following Jesus at the heart of London."

Review of the Year – Regrouping and Rebuilding

With the restrictions of the Covid Pandemic eventually being lifted, we have worked hard to gather our in-person congregation again and this has not been easy. Many have been nervous about travelling into London. There has been the added obstacle of an unprecedented number of events in Westminster (marathons, bike rides, and filming etc), and we have also been hindered by the Congestion Charge. Nevertheless, our community has gradually been regrouping. The challenge has been to rebuild a church that is relevant to a world transformed by a virus and other global issues. We have over 60% of our regular worshippers returning to worship on a Sunday morning, with Special services like Easter seeing larger numbers (80%). We are hugely grateful to the entire staff team and those who are lay volunteers, for their commitment, prayer, and faithfulness. At times, there have been few around to share the load, but it's good to see more people stepping up to help us rise to new opportunities. It has been wonderful to see our Vision Statement becoming a reality.

Midweek Lunchtime Services

These resumed last September and got off to a slow start, due to very few office workers being back. However, we have grown a new nucleus of our own members who attend, we have welcomed almost 30 visitors and tourists and are starting to see a few office workers occasionally. There was a good attendance at a special service for the Platinum Jubilee, attended by some from the Business Centre.

Confirmation and Reception Into Membership, Baptisms and 1st Anniversary Services

Despite the challenges above, we were delighted to Confirm 6 new Church Members and receive 5 more by way of transfer from other churches, with more transfers expected soon. It is encouraging that some new members are joining us because of



our online ministry. Due to our inability to hold special services during the pandemic, we have had a significant number of baptisms and first anniversary services to mark the death of loved ones.

Online Services and Meetings

Our live-streamed services continue to average 1.3K – 1.4K views each week. We are conscious that each view may represent multiple people as we know a lot of couples and families are viewing. We have overcome several technical challenges and we are still planning to raise funds to invest in new equipment for the Chapel and Great Hall. A church member has been trained and engaged as a freelance technician for our online services, enabling us to reduce costs.



Fun and Fellowship Weekend

Members of the ministerial team and **45 church members, aged between 5 and 90 years, went away to The Friars – Aylesford Priory, Kent for a weekend (June 10th-12th).** The theme was **'Wellbeing and the Kingdom of God'** and was led by a former Deacon at MCHW. It was a time of great blessing and encouragement.

Healing Ministry

Healing Services are rebuilding and have been well-received. Our annual healing conference returned to the Great Hall this year, after the 2020 conference was cancelled and the 2021 conference went out on-line.

Attendees were down on pre-covid times, but we had c.180 on the day. The worship was inspirational and the key speaker, Carolyn Lawrence's talks were extremely well received, with many commenting positively on the day and in subsequent emails. The leaders and combined prayer teams from MCHW and Premier Lifeline were kept extremely busy, and we had queues of people waiting in the aisles for anointing and individual prayer

The theme **'Transformation:- from the inside out'** particularly resonated with the huge need for healing for minds and hearts after the two years of fear and stress from covid.



Sanctuary

Sanctuary is the young adult congregation at MCHW, and also a fresh expression of church trying to reach out to people in their 20s and 30s across London. It's a group of people following Jesus so they can experience life in all its fullness, and be a part of turning London upside down. They do this by exploring spirituality, justice, and leadership. There are about 30 people in the community. In the year 2021/22 Sanctuary has developed:

- A corporate rhythm of life for community members.
- An intentional discipleship tool based on monthly coaching conversations.
- Four justice groups, looking at how we can make the world a better place by

campaigning for financial justice, racial justice, climate justice, and helping the homeless. On 30th June, Sanctuary held a special leadership training evening for social entrepreneurs and charity leaders and church volunteers, called [Building A Dream Team](#).

Ecumenical Events

We continue to maintain good relations with Westminster Abbey, Westminster Cathedral, and other churches in Westminster. We work with and support The Passage (helping homeless people in Westminster). Moreover, despite MCHW reducing the grant to the St Vincent's Family Project (SVFP) that is hosted on our premises, the work of the project has continued with the help of income from other sources. Our Superintendent was invited to participate in a number of national events at the Abbey, including the Commonwealth Service and a Service of Thanksgiving for the life of His Royal Highness The Prince Philip, Duke of Edinburgh. He also preached at St. Margaret's Church at the 5th Anniversary of the terror attacks on Westminster Bridge and New Palace Yard. This service was well attended by the families of the victims and the Prime Minister.

Local Preaching

We now have 11 Local Preachers. nine Fully Accredited, one On Trial, and another On Note. During the year we had a new Church Member by transfer, who is also Fully Accredited. Our preachers take part in our own services as well as preaching in various London Circuits.

Vice President of Conference

We are very proud to report that our church member, **Anthony Boateng, was inducted as Vice President of Conference** on Saturday 25th June 2022. We give thanks to God and continue to support him with our prayers during a busy and demanding year for him.

Cultural Groups

The Cultural Fellowship groups are in good spirits and have been overseen by Revd Lansford Penn-Timothy. This has fostered togetherness and collaboration. Communication among members through WhatsApp and other forums has significantly improved. Through these groups, we have been able to celebrate significant moments in their various cultures. There have been pockets of challenges here and there on the Food Policy but in general, it appears to be working well. A Farewell Service for Revd Dr Martyn Atkins, which had been delayed because of the Pandemic, was finally held on 8th May 2022. It was followed by a successful reception

that gave the opportunity for the various groups to serve food in line with the Food Policy that was initiated whilst he was in office.

Visitor Services and Bookstall

With the assistance of Paul Moynihan (our part-time archivist) and Frank Waller, who leads the volunteers, our Visitor Services Centre and Bookstall have been restructured and limited tours resumed. We have hosted visitors from the USA, Korea, and others from across the world. We hosted 23 ministers from the Methodist Church overseas, who were in the UK for the Methodist Conference 2022.

All in all, the year has been challenging and yet rewarding – an opportunity for us to experience God's grace in a very special way.

Our Superintendent Minister closes with words from St. Paul, ***'Therefore encourage one another and build each other up, just as in fact you are doing.'***
(1 Thessalonians 5:11)

May God richly bless us all as we share in his mission and further the work of the kingdom.

Plans for 2022/23

Circuit financial plans for the coming year have been prepared on the basis that there remain three full-time ordained staff members.

Circuit expenditure is expected to increase by 4.7% in 2022/23 due to inflationary increases in stipends and manse costs.

Financial Review

The Circuit's statement of accounts for the year ended 31 August 2022 is attached and shows a total deficit of £2,732, with a surplus in Restricted and Designated Funds of £5,268 after a transfer of £8,000 from the General Fund and a deficit of £8,000 in the General Fund.

Income

Circuit income has been drawn primarily from the assessment paid by the church (there being only one church within the Circuit). Income of £19,301 was generated from the temporary renting of a manse. There was an increase in income of £1,055 (from £213,556 in 2020/21 to £214,611 in 2021/22).

- Investment income increased by £418 due to increases in interest rates
- The rental income increased by £99
- The assessment paid by the church increased by £4

Expenditure

Circuit expenditure increased by £15,915 (from £201,428 in 2020/21 to £217,343), which was mainly due to:

- Increase in Stipends and Associated costs of £12,360 which included the pay increase in line with annual Conference recommendations and £10,828 contribution towards the Methodist Church pension deficit
- Increase in travel and accommodation of £4.2k due to activity increasing as Covid-19 restrictions were lifted

- Increase in Ministerial Training £1.1k due to Executive Coaching and Profiling Training in 2021/22
- Increase in Administration Staff Costs of £2.2k due to the fact that 2020/21 staff were Covid Furlough for some of the year, pay increase and PHI Contributions for 2020/21 and 2021/22 being paid in 2021/22

These increases were partly offset by decreases in:

- Manse Maintenance decreasing by £3.2k. In 2020/21 there was significant work carried out in Pond Green and Shirley Avenue manses.
- No removal costs being incurred in 2021/22 (£0.6k in 2020/21)

The District Assessment of £43,720, accounted for 21.7% of expenditure (there was no increase from 2020/21 to 2021/22). A significant part of this is passed on to the Connexion to fund the work of the wider Methodist Church.

Fund Balances

The balance on the Circuit General Fund is £1,934,755, of which £1,932,713 represents the book value of the manses.

Circuit Restricted and Designated Funds have increased by £5,268 to £335,678 in 2021/22 (£330,410 in 2020/21). £8k was allocated to the Manse Maintenance Fund from General Funds. There was only £2.7k of expenditure across all funds.

Trustee's Annual Report on Finance and Governance

The Charity's annual report and accounts for the year ended 31 August 2022 have been prepared in accordance with the Charities Act 2011 and the Statement of Recommended Practice applicable to charities preparing their accounts in accordance with the Financial Reporting Standard in the UK and Republic of Ireland issued in July 2014.

Full Name of Church: **London Mission (Westminster) Circuit**

Charity Registration Number: **1145076**

Date of registration: **15 December 2011**

Main communication address: **Methodist Central Hall, Storey's Gate,
Westminster, London SW1H 9NH**

The members of the London Mission (Westminster) Circuit Meeting are the Charity Trustees, membership being made up of circuit office holders, ministers and representatives appointed by the church at the Annual Church Meeting. A full list of members is shown in the notes to this report.

Circuit Stewards: **Wesley Gibbs (Senior)
Daniella Fetuga-Joensuu
Helen Tudor
Joseph Adjei
Ama Ackah-Yensu**

Treasurer: **Ama Ackah-Yensu**

Independent Examiner: **Buzzacott LLP
130 Wood Street
London
EC2V 6DL**

Bank: **HSBC
The Peak
333 Vauxhall Bridge Road
Victoria
London SW1V 1EJ**

Investment Bankers: **Central Finance Board of the Methodist Church
Trustees for Methodist Church Purposes**

Aims and Objectives

The charity's objective is to act as a resource provider within the area around Westminster for the Methodist Church:

It aims to be a vital Christian presence in the heart of London.

The purposes of the Methodist Church are, and shall be deemed to have been, since the Date of Union, the advancement of:

1. The Christian faith in accordance with the doctrinal standards and discipline of The Methodist Church;
2. Any charitable purpose for the time being of any Connexional, District, Circuit, local or other organisation of The Methodist Church;
3. Any charitable purpose for the time being of any society or institution subsidiary or ancillary to The Methodist Church; and
4. Any purpose for the time being of any charity being a charity subsidiary or ancillary to The Methodist Church.

Public Benefit

We confirm that the trustees have had regard to the Charity Commission's guidance on public benefit.

Structure, Governance and Management

The governing document for the Methodist Church of Great Britain is the Deed of Union (1932) and Methodist Church Act (1976).

Detailed governance arrangements are outlined within the Constitutional Practice and Discipline of the Methodist Church by order of the annual Conference (CPD).

Day to day management of the Circuit is undertaken by the Circuit Stewards and Ministerial Team with input from the Circuit Leadership team. Trusteeship is exercised by the elected members of the Circuit Meeting.

Trustee Training

Trustees are pointed to a range of guidance produced by The Methodist Connexion to support the effective running of the church and the role of Trustees.

Related Parties

The Circuit is part of the Methodist Church of Great Britain. It consequently locates itself in both its polity and structure. In structural terms the Westminster Circuit is one of some 35 circuits (groupings of local churches) making up the London Methodist District. In terms of Polity and Constitution it, like all Methodist circuits, is accountable to the annual Methodist Conference.

Somewhat unusually, the Westminster Circuit consists of only one local society (church): Methodist Central Hall Westminster, which consequently is constituted so that wherever possible, local church and local circuit matters share the same constitution (by applying annually Methodist Standing Order 511).

Another unusual aspect of the Circuit/Church is the fact that its Trustees *of the Building* are appointed annually by the annual Conference of the Methodist Church of Great Britain, rather than, more commonly, the circuit meeting. A third related party, in addition to the Circuit and the Trustees is Central Hall Westminster Ltd, a not-for-profit company formed in 1999 to run an events and conference business using the large and prestigious premises in central London.

Regular meetings of each of these three entities take place, with the Superintendent and Deputy Superintendent ministers being members of each of the three, thereby having a strategic overview of the total ministry of the Circuit and its related parties.

Risk Management

The major risks associated with the life and ministry of the Circuit, located in Methodist Central Hall Westminster, are identified and recorded by the Trustees, with professional advice taken as required. An annual review process is undertaken and recorded. In terms of financial governance, income and expenditure are regularly and routinely monitored, and are compared with the approved annual budget on at least a quarterly basis to detect trends as part of the risk management process to avoid unforeseen calls on reserves.

We note the following items, all of which are noted on the Risk Register.

- An annual grant to the Church, which is one of the main sources of funding for the Circuit is given by the Trustees. This is made possible by profits made by Central Hall Westminster Ltd. Any 'lean years' – and particularly several lean years – would affect the ability of the Trustees to award the grant.
- The impact of the COVID-19 pandemic on the operations of Central Hall Westminster Ltd has been immense. The building's closure and consequent hibernation of the business has meant that profits which would have been tithed to the Trustees have dried up, thus impacting their ability to provide the same level of grant to the Church, as with previous years.
- The as yet unknown plan relating to the 'decanting' of the House of Commons and House of Lords from the Palace of Westminster. Methodist Central Hall Westminster is, because of its proximity, one of a handful of buildings currently in conversation with 'Black Rod' about what are termed "business continuity talks".
- The ever-present risk of terror attacks and security breaches, given the location of the church. For the past four years the Metropolitan Police have estimated the risk of such as 'severe' and give regular security briefings to Circuit officials as to office holders of other large buildings in and around Parliament Square.
- The damage to reputation, given the high usage of the premises by very many clients.

- Safeguarding risks, exacerbated by the very high numbers of people using the building each week. In line with Methodist rulings, safeguarding procedures have, and continue to be improved and overhauled.

Safeguarding

Every person has a value and dignity which comes directly from the creation of male and female in God's own image and likeness. Christians see this potential as fulfilled by God's re-creation of us in Christ. Among other things this implies a duty to value all people as bearing the image of God and therefore to protect them from harm.

Methodist Connexional practice outlines commitment to the following principles:

1. The care and nurture of, and respectful pastoral ministry with all children, young people and adults.
2. The safeguarding and protection of all children, young people and adults when they are vulnerable.
3. The establishing of safe, caring communities which provide a loving environment where there is informed vigilance as to the dangers of abuse.
4. We will carefully select and train all those with any responsibility within the Church, in line with Safer Recruitment principles, including the use of criminal records disclosures and registration with the relevant vetting and barring schemes.
5. We will respond without delay to every complaint made which suggests that an adult, child or young person may have been harmed, cooperating with the police and local authority in any investigation.
6. We will seek to work with anyone who has suffered abuse, developing with them an appropriate ministry of informed pastoral care.
7. We will seek to challenge any abuse of power, especially by anyone in a position of trust.
8. We will seek to offer pastoral care and support, including supervision and referral to the proper authorities, to any member of our church community known to have offended against a child, young person or vulnerable adult.
9. In all these principles we will follow legislation, guidance and recognised good practice.

London Mission (Westminster) Circuit commits itself to: -

1. Ensuring the implementation of Connexional Safeguarding Policy; government legislation, guidance and safe practice in the circuit and in the churches.
2. The provision of support, advice and training for lay and ordained people that will ensure people are clear and confident about their roles and responsibilities in safeguarding and promoting the welfare of children and adults who may be vulnerable.

The Safeguarding Policy is approved annually by the Circuit Meeting and revised in line with guidelines and directives from the Methodist Church of Great Britain.

Reserves Policy

The policy is for the Circuit itself to hold minimal free reserves, as it is able to rely on the reserves held within its one church. The aim, therefore, is for the Church to hold a designated contingency fund at a level, which can sustain six months' worth of average expenditure for both Church and Circuit. The Contingency Fund has not been increased in 2021/22 and so remains at £148k, which is equivalent to approximately six months' average expenditure. Despite the limitations on church activities in 2020/21 due to Covid-19 restrictions, the Church was able to generate a surplus and so no reduction in contingency was needed.

However, the continuing impact of the pandemic means that the reduced levels of grant from the Conference Property Trustees will continue into 2022/23 and a significant deficit is budgeted for in 2022/23, which will reduce the level of contingency quite considerably. The Church Council will continue to monitor this and endeavour to take measures to maintain reserves at a healthy level.



Signed:

Rev'd Tony Miles (Chair of Trustees)

Date: 19 March 2023

London Mission (Westminster) Circuit 35/03
Statement of Financial Activities (SOFA) for the Year Ended 31 August 2022

	Notes	General Fund (Unrestricted)	Designated Funds	Restricted Funds	Endowment (Restricted)	2021/22 Totals		2020/21 Totals
Income and Endowments from:		£	£	£		£		£
Donations and Legacies Income		0	0	0	0	0		0
Bank Interest		1,287	0	0	0	1,287		869
District Advance Fund Grant		0	0	0	0	0		0
Assessments Church & Trustees to Circuit		194,023	0	0	0	194,023		193,485
Lettings (Manse Rental Income)	10	19,301	0	0		19,301		19,202
Total Income		214,611	0	0	0	214,611		213,556
Expenditure								
Stipends, Salaries and Associated Costs		129,120	0	0	0	129,120		116,760
District Assessment		43,716	0	0	0	43,716		43,720
Travel Expenses		6,275	0	0	0	6,275		2,000
Ministerial Training		1,534	0	0	0	1,534		438
Insurance, Utilities, etc.	11	22,063	0	0	0	22,063		22,360
Maintenance on Manses	12	2,189	2,674	0	0	4,863		8,056
Removal Costs		0	0	0	0	0		600
Media Chaplaincy Costs		0	0	58	0	58		0
Other Expenditure								
Administration, Staff & Copying etc.	13	7,059	0	0	0	7,059		4,815
Independent Examiner Fee		1,680	0	0	0	1,680		1,680
Professional fees		975	0	0	0	975		999
Total Expenditure		214,611	2,674	58	0	217,343		201,428
Net Income / (Expenditure)		0	(2,674)	(58)	0	(2,732)		12,128
Transfer between Funds & General Account		(8,000)	8,000	0	0	0		0
Total Funds brought forward		1,942,756	330,352	58	0	2,273,166		2,259,402
Correction for Prior Year			0			0		1,636
Total funds carried forward at end of year		1,934,756	335,678	0	0	2,270,434		2,273,166

London Mission (Westminster) Circuit 35/03

Balance Sheet as at 31 August 2022

	Notes	General Fund (Unrestricted)	Designated Funds	Restricted Funds	Endowment (Restricted)	2021/22 Totals	2020/21 Totals
Fixed Assets		£	£	£	£	£	£
Manses etc.	14	1,932,713	0	0	0	1,932,713	1,932,713
Total Fixed Assets		1,932,713	0	0	0	1,932,713	1,932,713
Current Assets							
Debtors and prepayments	15	36,457	0	0	0	36,457	54,727
TMCP Deposit Account	16	0	250,144	0	0	250,144	249,684
CFB Deposit	16	0	23,554	0	0	23,554	14,156
Cash at bank and in hand	17	(31,268)	61,980		0	30,712	29,694
Total current assets		5,189	335,678	0	0	340,867	348,261
Creditors (due in under 1 year) & unused funds	18	(3,146)	0	0	0	(3,146)	(7,808)
Net current assets		2,043	335,678	0	0	337,721	340,453
Total assets less current liabilities		1,934,756	335,678	0	0	2,270,434	2,273,166
Loans and creditors due after 1 year		0	0	0	0	0	0
Net assets		1,934,756	335,678	0	0	2,270,434	2,273,166
Funds of the Circuit							
General Fund (Unrestricted)		1,934,756	0	0	0	1,934,756	1,942,756
Other Funds (Restricted)		0	335,678	0	0	335,678	330,410
Total funds		1,934,756	335,678	0	0	2,270,434	2,273,166

I confirm that these accrual-based accounts for the year ended 31 August 2022 have been prepared from the records of the Circuit and that they include all funds under the control of the Circuit Meeting.

Signed:


Ama Ackah-Yensu (Treasurer)

Date: 19 March 2023

I confirm that the annual report and accounts for the year ended 31 August 2022 were, presented to the Circuit Meeting at its meeting on 19 March 2023 and were approved.

Signed:


Revd Tony Miles (Chair of the Circuit Meeting)

Date: 19 March 2023

London Mission (Westminster) Circuit 35/03
Statement of Financial Activities (SOFA) for the Year Ended 31 August 2021

	Notes	General Fund (Unrestricted)	Designated Funds	Restricted Funds	Endowment (Restricted)	2020/21 Totals	2019/20 Totals
		£	£	£	£	£	£
Income and Endowments from:							
Donations and Legacies Income	4	0	0	0	0	0	0
Bank Interest	5	30	839	0	0	869	347
Assessments Church & Trustees to Circuit including Repayment of Loan		193,485	0	0	0	193,485	211,239
Lettings (Manse Rental Income)	10	19,202	0	0	0	19,202	4,660
Total Income		212,717	839	0	0	213,556	216,246
Expenditure							
Stipends, Salaries and Associated Costs		116,760	0	0	0	116,760	115,175
District Assessment		43,720	0	0	0	43,720	39,884
Travel Expenses		2,000	0	0	0	2,000	5,027
Ministerial Training		438	0	0	0	438	357
Insurance, Utilities, etc.	11	22,360	0	0	0	22,360	21,064
Maintenance on Manses	12	5,201	2,855	0	0	8,056	42,398
Removal Costs		0	600	0	0	600	3,898
Other Expenditure							
Administration, Staff & Copying etc.	13	4,815	0	0	0	4,815	9,443
Independent Examiner Fee		1,680	0	0	0	1,680	2,570
Professional fees		500	499	0	0	999	534
Total Expenditure		197,474	3,954	0	0	201,428	240,373
Net Income / (Expenditure)		15,243	(3,115)	0	0	12,128	(24,127)
Transfer between Funds & General Account		(15,200)	15,200	0	0	0	0
Total Funds brought forward		1,942,713	316,631	58	0	2,259,402	2,283,529
Correction for Prior Year		0	1,636	0	0	1,636	0
Total funds carried forward at end of year		1,942,756	330,352	58	0	2,273,166	2,259,402

London Mission (Westminster) Circuit 35/03
Balance Sheet as at 31 August 2021

	Notes	General Fund (Unrestricted)	Designated Funds	Restricted Funds	Endowment (Restricted)	2020/21 Totals	2019/20 Totals
Fixed Assets		£	£	£	£	£	£
Manses etc.	14	1,932,713	0	0	0	1,932,713	1,932,713
Total Fixed Assets		1,932,713	0	0	0	1,932,713	1,932,713
Current Assets							
Debtors and prepayments	15	54,727	0	0	0	54,727	55,222
TMCP Deposit Account		0	249,684	0	0	249,684	247,707
CFB Deposit	16	0	14,098	58	0	14,156	32,842
Cash at bank and in hand	17	(36,876)	66,570	0	0	29,694	1,267
Total current assets		17,851	330,352	58	0	348,261	337,038
Creditors (due in under 1 year) & unused funds	18	(7,808)	0	0	0	(7,808)	(10,352)
Net current assets		10,043	330,352	58	0	340,453	326,686
Total assets less current liabilities		1, 942,756	330,352	58	0	2,273,166	2,259,402
Loans and creditors due after 1 year		0	0	0	0	0	0
Net assets		1,942,756	330,352	58	0	2,273,166	2,259,402
Funds of the Circuit							
General Fund (Unrestricted)		1,942,756	0	0	0	1,942,756	1,942,713
Other Funds (Designated and Restricted)		0	330,352	58	0	330,410	316,689
Total funds		1,942,756	330,352	58	0	2,273,166	2,259,402

Notes to the Financial Statements for the year ended 31 August 2022

Basis of accounting

These financial statements are prepared on a going concern basis, under the historical cost Convention.

The financial statements have been prepared in accordance with the Financial Reporting Standard applicable in the UK and Republic of Ireland (FRS 102). The Charity is a public benefit entity for the purposes of FRS 102 and therefore the Charity also prepared its financial statements in accordance with the Statement of Recommended Practice applicable to charities preparing their accounts in accordance with the Financial Reporting Standard applicable in the UK and Republic of Ireland (The FRS 102 Charities SORP) and the Charities Act 2011.

The financial statements are prepared in sterling, which is the functional currency of the charity. Monetary amounts in these financial statements are rounded to the nearest pound.

The principal accounting policies adopted in the preparation of the financial statements are set out below.

1. Going Concern

After making reasonable enquiries the Trustees have a reasonable expectation that the Charity has adequate resources to continue in operational existence for the foreseeable future and do not consider there to be any threat to the going concern status. Therefore, the Trustees continue to adopt the going concern basis in preparing the financial statements and confirm there are no material uncertainties at the date of the approval of these financial statements.

2. Funds

The funds held constitute: General Funds held for any purpose of the Circuit, which are unrestricted, and restricted funds, which are held for a narrower purpose including those for internal organisations. Details of each material fund are disclosed in the notes to the Accounts.

3. Accounting Policies

Basis

These accounts have been prepared under the historical cost convention, except that investments are shown at their market value at the end of the year, on the accruals basis to show a true and fair view of the Circuit's financial position and activities.

Income

Income is included in the Statement of Financial Activities (SOFA) when the Circuit becomes entitled to the funds, the receipt is probable and the amount can be measured reliably.

Expenditure

This is recognised when a liability is incurred, or a constructive obligation arises, that results in the payment being unavoidable. Liabilities are recognised as soon as an

outflow of economic benefit is considered more likely than not under the legal or constructive obligation committing the Circuit to pay out resources.

Cash and Cash Equivalents

Cash and cash equivalents include cash in hand, deposits held at call with banks, other short-term liquid investments with original maturities of three months or less, and bank overdrafts. Bank overdrafts are shown within borrowings in current liabilities.

Grants

Grants made by the Circuit from its own funds are recognised in full at the time of agreement or when the Circuit accepts that there is a legal or operational obligation to make the payment. When the grant is recurrent over more than one year the balance payable in future years is treated as a provision for future commitments in the Balance Sheet against the appropriate fund, the provision being released in future years as instalments are paid in accordance with the originally agreed terms.

VAT

Since the Circuit is not VAT registered, all input VAT is charged with the expenses to which it refers.

Tangible fixed assets for use by the Circuit

These are capitalised if they can be used for more than one year, and individually cost at least £1,000.

The freehold property comprises the Circuit's manses and is shown in the accounts at 2014 deemed values, with the exception of the Shirley manse, which is shown at the purchase value in 2016.

At the time of valuation, purchase and disposal, the value of the properties was not split between land and buildings. However, based on an estimate of 25% land and 75% buildings, the total land value at 31 August 2022 would be £483,179 and the total building value would be £1,449,534. No depreciation is provided on the buildings because the trustees consider the current residual fair value of the manse buildings (on the assumption that it had reached the end of its useful economic life by the year-end) to be not less than its current value.

Investment Properties

Investment properties - no property is currently deemed not to be held for the long-term purposes of the charity.

Investments

Investments are valued in the balance sheet at market value at the year-end. Investment income is included in the accounts when receivable and any gains or losses on revaluation at the year-end are shown in the SOFA.

Financial instruments

Basic financial instruments are measured at amortised cost.

Debtors and creditors

Debtors and creditors receivable or payable within one year of the reporting date are carried at their transaction price and subsequently measured at amortised cost less any impairment.

Critical accounting estimates and areas of judgement

In preparing financial statements it is necessary to make certain judgements, estimates and assumptions that affect the amounts recognised in the financial statements. There are no judgements and estimates considered by the Trustees to have a significant effect on amounts recognised in the financial statements.

4. Donations and legacies	Unrestricted	Restricted	2022 Total	2021 Total
	£	£	£	£
Legacies	0	0	0	0
Total	0	0	0	0
5. Investment income				
Central Finance Board	1,287	0	1,287	869
Other	0	0	0	0
Total	1,287	0	1,287	869

6. Payment to Trustees

None of the Trustees, or persons connected with them, received any remuneration or other benefits from the Church or any connected organisation as a result of their office during the year ended 31 August 2022.

	2021/22	2020/21
Number of trustees who were paid expenses	5	5
	£	£
Total amount paid	6,815	2,157

Nature of expenses claimed: Car mileage, public transport, hospitality and miscellaneous. These expenses have been incurred by the trustees in the course of fulfilling their pastoral responsibilities.

7. Independent Examiner's Fees

	2021/22	2020/21
	£	£
Fees for reporting on the accounts	1,680	1,680
Other fees (for advice, accountancy services etc)	0	0
Total	1,680	1,680

8. Paid Employees

Staff costs during the year were as below: -

	2021/22	2020/21
	£	£
Gross wages, salaries and benefits in kind	3,416	3,115
Employer's National Insurance	237	259
Pension costs	244	343
Total Staff Costs	3,897	3,717
Average number of full-time equivalent employees in the year	0.2	0.2

The charity considers that the key management personnel comprise the Trustees. There was no remuneration paid to the Trustees during 2021/ 22.

9 Fixed Assets

Cost or valuation	Residential Land	Manses	Total
	£	£	£
Balance brought forward	483,179	1,449,534	1,932,713
Balance carried forward	483,179	1,449,534	1,932,713
Accumulated depreciation	0	0	0
Net Book Value brought forward	483,179	1,449,534	1,932,713
Net Book Value carried forward	483,179	1,449,534	1,932,713

9a Investments

No other investments are held by the Circuit.

London Mission (Westminster) Circuit 35 / 03

NOTES TO THE FINANCIAL STATEMENTS

	2021/22		2020/21	
INCOME	£	£	£	£
<i>Note 10 Rental Income</i>				
Pond Green	19,301		19,202	
		19,301		19,202
 EXPENDITURE	 £	 £	 £	 £
<i>Note 11 - Insurance, Utilities etc.</i>				
Manse expenditure				
Insurance	2,012		1,603	
Telephone (incl mobiles & broadband)	1,434		1,184	
Water Rates	1,185		1,936	
Service Charges & Utility Maintenance				
Contracts	9,720		9,743	
Council Tax	5,228		4,976	
Utilities	2,485		2,919	
		<u>22,063</u>		<u>22,360</u>
 <i>Note 12 - Repairs and Maintenance</i>				
Manse repairs & maintenance	2,189		5,201	
		<u>2,189</u>		<u>5,201</u>
 <i>Note 13 - Office Staff &Supplies</i>				
Staff Costs	5,400		4,451	
Photocopying	143		(220)	
Computer supplies & software	1,516		584	
		<u>7,059</u>		<u>4,815</u>

London Mission (Westminster) Circuit 35 / 03

	2021/22		2020/21	
	£	£	£	£
BALANCE SHEET NOTES				
Note 14 Property Revaluation (Valuations Made 2014)	Property Value	Circuit Value		Circuit Value
	£	£		£
6 Exbury House (25% owned by Circuit)	550,000	137,500		137,500
4 Cotton Row (50.25% owned by Circuit)	1,485,000	746,213		746,213
16 Pond Green (100% Owned by Circuit)	400,000	400,000		400,000
108A Shirley Avenue (100% Owned by Circuit)	649,000	649,000		649,000
TOTAL VALUE		1,932,713		1,932,713
Prior Valuation		1,142,685		1,142,685
Revaluation Reserve		790,028		790,028
 Note 15 -Prepayments				
Stipends	10,247		9,750	
Manse Expenses	4,748		4,051	
Photocopying	0		586	
Accrued Income				
Donations from Church for General Fund	21,462		38,619	
Owed by Church				
Church Expenses Paid by Circuit	0		1,721	
		<u>36,457</u>		<u>54,727</u>
 Note 16 - Central Finance Board				
Restricted Funds	0		58	
Designated Funds	23,554		14,098	
General Fund	0		0	
		<u>23,554</u>		<u>14,156</u>
 Note 16 - TMCP				
Manse Sale and Purchase Fund	248,579		248,579	
Other Designated Funds	1,565		1,105	
		<u>250,144</u>		<u>249,684</u>
 Note 17 - Cash at Bank& In Hand				
General Fund	(31,268)		(36,876)	
Restricted Funds	61,980		66,570	
		<u>30,712</u>		<u>29,694</u>
 BALANCE SHEET NOTES				
Note 18 - Creditors & Accruals				
Ministers Travel & Accommodation	384		267	
Manse Costs	332		2,460	
Photocopying	0		964	
Independent Examiners Fee	1,680		1,680	
Administration Staff Costs	750		2,198	
Ministerial Training	0		238	
		3,146		7,808
Designated Funds	0		0	
		<u>0</u>		<u>0</u>
		<u>3,146</u>		<u>7,808</u>

London Mission (Westminster) Circuit 35 / 03

CIRCUIT FUNDS	Balance B/Fwd 01/09/21	Income	Expenditure	Transfer Between Funds	Balance C/Fwd 31/08/22
FUNDS	£	£	£	£	£
Restricted					
Media Chaplaincy	58	0	(58)	0	0
TOTAL RESTRICTED FUNDS	58	0	(58)	0	0
Designated					
Removals Fund	6,674	0	0		6,674
Manse Maintenance Fund	75,099	0	(2,674)	8,000	80,425
Manse Replacement Fund	248,579	0	0	0	248,579
Total Designated Funds	330,352	0	(2,674)	8,000	335,678
TOTAL RESTRICTED & DESIGNATED FUNDS	330,410	0	(2,732)	8,000	335,678
GENERAL FUND	1,942,756	214,611	(214,611)	(8,000)	1,934,756
TOTAL	2,273,166	214,611	(217,342)	0	2,270,434

The Balance for Restricted and Designated Funds have increased to £335,678 from £330,410 in 2020/21, due to a transfer of £8,000 from General Funds into the Manse Maintenance Fund.

London Mission (Westminster) Circuit 35 / 03

Circuit Trustees as at 31 August 2022

The following served as trustees during the year and/or were trustees at the date of signing the accounts.

Revd. Tony Miles	Ollie McEwen
Revd. Lansford Penn-Timity	Joe Awotwi
Deacon Alison McMillan	Tony Ackah-Yensu
Revd. Gordon Newton	Alison Bryan
Daniella Fetuga-Joensuu	Judith Mitchell
Helen Tudor	Philippa Muir
Wesley Gibbs	Christina Asare Owusu
Esther Buckman	Charlotte Rankin
Emmanuel Asante	Sarita Lightfoot-Taylor
Abdul Bah	Esther Thomas
Michael Davies	Mark Williamson
Regina Boye	Jacob Baiden
Denzil Cummings-John	Kate Jones
Comfort Golightly	Seth Kofi Otoo
Joseph Adjei	Grace Sangmuah
Shirley Bernisto	Christina Fashola
Grace Kermah	Chika Unaka
Sabrina Malcolm	Aretha Solanke
Ama Ackah-Yensu	Charles Bushell
Jocelyn Boafo	MS Kim
John Philips	Omotayo Roberts
Dinah Longdon	Marko Joensuu

Independent examiner's report to the trustees of London Mission (Westminster) Circuit

Independent examiner's report to the Trustees of Methodist Central Hall Westminster – London Mission (Westminster) Circuit No. 35/03

I report to the charity Trustees on my examination of the accounts of the charity for the year ended 31 August 2022.

Responsibilities and basis of report

As the Trustees of the Charity you are responsible for the preparation of the accounts in accordance with the requirements of the Charities Act 2011 ('the Act').

I report in respect of my examination of the charity's accounts carried out under section 145 of the 2011 Act and in carrying out my examination I have followed all the applicable Directions given by the Charity Commission under section 145(5)(b) of the Act.

Independent examiner's statement

I confirm that I am qualified to undertake the examination because I am a member of the Institute of Chartered Accountants in England and Wales, which is one of the listed bodies.

I have completed my examination. I confirm that no material matters have come to my attention in connection with my examination giving me cause to believe that in any material respect:

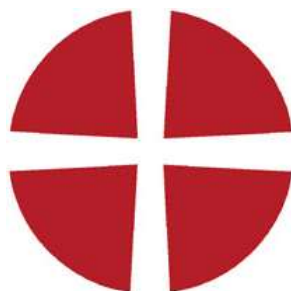
- ♦ accounting records were not kept in respect of the charity as required by section 130 of the Act; or
- ♦ the accounts do not accord with those records; or
- ♦ the accounts do not comply with the applicable requirements concerning the form and content of accounts set out in the Charities (Accounts and Reports) Regulations 2008 other than any requirement that the accounts give a 'true and fair view' which is not a matter considered as part of an independent examination.

I have no concerns and have come across no other matters in connection with the examination to which attention should be drawn in this report in order to enable a proper understanding of the accounts to be reached.



Katharine Patel ACA
Buzzacott LLP
Chartered Accountants
130 Wood Street
London EC2V 6DL

23 March 2023



**THE METHODIST CHURCH
STANDARD FORM OF ACCOUNTS
ACCRUALS BASIS**

For the year ended 31 August 2022

**METHODIST CENTRAL HALL
WESTMINSTER**

Registered Charity No 1145076

SUPERINTENDENT MINISTER
Revd Tony Miles

CHURCH STEWARDS

Esther Buckman
Emmanuel Asante
Abdul Bah
Michael Davies
Regina Boye
Denzil Cummings-John
Comfort Golightly
Shirley Bernisto
Grace Kermah
Joseph Adjei
Sabrina Malcolm

CHURCH TREASURER

Ama Ackah-Yensu

METHODIST CENTRAL HALL WESTMINSTER CHURCH TRUSTEES' ANNUAL REPORT

Introduction

This Annual Report gives an account of the mission and ministry of Methodist Church Central Hall Westminster. It represents considerable commitment on the part of its members, who both gather for worship and learning, and disperse in witness, being involved in a variety of means of service.

Aims and Organisation

Our mission is to be a vital Christian presence in the heart of London. Our vision statement declared on the order of worship each week is: "Methodist Central Hall Westminster – a global Christian family following Jesus at the heart of London."

Review of the Year – Regrouping and Rebuilding

With the restrictions of the Covid Pandemic eventually being lifted, we have worked hard to gather our in-person congregation again and this has not been easy. Many have been nervous about travelling into London. There has been the added obstacle of an unprecedented number of events in Westminster (marathons, bike rides, and filming etc), and we have also been hindered by the Congestion Charge. Nevertheless, our community has gradually been regrouping. The challenge has been to rebuild a church that is relevant to a world transformed by a virus and other global issues. We have over 60% of our regular worshippers returning to worship on a Sunday morning, with Special services like Easter seeing larger numbers (80%). We are hugely grateful to the entire staff team and those who are lay volunteers, for their commitment, prayer, and faithfulness. At times, there have been few around to share the load, but it's good to see more people stepping up to help us rise to new opportunities. It has been wonderful to see our Vision Statement becoming a reality.

Midweek Lunchtime Services

These resumed last September and got off to a slow start, due to very few office workers being back. However, we have grown a new nucleus of our own members who attend, we have welcomed almost 30 visitors and tourists and are starting to see a few office workers occasionally. There was a good attendance at a special service for the Platinum Jubilee, attended by some from the Business Centre.

Confirmation and Reception Into Membership, Baptisms and 1st Anniversary Services

Despite the challenges above, we were delighted to Confirm 6 new Church Members and receive 5 more by way of transfer from other churches, with more transfers expected soon. It is encouraging that some new members are joining us because of our online



ministry. Due to our inability to hold special services during the pandemic, we have had a significant number of baptisms and first anniversary services to mark the death of loved ones.

Online Services and Meetings

Our live-streamed services continue to average 1.3K – 1.4K views each week. We are conscious that each view may represent multiple people as we know a lot of couples and families are viewing. We have overcome several technical challenges and we are still planning to raise funds to invest in new equipment for the Chapel and Great Hall. A church member has been trained and engaged as a freelance technician for our online services, enabling us to reduce costs.



Fun and Fellowship Weekend

Members of the ministerial team and **45 church members, aged between 5 and 90 years, went away to The Friars – Aylesford Priory, Kent for a weekend (June 10th-12th).** The theme was 'Wellbeing and the Kingdom of God' and was led by a former Deacon at MCHW. It was a time of great blessing and encouragement.

Healing Ministry

Healing Services are rebuilding and have been well-received. Our annual healing conference returned to the Great Hall this year, after the 2020 conference was cancelled and the 2021 conference went out on-line.

Attendees were down on pre-covid times, but we had c.180 on the day. The worship was inspirational and the key speaker, Carolyn Lawrence's talks were extremely well received, with many commenting positively on the day and in subsequent emails. The leaders and combined prayer teams from MCHW and Premier Lifeline were kept extremely busy, and we had queues of people waiting in the aisles for anointing and individual prayer

The theme '**Transformation:- from the inside out**' particularly resonated with the huge need for healing for minds and hearts after the two years of fear and stress from covid.



Sanctuary

Sanctuary is the young adult congregation at MCHW, and also a fresh expression of church trying to reach out to people in their 20s and 30s across London. It's a group of people following Jesus so they can experience life in all its fullness, and be a part of turning London upside down. They do this by exploring spirituality, justice, and leadership. There are about 30 people in the community. In the year 2021/22 Sanctuary has developed:

- A corporate rhythm of life for community members.
- An intentional discipleship tool based on monthly coaching conversations.
- Four justice groups, looking at how we can

make the world a better place by campaigning for financial justice, racial justice, climate justice, and helping the homeless. On 30th June, Sanctuary held a special leadership training evening for social entrepreneurs and charity leaders and church volunteers, called [Building A Dream Team](#).

Ecumenical Events

We continue to maintain good relations with Westminster Abbey, Westminster Cathedral, and other churches in Westminster. We work with and support The Passage (helping homeless people in Westminster). Moreover, despite MCHW reducing the grant to the St Vincent's Family Project (SVFP) that is hosted on our premises, the work of the project has continued with the help of income from other sources. Our Superintendent was invited to participate in a number of national events at the Abbey, including the Commonwealth Service and a Service of Thanksgiving for the life of His Royal Highness The Prince Philip, Duke of Edinburgh. He also preached at St. Margaret's Church at the 5th Anniversary of the terror attacks on Westminster Bridge and New Palace Yard. This service was well attended by the families of the victims and the Prime Minister.

Local Preaching

We now have 11 Local Preachers. nine Fully Accredited, one On Trial, and another On Note. During the year we had a new Church Member by transfer, who is also Fully Accredited. Our preachers take part in our own services as well as preaching in various London Circuits.

Vice President of Conference

We are very proud to report that our church member, **Anthony Boateng, was inducted as Vice President of Conference** on Saturday 25th June 2022. We give thanks to God and continue to support him with our prayers during a busy and demanding year for him.

Cultural Groups

The Cultural Fellowship groups are in good spirits and have been overseen by Revd Lansford Penn-Timothy. This has fostered togetherness and collaboration. Communication among members through WhatsApp and other forums has significantly

improved. Through these groups, we have been able to celebrate significant moments in their various cultures. There have been pockets of challenges here and there on the Food Policy but in general, it appears to be working well. A Farewell Service for Revd Dr Martyn Atkins, which had been delayed because of the Pandemic, was finally held on 8th May 2022. It was followed by a successful reception that gave the opportunity for the various groups to serve food in line with the Food Policy that was initiated whilst he was in office.

Visitor Services and Bookstall

With the assistance of Paul Moynihan (our part-time archivist) and Frank Waller, who leads the volunteers, our Visitor Services Centre and Bookstall have been restructured and limited tours resumed. We have hosted visitors from the USA, Korea, and others from across the world. We hosted 23 ministers from the Methodist Church overseas, who were in the UK for the Methodist Conference 2022.

All in all, the year has been challenging and yet rewarding – an opportunity for us to experience God's grace in a very special way.

Our Superintendent Minister closes with words from St. Paul, ***'Therefore encourage one another and build each other up, just as in fact you are doing.'***

(1 Thessalonians 5:11)

May God richly bless us all as we share in his mission and further the work of the kingdom.

Plans for 2022/23

Financial plans have been prepared on the basis that staff levels within the Church will remain the same. With the grant from the Conference Property Trustees forecast to remain at 50% of the 2019/20 (pre Covid-19) levels and a reduced level of giving due to the cost-of-living crisis, we are initially budgeting for a deficit of £136.9k in 2022/23, which will result in all free reserves and the Contingency being used. However the Church Trustees have sought and received assurances from the Conference Property Trustees of increased levels of grant, with the situation being kept under constant review.

The membership are also considering prayerfully how to increase their giving in order to move forward with the Kingdom Agenda. We continue to trust in God, who has faithfully brought us thus far!

Financial Review

With Covid-19 restrictions lifted during the year, church activities started to resume, but at a very slow pace. The grant from the Managing Trustees of the building was maintained at 50% of pre-pandemic levels. Coupled with the ending of support from the Government Furlough Scheme, we had budgeted for a deficit in 2021/22.

The Church finished the year with a deficit of £93,544 (£33,769 surplus in 2020/21) and therefore decreased its funds from £394,928 in 2020/21 to £301,384 in 2021/22. The decrease of £76,317 in the General Fund and £17,227 in Restricted and Designated Funds, resulted in a negative balance of funds in the General Fund of £14,131 and a balance of £315,515 in Restricted and Designated.

Church income in total was £389,239, which is below the £500,000 threshold requiring a Statement of Cash Flows to be prepared and so this has not been included in the 2021/22 Annual Accounts.

The statement of accounts for the year ended 31 August 2022 is attached.

Income

General Fund income decreased to £349,010 from £366,790 in 2020/21. The main movements are shown below:

- Furlough Income in 2020/21 was £33.3k and zero in 2021/22, due to the scheme ceasing
- However, the re-opening of the church for services and events meant that there were some increases in income.
 - Increase in Giving of £5k mainly due to the increase in Church Anniversary donations.
 - Increase in Special Events income of £10.7k, but this was offset by an increase in Special Events expenditure of £34.8k

Income received in Restricted and Designated Funds was £40.2k – a decrease of £6.3k from 2020/21, mainly for the following reasons:

- Decrease of £16k in giving to the fund for Live Streaming of Services. As local churches have re-opened the numbers viewing have decreased causing a reduction in donations.
- Increase in Special Offerings for Other Organisations of £6k, as special events and services have been held.
- Marginal increases in giving to Fellowship Groups and Flower & Hymn Sheet Funds.

Expenditure

General Fund spending has increased by £71.8k to £404.8k (2020/21 £333.0k). There were some key variances within these total figures

- Admin and Lay Ministry Salaries increased by £6.4k due to staff returning to full pay after having been on Covid Furlough in 2020/21. A backlog of PHI Contributions (income replacement insurance) for 2020/21 was also made in 2021/22.
- Office Supplies and Equipment increased by £3.2k mainly due to additional postage as mailings to membership resumed.
- Church Groups expenditure increased by £2.7k due to the resumption of in-person gatherings.
- Special Events increased by £34.8k as events such as the Carol Service, Fun and Fellowship Weekend, Daffodil Day and Healing Conference could again take place in 2021/22.
- The Music Account expenditure increased by £22k due to increases in salaries for the same reasons as outlined above. More significantly, the return of in-person services led to an increase in fees paid to professional musicians.
- Grants and Donations increased by £2.9k due to an increase in donations made to the St Vincent's Family Project (SVFP), but partially offset by the cessation of the donation to The Gate ceasing.

Designated and Restricted Fund expenditure increased by £29.4k to £78.0k (2020/21 £48.6). The key movements are detailed below:

- No distribution of Tithe Grants was made in 2020/21, but in 2021/22 £40k of was distributed.
- £6.9k was spent from the AVA/Server Replacement Fund to replace computer equipment.
- Expenditure on Live Streaming decreased by £26k through reduced reliance on technical consultants as in-house experience and skill grew. The training up of a church member to take on the technician role also resulted in savings.

Total Funds for the Church have decreased to £301,384 (2020/21 £394,928) with negative funds of £14,131 (2020/21 ££62,186) in the General Fund and £315,515 in Restricted and Designated Funds (2019/20 £332,742).

In 2021/22, £20.6k has been transferred from Church General Funds to Designated and Restricted Funds, being the allocation to the Tithe Fund.

The Contingency Fund stands unchanged at £148k, which represents approximately six months' worth of average essential expenditure (including payments to the Circuit). There was no increase in the Fund in 2021/22. At the start of the year, we expected that Church income may decrease to the extent that some contingency may need to be used to meet ongoing expenditure, but by the grace of God, we have not had to do so. The Contingency Fund is included within the Designated Total. The Budget for 2022/23 however, has a significant deficit, which will mean that the Contingency will be reduced.

We are truly thankful for God's grace and favour, which has sustained the Church, for the Managing Trustees and the Connexion, the staff of Central Hall Westminster Ltd, our members and regular worshippers (new and not so new) and supporters from all over whose prayers, generosity and support have kept us throughout this most unusual year. To God be the glory! We look forward to exciting times ahead.

METHODIST CENTRAL HALL WESTMINSTER CHURCH

Trustee's Annual Report on Finance and Governance

The Charity's annual report and accounts for the year ended 31 August 2021 have been prepared in accordance with the Charities Act 2011 and the Statement of Recommended Practice 2015 applicable to charities preparing their accounts in accordance with the Financial Reporting Standard in the UK and Republic of Ireland issued in July 2014.

Full Name of Church: **Methodist Central Hall Westminster**

Charity Registration Number: **1145076**

Date of registration: **15 December 2011**

Main communication address: **Methodist Central Hall, Storey's Gate,
Westminster, London SW1H 9NH**

The members of the Methodist Central Hall Westminster Church Council are the Charity Trustees, membership being made up of circuit and church office holders, ministers and representatives appointed by the church at the Annual Church Meeting. A full list of Council membership is shown in the notes to this report.

Circuit Stewards: **Wesley Gibbs (Senior)
Daniella Fetuga-Joensuu
Helen Tudor
Joseph Adjei
Ama Ackah-Yensu**

Treasurer: **Ama Ackah-Yensu**

Independent Examiner: **Buzzacott LLP
130 Wood St
London
EC2V 6DL**

Bank: **HSBC
The Peak
333 Vauxhall Bridge Road
Victoria
London SW1V 1EJ**

Investment Bankers: **Central Finance Board of the Methodist Church**

Aims and Objectives

The charity's objective is to act as a resource provider within the area around Westminster for the Methodist Church:

It aims to be a vital Christian presence in the heart of London.

The purposes of the Methodist Church are, and shall be deemed to have been, since the Date of Union, the advancement of:

- a) The Christian faith in accordance with the doctrinal standards and discipline of The Methodist Church;
- b) Any charitable purpose for the time being of any Connexional, District, Circuit, local or other organisation of The Methodist Church;
- c) Any charitable purpose for the time being of any society or institution subsidiary or ancillary to The Methodist Church; and
- d) Any purpose for the time being of any charity being a charity subsidiary or ancillary to The Methodist Church.

Public Benefit

We confirm that the trustees have had regard to the Charity Commission's guidance on public benefit.

Structure, Governance and Management

The governing document for the church is the Deed of Union (1932) and Methodist Church Act (1976).

Detailed governance arrangements are outlined within the Constitutional Practice and Discipline of the Methodist Church by order of the annual conference (CPD).

Day to day management of the church is undertaken by the Church and Circuit Stewards and Ministerial Team with input from the Leadership Team.

Trusteeship is exercised by the elected members of the Church Council.

Trustee Training

Trustees are pointed to a range of guidance produced by The Methodist Connexion to support the effective running of the church and the role of Trustees.

Related Parties

The Church, like all local Methodist Churches is situated in a Circuit and is part of the Methodist Church of Great Britain. It consequently locates itself in both its polity and structure. In structural terms the Church is the single Methodist Society in the Westminster Circuit, which is one of some 35 circuits (groupings of local churches) making up the London Methodist District. In terms of Polity and Constitution, it, like all Methodist circuits, is accountable to the annual Methodist Conference.

Somewhat unusually, the Westminster Circuit consists of only one local society (church): Methodist Central Hall Westminster, which consequently is constituted so that wherever possible, local church and local circuit matters share the same constitution (by applying annually Methodist Standing Order 511).

Another unusual aspect of the Circuit/Church is the fact that its Trustees are appointed annually by the annual Conference of the Methodist Church of Great Britain, rather than, more commonly, the circuit meeting and church council.

A third related party, in addition to the Circuit and the Trustees is Central Hall Westminster Ltd, a not-for-profit company formed in 1999 to run an events and conference business using the large and prestigious premises in central London.

Regular meetings of each of these three entities take place, with the Superintendent and Deputy Superintendent Ministers being members of each of the three, thereby having a strategic overview of the total ministry of the Circuit and its related parties.

Risk Management

The major risks associated with the life and ministry of the Church, located in Methodist Central Hall Westminster, are identified and recorded by the Trustees, with professional advice taken as required. An annual review process is undertaken and recorded.

In terms of financial governance, income and expenditure are regularly and routinely monitored, and are compared with the approved annual budget on at least a quarterly basis to detect trends as part of the risk management process and to avoid unforeseen calls on reserves.

We note the following items, all of which are noted on the Risk Register.

- An annual grant to the Circuit is given by the Trustees. This is made possible by profits made by Central Hall Westminster Ltd. Any 'lean years' – and particularly several lean years – would affect the ability of the Trustees to award the grant.
- The impact of the COVID-19 pandemic on the operations of Central Hall Westminster Ltd has been immense. The building's closure and consequent hibernation of the business has meant that profits which would have been tithed to the Trustees have dried up, thus impacting their ability to provide the same level of grant to the Church, as with previous years.
- The as yet unknown plan relating to the 'decanting' of the House of Commons and House of Lords from the Palace of Westminster. Methodist Central Hall Westminster is, because of its proximity, one of a handful of buildings currently in conversation with 'Black Rod' about what are termed "business continuity talks".
- The ever-present risk of terror attacks and security breaches, given the location of the church. For the past four years the Metropolitan Police have estimated the risk of such as 'severe' and give regular security briefings to Circuit officials as to office holders of other large buildings in and around Parliament Square.
- The damage to reputation, given the high usage of the premises by very many clients.
- Safeguarding risks, exacerbated by the very high numbers of people using the building each week. In line with Methodist rulings, safeguarding procedures have, and continue to be improved and overhauled.

Safeguarding

Every person has a value and dignity which comes directly from the creation of male and female in God's own image and likeness. Christians see this potential as fulfilled by God's re-creation of us in Christ. Among other things this implies a duty to value all people as bearing the image of God and therefore to protect them from harm.

Methodist Connexional practice outlines commitment to the following principles:

- The care and nurture of, and respectful pastoral ministry with, all children, young people and adults.
- The safeguarding and protection of all children, young people and adults when they are vulnerable.
- The establishing of safe, caring communities which provide a loving environment where there is informed vigilance as to the dangers of abuse.
- We will carefully select and train all those with any responsibility within the Church, in line with Safer Recruitment principles, including the use of criminal records disclosures and registration with the relevant vetting and barring schemes.
- We will respond without delay to every complaint made which suggests that an adult, child or young person may have been harmed, cooperating with the police and local authority in any investigation.
- We will seek to work with anyone who has suffered abuse, developing with them an appropriate ministry of informed pastoral care.
- We will seek to challenge any abuse of power, especially by anyone in a position of trust.
- We will seek to offer pastoral care and support, including supervision and referral to the proper authorities, to any member of our church community known to have offended against a child, young person or vulnerable adult.
- In all these principles we will follow legislation, guidance and recognised good practice.

The Methodist Central Hall Westminster Church commits itself to: -

- Ensuring the implementation of the Connexional Safeguarding Policy; government legislation, guidance and safe practice in the circuit and in the churches.
- The provision of support, advice and training for lay and ordained people that will ensure people are clear and confident about their roles and responsibilities in safeguarding and promoting the welfare of children and adults who may be vulnerable.

The Safeguarding Policy is approved annually by the Church Council and revised in line with guidelines and directives from the Methodist Church of Great Britain.

Reserves Policy

The Reserves Policy for the Church is to hold a contingency sum equivalent to a minimum of three months', and ideally six months', average expenditure. This should be sufficient to meet any unforeseen item of major expenditure and/or to be able to continue, in the short term, funding planned activities in the event of any inability to raise funds to cover the Church's full expenses, including the assessment payable to the Circuit.

The Contingency Fund as at 31 August 2022 was £148k, which is equivalent to approximately six months' average expenditure.

However, the continuing impact of the pandemic means that the reduced levels of grant from the Conference Property Trustees will continue into 2022/23 and a significant deficit is budgeted for in 2022/23, which will reduce the level of contingency quite considerably. The Church Council will continue to monitor this and endeavour to take measures to maintain reserves at a healthy level.



Signed:

Revd Anthony Miles (Chair of Trustees)

Date: 19 March 2023

METHODIST CENTRAL HALL WESTMINSTER - CHURCH ACCOUNTS
Statement of Financial Activities (SOFA) for the Year Ended 31 August 2022

	Notes	Unrestricted Fund (General)	Designated Funds	Restricted Funds	2021/22 Totals	2020/21 Totals
		£	£	£	£	£
Income and Endowments From:						
Donations and Legacies						
Offerings and Tax recoverable	13	150,507	0	0	150,507	128,565
Donations	13	40,194	0	0	40,194	65,950
Anniversary Giving		12,366	0	0	12,366	4,359
Grant (Trustees)	14	130,000	0	0	130,000	130,164
Donations for Use of Rooms		220	0	0	220	250
Visitors Services & Catering	15	45	0	0	45	0
Legacies		319	0	0	319	
Interest and Investment Income	16	1,317	0	0	1,317	499
Other						
Special Events	17	14,020	0	0	14,020	3,288
Church Groups	18	22	0	0	22	375
Covid-19 Furlough		0	0	0	0	33,340
Designated Funds (See Notes Fund Details)	12	0	2,187	0	2,187	490
Restricted Funds (See Notes Fund Details)		0		38,042	38,042	48,097
Total Income and Endowments		349,010	2,187	38,042	389,239	415,377

METHODIST CENTRAL HALL WESTMINSTER - CHURCH ACCOUNTS
Statement of Financial Activities (SOFA) for the Year Ended 31 August 2022

	Notes	Unrestricted Fund (General)	Designated Funds	Restricted Funds	2021/22 Totals	2020/21 Totals
Expenditure		£	£	£	£	£
Office & Ministry Staff		66,100	0	0	66,100	59,709
Net Payment for Circuit Expenses		194,023	0	0	194,023	193,485
Office Supplies - Staff and Equipment	19	15,491	0	0	15,491	12,271
Internal Organisations and Events						
Sanctuary		1,634	0	0	1,634	33
Church Groups	20	208	0	0	208	665
Special Events	21	36,726	0	0	36,726	1,885
Other Expenditure						
Music Account	22	55,924	0	0	55,924	32,035
Other expenditure	23	16,694	0	0	16,694	20,204
Advertising		5,672	0	0	5,672	4,959
Grants & Donations	24	12,284	0	0	12,284	7,790
Designated Funds (See Notes Fund Details)	12	0	49,012	0	49,012	1,426
Restricted Funds (See Notes Fund Details)		0	0	29,015	29,015	47,146
Total Expenditure		404,756	49,012	29,015	482,783	381,608
Net Income / (Expenditure)		(55,746)	(46,825)	9,027	(93,544)	33,769
Transfers Between Restricted Funds and General Funds		(20,571)	20,571	0	0	0
Net Income after transfers		(76,317)	(26,254)	9,027	(93,544)	33,769
Total funds brought forward		62,186	258,813	73,929	394,928	361,159
Total funds carried forward		(14,131)	232,559	82,956	301,384	394,928

Money received and passed on to External Organisations (For information only)

	2021/22 £	2020/21 £
Balance brought forward from last year	2,636	2,324
Correction to balance brought forward	(287)	0
Offerings/Gifts - received for External Organisations	8,407	4,447
Offerings/Gifts - passed to External Organisations	(8,674)	(4,135)
Balance carried forward	2,082	2,636

METHODIST CENTRAL HALL WESTMINSTER - CHURCH ACCOUNTS
CHURCH BALANCE SHEET for the Year Ended 31 August 2022

	Notes	Unrestricted Fund (General)	Designated Funds	Restricted Funds	2021/22 Totals	2020/21 Totals
Current Assets		£	£	£	£	£
Debtors and prepayments	25	30,490	0	1,184	31,674	48,152
Cash at bank and in hand	26	(7,075)	0	28,691	21,616	73,877
Central Finance Board deposit	27	0	232,559	53,161	285,720	328,607
Total current assets		23,415	232,559	83,036	339,010	450,636
Creditors (due in under 1 year) & unused funds	28	(37,546)	0	(80)	(37,626)	(55,708)
Net current assets		(14,131)	232,559	82,956	301,384	394,928
<i>Total assets less current liabilities</i>		(14,131)	232,559	82,956	301,384	394,928
Net assets		(14,131)	232,559	82,956	301,384	394,928
Funds of the Church						
Unrestricted Fund (General)		(14,131)		0	(14,131)	62,186
Other Funds (restricted & designated)		0	232,559	82,956	315,515	332,742
Total funds		(14,131)	232,559	82,956	301,384	394,928

I confirm that these accrual-based accounts for the year ended 31 August 2022 have been prepared from the records of the Church and that they include all funds under the control of the Church Council.

Signed: 
Ama Ackah-Yensu (Treasurer)

Date: 19 March 2023

I confirm that the annual report and accounts for the year ended 31 August 2022 were presented to the Church Council at its meeting on 19 March 2023 and were approved.

Signed: 
Rev'd Tony Miles (Chair of the Church Council)

Date: 19 March 2023

METHODIST CENTRAL HALL WESTMINSTER - CHURCH ACCOUNTS
Statement of Financial Activities (SOFA) for the Year Ended 31 August 2021

	Notes	Unrestricted Fund (General)	Designated Funds	Restricted Funds	2020/21 Totals		2019/20 Totals
		£	£	£	£		£
Income and Endowments From:							
Donations and Legacies							
Offerings and Tax recoverable	13	128,565	0	0	128,565		153,979
Donations	13	65,950	0	0	65,950		24,763
Anniversary Giving		4,359	0	0	4,359		13,001
Grant (Trustees)	14	130,164	0	0	130,164		260,328
Donations for Use of Rooms		250	0	0	250		3,283
Visitors Services & Catering	15	0	0	0	0		1,131
Interest and Investment Income	16	499	0	0	499		2,231
Other							
Special Events	17	3,288	0	0	3,288		23,043
Church Groups	18	375	0	0	375		704
Covid-19 Furlough		33,340	0	0	33,340		21,003
Designated Funds (See Notes Fund Details)		0	490	0	490		5,142
Restricted Funds (See Notes Fund Details)	12	0	0	48,097	48,097		67,991
Total Income and Endowments		366,790	490	48,097	415,377		576,599

METHODIST CENTRAL HALL WESTMINSTER - CHURCH ACCOUNTS
Statement of Financial Activities (SOFA) for the Year Ended 31 August 2021

	Notes	Unrestricted Fund (General)	Designated Funds	Restricted Funds	2020/21 Totals	2019/20 Totals
Expenditure		£	£	£	£	£
Office & Ministry Staff		59,709	0	0	59,709	70,317
Net Payment for Circuit Expenses		193,485	0	0	193,485	222,744
Office Supplies - Staff and Equipment	19	12,271	0	0	12,271	26,271
Internal Organisations and Events						
Sanctuary		33	0	0	33	2,131
Church Groups	20	665	0	0	665	6,109
Special Events	21	1,885	0	0	1,885	34,002
Other Expenditure						
Music Account	22	32,035	0	0	32,035	44,839
Other expenditure	23	20,204	0	0	20,204	20,233
Advertising		4,959	0	0	4,959	9,827
Grants & Donations	24	7,790	0	0	7,790	47,210
Designated Funds (See Notes Fund Details)	12	0	1,426	0	1,426	29,744
Restricted Funds (See Notes Fund Details)		0	0	47,146	47,146	60,142
Total Expenditure		333,036	1,426	47,146	381,608	573,569
Net Income / (Expenditure)		33,754	(936)	951	33,769	3,030
Transfers Between Restricted Funds and General Funds		(32,450)	32,487	(37)	0	0
Net Income after transfers		1,304	31,551	914	33,769	3,030
Total funds brought forward		60,882	227,262	73,015	361,159	358,129
Total funds carried forward		62,186	258,813	73,929	394,928	361,159

METHODIST CENTRAL HALL WESTMINSTER - CHURCH ACCOUNTS
CHURCH BALANCE SHEET for the Year Ended 31 August 2021

	Notes	Unrestricted Fund (General)	Designated Funds	Restricted Funds	2020/21 Totals	2019/20 Totals
Current Assets		£	£	£	£	£
Debtors and prepayments	25	48,152	0	0	48,152	56,552
Cash at bank and in hand	26	73,877	0	0	73,877	20,640
Central Finance Board deposit	27	(6,050)	258,813	75,844	328,607	333,768
Total current assets		115,979	258,813	75,844	450,636	410,960
Creditors (due in under 1 year) & unused funds	28	(53,793)	0	(1,915)	(55,708)	(49,801)
Net current assets		62,186	258,813	73,929	394,928	361,159
<i>Total assets less current liabilities</i>		62,186	258,813	73,929	394,928	361,159
Net assets		62,186	258,813	73,929	394,928	361,159
Funds of the Church						
Unrestricted Fund (General)		62,186	0	0	62,186	60,881
Other Funds (restricted & designated)		0	258,813	73,929	332,742	300,277
Total funds		62,186	258,813	73,929	394,928	361,159

METHODIST CENTRAL HALL

Westminster Church

Notes to the Financial Statements for the year ended 31 August 2022

1. Basis of accounting

These financial statements are prepared on a going concern basis, under the historical cost Convention.

The financial statements have been prepared in accordance with the Financial Reporting Standard applicable in the UK and Republic of Ireland (FRS 102). The Charity is a public benefit entity for the purposes of FRS 102 and therefore the Charity also prepared its financial statements in accordance with the Statement of Recommended Practice applicable to charities preparing their accounts in accordance with the Financial Reporting Standard applicable in the UK and Republic of Ireland (The FRS 102 Charities SORP) and the Charities Act 2011.

The financial statements are prepared in sterling, which is the functional currency of the charity. Monetary amounts in these financial statements are rounded to the nearest pound.

The principal accounting policies adopted in the preparation of the financial statements are set out below.

Going Concern

After making reasonable enquiries and receiving assurances from the Conference Property Trustees, the Trustees have a reasonable expectation that the Church has adequate resources to continue in operational existence for the foreseeable future and do not consider there to be any threat to the going concern status. Therefore, the Trustees continue to adopt the going concern basis in preparing the financial statements and confirm there are no material uncertainties at the date of the approval of these financial statements.

2. Funds

The funds held constitute: General Funds for any purpose of the Church which are Unrestricted. Restricted funds, which are held for a narrower purpose including those for internal organisations. Details of each material fund are disclosed in the notes to the Accounts.

3. Accounting Policies

Basis

These accounts have been prepared under the historical cost convention except that investments are shown at their market value at the end of the year, on the accruals basis to show a true and fair view of the Church's financial position and activities.

Income

Income is included in the Statement of Financial Activities (SOFA) when the Church becomes entitled to the funds, the receipt is probable and the amount can be measured reliably.

Expenditure

This is recognised when a liability is incurred, or a constructive obligation arises, that results in the payment being unavoidable. Liabilities are recognised as soon as an outflow of economic benefit is considered more likely than not under the legal or constructive obligation committing the Church to pay out resources.

Cash and Cash Equivalents

Cash and cash equivalents include cash in hand, deposits held at call with banks, other short-term liquid investments with original maturities of three months or less, and bank overdrafts. Bank overdrafts are shown within borrowings in current liabilities.

Grants

Grants made by the Church from its own funds are recognised in full at the time of agreement or when the Church accepts that there is a legal or operational obligation to make the payment. When the grant is recurrent over more than one year the balance payable in future years is treated as a provision for future commitments in the Balance Sheet against the appropriate fund, the provision being released in future years as instalments are paid in accordance with the originally agreed terms.

VAT

Since the Church is not VAT registered, all input VAT is charged with the expenses to which it refers.

Tangible fixed assets for use by the Church

These are capitalised if they can be used for more than one year, and individually cost at least £1,000. There is no freehold property owned by the Church.

Financial instruments

Basic financial instruments are measured at amortised cost.

Debtors and creditors

Debtors and creditors receivable or payable within one year of the reporting date are carried at their transaction price and subsequently measured at amortised cost less any impairment.

Critical accounting estimates and areas of judgement

In preparing financial statements it is necessary to make certain judgements, estimates and assumptions that affect the amounts recognised in the financial statements. There are no judgements and estimates are considered by the Trustees to have a significant effect on amounts recognised in the financial statements.

4.Donations and legacies	Unrestricted	Restricted	2022 Total	2021 Total
	£	£	£	£
Collections	124,091	38,042	162,133	147,920
Tax credits	26,155	0	26,155	0
Donations	42,141	0	42,141	67,902
Total	192,387	38,042	230,429	215,822
5. Other trading activities	Unrestricted	Restricted	2022 Total	2021 Total
	£	£	£	£
CD Project	500	0	500	0
Total	500	0	500	0
6. Investment income	Unrestricted	Restricted	2022 Total	2021 Total
	£	£	£	£
Central Finance Board	1,278	0	1,278	460
Other	39	0	39	39
Total	1,317	0	1,317	499

7. Trustees

None of the Trustees, or persons connected with them, received any remuneration or other benefits from the Church or any connected organisation as a result of their office during the year ended 31 August 2022

	2021/22	2020/21
Number of trustees who were paid expenses	5	5
	£	£
Total amount paid	6,815	2,157

Nature of expenses claimed: Car mileage, public transport, hospitality and miscellaneous. These expenses have been incurred by the trustees in the course of fulfilling their pastoral responsibilities.

8. Independent Examiners Fees

	2021/22	2020/21
	£	£
Fees for reporting on the accounts	1,680	1,680
Other fees (for advice, accountancy services etc)	-	-
Total	1,680	1,680

9. Paid Employees

Staff costs (excluding stipends) during the year were as below: -

	2021/22	2020/21
	£	£
Gross wages, salaries and benefits in kind	70,633	79,745
Employer's National Insurance	3,805	4,212
Pension costs	6,140	9,980
Total Staff Costs	80,578	93,937
Average number of full-time equivalent employees in the year were	3.9	3.9

10. Reserves Policy

	2021/22	2020/21
	£	£
General Funds held	148,000	148,000

The current level of reserves is equivalent to nearly 6 months of average expenditure including payments made to the Circuit.

Policy for Restricted Funds

No policy as such except that such funds may only be used for the purpose for which they have been given / donated.

Terms relating to Endowment Funds
No such funds are held by the church.

This Reserves Policy has been approved by the Church Council.

11. Related Parties

Name of related party	Description of transaction	Income from related party during the year	Payments to related parties during the year	Loans to related party during the year	Amounts owed by related party as on 31 Aug 2022
		£	£	£	£
Fund for Support of Presbyters & Deacons	Gift made by Church	0	200	0	0
Fund for Property	Gift made by Church	0	330	0	0
London Mission Fund Payment	Gift made by Church	0	200	0	0
Total		0	730	0	0

12. Details of Designated and Restricted Funds

2021/22

CHURCH FUNDS	Balance B/Fwd 01/09/21	Income	Expenditure	Transfer Between Funds	Balance C'Fwd 31/08/22
FUNDS	£	£	£	£	
General - Designated					
Sunday Catering	329	847	(1,264)	0	(88)
Tithe	40,229	0	(40,000)	20,571	20,800
Tithe Reserve	3,400	0	0	0	3,400
CD Project	13,967	500	0	0	14,467
AVA & Server Replacement	17,030	0	(6,908)	0	10,122
Church Space Refurbishment & Maintenance	23,858	0	0	0	23,858
Fees to be Paid for Special Services	0	840	(840)	0	0
Digital Outreach and Engagement	12,000	0	0	0	12,000
Contingency	148,000	0	0	0	148,000
TOTAL DESIGNATED	258,813	2,187	(49,012)	20,571	232,559
Restricted					
Monday Guild	362	0	0	0	362
Flower Fund	409	1,906	(2,260)	40	95
Hymn Sheet Fund	2,308	528	0	40	2,876
Special Offerings to be Donated	267	6,385	(6,811)	159	0
Night Shelter	1,488	0	0	0	1,488
Welcome Box Project	593	0	0	0	593
Christian Aid	0	655	(655)	0	0
World Mission Easter Offering	0	1,208	(1,208)	0	0
Benevolent Fund	6,706	3,445	(5,089)	(269)	4,793
Music & Worship Legacy	45,650	0	0	0	45,650
Organ Recital Fund	0	0	0	110	110
Friends of Westminster	100	50	0	0	150
Ghana Fellowship	2,010	1,636	(1,019)	(80)	2,547
Sierra Leone & Gambia Fellowship	0	105	(52)	0	53
Online Services	14,036	22,124	(11,921)	0	24,239
Total Restricted Funds	73,929	38,042	(29,015)	0	82,956
TOTAL RESTRICTED & DESIGNATED FUNDS	332,742	40,229	(78,026)	20,571	315,515
General Fund	62,186	349,010	(404,756)	(20,571)	(14,131)
TOTAL FUNDS	394,928	389,239	(482,783)	0	301,384

The balance of Designated and Restricted Funds has decreased by £17,207. There has been a net transfer from Church General Funds of £20,571 to the Tithe Fund for distribution to other charitable organisations nominated by church members.

CHURCH - NOTES TO THE FINANCIAL STATEMENTS

	2021/22		2020/21	
INCOME	£	£	£	£
General Funds (Unrestricted)				
Note 13 - Offerings and tax recoverable				
Envelope Scheme	55,746		53,312	
Banker's Orders	38,935		42,654	
Loose Cash	26,326		3,856	
Tax recovered	26,155		26,791	
Charities Trust	1,947		1,952	
Lunchtime Services	1,398		0	
		150,507		128,565
Donations		40,194		65,950
		<u>190,701</u>		<u>194,515</u>
Note 14 - Trustees Grant				
SVFP Grant	9,100		9,234	
SVFP Rent	13,000		13,008	
Church Grant General	107,900		107,922	
		<u>130,000</u>		<u>130,164</u>
Note 15 - Visitors Services				
Visitor services - Donations	45		0	
		<u>45</u>		<u>0</u>
Note 16 - Interest & investment income				
Dividend Income	39		39	
Deposit interest	1,278		460	
		<u>1,317</u>		<u>499</u>
Note 17 -Special Events				
Daffodil Day	1,753		98	
Christmas Lunch	2,142		0	
Prayer and Healing Ministry including Conference	1,000		3,121	
The Gathering	632		0	
Carol Service	2,775		42	
Anniversary Dinner	1,160		0	
Church Fun Fellowship Retreat	4,421		0	
Bookstall Sales	125		0	
Miscellaneous	12		27	
		<u>14,020</u>		<u>3,288</u>
Note 18 - Church Groups & Ministries				
JC Live	22		375	
		<u>22</u>		<u>375</u>

EXPENDITURE	2021/22		2020/21	
	£	£	£	£
<i>Note 19 Office Supplies</i>				
Photocopying	1,337		2,247	
General Stationery	889		897	
Printing	3,203		1,459	
Literature	349		2,157	
Easter Offering / Gift envelopes	458		0	
Postage	3,648		976	
Computer supplies & software incl Digital Outreach	4,867		4,535	
Office Equipment & Supplies	740		0	
		<u>15,491</u>		<u>12,271</u>
<i>Note 20 Church Groups</i>				
JC Live	152		465	
YPF	56		0	
		<u>208</u>		<u>465</u>
<i>Notes 21 -Special Projects & Events</i>				
Daffodil Day	5,372		250	
Christmas lunch & party	3,917		0	
Prayer and Healing Ministry including Conference	3,529		1,385	
Gathering	3,243		250	
Fun and Fellowship Weekend	7,648		0	
Carol Service	7,506		0	
Anniversary Dinner	2,268		0	
Cathedral Events	2,948		0	
Good Friday in Victoria Street	295		0	
		<u>36,726</u>		<u>1,885</u>
<i>Note 22 Music Account</i>				
Fees for Directors of Music / Musicians / Choirs	55,149		32,035	
Music Expenses	775		0	
		<u>55,924</u>		<u>32,035</u>

CHURCH - NOTES TO THE FINANCIAL STATEMENTS

	2021/22		2020/21	
RESOURCES EXPENDED	£	£	£	£
<i>Note 23 - Other expenditure</i>				
Pulpit supply	1,849		305	
Lay training	163		1,228	
Website development & maintenance	1,479		12,059	
In-house hospitality / Volunteers				
Dinner	168		0	
Hospitality & Restaurant Vouchers	600		110	
Bank charges	625		246	
Miscellaneous	7,718		3,407	
Materials and Items for Services	2,055		719	
Subscriptions	357		450	
Independent Examiners Fees	1,680		1,680	
		<u>16,694</u>		<u>20,204</u>
<i>Note 24 Grants & Donations</i>				
The Fund for the Support of Presbyters and Deacons (previously Auxiliary Fund) Payment	200		200	
Property Fund	330		330	
London Mission Fund	200		200	
		730		730
St Vincent's Family Project	10,000		5,560	
The Gate Crisis Pregnancy Centre	0		1,500	
		<u>10,730</u>		<u>7,790</u>

CHURCH - NOTES TO THE FINANCIAL STATEMENTS

	2021/22		2020/21	
BALANCE SHEET NOTES	£	£	£	£
<i>Note 25 - Debtors and Prepayments</i>				
Debtors				
Accrued Income				
Gift Aid for General Fund	29,637		29,536	
Covid-19 Furlough	0		13,737	
Owed by Circuit	0		2,687	
	<u>29,637</u>		<u>45,960</u>	
<i>Note 26 - Cash at Bank and in hand</i>				
<i>General Fund - HSBC Current Account</i>				
General Fund - HSBC Current Account	(7,631)		73,321	
General Fund Sanctuary Account	309		309	
General Fund Petty Cash	247		247	
Restricted Funds HSBC	28,691		0	
	<u>21,616</u>		<u>73,877</u>	
<i>Note 27 - Central Finance Board</i>				
Designated Funds	232,559		258,813	
Restricted Funds	53,161		75,844	
General Fund	0		(6,050)	
	<u>285,720</u>		<u>328,607</u>	
	<u>285,720</u>		<u>328,607</u>	
<i>Note 28 - Creditors (due in under 1 year)</i>				
Accrued Expenses				
Independent Examiners Fees	1,680		1,680	
Staff expenses / Musicians	5,113		9,368	
Hospitality	0		70	
Digital Outreach Salary & Expenses	788		1,269	
Photocopying & Printing	1,953		1,998	
Computer Supplies & Multi Media	751		180	
Website Maintenance & Development	164		116	
Advertising	5,472		0	
Miscellaneous & items for Services	119		200	
Owed to Circuit	21,506		38,619	
Designated / Restricted Funds	80		1,915	
Circuit Expenses	0		293	
	<u>37,626</u>		<u>55,708</u>	
Prepaid Expenses				
Staff Expenses & Salaries	0		1,961	
Miscellaneous & items for Services	179		13	
Hospitality	41		0	
Circuit Expenses	0		218	
Printing and Stationery	633		0	
Designated / Restricted Funds	1,184		0	
	<u>2,037</u>		<u>2,192</u>	
	<u>39,663</u>		<u>57,900</u>	

Church Trustees as at 31 August 2022

The following served as trustees during the year and/or were trustees at the date of signing the accounts.

Revd. Tony Miles	Ollie McEwen
Revd. Lansford Penn-Timothy	Joe Awotwi
Deacon Alison McMillan	Tony Ackah-Yensu
Revd. Gordon Newton	Alison Bryan
Daniella Fetuga-Joensuu	Judith Mitchell
Helen Tudor	Philippa Muir
Wesley Gibbs	Christina Asare Owusu
Esther Buckman	Charlotte Rankin
Emmanuel Asante	Sarita Lightfoot-Taylor
Abdul Bah	Esther Thomas
Michael Davies	Mark Williamson
Regina Boye	Jacob Baiden
Denzil Cummings-John	Kate Jones
Comfort Golightly	Seth Kofi Otoo
Joseph Adjei	Grace Sangmuah
Shirley Bernisto	Christina Fashola
Grace Kermah	Chika Unaka
Sabrina Malcolm	Aretha Solanke
Ama Ackah-Yensu	Charles Bushell
Jocelyn Boafo	MS Kim
John Philips	Omotayo Roberts
Dinah Longdon	Marko Joensuu

Independent examiner's report to the trustees of Methodist Central Hall Westminster Church

I report to the charity Trustees on my examination of the accounts of the charity for the year ended 31 August 2022.

Responsibilities and basis of report

As the Trustees of the Charity you are responsible for the preparation of the accounts in accordance with the requirements of the Charities Act 2011 ('the Act').

I report in respect of my examination of the charity's accounts carried out under section 145 of the 2011 Act and in carrying out my examination I have followed all the applicable Directions given by the Charity Commission under section 145(5)(b) of the Act.

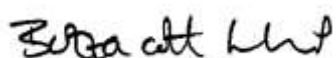
Independent examiner's statement

Since the charity's gross income exceeded £250,000 your examiner must be a member of a body listed in section 145 of the 2011 Act. I confirm that I am qualified to undertake the examination because I am a member of the Institute of Chartered Accountants in England and Wales, which is one of the listed bodies.

I have completed my examination. I confirm that no material matters have come to my attention in connection with my examination giving me cause to believe that in any material respect:

- ♦ accounting records were not kept in respect of the charity as required by section 130 of the Act; or
- ♦ the accounts do not accord with those records; or
- ♦ the accounts do not comply with the applicable requirements concerning the form and content of accounts set out in the Charities (Accounts and Reports) Regulations 2008 other than any requirement that the accounts give a 'true and fair view' which is not a matter considered as part of an independent examination.

I have no concerns and have come across no other matters in connection with the examination to which attention should be drawn in this report in order to enable a proper understanding of the accounts to be reached.



Katharine Patel ACA
Buzzacott LLP
Chartered Accountants
130 Wood Street
London EC2V 6DL

23 March 2023