



Shrewsbury Street Pastors Annual Report 2020/2021

The Trustees present their annual report and financial statements for the year ended 31st March 2021. The Trustees have adopted the provisions of the Charities (SORP) (FRS 102) 'Accounting and Reporting by Charities': Statement of Recommended Practice applicable to charities preparing their accounts in accordance with the Financial Reporting Standard applicable in the UK and Republic of Ireland (FRS 102) (effective 1 January 2019)', Financial Reporting Standard 102 'The Financial Reporting Standard applicable in the UK and Republic of Ireland' and the Charities Act 2011 in preparing the annual report and financial statements of the charity.

Structure, governance and management

The charity is constituted as an unincorporated charity and is governed by its Trust Deed dated 8 August 2011. The charity was registered with the Charity Commission on 28 October 2011 and activities commenced on 12 November 2011.

The trustees are the group of people charged with the governance of the charity. No trustee had any financial interest in the charity. The charity is governed and managed by a Management Committee which meets every two months. The method of appointment of trustees is set out in the Trust Deed.

Objectives and activities

The purposes of the charity are:

- 1.To advance education in accordance with Christian principles by such means as the Management Committee may consider appropriate in Shrewsbury and in such other parts of the United Kingdom or the world as the Management Committee may from time to time think fit and to fulfil such other purposes which are exclusively charitable according to the law of England and Wales and are connected with the charitable work of the Charity.
- 2.To relieve sickness and financial hardship and to promote and preserve good health by the provision of funds, goods or services of

any kind including through the provision of counselling and support in Shrewsbury and in such other parts of the United Kingdom or the world as the Management Committee may from time to time think fit.

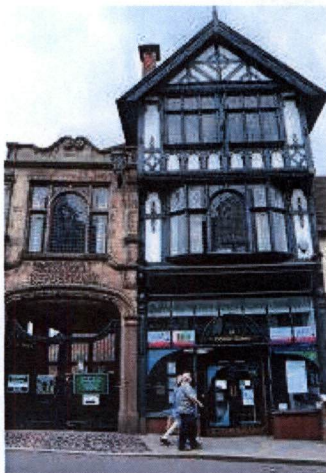
3.To advance the Christian Faith in accordance with the License Agreement executed with Ascension Trust and the Core Values and Mission.

Core Values

Street Pastors, who embrace Christians from a range of denominations with a passion for Jesus and for the betterment of the community, adhere to the following five core values:

- 1.The sacredness and sanctity of human life
- 2.Respect for the community
- 3.Honesty and integrity
- 4.Personal responsibility
- 5.The promotion of the growth and development of the individual to their fullest potential.

We have a suite of offices in what was the old reference library in the centre of Shrewsbury



HQ Volunteers

We now have a group of volunteers who regularly come into our offices to provide support for the workings of the charity. These volunteers are supported by the Director of Operations.

Our fund-raising activities are organised by our Friends of Shrewsbury Street Pastors Group. They arrange events such as concerts, jumble sales and raffles.

All the activity in the office has stopped during this year due to Covid 19. The building was closed by Shropshire Council and remains closed until further notice.

Shrewsbury Street Pastors

Legal and administrative information

31 March 2021

Working name of charity

Shrewsbury Street Pastors

Trustees

Pete Lawton, Chairman

Victoria Keeble,
Secretary

Pauline Jones

Bernard Knopp

Carole Donoghue

Ivan Hacking

Dee Ploszay

Registered Charity

Number: 1144473

Registered Address:

1A Castlegates,
Shrewsbury, Shropshire
SY1 2AQ

Website:

www.streetpastors.org.uk/locations/shrewsbury

Email address:

shrewsbury@streetpastors.org.uk

Independent Examiner:

D C Blofield BSc FCA
MEWI
Caerwyn Jones
Chartered Accountants
Emstrey House
Shrewsbury Business
Park
Shrewsbury
Shropshire
SY2 6LG

Bankers:

The Co-operative bank

P.O.Box 250

Delf House

Southway

Skelmersdale

WN8 6WT

Mission Statement

Our mission is to train volunteers drawn from Christian churches of different denominations to provide a listening ear and practical help to the socially marginalised and the needy.

We typically patrol the streets of Shrewsbury on Friday and Saturday nights and work in partnership with the police, local councils and a range of voluntary and statutory organisations in order to reach and help all those in need.

The Gospel is the reason for what we do but is not at the forefront of what we say.

We are non-judgmental and will give time and help to anyone and everyone we meet.

Support from local churches

Since its formation, Shrewsbury Street Pastors has been actively supported by the following churches. This vital support is greatly appreciated.

Albert Road Evangelical Church, Oswestry.
All Saints and St Michael's Church, Castlefields.
Wem Baptist Church.
Apostolic Church, Belle Vue.
St Lawrence's Church, Church Stretton.

Barnabas Community Church, Shrewsbury.
Holy Trinity Church, Much Wenlock.
Belle Vue Methodist Church.
Bayston Hill Methodist Church
Catholic Cathedral, Shrewsbury.
St Giles & St Eata's Church, Shrewsbury.
Christ Church, Bayston Hill.
Bomere Heath Methodist Church
Church of the Holy Spirit, Harlescott.
Emmanuel Church, Harlescott.
Holy Trinity Church, Belle Vue.
Hope Church, Harlescott.
Gwalia House, Overton.
Riversway Elim Church, Harlescott.
Salvation Army, Shrewsbury.
Shelton and Oxon Christ Church, Bicton.
Shrewsbury Abbey,
St Andrew's Church, Craven Arms.
St Chad's Church, Shrewsbury.
St Laurence's Church, Church Stretton.
St Peter's Church, Monkmoor.
St Thomas Church, Hanwood.
St. Winifred's RC Church, Crowmoor.
Holy Trinity Churches, Meole Brace, Shrewsbury.

United Reformed Church, Shrewsbury.
St Cuthberts Church, Clungunford.



Prayer support

Prayer for the work of the Shrewsbury Street Pastors is vital, as we seek God's strength and motivation for this work, spiritual resources of grace and love, the safety and protection of the Street Pastors, financial provision for the initiative and God's guidance for its development.

Prayer support for Shrewsbury Street Pastors has been expanding. We have a Prayer Co-ordinator. Each Street Pastor volunteer has a Prayer Partner or Buddy, who pray for them regularly, especially when they are on patrol. There are also six regular Prayer Supporters, who meet together with others from time to time or pray with the team before they go out on the streets. The Prayer Pastors are also able to mentor and pray for the team members where there have been difficult or challenging incidents.

Several Churches also offer prayer for Shrewsbury Street Pastors and involve home groups, who offer support and prayers for the Town and all who work in the night time economy in Shrewsbury Town Centre.

The Shrewsbury Street Pastors are volunteers and they typically patrol the streets on a Saturday, and some Friday nights 10:30pm – 4am and the work is funded by voluntary contributions. Much of the work involves identifying vulnerable people in the vicinity of the River Severn, in collaboration with door staff at the venues and the local police.

A primary function is the protection of young adults who come from a wide catchment area to socialise in Shrewsbury's town centre. While many of Shrewsbury's venues provide a relatively safe place for people to meet, inevitably some encounter difficulty following a heady cocktail of too much alcohol, recreational drugs, high emotions and relationship difficulties. Part of the mission is to intervene before people call the emergency services, providing pre-emptive support for people in the town centre.

The service is welcomed for being direct and impartial, providing support in a non-judgmental way. Additional services include the referral of individuals with mental health issues to supporting organisations such as The Samaritans and Mind known locally as "Sanctuary". Our training includes Suicide Prevention, First Aid, Radio Training, Drugs and Alcohol, Youth Culture and Mental Health First Aid, all of this training is provided by professional specialists.

We monitor twenty rough sleepers, ensuring that The Shrewsbury Ark Day Centre for homeless people is notified when necessary and doing what we can to keep them safe.

We have a support vehicle, called the Donkey, which we use as a Safe Place to get vulnerable people off the streets. This is used alongside our walking patrols which consist of 3-6 trained volunteers, accompanied by a driver and helper on our support vehicle. Furthermore, we would like to improve the support vehicle's capabilities, using it for outreach, preventative work, and promotional activities to raise awareness of our charity's objectives.

The work we do.

Our teams keep an eye on everyone out at the weekends to ensure they are as safe as possible, keeping those inebriated away from the potential danger of the River Severn. We can provide water to those dehydrated, flip-flops to those who can't walk in their shoes, a space blanket to those who are cold, a sick bag so taxis will take them home, or a phone call to those who are separated from friends or family to reunite them, or lollipops to diffuse aggression. More challenging are those people who have suicide tendencies, mental health issues, or relationship problems. The teams are trained to recognise who needs professional intervention and can make referrals to Sanctuary, a partnership with MIND, Samaritans, local Neighbourhood Policing team and ourselves.

We are now writing 'Prevention Plans' to support people with additional special needs primarily mental health issues for those whom the teams meet on a regular basis.

Our teams are trained to listen and be non-judgmental in their approach to everyone, helping with whatever is needed, whether it is a plaster, a tissue or a prayer if requested. We work with many of the homeless people at the weekend when all other support is unavailable. We can offer hot drinks, biscuits, blankets, a Winter Survival kit, which includes socks, a hat, gloves etc. and referral to other professional agencies if required. We carry first aid equipment with us, so we can clean wounds, supply plasters, call an ambulance if necessary or do whatever is required.

The practical difference we want to make?

The River Severn runs in a loop through the centre of our town, which means all the night time venues are within two minutes' walk from a very fast flowing river prone to flooding, so keeping revellers safe, and those who are at significant risk of committing suicide is a life-threatening reality. Shrewsbury's vibrant night time economy serves a large rural area of our county. We have four universities (School of Health Sciences Staffordshire University, University Centre Shrewsbury, Harper Adams University, Telford campus of Wolverhampton University) bringing substantial numbers of young people into our town.

We have problems with individuals bringing drugs from Liverpool and The Wirral, now part of 'County Lines' influencing both our night-time economy and the more vulnerable members of our community. We also have instances of "grooming" in our town. This is not a big issue and is one that is monitored regularly by the local Community Safety Partnership.

There are increasing numbers of houses being built across the county resulting in an increasing population of all age groups, including those with little local family support, making them more vulnerable to outside influences.

Shrewsbury has twice been awarded the prestigious Purple Flag award as recognition as a 'Safe Place' to party. Street Pastors was influential in achieving this award.

Unfortunately, there is no longer a night bus service in Shrewsbury, and no return transport by train after midnight so all night time party goers must rely on taxis, (which must be booked in advance) friends or family or walking to return home, often by the side of the river.

The strengths and opportunities we see in our community?

All volunteers are motivated and committed to our work on the streets. Street Pastor teams are a constant factor now in town as we are out every weekend. Our local young people generally go out for the evening with friends, but they know that Shrewsbury Street Pastors are there if things get difficult and start to go wrong. We have a proven track record and we are now recognised by young people who can trust that we are there to support and help them as necessary. Young people are now proactive in finding us when they need us and will approach the door staff to call us on their radios. We have established links and reputation with all the main support agencies in the locality such as Shrewsbury Mental Health services, Samaritans, Police, Ambulance and Fire and Rescue services.

The door staff contact us, using their Pub-Watch radios, a recognised method of communication when they need help with issues involving alcohol, drugs, minor first aid requirements, suicide threats or mental health crises as they know our teams are trained and able to help.

We have been awarded the Queen's Award for Voluntary Service because of our outstanding work in the local community.

Working during the Covid 19 pandemic

Since 26th March 2020 the country has been in several lockdowns due to Covid 19 Pandemic. Therefore, Shrewsbury Street Pastors has stopped all work out on the streets, during these lockdowns. This has been done in line with the Government guidance for Covid 19. We have organised a limited service during the times when Government guidelines

allowed – only about four months in total during this annual report period, following all the appropriate recommendations for the safety of our volunteers.

Most of our funding has come to a halt – like many local charities - and the trustees have furloughed our Director of Operations, but he has worked 10 hours per week in order to keep the charity functioning.

Our Street Pastors volunteers live all over Shropshire. We have six who work either in hospitals or care homes and they continue to work as front-line workers. Two are working with very vulnerable young people which includes those who are neglected, sexually or physically abused, trafficked and those involved in County Lines. At the moment, understandably, the young people are constantly bored with not being able to go outside due to Covid-19. One of these workers has commented that during his working hours “we regularly have to put up with violence, spitting, being punched and having things thrown at us”.

We have others who are heading support groups in some of the local villages and these are helping with shopping, getting medicines and helping those who need transport to and from hospital. Over half of the Street Pastors are involved with pastoral care lists from their local churches and this involves regularly phoning vulnerable people to check that they are OK. These lists include a large number of people who have been advised by the NHS to shield and stay socially isolated.

We have dropped off supplies of toiletries to Shrewsbury Food Bank and we are keeping in touch with Shrewsbury Ark to monitor support needs for the homeless.

We are continuously looking at ways that we can care, listen and help those who are vulnerable and in need. We are looking to set up a further support system when we are eventually given permission to come out of isolation. Our concern, which is one that we share with Shropshire Mental Health Service and Shrewsbury Samaritans, is the almost certain increase in numbers of people who will have mental health issues once the pubs and clubs reopen.

We are currently working with Shropshire Mental Health Service and they have been using the Donkey – our support vehicle - to take mental health support out into the more rural parts of our county.

During the year ahead we intend to:

- Respond to issues raised by Covid 19 and to operate within current Government guidelines.
- Produce a three-year Business plan outlining outcomes and budgets for the next three years.
- Continue to promote “The Friends of Shrewsbury Street Pastors”, which was launched on 28 November 2013. Its aim is to encourage all Shropshire people, companies and organisations, to become involved with SSP, raise regular funds and promote the initiative.
- Continue to promote SSP and raise awareness of the initiative amongst the local media, churches and other relevant organisations in Shropshire.
- Attend local events to have a presence and promote SSP, with a view to recruiting new volunteers and raising funds. Most of this task will invariably be carried out by the Friends of SSP volunteer group.

- Recruit more volunteers as Street Pastors and Prayer Pastors through promotion to churches throughout Shropshire. A recruitment event is being planned for Autumn 2021. This is due to current Covid 19 restrictions.
- Collaborate with other SPIs in West Mercia (there are now 7), the Midlands and Wales Regions, in training volunteers. Refresher training for existing trained volunteers is planned in 2021, and also other relevant training, such as First Aid and River Safety;
- Continue to attend meetings of Team Shrewsbury, West Mercia Police, Churches Together Shrewsbury, Pubwatch and other relevant organisations with a view to working in partnership on local initiatives, to help keep the streets of Shrewsbury safer for all who live and work in, and visit, the town centre, particularly on weekend nights.
- Continue to be an active member of Team Shrewsbury.
- Continue to invite and encourage any interested persons, in particular potential recruits, to join the Street Pastors patrol as an Observer.
- Advise and assist other Shropshire towns, and towns within the West Mercia Police area, with the setting up of an SPI in those areas.
- Look at finding a replacement for our current support vehicle to support the work of the Street Pastor foot teams.

This is also known as Church in action on the streets.

REPORT OF THE TRUSTEES

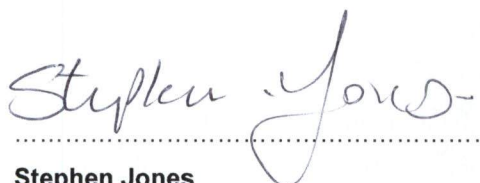
For the year ended 31 March 2021

Reserves policy

The Trustees are of the opinion that the charity should have unrestricted reserves equivalent to approximately three to six months expenditure, and the charity intends to build up the free reserves and maintain them at such a level.

Approval

This report was approved by the board of trustees on 27.10.21 and signed on its behalf.



.....

Stephen Jones

Director of Operations

**INDEPENDENT EXAMINER'S REPORT TO THE MEMBERS OF
SHREWSBURY STREET PASTORS**

for the year ended 31 March 2021

I report to the charity trustees on my examination of the accounts of the charity for the year ended 31 March 2021 which are set out in this report.

Responsibilities and basis of report

As the charity's trustees you are responsible for the preparation of the accounts in accordance with the requirements of the Charities Act 2011 ('the Act').

I report in respect of my examination of the charity's accounts carried out under section 145 of the Act and in carrying out my examination I have followed all the applicable Directions given by the Charity Commission under section 145(5)(b) of the Act.

Independent examiner's statement

I have completed my examination. I confirm that no material matters have come to my attention in connection with the examination giving me cause to believe that in any material respect:

1. accounting records were not kept in respect of the charity as required by section 130 of the Act; or
2. the accounts do not accord with those records

I have no concerns and have come across no other matters in connection with the examination to which attention should be drawn in this report in order to enable a proper understanding of the accounts to be reached.

D C Blofield BSc FCA MEWI
Caerwyn Jones
Chartered Accountants
Emstrey House
Shrewsbury Business Park
Shrewsbury
Shropshire
SY2 6LG

Signature 

Date 27.10.21

SHREWSBURY STREET PASTORS
RECEIPTS AND PAYMENTS ACCOUNT

for the year ended 31 March 2021

	Notes	Unrestricted Funds <u>2021</u> £	Unrestricted Funds <u>2020</u> £
RECEIPTS			
Voluntary receipts:			
Receipts from donors			
Grants from organisations		3,168	20,965
Contributions for training and uniforms			1,000
Other donations		10,718	21,824
Gift aid		450	1,717
		<u>14,336</u>	<u>45,506</u>
Investment income	2	10	10
Employment allowance		1,103	1,401
Coronavirus Job Retention Scheme grant		12,975	
Total receipts		<u>28,424</u>	<u>46,917</u>
PAYMENTS			
Charitable activities	3	23,673	27,762
Governance costs	4	690	660
		<u>24,363</u>	<u>28,422</u>
ASSET AND INVESTMENT PURCHASES			
Fixtures, fittings and equipment		859	1,906
Total payments		<u>25,222</u>	<u>30,328</u>
CASH FUNDS BROUGHT FORWARD		25,813	9,224
INCREASE/(DECREASE) IN CASH FOR THE YEAR		3,202	16,589
CASH FUNDS CARRIED FORWARD		<u>29,015</u>	<u>25,813</u>

SHREWSBURY STREET PASTORS
STATEMENT OF ASSETS AND LIABILITIES
at 31 March 2021

	Unrestricted Funds <u>2021</u>	Unrestricted Funds <u>2020</u> £
CASH FUNDS		
Bank accounts	28,976	25,775
Cash in hand	39	38
Total cash funds	<u>29,015</u>	<u>25,813</u>

ASSETS RETAINED FOR THE CHARITY'S OWN USE

	Unrestricted Funds <u>2021</u>	
	Cost £	Current value £
Fixtures, fittings and equipment	<u>5,915</u>	<u>2,564</u>
Vehicle	<u>8,000</u>	<u>1,755</u>

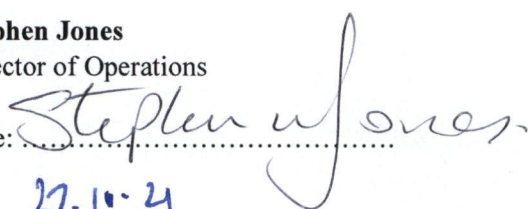
Signed on behalf of the trustees:

Stephen Jones

Director of Operations

Date:

27.10.21



SHREWSBURY STREET PASTORS

NOTES TO THE FINANCIAL STATEMENTS

for the year ended 31 March 2021

1. Accounting policies

1.1 Basis of accounting

The financial statements of the charity, which is a public benefit entity under FRS 102, have been prepared in accordance with the Charities SORP (FRS 102) 'Accounting and Reporting by Charities: Statement of Recommended Practice applicable to charities preparing their accounts in accordance with the Financial Reporting Standard applicable in the UK and Republic of Ireland (FRS 102) (effective 1 January 2019)', Financial Reporting Standard 102 'The Financial Reporting Standard applicable in the UK and Republic of Ireland' and the Charities Act 2011. The financial statements have been prepared under the historical cost convention.

1.2 Assets retained for the charity's own use

Assets retained for the charity's own use are stated at cost less depreciation.

Depreciation is calculated to write off the cost or valuation of fixed assets, less any residual value, over their useful lives as follows:

Fixtures, fittings and equipment - 20% on a reducing balance basis.
Vehicle - 25% on a reducing balance basis.

2. Investment income

	2021	2020
	£	£
Bank interest receivable	<u>10</u>	<u>10</u>

SHREWSBURY STREET PASTORS

NOTES TO THE FINANCIAL STATEMENTS

for the year ended 31 March 2021

3. Payments: Charitable activities

	Activities undertaken directly £	Support costs £	Total 2021 £	Total 2020 £
Street patrols				
Uniform			-	756
Mileage and travelling claims			-	28
Training and conferences			-	601
Consumables	605		605	1,001
Telephone and radio expenses	878		878	966
Ascension Trust licence	373		373	955
Repairs and maintenance	58		58	
Postage and stationery		19	19	114
Computer consumables		213	213	206
Wages and salaries		16,254	16,254	18,150
Employer's NI		1,103	1,103	1,401
Payroll costs		180	180	150
Employee Pension contributions		541	541	609
Employer Pension contributions		325	325	368
Pension service charges		180	180	225
Vehicle expenses	2,666		2,666	1,953
Premises costs			-	
Insurance	86		86	
Sundries		172	172	17
Fundraising and publicity		20	20	112
 Soup hub			-	100
 Christmas Tree Festival			-	50
	<u>4,666</u>	<u>19,007</u>	<u>23,673</u>	<u>27,762</u>

SHREWSBURY STREET PASTORS
NOTES TO THE FINANCIAL STATEMENTS
for the year ended 31 March 2021

4. Payments: Governance costs

Accountancy

2021
£

690

2020
£

660

690

660