

# THE STAN BOWLEY TRUST

England & Wales · Charity number 1144398

## Details

---

Other names	THE STAN BOWLEY CYBERKNIFE TRUST
Status	Registered
Legal form	Trust
Registered	2011-10-24
Register	<a href="#">View on the Charity Commission register</a>

## Contact

---

**Address** Stan Bowley Trust  
2 Shaw Park Business Village  
Shaw Road  
Wolverhampton  
WV10 9LE

**Phone** 01543 222220

**Email** [enquiries@stanbowleytrust.org](mailto:enquiries@stanbowleytrust.org)

**Website** [www.thestanbowleytrust.org](http://www.thestanbowleytrust.org)

## Activities

---

**Objects:** 1) TO PROMOTE AND PROTECT THE PHYSICAL AND MENTAL HEALTH OF CANCER PATIENTS LIVING IN ENGLAND, SCOTLAND AND WALES THROUGH THE PROVISION OF SUPPORT AND PRACTICAL ADVICE IN RELATION TO CYBERKNIFE TREATMENT.2) TO RELIEVE SICKNESS AND PRESERVE THE HEALTH OF CANCER PATIENTS IN PARTICULAR THOSE LIVING IN THE NORTH WEST AND MIDLANDS OF ENGLAND BY PROVIDING AND ASSISTING IN THE PROVISION OF EQUIPMENT, FACILITIES AND SERVICES NOT CURRENTLY PROVIDED BY THE STATUTORY AUTHORITIES IN PARTICULAR A CYBERKNIFE TREATMENT CENTRE.

**Activities:** Please visit our website [www.thestanbowleytrust.org](http://www.thestanbowleytrust.org) for up to date activities

## Classification

---

- **How:** Makes Grants To Organisations, Provides Buildings/facilities/open Space, Provides Advocacy/advice/information
- **What:** Education/training, The Advancement Of Health Or Saving Of Lives
- **Who:** The General Public/mankind

## Geography

- Throughout England

## Finances

Period end	Income	Expenditure	Assets	Employees
2025-04-01	£63,092	£62,825	-	-
2024-04-01	£131,325	£127,048	-	-
2023-04-01	£83,320	£70,371	-	-
2022-04-01	£83,320	£70,371	-	-
2021-04-01	£24,601	£19,635	-	-

## Trustees

Name	Role	Appointed
<b>Steven John Tamplin</b>	Chair	2026-02-26
Howard Ballantyne		2018-01-04
Jenny Bradley		2023-08-03
Matthew Black		2023-08-03
Pamela Bowley		2011-10-24
Robert Ferguson Clarke		2025-01-28
Rona Johnson		2011-10-24
Vicki Maye		2025-01-28

**THE STAN BOWLEY TRUST**

England & Wales - Charity number 1144398

---

# Accounts

---



2 Shaw Road Business Village  
Wolverhampton  
WV10 9LE

W [thestanbowleytrust.org](http://thestanbowleytrust.org)

T 01543 222220

E [enquiries@stanbowleytrust.org](mailto:enquiries@stanbowleytrust.org)

07 January 2025

Raising Funds for CyberKnife – Robotic Cancer Treatment

The primary objective of The Stan Bowley Trust (SBT) is to promote awareness of the CyberKnife cancer treatment. SBT's mission focuses on disseminating information about this treatment within the West Midlands region of the United Kingdom. In conjunction with its awareness campaigns, SBT is dedicated to supporting the provision of equipment and facilities that are not currently accessible through statutory authorities. These initiatives are designed to help relieve the sickness and preserve the health and well-being of cancer patients.

#### **Objectives and Activities:**

SBT is committed to ensuring widespread understanding of the CyberKnife treatment among both community members and professionals. The Trust actively pursues a range of strategies to increase visibility and awareness of this advanced therapy called CyberKnife.

In collaboration with volunteers, SBT continues to provide support for various events and charitable initiatives, including marshalling at 10km races in Lichfield and Tamworth, the Lichfield Half Marathon, and the "Cars in the Park" event. At Cars in the Park, the Trust operated an informational stall to recruit volunteers and educate attendees about SBT's work and the CyberKnife treatment.

The SBT team also participated in a fundraising challenge across Rajasthan, India. The purpose of the challenge was to recruit new volunteers and encourage independent fundraising thus reaching out to new audiences. Promotion was conducted via the Trusts social media channels and the participants own networks, with live updates provided during the challenge.

Additionally, SBT attended several volunteer fairs at local schools, Lichfield Cathedral, and a music festival. These events facilitated valuable networking opportunities, increased public engagement, and supported ongoing volunteer recruitment. The Trustees are also active participants in local networking groups, regularly attending meetings and engaging with community organizations to deliver presentations about SBT and the CyberKnife treatment.



2 Shaw Road Business Village  
Wolverhampton  
WV10 9LE

[W thestanbowleytrust.org](http://W thestanbowleytrust.org)

[T 01543 222220](tel:01543222220)

[E enquiries@stanbowleytrust.org](mailto:enquiries@stanbowleytrust.org)

07 January 2025

Raising Funds for CyberKnife – Robotic Cancer Treatment

A broad array of events are organized annually to appeal to diverse segments of the community and generate essential funds. Recent activities have included a Go Karting tournament, a golf competition, a spa day, a large coffee morning on World Cancer Day, and quiz nights.

Trustees meet regularly, primarily via virtual platforms, to plan upcoming events and evaluate strategic directions for the Trust's continued growth.

### **Achievements and Performance**

Initially the SBT partnered with Queen Elizabeth Hospital, Birmingham, to assist with fundraising for the acquisition of a CyberKnife machine. This partnership enabled the early purchase of the device, allowing clinical trials to commence ahead of schedule. Notably, some trials have led to the inclusion of head and neck tumour treatments within NHS services, while further studies are ongoing for other tumour types with the intention of submitting findings to NICE for potential NHS adoption.

Through the last year, Trustee Stuart Bravington has resigned as Trustee but remained as a volunteer and the trust advertised and recruited two new Trustees.

### **Current Trustees:**

- Rona Johnson (Chair)
- Matthew Black (Vice Chair)
- Howard Ballantyne (Treasurer)
- Pam Bowley (Secretary)
- Rob Clarke (Trustee)
- Vicki Maye (Trustee)



# The Stan Bowley Trust

Raising Funds for Jenny Bradley (Trustee) Cancer Treatment

Kind regards,  
Rona Johnson  
Chair Trustee

2 Shaw Road Business Village  
Wolverhampton  
WV10 9LE

[W thestanbowleytrust.org](http://thestanbowleytrust.org)

[T 01543 222220](tel:01543222220)

[E enquiries@stanbowleytrust.org](mailto:enquiries@stanbowleytrust.org)

07 January 2025



## Receipts and payments accounts

CC16a

For the period from	01/04/2024	To	31/03/2025
---------------------	------------	----	------------

### Section A Receipts and payments

	Unrestricted funds to the nearest £	Restricted funds to the nearest £	Endowment funds to the nearest £	Total funds to the nearest £	Last year to the nearest £
<b>A1 Receipts</b>					
JUST GIVING	3,600	-	-	3,600	11,811
DONATION	8,014	-	-	8,014	18,325
LOTTERY	4,342	-	-	4,342	5,798
BNI	-	-	-	-	627
BALL	1,616	-	-	1,616	30,071
CREAM TEA	2,555	-	-	2,555	619
KARTING	5,519	-	-	5,519	4,003
GOLF	2,218	-	-	2,218	4,165
SIX OF THE BEST	-	-	-	-	12,305
TREK	-	-	-	-	480
BEETLE	520	-	-	520	-
SUNDRIES	3,269	-	-	3,269	32,543
QUIZ	2,158	-	-	2,158	-
TREK	28,809	-	-	28,809	-
INTEREST RECEIVED	472	-	-	472	678
PAYPAL	-	-	-	-	9,900
<b>Sub total (Gross income for AR)</b>	<b>63,092</b>	<b>-</b>	<b>-</b>	<b>63,092</b>	<b>131,325</b>
<b>A2 Asset and investment sales, (see table).</b>					
	-	-	-	-	-
<b>Sub total</b>	<b>-</b>	<b>-</b>	<b>-</b>	<b>-</b>	<b>-</b>
<b>Total receipts</b>	<b>63,092</b>	<b>-</b>	<b>-</b>	<b>63,092</b>	<b>131,325</b>
<b>A3 Payments</b>					
INSURANCE	470	-	-	470	418
MOBILE PHONE	1,111	-	-	1,111	935
IT	248	-	-	248	186
BNI	995	-	-	995	840
LOTTERY	1,924	-	-	1,924	2,205
STORAGE	-	-	-	-	-
EVENT MANAGEMENT 1743	1,800	-	-	1,800	2,300
CREAM TEA	400	-	-	400	451
TREK	29,376	-	-	29,376	250
KARTING	2,595	-	-	2,595	2,048
GOLF	2,316	-	-	2,316	1,773
SIX OF THE BEST	-	-	-	-	10,652
JUST GIVING	232	-	-	232	234
ADVERT	-	-	-	-	450
BANK CHARGES	97	-	-	97	331
BALL	2,110	-	-	2,110	19,001
PRINT	1,110	-	-	1,110	2,532
SUND	3,069	-	-	3,069	37,903
QUIZ	204	-	-	204	-
DONATION TO QE HOSPITAL	-	-	-	-	32,500
REIMBURSED EXPENSES	5,768	-	-	5,768	2,547
STAFF COSTS	9,000	-	-	9,000	9,492
<b>Sub total</b>	<b>62,825</b>	<b>-</b>	<b>-</b>	<b>62,825</b>	<b>127,048</b>
<b>A4 Asset and investment purchases. (see table)</b>					
	-	-	-	-	-
<b>Sub total</b>	<b>-</b>	<b>-</b>	<b>-</b>	<b>-</b>	<b>-</b>
<b>Total payments</b>	<b>62,825</b>	<b>-</b>	<b>-</b>	<b>62,825</b>	<b>127,048</b>
<b>Net of receipts/(payments)</b>	<b>267</b>	<b>-</b>	<b>-</b>	<b>267</b>	<b>4,277</b>
<b>A5 Transfers between funds</b>	<b>-</b>	<b>-</b>	<b>-</b>	<b>-</b>	<b>-</b>
<b>A6 Cash funds last year end</b>	<b>47,589</b>	<b>-</b>	<b>-</b>	<b>47,589</b>	<b>43,312</b>
<b>Cash funds this year end</b>	<b>47,856</b>	<b>-</b>	<b>-</b>	<b>47,856</b>	<b>47,589</b>

## Section B Statement of assets and liabilities at the end of the period

Categories	Details	Unrestricted funds to nearest £	Restricted funds to nearest £	Endowment funds to nearest £
<b>B1 Cash funds</b>	Cash at bank	44,878	-	-
	Paypal	2,978	-	-
		-	-	-
		-	-	-
	<b>Total cash funds</b>	<b>47,856</b>	<b>-</b>	<b>-</b>
	(agree balances with receipts and payments account(s))	OK	OK	OK

Categories	Details	Unrestricted funds to nearest £	Restricted funds to nearest £	Endowment funds to nearest £
<b>B2 Other monetary assets</b>		-	-	-
		-	-	-
		-	-	-
		-	-	-
		-	-	-
		-	-	-

Categories	Details	Fund to which asset belongs	Cost (optional)	Current value (optional)
<b>B3 Investment assets</b>			-	-
			-	-
			-	-
			-	-
			-	-

Categories	Details	Fund to which asset belongs	Cost (optional)	Current value (optional)
<b>B4 Assets retained for the charity's own use</b>			-	-
			-	-
			-	-
			-	-
			-	-
			-	-
			-	-
			-	-

Categories	Details	Fund to which liability relates	Amount due (optional)	When due (optional)
<b>B5 Liabilities</b>			-	
			-	
			-	
			-	
			-	

Signed by one or two trustees on behalf of all the trustees

Signature	Print Name	Date of approval



**Section A**

**Independent Examiner's Report**

**Report to the trustees/  
members of**

THE STAN BOWLEY TRUST

**On accounts for the year  
ended**

31/3/25

**Charity no  
(if any)**

1144398

**Set out on pages**

1 AND 2

I report to the trustees on my examination of the accounts of the above charity ("the Trust") for the year ended 31 / 03 / 2024.

**Responsibilities and  
basis of report**

As the charity trustees of the Trust, you are responsible for the preparation of the accounts in accordance with the requirements of the Charities Act 2011 ("the Act").

I report in respect of my examination of the Trust's accounts carried out under section 145 of the 2011 Act and in carrying out my examination, I have followed the applicable Directions given by the Charity Commission under section 145(5)(b) of the Act.

**Independent  
examiner's statement**

I have completed my examination. I confirm that no material matters have come to my attention (other than that disclosed below \*) in connection with the examination which gives me cause to believe that in, any material respect:

- accounting records were not kept in accordance with section 130 of the Act or
- the accounts do not accord with the accounting records

I have no concerns and have come across no other matters in connection with the examination to which attention should be drawn in order to enable a proper understanding of the accounts to be reached.

*\* Please delete the words in the brackets if they do not apply.*

**Signed:**

**Date:**

14.1.26

**Name:**

ED HILL

**Relevant professional  
qualification(s) or body  
(if any):**

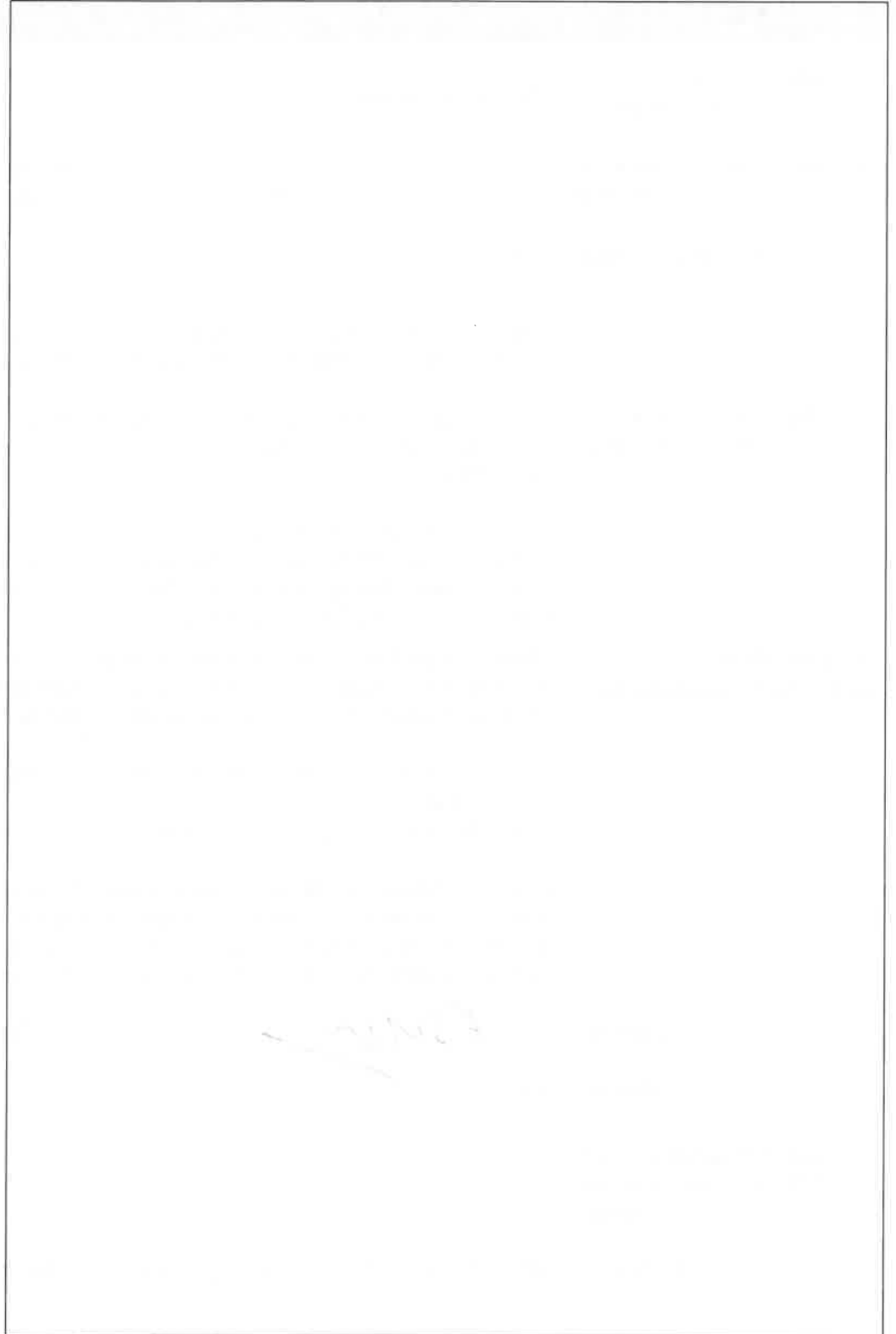
FCCA

**Address:**

AZZURRI HOUSE, WALSALL BUSINESS PARK, ALDRIDGE. WS9 0RB

Only complete if the examiner needs to highlight matters of concern (see CC32, Independent examination of charity accounts: directions and guidance for examiners).

**Give here brief details of any items that the examiner wishes to disclose.**



**THE STAN BOWLEY TRUST**

England & Wales - Charity number 1144398

---

# Accounts

---



# The Stan Bowley Trust

Raising Funds for CyberKnife – Robotic Cancer Treatment

2 Shaw Road Business Village  
Wolverhampton  
WV10 9LE

W [thestanbowleytrust.org](http://thestanbowleytrust.org)  
T 01543 222220  
E [enquiries@stanbowleytrust.org](mailto:enquiries@stanbowleytrust.org)

07 January 2025

Registered number 1144398

## **Aim and Purpose**

The Stan Bowley Trust's (SBT) primary aim is to promote awareness of a cancer treatment called CyberKnife. The SBT's mission is to spread the word about the treatment in the West Midlands area of the United Kingdom. While raising awareness, the SBT will assist in providing equipment and facilities not currently available through statutory authorities. This will help relieve the sickness and preserve the health of cancer patients.

## **Objectives and Activities**

The SBT is committed to ensuring that as many members of the community including professionals are aware of the treatment. The SBT will explore as many avenues as possible to assist with promoting the CyberKnife treatment.

The SBT has continued to work with volunteers to assist other event organisers and charities by providing Marshalls at 10km running races in and around the Lichfield area, the Lichfield half marathon, and Cars in the Park. The Trust also had a stall at the Cars in the Park festival to recruit volunteers and provide information about the trust and the CyberKnife treatment to members of the public who attended the event.

The SBT launched its next challenge and recruited participants to join a cycling challenge in Rajasthan, India. The aim was to recruit new volunteers to get involved in events and organise their own fundraising events, raises awareness with a new audience. The cycle challenge has been promoted via the Trust's social media and each participant's own events and Social Media platforms.

The Trust attended several Volunteer fayres at schools, Lichfield Cathedral and a music festival. These events provided an opportunity to network and raise awareness, plus recruiting volunteers.

Two Trustees are members of networking groups attending regular meetings during the month to continue to spread awareness and get involved in other events.

The Trust attended various events where Trustees or volunteers attended community groups giving presentations about the Trust and the Treatment.





2 Shaw Road Business Village  
Wolverhampton  
WV10 9LE

[W thestanbowleytrust.org](http://thestanbowleytrust.org)

[T 01543 222220](tel:01543222220)

[E enquiries@stanbowleytrust.org](mailto:enquiries@stanbowleytrust.org)

# The Stan Bowley Trust

Raising Funds for CyberKnife – Robotic Cancer Treatment

A variety of activities have been organised to encourage different demographics of society to attend, thus raising awareness and the much-needed funds. These events include, a Go-Karting tournament, the Annual Ball, Golf tournament, a large coffee morning was held on world cancer day and quizzes.

The Trustees meet regularly to discuss future events and activities that the SBT can get involved with and/or organise to achieve their aim and how to progress the Trusts future. The SBT conducts most of these meetings virtually.

## Achievements and Performance

The trustees have worked in partnership with the Queen Elizabeth Hospital, Birmingham initially to assist with the raising the funds to purchase a CyberKnife machine. The CyberKnife machine was purchased in advance of its original date and clinical trials commenced. Some trials have been successful to the point that neck and head tumours are now treated on the NHS. However, trials are ongoing for other tumours located elsewhere on the body with the view to present the findings to NICE to get those tumours treated on the NHS.

The SBT forwarded a cheque for £32 500 to the Queens Hospital to assist with further clinical trials, which had been raised during fundraiser events.

Trustees are as follows:

Rona Johnson	Chair
Pam Bowley	Secretary
Howard Ballantyne	Treasurer
Matthew Black	Trustee
Jenny Bradley	Trustee
Ian Bowley.....	Trustee
Stuart Bravington	Trustee

Regards

Rona Johnson  
Chair Trustee

Ian Bowley  
Stan Bowley Trust

Raising Funds for CyberKnife – Robotic Cancer Treatment

The Stan Bowley Trust is a registered Charity Number 1144398





**Receipts and payments accounts**

CC16a

For the period from	4/1/2023	To	3/31/2024
---------------------	----------	----	-----------

**Section A Receipts and payments**

	Unrestricted funds to the nearest £	Restricted funds to the nearest £	Endowment funds to the nearest £	Total funds to the nearest £	Last year to the nearest £
<b>A1 Receipts</b>					
JUST GIVING	11,811	-	-	11,811	7,765
DONATION	18,325	-	-	18,325	7,693
LOTTERY	5,798	-	-	5,798	3,888
BNI	627	-	-	627	115
BALL	30,071	-	-	30,071	28,665
CREAM TEA	619	-	-	619	383
KARTING	4,003	-	-	4,003	3,025
GOLF	4,165	-	-	4,165	2,249
SIX OF THE BEST	12,305	-	-	12,305	248
TREK	480	-	-	480	638
CHRISTMAS SALE	-	-	-	-	81
SUNDRIES	32,543	-	-	32,543	21,362
INTEREST RECEIVED	678	-	-	678	212
PAYPAL	9,900	-	-	9,900	14,000
<b>Sub total (Gross income for AR)</b>	<b>131,325</b>	<b>-</b>	<b>-</b>	<b>131,325</b>	<b>90,324</b>
<b>A2 Asset and investment sales, (see table).</b>					
	-	-	-	-	-
	-	-	-	-	-
<b>Sub total</b>	<b>-</b>	<b>-</b>	<b>-</b>	<b>-</b>	<b>-</b>
<b>Total receipts</b>	<b>131,325</b>	<b>-</b>	<b>-</b>	<b>131,325</b>	<b>90,324</b>
<b>A3 Payments</b>					
INSURANCE	418	-	-	418	390
MOBILE PHONE	935	-	-	935	764
IT	186	-	-	186	127
BNI	840	-	-	840	770
LOTTERY	2,205	-	-	2,205	2,007
STORAGE	-	-	-	-	360
EVENT MANAGEMENT 1743	2,300	-	-	2,300	1,800
CREAM TEA	451	-	-	451	200
TREK	250	-	-	250	16,738
KARTING	2,048	-	-	2,048	1,864
GOLF	1,773	-	-	1,773	2,024
SIX OF THE BEST	10,652	-	-	10,652	-
JUST GIVING	234	-	-	234	360
ADVERT	450	-	-	450	128
BANK CHARGES	331	-	-	331	596
BALL	19,001	-	-	19,001	16,867
PRINT	2,532	-	-	2,532	2,029
SUND	37,903	-	-	37,903	17,411
DONATION TO QE HOSPITAL	32,500	-	-	32,500	30,000
REIMBURSED EXPENSES	2,547	-	-	2,547	4,874
STAFF COSTS	9,492	-	-	9,492	8,500
<b>Sub total</b>	<b>127,048</b>	<b>-</b>	<b>-</b>	<b>127,048</b>	<b>107,809</b>
<b>A4 Asset and investment purchases, (see table)</b>					
	-	-	-	-	-
	-	-	-	-	-
<b>Sub total</b>	<b>-</b>	<b>-</b>	<b>-</b>	<b>-</b>	<b>-</b>
<b>Total payments</b>	<b>127,048</b>	<b>-</b>	<b>-</b>	<b>127,048</b>	<b>107,809</b>
<b>Net of receipts/(payments)</b>	<b>4,277</b>	<b>-</b>	<b>-</b>	<b>4,277</b>	<b>- 17,485</b>
<b>A5 Transfers between funds</b>	<b>-</b>	<b>-</b>	<b>-</b>	<b>-</b>	<b>-</b>
<b>A6 Cash funds last year end</b>	<b>43,312</b>	<b>-</b>	<b>-</b>	<b>43,312</b>	<b>60,797</b>
<b>Cash funds this year end</b>	<b>47,589</b>	<b>-</b>	<b>-</b>	<b>47,589</b>	<b>43,312</b>

## Section B Statement of assets and liabilities at the end of the period

Categories	Details	Unrestricted funds to nearest £	Restricted funds to nearest £	Endowment funds to nearest £
<b>B1 Cash funds</b>	Cash at bank	44,705	-	-
	Paypal	2,884	-	-
		-	-	-
		-	-	-
	<b>Total cash funds</b>	<b>47,589</b>	<b>-</b>	<b>-</b>
	(agree balances with receipts and payments account(s))	OK	OK	OK

Categories	Details	Unrestricted funds to nearest £	Restricted funds to nearest £	Endowment funds to nearest £
<b>B2 Other monetary assets</b>		-	-	-
		-	-	-
		-	-	-
		-	-	-
		-	-	-
		-	-	-

Categories	Details	Fund to which asset belongs	Cost (optional)	Current value (optional)
<b>B3 Investment assets</b>			-	-
			-	-
			-	-
			-	-
			-	-

Categories	Details	Fund to which asset belongs	Cost (optional)	Current value (optional)
<b>B4 Assets retained for the charity's own use</b>			-	-
			-	-
			-	-
			-	-
			-	-
			-	-
			-	-
			-	-
			-	-

Categories	Details	Fund to which liability relates	Amount due (optional)	When due (optional)
<b>B5 Liabilities</b>			-	
			-	
			-	
			-	
			-	

Signed by one or two trustees on behalf of all the trustees

Signature	Print Name	Date of approval



**Section A**

**Independent Examiner's Report**

**Report to the trustees/  
members of**

THE STAN BOWLEY TRUST

**On accounts for the year  
ended**

31/3/24

**Charity no  
(if any)**

1144398

**Set out on pages**

1 AND 2

I report to the trustees on my examination of the accounts of the above charity ("the Trust") for the year ended 31 / 03 / 2024.

**Responsibilities and  
basis of report**

As the charity trustees of the Trust, you are responsible for the preparation of the accounts in accordance with the requirements of the Charities Act 2011 ("the Act").

I report in respect of my examination of the Trust's accounts carried out under section 145 of the 2011 Act and in carrying out my examination, I have followed the applicable Directions given by the Charity Commission under section 145(5)(b) of the Act.

**Independent  
examiner's statement**

I have completed my examination. I confirm that no material matters have come to my attention (other than that disclosed below \*) in connection with the examination which gives me cause to believe that in, any material respect:

- accounting records were not kept in accordance with section 130 of the Act or
- the accounts do not accord with the accounting records

I have no concerns and have come across no other matters in connection with the examination to which attention should be drawn in order to enable a proper understanding of the accounts to be reached.

*\* Please delete the words in the brackets if they do not apply.*

**Signed:**

**Date:**

15/1/25

**Name:**

ED HILL

**Relevant professional  
qualification(s) or body  
(if any):**

FCCA

**Address:**

AZZURRI HOUSE, WALSALL BUSINESS PARK, ALDRIDGE. WS9 0RB

**THE STAN BOWLEY TRUST**

England & Wales - Charity number 1144398

---

# Accounts

---



1 Southwark Close  
Lichfield  
WS13 7SH

# The Stan Bowley Trust

Raising Funds for CyberKnife – Robotic Cancer Treatment

W [thestanbowleytrust.org](http://thestanbowleytrust.org)

T 07952 319 390

E [enquiries.stanbowleytrust@gmail.com](mailto:enquiries.stanbowleytrust@gmail.com)

The Stan Bowley Trust,  
1 Southwark Close  
Staffordshire  
WS13 7SH

Registered number 1144398.  
Lichfield

## Aim and Purpose

The Stan Bowley Trust's (SBT) primary aim is to promote the awareness of a cancer treatment called CyberKnife. The SBT's mission is to spread the word of the treatment in the West Midlands area of the United Kingdom. Whilst raising the awareness the SBT will assist in the provision of equipment and facilities not currently available through statutory authorities. This in turn will help to relieve the sickness and preserve the health of cancer patients.

## Objectives and Activities

The SBT is committed to ensuring that as many members of the community including professionals are aware of the treatment. The SBT will explore as many avenues as possible to assist with promoting the CyberKnife treatment.

The SBT has continued by providing Marshalls Park. The Trust also has provide information about who attended the event.

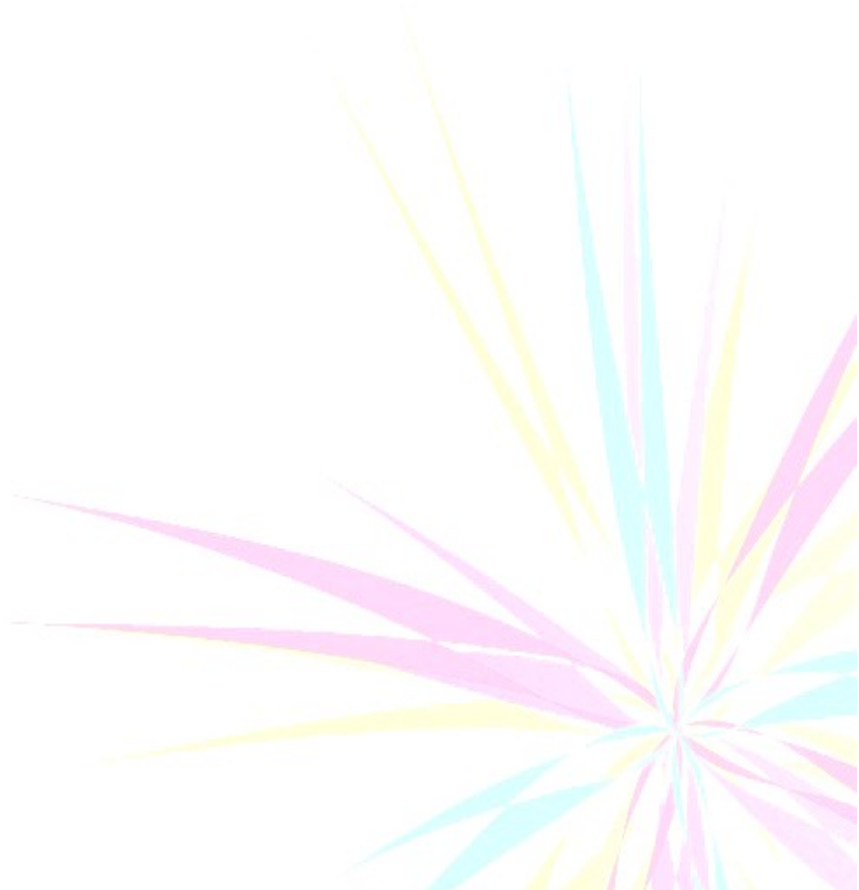
Previously a trek across the area therefore arranged events to raise the area therefore enal to the Pandemic. Some and raise the awareness.

The Trust attended several festival. These events help recruiting volunteers.

The Trust held various presentations about the

Raising Funds for CyberKnife –

The Stan Bowley Trust is  
Number 11.





1 Southwark Close  
Lichfield  
WS13 7SH

# The Stan Bowley Trust

Raising Funds for CyberKnife – Robotic Cancer Treatment

W [thestanbowleytrust.org](http://thestanbowleytrust.org)

T 07952 319 390

E [enquiries.stanbowleytrust@gmail.com](mailto:enquiries.stanbowleytrust@gmail.com)

The trustees held stalls at various events and fetes

During the Christmas period the Trust organised a Christmas Cream Tea and attended a local Christmas Fayre where handmade crafts were sold.

A large coffee morning was held for world cancer day and the Trust held their annual events, those being the Golf Tournament Day, go-karting, Christmas cream tea and Annual Ball.

A group of supporters organised their own challenge and took part in the three peaks challenge to raise funds and awareness.

The Trustees meet regularly to discuss future events and activities that the SBT can get involved with and/or organise to achieve their aim and how to progress the Trust's future. The SBT continue to conduct most of these meetings virtually.

## Achievements and Performance

The trustees have worked in partnership with the Queen Elizabeth Hospital, Birmingham initially to assist with the raising of funds to purchase a CyberKnife machine. The CyberKnife machine was purchased in advance of its original date and clinical trials commenced. Some trials have been successful to the point that neck and head tumours are now treated on the NHS. However, trials are ongoing for other tumours located elsewhere on the body with the view to the NHS.

The SBT forwarded a clinical trial, which has

Trustees are as follows

Rona Johnson  
Pam Bowley  
Howard Ballantyne  
Rebecca Louise Bowley

Ian Bowley.....

Kate Board  
Stuart Bravington

Raising Funds for CyberKnife –

The Stan Bowley Trust is  
Number 11.





1 Southwark Close  
Lichfield  
WS13 7SH

# The Stan Bowley Trust

Raising Funds for CyberKnife – Robotic Cancer Treatment

W [thestanbowleytrust.org](http://thestanbowleytrust.org)

T 07952 319 390

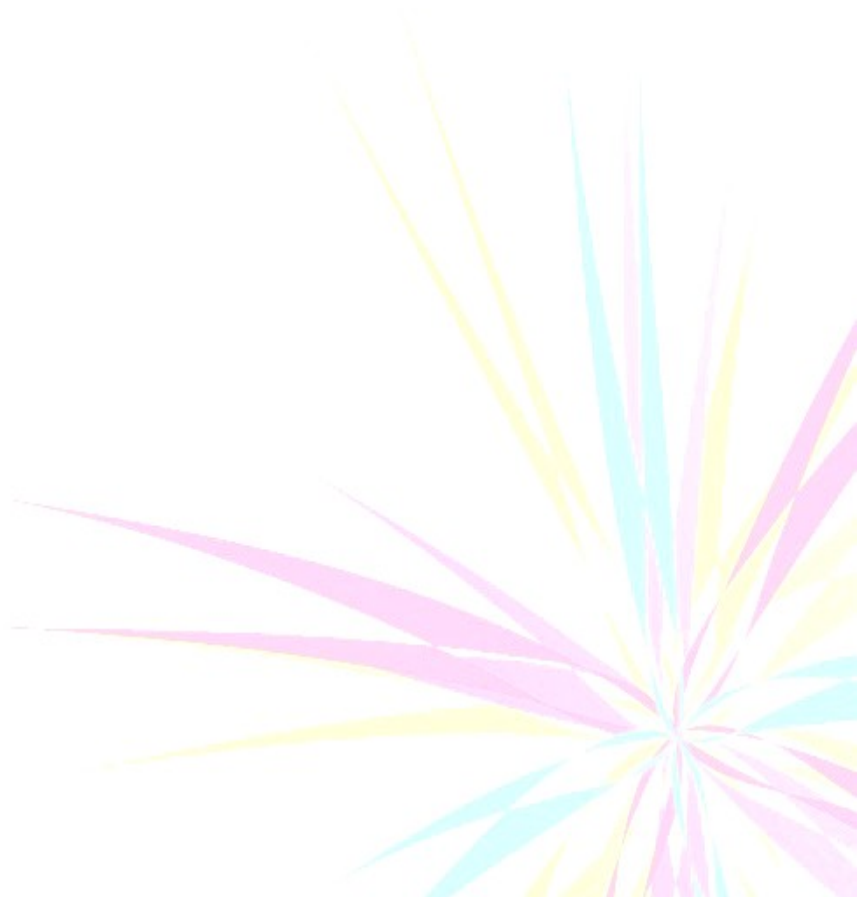
E [enquiries.stanbowleytrust@gmail.com](mailto:enquiries.stanbowleytrust@gmail.com)

Regards

Rona Johnson

Chair Trustee

The Stan Bowley Trust



Raising Funds for CyberKnife –

The Stan Bowley Trust is  
Number 11.



## Receipts and payments accounts

CC16a

For the period from	01/04/2022	To	31/03/2023
---------------------	------------	----	------------

### Section A Receipts and payments

	Unrestricted funds to the nearest £	Restricted funds to the nearest £	Endowment funds to the nearest £	Total funds to the nearest £	Last year to the nearest £
<b>A1 Receipts</b>					
JUST GIVING	7,765	-	-	7,765	14,264
DONATION	7,693	-	-	7,693	7,642
LOTTERY	3,888	-	-	3,888	3,817
BNI	115	-	-	115	32
BALL	28,665	-	-	28,665	37,995
CREAM TEA	383	-	-	383	935
KARTING	3,025	-	-	3,025	4,004
GOLF	2,249	-	-	2,249	3,550
SIX OF THE BEST	248	-	-	248	40
TREK	638	-	-	638	1,477
CHRISTMAS SALE	81	-	-	81	-
SUNDRIES	21,362	-	-	21,362	9,552
INTEREST RECEIVED	212	-	-	212	12
PAYPAL	14,000	-	-	14,000	-
<b>Sub total (Gross income for AR)</b>	<b>90,324</b>	<b>-</b>	<b>-</b>	<b>90,324</b>	<b>83,320</b>
<b>A2 Asset and investment sales, (see table).</b>					
	-	-	-	-	-
	-	-	-	-	-
<b>Sub total</b>	<b>-</b>	<b>-</b>	<b>-</b>	<b>-</b>	<b>-</b>
<b>Total receipts</b>	<b>90,324</b>	<b>-</b>	<b>-</b>	<b>90,324</b>	<b>83,320</b>
<b>A3 Payments</b>					
INSURANCE	390	-	-	390	-
MOBILE PHONE	764	-	-	764	674
IT	127	-	-	127	198
BNI	770	-	-	770	935
LOTTERY	2,007	-	-	2,007	2,171
STORAGE	360	-	-	360	-
EVENT MANAGEMENT 1743	1,800	-	-	1,800	1,650
CREAM TEA	200	-	-	200	85
TREK	16,738	-	-	16,738	3,171
KARTING	1,864	-	-	1,864	2,585
GOLF	2,024	-	-	2,024	1,410
JUST GIVING	360	-	-	360	418
ADVERT	128	-	-	128	2,000
BANK CHARGES	596	-	-	596	612
BALL	16,867	-	-	16,867	26,275
PRINT	2,029	-	-	2,029	1,918
SUND	17,411	-	-	17,411	1,269
DONATION TO QE HOSPITAL	30,000	-	-	30,000	25,000
REIMBURSED EXPENSES	4,874	-	-	4,874	-
STAFF COSTS	8,500	-	-	8,500	-
<b>Sub total</b>	<b>107,809</b>	<b>-</b>	<b>-</b>	<b>107,809</b>	<b>70,371</b>
<b>A4 Asset and investment purchases, (see table)</b>					
	-	-	-	-	-
	-	-	-	-	-
<b>Sub total</b>	<b>-</b>	<b>-</b>	<b>-</b>	<b>-</b>	<b>-</b>
<b>Total payments</b>	<b>107,809</b>	<b>-</b>	<b>-</b>	<b>107,809</b>	<b>70,371</b>
<b>Net of receipts/(payments)</b>	<b>- 17,485</b>	<b>-</b>	<b>-</b>	<b>- 17,485</b>	<b>12,949</b>
<b>A5 Transfers between funds</b>	<b>-</b>	<b>-</b>	<b>-</b>	<b>-</b>	<b>-</b>
<b>A6 Cash funds last year end</b>	<b>60,797</b>	<b>-</b>	<b>-</b>	<b>60,797</b>	<b>47,848</b>
<b>Cash funds this year end</b>	<b>43,312</b>	<b>-</b>	<b>-</b>	<b>43,312</b>	<b>60,797</b>

## Section B Statement of assets and liabilities at the end of the period

Categories	Details	Unrestricted funds to nearest £	Restricted funds to nearest £	Endowment funds to nearest £
<b>B1 Cash funds</b>	Cash at bank	43,312	-	-
		-	-	-
		-	-	-
	<b>Total cash funds</b>	<b>43,312</b>	<b>-</b>	<b>-</b>

(agree balances with receipts and payments account(s))

OK

OK

OK

Details	Unrestricted funds to nearest £	Restricted funds to nearest £	Endowment funds to nearest £
<b>B2 Other monetary assets</b>	-	-	-
	-	-	-
	-	-	-
	-	-	-
	-	-	-
	-	-	-

Details	Fund to which asset belongs	Cost (optional)	Current value (optional)
<b>B3 Investment assets</b>		-	-
		-	-
		-	-
		-	-
		-	-

Details	Fund to which asset belongs	Cost (optional)	Current value (optional)
<b>B4 Assets retained for the charity's own use</b>		-	-
		-	-
		-	-
		-	-
		-	-
		-	-
		-	-
		-	-

Details	Fund to which liability relates	Amount due (optional)	When due (optional)
<b>B5 Liabilities</b>		-	
		-	
		-	
		-	
		-	

Signed by one or two trustees on behalf of all the trustees

Signature	Print Name	Date of approval



**Section A**

**Independent Examiner's Report**

**Report to the trustees/  
members of**

THE STAN BOWLEY TRUST

**On accounts for the year  
ended**

31 MARCH 2023

**Charity no  
(if any)**

1144398

**Set out on pages**

1 AND 2

(remember to include the page numbers of additional sheets)

I report to the trustees on my examination of the accounts of the above charity ("the Trust") for the year ended DD / MM / YYYY.

**Responsibilities and  
basis of report**

As the charity trustees of the Trust, you are responsible for the preparation of the accounts in accordance with the requirements of the Charities Act 2011 ("the Act").

I report in respect of my examination of the Trust's accounts carried out under section 145 of the 2011 Act and in carrying out my examination, I have followed the applicable Directions given by the Charity Commission under section 145(5)(b) of the Act.

**Independent  
examiner's statement**

I have completed my examination. I confirm that no material matters have come to my attention (other than that disclosed below \*) in connection with the examination which gives me cause to believe that in, any material respect:

- accounting records were not kept in accordance with section 130 of the Act or
- the accounts do not accord with the accounting records

I have no concerns and have come across no other matters in connection with the examination to which attention should be drawn in order to enable a proper understanding of the accounts to be reached.

*\* Please delete the words in the brackets if they do not apply.*

**Signed:**

**Date:**

14/12/23

**Name:**

ED HILL

**Relevant professional  
qualification(s) or body  
(if any):**

FCCA

**Address:**

AZZURRI HOUSE, WALSALL BUSINESS PARK, ALDRIDGE WS9 0RB.

Only complete if the examiner needs to highlight matters of concern (see CC32, Independent examination of charity accounts: directions and guidance for examiners).

**Give here brief details of any items that the examiner wishes to disclose.**

**THE STAN BOWLEY TRUST**

England & Wales - Charity number 1144398

---

# Accounts

---



The Stan Bowley Trust,  
1 Southwark Close  
Lichfield  
Staffordshire  
WS13 7SH

registered number 1144398.

### **Aim and Purpose**

The Stan Bowley Trust's (SBT) primary aim is to promote the awareness of a cancer treatment called Cyberknife. The SBT's mission is to spread the word of the treatment in the West Midlands area of the United Kingdom. Whilst raising the awareness the SBT will assist in the provision of equipment and facilities not currently available through statutory authorities. This in turn will help to relieve the sickness and preserve the health of cancer patients.

### **Objectives and Activities**

The SBT is committed to ensuring that as many members of the community including professionals are aware of the treatment. The SBT will explore as many avenues as possible to assist with promoting the CyberKnife treatment.

The previous year a trek across the Pyrenees had been organised for 2020, whereby volunteers arrange events to raise funds and take part in the challenge. The trekkers are spread around the area therefore enabling a wider audience. The trek again was postponed until 2022 due to the Pandemic. Some of the trekkers who signed up to the Trek have continued to fundraise and raise the awareness with their own events and meeting via zoom continued to take place in relation to the trek and fundraising.

From April 2021 the trust resumed planned events organised by the trust and resumed commitments to assist other organisations to act as Marshalls and car parking assistants. A challenge called Best Foot forward took place over 18 days, whereby supporters signed up to collectively cover mileage sufficient to go around the world, by person power. Eg, walking, running, cycling, mowing lawns etc at the same time being sponsored.

Online events continued to take place such as the mystery walk, these Mystery walks were designed by the trust with the aid of a local guide to give people in lock down a different route to take on a short walk as part of their daily exercise. Route and clues were downloaded off the website.

1 Southwark Close  
Lichfield  
Staffordshire  
WS13 7SH

**W:** [thestanbowleytrust.org](http://thestanbowleytrust.org)  
**T:** 07952 319390  
**E:** [enquiries.stanbowleytrust@gmail.com](mailto:enquiries.stanbowleytrust@gmail.com)



The SBT assisted other charities and event organisers by providing Marshalls at 10km running races, Lichfield half marathon and Cars in the Park.

The Trust held various events where Trustees or volunteers attended community groups and other charities giving presentations about the Trust and the Treatment.

During the Christmas period the Trust organised a Christmas Fayre: also attending one where they held a tombola stall.

Some Trustees organised a coffee morning for world cancer day and encouraged other companies and organisations to hold one.

Trust resumed their annual events, those being the Golf Tournament Day, Go-karting, Christmas cream tea and Annual Ball.

A trek to Finland was undertaken by a trekker who could not attend the new date of the Pyrenees Trek.

The Trustees meet regularly to discuss and plan future events and activities that the SBT can get involved with and/or organise to achieve their aim and progress the with the SBT in the future. Most of these meetings are held virtually.

The SBT will continue to raise funds and awareness in relation to the Queen Elizabeth Hospital for them to proceed with Clinical trials.

### **Achievements and Performance**

The trustees have worked in partnership with the Queen Elizabeth Hospital, Birmingham initially to assist with the raising the funds to purchase a CyberKnife machine. The CyberKnife machine was purchased in advance of its original date and clinical trials commenced. Some trials have been successful to the point that neck and head tumours are now treated on the NHS. However, trials are ongoing for other tumours located elsewhere on the body with the view to present the findings to NICE in order to get those tumours treated on the NHS.

The SBT forwarded a cheque for £25 000 to the Queens Hospital to assist with further clinical trials, which had been raised during fundraiser events.



During 2021 several Trustees resigned from the role due to their work commitments these Trustees remained involved in a volunteer basis and continue to support the Charity on a regular basis. As a result, two new Trustees were recruited.

The Trustees are as Follows:

Rona Johnson	Chair
Pam Bowley	Secretary
Howard Ballantyne	Treasurer
Ian Bowley	Trustee
Rebecca Louise Bowley	Trustee
Katherine Board	Trustee
Stuart Bravington	Trustee

Rona Johnson  
Chair

1 Southwark Close  
Lichfield  
Staffordshire  
WS13 7SH

W: [thestanbowleytrust.org](http://thestanbowleytrust.org)  
T: 07952 319390  
E: [enquiries.stanbowleytrust@gmail.com](mailto:enquiries.stanbowleytrust@gmail.com)



## Receipts and payments accounts

CC16a

For the period from	01/04/2021	To	31/03/2022
---------------------	------------	----	------------

### Section A Receipts and payments

	Unrestricted funds to the nearest £	Restricted funds to the nearest £	Endowment funds to the nearest £	Total funds to the nearest £	Last year to the nearest £
<b>A1 Receipts</b>					
JUST GIVING	14,264	-	-	14,264	13,475
DONATION	7,642	-	-	7,642	2,270
LOTTERY	3,817	-	-	3,817	3,503
BNI	32	-	-	32	419
BALL	37,995	-	-	37,995	-
CREAM TEA	935	-	-	935	-
KARTING	4,004	-	-	4,004	-
GOLF	3,550	-	-	3,550	-
SIX OF THE BEST	40	-	-	40	-
TREK	1,477	-	-	1,477	2,087
CHRISTMAS SALE	-	-	-	-	45
SUNDRIES	9,552	-	-	9,552	2,784
INTEREST RECEIVED	12	-	-	12	19
	-	-	-	-	-
<b>Sub total (Gross income for AR)</b>	<b>83,320</b>	<b>-</b>	<b>-</b>	<b>83,320</b>	<b>24,601</b>
<b>A2 Asset and investment sales, (see table).</b>					
	-	-	-	-	-
	-	-	-	-	-
<b>Sub total</b>	<b>-</b>	<b>-</b>	<b>-</b>	<b>-</b>	<b>-</b>
<b>Total receipts</b>	<b>83,320</b>	<b>-</b>	<b>-</b>	<b>83,320</b>	<b>24,601</b>
<b>A3 Payments</b>					
INSURANCE	-	-	-	-	351
MOBILE PHONE	674	-	-	674	1,041
IT	198	-	-	198	438
BNI	935	-	-	935	90
LOTTERY	2,171	-	-	2,171	1,865
STORAGE	-	-	-	-	2,370
EVENT MANAGEMENT 1743	1,650	-	-	1,650	1,800
CREAM TEA	85	-	-	85	-
TREK	3,171	-	-	3,171	-
KARTING	2,585	-	-	2,585	-
GOLF	1,410	-	-	1,410	-
JUST GIVING	418	-	-	418	216
ADVERT	2,000	-	-	2,000	-
BANK CHARGES	612	-	-	612	360
BALL	26,275	-	-	26,275	87
PRINT	1,918	-	-	1,918	6
SUND	1,269	-	-	1,269	912
DONATION TO QE HOSPITAL	25,000	-	-	25,000	10,000
CHRISTMAS FAYRE	-	-	-	-	100
	-	-	-	-	-
<b>Sub total</b>	<b>70,371</b>	<b>-</b>	<b>-</b>	<b>70,371</b>	<b>19,635</b>
<b>A4 Asset and investment purchases, (see table)</b>					
	-	-	-	-	-
	-	-	-	-	-
<b>Sub total</b>	<b>-</b>	<b>-</b>	<b>-</b>	<b>-</b>	<b>-</b>
<b>Total payments</b>	<b>70,371</b>	<b>-</b>	<b>-</b>	<b>70,371</b>	<b>19,635</b>
<b>Net of receipts/(payments)</b>	<b>12,949</b>	<b>-</b>	<b>-</b>	<b>12,949</b>	<b>4,966</b>
<b>A5 Transfers between funds</b>	<b>-</b>	<b>-</b>	<b>-</b>	<b>-</b>	<b>-</b>
<b>A6 Cash funds last year end</b>	<b>47,848</b>	<b>-</b>	<b>-</b>	<b>47,848</b>	<b>42,882</b>
<b>Cash funds this year end</b>	<b>60,797</b>	<b>-</b>	<b>-</b>	<b>60,797</b>	<b>47,848</b>

## Section B Statement of assets and liabilities at the end of the period

Categories	Details	Unrestricted funds to nearest £	Restricted funds to nearest £	Endowment funds to nearest £
<b>B1 Cash funds</b>	Cash at bank	60,797	-	-
		-	-	-
		-	-	-
	<b>Total cash funds</b>	<b>60,797</b>	<b>-</b>	<b>-</b>

(agree balances with receipts and payments account(s))

OK                      OK                      OK

Categories	Details	Unrestricted funds to nearest £	Restricted funds to nearest £	Endowment funds to nearest £
<b>B2 Other monetary assets</b>		-	-	-
		-	-	-
		-	-	-
		-	-	-
		-	-	-
		-	-	-

Categories	Details	Fund to which asset belongs	Cost (optional)	Current value (optional)
<b>B3 Investment assets</b>			-	-
			-	-
			-	-
			-	-
			-	-

Categories	Details	Fund to which asset belongs	Cost (optional)	Current value (optional)
<b>B4 Assets retained for the charity's own use</b>			-	-
			-	-
			-	-
			-	-
			-	-
			-	-
			-	-
			-	-

Categories	Details	Fund to which liability relates	Amount due (optional)	When due (optional)
<b>B5 Liabilities</b>			-	
			-	
			-	
			-	
			-	

Signed by one or two trustees on behalf of all the trustees

Signature	Print Name	Date of approval



**Section A**

**Independent Examiner's Report**

**Report to the trustees/  
members of**

Charity Name  
**THE STAN BOWLEY TRUST**

**On accounts for the year  
ended**

**31 MARCH 2022**

**Charity no  
(if any)**

**1144398**

**Set out on pages**

**1 AND 2**

*(remember to include the page numbers of additional sheets)*

I report to the trustees on my examination of the accounts of the above charity ("the Trust") for the year ended **31 MARCH 2022**.

**Responsibilities and  
basis of report**

As the charity trustees of the Trust, you are responsible for the preparation of the accounts in accordance with the requirements of the Charities Act 2011 ("the Act").

I report in respect of my examination of the Trust's accounts carried out under section 145 of the 2011 Act and in carrying out my examination, I have followed the applicable Directions given by the Charity Commission under section 145(5)(b) of the Act.

**Independent  
examiner's statement**

I have completed my examination. I confirm that no material matters have come to my attention (other than that disclosed below \*) in connection with the examination which gives me cause to believe that in, any material respect:

- accounting records were not kept in accordance with section 130 of the Act or
- the accounts do not accord with the accounting records

I have no concerns and have come across no other matters in connection with the examination to which attention should be drawn in order to enable a proper understanding of the accounts to be reached.

*\* Please delete the words in the brackets if they do not apply.*

**Signed:**

*ESH*

**Date:**

**13/01/23**

**Name:**

**EDWARD HILL**

**Relevant professional  
qualification(s) or body  
(if any):**

**FCCA**

**Address:**

**AZZURRI HOUSE, WALSALL BUSINESS PARK, ALDRIDGE, WS9 0RB.**