



Fleet Phoenix

Empowering Young People To Thrive

Fleet Phoenix Trustee Annual Business Report 2022-23



Fleet

Phoenix

@fleetphoenix.co.uk

0161 275 1111



@FleetPhoenix

Empowering Young People To Thrive

Registered Charity 1144057

The Management Committee presents its Trustee' report and audited financial statements for the year ended 31 March 2023

Reference and Administrative Information Charity Name: Fleet Phoenix

Charity registration number: 1144057

Registered Office and operational address: The Point Youth Centre, Harlington way, Fleet, Hants. GU51 4BP.

Board Of trustees: Mr Brian Coney (Treasurer), Miss Sonja Gahan (Left October 2022) , Mr Andrew Kern, Martin Smith (Chair from Nov 2021). Sabrina Marnham (Joined July 21), Cat Cooke (Joined July 21), Tierney Blakemore (Joined Oct 21), Denise Roch (Joined January 2021).

Secretary: Mrs Gemma Santiago

Chief Executive: Mrs Charlotte Tickner

Auditors – Mr J Geering

Bankers – Barclays Bank, Fleet Road, Fleet



Board of Trustees Report

Throughout 2022/23, Fleet Phoenix continued to provide its much-needed services to the local community and did so with aplomb. There remained many instances where we had families on the at-risk register, and we continued to support young people with their issues around mental health and self-harming amongst many others. The number of cases increased year-on-year and out-paced the relatively more modest increase in resources – it remains a constant battle to provide the necessary support with the available resources. One clear example was on Open Door service that received so many referrals throughout the year that it led to an increased waiting list even though we have 160 open sessions with more than 1,400 hours of face-to-face time. Open Door was just one part of the whole of Fleet Phoenix's services which saw almost 350 open sessions, 4,700 hours of face-to-face time and 2,500 client contacts.

Available resources are dictated by our income. In 2022/23, our income was £110k, a very healthy 25% increase on the previous year, but this was matched by costs of £112K, which has increased 10% year-on-year. The net effect was a loss of £2K in the year which was smaller than the £9K loss in the previous year. Both years ate into our cash and reserves which ended 2022/23 at £44K, which was not ideal but still very manageable.

The £110K of income came from the efforts of our fantastic volunteers and supporters. Many of our supporters who provide grants do so because they require the services we provide, and these simply are not available without Fleet Phoenix. Grants were received from local district, town, and parish councils, along with local schools, civic service clubs and wider foundations. Donations in the form of money, food, clothing, and Christmas gifts came from the local community as well as supermarkets. Fundraising was undertaken by numerous volunteers and trustees. Our thanks go out to all of them.

The team delivered both their usual range of projects as well as some new ones; projects included SCAM Jam, The Lea summer project, our first presence at LowdeFest delivering a Youth Zone (a music tent for young people to have a go) and more of the very popular Lego clubs. There was no Zebon summer project due to illnesses that impacted resourcing over the summer, thankfully all was well later in the year. To end the calendar year, the Christmas music concert returned after a two-year break and the massive 750 Christmas toy donations were all wrapped and delivered.

There were several changes with the team with new trustees and volunteers joining to replace those who departed. The whole team, old and new, did a fantastic job throughout the year and we thank each and every one of them.

The year concluded with Fleet Phoenix's Managing Director, Charlotte Tickner, receiving the Lions International Melvin Jones Fellowship award which recognises outstanding individuals for their exemplary service to their community by bestowing on them an award that is named for its founder and is the highest form of recognition and embodies humanitarian ideas consistent with the nature and purpose of Lionism. Our congratulations to Charlotte.

Martin Smith – Chair

On behalf of The Board of Trustees



Fleet Phoenix Aims and Objectives

Fleet Phoenix became a constituted and registered Charity in September 2011. We are registered with the Charity Commission. No: 1144057

Aims:

The aims of the group shall be to:

- ✓ Empower the community to take responsibility and solve problems locally.
- ✓ Encourage the breakdown of barriers to holistic community participation.

Objectives:

To act as a resource for young people up to the age of 25, living in Fleet and the surrounding areas by providing advice and assistance, organising programmes of physical, educational, and other activities as a means of:

- ✓ Advancing in life and helping young people by developing their skills, capacities, and capabilities to enable them to participate in society as independent, mature and responsible individuals.
 - ✓ Advancing education.
 - ✓ Relieving unemployment; and
- ✓ Providing recreational and leisure time activities in the interest of social welfare, designed to improve their conditions of life.



Accounts 2022-23

Unrestricted funds

Restricted funds

Total funds

A1 Receipts

| | | | |
|--|---------------|---------------|----------------|
| Grants | 26,647 | 26,120 | 65,767 |
| Fund Raising | 1,994 | | 5,303 |
| Donations | 25,018 | | 30,382 |
| Sashas fund | 411 | | 176 |
| Other | 270 | | |
| Savings interest | 5 | | 57 |
| Courtmoor | 4,583 | | 5,417 |
| zebon Outreach | 2,977 | | |
| HYPE | | | 2,824 |
| HMRC | 328 | | |
| COVID | | | - |
| Sub total (Gross income for AR) | 62,233 | 26,120 | 109,926 |

A3 Payments

| | | | |
|------------------------|--------|--------|--------|
| Salaries | 56,365 | 17,974 | 87,326 |
| Fund Raising | 540 | | 1,229 |
| Marketing & promotions | 3,020 | | 495 |
| Daytime Projects | 234 | | 68 |
| Evening Projects | 1,755 | | 2,223 |
| Summer Projects | | 3,419 | 3,668 |
| H&S | 1,018 | | 889 |
| Cash Float | 170 | | 50 |
| Maintenance & Repairs | 67 | | 100 |
| Licences | 1,871 | | 1,906 |
| Insurance | 2,569 | | 2,581 |

| | | | |
|------------------|---------------|---------------|----------------|
| Phone/Broadband | 985 | | 1,028 |
| Office | 1,650 | | 1,024 |
| Rent | 1,200 | | 1,426 |
| Staff Training | | 567 | 324 |
| Sundry expences | 402 | | 1,263 |
| Sasha Fund | 348 | | 144 |
| Minibus | 1,302 | | 1,506 |
| COVID | | 382 | |
| Wenceslas | | 1,257 | 320 |
| Xmas Toys | 348 | | 164 |
| HYPE | | | 4,568 |
| Sub total | 73,844 | 23,599 | 112,302 |

Total payments

| | | |
|--------|--------|---------|
| 73,844 | 23,599 | 112,302 |
|--------|--------|---------|

Net of receipts/(payments)

| | | |
|--|--|-------|
| | | - |
| | | 2,376 |

A5 Transfers between funds

| | | |
|--|--|---|
| | | - |
|--|--|---|

A6 Cash funds last year end

| | | |
|--|--|--------|
| | | 46,565 |
|--|--|--------|

Cash funds this year end

| | | |
|---|--|--------|
| - | | 44,189 |
|---|--|--------|

Categories

Details

Unrestricted funds

Restricted funds

B1 Cash funds

| |
|---------------------|
| Unpresented cheques |
| Current Account |
| savings account |

| |
|--------|
| |
| 14,191 |
| 29,998 |
| 44,189 |

| |
|--|
| |
| |
| |
| |

Total cash funds

Funders and Supporters

2022-23 has been an exceptionally difficult year for everyone in our community and the effects of COVID are still present alongside the crisis of living costs in our most vulnerable families.

We acquired new supports and funders and are working hard to maintain and grow these relationships.

Fleet Phoenix is normally funded through numerous methods including fundraising, grants, donations, and commissioning. We are eternally grateful to our funders, supporters, business partners and local community for their continued recognition and support.

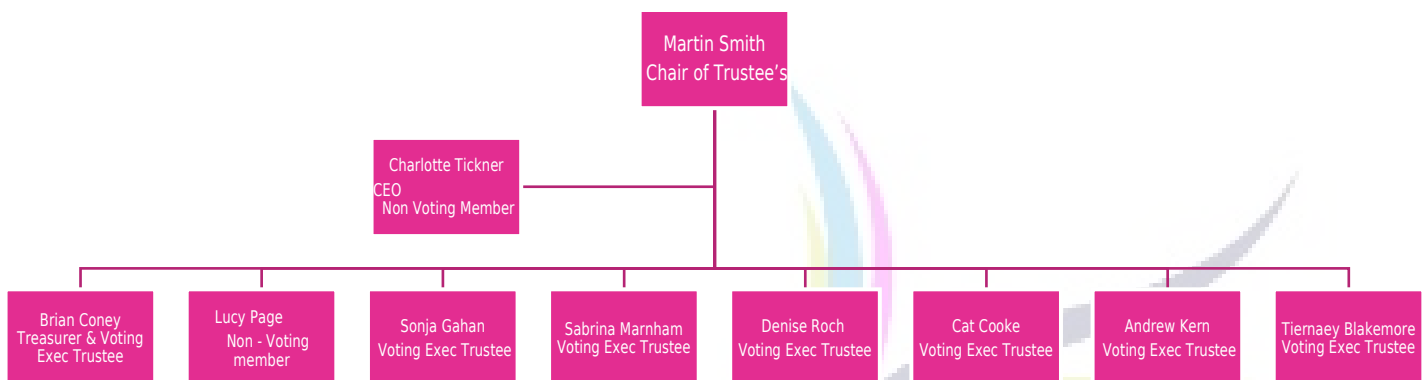
| | | |
|--------------------------------|-----------------------|---------------------------------|
| Hampshire County Council | Hart District Council | Hart Lions Club |
| Durham House | Rotary Club of Fleet | M&S |
| Fleet Town Council | Court Moor School | Hart Food Bank |
| Fleet Rotary Club | Waitrose | Lions Community Store |
| Sainsburys | Fleet Lions Club | Court Moor School |
| Ray West Safety Solutions | Dart Capital | Crookham Village Parish Council |
| National Lottery | Co-op | Elvetham Heath Parish Council |
| Church Crookham Parish Council | Neighbourly | Garfield Westin |
| Allen Lane | Connect 4 Communities | BBC Children In Need |
| Albert Hunt | Costco | Safer North Hants |
| Kane HR | | |

Local community contribution, Fridge, cooker microwave

Amazon Wish List, Donations etc

Organisation Structure

Fleet Phoenix Board of Trustee Structure 2022-2023



Governance

Fleet Phoenix is governed by a Board of Trustees made up of local Community members and because Fleet Phoenix is a youth charity, we ensure that young people are represented.

Members are reappointed annually at the AGM.

The most important role of the trustees is to ensure that the organisation is acting, always, in pursuit of its mission and is legally compliant. The Committee does this by taking a strategic overview of Fleet Phoenix's activities.

Three subcommittees also meet regularly to examine areas of Fleet Phoenix's work more closely; they are:

- Finance and Charity Strategy Sub-Committee
 - Fundraising and Marketing
 - H&S/Governance/Personnel

Advocacy

Fleet Phoenix takes its role within the community seriously and recognises its ability to advocate on behalf of young people and their needs. We do this through a variety of means including:

- Positive press and representation of young people in their community.
- Representation of young people's needs and views at local partnership meetings & forums.
- Positive engagement opportunities with young people within their community.
 - Celebrating young people's achievements with their community.
 - Ensuring the child's voice is heard and actioned.

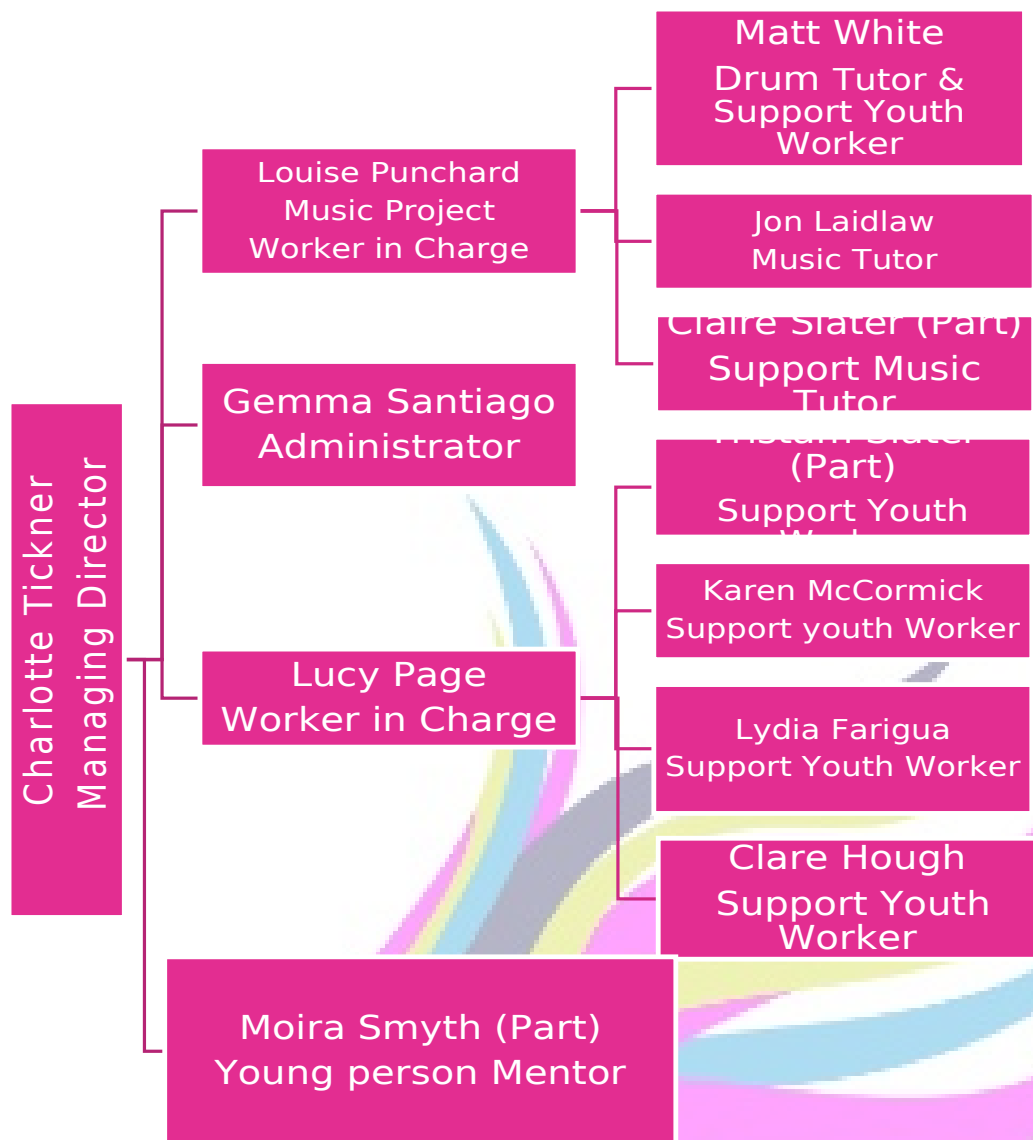
Risk Assessment

Effective risk assessment is increasingly important to the success of any business. Our risk assessment begins and ends with specific business objectives that are anchored in key value drivers of the organisation.

Maintaining our budget and business viability is of the utmost importance and is a main driver of the Board of Trustees.



Fleet Phoenix Operational Structure 2022-23



Benefit to Community

Advice, Information, Guidance & Mentoring– Fleet Phoenix continues to be very busy with Advice, Information, Guidance and Mentoring daytime sessions.

The issues we are presented with are changing constantly and there has been a dramatic increase in enquires for mental health, counselling support and family support. We continue to work with other local providers to support this increasing need for these issues, but it is becoming increasingly difficult with the cut in financial support available. This problem is only going to increase, and Fleet Phoenix is working hard to ensure continued support to our local vulnerable young people and families.

Fleet Phoenix's daytime services offer a range of delivered sessions to support young people's development in times of stress and crisis service, but we have had to change the drop into an appointment service due to the high needs and number of referrals.

Fleet Phoenix continues to work closely with supporting agencies to ensure smooth and effective referral, both ways, including Hampshire Constabulary, Housing providers, Family members, self-referral, Local GP surgeries, Schools, Colleges, the Benefit Office, Children's Services and 1:1 Counselling.

The daytime service works with an average of 80 young people at any one time with complex issues and risk-taking behaviours.

Fleet Phoenix have this year taken on two councillors on work placement for Level 4. This is proving useful to our clients and has been very well received. We will look at continuing these services next year.

Referrals for this support continues to rise since COVID. The overriding issues presented at present are mental health, school refusal, self-harm, and family relations.

We have a constant waiting list which is proving difficult to get on top of. We are looking at solutions for this which maybe some small group support groups for issues like anxiety.



Open Access Youth Sessions – Fleet Phoenix offer a range of open access youth services for young people where they have opportunity to develop new skills,

meet new friends, develop effective and challenging relationships with youth workers, take advantage of volunteering opportunities available through our local partnerships and inform the development of our services. These sessions offer a range of delivery models to ensure we attract and offer services to a range of young people.

Having open access sessions has given young people a safe, warm, and welcoming environment where they can socialise with their friends, learn about topics that are pertinent to their lives and be challenged in a safe and constructive way. These sessions have also contributed to the reduction in youth nuisance and youth anti-social behaviour locally.

As the needs of young people change, the demands on open access sessions are also change and we work hard to be responsive to the young people needs and wants and what we can manage within organisational constraints.

Youth Advocacy - We continue to be a presence at local meetings, groups, information sessions, forums, and events so we can continue to promote young people in a positive and constructive manner, whilst offering feedback to partners on plans, ideas, initiatives they may have which can potentially impact on our service users and young people in general locally.

We find increasingly that we need to promote and ensure that the young person's voice is heard by advocating for them in forums that they find intimidating or unusual, supporting them to have their say in appropriate forums and settings and giving them the skills and opportunity to do so.

Community Support - The last few years have taken its toll on our community at large. Families are struggling to make ends meet and to pay for some of the basics in life, like food, school uniforms and utilities. Fleet Phoenix have responded to these needs but offering the following:

Pre-loved school uniform bank. We supplied 750 items during this period.

Food Bank - We supplied 150 healthy food parcels during this period.

Support with utilities (funds/ grant dependent) – We spent £3000 on supporting families with utilities.

Christmas Toy donations. We supplied 1,200 toys to local children.



**Fleet
Phoenix**
Empowering Young People To Thrive



@fleetphoenix.co.uk



@fleetphoenix11



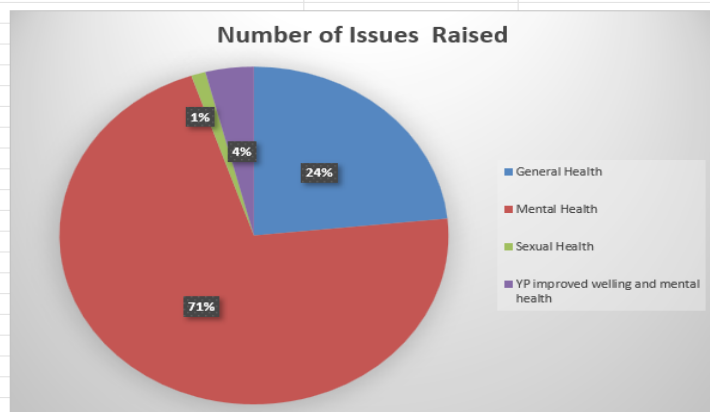
@FleetPhoenix

Registered Charity 1144057

Organisation Stats 2022-23

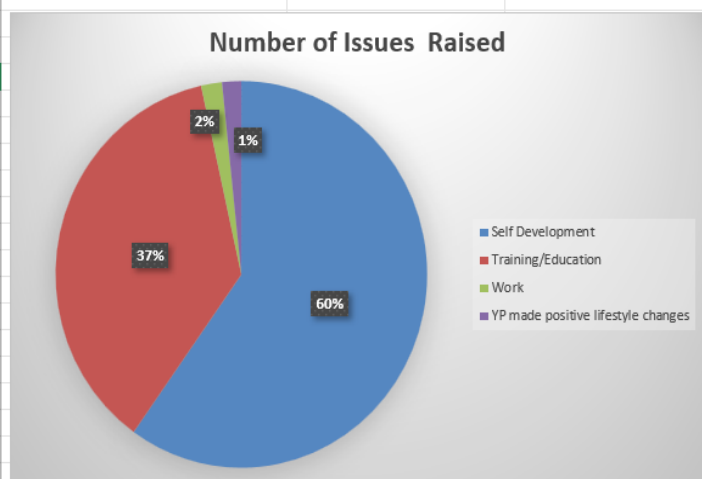
Health:

| Issue | Number of Issues Raised | What is included |
|---|-------------------------|--|
| General Health | 606 | Diet, Exercise, Hygiene, Disability, Food, Illness |
| Mental Health | 1848 | Loneliness, Unhappiness, Suicide, Bereavement, Exclusion, Isolation, Abuse, Alienation, Peer Pressure, Anger, Stress |
| Sexual Health | 31 | Contraception, Pregnancy, Termination, STI's, Relationships |
| YP improved wellbeing and mental health | 104 | This is a young person showing improved and healthy wellbeing and mental health |



Development:

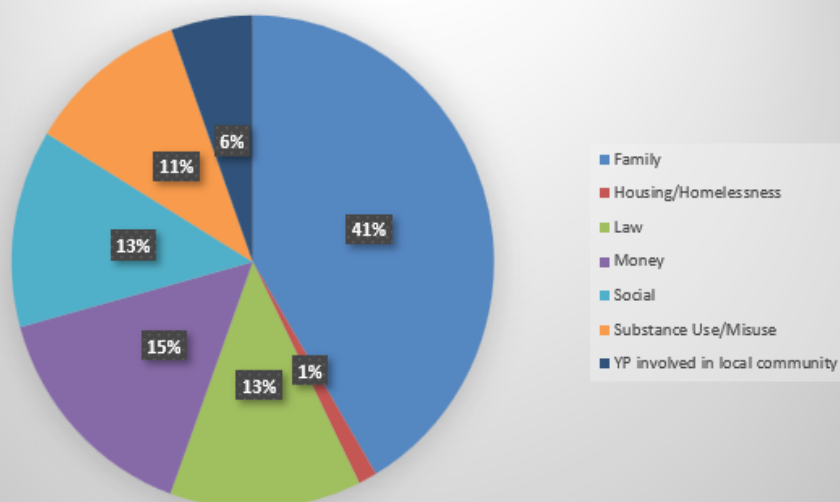
| Issue | Number of Issues Raised | What is included |
|------------------------------------|-------------------------|---|
| Self Development | 1757 | Self-Esteem, Self-Awareness, Self-Confidence, Peer Support, Peer Training, Rights and Responsibilities, Driving, Identity |
| Training/Education | 1077 | School Issues, Problem Solving, Team Work, Initiative |
| Work | 53 | CV Writing, Job Searching, Interview Techniques, Employment Issues |
| YP made positive lifestyle changes | 49 | This is a young person showing positive lifestyle changes and development |



Social:

| Issue | Number of Issues Raised | What is included |
|--------------------------------|-------------------------|--|
| Family | 265 | Domestic Violence, Family Issues, Parenting, Family Relationships |
| Housing/Homelessness | 8 | Household Issues, Council/Social Housing Issues, Bills |
| Law | 82 | Crime, Policing, Court, ASB, FGM |
| Money | 97 | Debt, Budgeting, Poverty, Benefits, Financial Planning |
| Social | 83 | Hate, Racism, Sexism, Homophobia, Radicalisation, Terrorism, Asylum, Refugee |
| Substance Use/Misuse | 69 | Developing Knowledge and Understanding, Drugs, Alcohol, Smoking |
| YP involved in local community | 35 | This is a young person actively getting involved in their local community |

Number of Issues Raised



Organisation Plans for 2023-24

Continued Staff Development – The development of our staff team's skills, knowledge and experiences is invaluable to us. Fleet Phoenix will continue to pay attention to this area.

Funding – As with many charities funding is becoming more and more of a concern. The grants available are becoming more specific, amounts available are less and those granting are fewer. Fleet Phoenix will be focusing on investigating and implementing new fundraising initiatives.



Projects 2023-24

We constantly assess the needs and wants of young people in partnership with our users and partners to ensure we continue to offer services which are both relevant and useful to them.

Do you feel confused, upset, angry, concerned about your sexual or mental health? Or do you need help to fill in a form, want to learn some new life skills, don't understand a letter you have been sent, need to write a CV, fill in a job application form or just need a cup of tea and a chat...anyone is welcome with any issue. Just pop your head around the door.

Open Door

Free Confidential Service

Are you aged between 16 and 25 and struggling with something in your life? Fleet Phoenix Open Door can help.

Contraception Advice
Pregnancy Testing
Confidence
Fertility
Sexual Health Support
LGBTQ+
Access to Education and Training
Healthy Eating
Caring Advice
Housing
Drug and Alcohol Support
Building
Self-Harm
Stimulus

The Fleet Phoenix team of experienced professional workers are here to help. Come along on our drop-in advice and advice service on a Tuesday and Friday 1.30pm - 4.30pm

The Fleet Health Centre, Northfleet Road, Fleet GU14 6EP
Contact Christine Williams for more information on our free drop-in support. chris@fleetphoenix.org.uk

Fleet Phoenix
Borough Road, Fleet, Hampshire GU14 6EP
01329 842222
www.fleetphoenix.org.uk

OPEN DOOR MENTORING

Please feel free to contact us for more information and/or a referral form.
Charlotte.tickner@fleetphoenix.co.uk

Tuesdays and Fridays from 1:30 - 4:30 pm and Wednesday 4pm - 6:30pm



Fleet Phoenix offers FREE pregnancy testing, condom distribution, advice and information on sexual health and relationships, to any young person under 25.

Just pop into ANY of our open sessions and ask for a chat.

SMART MUSIC

Smart Music is a music session supporting young musicians aged 11-25 years old. It offers FREE guitar and drum tuition giving young people an amazing opportunity to learn, develop and be creative.

Come along and meet the team, learn new skills, and have a go on some of the amazing equipment

Pop in and have a chat with Louise to find out

Tuesdays from 4.30 - 6.30pm Term Time

TNS

TNS is a youth club for school year 8 up to and including year 11.

TNS is a FREE youth club where you can come and hang out and chill or learn new skills. Find out more about the subjects that affect your life like drugs and alcohol, health and relationships, in a fun and supportive place.

No pressure; just respect and fun. Alongside having fun, learning some new skills our team can offer you support and advice or just a listening ear.

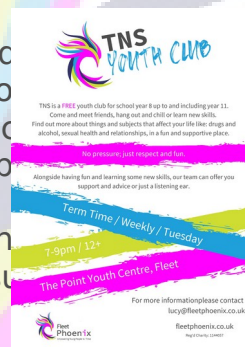
Pop in and have a chat with Lucy to find out more.



JAMMIN

Jammin is a FREE band rehearsal space for young, up and coming bands.

All young people need to come along is enthusiasm; we can provide all the instruments and equipment you need to get you going. Our staff team can support you develop your musicianship skills, singing skills, song writing skills and band if that is what you need or just offer you a place to practice where you won't be told to turn it down. Pop in and have a chat with Louise to find out more.



meet new people we have.

more.

Only

Tuesdays from 7 - 9pm Term Time Only

Wednesdays from 7pm - 10pm Weekly

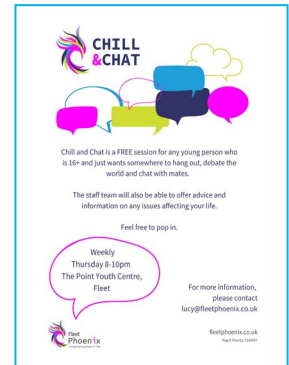
CHILL & CHAT

If you are year 11+ and just want somewhere to hang out, debate the world and chat with mates, feel free to pop in.

The staff team will also be able to offer advice and information on any issues affecting your life.

If you would like more information, please contact Lucy.

Thursdays 8 - 10pm Weekly.



TLC

TLC is a FREE junior youth club for up to and including school year 7.

Come and have fun, be creative, laugh, play, and make new friends.

We offer a fun, creative, and challenging programme of activities every week.

You can come along, have some fun, learn something new and be stretched and challenged.

Please contact Lucy for more information.

Thursdays 6 - 7:30pm Fortnightly.



SUMMER PROJECTS

Fleet Phoenix runs several events throughout the summer to keep young people engaged and busy!

SUMMER SCAM

Sponsored by Fleet Lions, Fleet Phoenix offers an extended summer project to young people every Thursday evening at The Views. The programme this year runs every

Thursday from July to August. This project offers young people who are 13+ the opportunity to engage and build healthy and respectful relationships with supporting partners. We offer a FREE BBQ, FREE inflatables, team games and youth issue related workshops and experiences.

The Views, Fleet - Thursdays from 6:30 - 8:30pm, July to September.

Sponsored by Crookham Village Parish Council, Fleet Phoenix offers an extended summer project to young people every Friday evening at Zebon Community Centre, Playing Fields. The programme this year runs every Thursday from July to August. This project offers young people who are 13+ the opportunity to engage and build healthy and respectful relationships with youth workers. We offer a FREE BBQ, FREE inflatables, team games and youth issue related workshops and experiences.

THE LEA

Fleet Phoenix offer a junior outreach project during the summer months, in an area where historically the young people display anti-social behaviour from a very young age. Numerous complaints and issues are centred on young people in the area and young people site boredom as their issue.

The project was developed to diversionary activities, issue-based information, and workshops and for all partners to develop productive and effective relationships with the young people, residents, and parents.

Larmer Close Playing Field - Mondays 6.30 - 8pm, July - September.



LEGO Club:

Lego Club is held throughout the school holidays, Keep an eye on our Facebook page for dates and times.

RADA (Resilience against Domestic Abuse)

is a free session for children of junior school age, who have been witness to domestic abuse in the home.

This project works on an early intervention model with an appreciation of the child's life situations.

The project will offer children a safe, warm welcoming place, which offers them space, time, and freedom to:

- Have time out.



- Play and learn.
- Feel supported and understood.
- Have the opportunity to express themselves in a safe environment.
- Understand their environment and what they are witnessing.
- Develop strong & effective relationships with the Youth Work team who will be able to offer ongoing support.

This project actively seeks referrals from any supporting agencies and family members.

For more information, please contact Charlotte.



Contacts:

The Point Youth Centre

Harlington Way

Fleet

Hampshire

GU51 4BP

01252 812308

info@fleetphoenix.co.uk



www.fleetphoenix.co.uk



@fleetphoenix.co.uk



@fleetphoenix11



@FleetPhoenix

Unk
now

Registered Charity 1144057

or is
licen
sed
unde
r

@fleetphoenix.co.uk



@fleetphoenix

by
Unkno
wn
Autho
r is
licens
ed
under

@fleetphoenix

charlotte.tickner@fleetphoenix.co.uk

Managing Director and Advice and Information Worker in Charge

lucy@fleetphoenix.co.uk

Youth Worker in Charge

gemma.santiago@fleetphoenix.co.uk

Administration





CHARITY COMMISSION
FOR ENGLAND AND WALES

Fleet Phoenix

No (if any)

Receipts and payments accounts

CC16a

For the period
from

Period start date
1-Apr-22

To

Period end date
31-Mar-23

Section A Receipts and payments

| | Unrestricted funds | Restricted funds | Endowment funds | Total funds | Last year |
|---|--------------------|------------------|------------------|------------------|------------------|
| | to the nearest £ | to the nearest £ | to the nearest £ | to the nearest £ | to the nearest £ |
| A1 Receipts | | | | | |
| Grants | 26,647 | 26,120 | | 65,767 | 52,767 |
| Fund Raising | 1,994 | | | 5,303 | 1,994 |
| Donations | 25,018 | | | 30,382 | 25,018 |
| Sashas fund | 411 | | | 176 | 411 |
| Other | 270 | | | | 270 |
| Savings interest | 5 | | | 57 | 5 |
| Courtmoor | 4,583 | | | 5,417 | 4,583 |
| zebon Outreach | 2,977 | | | | 2,977 |
| HYPE | | | | 2,824 | |
| HMRC | 328 | | | | 328 |
| COVID | | | | - | |
| Sub total (Gross income for AR) | 62,233 | 26,120 | | 109,926 | 88,353 |
| A2 Asset and investment sales, (see table). | | | | | |
| | - | - | - | - | |
| | - | - | - | - | - |
| Sub total | - | - | - | - | - |
| Total receipts | 62,233 | 26,120 | - | 109,926 | 88,353 |
| A3 Payments | | | | | |
| Salaries | 56,365 | 17,974 | | 87,326 | 74,339 |
| Fund Raising | 540 | | | 1,229 | 540 |
| Marketing & promotions | 3,020 | | | 495 | 3,020 |
| Daytime Projects | 234 | | | 68 | 234 |
| Evening Projects | 1,755 | | | 2,223 | 1,755 |
| Summer Projects | | 3,419 | | 3,668 | 3,419 |
| H&S | 1,018 | | | 889 | 1,018 |
| Cash Float | 170 | | | 50 | 170 |
| Maintance & Repairs | 67 | | | 100 | 67 |
| Licences | 1,871 | | | 1,906 | 1,871 |
| Insurance | 2,569 | | | 2,581 | 2,569 |
| Phone/Broadband | 985 | | | 1,028 | 985 |
| Office | 1,650 | | | 1,024 | 1,650 |
| Rent | 1,200 | | | 1,426 | 1,200 |
| Staff Training | | 567 | | 324 | 567 |
| Sundry expences | 402 | | | 1,263 | 402 |
| Sasha Fund | 348 | | | 144 | 348 |
| Minibus | 1,302 | | | 1,506 | 1,302 |
| COVID | | 382 | | | 382 |
| Wenceslas | | 1,257 | | 320 | 1,257 |
| Xmas Toys | 348 | | | 164 | 348 |
| HYPE | | | | 4,568 | |
| Sub total | 73,844 | 23,599 | - | 112,302 | 97,443 |
| A4 Asset and investment purchases, (see table) | | | | | |
| | - | - | - | - | |
| | - | - | - | - | - |
| Sub total | - | - | - | - | - |
| Total payments | 73,844 | 23,599 | | 112,302 | 97,443 |
| Net of receipts/(payments) | | | | - 2,376 | - 9,090 |
| A5 Transfers between funds | | | | - | - |
| A6 Cash funds last year end | | | | 46,565 | |

| | | | | | |
|--------------------------|---|--|---|--------|--|
| Cash funds this year end | - | | - | 44,189 | |
|--------------------------|---|--|---|--------|--|

Section B Statement of assets and liabilities at the end of the period

| Categories | Details | Unrestricted funds to nearest £ | Restricted funds to nearest £ | Endowment funds to nearest £ |
|---|--|------------------------------------|----------------------------------|---------------------------------|
| B1 Cash funds | Unpresented cheques | | | |
| | Current Account | 14,191 | | |
| | savings account | 29,998 | | |
| | Total cash funds | 44,189 | | |
| | (agree balances with receipts and payments account(s)) | Agreement Error | OK | OK |
| | | Unrestricted funds to nearest £ | Restricted funds to nearest £ | Endowment funds to nearest £ |
| B2 Other monetary assets | Details | | | |
| | | - | - | - |
| B3 Investment assets | Details | | | |
| | | | - | - |
| B4 Assets retained for the charity's own use | Details | | | |
| | | | - | - |
| B5 Liabilities | Details | | | |
| | | | - | - |
| Signed by one or two trustees on behalf of all the trustees | Signature | Print Name | Date of approval | |
| | | Brian Coney | | |



CHARITY COMMISSION
FOR ENGLAND AND WALES

Independent examiner's report on the accounts

Section A

Independent Examiner's Report

Report to the trustees

Charity Name
Fleet Phoenix

On accounts for the year ended

31 March 2023

Charity no
(if any)

1144057

Set out on pages

2

Remember to include the page number in the title page of the report.

I report to the trustees on my examination of the accounts of the above charity ("the Trust") for the year ended 31st March 2023

Responsibilities and basis of report

As the charity's trustees, you are responsible for the preparation of the accounts in accordance with the requirements of the Charities Act 2011 ("the Act").

I report in respect of my examination of the Trust's accounts carried out under section 145 of the 2011 Act and in carrying out my examination, I have followed all the applicable Directions given by the Charity Commission under section 145(5)(b) of the Act.

Independent examiner's statement

~~The charity's gross income exceeded £250,000 and I am qualified to undertake the examination by being a qualified member of [insert name of applicable listed body]]. Delete [] if not applicable.~~

I have completed my examination. I confirm that no material matters have come to my attention in connection with the examination (~~other than that disclosed below~~ *) which gives me cause to believe that in, any material respect:

- the accounting records were not kept in accordance with section 130 of the Charities Act; or
- the accounts did not accord with the accounting records; or
- the accounts did not comply with the applicable requirements concerning the form and content of accounts set out in the Charities (Accounts and Reports) Regulations 2008 other than any requirement that the accounts give a 'true and fair' view which is not a matter considered as part of an independent examination.

I have no concerns and have come across no other matters in connection with the examination to which attention should be drawn in this report in order to enable a proper understanding of the accounts to be reached.

** Please delete the words in the brackets if they do not apply.*

Signed:

Date:

14th August 2023

Name:

John Christopher Geering

Relevant professional qualification(s) or body

Fellow of the Institute of Financial Accountants

(if any):

| |
|--|
| |
|--|

Address:

11 Glen Road

Fleet

Hampshire GU51 3QS

Section B

Disclosure

Only complete if the examiner needs to highlight material matters of concern (see CC32, Independent examination of charity accounts: directions and guidance for examiners).

Give here brief details of any items that the examiner wishes to disclose.

No matters of concern