



# ANNUAL REPORT AND ACCOUNTS OF THE PAROCHIAL CHURCH COUNCIL

For the year ended 31 December 2021



Team Rector  
The Reverend Helen Hancock  
20A Kingsdowne Road Surbiton KT6 6JZ

Registered Charity Number in England: 1143978  
Registered Name: The Parochial Church Council of the  
Ecclesiastical Parish of St Matthew's, Surbiton  
in the benefice of the Tolworth Hook & Surbiton Team Ministry

# **The Parochial Church Council of the Ecclesiastical Parish of St Matthew's, Surbiton**

The PCC is a charity registered with the Charity Commission in England and Wales. St Matthew's forms part of the Tolworth Hook & Surbiton Team Ministry working alongside our brothers and sisters in Christ at St George's, Tolworth and St Paul's, Hook.

## **PCC MEMBERSHIP**

Members of the PCC are either ex-officio or elected at the Annual Parochial Church Meeting in accordance with the Church Representation Rules.

PCC membership is for a three year term of office. It is permitted to hold the office for two consecutive periods after which it is our practice for the member to stand down in order to spread the responsibility of this position more widely amongst the congregation. The term each member is serving is indicated below.

During the year the following served as members of the PCC:

Team Rector: Rev'd Helen Hancock

Churchwardens: Mrs Jackie Farris  
Mr Mike Taylor

Representatives on the Deanery Synod:  
Mr Mark Curzon  
Mrs Sheena Evans  
Mrs Sue Fraser

Elected representatives of the laity:

Until APCM 2022 Mr Dave Farris (second term)  
Mr Keith Hudson (first term)  
Mrs Jessica Johnson (first term)  
Ms Ashleigh Wakefield (first term)

Until APCM 2023 Ms Anne Cosserat (second term)  
Mr Stuart Bachelor (second term)  
Mrs Isobel Hill (first term)  
Miss Wendy Richmond (first term)  
Mr Tim Lucas (first term)

Until APCM 2024 Mrs Chika Ripley (second term)  
Mrs Brenda Tyrrell (second term)

We are very grateful to all those who have served as PCC members this year.

## CHURCH MEMBERSHIP

The Electoral Roll was revised in preparation for the APCM in April 2021. Following this revision the Electoral Roll stands at 159 people, a slight increase on the previous year (157 people).

Of the 159 people, 58 live within the parish boundary, and 101 reside in other parishes, in the Team parishes, elsewhere in Surbiton and beyond.

*Judith Jones*

## OCCASIONAL SERVICES

The number of baptisms, marriages and funerals were as follows:

Baptisms	4
Weddings	4
Funerals (conducted both in our church buildings but also by a member of our ministry team elsewhere)	29

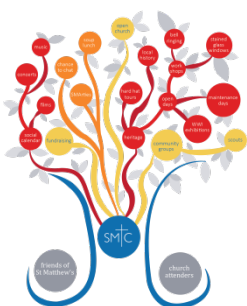
All of these represent opportunities to witness to our local community and share the love of God with people at special times in their lives and are a key part of our mission to the local community. Of course some, like the wedding of Keith and Lauren (now) Hudson, are much more home grown affairs and provide a delightful opportunity for the whole church family to celebrate!

St Matthew's takes a significant proportion of the church funerals within the Deanery and we are particularly grateful to The Rev'd William Allberry and to Tony Geater who, in addition to The Rev'd Carolyn Lucas and the Team Rector, conduct this important ministry.

## Trusting in the Father, Honouring the Son, Serving in the Spirit

Each church had its own particular challenges and opportunities which were met in different ways but the sense (especially at Clergy level) of support and combining for the good of all was a real encouragement. Operating online gave THiS Team a new impetus as clergy provided much appreciated daily acts of worship and other services all available from our very own YouTube Channel. We took advantage of Zoom too in our 'Thy Kingdom Come' nightly calls reflecting on the persecuted church. In person we said farewell to Rev David Nyirongo and to Safiya, Kamran, Judah and Seraphine as David's three year contract at St George's came to an end. David's infectious smile and energy was greatly appreciated both at St George's but also across the Team. His commitment and love for people and the Lord and his enthusiasm prepared the ground wonderfully as St George's then welcomed Rev Nicholas Lebey along with Evelyn, Joshua, Gabriel and Elizabeth to the Team. As a training curate Nicholas' time is partly taken up with varied training requirements and his studies but we are all benefitting from his godliness, warmth and depth of Christian experience.

I would like to end this short piece by thanking you for reading to the end (!) but mostly for your contribution to the life and ministry of St Paul's, St George's and St Matthew's and together THiS Team. Many people have given sacrificially of their time, their talents and financially to support our churches and to further the work of God's Kingdom in Tolworth, Hook and Surbiton. This is often done quietly and generously and I thank you.



An understandably quiet year for our Friend's group (apart from the Heritage Weekend in September), it continues to be a conduit for information locally.

## Covid19

Last year we reported on the stop/start pattern of worshipping in church in 2020 which was dictated by a combination of government restrictions and our assessment of risk in the prevailing circumstances – always keeping the safety of our congregations and our community at the forefront of our minds.

And so it continued in 2021 as the need to be adaptable was always to the fore. At the beginning of the year we reverted to the pattern from November 2020 which included a short service aimed at young children and families called '20MinutestoPraiseGod' with a second service at 10.30. These were all live streamed from church on Facebook and eventually on our very own YouTube Channel.

The return to onsite worship on Palm Sunday – 28 March 2021 was a welcome re-unification which also saw the return of various problems to solve! The one way system for Holy Communion and leaving the building, social distancing with our lovely colourful crocheted bands, children's groups operating once again albeit with necessary changes, still receiving Holy Communion 'in one kind' (just the bread) onsite or spiritually online and nearly everyone (onsite) wearing masks were some of the highlights.

## Bereavement Friendly Church

Building upon the number of funerals we undertake at St Matthew's, the wonderful work which Susan Kang undertakes in supporting those who are bereaved and the devastating death toll of the pandemic it seemed a natural step forward in mission to consider becoming a 'Bereavement Friendly Church'. The PCC agreed that this should become an on-going focus for the whole congregation and a small team was set up to support the work. As you read the 'Twelve Marks of a Bereavement Friendly Church' below please do prayerfully consider if and how you might help take this work forward with your friends, family, neighbours and other networks of which you are a part:

1. Training provided for the church community
2. Understanding encouraged
3. Bereavement support team
4. Bereavement support lead person
5. Faith questioning expected
6. Suffering affirmed
7. Helpful theological messages
8. Realistic approach to death/good deaths prepared for
9. Signposting bereaved
10. Activities for the bereaved
11. All church life reviewed for welcome
12. Provision for respite, comfort and peace.

Foremost within our focus has been the six week 'Bereavement Journey' course which Susan ran in September and will repeat in 2022. Offering support to those of faith and no faith who have been bereaved, however long ago, it has been a huge support to those who attended. Here is some of the feedback received:

*'I have learnt that there is light at the end of this very dark tunnel and that with the help and support of others there is hope for the future'*

*'It was easier to talk about my feelings with people who were going through the same'*

*'Confronting and expressing regret, guilt and anger was difficult but helped me to move forward'*

## **Balance Café**

A second mission activity almost seemed to offer itself during the year. Our good relations with the residents and staff of Woodbury Care Home had already established a partnership with Balance CIO, the charity which runs the Home in Kingsdowne Road for those with severe learning difficulties. But when it was realised that the café which Balance also ran in the King Charles Centre must have closed with the redevelopment of the site discussions began about opening up a Community Café at St Matthew's. This chimed in with previous thinking about a Café which had had to be shelved once the Tower and Spire Project had become a priority.

So from small beginnings – being opened just on Wednesdays - this joint venture is gradually establishing itself as a local fixture with neighbours and church members, care home residents and passers-by all dropping in for refreshments and company. The food is delicious and there's a friendly welcoming atmosphere whilst the Café also provides a supportive placement for people to develop skills in catering and customer service. If you haven't already tried it, do come along one Wednesday!



## View from the Vicarage

It is always a worthwhile afternoon spent looking back over what happened in the previous year and giving thanks to God and to all those individuals who helped to make it happen. This time the task becomes even more strange. In looking back it is necessary to take oneself back to what was happening; the mixture of remote and unreal with the painfully close and vivid reminds us of the many restrictions and deprivations under which we were operating. But then when we look at what we achieved it is to marvel and, once again, give thanks to God! We also look back with sadness and gratitude for those we have loved and lost during the year.

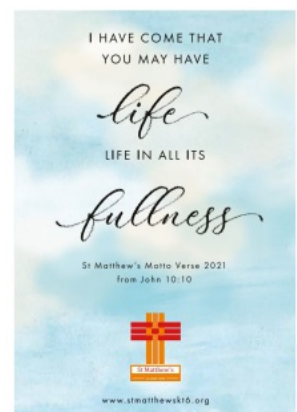
Margaret Howell (Judith Mackie's mother) was a long standing member of St Matthew's who died this year having moved out of the Parish to a Care Home in Esher a few years ago. Margaret was a faithful servant of Christ with a great heart for the homeless and those who might otherwise be forgotten or overlooked. She loved seeing families in church and would take a great interest in them, wanting to welcome them and have them feel at home with us.

Another sad loss this year was Paul Atkins. We can do no better than quote the tribute which Ian Davies wrote in his cornerHOUSE report to the PCC in July "We open this report with a short acknowledgment of the crucial role that Paul Atkins played in our work as PCC-appointed trustees. Paul's association with the cornerHOUSE, and the Douglas Centre before it, was long and productive. He was involved in community activities before the Centre was even a twinkle and brought his experiences, and his renowned practical skills, to its development over many years. He was a consistent bridge between the church and the centre; his light-touch witness was an example to us all. Paul (or as he was frequently referred to by Centre stalwarts, "Lanky") was as at home taking unlikely roles in the annual panto, as he was at fixing errant pieces of electrical equipment or providing balanced and respected views at the meetings of the Trust. He will be greatly missed." So much of that tribute is absolutely relevant to the contribution which Paul made to St Matthew's as well. Initially supporting his wife Laxmi as Churchwarden and then warden in his own right, Paul's practical and generous nature found him taking on all sorts of maintenance tasks around the church building, leading a young people's group, preparing delicious mango kulfi for wonderful Indian evenings in support of church funds and also taking a lead in the spiritual welfare of the church. Having braved a long illness, Paul finally died in July and as we gave thanks for him we mourned too, alongside his children Mark and Melissa and their families.

Both Paul and Margaret would have taken great delight in all that St Matthew's has achieved so it is in their memory that we record some headlines (which mostly have not been included elsewhere in the Report . . .)

### January

We said farewell to Janice Price who was on placement with us and has since been ordained as curate at St Andrew and St Mark's next door  
Introduced our new Motto Verse  
Sermon series on the 'Five marks of mission – Tell, Teach, Ten, Treasure and Transform'



## **February**

THiS Team weekend with a Zoom Quiz Night with the great Team names Lockdown Luvvies, Parish Councillors, Motley Crew, Hel's Angels, Violet & Betsy, THiSisit and Mixed Bunch

Plus a live streamed joint service on Sunday 7 Feb

The Start Course ran for 6 weeks on Zoom with 12 attendees sharing their stories and discussing faith  
Launch of our Eco Church group

## **March**

The introduction of AV equipment was approved by the PCC but the money was still needed . . .

PCC benefitted from attending some training together entitled 'PCC tonight' provided by CPAS.

Back into church for worship on Palm Sunday - Hosanna!

## **April**

The congregations were invited to complete a Comms Survey to guide our future Comms strategy - more from this hopefully this year!

## **May**

Sermon series introducing the congregations to being a 'Bereavement Friendly Church'

A Gift Day raised over £20k with 10% to local charities (especially those who have played a key role during the pandemic), 10% for Christian Aid Week and 80% to church repairs and projects - the AV equipment, bike racks and resurfacing the outside and new flooring in due course

Trial of alternative service times started with consultation

Helen's Christian Aid Week sponsored walk to Kingston and back each day with increasingly full water buckets and a different companion each day

Balance Café starts

## **June**

Rev Nicholas Lebey ordained and arrives at St George's

Classes held into July to prepare nine children across the Team to receive Holy Communion

## **July**

Successful and busy Maintenance morning held

PCC advising on COVID restrictions and pattern of service times moving forward

## **August**

Mini maintenance morning to finish off all those odd jobs

The ever-popular 'Why I am a Christian' series continues

## **September**

New service times introduced – more formal service at 9am and morning worship with children's groups at 10.45

A very successful Heritage Open Day on the theme of 'Edible England' over 100 visitors attending with bell ringing and tours up the Tower, guess the mystery ingredient in the cake, vegetable printing, still life drawing and more, all masterminded by our Heritage Activities Coordinator Alex Hill

Awarded Silver Eco church award by A Rocha

St Matthew's Weekend film showings at the cornerHOUSE

The six week Bereavement Journey Course started



A topical sermon series on Ruth which focused our attention on the plight of refugees and '*hesed*' (God's steadfast loving kindness)

St Matthew's School back in church for their Harvest Service

### **October**

another-not-too-far-AwayDay held at Shrewsbury House School

### **November**

Our Service of Remembering and Thanking took on a higher priority for obvious reasons as the Parish were invited to come along to an open afternoon to light a candle for those they had loved and lost as well as to attend the service itself.

Stone repairs were started on the church so scaffolding once again engulfed parts of the building and unfortunately during the course of the work more stone work was found to be in need of replacement so the job got longer and more expensive.

Awarded the 2021 'Naylor Award for Excellence in Church Maintenance' by National Churches Trust receiving an award sponsored by The Pilgrim Trust of £7,500

Live streamed Remembrance Service for the Royal Star & Garter due to the Home being in lockdown

First Holy Communion celebrated at a Care Home since March 2020 at Milverton

### **December**

3,000 Christmas leaflets delivered to homes in the parish

Southborough Boys School hold their Christmas Service in church

Our second not-so-merry-Xmas service held just online for those who struggle to celebrate

Our Christingle Service held without any lit candles but a DIY kit to make at home

A mixture of live streamed and in person Christmas services at local Care Homes

Phew – what a year!

# Reports

## Treasurer's Report for the year ended 31 December 2021

In 2021, there was a deficit of £44,022 on unrestricted funds and a surplus of 39,131 on restricted funds. After transfers, unrestricted funds decreased by £19,927 and restricted funds increased by £15,035. As a consequence, as at 31<sup>st</sup> December 2021, unrestricted funds totalled £843,708, of which £650,000 was represented by the property in Ellerton Road, and restricted funds £23,723.

### 1. Income

Total unrestricted income was £155,357 in 2021 and restricted income £53,679, giving a total of £209,036 (2020 £188,278). The increase from 2020 to 2021 was primarily the result of the Gift Day which raised £20,705 (there being no equivalent in 2020). In addition, income was also boosted by the receipt of the final grant from the National Lottery Heritage Fund for the Tower and Spire project (£18,750) while the level of regular giving fell marginally.

### 2. Expenditure

Total expenditure on the unrestricted funds was £199,379 in 2021 and on restricted funds £14,549, a total of £213,928 (2020 £259,539). The largest elements of expenditure were the diocesan parish share £80,300 (2020 £81,200), major works and repairs £54,121 (2020 £91,419), mission and charitable giving £17,585 (2020 £13,708), professional fees £16,062 (2020 £15,595) and insurance £12,904 (2020 £12,967). The decrease in the major works and repairs expenditure primarily reflects the winding down of the Tower & Spire project, although spending in 2021 was still at an elevated level as further works on the roof and exterior of the building were undertaken. The professional fees paid were primarily to the architects responsible both for advising on required works and overseeing them. The increase in mission and charitable giving came about because a portion of the Gift Day monies were used for this purpose.

### 3. Transfers between Funds

The general fund benefitted from transfers amounting to £24,095. This mainly resulted from the reversal of excessive transfers from the fund in past years.

### 4. Balance Sheet

The primary assets as at the end of 2021 were the property in Ellerton Road (£650,000) and £213,134 (2020 £236,463) in cash and short term deposits.

### 5. Free Reserves

Free reserves (ie the reserves of the unrestricted funds net of fixed assets) amounted to £187,366 at 31<sup>st</sup> December 2021 (2020 £213,635). This continues to be in excess of the minimum required by the reserves policy.

## Churchwardens' Fabric Report

Firstly our thanks go again to everyone who helps to improve and maintain the fabric of our Church, many of whom do so very quietly.

2021 saw another busy year of work carried out despite the ongoing restrictions due to Covid 19. Many small but vital jobs were completed, unused bookshelves removed, a new AV desk built and pipes were boxed in all giving a tidier appearance to our building.

A group of girls from Surbiton High School came along and cleaned the crèche and sorted the toys for age appropriateness

We held two maintenance days when the building was given a thorough clean, high cobwebs cleared, cupboard doors repaired, hymn books sorted and old unused books were donated to Christian charities to be sent abroad. Garden works included removing all greenery from near the church building walls, weeding, rubbish removal, the old notice board was removed, shrubs were trimmed, drains and gutters were checked to ensure they were operational. Two water butts were installed to harvest rainwater. Our sensory garden was started but is on hold at the moment due to the roof works which started in November and are currently still being carried out.

In the autumn a dishwasher was fitted and some tiling behind the cooker upgraded the hygiene in the kitchen.

We will be planning another Maintenance Day this year to carry on the upkeep of the church building.

*Mike and Jackie*

## Safeguarding

Caroline Aird-Mash stepped down as a PSO during the year and we are grateful to Sue Fraser who has replaced her. Safeguarding at St Matthew's has made good progress over the past year. All DBS checks and safeguarding training have now been completed. Our policies relating to safer recruiting and letting our premises have been reviewed and we are seeking guidance from the diocese on other policies. Safeguarding remains a standing item at all PCC meetings and information about safeguarding is on the home page of our website. All church activities are risk assessed. Information relating to safeguarding is stored securely.

*Brenda Tyrrell and Sue Fraser*

## Eco Church

This has been an eventful year for the eco-Church team, during which we launched our St Matthew's Church commitment to achieving net zero carbon emissions by 2030, in line with the objective set by General Synod and under the Eco Church scheme run by the charity A Rocha.

We took forward action through:

- Teaching and worship, with a Lent launch of Eco Church to our congregations when we invited Environmental Advisor to the Church of England, Ian Christie to speak to the Church. This was followed by a sermon series focusing on environmental issues and our response as Christians. We also held a Creation Sunday on 7 November 2021, encouraged our home groups to explore the small group study: 'Caring for God's World' and offered ongoing prayers for the environmental crisis throughout the year.
- Improving the insulation and economical lighting and heating of our building. We also measured our energy use and carbon footprint at the beginning of 2021 in order to benchmark as we look to reduce our impact year on year.
- Encouraging lifestyle changes through the '40 ways to spring clean your life in Lent' activity, weekly Ecotips in the notice sheet and on the website thereafter, and action to bring church purchasing of refreshments and cleaning products in line with these changes. We also set up a WhatsApp group for Church members to share eco-friendly ideas and products.
- Acting to encourage biodiversity on our land by developing a garden maintenance plan, setting aside an unmowed area and sowing wild flower seeds; we also built a bug hotel and installed water butts. We formed a gardening team to work on the Church grounds, and held our first Wildlife Survey in June 2021 as part of the *Count on Nature* initiative.
- And contributing in cash and kind to relevant local and national charities as part of our community and global engagement. Our PCC supported local and international environmental charities financially in 2021. We took part in litter picks at Fishponds Park and other green spaces. The Eco Church team also ran a stall at St Matthew's School Christmas Fair where we encouraged parents to measure their carbon impact and asked children to write prayers on recycled cardboard stars.

We leapfrogged Bronze to be awarded an A Rocha Eco Church Silver award – a huge well done to all involved – but we will continue to work hard to retain and improve on that.

The Eco Church team is led by Jen Houghton, and comprises Sheena Evans, Chika Ripley, Joan Scriven, Chika Ripley, Mike Taylor, Brenda Tyrrell and Rev Helen Hancock.



**Our Wildlife Survey in June 2021**



**St Matthew's Eco Church team awarded Silver!**

## Music, St Matthew's Choir

The choir and music group were again obliged to sing and play either from home or not at all for the first few months of the year, but the choir were able to put together a 'virtual' rendition of 'This joyful Eastertide' for Easter Sunday. After that we began to sing in church again in reduced numbers, and back at full strength from September. There was a special team Choral Evensong service at the end of September, with very welcome and

enjoyable contributions from the children's choir and from Felix Elliott on organ and piano. Our Carols by Candlelight services on 19th December were at 4pm and 6.30pm to allow more congregation to be present, and the choir, now quite accustomed to singing in masks, sang with skill and commitment. Our grateful thanks go to the choir members, the musicians of the band and to Hazel Crossley on the organ, who have continued to lead the musical worship throughout another challenging year.



*Simon Hancock  
Director of Music*

## Discipleship Team



The St. Matthew's Discipleship team consisted of Revd Helen Hancock, Simon Hancock, David Itcovitz, Jen Houghton, Ian Davies, Philippa Alexander and Dave Farris.

The team's purpose is to enable the better equipping of our congregations to live out their faith in their everyday lives, everyday; and to deepen their relationship with God as Father, Son and Holy Spirit. In a nutshell; being a Christian 7 Whole Days.

This year there has been a Start course held online; a motto verse exploration morning held online, and a motto verse home group study (written by Ian Davies); an Easter Saturday reflection held online hosted by Revd William Allberry; daily Lent studies offered online with inputs from across the THiS team; a Bereavement Church course and a church away day - The Not Very Far Away Day, held at Shrewsbury school, with a welcome return of Peter Greystone to give his talk, a Ground Floor Guide to the New Testament.

## Report on Deanery Synod

The Deanery Synod met three times, always by Zoom, which for some at least made it hard to know how many of the 70+ members were attending. A judicious mixture of talks and discussion made for lively meetings, however, and gave us the opportunity to set our parochial concerns within the diocesan and wider C of E context. Highlights were the nail-biting story of the consultation, then re-run consultation on a C of E secondary school for Kingston – thankfully now approved; a good, open discussion about attitudes to sexuality in the church; and news of how churches across the diocese were striving, through the Eco Church scheme, to help meet the national Church target of net zero carbon emissions by 2030. We hold our heads high on that one!

*Sheena, Sue and Mark*

## Children's Groups

Scramblers and Climbers have operated as a combined group from April 2021 onwards (when in church sessions resumed, post lockdown).

### Scramblers and Climbers

Since our return to face to face Children's Groups, the number of available leaders and helpers has reduced so the Climbers and Scramblers groups meet together. The resulting group is now referred to as Scimblers and has a very wide age range, from 3 to 7 years.

This means that we had to rethink how we read the bible stories together, as planning for such a wide age range can be a challenge. However, it also means that the younger children are exposed to more sophisticated ideas about their faith, and the older children are able to take the lead in activities such as drama. Some weeks the sessions take on a format more similar to Scramblers, which the older children remember and can help show the younger ones how to do things.

Our typical session starts with the register and news time from the children, followed by a bible story and some activity or craft, before we re-join the service during the final hymn.

We have between 5 and 10 children on average. If you would like to join our team of leaders we'd love to have you.

*Judith, Melissa, Stuart, Wendy, Will, Julie, Joan and Rochelle*

### Explorers

Explorers is open to our St Matthew's Church members aged 7-11.  
Key Stage 2 school years, 3-6.

We rely on a wonderful band of dedicated leaders and helpers in running the group. Weekly attendance varies, around an average of eight. Staffed by a leader and a helper. We meet each Sunday in the Sitzler Room, during the all age Morning Worship service.

In our time together we encourage the children to consider how we can relate our Christian faith to our own day to day lives and experiences. Taking a specific Bible passage and working through a variety of (hopefully, fun!) activities designed to demonstrate the key message, within a flexible but structured session framework and including personal news of our preceding week, and prayer.

A highlight this year was seeing some of our Explorers developing their faith through communion preparation classes, leading to their first communion.

*Mark, Lesley, Jessica, Anne, Lila, Keith, Mary and Gee*



## Pathfinders



Our Pathfinders group resumed separate meetings in October 2021 and our young people enjoy games, activities, discussion and prayer during the service every Sunday, except on the third Sunday where they stay in the service for Holy Communion. We often use Scripture Union's LightLive resources - The Grid - as a basis for our sessions. We have gained two volunteers to lead the group - Lauren and Ashleigh - and they are both enjoying getting to know our young people. If you are in year 7 or above, we'd love to see you in Pathfinders.

*Ian, Lauren, Ashleigh and Jen*

## Fuel

Our Fuel group has continued to meet each month during 2021. We held sessions online until the summer and then met in person from Sep-Dec. It was a real joy to be with all our young people in person again! Sessions are a mix of games, activities, discussion and prayer. We usually have between 8-12 young people join us each month from across our three Team Churches. The highlight of 2021 was the Fuel 'Sleep Out to Help Out' when 11 young people and three leaders slept overnight in St Matthew's Church raising over £1,600 for Kingston Churches Action on Homelessness. If you are in years 6-9, we'd love to welcome you along to Fuel.

*Jen Houghton and Simon Rowe*





## Other Church Groups

### Delta Homegroup

Delta Homegroup has had to adapt its meetings this year so although we've always met on a Thursday evening it has either been at Joan Scriven's between 8.00 and 10.00pm or on Zoom from 7.00-9.00pm. There are now nine members in the group. Each week we start with coffee and a chat, catching up on each other's news – this is an integral part of any homegroup as it is a time when we share our successes, joys and worries and so know how to pray for each other during the week. We then start with prayer followed by studying a book of the Bible or a study following a theme. During the past year we have studied Galatians, Journey to the Cross a Lent course by Embrace the Middle East, a course on our Motto verse and Women of the New Testament. Most of all we have fun and a lot of laughs. If you don't already belong to a group do think about joining us or one of the other groups, as it is a brilliant way to learn more about your faith, yourself and to get spiritual support to see you through the week.

*Brenda Tyrrell*

### Sigma Homegroup



The Sigma Homegroup is named after the Greek symbol for 'the sum of' and reflecting that we are diverse, yet come together for a single purpose; to study God's word.

The group is hosted by Dave & Jackie Farris and have gathered on Thursday nights since the beginning of June 2017, and continue to do so but now using the internet; learning and offering support to one another throughout the past year. We were delighted to meet face to face in our garden during the summer, and enjoy the different experience of praying together outside.

### Brunch Bunch

Brunch Bunch was unable to meet in the first part of the year, due to lockdown restrictions and did not meet virtually due to technology issues. So we were particularly pleased to reconvene in the Autumn, moving to the Sitzler room so as to allow for better ventilation and social distancing. We were delighted to be back, even more so as our first study was Ian Davies' series on our 2021 Motto Verse "I am come that you may have life, life in all its fullness". We noted that life had been perhaps less full for some of us over the last few months!

Following this we engaged in a study entitled Following Jesus, a study in the Lifebuilder series. This looked at how our faith should grow, based on various images in the New Testament, such as running a race, constructing a building or preparing for a fight (the armour of God). A community choir has started to use the Church on Monday morning, and a particular highlight following our Christmas party was to join them in some carol singing.

If you would like to know more, or to join us, please speak to me or to Helen.

*Judith Jones*

## Inspire Homegroup



Inspire has continued to meet during 2021, initially by Zoom and more recently in the Sitzler Room. Especially in the early part of the year, the focus was noticeably on 'keeping in touch'. Fellowship and friendship are key to our membership, and prayer also forms a firm foundation to all our meetings. Being in the Sitzler meant that we felt able to return to deeper study, and we have made use of video as well as paper-based courses. We have always closed our meetings with The Grace, and this is so much easier to say harmoniously when we are in the same room!

## Beta Homegroup

The Beta Home Group meets each Wednesday evening with our regular group of 11 members following a range of topics throughout the year. Due to Covid last year our regular sessions were somewhat disrupted; many were Zoom only, and unsurprisingly, some of our members were unable to participate. Despite this, we enjoyed a number of study courses including "For such a time as this" which explored ecological justice and 5 weekly videos with Justin Welby "Exploring Prayer". Since being able to get back together again, we watched a number of videos of Richard Rohr, a Franciscan priest, which discuss themes from his books "Falling Upward" and "The Universal Christ". These really challenged us, but were wonderful to work through together.



## Ruby Homegroup



Ruby Group has met at least monthly throughout the year using Zoom, with a lovely summer social in the open air. The nine of us have enjoyed studying the Lent course from St George's College, Jerusalem at the beginning of the year, some 'YouVersion' Bible app study plans and most recently, 'The Prayer Course', making use of all the online materials. We are excited to start another year of growing our faith together.

## SMarties Embroidery Group

We are now back in the church after several months meeting in Joan's garden over the summer. The weather was generally kind to us. We have been embroidering leaves to decorate the kneelers and they look wonderful! You are welcome to join us on Thursday mornings for a coffee, with your own project or to sew.



*Gill Davies*

## St Matthew's Mums' Group



Our Mums' Group has been active on WhatsApp this year as we have kept each other updated on service times, Church events and other activities happening in the area. We have enjoyed welcoming new Mums to Church through the WhatsApp group too. We had an online social evening in summer 2021 which was a chance to catch up with each another and pray for the wider group. There is an enthusiasm for in-person meetings with children again and we hope to resume these in 2022.

*Jen Houghton*

## Other Reports

### St Matthew's C of E Primary School



## BELIEVING, ACHIEVING, SUCCEEDING

The school's Eco-committee worked hard to create their Eco-Schools Green Flag Action Plan as well as making a central display board so that the whole school could see what they had been working on. The children then used the results from the Environmental Review to help them decide on the areas of focus.

These chosen topics were: School Grounds, Energy and Biodiversity.

Over the past months, school have been working to make the school grounds more attractive as well as making full use of all of the space we are fortunate enough to have. School was of course heavily impacted by Covid-19 but, fortunately, the children have been able to continue working outside. The committee worked to increase biodiversity in our school grounds, and to reduce the amount of energy we use. Eco-champions have worked hard to ensure that lights and computers are all turned off at the end of each day and the whole school learned a lot about COP-26. A London double-decker bus was purchased and installed in the school grounds with the aim of having the facility to learn more about our outside world-close at hand. It will be an excellent viewing point for studying the birds and can also help with our forest school and geography fieldwork.

Our allotment area has been worked on and is being brought back to life. Great plans have been drawn up for planting and learning about the environment. Hopefully as we learn more about careful stewardship of God's wonderful world, we shall truly live out our vision:

**'To enable our whole school community to live life in all its fullness.'**

*Pam Dryden*

## cornerHOUSE Community Arts Centre

The cornerHOUSE community arts centre continued to operate in 2021, providing both facilities for regular hirers and providing a venue for public events. Some changes had to be made to the programming during the year, and creative use of on-line opportunities and easily staged events, such as talks and other 'drop-in' events, were introduced. The centre had reduced capacity to enable social distancing and this was widely welcomed by those attending. The centre's income was consequentially and significantly reduced. Unfortunately there was no repeat of the externally-provided grant which shored finances up in 2020. With careful management of routine outgoings the impact of operational 'loss' was kept to a minimum. A significant extra sum was also spent on essential roof repairs. The centre remains viable for the foreseeable future. Sadly one PCC appointed cornerHOUSE trustee died during 2021. Paul Atkins had been involved with the arts centre since its early days, and brought his unique set of skills and talent to its operations. Paul had continued to work to support the cornerHOUSE during his protracted illness and he is sorely missed.

*Ian Davies/Andy Keane/Joan Scriven*

*PCC appointed trustees to the Douglas Centre Trust operating the cornerHOUSE community arts centre*

## 1<sup>st</sup> Tolworth (St Matthew's) Scout Group



The Group, like everyone else during the second year of dealing with Covid carried on adapting and exploring different ways of doing things. The Scout Troop still holding their meetings via Zoom, with the Beavers and Cubs Section leaders sending activities for the younger members to do, where appropriate these activities can still count towards earning an activity badge.

Zoom meetings and contact via e-mail / social media became the new normal.

St Georges Day, the day all Scouts renew their Scout promise was again disrupted and we all took the opportunity to make our promise renewal in the safety of our own homes.

We again held our Group AGM via Zoom, different but still an effective method; we had a change of Group Scout Leader and after 32 years our Group Secretary stood down, luckily a volunteer was found to take on the role. We also had a change in our Cub leadership team.

As the year progressed we had a healthy waiting list of eager young people wanting to join our Beaver colony. Work on updating the Group Website started, we also managed to give our Scout Hall a good clean and renew the old fluorescent lights with more energy efficient LED lights.

The Scout Troop managed to squeeze in a proper going away summer camp which was most welcomed by all. Following the summer break we started to hold Face to Face section meetings again, quite quickly moving onto almost normal activities. All sections reporting healthy attendances.

Remembrance Sunday was another return to normality; it was great to see so many people at Surbiton War Memorial and great to see so many youth group members attending, all looking really smart.

The 1st Tolworth Scout Group Wreath normally laid at the Polyapes War Memorial was laid at Surbiton War Memorial. Although scaled down in size we also managed to hold our November Fayre.

We also have had an Explorer section start up and they are using our Scout Hall as their meeting place. All the sections are fully supported with Strong Leadership teams in place.

So we managed the storm and rose above the challenges that presented themselves.



We worked together in true 1st Tolworth (St Matthew's) family tradition and are ready for the challenges 2022 will bring us.

*Martin Smith*

## Children's Society Report



The Children's Society is a United Kingdom national children's charity allied to the Church of England, working to transform the hopes and happiness of young people facing abuse, exploitation and neglect. The aim is to support the many affected through their most serious life challenges and the Society campaigns tirelessly for the big social changes that will improve the lives of those who need hope most.

The Covid pandemic represents a threat unprecedented in recent times when there are ever growing pressures on families and social and support services are stretched to the limit. At the same time, fund raising to meet these needs is constrained. St Mathew's congregation raised £403.53 at the Christingle service and £469.01 with house collection boxes. A magnificent achievement. On behalf of the Society, thank you so much for your generosity. Please take a look at [www.childrenssociety.org.uk](http://www.childrenssociety.org.uk) to learn more about the activities and initiatives taking place and how you can help.

*Paul Mackie*

**Parish of St Matthew's Surbiton**  
**Accounts for the Year Ending 31 December 2021**



## INDEPENDENT EXAMINER'S REPORT TO THE PCC OF ST MATTHEW'S SURBITON

I report on the accounts of the church for the year ended 31 December 2021 which are set out on pages 2 to 10.

### Respective Responsibilities of Trustees and Examiner

The church's trustees are responsible for the preparation of the accounts. The church's trustees consider that an audit is not required for this year under section 144(2) of the Charities Act 2011 (the 2011 Act) and that an independent examination is needed.

It is my responsibility to:

- Examine the accounts (under section 145 of the 2011 Act);
- To follow the procedures laid down in the General Directions given by the Charity Commissioners (under section 145(5)(b) of the 2011 Act); and
- To state whether particular matters have come to my attention.

### Basis of Independent Examiner's report


My examination was carried out in accordance with the general Directions given by the Charity Commission. An examination includes a review of the accounting records kept by the charity and a comparison of the accounts presented with those records. It also includes consideration of any unusual items or disclosures in the accounts, and seeking explanations from you as trustees concerning any such matters. The procedures undertaken do not provide all the evidence that would be required in an audit and consequently no opinion is given as to whether the accounts present a 'true and fair view' and the report is limited to those matters set out in the statement below.

### Independent examiner's statement

Since the gross income for the year exceeds the amount provided in section 145(3) of the Act, I confirm that I am qualified to act as Independent Examiner under the provisions of that section of the Act and that my qualification is as shown below.

In connection with my examination, no matter has come to my attention:

1. which gives me reasonable cause to believe that in any material respect the requirements
  - to keep accounting records in accordance with section 130 of the 2011 Act; and
  - to prepare accounts which accord with the accounting records and comply with the accounting requirements of the 2011 Act have not been met; or
2. to which, in my opinion, attention should be drawn in order to enable a proper understanding of the accounts to be reached.

  
Mr George Mitchell ACA  
51 Langdon Park  
Teddington  
TW11 9PR

Dated: 7 February 2022

PAROCHIAL CHURCH COUNCIL OF ST MATTHEW'S SURBITON

STATEMENT OF FINANCIAL ACTIVITIES

FOR THE YEAR ENDED 31 DECEMBER 2021

	Note	Unrestricted Funds £	Restricted Funds £	Total Funds	
				2021 £	2020 £
INCOME					
Voluntary income	2(a)	132,253	53,679	185,932	166,886
Activities for generating funds	2(b)	4,457	-	4,457	2,755
Income from investments	2(c)	15,955	-	15,955	16,872
Income from church activities	2(d)	2,692	-	2,692	1,764
TOTAL INCOME		<u>£ 155,357</u>	<u>£ 53,679</u>	<u>£ 209,036</u>	<u>£ 188,278</u>
EXPENDITURE					
Church Activities	3	199,379	14,549	213,928	259,539
TOTAL EXPENDITURE		<u>£ 199,379</u>	<u>£ 14,549</u>	<u>£ 213,928</u>	<u>£ 259,539</u>
NET INCOME (EXPENDITURE) BEFORE INVESTMENT GAINS		(44,022)	39,131	(4,891)	(71,261)
NET GAINS ON PROPERTY/INVESTMENTS		-	-	-	-
Transfers between Funds	4	24,095	(24,095)	-	-
NET MOVEMENT IN FUNDS		(19,927)	15,035	(4,891)	(71,261)
RECONCILIATION OF FUNDS					
TOTAL FUNDS BROUGHT FORWARD		863,635	8,688	872,322	943,583
TOTAL FUNDS CARRIED FORWARD		<u>£ 843,708</u>	<u>£ 23,723</u>	<u>£ 867,431</u>	<u>£ 872,322</u>

# PAROCHIAL CHURCH COUNCIL OF ST MATTHEW'S SURBITON

## BALANCE SHEET AT 31 DECEMBER 2021

	<u>Note</u>	<u>2021</u> £	£	<u>2020</u> £	£
FIXED ASSETS	6				
Tangible assets			656,342		650,000
CURRENT ASSETS	7				
Investments		-		-	
Debtors & prepayments		18,134		11,568	
Short term deposit		207,317		212,317	
Cash at bank and in hand		5,816		24,146	
		<u>231,267</u>		<u>248,031</u>	
LIABILITIES: AMOUNTS FALLING DUE WITHIN ONE YEAR	8	<u>20,178</u>		<u>25,709</u>	
NET CURRENT ASSETS			211,089		222,322
TOTAL NET ASSETS	9		<u>£ 867,431</u>		<u>£ 872,322</u>
PARISH FUNDS	10				
Unrestricted			843,708		863,635
Restricted			23,723		8,688
TOTAL PARISH FUNDS			<u>£ 867,431</u>		<u>£ 872,322</u>

Approved by the Parochial Church Council on 15 March 2022 and signed on its behalf by:



H. Hancock (Chair)



T Lucas (Treasurer)

The notes on pages 4 to 10 form part of these accounts.

# PAROCHIAL CHURCH COUNCIL OF ST MATTHEW'S SURBITON

## NOTES TO THE FINANCIAL STATEMENTS

FOR THE YEAR ENDED 31 DECEMBER 2021

### 1. ACCOUNTING POLICIES

#### Basis of preparation

The PCC is a public benefit entity within the meaning of FRS102. The financial statements have been prepared under the Charities Act 2011 and in accordance with the Church Accounting Regulations 2006 governing the individual accounts of PCCs, and with the Regulations' "true and fair view" provisions, together with the Statement of Recommended Practice, Accounting and Reporting by Charities SORP (FRS102).

The financial statements have been prepared under the historical cost convention other than in the case of property. The financial statements include all transactions, assets and liabilities for which the PCC is responsible in law. They do not include the accounts of church groups that owe their main affiliation to another body, nor those that are informal gatherings of church members.

#### Funds

*Restricted funds* represent (a) income from trusts or endowments which may be expended only on those restricted objects provided in the terms of the trust or bequest, and (b) donations or grants received for a specific object or invited by the PCC for a specific object. The funds may only be expended on the specific object for which they were given. Any balance remaining unspent at the end of each year must be carried forward as a balance on that fund.

*Unrestricted funds* are general funds which can be used for PCC ordinary purposes.

#### Income

Planned giving, collections and donations are recognised when received. Tax refunds are recognised when the incoming resource to which they relate is received. Grants and legacies are accounted for when the PCC is legally entitled to the amounts due and the amount can be ascertained with reasonable certainty. Interest is accrued and all other income is recognised when it is receivable. All incoming resources are accounted for gross. The value of any voluntary help received is not included in the accounts but is described in the PCCs' annual report.

#### Expenditure and liabilities

Liabilities are recognised as soon as there is a legal or constructive obligation and settlement is probable and quantifiable. Grants and donations are accounted for when paid over, or when awarded, if that award creates a binding or constructive obligation on the PCC. The diocesan parish share is accounted for when paid or committed by the PCC to be paid in respect of the relevant accounting period. All other expenditure is generally recognised when it is incurred and is accounted for gross.

#### Fixed Assets

Consecrated and benefice property is excluded from the accounts in accordance with s10(2)(a) of the Charities Act 2011.

#### *Movable church furnishings*

Movable church furnishings are capitalised at cost and depreciated over their anticipated useful economic life except where there is insufficient information about costs or where the cost is less than £1000. These assets are listed in the church's inventory which can be inspected.

#### *Other land and buildings*

Other land and buildings held by the PCC are valued at estimated market value. A valuation is undertaken every three years. No depreciation is charged against such properties but any expenditure on maintenance is written off when incurred.

#### *Other fixtures, fittings and office equipment.*

Equipment used within the church, or church office, not falling into the categories mentioned above, and costing more than £1,000 is capitalised and depreciated on a straight line basis over its anticipated useful economic life.

#### Current Assets

Amounts owing to the PCC are shown as debtors. A provision is made if any amounts are uncollectable. Short term deposits include cash held on deposit either in the CBF Church of England fund or at a bank or other authorised financial institution.

# PAROCHIAL CHURCH COUNCIL OF ST MATTHEW'S SURBITON

## NOTES TO THE FINANCIAL STATEMENTS

FOR THE YEAR ENDED 31 DECEMBER 2021

### 2. INCOME

	Unrestricted Funds	Restricted Funds	Total Funds	
	£	£	2021 £	2020 £
2(a) Voluntary income				
Tax efficient planned giving	97,551	3,480	101,031	101,594
Other planned giving	2,087	-	2,087	2,095
Collections	2,323	1,051	3,374	4,350
Other giving and voluntary receipts	703	18,101	18,804	8,792
Tax recoverable	25,004	4,717	29,722	27,736
Legacies	-	-	-	-
Grants (inc VAT recoverable)	4,585	26,330	30,915	22,319
	<u>132,253</u>	<u>53,679</u>	<u>185,932</u>	<u>166,886</u>
2(b) Activities for generating funds				
Fundraising events	263	-	263	329
Church lettings	1,740	-	1,740	(50)
Church hall income	2,454	-	2,454	2,476
	<u>4,457</u>	<u>-</u>	<u>4,457</u>	<u>2,755</u>
2(c) Income from investments				
Dividends and interest	185	-	185	1,103
Ellerton Road rent	15,770	-	15,770	15,770
	<u>15,955</u>	<u>-</u>	<u>15,955</u>	<u>16,872</u>
2(d) Income from church activities				
Wedding and funeral fees	2,692	-	2,692	1,764
Church events	-	-	-	-
	<u>2,692</u>	<u>-</u>	<u>2,692</u>	<u>1,764</u>
TOTAL	<u>£ 155,357</u>	<u>£ 53,679</u>	<u>£ 209,036</u>	<u>£ 188,278</u>

# PAROCHIAL CHURCH COUNCIL OF ST MATTHEW'S SURBITON

## NOTES TO THE FINANCIAL STATEMENTS

FOR THE YEAR ENDED 31 DECEMBER 2021

### 3. EXPENDITURE

	Unrestricted Funds	Restricted Funds	Total Funds	
	£	£	2021 £	2020 £
Church Activities				
Mission & Charitable Giving	12,767	4,818	17,585	13,708
Major works and repairs	48,332	5,789	54,121	91,419
Diocesan parish share	80,300	-	80,300	81,200
Music	4,762	-	4,762	5,322
Professional fees	15,900	162	16,062	15,595
Church maintenance	3,109	-	3,109	9,682
Insurance	12,904	-	12,904	12,967
Gas, electricity and water	4,791	-	4,791	5,028
Administration	6,649	-	6,649	6,917
Other	4,448	3,669	8,117	5,947
Ellerton road costs	3,893	-	3,893	9,332
Mission & ministry	1,525	111	1,636	2,422
<b>TOTAL</b>	<b>£ 199,379</b>	<b>£ 14,549</b>	<b>£ 213,928</b>	<b>£ 259,539</b>

### 4 ANALYSIS OF TRANSFERS BETWEEN FUNDS

	General Fund £	Gift Day Fund £	Tower & Spire Fund £	Development Fund £
Fund Transfers	<u>24,095</u>	<u>(7,927)</u>	<u>(8,317)</u>	<u>(7,851)</u>

Part of the proceeds from the gift day were used to purchase audio visual equipment. This equipment has no restrictions attached to it and consequently has been transferred to the general fund.

The general fund provided more monies than required to the Tower and Spire Fund in prior years. The excess has now been returned.

The development fund balance should have been used for the work on the toilets in prior years but instead this was funded by Tower and Spire fund using monies transferred from the general fund. These monies have now been reimbursed.

# PAROCHIAL CHURCH COUNCIL OF ST MATTHEW'S SURBITON

## NOTES TO THE FINANCIAL STATEMENTS

FOR THE YEAR ENDED 31 DECEMBER 2021

### 5 STAFF COSTS

	Unrestricted Funds	Restricted Funds	Total Funds	
	£	£	2021 £	2020 £
Salaries	8,589	2,604	11,193	8,493
Employers National Insurance	-	-	-	-
Pension Costs	-	-	-	-
	<u>£ 8,589</u>	<u>£ 2,604</u>	<u>£ 11,193</u>	<u>£ 8,493</u>

The average number of staff employed during the year was 3 (2020: 2).

### Payments to PCC members and associates

Simon Hancock is paid for the services rendered as Director of Music. He is the husband of the PCC Chair. He was paid £3,000 in 2021 (£3,000 in 2020).

### 6 FIXED ASSETS

		Freehold Land & Buildings
<b>Tangible</b> (unrestricted)		
VALUATION	At 1 January 2021	650,000
	Revaluation	-
	At 31 December 2021	<u>£ 650,000</u>
		AV Equipment
COST	At 1 January 2021	-
	Additions at cost	7,927
	At 31 December 2021	<u>£ 7,927</u>
DEPRECIATION	At 1 January 2021	-
	Charge for the year	1,585
	At 31 December 2021	<u>£ 1,585</u>
NET BOOK VALUE	At 31 December 2021	<u>£ 6,342</u>
	At 31 December 2020	<u>£ -</u>
TOTAL	At 31 December 2021	<u>£ 656,342</u>
	At 31 December 2020	<u>£ 650,000</u>

The freehold land and buildings comprises the house and land at 172 Ellerton Road. The AV equipment is being depreciated over 5 years on a straight line basis.



# PAROCHIAL CHURCH COUNCIL OF ST MATTHEW'S SURBITON

## NOTES TO THE FINANCIAL STATEMENTS

FOR THE YEAR ENDED 31 DECEMBER 2021

### 7 CURRENT ASSETS

Debtors	2021	2020
Tax recoverable	12,893	6,850
Prepayments and accrued interest	4,721	3,671
Other debtors	520	1,047
	<u>£ 18,134</u>	<u>£ 11,568</u>

The debtor split between funds is as follows

Unrestricted	17,578	10,730
Restricted	556	838
	<u>£ 18,134</u>	<u>£ 11,568</u>

### 8 LIABILITIES: AMOUNTS FALLING DUE WITHIN ONE YEAR

	2021	2021
Deposits in advance	-	500
Accruals	687	815
Other creditors	19,491	24,394
	<u>£ 20,178</u>	<u>£ 25,709</u>

The creditor split between funds is as follows

Unrestricted	19,360	10,324
Restricted	818	15,385
	<u>£ 20,178</u>	<u>£ 25,709</u>

### 9 ANALYSIS OF NET ASSETS BY FUND

	Unrestricted	Restricted	Total
Fixed assets	656,342	-	656,342
Current assets	206,726	24,541	231,267
Current liabilities	(19,360)	(818)	(20,178)
Fund balance	<u>£ 843,708</u>	<u>£ 23,723</u>	<u>£ 867,431</u>

PAROCHIAL CHURCH COUNCIL OF ST MATTHEW'S SURBITON

NOTES TO THE FINANCIAL STATEMENTS

FOR THE YEAR ENDED 31 DECEMBER 2021

10 FUND DETAILS

	Balance b/fwd at 1 Jan 2021 £	Income £	Expenditure £	Investment Gains/ Revaluation	Transfer to/from Funds £	Balance c/fwd at 31 Dec 2021 £
Unrestricted Funds:						
General	213,635	155,357	199,379		24,095	193,708
Property	650,000	-	-	-	-	650,000
Total	<u>£ 863,635</u>	<u>£ 155,357</u>	<u>£ 199,379</u>	<u>£ -</u>	<u>£ 24,095</u>	<u>£ 843,708</u>
Restricted Funds:						
Tower & Spire	- 8,096	22,330	4,180	-	- 8,317	1,737
Organ	7,433	4,238	-	-	-	11,670
Special Offerings	- 0	821	821	-	-	- 0
Youth Mission	1,500	-	-	-	-	1,500
Development	7,851	-	-	-	- 7,851	-
Gift Day	-	20,705	4,000	-	- 7,927	8,778
Gift	-	419	419	-	-	-
Micro	-	500	500	-	-	-
Roof	-	3,000	3,000	-	-	-
Stonework	-	1,500	1,500	-	-	-
Sundries	-	168	129	-	-	39
Total	<u>£ 8,688</u>	<u>£ 53,679</u>	<u>£ 14,549</u>	<u>£ -</u>	<u>£ 24,095</u>	<u>£ 23,723</u>
Funds Total	<u>£ 872,322</u>	<u>£ 209,036</u>	<u>£ 213,928</u>	<u>£ -</u>	<u>£ -</u>	<u>£ 867,431</u>

**Fund Particulars**

Property - the fund holding 172 Ellerton Road.

Tower & Spire - monies donated for the Tower & Spire project.

Organ - monies donated for major works on the organ.

Special Offerings - monies donated for mission and charities.

Youth Mission - monies donated to support mission amongst the youth of the parish

Development - monies donated for internal church redevelopments.

Gift Day - monies donated for various church works including AV equipment

Gift - monies donated for the departing vicar of St George's Tolworth.

Micro - a diocesan grant to support various projects including the Balance Café

Roof - a grant received for work on the roof of the church.

Stonework - a grant received for repairs to the stonework.

Sundries - monies donated for various small items.

PAROCHIAL CHURCH COUNCIL OF ST MATTHEW'S SURBITON

NOTES TO THE FINANCIAL STATEMENTS

FOR THE YEAR ENDED 31 DECEMBER 2021

<b>11 CHARITABLE DONATIONS</b>	<b>2021</b>	<b>2020</b>
KCAH (inc Joel Trust)	3,386	2,898
Christian Aid	2,063	-
Church Mission Society	1,915	2,030
Church Urban Fund	1,915	2,030
Oxygen	1,777	1,350
Fircroft Trust	1,777	1,350
Church Pastoral Aid Society	1,277	1,350
Street Pastors Kingston	1,277	1,350
Barnfield Riding	638	-
Milaap	500	-
A Rocha	319	450
Staywell	319	-
African Vision Malawi	248	-
Children's Society	138	-
Embrace the Middle East	37	-
Operation Noah	-	450
Kingston Foodbank	-	250
Friends of Fishponds Park	-	100
Friends of Berrylands Nature Reserve	-	100
	<u>£ 17,585</u>	<u>£ 13,708</u>

Most of the above was funded from general giving but £4,000 was funded from Gift Day donations.

The end of this report is always dedicated in grateful thanks to those whose hard work has been recorded and to those who remain the unsung heroes of our church.

This report can be no different.

Everyone's contribution ensures the success of the whole and it couldn't be done without YOU. Whether you have a title or a specific role, whether you are part of a team or work on your own, together we are the body of Christ offering ourselves in service of the Kingdom of God. For some this will be the quiet ministry of faithful prayer at home, for others it means taking a prominent role 'up front'.

There is no pecking order – no one's service is more valuable than anyone else's.

We also must record our thanks for those who, so generously, give financially to the church. There are many calls upon all of our finances and this will not change, but the Church is supported by the faithful giving of many who acknowledge that all that we have comes from God and the opportunity to give to the Church is the opportunity to respond to God's generosity to us.

**We are all called to take part in God's plans for us and our church.**

Now to him who by the power at work within us  
is able to accomplish abundantly far more than all we can ask or imagine,  
to him be glory in the church and in Christ Jesus to all generations,  
for ever and ever. Amen.

Ephesians 3. 20-21