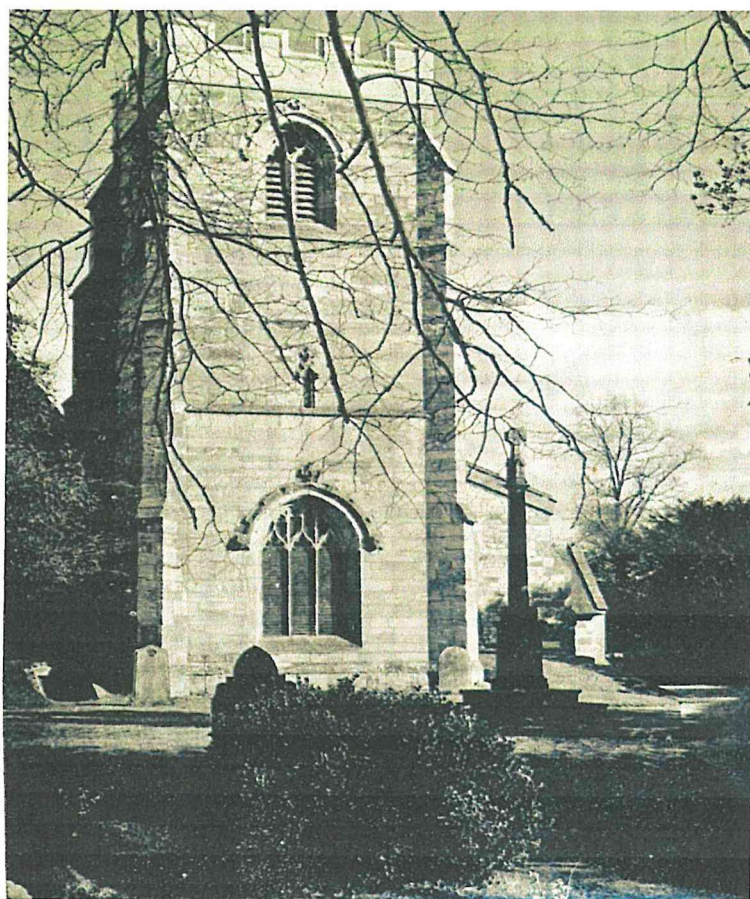


St. Peter's Church, Wellesbourne



SUMMARY REPORT OF THE PAROCHIAL CHURCH COUNCIL FOR THE YEAR ENDED 31ST DECEMBER, 2022

Vicar:	Revd Greg Bartlem
Churchwardens:	Jann Wallace Bob White
Secretary:	Ros Jarrett
Treasurer:	Jann Wallace
Independent Examiner:	Malcolm Edge
Bank	Barclays Bank Ltd. Market Cross, Stratford-upon-Avon
Central Board of Finance	Church of England Funds

Aim and Purposes

St. Peter's Parochial Church Council (PCC) has the responsibility of co-operating with the incumbent, the Reverend Greg Bartlem, in promoting in the ecclesiastical parish the whole mission of the Church, pastoral, evangelistic, social and ecumenical.

The PCC is also specifically responsible for the maintenance of the Church, Church Centre and grounds of St. Peter's Church, Church Street, Wellesbourne.

Objectives and Activities

St. Peter's Church aims to be a broad church for everyone in Wellesbourne. Our objectives are to worship God, make new disciples, and transform communities. The PCC maintains an overview of these objectives, seeking to ensure that the activities we offer appeal to a wide variety of Wellesbourne people of all ages, temperaments and backgrounds.

It is important that we maintain the fabric of the Church, Church Centre and grounds to facilitate this work.

Electoral Roll and Attendance

The Church's Electoral Roll is the register of its voting members. As of January 2023 the number on the roll was 137. Church attendance figures were encouraging with new people joining us. Additionally, special services throughout the year, such as Remembrance, Christmas and Easter were well attended.

Achievements and Performance

Worship and Prayer

The pattern of worship and prayer at St Peter's seeks to cater for a wide range of people. Aside from periods of lockdown our regular pattern of services, throughout 2022 took the following form:

Sundays

- 10am Family Communion in Church
- 10am Connections: informal, contemporary worship in the Church Centre

St Peter's continues to recover well from the effects of the Covid19 pandemic. With restrictions being lifted during 2022, we were once again able to enjoy sitting together and singing without the need to wear a mask!

The services themselves were ably supported by Jackson Towers, the Director of Music and organist, and also by Helen Smith who led our informal worship. The St Peter's Singers enhanced our worship considerably through their singing. We would also like to thank Jann Wallace and Steve Hood who put together the PowerPoint presentations each week.

In addition to the regular online services, we continued to hold 'Night Prayer' on Wednesdays. This has been well supported with at least 10 people present each week.

'Prayer and Pizza' a weekly group for older Primary School children to develop their Christian faith, continued to grow during the year and it was good to see our young people really starting to 'own' their Christian faith.

The Young People, made a great gospel contribution to our Crib and Christingle service at Christmas, the church was packed and this was a real high point for the year.

There were many challenges for us as a church during 2022 but we came through them intact due to the willingness of the teams to 'go the extra mile'

Prayer Chain: The Prayer Chain consists of a group of people who pray in confidence for those in need. We take calls for the sick, dying and those in various kinds of trouble, both for themselves and on behalf of others. We explain to them that we pray for a week and encourage them to ring again to request more prayer if needed.

Discipleship & Pastoral Care

Home Groups: St Peter's Church has 8 small groups, which act as 'church in the small', places to pray and learn together. During the summer of 2022, the groups created and led the Sunday morning services. We are truly grateful for all the leaders who support, host and serve the groups. Around seventy people make up our eight small groups.

Children and Young People: The Prayer and Pizza group ably led by Fiona Stutton, is successfully supporting young people of school years 5, 6 and 7. This group has grown to 14 young people attending regularly. We are grateful to Mother's Union for providing the funding for the pizzas.

In addition, Little Angels, a group for pre-school children and their parents, restarted on Mondays. This too is going well.

St Peter's also runs an Open Youth Club on Monday evenings attracting around 15 teenagers per week.

Mothers' Union: Meetings started again in February with the AGM, and they have met each month except for April as Easter fell near the scheduled meeting date. The July meeting was cancelled due to the extreme heat. The normal meeting day is the third Tuesday of the month. Mothers' Union have enjoyed a number of events: a quiet afternoon, Christmas card making, candlestick flower arrangement, curing souls to creating art, and Elizabeth Horton gave a very interesting talk about her work as a geriatric consultant. The year ended with a carol service at the vicarage by kind invitation of Greg and Catherine.

The Mothers' Union have also been quite busy during the year with other projects. They knitted Easter chicks which they filled with a creme egg, which were given to Coffee Tots mums for their children, and also to members of the Prayer and Pizza group and St Peter's youth group.

For the sixth year running The Heart of England Cycle Club asked Mothers' Union to provide cakes and savoury snacks for sale, plus hot and cold drinks, which raised £120 for MU funds. They received a letter from the cycle club expressing their thanks, along with a donation of £25 for MU funds. A date has already been booked for May 2023 for MU to provide refreshments once again. New members are always welcome.

Home Communion: Home Communion visits are made to members of our congregation who are unable to physically attend communion services at St Peter's Church. Twenty people currently receive home communion each month served by a team of eight people which includes the clergy. We also continue to offer communion services at both Lawrence Mackie House and Ettington Lodge sheltered housing during the second week of every month.

Outreach and Community Work

Wendy Biddington led again on this valuable work in 2022 and we are most grateful for her compassion towards some of the most vulnerable people in our village. This work is only possible because there are different teams of volunteers supporting it by giving their time and energy.

We would like to thank all involved in whatever capacity in the groups below. Our thanks also to the voluntary and statutory agencies with whom we work in all sorts of ways such as Lions, CAB, the medical centre, Orbit, Warwickshire Welfare and P3 to name a few.

Community fund: This happens quietly and discreetly as confidentiality is incredibly important because some clients have to hide their identity. Our thanks to the Lions who often help to co-fund gifts or transport furniture for us. Our thanks to a member of the Methodist church for the use of half their garage to store essential furniture. This was wonderfully used again this year for someone who had to flee their marital home and we were able to furnish their flat. We've also purchased white goods for folk who had no additional funds to purchase such items. My thanks to those who have given so generously over the past year – your gifts are enabling us to bring blessing to others.

Foodbank: Again the donations to foodbank have been overwhelmingly generous. Thank you to everyone for your support and generous donations for the year 2022. In Wellesbourne we collected a total of 5,814Kg. We made 101 home visits and were able to provide food to 182 adults and 93 children. Year on year we see an

increasing demand for food. Our thanks to Sainsbury's, Co-op, One Stop Bridge Street and Newbold Road, Ettington Lodge, the surgery and Wellesbourne churches who provide space for donation boxes.

Thank you that we can step in so that folk in our village don't go hungry. Again we gave out Easter and Christmas hampers which were really appreciated. Our thanks to the team of collectors who take food down to the warehouse at Kineton and bring the order back to our store in Ettington Lodge. Thanks to the team who look after the store and thanks to the team that take emergency food boxes out to clients. We are a seven day a week service during daylight hours.

Ettington Lodge: It is such a privilege, along with Pam Norton, to be able to meet with residents to share Holy Communion on the second Monday of the month and run a homegroup on the fourth Monday of the month. We always end with a lovely chat and cuppa.

Linen and curtain store: We don't access this very often but when we do its usually needed immediately.

Wellesbourne and Walton Community Cares (WW-CC): Each member of the management team has a specific role/area of responsibility. Do look on our website - <https://www.ww-cc.co.uk> - as this is now updated regularly with photos and news. We reviewed our activity at the end of the year and decided to close the befriending service as many befrienders had made personal friendships with the befriended. Future requests for befriending will be referred to Age UK. We have also removed the phone line as were so few calls.

In the summer we were at last able to deliver our Holiday-at-Home scheme for three days in both May and August. We had 20-25 'holidaymakers' who didn't have to pack a suitcase or sleep in a strange bed and who imagined they were at the seaside. Transport was provided, activities were seaside-orientated as was the food, then transport home. It was thoroughly enjoyed by participants and volunteers alike. Thanks to all our volunteers – this was a huge undertaking. As we had the transport for the whole day we took residents from the sheltered housing schemes out for coffee late morning so a further 45 folk had an outing. We followed each scheme by a reunion lunch a month later so folk could renew friendships.

At Christmas we had our first OSCARS tea since lockdown. It was one of those snowy spells so numbers were reduced. However, those who attended enjoyed a lovely tea, carol singing and a raffle. Transport was provided.

Plans for 2023-2024

- Warm hub to become Meet&Eat in the Methodist Church every Wednesday for a light lunch
- Three OSCARS teas – Easter, Summer and Christmas
- Holiday At Home in June for 30 'holidaymakers'
- Raising awareness of volunteering opportunities over the Coronation weekend
- Attendance at a carers event in April

Pastoral Office: We conducted 10 baptisms, 4 weddings and 21 funerals (8 in church and 13 at the crematorium).

Wellesbourne C of E Primary School: St Peter's enjoys a very warm and positive relationship with the school. We supported our school by providing a Foundation Governor (Pam Norton) and our Vicar is the School Chaplain and Chair of the Christian Foundation Team, which is a subgroup of the Governors. The school children attended 8 church services at St Peter's during 2022 as well as many Christian assemblies at the school from both the 'Open the Book' team (led by William Howard) and members of the church.

St Peters' Wellesbourne Youth Services aims to help the young people of Wellesbourne (age 10-18 years) to grow as individuals and as members of society through the provision of a range of activities that

- (1) develop their social, physical, mental and spiritual capacities, promoting self-worth, independence, a sense of responsibility and respect for others, delivered with an underlying Christian ethos
- (2) provide opportunities to explore Christian faith,
- (3) nurture the faith of those who are Christians.

The Monday night Youth Club attracts on average 15 teenagers each week to its sessions.

Little Angels: After a gap of two years, Little Angels re-opened in May 2022 with a new clientele of children and a rota of new helpers. All our previous children had moved on to school or nursery during the Pandemic, so we have started afresh with children born during or since Lockdown, who we hope will be able to come for a good while. It means that they are at the stage where any developmental issues are only just beginning to be addressed, an anxious time for Mums, who need the support of others. Attendance ranges from 3 to 11, but averages 6, depending on how many "Little Angels" happen to have fallen asleep for a nap at the crucial moment! Thank you to Margaret Howard and a much appreciated team of 7 helpers

Mission Partners: St Peter's supported The Amasango School for street children in Grahamstown, South Africa, and Malawi Eagles, a charity which specialises in supporting the poorest people in Malawi. The donations relating to the 2022 mission giving were made early in 2023, £1,000 per charity.

Friends of St. Peter's: In 2022 we continued to provide the brunch breakfasts on a monthly basis which have proved to be very popular and are growing in size. The Friends also provided refreshments at St Peter's Christmas Fair. They would usually provide refreshments at the village community fayre but this was cancelled due the death of our Queen. We are always looking for fresh members to increase our team.

Facilities/Premises

The Fabric Committee: The Fabric Committee met on five occasions since the last report, all in person. They discussed and dealt with various issues of maintenance and improvement. In addition to the general annual maintenance, additional works were carried out as recommended in the Quinquennial Inspection. These works included minor repairs to roofing and flashings; new safety glass in the Bell Ringers Chamber, and major pruning of trees in the churchyard together with stabilising some old headstones.

We have submitted 2 faculty applications in the past 12 months.

- The Installation of a roll-down screen in the Lady Chapel. This application has been approved and the works should be completed by mid-2023.
- To deep clean and make some alterations to the organ. We are still in negotiation with the Diocese trying to obtain approval.

The following faculty applications were approved in 2022.

- The renovation of the Aylworth Tomb. We are now looking at ways to raise finances for the works.
- The installation of new cupboards at the south end of the west aisle together with new entrance matting. This work has been completed successfully.
- The installation of an additional toilet in what was the flower arrangers' cupboard. Building Regulation approval was also obtained. These works are ongoing and should be completed by the time of the APCM.
- Planting of a tree to mark the Platinum Jubilee.

The Church Centre: The Church Centre Committee met three times during 2022. The members of the committee are: Revd Greg Bartlem, Bob White, Veronica Quinn, Michael Dane, William Howard and Peter Quinn (chair) with Ros Jarrett in attendance. The Church Centre bookings have taken some time to recover from the effects of Covid19. However, 2022 has seen a lot of our regular lettings rebook. We are also getting quite a number of casual users such as children's parties at weekends. The upstairs room previously used as an office is now in its second year with HomeStart and is let to them on a monthly basis.

With the sudden rise in utility costs we have now increased the hirer rates for the various rooms and they are shown on the website. We have also increased the rent for Homestart. Our cleaner is Andrea Ball who is now in her fifth year with us and cleans the centre on a demand basis. During Lockdown, she also completed extra cleaning which has now stopped and the usual cleaning work has been resumed.

Bell Ringing: Since we restarted our weekly Thursday night practice, we have a good regular band turn up to ring. We also have our faithful local regular Sunday morning ringers. Our ringing times on Sunday mornings are 9.30 until 9.55am and practice night is on Thursdays 7.30pm until 9.00pm.

We again managed to have our annual Christmas dinner in December at the King's Head where 21 ringers, spouses and friends enjoyed good food and fellowship. We hope to recruit new members during the coming year so that we have a full band to ring on Sundays and also for special occasions such as "Ring for The King". Our band is closely associated with the Coventry Diocesan Guild of Church Bell Ringers and the Four Shires Guild of Bell Ringers.

The Churchyard was well maintained and much appreciated by many families. We are grateful to the Parish Council for arranging and paying for some of the grass cutting. Burials and interments of ashes continued in the new churchyard extension which begins to look more established. Significant tree maintenance was carried out in the autumn.

The Health and Safety team, which is a sub group of the Fabric Committee, continues to review and work on processes and documents to keep our buildings and church activities safe. A safety log has been set up to ensure that inspections and work are kept up to date.

Communications

Church Website

The Church website www.stpeterswellesbourne.org.uk is being updated regularly by Michael Dane and currently the twice-weekly newsletters and the YouTube service links are added each week. The website continues to get 10 - 15 visits a day; the main pages visited are the newsletters and the sermons on YouTube. In addition to the main church website, each month the Wellesbourne & Walton News web page gets 20 - 30 visits (although during the first Lockdown it was getting up to 50 a day) and the Churchyard about 5.

The Wellesbourne and Walton News:

The magazine during 2022 continued to be very well-received by the village. The very varied articles are enjoyed and the striking use of colour and design makes it a different surprise each month. However, the last year saw some major changes and challenges.

Firstly, printing costs have steadily risen by almost half since October 2021. Despite putting up our rates by a similar amount, advertising revenue has not been able to keep pace with this. This is largely due to several long-standing advertisers having retired and new ones have not come forward to fill the gap. Many small businesses are struggling to survive in the current economic climate and those that are getting sufficient custom prefer not to advertise rather than disappoint potential customers. Few see it any more as an opportunity to support the community. The result is the large deficit at the end of 2022. In 2023 we have taken on a new volunteer who is working to increase our advertising, and the Parish Council has awarded WWN a one-off grant of £2,000 for which we are extremely grateful.

Secondly, in August we learned that Warwick Printers were closing and we had to find new printers at short notice. Fortunately, a printing consultant whom we had dealt with in the past approached us and gave a quotation which was not much more than we had been paying. As he agreed with all our terms and no other printers came near the price, we were very glad to accept the offer.

Finally, in October, Mac Parry went into hospital and Linda Dane had to complete the November issue. Sadly, Mac did not recover and died in December. His loss has left a huge hole in the organisation of the magazine.

Since November, Linda Dane has been doing the editing, the diary page, managing the advertising, maintaining the finances and organising and carrying out much of the distribution. Although she enjoys it, it is not something she can continue to do indefinitely as it takes up most of her time. David Close has been working hard to attract new volunteers to take on some of the work, but with limited success to date.

The future of the magazine in its present form is, therefore, in some doubt. Producing 12 issues a year is becoming untenable financially and although the production team is now slightly larger, there is still no-one to share the essential roles of editor or the management of distribution. It is likely changes will have to be made on how the magazine is produced.

Linda would like to thank in particular her husband, Michael, for his support and for giving up about three days a month to deliver the magazines, David and Carol Sampson and Jenny Shorrocks who have been reading and correcting articles as they come in, Christopher Lamb for reading the final proofs, and Daren Bird for all the artwork and layout.

Volunteers

We are most grateful to a myriad of volunteers who undertook tasks which kept the church going through the difficult year. The church is also most grateful to our vergers Michael Dane, Cyril Loman and Pam Garnett along with all the other members of the PCC for their valuable contribution to our ministry and for keeping the church running.

Churchwardens: Jann Wallace and Bob White served us faithfully as Churchwardens during what proved to be another challenging year. The Inventory, Logbook and Terrier have been kept up to date, and the various works undertaken have been recorded and reported in the Fabric Report to the PCC.

Structure, Governance and Management

The method of appointment of PCC members is set out in the Church Representation Rules. At St. Peter's the membership of the PCC consists of the incumbent (the vicar), churchwardens and members elected by those members of the congregation who are on the electoral roll of the church. All those who attend our services/members of different congregations are encouraged to register on the Electoral Roll and stand for election to the PCC.

The PCC members are responsible for making decisions on all matters of general concern and importance to the parish including deciding on how the funds of the PCC are to be spent.

St. Peter's is registered as a Charity with the Charity Commission (Charity Number 1143822). This report is submitted to the Charity Commission each year.

The PCC met six times during the year. In addition, the APCM was held on 22nd May. Given its wide responsibilities the PCC has a number of Committees each dealing with a particular aspect of our parish life. These Committees which include Church Centre, Fabric and Finance are all responsible to the PCC and report back to it, with minutes of their deliberations and recommendations being received by the full PCC and discussed and approved as appropriate.

Deanery Synod provides a link between the parish and the rest of the deanery and beyond to the wider diocese.

Safeguarding Continued to be treated as very important at St Peter's. We have worked to implement 'Safer Recruitment' guidance in taking up DBS checks and references for volunteers and paid staff. Staff and volunteers undertake training (where appropriate to the role) which is available both online (e-learning module, C0) and in group format (basic training module, C1). We are still without a Safeguarding Officer but Catherine Bartlem has been covering the role and has reported regularly to PCC meetings and updated the Safeguarding Dashboard with the Diocese of Coventry, which gives us a monthly update of what areas of our work need further actions such as adopting new policies, training or changing what we do.

The Church Office: Administrator Ros Jarrett provided administrative support to St Peter's for 16 hours a week.

The Ministry Staff Team: co-ordinates the ministry of St Peter's under the leadership of the Vicar. Core members in 2022 were the Revd Steve Hood (until his sabbatical in May) Lynn Darby, Jann Wallace, Bob White, David Close and Ian Host. This team continued to meet regularly to worship, to ensure the smooth running of church services and events, and ensure pastoral care is in place where most needed.

As a registered charity we have considered the Charity Commission's guidance on public benefit and, in particular, the specific guidance on charities for the advancement of religion. To fulfil our purpose and take steps towards achieving our vision, the activities described above have taken place.

“St. Peter’s Wellesbourne, inspired by Jesus to forgive, encourage and serve”

Administrative Information

St. Peter’s Church is situated in Church Street, Wellesbourne, Warwick, CV35 9LS. It is part of the Diocese of Coventry and the Fosse Deanery, within the Church of England. The correspondence address is The Vicarage, Church Street, Wellesbourne, Warwick, CV35 9LS.

The PCC is a body corporate (PCC Powers Measure 1956, Church Representation Rules 2017) and a registered charity with the Charity Commission (Charity Number 1143822).

PCC members who have served from 1 January 2022 until the date this report was approved are:

Ex Officio members

Incumbent	Reverend Greg Bartlem	Chairman
Associate Minister	Reverend Steve Hood (on sabbatical from May 2022)	
Assistant Curate	Reverend Barry Coleman (on placement until end of Curacy May 2022)	
Wardens	Mrs Jann Wallace	
	Mr Bob White	

Deanery Synod	Mr Richard Bacon
	Mrs Margaret Howard
	Mrs Susan Bacon (until May 2022)
	Mr Tony Norton (until February 2022)

Elected members:	Mrs Veronica Quinn
	Mr David Close
	Mr Cyril Loman
	Mrs Christine Murphy
	Mrs Fiona Unsworth
	Mr Graham Day
	Mr Jackson Towers
	Mrs Linda Mitchell
	Mrs Lynn Darby (from May 2022)
	Mrs Jan Willows (from May 2022)
	Mrs Pam White (from May 2022)
	Mr David Sampson (until May 2022)

Minutes Secretary:	Mrs Linda Dane
--------------------	----------------

Secretary:	Mrs Ros Jarrett (non-voting)
------------	------------------------------

Financial Review

The net result for the year on all funds was a surplus of receipts over payments of £44,970. On unrestricted funds this surplus was £54,477.

The surplus was due in the main to a very generous bequest of £63,581 for which we are very grateful. Without this, St Peter's would have seen an overall excess of payments over receipts of £18,611 in the year. Planned giving has increased to £64,697 (2021 £59,499) whilst other/ad hoc giving has reduced from £28,853 in 2021 to £13,587 in 2022. Gift Aid recovered has also reduced. This is due in part to a large donation in ad hoc giving in 2021 being eligible for Gift Aid. In addition, £4,451 of Gift Aid relating to 2022 donations was claimed and received in 2023.

Adding together the bank and deposit balances, the total carried forward in unrestricted funds at 31 December increased to £202,013 (2021: £147,535). Of this, £24,421 (2021: £22,560) is designated for Music, the Church Centre, and St Peter's Friends.

Fundraising was very successful in 2022. One of the highlights of the year was the busy and successful Christmas Fair held in December. This raised a record total of £1,761. The Friends of St Peter's continued to hold Saturday morning brunches throughout the year which raised a total of £1,178. Other fundraising for the year included a concert in the church in March, raising £150. The Mother's Union have a table at the back of church where they raise funds by selling produce such as cakes, marmalade and jam, and handmade cards/craft items. From these funds, they donated £350 to St Peter's in 2022 for which we are very grateful.

The church shares a boundary wall with the King's Head pub. This wall had fallen into disrepair and become dangerous so St Peter's organised its repair in 2021, and in 2022 received a donation of £3,500 towards the cost of the rebuilding.

As for many people and businesses, the increase in utility costs is of concern. St Peter's has already felt the impact with high charges coming through particularly in the last quarter of the year. Charges had been (under)estimated in part by the utility supplier. This has led to a determination to submit regular readings in 2023 and beyond to ensure accurate billing throughout the year. We now have Smart meters in place and it is hoped these will give an accurate picture each month. However, until we are sure, we will continue to take manual readings. Church insurance and utility costs rose from £6,935 to £13,240. The church centre costs increased from £5,001 to £7,605.

£77,033 was spent from the unrestricted funds to provide the Christian Ministry from St Peter's Church, including contribution to the diocesan share which largely provides the stipends and housing for clergy.

No expenses were claimed by any PCC member for attending meetings during the year (2021: £0).

The PCC does not act as custodian trustee for any other charity.

Reserves Policy

Restricted Reserves

The Carr Fund Restricted Reserve is held to cover the cost of maintaining the Carr graves in perpetuity (£10,000) with the remainder held to be used as the PCC determines. To date it has been held for fabric issues for the church and churchyard.

Other restricted reserves are set up as a result of specific criteria by the giver such that they can only be spent in a very restricted manner.

Unrestricted Reserves

Unrestricted reserves are held to cover costs that may arise that cannot be met out of annual income flows. This amount represents a minimum of the running costs for six months for the church and the church centre as currently operated (excluding the parish share which it is assumed is covered by giving). This cash buffer represents funds in the respective current and deposit accounts at a point in time.

Designated Reserves

Designated reserves are funds set up by the PCC out of unrestricted funds and can be added back into the unrestricted funds at any time. As they are wholly within the control of the PCC they are regarded as a special type of unrestricted fund.

Going Concern

The PCC has considered the issue of the charity continuing as a going concern and concluded that the charity can continue for the foreseeable future.

Approved by the PCC on 23rd April 2023 and signed on their behalf

by Reverend Greg Bartlem (PCC Chair)

Signed  G Bartk



CHARITY COMMISSION
FOR ENGLAND AND WALES

Independent examiner's report on the accounts

Section A

Independent Examiner's Report

Report to the trustees

THE PAROCHIAL CHURCH COUNCIL OF THE ECCLESIASTICAL
PARISH OF ST PETER'S CHURCH, WELLESBOURNE

On accounts for the year
ended

31 DECEMBER 2022

Charity no
(if any)

1143822

Set out on pages

12-16

I report to the trustees on my examination of the accounts of the above charity ("the Trust") for the year ended

Responsibilities and
basis of report

As the charity's trustees, you are responsible for the preparation of the accounts in accordance with the requirements of the Charities Act 2011 ("the Act").

I report in respect of my examination of the Trust's accounts carried out under section 145 of the 2011 Act and in carrying out my examination, I have followed all the applicable Directions given by the Charity Commission under section 145(5)(b) of the Act.

Independent
examiner's statement

~~The charity's gross income exceeded £250,000 and I am qualified to undertake the examination by being a qualified member of [insert name of applicable listed body]]. Delete [] if not applicable.~~

I have completed my examination. I confirm that no material matters have come to my attention in connection with the examination (other than that disclosed below*) which gives me cause to believe that in, any material respect:

- the accounting records were not kept in accordance with section 130 of the Charities Act; or
- the accounts did not accord with the accounting records; or
- the accounts did not comply with the applicable requirements concerning the form and content of accounts set out in the Charities (Accounts and Reports) Regulations 2008 other than any requirement that the accounts give a 'true and fair' view which is not a matter considered as part of an independent examination.

I have no concerns and have come across no other matters in connection with the examination to which attention should be drawn in this report in order to enable a proper understanding of the accounts to be reached.

* Please delete the words in the brackets if they do not apply.

Signed:

Mullen

Date:

20/3/2023

Name:

MALCOLM EDGE

Relevant professional
qualification(s) or body

FMAAT

IER

1

Oct 2018

St Peter's Church, Wellesbourne
Financial Statements for the year ended 31 December 2022

Receipts and Payments Account

	Note	Unrestricted Funds	Restricted Funds	Total Funds 2022	Total Funds 2021
		£	£	£	£
RECEIPTS					
Voluntary Receipts:					
Planned giving		64,697	-	64,697	59,499
Collections at Services		780	-	780	375
Bequests/one-off donation		63,581	-	63,581	23,225
All Other Giving/Voluntary Receipts	5a	10,187	3,400	13,587	28,853
Gift Aid Recovered		11,381	-	11,381	18,634
		150,626	3,400	154,026	130,586
Activities for Generating Funds	5b	30,238	-	30,238	22,881
Investment Income	5c	1,627	406	2,033	192
Church Activities	5d	6,396	3,483	9,879	11,974
Furlough income re Sessional Worker		-	-	-	851
Total Receipts		188,887	7,289	196,176	166,484
PAYMENTS					
Church Activities:					
Parish share		57,312	-	57,312	57,312
Clergy and Staffing expenses		8,460	3,610	12,070	23,323
Church Running Expenses	5e	43,799	9,308	53,107	43,170
Church Centre Running Costs	5f	14,400	-	14,400	6,190
Mission giving and Donations	5g	1,068	3,878	4,946	5,917
Costs of Generating Funds	5h	9,371	-	9,371	6,681
Total payments		134,410	16,796	151,206	142,593
Excess of Receipts/Payments		54,477	(9,507)	44,970	23,891
Cash at Bank and in Hand 1st January		147,535	51,713	199,248	175,359
Cash at Bank and in Hand 31st December		202,013	42,205	244,218	199,248

Statement of Assets and Liabilities

	Unrestricted Funds	Restricted Funds	Total Funds 2022	Total Funds 2021
	£	£	£	£
Cash Funds				
Bank Current Account General	37,228	10,918	48,146	29,679
Bank Current Account Church Centre	6,206	-	6,206	4,040
Bank Current Account Youth Services	190	-	190	1,828
CBF Deposit: Carr Fund	-	31,287	31,287	30,881
CBF Deposit: Church	142,316	-	142,316	91,050
CBF Deposit: Church Centre	15,817	-	15,817	15,612
CBF Deposit: Youth Services	6	-	6	25,958
Petty cash	200	-	200	150
Maintenance Float	50	-	50	50
	<u>202,013</u>	<u>42,205</u>	<u>244,218</u>	<u>199,248</u>
Other Monetary Assets				
Gift Aid Recoverable	<u>4,451</u>	<u>-</u>	<u>4,451</u>	<u>214</u>
		<u>-</u>		
Assets Retained for Church Use: Church Centre at cost		<u>258,881</u>	<u>258,881</u>	<u>258,881</u>
Liabilities				
Fees owed to Coventry Diocesan Board of Finance	1,152	-	1,152	738
Clergy Expenses	<u>-</u>	<u>-</u>	<u>-</u>	<u>-</u>
	<u>1,152</u>	<u>-</u>	<u>1,152</u>	<u>738</u>

Notes

1. The Financial Statements of the PCC have been prepared in accordance with the Church Accounting Regulations 2006 using the receipts and payments basis.
2. Asset retained for Church use is the Church Centre at cost basis. The Church Centre and contents are valued at £2,960,000 for insurance purposes.
3. St Peter's church and contents are valued at £12,710,000 for insurance purposes.
4. The movements in the designated and restricted funds during the year were:

Designated Funds	Bal b/fwd	Receipts	Payments	Bal c/fwd
Organ and Music Fund	2,593	535	-	3,128
St Peter's Friends Fund	4,966	1,474	147	6,293
Church Centre Reserve	15,000	-	-	15,000
	22,559	2,009	147	24,421

Fund Descriptions:

The Organ and Music Fund supports music in the church e.g. purchasing new music books for the choir and tuning the organ. It is funded by fees paid to St Peter's Singers.

St Peter's Friends is a group which raises funds for the church through various activities such as serving Saturday morning brunches to the community.

The Church Centre Reserve is set aside for major repairs and maintenance to the centre.

Restricted Funds		Bal b/fwd restated, see note 6 below	Receipts	Payments	Bal c/fwd
Community Benevolent Fund		5,009	2,850	2,108	5,751
Fabric Fund (Carr Bequest)		30,881	406	-	31,287
Youth Services Fund		6,913	538	7,451	-
Memorial Wall	5a	5,585	3,483	4,657	4,411
Foodbank		1,977	550	1,770	757
		50,365	7,827	15,986	42,206

Fund Descriptions:

The Community Benevolent Fund exists to help individuals and families in crisis through the provision of such items as white goods, furniture, clothing and petrol vouchers as a short term measure.

The Fabric Fund from the Carr Bequest is partly to cover the cost of maintaining the Carr graves in perpetuity (£10,000), with the remainder held for use as the PCC determines. To date it has been held for fabric issues for the church and churchyard.

The Youth Services Fund was set up to fund work with the children and young people of Wellesbourne. During the year, the fund helped to finance the Sessional Outreach Worker. The original fund is now depleted and any youth services costs are now borne by St Peter's church. The separate youth services bank account will be closed during 2023 and any future funding received will be administered through the main St Peter's bank account.

The Memorial Wall Fund holds monies paid in advance for inscriptions on the Memorial Wall for ashes interred in St Peter's churchyard.

The Foodbank Fund exists to help individuals and families in crisis through the provision of carefully selected emergency food supplies as a short term measure.

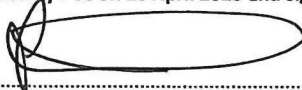
5. Further Analysis of Receipts and Payments

	Unrestricted Funds	Restricted Funds	Total Funds 2022	Total Funds 2021
	£	£	£	£
Receipts				
a) All other giving/voluntary receipts				
Donations	5,820	3,400	9,220	28,353
Bequests	63,581	-	63,581	23,225
Collections for Other Charities	867	-	867	-
Contribution received from brewery re repair to boundary wall	3,500	-	3,500	
Grants	-	-	-	500
	<u>73,768</u>	<u>3,400</u>	<u>77,168</u>	<u>52,078</u>
b) Activities for generating funds				
Church Rental Income	2,340	-	2,340	884
Church Centre Income	15,711	-	15,711	8,596
Advertising Income Wellesbourne and Walton News	5,899	-	5,899	4,903
Fundraising	3,960	-	3,960	3,332
Other Income	2,327	-	2,327	5,165
	<u>30,237</u>	<u>-</u>	<u>30,237</u>	<u>22,880</u>
c) Investment Income				
Dividends	149	-	149	107
Interest	1,478	406	1,884	86
	<u>1,627</u>	<u>406</u>	<u>2,033</u>	<u>193</u>
d) Church Activities				
Fees paid to PCC for Wedding, Funerals etc	6,396	-	6,396	9,018
Memorial Wall	-	3,483	3,483	2,956
	<u>6,396</u>	<u>3,483</u>	<u>9,879</u>	<u>11,974</u>
Payments				
e) Church running expenses				
Office expenses, telephone etc	2,095	-	2,095	2,066
Worship materials, music and organists	7,952	-	7,952	7,016
Special services and events	1,774	-	1,774	115
Church Maintenance and Repairs	10,010	-	10,010	5,623
Churchyard Maintenance	8,728	-	8,728	9,030
Utilities and Insurance	13,240	-	13,240	*6,935
Memorial Wall	-	4,657	4,657	4,723
Youth Services	-	4,650	4,650	2,662
	<u>43,799</u>	<u>9,307</u>	<u>53,106</u>	<u>38,170</u>


*The total shown here for 2021 was £11,936 for church and church centre costs combined. These costs have now been split out to show separate amounts for each building. Notes 5e) and 5f) reflect the split for both the 2021 and 2022 costs.

	Unrestricted Funds	Restricted Funds	Total Funds 2022	Total Funds 2021
	£	£	£	£
f) Church Centre Running Costs				
Maintenance and Administration	1,283	-	1,283	2,878
Utilities and insurance	7,605	-	7,605	*5,001
Cleaning	5,512	-	5,512	3,312
	14,400	-	14,400	11,191
The total shown here for 2021 was £0. The costs have now been split out to show separate amounts for each building. Notes 5e) and 5f) now reflect the split for both the 2021 and 2022 costs.				
g) Mission Giving and Donations				
Payments to Mission Partners	-	-	-	2,400
Payments to Other Charities and Mission	1,068	3,878	4,946	3,517
	1,068	3,878	4,946	5,917
h) Costs of Generating Funds				
Church Rental Costs	250	-	250	135
Fundraising Costs	18	-	18	80
Printing Costs - Wellesbourne and Walton News	9,103	-	9,103	6,466
	9,371	-	9,371	6,681

Approved by PCC on 23 April 2023 and signed by:

 G. Bartlem

Revd Greg Bartlem, Chair PCC



J A Wallace, Treasurer



R White, Church Warden