

woman's Trust

recovery from domestic abuse

Annual Report and Financial Statements

31st March 2025

Charity Registration Number 1143513

Company Registration Number 06886781 (England and Wales)

Contents

Chair and CEO's Foreword	3
Trustee Report	4
Governance and Administrative Information	16
Independent Auditor's Report	24
 Financial statements	
Statement of Financial Activities	28
Balance Sheet	29
Statement of Cash Flow	30
Principal Accounting Policies	31
Notes to the Financial Statements	33

The Trustees present their statutory report together with the financial statements of Woman's Trust for the year ended 31 March 2025.

This report has been prepared in accordance with Part 8 of the Charities Act 2011 and constitutes a directors' report for the purposes of company legislation.

Woman's Trust is constituted as a charity registered for charitable purposes with the Charity Commission (Charity Registration Number 1143513) and a company limited by guarantee (Company Registration Number 06886781).

Chair & CEO's Foreword

This year, women and children have continued to face worsening abuse and mental health, in the context of social and economic challenges that disproportionately affected them. With 1 in 2 women seeking mental health support due to domestic abuse (RCP, 2024), 9 out of 10 women continue to report counselling and mental health support as their priority needs (DAC, 2022) and domestic-related suicides overtook homicides for another year (NPCC, 2025).

Woman's Trust **faced increasing demand for our services**, whilst costs increased at a faster rate than funding. For the third year now, we were only able to provide direct therapeutic support to just over half of those contacting us. Without our support, women are left with nowhere to turn to, as the NHS Mental Health Services reported a million people on waiting lists this year and London's statutory services including social care and housing were also overwhelmed.

Woman's Trust **launched its report "Living without Hope"** in March 2025 making the case for improving the mental health response for survivors of domestic abuse. It amplified our call for action to prioritise the devastating impact of domestic abuse on women's and girls. We wrote an open letter to ministers, together with 100 charities, calling for domestic abuse to be made a priority by the new Government, for both the new National Health Service and Violence Against Women and Girls (VAWG) Strategies planned for launch in 2025.

In line with our Strategy, we continued to **develop innovative services and partnerships** across the whole system. We worked together with our committed and passionate funders, both existing and new, as well as statutory agencies, to provide high-quality trauma-informed services across London to more women than ever. We built on our partnerships with other specialist 'by and for' women's charities, as a member of Women's Aid Federation of England & Wales and the London VAWG Consortium, to reach those facing multiple disadvantages and diverse groups including young women and girls, and black and minoritised communities.

We are privileged to work with **passionate, committed and expert staff**, both our counsellors and front-line colleagues, as well as the wider Woman's Trust team. We recognised the impact these challenging times have had on them and continued to focus on providing a positive supportive environment, ensuring training and development, a work-life balance and flexible working.

As we enter the fourth year of our strategy, we continue to centre our work on women's and children's needs and to amplify their voices. We cannot do this without the continued support of our supporters, funders, partners and colleagues; we thank you.

Niki Scordi, Chair

Heidi Riedel, Chief Executive Officer

Trustee Report

Our Vision, Mission and Approach

Our vision is a world where women and children have the resources to prevent domestic abuse damaging their futures.

Our mission is to help women and children affected by domestic abuse to overcome the mental and emotional harm and rebuild their life, by providing women-only, client-led counselling and mental health support services.

Woman's Trust's charitable object is to relieve women and children who are being, or have been, affected by domestic abuse, through the provision of a counselling and support service.

Woman's Trust is the leading specialist service provider of pioneering, free and confidential mental health responses for survivors of domestic abuse:

- ◆ We offer **specialist 'person-centred' counselling and therapeutic services**, informed by an understanding of the long-term mental health and emotional impacts of domestic abuse
- ◆ Through a **trauma-informed approach**, we enable women to make their own choices and decisions, in their own way, in overcoming the risk and damage caused by domestic abuse, and
- ◆ We are **expert in understanding the dynamics** of domestic abuse and its devastating and often long-lasting effects on women's lives and that of their children, providing accessible intersectional services regardless of race, religion, class, or culture.

Woman's Trust is a women-only organisation, rooted in the lived experiences of the women and the communities we serve.

We provide a safe environment for women to talk about their experiences openly and without fear of being judged, to process their thoughts; and to understand, express and learn to manage their feelings and reactions with the help of our specially trained therapists. We work with women at our dedicated Women's Centre in central London, regional hubs and online, to meet women where they are at.

Our services are accredited by the British Association for Counselling and Psychotherapy (BACP) Ethical Framework for the Counselling Professions (2018). We follow the National Quality Standard of Community Services by Women's Aid Federation for England & Wales.

We work in a whole system approach to raise awareness and improve understanding of the impact of domestic abuse and VAWG on women's and girls' mental health, aiming to deliver systems change and improve outcomes for survivors.

- We engage with voluntary and statutory sector partners, **working in partnership to develop frameworks and responses** to meet the needs of women and girls. We are part of the award-winning Angelou Partnership, the London VAWG Consortium, and Whole Housing Approach Partnership, partnering with over 30 specialist charities.
- We provide **awareness raising workshops and training for professionals and front-line workers**, both voluntary and statutory partners, on mental health, suicidal ideation and improving responses and mental health outcomes for women and girl- survivors of DA.
- We carry out **research and share practice-based evidence**, based on our almost 30 years of expertise, amplifying women experts by lived experience voices, sharing our best-practice approaches and publishing briefings to influence commissioners and policymakers across local and national government level.

Impact at a glance

1289 women referred to our services

833 women offered therapeutic support 605 women received triage advice and signposting support

Engagement in our services

503 women received **Counselling** 144 received **Therapeutic Support Groups**
 127 women attended **Workshops** 41 attended **Peer-led Support Groups***
 7 young women received counselling* 34 young women attended workshops

** New services launched*

Outcomes of our services

Counselling	Therapeutic Support Groups	Self-development workshops
63% reduced suicidal thoughts and ideation	87% felt less isolated	84% feeling better equipped to cope
60% reduced self-harm	100% improved confidence	94% improved self-esteem
89% reduced feelings of anxiety and stress	89% reduced feelings of anxiety and stress	94% improved inter-personal interactions
86% had more control of their future	86% had more control of their future	

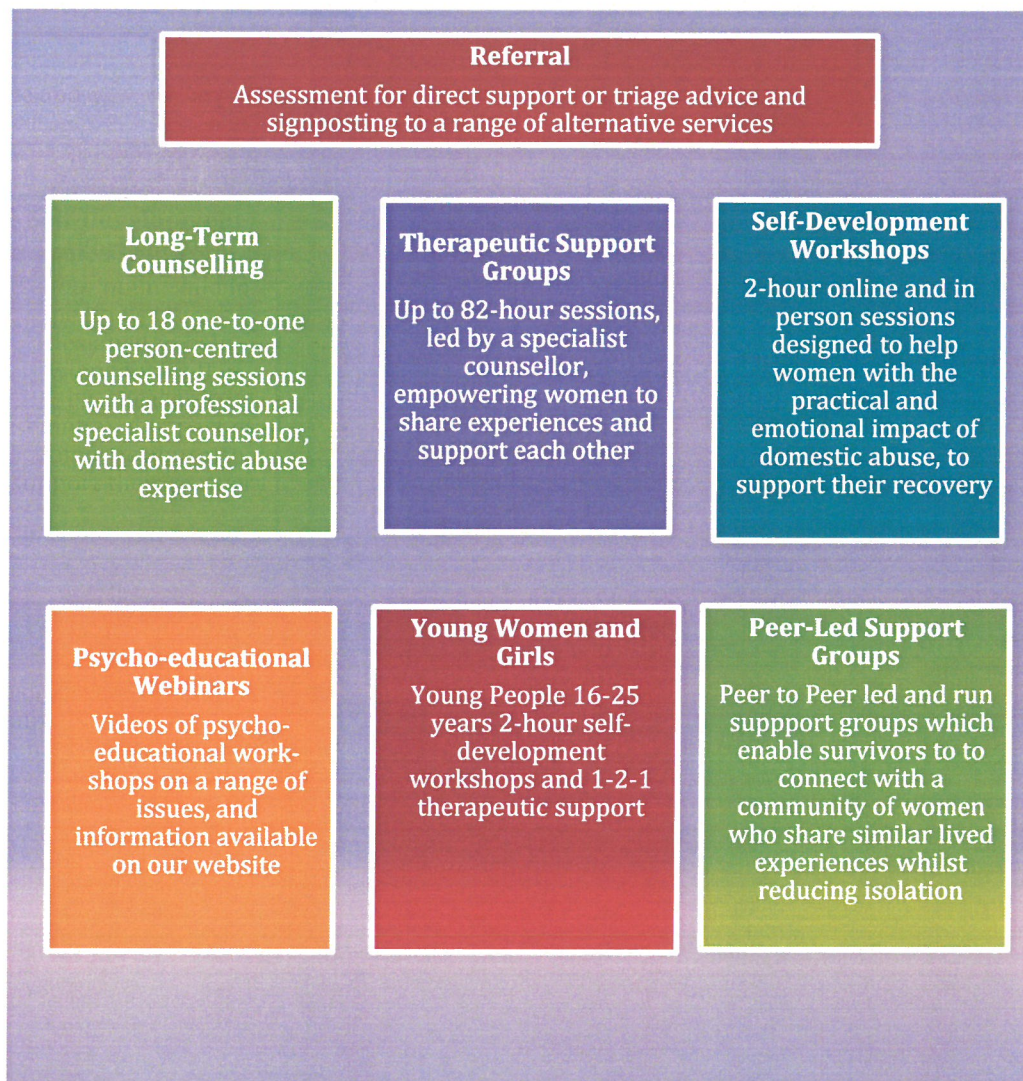
Our counselling and support services

Domestic abuse has affected or will affect one in four women in the UK. The psychological and emotional consequences of abuse, if left unaddressed, can last a lifetime for the woman and her children. Our services enable women to recover from domestic abuse and rebuild their lives.

We aim to tackle the emotional and psychological damage caused by abuse, by providing mental health services to women and their children, including

- specialist person-centred trauma-informed one-to-one counselling,
- therapeutic support groups (both BACP accredited services),
- educational and self-development workshops,
- webinar resources for anyone experiencing domestic abuse and
- help women with small grants from a hardship fund, where possible.

A Woman's Service Journey



Women access our services directly or through a referral from diverse pathways, including statutory and voluntary partners, such as the NHS and other health agencies, the police, social care and other VAWG and mental health charities.

Women can choose to access one or more services simultaneously or one after the other, as each woman's journey is tailored to her needs.

"I believe Woman's Trust should be supported because of the amazing work they do. Woman's Trust have been very supportive throughout my time there and from the very first day I felt comfortable, supported and always felt at ease. I was provided a safe space and always looked forward to my next session as I had noticed a difference in my confidence and felt I had more control over my life. I was given information of other services I could access which I found very useful.

I am now able to put things in place to keep me safe and look forward to the future. Every session I had with my counsellor left me feeling positive and hopeful for the future. Staff are always so friendly and welcoming, and Woman's Trust have impacted my life in such a positive way, I cannot thank them enough and I will forever be grateful for them."

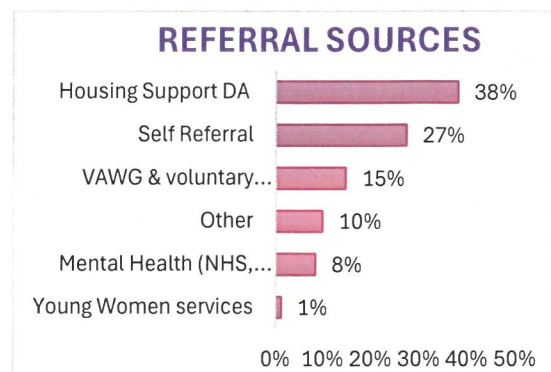
Woman supported, August 2024

Our reach: referred to and engaged with our services

Throughout the year 2024/25, Woman's Trust **received 1289 referrals** (1596 in 2023/24) from a variety of sources, **with 833 women offered direct therapeutic services** (917 in 2023/24). In addition, 605 women were provided with triage support and sign posted to alternative non-specialist services for further support, as unfortunately we were already at capacity and once again, need exceeded resources.

Our main rereferrals continue to be

- 38% from our partnerships with London Whole Housing (LWHSP) and Floating Support (PLFSS) programs, a 13% increase from 23/24
- self-referrals directly from women survivors (27%) who reach out to us, and
- referrals from VAWG organisations (15%) through our networks and partnerships.

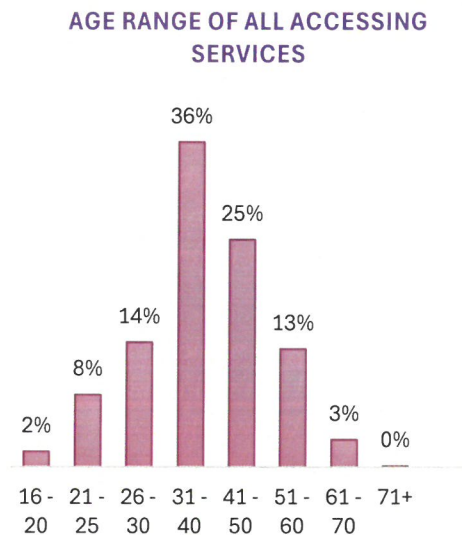


At Woman's Trust, 53% of women and girls who accessed and engaged with counselling, support groups, and workshops came from global majority (including Black, African, Asian, dual-heritage and racialised) groups, compared to 47% of London's demographic profile (Census, 2021).

Our services are offered to girls and women aged 16 years old and above.

Women aged 31 to 50 represent 61% of those engaged with our services, although demand for services to girls and young women is increasing.

Young women and girls from 16 years old to 24 years old, which now represent 10% of all clients. Since the launch of the specialist service to 16 to 25 years old, in partnership with London's Violence Reduction Unit (the Maia & LIFT Partnership) in 2022, we have been delivering one to one therapeutic counselling and awareness and self-development workshops across 6 London boroughs.



Services provided

Our goal is to offer a variety of services tailored to address the diverse needs of our clients and aid them in overcoming the trauma of domestic abuse.

Service	No of Women	% of Women
Triage advice support	463	35%
Counselling incl young women	510	39%
Therapeutic Support Groups	144	11%
Peer led Support Group	41	4%
Workshops	157	12%
All Services FY 2024- 2025 (non-unique women)	1315	100%
All Services FY2024-25 (Unique women) *	833*	

* a unique woman is counted once irrespective of the number of services she attends

A total of **833 women and girls were provided at least one of our services** and 60% (510 24/25, compared to 496 23/24) engaged with individual counselling sessions, with some women accessing multiple services.

Of the women accessing our services, 503 women engaged with one-to-one counselling and attended 75% of all sessions offered (4391 of total 5826 sessions).

We continue to offer an increasing amount of face-to-face counselling to women, in addition to online, to improve access and reach women where they are in the way that they want. Woman's Trust has remained a crucial support for many.

Our group sessions, including therapeutic support groups had a total of 198 sessions, consisting of 28 provided group blocks, each lasting 8 week, and psycho-educational workshops (comprising 89 sessions), were successfully continued both online and face-to-face.

"As an international person living in the UK for the first time, I was going through a challenging period and didn't know where to seek help. That's when I was referred to Woman's Trust, and they were there for me, providing much-needed counselling during that difficult time. Their support was a lifeline, and I am truly grateful for the help they gave me. The work of Woman's Trust should be supported because they offer crucial emotional and psychological assistance to women in need, especially for those who may not know where to turn during tough times. Their impact is significant and makes a real difference in the lives of many."

Woman supported, February 2025

Impact: Our Outcomes

1. Counselling service

A total of 510 received direct counselling support, with 5826 total counselling sessions delivered in the FY 2024/25 of which 75% (4391) were attended.

Women engaging with counselling services reported an improvement in their mental health and well-being, and reduction in suicidal ideation, as well as more able to make life choices and have better relationships and connections.

We ensure the effectiveness and impact of our services on women's lives, through the use of the Clinical Outcomes in Routine Evaluation (CORE) for counselling and entry and exit questionnaires (EQ) for all our services.

Women told us that our support helped with their recovery from domestic abuse and improved their mental health:

- 89% reduced feeling stress and anxiety
- 63% reduced suicidal thoughts and ideation
- 60% reduced self-harm
- 93% improved their self esteem
- 85% were more confident
- 86% had more control of their future

woman's Trust

recovery from domestic abuse

- 89% had better understanding of their rights
- 91% had knowledge of how to access services for support
- 85% had improved their interpersonal and family relationships
- 84% had improved their relationships with their children, of those with children

"I was not alone in the worst period of my life and also it helped me deal with trauma from abusive relationship. It is a safe space, nurturing and understanding, and judgment free. I felt I am talking to a friend or a cousin and the energy that I was getting was warm and gentle.

My therapist was always looking after my interests even if I was harsh to myself, she would gently correct my words and encourage me to talk kindly to myself. I felt connected and in 'safe' hands."

Woman supported, June 2024

"I was very fortunate to start Woman's Trust counselling sessions at a critical time in exiting a long-term toxic relationship. I had struggled on and off to get the support I needed through private insurance and the NHS. But there were always many parameters and long wait times. It was very hard to get the continued help I desperately needed. I was on the verge of giving up on therapy because it felt too hard and complicated to secure. My mental health would have greatly suffered during an already vulnerable time in my life.

When I was offered 18 sessions through Woman's Trust, it truly felt like a godsend. And though I'd been lucky enough to have some therapy before, it's hard to find a therapist that fully understands the dynamics of these types of relationships. Having support to get out of an unhealthy relationship is vital to the survival of many women - and largely overlooked because often coercive control is so invisible. It takes a very specific kind of expertise to empower women to break this vicious cycle.

Many women in my situation have lost a great deal of confidence and don't know where to start. Without the work of charities like Woman's Trust, I believe that we would remain stuck, powerless and hopeless. Another huge reason, in particular for myself is that the sessions are offered for free and for a significant length of time. I myself was not in a position to be able to pay for expensive therapy sessions, even though my mental health was suffering immensely.

18 sessions is a wonderful span of time to truly make progress and for the sessions to have a concrete impact on your life."

Woman supported, June 2024

2. Therapeutic Support Groups

Our specialist and trained counsellors facilitated a total of 28 Therapeutic Support Groups, with each group comprising 8 sessions. For support group programmes ending in FY2024/25, these garnered a significant attendance of 910 attendances, with 118 unique women benefiting from the service (881 attendances, 107 unique women benefiting in FY2023/24).

The impact of the Therapeutic Support Groups was overwhelmingly positive, as women reported:

- 87% felt less isolated.
- 100% of participants reported an improvement in their confidence.
- 93% experienced a reduction in stress and anxiety levels.
- 100% felt a greater sense of control over their future.
- 93% reported improved ability to participate in group discussions.
- 80% indicated an enhanced understanding of their rights.

"Listening to other group members' perspectives provides a different angle and helps me better understand certain situations. The reassurance and feeling supported by the group, and also being understood, is so uplifting. The therapist has a lovely way of helping us explore an alternative way of thinking, making me feel more confident in myself."

Woman supported, June 2024

Excellent service and I can't recommend this enough. It's a lifeline to some and this needs to be noted."

Woman supported, June 2024

"The lead of the meeting was always very understanding and created a safe place for all of us to be able to open up. I am grateful to have been given the opportunity to attend and open up about my own experience, which is heavy to carry, and that was only possible thanks to the caring nature of the support group and lead."

Woman supported, March 2025

3. Self-development workshops

Our Self-development Workshops were accessed by 102 women, with 74 workshop sessions attended and a total of 396 attendances.

Our workshops included:

- Workshops for young women aged 16 to 25 experiencing domestic abuse and additional needs including care leavers, school exclusions and at risk of exploitation and offending, as part of the Maia programme in partnership with Advance and funded by London's Violence Reduction Unit,
- Workshops aimed at supporting women and their children with housing needs in refuges and the community, part of the GLA-funded Floating Support (PLFSS) programme in partnership with the London VAWG Consortium and Refuge,
- Workshops focused on empowering women with knowledge and awareness of the effects that domestic abuse may be having on them and others, and helping to rebuild their self-esteem and confidence in a safe, supportive environment amongst peers, funded by City Women Network and the RBKC Serious Violence Unit,
- Thrive Futures Theatre workshops- partnership project aimed at providing a space for women to express themselves by connecting with other women through creative activities, and for them to rediscover and explore skills and talents.

Women, including the young women we supported reported overwhelmingly positive outcomes and impact of the workshops:

- 94% of the women experienced an improvement in their self-esteem.
- 94% reported improved interpersonal interactions.
- 94% felt an increase in their overall confidence.
- 90% increased willingness to take positive steps towards changing their lives.
- 84% felt better equipped to cope with their experiences of domestic abuse.
- 84% felt workshops improved their skillset.

The outcomes and women's feedback demonstrate the effectiveness of our Self-Development Workshops in empowering women, enhancing their well-being, and enabling them to overcome the challenges associated with domestic abuse.

"Whilst most of the patterns mentioned in the workshop were things I've already had information on, something was mentioned in the workshop that made me realise that there were behaviours from an even more recent relationship that were red flags, even though I did not recognise this relationship as "toxic" or "abusive". I thought it was a healthy behaviour, and I've learnt that it was, instead, a red flag. And that I have so much to learn and to heal."

Woman supported, October 2024

woman's Trust

recovery from domestic abuse

"My experience of the workshops has been overwhelmingly positive. I feel much more aware of the impact of domestic abuse on my mental health and my life and can take more steps to self-care. I feel a lot more self-awareness around resources and support and feel I will be able to take steps to freedom."

Woman supported, June 2024

"To be honest I was amazed by the content, information, guidance and general help and support. [The groupworker] has completely changed the way I think and given me clarity and confidence moving forward. The way I would describe how much I've learned from the workshop is a series of many lightbulb moments that have given me a greater understanding of domestic abuse, Childhood experiences and the relationships I have had in my life and so therefore have now a newfound confidence to change these negative things in my life. Many thanks to the [groupworkers]."

Woman supported, March 2025

"The parts of the workshop that were the most useful were the reflective exercises, analysing the topic for that week and vocally participating because, this is something I can now do in my day-to-day life, and it really does help me to put things into a visual perspective and help to boost my issues with self-confidence. Plus, the lesson on domestic violence indirectly gave me the answers to the questions that I was desperate to know which has given me peace of mind and that was exactly what I was hoping to receive out of these workshops."

Woman supported – March 2025

Raising awareness in a whole system approach

We work in a whole system approach to raise awareness and improve understanding of the impact of domestic abuse and VAWG on women's and girls' mental health, aiming to deliver systems change and improve outcomes for survivors.

This year, we stepped up our campaigning and stakeholder engagement work significantly.

We mapped the people, organisations and influencers we have, and need to develop relationships with, to deliver systemic change on behalf of the women we support. This includes commissioners and policy makers, to raise awareness of the impact of domestic abuse on mental health and ensure more women can get the support they need.

Engagement during this period was predominantly with contacts within local authorities, the Greater London Authority (GLA), including the Mayor's Office for Policing and Crime (MOPAC), the Domestic Abuse Commissioner's office and the London Victims' Commissioner.

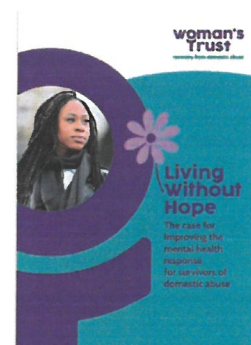
In March, we published our first major report, **"Living without Hope"**.

The report consolidates existing and increasing academic, government and sector research that demonstrates the significant impact of domestic abuse on women's mental health and wellness.

It the current response within agencies at national, regional and local level and the gaps in provision, The report also makes recommendations for change and improvement across the health and VAWG sectors.

The launch event at the Fishmonger's Hall was well-attended by VAWG, health and mental health professionals. With a keynote message from Baroness Merron, Minister for Mental Health and Women's Health, there was consensus and support for our calls to improve the current systems and provision for survivors.

The full report is available on our website
<https://womanstrust.org.uk/wp-content/uploads/2025/03/Living-without-hope-Full-Report-March-2025.pdf>



The publication also marked **the start of a national campaign to raise awareness and secure funding** for a significant increase in long-term, specialist and trauma-informed therapy for women across the country.

Through our media and social media activity we have continued raising awareness of the signs and impact of domestic abuse on mental health and the value of specialist, trauma-informed counselling on survivors' recovery. This included print and broadcast coverage highlighting the real-life impact of domestic abuse on women's psychological wellbeing; as well as a partnership with the Metro newspaper as part of a year-long campaign highlighting the incidents of and work to prevent and address violence against women and girls in the UK.

Our support for tens of thousands of women over nearly thirty years of operation has consistently demonstrated that the women who come to us often have multiple, competing demands.

Similarly, specialist support to address the mental health trauma caused by abuse remains a crucial part of women, young women and girls' journey to recovery. This is why we continue to work within the vawg sector as part of a wider, whole system approach, in conjunction with peer charities that offer different support, such as housing, legal, within the criminal justice system or reflective of different ethnic backgrounds, for example.

And within these partnerships and collaborations we continue to provide information, training and raise awareness on the impact of DA on mental health and the difference that trauma-informed, specialist therapy makes. The Angelou Partnership, the London VAWG Consortium and as members of the Women's Aid Federation.

Governance and Administrative Information

Governance, Structure and Management

Trustees

(at date of approval of financial statements, except where noted)

Administrative Information

Niki Scordi	Chair	Charity Registration number 1143513 Company Registration Number 06886781 (England & Wales) Incorporation, Memorandum and Articles of Association 24 April 2009 Registered office West End House 37 Chapel Street London NW1 5DP
Debbie Hartley		
Laura McCarthy	Chair - Ethics, Practice & Safeguarding Committee	
Linda McHugh	Chair - Finance, Operations & People Committee	
Maya Rodriguez	Treasurer	
Nicola Peers	Chair - Fundraising & Communications Committee	
Althea Cribb	Appointed 2 February 2025	
Deborah Freeman	Appointed 16 May 2024	
Elizabeth Muir	Appointed 21 July 2025	
Florence Acquah	Appointed 21 July 2025	
Jazz Rehal	Appointed 2 February 2025	
Rebecca Williams	Appointed 2 February 2025	
Shivangi Mehdi	Appointed 19 May 2025	
Vyara Stoycheva	Appointed 22 July 2024	
Anthonia Ifeanyi-Okoro	Resigned 29 April 2025	
Helen Smith	Resigned 4 November 2024	
Joanne Baker	Resigned 16 May 2024	
Nadia Mahmud	Resigned 9 April 2025	
Heidi Riedel	Chief Executive Officer	
Bankers	Auditors	
CAF Bank Limited	R E Jones & Co	
25 Kings Hill Avenue	132, Burnt Ash Road	
Kings Hill	Lee	
West Malling	London SE12 8PU	
Kent ME19 4AT		

Organisational Structure

Woman's Trust's ultimate decision-making body is its Trustees, working collectively as a Board. The Trustees are the Directors of the company.

Day-to-day management of Woman's Trust is delegated to an employed Chief Executive Officer, who in turn is responsible for delegating work to staff and volunteers.

Woman's Trust maintains a small core staff, recruited for specific skills and experience. All our staff are women, dedicated to the ethos of Woman's Trust and determined to provide women in London with the service they so desperately need.

Woman's Trust Counsellors are a mixture of fully-qualified employed counsellors and volunteer counsellors, some of whom are still undertaking their training.

Trustee Recruitment, Induction and Training

The Board conducts a periodic skills audit. Board vacancies are advertised according to identified gaps. Candidates are interviewed by the Chair and at least one other Board member and once shortlisted, invited to observe at least one Board meeting before appointment by the Board.

On appointment, each Trustee is given information about Woman's Trust services, and an induction to the work of the service and key organisational aspects, including meeting with members of staff who introduce the work to them. The charity provides opportunities for Trustees to attend internal specialised domestic abuse training and external training, including governance and charity finance.

Risk Management

The Trustees have assessed the major risks to which the charity is exposed in-line with the risk management policy. The Trustees and Chief Executive Officer undertake regular risk assessments, including an annual risk analysis which forms part of the charity's strategic planning process and the individual risk assessments of proposed new projects or developments. Quarterly Board meetings receive reports from the three Committees on any additional risks and, where major risks are identified, the Trustees will take the appropriate action to ensure that these are mitigated. Major risks and mitigation responses are identified below.

Risk Identified

Mitigation response

Trust and foundation income opportunities have reduced since our turnover

- ◆ We have increased investment in fundraising to focus on statutory, corporate and individual giving funding streams so we can plan longer-term;

increased to over £1m per year.

Competition for funding has increased as other funding sources such as statutory have decreased.

The loss of key staff, who would be difficult to replace, or replace quickly.

Increasing difficulty in recruiting staff and the high cost of living in London

Insufficient qualified counsellors to deliver a safe service

- ◆ We closely monitor the bidding process timetables, so bids to renew funds or obtain new funding are made well in advance;
- ◆ We build our annual budget based on secured funding and the identified funding gap which becomes our fundraising target for the year; and
- ◆ We maintain contingency plans to make any necessary service changes, in addition to increasing unrestricted reserves and fundraising for core costs.
- ◆ We have introduced longer notice periods for key positions and ensure there are related roles that are able to provide cover during absences and vacancies.
- ◆ We adapted the staffing levels, increasing hours for more experienced staff, and reshaping responsibilities to make best use of the staff and volunteers we have available.
- ◆ We have documented systems, job descriptions and responsibilities, meetings and plans to ensure staff and volunteers can access the knowledge they would need to undertake new tasks.
- ◆ We have reviewed salary scales and increased pay levels where possible to be more competitive in the market.
- ◆ We have reduced our dependence on volunteer counsellors by recruiting more directly employed counsellors.
- ◆ We continue to use some volunteer placement counsellors who may become a pool of potential employed counsellors, to ensure we respond to changes in demand and need.

Financial Activities Overview

Woman's Trust received £1,060,767 in total income in the year to March 2025. Unrestricted income of £363,798 made up to a third of Woman's Trust total income. Of that sum, unrestricted donations and gifts were £157,417. Restricted income totalled £696,969.

In the year to March 2025, expenditure was £1,068,762 decreased by 1.5% compared to the previous year. Service provision costs increased by over £10,000. The labour market tightened further in the year, and it was necessary to use specialist agencies and some sessional staff during the year, increasing staffing expenditure.

The cash position at the end of the year was £476,580, similar to last year (£479,431). Restricted funds carried forward were £27,436, reflecting the fact that project funding

is rarely aligned with financial years. The unrestricted funds stood at £501,506 at the end of the year, and this similarly includes designated funds of £80,000 set aside to cover core and project. This leaves reserves funds of £421,506 an increase of £43,304 over last year.

Reserves Policy

The Trustees review the Reserves Policy annually and the calculation of the required level of reserves is an integral part of the organisation's planning and budgeting. It takes account of the risks associated with each stream of income and expenditure being different from that budgeted, the organisation's commitments and the planned activity level.

The reserves policy requires free reserves (i.e., unrestricted funds excluding designated and Assets) to be maintained at a level which ensures that the organisation's core activity could continue during a period of unforeseen difficulty such as:

- ◆ a funding gap, possibly whilst waiting for the result of an application;
- ◆ funding short term deficits in a cash budget, when paid in arrears;
- ◆ covering unforeseen day-to-day operational costs, such as paying temporary staff in the absence of permanent staff;
- ◆ covering unforeseen emergency costs.

The Trustees believe that it is prudent for the financial reserve to be at least three months' running costs to meet the above obligations. Our medium-term objective is to move to a 6 months' reserve policy. We increased our reserves excluding designated funds in 2024/25 to £421,506 (2023/2024: £378,202) in line with our increased core costs, and plan to maintain this level in 2025/26.

Going concern

The investment we made in partnership working produced several new strands of multi-year statutory funding. In addition, we have secured several other multi-year funding grants and donations from trusts and foundations, corporate funders and donations. Our current position is sufficiently secure, supported by reserves, to give assurance that Woman's Trust remains a going concern for the following reasons:

- ◆ budget and cash flow forecasts prepared show that Woman's Trust has sufficient funds to meet its obligations for the next nine months and we have a fundraising plan, and fundraising resource, in place to raise funding beyond that time; and
- ◆ management information systems enable timely decision making.

Fundraising Overview

Woman's Trust complies with the Fundraising Code of Practice and is registered with the Fundraising Regulator. Woman's Trust does not use any professional fundraiser or commercial participator to raise funds on our behalf. No complaints have been received about our fundraising activities.

Most of our fundraising activity is applications to charitable trusts and foundations, and to statutory funders such as the NHS, Local Authorities and central government.

We plan to increase our income from donations by community fundraising and building relationships with corporate and individual donors. Donations received as a result of active fundraising are dedicated to the purpose for which they were raised for.

We want to thank our funders and donors for their continued support, including:

The Blue Thread	Society of the Holy Child Jesus
Bruno Schroeder Trust	Souter Charitable Trust
Charles Hayward Foundation	Strand Parshes Trust
Charles S French	Tara Getty Foundation
The Childwick Trust	Wakefield & Tetley Trust
City Bridge Foundation	The Worship Company of Cutlers
Dr. Edwards Bishop King's Fulham Charity	West Hackney Parochial Trust
Dudley & Geoffrey Cox Trust	Westminster Amalgamated Charity
East End Community Foundation	Westminster Almshouses Foundation
The Fishmongers Company	Westminster Community Priorities Programme
Garfield Weston Foundation	
Hammersmith & Fulham Council	Zurich Community Trust
Hammersmith United Charity	Greater London Authority
The Henry Smith Charity	London Councils
Hyde Park Place Estate Charity	London Violence Reduction Unit
Kusuma Trust	MOPAC
London Freemasons' Charity	NHS North-West London ICB
Merchant Taylors' Foundation	RBKC Community Safety
Pathways Housing	

Future Plans and Strategy 2022 to 2027

We have concluded the third year of our 5-year strategy and have delivered in-line with our strategic aims of:

- Offering high quality and effective counselling and mental health services to women and children survivors of domestic abuse
- Sustaining existing funds and growing our income to expand our offer to meet the increasing number and needs of women and their children
- Raising awareness about Woman's Trust work and influencing the debate about domestic abuse and mental health in London and nationally
- Ensure that we have the staff with the right skills, in the right place, at the right time

Our medium-term goals for the next two years remain:

- ◆ To continue to deliver high quality trauma-informed mental health services and play a significant role in the London-wide provision and improvement of specialist services offered to women affected by domestic abuse;
- ◆ To ensure we increase capacity of services to respond to the unmet demand for counselling and therapeutic support;
- ◆ Recognising that domestic abuse is part of a larger picture which includes the impact on children and mothers, young women and girls, and the criminal justice system response, use our expertise to support integrated approaches to these;
- ◆ To produce reports, based on evidence and research, on key findings such as: suicide and self-harm, mental health, the criminal justice system and mental health, and young people and mental health and our interventions to influence commissioning and delivery, as well as policy makers and government at London and National level and improve mental health and social justice outcomes;
- ◆ To continue to build partnerships with voluntary, statutory and organisations to influence on key strategies and action plans on the Mental Health of Women and Girls Survivors of DA;
- ◆ To ensure the organisation is on a robust and sustainable footing, by continuing our fundraising effectiveness and maintaining our reserves in-line with our reserves policy.

Public Benefit Statement

Trustees have referred to the Charity Commission's general guidance on public benefit in reviewing the aims and objectives of the charity, in planning future activities and, in particular, how planned activities will contribute to those aims and objectives.

Woman's Trust's charitable objects are to relieve women and children who are or have been affected by domestic abuse, by providing counselling and support services.

Woman's Trust's services have the following benefits:

- ◆ Improving the mental health of women affected by domestic violence, reducing the likelihood that they will suffer from depression, post-traumatic stress syndrome, suicidal ideation, or any of the other mental health conditions associated with domestic abuse;
- ◆ Empowering women affected by domestic violence to function better and to make better choices, enabling them to live fuller lives through, for example, better relationships with other family members and people outside the home, improved ability to work, to control their own finances and to take an active role in society;
- ◆ Contributing towards the safety and emotional health of children whose families are affected by domestic violence;
- ◆ Enabling women in abusive relationships to build their knowledge of support services, social networks and personal strength so that they can mitigate risk, plan for a safer future, and understand what services are available to them.

These benefits relate directly or indirectly to several charitable purposes including the advancement of health (primarily mental health), the advancement of human rights and citizenship, the relief of poverty and of those in need. In extreme cases, this can extend to saving lives as women are empowered to overcome the danger and damage caused by domestic violence.

Woman's Trust's services are sex-based and offered to women and children who are or have been affected by domestic abuse but are not otherwise restricted in principle. In practice, there are certain restrictions:

- ◆ where our funding is restricted to particular local authority or other geographical areas, beneficiaries must come from those areas. This restriction varies from time to time as funders change;
- ◆ counselling is available only in certain languages;
- ◆ the needs of people with childcare (or other caring) responsibilities cannot always be met.

Woman's Trust seeks to overcome these restrictions where funding is available. All services are currently free to users and there is no exclusion due to simple inability to pay.

All private benefits – to our staff, suppliers and volunteers – contribute directly to achieving Woman's Trust's aims.

For these reasons, the Trustees are confident that Woman's Trust meets the public benefit requirements for charities.

Statement of Trustees' Responsibilities

Company Law requires the Trustees prepare financial statements for each financial year which give a true and fair view of the state of affairs of the charitable company and of the income and expenditure of the charitable company for that period.

In preparing these financial statements, the Trustees are required to:

- ◆ Select suitable accounting policies and then apply them consistently;
- ◆ Observe the methods and principles in Accounting and Reporting by Charities: Statement of Recommended Practice applicable to charities preparing their accounts in accordance with the Financial Reporting Standard applicable to the United Kingdom and Republic of Ireland (FRS 102);
- ◆ Make judgements and estimates that are reasonable and prudent;
- ◆ State whether applicable United Kingdom Accounting Standards have been followed, subject to any material departures disclosed and explained in the financial statements; and
- ◆ Prepare the financial statements on a going concern basis unless it is inappropriate to presume that the charitable company will continue in operation.

The Trustees are responsible for keeping proper accounting records that disclose with reasonable accuracy at any time the financial position of the charitable company and enable them to ensure that the financial statements comply with the Companies Act 2006. They are also responsible for safeguarding the assets of the charitable company and hence for taking reasonable steps for the prevention and detection of fraud and other irregularities.

The Trustees are responsible for the maintenance and integrity of the corporate and financial information included on the charitable company's website. Legislation in the United Kingdom governing the preparation and dissemination of financial statements may differ from legislation in other jurisdictions.

The above report has been prepared in accordance with the special provisions of Part 15 of the Companies Act 2006 relating to small companies.

Signed on behalf of the Trustees:



Niki Scordi, Chair

Approved by the Trustees on 26 January 2026

**Independent Auditors' Report to the Trustees of
Woman's Trust
For the year ended 31 March 2025**

Opinion

We have audited the financial statements of Woman's Trust (the 'charitable company') for the year ended 31 March 2025, which comprise the Statement of Financial Activities, Balance Sheet, Statement of Cash Flows, and Notes to the Financial Statements, including a summary of significant accounting policies. The financial reporting framework that has been applied in their preparation is United Kingdom Accounting Standards, comprising Charities SORP - FRS 102 'The Financial Reporting Standard applicable in the UK and Republic of Ireland' and applicable law (United Kingdom Generally Accepted Accounting Practice).

In our opinion the financial statements:

- give a true and fair view of the state of the charity's affairs as at 30 September 2024 and of its results for the year then ended;
- have been properly prepared in accordance with United Kingdom Generally Accepted Accounting Practice; and
- have been prepared in accordance with the requirements of the Charities Act 2011.

Basis for opinion

We conducted our audit in accordance with International Standards on Auditing (UK) (ISAs (UK)) and applicable law. Our responsibilities under those standards are further described in the Auditor's responsibilities for the audit of the financial statements section of our report. We are independent of the charity in accordance with the ethical requirements that are relevant to our audit of the financial statements in the UK, including the FRC's Ethical Standard, and we have fulfilled our other ethical responsibilities in accordance with these requirements. We believe that the audit evidence we have obtained is sufficient and appropriate to provide a basis for our opinion.

Conclusions relating to going concern

In auditing the financial statements, we have concluded that the Trustee's use of the going concern basis of accounting in the preparation of the financial statements is appropriate.

Based on the work we have performed, we have not identified any material uncertainties relating to events or conditions that, individually or collectively, may cast significant doubt on the Charity's ability to continue as a going concern for a period of at least twelve months from when the financial statements are authorised for issue.

Our responsibilities and the responsibilities of the Trustee with respect to going concern are described in the relevant sections of this report.

Other information

The Trustees are responsible for the other information. The other information comprises the information included in the annual report, other than the financial statements and our auditor's report thereon. Our opinion on the financial statements does not cover the other information and, except to the extent otherwise explicitly stated in our report, we do not express any form of assurance conclusion thereon.

Our responsibility is to read the other information and, in doing so, consider whether the other information is materially inconsistent with the financial statements or our knowledge obtained in the audit or otherwise appears to be materially misstated. If we identify such material inconsistencies or apparent material misstatements, we are required to determine whether there is a material misstatement in the financial statements or a material misstatement of the other information. If, based on the work we have performed, we conclude that there is a material misstatement of this other information, we are required to report that fact.

We have nothing to report in this regard.

**Independent Auditors' Report to the Trustees of
Woman's Trust
For the year ended 31 March 2025**

Opinion on other matters prescribed by the Companies Act 2006

In our opinion, based on the work undertaken in the course of the audit:

- the information given in the Trustees' Report for the financial year for which the financial statements are prepared is consistent with the financial statements; and
- the Trustees' Report has been prepared in accordance with applicable legal requirements.

Matters on which we are required to report by exception

In the light of our knowledge and understanding of the company and its environment obtained in the course of the audit, we have not identified material misstatements in the Trustees' Report.

We have nothing to report in respect of the following matters where the Companies Act 2006 requires us to report to you if, in our opinion:

- adequate accounting records have not been kept, or returns adequate for our audit have not been received from branches not visited by us; or
- the financial statements are not in agreement with the accounting records and returns; or
- certain disclosures of Trustees' remuneration specified by law are not made; or
- we have not received all the information and explanations we require for our audit; or
- the Trustees were not entitled to prepare the financial statements in accordance with the small

Companies regime and take advantage of the small companies' exemptions in preparing the Trustees' report and from the requirement to prepare a Strategic report.

Responsibilities of Trustees

As explained more fully in the Statement of Trustees' Responsibilities, the Trustees are responsible for the preparation of the financial statements and for being satisfied that they give a true and fair view, and for such internal control as the Trustees determine is necessary to enable the preparation of financial statements that are free from material misstatement, whether due to fraud or error.

In preparing the financial statements, the Trustees are responsible for assessing the charity's ability to continue as a going concern, disclosing, as applicable, matters related to going concern and using the going concern basis of accounting unless the Trustees either intend to liquidate the charity or to cease operations, or have no realistic alternative but to do so.

Auditor's responsibilities for the audit of the financial statements

Our objectives are to obtain reasonable assurance about whether the financial statements as a whole are free from material misstatement, whether due to fraud or error, and to issue an auditor's report that includes our opinion. Reasonable assurance is a high level of assurance, but is not a guarantee that an audit conducted in accordance with ISAs (UK) will always detect a material misstatement when it exists. Misstatements can arise from fraud or error and are considered material if, individually or in the aggregate, they could reasonably be expected to influence the economic decisions of users taken on the basis of these financial statements.

Independent Auditors' Report to the Trustees of Woman's Trust For the year ended 31 March 2025

Irregularities, including fraud, are instances of non-compliance with laws and regulations. We design procedures in line with our responsibilities, outlined above, to detect material misstatements in respect of irregularities, including fraud. The extent to which our procedures are capable of detecting irregularities, including fraud is detailed below:

Capability of the audit in detecting irregularities, including fraud

The objectives of our audit are to identify and assess the risks of material misstatement of the financial statements due to fraud or error; to obtain sufficient appropriate audit evidence regarding the assessed risks of material misstatement due to fraud or error; and to respond appropriately to those risks.

Based on our understanding of the charitable sector generally, and through discussion with the Trustees and other management (as required by auditing standards), we identified that the principal risks of non-compliance with laws and regulations related to health and safety, anti-bribery and employment law. We considered the extent to which non-compliance might have a material effect on the financial statements. We also considered those laws and regulations that have a direct impact on the preparation of the financial statements such as the Companies Act 2006, taxation and pension legislation. We communicated identified laws and regulations throughout our team and remained alert to any indications of non-compliance throughout the audit. We evaluated management's incentives and opportunities for fraudulent manipulation of the financial statements (including the risk of override of controls), and determined that the principal risks were related to posting inappropriate journal entries to increase revenue or reduce expenditure and management bias in accounting estimates and judgemental areas of the financial statements. Audit procedures performed by the engagement team included:

- Discussions with Trustees and assessment of known or suspected instances of non-compliance with laws and regulations (including health and safety) and fraud; and
- Assessment of identified fraud risk factors; and
- Identifying and assessing the design effectiveness of controls that management has in place to prevent and detect fraud; and
- Challenging assumptions and judgements made by management in its significant accounting estimates; and
- Performing analytical procedures to identify any unusual or unexpected relationships, including related party transactions, that may indicate risks of material misstatement due to fraud; and
- Confirmation of related parties with management, and review of transactions throughout the period to identify any previously undisclosed transactions with related parties outside the normal course of business; and
- Reading minutes of meetings of those charged with governance; and
- Review of internal controls and physical inspection of tangible assets susceptible to fraud or irregularity; and
- Review of significant and unusual transactions and evaluation of the underlying financial rationale supporting the transactions; and
- Identifying and testing journal entries, in particular any manual entries made at the year end for financial statement preparation.

Because of the inherent limitations of an audit, there is a risk that we will not detect all irregularities, including those leading to a material misstatement in the financial statements or non-compliance with regulation. This risk increases the more that compliance with a law or regulation is removed from the events and transactions reflected in the financial statements, as we will be less likely to become aware of instances of non-compliance. The risk is also greater regarding irregularities occurring due to fraud rather than error, as fraud involves intentional concealment, forgery, collusion, omission or misrepresentation.

**Independent Auditors' Report to the Trustees of
Woman's Trust
For the year ended 31 March 2025**


As part of an audit in accordance with ISAs (UK), we exercise professional judgement and maintain professional skepticism throughout the audit. We also:

- Identify and assess the risks of material misstatement of the financial statements, whether due to fraud or error, design and perform audit procedures responsive to those risks, and obtain audit evidence that is sufficient and appropriate to provide a basis for our opinion. The risk of not detecting a material misstatement resulting from fraud is higher than for one resulting from error, as fraud may involve collusion, forgery, intentional omissions, misrepresentations, or the override of internal control.
- Obtain an understanding of internal control relevant to the audit in order to design audit procedures that are appropriate in the circumstances, but not for the purpose of expressing an opinion on the effectiveness of the charity's internal control.
- Evaluate the appropriateness of accounting policies used and the reasonableness of accounting estimates and related disclosures made by the Trustees.
- Conclude on the appropriateness of the Trustees' use of the going concern basis of accounting and, based on the audit evidence obtained, whether a material uncertainty exists related to events or conditions that may cast significant doubt on the charity's ability to continue as a going concern. If we conclude that a material uncertainty exists, we are required to draw attention in our auditor's report to the related disclosures in the financial statements or, if such disclosures are inadequate, to modify our opinion. Our conclusions are based on the audit evidence obtained up to the date of our auditor's report. However, future events or conditions may cause the charity to cease to continue as a going concern.
- Evaluate the overall presentation, structure and content of the financial statements, including the disclosures, and whether the financial statements represent the underlying transactions and events in a manner that achieves fair presentation.

We communicate with those charged with governance regarding, among other matters, the planned scope and timing of the audit and significant audit findings, including any significant deficiencies in internal control that we identify during our audit.

Use of our report

This report is made solely to the charitable company's Trustees, as a body, in accordance with Chapter 3 of Part 8 of the Charities Act 2011. Our audit work has been undertaken so that we might state to the charity's Trustees those matters we are required to state to them in an auditor's report and for no other purpose. To the fullest extent permitted by law, we do not accept or assume responsibility to anyone other than the charitable company and its Trustees as a body, for our audit work, for this report, or for the opinions we have formed.

.....

DARREN SMART
(Senior Statutory Auditor)
For and on behalf of
R.E. JONES & CO
Chartered Accountants and Statutory Auditors
132 Burnt Ash Road
Lee, London SE12 8PU
Date.....

28 Jan 2026

Woman's Trust
Statement of Financial Activities
(incorporating the Income Expenditure Account)
For the year ended 31 March 2025

	Notes	Unrestricted Funds £	Restricted Funds £	2025 Total Funds £	Note 19 2024 Total Funds £
Income and endowments from:					
Donations & legacies	2	157,417	26,729	184,146	137,912
Charitable activities					
. Grants and project funding	3	198,358	670,240	868,598	898,106
Investment income	4	8,023	-	8,023	8,454
Total income		<u>363,798</u>	<u>696,969</u>	<u>1,060,767</u>	<u>1,044,472</u>
Expenditure on:					
Raising funds					
. Fundraising costs	5	98,998	-	98,998	126,423
Charitable expenditure					
.Provision of counselling and support services	6	210,696	759,069	969,765	959,047
Total Expenditure		<u>309,694</u>	<u>759,069</u>	<u>1,068,762</u>	<u>1,085,470</u>
Net Income and movement in funds	8	54,104	(62,099)	(7,995)	(40,998)
Reconciliation of funds:					
Fund balances at 1 April 2024		447,402	89,536	536,938	577,937
Fund balances at 31 March 2025	15	<u>501,506</u>	<u>27,436</u>	<u>528,942</u>	<u>536,938</u>

The statement of financial activities includes all gains and losses recognised in the year. All income and expenditure derived from continuing activities.

Woman's Trust
Balance Sheet
As at 31 March 2025

	Notes	2025 £	2025 £	2024 £	2024 £
Fixed Assets					
Tangible assets	11		10,711		20,686
Current Assets					
Debtors	12	90,990		73,455	
Cash in hand and at bank		<u>476,580</u>		<u>479,431</u>	
		567,570		552,885	
Creditors: Amounts falling due within one year	13	<u>(49,339)</u>		<u>(36,634)</u>	
Net Current Assets			<u>518,231</u>		<u>516,252</u>
Net Assets			<u>528,942</u>		<u>536,938</u>
Funds					
Restricted funds	14		27,436		89,536
Unrestricted funds	15				
- Designated funds			80,000		40,000
- General reserves			<u>421,506</u>		<u>407,402</u>
Total Funds			<u>528,942</u>		<u>536,938</u>

The directors acknowledge their responsibilities for complying with the requirements of the Companies Act 2006 with respect to accounting records and the preparation of financial statements.

These financial statements have been prepared in accordance with the provisions applicable to companies subject to the small companies' regime.

The notes on pages 33 to 42 form part of the financial statements.

Approved by the Trustees on 26.01.2026.

and signed on their behalf by:



Chair - Niki Scordi

Company Registration Number: 06886781 (England and Wales)

Woman's Trust
Statement of Cash Flows
For the year ended 31 March 2025

	Notes	2025 £	2024 £
Net Cash Inflow/(Outflow) from Operating Activities	A	<u>(10,873)</u>	<u>(42,383)</u>
Investment income		8,023	8,454
Purchase of tangible fixed assets		-	(13,803)
Net Cash Inflow/(Outflow) provided by investing activities (bank int & fixed assets)		<u>8,023</u>	<u>(5,349)</u>
Change in cash and cash equivalents in the year		(2,850)	(47,732)
Cash and cash equivalents at 1 April 2024		479,431	527,163
Cash and cash equivalents at 31 March 2025	B	<u><u>476,580</u></u>	<u><u>479,431</u></u>

Notes to the statements of cash flows for the year to 31 March 2025

A Reconciliations of net movement in funds to net cash provided by (used in) operating activities

	2025 £	2024 £
Net movement in funds	(7,995)	(40,999)
Adjustments for:		
Depreciation	9,975	11,839
Investment income	(8,023)	(8,454)
(Increase)/decrease in debtors	(17,536)	771
Increase/(decrease) in creditors	12,705	(5,540)
Net cash (used in) provided by operating activities	<u><u>(10,873)</u></u>	<u><u>(42,383)</u></u>

B Analysis of cash and cash equivalents

	2025 £	2024 £
Total cash and cash equivalents: cash at bank and in hand	<u><u>476,580</u></u>	<u><u>479,431</u></u>

Woman's Trust
Accounting Policies
For the year ended 31 March 2025

1 Accounting Policies

Accounting Convention

The financial statements have been prepared under the historical cost convention and in accordance with the Financial Reporting Standard applicable in the UK and Republic of Ireland (FRS 102). The company is a public benefit entity for the purposes of FRS 102 and a registered charity established as a company limited by guarantee and therefore has also prepared its financial statements in accordance with the Statement of Recommended Practice applicable to charities preparing their accounts in accordance with the Financial Reporting Standard applicable in the UK and Republic of Ireland (The FRS 102 Charities SORP), the Companies Act 2006 and Charities Act 2011. The financial statements are prepared in sterling, which is the functional currency of the charity. Amounts presented are rounded to the nearest pound.

Going Concern

The trustees have assessed whether the use of going concern is appropriate and have considered possible events or conditions that might cast significant doubt on the ability of the charitable company to continue as a going concern. The trustees have made this assessment for a period of at least one year from the date of the approval of these financial statements. In particular, the trustees have considered the charitable company's forecasts and projections and have taken account of pressures on income. After making enquiries, the trustees have concluded that there is a reasonable expectation that the charitable company has adequate resources to continue in operational existence for the foreseeable future. The charitable company therefore continues to adopt the going concern basis in preparing its financial statements.

Critical accounting estimates and areas of judgement

Preparation of the accounts requires the Trustees to make significant judgements and estimates.

The items in the accounts where these judgements and estimates have been made are in estimating the useful economic life of tangible fixed assets.

Income

Income is recognised in the period in which the charity is entitled to receipt and the amount can be measured with reasonable certainty and it is probable that the income will be received.

Grants from government and other agencies have been included as income from charitable activities where these amount to a contract for services, but as donations where the money is given in response to an appeal or with greater freedom of use, for example monies for core funding.

Donated services comprise time donated to the charity by various counsellors, and the value of these services is estimated based on the number of sessions attended.

Donated rooms comprise rooms donated to the charity by various providers, and the value is estimated based on the number of hours the rooms are reserved to provide counselling services.

Resources Expended

Expenditure is included in the statement of financial activities when incurred and includes any attributable vat which cannot be recovered.

Charitable expenditure comprises expenditure on the charity's primary charitable purposes i.e. providing counselling and other services for women who have been subject to domestic violence.

Tangible Fixed Assets and Depreciation

Tangible fixed assets are stated at cost less depreciation. Depreciation is provided at rates calculated to write off the cost less estimated residual value of each asset as follows:

Furniture & Equipment	25% straight line
-----------------------	-------------------

Assets are depreciated for a whole year in the year of acquisition and not at all in the year of disposal. Items costing less than £500 are not treated as fixed assets but instead are charged as expenses in the year in which they are purchased.

Financial Instruments

Cash and cash equivalents

Cash and cash equivalents include cash at banks and in hand and short term deposits with a maturity date of three months or less.

Woman's Trust
Accounting Policies
For the year ended 31 March 2025

1 Accounting Policies (continued)

Debtors and other receivables

Debtors are recognised at their settlement amount, less any provision for non-recoverability. Prepayments are values at the amount prepaid. They have been discounted to the present value of the future cash receipt where such discounting is material.

Creditors and provisions

Creditors and provisions are recognised when there is an obligation at the balance sheet date as a result of a past event, it is probable that a transfer of economic benefit will be required in settlement, and the amount of the settlement can be estimated reliably. Creditors and provisions are recognised at the amount the charity anticipates it will pay to settle the debt. They have been discounted to the present value of the future cash payments where such discounting is material.

Fund Accounting

The unrestricted general funds comprise the monies which may be used towards meeting the charitable objectives of the charity and which may be applied at the discretion of the Trustees. Within unrestricted funds, certain funds have been designated by the Trustees for specific purposes. Details of these are given in note 15 to the financial statements.

Restricted funds comprise monies raised for, or their use restricted to, a specific purpose, or contributions subject to donor imposed restrictions.

Operating Leases

Rentals applicable to operating leases where substantially all of the benefits and risks of ownership remain with the lessor are charged to the statement of financial activities as incurred.

Pension Costs

Contributions to employees' personal pension plans and to stakeholder schemes are recognised in the statement of financial activities when payable.

Woman's Trust
Notes to the Financial Statements For
the year ended 31 March 2025

2 Donations and Legacies

	Unrestricted	Restricted	Total	Total
	2025	2025	2025	2024
	£	£		£
The donations and legacies are made up as follows:				
General donations	82,417		82,417	122,262
Donated services	-	26,729	26,729	15,650
Legacies	75,000		75,000	-
Total	157,417	26,729	184,146	137,912

Donated services comprise:

Donations of counsellors' time and spaces for services.

Time and spaces donated by volunteer counsellors and other partners during the year were £26,729 (2024:£15,560)

3 Charitable Activities

Charitable activities are made up of Unrestricted and Restricted grants and project funding as follows:

	2025	2024
	£	£
Statutory - NHS North West London ICB	27,908	27,908
Statutory - RBKC - Children and Families	-	30,000
Bruno Schroder Trust	50,000	70,000
Childwick Trust	10,000	-
Dudley & Geoffrey Cox Trust	6,250	8,000
The Henry Smith Charity	70,000	70,000
Kasuma Trust	-	10,000
New Philanthropy Capital	-	15,650
Peter Stebbings Memorial Charity	10,000	10,000
Souter Charitable	5,000	5,000
The Society of the Holy Child Jesus CIO	10,000	-
Hardship funds(Father O'Mahony Memorial Trust & Grocers Charity)	-	7,000
Other funders	9,200	14,500
Unrestricted funds	198,358	268,058

Other funders include the following, and we would like to thank them - Marsh Christian Trust, Worshipful Company of Basket Makers and The Everest Trust.

Woman's Trust
Notes to the Financial Statements For
the year ended 31 March 2025

3 Charitable Activities (continued)	2025	2024
	£	£
Statutory - Greater London Authority (Advance charity)	120,960	112,000
Statutory - Greater London Authority (Refuge)	125,488	106,247
Statutory - LB Hammersmith and Fulham Fast Track	14,500	4,986
Statutory - RBKC Community Safety Team - Serious Violence	5,000	5,000
Statutory - London Councils - Ascent (Women & Girls Network)	42,605	41,769
Statutory - London Violence Reduction Unit	43,406	24,059
Statutory - Tower Hamlets Local Community Fund	-	11,246
Statutory - Westminster CC Community Priorities Programme	6,000	30,643
Statutory - London CRS NHS	5,000	-
Cadogan Charity	5,000	5,000
Central Hackney Parochial Charities	-	10,000
Charles S French	5,000	-
Charles Hayward Foundation	25,000	25,000
City Bridge Foundation	48,935	38,650
Clothworkers	-	9,500
East End Community Foundation	10,000	-
Dr Edwards & Bishop King's Fulham Charity	7,650	7,650
The Fishmongers Company	21,000	20,000
Garfield Weston	40,000	-
Govia Thameslink	9,933	-
Hammersmith United Charity	-	14,700
Hyde Park Place Estate Charity	-	6,000
London Freemasons' Charity	10,500	10,000
Merchant Taylors' Foundation	5,000	5,000
Pathways Housing	-	10,000
Strand Parishes Trust	7,000	6,500
Tara Getty Foundation	-	7,640
The Vintners' Foundation	-	5,000
Wakefield and Tetley Trust	12,000	-
West Hackney Parochial Charities	10,755	10,755
Westminster Amalgamated Charity	8,000	10,000
Westminster Almshouses Foundation	10,000	7,000
The Worshipful Company of Cutlers	25,000	15,000
Zurich Community	36,000	49,000
*Other funders	10,509	21,703
Restricted funds	670,240	630,048
Total	868,598	898,106

Woman's Trust
Notes to the Financial Statements For
the year ended 31 March 2025

4 Investment Income	Unrestricted 2025 £	Unrestricted 2024 £
Bank interest received	<u>8,023</u>	<u>8,454</u>
5 Raising funds	Unrestricted 2025 £	Unrestricted 2024 £
Staff costs (note 9)	96,728	122,003
Other costs	2,270	4,420
	<u>98,998</u>	<u>126,423</u>

Woman's Trust
Notes to the Financial Statements
For the year 31 March 2025

6 Charitable Expenditure

Charitable expenditure comprises costs associated with the provision of counselling and support services, and are classified below.

	Unrestricted Funds £	Restricted Funds £	2025 £	Unrestricted Funds £	Restricted Funds £	2024 £
Direct Costs:						
Staff costs (note 9)	81,747	563,359	645,105	119,806	519,546	639,352
Childcare and client hardship	5,268	545	5,813	15,906	-	15,906
Counselling supervisors, volunteers training and exps	951	23,424	24,375	3,030	23,045	26,075
Paid IS assessor	-	6,450	6,450	-	-	-
Room and equipment hire	-	-	-	-	4,180	4,180
Volunteer training and expenses	-	3,481	3,481	-	2,675	2,675
Workshop and assessors expenses	-	6,540	6,540	-	11,126	11,126
Donated counselling services (note 2)	-	26,729	26,729	15,650	-	15,650
Other direct costs	133	14,440	14,573	-	10,695	10,695
	88,099	644,968	733,066	154,392	571,267	725,659
Premises Costs:						
Rent and rates	7,086	8,084	15,170	15,464	-	15,464
Administrative costs:						
Staff costs (note 9)	64,137	42,700	106,837	66,790	32,075	98,865
Central overheads	36,169	63,317	99,486	36,051	68,208	104,259
Governance costs	15,206	-	15,206	14,800	-	14,800
Total	210,696	759,069	969,765	287,498	671,549	959,047

Woman's Trust
Notes to the Financial Statements For
the year ended 31 March 2025

7 Governance Costs	Unrestricted 2025 £	Unrestricted 2024 £
Accountancy	4,800	4,800
Staff costs (note 9)	10,406	10,000
Total	15,206	14,800

8 Net Movement in Funds

This is stated after charging:

	2025 £	2024 £
Staff costs (note 9)	890,484	890,484
Audit fees (including VAT)	4,800	4,800
Depreciation	11,839	11,839
Operating lease rentals and business rates	15,464	15,464

9 Staff Costs

	2025 £	2024 £
Staff costs during the year were as follows:		
Wages and salaries	743,093	737,322
Social security costs	48,080	42,326
Employer's pension contributions	21,010	20,433
	812,183	800,082
Self employed staff	40,150	67,333
Other staff related costs (training, supervision, and travel)	5,082	3,779
Staff recruitment	13,547	19,290
	870,962	890,484
	2025 £	2024 £

Staff costs by function were as follows:

Fundraising	96,728	122,003
Marketing/Comms/Social Media	31,196	25,125
Provision of counselling and support services	554,999	551,538
Administration	177,633	181,818
Governance	10,406	10,000
	870,962	890,484

Woman's Trust
Notes to the Financial Statements
For the year ended 31 March 2025

9 Staff Costs (continued)

There was one employee with benefits (including employer's pension contribution and national insurance) between £60,001 and £70,000 per annum during the year (2024: 1).

Key Management Personnel:

Salary	No. of Employee	
--------	-----------------	--

	2025	2024
£60,001 - £70,000	1	1

The key management personnel of the charity in charge of directing and controlling, running and operating the charity on a day to day basis comprise the Trustees, Chief Executive, Head of Fundraising, Head of Therapeutic Services, Head of Peoples & Operations and Finance Manager. The total remuneration including employer's pension and national insurance of the key management personnel for the year was £236,901 (2024: £242,012).

No Trustee received any remuneration in respect of their services as as trustee during the year (2024: none). No expenses were reimbursed to Trustees during the year (2024: none).

10 Taxation

Woman's Trust is a registered charity and therefore is not liable to income tax or corporation tax on income derived from its charitable activities, as it falls within the various exemptions available to registered charities.

11 Tangible Fixed Assets

	Furniture & Equipment
Cost	
At 1 April 2024	61,304
Additions	-
At 31 March 2025	<u>61,304</u>
Depreciation	
At 1 April 2024	40,618
Charge for the year	9,975
At 31 March 2025	<u>50,593</u>
Net Book Value	
At 31 March 2024	<u>20,686</u>
At 31 March 2025	<u><u>10,711</u></u>

12 Debtors

	2025	2024
	£	£
Debtors and prepayments	2,299	1,755
Accrued income	88,691	71,699
	<u>90,990</u>	<u>73,454</u>

Woman's Trust
Notes to the Financial Statements
For the year ended 31 March 2025

13 Creditors: amounts falling due within one year

	2025	2024
	£	£
Creditors and accruals	11,495	10,921
Tax and social security	13,540	12,347
Other creditors	24,304	13,366
Total	<u><u>49,339</u></u>	<u><u>36,634</u></u>

	At 1 April			At 31
14 Restricted Funds	2024	Income	Expenditure	March 2025
	£	£	£	£
Total funds	89,536	670,240	732,340	27,436

Woman's Trust
Notes to the Financial Statements
For the year ended 31 March 2025

Purposes of Restricted Funds

The restricted resources comprise donations and grants from individuals or organisations to be expended for the continuation of counselling projects and support groups.

15 General funds

The general funds of the charity include the following designated funds which have been set aside out of unrestricted funds by the Trustees for specific purposes:

	At 1 April 2024	Income	Expenditure	At 31 March 2025
	£	£	£	£
Designated Funds:				
Provision of counselling services and advocacy	10,000	50,000	10,000	50,000
Operational costs	30,000	30,000	30,000	30,000
	<u>40,000</u>	<u>80,000</u>	<u>40,000</u>	<u>80,000</u>
General Funds	407,402	350,527	336,423	421,506
Total General Funds	<u>447,402</u>	<u>430,527</u>	<u>376,423</u>	<u>501,506</u>

All designated funds will be spent within 12 months.

Unrestricted General funds split

Designated funds	£80,000
General reserves	£421,506

Woman's Trust
Notes to the Financial Statements
For the year ended 31 March 2025

16 Analysis of net assets between funds

	General Funds £	Restricted Funds £	Total 2025 £
Fixed assets	10,711	-	10,711
Current assets	527,439	40,131	567,570
Creditors: amounts falling due within one year	(36,644)	(12,695)	(49,339)
	<u>501,506</u>	<u>27,436</u>	<u>528,942</u>

17 Lease commitments

At 31 March 2025 Woman's Trust had total commitments under operating leases on land and buildings as follows: We are on a tenancy at will with one month notice and no commitment for the year.

18 Related Party Transactions

There were no related party transactions in the financial year (2024:none)

Woman's Trust
Notes to the Financial Statements
For the year ended 31 March 2025

19 Prior Year Statement of Financial Activities

		Notes	Unrestricted Funds £	Restricted Funds £	2024 Total Funds £
Income and endowments from:					
Donations	2		137,912	-	137,912
Charitable activities	3		268,058	630,048	898,106
Investment income	4		8,454	-	8,454
Total income			<u>414,424</u>	<u>630,048</u>	<u>1,044,472</u>
Expenditure on:					
Raising Funds	5		126,423	-	126,423
Charitable Expenditure	6		287,497	671,550	959,047
Total Expenditure			<u>413,920</u>	<u>671,550</u>	<u>1,085,470</u>
Net Income/(Expenditure)			504	(41,502)	(40,998)
Transfers between funds			-	-	-
Net Income/(Expenditure) for the Year	8		<u>504</u>	<u>(41,502)</u>	<u>(40,998)</u>
Total Funds as at 1st April			<u>446,898</u>	<u>131,039</u>	<u>649,193</u>
Total Funds as at 31st March	15		<u><u>447,402</u></u>	<u><u>89,536</u></u>	<u><u>536,938</u></u>

There are no recognised gains and losses other than those passing through the statement of financial activities account. All incoming resources and resources expended derived from continuing activities.