

Charity registration number 1142679 (England and Wales)

Company registration number 07407883

THE COOPERS EDGE TRUST
ANNUAL REPORT AND UNAUDITED FINANCIAL STATEMENTS
FOR THE YEAR ENDED 31 OCTOBER 2024

THE COOPERS EDGE TRUST

LEGAL AND ADMINISTRATIVE INFORMATION

Trustees	Mr G Evans Mrs K Folker Mr D A Bentley Mrs K Driver Mrs K J Renton Mr M J Sargeant Mr A P Shackell Mr K A Smith
Charity number (England and Wales)	1142679
Company number	07407883
Registered office	Coopers Edge School Typhoon Way Brockworth Gloucester Gloucestershire England GL3 4DY
Independent examiner	BK Plus Limited 6 Manor Park Business Centre Mackenzie Way Cheltenham Gloucestershire England GL51 9TX

THE COOPERS EDGE TRUST

CONTENTS

	Page
Trustees' report	1 - 7
Independent examiner's report	8
Statement of financial activities	9
Statement of financial position	10
Notes to the financial statements	11 - 14

THE COOPERS EDGE TRUST

TRUSTEES' REPORT (INCLUDING DIRECTORS' REPORT)

FOR THE YEAR ENDED 31 OCTOBER 2024

The trustees present their annual report and financial statements for the year ended 31 October 2024.

The financial statements have been prepared in accordance with the accounting policies set out in note 1 to the financial statements and comply with the charity's governing document, the Companies Act 2006, FRS 102 "The Financial Reporting Standard applicable in the UK and Republic of Ireland" and the Charities SORP "Accounting and Reporting by Charities: Statement of Recommended Practice applicable to charities preparing their accounts in accordance with the Financial Reporting Standard applicable in the UK and Republic of Ireland (FRS 102)".

Objectives and activities

The charity's objectives, as defined in its Articles of Association, are to advance the education of the pupils at Coopers Edge School, it being acknowledged that, in carrying out the Objects, the company must have regard to its obligation to promote community cohesion under the Education Acts.

The Coopers Edge Trust is a community-led organisation, which operates the new primary school and community centre in Coopers Edge. The organisation was formed as a result of a successful proposal from the Community Edge Community Group and the Robinswood Trust.

The trust aims to provide all members of the Coopers Edge community with opportunities to achieve their full potential. We want to provide all residents, regardless of their social background, with the opportunity to:

- be healthy;
- live in a safe community;
- enjoy and achieve, through training and education available to all ages;
- make a positive contribution to the community; and
- achieve economic wellbeing.

Significant activities

The main areas of charitable activity can be broken down into four key streams:

- community organising;
- financial stability of residents;
- development of health and well-being services; and
- improved community engagement.

As a neighbourhood with low levels of social capital the charity's immediate activities are focused on creating opportunities to strengthen pro-social relationships between neighbours, whilst improving access to local services. Through community organising the Trust will promote resilience across the community by improving access to services and strengthening ties between friends, families and neighbours.

With 30% of social housing on the development, the Trust's intention is to provide workshops and services to give people them the skills and confidence to improve their chances of employment. This work stream also extends to promoting and distributing seed funding for social enterprise. By offering residents pump prime funding and training in starting up businesses, the Trust hopes to encourage the growth of social enterprises, thus contributing to employment and neighbourhood prosperity.

The provision of health and well-being services includes workshops for a range of childcare issues. Furthermore, the trustees recognise the role sport can play in bringing people together so will also create opportunities for people of all ages to participate in sport and fitness activities

Public benefit

In planning the charity's activities for the period the trustees kept in mind the Charity Commission's guidance on public benefit. The focus of the charity's activities during the period, which explains the delivery by the charity of public benefit, is set out below under 'Achievement and performance' and above under 'Objectives and aims'.

THE COOPERS EDGE TRUST

TRUSTEES' REPORT (INCLUDING DIRECTORS' REPORT) (CONTINUED)

FOR THE YEAR ENDED 31 OCTOBER 2024

Achievements and performance

Significant activities and achievements against objectives

During the period there was continued development for The Coopers Edge Trust, following the restructure of activities and roles, the continuing success of our strategic partnership (with Deli Edge) and the streamlining of a number of centre activities we have continued our focus on the profitability of the centre which ensures the centre remains a viable self-funding operation and allows us to fund further community activities in the future.

We are particularly proud that the centre has continued to strengthen its ties with its existing community user base and is now used by an ever-growing section of the community, the Community Centre continues to be a real hub for the community.

What we achieved in the period:

- posted a profit for the centre for the second year running
- continued operation and development of the community centre including considerable maintenance activity
- continued to work with key partner (Deli Edge) who manage the café
- continued improvement of the financial position of the Trust
- supported growth and development of the community
- continued to support the growth and development of Coopers Edge School
- furthered relationships with Upton St Leonards, Hucclecote and Brockworth Parish Councils

An area that we all wish to improve is the reach to community members who are childless or have adult children. These are the demographics who are currently under served by the centre.

Community Centre Performance

Over the past year the Community Centre has stayed financially stable, while continuing to be a community hub and providing a reasonably priced venue for events. We have also invested some of the profits made from hiring the centre to improve our online impact, with a vibrant and user-friendly website and new booking system.

As well as putting the monies back into the centre for essential maintenance and repairs that have come up over the past year (including electrical safety and boiler repairs), we have also employed a specialised contractor to oversee maintenance and large repairs. Due to several unexpected issues over the past year, it was felt that having an annual contract to maintain the building as well as ensuring we comply with any regulation's was essential.

The partnership between the Centre and Deli Edge Café continues to grow and be of benefit to both, together we have improved the facilities as well as continuing to offer a warm & welcoming space to the community.

We have continued to support and engage with local people starting up new projects, as well as supporting our already large network of existing hirers. While targeting a new user demographic of older adults without children, with the introduction of walking cricket with the support of The Gloucestershire Cricket Foundation. We hope to grow these types of actions over the next year.

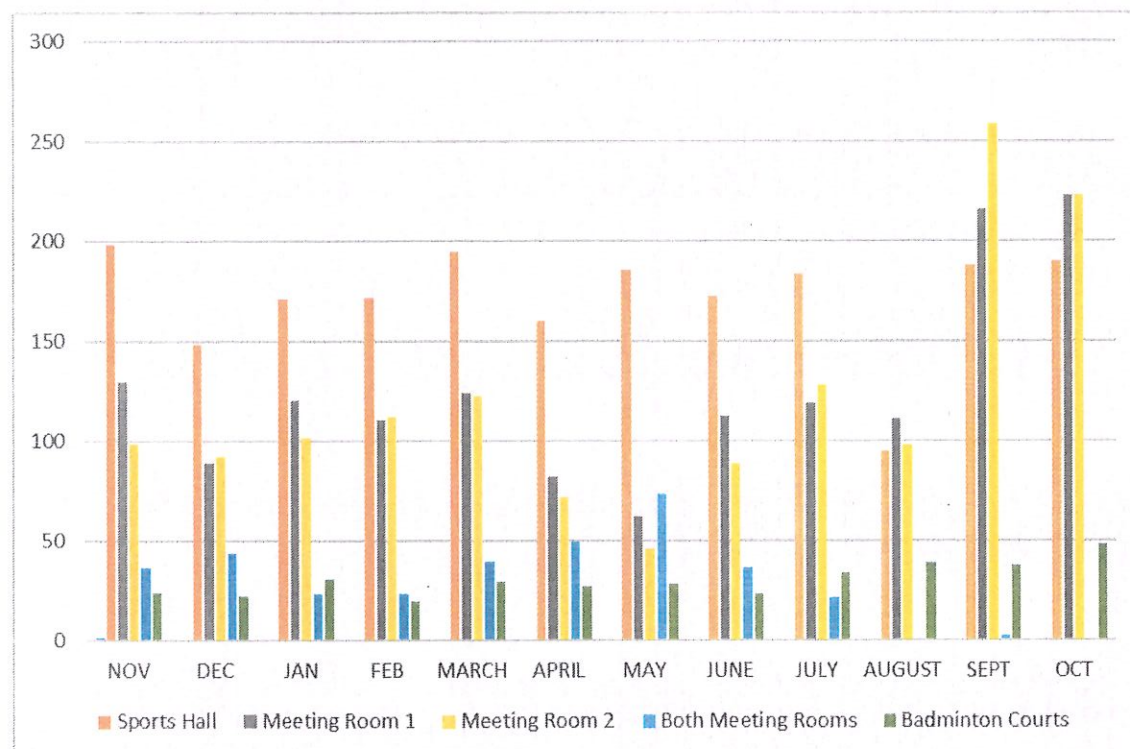
We have also continued with free community events, including our Annual Christmas event, Summer Party and with the Coopers Edge Community Church a range of Free Summer Olympic events.

We are now in a position of positive growth, good customer retention and are financially stable.

THE COOPERS EDGE TRUST

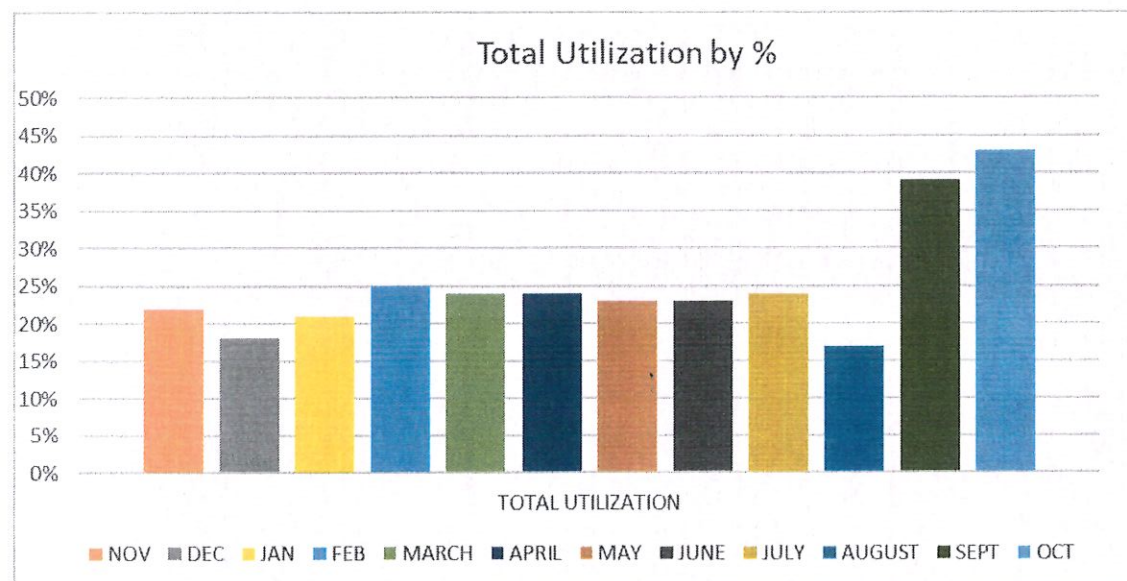
TRUSTEES' REPORT (INCLUDING DIRECTORS' REPORT) (CONTINUED) FOR THE YEAR ENDED 31 OCTOBER 2024

Utilisation/Usage



The above graph shows room utilisation by number of hours for each month. As you can see the sports hall remains consistent from November to July, dropping in August for planned summer breaks by regular hirers. However, these figures change during August, as we implemented a new booking system which went live from September. The data is recorded slightly differently but still shows a good uptake from September and October. We will have a clearer view of the impact of our booking system changes in the 24-25 report.

The below chart shows that utilization has grown significantly in September and October, we expect this to even out over the next year.

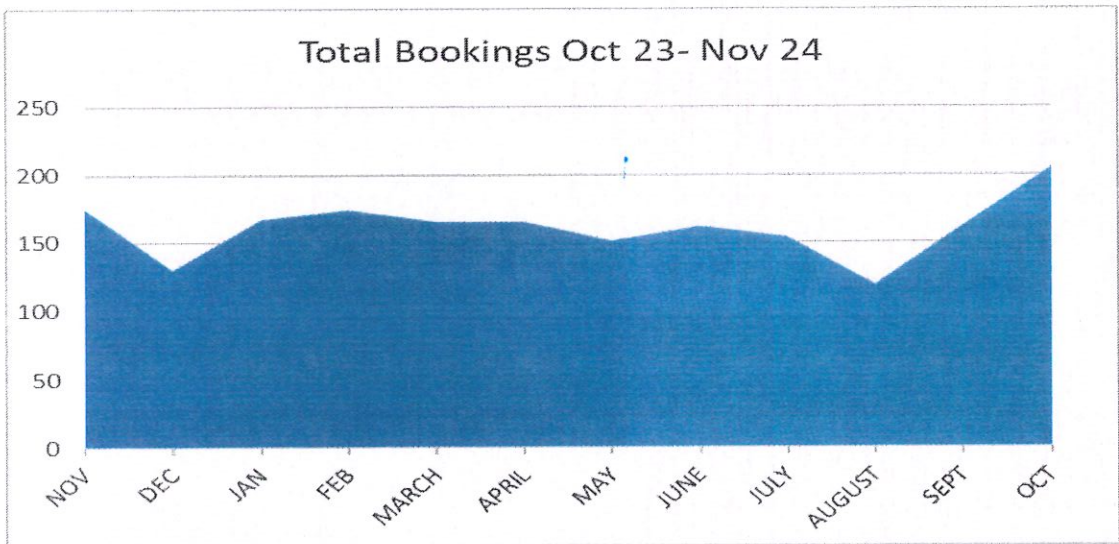


THE COOPERS EDGE TRUST

TRUSTEES' REPORT (INCLUDING DIRECTORS' REPORT) (CONTINUED)
FOR THE YEAR ENDED 31 OCTOBER 2024

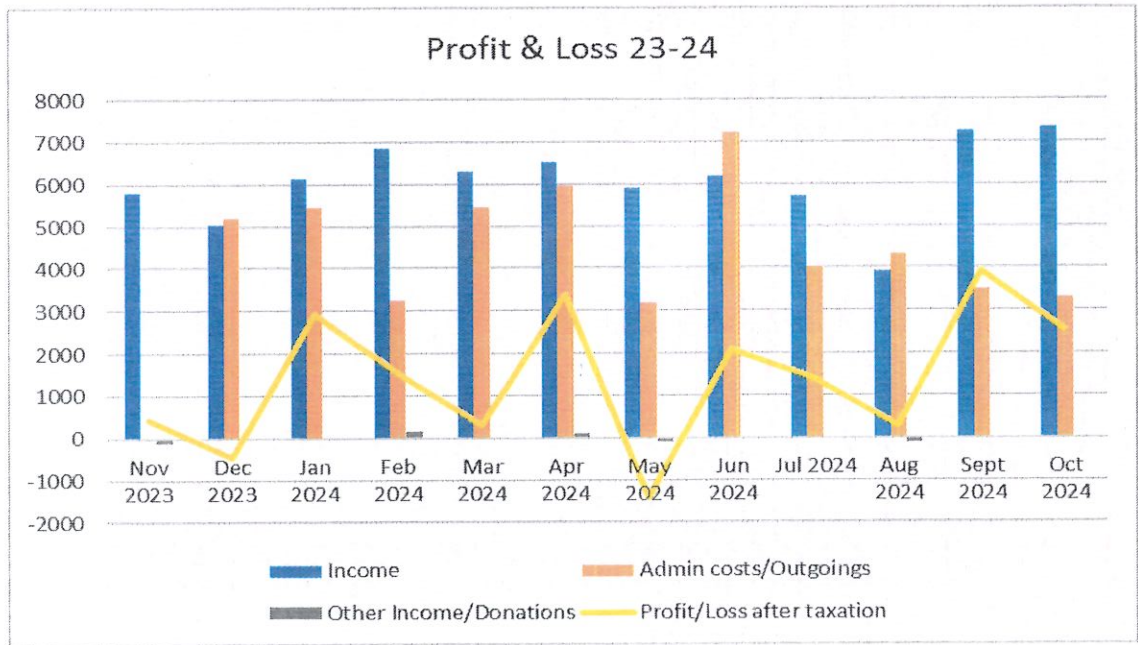
The utilisation data is backed up with the number of bookings overall across the year. The below chart shows the expected drops in bookings in December, April and August that follows the school year trend with hirers aiming at children/young children.

This also shows the increase that we have had with new bookings in September and October.



Financial report

The below shows the month by month profit and loss. As you can see overall for the year we have managed to make a small profit, continuing to be sustainable while ensuring the future of the building with planned works.

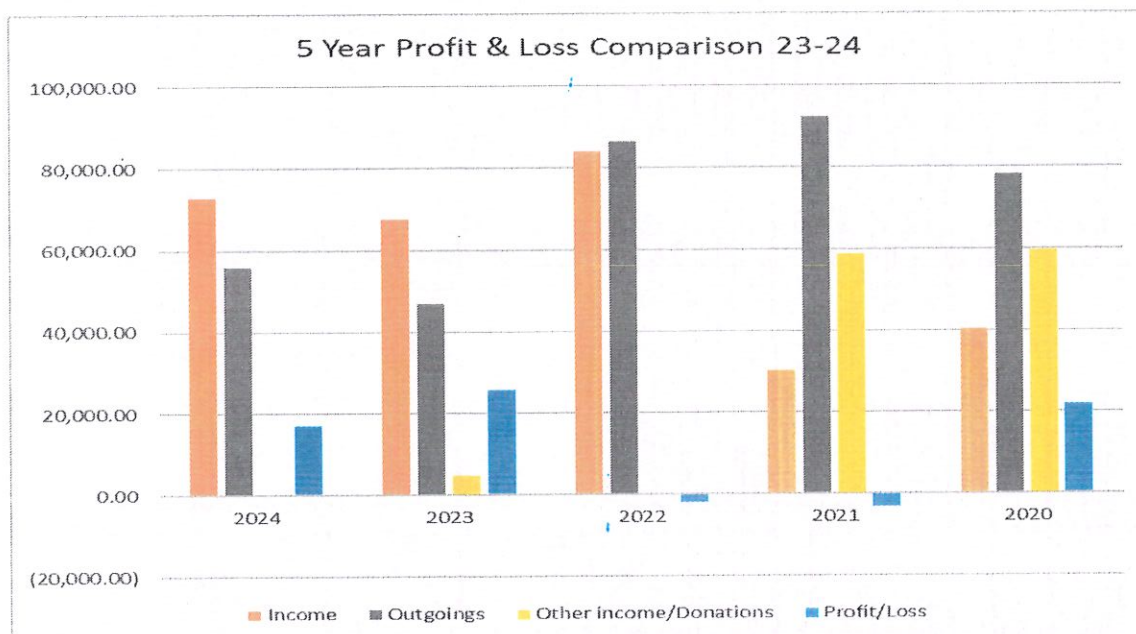


THE COOPERS EDGE TRUST

TRUSTEES' REPORT (INCLUDING DIRECTORS' REPORT) (CONTINUED)

FOR THE YEAR ENDED 31 OCTOBER 2024

When compared to the previous 5 years figures as below you can see that although we made less of a profit this year we are still growing and are in a more stable position going forward.



Future:

We hope to continue this growth in the next year, while continuing our support for local people. We are looking long term to investigate the use of grants to enhance the offerings at the community centre. We are also committed to helping to provide free training and workshops for lower income local families as well as growing our events calendar.

We are expecting to be closed for one month next year while essential building work is undertaken by Stroud District Council. This needs to be completed before we take ownership of the building in the future.

Financial review

The results for the period are shown in the attached financial statements.

Reserves policy

The Trustee Board has agreed that £10,000 of reserves should be held to support the next years planned activities. The Board consider that the Trust's reserves at 31 October 2024 are adequate.

Financial relationship with Coopers Edge School

For the purposes of clarity these financial statements do not record any transactions of Coopers Edge School, as the charity is not presently responsible for the running of the school.

THE COOPERS EDGE TRUST

TRUSTEES' REPORT (INCLUDING DIRECTORS' REPORT) (CONTINUED) FOR THE YEAR ENDED 31 OCTOBER 2024

Plans for future periods

What we hope to achieve in the next financial year:

- continue to operate the centre at profit
- work with the 3 parishes to look at opportunities to support youth provision
- provide continuing support to the new allotment facilities being built in the community
- work with Councils, developers and the community to ensure long term provision of community facilities and services in Coopers Edge
- continue to support the growth and development of Coopers Edge School
- empower the local community to develop their own resources and resilience, in order to grow as individuals and a community.

Structure, governance and management

The charity is controlled by its governing document, the Articles of Association dated 14 October 2010, and constitutes a limited company, limited by guarantee, as defined by the Companies Act 2006.

The Articles of Association have been amended by special resolutions on 19 June 2011 and 23 June 2011.

Recruitment and appointment of trustees

New trustees are appointed by their 'sponsoring' organisation (see below under 'organisational structure').

Organisational structure

Subject to any restrictions imposed by the Education Acts, membership of the Trust is open to any other individuals or organisations interested in promoting the Objects of the charity who:

- are approved by the Trustees following the approval of the governing body of Coopers Edge Primary School; and
- sign the register of members or consent in writing to become a member either personally or (in the case of an organisation) through an authorised representative.

The trustees of the charity are also directors of the company and under the company's constitution are known as members of the Trustee Board. The number of Trustees cannot be less than two or more than twelve.

The Trustee Board is currently made up of:

- two Trustees appointed by local parish councils;
- three Trustees appointed by the Coopers Edge Community Group; and
- two Trustees appointed by the governing body of Coopers Edge Primary School.

Induction and training of new trustees

Trustees have a wide range of public and private sector expertise, including education, financial and sales and management skills. Where trustee training needs are identified, appropriate courses are provided.

Risk management

The trustees have a duty to identify and review the risks to which the charity is exposed and to ensure appropriate controls are in place to provide reasonable assurance against fraud and error.

THE COOPERS EDGE TRUST

TRUSTEES' REPORT (INCLUDING DIRECTORS' REPORT) (CONTINUED) FOR THE YEAR ENDED 31 OCTOBER 2024

Statement of Trustees' Responsibilities

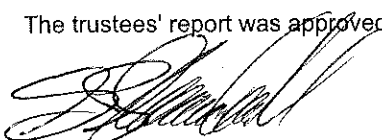
The trustees (who are also the directors of The Coopers Edge Trust for the purposes of company law) are responsible for preparing the Report of the Trustees and the financial statements in accordance with applicable law and United Kingdom Accounting Standards (United Kingdom Generally Accepted Accounting Practice) including Financial Reporting Standard 102 "The Financial Reporting Standard applicable in the UK and Republic of Ireland"

Company law requires the trustees to prepare financial statements for each financial year which give a true and fair view of the state of affairs of the charitable company and of the incoming resources and application of resources, including the income and expenditure, of the charitable company for that period. In preparing those financial statements, the trustees are required to

- select suitable accounting policies and then apply them consistently;
- observe the methods and principles in the Charity SORP;
- make judgements and estimates that are reasonable and prudent;
- prepare the financial statements on the going concern basis unless it is inappropriate to presume that the charitable company will continue in business.

The trustees are responsible for keeping proper accounting records which disclose with reasonable accuracy at any time the financial position of the charitable company and to enable them to ensure that the financial statements comply with the Companies Act 2006. They are also responsible for safeguarding the assets of the charitable company and hence for taking reasonable steps for the prevention and detection of fraud and other irregularities.

The trustees' report was approved by the Board of Trustees.



Mr A P Shackell
Trustee

14 July 2025

THE COOPERS EDGE TRUST

INDEPENDENT EXAMINER'S REPORT

TO THE TRUSTEES OF THE COOPERS EDGE TRUST

I report to the trustees on my examination of the financial statements of The Coopers Edge Trust (the charity) for the year ended 31 October 2024.

Responsibilities and basis of report

As the trustees of the charity (and also its directors for the purposes of company law), you are responsible for the preparation of the financial statements in accordance with the requirements of the Companies Act 2006.

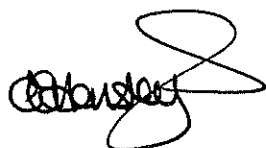
Having satisfied myself that the financial statements of the charity are not required to be audited under Part 16 of the Companies Act 2006 and are eligible for independent examination, I report in respect of my examination of the charity's financial statements carried out under section 145 of the Charities Act 2011. In carrying out my examination I have followed the Directions given by the Charity Commission under section 145(5)(b) of the Charities Act 2011.

Independent examiner's statement

I have completed my examination. I confirm that no matters have come to my attention in connection with the examination giving me cause to believe that in any material respect:

- 1 accounting records were not kept in respect of the charity as required by section 386 of the Companies Act 2006.
- 2 the financial statements do not accord with those records; or
- 3 the financial statements do not comply with the accounting requirements of section 396 of the Companies Act 2006 other than any requirement that the financial statements give a true and fair view, which is not a matter considered as part of an independent examination; or
- 4 the financial statements have not been prepared in accordance with the methods and principles of the Statement of Recommended Practice for accounting and reporting by charities applicable to charities preparing their financial statements in accordance with the Financial Reporting Standard applicable in the UK and Republic of Ireland (FRS 102).

I have no concerns and have come across no other matters in connection with the examination to which attention should be drawn in this report in order to enable a proper understanding of the financial statements to be reached.



Cinzia Hensley FCA
The Association of Chartered Certified Accountants
BK Plus Limited
6 Manor Park Business Centre
Mackenzie Way
Cheltenham
Gloucestershire
GL51 9TX
England
14 July 2025

THE COOPERS EDGE TRUST

STATEMENT OF FINANCIAL ACTIVITIES INCLUDING INCOME AND EXPENDITURE ACCOUNT

FOR THE YEAR ENDED 31 OCTOBER 2024

	Notes	Unrestricted funds 2024 £	Unrestricted funds 2023 £
Income from:			
Charitable activities	2	72,357	72,011
Total income		72,357	72,011
Expenditure on:			
Charitable activities	3	57,532	48,188
Total expenditure		57,532	48,188
Net income and movement in funds		14,825	23,823
Reconciliation of funds:			
Fund balances at 1 November 2023		53,642	29,819
Fund balances at 31 October 2024		68,467	53,642

THE COOPERS EDGE TRUST

STATEMENT OF FINANCIAL POSITION

AS AT 31 OCTOBER 2024

	Notes	2024 £	£	2023 £	£
Current assets					
Debtors	7	2,196		3,340	
Cash at bank and in hand		68,487		55,413	
		<u>70,683</u>		<u>58,753</u>	
Creditors: amounts falling due within one year	8	<u>(2,216)</u>		<u>(5,111)</u>	
Net current assets			<u>68,467</u>		<u>53,642</u>
The funds of the charity					
Unrestricted funds	9		<u>68,467</u>		<u>53,642</u>
			<u>68,467</u>		<u>53,642</u>

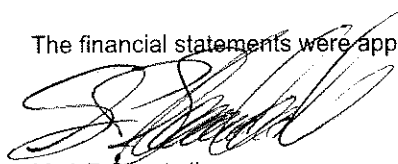
The company is entitled to the exemption from the audit requirement contained in section 477 of the Companies Act 2006, for the year ended 31 October 2024.

The directors acknowledge their responsibilities for complying with the requirements of the Companies Act 2006 with respect to accounting records and the preparation of financial statements.

The members have not required the company to obtain an audit of its financial statements for the year in question in accordance with section 476.

These financial statements have been prepared in accordance with the provisions applicable to companies subject to the small companies regime.

The financial statements were approved by the trustees on 14 July 2025



Mr A P Shackell
Trustee

Company registration number 07407883 (England and Wales)

THE COOPERS EDGE TRUST

NOTES TO THE FINANCIAL STATEMENTS

FOR THE YEAR ENDED 31 OCTOBER 2024

1 Accounting policies

Charity information

The Coopers Edge Trust is a private company limited by guarantee incorporated in England and Wales. The registered office is Coopers Edge School Typhoon Way, Brockworth, Gloucester, Gloucestershire, GL3 4DY, England.

1.1 Accounting convention

The financial statements have been prepared in accordance with the charity's governing document, the Companies Act 2006, FRS 102 "The Financial Reporting Standard applicable in the UK and Republic of Ireland" and the Charities SORP "Accounting and Reporting by Charities: Statement of Recommended Practice applicable to charities preparing their accounts in accordance with the Financial Reporting Standard applicable in the UK and Republic of Ireland (FRS 102)". The charity is a Public Benefit Entity as defined by FRS 102.

The financial statements are prepared in sterling, which is the functional currency of the charity. Monetary amounts in these financial statements are rounded to the nearest £.

The financial statements have been prepared under the historical cost convention. The principal accounting policies adopted are set out below.

1.2 Charitable funds

Unrestricted funds can be used in accordance with the charitable objectives at the discretion of the trustees.

Restricted funds can only be used for particular restricted purposes within the objects of the charity. Restrictions arise when specified by the donor or when funds are raised for particular restricted purposes.

Further explanation of the nature and purpose of each fund is included in the notes to the financial statements.

1.3 Income

All income is recognised in the Statement of Financial Activities once the charity has entitlement to the funds, it is probable that the income will be received and the amount can be measured reliably.

1.4 Expenditure

Liabilities are recognised as expenditure as soon as there is a legal or constructive obligation committing the charity to that expenditure, it is probable that a transfer of economic benefits will be required in settlement and the amount of the obligation can be measured reliably. Expenditure is accounted for on an accruals basis and has been classified under headings that aggregate all cost related to the category. Where costs cannot be directly attributed to particular headings they have been allocated to activities on a basis consistent with the use of resources.

THE COOPERS EDGE TRUST

NOTES TO THE FINANCIAL STATEMENTS (CONTINUED)

FOR THE YEAR ENDED 31 OCTOBER 2024

2 Income from charitable activities

	Unrestricted funds 2024 £	Unrestricted funds 2023 £
Facility hire	71,626	66,789
Cafe income	731	639
Grants	-	4,583
	<u>72,357</u>	<u>72,011</u>

Grants analysis

	Total 2023 £
Stroud District Council	<u>4,583</u>

3 Expenditure on charitable activities

	Total 2024 £	Total 2023 £
Direct costs		
Bought in services	23,892	21,765
Sundries	2,664	3,756
Insurance	1,189	1,063
Advertising and marketing	807	277
Cleaning	1,092	173
IT software and consumables	109	27
Repairs and maintenance	11,448	4,376
Light and heat	10,194	9,592
Telephone and TV costs	1,637	1,865
Water rates	3,433	3,216
Cafe expenses	-	345
Community engagement costs	25	773
	<u>56,490</u>	<u>47,228</u>
Share of support and governance costs (see note 4)		
Governance	1,042	960
	<u>57,532</u>	<u>48,188</u>
Analysis by fund		
Unrestricted funds	<u>57,532</u>	<u>48,188</u>

THE COOPERS EDGE TRUST

NOTES TO THE FINANCIAL STATEMENTS (CONTINUED) FOR THE YEAR ENDED 31 OCTOBER 2024

4 Support costs allocated to activities

	2024 £	2023 £
Governance costs	1,042	960
Analysed between:		
Accountancy	1,042	960

5 Trustees

None of the trustees (or any persons connected with them) received any remuneration or benefits from the charity during the year.

Trustees' expenses

There were no trustees' expenses paid for the year ended 31 October 2024 nor for the year ended 31 October 2023.

6 Taxation

The charity is exempt from taxation on its activities because all its income is applied for charitable purposes.

7 Debtors

	2024 £	2023 £
Amounts falling due within one year:		
Trade debtors	2,196	3,340

8 Creditors: amounts falling due within one year

	2024 £	2023 £
Trade creditors	2,216	5,111

9 Unrestricted funds

The unrestricted funds of the charity comprise the unexpended balances of donations and grants which are not subject to specific conditions by donors and grantors as to how they may be used. These include designated funds which have been set aside out of unrestricted funds by the trustees for specific purposes.

	At 1 November 2023 £	Incoming resources £	Resources expended £	At 31 October 2024 £
General funds	53,642	72,357	(57,532)	68,467

THE COOPERS EDGE TRUST

NOTES TO THE FINANCIAL STATEMENTS (CONTINUED)

FOR THE YEAR ENDED 31 OCTOBER 2024

9 Unrestricted funds

(Continued)

Previous year:	At 1 November 2022	Incoming resources	Resources expended	At 31 October 2023
	£	£	£	£
General funds	29,819	72,011	(48,188)	53,642

10 Related party transactions

There were no disclosable related party transactions during the year (2023 - none).