

Harvey Girls.

FOR FILING AT
COMPANIES HOUSE

Harvey Girls

(A private company limited by guarantee)

Report and Financial Statements

Year ended: 31 March 2025

Charity no: 1142555

Company no: 07533989 (England and Wales)

MONDAY



AEEILPUB

A07

03/11/2025

#95

COMPANIES HOUSE

Contents

	Pages
Legal and administrative information	1
Trustees' annual report	2 - 11
Independent Examiner's report on the accounts	12
Statement of financial activities	13
Charity balance sheet	14 - 15
Notes forming part of the financial statements	16 - 21

Legal and administrative information

Trustees:

Mrs A Clark	(Secretary)
Mrs G Wallis	(Chair)
C Wileman	(Vice Chair)
A Cooke	
Mrs C Evenden	
R Morley	
S Shakil	– Appointed 19 September 2024

Secretary: Mrs A Clark

Registered Office: 73 Horninglow Road
Burton-On-Trent
Staffordshire
DE14 2PT

Bankers: HSBC
18 High Street
Burton-On-Trent
Staffordshire
DE14 1HU

REPORT OF THE TRUSTEES

For the year ended 31 March 2025 the Trustees, who are also Directors of the Charity for the purpose of the Companies Act 2006, present their report with the financial statements of the Charity for The Period Ended 31st March 2025. The Trustees have adopted the provisions of the Statement of Recommended Practice (SORP) 'Accounting and Reporting by Charities' issued in March 2005. (Reviewed 2019)

Structure, Governance and Management

Governing Document:

The Charity is controlled by its governing document, a Memorandum and Articles and constitutes a private limited company, limited by guarantee, as defined by the Companies Act 2006.

Recruitment and Appointment of New Trustees:

The Charity operates an open recruitment policy via the Board of Trustees and the Trustee Board are of the strong belief that all new Trustees have a robust knowledge of their specific field to enhance the governance and development of the organisation.

New Trustees are provided with appropriate and thorough training as part of their induction, ensuring that they are aware of both their legal and professional responsibilities under charity law.

The Trustees aspire to and plan towards fulfilling the Charity Governance Code, with a commitment to continued good governance. This is monitored annually by a self-assessment of the Charity Governance Code.

The Trustees have a duty to identify and review the risks to which the Charity is exposed and to ensure that strong and suitable controls are in place. The Trustees continually monitor this with a standard agenda item for each Trustee Board Meeting.

The Charity's Objects

The Charity's objects ("Objects") are specifically restricted to the following:

4.1 To promote and provide facilities and activities, in the interests of personal and social welfare, health and wellbeing, recreation or other leisure time occupation of individuals who have need of such facilities by reason of their youth, age, infirmity or disablement, poverty or social and economic circumstances and activities with the object of improving their conditions of life.

4.2 To provide support to families who may be in need by reason of youth, age, ill-health, disability, financial hardship or other disadvantage, by the provision of information and guidance, support, advocacy and mentoring in the home, in a school setting, within the community or remotely.

4.3 To provide education and information in the fields of sexual health, contraception, relationships, health and wellbeing to the public at large (and especially families).

4.4 To carry out any other exclusively charitable purposes as may be conveniently or advantageously carried out in conjunction with the objectives set out in sub-clauses 1 to 3 of this clause.

Area of Benefit

4.5 To promote and provide in the area of benefit (Staffordshire, South Derbyshire and surrounding areas).

THE CHARITY'S ACTIVITIES

Harvey Girls is a local Charity based in Burton-upon-Trent providing a range of services and projects to families across East Staffordshire and the surrounding areas, with a specialism in delivering support to the whole family.

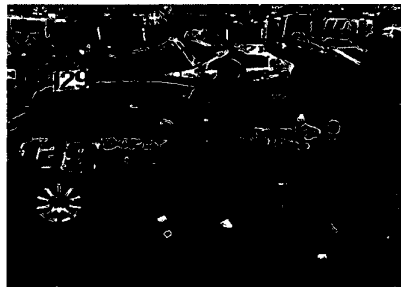
These services take on a wide variety of forms, in a range of different settings such as the family home, our Charity buildings and other community venues. Each service aims to connect families to what they need in the local community and improve outcomes for children and families alike. A large proportion of the Charity's work takes place in Lower Super Output Areas of the county and includes some of the most deprived areas as recognised by the Index of Multiple Deprivations (IMD).

Lottery Community Fund – 'Thinking Differently': Thinking Differently offers a programme of inspirational, innovative and interactive session-based activities and peer support for local families and their children in East Staffordshire, South Derbyshire and surrounding areas. ***'Thinking Differently' includes:***

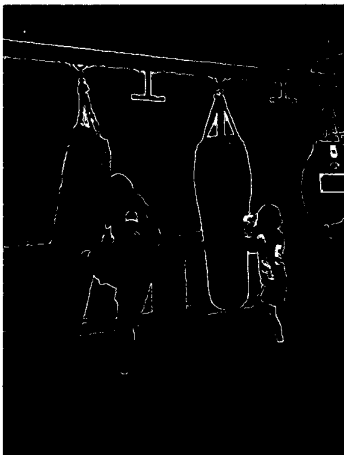
1) *Harvey Girls:* Aimed at local Mums and their children from a wide range of backgrounds and circumstances, Harvey Girls offers a programme of energetic, welcoming, safe and engaging group activities and ideas to encourage and support positive parenting, confidence and helping the children to be 'school ready'. Peer-support can be enjoyed through meeting other Mums, helping to reduce isolation, providing a sense of connection, purpose, belonging and hope. Harvey Girls is centered around sharing knowledge, experience, emotional, social or practical tips and guidance for the benefit of the whole family. We provide opportunities for parents and children to prepare for school readiness and support parents in understanding these expectations.



2) Dads4Dads: Aimed at local Dads and their children from a wide range of backgrounds and circumstances, Dads4Dads offers a programme of active, energetic and engaging activities in a safe, non-judgmental group setting. Activities will encourage Dads and their children to participate in games, challenges and creative tasks, with the aim of embedding positive relationships and an emphasis on physical interaction and play. Peer-support can be enjoyed through meeting other Dads, helping to reduce isolation, providing a sense of connection, identity, pride and courage.



3) Mixed Martial Arts: This group encourages families to spend more time together in addition to helping young people who struggle with behaviour, low self-esteem, confidence or bullying. This project offers whole family-orientated session offering mixed martial arts and other engaging physical activities in a safe, accommodating and welcoming gym setting. Parents are also encouraged to participate in order to enhance communication and family relationships. This activity also enables families to experience an activity that might not be accessible to them financially, therefore expanding the opportunities and experiences of the family group.



In addition, in December 2024 we provided a Christmas Grotto experience for the families we support through our Thinking Differently Projects, delivered by the staff team and a group of volunteers. This event enabled families to participate in an activity which they may not otherwise have been able to access due to financial restrictions or individual circumstances.



4) **Parenting Programme:** Based around the Circle of Security principles, our 7-week parenting programme aims to enlighten parents to understand their child's emotional world by learning to observe their emotional needs. This programme runs alongside Harvey Girls and Dads4Dads.



5) **Music and Movement:** Music and Movement sessions facilitate an educational experience based on learning through play. These sessions run alongside Harvey Girls and Dads4Dads. Parents can participate to enhance and expand children's enjoyment of the world around them by singing songs and rhymes that are well thought out, educational and most of all, great fun to sing.

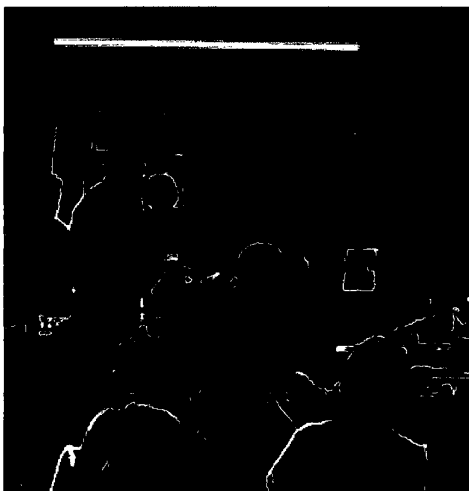


Also included within this offer is our Music for All, Thinking Differently Choir, the goal of our choir is to create a welcoming and supportive community where everyone feels valued and empowered. Their first live performance was at our Celebration Event, which took place in September 2024, and included a solo from a young member of the group.



Our Charity also delivers the Projects listed below:

1) Cadent - Be Well, Be Energy Fit (funded by Cadent Gas): Working in partnership with Cadent Gas the charity provides outreach-based support in the family home or at community venues, offering support around family wellbeing, home energy, money and home safety, including CO (Carbon Monoxide) awareness and the provision of a free CO alarm for each household. Where appropriate, information and guidance can be provided on money saving and energy efficiency, learning about the most effective use of appliances to reduce energy costs. For homeowners, a home safety check can be completed through free servicing of gas appliances (boilers, cookers, hobs and gas fires). Homeowners who previously had their appliances serviced through Cadent are now eligible for a second appliance service as part of the current funding. Where appropriate, support also includes a free Slow Cooker to help reduce energy costs for cooking on a budget, including Slow Cooker sessions to learn how to get the best use out of Slow Cookers.



2) Social Prescriber for Children and Young People

The funding for this project has now ended, but we continue to look for continuity funding and utilise the learning of this project in our overall service delivery.

Our Social Prescriber project takes a holistic approach to families' health and wellbeing, and is initially targeted at children between 5-19 years old. The service aims to help connect children, young people and families with their wider community networks. Social Prescribing for Children and Young People aims to provide earliest help, enhance emotional wellbeing and achieve health and social objectives.

3) Loneliness Support: 'Thinking Differently: Bringing Communities Together'

Despite this funding ending, we continue to apply the principles of this support throughout our whole service delivery at the discretion of the Senior Leadership Team.

This project aims to tackle loneliness and isolation for the whole family, with the objective of enabling people of all ages at any time in their lives to feel safe, well and connected to their community. This service is aimed at supporting families who are more vulnerable, less connected to community networks, less likely to have an awareness of, or reach out to statutory or specialist support services or primary health care.

4) School Link Work (funded by Abbot Beyne School): Our School Link Work sees us work in partnership with local schools, to provide School Link Workers who work with pupils, parents and teachers towards achieving positive outcomes for identified students. Our Charity's School Link Workers help to promote good communication, improve school attendance and attitudes to learning whilst creating a safe place in school where pupils can have a voice. As part of this project, we also offer holistic support for primary school pupils and disengaged students to ensure a smooth transition to secondary school and to maintain a consistent level of support during school holidays.



5) The Turnaround Programme (funded by Staffordshire County Council):

Referrals are generated via Staffordshire County Council for the Turnaround Programme and cater for children and young people at risk of offending. Young people (and their families) join a time-limited programme of 12 weeks which is determined by the needs of the young person. The Programme involves intensive support, led by one member of staff, who will seek to work together with the whole family, friendship groups, education and the community. We offer 1-2-1, group and a mix of sessions when working with young people on the Turnaround Programme.

6) The Children & Families Flexible Framework (SEND) (funded by Staffordshire County Council) Referrals are generated via Staffordshire County Council (SCC). The Children and Young People's (CYP) Flexible Framework (SEND) provides a 'Whole Family Approach' informed from the outcomes of the 'Outcome Star Assessment' and information shared upon referral. This Framework follows a restorative practice model i.e. working with people rather than doing things for them. On this framework the CYP's self-confidence and self-esteem is built by offering them support within their place of education, home and community. We work with the whole family (which can include a parenting programme) to achieve the targeted outcomes. This support is commissioned by SCC, on a call off process to support families and children with additional needs.

The Board of Trustees consider the Charity Commission's public benefit guidance when carrying out activities, to further our charitable purposes for the public benefit.

VOLUNTEER CONTRIBUTION

Volunteers underpin all of the services provided by the Charity. They are recruited to a specific role, matching their skills to the needs of the Charity and the families it supports.

Volunteers provide invaluable and unprecedented support throughout the work of the Charity but none more so than within its session-based activities. During this period, volunteers have donated 573 volunteer hours equating to a cost saving of £6555.12p to the Charity and in turn, the public purse.

We thank them and the staff team for their valuable hard work and continued commitment to the success of the organisation and the families we support.



ACHIEVEMENT AND PERFORMANCE * this data relates to a financial year not project contract year. (Year ending 31/3/25)

Successfully supporting vulnerable families for over 20 years, the Charity is proud of the recognition of being the number one provider of Family Support Services throughout East Staffordshire for over the past two decades.

Demand for the Charity's services has remained consistent, which has seen an expansion in the number and content of projects delivered across its community as needs are recognised. With the end of the Lottery Funding within this financial year, the charity continues to explore new funding opportunities to meet the needs recognised in our community.

Thinking Differently:

In 2022, the Charity was awarded an unprecedented fourth grant in National Community Lottery funding, for three years of project delivery, commencing February 2022. The data below represents the period 1st April 2024 to 31st March 2025. The National Lottery Community funding ended within this financial year, however as an organisation we continue to deliver the projects at the discretion of the Senior Leadership Team

Below is a summary of the organisations impact against each funding source within this financial year.

Project	Actual Outcome Sessions Delivered	Actual Outcome Families Attended/ Supported	Actual Outcome Beneficiaries
Harvey Girls	57	440	5321
Dads4Dads	67	468	3634
Mixed Martial Arts	96	756	6455
Be Well, Be Energy Fit	150	150	547
Turnaround	36	3	18
CYP Flexible Framework	N/A	N/A	N/A
School Link Worker	1140	60	4560
Community Choir	10	12	48
Whole Organisation	1556	1889	20583

FUNDRAISING ACTIVITIES

The Charity is mainly reliant on grants from local and national funders, and charitable bodies to fund its charitable activities. Small fundraising events and donations generate additional funds for the Charity. For the financial year ending 31/3/25 a total of £3069.10p was received through fundraising activities and donations to the charity from a combination of personal and business sources.

FINANCIAL REVIEW

Reserves Policy:

Information on the designated funds, and how these were calculated is contained in the Charity's 'Reserves Policy' document.

The 'Reserves Policy' figure is based on two main components, the funds that are required to meet the contractual/redundancy obligations, together with the costs of continuing to operate core services for 24 months assuming no further core income is secured.

The Reserves Policy is reviewed as part of the Governance timetable on an annual basis.

Funding Information:

After celebrating the 20-year anniversary of the Charity in September 2024, we have revisited and updated our Business Plan. This has been completed in consultation with our clients and has reinforced the desire of the Trustee Board to maximise our income streams with a focus on income generation through smaller grant funding.

This will be achieved through diversification, responsiveness and the implementation of robust evaluation, whilst also being mindful of any changes in Government policy, funding streams and tendering opportunities relative to our service provision.

Whilst considering the charitable objectives of The Charity, the organisation continues to build on a range of services to ensure the longevity of the service offer to local families.

The longstanding funding for our 'Thinking Differently' session-based support and activities, funded by the Lottery Community Fund, came to an end in February 2025.

Whilst we continue to identify and apply for suitable grants which meet the objectives of the 'Thinking Differently' Project, specific funding for the continuation of this project is still to be secured. In the interim, the project will continue to be funded from Charity Reserves as it is our intention to continue with all aspects of this project, which will be periodically reviewed.

In addition, the Charity continues to develop and introduce additional projects comprising of the following:

- *Be Well, Be Energy Fit (Funded by Cadent)*
- *School Link Work (funded by Abbot Beyne School)*
- *Community Choir (funded by South East Staffordshire Healthy Communities Alliance)*
- *The Turnaround Framework Agreement (funded by Staffordshire County Council)*
- *The Children & Families Flexible Framework (SEND) (funded by Staffordshire County Council)*

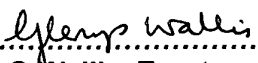
Whilst this has continued to be a challenging year, we are encouraged by our overall cost neutral financial position. This has been assisted by the Board's decision to invest Charity funds within a Financial Platform which not only affords full Financial Services Compensation Scheme (FSCS) protection but has also generated investment income of £38,009.

In addition, we have continued to feel the impact of the increasing cost of living challenges faced not only by the families we support but also within our staff team which is having a significant impact on staff retention. As a Board we have agreed to focus on a period of consolidation and are endeavoring to support our team through this difficult time.

The Board of Trustees gives consideration to the Charity Commission's public benefit guidance when carrying out activities, to further our charitable purposes for the public benefit.

ON BEHALF OF THE BOARD

On18/9/25..... and signed on their behalf by:

..........
Mrs. G Wallis, Trustee

..........
Mr. C Wileman, Trustee

Independent Examiner's Report to the Trustees of Harvey Girls

I report on the accounts of the company for the year ended 31 March 2025 which are set out on pages 12 to 21.

Respective responsibilities of trustees and examiner

The trustees (who are also the directors of the company for the purposes of company law) are responsible for the preparation of the accounts. The trustees consider that an audit is not required for this year under section 144(2) of the Charities Act 2011 (the 2011 Act) and that an independent examination is needed.

Having satisfied myself that the charity is not subject to audit under company law and is eligible for independent examination, it is my responsibility to:

- examine the accounts under section 145 of the 2011 Act;
- follow the procedures laid down in the general Directions given by the Charity Commission under section 145(5)(b) of the 2011 Act; and
- state whether particular matters have come to my attention.

Basis of independent examiner's report

My examination was carried out in accordance with the general Directions given by the Charity Commission. An examination includes a review of the accounting records kept by the charity and a comparison of the accounts presented with those records. It also includes consideration of any unusual items or disclosures in the accounts, and seeking explanations from you as trustees concerning any such matters. The procedures undertaken do not provide all the evidence that would be required in an audit and consequently no opinion is given as to whether the accounts present a "true and fair view" and the report is limited to those matters set out in the statement below.

Independent examiner's statement

I have completed my examination. I confirm that no material matters have come to my attention which gives me cause to believe that:

- accounting records were not kept in accordance with section 386 of the Companies Act 2006; or
- the accounts do not accord with such records; or
- the accounts do not comply with relevant accounting requirements under section 396 of the Companies Act 2006 other than any requirement that the accounts give a 'true and fair' view which is not a matter considered as part of an independent examination; or
- the accounts have not been prepared in accordance with the Charities SORP (FRS102)

N Chapman
.....

Ms Nicole Chapman FCCA
Chartered Certified Accountant
143 Tamworth Road, Long Eaton, Nottingham, NG10 1BY.

Dated.....*18/09/2025*.....

Statement of Financial Activities (including summary income and expenditure account) for the year ended 31 March 2025

	Notes	Unrestricted Funds (inc. designated) £	Restricted Funds £	Total 2025 £	Total 2024 £
Incoming Resources					
Incoming resources from generated funds:					
Voluntary income	2	4,595	211,502	216,097	229,242
Investment income	3	38,009	-	38,009	29,124
Total incoming resources		<u>42,604</u>	<u>211,502</u>	<u>254,106</u>	<u>258,366</u>
Resources expended					
Cost of generating funds:					
Charitable activities		-	255,009	255,009	238,179
Total resources expended	4	<u>-</u>	<u>255,009</u>	<u>255,009</u>	<u>238,179</u>
Net incoming resources/(resources expended)		<u>42,604</u>	<u>(43,507)</u>	<u>(903)</u>	<u>20,187</u>
Net movement in funds					
Fund balances brought forward at 1 April 2024		914,555	104,041	1,018,596	998,409
Transfers (see note 9)		(1,299)	1,299	-	-
Fund balances carried forward at 31 March 2025		<u>955,860</u>	<u>61,833</u>	<u>1,017,693</u>	<u>1,018,596</u>

All of the above results are derived from continuing activities. All gains and losses recognised in the year are included above.

Company registration number: 1142555 (England and Wales)

Charity Balance Sheet as at 31 March 2025

	Notes	2025 £	2024 £
Fixed assets			
Tangible assets	7	-	-
		<hr/>	<hr/>
Current assets			
Accrued income/prepayments		2,427	1,619
Debtors		387	-
Cash at bank and in hand		1,028,955	1,062,964
		<hr/>	<hr/>
		1,031,769	1,064,583
Creditors: amounts falling due within one year	8	(14,076)	(45,987)
		<hr/>	<hr/>
Net current assets		1,017,693	1,018,596
		<hr/>	<hr/>
Total assets less current liabilities		1,017,693	1,018,596
Creditors: amounts falling due after more than one year		-	-
		<hr/>	<hr/>
Net assets		1,017,693	1,018,596
		<hr/>	<hr/>
Funds:			
Unrestricted funds			
General funds		127,744	69,764
Designated funds		828,116	844,791
		<hr/>	<hr/>
		955,860	914,555
Restricted funds		61,833	104,041
		<hr/>	<hr/>
Total funds	9/10	1,017,693	1,018,596
		<hr/>	<hr/>

These accounts have been prepared in accordance with section 138 of the Charities Act 2011. These accounts are prepared in accordance with the special provisions of Part 15 of the Companies Act relating the small companies and constitute the annual accounts required by the Companies Act 2006 and are for circulation to members of the company.

For the financial year in question the company was entitled to exemption under section 477 of the Companies Act 2006 relating to small companies.

No members have required the company to obtain an audit of its accounts for the year in question in accordance with section 476 of the Companies Act 2006.


These accounts have been prepared in accordance with the provisions applicable to small companies subject to the small companies' regime and in accordance with FRS102 SORP.

Harvey Girls.

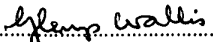
The directors acknowledge their responsibility for complying with the requirements of the Act with respect to accounting records and for the preparation of accounts.

The financial statements on page 1 to 14 were approved and authorised for issue by the trustees

On 18/09/2014 and signed on their behalf by:



Mrs A Clark, Trustee



Mrs G Wallis, Trustee

**Notes forming part of the financial statements
for the year ended 31 March 2025**

1 Accounting policies

(a) Basis of preparation

The financial statements have been prepared in accordance with Accounting and Reporting by Charities: Statement of Recommended Practice applicable to charities preparing their accounts in accordance with the Financial Reporting Standard applicable in the UK and Republic of Ireland (FRS 102) (effective 1 January 2015) – (Charities SORP (FRS 102)), the Financial Reporting Standard applicable in the UK and Republic of Ireland (FRS 102) and the Companies Act 2006.

(b) Company status

The charity is a company limited by guarantee. The members of the company are the trustees named on page 1. In the event of the charity being wound up, the liability in respect of the guarantee is limited to £1 per member of the charity.

(c) Fund accounting

General funds are unrestricted funds which are available for use at the discretion of the trustees in furtherance of the general objectives of the charity and which have not been designated for other purposes.

Designated funds comprise unrestricted funds that have been set aside by the trustees for particular purposes. The aim and use of each designated fund is set out in the notes to the financial statements. Restricted funds are funds which are to be used in accordance with specific restrictions imposed by donors or which have been raised by the charity for particular purposes. The cost of raising and administering such funds are charged against the specific fund. The aim and use of each restricted fund is set out in the notes to the financial statements.

(d) Incoming resources

All incoming resources are included in the SOFA when the charity is legally entitled to the income and the amount can be quantified with reasonable accuracy.

(e) Resources expended

All expenditure is accounted for on an accruals basis and has been classified under headings that aggregate all costs related to the category. Where costs cannot be directly attributed to particular headings they have been allocated to activities on a basis consistent with use of the resources.

(f) Tangible fixed assets and depreciation

Tangible fixed assets costing more than £1,000 are capitalised and included at cost including any incidental expenses of acquisition.

Depreciation is provided on all tangible fixed assets at rates calculated to write off the cost on a straight line basis over their expected useful economic lives as follows:

Plant and machinery	over 5 years
Fixtures and fittings	over 5 years
Office equipment	over 3 years

(g) Taxation

The charity is exempt from corporation tax on its charitable activities.

2 Voluntary income

	2025	2024
	£	£
Lottery Community Fund	71,584	82,589
Access to work	4,282	-
NHS Social Prescribing	-	25,031
School Link Worker Income	25,725	25,725
Burton Rotary Club	14,650	-
SCC Turnaround	12,924	14,500
Cadent	74,690	67,600
Family Fund	1,780	-
UHNM Community Partnership	4,167	8,333
SCC Free Pass Card Scheme	1,526	1,200
ICB Attendance	1,700	-
Donations received	3,069	4,264
	<u>216,097</u>	<u>229,242</u>

3 Investment income

	2025	2024
	£	£
Interest receivable	38,009	29,124
	<u>38,009</u>	<u>29,124</u>

4 Total resources expended

	Staff Costs (note 5) £	Other Direct Costs £	Other Allocated Costs £	Total 2025 £	Total 2024 £
Wages	192,593	-	-	192,593	180,564
Events and outgoings	-	-	-	-	-
Direct expenses	-	32,850	-	32,850	33,909
Session expenses	-	14,967	-	14,967	9,318
Professional costs	-	-	1,440	1,440	2,340
Support costs – promotion	-	-	-	-	-
Support costs – administration costs	-	-	7,473	7,473	5,148
Support costs – IT	-	-	5,686	5,686	6,900
Support costs – staff training	-	-	-	-	-
Total resources expended	192,593	47,817	14,599	255,009	238,179

Other direct expenses include:

	2025 £	2024 £
Depreciation – on owned assets	-	11

Trustees' remuneration

The trustees neither received nor waived any emoluments during the year (2024: £Nil).

Out of pocket expenses were reimbursed to trustees as follows:

	2025 £	2024 £
Travel	-	-

5 Staff costs

	2025 £	2024 £
Wages and salaries	178,697	165,022
Social security costs	9,945	7,303
Pension costs (note 6)	3,951	8,239
	192,593	180,564

	2025 Number	2024 Number
Charitable activities	8	8

6 Pension costs

The charity operates a contributory pension scheme. It is a defined contribution scheme and contributions are charged in the statement of financial activities as they accrue. The charge for the year was £3,951 (2024: £8,239).

7 Tangible fixed assets

	Plant and machinery £	Fixtures and fittings £	Office equipment £	Total £
Cost				
At 1 April 2024	4,491	898	-	5,389
Additions	-	-	-	-
Disposals	-	-	-	-
At 31 March 2025	4,491	898	-	5,389
Depreciation				
At 1 April 2024	4,491	898	-	5,389
Charge for year	-	-	-	-
Disposals	-	-	-	-
At 31 March 2025	4,491	898	-	5,389
Net book value				
At 31 March 2025	-	-	-	-
At 31 March 2024	-	-	-	-

8 Creditors: amounts falling due within one year

	2025 £	2024 £
Trade creditors	4,263	7,222
Taxation and social security costs	3,922	2,873
Accruals and deferred income	5,891	35,892
	14,076	45,987

9 Statement of funds

	At 1 April 2024 £	Income £	Expenditure £	Investment gains £	Transfers £	At 31 March 2025 £
Unrestricted funds:						
General fund	69,764	42,604	-	-	15,376	127,744
Restricted funds:						
Dads 4 Dads	32,982	-	-	-	-	32,982
SCC Turnaround	14,500	12,924	(17,756)	-	-	9,668
Family Support – SEND families	7,693	-	-	-	-	7,693
Think Differently Project/ Lottery Community Fund	13,786	71,584	(88,022)	-	2,652	-
Cadent	26,199	74,690	(100,889)	-	-	-
NHS Social Prescribing	7,173	-	(7,173)	-	-	-
School Link Worker	-	25,725	(22,555)	-	-	3,170
Access to Work	(4,242)	4,282	(444)	-	404	-
Family Fund	4,890	16,430	(13,000)	-	-	8,320
UHNM Community	791	4,167	(3,470)	-	(1,488)	-
Barratt Developments	269	-	-	-	(269)	-
ICB Attendance	-	1,700	(1,700)	-	-	-
Total restricted funds	104,041	211,502	(255,009)	-	1,299	61,833
Designated funds:						
Reserves Policy	577,514	-	-	-	(33,996)	543,518
IT Reserve	30,000	-	-	-	-	30,000
Capital Fund	237,277	-	-	-	17,321	254,598
Total restricted funds	844,791	-	-	-	(16,675)	828,116
Total funds	1,018,596	254,106	(255,009)	-	-	1,017,693

Transfers have been made between funds to ensure the fund balances held as at 31 March 2025 are in line with the charity's internal policies.

Further information on the designated funds, and how these were calculated is contained with the charity's 'Reserves Policy' document.

The 'Reserves Policy' figure of £543,518 is based on two main components, the funds that are required to meet contractual/redundancy obligations, together with the costs of continuing to operate core services for 24 months assuming no further core income is secured. This decision was decided by the Trustees following the termination of the SCC contract.

10 Analysis of group net assets between funds

	Restricted funds £	Designated fund £	Unrestricted funds £	Total £
Fund balances at 31 March 2025 are represented by:				
Current assets	75,909	828,116	127,744	1,031,769
Current liabilities	(14,076)	-	-	(14,076)
Total net assets	<u>61,833</u>	<u>828,116</u>	<u>127,744</u>	<u>1,017,693</u>