





Building Trust international is a
registered charity in England & Wales
1142338

Building Trust international
International House
45-55 Commerical St
London, E1 6BD

www.buildingtrustinternational.org
Tel: +447715283054

Welcome

Who we are

Founder's Thoughts

Activittles

Financial

Thanks

Welcome

The Trustees of Building Trust international are delighted to present our Annual Report for 2024 - 2025.

During this year, we worked on some really exciting projects. We started the year moving the first MOVINGSchool to a new site in Mae Sot in the Thai/Burma border. We completed a striking, new, colourful learning centre in Cambodia with volunteers and we finished the year starting the build of the 27th BTI school project.

We are able to continue to work on many of these projects through our partnership with Kanallan, a philanthropic consultancy working with independent humanitarian projects around the world and other long term partners, supporters and friends of Building Trust international.

We continued our relationship with Free the Bears to host an amazing design + build workshop in the Laotian jungle, where we built a new visitor centre for guests to view endangered bears.

An incredible success of this year was the partnership with a company providing plastic roofing and materials to the Paris Olympics. We re-purposed materials which were transported to Asia and then used to build a new school.

Key Aims:

- Sustainable design
- Humanitarian architecture
- Awareness raising
- Community involvement
- Aid relief
- Vocational training
- Skills Sharing
- Promote natural materials
- Education
- Create a global community
- Positive social impact

During 2025 and beyond, we look forward to delivering further educational projects and continue our work in both South East Asia and around the world.

Our work is made possible through the strong connections we have with local communities, charities, volunteers and local partners.

Many Thanks,
The Trustees April 2024/25
(We have complied with the duty in section 4 of the Charities Act 2006 to have due regard to public benefit guidance published by the Commission.)



Who we are

Building Trust International began in 2010 with the core aim to provide design and architectural assistance to existing charities, individuals and communities in need.

An important aim at Building Trust international is to set-up international stations throughout the world led by local volunteers. We connect with individuals and give them the ownership of finding local projects which are in need of design support. Our stations reach across the globe and we thank our station leaders.

Charity Structure:

A team of international volunteer engineers, designers, architects, accountants, landscape architects and more make up our enthusiastic, hardworking team. Local knowledge is key to finding sustainable local solutions, we hope to continue to build upon these relationships as we grow and deliver more projects. Creating a stronger network of like-minded caring professionals and students that can learn from one another and share resources.

TRUSTEES: Toby Maclean - Founder of Allt, Lorna Bains - Founder, Vilo Consulting, Will Postle - Associate Director at Capgemini, Jude Sellen Cole - Founder, Impact Wellbeing



Founder's Thoughts



Louise Cole,
Co-founded, Building
Trust International in
2010 and has continued
to champion the
importance of well
designed learning
environments around
the World.

"I am so incredibly proud of the work Building Trust international has carried out this year. From creating our 27th school project to building an amazing new sensory playground for children in need made from locally sourced bamboo. We have worked closely with our local partners to ensure the projects we build meet the needs of the end user and are a success. I cannot wait to see what the next 15 years hold." L Cole

Our Objectives:

To relieve the charitable needs of communities affected by ill health, poverty, war or other disaster in such ways that the Trustees see fit particularly but not exclusively by the provision of:

I) New responses to ill health, conservation, poverty, war or other disaster through design

II) The establishment of architectural projects

III) Education in construction methods and sustainable design principles

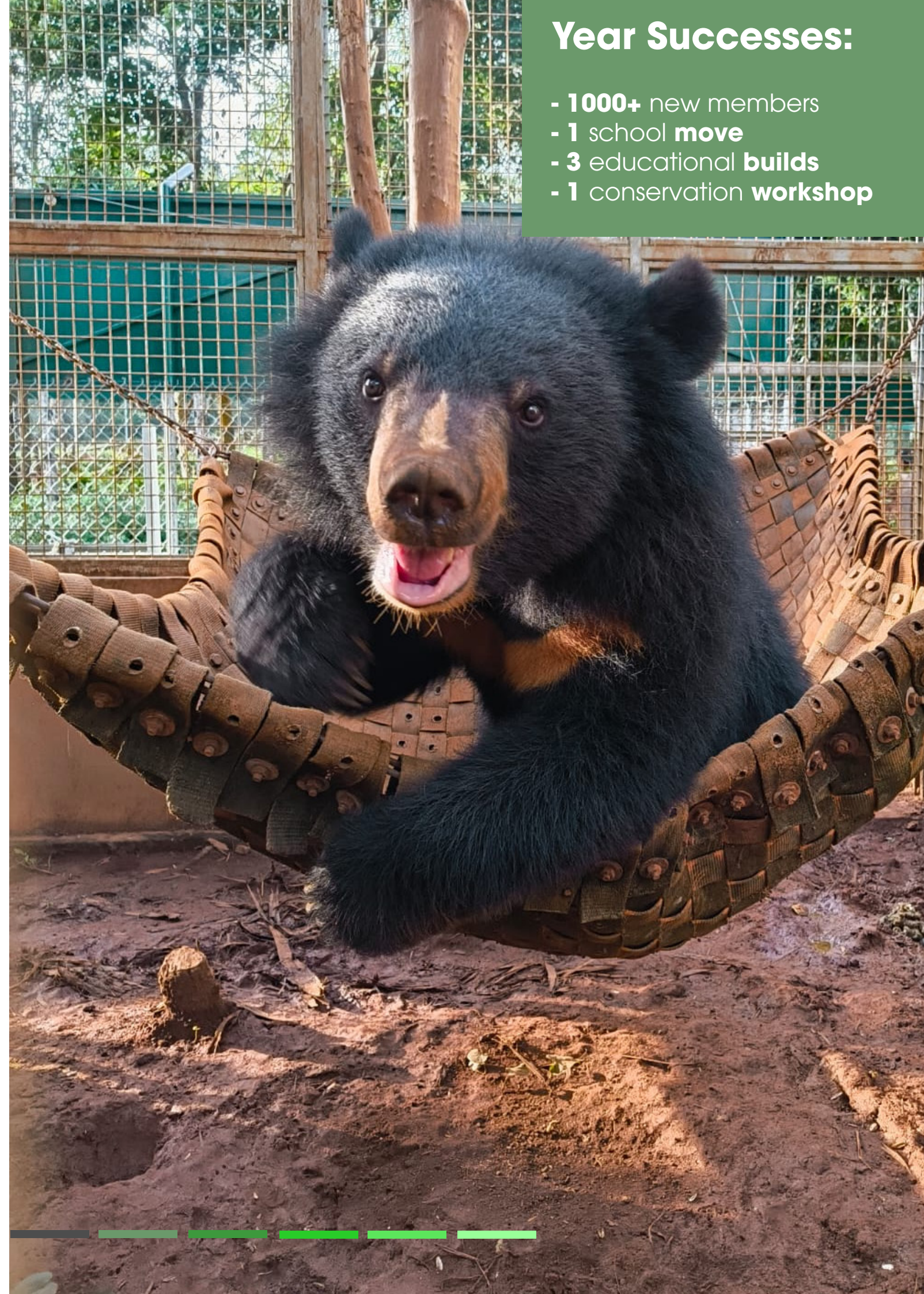
One of the ways in which we have carried out our objectives this year is through the build of an amazing new learning centre in Thailand and starting the construction of a further school for 400+ students.

We promoted sustainable design by educating and building with locally sourced materials such as bamboo, which we carried out this year through a successful Design + Build workshop in Laos.

We continue to believe **design can be used as a tool for positive social change.**

Year Successes:

- **1000+** new members
- **1** school **move**
- **3** educational **builds**
- **1** conservation **workshop**



Parahitoo Thoo



Parahitoo Thoo

A much needed new school project on the Thai/Burma border.

Following a site visit to Mae Sot, we were advised of the need for a new school building for a community in need.

In order to build the school we carried out a few different initiatives to both raise funds and gain materials to build the new school.

Founder David Cole agreed to take on a fund-raising challenge running the Edinburgh Marathon in May 2025 to raise funds for the school. We hope this challenge will both gain much needed donations but also widen our network of like minded individuals interested in sustainable design. We were also so happy to hear from one of our volunteers in Australia Rorie who agreed to take on the challenge of the Ballarat Marthon to raise funds for the school to have its very own playground.

In 2012, we partnered with a company providing plastic roofing fabric which was used on our first school MOVINGschool 001. We re-connected with this company and asked if they would like to collaborate again. The result was a partnership using waste materials from the Paris 2024 Olympics to be transported to the Thai border and used on this new school project. This is an exciting initiative and one we hope to replicate in the future.



Groundwork starts September 2024



Materials from Paris Olympics



Steel frame starts to go up on site



Existing classroom facilities at Parahitoo Thoo

Location - Mae Sot, Thailand
Project Cost - £93000 est
Project Partners - Kanallan, Ironwood, AMP Structures
Design Team - Building Trust International and Ironwood
Project Sponsors - Kanallan + Indigo Children's Fund, Private Donors, Facade Textile International
Duration - Sept 24 - Aug 25



MOVINGschool 001



MOVINGschool 001

An exciting move for MOVINGschools on the Thai/Burma border

The MOVINGschool project is a modular, re-locatable school for refugee and migrant communities, with the first schools built along the Thai-Burma border in 2012. Originating from an international design competition in 2011, the concept combines a prefabricated steel frame with locally crafted bamboo panels, creating a structure that can be disassembled and rebuilt with minimal waste and disruption.

We were later contacted by the head teacher of MOVINGschool 001, who explained that the school would have to move because the community did not have secure land rights. After working closely with the school community, a new site was identified, funds were raised, and the building was carefully de-constructed, transported, and reconstructed in its new location.

Seeing the MOVINGschool design successfully realise its promise of portability has been incredibly rewarding. During the move, the school community felt this was a good opportunity to upgrade the front wooden panels with a vibrant new painted pattern, bringing fresh colour and identity to the building in its new home.



Painting begins



School in new location



Local team deconstruct MOVINGschool 001

Location - Mae Sot, Thailand
Project Cost - £14378
Project Partners - Kanallan, Ironwood, Local school community
Design Team - Building Trust International and Ironwood
Project Sponsors - Kanallan and Indigo Children's Fund
Duration - May - June 2024



NEW road



NEW road

A storm hits New Road school

Building Trust International maintain strong relationships with the projects we have built. In April 2024, A Cyclone and series of strong storms hit one of our newly built learning centres in Mae Ramat on the Thai/ Burma border.

We reached out to our local partners, donors, volunteers and local construction team Ironwood to fundraise and fix the damaged sections of the school.

We are happy to advise that New Road was repaired quickly and the school currently hosts 300 students who are enjoying their amazing new school building.

We thank everyone involved in the repairs and those who donated to help get the school back open.



New Road from above



Exterior view of New Road

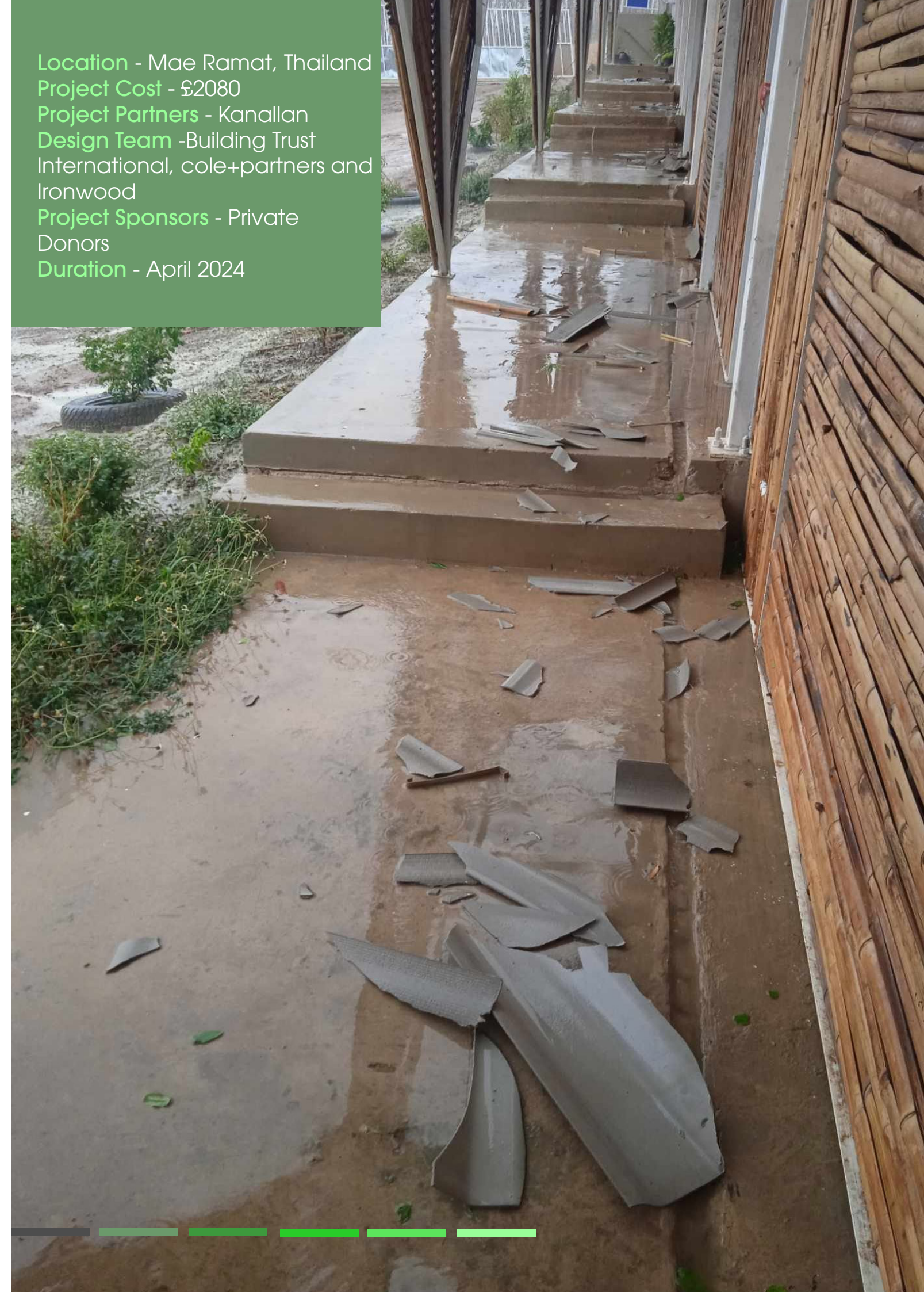


Exterior view of New Road



Internal corridor at New Road

Location - Mae Ramat, Thailand
Project Cost - £2080
Project Partners - Kanallan
Design Team - Building Trust International, cole+partners and Ironwood
Project Sponsors - Private Donors
Duration - April 2024



Bamboo Sensory Playground



Bamboo Sensory Playground

Bringing a bamboo playground to life in Phnom Penh

Seven years after completing our first project with National Borey for Infants and Children, we were invited back to support their work once again. This time with the creation of a large bamboo canopy that forms the heart of a new sensory playspace for children with special needs in Phnom Penh.

Designed in collaboration with Cole+Partners and Native Landscape Design and supported by Kanallan, the canopy creates a shaded, tactile and calming environment where children can explore, play and learn in safety and comfort.

This new playspace complements the National Borey for Infants and Children's incredible ongoing work, offering a joyful, inclusive outdoor setting that supports the development and wellbeing of some of Phnom Penh's most vulnerable children.



Enjoying their new play space



Canopy under construction



Internal view of bamboo roof canopy structure

Location - Phnom Penh, Cambodia
Project Cost - £19176
Project Partners - Leak and Chea, National Borey for Infants and Children
Design Team - cole+partners + Native Landscape Design
Project Sponsors - Kanallan and Indigo Children's Fund
Duration - June - Dec 24



CAMBODIAN learning centres



CLC - POPEL

A fantastic colourful fan shaped school design in rural Cambodia.

We are thrilled to share images of Popel School now open, an exciting new school project in Kulen National Park, Cambodia.

In 2022, Building Trust international was invited to design a series of new school buildings for rural communities in need. After extensive community consultations, the designs were finalised and today classes are fully underway at Popel School.

Situated within a protected forest, the project was developed in close collaboration with the local community, teachers, conservation NGOs and partners Kulen Outreach and Kanallan. The school provides a welcoming community hub, with multiple classrooms, covered dining areas, and shaded spaces for learning. Every element of the design was guided by the aim of creating a safe, well-ventilated environment that supports both education and community gatherings.

Earlier this year, the school community and local team of volunteers held a vibrant painting workshop, adding the finishing touches in time for the school's opening day.

Photos by Kulen Outreach



Pupils enjoying their new learning centre



Students from Popel learning centre



During class

Location - Cambodia
Project Cost -£60,000 + funding from Kulen Outreach
Project Partners -Schools, Department of Education, Kanallan
Design Team - cole+partners + KM Engineering + Form Us Design Studio
Project Sponsors -Kanallan, Kulen Outreach + Indigo Children's Fund
Duration -Aug 2023 - July 2024



HER place



HER place

HER Place women's empowerment centre opens in Nepal.

In May 2021, the winners of the "HER PLACE" design challenge were announced. Dikshya Poudyal and Dibyaswor Lamichhane. The design was selected out of proposals from more than 20 countries. The local jury members praised the winning design for its careful sensitivity to local culture, uniqueness and inclusive approach to design.

We are very pleased to share the brilliant news the HER Place has opened its doors in Nepal.

The new centre will improve access to healthcare, education and recreation that unfortunately many young women lack from an early age through to womanhood.

The creation of the centre will strengthen an existing outreach and mentor program being provided by Kanallan and the local charity Jagriti Child and Youth Concern Nepal.

Kanallan's Girls' Empowerment Programme will operate from its permanent home at HER Place and will provide education, health and menstruation training, self-defence, legal services, counselling along with finance, entrepreneurship, careers and business coaching plus much more.

Photos by Kanallan



HERPlace is complete



HERPlace



Exterior view of HERPlace

Location - Devachuli, Nepal
Project Cost - \$300,000 est
Project Partners - Kanallan and Jagriti Child and Youth Concern Nepal
Design Team - Dikshya Poudyal & Dibyaswor Lamichhane
Duration - March 2022 - present



Laos Workshop



Laos Workshop

Building Trust construct an innovative viewing platform for Free the Bears in Laos.

Following the construction of several built projects in South East Asia using natural materials and seeing the growing interest and response in sustainable design and natural materials such as bamboo. Building Trust were asked by conservation charity Free the Bears to design a new bear viewing platform to be built from bamboo in the Luang Prabang National Park.

Free the Bears work tirelessly to combat the illegal trade in live bears and provide a safe sanctuary for any rescued bears at Tat Kuang Si Rescue Centre.

The bear viewing platform is an amazing new feature at the Free The Bears project in Laos where visitors can enjoy viewing wildlife from the new space.

The project uses locally sourced bamboo which creates the form of the structure. The project is an update from the successful Bamboo Trees workshop held at the park in 2015 with Free the Bears. The project was constructed during a two week design and build workshop where participants joined from around the world to learn about sustainable design and build with local materials.



During construction



*The project in use



*External view of the viewing platform

*Photos by Free the Bears

Location - Luang Prabang, Laos

Project Cost - £7847

Project Partners - Free the Bears + Laos Department of Forestry

Design Team - Building Trust International + Design + Build workshop participants

Project Sponsors - Free the Bears + workshop participants

Duration - Sept 2024



PERU dormitories



PERU dormitories

Bringing new dormitories to life in the Sacred Valley in Peru.

We are excited to share the completion of new dormitories for children in the Sacred Valley, Peru.

Developed in partnership with Casita Huaran and Kanallan, these new buildings provide a safe, supportive place for children to live who would otherwise struggle to access education in this remote region.

Having secure, well-designed accommodation means the children can stay close to school, focus on their studies and build lasting friendships within a caring community.

This project marks a huge step forward in helping young lives grow and thrive in the Sacred Valley, opening up opportunities for education and a brighter future in this beautiful part of Peru.

We were so pleased to connect with Casita Huaran and build our first project in South America.

Photo credit Casita Huaran



Newly renovated dorms



Porch and balcony



Children enjoy their new dorms

Location - Sacred Valley, Peru
Project Cost - £23632
Project Partners - Casita Huaran
Design Team - Building Trust International
Project Sponsors - Kanallan
Duration - March 2024



Members



37 Stations

75+ Countries

87000+ Members

Stations

International,
Bangladesh, India
Hong Kong, Spain
Brazil, Greece
Mexico, USA, UK,
Canada, Australia
Colombia, Italia
Cambodia, Japan,
Bosnia & Herzegovina,
Uganda, Nepal, South
Korea, France, Egypt,
Germany, Dubai,
Costa Rica, Chile,
Argentina, Turkey,
Ecuador, Indonesia,
Poland, New Zealand,
Cote d'Ivoire, Kenya,
China, Sierra Leone
and Iran.

Volunteers

Bangladesh, India
Hong Kong, Spain
Brazil, China, South
Africa, Guatemala,
Canada, England,
Australia, Portugal,
Indonesia, France,
Burma, Malaysia, New
Zealand, Chile, Turkey,
Mexico, Ireland,
Poland, Taiwan, Peru,
Ecuador, Pakistan,
Bulgaria, Belgium,
Mozambique,
Cambodia, Greece
Argentina, Sri Lanka,
Colombia, Italy, New
Zealand, South Korea,
Austria, Scotland, USA

We would like to give a special thanks to the key volunteers who have given their free time and dedication to Building Trust over the last year. Many thanks to Emily Holdaway and GT McKillop for pro bono accountancy advice. A special thanks to Matt Hunt, Ironwood, Kulen Academy, Casita Huaran, Chan Chan and our local teams for the use of their photography this year. A huge thanks to Kanallan, Indigo Children's Fund, Free The Bears, Kulen Outreach, Casita Huaran, Chan Chan, Facade Textile International, AMP Structures and National Borey for Infants and Children for their continued support during this year.

Financial

Statement of Financial Activities Year ending 05/04/2025

The accounts follow the Guidance for Small Charities as set out by the Charity Commission. The Annual Report shows the Primary Financial Statement as shown through the SOFA.

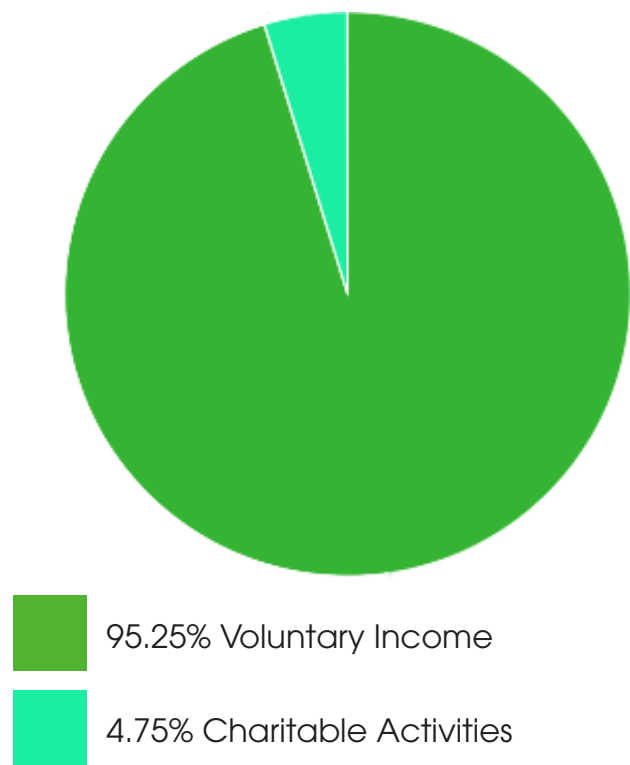
The simplified table shown shows the Total Income and Expenditure for 2024 - 2025. Note that £2072 was carried over from the previous year of accounts. Building Trust have no tangible assets and no debts.

£167995 of funds were generated through voluntary income. This included the start of two marathon fund-raising challenges, one in Australia and one in Scotland. These are to raise funds for a new learning centre and playground on the Thai/Burma border. These funds will continued to be raised during 25/26.

Funds were also raised through voluntary income, from our incredible philanthropic partner Kanallan which went towards our first build in South America and multiple new school projects around the world.

For expenditure £13791 were costs of generating voluntary income. £136202 were costs from charitable activities such as many new educational builds in Thailand and Cambodia and also a design and build workshop in Laos.

Operating Revenue 2024 - 25



As a small charity we are yet to develop a Reserves Policy. Please note we work on a project by project basis, our current funds (reserves) to be carried over to 2025-2026 are £28458. A percentage of this will be spent on developing a new school project in Bangladesh and further learning centres in Asia.

We also look forward to seeing the final totals of the two marathon fund-raisers during the next financial year.

We thank Mr GT McKillop and Mrs Emily Holdaway for their continued pro-bono accountancy support.



Charity Name Building Trust international		Charity No (if any)		1142338		CC17a
Annual accounts for the period						
Period start date	6/4/2024	To	Period end date	5/4/2025		

Section A Statement of financial activities

Recommended categories by activity	Details of own analysis	Note	Unrestricted funds	Restricted income funds	Endowment funds	Total this year	Total last year
			£	£	£	£	£
Incoming resources (Note 3)			F01	F02	F03	F04	F05
Incoming resources from generated funds							
Voluntary income		S01	167,995			167,995	129,052
Activities for generating funds		S02					
Investment income		S03					
Incoming resources from charitable activities		S04	8,384			8,384	
Other incoming resources		S05					
Total incoming resources			S06	176,379		176,379	129,052
Resources expended (Notes 4-8)							
Costs of Generating Funds							
Costs of generating voluntary income		S07	13,791			13,791	322
Fundraising trading costs		S08					
Investment management costs		S09					
Charitable activities		S10	136,202			136,202	148,801
Governance costs		S11					
Other resources expended		S12					
Total resources expended			S13	149,993		149,993	149,123
Net incoming/(outgoing) resources before transfers			S14	26,386		26,386	- 20,071
Gross transfers between funds			S15				
Net incoming/(outgoing) resources before other recognised gains/(losses)			S16	26,386		26,386	- 20,071
Other recognised gains/(losses)							
Gains and losses on revaluation of fixed assets for the charity's own use		S17					
Gains and losses on investment assets		S18					
Net movement in funds			S19	26,386		26,386	- 20,071
Total funds brought forward			S20	2,072		2,072	22,143
Total funds carried forward			S21	28,458		28,458	2,072

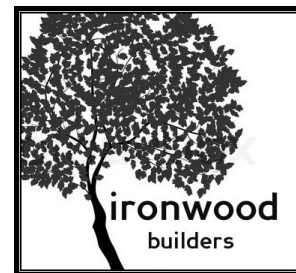
Donors & Partners

We are so thankful to all our donors who contributed to our many projects this year:

Partners:

Kanallan, Indigo Children's Fund, Free the Bears, Ironwood, Allt, cole + partners, Kulen Outreach, Jagriti Child and Youth Concern Nepal, Casita Huaran, National Borey for Infants and Children, Native Landscape Design, Laos Department of Forest, Form:us Design Studio, KM Engineering, AMP Structures and Facade Textile International.

A huge thanks to everyone who donated to Building Trust international projects around the world.



form:us



About

Building Trust International is a non profit organisation offering design assistance to communities and individuals in need. Building Trust International assesses areas in need, finds sustainable, economical aid solutions and ultimately provides buildings and infrastructure.

These core actions have blossomed into advocating and educating on the principles of socially aware design, providing an accessible resource on humanitarian design projects and providing a structure for the crossover of information between design professionals.

Building Trust International is a charity registered in England and Wales (1142338).

Staff

Founder - David Cole
Founder - Louise Cole

Consulting Partners
Allt

Media Inquiries
Please contact:
info@buildingtrustinternational.org

Speaking engagements:
Building Trust international's designers welcome the opportunity to share our work. For more information please contact Louise Cole at louise@buildingtrustinternational.org

Contact Information
Building Trust international
T. +44 7577 875816
For more information please visit:
www.buildingtrustinternational.org
Detailed information about each of our projects is shared on our Facebook group
www.facebook.com/BuildingTrustInternational
© 2010-2025 Building Trust international
All rights reserved.

Building Trust international makes every effort to ensure accuracy in donor and volunteer listings, but on occasion errors may occur. Please contact us at info@buildingtrustinternational.org with any questions or comments.



Building Trust international is a
registered charity in England & Wales
1142338

Building Trust international
International House
45-55 Commerical St
London, E1 6BD

www.buildingtrustinternational.org
Tel: +447715283054
© 2025 Building Trust International



Charity Name Building Trust international			Charity No (if any)	1142338	CC17a
Annual accounts for the period					
Period start date	6/4/2024	To	Period end date	5/4/2025	


Section A Statement of financial activities

Recommended categories by activity	Details of own analysis	Note	Unrestricted funds £	Restricted income funds £	Endowment funds £	Total this year £	Total last year £
			F01	F02	F03	F04	F05
Incoming resources (Note 3)							
Incoming resources from generated funds							
Voluntary income		S01	167,995			167,995	129,052
Activities for generating funds		S02					
Investment income		S03					
Incoming resources from charitable activities		S04	8,384			8,384	
Other incoming resources		S05					
Total incoming resources		S06	176,379			176,379	129,052
Resources expended (Notes 4-8)							
Costs of Generating Funds							
Costs of generating voluntary income		S07	13,791			13,791	322
Fundraising trading costs		S08					
Investment management costs		S09					
Charitable activities		S10	136,202			136,202	148,801
Governance costs		S11					
Other resources expended		S12					
Total resources expended		S13	149,993			149,993	149,123
Net incoming/(outgoing) resources before transfers		S14	26,386			26,386	- 20,071
Gross transfers between funds		S15					
Net incoming/(outgoing) resources before other recognised gains/(losses)		S16	26,386			26,386	- 20,071
Other recognised gains/(losses)							
Gains and losses on revaluation of fixed assets for the charity's own use		S17					
Gains and losses on investment assets		S18					
Net movement in funds		S19	26,386			26,386	- 20,071
Total funds brought forward		S20	2,072			2,072	22,143
Total funds carried forward		S21	28,458			28,458	2,072

Section B Balance sheet

	Note	Unrestricted funds £	Restricted income funds £	Endowment funds £	Total this year £	Total last year £
		F01	F02	F03	F04	F05
Fixed assets						
Tangible assets (Note 9)						
	B01	-	-	-	-	-
	B02	-	-	-	-	-
Investments (Note 10)						
	B03	-	-	-	-	-
Total fixed assets	B04	-	-	-	-	-
Current assets						
Stock and work in progress	B05	-	-	-	-	-
Debtors	B06	-	-	-	-	-
(Short term) investments	B07	-	-	-	-	-
Cash at bank and in hand	B08	-	-	-	-	-
Total current assets	B09	-	-	-	-	-
Creditors: amounts falling due within one year (Note 12)	B10	-	-	-	-	-
Net current assets/ (liabilities)	B11	-	-	-	-	-
Total assets less current liabilities	B12	-	-	-	-	-
Creditors: amounts falling due after one year (Note 12)	B13	-	-	-	-	-
Provisions for liabilities and charges	B14	-	-	-	-	-
Net assets	B15	-	-	-	-	-
Funds of the Charity						
Unrestricted funds						
	B16	-	-	-	-	-
	B17	-	-	-	-	-
Restricted income funds (Note 13)						
	B18	-	-	-	-	-
Endowment funds (Note 13)	B19	-	-	-	-	-
Total funds	B20	-	-	-	-	-

Signed by one or two trustees
on behalf of all the trustees

Signature	Print Name	Date of approval
	JUDE SELLEN COLE	28/10/2025

Cells highlighted in Yellow contain formulas to add up columns C,D and E but these are not protected cells

Cells highlighted in Blue contain formulas in protected cells. The protection can be removed from the tools menu

Note 1 **Basis of preparation**

This section should be completed by all charities.

1.1 Basis of accounting

These accounts have been prepared on the basis of historic cost (except that investments are shown at market value) in accordance with:

- Accounting and Reporting by Charities – Statement of Recommended Practice (SORP 2005);
- and with*

ü

 Accounting Standards;
- or

 Financial Reporting Standards for Smaller Enterprises (FRSSE);
- and with the Charities Act.

[** except for the following].

Give details in this box if a different standard has been followed.

* -Tick as appropriate:

· if all relevant disclosures shown in the pack have been given then please tick "Accounting Standards";

· if disclosures completed in these accounts have been restricted to those required by the FRSSE, then please tick "Financial Reporting Standards for Smaller Enterprises (FRSSE)".

** - If no departures from the chosen standards have been made then delete these words; otherwise give details of any changes in the boxes.

1.2 Change in basis of accounting

There has been no change to the accounting policies (valuation rules and methods of accounting) since last year (§ except for the following).

Give details in this box of any material changes that have been made.

§ if no changes have been made to accounting policies then delete these words.

1.3 Changes to previous accounts

No changes have been made to accounts for previous years (§§ except for the following).

Give details in this box of any material changes that have been made.

§§ if no changes have been made to accounts for previous periods then delete these words.

Note 2 Accounting policies

This standard list of accounting policies has been applied by the charity except for those deleted. Where a different or additional policy has been adopted then this is detailed in the box below.

INCOMING RESOURCES

Recognition of incoming resources	These are included in the Statement of Financial Activities (SoFA) when: <ul style="list-style-type: none"> · the charity becomes entitled to the resources; · the trustees are virtually certain they will receive the resources; and · the monetary value can be measured with sufficient reliability.
Incoming resources with related expenditure	Where incoming resources have related expenditure (as with fundraising or contract income) the incoming resources and related expenditure are reported gross in the SoFA.
Grants and donations	Grants and donations are only included in the SoFA when the charity has unconditional entitlement to the resources.
Tax reclaims on donations and gifts	Incoming resources from tax reclaims are included in the SoFA at the same time as the gift to which they relate.
Contractual income and performance related grants	This is only included in the SoFA once the related goods or services have been delivered.
Gifts in kind	Gifts in kind are accounted for at a reasonable estimate of their value to the charity or the amount actually realised. Gifts in kind for sale or distribution are included in the accounts as gifts only when sold or distributed by the charity. Gifts in kind for use by the charity are included in the SoFA as incoming resources when receivable.
Donated services and facilities	These are only included in incoming resources (with an equivalent amount in resources expended) where the benefit to the charity is reasonably quantifiable, measurable and material. The value placed on these resources is the estimated value to the charity of the service or facility received.
Volunteer help	The value of any voluntary help received is not included in the accounts but is described in the trustees' annual report.
Investment income	This is included in the accounts when receivable.
Investment gains and losses	This includes any gain or loss on the sale of investments and any gain or loss resulting from revaluing investments to market value at the end of the year.

EXPENDITURE AND LIABILITIES

Liability recognition	Liabilities are recognised as soon as there is a legal or constructive obligation committing the charity to pay out resources.
Governance costs	Include costs of the preparation and examination of statutory accounts, the costs of trustee meetings and cost of any legal advice to trustees on governance or constitutional matters.
Grants with performance conditions	Where the charity gives a grant with conditions for its payment being a specific level of service or output to be provided, such grants are only recognised in the SoFA once the recipient of the grant has provided the specified service or output.
Grants payable without performance conditions	These are only recognised in the accounts when a commitment has been made and there are no conditions to be met relating to the grant which remain in the control of the charity.
Support Costs	Support costs include central functions and have been allocated to activity cost categories on a basis consistent with the use of resources, eg allocating property costs by floor areas, or per capita, staff costs by the time spent and other costs by their usage.

ASSETS

Tangible fixed assets for use by charity	These are capitalised if they can be used for more than one year, and cost at least £500. They are valued at cost or a reasonable value on receipt.
Investments	Investments quoted on a recognised stock exchange are valued at market value at the year end. Other investment assets are included at trustees' best estimate of market value.
Stocks and work in progress	These are valued at the lower of cost or market value.

**POLICIES ADOPTED
ADDITIONAL TO OR
DIFFERENT FROM
THOSE ABOVE**

Note 3 Analysis of incoming resources

Incoming resources may be further analysed if this would help the reader of the accounts.

	Analysis	This year £	Last year £
Voluntary income	Public Donations (unrestricted)	2,202	13,750
	Public Donations (restricted)		
	Gift Aid	563	302
	New Road School	2,080	75,000
	Parahita Htoo school	74,083	
	MS1	14,377	
	Peru Dormitories	23,632	
	Bangladesh School	15,619	
	Cambodian Learning Centres	10,538	40,000
	Bamboo Sensory Playground	19,176	
	Parihitoo Marathon Fundraiser	5,725	
	Total	167,995	129,052
Activities for generating funds			
	Total		
Investment income			
	Total		
Incoming resources from charitable activities	Laos FTB Workshop	8,384	
	Total	8,384	-

Note 4 Analysis of resources expended

Resources expended may be further analysed if this would help the reader of the accounts.

	Analysis	This year £	Last year £
Costs of generating voluntary income	Bank incoming charges		
	Web Domain	84	138
	International bank charges	74	81
	Office	103	98
	Publicity		5
	Fundraising	13,531	
	Total	13,791	322
Fundraising trading costs			
	Total		
Investment management costs			
	Total		
Charitable activities	Cambodia Learning Centres	10,538	63,493
	FTB Asia (unres)		6,593
	Bamboo Sensory Playground	19,176	
	FTB Laos Workshop	7,847	
	Love Learning Centre		15,320
	New Road School	2,080	59,953
	MS1	14,378	
	Forest School		3,215
	Parahithoo School	71,139	227
	Kulen Academy	363	
	Peru Dormitories	10,681	
	Total	136,202	148,801
Governance costs			-
		-	-
		-	-
	Total	-	-
Other resources expended			
	Total		

Note 5 Support Costs

Please complete this note if the charity has analysed its expenses using activity categories and has support costs.

Support cost type	Fundraising activity £	Charitable Activity £	Governance Activity £	Total Cost £
	-	-	-	-
	-	-	-	-
	-	-	-	-
	-	-	-	-
	-	-	-	-
	-	-	-	-
	-	-	-	-
Total	-	-	-	-

Note 6 Details of certain items of expenditure**6.1 Trustee expenses**

Please provide details of the amount of any payment or reimbursement of out-of-pocket expenses made to trustees or to third parties for expenses incurred by trustees. If no expenses were paid, please enter 'None' in the appropriate box(es).

Number of trustees who were paid expenses

Nature of the expenses

Total amount paid

This year	Last year
£	£

6.2 Fees for examination or audit of the accounts

Please provide details of the amount paid for any statutory external scrutiny of accounts and other services provided by your independent examiner or auditor. If nothing was paid please enter NONE in the appropriate box(es).

Independent examiner's or auditors' fees for reporting on the accounts

Other fees (for example: advice, consultancy, accountancy services) paid to the independent examiner or auditor

This year £	Last year £

Note 7

Paid employees

Please complete this note if the charity has any employees.

7.1 Staff Costs

	This year £	Last year £
Gross wages, salaries and benefits in kind	26,250	17,500
Employer's National Insurance costs	2,367	1,159
Pension costs		
Total staff costs	28,617	18,659

7.2 Average number of full-time equivalent employees in the year

The parts of the charity in which the employees work

	This year Number	Last year Number
Fundraising	-	-
Charitable Activities	-	-
Governance	-	-
Other	-	-
Total	-	-

7.3 Defined contribution pension scheme

Please complete if a defined contribution pension scheme is operated.

Brief details of the scheme

--

	This year £	Last year £
The costs of the scheme to the charity for the year		
The amount of any contributions outstanding at the year end		
The amount of any contributions prepaid at the year end		

Note 8 **Grantmaking**

Please complete this note if the charity made any grants or donations which in aggregate form a material part of the charitable activities undertaken.

8.1 Total value of grants

Purpose for which grants made	Grants to institutions Total amount £	Grants to individuals Total amount £
	-	-
	-	-
	-	-
	-	-
	-	-
	-	-
Total	-	-

8.1 Grantmaking costs

If the charity's accounts are prepared on the "activity basis" please give details of any support cost associated with grantmaking. Please enter "Nil" if the charity does not identify and/or allocate support costs.

Support costs of grantmaking

£

8.3 Grants made to institutions

If the charity has made grants to particular institutions that are material in the context of its grantmaking please give details of the institution supported, purpose of the grant and total paid to each institution listed. Sufficient information should be given to provide a reasonable understanding of the range of institutions supported.

Range of institutions supported.		
Names of institutions	Purpose	Total amount of grants paid £
		-
		-
		-
		-
		-
		-
		-
		-
		-
		-
		-
Total grants to institutions		-

Note 9 Tangible fixed assets*Please complete this note if the charity has any tangible fixed assets***9.1 Cost or valuation**

	Freehold land & buildings	Other land & buildings	Plant, machinery and motor vehicles	Fixtures, fittings and equipment	Payments on account and assets under construction	Total
	£	£	£	£	£	£
Balance brought forward	-	-	-	-	-	-
Additions	-	-	-	-	-	-
Revaluations	-	-	-	-	-	-
Disposals	-	-	-	-	-	-
Transfers *	-	-	-	-	-	-
Balance carried forward	-	-	-	-	-	-

9.2 Accumulated depreciation and impairment provisions

**Basis	SL or RB	SL or RB	SL or RB	SL or RB	SL or RB
** Rate					

Balance brought forward	-	-	-	-	-	-
Depreciation charge for year	-	-	-	-	-	-
Impairment provisions	-	-	-	-	-	-
Revaluations	-	-	-	-	-	-
Disposals	-	-	-	-	-	-
Transfers*	-	-	-	-	-	-
Balance carried forward	-	-	-	-	-	-

9.3 Net book value

Brought forward	-	-	-	-	-	-
Carried forward	-	-	-	-	-	-

9.4 Revaluation*If any fixed assets have been revalued please give details of the valuer and method of valuation*

--

* The "transfers" row is for movements between fixed asset categories.

** Please indicate the method of depreciation by deleting the method not applicable (SL = straight line; RB = reducing balance). Also please indicate the rate of depreciation: for straight line, what is the anticipated life of the asset (in years); for reducing balance, what is the percentage annual deduction.

Note 10 Investment assets

Please complete this note if the charity has any investment assets.

10.1 Fixed assets investments

	£
Carrying (market) value at beginning of year	-
Add: additions to investments at cost	-
Less: disposals at carrying value	-
Add/(deduct): net gain/(loss) on revaluation	-
Carrying (market) value at end of year	-

Please provide below:

10.2 A breakdown of the market values of investments shown above agreeing with the balance sheet row B03.

10.3 A breakdown of the income from investments agreeing with SOFA row S03.

Analysis of investments

	10.2 Market value at year end £	10.3 Income from investments for the year £
Investment properties	-	-
Investments listed on a recognised stock exchange or held in common investment funds, open ended investment companies, unit trusts or other collective investment schemes	-	-
Investments in subsidiary or connected undertakings and companies	-	-
Securities not listed on a recognised Stock Exchange	-	-
Cash held as part of the investment portfolio	-	-
Other investments	-	-
Total	-	-

10.4 Material investment holdings

If any single investment is material in terms of its value (for example represents more than 5 per cent of the value of the charity's total investments) please provide details.

Investment held	
Market Value	

Note 11 Debtors and prepayments

Please complete this note if the charity has any debtors or prepayments.

Analysis of debtors

	Amounts falling due within one year		Amounts falling due after more than one year	
	This year £	Last year £	This year £	Last year £
Trade debtors	-	-	-	-
Amounts due from subsidiary and associated undertakings	-	-	-	-
Other debtors	-	-	-	-
Prepayments and accrued income	-	-	-	-
Total	-	-	-	-

Note 12 Creditors and accruals

Please complete this note if the charity has any creditors or accruals.

12.1 Analysis of creditors

	Amounts falling due within one year		Amounts falling due after more than one year	
	This year £	Last year £	This year £	Last year £
Loans and overdrafts	-	-	-	-
Trade creditors	-	-	-	-
Amounts due to subsidiary and associated undertakings	-	-	-	-
Other creditors	-	-	-	-
Accruals and deferred income	-	-	-	-
Total	-	-	-	-

12.2 Security over assets

If any loan, overdraft or other creditor holds a charge or other security over any assets of the charity please provide details.

--

Note 14 Transactions with related parties

If the charity has any transactions with related parties (other than the trustee expenses explained in note 6) details of such transactions should be provided in this note. If there are no transactions to report, please enter "None" in the relevant boxes.

14.1 Remuneration and benefits

Please give the amount of, and legal authority for, any remuneration or other benefits paid to a trustee or other related parties by the charity or any institution or company connected with it.

Name of trustee or connected party	Legal authority (eg order, governing document)	Amounts paid or benefit value	
		This year £	Last year £

14.2 Loans

Please give details of and amounts owing to or from the charity's trustees or other related parties by the charity at the year end.

	Name of trustee or connected party	Legal authority	Amount owing	
			This year £	Last year £
Due to trustees and related parties				
Due from trustees and related parties				

14.3 Other transaction(s) with trustees or related parties

Please give details of any transaction undertaken by (or on behalf of) the charity in which a trustee or related party has a material interest.

Name of the trustee or related party	Relationship to charity	Description of the transaction(s)	This year £	Last year £

Section C	Notes to the accounts	(cont)
Note 15	Additional Disclosures	<p>The following are significant matters which are not covered in other notes and need to be included to provide a proper understanding of the accounts. If there is insufficient room here, please add a separate sheet.</p>



Independent examiner's report on the accounts

Section A

Independent Examiner's Report

Report to the trustees

Building Trust International

On accounts for the year ended

05/04/2025

Charity no (if any)

1142338

Set out on pages

I report to the trustees on my examination of the accounts of the above charity ("the Trust") for the year ended **05/04/2025**.

Responsibilities and basis of report

As the charity's trustees, you are responsible for the preparation of the accounts in accordance with the requirements of the Charities Act 2011 ("the Act").

I report in respect of my examination of the Trust's accounts carried out under section 145 of the 2011 Act and in carrying out my examination, I have followed all the applicable Directions given by the Charity Commission under section 145(5)(b) of the Act.

Independent examiner's statement

I have completed my examination. I confirm that no material matters have come to my attention in connection with the examination which gives me cause to believe that in, any material respect:

- the accounting records were not kept in accordance with section 130 of the Charities Act; or
- the accounts did not accord with the accounting records; or
- the accounts did not comply with the applicable requirements concerning the form and content of accounts set out in the Charities (Accounts and Reports) Regulations 2008 other than any requirement that the accounts give a 'true and fair' view which is not a matter considered as part of an independent examination.

I have no concerns and have come across no other matters in connection with the examination to which attention should be drawn in this report in order to enable a proper understanding of the accounts to be reached.

Signed:

Date: 05/01/2026

Name: Mrs Emily Annette Holdaway

Relevant professional qualification(s) or body (if any): Member of the Chartered Institute of Management Accountants
Member ID 1-82YNC

Address: 56 Gordon Avenue
Bristol
BS5 7DS

Section B

Disclosure

Only complete if the examiner needs to highlight material matters of concern (see CC32, Independent examination of charity accounts: directions and guidance for examiners).

Give here brief details of any items that the examiner wishes to disclose.

N/A