



Community Transport



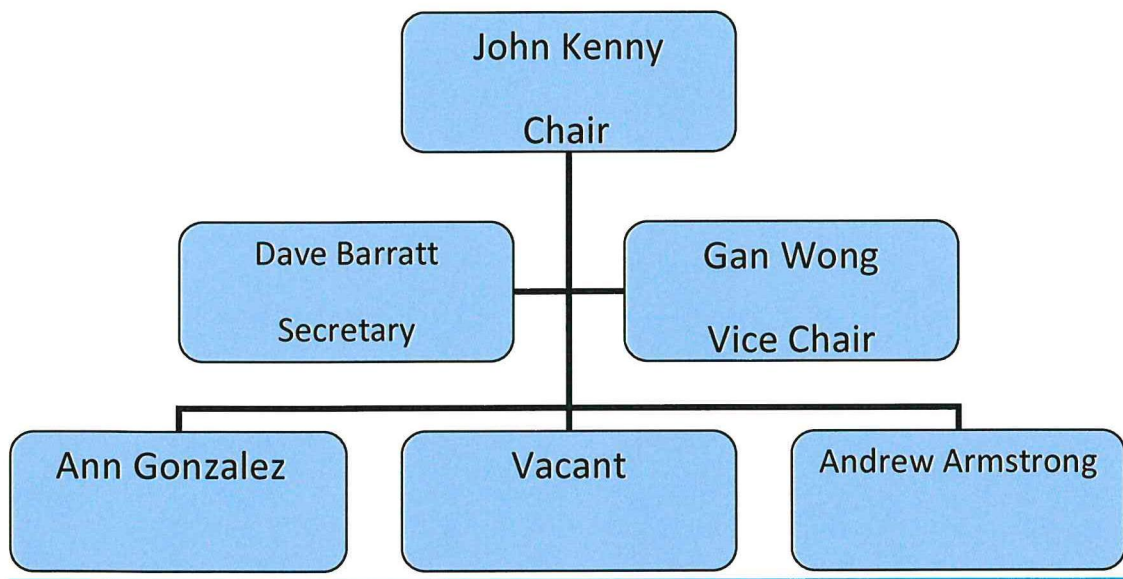
Annual Report

2019 - 2020

Easy go Community Transport (Stockport) LTD
Oak House
Newby Road Industrial Estate
Hazel Grove
Stockport
SK7 5DA

Telephone Number: 0161 419 3580
E-Mail: info@easygoct.org.uk
Website: www.easygoct.org.uk
Twitter: [@EasyGo_CT](https://twitter.com/EasyGo_CT)

Trustees 2018/2019



Staff & Volunteers 2019/2020

Office Staff

Carl Schoolden

Sue Smith

Janet Penn

Grant Misell

Lucy Birkhead

General Manager

Operations Manager

Booking Clerk/Admin Oct 2019)

Administrator

Covering for Janet

Drivers

Paul Jones

Colin Shelmerdine

Darren Watt

Christian White

Barry Udale

David Shearman

Danny Bond

Henry Woodward

Stephen Burke

Alan Foster

Ian Kennedy

Mike Nolan

Graham Shaw

Joe Woodward

Gordon Pell

John Bolton

Richard Greaves

John Ford

Garry Barratt

Winston Scarlott

Passenger Assistant

Lesley Lister

Bev Jones

Lauren Hollinshead

Lucy Birkhead

Leanne Scott

Susan Burke

Tracey Roberts

Linda Clayton

Leone Edge

Johana Worley

Alistair Hill

Volunteers

Gan Wong

Andrew Armstrong

Anne Gonzalez

Dave Barratt

John Kenny

Charity Registration No. 1142212

Company Registration No. 03285361 (England and Wales)

EASY-GO CT (STOCKPORT) LIMITED
ANNUAL REPORT AND UNAUDITED FINANCIAL STATEMENTS
FOR THE YEAR ENDED 31 MARCH 2020

EASY-GO CT (STOCKPORT) LIMITED

LEGAL AND ADMINISTRATIVE INFORMATION

Trustees	G M Wong D Barrett J F Kenny (Chairman)
Charity number	1142212
Company number	03285361
Registered office	Oak House Newby Road Industrial Estate Hazel Grove Stockport Cheshire SK7 5DA
Independent examiner	Azets Alpha House 4 Greek Street Stockport Cheshire SK3 8AB

EASY-GO CT (STOCKPORT) LIMITED

CONTENTS

	Page
Chairman's report	1 - 2
Trustees' report	3 - 5
Independent examiner's report	6 - 7
Statement of financial activities	8
Balance sheet	9
Notes to the accounts	10 - 17

EASY-GO CT (STOCKPORT) LIMITED

CHAIRMAN'S REPORT

FOR THE YEAR ENDED 31 MARCH 2020

Although this report covers the period of March 2019 – 20 I cannot ignore the events of this unprecedented year. It would be an understatement to say that a lot has happened since our last AGM, and while the focus of this meeting will be on our activity during 2019 and early 2020, it is only appropriate that I make some reference to the impact of the global pandemic which has changed so much in our lives in the last 9 months, and has had far reaching consequences not just our organisation but across all sector of the community. However, the challenges of Covid-19 have been met with professionalism & caution by everyone involved in the organisation and although things have been affected beyond recognition and we have had to adapt to the ever changing situation everyone has got stuck in which has allowed the organisation to carry on (almost) as normal. I wish to thank everyone for their diligence & fortitude through these extremely difficult and challenging times.

The Management Committee has continued to function & hold regular meetings via the 'wonderful world' of Zoom and we are all slowly but surely getting use to a new way of working as a committee.

However back to the focus of this report which a review of the year 2019 - 20

Activities covering the period of the report

At the beginning of April 2019, we started to look for a new vehicle maintenance supplier, this was due to the closure of Woodford Road Motors. Following exploratory visits to several local garages, we settled on Pinnacle Motors, based on Lancashire Hill.

So far, they have proved to be are very competent, slightly more expensive, but cheaper in the long run, not having to return vehicles after their initial repairs, resulting in less management time.

Just what we need with an aging fleet. TLC!!

Following the increase in the minimum wage, which obviously had an impact on operational costs, a re-negotiation of the cost of operating our Special Educational Needs & Disabilities (SEND) contracts, successfully took place.

A transport review on SEND transport and Community Transport in Stockport, commissioned by Stockport Metropolitan Borough Council, showed Easy Go Community Transport in a very good light, praising our policies, procedures, training, and also the social value offered to people of Stockport.

Both Easy Go Community Transport and Stockport Car Scheme were held in high esteem by the TAS partnership, who wrote the report, they cautioned any reduction in funding, in what they viewed as valuable resources for the borough.

There was also a memorable visit from Catherine Perez, the Policy Lead on Buses Taxis and Community Transport at the Department for Transport (DFT). This visit was arranged through the Community Transport Association (CTA), who wanted to show Catherine what a real Community Transport Organisation does and the invaluable service it provides.

Catherine went out on an accessible vehicle and picked up a couple of our members taking them to various locations within the borough.

Our driver operated the passenger lift and explained how the safety restraint equipment worked, Carl then gave a presentation to her and the Community Transport Association representative.

The feedback from the day was very positive, Catherine was very impressed with our organisation and said it gave her a real insight into what CT's do.

As previously highlighted in my report last year we also had the ongoing stress created by the Section 19 debacle and the subsequent judicial review which, although not conclusive has taken some of the pressure off.

Finally, as mention in my opening paragraphs, the Corona virus pandemic has affected our performance figures and income generation.

Although lockdown started in March 20, our performances figure has been dropping since last Christmas.

Fundraising and Funding

As has been the case for a number of years awarding bodies are still reluctant to give long-term contracts, which are essential for an organisation such as easy go CT to plan and survive and therefore, as ever, we must be cautious of becoming dependent on any one contract.

However, the contracts that the organisation retains, provides a much needed steady and reliable income.

There are many organisations and partners that we need to thank for their continuing support.

These included: -

Azets

Central Manchester Foundation Trust NHS (CMFT)

Department for Transport

Environ Properties

Transport for Greater Manchester (TfGM)

Peninsula

Wellbeing and Independence Network (WIN)

Stockport Car Scheme (SCS)

Stockport MBC (SEND)

Pinnacle Motors

Community Transport Association

I and the management committee are extremely grateful to all our staff - paid drivers, passenger assistance, and office staff for their seamlessly ever ending hard work, commitment, and dedication to the organisation all of which has a massive positive impact on the many people that use our service.

A special thanks, as ever, to our Management Team for the leadership, time, and dedication to keep the service going in the most extraordinary times.

Finally, my thanks to my colleagues on the Management Committee for their support, time, and commitment to the organisations and myself throughout the year.

I know that we will be facing even more challenging times ahead, but I am sure that we will continue to provide a high quality, vital, service to many people and resilience, enthusiasm, and commitment of everyone involved, in easy go Community Transport, makes me extremely proud to be the Chair.

EASY-GO CT (STOCKPORT) LIMITED

TRUSTEES' REPORT (INCLUDING DIRECTORS' REPORT)

FOR THE YEAR ENDED 31 MARCH 2020

The trustees present their report and accounts for the year ended 31 March 2020.

Easy-Go CT (Stockport) Limited is a registered charity (No. 1142212) and a company (No. 03285361) limited by membership guarantee. Its registered office is shown on the legal and administrative information page, the charity's activities were previously reported under charity number 1013459.

The accounts have been prepared in accordance with the accounting policies set out in note 1 to the accounts and comply with the charity's governing document, set out on page 4, the Companies Act 2006 and "Accounting and Reporting by Charities: Statement of Recommended Practice applicable to charities preparing their accounts in accordance with the Financial Reporting Standard applicable in the UK and Republic of Ireland (FRS 102)" (as amended for accounting periods commencing from 1 January 2016).

Objectives and activities

The object of the Company is to provide a community transport service for the inhabitants of Stockport and the surrounding area who are in need of such a service because of age, sickness or disability (mental or physical), or poverty, or because of a lack of availability of adequate public passenger services.

The public benefit of the charity is achieved by providing personal and group travel service for disabled residents of Stockport using vehicles specifically adapted for this purpose.

In setting out the aims, objectives and planning our activities the trustees have given careful consideration to the Charity Commission's general guidance on public benefit.

The trustees have paid due regard to guidance issued by the Charity Commission in deciding what activities the charity should undertake.

The charity's policy is to consult and discuss with employees, through unions, staff councils and at meetings, matters likely to affect employees' interests.

Information of matters of concern to employees is given through information bulletins and reports which seek to achieve a common awareness on the part of all employees of the financial and economic factors affecting the group's performance.

Applications for employment by disabled persons are always fully considered, bearing in mind the aptitudes of the applicant concerned. In the event of members of staff becoming disabled, every effort is made to ensure that their employment within the charity continues and that the appropriate training is arranged. It is the policy of the charity that the training, career development and promotion of disabled persons should, as far as possible, be identical to that of other employees.

Financial review

During the period, the total incoming resources were £557,745 as compared to £505,693 in the previous period.

Total resources expended in the period were £613,798 as compared to £557,926 in the previous period.

The deficit for the year was £56,053 as compared to £52,233 in the prior period.

It is the policy of the charity that unrestricted funds which have not been designated for a specific use should be maintained at a level equivalent to between three and six month's expenditure. The trustees consider that reserves at this level will ensure that, in the event of a significant drop in funding, they will be able to continue the charity's current activities while consideration is given to ways in which additional funds may be raised. This level of reserves has been maintained throughout the year.

Unrestricted funds which have not been designated for a specific use are adequately stated.

EASY-GO CT (STOCKPORT) LIMITED

TRUSTEES' REPORT (CONTINUED)(INCLUDING DIRECTORS' REPORT) FOR THE YEAR ENDED 31 MARCH 2020

The trustees has assessed the major risks to which the charity is exposed, and are satisfied that systems are in place to mitigate exposure to the major risks.

Structure, governance and management

Governing Document

The charity is governed by its constitution adopted 17 August 1988 and amended 7 October 1991 and 6 July 1992. This was superceeded by the Memorandum and Articles dated 15 July 2011 and amended by a Special Resolution registered 27 September 2011.

Governing Bodies

The Board of Trustees is responsible for the overall governance of the charity.

The trustees, who are also the directors for the purpose of company law, and who served during the year were:

G M Wong

D Barrett

J F Kenny (Chairman)

Recruitment and Training of Trustees

The trustees are appointed at the Annual General Meeting. All trustees retire each year and are eligible for reappointment. Nominations are made by members of the service. Professional advisers and other appointments are appointed at the Annual General Meeting or by the management committee.

There is no formal training for the trustees, all appointed trustees are professionals or have an interest in the charity. The trustees are able to use other trustees or third party advisors if needed.

None of the trustees has any beneficial interest in the company. All of the trustees are members of the company and guarantee to contribute £1 in the event of a winding up.

The board of trustees meet a number of times throughout the year including the AGM meeting. The day to day running of the charity is the responsibility the the management team.

EASY-GO CT (STOCKPORT) LIMITED

TRUSTEES' REPORT (CONTINUED)(INCLUDING DIRECTORS' REPORT) FOR THE YEAR ENDED 31 MARCH 2020

The trustees' report was approved by the Board of Trustees.

.....
J F Kenny (Chairman)
Trustee
Dated:

EASY-GO CT (STOCKPORT) LIMITED

INDEPENDENT EXAMINER'S REPORT

TO THE TRUSTEES OF EASY-GO CT (STOCKPORT) LIMITED

I report to the trustees on my examination of the financial statements of Easy-Go CT (Stockport) Limited (the charity) for the year ended 31 March 2020.

Responsibilities and basis of report

As the trustees of the charity (and also its directors for the purposes of company law) you are responsible for the preparation of the financial statements in accordance with the requirements of the Companies Act 2006 (the 2006 Act).

Having satisfied myself that the financial statements of the charity are not required to be audited under Part 16 of the 2006 Act and are eligible for independent examination, I report in respect of my examination of the charity's financial statements carried out under section 145 of the Charities Act 2011 (the 2011 Act). In carrying out my examination I have followed all the applicable Directions given by the Charity Commission under section 145(5)(b) of the 2011 Act.

Independent examiner's statement

Since the charity's gross income exceeded £250,000 your examiner must be a member of a body listed in section 145 of the 2011 Act. I confirm that I am qualified to undertake the examination because I am a member of ICAEW, which is one of the listed bodies.

I have completed my examination. I confirm that no matters have come to my attention in connection with the examination giving me cause to believe that in any material respect:

- 1 accounting records were not kept in respect of the charity as required by section 386 of the 2006 Act; or
- 2 the financial statements do not accord with those records; or
- 3 the financial statements do not comply with the accounting requirements of section 396 of the 2006 Act other than any requirement that the accounts give a true and fair view which is not a matter considered as part of an independent examination; or
- 4 the financial statements have not been prepared in accordance with the methods and principles of the Statement of Recommended Practice for accounting and reporting by charities applicable to charities preparing their accounts in accordance with the Financial Reporting Standard applicable in the UK and Republic of Ireland (FRS 102).

I have no concerns and have come across no other matters in connection with the examination to which attention should be drawn in this report in order to enable a proper understanding of the financial statements to be reached.

Use of our report

This report is made solely to the charitable company's trustees, as a body, in accordance with Chapter 3 of Part 16 of the Companies Act 2006 and the charitable company's trustees as a body in accordance with section 154 of the Charities Act 2011. My independent examiner's work has been undertaken so that I might state to the charitable company's trustees those matters I am required to state to them in an independent examiner's report and for no other purpose. To the fullest extent permitted by law, I do not accept or assume responsibility to anyone other than the charitable company, the charitable company's members as a body and the charitable company's trustees as a body for my independent examiner's work, for this report, or for the opinions I have formed.

EASY-GO CT (STOCKPORT) LIMITED

INDEPENDENT EXAMINER'S REPORT (CONTINUED)

TO THE TRUSTEES OF EASY-GO CT (STOCKPORT) LIMITED

Jonathan Ward

Azets
Alpha House
4 Greek Street
Stockport
Cheshire
SK3 8AB

Dated:

EASY-GO CT (STOCKPORT) LIMITED

STATEMENT OF FINANCIAL ACTIVITIES INCLUDING INCOME AND EXPENDITURE ACCOUNT FOR THE YEAR ENDED 31 MARCH 2020

	Notes	2020 £	2019 £
<u>Income and endowments from:</u>			
Donations and legacies	3	36,000	38,000
Charitable activities	4	504,766	453,945
Investments	5	433	363
Other income	6	16,546	13,385
		<hr/>	<hr/>
Total income		557,745	505,693
		<hr/>	<hr/>
<u>Expenditure on:</u>			
Charitable activities	7	613,798	557,926
		<hr/>	<hr/>
Net expenditure for the year/ Net movement in funds		(56,053)	(52,233)
Fund balances at 1 April 2019		118,410	170,643
		<hr/>	<hr/>
Fund balances at 31 March 2020		62,357	118,410
		<hr/>	<hr/>

The statement of financial activities includes all gains and losses recognised in the year.

All income and expenditure derive from continuing activities.

The statement of financial activities also complies with the requirements for an income and expenditure account under the Companies Act 2006.

EASY-GO CT (STOCKPORT) LIMITED

BALANCE SHEET

AS AT 31 MARCH 2020

	Notes	2020 £	£	2019 £	£
Fixed assets					
Tangible assets	12		50,972		83,655
Investments	13		1		1
			<u>50,973</u>		<u>83,656</u>
Current assets					
Debtors	14	62,764		45,747	
Cash at bank and in hand		126,800		90,294	
		<u>189,564</u>		<u>136,041</u>	
Creditors: amounts falling due within one year	15	(178,180)		(101,287)	
Net current assets			<u>11,384</u>		<u>34,754</u>
Total assets less current liabilities			<u>62,357</u>		<u>118,410</u>
Income funds					
Unrestricted funds			<u>62,357</u>		<u>118,410</u>
			<u>62,357</u>		<u>118,410</u>

The company is entitled to the exemption from the audit requirement contained in section 477 of the Companies Act 2006, for the year ended 31 March 2020.

The trustees acknowledge their responsibilities for ensuring that the charity keeps accounting records which comply with section 386 of the Act and for preparing financial statements which give a true and fair view of the state of affairs of the company as at the end of the financial year and of its incoming resources and application of resources, including its income and expenditure, for the financial year in accordance with the requirements of sections 394 and 395 and which otherwise comply with the requirements of the Companies Act 2006 relating to financial statements, so far as applicable to the company.

The members have not required the company to obtain an audit of its financial statements for the year in question in accordance with section 476.

These financial statements have been prepared in accordance with the provisions applicable to companies subject to the small companies regime.

The financial statements were approved by the Trustees on

.....
G M Wong
Trustee

.....
J F Kenny (Chairman)
Trustee

Company Registration No. 03285361

EASY-GO CT (STOCKPORT) LIMITED

NOTES TO THE FINANCIAL STATEMENTS

FOR THE YEAR ENDED 31 MARCH 2020

1 Accounting policies

Charity information

Easy-Go CT (Stockport) Limited is a private company limited by guarantee incorporated in England and Wales. The registered office is Oak House, Newby Road Industrial Estate, Hazel Grove, Stockport, Cheshire, SK7 5DA.

1.1 Accounting convention

The accounts have been prepared in accordance with the charity's governing document, set out on page 4, the Companies Act 2006 and "Accounting and Reporting by Charities: Statement of Recommended Practice applicable to charities preparing their accounts in accordance with the Financial Reporting Standard applicable in the UK and Republic of Ireland (FRS 102)" (as amended for accounting periods commencing from 1 January 2016). The charity is a Public Benefit Entity as defined by FRS 102.

The charity has taken advantage of the provisions in the SORP for charities applying FRS 102 Update Bulletin 1 not to prepare a Statement of Cash Flows.

The financial statements are prepared in sterling, which is the functional currency of the charity. Monetary amounts in these financial statements are rounded to the nearest £.

The accounts have been prepared under the historical cost convention. The principal accounting policies adopted are set out below.

1.2 Going concern

At the time of approving the financial statements, the Trustee's have a reasonable expectation that the charity has adequate resources to continue in operational existence for the foreseeable future. However at this time the full impact of the Corona virus pandemic on the UK and Global economy is uncertain and the effect, both immediate and long term, this may have on the charity, its recipients and donors is unknown.

1.3 Charitable funds

Unrestricted funds are available for use at the discretion of the trustees in furtherance of their charitable objectives.

Restricted funds are subject to specific conditions by donors as to how they may be used. The purposes and uses of the restricted funds are set out in the notes to the financial statements.

Endowment funds are subject to specific conditions by donors that the capital must be maintained by the charity.

1.4 Incoming resources

Income is recognised when the charity is legally entitled to it after any performance conditions have been met, the amounts can be measured reliably, and it is probable that income will be received.

Cash donations are recognised on receipt. Other donations are recognised once the charity has been notified of the donation, unless performance conditions require deferral of the amount. Income tax recoverable in relation to donations received under Gift Aid or deeds of covenant is recognised at the time of the donation.

Turnover is measured at the fair value of the consideration received or receivable and represents amounts receivable for services provided in the normal course of business.

EASY-GO CT (STOCKPORT) LIMITED

NOTES TO THE FINANCIAL STATEMENTS (CONTINUED) FOR THE YEAR ENDED 31 MARCH 2020

1 Accounting policies

(Continued)

1.5 Resources expended

Resources expended are included in the statement of financial activities on an accruals basis.

Charitable expenditure comprises those costs incurred by the charity in the delivery of its activities and services for its beneficiaries. It includes both costs that can be allocated directly to such activities and those costs of an indirect nature necessary to support them.

Governance costs include those costs associated with meeting the constitutional and statutory requirements of the charity and include the audit fees and costs linked to the strategic management of the charity.

All costs are allocated between the expenditure categories in the Statement of Financial Activities (SOFA) on a basis designed to reflect the use of the resource. Costs relating to a particular activity are allocated directly whilst others are apportioned on an appropriate basis.

1.6 Tangible fixed assets

Tangible fixed assets are initially measured at cost and subsequently measured at cost or valuation, net of depreciation and any impairment losses.

(a) Motor vehicles are stated at cost. Depreciation is provided at 20% per annum on a straight line basis, in order to write off each asset over its useful life.

(b) Fixtures, fittings and equipment are stated at cost. Depreciation is provided at 10% per annum on a straight line basis, in order to write off each asset over its useful life.

(c) Computer equipment is stated at cost. Depreciation is provided at 33% per annum on a straight line basis, in order to write off each asset over its useful life.

The gain or loss arising on the disposal of an asset is determined as the difference between the sale proceeds and the carrying value of the asset, and is recognised in net income/(expenditure) for the year.

1.7 Impairment of fixed assets

At each reporting end date, the charity reviews the carrying amounts of its tangible assets to determine whether there is any indication that those assets have suffered an impairment loss. If any such indication exists, the recoverable amount of the asset is estimated in order to determine the extent of the impairment loss (if any).

1.8 Cash and cash equivalents

Cash and cash equivalents include cash in hand, deposits held at call with banks, other short-term liquid investments with original maturities of three months or less, and bank overdrafts. Bank overdrafts are shown within borrowings in current liabilities.

1.9 Financial instruments

The charity has elected to apply the provisions of Section 11 'Basic Financial Instruments' and Section 12 'Other Financial Instruments Issues' of FRS 102 to all of its financial instruments.

Financial instruments are recognised in the charity's balance sheet when the charity becomes party to the contractual provisions of the instrument.

Financial assets and liabilities are offset, with the net amounts presented in the financial statements, when there is a legally enforceable right to set off the recognised amounts and there is an intention to settle on a net basis or to realise the asset and settle the liability simultaneously.

EASY-GO CT (STOCKPORT) LIMITED

NOTES TO THE FINANCIAL STATEMENTS (CONTINUED) FOR THE YEAR ENDED 31 MARCH 2020

1 Accounting policies

(Continued)

Basic financial assets

Basic financial assets, which include debtors and cash and bank balances, are initially measured at transaction price including transaction costs and are subsequently carried at amortised cost using the effective interest method unless the arrangement constitutes a financing transaction, where the transaction is measured at the present value of the future receipts discounted at a market rate of interest. Financial assets classified as receivable within one year are not amortised.

Basic financial liabilities

Basic financial liabilities, including creditors and bank loans are initially recognised at transaction price unless the arrangement constitutes a financing transaction, where the debt instrument is measured at the present value of the future payments discounted at a market rate of interest. Financial liabilities classified as payable within one year are not amortised.

Debt instruments are subsequently carried at amortised cost, using the effective interest rate method.

Trade creditors are obligations to pay for goods or services that have been acquired in the ordinary course of operations from suppliers. Amounts payable are classified as current liabilities if payment is due within one year or less. If not, they are presented as non-current liabilities. Trade creditors are recognised initially at transaction price and subsequently measured at amortised cost using the effective interest method.

Derecognition of financial liabilities

Financial liabilities are derecognised when the charity's contractual obligations expire or are discharged or cancelled.

1.10 Employee benefits

The cost of any unused holiday entitlement is recognised in the period in which the employee's services are received.

Termination benefits are recognised immediately as an expense when the charity is demonstrably committed to terminate the employment of an employee or to provide termination benefits.

1.11 Expenditure

All expenditure is accounted for on an accruals basis.

2 Critical accounting estimates and judgements

In the application of the charity's accounting policies, the trustees are required to make judgements, estimates and assumptions about the carrying amount of assets and liabilities that are not readily apparent from other sources. The estimates and associated assumptions are based on historical experience and other factors that are considered to be relevant. Actual results may differ from these estimates.

The estimates and underlying assumptions are reviewed on an ongoing basis. Revisions to accounting estimates are recognised in the period in which the estimate is revised where the revision affects only that period, or in the period of the revision and future periods where the revision affects both current and future periods.

EASY-GO CT (STOCKPORT) LIMITED

NOTES TO THE FINANCIAL STATEMENTS (CONTINUED) FOR THE YEAR ENDED 31 MARCH 2020

3 Donations and legacies

	2020	2019
	£	£
Grant income	36,000	38,000

4 Charitable activities

	Vehicle hire and bus service contracts 2020 £	Vehicle hire and bus service contracts 2019 £
Sales within charitable activities	504,766	448,130
Other income	-	5,815
	504,766	453,945

5 Investments

	Unrestricted funds 2020 £	Unrestricted funds 2019 £
Interest receivable	433	363

EASY-GO CT (STOCKPORT) LIMITED

NOTES TO THE FINANCIAL STATEMENTS (CONTINUED) FOR THE YEAR ENDED 31 MARCH 2020

6 Other income

	2020	2019
	£	£
Other income	16,546	13,385

7 Charitable activities

	2020	2019
	£	£
Staff costs	394,143	345,321
Depreciation and impairment	36,849	33,166
Motor expenses	138,756	124,752
Consultancy fees	7,403	6,380
	577,151	509,619

Share of support costs (see note 8)	34,697	46,583
Share of governance costs (see note 8)	1,950	1,724
	613,798	557,926

Analysis by fund

Unrestricted funds	613,798	
	613,798	

For the year ended 31 March 2019

Unrestricted funds		557,926
		557,926

EASY-GO CT (STOCKPORT) LIMITED

NOTES TO THE FINANCIAL STATEMENTS (CONTINUED) FOR THE YEAR ENDED 31 MARCH 2020

8 Support costs

	Support costs	Governance costs	2020	2019	Basis of allocation
	£	£	£	£	
Rent	18,000	-	18,000	18,000	
Office expenses	11,178	-	11,178	14,541	
Sundry	6,416	-	6,416	4,142	
Insurance	2,542	-	2,542	2,238	
Subscriptions	461	-	461	457	
Staff training	161	-	161	487	
Bank charges	105	-	105	98	
Bad debts	(4,343)	-	(4,343)	6,367	
Clothing	85	-	85	51	
Refreshments and volunteer expenses	92	-	92	202	
Accountancy fees	-	1,950	1,950	1,700	Governance
AGM costs	-	-	-	24	Governance
	<u>34,697</u>	<u>1,950</u>	<u>36,647</u>	<u>48,307</u>	

9 Trustees

None of the trustees (or any persons connected with them) received any remuneration during the year.

10 Employees

Number of employees

The average monthly number of employees during the year was:

	2020 Number	2019 Number
Drivers	19	18
Passenger assistants	13	12
Administration	4	3
	<u>36</u>	<u>33</u>

Employment costs

	2020 £	2019 £
Wages and salaries	<u>394,143</u>	<u>345,321</u>

There were no employees whose annual remuneration was £60,000 or more.

EASY-GO CT (STOCKPORT) LIMITED

NOTES TO THE FINANCIAL STATEMENTS (CONTINUED) FOR THE YEAR ENDED 31 MARCH 2020

11 Taxation

Easy -Go CT (Stockport) Limited is a registered charity, no provision is made for either current or deferred taxation.

12 Tangible fixed assets

	Fixtures, fittings & equipment	Motor vehicles	Total
	£	£	£
Cost			
At 1 April 2019	4,596	338,233	342,829
Additions	-	4,167	4,167
At 31 March 2020	4,596	342,400	346,996
Depreciation and impairment			
At 1 April 2019	3,064	256,110	259,174
Depreciation charged in the year	1,532	35,318	36,850
At 31 March 2020	4,596	291,428	296,024
Carrying amount			
At 31 March 2020	-	50,972	50,972
At 31 March 2019	1,532	82,123	83,655

13 Fixed asset investments

	Unlisted investments
	£
Cost or valuation	
At 1 April 2019 & 31 March 2020	1
Carrying amount	
At 31 March 2020	1
At 31 March 2019	1

EASY-GO CT (STOCKPORT) LIMITED

NOTES TO THE FINANCIAL STATEMENTS (CONTINUED) FOR THE YEAR ENDED 31 MARCH 2020

14 Debtors

	2020 £	2019 £
Amounts falling due within one year:		
Trade debtors	45,152	31,717
Other debtors	8,293	5,802
Prepayments and accrued income	9,319	8,228
	<u>62,764</u>	<u>45,747</u>

15 Creditors: amounts falling due within one year

	2020 £	2019 £
Trade creditors	79,594	99,787
Accruals and deferred income	98,586	1,500
	<u>178,180</u>	<u>101,287</u>

16 Related party transactions

Remuneration of key management personnel

The remuneration of key management personnel is as follows.

	2020 £	2019 £
Aggregate compensation	<u>56,237</u>	<u>56,144</u>

Transactions with related parties

During the year the charity entered into the following transactions with related parties:

During the year Easy-Go CT (Stockport) Limited paid Tour Media £1,000 (2019 - £1,000) for web site support. Tour Media is controlled by Mr D Jackson who is the son of the general manager Mr C Schoolden.

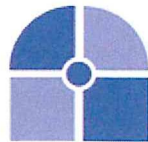
Acknowledgements



Transport for
Greater Manchester



BOOTH AINSWORTH LLP
Chartered Accountants



GMCVO



STOCKPORT
METROPOLITAN BOROUGH COUNCIL



Community
Transport
Association



MOT TESTING
STATION



PINNACLE
MOTOR ENGINEERING



Central Manchester University Hospitals
NHS Foundation Trust

