

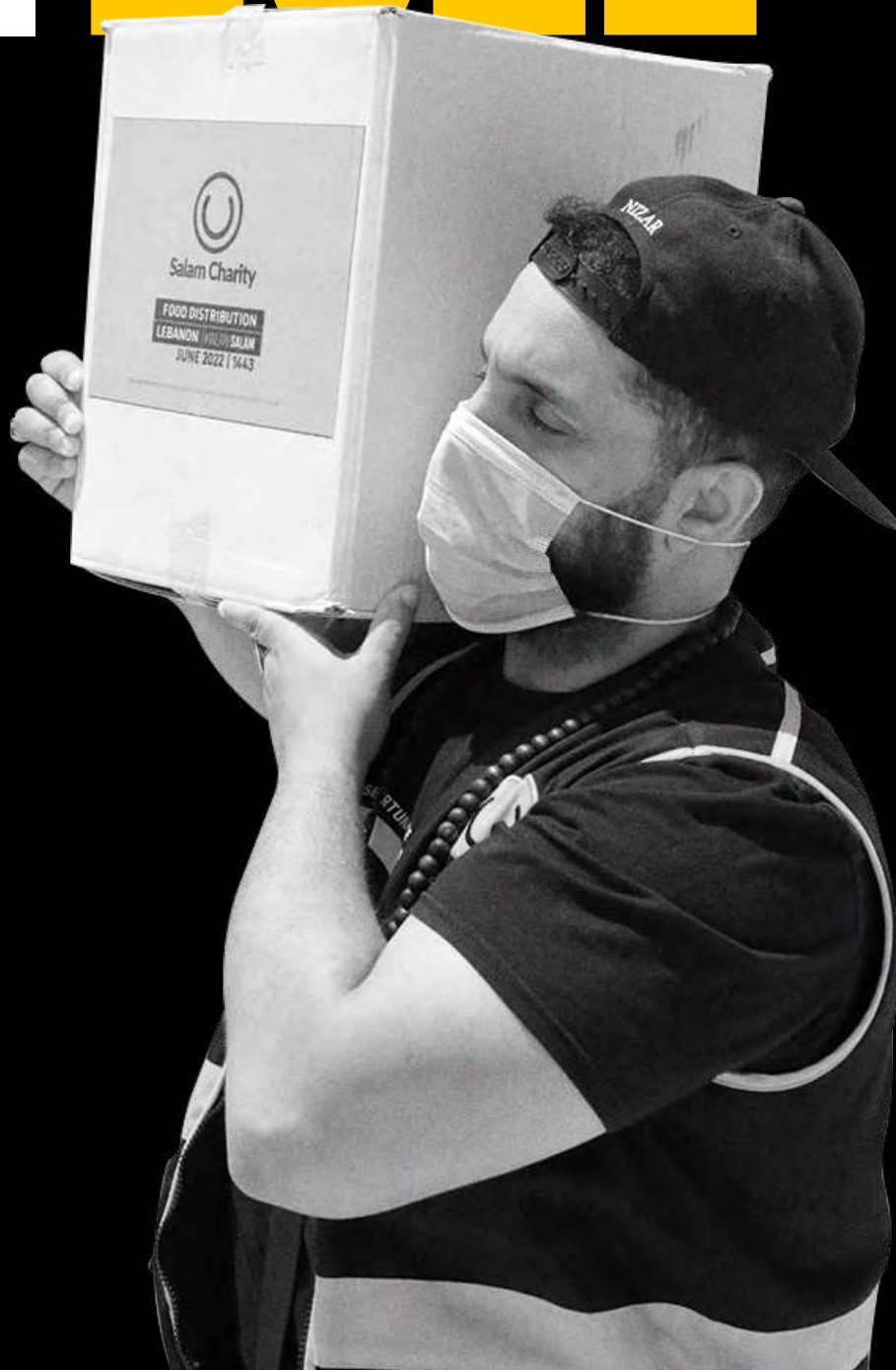
ANNUAL REPORT

2021

2022



Salam Charity



 @salamcharityuk
 Salam Charity
 @salamcharityuk

483 GREEN Lanes
London
N13 4BS

020 8090 4090

Charity No. 1142191

The text of this document (this excludes, where present, Salam Charity and partner agency logos) may not be reproduced without the express permission of Salam Charity and provided that it is reproduced accurately and not in a misleading context. The material must be acknowledged as Salam Charity copyright and the document title specified. Photographs copyright of Salam Charity except where otherwise identified. Permission from copyright holders must be sought before any photographs are reproduced.

CONTENTS

TRUSTEES' ANNUAL REPORT

PART ONE: VALUES AND STRATEGY

A Mission to Save Lives	3
Income and Expenditure	5
Foreword from the Chair	7
One Day at a Time	9
100% Donation Policy	11
Our Strategic Plan	15
Delivering Aid	17
Serving with Passion	19
#Unfiltered	21

PART TWO: PEOPLE AND PROJECTS

Essential Medical Care	23
Emergency Medical Care	25
Maternal & Neo-natal care	27
Emergency Report: Pakistan Floods	29
WASH	31
Winter Survival	33
Food Security	35
Qurbani	37
Shelter	39
Education for the Future	41
Sponsorships	43
Sustainable Incomes	45

PART THREE: FINANCIALS

	47
--	----

PART ONE:

VALUES AND STRATEGY



“ I have nothing left except my life. ”

Khudeza Begum, Sylhet, Bangladesh (talking to the BBC)

A MISSION TO SAVE LIVES

20

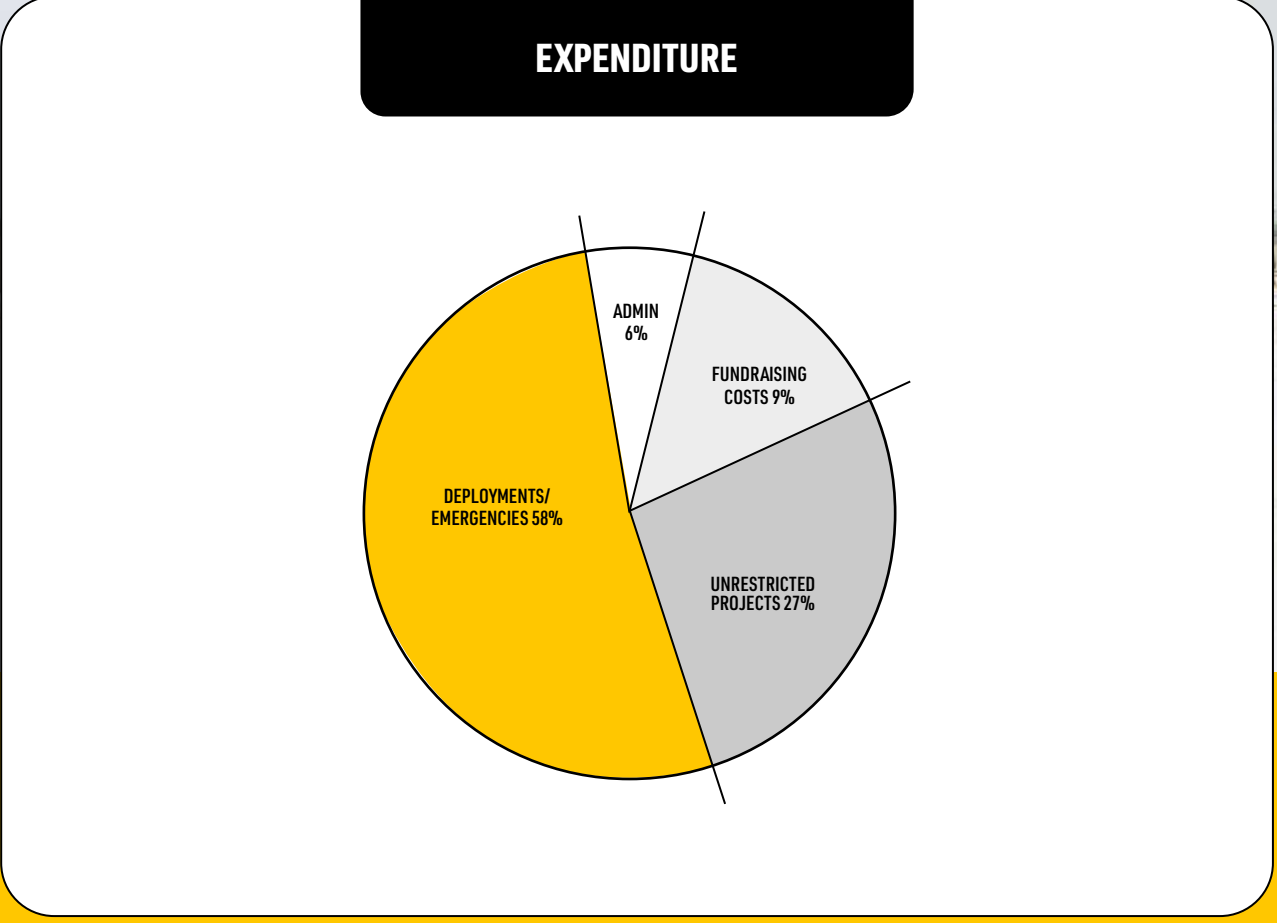
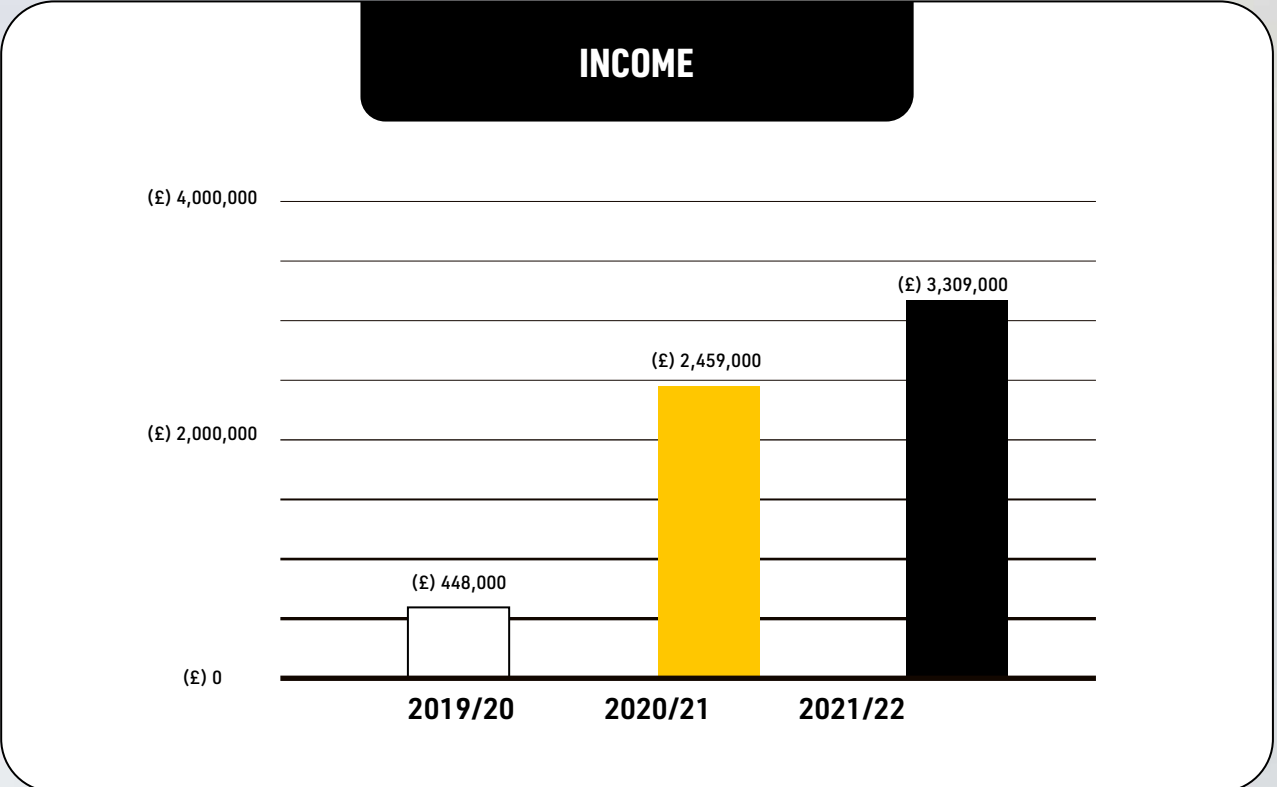
- WE WILL ERADICATE POVERTY**
by funding sustainable initiatives
- WE WILL CHANGE THE SYSTEM**
by empowering women and children

30

- WE WILL FIGHT DISEASE**
with healthcare, vaccination programmes, sanitation, and clean water
- WE WILL OPERATE WITH EQUALITY**
openness, and transparency

Type text here

INCOME & EXPENDITURE AT A GLANCE



2021/2022
GROSS INCOME
TOTAL EXPENDITURE

FOREWORD FROM THE CHAIR



Sharif H. Banna
Chairman

A stylized, handwritten signature in blue ink, appearing to read 'Sh H Banna'.

“It is our privilege to be able to continue
to serve those who need us the most”

As we finally emerge from the global challenges brought on by the COVID-19 pandemic, the likes of which we may never experience again in our lifetime, it makes me proud that we were able to continue to help thousands of people around the world through the hard work and dedication of the team and volunteers at Salam Charity but most importantly through our valued donors who answered the call of our fellow brothers and sisters in need.

This year, we have extended our work to many more countries and have developed programmes and projects that tackle poverty and hardship in new and innovative ways with a key focus on education and sustainability.

In the refugee camps of Lebanon, more than half a million school-aged children are struggling to obtain an education. And 30% of them have never been to school.* There are several reasons for these shocking statistics including access to education, legal status, travel costs, and the increase of child labour to support the family. To address this issue, we created a groundbreaking project designed to support these marginalised children who have fallen through the cracks of the education system. Our innovative Tent of Dreams project provides these children with essential life skills and prepares them for integration into the Lebanese education system.

Our work focuses on sustainable solutions to age old problems that is why we are actively engaged in diverse projects across countries such as Bangladesh, Pakistan, Uganda, and Ghana. In collaboration with local communities and organisations, we promote sustainable animal farming programmes, empowering individuals to secure their livelihood while fostering food security and environmental sustainability. Furthermore, our sewing courses teach valuable vocational skills to widows in rural Bangladesh, unlocking economic independence and self-sufficiency. Our comprehensive training programmes aim to enhance employability and encourage entrepreneurship in disadvantaged communities.

To ensure that our work makes the greatest impact possible, we have designed our initiatives to align closely with the United Nations' Sustainable Development Goals, particularly Goal 4: Quality Education, Goal 8: Decent Work and Economic Growth, and Goal 12: Responsible Consumption and Production. By addressing the multifaceted challenges faced by communities globally, we strive to create a more sustainable and inclusive future.

As we finally get back to normality after a tumultuous couple of years, it is our privilege to be able to continue to serve those who need us the most.

Sharif H. Banna
Chairman

*<https://www.unhcr.org/lb/education>

ONE DAY AT A TIME

LEBANON

67,900 LOAVES OF
BREAD DISTRIBUTED
295 ORPHAN SPONSORED

PAKISTAN

50 HONEY-BEE
COURSES COMPLETED

UGANDA

30,200 MEALS
PROVIDED

BANGLADESH

MEDICAL TREATMENT
FOR 9,600 PEOPLE

GHANA

1,560 LITRES OF SAFE
WATER SUPPLIED

TANZANIA

399,600 MEALS
SUPPLIED

INDONESIA

21 SHELTERS
REHABILITATED

DOES SALAM CHARITY USE A 100% DONATION POLICY?

When you want to make donations to an Islamic charity, '100% donation policy' might be one of the first things that you search for. And yes - it's something that we have considered - and you might think we'd be striving towards it.

But here's the thing. We just don't believe that a 100% donation policy serves our beneficiaries, or our supporters. **Why not?**

1. OUR CHARITABLE WORK INCURS NECESSARY COSTS

Since 2011, Salam Charity has helped millions of people in more than 10 countries. Our teams work in remote regions. They sometimes face extra challenges such as conflict or natural disasters. A 100% donation policy would mean that every single penny donated goes directly to the people in need. It wouldn't cover essential costs like:



Needs assessments (where our teams visit regions to identify places where we're needed to relieve suffering).



Salaries for local and national staff (whose work enables us to plan projects, distribute aid, and manage admin costs helping to keep these low).



Fuel for our vehicles (to ensure that the goods purchased by your money reaches the right people).



Evaluation of our charitable efforts (for instance, producing our Annual and Mid-year Reports, which summarise the way we've used your donations).



Renting local offices (as bases for our teams on the ground).

All of these costs come under the title of 'administration costs' - but you can see that all are absolutely essential to delivering your donations to vulnerable people.

2. 15P PER POUND HELPS US TO MAKE MORE MONEY

For every £1 donated to Salam Charity, 6p is allocated to cover administrative costs, and 9p is allocated to fundraising. 85% of your donation is spent on aid for vulnerable people. But does that mean that you're wasting 15p per pound? No! That 15p is invested in our efforts to maximise the impact of your donation.

Here's how we split it:

6p goes into Salam Charity's administration fund. 9p supports our fundraising, including the website and social media. This part of our work means we can reach more supporters, raise more money, and - in fact - make your donation go so much further!

JAWAD'S STORY

In 2023 our volunteers met a family with a toddler called Jawad. He was suffering with a life-threatening cyst on his kidney. Isolated in a refugee camp, the family had no access to healthcare. Using social media, we were able to share videos of this family - and our UK staff set up a website to accept donations. Within days, our campaign had funded Jawad's essential surgery... and raised surplus funds for others in the refugee camp.

Since 2011, your generous donations have transformed thousands of lives. We deeply appreciate your support, and we are proud to remain completely transparent. Salam Charity is committed to being fully accountable for every penny spent.

3. WE'RE PLANNING FOR A BRIGHTER FUTURE...

As well as emergency aid and essentials (including flood relief and food parcels), Salam Charity works to build a brighter future for vulnerable people. Many of them want nothing more than an opportunity to build a life. Many of them are affected by natural disasters, or lack of healthcare facilities. These are big issues which require big thinking. Salam Charity actively advocates for these vulnerable communities, striving to bring about meaningful change.

Our administrative fees are not allocated to temporary solutions. They fund thought leadership - which produces projects such as sustainable enterprises, health centres, or solar-powered wells. This thought leadership is necessary to address the root causes of poverty and inequality worldwide. It's an important part of our work as we strive to shape the future.

4. ADMINISTRATION FEES ALIGN WITH ISLAMIC PRINCIPLES

Salam Charity appreciates the importance of adhering to Islamic principles, including the concept of donation. Zakat, one of the pillars of Islam, is a form of obligatory charity with specific guidelines about eligibility for the donor and recipient. This form of charity has a profound impact, with the potential to alleviate poverty worldwide.

When you make your Zakat donation, you hope that the profits generated will be entirely spent on charitable need. But please be assured that we're working our hardest to use your donations in the most effective way. It's also good to know that our administration costs qualify for your Zakat donation too.

In accordance with the divine wisdom of Allah (SWT), the administrators of Zakat, known as al 'amilina alayha, are among the eight categories of people eligible to receive Zakat. In other words, it is acceptable for us to use a proportion of your donation in our work distributing funds.

INDEPENDENT REVIEW OF OUR ZAKAT POLICY

To ensure adherence to the Islamic guidelines, Salam Charity has established an independent Zakat Advisory Board comprising renowned scholars. This board oversees and reviews our Zakat policy, ensuring the proper distribution of Zakat funds and upholding the integrity of this righteous practice. Your valuable donation is directed towards fulfilling this obligation in accordance with Islamic teachings.

5. WE SUPPORT OUR SUPERB STAFF AND VOLUNTEERS

Without the work of our volunteers, staff, and generous donors, we would not be able to carry out our life-saving missions.

VOLUNTEERS

Since 2011, Salam Charity has been privileged to engage generations of dedicated and committed volunteers. When volunteers generously donate their time to support our mission, Salam Charity covers their essential expenses.

STAFF

Our diligent staff members work tirelessly to keep our projects running, assist our lovely volunteers, increase awareness about our work, and account for every single penny donated by our amazing supporters.

As an organisation, it is crucial to support our employees - they're the beating heart of our mission. This, of course, includes paying fair salaries. Even though many of our staff (and others in the third sector) view their work as a calling, they still have to cover their living expenses.

We're very proud of our amazing staff. Their remarkable expertise helps us to develop and deliver ground-breaking solutions to increasingly complex global challenges. Their skills enable us to implement innovative initiatives like rainwater harvesting in Bangladesh, ensuring access to clean water for communities in need. Localisation is important, too. That is why a large number of our staff are recruited from within the areas and communities we serve. It means that we can remain sensitive and relevant to the cultural and religious requirements of our beneficiaries. By employing staff members who belong to the regions where we operate, we gain invaluable insights and can effectively reach even the most difficult-to-access areas, such as Yemen and Gaza.

YOU CAN TRUST US WITH YOUR DONATIONS

Poverty is still shockingly prevalent all over the world. That's why we're working hard to alleviate it for good.

We are committed to complete transparency regarding our administrative costs - it's an integral part of the relationship we maintain with our dedicated donors.



OUR STRATEGIC PLAN

WASH PROGRAMMES

Water, sanitation and hygiene prevent diseases, raise life expectancy, and make lives easier in many other ways.

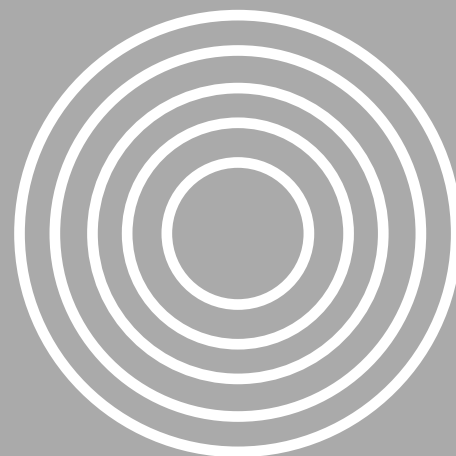


EDUCATION

Literacy and numeracy are essential life skills and open opportunities. We also deliver vocational training, which allows people to earn a living and support their families.



EMERGENCY RESPONSE



Rapid response to natural disasters and wars, including shelter rehabilitation, helps people to rebuild their lives as quickly as possible.

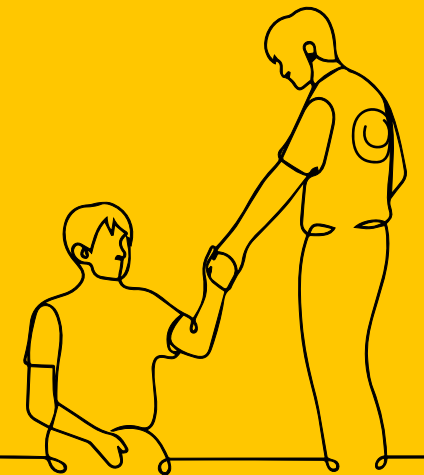
LIVELIHOOD PROJECTS



People deserve the right to earn their own living, and we run several livelihood projects – aiming to help end the culture of handouts.

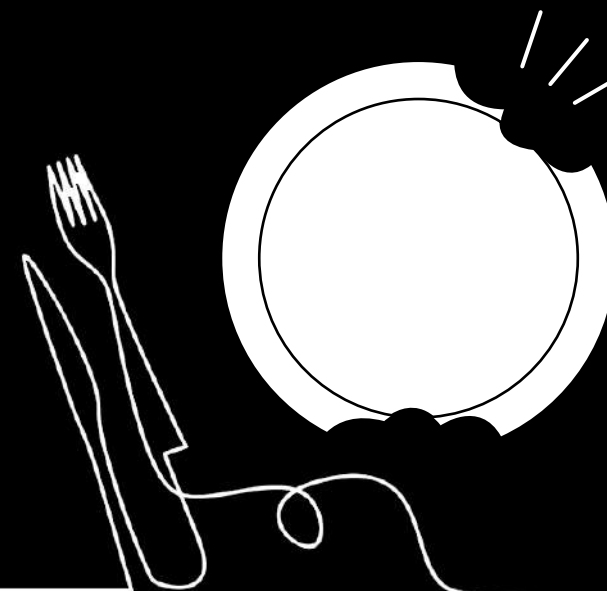
EARLY PREVENTION

By identifying the people at risk, we can help to keep them from spiralling into poverty.



FOOD SECURITY

Delivering food parcels with regularity helps people to focus on keeping their heads above water.





**DELIVERING
AID**

RESPOND

All over the world, our researchers determine where aid is most needed. They'll tell us about issues – like high levels of child labour – and they also alert us to emergencies.

REBUILD

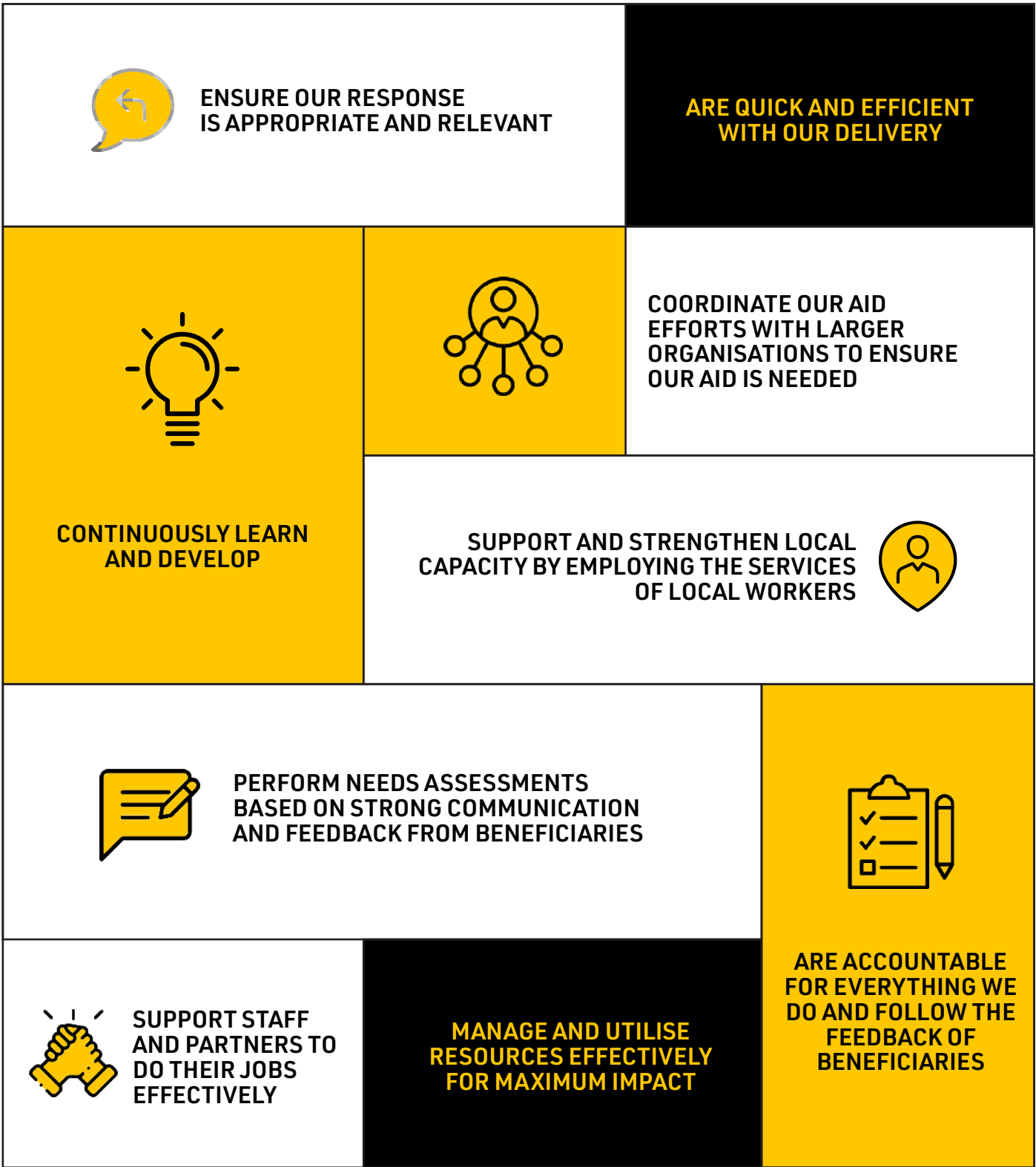
We aim to restore dignity by rebuilding lives. We want to empower people to escape from poverty and fulfil their potential.

REVISIT

Our work doesn't stop. We regularly visit and review the small communities where our team has delivered aid.



SERVING WITH COMPASSION



We deliver aid according to the CHS Alliance guidelines, making sure that our aid is relevant and reaching the right people, whilst being held accountable for all our actions.

#UNFILTERED

Salam Charity was among the first charities to recruit social media ambassadors. Our squad of **250+ influencers** now reach at least

30 MILLION PEOPLE

Worldwide sensation, **Maher Zain**, has been by Salam Charity's side for many years and continues to support our crucial work around the world.

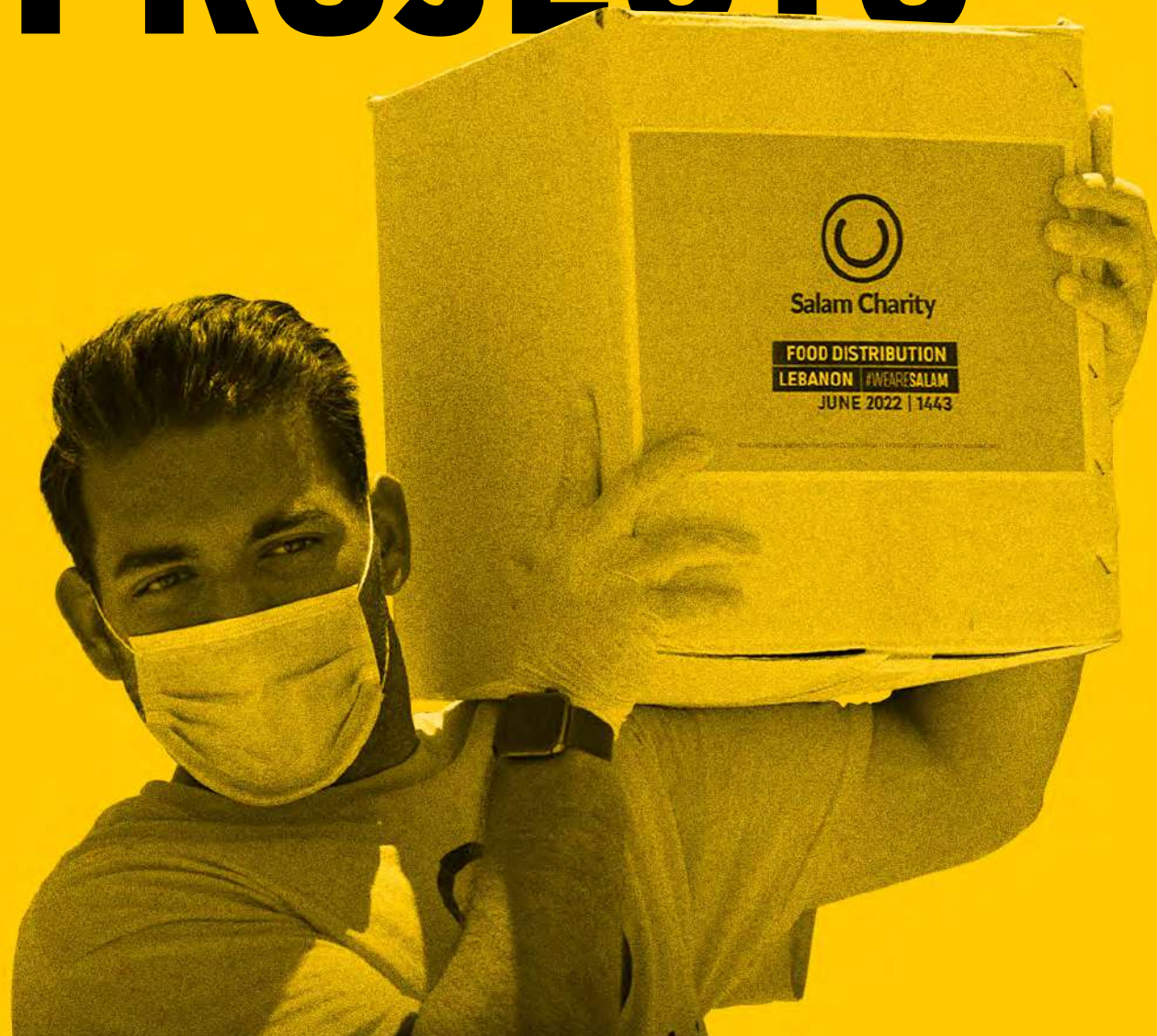
"IT IS OUR DUTY AND PRIVELEGE TO
SERVE THOSE WHO NEED US"

MAHER ZAIN



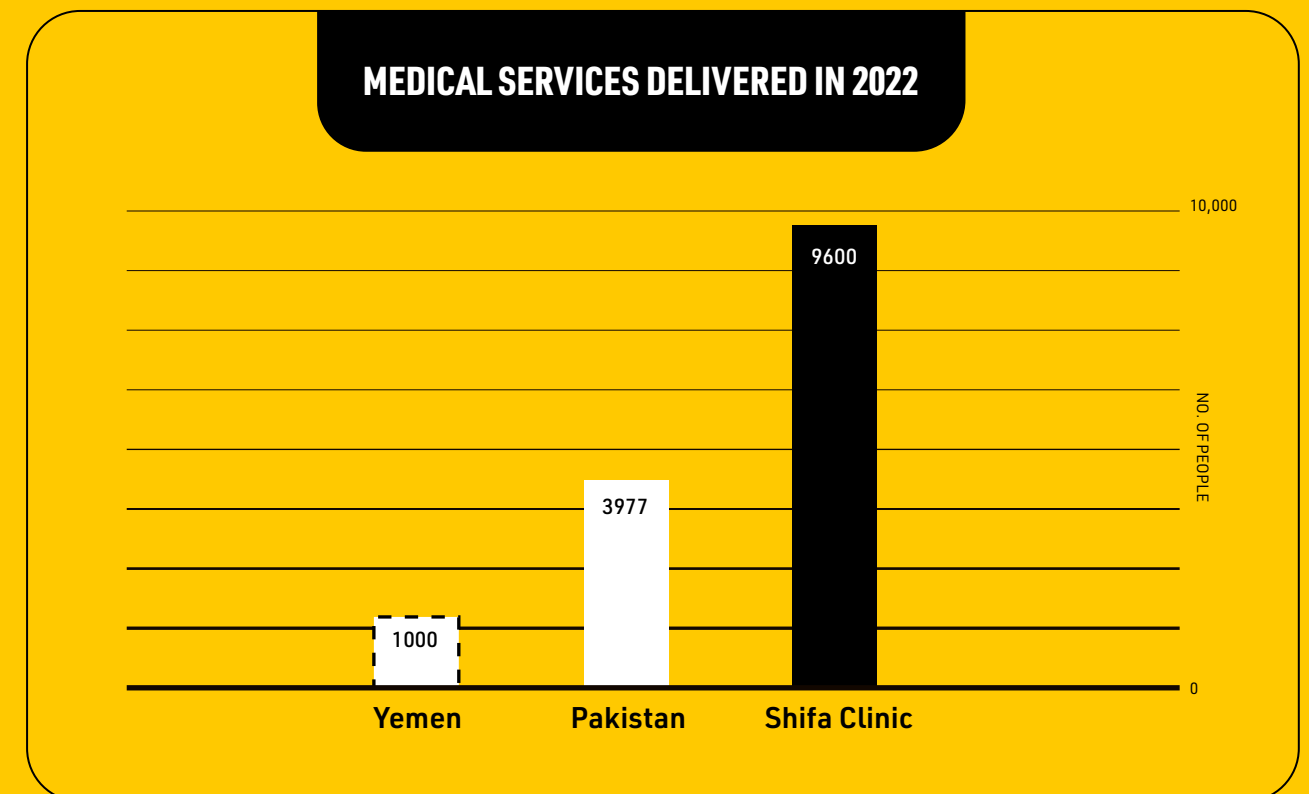
PART TWO:

PEOPLE AND PROJECTS



ESSENTIAL MEDICAL CARE

Serving 200 patients per week in Sylhet



14,497 PEOPLE TREATED BY OUR MEDICAL TEAMS THIS YEAR

EMERGENCY MEDICAL CARE

Emergencies aren't always big headlines. Sometimes our local teams discover people and families whose lives have been upturned by disaster. This year, our team in Lebanon met 3-year-old Tuline.

Tuline had been diagnosed with Neuroblastoma, cancer of the nervous system. Her family had initiated a national campaign to raise funds for her treatment – without success. Tuline had undertaken five gruelling rounds of chemotherapy, but her family couldn't pay for the emergency surgery that could save her life.

We took the story to our socials. Thanks to our generous supporters and followers, Salam Charity raised the necessary funds within 24 hours. We are so happy to report that the operation and the treatment were successful. When we visited Tuline later in the year, she was bright and bubbly – just as a three-year-old should be.

SAVING BABY TULINE



MORE EMERGENCY MEDICAL CARE THAT WE DELIVERED THIS YEAR:



3,600 people treated at our medical camp in Pakistan during the floods



1000 people given medical care in Yemen



5 wheelchairs distributed in Pakistan



2 emergency medical cases funded in Lebanon

MATERNAL & NEO-NATAL

THIS YEAR WE'VE ...

CARE SERVICES FOR MUMS AND BABIES

In many rural areas and refugee camps, maternal and neo-natal care is urgently needed. During the floods in Pakistan this summer, we established a medical clinic for mothers and babies who had been displaced from their homes. In Lebanon we continue to supply milk, nappies and sanitary towels to help women care for their babies.



297

Treated at the Mother & Baby clinic - PAKISTAN



300

Mother & Baby Hygiene Kits - PAKISTAN



300

Milk & Nappy packs - LEBANON

HELPING ALMOST 900 NEW MUMS TO CARE FOR THEIR BABIES

EMERGENCY: PAKISTAN FLOODS 2022



Have you ever walked a mile in wet shoes? Supplying dry shoes and clothes was part of our emergency operation when Pakistan was devastated by flooding in June 2022. Our partners in Pakistan travelled by boat to take food packs, clean water and hygiene kits to those in need. Floodwaters are rife with disease and our medical camp offered free treatment to help keep people safe. Our supporters were generous in their donations, enabling us to send vital support to the country.

WE DELIVERED:

TREATMENT FOR
3,600 PEOPLE
AT OUR
MEDICAL
CAMP

TREATMENT FOR
297 MOTHERS
AND CHILDREN
AT OUR SPECIALIST
CLINIC



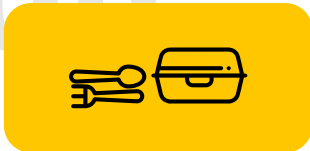
TENTS
150, 50

TARPAULINS

MOSQUITO
NETS
700



FOOD
PACKS
500



WATER
1,000L



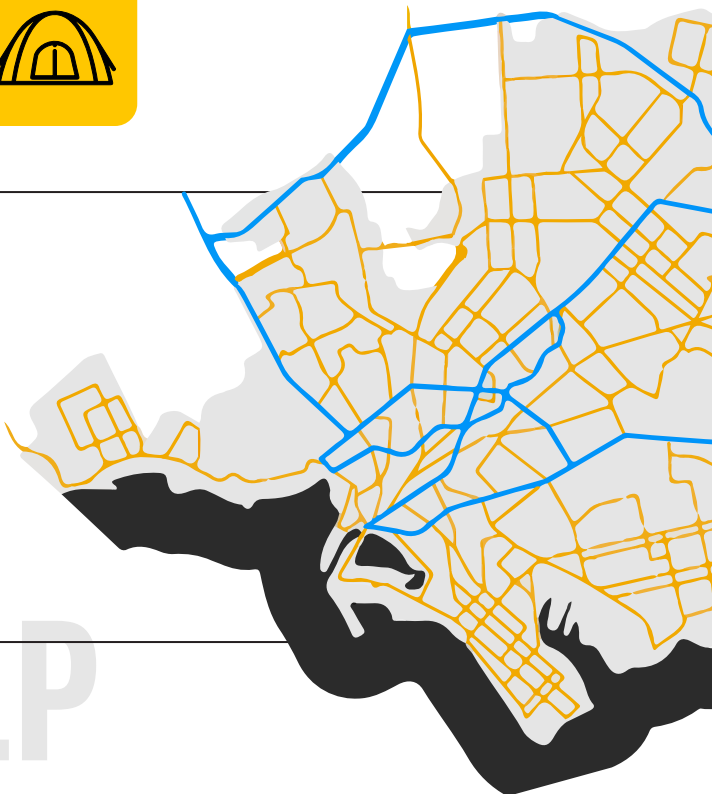
PAIRS OF
SHOES
200



HYGIENE AND
FIRST AID KITS
400



5



KARACHI
2022

WASH (Water, Sanitation and Hygiene)

Clean water for another
12,800 people

Sanitation is one of the biggest issues in vulnerable communities all over the world. Around 3 billion people live in “water stressed” areas, with many of them forced to use water supplies which are unsafe. They’re not just at high risk of disease and mortality – they’re also unable to look after their children and livestock.

Water is a key priority for us. This year we’ve built more water wells, including efficient solutions like mechanical boreholes and hand pumps – making it quicker and easier for people to fetch safe water. These projects transform the everyday lives of many, many people.

THIS YEAR WE’VE DELIVERED...



GHANA

78 water wells &
5 mechanical boreholes



PAKISTAN

31 water wells &
3 hand-pumps



YEMEN

11 water wells

... PROVIDING SAFE WATER TO 12,800 PEOPLE

**THAT’S MORE THAN
934,000 LITRES!**

HYGIENE KITS WE DELIVERED THIS YEAR

HYGIENE KITS FOR REFUGEES

From the refugee camps in Lebanon to those rendered homeless by the devastating summer floods in Pakistan, hygiene is an important issue. So this year we’ve been busy delivering supplies and information to help people stay safe.

In October 2022 a Cholera outbreak was reported in Lebanon, with 448 confirmed cases. We ran a campaign to raise funds and distribute hygiene kits. They included chlorine treatment, handwash, sanitiser, bin bags, disinfectant and laundry detergent – plus a leaflet on the disease.



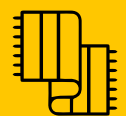
300

Hygiene kits
Lebanon

Mother & Child
kits - Pakistan



LEBANON



700
Blankets



52 Tents
Rehabilitated



63,700 Litres
of Fuel



1,640 Items
of Clothing

PAKISTAN



75 WINTER KITS

OUR WINTER CAMPAIGN CONTINUES...

Every year, our teams gear up to deliver extra supplies and help vulnerable people survive the winter.

In Lebanon, scenes in the refugee camps are heart-breaking. Many are sleeping beneath tattered tarpaulins and others cannot afford fuel to heat their families. **This year, we delivered more than 12x the amount of fuel to alleviate suffering among the Syrian refugees.**

In Pakistan, it's estimated that around 10 million displaced children are still at risk. Our teams on the ground have already **distributed 75 winter kits** to help families stay warm and safe during the winter nights.

WINTERAID



FOOD SECURITY

SUPPLYING BASICS TO HUNGRY FAMILIES

In 2022 we delivered food parcels to 8,000 families in Yemen, Bangladesh, Pakistan, Tanzania, Uganda and Indonesia. Each parcel provides around 300 meals for a family of five, giving them basic security so that they can get on with their lives.

During Ramadan, we serve Iftars to thousands of families who would otherwise be unable to celebrate the breaking of fast. And in Beqaa, Lebanon, our flagship bakery is still going strong. It baked and supplied 67,900 fresh (and free) loaves in 2022!



28,900 IFTARS



8,058 FOOD PACKS



17,150 HOT MEALS



QURBANI

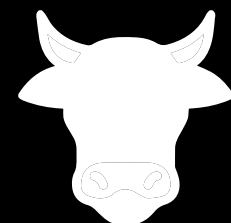
ETHICAL MEAT

During Dhul Hijja we sacrifice an animal in remembrance of the Prophet Ibrahim (AS) and distribute the meat to our families, neighbours, and those living in poverty.

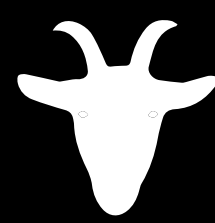
Our Ethical Qurbani project distributes high-welfare animals to needy families in Yemen, Pakistan, Ghana and Lebanon – **distributing over 15,000 kg of meat.**

OUR WELFARE PRINCIPLES ARE:

COWS MUST BE OVER THE AGE OF 2; GOATS AND SHEEP MUST BE OVER 12 MONTHS



2 YEARS



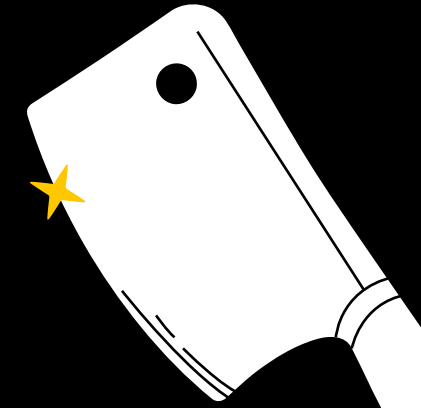
12+ MONTHS



THE ANIMAL MUST BE HEALTHY, WITH WELFARE RECORDS FOR THE PAST

SIX MONTHS

THE ANIMALS CANNOT BE SEPARATED FROM OFFSPRING



THE SLAUGHTER MUST BE QUICK AND PAINLESS – ONE CLEAN STROKE OF THE SHARP BLADE



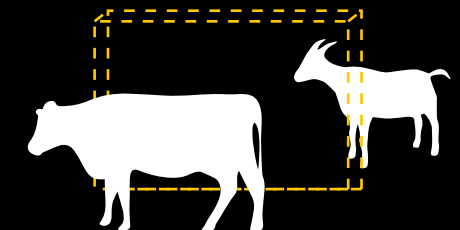
THE ANIMAL MUST BE TREATED WITH KINDNESS AND REARED PROPERLY, WITH ADEQUATE FEEDING AND SPACE TO ROAM FREELY



MEAT WILL BE DISTRIBUTED TO THOSE WHO LIVE BELOW THE INTERNATIONAL POVERTY LINE

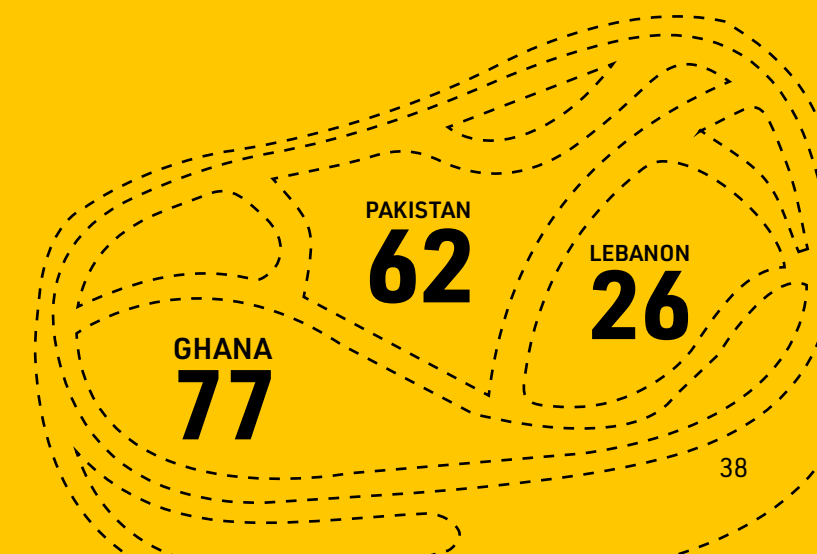
THE MEAT MUST BE DISTRIBUTED AS QUICKLY AS POSSIBLE TO AVOID CONTAMINATION

ANIMALS MUST BE HELD IN A SEPARATE LOCATION TO WHERE THE SLAUGHTER WILL HAPPEN SO AS NOT TO DISTRESS THE ANIMAL



ANIMALS DISTRIBUTED:

TOTAL: 165 ANIMALS = 1,650KG MEAT

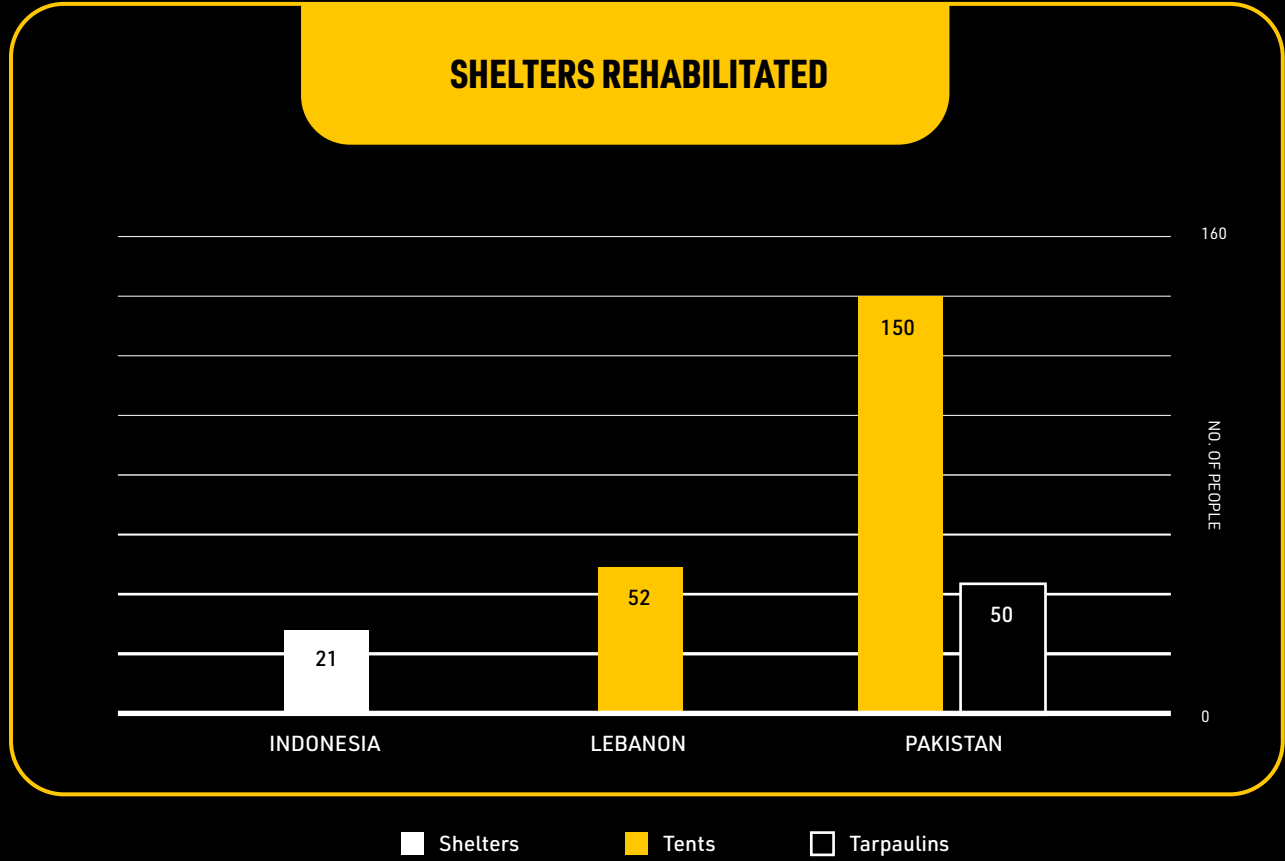


SHELTER

PROTECTION FROM THE ELEMENTS

Shelter is a basic human need. All over the world, our teams work to rehabilitate and restore homes – whether it’s a tent or an evacuated property.

In Lebanon, crowded refugee camps are full of people living without basics. While delivering tarpaulins, we noted feedback that certain types deteriorate too quickly. It may sound negative but it’s constructive – helping us to improve our provisions.





EDUCATION FOR THE FUTURE

LAUNCHING OUR TENT OF DREAMS PROJECT

Late in 2022 the award-winning Turkish actor Celal Al cut the ribbon on our first Tent of Dreams.

With qualified teachers, our classroom-sized tents will serve students in the refugee camps of Lebanon. We'll pay for stationery, books, and winter fuel and heaters to keep the tents operating all year round. Entry to the school will be by invitation: our teams on the ground are identifying children eligible for the project, focusing on those who are at risk of entering child labour or marriage.

HOW MANY CHILDREN CAN WE SERVE?



2 QUALIFIED TEACHERS



30 CHILDREN



5 TENTS

150 CHILDREN EDUCATED PER SCHOOL YEAR

PERSONAL AND FAMILY SPONSORSHIPS

In December 2022 we welcomed some of Birmingham’s best dressed for a glamorous evening of good food and wonderful company! It was an incredibly positive experience, not just for our guests, but also for our communities in Lebanon and Pakistan: our gorgeous ladies helped us to sponsor another 19 families.

In Pakistan, our Orphan Sponsorship scheme allows orphans to attend and finish school, where (as we all know) they’ll be able to play as much as they work! Family sponsorships help families to cover the cost of heating and health treatments, so that they can focus on caring for each other or providing an income. Our local teams select families and children for sponsorship to ensure that the money is (a) adequate and (b) protecting the most vulnerable.



SPONSORSHIPS



SUSTAINABLE INCOMES

CREATING INCOME OPPORTUNITIES



In Bangladesh, our **6-month sewing course** has been well-received. We deliver it free of charge to selected beneficiaries; when they finish, they also receive a sewing machine!



Depending on demand, we run **courses to train and equip female beekeepers** and this year have provided this in Pakistan. Hives don't take up much space and can produce a rich supply of honey.



Our **TukTuk project** continues in Lebanon. It's aimed at young, unemployed people who have the motivation and necessity to work. As well as the TukTuk (on a hire-purchase agreement), we supply business mentoring to help each recipient build their business. There's an extra benefit: another form of affordable transportation for local people.



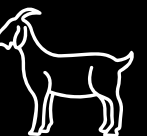
In 2022, we launched a new project to **support livestock farmers**. As well as the gift of two goats, each family gets mentoring to support their business journey. Breeding goats can become an excellent source of income. To keep this project running, we ask each family to give us two of their goats' offspring, which we can give to another family.

GENERATING INCOME TO ELIMINATE POVERTY:

80 SEWING COURSES
COMPLETED - **BANGLADESH**



50 PAIRS OF GOATS
DISTRIBUTED - **PAKISTAN**



50 HONEY-BEE COURSES
AND HIVES PROVIDED - **PAKISTAN**



15 MORE TUKTUKS
PROVIDED - **LEBANON**



INCOME OPPORTUNITIES FOR A TOTAL
195 FAMILIES

PART THREE: FINANCIALS

TRUSTEES ANNUAL REPORT

The trustees presents their report with the unaudited financial statements of the charity for the year ended 31 August 2022.

REFERENCE AND ADMINISTRATIVE DETAILS

Charity No. 1142191

Principal Office

84 Kingsley Road
Hounslow
TW3 1QA

Trustees

The following trustee served during the year:

H M A Quadir
Sultana Quadir
Sharif Banna
Abdul Wahid
Abdul Hafiz
Jamal Uddin

Independent Examiners

S.Asghar & Co
Chartered Certified Accounts &
registered Auditors
85 Station Road Harrow
London
HA2 7SW

Bankers

HSBC BANK PLC
BARCLAYS BANK PLC

Signed



Trustee
30th April 2023

OBJECTIVES AND ACTIVITIES

A large charity must provide an explanation of its aims, including details of the issues it seeks to tackle and the changes or differences it seeks to make through its activities...

A large charity must provide an explanation how the achievement of its aims will further its legal purposes...

A large charity must provide an explanation of its strategies for achieving its stated aims and objectives...

A large charity must provide an explanation of its criteria or measures it uses to assess success in the reporting period...

A large charity should provide a more detailed explanation of its short-term and long-term aims and objectives...

ACHIEVEMENTS AND PERFORMANCE

A large charity must review its charitable activities undertaken, explaining performance achieved against objectives set ...

A large charity must include an explanation when material fundraising activities are undertaken, details of the performance achieved against fundraising objectives set ...

A large charity must provide an explanation when material investments are held, details of investment performance achieved against objectives set ...

A large charity must provide an explanation of any material expenditure occurred to raise income in the future...

A large charity must provide commentary on those significant positive and negative factors within and outside the charity's control which are relevant to the achievement of its objectives ...

PLANS FOR FUTURE PERIODS

A large charity must provide a summary of the charity's plans for the future including its aims and objectives and details of any plans to achieve them ...

A large charity's report should explain the trustees perspective of the future direction of the charity...

The trustee is responsible for keeping proper accounting records that disclose with reasonable accuracy at any time the financial position of the charity and to enable them to ensure that the financial statements comply with the Charities Act 2011, the applicable Charities (Accounts and Reports) Regulations, and the provisions of the Trust deed. The Trustee is also responsible for safeguarding the assets of the charity and hence taking reasonable steps for the prevention and detection of fraud and other irregularities.

INDEPENDENT EXAMINERS REPORT

Independent Examiner's Report to the trustees of Salam Charity

I report to the trustees on my examination of the financial statements of Salam Charity for the year ended 31 August 2022 which comprise the Statement of Financial Activities, the Balance Sheet and the related notes.

Responsibilities and basis of report

As the charity's trustee you are responsible for the preparation of the financial statements in accordance with the requirements of the Charities Act 2011 ('the Act'). The trustee considers that an audit is not required for this year under the Charities Act 2011, s.144(2) (the 2011 Act) and that an independent examination is needed.

I report in respect of my examination of the charity's financial statements carried out under section 145 of the 2011 Act and in carrying out my examination I have followed all the applicable Directions given by the Charity Commission under section 145(5)(b) of the Act.

Independent examiner's statement

As the charity's gross income exceeded £250,000 your examiner must be a member of a body listed in section 145 of the 2011 Act. I confirm that I am qualified to undertake the examination by being a qualified member of .

I have completed my examination. I can confirm that no material matters have come to my attention in connection with the examination giving me cause to believe that in, any material respect:

- the accounting records were not kept in respect of the charity as required by section 130 of the Act; or
- the financial statements do not accord with those records; or
- the financial statements do not comply with the applicable requirements concerning the form and content of the financial statements set out in the Charities (Accounts and Reports) Regulations 2008 other than any requirement that the financial statements give a 'true and fair' view which is not a matter considered as part of an independent examination.

I have no concerns and have come across no other matters in connection with the examination to which attention should be drawn in this report in order to enable a proper understanding of the financial statements to be reached.

S.Asghar & Co
Chartered Certified Accounts & Registered Auditors
85 Station Road
Harrow
London
HA2 7SW
30th April 2023

STATEMENT OF FINANCIAL ACTIVITIES

for the year ended 31 August 2022

	Notes	Unrestricted Funds 2022 (£)	Total Funds 2022 (£)	Total Funds 2021 (£)
Income and endowments from:				
Donations and Legacies	3	3,309,655	3,309,655	2,459,056
Total		3,309,655	3,309,655	2,459,056
Expenditure on:				
Raising funds	4	300,153	300,153	6,822
Charitable Activities	5	1,942,946	1,942,946	995,019
Other	6	200,011	200,011	299,059
Total		2,443,110	2,443,110	1,300,900
Net gains on investments		-	-	-
Net income	7	866,545	866,545	1,158,156
Transfers between funds		-	-	-
Net income before other gains/(losses)		866,545	866,545	1,158,156
Other gains and losses		-	-	-
Net movement in funds		866,545	866,545	1,158,156
Reconciliation of funds:				
Total funds brought forward		1,421,757	1,421,757	263,601
Total funds carried forward		2,288,302	2,288,302	1,421,757

BALANCE SHEET

at 31 August 2022 Charity No.
1142191

	Notes	2022 (£)	2021 (£)
Fixed assets			
Tangible assets	9	3,598	4,387
		3,598	4,387
Current assets			
Cash at bank and in hand		2,302,904	1,430,170
		2,302,904	1,430,170
Creditors: Amount falling due within one year	10	(18,200)	(12,800)
Net current assets		2,284,704	1,417,370
Total assets less current liabilities		2,288,302	1,421,757
Net assets excluding pension asset or liability		2,288,302	1,421,757
Total net assets		2,288,302	1,421,757
The funds of the charity			
Restricted funds	11		
Unrestricted funds	11		
General funds		2,288,302	1,421,757
		2,288,302	1,421,757
Reserves	11		
Total funds		2,288,302	1,421,757

Approved by the trustees on And signed on
their behalf by:

Trustee
30th April 2023

NOTES TO THE ACCOUNTS

for the year ended 31 August 2022

1. ACCOUNTING POLICIES

Basis of preparation

The financial statements have been prepared in accordance with Statement of Recommended Practice: Accounting and Reporting by Charities preparing their accounts in accordance with the Financial Reporting Standard applicable in the UK and Republic of Ireland (FRS 102) issued on 16 July 2014 and the Financial Reporting Standard applicable in the United Kingdom and Republic of Ireland (FRS 102) and the Charities Act 2011.

Change in basis of accounting or to previous accounts

There has been no change to the accounting policies (valuation rules and method of accounting) since last year and no changes have been made to accounts for previous years.

Fund accounting

Unrestricted funds	These are available for use at the discretion of the trustees in furtherance of the general objects of the charity.
Designated funds	These are unrestricted funds earmarked by the trustees for particular purposes.
Revaluation funds	These are unrestricted funds which include a revaluation reserve representing the restatement of investment assets at their market values.
Restricted funds	These are available for use subject to restrictions imposed by the donor or through terms of an appeal.

Income

Recognition of Income	Income is included in the Statement of Financial Activities (SoFA) when the charity becomes entitled to, and virtually certain to receive, the income and the amount of the income can be measured with sufficient reliability.
Income with related expenditure	Where income has related expenditure the income and related expenditure is reported gross in the SoFA.

Income

Donations and legacies	Voluntary income received by way of grants, donations and gifts is included in the the SoFA when receivable and only when the Charity has unconditional entitlement to the income.
Tax reclaims on donations and gifts	Income from tax reclaims is included in the SoFA at the same time as the gift/donation to which it relates.
Donated services and facilities	These are only included in income (with an equivalent amount in expenditure) where the benefit to the Charity is reasonably quantifiable, measurable and material.
Volunteer help	The value of any volunteer help received is not included in the accounts.
Investment income	This is included in the accounts when receivable.
Gains/(losses) on revaluation of fixed assets	This includes any gain or loss resulting from revaluing investments to market value at the end of the year.
Gains/(losses) on investment assets	This includes any gain or loss on the sale of investments.

Expenditure

Recognition of expenditure	Expenditure is recognised on an accruals basis. Expenditure includes any VAT which cannot be fully recovered, and is reported as part of the expenditure to which it relates.
Expenditure on raising funds	These comprise the costs associated with attracting voluntary income, fundraising trading costs and investment management costs.
Expenditure on charitable activities	These comprise the costs incurred by the Charity in the delivery of its activities and services in the furtherance of its objects, including the making of grants and governance costs.
Grants payable	All grant expenditure is accounted for on an actual paid basis plus an accrual for grants that have been approved by the trustees at the end of the year but not yet paid.
Governance costs	These include those costs associated with meeting the constitutional and statutory requirements of the Charity, including any audit/independent examination fees, costs linked to the strategic management of the Charity, together with a share of other administration costs.
Other expenditure	These are support costs not allocated to a particular activity.

Taxation

The charity is exempt from tax on its charitable activities.

Cash and cash equivalents

Cash and cash equivalents comprise cash at bank and on hand, demand deposits with banks and other short-term highly liquid investments with original maturities of three months or less and bank overdrafts. In the statement of financial position, bank overdrafts are shown within borrowings or current liabilities. In the Statement of Cash Flows, cash and cash equivalents are shown net of bank overdrafts that are repayable on demand and form an integral part of the company's cash management.

Trade and other creditors

Short term creditors are measured at the transaction price. Other creditors and provisions are recognised where the charity has a present obligation resulting from a past event that will probably result in the transfer of funds to a third party and the amount due to settle the obligation can be measured or estimated reliably. Creditors and provisions are normally recognised at their settlement amount after allowing for any trade discounts due.

Research and development

Expenditure on research and development is written off in the year in which it is incurred.

Foreign currencies

Monetary assets and liabilities denominated in currencies other than the functional currency of the charity are translated at the rates of exchange prevailing at the end of the reporting period. Transactions in currencies other than the functional currency of the charity are recorded at the rate of exchange on the date that the transaction occurred.

All exchange differences are taken into account in arriving at net income/expenditure.

Pension costs

The charity operates a defined contribution plan for its employees. A defined contribution plan is a pension plan under which the charity pays fixed contributions into a separate entity. Once the contributions have been paid the charity has no further payments obligations. The contributions are recognised as expenses when they fall due. Amounts not paid are shown in accruals in the balance sheet. The assets of the plan are held separately from the charity in independently administered funds.

Receipt of donated goods, facilities and services

All donated goods, facilities and services received are recognised within incoming resources and expenditure at an estimate of the value to the charity.

NOTES TO THE ACCOUNTS

2. STATEMENT OF FINANCIAL ACTIVITIES - PRIOR YEAR

	Unrestricted Funds 2021 (£)	Restricted Funds 2021 (£)	Total Funds 2021 (£)
Income and endowments from:			
Donations and Legacies	2,262,613	196,443	2,459,056
Total	2,262,613	196,443	2,459,056
Expenditure on:			
Raising funds	6,822	-	6,822
Charitable Activities	798,576	196,443	995,019
Other	299,059	-	299,059
Total	1,104,457	196,443	1,300,900
Net income	1,158,156	-	1,158,156
Net income before other gains/(losses)	1,158,156	-	1,158,156
Other gains and losses:			
Net movement in funds	1,158,156	-	1,158,156
Reconciliation of funds:			
Total funds brought forward	263,601	-	263,601
Total funds carried forward	1,421,757	-	1,421,757

3. INCOME FROM DONATIONS AND LEGACIES

	Unrestricted Funds 2020 (£)	Total 2022 (£)	Total 2021 (£)
Donations and gifts from individuals	3,309,655	3,309,655	2,459,056
	3,309,655	3,309,655	2,459,056
Donated goods, facilities and services received		3,309,655	-
		3,309,655	-

NOTES TO THE ACCOUNTS

4. EXPENDITURE ON RAISING FUNDS

	Unrestricted (£)	Total 2022 (£)	Total 2021 (£)
Fundraising trading costs	300,153	300,153	6,822
	300,153	300,153	6,822

5. EXPENDITURE ON CHARITABLE ACTIVITIES

	Unrestricted (£)	Total 2022 (£)	Total 2021 (£)
Expenditure on charitable activities			
Grants made	1,942,946	1,942,946	995,019

6. OTHER EXPENDITURE

	Unrestricted (£)	Total 2022 (£)	Total 2021 (£)
Employee costs	24,500	24,500	-
Motor and travel costs	-	-	10,584
Amortisation, depreciation, impairment, profit/loss on disposal of fixed assets	789	789	963
General administrative costs	156,363	156,363	24,172
Legal and professional costs	18,359	18,359	263,340
	200,011	200,011	299,059

7. NET INCOME BEFORE TRANSFERS

	2022 (£)	2021 (£)
This is stated after charging:		
Depreciation of owned fixed assets	789	963

NOTES TO THE ACCOUNTS

8. Staff costs

No employee received emoluments in excess of £60,000.

9. TANGIBLE FIXED ASSETS

	(£)	(£)
Cost or revaluation		
At 1 September 2021	6,687	6,687
At 31 August 2022	6,687	6,687
Depreciation and impairment		
At 1 September 2021	2,300	2,300
Depreciation charge for the year	789	789
At 31 August 2022	3,089	3,089
Net book values		
At 31 August 2022	3,598	3,598
At 31 August 2021	4,387	4,387

10. CREDITORS:

Amounts falling due within one year

	2022 (£)	2021 (£)
Accruals	18,200	12,800
	18,200	12,800

11. MOVEMENT IN FUNDS

	At 1 September 2021	Incoming resources (including other gains/losses) (£)	Resources expended (£)	At 31 August 2022 (£)
Restricted funds:				
Unrestricted funds:				
General funds	1,421,757	3,309,655	(2,443,110)	2,288,302
Total funds	1,421,757	3,309,655	(2,443,110)	2,288,302

NOTES TO THE ACCOUNTS

12. ANALYSIS OF NET ASSETS BETWEEN FUNDS

	Unrestricted Funds (£)	Total (£)
Fixed Assets	3,598	3,598
Net Current Assets	2,284,704	2,284,704
	2,288,302	2,288,302

13. RECONCILIATION OF NET DEBT

	At 1 September 2021 (£)	Cashflows (£)	At 31 August 2022 (£)
Cash and Cash equivalents	1,430,170	872,734	2,302,904
	1,430,170	872,734	2,302,904
Net debt	1,430,170	872,734	2,302,904

STATEMENT OF CASH FLOWS

FOR THE YEAR ENDED 31 AUGUST 2022

	2022 (£)	2021 (£)
Cash flows from operating activities		
Net income per Statement of Financial Activities	866,545	1,158,156
Adjustments for:		
Depreciation of property, plant and equipment	789	963
Increase in trade and other payables	5,400	9,100
Net cash provided by operating activities	872,734	1,168,219
Net cash used in investing activities	-	-
Net cash from financing activities	-	-
Net increase in cash and cash equivalents	872,734	1,168,219
Cash and cash equivalents at the beginning of the period	1,430,170	261,951
Cash and cash equivalents at the end of the period	2,302,904	1,430,170
Components of cash and cash equivalents		
Cash and bank balances	2,302,904	1,430,170
	2,302,904	1,430,170

DETAILED STATEMENT OF FINANCIAL ACTIVITIES

FOR THE PERIOD ENDED 31 AUGUST 2021

	Unrestricted funds 2022 (£)	Total funds 2022 (£)	Total funds 2021 (£)
Income and endowments from:			
Donations and legacies			
Donations and gifts from individuals	3,309,655	3,309,655	2,459,056
Total income and endowments expenditure on:	3,309,655	3,309,655	2,459,056
Expenditure on:			
Costs of other trading activities	300,153	300,153	6,822
	300,153	300,153	6,822
Total of expenditure on raising funds			
Charitable activities			
Grants made	1,942,946	1,942,946	995,019
	1,942,946	1,942,946	995,019
Total of expenditure on charitable activities			
Employee costs	24,500	24,500	24,500
Temporary staff	24,500	24,500	24,500
Motor and travel costs	-	-	10,584
Travel and subsistence	-	-	10,584
General administrative costs, including depreciation and amortisation			
Depreciation of property, plant and equipment	789	789	963
Bank Charges	2,210	2,210	1,707
Information and publications	94,406	94,406	3,398
Software, IT support and related costs	50,819	50,819	14,928
Stationery and printing	1,790	1,790	2,103
Subscriptions	874	874	-
Sundry expenses	5,856	5,856	2,036
Telephone, fax and broadband	408	408	-
	157,125	157,125	25,135

DETAILED STATEMENT OF FINANCIAL ACTIVITIES

	Unrestricted funds 2022 (£)	Total funds 2022 (£)	Total funds 2021 (£)
Legal and professional costs			
Audit/Independent examination fees	9,000	9,000	9,000
Accountancy and bookkeeping	7,574	7,574	-
Consultancy fees	1,785	1,785	245,940
Other legal and professional costs	-	-	7,800
	18,359	18,359	263,340
Total of expenditure of other costs			
	200,011	200,011	299,059
Total expenditure	2,443,110	2,443,110	1,300,900
Net gains on investments	-	-	-
Net income			
	866,545	866,545	1,158,156
Net income before other gains/(losses)	866,545	866,545	1,158,156
Other Gains	-	-	-
Net movement in funds			
	866,545	866,545	1,158,156
Reconciliation of funds:			
Total funds brought forward	1,421,757	1,421,757	263,601
Total funds carried forward	2,288,302	2,288,302	1,421,757



Salam Charity

ANNUAL REPORT

**2021
2022**

Salam Charity UK
483 Green Lanes
London
N13 4BS
United Kingdom

020 8090 4090

Charity No. 1142191

The text of this document (this excludes, where present, Salam Charity and partner agency logos) may not be reproduced without the express permission of Salam Charity and provided that it is reproduced accurately and not in a misleading context. The material must be acknowledged as Salam Charity copyright and the document title specified. Photographs copyright of Salam Charity except where otherwise identified. Permission from copyright holders must be sought before any photographs are reproduced. You can download this publication from salamcharity.org.uk/news