

ANNUAL REPORT 2025

Building stronger, for a better future

registered charity no. 1141343



Knighton Manor, Broad Chalke, Salisbury, Wiltshire SP5 5EB
www.cressuk.org e: caroline.lamb@cressuk.org t: 01722 780789

CONTENTS

*since 2010 CRESS
has been helping the
South Sudanese
create self-sufficient,
sustainable and ethical
communities*

- 3 Vision, Mission & Values**
- 4 Charitable objectives**
- 5 Our work**
- 6 Message from the CEO**
- 9 Achievements**
- 14 Impact**
- 16 13 years of CRESS**
- 17 Making a difference**
- 18 Finance**
- 19 Strategic objectives**
- 20 Governance**
- 23 Charity details**
- 24 Accounts 2025**
- 34 Independent examiner's report**
- 35 Statement of trustees' responsibilities**



CRESS began working in Rhino 8 in 2025 - this is the newest refugee settlement in northern Uganda



VISION, MISSION & VALUES

Kade Rose, a member of Friendly Group in Mijale



CORE VALUES



Christian Relief
Education Skills and
Sustainability

VISION

Holistically transformed
communities living self-
sufficient lives

MISSION

Educate and train displaced people
with the knowledge and skills to
empower them to establish self-
sustaining communities.

compassion

sustainability

empowerment

integrity

continuous
learning

partnership

CHARITABLE OBJECTIVES

Purpose

The prevention and relief of poverty, suffering, distress and ill-health and the advancement of education, self-sufficiency, sustainability and Christian discipleship in Africa by providing grants, items and services in such ways and such places as the trustees see fit, which includes but is not limited to:

(a) improving educational opportunities and standards through sponsorship

(b) improving primary health, trauma and maternal care through training and sponsorship, including the provision of a primary health care clinic;

(c) providing training and support for but not limited to agriculture;

(d) promoting community finance through the establishment of Savings Groups and the provision of loans, education and advice;

(e) equipping, training and supporting local clergy and lay church members

Lulu Emmanuel, Clinical Officer, with some children from Rhino 8



OUR WORK



Strategy 1

Sustainable and equitable access to nutritious food

Project 1

Self-reliance and resilient livelihood project



Tools, seeds & advice



Providing training and ongoing advice



Training Lead Farmers & Community Process Facilitators



Providing savings materials



Advice for individuals

Strategy 2

Improve health and wellbeing

Project 2.1

Preventive Community Health



Providing maternal care



Diagnosis & treatment



Outreach services

Project 2.2

CATT* Counselling & Awareness

Trauma Awareness



Helping young people



Strategy 3

Enable a functional & literate society

Project 3

Holistic & Inclusive Education



Provide support to enable children to get quality education opportunities



Equipment for schools



Exams success for candidates



Continued learning for CRESS staff

Strategy 4

Promote spirituality & moral integrity

Project 4.1

Community Discipleship and Evangelism



Build clergy capacity for discipleship through discipleship materials and transport

Project 4.2

Child Evangelism and Discipleship



Training and equipment for volunteer youth workers



Good news clubs, 5 days' clubs and school ministry

MESSAGE FROM THE CEO

2025 has seen CRESS Africa Foundation (CAF) team continue to embed themselves in their role, serving and empowering the refugee and host communities in rural northern Uganda.

It was a delight to take Jonathan Woolven out to visit the projects with his special focus on the agriculture part of the Livelihood Project and his interest in the holistic approach CRESS takes to ensure that individuals and communities can thrive.

CAF have strengthened their agriculture training this year with the introduction of Lead Farmers. Lead Farmers have undergone additional training, like our CPFs (Community Process Facilitators), but they are members of a Livelihood Group - so are constantly on the ground working the gardens, helping their group attain the best results for each season. This knowledge then also filters down into the individual gardens around group members' homes. The agriculture work is now more important than ever as there are no food supplements given to refugees after the first six months, so they need to feed themselves and make a living to survive. The Lead Farmer initiative has made a significant improvement in implementation of the sustainable, climate-smart agriculture techniques which in turn have improved yield and profitability.

It was also great to have Jonathan with me as he was happy to travel the many, many miles to each of the different projects including to the new Rhino 8 camp where new refugees from many different countries are being hosted - but the infrastructure, including roads is very poor. Jonathan went there to visit the

Pamugun livelihood group in their cabbage garden when Jonathan visited



Healthcare team, who, from October to December were running the only clinic in the area. UNHCR had provided tents for the clinic, but it was only staffed two days a week and that provision was being pulled. Our health team moved in, lived in tents and saw 716 patients in their first three weeks. The work there has been exceedingly appreciated by patients and other agencies in the area, but the team is not large enough to sustain the intensity and volume that is needed as well as providing our other healthcare services, so it looks like another change for health in 2026.

The healthcare projects, which as well as health care include our maternal healthcare, RUMPs (Reusable Menstrual Pads) and CATT (Children's Accelerated Trauma Therapy) are well funded in 2026 thanks to our amazing donors and Big Give Christmas Challenge of 2025. CRESS could simply not continue to help, lift-up and strengthen the refugees and their host community and enable them to live sustainably without the support of our amazing donors and grant providers and I am forever thankful to all of them for enabling our work.

On a personal note I was very much humbled by my nomination and to be awarded an MBE in the King's Birthday Honours 2025 in recognition of my charity work supporting South Sudanese refugees. Thank you to those who supported my nomination and congratulated me on the award, it was a very special occasion.

Cashie

Another busy day in the clinic in Rhino 8





Meet Mutinga Joyce

"I'm 18 years old, a lactating mother from South Sudan, and a member of the Lyete Group of Happy and Healthy Mothers and their babies here in Imvepi Refugee Settlement. I want to thank Cress Africa Foundation from the bottom of my heart for bringing this life-changing health education to us starting from June, 2025.

Since arriving in Uganda, we've never had such a powerful and practical training. They taught us how to prevent malaria - a disease that has affected so many of us - and even showed us how to properly hang mosquito nets to protect our families. We received mosquito nets for all mothers and mama kits for pregnant women, which are so important for safe deliveries.

Before this, CRESS had already given us agricultural tools, which helped us grow food and care for our children. These tools are helping us become self-reliant, and now with the health support, we feel even more empowered. It's true what they said - the name of the project is 'Happy and Healthy Mothers and their babies,' and today, I truly feel both happy and healthy.

This project has given me hope. I had to stop school in Senior Three, but now I believe I can go back and continue my education. I dream of becoming like the staff of CRESS Africa Foundation - strong, kind, and committed to helping others. Thank you so much to Lulu Emmanuel, your team and everyone who made this possible. Without your care and support, none of this would have reached us. You've touched our lives in ways we will never forget."

ACHIEVEMENTS 2025

Livelihood Project Savings Groups

Savings groups act like a community bank. Refugees put their money in and can then ask for loans for business or the needs of their family. They repay over time with interest. The groups also are encouraged to be involved in projects together to raise funds which are distributed yearly.

SUPPORTING

70

LIVELIHOOD GROUPS
IMPACTING 2,080
HOUSEHOLDS

MATURE
GROUPS

12

GROUPS ABOUT 5 YEARS
OLD NOW OPERATE
INDEPENDENTLY

OF
LOANS
TAKEN

79%

WERE TAKEN BY
WOMEN

SUPPORT
& TRAINING FOR

9

CPFs (COMMUNITY
PROCESS FACILITATORS)
TO SUPPORT THE
GROUPS

MEMBERS
TRAINED

935

IN MARKET RESEARCH,
BUSINESS SELECTION,
BUSINESS
MANAGEMENT &
BUDGETING

TOTAL
SAVINGS
£323,281
WITH BUSINESS LOANS
TOTTALLING
£143,903
IN 2025

FORMED &
EQUIPPED

26

NEW GROUPS 10 FOR
THE HAPPY HEALTHY
MOTHERS PROJECT
in IMVEPI

MENTORED

610

IN FINANCIAL LITERACY
ON LOANS MANAGEMENT,
SOCIAL FUND UTILIZATION,
BUDGETING AND
RECORD KEEPING

MEMBERS
IN BUSINESS

1,186

INC. SHOPS, CHARCOAL,
VEGETABLES, HAIR SALON,
MOBILE MONEY, HOTEL,
BIKE TAXI &
PANCAKES

TRAINED

535

IN
ENTREPRENEURSHIP

TRAINED
CRESS STAFF WHO
THEN TRAINED

15 GROUPS IN BUSINESS
PLAN DEVELOPMENT,
5 IN FINANCIAL LITERACY,
3 IN CONFLICT
RESOLUTION, 2 IN
VISION PLANS

GROUPS
MEMBERS ARE

80.5%

FEMALE
3% HAVE A
DISABILITY OR
HIV

Martha Uma.

Martha Uma is a member of Ngun Kata group in Rhino Camp. She has saved 350,000 Ugandan shillings (just over £70) through consistent group participation and has invested in a sewing machine to start a tailoring business.

She said the income from the business will support her children's school fees and enable her to continue saving.

Martha with her sewing machine



9

* Savings Groups are also known as Community Savings and Credit Groups CSCGs

ACHIEVEMENTS 2025

Livelihood Project Agriculture

The aim of our agriculture training is to equip learners with the skills of sustainable organic farming practices that will enable them to improve their families' food security, nutrition and income.

TRAINING FOR
1,287
GROUP MEMBERS
IN CLIMATE-SMART
SUSTAINABLE
AGRICULTURE
79%
FEMALE

IN 2025
809
INDIVIDUAL GARDENS
ESTABLISHED WITH
1,083
WORKING GROUP
GARDENS

INPUTS
& SEEDS FOR
49
GROUPS IN
2025



Poni Jane
of Faith
group
chose
tomatoes
and onion
for her crop



Kale
harvest

TREE
SEEDLINGS
DISTRIBUTED
2,610

INCLUDING GRAFTED MANGO,
ORANGE AND GUAVA TO 870
GROUP MEMBERS IN RHINO
CAMP, IMVEPI
& MIJALE

TRAINED
83

LEAD FARMERS FROM
29 GROUPS ACROSS
ALL LOCATIONS

RHINO
CAMP
29
MEMBERS
SUPPORTED IN POST-
HARVEST CROP
MANAGEMENT

EMERGENCY
SUPPORT FOR

50

NEW REFUGEES IN
RHINO 8

TRAINING
INSPIRED

32

GROUPS TO MAKE
COMPOST MANURE
PITS WITH PLANT
MATERIAL

Summary of the modules covered during the sustainable climate smart agriculture training.

- Nursery bed establishment and management.
- Agronomy field best practices such as mulching, irrigation, weeding.
- Soil management.
- Crops Pest identification and control.
- Post-harvest handling.
- Soil improvement
- Liquid manure making
- Organic pesticides making.

NEW IN 2025, LEAD FARMERS ARE INSPIRING OTHERS

Each group has a lead farmer who receives extra training so that they can go on to train their peers. They lead their groups and cascade their knowledge ensuring better outcomes. Alongside better agricultural practices, this approach brings communities together for greater unity, sustainability and self-sufficiency.

*Kade Rose, lead farmer of Friendly Group
in her tomato garden being supported by her CPF*



ACHIEVEMENTS 2025

Christian Discipleship



A Good News Club in action

"My name is Gifton Lupai, and I attend Generation Stars Good News Club in Imvepi Refugee Settlement. I am very grateful to the children's workers for coming to teach us in the Good News Club. I have learnt the stories in the Bible, I used this knowledge and passed my RE exams very well. I know how to read my Bible. Thank you so much, for coming every week to teach us in Good News Club."

CHILDREN
REACHED
28,446

IN 60 GOOD NEWS CLUBS, 21,721
CHILDREN IN 36 SUNDAY SCHOOL
CLASSES, 3,990 CHILDREN IN
114 CHRISTMAS PARTY CLUBS
AND 21,798 PUPILS IN 15
SCHOOLS WHERE SCHOOL
MINISTRIES WERE
CONDUCTED

SOME

2,707

CHILDREN GIVING
THEIR LIVES TO
CHRIST

TRAINED

117

VOLUNTEER YOUTH WORKERS IN
3 SUPER SEMINAR WORKSHOPS,
TRAINED 3 VCWs* IN DYNAMICS
OF TEACHERS TRAINING COURSE,
TRAINED 372 VCWs IN 10
CHRISTMAS PARTY TRAINING
WORKSHOPS, 60 VCWs TRAINED
ON SAFEGUARDING &
CHILD PROTECTION.

Volunteer youth
workers after
meeting with bikes
and supplies



Supporting Christian Communities

PRAYER &
COUNSELLING

1,220

FOR EMOTIONAL &
SPIRITUAL
COMFORT

ESTABLISHED

87

FELLOWSHIP
GROUPS FOR
YOUNG
WOMEN

OVER
31,000
IN IMVEPI RECEIVING
DISCIPLESHIP AND
50,000
REACHED IN
BIDIBIDI & HOST
COMMUNITY

FORMED

78

BIBLE STUDY
GROUPS

TRAINED

360

TO LEAD AND
DISCIPLE
OTHERS



Ministry team
in Imvepi

> Counselling and pastoral visits have increased due to alarming issues in the camp.

> Unity among the children of the different tribes as they come together for the children's activities means unity with the parents, schools and the community.

CRESS has continued to support communities in Bidi Bidi and Imvepi camps throughout 2025.

* VCWs are Volunteer Children's/Youth Workers

ACHIEVEMENTS 2025

Clinic, CATT* & outreach



Making RUMPS** left and below Nurse Bethy with patients in Rhino 8

In 2025 we supported a clinic in Koboko and then from October in Rhino 8. We also supported maternal health and RUMPS** training. The CATT* team work remotely in the villages near where each counsellor lives.

MIDWIFE SUPPORT FROM THE CLINIC

"My name is Huda Sumbua. I'm 31 years old, a proud Ugandan and one of the pregnant mothers in my final weeks pre-delivery. I belong to the United Women Group under the 'Happy, Healthy Mothers project' here in Imvepi refugee settlement.

This afternoon, we received mosquito nets and Mama Kits, and were taught how to use them properly - including how to hang the nets to protect ourselves and our babies from malaria. These teachings were so practical and empowering. I'm deeply grateful for this support.

Before today, I was so worried. As my delivery date approached, I didn't know where I would get the necessary supplies for my unborn baby. But God answered my prayer through this project. Receiving a Mama Kit at this moment is a blessing I will never forget. Things are not easy right now - essential supplies are hard to come by - but I feel incredibly lucky to be part of this group of Happy and Healthy Mothers."

IN RHINO
CRESS STAFF SAW
2,073
MATERNAL & CHILD HEALTH FOR
315
LAB TESTING FOR
1,633

RUMPS
TRAINING FOR
154
IN SCHOOLS &
RHINO 8

HAPPY
& HEALTHY
MOTHERS PROJECT
300
MOTHERS REACHED,
240 MOSQUITO NETS,
55 MAMA KITS, 150
IRON, DEWORMING &
MALARIA GIVEN



Left: Huda Sumbua

CATT*

Children Accelerated Trauma Therapy (CATT) is a structured, evidence-based trauma intervention for children aged 6–18 years experiencing Post-Traumatic Stress Disorder (PTSD). Eligibility requires a CRIES-8 score of 17/40 and above, with recovery typically achieved within 2–6 sessions.

Our trained CATT* Counsellors continue their valuable work de-traumatising child refugees and the host community, in rural Northern Uganda

**RUMPS Reusable Menstrual Pads

*CATT Children's Accelerated Trauma Therapy

CHILDREN
TREATED WITH CATT
606
CHILDREN SCREENED CHILDREN COUNSELLLED
760 466
CATT FOR STUDENTS
8

PTSD
AWARENESS
SESSIONS
68
IN 2025

TRAUMA
THERAPY
7
LOCAL COUNSELLORS
WORK WITH TRAUMATISED
CHILDREN
6 NEW BICYCLES
6 PHONES
PROVIDED



12

ACHIEVEMENTS 2025

Education Sponsorship

PRIMARY
& SECONDARY
EDUCATION FOR

53

REFUGEE
STUDENTS

PRIMARY
LEAVERS EXAMS
TAKEN & PASSED

3

IN 2025

EDUCATION
CONFERENCE
INSPIRING

177

STUDENTS

ENABLING

4

WITH
VOCATIONAL
TRAINING

UGANDAN
CERTIFICATES OF
EDUCATION* TAKEN

11

240 BOXES
OF SCHOOL
CHALKS AND 24 BOXES
OF PENS TO 24 REFUGEE
SCHOOLS SUPPORTING

27,130

REFUGEE CHILDREN IN
IMVEPI & RHINO
CAMP

SUPPORTING

9

THROUGH FULL
TIME TERTIARY
EDUCATION

GRADUATION
FOR

5

TERTIARY
STUDENTS



RUBA COMFORT EXCELS

Ruba Comfort Moses, a refugee girl from Rhino Camp, shows how education sponsorship can transform lives. She was among three learners supported by CRESS to sit for the Primary Leaving Examinations (PLE) this year.

Earlier in the year, Ruba's mock exam results were discouraging, and limited resources threatened to derail her education. Her mother could not afford coaching or textbooks for exam preparation. CRESS responded, covering extra classes and learning materials. Ruba committed herself fully to her studies, working harder than ever. Her determination paid off when the results were released, showing an outstanding first grade that surprised her teachers, family, and community.



Isaac Kuga completed his vocational skills training achieving a Certificate in Graphics and Design. He told us, *"Before the training, I had little hope of earning a sustainable income or contributing meaningfully to my community. But through this vocational programme, I gained hands-on skills in branding, poster design, photo editing, business cards, digital art, and social media content creation.*

Today, I am equipped not only with technical knowledge but also with confidence and creativity. I have already started designing fliers and logos for local businesses within the settlement, earning a small but growing income. My dream is to open a mini-design studio where other youth can also learn and work. I'm thankful to CRESS Africa Foundation and my sponsor for believing in me. You've given me a tool that will feed me for a lifetime."

*PLE Primary Leaving Examination

**UCE Uganda Certificate of Education equivalent to GCSEs

13

CRESS' 2025 strategy aims to help tackle the underlying causes of poverty and social injustice, as part of global efforts to meet the Sustainable Development Goals (SDGs).

**1 NO
POVERTY**



In the Livelihood Groups trained in agriculture, vegetables are grown and excess harvest sold at the markets. This income, however small, helps families enormously and is used for school fees and vital medicines. Once immediate expenses are met, group members then usually start building/renovating their houses, and start investing in their small businesses, which gives a level of financial security.

The 70 Livelihood Groups also help break the cycle of poverty by delivering loans, money and skills training to their 2,080 members, representing over 16,500** within their households, which in turn provides them with financial security and the ability to afford family needs.

We gave 154 refugee women RUMPS* training meaning they can save money on costly disposable menstrual pads and they can continue their lives at school and work.

**2 ZERO
HUNGER**



CRESS aims to increase food security through its Livelihood groups and agriculture training. Our training focuses on sustainable climate smart agriculture using organic regenerative practices such as composting, tree planting and soil conservation. Successful growing of off- season crops have improved nutrition.

Planting fruit and other tree species for garden and field protection enhances resilience and food security, with over 11,000 trees now planted. The species mix includes quick maturing papaya, nutrient rich avocado and families are now picking fruits.

Selling excess fruit, vegetables and crops provides income for all 1,083 trained group members and their families. This provides increased food security for over 8,664** individuals.

Business support offered to farmers and other small businesses means money is also available to buy food during dry seasons.

**3 GOOD HEALTH
AND WELL-BEING**



In 2025, CRESS funded a Healthcare Clinic in Koboko which treated refugees and the host community. 4 members of that team then ran the clinic in the new refugee settlement Rhino 8 seeing 2,073 people in 69 days. Malaria, typhoid, peptic ulcers, intestinal and urinary tract infections were most commonly seen in the clinic. 986 malaria tests were completed with 384 being positive.

300 Mosquito nets were distributed and mothers trained in malaria prevention, family spacing, water sanitation and hygiene. 150 received iron, de-worming and malaria tablets.

Our CATT programme helped 606 children cope with difficult life situations.

Well-being is greatly improved by the Livelihood Groups. Members feel a huge sense of belonging and hope which was previously lacking.

CRESS prefers to talk about our contribution to change, rather than claiming our work alone led to any given change.

*Education Response Plan for Refugees and Host Communities in Uganda (2018-2022) - www.edu-links.org

4 QUALITY EDUCATION



CRESS education sponsorship programme has supported young people in the refugee camps to access education including 9 students in tertiary education and 4 in vocational training. 59 children have been supported to attend primary school and secondary level.

In 2025 CRESS has also supported 2 staff members to continue their education through night classes enabling them to fulfil their potential.

Continuing training for our staff and volunteers this year has included our CPFs, Lead Farmers and Youth Workers who then pass their knowledge on in the local language to members of the Livelihood Groups and Good News Clubs.

5 GENDER EQUALITY



80.5% registered Livelihood Groups members are female and this year we started our Happy Healthy Mothers Project. Group members have been taught skills to improve their nutrition and financial security, enabling them to increase levels of empowerment and equality to become a force for change in their communities. 1,651 have been able to access loans from their groups and 1,001 women are engaged in business.

CRESS has supported women via the primary healthcare clinic outreach maternity services. Our field midwife has delivered support and knowledge in the field to pregnant women to keep them healthy during their pregnancy and birth and to help them consider child spacing in their families.

CRESS has always seen good gender balance in its education sponsorship. Currently, 33 out of 62 of our sponsored students are female.

8 DECENT WORK AND ECONOMIC GROWTH



Through the 70 Livelihood Groups, CRESS has helped 1,186 group members to set up and develop their own businesses and others involve themselves in the group businesses.

Individual businesses vary from shop-keeping to tailoring, from making charcoal to growing food and they all generate their own income which can then be spent locally to improve their economy.

As a group, they can often build larger businesses, these include buying and renting grain grinding mills, hire of furniture, computer hire and larger shops.

Our education support has also encouraged vocational qualifications meaning refugees have new skills which have lead to better work prospects.

15 YEARS OF CRESS

2010

2011

- > 1st Chalke Valley trip & Clergy conference
 - > 11 Clergy treated for River blindness
 - > 20 children sponsored
- > Small 2 roomed clinic opens in Liwolo

2014

- > Chalke Valley Lent Project raises £20,000 for building 8 roomed clinic in Liwolo

2016

- > 35 women form first agriculture project
- > People start to flee to Uganda

2018

- > Clinic accredited with Ugandan Health Authority
- > Agriculture training re-starts

2020

- > Supported refugees through COVID lockdown with food, PPE, home-schooling and Loud Speaker Project
- > Zoom for meetings with DOL & UK events

2022

- > Clinic oversaw eye health clinic & surgery
- > Pastor and youth conferences run by DoL
- > Fruit tree survey show 2,000 trees thriving
- > 70 Savings groups with 2,094 members

2024

- > CRESS Africa Foundation formed and becomes CRESS's delivery partner

2013

- > First agricultural training
- > Women's conference attended by 200 women in Kajo Keji led by 6 women from UK

2015

- > New clinic opened by CRESS team

2017

- > War means many from Kajo Keji flee to Uganda
- > CRESS moves to Uganda - office opens Arua
- > Joseph Aba becomes Bishop of the newly created Diocese of Liwolo
- > CRESS makes Diocese of Liwolo their partner
- > Clinic opens in September in Mijale

2019

- > 41 Savings groups started with 1,041 members
- > Clinic did hygiene and RUMPS training, co-ordinated CATT Counsellors & saw 7862 patients
- > Bishop Joseph leads a student conference

2021

- > Savings groups now have 1,570 members.
- > 76 pastors included within our agriculture training in addition to 320 group members.

2023

- > 542 babies delivered by clinic midwives
- > Total value of vegetables produced £200K

2025

- > All in this report...



MAKING A DIFFERENCE

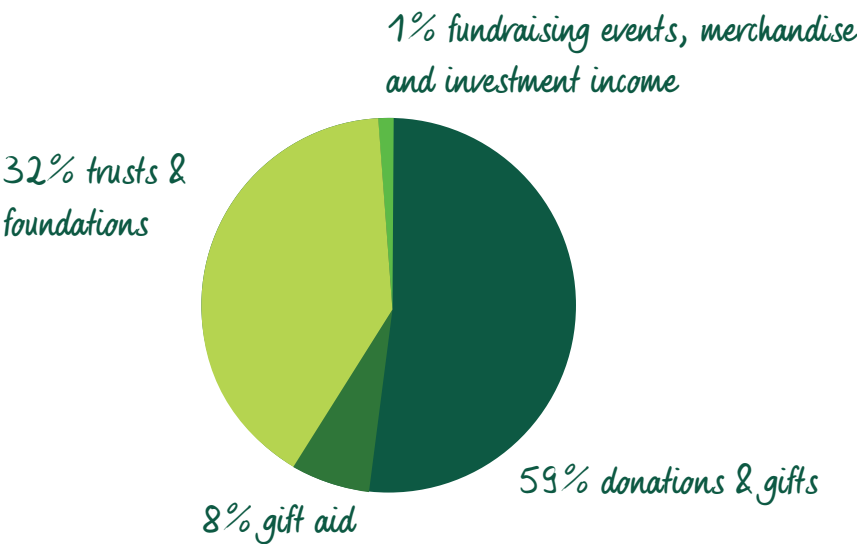
COMMUNITY SUPPORT



FINANCE

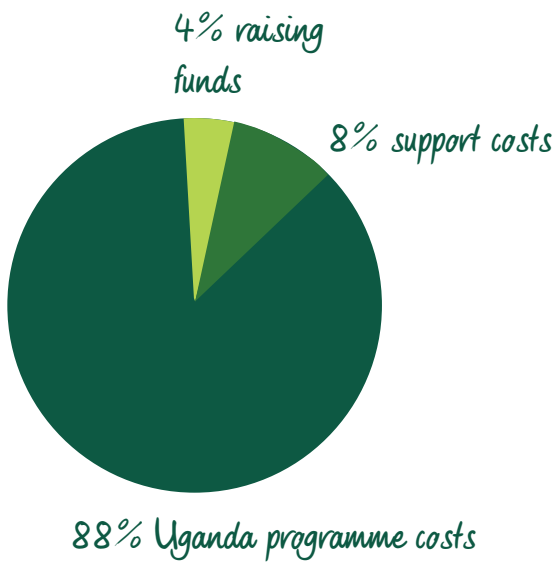
Income

Total: £327,799



Expenditure

Total: £298,300



Finance highlights of CRESS' 2025 Accounts



BUSINESS WOMAN, SAFI AZUKUSON, WITH HER HARVEST OF TOMATOES

CPF, Kenyi Emmanuel Ladu, from Mijale, was able to link her with the best market for her crops in Bugo trading centre, 4km away from her home, so she could get a better price for her goods

STRATEGIC OBJECTIVES

The table below sets out our plans for the coming year:

Strategic Objective	Plans 2025-2030
Sustainable and equitable access to nutritious food	<ul style="list-style-type: none"> To increase household food and nutrition security, measured by the number of meals eaten per household per day, their dietary diversity and adequate quantity. Beneficiary households should have adequate and nutritious food for all household members at all times, this should impact 54,000 individuals. Increase to 300 Livelihood Groups with 900 lead farmers trained to support others in their groups.
Promote economic wealth creation	<ul style="list-style-type: none"> To economically empower vulnerable women and youth to increase household wealth and improve their market-relevant skills for better economic opportunities. To increase to 300 Livelihood Groups benefitting 45,000 people. 7,500 micro-enterprises to be established.
Improve health and wellbeing	<ul style="list-style-type: none"> To improve quality of life and household work productivity through effective preventive health practices and increased knowledge of sexual and reproductive health.
Enable a functional & literate society	<ul style="list-style-type: none"> To increase access to and retention in learning and training opportunities. To increase to 100 children from vulnerable families having sponsored education 500 vulnerable youths to gain vocational skills training
Promote spirituality & moral integrity	<ul style="list-style-type: none"> To nurture the spiritual and moral well-being of refugee and host communities through holistic child evangelism and community discipleship, empowering them to lead self-sufficient and purpose-driven lives. 45,000 refugees and host community members to be nurtured in spiritual and moral well-being through sharing of the word of God
Diversify income generation and boost fundraising	<ul style="list-style-type: none"> To strengthen CRESS's fundraising capacity. To continue improving on the Big Give success and raise £20,000+ per year. To engage 2 volunteers to run fundraising events for CRESS each year.

GOVERNANCE

Governance

CRESS is an unincorporated organisation. Its governing document is a trust deed dated 12th of April 2011, as amended by resolutions dated 23rd of January 2013 and 11th of November 2019.

CRESS recruits Trustees in the UK with the skills and experience to ensure the charity carries out its activities effectively and efficiently. New Trustees are appointed by existing Trustees.

The Trustees take an active interest in operational activities and remain informed through regular reports and three full Board meetings a year.

2025 Trustees

Chair of Trustees

Jeremy Metcalfe OBE

Trustees

Caroline Lamb MBE MA Oxon. PGCE.
Dr Jonathan Cullis MA (Cantab) MBBS. MD. FRCP. FRCPATH.
Dr Jane Guy MBBS. MRCP. DRCOG.
Anthony Belchambers (Inner Temple)
John K E Broadley, MA Oxon, CMG.

Specialist Volunteer Advisers

Agricultural Adviser

Olivia Jane Jones

Jonathan Woolven

Medical Adviser

Dr Jane Guy

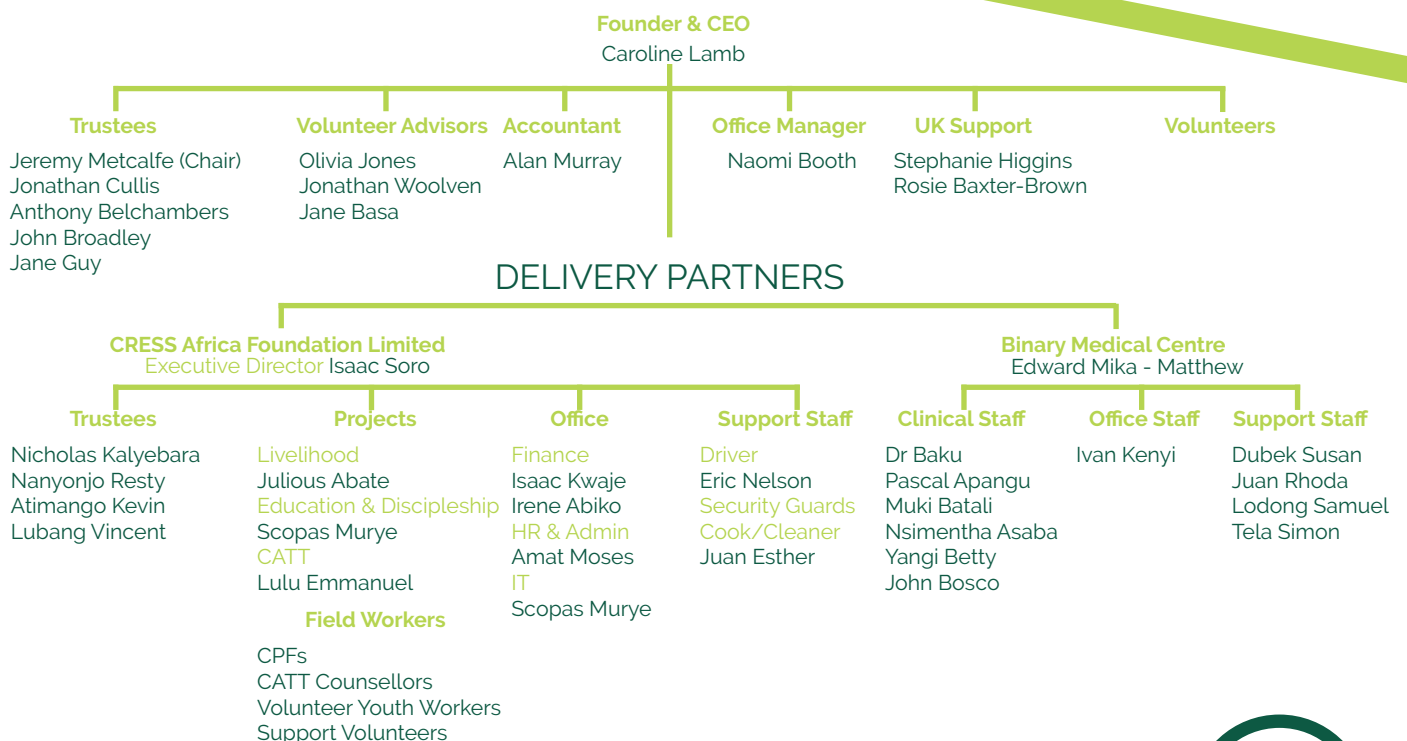
South Sudan Adviser

Namurye Jane Basa

Volunteer Coordinator & Strategy Assistant

Jamie Melville

ORGANISATION STRUCTURE





Mum and her child being seen in the clinic in Rhino 8

Public Benefit

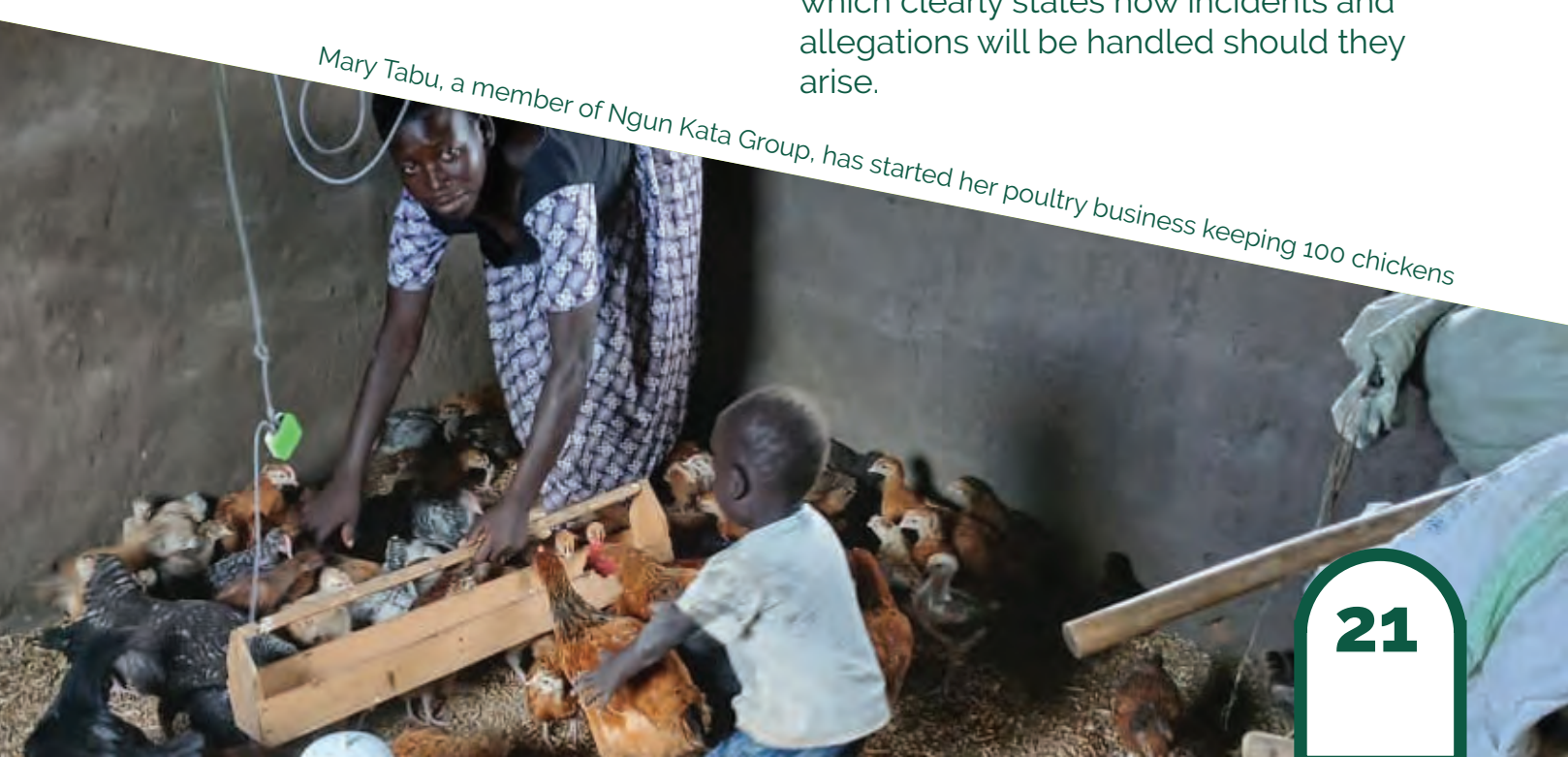
The Trustees confirm that they have complied with the requirements of section 4 of the Charities Act 2011 to have due regard to the public benefit guidance published by the Charity Commission for England and Wales. This Annual Report provides a summary of our main activities undertaken in 2025 demonstrating our charitable purpose for the public benefit.

Risk Management

The Trustees have a risk register, important risks are discussed at trustee meetings. The register is reviewed annually.

Safeguarding

The Trustees believe that the welfare of children and vulnerable individuals is paramount. The charity operates within the framework of its safeguarding policy, which clearly states how incidents and allegations will be handled should they arise.



Mary Tabu, a member of Ngun Kata Group, has started her poultry business keeping 100 chickens



Jacob, one of the volunteer children's workers with his CRESS bicycle and sweets for the children

Financial Overview

Total income in 2025 amounted to £327,799 (2024: £396,587). This was lower than the previous year, when extra funding had been received for the establishment of CRESS Africa and a short term partnership project with the Diocese of Blackburn. Donations from regular supporters and gifts from individuals and charitable trusts towards the regular programme remained strong and showed a small increase but grants from other institutions proved harder to secure in an ever more competitive environment.

Expenditure on the key elements of the Uganda programme, was consistent with the previous year at £261,628 (2024: £250,796 excluding the additional setup and Blackburn project costs) and UK support and fundraising costs were also steady at £36,672 (2024: £41,793).

The charity incurred a small deficit of £440 on unrestricted funds leaving reserves carried forward of £55,140 providing a secure start to the new year. Restricted reserves grew by £29,939 to £168,345 which will ensure continuity of the Uganda programme well into 2026.

Reserves

CRESS understands that our supporters want our resources to be used in the most efficient and effective manner achieving maximum impact for our beneficiaries. The Trustees aim to maintain unrestricted bank balances at a level which will provide sufficient funds to ensure that charitable activities, support and governance costs are covered for 3 months. The Trustees believe that the scale of our current operations requires no change to the reserves policy. However, they will continue to review the situation as the charity develops.

Refugee children in Rhino 8



CHARITY DETAILS

Charity

CRESS

Christian Relief Education Skills and Sustainability

Registered Charity Number

1141343

Principal Address

Knighton Manor Farm, Knighton Road, Broad Chalke, Salisbury, Wiltshire, SP5 5EB

Bankers

HSBC Bank Plc Blandford Forum

17 Market Place, Blandford Forum, Dorset, DT11 7AG

Independent Examiner

H Flint FCA

Mead House, High Road, Broad Chalke, Salisbury, Wiltshire, SP5 5EH

Accountant

Alan Murray

72 Churchfield Road, Poole, Dorset BH15 2QP

ANNUAL ACCOUNTS

CRESS

For the year ended 31 December 2025

Registered charity number: 1141343

CONTENTS

25-33	Statements of Financial Activities
34	Independent Examiners report to the Trustees
35	Statement of Trustee responsibilities

STATEMENT

of Financial Activities

Year ended 31st December 2025

		Unrestricted Funds	Restricted Income Funds	2025	2024
Incoming resources (Note 2)					
	Income and endowments				
	Donations and legacies	91,496	234,608	326,104	394,224
	Other trading activities	1,508	-	1,508	2,003
	Investments	187	-	187	360
	Total income and endowments	93,191	234,608	327,799	396,587
Resources expended (Note 3)					
	Expenditure				
	Raising funds	7,108	6,276	13,384	14,035
	Charitable activities	86,523	198,393	284,916	334,125
	Total expenditure	93,631	204,669	298,300	348,160
Net income (expenditure) before transfers		(440)	29,939	29,499	48,427
Transfer of funds					
	Transfer of funds P&L	-	-	-	-
Net movement in funds		(440)	29,939	29,499	48,427
Reconciliation of funds					
	Total funds brought forward	55,580	138,406	193,986	145,559
	Total funds carried forward	55,140	168,345	223,485	193,986

BALANCE SHEET

CRESS

As at 31 December 2025

		2025	2024
Fixed assets			
	Tangible assets (Note 6)	-	65
Current assets			
	Debtors (Note 7)	15,330	8,198
	Cash at bank and in hand (Note 8)	209,363	188,398
		224,693	196,596
Creditors: amounts falling due within one year			
	Creditors (Note 9)	1,208	2,675
Net current assets (liabilities)		223,485	193,921
Total assets less current liabilities		223,485	193,986
Funds of the charity (Note 11)			
	Restricted funds	168,345	138,406
	Unrestricted funds	55,140	55,580
	Total funds	223,485	193,986

Approval

Signed on behalf of all the trustees

.....

Jeremy Metcalfe
Chair of Trustees

Date

01.03.26
.....

NOTES

to the Financial Statements

As at 31 December 2025

1. Accounting Policies

Basis of accounting

These accounts have been prepared under the historical cost convention with items recognised at cost or transaction value unless otherwise stated in the relevant notes to these accounts.

The accounts have been prepared in accordance with:

- the Statement of Recommended Practice: Accounting and Reporting by Charities preparing their accounts in accordance with the Financial Reporting Standard applicable in the UK and Republic of Ireland (FRS 102) issued on 16 July 2014;
- the Financial Reporting Standard applicable in the United Kingdom and Republic of Ireland (FRS102); and with
- the Charities Act 2011.

The charity constitutes a public benefit entity as defined by FRS 102.

Going concern

The Trustees consider that there are no material uncertainties about the charity's ability to continue as a going concern.

Income

Recognition of income

These are included in the Statement of Financial Activities (SoFA) when:

- the charity becomes entitled to the resources;
- it is more likely than not that the trustees will receive the resources; and
- the monetary value can be measured with sufficient reliability.

Offsetting

There has been no offsetting of assets and liabilities, or income and expenses, unless required or permitted by the FRS 102 SORP or FRS 102.

Grants and Donations

Grants and donations are only included in the SoFA when the general income recognition criteria are met.

The charity is not registered for VAT.

Tax reclaims on donations and gifts

Gift Aid receivable is included in income when there is a valid declaration from the donor. Any Gift Aid amount recovered on a donation is considered to be part of that gift and is treated as an addition to the same fund as the initial donation unless the donor or the terms of the appeal have specified otherwise.

Donated goods

Donated goods are measured at fair value (the amount for which the asset could be exchanged) unless impractical to do so.

Support Costs

The charity has incurred expenditure on support costs.

Notes to the Financial Statements
Year ended 31st December 2025

Income from interest, royalties and dividends

This is included in the accounts when receipt is probable and the amount receivable can be measured reliably.

Expenditure and liabilities

Liability recognition

Liabilities are recognised where it is more than likely than not that there is a legal or constructive obligation committing the charity to pay out resources and the amount of the obligation can be measured with reasonable certainty.

Governance and support costs

Support costs have been allocated between governance costs and other support. Governance costs comprise all costs involving public accountability of the charity and its compliance with regulation and good practice. Support costs include central functions.

Creditors

The charity has creditors which are measured at settlement amount less any trade discounts.

Assets

Tangible fixed assets for use by the charity

These are capitalised if they can be used for more than one year, and cost at least £1,000. They are valued at cost. The depreciation rates and methods used are as follows:

Account	Method	Rate
Equipment	Reducing balance	25%

Debtors

Debtors (including trade debtors and loans receivable) are measured on initial recognition at settlement account after any trade discounts or amount advanced by the charity. Subsequently, they are measured at the cash or other considerations expected to be received.

Fund structure

Unrestricted income funds are general funds that are available for use at the trustees' discretion in furtherance of the objectives of the charity.

Restricted income funds are those donated for use in a particular area or for specific purposes, the use of which is restricted to that area or purpose.

Transactions in foreign currency

Transactions in foreign currency are translated into the Charity's functional currency at the spot rate applicable on the day of each transaction. Foreign currency balances in the balance sheet are translated at the rate applicable on the reporting date and exchange differences are included in the statement of financial activities.

Notes to the Financial Statements

Year ended 31st December 2025

		Unrestricted Funds	Restricted Income Funds	2025	2024
2. Analysis of income					
	Donations and legacies				
	Donations and gifts	80,685	114,501	195,186	213,324
	Gift Aid	5,811	21,348	27,159	25,166
	General grants provided by other charities	5,000	98,759	103,759	155,734
	Total donations and legacies	91,496	234,608	326,104	394,224
	Other trading activities				
	Events and merchandise	1,508	-	1,508	2,003
	Total other trading activities	1,508	-	1,508	2,003
	Income from investments				
	Interest income	187	-	187	360
	Total income from investments	187	-	187	360
	Total income	93,191	234,608	327,799	396,587
	Total income in the previous year	98,210	298,377	-	396,587
		Unrestricted Funds	Restricted Income Funds	2025	2024
3. Analysis of expenditure					
	Raising funds				
	Expenditure on raising funds	7,108	6,276	13,384	14,035
	Total raising funds	7,108	6,276	13,384	14,035
	Charitable activities				
	Programme costs	71,569	190,059	261,628	306,367
	Support costs	14,954	8,334	23,288	27,758
	Total charitable activities	86,523	198,393	284,916	334,125
	Total expenditure	93,631	204,669	298,300	348,160
	Total expenditure in the previous year	96,686	251,474	-	348,160

Notes to the Financial Statements

Year ended 31st December 2025

	Unrestricted funds	Restricted income funds	2025	2024
4. Programme costs				
Trauma counselling	2,523	371	2,894	4384
Clinic and community healthcare	16,060	38,035	54,095	47102
Christian discipleship	3,035	8,946	11,981	19491
Education fees and support	7,695	45,515	53,210	57,791
Livelihoods training and support	11,678	35,355	47,033	43,183
Coordination and management	30,578	61,837	92,415	134,686
Total	71,569	190,059	261,628	306,637
5. Support costs				
Governance	-	-	-	-
Office and accountancy support	2,754	8106	10,860	11,810
IT software and consumables	2,060	-	2,060	3,135
Office expenses	46	228	274	347
International travel	6,386	-	6,386	12,311
Others	3,708	-	3,708	155
Total	14,954	8,334	23,288	27,758

Notes to the Financial Statements
Year ended 31st December 2025

6. Tangible fixed assets					
		Equipment		Total	
Cost					
	At 1 January 2025	650		650	
	At 31 December 2025	650		650	
Depreciation					
	At 1 January 2025	585		585	
	Charge for year	65		65	
	At 31 December 2025	650		650	
Net Book Value					
	At 31 December 2025	0		0	
	At 31 December 2024	65		65	
		Unrestricted income funds	Restricted income funds	2025	2024
7. Debtors					
	Prepayments and accrued income	15,330	-	15,330	8,198
8. Cash at bank and in hand		41,018	168,345	209,363	188,398
9. Creditors					
	Accruals and deferred income	1,208	-	1,208	2,675

Notes to the Financial Statements

Year ended 31st December 2025

11. Charity funds		Balance at	Income	Expenditure	Transfers	Balance at
		1 January 2025				31 December 2025
Unrestricted funds						
	Contingency	18,899	-	-	-	18,899
	General	8,430	81,891	(90,031)	26,142	26,432
Designated funds						
	Vehicle replacement fund	3,685	400	-	-	4,085
	Programme costs	24,566	10,900	(3,600)	(26,142)	5,724
	Total	55,580	93,191	(93,631)	-	55,140
Restricted funds						
	Big Give	17,201	33,519	(17,633)	-	33,087
	CATT training	366	8,000	(1,030)	-	7,336
	Christian discipleship	18,211	23,300	(19,292)	-	22,219
	Clinic equipment and running costs	32,382	32,630	(34,733)	-	30,279
	Clinic medicine	1,374	0	(1,490)	-	(116)
	Clinic health projects	5,133	6,750	(8,262)	-	3,621
	Education	35,601	48,039	(49,500)	-	34,140
	General office costs in Uganda	5,499	750	(3,971)	-	2,278
	Livelihoods	10,588	27,329	(18,646)	-	19,271
	Salaries	5,357	54,291	(45,348)	-	14,300
	Savings groups	5,724		(3,799)	-	1,925
	Vehicle maintenance	970		(965)	-	5
	Total	138,406	234,608	(204,669)	-	168,345
Total funds		193,986	327,799	(298,300)	-	223,485

Notes

The Designated Funds represent unrestricted income funds that have been provisionally set aside to provide for replacement vehicles for the operations in Uganda, and certain other salaries and expenses in the coming year in order to ensure continuity of essential coordinating services provided by the implementing partner agency.

The Restricted Income Funds represent grants and other donations that have been specifically raised for certain elements of the development programme in Uganda.

The Education fund includes a sponsorship programme covering fees and other educational expenses for a number of school and university students in the community.

The salaries fund includes grants and sponsorship for key staff and project coordinators in the CRESS Africa Foundation our implementing partner organisation in Uganda..

Notes to the Financial Statements

Year ended 31st December 2025

		Balance at	Income	Expenditure	Transfers	Balance at
		1 January				31 December
		2024				2024
Unrestricted funds						
	Contingency	18,899	-	-	-	18,899
	General	2,815	79,216	(74,194)	593	8,430
	Designated funds					
	Vehicle replacement fund	3,685	-	-	-	3,685
	Programme costs	28,064	18,994	(22,492)	-	24,566
	Total	53,463	98,210	(96,686)	593	55,580
Restricted funds						
	Agriculture	4,018	8,626	(12,828)	184	-
	Big Give	3,938	25,767	(8,048)	(4,456)	17,201
	Bush schools fund	500	-	(508)	8	-
	CATT training	437	2,450	(2,521)	-	366
	Christian discipleship	11,059	30,500	(23,348)	-	18,211
	Clinic equipment and running costs	4,109	35,348	(7,075)	-	32,382
	Clinic medicine	5,789	-	(4,415)	-	1,374
	Clinic health projects	41	6,690	(1,598)	-	5,133
	Blackburn Diocese	1,206	30,487	(31,701)	8	-
	Education	19,378	64,139	(47,916)	-	35,601
	General office costs in Uganda	6,719	21,159	(22,379)	-	5,499
	Lent project	4,991	-	(5,219)	228	-
	Salaries		20,699	(10,111)	-	10,588
	Savings groups	22,898	52,512	(73,488)	3,435	5,357
	Travel	5724	-	-	-	5,724
	Vehicle maintenance	1289	-	(319)	-	970
	Total	92,096	298,377	(251,474)	(593)	138,406
Total funds						
		145,559	396,587	(348,160)	-	193,986

12. Transactions with trustees and related parties

During the year six trustees made donations totalling £12,968 (2024: £14,568) towards the normal activities of the charity.

One trustee was reimbursed £757 (2024: £4,514) for expenses incurred on behalf of the charity in the implementation of its activities. No other trustees have received any expenses or benefits from the charity during the year.

INDEPENDENT EXAMINER'S

Report to the Trustees of Christian Relief Education Skills and Sustainability CRESS
For the year ended 31 December 2025

I report to the Trustees on my examination of the accounts of the above charity (Christian Relief Education Skills and Sustainability) for the year ended 31 December 2025 which are set out on pages 24 to 33,

Responsibilities and basis of report

As the Charity's Trustees, you are responsible for the preparation of the accounts in accordance with the requirements of the Charities Act 2011 ("the Act"). I report in respect of my examination of the Charity's accounts carried out under section 145 of 2011 Act and in carrying out my examination, I have followed all applicable Directions given by the Charity Commission under section 145(5)(b) of the Act.

Independent examiner's statement

I have completed my examination. I confirm no material matters have come to my attention in connection with the examination which give me cause to believe that in, any material respect:

- the accounting records were not kept in accordance with section 130 of the Charities Act; or
- the accounts did not accord with the accounting records; or
- the accounts did not comply with the applicable requirements concerning the form and content of accounts set out in the Charities (Accounts and Reports) Regulations 2008 other than any requirement that the accounts give a 'true and fair' view which is not a matter considered as part of an independent examination.

I have no concerns and have come across no other matters in connection with the examination to which attention should be drawn in this report in order to enable a proper understanding of the accounts to be reached.

Henry Flint
.....

Henry Flint FCA
Mead House, High Road, Broad Chalke, Salisbury, Wiltshire, SP5 SEH

Date: 05.03.26
.....

STATEMENT

of Trustees' Responsibilities

The Trustees are responsible for preparing the Trustees' report and the financial statements in accordance with the United Kingdom Accounting Standards (United Kingdom Generally Accepted Accounting Practice) and applicable law and regulations. The law applicable to charities requires the Trustees to prepare financial statements for each financial year which give a true and fair view of the state of affairs of the charity and of the incoming resources and application of resources of the charity for that period. In preparing these financial statements, the Trustees are required to:

- select suitable accounting policies and then apply them consistently
- observe the methods and principles in the Charities SORP
- make judgements and estimates that are reasonable and prudent
- state whether applicable accounting standards have been followed, subject to any material departures disclosed and explained in the financial statements
- prepare the financial statements on the going concern basis unless it is inappropriate to presume that the charity will continue in business.

The Trustees are responsible for keeping proper accounting records that disclose with reasonable accuracy at any time the financial position of the charity and enable them to ensure that the financial statements comply with the Charities Act 2011, the applicable Charities (Accounts and Reports) Regulations, and the provisions of the constitution. The Trustees are also responsible for safeguarding the assets of the charity and hence for taking reasonable steps for the prevention and detection of fraud and other irregularities.

Declaration

The Trustees declare that they have approved the Trustees' report above.

Signed on behalf of the charity's Trustees



.....

Date: 01.03.26
.....

A woman in an orange shirt and patterned skirt stands under a large, leafy tree in a rural setting. The tree is covered in small, round, reddish-brown fruits. To the left, there are banana trees. The background shows a field of tall grass and some distant hills under a cloudy sky.

CRESS

**CHRISTIAN RELIEF
EDUCATION SKILLS AND
SUSTAINABILITY**

*CRESS would like to thank all our
supporters and donors for their support in 2025.*

CRESS
registered charity no. 1141343