

ANNUAL REPORT 2024

Building stronger, for a better future

registered charity no. 1141343



Knighton Manor, Broad Chalke, Salisbury, Wiltshire SP5 5EB
www.cressuk.org e: caroline.lamb@cressuk.org t: 01722 780789

CONTENTS

*since 2010 CRESS
has been helping the
South Sudanese
create self-sufficient,
sustainable and ethical
communities*

- 3 Vision, Mission & Values**
- 4 Charitable objectives**
- 5 Our work**
- 6 Message from the CEO**
- 9 Achievements**
- 14 Impact**
- 16 13 years of CRESS**
- 17 Making a difference**
- 18 Finance**
- 19 Strategic objectives**
- 20 Governance**
- 23 Charity details**
- 24 Accounts 2024**
- 34 Independent examiner's report**
- 35 Statement of trustees' responsibilities**



Revive Livelihood Group in Rhino Camp during a savings meeting



VISION, MISSION & VALUES

Mary's shop - CRESS provided her with a wheelchair and the knowledge and support to start her business



Christian Relief
Education Skills and
Sustainability

VISION

Holistically transformed
communities living self-
sufficient lives

MISSION

Educate and train displaced people
with the knowledge and skills to
empower them to establish self-
sustaining communities.

CORE VALUES

Christian
foundation
drives how we
operate and
our values

Steady
organic
growth taking
feedback and
learning on the
way

Based
on strong
personal
relationships in
Uganda and in
UK

Unique
blend of
development
and relief

Empower
key groups
such as
students, women,
farmers and
clergy through
education

Most
projects
have sustainable
outcomes with
the goal of them
becoming self-
supporting in
time

100%
local staff.
They know and
love their people
and will remain
with them

Strong
financial
accountability

CHARITABLE OBJECTIVES

Purpose

The prevention and relief of poverty, suffering, distress and ill-health and the advancement of education, self-sufficiency, sustainability and Christian discipleship in Africa by providing grants, items and services in such ways and such places as the trustees see fit, which includes but is not limited to:

(a) improving educational opportunities and standards through sponsorship

(b) improving primary health, trauma and maternal care through training and sponsorship, including the provision of a primary health care clinic;

(c) providing training and support for but not limited to agriculture;

(d) promoting community finance through the establishment of Savings Groups and the provision of loans, education and advice;

(e) equipping, training and supporting local clergy and lay church members

Livelihood Group photos:
arrival of tools and seeds, thinning of seedlings and share out at the end of a savings cycle and one tailoring business



OUR WORK

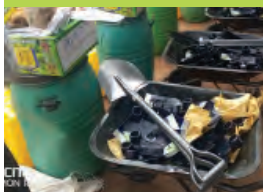


Strategy 1

Sustainable and equitable access to nutritious food

Project 1

Climate Smart & Nutrition Sensitive Agriculture



Tools, seeds & advice



Providing training and ongoing advice



Training Community Process Facilitators

Strategy 2

Promote economic wealth creation

Project 2

Economic Empowerment & Wealth Creation



Providing savings materials



Training Community Process Facilitators



Ongoing support for savings groups



Advice for individuals

Strategy 3

Improve health and wellbeing

Project 3

Preventive Community Health



Providing maternal care



Diagnosis & treatment



Outreach services

Project 3.2

CATT* Counselling & Awareness

Trauma Awareness



Helping young people



Strategy 4

Enable a functional & literate society

Project 4

Holistic & Inclusive Education



Provide support to enable children to get quality education opportunities



Exams success for candidates



Continued learning for CRESS staff

Strategy 5

Promote spirituality & moral integrity

Project 5

Community Discipleship and Evangelism



Build clergy capacity for discipleship through trainings, discipleship materials and transport

Project 5.2

Child Evangelism and Discipleship



Training for volunteer youth workers



Good news clubs, 5 days' clubs and school ministry

MESSAGE FROM THE CEO

This has been an exciting year for CRESS and was the third time CRESS has had to completely re-form in Africa in its 16 year history.

From January discussions and actions took place to set up as a legal Indigenous Non Governmental Organisation (INGO) in Uganda. The services of the legal firm BNM Associates in Kampala were engaged to work with CRESS in the UK and the team in Uganda.

An Executive Board was established with Ugandan Nationals – Dr. Nicholas Kaylebara (Board Chair) from Compassion, Dr Resty Nanyonjo (Vice Chair) from MSF and Kevin Atimango (Finance Director) from World Vision and Vincent Lubang (Company Secretary) a Lawyer. They all agreed to be on the board and had met with the UK team in November 2023. Nicholas agreed to be board chairman.

The services of Eaglelite Consultants was engaged to support and carry out the interviews for the soon to be legally recognised CRESS AFRICA. Six professional staff were engaged and given contracts and they have taken the CRESS projects on, enhancing and adapting them to fit the current needs.

CRESS AFRICA applied for and received permission to work initially in Rhino Camp. They combined the Agriculture and Savings Groups into their Livelihood Project. The Livelihood Project focuses on Community Savings and Credit Groups (CSCG) methodology, sustainable climate smart agriculture, mind set

Practical session making compost manure for the CPFs at their sustainable agriculture training at YWAM in August



change, financial literacy and entrepreneurship, and enhanced vocational skills. The work in Rhino camp started by training new Community Process Facilitators (CPFs), who mentor and encourage the groups. The CPFs are refugees themselves and live in the camps. Other NGOs bring in teams from Arua who do not speak the South Sudanese language or know the local land or communities. CRESS AFRICA is a refugee led indigenous NGO so the camp attendees have respect for CRESS AFRICA CPFs. When we visited in January 2025 we were delighted to see the fledgling groups thriving and putting to practice the principles of mind set change and climate smart agriculture. CRESS AFRICA has also been able to continue helping to manage the more mature groups in Mijale and Imvepi. We have been delighted with the feedback and photos from groups like Friendly Group and Morjita Mixed Group. They have been inspired to work not only with their own small businesses and gardens, but as groups have set up businesses like shops, computer/internet access, grinding mills and furniture loan businesses.

The other major change was in Christian Discipleship. CRESS AFRICA took the initiative to focus on a Child Evangelism Fellowship (CEF) programme of children's clubs enabling children to develop a strong foundation in Christian faith. CRESS has also been pleased to be able to support Bishop Data and Rev Jacob Karaba and their communities. I am really pleased we have been able to continue to support the spiritual needs of the refugee community.

I am immensely proud of the new CRESS AFRICA and all they have taken on and achieved in their first year, I look forward to our continued collaboration.

Cashie

The CRESS AFRICA team and UK Visitors from CRESS in the office garden in Arua



Main photo: Grace after family spacing training in 2022. Right Grace with her goats. Left below: Grace's Livelihood group at a share out meeting. Right below: Grace with her newly rendered house.



Meet Grace

While in South Sudan, Grace wasn't engaged in any business and was farming for family food provision only. She hadn't been involved in any Savings or Agriculture programmes before and hadn't received training from community midwife services. She fled South Sudan in 2017 and became a refugee in northern Uganda. Most of the refugee community there lived under the \$2 a day mark and lacked basic infrastructure and resources. It was impossible for the Ugandan government to address the basic needs of the 1.4 million South Sudanese refugees who fled to the area.

Grace was one of the refugees who joined a CRESS Savings and Agriculture Group and in 2019 she set herself up a business selling beans and groundnuts. She was living in a grass-thatched house with her husband and children. CRESS aims to educate and train South Sudanese refugees and local Ugandans with the knowledge and skills to empower them to establish self-sustaining communities so also offers group members family spacing and other healthcare training for holistically transformed lives.

Now in 2025, with 10 in her household to provide for, she has built a house and bought two mattresses, she pays for her children's education and needs, has 8 goats and a pig, which has just produced it's first piglets. Her other business is in buying and selling food items (beans, sesame, maize, cabbage, tomatoes, onions, coffee, sorghum, cassava). Her average monthly savings are \$28 and from the group her last share out was \$325.

ACHIEVEMENTS 2024

Livelihood Project Savings Groups

Savings groups act like a community bank. Refugees put their money in and can then ask for loans for business or the needs of their family. They repay over time with interest. The groups also are encouraged to be involved in projects together to raise funds which are distributed yearly.

Liu Group with their grain grinding mill

SUPPORTING

81

LIVELIHOOD GROUPS
WITH 2,331 MEMBERS
IN 2024

TOTAL
SOCIAL FUNDS

£8,633

USED FOR MEDICAL
BILLS, SCHOOL FEES,
SOCIAL SUPPORT &
COMMUNITY
EVENTS



MEMBERS
IN BUSINESS

1,140

INC. SMALL SHOPS,
CHARCOAL, VEG,
SALONS, HOTELS,
MONEY

AVERAGE
SAVINGS PER
GROUP

£2,048

THESE ARE USED
FOR MEMBER
LOANS

WE
SUPPORTED

9

CPFS (COMMUNITY
PROCESS FACILITATORS)
TO SUPPORT THE
GROUPS

ALL
9

CPFS TRAINED IN DATA
COLLECTION & REPORTING,
MINDSET CHANGE,
ENTREPRENEURSHIP &
FINANCIAL
LITERACY

GROUPS
MEMBERS ARE
79.9%

FEMALE
1.45% HAVE A
DISABILITY OR
HIV



Kiden Annet with her sewing machine



Happy Saving Group peeling groundnuts together

Uba Betty is from Mijale and part of Hope Savings and Loans group. She is 50 years-old with 10 family members to support. She sells food items, such as tomatoes, maize, rice, beans, onions, etc. She makes of profit of 60,000 UGX (~£13) per month towards her family's wellbeing.



* Savings Groups are also known as Village Savings and Loan Associations VSLAs

ACHIEVEMENTS 2024

Livelihood Project Agriculture

The aim of our agriculture training is to equip learners with the skills of sustainable organic farming practices that will enable them to improve their families' food security, nutrition and income.

31
GROUPS TRAINED IN
2024 IN SUSTAINABLE
AGRICULTURE WITH
805
MEMBERS

WORKING
WITH
463
INDIVIDUALS WHO HAVE
THEIR OWN GARDENS
FOR AGRICULTURE
2024

TREE
SEEDLINGS
DISTRIBUTED
2,465
IN 2024
IN TOTAL NOW
9,000+ TREES

GROUPS
WORKING
158
VEGETABLE
GARDENS IN
2024



Tree planting
in Rhino camp
2024



CPF training

In August, Community Process Facilitators (CPFs) from Rhino Camp, Mijale and Imvepi undertook a week of training. Climate resilience in agriculture is the ability of communities and farmers to adapt to climate change while maintaining or improving productivity. The training not only provided new information but also built on the existing skills/indigenous knowledge of the participants. The CPFs were also given training in how to train members of their livelihood groups in these practices.

2,465 fruit and firewood trees were delivered to 9 churches in Rhino Camp. They include grafted mango and orange trees, and soursop and calliandra saplings.

During distribution, training is given so that the tree seedlings get the best possible start and are protected from grazing animals and other damage. The trees have been planted in time for the upcoming rainy season.



ACHIEVEMENTS 2024



"I never knew how much God loved me until I started attending the good news club. I learnt that God created me special and wants a personal relationship with me and that I can get to know him better.

I felt so happy and peaceful when I invited Jesus into my heart. I can't wait to tell my friends and family about God's love and forgiveness" 11 year old girl's response. Thank you for showing me the truth about God's love. I am so happy.

Christian Discipleship

SCHOOL MINISTRY IN 2 SCHOOLS
339
CHILDREN REACHED

IN RHINO CAMP
13
GOOD NEWS CLUBS FOR CHILDREN

25 BIBLES
20 HYMN BOOKS
VOLUNTEER YOUTH WORKERS WORK

SOME
992
CHILDREN GIVING THEIR LIVES TO CHRIST

CHILDREN REACHED
6,438
IN GOOD NEWS CLUBS, SUNDAY SCHOOLS & SCHOOL MINISTRIES

VOLUNTEER YOUTH WORKERS
15
TRAINED TO RUN GOOD NEWS CLUBS



Volunteer youth worker training

Supporting Christian Communities

"I want to express my deepest gratitude for the Discipleship materials, Bibles, hymns, and other resources you have generously provided. These gifts are an immense blessing for me and everyone who will benefit from them as we seek to grow deeper in our faith and knowledge of God's Word."

CRESS has been able to support communities in Bidi Bidi and Imvepi camps with materials, technology and transport support.



LOUD HAILER REPAIRED
1
IN IMVEPI SO GOOD NEWS IS BROADCAST

PROVIDED COUNSELLING & PRAYER FOR THE SICK & THOSE IN NEED

ESTABLISHED
2
FELLOWSHIP GROUPS FOR YOUNG WOMEN

OVER
38,000
IN IMVEPI RECEIVING DISCIPLESHIP AND
52,000
REACHED IN BIDIBIDI & HOST COMMUNITY

TRAINED LAY READERS
26
95 EVANGELISTS
46 BIBLE STUDY LEADERS

44 BIBLES
56 HYMN BOOKS
FOR REFUGEES IN BIDIBIDI & IMVEPI CAMPS

DELIVERED MOTORCYCLES
2
SO CLERGY CAN TRAVEL IN THE CAMPS

FORMED
53
BIBLE STUDY GROUPS

ACHIEVEMENTS 2024

Clinic, CATT* & outreach



Asaba in the clinic scanning a mother and below 2 mothers with mosquito nets



The new clinic we fund is in Koboko, Northern Uganda. Services have been opening throughout the year from April, maternal services in July, ultrasound scanning in August, field midwife visits from November.

MIDWIFE SUPPORT FROM THE CLINIC

The clinic aims to promote awareness, understanding, and safe and healthy practice for mothers. Asaba, our Field Midwife travels many miles to reach women in their own remote homes and communities. With her teaching, she also gives out mosquito nets and 'mama kits', which contain necessary supplements for mothers' health as well as everything they need for delivery and taking care of a newborn.

"I lost my child six months back and today I am three months pregnant. As being a mother of four children and all girls, I lost my baby boy because my husband thought I would produce another baby girl again and he refused to give me money for shopping items needed at hospital, so due to the fear I delivered at home and my baby died. I must say thank you so much CRESS and the clinic for this training and for giving us Mosquito nets, Mama kits, Iron pills and the deworming tablets. I really appreciate this training so much because it has helped and changed a lot in our lives as expectant mothers and I wish such trainings should continue like this"

IN 2024
THE CLINIC SAW

1,718

ANTENATAL CLASSES BABIES DELIVERED

120

17

ULTRASOUND SCANS

75

RUMPS
TRAINING FOR

212

IN 2 SCHOOLS
2024

RURAL
ANTENATAL
SERVICES DELIVERED TO

50

PREGNANT REFUGEE
MOTHERS
IN NOV 24

CATT*

Trained CATT* Counsellors to continue their valuable work de-traumatising child refugees, in rural Northern Uganda. Most of the young people helped are working their way through difficulties brought on by child neglect, lack of basic needs, rape, defilement, dropping out of school and suicide attempts.

A highly successful community awareness day on PTSD (Post Traumatic Stress Disorder) and CATT was held, with good attendance and participation.

**RUMPS Reusable Menstrual Pads

*CATT Children's Accelerated Trauma Therapy



PTSD
& SUPPORT
OUTREACH FOR

64

ORPHAN
CHILDREN

TRAUMA
THERAPY

7

SOUTH SUDANESE PEOPLE
TRAINED
TO WORK WITH
TRAUMATISED
REFUGEE
CHILDREN

CATT*
COUNSELLORS
SUPPORTED

392

CHILDREN IN
2024

12

ACHIEVEMENTS 2024

PRIMARY
& SECONDARY
EDUCATION FOR

53

REFUGEE
STUDENTS

PRIMARY
LEAVERS EXAMS
TAKEN & PASSED

7

IN 2024

UGANDAN
CERTIFICATES OF
EDUCATION* TAKEN

5

Below: Nancy who needed a hearing aid to aid her midwifery studies.



SUPPORTING

8

THROUGH FULL
TIME TERTIARY
EDUCATION

Scopas has been visiting schools, collecting student report cards and keeping in touch with students. This means that if they are struggling can be helped with intervention strategies. A bursary fund has been set up to enable this.

In 2024 students received coaching, medical and CATT support.



Evaline Poni graduated with top honours earning her Diploma in Nutrition and Clinical Dietetics.

Evaline has benefited from the Sponsorship program for the past 10 years since she started in 2015. She feels well-prepared to make a difference by supporting malnourished children and mothers in the community.

Education Sponsorship



CRESS CELEBRATES OUTSTANDING PLE 2024 RESULTS

Written by Scopas Murye - Education Officer

We are excited to share the amazing success of our CRESS-sponsored pupils in the 2024 Primary Leaving Examinations (PLE)! These incredible young learners have shown us the power of hard work, determination, and the right support system.

Here's a look at their phenomenal achievements:

- Jovan Gogo Mazina: Division 1 with 5 Aggregates – Exceptional!
- Juan Anne Murye: Division 1 with 9 Aggregates – Brilliant!
- Kenyi Ivan Julious: Division 1 with 12 Aggregates – Amazing!

These bright stars are a true testament to the transformative power of education. A special thank you to all the generous individuals and stakeholders that support our mission. Your efforts are making a lasting difference in these children's lives and the broader community.

*PLE Primary Leaving Examination

**UCE Uganda Certificate of Education equivalent to GCSEs

CRESS' 2024 strategy aims to help tackle the underlying causes of poverty and social injustice, as part of global efforts to meet the Sustainable Development Goals (SDGs).

1 NO POVERTY



In the Livelihood Groups trained in agriculture, vegetables are grown and excess harvest sold at the markets. This income, however small, helps families enormously and is used for school fees and vital medicines. Once immediate expenses are met, group members then usually start building/renovating their houses, and start investing in their small businesses, which gives a level of financial security.

The 81 Livelihood Groups also help break the cycle of poverty by delivering loans, money and skills training to their 2331 members, representing over 17000** within their households, which in turn provides them with financial security and the ability to afford family needs.

We gave 212 refugee young women RUMPS* training means they can save money on costly disposable menstrual pads and they can continue their lives at school and work.

2 ZERO HUNGER



CRESS aims to increase food security through its Livelihood groups and agriculture training. Our training focuses on sustainable climate smart agriculture using organic regenerative practices such as composting, tree planting and soil conservation.

Planting fruit and other tree species for garden and field protection to enhance the resilience of food security is part of our agriculture plan, with over 9000 trees now planted. The species mix includes quick maturing papaya, nutrient rich avocado and nitrogen fixing calliandra. On older trees fruits are already maturing and improving nutrition especially during seasons of low food availability.

Selling excess fruit, vegetables and crop production provides income for all 2331 trained group members and their families. This provides increased food security for over 17000** individuals.

3 GOOD HEALTH AND WELL-BEING



In 2024, CRESS funded a Healthcare Clinic in Koboko which treated 1718 refugees and poor Ugandans. Malaria, typhoid, peptic ulcers, intestinal and urinary tract infections were most commonly seen in the clinic.

The ultrasound equipment provided a diagnosis for 75 patients. The clinic's midwives helped safely deliver 17 babies and saw 170 mothers for antenatal clinics both in the clinic and in the refugee settlements.

300 Mosquito nets were distributed and mothers trained in malaria prevention, family spacing, water sanitation and hygiene.

Our CATT programme helped 392 children cope with difficult life situations.

Well-being is greatly improved by the Livelihood Groups. Members feel a huge sense of belonging and hope which was previously lacking.

CRESS prefers to talk about our contribution to change, rather than claiming our work alone led to any given change.

*Education Response Plan for Refugees and Host Communities in Uganda (2018-2022) - www.edu-links.org

4 QUALITY EDUCATION



CRESS education sponsorship programme has supported young people in the refugee camps to access education including 8 students in tertiary education. 53 children have been supported to attend primary school and secondary level.

In 2024 CRESS has also supported two staff members to continue their education through night classes enabling them to fulfil their potential.

Continuing training for our staff and volunteers this year has included our CPFs and Youth Workers who then pass their knowledge on in the local language to members of the Livelihood Groups and Good News Clubs.

5 GENDER EQUALITY



79% registered Livelihood Groups members are female. They have been taught skills to improve their nutrition and financial security, enabling them to increase levels of empowerment and equality to become a force for change in their communities. 1398 have been able to access loans from their groups and 937 women are engaged in business.

CRESS has supported women via the primary healthcare clinic outreach maternity services. Our field midwife has delivered support and knowledge in the field to pregnant women to keep them healthy during their pregnancy and birth and to help them consider child spacing in their families.

CRESS has always seen good gender balance in its education sponsorship. Currently, 30 out of 61 of our sponsored students are female.

8 DECENT WORK AND ECONOMIC GROWTH



Through the 81 Livelihood Groups, CRESS has helped 1,030 group members to set up and develop their own businesses and others involve themselves in the group businesses.

Individual businesses vary from shop keeping to tailoring, making charcoal and food to growing food and they all generate their own income which they can then spend locally to improve their economy.

As a group, they can often build larger businesses, these include buying and renting grain grinding mills, hire of furniture, computer hire and larger shops.

14 YEARS OF CRESS

2010

2011

- > 1st Chalke Valley trip & Clergy conference
 - > 11 Clergy treated for River blindness
 - > 20 children sponsored
- > Small 2 roomed clinic opens in Liwolo

2014

- > Chalke Valley Lent Project raises £20,000 for building 8 roomed clinic in Liwolo

2016

- > 35 women form first agriculture project
 - > Solar fridge arrives at the clinic
 - > People start to flee to Uganda

2018

- > Clinic accredited with Ugandan Health Authority
 - > Agriculture training re-starts

2020

- > Supported refugees through COVID lockdown with food, PPE, home-schooling and Loud Speaker Project
- > Zoom for meetings with DOL & UK events

2022

- > Clinic oversaw eye health clinic & surgery
- > Pastor and youth conferences run by DoL
- > Fruit tree survey show 2,000 trees thriving
- > 70 Savings groups with 2,094 members

2024

All in this report...

2013

- > 85 water filters given out
- > First agricultural training
- > Women's conference attended by 200 women in Kajo Keji led by 6 women from UK

2015

- > New clinic opened by CRESS team
- > Fred Taban comes to the UK to study at All Nations College

2017

- > War means many from Kajo Keji flee to Uganda
- > CRESS moves to Uganda - office opens Arua
- > Joseph Aba becomes Bishop of the newly created Diocese of Liwolo
- > CRESS makes Diocese of Liwolo their partner
- > Clinic opens in September in Mijale

2019

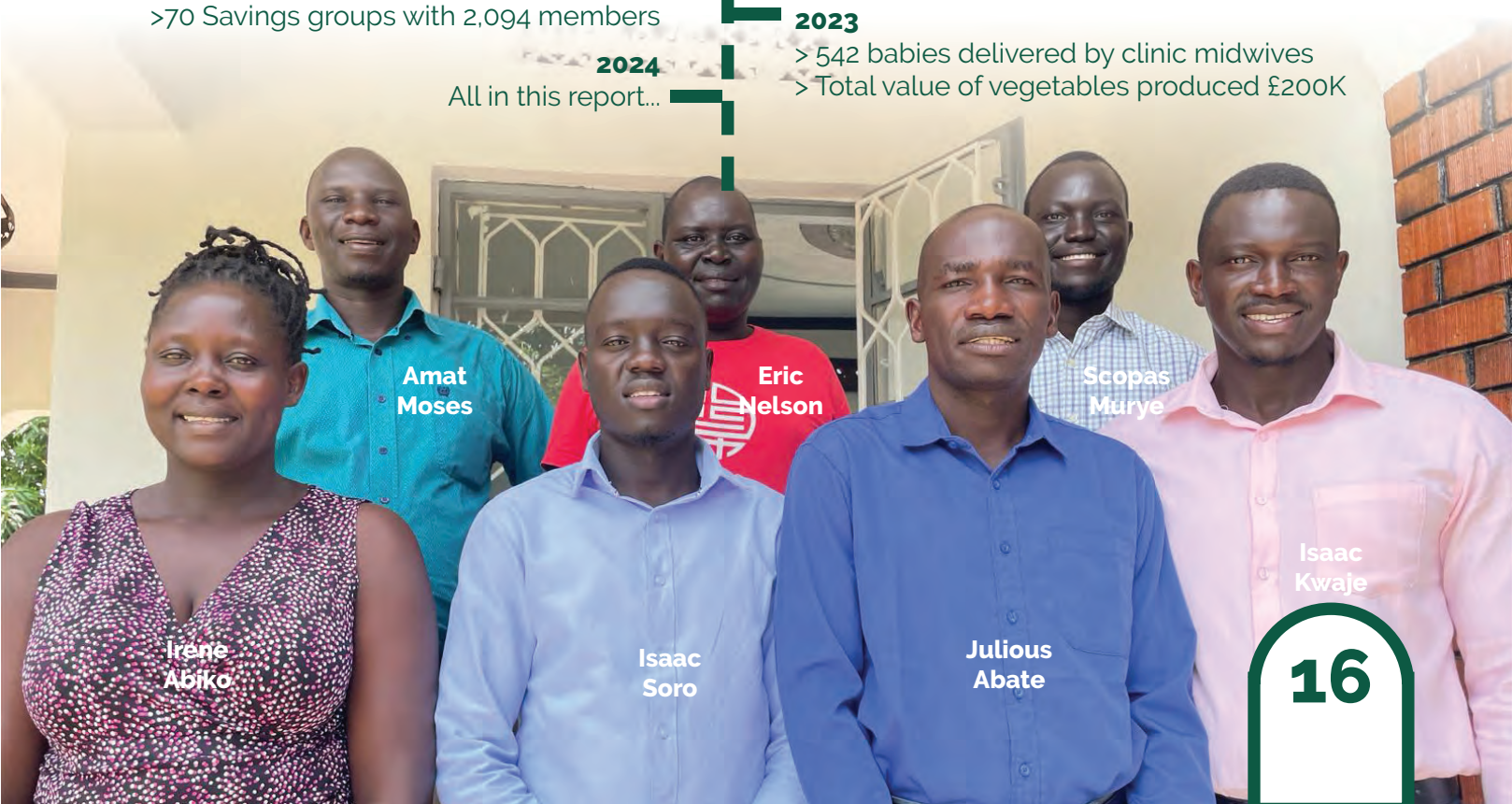
- > 41 Savings groups started with 1,041 members
- > Clinic did hygiene and RUMPS training, co-ordinated CATT Counsellors & saw 7862 patients
- > Bishop Joseph leads a student conference

2021

- > Savings groups now have 1,570 members.
- > 76 pastors included within our agriculture training in addition to 320 group members.

2023

- > 542 babies delivered by clinic midwives
- > Total value of vegetables produced £200K



MAKING A DIFFERENCE

COMMUNITY SUPPORT

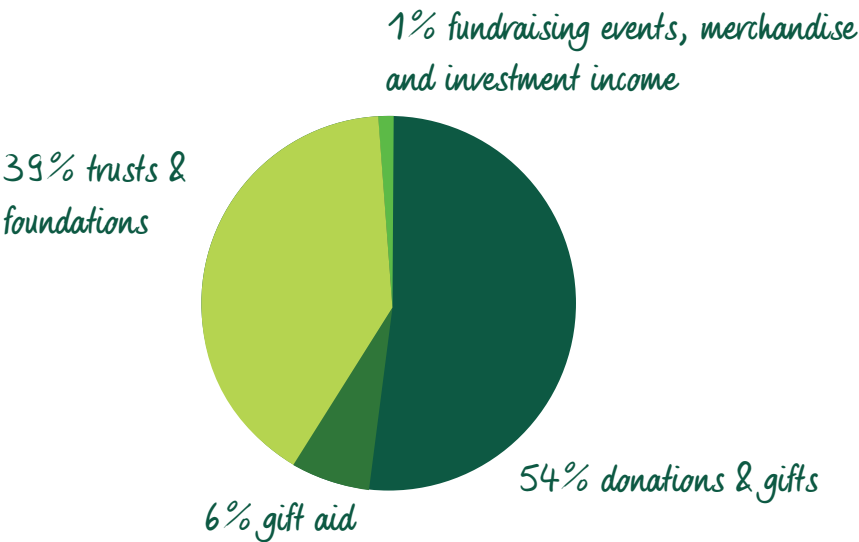


CRESS was nominated by the archdeacons as one of the Diocesan projects for the Diocese of Blackburn for 2024

FINANCE

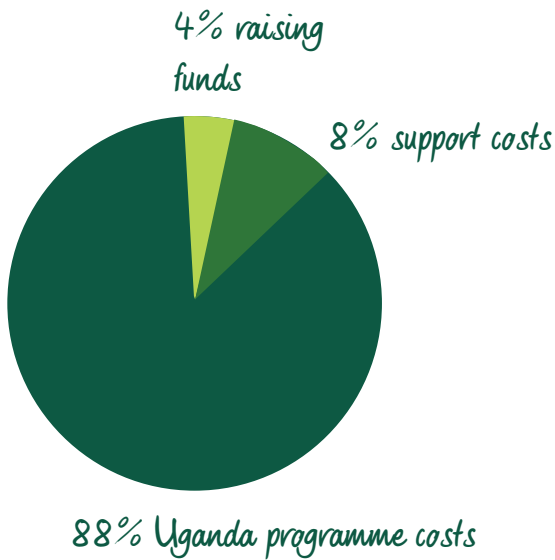
Income

Total: £396,587



Expenditure

Total: £348,160



Finance highlights of CRESS' 2024 Accounts



Duro Betty from Morjita Mixed Savings and Loans Group B is 28 years old with 2 family members. Betty sells various products including vegetables.

She borrowed 150000 UGX, she makes 60,000 UGX per month. She is able to support her family buying healthy food, and she can pay for her children to go to school.

STRATEGIC OBJECTIVES

The table below sets out our plans for the coming year:

Strategic Objective	Plans 2025-2030
Sustainable and equitable access to nutritious food	<ul style="list-style-type: none"> To increased household food and nutrition security, measured by the number of meals eaten per household per day, their dietary diversity and adequate quantity. Beneficiary households should have adequate and nutritious food for all household members at all times, this should impact 54,000 individuals. Increase to 300 Livelihood Groups with 900 lead farmers trained to support others in their groups.
Promote economic wealth creation	<ul style="list-style-type: none"> To economically empower vulnerable women and youth to increase household wealth and improve their market-relevant skills for better economic opportunities. Increase to 300 Livelihood Groups benefitting 45,000 people. 7,500 micro-enterprises being established.
Improve health and wellbeing	<ul style="list-style-type: none"> To improve quality of life and household work productivity through effective preventive health practices and increased knowledge of sexual and reproductive health.
Enable a functional & literate society	<ul style="list-style-type: none"> To increase access to and retention in learning and training opportunities. Increase to 100 children from vulnerable families having sponsored education 500 vulnerable youths to gain vocational skills training
Promote spirituality & moral integrity	<ul style="list-style-type: none"> To nurture the spiritual and moral well-being of refugee and host communities through holistic child evangelism and community discipleship, empowering them to lead self-sufficient and purpose-driven lives. 45,000 refugees and host community members nurtured in spiritual and moral well-being through sharing of the word of God
Diversify income generation and boost fundraising	<ul style="list-style-type: none"> To strengthen CRESS's fundraising capacity. To continue improving on the Big Give success and raise £20,000+ per year. To engage 2 volunteers to run fundraising events for CRESS each year.

GOVERNANCE

Governance

CRESS is an unincorporated organisation. Its governing document is a trust deed dated 12th of April 2011, as amended by resolutions dated 23rd of January 2013 and 11th of November 2019.

CRESS recruits Trustees in the UK with the skills and experience to ensure the charity carries out its activities effectively and efficiently. New Trustees are appointed by existing Trustees.

The Trustees take an active interest in operational activities and remain informed through regular reports and three full Board meetings a year.

2024 Trustees

Chair of Trustees

Jeremy Metcalfe OBE

Trustees

Caroline Lamb MA Oxon. PGCE.

Dr Jonathan Cullis MA (Cantab) MBBS. MD. FRCP. FRCPATH.

Dr Jane Guy MB,BS. MRCP. DRCOG.

Anthony Belchambers (Inner Temple)

John K E Broadley, MA Oxon, CMG.

Specialist Volunteer Advisers

Agricultural Adviser

Olivia Jane Jones

Jonathan Woolven

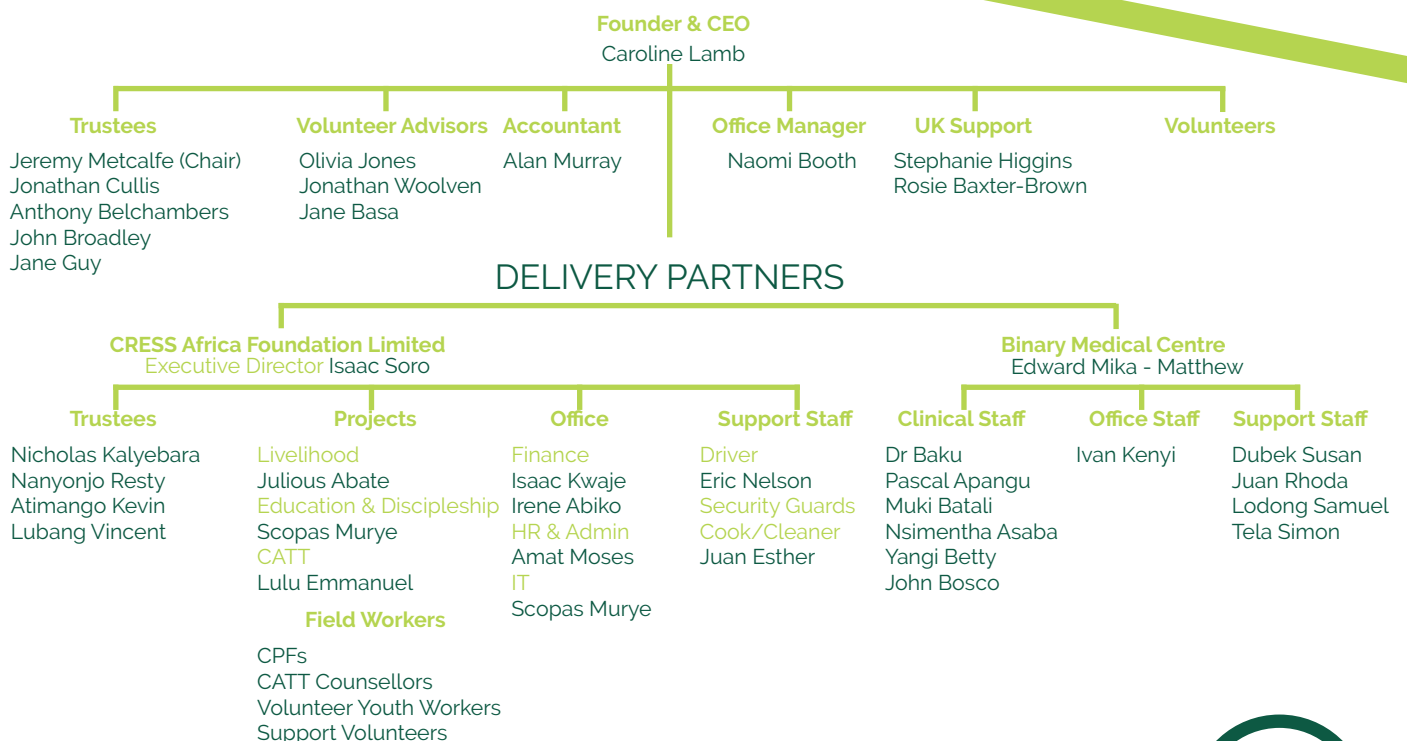
South Sudan Adviser

Namurye Jane Basa

Volunteer Coordinator & Strategy Assistant

Jamie Melville

ORGANISATION STRUCTURE





Clinic Staff in July 2024

Public Benefit

The Trustees confirm that they have complied with the requirements of section 4 of the Charities Act 2011 to have due regard to the public benefit guidance published by the Charity Commission for England and Wales. This Annual Report provides a summary of our main activities undertaken in 2024 demonstrating our charitable purpose for the public benefit.

Risk Management

The Trustees have a risk register, important risks are discussed at trustee meetings. The register is reviewed annually.

Safeguarding

The Trustees believe that the welfare of children and vulnerable individuals is paramount. The charity operates within the framework of its safeguarding policy, which clearly states how incidents and allegations will be handled should they arise.



CATT trauma training session



Financial Overview

CRESS' financial position is shown in the attached accounts.

Donations from regular supporters continued to be strong during the year and a number of one-off gifts from individuals and charitable trusts resulted in an increase in income overall to £396,587 (2023: £318,277).

Expenditure on the Uganda programme showed an increase over the previous year at £306,367 (2023: £247,168). Income and expenditure were both higher than usual due to a short term funding partnership with the Diocese of Blackburn which raised £31,693.

The charity achieved a small surplus of £2,117 on unrestricted funds with reserves carried forward of £55,580 providing a secure start to the new year. Restricted reserves grew by £46,310 to £138,406 which will ensure continuity of the Uganda programme well into 2025.

Reserves

CRESS understands that our supporters want our resources to be used in the most efficient and effective manner achieving maximum impact for our beneficiaries. The Trustees aim to maintain unrestricted bank balances at a level which will provide sufficient funds to ensure that charitable activities, support and governance costs are covered for 3 months. The Trustees believe that the scale of our current operations requires no change to the reserves policy. However, they will continue to review the situation as the charity develops.

29-year old Kiden Rose of Paji Kido Livelihood Group



CHARITY DETAILS

Charity

CRESS

Christian Relief Education Skills and Sustainability

Registered Charity Number

1141343

Principal Address

Knighton Manor Farm, Knighton Road, Broad Chalke, Salisbury, Wiltshire, SP5 5EB

Bankers

HSBC Bank Plc Blandford Forum

17 Market Place, Blandford Forum, Dorset, DT11 7AG

Independent Examiner

H Flint FCA

Mead House, High Road, Broad Chalke, Salisbury, Wiltshire, SP5 5EH

Accountant

Alan Murray

72 Churchfield Road, Poole, Dorset BH15 2QP

ANNUAL ACCOUNTS

CRESS

For the year ended 31 December 2024

Registered charity number: 1141343

CONTENTS

25-33	Statements of Financial Activities
34	Independent Examiners report to the Trustees
35	Statement of Trustee responsibilities

STATEMENT

of Financial Activities

Year ended 31st December 2024

		Unrestricted Funds	Restricted Income Funds	2024	2023
Incoming resources (Note 2)					
	Income and endowments				
	Donations and legacies	95,847	298,377	394,224	315,979
	Other trading activities	2,003	-	2,003	2,298
	Investments	360	-	360	-
	Total income and endowments	98,210	298,377	396,587	318,277
Resources expended (Note 3)					
	Expenditure				
	Raising funds	14,035	-	14,035	23,905
	Charitable activities	82,651	251,474	334,125	269,857
	Total expenditure	96,686	251,474	348,160	293,762
Net income (expenditure) before transfers		1,524	46,903	48,427	24,515
Transfer of funds					
	Transfer of funds P&L	593	-593	-	-
Net movement in funds		2,117	46,310	48,427	24,515
Reconciliation of funds					
	Total funds brought forward	53,463	92,096	145,559	121,044
	Total funds carried forward	55,580	138,406	193,986	145,559

BALANCE SHEET

CRESS

As at 31 December 2024

		2024	2023
Fixed assets			
	Tangible assets (Note 6)	65	87
Current assets			
	Debtors (Note 7)	8,198	7,077
	Cash at bank and in hand (Note 9)	188,398	139,345
		196,596	146,422
Creditors: amounts falling due within one year			
	Creditors (Note 8)	2,675	950
Net current assets (liabilities)		193,921	145,472
Total assets less current liabilities		193,986	145,559
Funds of the charity (Note 11)			
	Restricted funds	138,406	92,096
	Unrestricted funds	55,580	53,463
	Total funds	193,986	145,559

Approval

Signed on behalf of all the trustees

.....

Jeremy Metcalfe
Chair of Trustees

Date

27.03.25.....

NOTES

to the Financial Statements

As at 31 December 2024

1. Accounting Policies

Basis of accounting

These accounts have been prepared under the historical cost convention with items recognised at cost or transaction value unless otherwise stated in the relevant notes to these accounts.

The accounts have been prepared in accordance with:

- the Statement of Recommended Practice: Accounting and Reporting by Charities preparing their accounts in accordance with the Financial Reporting Standard applicable in the UK and Republic of Ireland (FRS 102) issued on 16 July 2014;
- the Financial Reporting Standard applicable in the United Kingdom and Republic of Ireland (FRS102); and with
- the Charities Act 2011.

The charity constitutes a public benefit entity as defined by FRS 102.

Going concern

The Trustees consider that there are no material uncertainties about the charity's ability to continue as a going concern.

Income

Recognition of income

These are included in the Statement of Financial Activities (SoFA) when:

- the charity becomes entitled to the resources;
- it is more likely than not that the trustees will receive the resources; and
- the monetary value can be measured with sufficient reliability.

Offsetting

There has been no offsetting of assets and liabilities, or income and expenses, unless required or permitted by the FRS 102 SORP or FRS 102.

Grants and Donations

Grants and donations are only included in the SoFA when the general income recognition criteria are met.

The charity is not registered for VAT.

Tax reclaims on donations and gifts

Gift Aid receivable is included in income when there is a valid declaration from the donor. Any Gift Aid amount recovered on a donation is considered to be part of that gift and is treated as an addition to the same fund as the initial donation unless the donor or the terms of the appeal have specified otherwise.

Donated goods

Donated goods are measured at fair value (the amount for which the asset could be exchanged) unless impractical to do so.

Support Costs

The charity has incurred expenditure on support costs.

Notes to the Financial Statements

Year ended 31st December 2024

Income from interest, royalties and dividends

This is included in the accounts when receipt is probable and the amount receivable can be measured reliably.

Expenditure and liabilities

Liability recognition

Liabilities are recognised where it is more than likely than not that there is a legal or constructive obligation committing the charity to pay out resources and the amount of the obligation can be measured with reasonable certainty.

Governance and support costs

Support costs have been allocated between governance costs and other support. Governance costs comprise all costs involving public accountability of the charity and its compliance with regulation and good practice. Support costs include central functions.

Creditors

The charity has creditors which are measured at settlement amount less any trade discounts.

Assets

Tangible fixed assets for use by the charity

These are capitalised if they can be used for more than one year, and cost at least £1,000. They are valued at cost. The depreciation rates and methods used are as follows:

Account	Method	Rate
Equipment	Reducing balance	25%

Debtors

Debtors (including trade debtors and loans receivable) are measured on initial recognition at settlement account after any trade discounts or amount advanced by the charity. Subsequently, they are measured at the cash or other consideration expected to be received.

Fund structure

Unrestricted income funds are general funds that are available for use at the trustees' discretion in furtherance of the objectives of the charity.

Restricted income funds are those donated for use in a particular area or for specific purposes, the use of which is restricted to that area or purpose.

Transactions in foreign currency

Transactions in foreign currency are translated into the Charity's functional currency at the spot rate applicable on the day of each transaction. Foreign currency balances in the balance sheet are translated at the rate applicable on the reporting date and exchange differences are included in the statement of financial activities.

Notes to the Financial Statements

Year ended 31st December 2024

		Unrestricted Funds	Restricted Income Funds	2024	2023
2. Analysis of income					
	Donations and legacies				
	Donations and gifts	67,359	145,965	213,324	164,090
	Gift Aid	7,576	17,590	25,166	26,340
	General grants provided by other charities	20,912	134,822	155,734	125,549
	Total donations and legacies	95,847	298,377	394,224	315,979
	Other trading activities				
	Events and merchandise	2,003	-	2,003	2,298
	Total other trading activities	2,003	-	2,003	2,298
	Income from investments				
	Interest income	360	-	360	-
	Total income from investments	360	-	360	-
	Total income	98,210	298,377	396,587	318,277
	Total income in the previous year	109,341	208,936	-	318,277
		Unrestricted Funds	Restricted Income Funds	2024	2023
3. Analysis of expenditure					
	Raising funds				
	Expenditure on raising funds	14,035	-	14,035	23,905
	Total raising funds	14,035	-	14,035	23,905
	Charitable activities				
	Programme costs	54,893	251,474	306,367	247,168
	Support costs	27,758		27,758	22,689
	Total charitable activities	82,651	251,474	334,125	269,857
	Total expenditure	96,686	251,474	348,160	293,762
	Total expenditure in the previous year	99,904	193,858	-	293,762

Notes to the Financial Statements

Year ended 31st December 2024

	Unrestricted funds	Restricted income funds	2024	2023
4. Programme costs				
Agriculture	2,314	12,828	15,142	7,369
Big Give	-	8,048	8,048	
Bush Schools	-	508	508	
CATT training	659	2,521	3,180	3821
Christian discipleship	1,745	23,348	25,093	12714
Clinic equipment and running cost	13,022	7,075	20,097	10566
Clinic medicine	-	4,415	4,415	4,779
Clinic health projects	-	1,598	1,598	3,729
DoL Blackburn	-	31,701	31,701	
Education	-	47,916	47,916	44,997
General office costs	-	22,379	22,379	15,504
Lent project	-	5,219	5,219	7,762
Livelihoods		10,111	10,111	
Management Admin and staff support costs	34,118		34,118	28,490
Salaries	-	73,488	73,488	93,813
Savings groups	-		0	6,664
Travel	3,035		3,035	640
Vehicle maintenance	-	319	319	6,320
Total	54,893	251,474	306,367	247,168
5. Support costs				
Governance	-	-	-	1,859
Office and accountancy support	11,810	-	11,810	11,961
IT software and consumables	3,135	-	3,135	3,462
Office expenses	347	-	347	474
International travel	12,311	-	12,311	3,138
Others	155	-	155	1,795
Total	27,758	-	27,758	22,689

Notes to the Financial Statements

Year ended 31st December 2024

6. Tangible fixed assets

		Equipment		Total	
Cost					
	At 1 January 2024	650		650	
	At 31 December 2024	650		650	
Depreciation					
	At 1 January 2024	563		563	
	Charge for year	22		22	
	At 31 December 2024	585		585	
Net Book Value					
	At 31 December 2024	65		65	
	At 31 December 2023	87		87	
		Unrestricted income funds	Restricted income funds	2024	2023
7. Debtors					
	Prepayments and accrued income	8,198	-	8,198	7,077
8. Creditors					
	Accruals and deferred income	2,675	-	2,675	950
9. Cash at bank and in hand		49,992	138,406	188,398	139,345

Notes to the Financial Statements

Year ended 31st December 2024

11. Charity funds		Balance at	Income	Expenditure	Transfers	Balance at
		1 January 2024				31 December 2024
Unrestricted funds						
	Contingency	18,899	-	-	-	18,899
	General	2,815	79,216	(75,911)	1,194	7,314
Designated funds						
	Vehicle replacement fund	3,685	-	-	-	3,685
	Programme costs	28,064	18,994	(20,775)	(601)	25,682
	Total	53,463	98,210	(96,686)	593	55,580
Restricted funds						
	Agriculture	4,018	8,626	(12,828)	184	-
	Big Give	3,938	25,767	(8,048)	(4,456)	17,201
	Bush schools fund	500	-	(508)	8	-
	CATT training	437	2,450	(2,521)	-	366
	Christian discipleship	11,059	30,500	(23,348)	-	18,211
	Clinic equipment and running costs	4,109	35,348	(7,075)	-	32,382
	Clinic medicine	5,789	-	(4,415)	-	1,374
	Clinic health projects	41	6,690	(1,598)	-	5,133
	DoL Blackburn	1,206	30,487	(31,701)	8	-
	Education	19,378	64,139	(47,916)	-	35,601
	General office costs in Uganda	6,719	21,159	(22,379)	-	5,499
	Lent project	4,991	-	(5,219)	228	-
	Livelihoods		20,699	(10,111)	-	10,588
	Salaries	22,898	52,512	(73,488)	3,435	5,357
	Savings groups	5,724	-	-	-	5,724
	Vehicle maintenance	1,289	-	(319)	-	970
	Total	92,096	298,377	(251,474)	(593)	138,406
Total funds		145,559	396,587	(348,160)	-	193,986

Notes

The Designated Funds represent unrestricted income funds that have been provisionally set aside to provide for replacement vehicles for the operations in Uganda, and certain other salaries and expenses in the coming year in order to ensure continuity of essential coordinating services provided by the implementing partner agency.

The Restricted Income Funds represent grants and other donations that have been specifically raised for certain elements of the development programme in Uganda.

The Education fund includes a sponsorship programme covering fees and other educational expenses for a number of school and university students in the community.

The salaries fund includes grants and sponsorship for key staff and project coordinators in CRESS Africa Foundation Limited.

Notes to the Financial Statements

Year ended 31st December 2024

		Balance at	Income	Expenditure	Transfers	Balance at
		1 January				31 December
		2023				2023
Unrestricted funds						
	Contingency	18,899	-	-	-	18,899
	General	21,115	68,975	(77,412)	(9,863)	2,815
	Designated funds					
	Vehicle replacement fund	2,488	1,197	-	-	3,685
	Programme costs	6,593	39,169	-22,492	4,794	28,064
	Total	49,095	109,341	(99,904)	-	53,463
Restricted funds						
	Agriculture	2,742	7,645	(7,369)	1000	4,018
	Big Give	-	3,938	-	-	3,938
	Bush schools fund	500	-	-	-	500
	CATT training	-	1,000	(563)	-	437
	Christian discipleship	3,005	12,260	(4,206)	-	11,059
	Clinic equipment and running costs	5,394	4,356	(5,641)	-	4,109
	Clinic medicine	404	9,525	(4,140)	-	5,789
	Clinic health projects	3,770	-	(3,729)	-	41
	Blackburn Diocese	-	1,206	-	-	1,206
	Education	13,669	50,706	(44,997)	-	19,378
	General office costs in Uganda	10,206	12,017	(15,504)	-	6,719
	Lent project	-	15,253	(7,762)	(2,500)	4,991
	Salaries	29,317	80,325	(93,813)	7,069	22,898
	Savings groups	1,742	8,636	(4,654)	-	5,724
	Travel	500	-	-	(500)	-
	Vehicle maintenance	700	2,069	(1,480)	-	1,289
	Total	71,949	208,936	(193,858)	-	92,096
Total funds						
		121,044	318,277	(293,762)	-	145,559

12. Transactions with trustees and related parties

During the year six trustees made donations totalling £14,568 (2023: £13,695) towards the normal activities of the charity.

One trustee was reimbursed £4,514 (2023: £4,408) for expenses incurred on behalf of the charity in the implementation of its activities. No other trustees have received any expenses or benefits from the charity during the year.

INDEPENDENT EXAMINER'S

Report to the Trustees of Christian Relief Education Skills and Sustainability CRESS

For the year ended 31 December 2024

I report to the Trustees on my examination of the accounts of the above charity (Christian Relief Education Skills and Sustainability) for the year ended 31 December 2024 which are set out on pages 24 to 33.

Responsibilities and basis of report

As the Charity's Trustees, you are responsible for the preparation of the accounts in accordance with the requirements of the Charities Act 2011 ("the Act").

I report in respect of my examination of the Charity's accounts carried out under section 145 of 2011 Act and in carrying out my examination, I have followed all applicable Directions given by the Charity Commission under section 145(5)(b) of the Act.

Independent examiner's statement

I have completed my examination. I confirm no material matters have come to my attention in connection with the examination which give me cause to believe that in, any material respect:

- the accounting records were not kept in accordance with section 130 of the Charities Act; or
- the accounts did not accord with the accounting records; or
- the accounts did not comply with the applicable requirements concerning the form and content of accounts set out in the Charities (Accounts and Reports) Regulations 2008 other than any requirement that the accounts give a 'true and fair' view which is not a matter considered as part of an independent examination.

I have no concerns and have come across no other matters in connection with the examination to which attention should be drawn in this report in order to enable a proper understanding of the accounts to be reached.

Henry Flint
.....

Henry Flint FCA
Mead House, High Road, Broad Chalke, Salisbury, Wiltshire, SP5 SEH

Date: 14.04.25
.....

STATEMENT

of Trustees' Responsibilities

The Trustees are responsible for preparing the Trustees' report and the financial statements in accordance with the United Kingdom Accounting Standards (United Kingdom Generally Accepted Accounting Practice) and applicable law and regulations. The law applicable to charities requires the Trustees to prepare financial statements for each financial year which give a true and fair view of the state of affairs of the charity and of the incoming resources and application of resources of the charity for that period. In preparing these financial statements, the Trustees are required to:

- select suitable accounting policies and then apply them consistently
- observe the methods and principles in the Charities SORP
- make judgements and estimates that are reasonable and prudent
- state whether applicable accounting standards have been followed, subject to any material departures disclosed and explained in the financial statements
- prepare the financial statements on the going concern basis unless it is inappropriate to presume that the charity will continue in business.

The Trustees are responsible for keeping proper accounting records that disclose with reasonable accuracy at any time the financial position of the charity and enable them to ensure that the financial statements comply with the Charities Act 2011, the applicable Charities (Accounts and Reports) Regulations, and the provisions of the constitution. The Trustees are also responsible for safeguarding the assets of the charity and hence for taking reasonable steps for the prevention and detection of fraud and other irregularities.

Declaration

The Trustees declare that they have approved the Trustees' report above.

Signed on behalf of the charity's Trustees


.....

Date: 14.04.25
.....



CRESS

CHRISTIAN RELIEF
EDUCATION SKILLS AND
SUSTAINABILITY

*CRESS would like to thank all our
supporters and donors for their support in 2024.*

CRESS
registered charity no. 1141343