

ANNUAL REPORT 2022

sowing seeds for life

registered charity no. 1141343

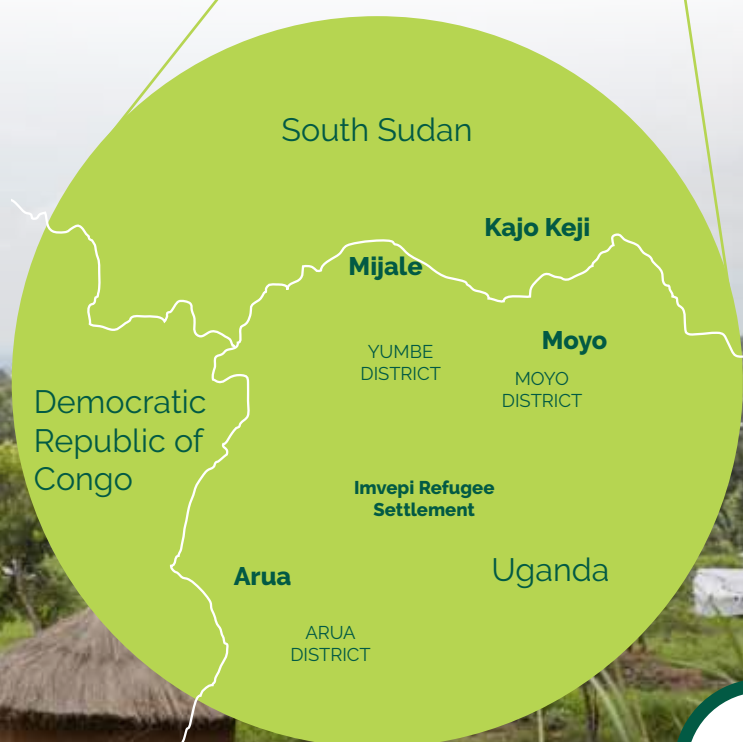


Knighton Manor, Broad Chalke, Salisbury, Wiltshire SP5 5EB
www.cressuk.org e: caroline.lamb@cressuk.org t: 01722 780789

CONTENTS

- 3 Vision, Mission & Values**
- 4 Charitable objectives**
- 5 Our work**
- 6 Message from the CEO**
- 9 Achievements**
- 14 Impact**
- 16 12 years of CRESS**
- 17 Making a difference**
- 18 Finance**
- 19 Strategic objectives**
- 20 Governance**
- 23 Charity details**
- 24 Accounts 2022**
- 34 Independent examiner's report**
- 35 Statement of trustees' responsibilities**

*since 2010 CRESS
has been helping the
South Sudanese
create self-sufficient,
sustainable and ethical
communities*



VISION, MISSION & VALUES

Training and mosquito nets delivered for Eden group



Christian Relief and Education for South Sudanese

VISION

Holistically transformed communities living self-sufficient lives

MISSION

Educate and train South Sudanese people with the knowledge and skills to empower them to establish self-sustaining communities.

CHURCH CENTRED

Working with the local church is not only a good strategy, it's at the very heart of our work. We want to see local churches creating and leading change in their communities.

CORE VALUES

Christian Foundation drives how we operate and our values

Steady organic growth taking feedback and learning on the way

Based on strong personal relationships with South Sudanese and in UK

Unique blend of development and relief

Empower key groups such as students, farmers, women and clergy through education

Most projects have sustainable outcomes with the goal of them becoming self-supporting in time

100% local staff. They know and love their people and will remain with them

Strong financial accountability

CHARITABLE OBJECTIVES

Purpose

The prevention and relief of poverty, suffering, distress and ill health in South Sudan and Northern Uganda by providing grants, items and services to individuals in need and/or charities or other organisations working for the same objects.

For the public benefit to promote the education and health (including social and physical training) of people in South Sudan and Northern Uganda in such ways as the charity Trustees think fit.

Working through the local Christian church to:

- Advance education of children and the further education and vocational training of adults.
- Promote the health and wellbeing of individuals and the community.
- Advance the Christian religion and promote spiritual growth.
- Encourage self-sufficiency through businesses and agricultural development.

Rev. Jacob Karaba in Imvepi Refugee Settlement with his family's harvest

"Before CRESS, life was hard. Everything was horrible.

We eat beans provided by UNHCR every day. We had no money to change our diet. When my wife and I got the training on vegetable growing and received the vegetable seeds from CRESS/DOL, everything changed.

My family eats vegetables throughout the year. We also sell some to raise money for other needs such as clothes, paying medical bills etc. My family no longer buys vegetables from market. I thank CRESS and Diocese of Liwolo for impacting the lives of my family members."

OUR WORK



Strategy 1
Support
community
church leaders

Project 1
Equip, train,
educate and
support clergy in
order to improve
the emotional
wellbeing of their
Diocese



Providing bible study
materials and classes



Loud speakers help
deliver news



Youth bibles and study
materials

Strategy 2
Improve
educational
opportunities &
standards

Project 2
Provide education
sponsorship



Provide support to
enable children to
get quality education
opportunities



Exams success for
candidates



Continued learning for
CRESS/DOL staff

Project 3
Support local
bush schools

Strategy 3
Improve Primary
Health Care

Project 4
Provide a Primary
Health Care Clinic



Providing maternal care



Diagnosis & treatment



Outreach services

Project 5
Trauma Training &
CATT Counselling

Trauma Awareness



Helping young people



Strategy 4
Vocational Skills
Training

Project 6
Improve women's
hygiene



Health & hygiene
training & RUMPS

Project 7
Agricultural
training & support



Providing training



Tools, seeds & advice



Future Projects
Baking, IT, tailoring,
hairdressing,
mechanics,
electricians, builders
etc

Strategy 4
Community
Finance

Project 8
Savings Groups
and provision of
loans to enable
business start-
ups & growth



Providing savings
materials



Training Community
Business Facilitators



Supporting savings
groups



And advising individual
businesses

MESSAGE FROM THE CEO

2022 brought a welcome year without COVID restrictions meaning travel and education returned to normal. Around the world, however, 2022 has brought soaring inflation which has presented it's own challenges as has the dramatic fall in the pound against the dollar.

One of our biggest achievements this year was successful eye screening and surgery in Mijale, a rural trading post close to the Uganda/South Sudan border. CRESS funded eye doctors from Arua hospital to visit twice, to screen 234 patients and then to operate on 70 of them, who had cataracts and trachoma, transforming lives. Many others received glasses. This project was suggested and overseen by the clinic team we fund.

The clinic saw the arrival of a new nurse and clinical officer, as others returned to studying, and the addition of a field midwife. The field midwife divides her time between the Mijale clinic maternity work and the refugee camps. She provides maternal health support and health and hygiene education. Another important arrival to the clinic was a electronic microscope with backlight, donated by Salisbury District Hospital, which I carried out to Nairobi when I met Bishop Joseph there in the autumn. This microscope is the only one in Kerwa Subcounty and allows advanced diagnosis of many diseases.

A number of patients waiting for eye screening in Mijale



Lifting of COVID restrictions also meant other visits from the UK could resume. Olivia Jones our Agriculture Advisor was there to witness the eye screening as she visited for the first time in 2 years to monitor the progress in the Agriculture Groups. Her report, presented at the AGM, found many positive practices, protected fruit trees and enhancing soil, and she has offered practical advice on areas for improvement. In November a Fruit Tree Survival Survey was conducted by the MEL (Monitoring, Evaluation and Learning) team in Arua which saw an overall survival rate for tree seedlings of 45% which Olivia was pleased with.

We were also pleased that Wendy, a Chartered Accountant and CMS mission associate, visited Uganda last spring and worked with the finance teams. She supported them with the accounts software and trained them in good financial management. These improvements have continued throughout the year and I would like to thank the dedication of the teams in Arua and Mijale.

The education sponsorship programme has seen a difficult year. School fees rose sharply when schools opened after the pandemic as many schools had been forced to close so competition for places was high. Increased food and fuel costs also played their part. Some colleges added an extra semester to fill gaps in students knowledge left by online/home study. Most significantly the pound crashing against the dollar meant our money wasn't worth as much as it was before. We are sincerely grateful to all of our education sponsors who have continued to support their students, some increasing their donations, others offering one-off payments for extra semesters with very little notice. Saying all this we are thrilled to have received all of the letters from the students, which have been distributed, and to have just had the exam results back showing excellent results for all of last years candidates. Well done to them all.

Using Zoom for communication has been a blessing over lockdown and through this year, but being able to see Bishop Joseph face-to-face, when he visited us after the Lambeth Conference in August and in Nairobi in the autumn, has revealed to me how human interaction and conversation enables CRESS to best support South Sudanese refugee community.

A message from Samuel Doa - Education & Development Coordinator in Arua.
"I thank God for bringing me to the CRESS family and the Diocese of Liwolo. Amidst the challenging refugee life in Uganda, I could not imagine how my family would have been. The achievements have been enormous. I have been able to construct a small tukul for myself, support my family, and the knowledge my family has gained from the agriculture training has enabled it to become a self-reliant household. Long live CRESS!"

Cashie



"Rev. Canon Charles you are more than a biological father to me. This is the first time for this kind of treatment to reach in our place and I am so lucky to be one of the beneficiaries. Therefore, THANK YOU SO MUCH, this sweet programme put a smile on our lips."

ACHIEVEMENTS 2022

Savings Groups

SAVINGS
GROUPS
ESTABLISHED

70

BY DEC
2022

Savings groups act like a community bank. Refugees put their money in and can then ask for loans for business or the needs of their family. They repay back over time with interest. The groups also are encouraged to be involved in projects together to raise funds which are distributed yearly.

WE
SUPPORT
13

COMMUNITY BASED
FACILITATORS WHO
SUPPORT THE
GROUPS

SAVINGS
GROUPS TRAINED

2094

MEMBERS BY DEC 2022
IMPACTING
APPROX. 16,752*
LIVES

EMMANUEL SAVING GROUP

Emmanuel Group bought 150 plastic chairs to hire to provide more income to the group. These chairs are always hired by the community during events and other community functions. The group has also acquired a grinder to help the community in grinding paste. The machine will help women in the villages grind their sesame and ground nuts. These two projects will generate more income for the group to plan for other projects.

Regina Ita, pictured, is a member of this group. She bought utensils to hire out. 200 cups and 200 plates, so that she can generate extra income for her family.

She also borrowed money for preparing land for agriculture.



INCREASED
INCOME FOR

96.9%

MEANS ABILITY TO
PAY BILLS & PROVIDE
HOUSEHOLD
NECESSITIES

GROUP
MEMBERS TAKING
OUT LOANS

94.3%

TO START INCOME
GENERATING
ACTIVITIES

PAID
BACK LOANS

58%

BY END OF
LOAN DATE

INCREASE
IN INCOME

11%

AS A RESULT OF
INTEREST EARNED
FROM LOANS
TAKEN

*based on 8 per family

THE STORY OF LOISE

"I joined the savings group with the aim of paying my child in school. I could borrow loan from the group and add to my total savings to pay for my child in school and later pay back the loan with interest. Now I am very happy that my child has completed senior six (6).

With access to borrowing money from the group, I am operating my own pan cake business and it's helping me a lot to raise more money for continuous saving."



ACHIEVEMENTS 2022

Agriculture

The aim of our agriculture training is to equip learners with the skills of sustainable organic farming practices that will enable them to improve their families' food security, nutrition and income.

ALMOST

1,000

REFUGEE FARMERS
NOW TRAINED IN
ORGANIC VEGETABLE
PRODUCTION

A TOTAL
POPULATION OF

8,000

LIVES IMPACTED POSITIVELY
THROUGH INCREASED
ACCESS TO
VEGETABLES

TOTAL
VEG VALUE
PRODUCED BY
PROJECT

£145K

IN 2022

SUSTAINABLE
AGRICULTURE
PROMOTED WITH

6

KEY
PRACTICES

33%

OF INCOME FROM VEG
SALES PROVIDING
INCREASED CAPITAL
FOR IGAs*

FAST
GROWING
FUELWOOD
TREES SOURCED
LOCALLY TO
COMBAT CLIMATE
CHANGE

FRUIT
TREE SURVEY
CONDUCTED

2,000

GUARANTEED
ESTABLISHED
BY NOV 2022



Photos: Left, Maize. Right, Yunia, one of our amazing agriculture officers, is inspecting the grinding mill

LIU SALVATION AGRICULTURE & SAVINGS GROUP

Food distribution was again reduced during 2022. The agriculture groups responded positively to this challenge and were able to rent more land for field crop production. The Liu Salvation group planted vegetables and maize cereals. They have managed to purchase a grinding mill through selling their maize production. The machine is currently helping women in the villages grind their grains. This milling project will generate more money to sustain the group's activities.

PAJI KIDO AGRICULTURE GROUP

This group planted vegetables and ground nuts. Their tomatoes seen above were very successful. They have sold the vegetables and harvested 10 sacks of ground nuts.

They want to sell the ground nuts at a better price so they can use the money to put up a sustaining project for the group.

Photo: Yunia, with the full sacks of groundnuts harvested successfully



10

*IGAs income-generating activities

ACHIEVEMENTS 2022

Christian Discipleship

HELPED
FUND YOUTH
CONFERENCE FOR

1,386

REFUGEE YOUTH
FROM CAMPS
& BUSH



DAILY
NEWS &
ADVICE
AS WELL AS
SPIRITUAL
SUPPORT

MAINTAINED
LOUD SPEAKER
SYSTEMS IN REFUGEE
SETTLEMENTS

4

WITH LOCAL
COMMITTEES
OVERSEEING

NEWS
REACHING

7,048

REFUGEES & POOR
UGANDANS



YOUTH
BIBLE STUDY
FOR

788

IN IMVEPI CAMP
& MIJALE
BUSH



DISCIPLESHIP
TRAINING IN
MIJALE FOR

25

NEW LICENCED
LAY READERS



BIBLE STUDY
MATERIALS FOR

589 IN BARI
199 IN ENGLISH

IN 2022

BIBLES
PURCHASED

22 IN BARI

13 ENGLISH

IN 2022

PASTORS
CONFERENCE
FOR

63

REFUGEE
PASTORS

PASTOR'S CONFERENCE

"I used the knowledge right after reaching home, I shared with my family members by looking back to our grandparent's way of living and we identify the sins they committed and accept their wrong and ask God to forgive us on their behalf"

Rev Joseph Kenyi in Imvepi

"This conference, I call it 'Pastors retreat' because it really renews our faith and reminds us of our calling."

Rev Jacob Karaba



ACHIEVEMENTS 2022

Clinic, CATT* & outreach

The clinic we fund is in Mijale in rural Northern Uganda.

FUNDING
PRIMARY HEALTH
CARE CLINIC WHICH
HAS SEEN

7,145

SOUTH SUDANESE
REFUGEES & POOR
UGANDANS

EXPECTANT
MOTHERS SEEN IN
THE CLINIC

1,250

ANTENATAL CLASSES
& CHECKUPS

MIDWIFERY
SERVICES AT CLINIC
DELIVERED

313

BABIES SAFELY IN
2022



ULTRASOUND
SCANS FOR LOCAL
DIAGNOSIS OF

470

PATIENTS SAVING
EACH PATIENT
50MILE ROUND
TRIP

ROBA'S STORY

Roba Milton is a 56 year old from Matu who came for screening and was admitted for surgery.

"Before the operation, my first eye problem started in March 2021, the two eyes were both affected, it hurts so much. The two eyes were not seeing completely. They have to move me with a guiding hand. It was so challenging. I struggled a lot. When I received the news about the eye project for the Diocese of Liwolo, I was so excited and asked my people to take me to Mijale for the screening, which was done. And now, after the first operation of the right eye, I can see again. I did not believe that I would ever see again."

His left eye was also subsequently successfully operated on to restore his sight.

HYGIENE,
FAMILY SPACING
AND MALARIA
PREVENTION FOR

400

REFUGEE MOTHERS
FROM AGRICULTURE &
SAVING GROUPS IN
IMVEPI &
MIJALE

REFUGEES
EYES SCREENED

234

EYES TREATED

121

EYE GLASSES

43

SURGERY FOR CATARACTS &
TRACHOMA

63

CATT & CLINICS WORKING TOGETHER

The CATT* counsellor pictured is Aziku Augustus, he is the in-charge at Kerwa Health Centre III, a government healthcare facility. He has created a room in his facility to treat children and young people who qualify for CATT therapy.

Ms. J is a 14 year old school drop-out and young expectant mother. She lost both parents in the civil war and is carrying the baby of an unknown father after being raped by two men on her way to school.

"Thank you very much Augustus for taking the whole of your time and energy in restoring lost hope in me even when I became a laughing object in my village and school."

She is also thankful to the CRESS funded clinic in Mijale for offering an ultrasound scan to her free of charge.

*CATT Children's Accelerated Trauma Therapy



COMMUNITY
EMOTIONAL HEALTH
PROGRAMME RAISING
AWARENESS FOR

2,345

CHILDREN &
ADULTS

TRAUMA
THERAPY

8

SOUTH SUDANESE PEOPLE
TRAINED
TO WORK WITH
TRAUMATISED
REFUGEE
CHILDREN

CATT*
COUNSELLORS
SUPPORTED

616

CHILDREN IN
2022

12

ACHIEVEMENTS 2022

Education Sponsorship

PRIMARY
& SECONDARY
EDUCATION FOR

58

REFUGEE
STUDENTS

UGANDAN
CERTIFICATES OF
EDUCATION

6

ONE DIVISION 1
FOUR DIVISION 2
ONE DIVISION 3

PRIMARY
LEAVERS EXCEL

7

TWO ACHIEVE
DIVISION 1 &
FIVE DIVISION 2
PASSES

SUPPORTING

10

THROUGH FULL
TIME TERTIARY
EDUCATION

AND
SUPPORTING

4

THROUGH NIGHT
SCHOOL

SCOPAS

"My name is Murye Scopas Edward, a south Sudanese refugee in Northern Uganda. A native of Kajo-Keji. My parents were struggling to raise school fees, sometimes I had to go with a hungry stomach because there is nothing to eat at school. CRESS stepped in and sponsored me right from A' Level through to my college Diploma. It has made me what I am today.



Scopas (centre) working with Morris and Ivan at the clinic in Mijale

I now work for CRESS in Arua as the IT Officer. My desire has always been to see my community move to the next level, from poverty and total suffering to being self-reliant. To equip the young people with skills whenever I can. I am very grateful for the opportunity CRESS gave me to work with the CRESS students, train them with computer skills in Microsoft Office, internet and all associated online applications.

I have now enrolled in night school and will complete my Bachelors Degree.

Because of this support, I intend to stay working for CRESS all the time. I am so grateful."

GONDA COMPLETES HIS UCE

"I have successfully completed my ordinary level of education and am waiting for the results and am sure of getting good results. It is because of your support that I am able to complete my examinations successfully and all I can say is thank you very much, I really appreciate your kind support towards my education.

My aim is to join the advanced level of education next year. I am looking forward to Physics, Economics and Mathematics or Biology, Agriculture and Geography."

Congratulations to Gonda on his division 2 pass and we look forward to hearing how he gets on at A' Level.



13

*UCE Uganda Certificate of Education equivalent to GCSEs

CRESS' 2022 strategy aims to help tackle the underlying causes of poverty and social injustice, as part of global efforts to meet the Sustainable Development Goals (SDGs).

**1 NO
POVERTY**



CRESS' 70 Savings Groups aim to break the cycle of poverty by delivering loans and money skills training to their 2094 members, representing over 10,000 refugees within their households, which in turn provides them with financial security and the ability to afford an education, better nutrition, hygiene and health.

Offering refugee girls and young women RUMPS training means they can save money on costly disposable menstrual pads and they can continue their lives at school and work.



**2 ZERO
HUNGER**



CRESS aims to increase food security through 24 Agriculture Groups by delivering training to new group members, to key community leaders and existing groups focusing on sustainable organic vegetable production and fruit tree planting and establishment.

Planting fruit trees for garden protection and food security has been a big part of our agriculture plan. 2000 of the 4,300 fruit trees planted now guaranteed established. These include mango, pineapple, papaya, orange, avocado and jackfruit. Some fruits are already improving nutrition, especially during hunger seasons of low food availability.

Selling excess fruit and vegetable provides income for all 920 members with which they can purchase further food supplies. This will provide food security for some 7,360 individuals.

**3 GOOD HEALTH
AND WELL-BEING**



In 2022, CRESS' Primary Healthcare Clinic treated 7,145 South Sudanese refugees and poor Ugandan people. Malaria, pneumonia and diarrhoea mostly seen in children below 5 years and pregnant mothers. Peptic ulcers, brucellosis and typhoid including STIs and skin conditions were mostly seen in adults. Cases of malnutrition were seen in the clinic.

The ultrasound equipment provided a diagnosis for 470 patients. The clinic's midwife helped safely deliver 313 babies and saw 1,250 mothers for antenatal clinics.

400 Mosquito nets were distributed and mothers trained in malaria prevention, family spacing, water sanitation and hygiene. Eye doctors from Aura Hospital screened 234 people's eyes and treated them.

Our CATT and Trauma Awareness programmes helped children and adults cope with difficult life situations.

CRESS prefers to talk about our contribution to change, rather than claiming our work alone led to any given change.

*Education Response Plan for Refugees and Host Communities in Uganda (2018-2022) - www.edu-links.org

4 QUALITY EDUCATION



CRESS education sponsorship programme has supported young people in the refugee camps to access education including 10 students in tertiary education. 35 children have been supported to attend primary school and 23 at secondary level.

In 2022 CRESS has also supported four DOL staff members to continue their education through night classes enabling them to fulfil their potential.

5 GENDER EQUALITY



CRESS has supported women via the primary healthcare clinic outreach services. Refugee women have been taught malaria prevention and control, hygiene, sanitation and family planning.

At the clinic 1250 have attended antenatal classes; and women make up the majority of participants in both the Agricultural and Savings Groups, where they have been taught skills to improve their food and financial security and enabling them to increase their levels of empowerment and equality to become a force for change in their communities.

8 DECENT WORK AND ECONOMIC GROWTH



Through the 70 Savings Groups and the 34 Agricultural Groups, CRESS has helped the South Sudanese group members to set up and develop their own businesses and group businesses, grow their own food and generate their own income. Group and individual gardens generate a total vegetables production area of almost 300Ha with a total yearly estimated value of £145K.

Providing instruction through our RUMPS* training programme, local women have created their own RUMPS businesses.



Education in Uganda is once again seeing more males completing education to UCE levels. CRESS has always seen good gender balance in its education sponsorship. Currently, 32 out of 67 of our sponsored students are female. In Uganda only 40%* of enrolled refugee students are female.



11 YEARS OF CRESS

2010

2011

- > 1st Chalke Valley trip & Clergy conference
- > 11 Clergy treated for River blindness
- > 20 children sponsored
- > Small 2 roomed clinic opens in Liwolo

2014

- > Chalke Valley Lent Project raises £20,000 for building 8 roomed clinic in Liwolo

2016

- > 35 women in three groups in Kajo Keji form the first agricultural project
- > Solar fridge arrives at the clinic all the way from Wales
- > People start to flee to Uganda

2018

- > Clinic accredited with Ugandan Health Authority
- > Agriculture training re-starts

2020

- > Supported refugees through COVID lockdown with food, PPE, home-schooling and Loud Speaker Project
- > Used Zoom for meetings with Arua and UK events

2022

- > All in this report...

2013

- > 85 water filters given out to clergy and MU members
- > First agricultural training in Uganda
- > Women's conference attended by 200 women in Kajo Keji led by 6 women from UK

2015

- > New clinic opened by CRESS team
- > Fred Taban comes to the UK to study at All Nations College

2017

- > War means many from Kajo Keji flee to Uganda
- > CRESS moves to Uganda - office opens Arua
- > May. Joseph Aba becomes Bishop of the newly created Diocese of Liwolo - CRESS starts working with the Diocese of Liwolo as their partner organisation
- > Clinic opens in September in Mijale

2019

- > 41 savings groups started with 1,041 members
- > Clinic undertook hygiene and RUMPS training, and co-ordinated CATT Counsellors as well as seeing 7862 patients
- > Bishop Joseph leads a student conference

2021

- > Savings groups now have 1,570 members.
- > 76 pastors included within our agriculture training in addition to 320 group members.



Eric Nelson

Isaac Kwaje

Bishop Joseph Aba

Samuel Doa

Murye Scopas

Gale Scopas

Rina Kojo

Mawa Fred

Isaac Soro

Joel Abate

Yango Yunja

Alex Kenyi

Moses Marle

Irene Abiko

Julious Abate

16

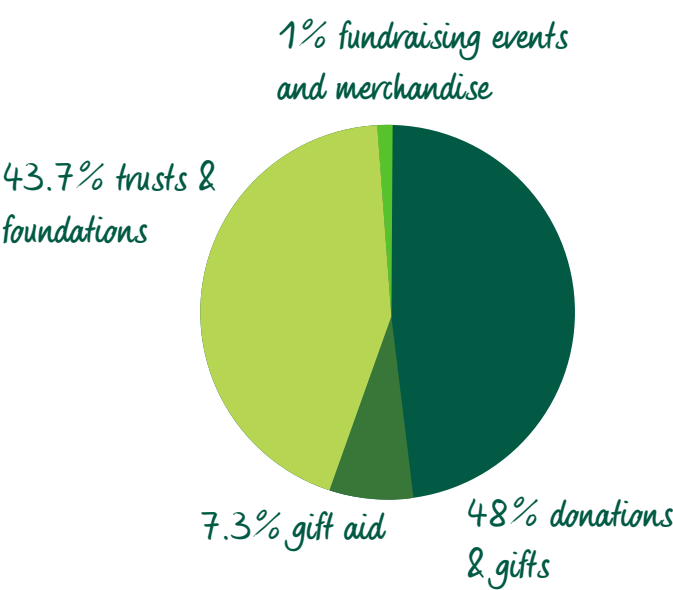
MAKING A DIFFERENCE

COMMUNITY SUPPORT

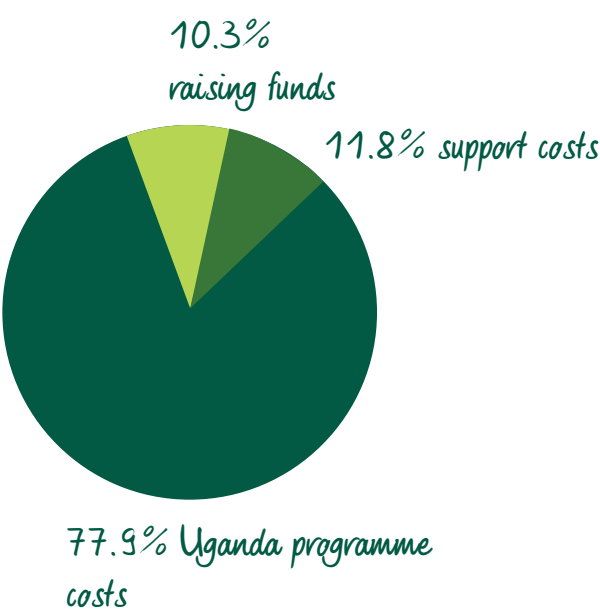


FINANCE

Income
Total: £314,389



Expenditure
Total: £292,855



Finance highlights of CRESS' 2022 Accounts



Collecting water in Imvepi Refugee Settlement

STRATEGIC OBJECTIVES

The table below sets out our plans for the coming year:

Strategic Objective	Plans 2023
Begin process of community ownership without UK support where feasible	<ul style="list-style-type: none"> • Continue to improve governance in UK & Uganda • Continue poultry & gardens project to support office & clinic
Equip refugees to be income secure	<ul style="list-style-type: none"> • Agriculture Groups develop sustainability • Savings Groups continue with support and training. Give more savings groups agriculture training. • RUMPS training continued
Improve and develop training to boost livelihood opportunities for young	<ul style="list-style-type: none"> • Sponsored education, academic and vocational, both to be valued • RUMPS training
Build capacity and capabilities of organisation to deliver strategy	<ul style="list-style-type: none"> • Improve current monitoring and supervisory processes • Develop and train CRESS staff & volunteers • Further develop strategies, policies and budgets
Diversify income generation and boost fundraising	<ul style="list-style-type: none"> • Increase Regular Donors, Legacies, Major Donors, Corporates, Trust Funds • Increase fundraising events • Recruit Ambassadors and volunteer fund-raisers
Improve health in the community and sustainability of clinic	<ul style="list-style-type: none"> • Primary Healthcare Clinic, increase sustainability • Improve clinic facilities • Further support CATT counselling

GOVERNANCE

Governance

CRESS is an unincorporated organisation. Its governing document is a trust deed dated 12th of April 2011, as amended by resolutions dated 23rd of January 2013 and 11th of November 2019.

CRESS recruits Trustees in the UK with the skills and experience to ensure the charity carries out its activities effectively and efficiently. New Trustees are appointed by existing Trustees.

The Trustees take an active interest in operational activities and remain informed through regular reports and three full Board meetings a year.

2022 Trustees

Chair of Trustees

Jeremy Metcalfe

Trustees

Caroline Lamb

John Kenneth Elliott Broadley

Dr Jonathan Oliver Cullis

Jane Guy

Olivia Jane Jones

Specialist Volunteer Advisers

Emotional Health Advisor

Fiona Sheldon

Education and Sponsorship

Becky Sedgwick

Agricultural Adviser

Olivia Jane Jones

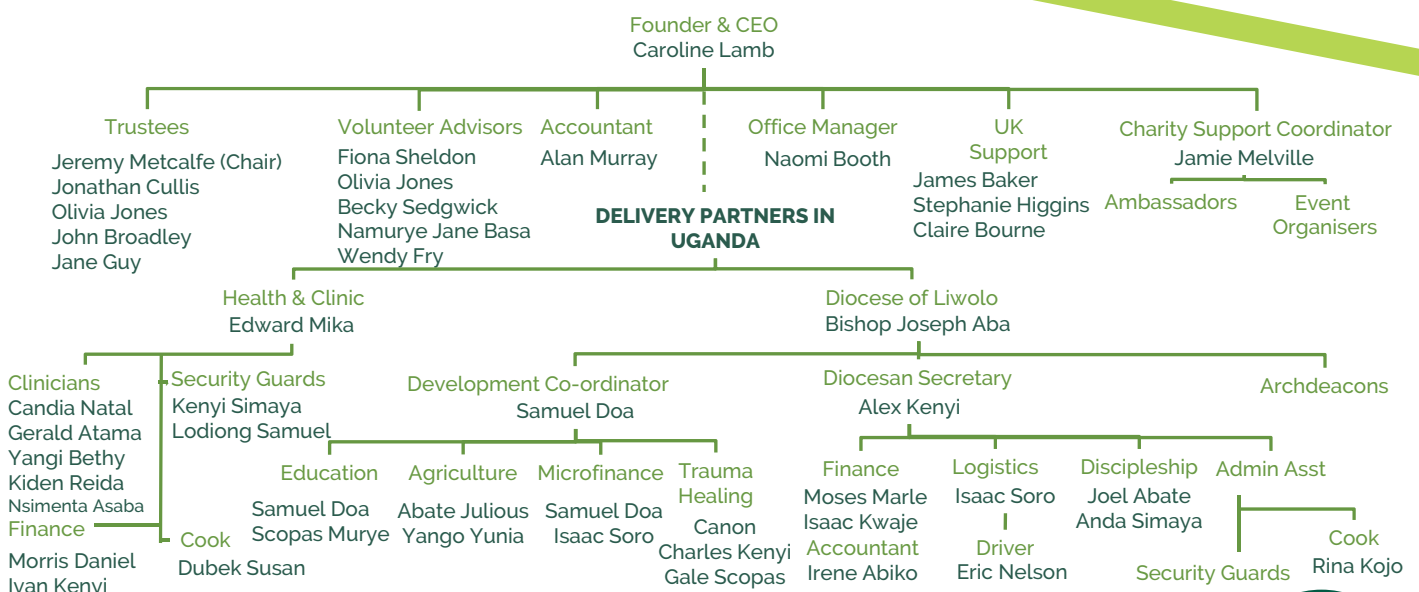
South Sudan Adviser

Namurye Jane Basa

Volunteer Coordinator & Strategy Assistant

Jamie Melville

ORGANISATION STRUCTURE





Asaba, the Field Midwife presenting at a health & hygiene training

Public Benefit

The Trustees confirm that they have complied with the requirements of section 4 of the Charities Act 2011 to have due regard to the public benefit guidance published by the Charity Commission for England and Wales. This Annual Report provides a summary of our main activities undertaken in 2022 demonstrating our charitable purpose for the public benefit.

Risk Management

The Trustees have a risk register, important risks are discussed at each trustee meeting. The register is reviewed annually.

Safeguarding

The Trustees believe that the welfare of children and vulnerable individuals is paramount. The charity operates within the framework of its safeguarding policy, which clearly states how incidents and allegations will be handled should they arise.

The Agriculture Team and Olivia Jones visit Abizardi Research Farm





Financial Overview

CRESS' financial position is shown in the attached accounts. Donations from regular supporters continued to be strong during the year and a number of one-off gifts from individuals and charitable trusts resulted in an overall increase in donation income. A significant investment was made this year in fundraising from grant making trusts, following the previous year's unusually low income in the post-Covid period, resulting in a record overall income of £314,389 (2021: £223,155). Expenditure on the Uganda programme showed a small increase over the previous year at £228,037 (2021: £219,035) but otherwise the main changes in costs were on fundraising services and management support to relieve some of the burden on the Chief Executive/Trustee.

The increase in UK costs resulted in a small deficit (£5,813) on unrestricted

funds with reserves carried forward of £49,095 providing a secure start to the new year. Restricted reserves grew by £27,347 to £71,949 which will ensure continuity of the Uganda programme well into 2023.

Reserves

CRESS understands that our supporters want our resources to be used in the most efficient and effective manner achieving maximum impact for our beneficiaries. The Trustees aim to maintain unrestricted bank balances at a level which will provide sufficient funds to ensure that charitable activities, support and governance costs are covered for 3 months. The Trustees believe that the scale of our current operations requires no change to the reserves policy. However, they will continue to review the situation as the charity develops.

Selling produce in Imvepi Refugee Settlement



CHARITY DETAILS

Charity

CRESS

Christian Relief and Education for South Sudanese

Registered Charity Number

1141343

Principal Address

Knighton Manor Farm, Knighton Road, Broad Chalke, Salisbury, Wiltshire, SP5 5EB

Bankers

HSBC Bank Plc Blandford Forum

17 Market Place, Blandford Forum, Dorset, DT11 7AG

Independent Examiner

H Flint FCA

Mead House, High Road, Broad Chalke, Salisbury, Wiltshire, SP5 5EH

Accountant

Alan Murray

72 Churchfield Road, Poole, Dorset BH15 2QP

ANNUAL ACCOUNTS

CRESS

For the year ended 31 December 2022

Registered charity number: 1141343

CONTENTS

25-33	Statements of Financial Activities
34	Independent Examiners report to the Trustees
35	Statement of Trustee responsibilities

STATEMENT

of Financial Activities

Year ended 31st December 2022

		Unrestricted Funds	Restricted Income Funds	2022	2021
Incoming resources (Note 2)					
	Income and endowments				
	Donations and legacies	123,068	188,273	311,341	218,358
	Other trading activities	3,028	-	3,028	4,796
	Investments	20	-	20	1
	Total income and endowments	126,116	188,273	314,389	223,155
Resources expended (Note 3)					
	Expenditure				
	Raising funds	30,325	-	30,325	8,330
	Charitable activities	92,035	170,495	262,530	231,579
	Total expenditure	122,360	170,495	292,855	239,909
Net income (expenditure) before transfers		3,756	17,778	21,534	(16,754)
Transfer of funds					
	Transfer between funds	(9,569)	9,569	-	-
Net movement in funds		(5,813)	27,347	21,534	(16,754)
Reconciliation of funds					
	Total funds brought forward	54,908	44,602	99,510	116,264
	Total funds carried forward	49,095	71,949	121,044	99,510

BALANCE SHEET

CRESS

As at 31 December 2022

		2022	2021
Fixed assets			
	Tangible assets (Note 6)	116	154
Current assets			
	Debtors (Note 7)	6,893	5,338
	Cash at bank and in hand (Note 9)	115,460	96,016
		122,353	101,354
Creditors: amounts falling due within one year			
	Creditors (Note 8)	1,425	1,998
Net current assets		120,908	99,356
Total assets less current liabilities		121,044	99,510
Funds of the charity (Note 11)			
	Restricted funds	71,949	44,601
	Unrestricted funds	49,095	54,909
	Total funds	121,044	99,510

Approval

Signed on behalf of all the trustees

.....


Jeremy Metcalfe
Chair of Trustees

Date

07.03.23
.....

NOTES

to the Financial Statements As at 31 December 2022

1. Accounting Policies

Basis of accounting

These accounts have been prepared under the historical cost convention with items recognised at cost or transaction value unless otherwise stated in the relevant notes to these accounts.

The accounts have been prepared in accordance with:

- the Statement of Recommended Practice: Accounting and Reporting by Charities preparing their accounts in accordance with the Financial Reporting Standard applicable in the UK and Republic of Ireland (FRS 102) issued on 16 July 2014;
- the Financial Reporting Standard applicable in the United Kingdom and Republic of Ireland (FRS102); and with
- the Charities Act 2011.

The charity constitutes a public benefit entity as defined by FRS 102.

Going concern

The Trustees consider that there are no material uncertainties about the charity's ability to continue as a going concern.

Income

Recognition of income

These are included in the Statement of Financial Activities (SoFA) when:

- the charity becomes entitled to the resources;
- it is more likely than not that the trustees will receive the resources; and
- the monetary value can be measured with sufficient reliability.

Offsetting

There has been no offsetting of assets and liabilities, or income and expenses, unless required or permitted by the FRS 102 SORP or FRS 102.

Grants and Donations

Grants and donations are only included in the SoFA when the general income recognition criteria are met.

The charity is not registered for VAT.

Tax reclaims on donations and gifts

Gift Aid receivable is included in income when there is a valid declaration from the donor. Any Gift Aid amount recovered on a donation is considered to be part of that gift and is treated as an addition to the same fund as the initial donation unless the donor or the terms of the appeal have specified otherwise.

Donated goods

Donated goods are measured at fair value (the amount for which the asset could be exchanged) unless impractical to do so.

Support Costs

The charity has incurred expenditure on support costs.

Notes to the Financial Statements

Year ended 31st December 2022

Income from interest, royalties and dividends

This is included in the accounts when receipt is probable and the amount receivable can be measured reliably.

Expenditure and liabilities

Liability recognition

Liabilities are recognised where it is more than likely than not that there is a legal or constructive obligation committing the charity to pay out resources and the amount of the obligation can be measured with reasonable certainty.

Governance and support costs

Support costs have been allocated between governance costs and other support. Governance costs comprise all costs involving public accountability of the charity and its compliance with regulation and good practice. Support costs include central functions.

Creditors

The charity has creditors which are measured at settlement amount less any trade discounts.

Assets

Tangible fixed assets for use by the charity

These are capitalised if they can be used for more than one year, and cost at least £1,000. They are valued at cost. The depreciation rates and methods used are as follows:

Account	Method	Rate
Equipment	Reducing balance	25%

Debtors

Debtors (including trade debtors and loans receivable) are measured on initial recognition at settlement account after any trade discounts or amount advanced by the charity. Subsequently, they are measured at the cash or other consideration expected to be received.

Fund structure

Unrestricted income funds are general funds that are available for use at the trustees' discretion in furtherance of the objectives of the charity.

Restricted income funds are those donated for use in a particular area or for specific purposes, the use of which is restricted to that area or purpose.

Notes to the Financial Statements

Year ended 31st December 2022

		Unrestricted Funds	Restricted Income Funds	2022	2021
2. Analysis of income					
	Donations and legacies				
	Donations and gifts	71,693	79,150	150,843	144,691
	Gift Aid	8,645	14,376	23,021	24,331
	General grants provided by other charities	42,730	94,747	137,477	49,336
	Total donations and legacies	123,068	188,273	311,341	218,358
	Other trading activities				
	Events and merchandise	3,028	-	3,028	4,796
	Total other trading activities	3,028	-	3,028	4,796
	Income from investments				
	Interest income	20	-	20	1
	Total income from investments	20	-	20	1
	Total income	126,116	188,273	314,389	223,155
	Total income in the previous year	93,652	129,503	-	223,155
		Unrestricted Funds	Restricted Income Funds	2022	2021
3. Analysis of expenditure					
	Raising funds				
	Expenditure on raising funds	30,325	-	30,325	8,330
	Investment management costs				
	Total raising funds	30,325	-	30,325	8,330
	Charitable activities				
	Programme costs	57,542	170,495	228,037	219,035
	Support costs	34,493	-	34,493	12,544
	Total charitable activities	92,035	170,495	262,530	231,579
	Total expenditure	122,360	170,495	292,855	239,909
	Total expenditure in the previous year	92,288	147,621	-	239,909

Notes to the Financial Statements

Year ended 31st December 2022

	Unrestricted funds	Restricted income funds	2022	2021
4. Programme costs				
Agriculture	727	6,114	6,841	9,659
Bush schools	-	-	-	2,041
CATT training	5,929	3,081	9,010	4,037
Christian discipleship	743	6,821	7,564	3,850
Clinic equipment and running cost	8,630	1,996	10,626	7,798
Clinic medicine	-	8,129	8,129	8,631
Clinic health projects	-	7,175	7,175	-
Covid 19 response	-	-	-	546
Education	-	49,284	49,284	43,956
General office costs	-	4,754	4,754	7,077
Land	-	-	-	7,841
Management, admin & staff support costs	29,009	-	29,009	22,332
RUMPS	-	1,940	1,940	149
Salaries	1,044	73,880	74,924	60,393
Savings groups	4,075	4,673	8,748	4,796
Support medicine	773	1,590	2,363	1,643
Travel	-	1,058	1,058	-
Vehicle purchases	1,472	-	1,472	34,286
Vehicle maintenance	5,140	-	5,140	-
Total	57,542	170,495	228,037	219,035
5. Support costs				
Governance	144	-	144	218
Office and accountancy support	28,444	-	28,444	8,448
IT software and consumables	2,704	-	2,704	1,592
Printing postage and stationery	373	-	373	1,062
International travel	2,237	-	2,237	-
Others	591	-	591	1,224
Total	34,493	-	34,493	12,544

Notes to the Financial Statements

Year ended 31st December 2022

6. Tangible fixed assets

		Equipment		Total	
Cost					
	At 1 January 2022	650		650	
	At 31 December 2022	650		650	
Depreciation					
	At 1 January 2022	496		496	
	Charge for year	38		38	
	At 31 December 2022	534		534	
Net Book Value					
	At 31 December 2022	116		116	
	At 31 December 2021	154		154	
		Unrestricted income funds	Restricted income funds	2022	2021
7. Debtors					
	Prepayments and accrued income	6,893	-	6,893	5,338
8. Creditors					
	Accruals and deferred income	1,425	-	1,425	1,998
9. Cash at bank and in hand		43,511	71,949	115,460	96,016

Notes to the Financial Statements

Year ended 31st December 2022

11. Charity funds		Balance at	Income	Expenditure	Transfers	Balance at
		1 January 2022				31 December 2022
Unrestricted funds						
	Contingency	18,899	-	-	-	18,899
	General	18,157	126,116	(122,360)	(798)	21,115
Designated funds						
	Vehicle replacement fund	1,690	-	-	798	2,488
	Programme costs	16,163	-	-	(9,569)	6,594
	Total	54,909	126,116	(122,360)	(9,569)	49,096
Restricted funds						
	Agriculture	4,776	4,080	(6,114)	-	2,742
	Bush schools fund	500	-	-	-	500
	CATT training	15	2,925	(3,081)	141	-
	Christian discipleship	-	9,826	(6,821)	-	3,005
	Clinic equipment and running costs	2,100	5,290	(1,996)	-	5,394
	Clinic medicine	5,673	2,860	(8,129)	-	404
	Clinic health projects	-	10,780	(7,175)	165	3,770
	Education	13,726	49,227	(49,284)	-	13,669
	General office costs in Uganda	2,839	12,121	(4,754)	-	10,206
	RUMPS - womens' health	1,531	-	(1,940)	409	-
	Salaries	13,195	83,549	(73,880)	6,452	29,316
	Savings groups	-	6,415	(4,673)	-	1,742
	Support medicine for staff	-	-	(1,590)	1,590	-
	Travel	246	500	(1,058)	812	500
	Vehicle maintenance	-	700	-	-	700
	Total	44,601	188,273	(170,495)	9,569	71,948
Total funds		99,510	314,389	(292,855)	-	121,044

Notes

The Designated Funds represent unrestricted income funds that have been provisionally set aside to provide for replacement vehicles for the operations in Uganda, and certain other salaries and expenses in the coming year in order to ensure continuity of essential coordinating services provided by the implementing partner agency.

The Restricted Income Funds represent grants and other donations that have been specifically raised for certain elements of the development programme in Uganda.

The Education fund includes a sponsorship programme covering fees and other educational expenses for a number of school and university students in the community.

The salaries fund includes grants and sponsorship for key staff and project coordinators in the Diocese of Liwolo.

Notes to the Financial Statements

Year ended 31st December 2022

	Balance at 1 January 2021	Income	Expenditure	Transfers	Balance at 31 December 2021
Unrestricted funds					
Contingency	18,899				18,899
General	8,105	93,652	(92,288)	8,688	18,157
Designated funds					
Vehicle replacement fund	20,010			(18,320)	1,690
Programme costs	6,531			9,632	16,163
Total	53,545	93,652	(92,288)	-	54,909
Restricted funds					
Agriculture	7,847	6,588	(9,659)		4,776
Bush schools fund	41	2,500	(2,041)		500
CATT training	48	3,600	(3,633)		15
Christian discipleship	-	3,500	(3,500)		-
Clinic equipment and running costs	9,699	4,125	(7,798)		6,026
Clinic medicine	3,378	7,000	(8,631)		1,747
Covid 19 response	-	500	(500)		-
Education	16,854	40,828	(43,956)		13,726
General office costs in Uganda	3,417	6,499	(7,077)		2,839
Land for clinic buildings	7,841	-	(7,841)		-
Loud hailer project	-	-	-		-
RUMPS - womens' health	1,680		(149)		1,531
Salaries	10,899	54,363	(52,067)		13,195
Savings groups	-	-	-		-
Support medicine for staff	769	-	(769)		-
Travel	246	-	-		246
Vehicle maintenance	-	-	-		-
Total	62,719	129,503	(147,621)	-	44,601
Total funds	116,264	223,155	(239,909)	-	99,510

12. Transactions with trustees and related parties

During the year six trustees made donations totalling £21,184 (2021: £9,970) towards the normal activities of the charity.

One trustee was reimbursed £1,377 (2021: £982) for expenses incurred on behalf of the charity. No other trustees have received any expenses or benefits from the charity during the year.

INDEPENDENT EXAMINER'S

Report to the Trustees of Christian Relief and Education for South Sudan CRESS

For the year ended 31 December 2022

I report to the Trustees on my examination of the accounts of the above charity (Christian Relief and Education for South Sudanese) for the year ended 31 December 2022 which are set out on pages 24 to 33,

Responsibilities and basis of report

As the Charity's Trustees, you are responsible for the preparation of the accounts in accordance with the requirements of the Charities Act 2011 ("the Act").

I report in respect of my examination of the Charity's accounts carried out under section 145 of 2011 Act and in carrying out my examination, I have followed all applicable Directions given by the Charity Commission under section 145(5)(b) of the Act.

Independent examiner's statement

I have completed my examination. I confirm no material matters have come to my attention in connection with the examination which give me cause to believe that in, any material respect:

- the accounting records were not kept in accordance with section 130 of the Charities Act; or
- the accounts did not accord with the accounting records; or
- the accounts did not comply with the applicable requirements concerning the form and content of accounts set out in the Charities (Accounts and Reports) Regulations 2008 other than any requirement that the accounts give a 'true and fair' view which is not a matter considered as part of an independent examination.

I have no concerns and have come across no other matters in connection with the examination to which attention should be drawn in this report in order to enable a proper understanding of the accounts to be reached.

.....
Henry Flint

Henry Flint FCA

Mead House, High Road, Broad Chalke, Salisbury, Wiltshire, SP5 2EH

Date: 03.03.23

STATEMENT

of Trustees' Responsibilities

The Trustees are responsible for preparing the Trustees' report and the financial statements in accordance with the United Kingdom Accounting Standards (United Kingdom Generally Accepted Accounting Practice) and applicable law and regulations. The law applicable to charities requires the Trustees to prepare financial statements for each financial year which give a true and fair view of the state of affairs of the charity and of the incoming resources and application of resources of the charity for that period. In preparing these financial statements, the Trustees are required to:

- select suitable accounting policies and then apply them consistently
- observe the methods and principles in the Charities SORP
- make judgements and estimates that are reasonable and prudent
- state whether applicable accounting standards have been followed, subject to any material departures disclosed and explained in the financial statements
- prepare the financial statements on the going concern basis unless it is inappropriate to presume that the charity will continue in business.

The Trustees are responsible for keeping proper accounting records that disclose with reasonable accuracy at any time the financial position of the charity and enable them to ensure that the financial statements comply with the Charities Act 2011, the applicable Charities (Accounts and Reports) Regulations, and the provisions of the constitution. The Trustees are also responsible for safeguarding the assets of the charity and hence for taking reasonable steps for the prevention and detection of fraud and other irregularities.

Declaration

The Trustees declare that they have approved the Trustees' report above.

Signed on behalf of the charity's Trustees



.....

Olivia Jones
Secretary

Date: 07.03.23
.....

CRESS

CHRISTIAN RELIEF AND EDUCATION FOR SOUTH SUDANESE



*CRESS would like to thank all our
supporters and donors.*

"CRESS' outstanding achievements in 2022 go beyond our set goals and objectives have impacted the lives of our people enabling them to move from dependence on hand outs to self-reliance.

Savings groups are now investing in income generating activities and many refugees are even setting up their own savings groups if they cannot join CRESS schemes.

*This is a complete paradigm shift,
our greatest success."*

Bishop Joseph Aba

