



ST. MATTHEW'S PROJECT

20th Anniversary 2004-2024

**Company Limited by Guarantee
Charity Registration Number: 1140964
Company Registration Number: 7007350**

Annual Report and Financial Statements

For the period ended 31 December 2024

ST. MATTHEW'S PROJECT

Annual Report and Financial Statements For the period ended 31 December 2024 Contents



	Page
Legal & administrative information	2
Annual Report of the Trustees	4
Independent Examiner's report to the Trustees	42
Statement of financial activities	43
Balance sheet	44
Notes to the financial statements	45



ST. MATTHEW'S PROJECT

Annual Report of the Trustees For the period ended 31 December 2024

Charity Name	St. Matthew's Project.						
Charity Registration no	1140964. The Charity was registered with the Charity Commission on 22 March 2011.						
Company Registration no	7007350.						
Registered Office	90 Gaskarth Road, London SW12 9NW						
Governing Document	The organisation is a charitable company limited by guarantee, incorporated on 2 September 2009. The company was established under a Memorandum of Association which established the objects and powers of the charitable company and is governed under its Articles of Association.						
Mission Statement	To provide a safe and encouraging environment where young people can come together and enjoy structured sports and learning opportunities. To help the young people of Lambeth fulfil their potential and improve their well-being both physically and emotionally through targeted support to children and families						
Objectives	<ol style="list-style-type: none">1. To act as a resource for young people up to the age of 30 living in the south Brixton area by providing advice and assistance and organising programmes of physical, educational and other activities as a means of:<ul style="list-style-type: none">● advancing in life and helping young people by developing their skills, capacities and capabilities to enable them to participate in society as independent, mature and responsible individuals.● advancing education● relieving unemployment● providing recreational and leisure time activity in the interests of social welfare for people living in the south Brixton area who have need by reason for their youth, age, infirmity or disability, poverty or social and economic circumstances, with a view to improving the conditions of life of such persons.2. The promotion of community participation in healthy recreation, in particular children and young people aged between 6 and 25 by the provision of facilities for playing football.						
Trustees	<p>The Trustees who served during the year and who were serving at the date of this report were:</p> <table><tr><td>David Keen</td><td>Treasurer</td></tr><tr><td>Jenny Greenfield</td><td>Chair</td></tr><tr><td>Lekan Ojumu</td><td></td></tr></table>	David Keen	Treasurer	Jenny Greenfield	Chair	Lekan Ojumu	
David Keen	Treasurer						
Jenny Greenfield	Chair						
Lekan Ojumu							



ST. MATTHEW'S PROJECT

Annual Report of the Trustees For the period ended 31 December 2024

	James Alexander Daisy Streatfield	(resigned 28 January 2025)
Management Team	Lee Dema Fiona McGee Dwight Barnett Jonny Hough	Project Director M&E Officer Project Coordinator Office & Operations Manager
Key Management Personnel	The person in charge of directing, controlling, running and operating the Charity on a day-to-day basis is Lee Dema, the Project Director.	
Bankers	Santander UK 301 St Vincent Street Glasgow G2 5NT	
Independent Examiner	Sheila Parry ACCA SPX Oxford Limited Peace House 19 Paradise Street Oxford OX1 1LD	



ST. MATTHEW'S PROJECT

Annual Report of the Trustees For the period ended 31 December 2024

The Trustees submit their report and the financial statements of St. Matthew's Project ("the Charity") for the 16 month period ended 31 December 2024. The financial statements have been prepared in the format prescribed by the Statement of Recommended Practice: Accounting and Reporting by Charities (SORP 2015 (FRS102)). The financial statements have been prepared on a natural or alternative basis of analysis as per SORP 4.6. The legal and administrative information set out earlier in this document forms part of this report. This report also constitutes a directors' report required by section 415 of the Companies Act 2006 as all Trustees of a charity company are directors.

Mission Statement

To provide a safe and encouraging environment where young people can come together and enjoy structured sports and learning opportunities. To help the young people of Lambeth fulfil their potential and improve their well-being both physically and emotionally through targeted support to children and families.

Public benefit

The Trustees have complied with their duty under Section 4 of the Charities Act 2011 to have due regard to public benefit guidance published by the Charity Commission.

Who We Are

The St. Matthew's Project provides a safe and encouraging environment where 3-30-year-olds can come together and enjoy structured football sessions and other activities. We help children and young people living mainly in the Tulse Hill and Coldharbour wards of Lambeth fulfil their potential and have a real impact on their community. What began as a kick-about in Brockwell Park is now a thriving youth project, which offers a growing array of programmes and services to over 350 young people each week, bringing them together from 3 different housing estates, which historically would not have anything to do with each other, and the surrounding streets. The project has a dedicated team of 2 full-time staff, 4 part-time, 20 sessional coaches and 7 volunteers, with extensive experience of working with a challenging target group and a thorough understanding of the local community and its needs.

Our current activities include weekly turn-up-and-play sessions for both sexes; a Family Football and Literacy Programme; estate-based sports sessions; and a Fit for Life programme combining free food with mental wellbeing sessions and drop-ins. For those aged 16+, we offer free F.A coaching courses, construction work training opportunities and a volunteering programme. Through continued engagement we help young people develop their personal skills and strengths and tackle any weaknesses they feel they might have. In this way, we aim to meet the needs of local young people, raise their aspirations and help them steer clear of a life of crime and gang-related activity. Since we work with young people right up until they are in their late-twenties, we are also well-placed to offer those progressing through our programmes an established exit route into further structured and age-appropriate sporting and employment opportunities.

Where We Work And What We Do

The majority of our participants live in the Brixton Rush Common and Brixton Windrush wards of Lambeth which are within the top 10% Deprivation Deciles nationally for crime and living environment. 94% of our participants are from a BAME background. 65% are entitled to free school meals. As well as complex deprivation issues, the young people we work with also face health-related difficulties, including obesity, and a high prevalence of risk factors for mental health problems. Crime levels, and in particular gang-related activity, are high in our target area. We know that, first the pandemic and now, the ongoing cost of living crisis continue to heap pressure on many families in our area who were already struggling to cope,



ST. MATTHEW'S PROJECT

Annual Report of the Trustees For the period ended 31 December 2024

which in turn has an impact on the young people in these households. Lambeth has the highest volume of serious youth violence in the capital with over 7,000 crimes in 10 years. It also has the greatest number of ambulance callouts. Lambeth is among the top 10 most dangerous boroughs in London. The overall crime rate in Lambeth in 2023 was 103 crimes per 1,000 people. This compares poorly to London's overall crime rate, coming in 8% higher than the London rate of 95 per 1,000 residents.

Nine young men known to us have lost their lives due to gang-related incidents since 2011 and tensions continue to remain high in the local area, with gangs holding a strong influence over young people and their families. A combination of enforced membership and low aspirations has meant that gangs have traditionally offered a viable, albeit illicit, career path for many of the boys and young men in the local community. Some parents even turn a blind eye to young people's involvement in gangs and criminal activity as the opportunity for them to make some money can be a welcome relief to families living in persistent poverty.

It is part of our ethos to offer those we work with more than just the chance to participate in a football project. We support young people to make the transition from sports participation to accessing further sporting, educational or employment opportunities as they get older. Through continued engagement we help young people develop their personal skills and strengths and tackle any weaknesses they feel they might have. In this way, we aim to meet the needs of local young people, raise their aspirations and help them steer clear of a life of crime and gang-related activity. Due to the fact that we work with young people right up until they are in their late-twenties, we are also well-placed to offer those progressing through our programmes an established exit route into further structured and age-appropriate sporting and employment opportunities.

The importance of being firmly rooted in the local community and taking the time to develop the project incrementally has been fundamental to our success over the past 2 decades. It has also allowed us to respond appropriately to the evolving needs of our users. Due to the relationship we have built up with local young people over a long period of time, we have earned a legitimacy to advise and help them in a way other organisations cannot. Consequently, more and more young people are benefiting from the services we offer, enhancing their life opportunities.

Our Funders

Funders	Partners	SMFC Kit Sponsors
ANT-Fonden Berkeley Foundation Big Lottery Fund Garfield Weston High Trees Community Trust Lambeth Council London Youth Mayor's Office Peter Minet Trust RouPELL Park RMO Safer London Sport England Thrale Almhouses UK Youth	Active Lambeth Brixton Police Brockwell Park Community Partners Brockwell Park Management City Heights Academy Crystal Palace F.C Academy Effra Digital Football Foundation Fulham F.C Foundation High Trees Community Trust Jubilee Primary School Lambeth Early Action Partnership Lambeth Safeguarding Children P'ship Lambeth Sports & Recreation Services London F.A	Cottman Foundation KMCO Group McEvoy Maintenance

ST. MATTHEW'S PROJECT

Annual Report of the Trustees For the period ended 31 December 2024



Walcot Foundation	London Youth Partisan CIC Roupell Park RMO South Central Youth Sported St. Matthew's Estate TRA Streetgames Substance Social Research Tooting & Mitcham United F.C Tulse Hill Estate TRA Tulse Hill Safer Neighbourhood Team	
-------------------	--	--



AIMS & OBJECTIVES



To act as a resource for young people up to the age of 25 living in the Tulse Hill and Brixton area by providing advice and assistance and organising a programme of physical, educational and other activities.



To promote community participation in healthy recreation, in particular children and young people aged between 3 and 25 by the provision of facilities for playing football and other sports.



To provide a safe and encouraging environment where young people can come together and enjoy structured sports and learning opportunities.



To help the young people of the Tulse Hill and Brixton area fulfil their potential and improve their well-being both physically and emotionally through targeted support to children and families.

WHY SMP?

- 20 years of experience of being embedded in the local community
- Established in and trusted by a local community often sceptical of 'projects' as they have been used and let down by so many; SMP make a difference to local young people's lives over a long period of time
- Founded by someone who knows and cares about the local area and respects it and is respected by the people in it
- Core staff have been developed from within the programme; i.e. young people work with someone 'just like them'
- Pioneer of a true grassroots 'trauma-informed' approach
- Focused on early intervention and well-being, understanding how that can have a profound impact on the lives of young people with complex backgrounds and needs
- Knows the local young people better than any other organisation (so much so that it sometimes provides them as participants to other programme)
- Works in the community beyond the programme; facilitating relations and conversations between young people and schools, police and other local service providers
- Has maintained a £10 signing-on fee for St. Matthew's FC since inaugural 2005-06 season, ensuring accessibility for local young people

ASPIRATION STATEMENT

The St. Matthew's project is determined to ensure that the young people of the Tulse Hill and Brixton area can fulfil their potential. No child or young person should ever go hungry, be exposed to violence or live in poverty.

Football is a game that brings people together, engenders collaboration and trust and inspires passion and loyalty. Our mission is to use football as a gateway for young people to come together and provide for them structure and learning opportunities in a safe and encouraging environment. Our young people often get left behind, overlooked or banished to a headline about violence or underachievement. Our focus is on their wellness, based on an understanding that regularly active, collaborative young people are happier, healthier and more resilient.

Working with them day in, day out for two decades now, the St. Matthew's Project knows that local young people have hopes, fears and aspirations like everyone else, that can be channelled to deliver positive outcomes — for the young people themselves, as well as the local area and local community.

The St. Matthew's project has now been working in a deep and committed way, in a small part of London for 20 years. This has built a trust and an understanding that very few organisations working with young people have. We know our young people and they know us; our coaches have been through our programme so can relate and are relatable.

Our ambition is to continue this early intervention and we will continue to be embedded in the local area, and to understand each individual young person we work with, their challenges and hopes, in order to help them build a future and fulfil their potential.



CHAIR'S FOREWORD

This annual report gives an overview of the valuable work we carry out in our local community. It provides an insight into the impact it has not just on our participants, but also their families and the wider neighbourhood. It is testament to our wonderful team of staff and volunteers that a charity of our relatively small size is able to reach so many people. At St Matthew's, we pride ourselves on being more than 'just' a football project. Football is merely the starting point from which we can go on to support children and young people with their personal development, and offer them access to further sporting, educational or employment opportunities as they get older. Through sustained engagement, we are able to develop strong and enduring relationships with young people. Some of the young people we work with would not feel comfortable turning to any other source of support.

Football is a powerful hook for young people in our area and experience has shown us that it is the best means to deliver support and guidance. Due to the relationships we have built up with young people and their families over a long period of time, we have earned a legitimacy to advise and help them in a way that other organisations cannot. As a result, we can maintain relationships with young people who are on the fringes of our community when they have cut themselves off from most or all of the other positive influences in their lives. Equally, it means that their families feel able to come to us for support when they are often reluctant to engage with statutory services. Our coaches are recruited from within the local community and include people who have come through the scheme themselves (including ex-gang members), who can then act as inspiring and positive role models to the participants. We find that using former participants as coaches not only has a knock-on effect for the individual concerned, but also on the young people they are working with, who begin to see what could be on offer to them in the future. Through our partnerships with Lambeth Council, Lambeth Contextual Safeguarding, Brockwell Park Management, Brockwell Park Community Partners, Brixton Police, the Tulse Hill and St. Matthew's Estates' TRAs and local schools, we know that we are unique in the area in the type of sport and training programme we deliver.





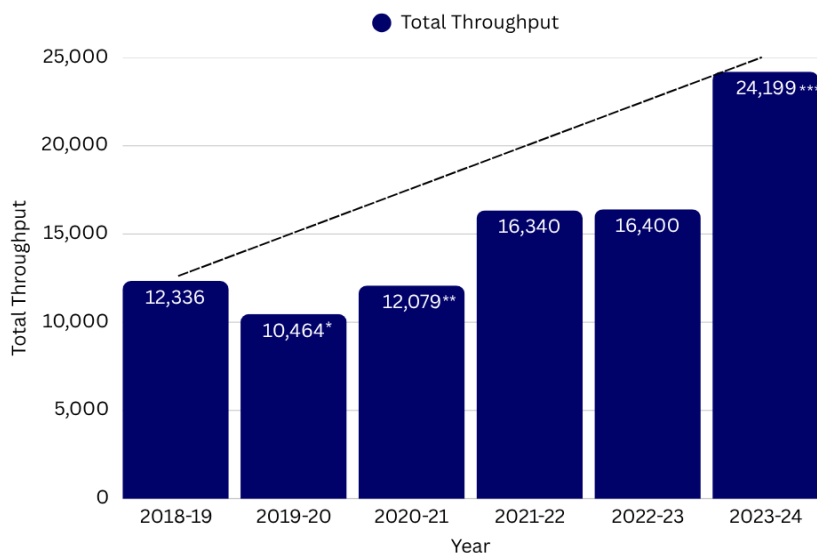
SMP PROGRAMME 2023-24

- Girls-only Saturday & Wednesday Football Club
- Girls-only Roupell Park Estate Football Club
- Girls-only After-School Football Club, Elm Green Secondary School
- Girls' Secondary School Tournament
- 5-16s Saturday Football Club
- Summer and Half-Term Holiday Football & Food Scheme
- Tulse Hill Estate Christmas Pen Football Tournament
- St. Matthew's Estate After-School Sports Club
- Jubilee Primary School After-School Football Club
- St. Matthew's F.C (U10s, U11s, U12s, U13s, U14s, U15s, 16s Girls U15s and Seniors A & B)
- Volunteer programme
- F.A Introduction to Coaching Football Course
- F.A UEFA-C Coaching Course
- Moving On employability programme
- Cage Football -Tulse Hill Estate
- Jubilee Primary School Parent & Toddler Club
- Fit 4 Life - mental health wellbeing programme
- Trauma-Informed staff training
- Young Tulse Hill Peer Researchers
- City Heights Academy Schools' Partnership
- Family Fitness Club: St. Matthew's & Tulse Hill Estates
- Men's 6-a-Side Football Night



SMP OUTCOMES & STATISTICS

TOTAL NUMBER OF ATTENDANCES 2018/19 TO 2023-24

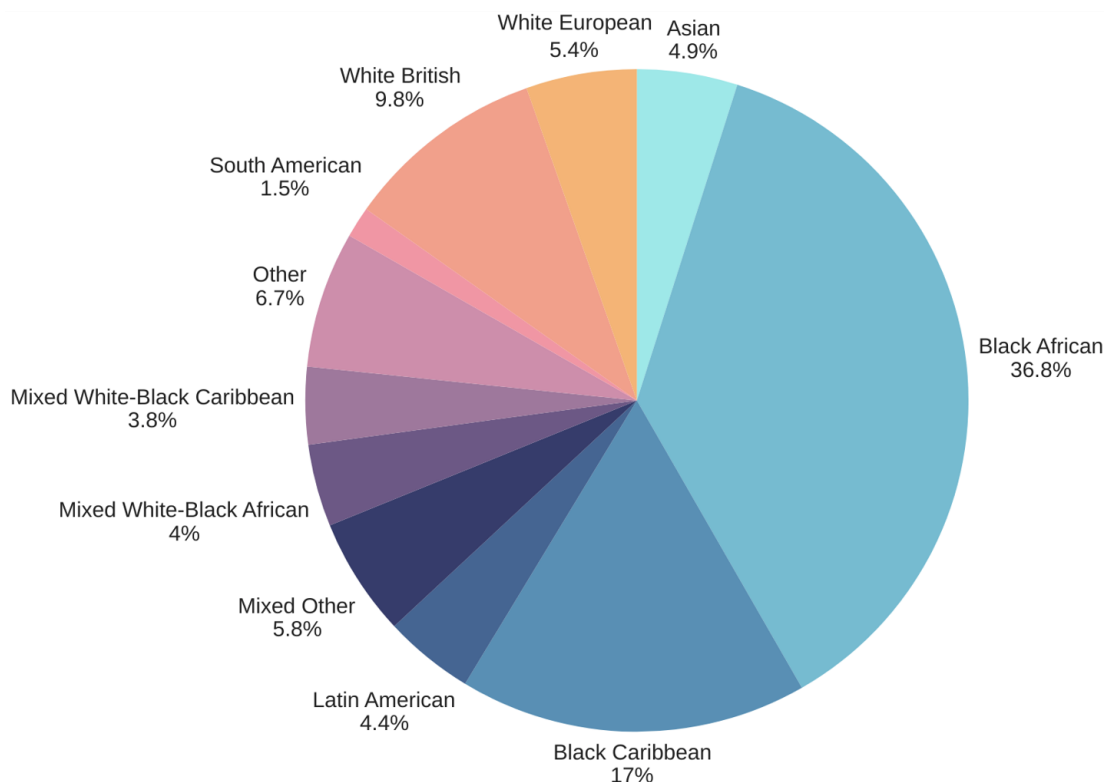


* 2019 -20: Loss of 12 weeks of activities due to Covid lockdown.

** 2020 -21: Loss of 16 weeks of activities due to Covid lockdowns.

*** 2023-24: Reporting year revised to cover September 1st 2023 - March 31st 2025.

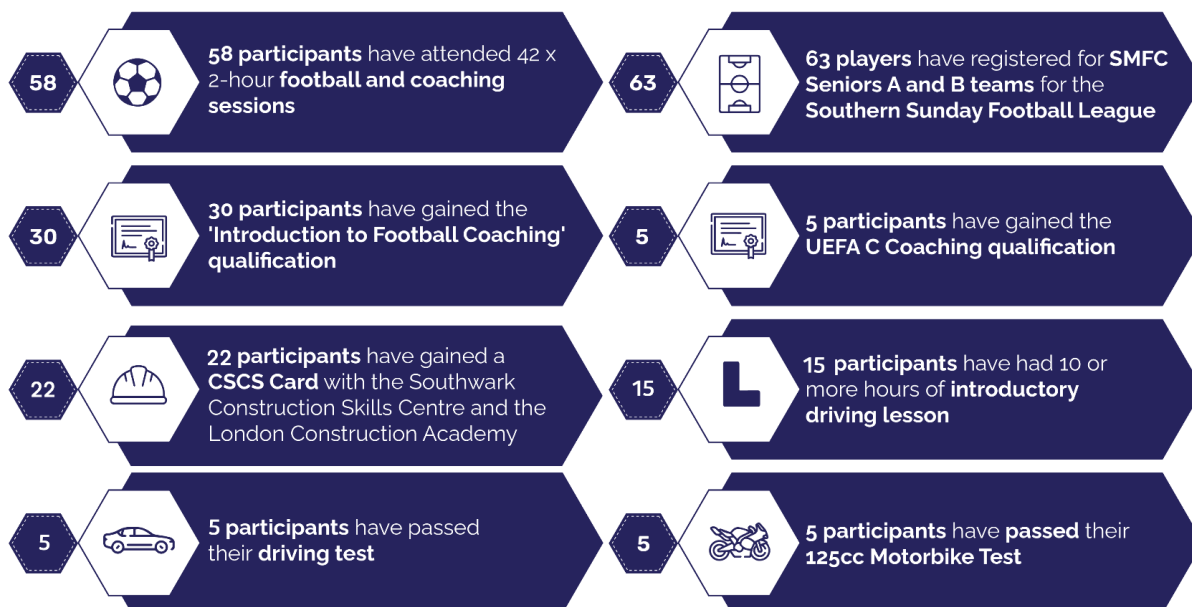
PARTICIPANT ETHNICITY 2023-24



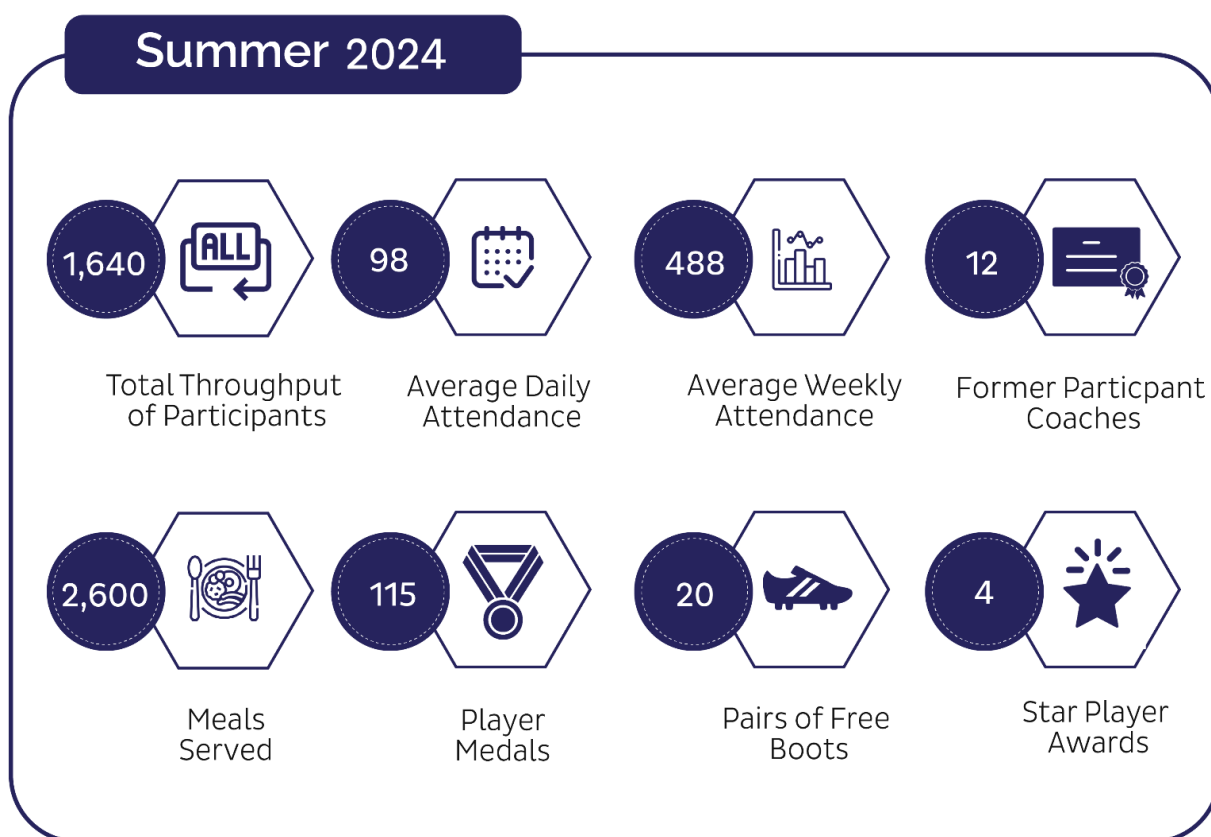


PROGRAMME ATTENDANCES

Moving On Programme



Summer 2024





TESTIMONIALS

'Thanks to the St. Matthew's team for all the support and opportunities you enable for local young people and families. As clear as ever for me on the gate this evening, the trust and faith they have in SMP just keeps growing.'

– John Jones, Mayor's Fund.

'Brilliant that after all these years the project is still here. Playing for this club was the best thing that happened to me growing up, and the memories I have with the lads and team will always be remembered.' – **Lee B. Original participant, St. Matthew's Estate (20th anniversary).**

'I am thoroughly impressed with the programme and wholeheartedly support its continuation. Thank you for your continued work and support, from the entire school community'.

– Marvin Charles, Headteacher, E-ACT City Heights Academy.

'Thank you for providing such a safe space and allowing for different individuals from all walks of life to feel loved, cherished and valued. A space for people to develop and grow as individuals and also as a collective community. SMP is indeed a movement and family like no other and glad I got the chance to be a part of this community and have memorable moments to share with you all again, and to be reunited again with you all in one space.'

– Aramide, former participant and coach. (20th anniversary).

"It's good to have a space to talk to someone because as young men we don't always express ourselves. It's not good to hold things in because it builds up. It's like having a pipe that's blocked, things build up and it bursts and people retaliate." – **Fit 4 Life member.**

'Massive thank you to SMP for helping me get my driver's licence. They have helped me from start to finish and have always been prepared to help me in so many ways, not just with my licence...'

– Andy, 22, Moving On Programme.

WHAT'S NEXT FOR SMP?

We have been using the Pavilion in Brockwell Park for over 18 years, and Lambeth Council granted us a rolling 10-year lease to take over the management of the building. We have planning permission to carry out refurbishment works and continue to apply for funding to refurbish the inside of the building to maximise its potential as a suitable learning space for the young people with whom we work. The Pavilion is of great importance not only for the future development of SMP's programme, but more critically for the on-going contribution it delivers to the wider community. SMP currently over-delivers in comparison to our size and we ideally need to increase the number of full-time staff we employ. We will once again, therefore, be making this one of our top funding priorities, in order to allow us to properly respond to the ever increasing demand for our services.

We believe that strengthening St. Matthew's in this way will help us to continue to deliver the best support to the communities we serve. We always want to ensure that our activities help to increase the confidence and motivation of those who take part; to help make sure strong and supportive community networks are created; and give more young people the chance to take part in positive activities which help them to steer clear of or break away from involvement in anti-social and other harmful behaviours, so that they can live their best lives.





OUR PEOPLE AND SUPPORTERS



As ever, we'd like to thank everyone who has been involved in supporting the work of SMP over the past two decades; it could never happen without the support of our funders, donors and partners.

We would also like to extend our huge thanks for the continued support of our board of trustees, our staff and volunteers.

This review is a celebration of the efforts and commitment of our staff, trustees, partners, volunteers and participants. We have built a team with a shared vision and together we are making a positive difference. Our staff, volunteers and trustees are the key to our growth and success; they are involved and engaged not just with us but with all the young people we support. We would like to thank them for the time and invaluable resources they are putting into our work, helping to make the SMP the special organisation it is – may their effort and dedication continue to help change the lives of young people in the Tulse Hill and Brixton area and beyond. Any success we've had is about the people, the volunteers and everybody involved in supporting SMP on a daily, weekly basis.

HIGHLIGHTS OF THE YEAR

AUTUMN

September

A busy start to the SMP year saw some of our regular Saturday Club girls enjoying a trip to the London Dungeon; one happy family attending the Palace v Wolves Premier League encounter, courtesy of a kind member of the public who offered us free tickets; and SMP member, Ivanildo, signing for the West Ham United F.C Academy.



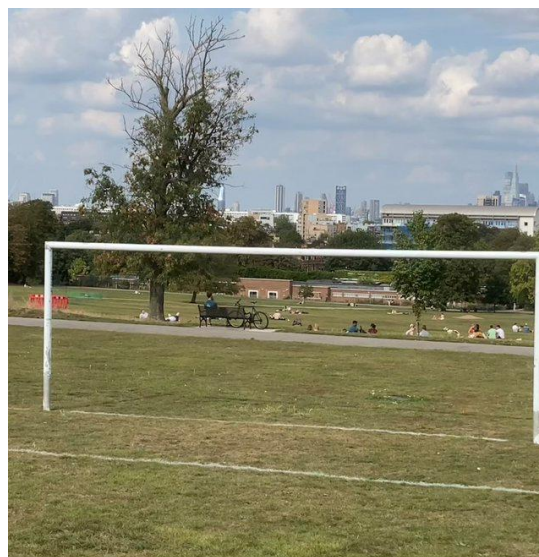
Never ones to sell *'The Dream'* but a huge well done to Ivanildo, who arrived from Guinea-Bissau aged 6 without a word of English, and was mentored by our Portuguese-speaking coach, Mario, from day one. It's been a long journey that has witnessed the best and worst in youth football practices along the way. And whatever the final outcome, we'll be here for him.



Annual Report of the Trustees For the period ended 31 December 2024

SMFC got off to a good start in the London County Saturday Youth League 2023-24 season with the latest U10s team notching up a 2-0 win at the 'Stadio Del Brockwell'. The new manager, Adam, also wore the famous blue and black himself not so long ago, now the latest product of the SMP participant-coach pipeline. Huge thank you, too, to KMCO Group for another new kit and CEO, Martin, for paying us a visit.

We were also greatly indebted to the Brockwell Park management team for finding SMFC's older age-group teams an alternative 11-a-side home pitch after the recent Pokémon event – not even listed initially on Lambeth Council's summer programme – trashed our usual pitch. It was not ideal, facing east, but it saved our season.



Our free Saturday Club turn-up-and play sessions have also been thriving, proof that not every young person wants to play for a team or 'get scouted', and can still greatly benefit from coaching, fitness and football in a fun, pressure-free environment.



ST. MATTHEW'S PROJECT

Annual Report of the Trustees For the period ended 31 December 2024

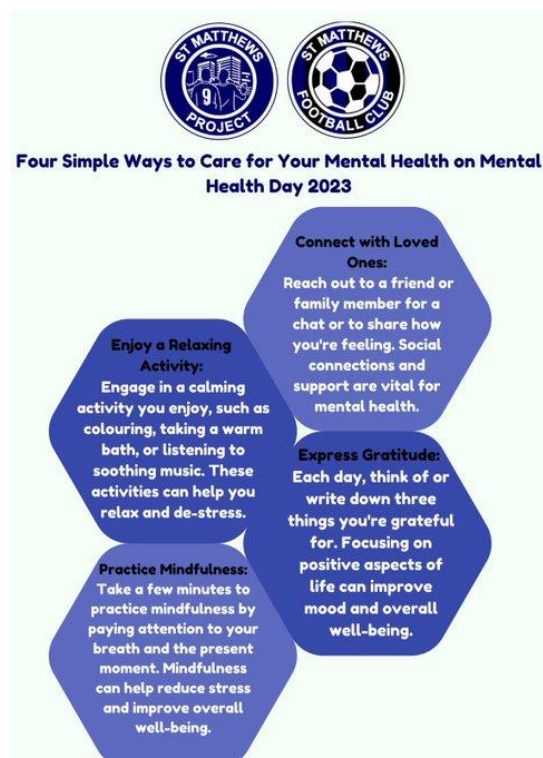


SMP Project Coordinator, Dwight, along with members of the SMP Youth Board attended a Dallaglio Rugby Works event aboard the Clipper Stad Amsterdam, moored by London Bridge, where they got to share their thoughts with the corporate world about issues affecting them.



October

SMP celebrated World Mental Health Day and shared wellbeing tips with our members and on social media.



ST. MATTHEW'S PROJECT

Annual Report of the Trustees For the period ended 31 December 2024

Massive well done to Farah on his very first game as a referee in England. Farah, a Sudanese refugee, came to us via his mentor, Ella, at Lambeth Council. He'd been a ref in Sudan and wanted to get his F.A qualification through us. SMP coaches accompanied him to his first few games to offer support and to ensure that he was treated with respect. Many thanks, too, to the London County Saturday Youth League for taking him on and giving him games and experience.



A big thumbs up for our October half-term holiday sessions in Brockwell Park, with an average attendance over the three days of 118 young people!



ST. MATTHEW'S PROJECT



Annual Report of the Trustees For the period ended 31 December 2024

Due to the success of our Family Fitness sessions on St. Matthew's Estate, we extended the programme to Tulse Hill Estate. As well as encouraging families to improve their fitness levels, the sessions seek to foster better parent-child relationships. By encouraging parents and children to spend time together engaged in high quality and constructive activities like these fitness sessions, we hope to strengthen parents' ability to engage with other aspects of their child's development, so that they have a full understanding of the issues facing their children, a knowledge of the available support services and the confidence to access them.



SMP's very own three lions, Dwight, Evon and Daniel, joined coaches from across the country at St. George's Park for the F.A's 2023 Black History Month Conference, celebrating the contributions of black role models in the game.



ST. MATTHEW'S PROJECT

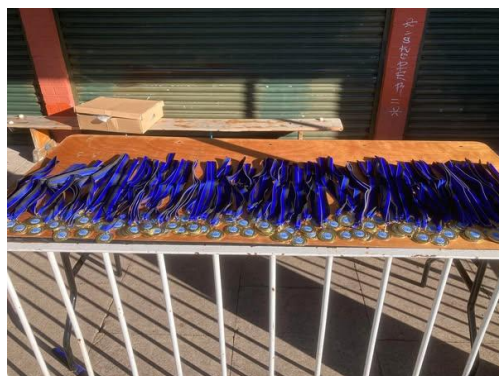
Annual Report of the Trustees For the period ended 31 December 2024



WINTER

November

At the request of John O's mum, we had another special Saturday Club session in Brockwell Park in his memory with medals and meals for everyone. John, a former Saturday Club member himself, will always be in the thoughts of everyone who knew him at SMP.



SMFC Girls were on the road throughout the 2023-24 season, playing all their matches at a central venue in the SW Super League at Barn Elms Sports Centre, Barnes. A difficult journey – bus, tube, train, bus – but this did not deter them!



Annual Report of the Trustees For the period ended 31 December 2024

December

We held a special final Saturday Club session of the year in Brockwell Park, going out in true festive style once again with lots of special prizes and treats given away in our Christmas Raffle. Prizes included: Christmas hampers, air fryers, £50 Tesco vouchers, £50 JD Sports vouchers, tins of chocolates and brand-new football boots. Members also enjoyed tea, coffee and hot chocolate, mince pies, Christmas cakes, mulled wine – and a special appearance by Santa. A massive thank you to long-time SMP supporter Judy Byrne and her friend who made this all possible by raising over £5,000 with a sponsored bike ride across India.



We also had a great day at our Christmas Cage football event on Tulse Hill Estate, with hot food, medals, music and treats. A huge thank you, too, to PC Joe Shaw and Lambeth Police for the sack of Christmas presents which were very well received!



Annual Report of the Trustees For the period ended 31 December 2024

January

2024 began with yet another wet start when the first Saturday Club of the year, which was due to take place in Brockwell Park, was cancelled due to waterlogged conditions. SMFC league games were also called off across three different boroughs. Sadly, this scenario is becoming all-too-familiar, with multiple sessions and matches lost to heavy rain, particularly during January and February. Consequently, we believe it is time to take climate change seriously and address the impact it is having on us now. It might even be worth considering moving youth league football sessions so that they take place during the spring and summer.



SPRING

The New Year saw SMFC having to relocate to Clapham Common in order to play 11-a-side games (U12s, U13s, U14s, U15s and U16s teams) after our temporary pitch in Brockwell Park proved to be unplayable once the rains came due to water retention on one half of the playing surface. A huge thank you to the Brockwell Park Management team for finding us another home for the rest of the season. Being unable to complete our fixtures would have had a huge impact on the club with the likely exodus of many players. We were hoping to return to the '*Stadio Del Brockwell*' by September and the new season, but this proved to be a false dawn and we are now resigned to playing at least two seasons at Clapham.



ST. MATTHEW'S PROJECT

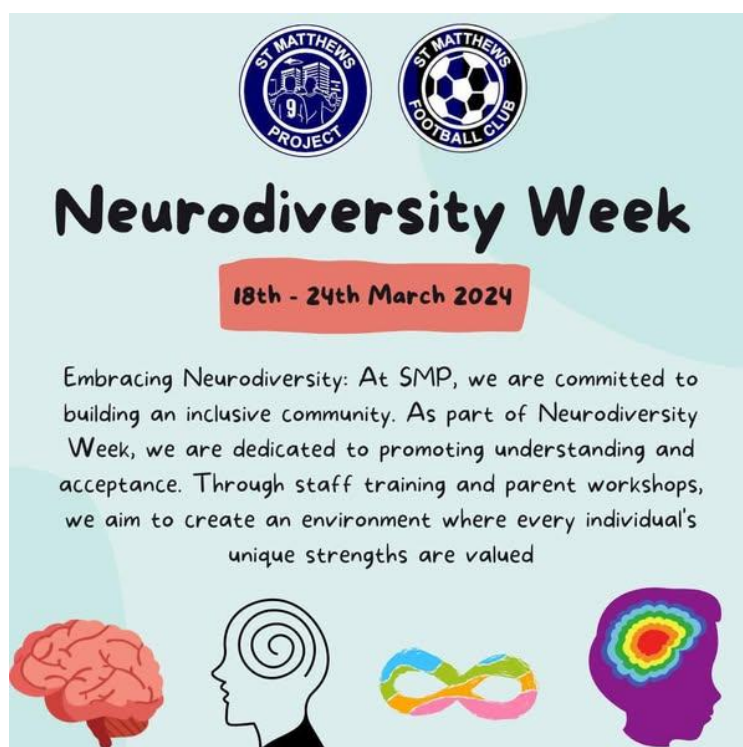
Annual Report of the Trustees For the period ended 31 December 2024



We were honoured to be presented with the Sporting Achievement Award at the Lambeth Civic Awards 2024. Welcome acknowledgement for all the hard work and dedication all our staff and volunteers put into the Project. A huge thank you to everyone who nominated us. Perfect timing for our 20th anniversary!



For Neurodiversity Week our Wellbeing Outreach Worker, Savannah, made a neurodiversity pledge, and it was great to see so many parents and carers reach out to her for support and guidance.



ST. MATTHEW'S PROJECT

Annual Report of the Trustees For the period ended 31 December 2024



Another busy half term in Brockwell Park saw an average attendance of 94 at our 3 sessions, and nearly 400 meals, 15 Grow Pots and 16 pairs of boots given out!



The SMP Family Fitness Club, a free, fun workout, was alive and kicking on Tulse Hill Estate every Saturday morning. It was great to see it building on the success of the pilot scheme on St. Matthew's Estate, Brixton.



ST. MATTHEW'S PROJECT

Annual Report of the Trustees For the period ended 31 December 2024



There was a record turnout in March at our annual Lambeth Schools Girls' tournament at Ferndale Sports Centre, Brixton

- 11 schools
- 14 teams
- 131 girls
- 45 matches.

It was great to welcome back Elm Green School, West Norwood after a few years absence - and a huge well done to them on marking their return as champions! Congratulations also to Runners-Up, Dunraven, Streatham, and Fair Play Award winners, Platanos College, Stockwell. Huge well done to all involved.



Elm Green



Dunraven



Platanos

ST. MATTHEW'S PROJECT

Annual Report of the Trustees For the period ended 31 December 2024

It was also an equally busy day in Brockwell Park at our first Easter holiday scheme session of 5, with 85 participants in attendance and 100+ meals, some bonus Easter eggs and 16 pairs of brand new boots courtesy of one of our regular supporters being handed out.



During the holidays we replaced the boots on the right with the boots on the left (below), an example of the importance of our second-hand boot scheme. A huge thank you to all our donors.



Our Easter holiday staff team included 8 former participants, which was really encouraging to see.



Annual Report of the Trustees For the period ended 31 December 2024

SMP were delighted to have a visit in April from Chelsea F.C sensation Cole Palmer, who came down to Ferndale Sports Centre, Brixton and met with Project Coordinator, Dwight Barnett, and spent some time with some of our aspiring young footballers. Cole was with us to launch “Cif Re-kicks”. Cif is working with professional clubs and non-profit organisations across the UK to inspire on-pitch confidence through the restoration of used football boots, something that has been close to our heart for many years now.



Congratulations and a huge well done went out to our U12 and U14 girls at the end of the season. The U12s came out on top on in the Capital Girls League West Cup tournament at Barn Elms, while the U14s were crowned league champions! Big shout out, too, to our four Girls-Only Club coaches, all former SMP participants.



ST. MATTHEW'S PROJECT

Annual Report of the Trustees For the period ended 31 December 2024



There was a meeting of the generations in May at Tooting & Mitcham United FC's stadium for the annual '*Jane Bullock Memorial Cup*', as an SMFC Seniors IX made up of 8 former participants and 6 current SMP coaches took on TMUFC U23s, whose squad also included 2 former SMFC players. It was great to reunite with former SMFC manager and SMP lead coach, Ashley Bosah, who was managing the TMUFC U23s. The boys were cheered on by the SMFC U14s who had a double-banker league fixture at TMUFC in the morning, maintaining their unbeaten run with a 1-1 draw and a 5-1 win. The boys stayed on to get behind the Seniors and their manager, '*Gaffa Maz*'! They also went on to finish the season unbeaten.



ST. MATTHEW'S PROJECT

Annual Report of the Trustees For the period ended 31 December 2024



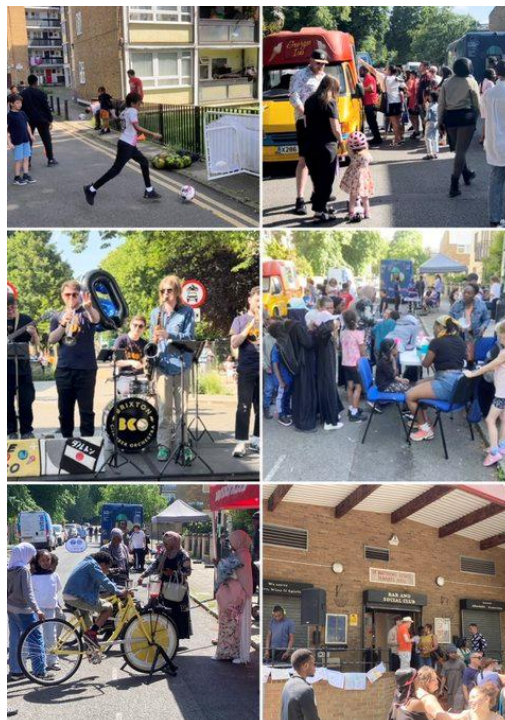
SUMMER

SMP 20th Anniversary

In 2004, what had started out as a kickabout in Brockwell Park for kids off St. Matthew's Estate became a summer holiday scheme, with two sessions a week on Monday and Wednesday afternoons. It was only meant to last the six weeks. An award ceremony in the St. Matthew's Estate tenants' hall at the end of the holiday was a chance for everyone to say goodbye and go back to whatever they were doing. But twenty years later, here we are...God moves in mysterious ways.



On Sunday, 2 June we celebrated our 20th anniversary back where it all began, on the St. Matthew's Estate in Brixton. We were delighted at the great turnout which saw 400 free meals, 100 free ice creams and 200 free smoothies consumed, face painting, arts and craft, 2 smoothie bikes, a visit from Brixton Fire Brigade and Police, Groove School DJ and a performance from the Brixton Chamber Orchestra. But above all, it was a fantastic coming together of our community!



ST. MATTHEW'S PROJECT

Annual Report of the Trustees For the period ended 31 December 2024



SMP were guests at the London Construction Academy's 10th anniversary at Smithfields in the City of London. Over 25 young people from SMP have gained CSCS cards and other construction industry certificates at the LCA via our Moving On employability programme funded by the Walcot Foundation. On the same day, just a short walk away at the Old Bailey, the jury was out in a murder trial involving two former SMP members, a stark reminder of the very differing pathways young people can take in life.



July saw the annual SMP award ceremony at Alleyn's School, Dulwich, with over 100 young people and parents in attendance. Awards went to SMFC players and SMP participants across the board.



Annual Report of the Trustees For the period ended 31 December 2024

SMFC Girls with their trophies and awards

...And a great day out was had by all the girls from City Heights Academy on our Fit 4 Life wellbeing programme, who enjoyed some go-karting and a trip to Nando's by way of an end-of-term send off!



Our Fit 4 Life programme also provides a weekly drop-in space for young people aged 16-25 from the Tulse Hill and Brixton area, predominantly from the global majority. Many face challenges such as poverty, trauma, ACEs, mental health issues (anxiety, depression, low self-esteem), and exposure to serious gang violence. SMP takes a trauma-informed, culturally competent approach to provide these young people with a safe space for support and well-being.



ST. MATTHEW'S PROJECT

Annual Report of the Trustees For the period ended 31 December 2024



A busy summer period also saw the first batch of 36 brand new laptops going out to local young people in genuine need. No more having to rely on libraries, other spaces and mobile phones to do their studies! Massive thank you to Lambeth Council and the Digital Inclusion Fund.



SMP Summer Holiday Scheme stats...

- Average daily attendance: 98
- Average weekly attendance: 488
- Meals served: 2,600
- Medals: 115
- Star Players: 4
- Football boots recycled: 20
- Former SMP participant coaches: 12

And a huge thank you to Lambeth Council HAF2024 for the funding!





In the period of SMP's old financial year of 1 September 2023 to 31 August 2024, we spent £47,952 on nutritious meals for young people. A massive thank to all the funders and donors, large and small, who made this possible.



Annual Report of the Trustees For the period ended 31 December 2024

AUTUMN September 2024

We kicked off the new Autumn schedule with a great staff training session, one of our best ones to date. It was a great opportunity for the Project Coordinator and Wellbeing Officer to connect and build relationships with the SMFC coaches, looking ahead to the new football campaign. Fantastic, too, to welcome home and gain some invaluable insights from former SMP Lead Football Coach, Ashley Bosah, now running the youth set up at Tooting & Mitcham United F.C.



SMFC U15s kicked off their season in September at a sun-kissed Clapham Common. It meant a second season in exile for our 11-a-side teams, but any hopes of returning to the '*Stadio Del Brockwell*' before the season was out were sadly dashed due to the ongoing restoration works in the park. We are now aiming to return for the start of 2025-26 season.



ST. MATTHEW'S PROJECT

Annual Report of the Trustees For the period ended 31 December 2024



And on the SMFC Girls' front, it was great to have Jess King, Regional Talent ID Coach (South London), come out to Barn Elms to watch our girls play their first game of the new season and meet our coaches. Jess is hoping to find a viable way forward for regular girls' league football in south London.



Huge well done to SMP member Alexis who was invited to the London Youth 'Born Ambitious' network event and got to meet their patron, HRH The Duke of Edinburgh. Alexis has been a great ambassador for SMP.



In October we collected some lovely items of furniture from one of our major funders, the Berkeley Foundation. The items, which were previously housed in luxury show flats at the Oval, went out to families in genuine need. A massive thank you to all at Berkeley.



ST. MATTHEW'S PROJECT

Annual Report of the Trustees For the period ended 31 December 2024

We were excited to launch our Friday night games' club in October. As part of our Digital Inclusion Funding from Lambeth Council, young people from across the project had the opportunity to join us on Tulse Hill Estate and at our office space in Brixton to enjoy playing fun, board and age-appropriate computer games and socialise with their peers.



November saw visits from representatives from the Police and the F.A. It was great to have PCs Emily Marshall, Joe Shaw and Joe Seddon from the Trust, Confidence and Engagement team at Lambeth and Southwark Police drop in at one of our girls-only football session at Ferndale Sports Centre, Brixton to talk about violence against women and girls.



Annual Report of the Trustees For the period ended 31 December 2024

...And another visitor to Ferndale was Peter Augustine, Coach Development Officer (D&I) London and South Region, who came down to meet some of our SMFC team managers and players at our Tuesday and Thursday training nights. We thank Peter for his ongoing support for our coaches as they continue to develop and learn.



WINTER

Our well-being Christmas gift boxes were well received by our Wednesday night Girls-Only Club members at Ferndale Sports Centre, Brixton. Boxes were also given out at our Saturday Club sessions and to all our female coaches.



ST. MATTHEW'S PROJECT

Annual Report of the Trustees For the period ended 31 December 2024



A busy Christmas at SMP saw 25 female wellbeing gift boxes, 13 Christmas hampers, 15 pairs of brand new football boots and over 70 Christmas presents delivered. A huge thank you to all the donors who made it possible! And a special shout out to the Metropolitan Police's Team London Bridge and Lambeth Trust, Confidence and Engagement Team for Lambeth and Southwark for another fantastic batch of Christmas presents this year for our members.





Annual Report of the Trustees For the period ended 31 December 2024

Financial Review

During 2024 the Trustees took the decision to change the accounting year end date from 31st August to 31st December. This is to enable a clearer representation of the activities of SMP by better aligning funding income with related expenditure. Accordingly, the accounts presented represent a 16-month period from 1st September 2023 to 31st December 2024. The accounts show a deficit for the 16-month period of £50,107. The deficit is distorted by the fact that the accounting period covers two calendar 4th quarters, a period when grant income is historically low for SMP. The deficit therefore distorts the true performance of SMP.

Funding for the Charity comes from a variety of sources including grants and donations from trusts and individuals. 2023/24 was another very strong period for donations and legacies with income of £448,084 for 16 months (2023: £324,554). Overall, the financial position of SMP has remained strong with significant cash and reserves. Since the end of the year income flow has been more challenging with some funding having reached the end of a 3-year cycle. The Trustees and Executive remain focused on identifying additional funding pipelines as the Charity expands its engagement with the local community.

Overall, the financial position of SMP has remained strong with significant Cash and Reserves. The trustees' view is that SMP should continue to plan to broaden its activities and reach to further the Charity's aims. This is reflected in the additional staff that have been recruited to further implementation.

Included in total funds are amounts totalling £92,409 (2023: £114,328) which are restricted. These monies have either been raised for, and their use restricted to, specific purposes, and/or they comprise grants subject to grantor imposed conditions. Details of the movement on these restricted funds can be found in note 7 to the accounts together with an analysis of movements in the year.

Reserves Policy

The Trustees have examined the requirements for free reserves, i.e. those unrestricted funds not invested in tangible fixed assets. The Trustees consider that, given the nature of the Charity's funding, free reserves should be equivalent to approximately 3 months general fund expenditure. The Trustees are of the opinion that this provides sufficient flexibility to cover temporary shortfalls in incoming resources and will allow the Charity to cope and respond to unforeseen emergencies whilst specific action plans are implemented. At 31 December 2024 the Charity had net free reserves of £111,872 (2023: £140,060) as follows:

	2024 £	2023 £
Total reserves	204,281	254,388
Less: restricted funds	(92,409)	(114,328)
Free reserves	111,872	140,060
Free reserves requirement:		
3 month's budgeted routine expenditure	110,000	100,000



Annual Report of the Trustees For the period ended 31 December 2024

Going Concern

After making appropriate enquiries, the trustees have a reasonable expectation that the charitable company has adequate resources to continue in operational existence for the foreseeable future. For this reason, they continue to adopt the going concern basis in preparing the financial statements. Further details regarding the adoption of the going concern basis can be found in the Accounting Policies.

Responsibilities of Trustees for the Financial Statements

The Trustees are responsible for preparing the report and the financial statements in accordance with applicable law and United Kingdom Generally Accepted Accounting Practice. Charity law in England and Wales requires the Trustees to prepare financial statements for each financial period which give a true and fair view of the state of affairs of the Charity and of the incoming resources and application of resources of the Charity for that period.

In preparing those financial statements, the Trustees are required to:

- select suitable accounting policies and apply them consistently;
- observe the methods and principles of the Charities SORP;
- make judgements and estimates that are reasonable and prudent;
- state whether applicable accounting standards have been followed, subject to any departures disclosed and explained in the financial statements; and
- prepare the financial statements on the going concern basis unless it is inappropriate to presume that the activities of the Charity will continue.

The Trustees are responsible for keeping adequate accounting records which disclose with reasonable accuracy at any time the financial position of the Charity and enables them to ensure that the financial statements comply with the Charities Act 2011, the Charity (Accounts and Reports) Regulations 2008 and the provisions of the governing document. The Trustees are also responsible for safeguarding the assets of the Charity and hence for taking reasonable steps for the prevention and detection of fraud and other irregularities. The Trustees are responsible for the maintenance and integrity of the Charity and financial information included in the Charity's website.

Approval

The report of the Trustees was approved by the Trustees on 12 September 2025 and signed on their behalf by:

Jenny Greenfield
Chair of the Board

ST. MATTHEW'S PROJECT



Report of the Independent Examiner to the Trustees of St Matthews Project For the year ended 31 December 2024

I report on the accounts of the St Matthew's Project (the Charity) for the year ended 31 December 2024, set out on pages 43-49.

Respective responsibilities of trustees and examiner

The trustees (who are also the directors of the company for the purposes of company law) are responsible for the preparation of the accounts. The trustees consider that an audit is not required for this year under section 144(2) of the Charities Act 2011 ("the 2011 Act") and that an independent examination is needed. The charity is required by company law to prepare accrued accounts and I am qualified to undertake the examination by being a qualified member of the Institute of Chartered Accountants in England and Wales.

Having satisfied myself that the charity is not subject to audit under company law and is eligible for independent examination, it is my responsibility to:

- examine the accounts under section 145 of the 2011 Act);
- to follow the procedures laid down in the general Directions given by the Charity Commission under section 145(5)(b) of the 2011 Act; and
- to state whether particular matters have come to my attention.

Basis of independent examiner's report

My examination was carried out in accordance with the general Directions given by the Charity Commission. An examination includes a review of the accounting records kept by the charity and a comparison of the accounts presented with those records. It also includes consideration of any unusual items or disclosures in the accounts and seeking explanations from you as trustees concerning any such matters. The procedures undertaken do not provide all the evidence that would be required in an audit and consequently no opinion is given as to whether the accounts present a 'true and fair view' and the report is limited to those matters set out in the statement below.

Independent examiner's statement

I have completed my examination. I confirm that no matters have come to my attention in connection with the examination giving me cause to believe:

1. accounting records were not kept in respect of the Company as required by section 386 of the 2006 Act; or
2. the accounts do not accord with those records; or
3. the accounts do not comply with the accounting requirements of section 396 of the 2006 Act other than any requirement that the accounts give a 'true and fair view which is not a matter considered as part of an independent examination; or
4. the accounts have not been prepared in accordance with the methods and principles of the Statement of Recommended Practice for accounting and reporting by charities.

I have no concerns and have come across no other matters in connection with the examination to which attention should be drawn in this report in order to enable a proper understanding of the accounts to be reached.

Sheila Parry ACCA
12 September 2025



ST. MATTHEW'S PROJECT

Statement of Financial Activities (incorporating the income and expenditure account) For the period ended 31 December 2024

	Note	Unrestricted Funds 2024 £ 16 months	Restricted Funds 2024 £ 16 months	Total 2024 £ 16 months	Unrestricted Funds 2023 £ 12 months	Restricted Funds 2023 £ 12 months	Total 2023 £ 12 months
Income from:	2						
Donations and legacies		79,380	367,824	447,204	112,038	212,457	324,495
Charitable activities		880	-	880	60	-	60
Total Income		80,260	367,824	448,084	112,098	212,457	324,555
Expenditure on:							
Staff costs	3a	81,559	221,813	303,372	53,958	93,912	147,870
Staff expenses		3,799	-	3,799	2,833	570	3,403
Service delivery	3b	-	167,930	167,930	4,095	185,676	189,771
Office, administration & support	3c	22,190	-	22,190	15,523	-	15,523
Independent examination		600	-	600	600	-	600
Gifts		300	-	300	-	-	-
		108,448	389,743	498,191	77,009	280,158	357,167
Net (expenditure)/income before tax		(28,188)	(21,919)	(50,107)	35,089	(67,701)	(32,612)
Tax payable	4	-	-	-	-	-	-
Net income after tax		(28,188)	(21,919)	(50,107)	35,089	(67,701)	(32,612)
Transfers between funds		-	-	-	-	-	-
Other recognised gains/(losses)		-	-	-	-	-	-
Net movement in funds		(28,188)	(21,919)	(50,107)	35,089	(67,701)	(32,612)
Total funds brought forward		140,060	114,328	254,388	104,971	182,029	287,000
Total funds carried forward		111,872	92,409	204,281	140,060	114,328	254,388

ST. MATTHEW'S PROJECT



Balance Sheet As at 31 December 2024

	Note	Unrestricted Funds 2024 £	Restricted Funds 2024 £	Total 2024 £	Total 2023 £
Current Assets					
Debtors	5	-	35,000	35,000	-
Cash At Bank And In Hand		117,982	57,409	175,391	258,150
		117,982	92,409	210,391	258,150
Creditors - Amounts Falling Due Within One Year	6	6,110	-	6,110	3,762
Net Current Assets		111,872	92,409	204,281	254,388
Net Assets		111,872	92,409	204,281	254,388
Represented By:					
Restricted Funds	7	-	92,409	92,409	114,328
Unrestricted Income Funds		111,872	-	111,872	140,060
Total Funds		111,872	92,409	204,281	254,388

These accounts have been prepared in accordance with the provisions applicable to companies subject to the small companies regime as set out in Part 15 of the Companies Act 2006. The company is entitled to exemption from audit under section 477 of the Companies Act 2006 for the year ended 31 December 2024 and no notice requiring an audit has been deposited under section 476.

The Trustees acknowledge their responsibilities for:

- ensuring that the company keeps accounting records which comply with section 386 of the Companies Act 2006
- preparing financial statements which give a true and fair view of the state of affairs of the company as at the end of each financial period and of its profit or loss for the financial period in accordance with the requirements of sections 394 and 395 and which otherwise comply with the requirements of the Companies Act 2006 relating to financial statements, so far as is applicable to the company.

The financial statements were approved by the Trustees on 12 September 2025 and signed on their behalf by:

David Keen
Treasurer

Company registration 7007350

ST. MATTHEW'S PROJECT



Notes to the Financial Statements For the period ended 31 December 2024

1. Accounting Policies

St. Matthews Project is a charitable company limited by guarantee without share capital, with use of 'Limited' exemption, and registered in England with registration number 07007350. Its registered office address is 90 Gaskarth Road, Balham, London, SW12 9NW. The accounts are presented in GBP rounded to £1.

The principal accounting policies adopted, judgements and key sources of estimation uncertainty in the preparation of the financial statements are as follows:

Basis of accounting

The financial statements have been prepared in accordance with Accounting and Reporting by Charities: Statement of Recommended Practice applicable to charities preparing their accounts in accordance with the Financial Reporting Standard applicable in the UK and Republic of Ireland (FRS 102) (effective 1 September 2023) - (Charities SORP (FRS 102)), the Financial Reporting Standard applicable in the UK and Republic of Ireland (FRS 102) and the Companies Act 2006. The financial statements have been prepared on a natural or alternative basis of analysis as per SORP 4.6.

The Charity meets the definition of a public benefit entity under FRS 102.

The Charity has availed itself of the Companies Act 2006 and adapted the Companies Act format to reflect the special nature of the Charity's activities.

Going Concern

The Charity is a going concern. Taking into account reserves and anticipated recurring income, the Trustees are confident that the Charity remains a going concern for at least twelve months from the date of approval of these accounts.

Income recognition

Voluntary income and donations (including legacies) are accounted for once the Charity has entitlement to the income, it is probable the income will be received and the amount of income receivable can be reliably measured. Income from the recovery of tax on gift aided donations is accounted for in the period to which the relevant donation is received. Grant income is recognised on a receivable basis.

Interest on funds held on deposit is included when receivable and the amount can be measured reliably by the Charity; this is normally upon notification of the interest paid or payable by the bank.

No amounts have been included in the financial statements for services donated by volunteers.

Expenditure recognition

Expenditure is accrued as soon as a liability is considered probable, and the amount of obligation can be measured reliably. Longer term liabilities are discounted to present value. The Charity is not registered for VAT and accordingly expenditure includes VAT where appropriate.

ST. MATTHEW'S PROJECT



Notes to the Financial Statements For the period ended 31 December 2024

1. Accounting Policies (continued)

Charitable expenditure includes those costs in fulfilling the Charity's principal objects, as outlined in the Report of the Trustees. These include governance costs which are incurred in connection with the administration of the Charity and compliance with constitutional and statutory requirements, which tasks are undertaken mainly by the Trustees. Governance costs also costs include costs relating to statutory independent examination and legal fees.

Taxation

The Company is a Registered Charity and is therefore exempt from taxation under the Income and Corporation Taxes Acts.

Tangible fixed assets

Tangible fixed assets, costing more than £2,000, are stated at cost less depreciation. Depreciation is provided at rates calculated to write off the cost of fixed assets, less their estimated residual value, over their expected useful lives on the following bases:

Office equipment: 5 years

Funds Structure

Unrestricted income comprises those funds which are available for use at the discretion of the Trustees in furtherance of the general objectives of the Charity and which have not been designated for other purposes.

Restricted funds are funds which are to be used in accordance with specific restrictions imposed by donors or which have been raised by the Charity for specific purposes. There are currently no restricted funds.

2. Income

	Unrestricted Funds 2024 £ 16 months	Restricted Funds 2024 £ 16 months	Total 2024 £ 16 months	Total 2023 £ 12 months
Donations & legacies				
Donations	48,180	-	48,180	15,057
Gift Aid	-	-	-	213
Grants	31,200	367,824	399,024	309,225
	<u>79,380</u>	<u>367,824</u>	<u>447,204</u>	<u>324,495</u>
Charitable activities				
Team subscriptions	880	-	880	60
	<u>880</u>	<u>0</u>	<u>880</u>	<u>60</u>
	<u>80,260</u>	<u>367,824</u>	<u>448,084</u>	<u>324,555</u>

ST. MATTHEW'S PROJECT



Notes to the Financial Statements For the period ended 31 December 2024

3. Expenditure

Included within expenditure are the following costs:

3a Staff costs	Unrestricted Funds 2024 £ 16 months	Restricted Funds 2024 £ 16 months	Total 2024 £ 16 months	Total 2023 £ 12 months
Gross salaries	135,006	152,549	287,555	141,720
Employers National Insurance	7,739	4,448	12,187	4,577
Employer pension contributions	3,275	355	3,630	1,573
	146,020	157,352	303,372	147,870

The average number of employees during the year was 10 (2023: 10). No employee received emoluments in excess of £60,000 during the year.

3b Service delivery	Unrestricted Funds 2024 £ 16 months	Restricted Funds 2024 £ 16 months	Total 2024 £ 16 months	Total 2023 £ 12 months
Coaching, tutoring & training	-	26,107	26,107	99,822
Food	-	54,223	54,223	45,689
Travel	-	4,402	4,402	6,169
Equipment/kit/facilities	-	47,198	47,198	30,501
Membership/league fees	-	1,958	1,958	1,969
Tours & events	-	1,200	1,200	460
Digital Inclusion	-	20,298	20,298	-
Other	-	12,544	12,544	5,161
	0	167,930	167,930	189,771

ST. MATTHEW'S PROJECT



Notes to the Financial Statements For the period ended 31 December 2024

3. Expenditure (continued)

3c Office & administration	Unrestricted Funds 2024 £ 16 months	Restricted Funds 2024 £ 16 months	Total 2024 £ 16 months	Total 2023 £ 12 months
Accountancy & payroll	6,259	-	6,259	5,266
Filming	8,215	-	8,215	-
Insurance	324	-	324	-
Printing & stationery	-	-	-	11
Software	-	-	-	144
Website	1,224	-	1,224	3,180
Other	6,168	-	6,168	6,922
	22,190	0	22,190	15,523

4. Taxation

As a charity, St. Matthews Project is exempt from tax on income and gains falling within the provisions of the Corporation Taxes Act 2010 or the Taxation of Chargeable Gains Act 1992 to the extent that these are applied to its charitable objects. No tax charges have arisen on the Charity.

5. Debtors

	2024 £	2023 £
Grants receivable	35,000	-

6. Creditors - Amounts Falling Due Within One Year

	2024 £	2023 £
Other creditors	686	690
Other creditors including taxation and social security	4,024	1,672
Accruals	1,400	1,400
	6,110	3,762

ST. MATTHEW'S PROJECT



Notes to the Financial Statements For the period ended 31 December 2024

7. Restricted Funds

7a Current year	At 1 September 2023 £	Income £	Expenditure £	Transfers £	At 31 December 2024 £
Service delivery related activities	114,328	326,766	(325,282)	0	115,812
7b Prior year	At 1 September 2022 £	Income £	Expenditure £	Transfers £	At 31 August 2023 £
Service delivery related activities	182,029	212,457	(280,158)	0	114,328

Service delivery related activities. Income received specifically for funding service delivery related activities.

8. Related Party Transactions

No Trustees (2023: none) received reimbursement for expenses incurred on charity business during the year.

The Trustees did not make any restricted donations to the charity during the year (2023: £nil).

9. Members Funds

The company is a private company limited by guarantee with no share capital. The liability of the members is limited to £10 in the event of a winding up.