



## **ST. MATTHEW'S PROJECT**

***17 Years in the Community 2004-2022***

**Company Limited by Guarantee  
Charity Registration Number: 1140964  
Company Registration Number: 7007350**

**Annual Report and Financial Statements**

**For the year ended 31 August 2022**

# **ST. MATTHEW'S PROJECT**

## **Annual Report and Financial Statements For the year ended 31 August 2022 Contents**

---



	<b>Page</b>
<b>Legal &amp; administrative information</b>	<b>2</b>
<b>Annual Report of the Trustees</b>	<b>3</b>
<b>Independent Examiner's report to the Trustees</b>	<b>50</b>
<b>Statement of financial activities</b>	<b>51</b>
<b>Balance sheet</b>	<b>52</b>
<b>Notes to the financial statements</b>	<b>53</b>



# ST. MATTHEW'S PROJECT

## Annual Report of the Trustees For the year ended 31 August 2022

---

<b>Charity Name</b>	St. Matthew's Project.												
<b>Charity Registration no</b>	1140964. The Charity was registered with the Charity Commission on 22 March 2011.												
<b>Company Registration no</b>	7007350.												
<b>Registered Office</b>	90 Gaskarth Road, London SW12 9NW												
<b>Governing Document</b>	The organisation is a charitable company limited by guarantee, incorporated on 2 September 2009. The company was established under a Memorandum of Association which established the objects and powers of the charitable company and is governed under its Articles of Association.												
<b>Mission Statement</b>	To provide a safe and encouraging environment where young people can come together and enjoy structured sports and learning opportunities. To help the young people of Lambeth fulfil their potential and improve their well-being both physically and emotionally through targeted support to children and families												
<b>Objectives</b>	<ol style="list-style-type: none"><li>1. To act as a resource for young people up to the age of 25 living in the south Brixton area by providing advice and assistance and organising programmes of physical, educational and other activities as a means of:<ul style="list-style-type: none"><li>• advancing in life and helping young people by developing their skills, capacities and capabilities to enable them to participate in society as independent, mature and responsible individuals.</li><li>• advancing education</li><li>• relieving unemployment</li><li>• providing recreational and leisure time activity in the interests of social welfare for people living in the south Brixton area who have need by reason for their youth, age, infirmity or disability, poverty or social and economic circumstances, with a view to improving the conditions of life of such persons.</li></ul></li><li>2. The promotion of community participation in healthy recreation, in particular children and young people aged between 6 and 25 by the provision of facilities for playing football.</li></ol>												
<b>Mission Statement</b>	To provide a safe and encouraging environment where young people can come together and enjoy structured sports and learning opportunities. To help the young people of Lambeth fulfil their potential and improve their well-being both physically and emotionally through targeted support to children and families.												
<b>Trustees</b>	<p>The Trustees who served during the year and who were serving at the date of this report were:</p> <table><tr><td>David Keen</td><td>Treasurer</td></tr><tr><td>Ryan Chishick</td><td>(resigned 4 May 2022)</td></tr><tr><td>Jenny Greenfield</td><td>Chair</td></tr><tr><td>Lekan Ojumu</td><td></td></tr><tr><td>James Alexander</td><td></td></tr><tr><td>Daisy Streatfield</td><td>(appointed 28 January 2022)</td></tr></table>	David Keen	Treasurer	Ryan Chishick	(resigned 4 May 2022)	Jenny Greenfield	Chair	Lekan Ojumu		James Alexander		Daisy Streatfield	(appointed 28 January 2022)
David Keen	Treasurer												
Ryan Chishick	(resigned 4 May 2022)												
Jenny Greenfield	Chair												
Lekan Ojumu													
James Alexander													
Daisy Streatfield	(appointed 28 January 2022)												



## ST. MATTHEW'S PROJECT

### Annual Report of the Trustees For the year ended 31 August 2022

---

<b>Management Committee</b>	Lee Dema Fiona McGee Dwight Barnett	Project Manager M&E Officer Football Development Officer
<b>Key Management Personnel</b>	The person in charge of directing, controlling, running and operating the Charity on a day to day basis is Lee Dema, the Project Manager.	
<b>Bankers</b>	Santander UK 301 St Vincent Street Glasgow G2 5NT	
<b>Independent Examiner</b>	Christine Cheung Poston ACCA 48 Samford House Charlotte Terrace Islington London N1 0JF	



# ST. MATTHEW'S PROJECT



## Annual Report of the Trustees For the year ended 31 August 2022

---

The Trustees submit their report and the financial statements of St. Matthew's Project ("the Charity") for the year ended 31 August 2022. The financial statements have been prepared in the format prescribed by the Statement of Recommended Practice: Accounting and Reporting by Charities (SORP 2015 (FRS102)) and the Financial Reporting Standard 102. The financial statements have been prepared on a natural or alternative basis of analysis as per SORP 4.6. The legal and administrative information set out earlier in this document forms part of this report. This report also constitutes a directors' report required by section 415 of the Companies Act 2006 as all Trustees of a charity company are directors.

### Public benefit

The Trustees have complied with their duty under Section 4 of the Charities Act 2011 to have due regard to public benefit guidance published by the Charity Commission.

### Who We Are

The St Matthew's Project provides a safe and encouraging environment where 3-25-year-olds can come together and enjoy structured football sessions and other activities. We help children and young people living mainly in the Tulse Hill and Coldharbour wards of Lambeth fulfil their potential and have a real impact on their community. What began as a kick-about in Brockwell Park is now a thriving youth project, which offers a growing array of programmes and services to over 300 young people each week, bringing them together from 3 different housing estates, which historically would not have anything to do with each other. The project has a dedicated team of 23 staff and trustees (2 full-time) and 7 volunteers, with extensive experience of working with a challenging target group and a thorough understanding of the local community and its needs. We also have an established reputation with local residents, the council and our funders for being able to deliver successful and credible programmes.

### Where We Work

The majority of our participants live in the Tulse Hill and Coldharbour wards of Lambeth which are within the most deprived 10% Deprivation Deciles nationally for crime and living environment. 95% of our participants are from a BAME background. As well as complex deprivation issues, the young people we work with also face health-related difficulties, including obesity, and a high prevalence of risk factors for mental health problems. Crime levels, and in particular gang-related activity, are high in our target area – Lambeth has the highest volume of serious youth violence in the capital with over 7,000 crimes in 10 years. It also has the greatest number of ambulance call-outs. 1/3 of all 2014 London shootings occurred in Lambeth and eight young men known to us have lost their lives due to gang-related incidents since 2011. Tensions continue to remain high in the local area, with gangs holding a strong influence over young people and their families. A combination of enforced membership and low aspirations has meant that gangs have traditionally offered a viable, albeit illicit, career path for many of the boys and young men in the local community. Some parents even turn a blind eye to young people's involvement in gangs and criminal activity as the opportunity for them to make some money can be a welcome relief to families living in persistent poverty.

It is part of our ethos to offer those we work with more than just the chance to participate in a football project. We support young people to make the transition from sports participation to accessing further sporting, educational or employment opportunities as they get older. Through continued engagement we help young people develop their personal skills and strengths and tackle any weaknesses they feel they might have. In this way, we aim to meet the needs of local young people, raise their aspirations and help them steer clear of a life of crime and gang-related activity. Due to the fact that we work with young people right up until they are in their mid-twenties, we are also well-placed to offer the those progressing through our programmes an established exit route into further structured and age-appropriate sporting and employment opportunities.

The importance of being firmly rooted in the local community and taking the time to develop the project incrementally has been fundamental to our success over the past 16 years. It has also allowed us to respond appropriately to the evolving needs of our users. Due to the relationship we have built up with local young people over a long period of time, we have earned a legitimacy to advise and help them in a way other organisations cannot. Consequently, more and more young people are benefiting from the services we offer, enhancing their life opportunities.

# ST. MATTHEW'S PROJECT

## Annual Report of the Trustees For the year ended 31 August 2022



Funders	Partners	SMFC Kit Sponsors
ANT Foden Berkeley Foundation Big Lottery Fund Black Fund Children In Need City Airport Community Trust Comic Relief Cottman Foundation Football Foundation Garfield Weston Henry Smith Charity Lambeth Council LEAP Leap Confronting Conflict London Community Foundation London Sport London Youth Mayor's Office KMCO Group Peters & Peters Solicitors Peter Minet Trust Sport England Sport Unites Streetgames Thrale Almhouses Walcot Foundation	Better PLC Brixton Police Brockwell Park Community Partners Brockwell Park Management City Heights Academy Clem Consultants Crystal Palace F.C Academy Effra Digital Football Foundation Fulham F.C Foundation High Trees Community Trust Jubilee Primary School Lambeth Early Action Partnership Lambeth Safeguarding Children Board Lambeth Sports & Recreation Services LEAP Leap Confronting Conflict London F.A London Youth Project 507 Roupell Park RMO South Central Youth Sported St. Matthew's Estate TRA Substance Social Research Tooting & Mitcham United F.C Tulse Hill Estate TRA Tulse Hill Safer Neighbourhood Team	Cottman Foundation  KMCO Group  McEvoy Maintenance





## EXISTING AIMS & OBJECTIVES



To act as a resource for young people up to the age of 25 living in the Tulse Hill and Brixton area by providing advice and assistance and organising programmes of physical, educational and other activities.



To promote community participation in healthy recreation, in particular children and young people aged between 3 and 25 by the provision of facilities for playing football and other sports.



To provide a safe and encouraging environment where young people can come together and enjoy structured sports and learning opportunities.



To help the young people of the Tulse Hill and Brixton area fulfil their potential and improve their well-being both physically and emotionally through targeted support to children and families.



## WHY SMP?

- *More than 18 years of experience of being embedded in the local community*
- *Established in and trusted by a local community often sceptical of 'projects' as they have been used and let down by so many; SMP make a difference to local young people's lives over a long period of time*
- *Founded by someone who knows and cares about the local area and respects and is respected by the people in it*
- *Core staff have been developed from within the programmes; i.e. young people work with someone 'just like them'*
- *Pioneer of a true grassroots 'trauma-informed' approach*

## ST. MATTHEW'S PROJECT

Annual Report of the Trustees  
For the year ended 31 August 2022



- *Focused on early intervention and well-being, understanding how that can have a profound impact on the lives of young people with complex backgrounds and needs*
- *Knows the local young people better than any other organisation (so much so that it sometimes provides them as participants to other programmes)*
- *Works in the community beyond the programmes; facilitating relations and conversations between young people and schools, police and other local service providers*
- *Has maintained a £10 signing-on fee for St Matthew's FC since inaugural 2005-06 season, ensuring accessibility for local young people*

## ASPIRATION STATEMENT

*The St. Matthew's project is determined to ensure that the young people of the Tulse Hill and Brixton area can fulfil their potential. No child or young person should ever go hungry, be exposed to violence or live in poverty.*

*Football is a game that brings people together, engenders collaboration and trust and inspires passion and loyalty. Our mission is to use football as a gateway for young people to come together and provide for them structure and learning opportunities in a safe and encouraging environment. Our young people often get left behind, overlooked or banished to a headline about violence or underachievement. Our focus is on their wellness, based on an understanding that regularly active, collaborative young people are happier, healthier and more resilient.*

*Working with them day in, day out for nearly 20 years, the St Matthew's Project knows that local young people have hopes, fears and aspirations like everyone else, that can be channelled to deliver positive outcomes — for the young people themselves, as well as the local area and local community.*

*The St. Matthew's project has worked in a deep and committed way, in a small part of London for more than 17 years. This has built a trust and an understanding that very few organisations working with young people have. We know our young people and they know us, our coaches have been through our programmes so can relate and are relatable.*

*Our ambition is to continue this early intervention and reach at least 40% of the young people in the Tulse Hill and Brixton area in the next three years. We will continue to be embedded in the local area, and to understand each individual young person we work with, their challenges and hopes, in order to help them build a future and fulfil their potential.*





## Chair's Foreword

The list of events laid out in the annual review reflect the importance of our work and the great team of staff and volunteers who help make it all possible. It is part of our ethos to offer those we work with more than just the chance to participate in a football project. We have continued to support young people to make the transition from sports participation to accessing further sporting, educational or employment opportunities as they get older. Through continued engagement we've helped young people develop their personal skills and strengths and tackle any weaknesses they feel they might have. In this way, we aim to meet the needs of local young people, raise their aspirations and help them steer clear of a life of crime and gang-related activity. Due to the fact that we now work with young people right up until they are in their mid-twenties, we are also well-placed to offer the those progressing through our programmes an established exit route into further structured and age-appropriate sporting and employment opportunities. The need for the services we offer continues to remain high, and, as the chart below shows, attendance numbers have seen the greatest year-on-year increase ever recorded.

We have built on and expanded our strong neighbourhood relationships around each child or young person we work with. Our experience has shown us that if a young person is viewed by the wider community - their peers, family, next door neighbours - in a constructive/positive light then the growth and development of that individual will be quicker and more sustainable as a consequence. SMP sees the community in which we work as our greatest asset and the



## ST. MATTHEW'S PROJECT

### Annual Report of the Trustees For the year ended 31 August 2022

relationships we have built up with young people, their families and other service providers in the area are fundamental to the sustainability of the project. At the core of everything we do are the young people we work with. They are the ones who drive what we do and every single one of them should be proud of the part they play in making the St. Matthew's Project the vibrant and successful project it is today. Thank you to you all.

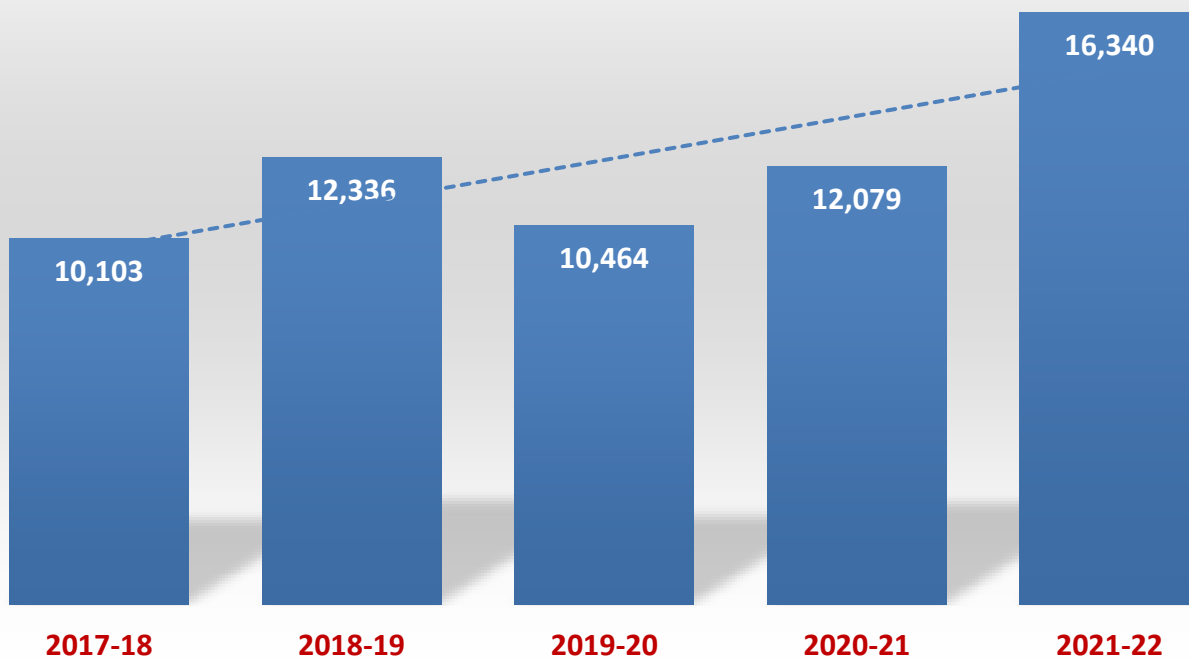


## ST. MATTHEW'S PROJECT

Annual Report of the Trustees  
For the year ended 31 August 2022



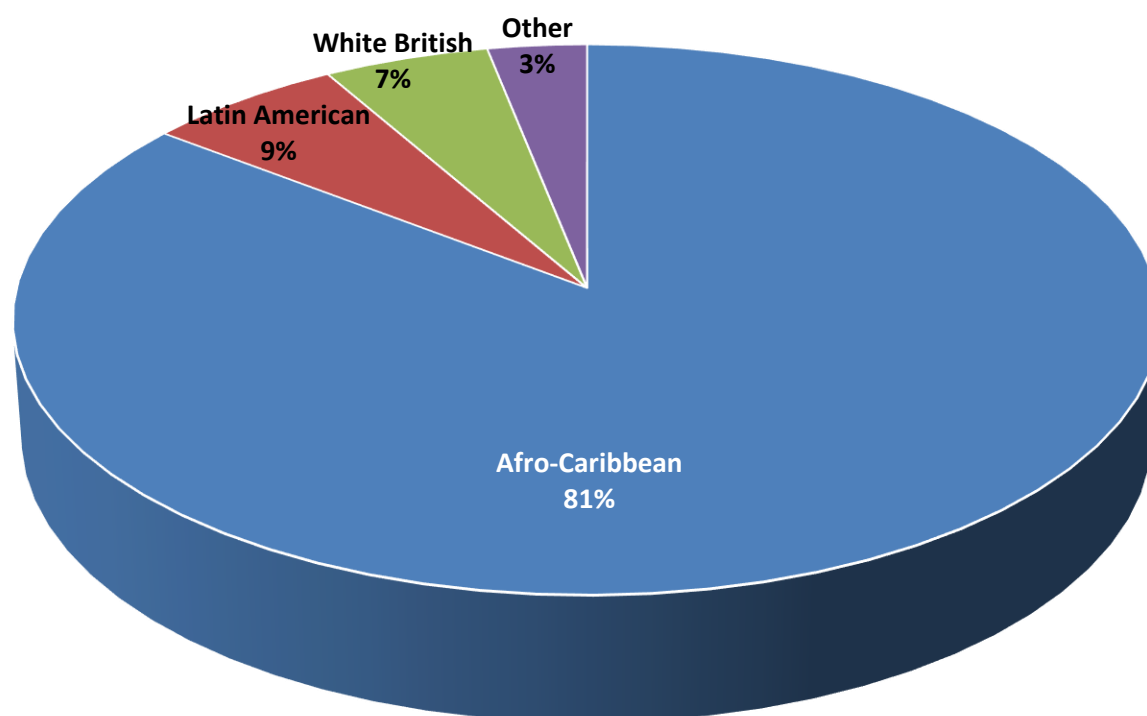
### Total Throughput of Participants (1 September - 31 August)



2019-20: Loss of 12 weeks of activities due to Covid lockdown.  
2020-21: Loss of 16 weeks of activities due to Covid lockdowns.



## ETHNICITY BREAKDOWN







## **SMP PROGRAMME 2021-22**

- **Girls-only Saturday Football Club**
- **Girls-only Roupell Park Estate Football Club**
- **Girls' Secondary School Leagues & Tournaments**
- **5-16s Saturday Football Club**
- **Summer and Half-Term Holiday Football & Food Scheme**
- **Tulse Hill Estate Christmas Pen Football Tournament**
- **St. Matthew's Estate After-School Sports Club**
- **St. Matthew's F.C (U10s, U11s, U12s, U13s, U14s, U15s, 16s Girls U16s and Seniors A & B)**
- **Volunteer programme**
- **F.A Level-1 Coaching Course**
- **F.A Level-2 Coaching Course**
- **Cage Football -Tulse Hill Estate**
- **Parent & Toddler Club**
- **Elders' Football Programme**
- **Fit 4 Life - mental health wellbeing programme**
- **Trauma-Informed Staff Training**
- **Young Tulse Hill Peer Researchers**
- **City Heights Academy Schools' Partnership**
- **Monthly online £100 quiz prizes**
- **Family Fitness Club**



## HIGHLIGHTS OF THE YEAR

### AUTUMN

SMP were proud to have once again managed both the male and female Lambeth football squads for the 2021 London Youth Games. There were difficult circumstances in terms of recruitment and training due to lockdowns and delays, so a huge well done to our lead coaches, Megan and Dwight, for all their hard work in achieving a Plate victory for the girls and a Bronze medal for the boys.



## ST. MATTHEW'S PROJECT

### Annual Report of the Trustees For the year ended 31 August 2022



A short new film about the SMP in two parts, entitled '*This is Us!*' was produced by Cinergic Media to showcase what we do: [https://m.youtube.com/watch?v=aCwQmu\\_sGrc&feature=youtu.be](https://m.youtube.com/watch?v=aCwQmu_sGrc&feature=youtu.be)

Another busy half-term holiday programme in October saw a total throughput of 250 young people access free football and meals over 3 sessions in Brockwell Park, with an average attendance of 83 participants. Great to have our old friend 'PC Ray' (now DS) don his old uniform and pop down too and join in the fun too – playing in goal, getting soaked, ruining his uniform and handing out meals.



The latest SMFC U10s team for the 2021-22 season got their first taste of playing under floodlights at Ferndale Sports Centre, Brixton. SMP first started using the venue in the winter of 2005 and in the 16 years since, 100s of young people have been able to access structured midweek football and coaching sessions throughout the winter months.



## ST. MATTHEW'S PROJECT

Annual Report of the Trustees  
For the year ended 31 August 2022



### On the road...

- Project Coordinator, Dwight Barnett, and two SMP reps were invited to attend a special London Youth event, celebrating young Londoners' achievements...
- SMFC U15s had the great experience during the half-term holiday of playing in Crystal Palace FC's training ground dome in Beckenham...
- And SMFC U12s out in Croydon for an away league match bumped into Stormzy, who kindly posed for a photo...



## ST. MATTHEW'S PROJECT

Annual Report of the Trustees  
For the year ended 31 August 2022

---



A great evening of 5-a-side took football place at the Shoreditch Powerleague venue as some of our SMP coaches took on representatives from our great supporters, Peters & Peters Solicitors. A massive thank you to all at P&P.



## ST. MATTHEW'S PROJECT

Annual Report of the Trustees  
For the year ended 31 August 2022



November witnessed a great turnout for our first session in the Crystal Palace Sports Centre dome at our Elders' Football programme. Players had access to the facility until the end of the year. As part of the programme, this season saw the creation of a new SMFC Seniors B team, which means we had 50 players registered with the Southern Sunday Football League, many of them former SMFC youth players. All members of the programme also enjoyed free access to the new FA Introduction to Coaching Football and the UEFA C Licence courses, plus a direct referral pathway to our partners Bounceback for CSCS Card and work-ready courses.



On the cultural front, 6 of our Girls-Only club members got to see Hamlet thanks to free tickets from the Young Vic Theatre.

## ST. MATTHEW'S PROJECT

Annual Report of the Trustees  
For the year ended 31 August 2022

---



### WINTER

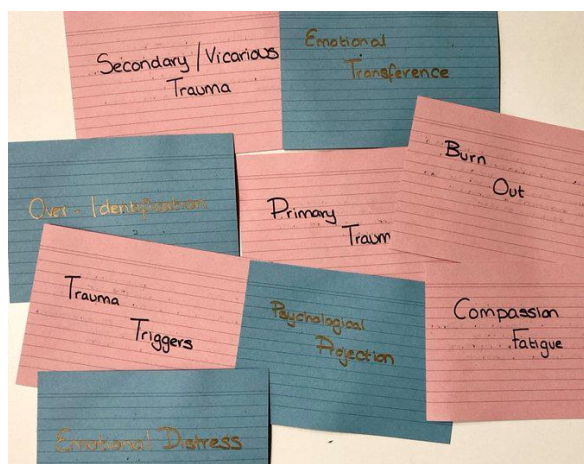
December saw the start of our second round of trauma-informed staff training. The training was delivered by Whitney Iles and Project 507 and is designed to help staff better understand what they are dealing with in their day-to-day activities with SMP participants. *'Trauma-informed'* might be on trend of late but getting us all to look back and ahead on how we deal with young people through the prism of trauma is a genuine asset. Huge thank you to Jubilee Primary School, Tulse Hill for the free use of facilities.





## ST. MATTHEW'S PROJECT

Annual Report of the Trustees  
For the year ended 31 August 2022



Project Coordinator, Dwight Barnett, met up with Gavin English, the Alleyns School Director of Sport meets to discuss future opportunities. Alleyn's also kindly set up a second-hand football boot donation scheme for SMP.



Members of the SMP's Girls-Only Club enjoyed a day out at Fulham FC's training ground in Motspur Park, Surrey. A big thank you to Fulham FC Foundation for the opportunity.



## ST. MATTHEW'S PROJECT

Annual Report of the Trustees  
For the year ended 31 August 2022



The inaugural meeting of the SMP Youth Board was held in the amazing city viewing room at City Heights Academy, Tulsa Hill. Project Coordinator, Dwight, had been working on this idea for a while and it was great to finally see things come together. The Youth Board will give young people at the heart of SMP a genuine voice and help shape what we do in the future.





## ST. MATTHEW'S PROJECT

### Annual Report of the Trustees For the year ended 31 August 2022

---



There was a fantastic turnout at our Girls-Only Club to bid farewell to former participant and coach, Naomi, who was off to live in the USA for a while. After the regular Saturday session at Ferndale Sports Centre, it was a short walk to Brixton Nando's for a special send-off and end-of-year treat for our girls.

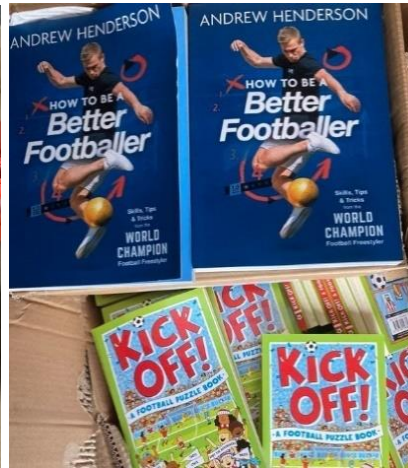


Glad tidings this Christmas saw our Saturday Club 'Tinies' very pleased with their new size 3 footballs, courtesy of Adidas Football. We also received 100 free rides for George Irwin's Funfair at Clapham Common, football-related books from O'Mara Books, chocolate gifts for our Christmas Cage Football event from our sponsor, Martin D'Costa, and some brand-new football boots for some of our younger members courtesy of one of our Twitter followers. Many thanks to everyone for all the freebies!



## ST. MATTHEW'S PROJECT

Annual Report of the Trustees  
For the year ended 31 August 2022





## ST. MATTHEW'S PROJECT

### Annual Report of the Trustees For the year ended 31 August 2022



It was a great end to 2021 at our Saturday Club in Brockwell Park too, with children, parents and carers enjoying the Christmas celebrations and goodies, including mince pies, mulled wine and free football boots and balls. We also delivered over 100 Take & Make vegetarian recipe boxes and crates of fresh fruit. And our '*lucky dip*' raffle winner went off with a lovely festive hamper!



Wet and windy weather at our Christmas Cage Football event on Tulse Hill Estate did not dampen the mood of our participants either. All in all, a very happy Christmas...



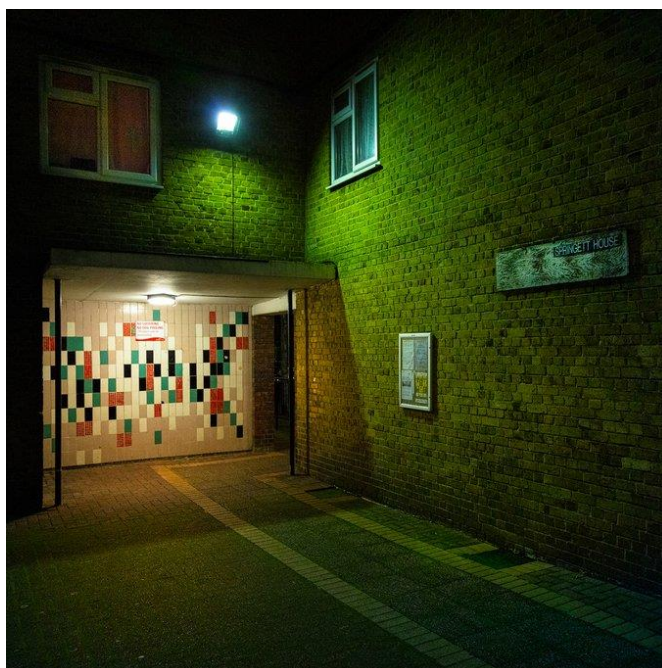
## ST. MATTHEW'S PROJECT

### Annual Report of the Trustees For the year ended 31 August 2022

---

Work of local photographer and SMFC U12s parent, Ellie Laycock, featured in the Town Hall Art Programme. Ellie's project – '*Spectemur Agendo*' – was her first major public art commission and went on display in Lambeth Town Hall. The exhibition features portraits of SMFC coaches and U12 players. Ellie's photo of a player (see below) was also shortlisted for the Portrait of Britain 2021.

*(Springett House, St. Matthew's Estate, Brixton, birthplace of the SMP)*



An extension of our girls-only provision saw a new midweek session for 11-16 year-olds at the new MUGA site on Roupell Park Estate, Upper Tulse Hill in partnership with the Roupell Park Estate Management Team and the Fulham F.C Foundation.



## ST. MATTHEW'S PROJECT

Annual Report of the Trustees  
For the year ended 31 August 2022



Another well-attended Half-Term Programme in February saw an average of 70 young people turning out at two sessions despite the cold and wet weather. Unfortunately, the third session had to be cancelled due to the London area having been placed on a Red Weather Warning down to Storm Eunice. It was great to have our Youth Board members helping out at the sessions, distributing meals and getting feedback from participants, and to have PC Joe Shaw from Met Police joining in the fun too and helping to build relationships with local young people.



## ST. MATTHEW'S PROJECT

### Annual Report of the Trustees For the year ended 31 August 2022



Very proud of and grateful to our artist, Bethany, for our new logo which went on show at our bowling green pavilion base in Brockwell Park. Bethany was one of our first ever Girls-Only Club players back in 2008, and recently returned to transform an old wooden table into a wonderful SMP sign. Well done, too, to Project Coordinator, Dwight, who came up with the idea and contacted Bethany, completely unaware at the time that she was a former SMP member!



## SPRING

A great workshop with pupils at City Heights Academy, Tulse Hill was delivered in partnership with The Donmar Theatre as part of their community outreach. The 'Top Secret' production focuses on the climate emergency and places young people at its heart, imagining a future in which an older generation is put on trial for their inaction against climate change. Parents be warned!



To help out a little in what proved to be very difficult times for local families, we started monthly online quizzes, giving our members the chance to win a £100 grocery voucher. The lucky winners have a choice between Tesco and Sainsburys. The quizzes were very popular.



### **MONTHLY QUIZ**

Once a month we are giving our members the chance to win a £100 grocery voucher!

The lucky winner will have a choice between Tesco and Sainsburys.

The quiz will be a blend of topics such as football, SMP history and general knowledge.

Some of the questions will be tricky and even Google might not always be able help you out!

Overall though it will be a fun activity in which the whole family can get involved.

[thesmp.net](https://thesmp.net)

A fantastic 118 girls from 11 schools – our highest attendance ever – turned out for our Lambeth Schools Year 8 & 9 tournament at Ferndale Sports Centre, Brixton. It was our first



## ST. MATTHEW'S PROJECT

### Annual Report of the Trustees For the year ended 31 August 2022



schools' tournament since 2019 after the 2020 event was cancelled in the first week of lockdown. Congratulations to Bishop Thomas Grant, Streatham who came out narrow 2-1 winners in the final against La Retraite, Clapham Park – a big well done to them too. Elm Green, West Norwood won the Fair Play Award. And well done to our two Star Player winners from Lambeth Academy, Clapham and Streatham & Clapham High.



SMP along with High Trees Community Trust, Juvenis, Spiral Skills, IRMO and MLCE were selected as one of the Delivery Partners on the Lambeth Peer Action Collective project, leading the London region. The aim is to recruit, train and support 12 Peer Researchers aged between 16-20 to listen to at least 480 young people aged 10-16 across Lambeth. The research collected from this project will be collated and presented to provide both partner organisations and stakeholders with insights to inform service delivery and policy. Great to have Saturday Club coach, Sabrina, plus 4 other SMP coaches as PRs!



## ST. MATTHEW'S PROJECT

### Annual Report of the Trustees For the year ended 31 August 2022



SMFC U14s were proud winners in April of the inaugural '*Paul Smithers Shield*' tournament, hosted by our partners, Tooting & Mitcham United FC, in memory of the much-missed Fulham FC Foundation coach. A special day and a fitting tribute to Paul who was a great supporter of SMP and Lambeth in general.



The SMP Easter Holiday staff team in Brockwell Park this year consisted of 15 coaches, 11 of whom were former participants, and with an average age of 21. Their average age when first attending SMP activities was 9.





## ST. MATTHEW'S PROJECT

### Annual Report of the Trustees For the year ended 31 August 2022



The Easter Holiday scheme itself saw an unusually quiet first week due to bad weather, disjointed school break-up times and Ramadan, but another 700-plus free meals, 100 Take & Make boxes and numerous pairs of second-hand football boots were still handed out.



A shining example of commitment and dedication, SMFC U15s player, Tashane, cycled from Brixton to Kingston Vale for a 10.00 KO, played 2 double-banker matches then stopped off at Wandsworth Common on the way home to support the U12s! His reward was 3 tickets for the West Ham v Everton match at the London Stadium, kindly donated on the Sunday morning.



## ST. MATTHEW'S PROJECT

### Annual Report of the Trustees For the year ended 31 August 2022

Project Coordinator, Dwight Barnett, worked closely throughout the school year with City Heights Academy, Tulse Hill, building up strong links with both staff and pupils, many of whom attend SMP sessions. A regular visitor to the school, he is now an official ambassador and mentor. He also helped facilitate our partnership with the school and Partisan CIC in the latest chapter of our Fit 4 Life mental well-being programme. April saw the first session held in Brockwell Park, taking advantage of the nice Spring weather. It's good to talk!



We received some fantastic new tops for our Youth Board members courtesy of James Gregory at Streetgames. If you're going to tell adults where they're going wrong, you need to look the part. A big thank you, too, to City Heights Academy for the free facilities.





## ST. MATTHEW'S PROJECT

### Annual Report of the Trustees For the year ended 31 August 2022



May saw the start of the SMP Family Fitness Club, a weekly programme of fitness sessions for parents and their children aged 5-10. The sessions were run in conjunction with a personal trainer from Dulwich Hamlet FC. As well as encouraging families to improve their fitness levels, these sessions sought to foster better parent-child relationships and provide some fun-filled workouts.



A special Saturday Club took place in May as we remembered former SMP participant and SMFC player, John Ogunjobi. As well as the usual activities, the 111 participants who attended enjoyed free meals, Star Player awards and lucky raffle prizes. The day was to celebrate what would have been John's birthday on the 30th, at the request of John's mum. A specially designed portrait was also given to John's mum to mark the occasion.



## ST. MATTHEW'S PROJECT

### Annual Report of the Trustees For the year ended 31 August 2022



A lucky group of SMP members and parents and guardians got to enjoy the May sunshine and a lovely day out at Wembley Stadium for the FA Cup Final between Chelsea and Liverpool. Great memories and thoroughly enjoyed by all.



## SUMMER

Summer got off to a great start and a weekend of celebrations, with SMFC U15s winning the London County Saturday Youth Football League Cup on the first Saturday of June, and over 100 players taking part in our Jason K Memorial tournament on the Sunday. The U15s came away 2-0 winners against Escalate F.C at Barn Elms Sports Centre, Barnes, and 11 teams took part in the Jason K 6-a-side event at Tooting & Mitcham United FC. The Jason K winners, Tabard, and runners-up, SMFC Seniors B, were also managed respectively by SMFC coaches Marcus and Mario. Great to see so many old faces too, many of whom we've known since primary school.





## ST. MATTHEW'S PROJECT

Annual Report of the Trustees  
For the year ended 31 August 2022

---



A total of 77 girls from 8 schools across Lambeth took part in our second Lambeth Girls' Schools tournament of the year at Ferndale Sports Centre, Brixton. The winners were La Retraite, Clapham Park, runners-up Harris Academy, Clapham, with the Fair Play Trophy going to Lambeth Academy, also Clapham!



Another day of celebrations saw the SMFC end-of-season awards ceremony take place at Jubilee Primary School, a big thank you to them for the venue. Great to have former

## ST. MATTHEW'S PROJECT

### Annual Report of the Trustees For the year ended 31 August 2022



participant, player, volunteer, coach and now Project Coordinator, Dwight, handing out the awards to a whole new generation of players.



SMFC U15s also got to go to Brixton Nando's to celebrate their London County Saturday League Cup win.





## ST. MATTHEW'S PROJECT

### Annual Report of the Trustees For the year ended 31 August 2022

SMP were honoured to be once again managing the Lambeth Girls' London Youth Games squad at Gunnersbury Park, Ealing. There was tough competition with 25 boroughs represented but the girls managed to top their group and beat Merton 2-1 in the quarterfinals. In the semis, though, their run came to an end with a narrow 1-0 defeat to next door neighbours Wandsworth. The girls came away with a third-place Bronze medal and the LYG Respect award. Well done girls! Haringey beat Wandsworth in the final to be crowned champions.

LYG Group stage:

- 1 Lambeth
- 2 Islington
- 3 Bexley
- 4 Havering
- 5 Kingston
- 6 Hammersmith & Fulham



After a 3-year absence it was great to back running the Jubilee Primary School Summer Fair football tournament...



## ST. MATTHEW'S PROJECT

### Annual Report of the Trustees For the year ended 31 August 2022



...And the walled garden in Brockwell Park provided a beautiful setting for our last Fit 4 Life session of term with pupils from City Heights Academy. Extremely important to maintain community links with our local schools.



New coaches' handbooks were handed out at the first SMFC managers' pre-season meeting in Brockwell Park. Big shout out to our partners and website hosts, Effra Digital, for producing the books. The books contain the new coaching philosophy created by Project Coordinator, Dwight, which will help ensure a uniform approach to coaching across all SMP and SMFC sessions, from the Saturday Club to the SMFC Seniors' teams.





## ST. MATTHEW'S PROJECT

### Annual Report of the Trustees For the year ended 31 August 2022



It was great to welcome some special visitors to Brockwell Park during our summer holiday programme, all the way from the USA. We first welcomed the Montgomery Stars and Barber Elite Soccer from Alabama, followed by Fremont FC from California – who took the famous SMFC black & blue stripes back across the Atlantic with them!





## ST. MATTHEW'S PROJECT

Annual Report of the Trustees  
For the year ended 31 August 2022



Congratulations and a huge well done went out to all our summer holiday Star Player Award recipients. Awards were based on outstanding effort, enthusiasm and commitment. The huge numbers of young people attending this summer make this an even bigger achievement than usual.





## ST. MATTHEW'S PROJECT

Annual Report of the Trustees  
For the year ended 31 August 2022



More memories from the SMP Summer Holiday Scheme in Brockwell Park...





## ST. MATTHEW'S PROJECT

### Annual Report of the Trustees For the year ended 31 August 2022



Lovely to have visits from local MPs Bell Ribeiro-Addy and Helen Hayes, who came down to see the holiday scheme in action...





## ST. MATTHEW'S PROJECT

### Annual Report of the Trustees For the year ended 31 August 2022



Another visitor from America to Brockwell Park during the summer holidays was the New York Times bestselling author Jason Reynolds, who popped down to give some of our young people an inspirational talk.





## ST. MATTHEW'S PROJECT

### Annual Report of the Trustees For the year ended 31 August 2022

---



And finally... we saw out the summer with SMP's first ever daytrip to the seaside. 45 family members went down to Brighton for the day by luxury coach and enjoyed a day out on the beach, with free all-inclusive wristbands for the Palace Pier!



## ST. MATTHEW'S PROJECT

Annual Report of the Trustees  
For the year ended 31 August 2022



### ST MATTHEWS PROJECT

## SUMMER 2022 STATS



**2,453**

Total throughput  
of young people

**491**

Average weekly  
attendance

**98**

Average daily  
attendance



**81**

Lowest  
attendance



**132**

Highest  
attendance



**3,160**

Meals



**300**

Take & Make  
recipe boxes



**160**

Smoothies



**41**

Boots



**8**

Star players



**3**

USA soccer  
teams hosted



**1**

USA authors  
visiting

THE ST MATTHEWS PROJECT - MORE THAN A FOOTBALL CLUB



## ST. MATTHEW'S PROJECT



### Annual Report of the Trustees For the year ended 31 August 2022

---

#### What's next for St. Matthew's?

As SMP continues to expand to meet the needs of local young people and their families, we will make sure that we put sustainability at the heart of everything we do. We want to grow the project incrementally, and ensure that we have a diverse and robust funding model to maintain and develop our services in the future. Our relationships with the local community are our greatest asset and we will continue to develop them, investing in the wide pool of local talent through our training and development programmes. As we seek to move SMP up to the next level, we will not move away from what we do best – delivering high quality frontline, grass-roots, trauma-informed work with children and young people, free at the point of access.





## ST. MATTHEW'S PROJECT

Annual Report of the Trustees  
For the year ended 31 August 2022

---

*'St. Matthew's means a lot to me. At first I never really was into football, and then I went to Brockwell Park and I just got into it and now I'm really good at it and I love it.'* – Romeo, aged 12.

'It's a very open project and they do football for everyone, even if you're not in a team. I love St. Matthew's, I've been here since I was young so it really means a lot to me.' – CJ, aged 14.

'St. Matthew's Project is an excellent club that offers free football that no other club, as far as I'm aware of, in the area provides. My two sons started their football career with SMP and now they are academy players due to the coaching they received. The staff are amazing and always safeguard the children. They also give out free food and household essentials for families and free lunch during the half term. I will always support them. Keep up the good work!' – Parent

'St. Matthew's is a great organisation to be involved in. Since my son started playing here several years ago I have found it to be a very welcoming and nurturing environment. It has offered my son the opportunity to bond with his teammates over a number of years and foster new friendships. He is also maturing in a safe and friendly environment which promotes positive values. St. Matthew's is a great place for children to grow and develop.' – Parent

'SMP are a fantastic organisation! As a family we have been a part of them for 6 years now, and counting. I have 2 sons who play for them and I honestly cannot thank them enough. They have given my sons a focus, a direction and a motivation to strive for. As a team they really bring out the best in all of the children, mentoring them as well as coaching them. I can say that I am truly thankful and blessed to have come across SMP, and for my children to be a part of such a wonderful organisation, and to be guided and supported by such an incredible team of coaches.' – Parent

'The St. Matthew's Project has been doing amazing work bringing our young people together through football and other activities for the best part of twenty years. During this whole time, they've stayed absolutely rooted in our community and true to their principles. It's hard to overstate the amount of hard work and care that goes into running these sessions. I'm so grateful to them for their relentless focus on seeing the potential in all our young people and helping them to fulfil it.' – Bell Ribeiro, MP for Streatham.



## ST. MATTHEW'S PROJECT

Annual Report of the Trustees  
For the year ended 31 August 2022



### Our people and supporters

We'd like to thank everyone who has been involved in supporting the work of SMP; it could never happen without the support of our funders and partners. We would also like to extend our huge thanks for the continued support of our board of trustees, our staff and volunteers. This review is a celebration of the efforts and commitment of our staff, trustees, partners, volunteers and participants. We have built a team with a shared vision and together we are making a positive difference. Our staff, volunteers and trustees are the key to our growth and success; they are involved and engaged not just with us but with all the young people we support. We would like to thank them for the time and invaluable resources they are putting into our work, helping to make the SMP the special organisation it is – may their effort and dedication continue to help change the lives of young people in the Tulse Hill and Brixton area and beyond. Any success we've had is about the people, the volunteers and everybody involved in supporting SMP on a daily, weekly basis.

# ST. MATTHEW'S PROJECT



## Annual Report of the Trustees For the year ended 31 August 2022

### Financial Review

Funding for the Charity comes from a variety of sources including grants and donations from trusts and individuals.

2021/22 was another very strong year for donations and legacies with income of £343,124 (2021: £202,705), a significant increase on 2021. Since the end of the year income flow has remained at that level. However, more work still needs to be done on understanding where SMP's future funding pipeline will be coming from and the degree of certainty. Overall, the financial position of SMP has remained strong with significant Cash and Reserves. The Trustees view is that SMP is now in a position to plan to broaden its activities and reach to further the Charity's aims.

### Financial Activity and Financial Position

The Statement of Financial Activities and Balance Sheet can be found on pages 51 and 52 respectively. The Charity's total funds increased by £95,743 during the year (2021: increased by £19,064). The balance sheet shows total net assets of £287,000 (2021: £191,257).

Included in total funds are amounts totalling £182,029 (2021: £123,883) which are restricted. These monies have either been raised for, and their use restricted to, specific purposes, and/or they comprise grants subject to grantor imposed conditions. Details of the movement on these restricted funds can be found in note 7 to the accounts together with an analysis of movements in the year.

### Reserves Policy

The Trustees have examined the requirements for free reserves, i.e. those unrestricted funds not invested in tangible fixed assets. The Trustees consider that, given the nature of the Charity's funding, free reserves should be equivalent to approximately 3 months general fund expenditure, plus committed future expenditure on other projects, where funds permit. The Trustees are of the opinion that this provides sufficient flexibility to cover temporary shortfalls in incoming resources and will allow the Charity to cope and respond to unforeseen emergencies whilst specific action plans are implemented. At 31 August 2022 the Charity had net free reserves of £104,971 (2021: £67,374) as follows:

	2022 £	2021 £
<b>Total reserves</b>	<b>287,000</b>	<b>191,257</b>
Less: restricted funds	(182,029)	(123,883)
<b>Free reserves</b>	<b>104,971</b>	<b>67,374</b>
<b>Free reserves requirement:</b>		
3 month's budgeted routine expenditure	50,000	45,000
Anticipated spend on expanding activities	50,000	-
<b>Free reserves requirement</b>	<b>100,000</b>	<b>45,000</b>

### Going Concern

After making appropriate enquiries, the trustees have a reasonable expectation that the charitable company has adequate resources to continue in operational existence for the foreseeable future. For this reason, they continue to adopt the going concern basis in preparing the financial statements. Further details regarding the adoption of the going concern basis can be found in the Accounting Policies.



# ST. MATTHEW'S PROJECT



## Annual Report of the Trustees For the year ended 31 August 2022

---

### Responsibilities of Trustees for the Financial Statements

The Trustees are responsible for preparing the report and the financial statements in accordance with applicable law and United Kingdom Generally Accepted Accounting Practice. Charity law in England and Wales requires the Trustees to prepare financial statements for each financial period which give a true and fair view of the state of affairs of the Charity and of the incoming resources and application of resources of the Charity for that period.

In preparing those financial statements, the Trustees are required to:

- select suitable accounting policies and apply them consistently;
- observe the methods and principles of the Charities SORP;
- make judgements and estimates that are reasonable and prudent;
- state whether applicable accounting standards have been followed, subject to any departures disclosed and explained in the financial statements; and
- prepare the financial statements on the going concern basis unless it is inappropriate to presume that the activities of the Charity will continue.

The Trustees are responsible for keeping adequate accounting records which disclose with reasonable accuracy at any time the financial position of the Charity and enables them to ensure that the financial statements comply with the Charities Act 2011, the Charity (Accounts and Reports) Regulations 2008 and the provisions of the governing document. The Trustees are also responsible for safeguarding the assets of the Charity and hence for taking reasonable steps for the prevention and detection of fraud and other irregularities. The Trustees are responsible for the maintenance and integrity of the Charity and financial information included in the Charity's website.

### Approval

The report of the Trustees was approved by the Trustees on 22 May 2023 and signed on their behalf by:

**Jenny Greenfield**  
**Chair of the Board**

# ST. MATTHEW'S PROJECT



## Report of the Independent Examiner to the Trustees of St Matthews Project For the year ended 31 August 2022

---

I report on the accounts of the St Matthew's Project (the Charity) for the year ended 31 August 2022, set out on pages 51-56.

### Respective responsibilities of trustees and examiner

The trustees (who are also the directors of the company for the purposes of company law) are responsible for the preparation of the accounts. The trustees consider that an audit is not required for this year under section 144(2) of the Charities Act 2011 ("the 2011 Act") and that an independent examination is needed. The charity is required by company law to prepare accrued accounts and I am qualified to undertake the examination by being a qualified member of the Institute of Chartered Accountants in England and Wales.

Having satisfied myself that the charity is not subject to audit under company law and is eligible for independent examination, it is my responsibility to:

- examine the accounts under section 145 of the 2011 Act;
- to follow the procedures laid down in the general Directions given by the Charity Commission under section 145(5)(b) of the 2011 Act; and
- to state whether particular matters have come to my attention.

### Basis of independent examiner's report

My examination was carried out in accordance with the general Directions given by the Charity Commission. An examination includes a review of the accounting records kept by the charity and a comparison of the accounts presented with those records. It also includes consideration of any unusual items or disclosures in the accounts, and seeking explanations from you as trustees concerning any such matters. The procedures undertaken do not provide all the evidence that would be required in an audit and consequently no opinion is given as to whether the accounts present a 'true and fair view' and the report is limited to those matters set out in the statement below.

### Independent examiner's statement

I have completed my examination. I confirm that no matters have come to my attention in connection with the examination giving me cause to believe:

1. accounting records were not kept in respect of the Company as required by section 386 of the 2006 Act; or
2. the accounts do not accord with those records; or
3. the accounts do not comply with the accounting requirements of section 396 of the 2006 Act other than any requirement that the accounts give a 'true and fair view which is not a matter considered as part of an independent examination; or
4. the accounts have not been prepared in accordance with the methods and principles of the Statement of Recommended Practice for accounting and reporting by charities.

I have no concerns and have come across no other matters in connection with the examination to which attention should be drawn in this report in order to enable a proper understanding of the accounts to be reached.

**Christine Cheung-Poston ACCA**  
22 May 2023



# ST. MATTHEW'S PROJECT



## Statement of Financial Activities (incorporating the income and expenditure account) For the year ended 31 August 2022

	Note	Unrestricted Funds 2022 £	Restricted Funds 2022 £	Total 2022 £	Unrestricted Funds 2021 £	Restricted Funds 2021 £	Total 2021 £
<b>Income from:</b>	2						
Donations and legacies		99,011	272,558	371,569	65,876	136,338	202,214
Charitable activities		1,555	-	1,555	-	-	-
<b>Total Income</b>		<b>100,566</b>	<b>272,558</b>	<b>373,124</b>	<b>65,876</b>	<b>136,338</b>	<b>202,214</b>
<b>Expenditure on:</b>							
Marketing/advertising		1,473	-	1,473	-	-	-
Staff costs	3a	50,584	46,376	96,960	45,054	43,880	88,934
Staff expenses		-	3,953	3,953	-	2,929	2,929
Service delivery	3b	-	164,083	164,083	-	76,320	76,320
Office, administration & support	3c	10,662	-	10,662	14,717	-	14,717
Independent examination		250	-	250	250	-	250
		<b>62,969</b>	<b>214,412</b>	<b>277,381</b>	<b>60,021</b>	<b>123,129</b>	<b>183,150</b>
<b>Net /income before tax</b>		<b>37,597</b>	<b>58,146</b>	<b>95,743</b>	<b>5,855</b>	<b>13,209</b>	<b>19,064</b>
Tax payable	4	-	-	-	-	-	-
<b>Net income after tax</b>		<b>37,597</b>	<b>58,146</b>	<b>95,743</b>	<b>5,855</b>	<b>13,209</b>	<b>19,064</b>
Transfers between funds		-	-	-	-	-	-
Other recognised gains/(losses)		-	-	-	-	-	-
<b>Net movement in funds</b>		<b>37,597</b>	<b>58,146</b>	<b>95,743</b>	<b>5,855</b>	<b>13,209</b>	<b>19,064</b>
Total funds brought forward		67,374	123,883	191,257	61,519	110,674	172,193
<b>Total funds carried forward</b>		<b>104,971</b>	<b>182,029</b>	<b>287,000</b>	<b>67,374</b>	<b>123,883</b>	<b>191,257</b>

# ST. MATTHEW'S PROJECT



## Balance Sheet As at 31 August 2022

	Note	Unrestricted Funds 2022 £	Restricted Funds 2022 £	Total 2022 £	Total 2021 £
<b>Current Assets</b>					
Debtors	5	30,000	-	30,000	9,995
Cash At Bank And In Hand		76,912	182,029	258,941	183,204
		106,912	182,029	288,941	193,199
<b>Creditors - Amounts Falling Due Within One Year</b>	6	1,941	-	1,941	1,942
<b>Net Current Assets</b>		<b>104,971</b>	<b>182,029</b>	<b>287,000</b>	<b>191,257</b>
<b>Net Assets</b>		<b>104,971</b>	<b>182,029</b>	<b>287,000</b>	<b>191,257</b>
<b>Represented By:</b>					
Restricted Funds	7	-	182,029	182,029	123,883
Unrestricted Income Funds		104,971	-	104,971	67,374
<b>Total Funds</b>		<b>104,971</b>	<b>182,029</b>	<b>287,000</b>	<b>191,257</b>

These accounts have been prepared in accordance with the provisions applicable to companies subject to the small companies regime as set out in Part 15 of the Companies Act 2006. The company is entitled to exemption from audit under section 477 of the Companies Act 2006 for the year ended 31 August 2022 and no notice requiring an audit has been deposited under section 476.

The Trustees acknowledge their responsibilities for:

- ensuring that the company keeps accounting records which comply with section 386 of the Companies Act 2006
- preparing financial statements which give a true and fair view of the state of affairs of the company as at the end of each financial period and of its profit or loss for the financial period in accordance with the requirements of sections 394 and 395 and which otherwise comply with the requirements of the Companies Act 2006 relating to financial statements, so far as is applicable to the company.

The financial statements were approved by the Trustees on 22 May 2023 and signed on their behalf by:

*David Keen*

**David Keen**  
Treasurer

Company registration 7007350



# ST. MATTHEW'S PROJECT



## Notes to the Financial Statements For the year ended 31 August 2022

---

### **I. Accounting Policies**

St. Matthews Project is a charitable company limited by guarantee without share capital, with use of 'Limited' exemption, and registered in England with registration number 07007350. Its registered office address is 90 Gaskarth Road, Balham, London, SW12 9NW. The accounts are presented in GBP rounded to £1.

The principal accounting policies adopted, judgements and key sources of estimation uncertainty in the preparation of the financial statements are as follows:

#### **Basis of accounting**

The financial statements have been prepared in accordance with Accounting and Reporting by Charities: Statement of Recommended Practice applicable to charities preparing their accounts in accordance with the Financial Reporting Standard applicable in the UK and Republic of Ireland (FRS 102) (effective 1 September 2021) - (Charities SORP (FRS 102)), the Financial Reporting Standard applicable in the UK and Republic of Ireland (FRS 102) and the Companies Act 2006. The financial statements have been prepared on a natural or alternative basis of analysis as per SORP 4.6.

The Charity meets the definition of a public benefit entity under FRS 102.

The Charity has availed itself of the Companies Act 2006 and adapted the Companies Act format to reflect the special nature of the Charity's activities.

#### **Going Concern**

The Charity is a going concern. Taking into account reserves and anticipated recurring income, the Trustees are confident that the Charity remains a going concern for at least twelve months from the date of approval of these accounts.

#### **Income recognition**

Voluntary income and donations (including legacies) are accounted for once the Charity has entitlement to the income, it is probable the income will be received and the amount of income receivable can be reliably measured. Income from the recovery of tax on gift aided donations is accounted for in the period to which the relevant donation is received. Grant income is recognised on a receivable basis.

Interest on funds held on deposit is included when receivable and the amount can be measured reliably by the Charity; this is normally upon notification of the interest paid or payable by the bank.

No amounts have been included in the financial statements for services donated by volunteers.

#### **Expenditure recognition**

Expenditure is accrued as soon as a liability is considered probable, and the amount of obligation can be measured reliably. Longer term liabilities are discounted to present value. The Charity is not registered for VAT and accordingly expenditure includes VAT where appropriate.

Charitable expenditure includes those costs in fulfilling the Charity's principal objects, as outlined in the Report of the Trustees. These include governance costs which are incurred in connection with the administration of the Charity and compliance with constitutional and statutory requirements, which tasks are undertaken mainly by the Trustees. Governance costs also include costs relating to statutory independent examination and legal fees.

#### **Taxation**

The Company is a Registered Charity and is therefore exempt from taxation under the Income and Corporation Taxes Acts.

# ST. MATTHEW'S PROJECT



## Notes to the Financial Statements For the year ended 31 August 2022

### 1. Accounting Policies (continued)

#### Tangible fixed assets

All assets costing more than £2,000 are capitalised.

Tangible fixed assets are stated at cost less depreciation. Depreciation is provided at rates calculated to write off the cost of fixed assets, less their estimated residual value, over their expected useful lives on the following bases:

Office equipment: 5 years

#### Funds Structure

Unrestricted income comprises those funds which are available for use at the discretion of the Trustees in furtherance of the general objectives of the Charity and which have not been designated for other purposes.

Restricted funds are funds which are to be used in accordance with specific restrictions imposed by donors or which have been raised by the Charity for specific purposes. There are currently no restricted funds.

### 2. Income

	Unrestricted Funds 2022 £	Restricted Funds 2022 £	Total 2022 £	Total 2021 £
Donations & legacies				
Donations	24,646	-	24,646	32,292
Gift Aid	-	-	-	-
Grants	74,365	272,558	346,923	169,922
	<u>99,011</u>	<u>272,558</u>	<u>371,569</u>	<u>202,214</u>
Charitable activities				
Team subscriptions	1,555	-	1,555	-
	<u>1,555</u>	<u>0</u>	<u>1,555</u>	<u>0</u>
	<u><b>100,566</b></u>	<u><b>272,558</b></u>	<u><b>373,124</b></u>	<u><b>202,214</b></u>

Income from Grants includes an amount of £30,000 which was receivable as at 31<sup>st</sup> August 2022 (see note 5, debtors).

### 3. Expenditure

Included within expenditure the following costs:

#### 3a Staff costs

	Unrestricted Funds 2022 £	Restricted Funds 2022 £	Total 2022 £	Total 2021 £
Gross salaries	45,927	45,001	90,928	84,226
Employers National Insurance	4,035	212	4,247	2,743
Employer pension contributions	622	1,163	1,785	1,965
	<u><b>50,584</b></u>	<u><b>46,376</b></u>	<u><b>96,960</b></u>	<u><b>88,934</b></u>

The average number of employees during the year was 3 (2021: 3). No employee received emoluments in excess of £60,000 during the year.



# ST. MATTHEW'S PROJECT



## Notes to the Financial Statements For the year ended 31 August 2022

### 3. Expenditure (continued)

#### 3b Service delivery

	Unrestricted Funds 2022 £	Restricted Funds 2022 £	Total 2022 £	Total 2021 £
Coaching, tutoring & training	-	88,360	88,360	45,883
Food	-	41,983	41,983	22,248
Travel	-	3,958	3,958	1,677
Equipment/kit/facilities	-	27,212	27,212	13,008
Membership/league fees	-	1,339	1,339	1,828
Tours & events	-	467	467	(9,995)
Other	-	764	764	1,671
	<b>0</b>	<b>164,083</b>	<b>164,083</b>	<b>76,320</b>

#### 3c Office & administration

	Unrestricted Funds 2022 £	Restricted Funds 2022 £	Total 2022 £	Total 2021 £
Accountancy & payroll	2,107	-	2,107	5,587
Printing & stationery	226	-	226	717
Software	163	-	163	738
Website	5,036	-	5,036	5,130
Other	3,130	-	3,130	2,545
	<b>10,662</b>	<b>0</b>	<b>10,662</b>	<b>14,717</b>

### 4. Taxation

As a charity, St. Matthews Project is exempt from tax on income and gains falling within the provisions of the Corporation Taxes Act 2010 or the Taxation of Chargeable Gains Act 1992 to the extent that these are applied to its charitable objects. No tax charges have arisen on the Charity.

### 5. Debtors

	2022 £	2021 £
Grants receivable	30,000	-
Other debtors	-	9,995
	<b>30,000</b>	<b>9,995</b>

# ST. MATTHEW'S PROJECT



## Notes to the Financial Statements For the year ended 31 August 2022

### 6. Creditors - Amounts Falling Due Within One Year

	2022 £	2021 £
Other creditors	268	391
Other creditors including taxation and social security	373	501
Accruals	1,300	1,050
	<u>1,941</u>	<u>1,942</u>

### 7. Restricted Funds

#### 7a Current year

	At 1 September 2021 £	Income £	Expenditure £	Transfers £	At 31 August 2022 £
Football related activities	<u>123,883</u>	<u>272,557</u>	<u>(214,411)</u>	<u>0</u>	<u>182,029</u>

#### 7b Prior year

	At 1 September 2020 £	Income £	Expenditure £	Transfers £	At 31 August 2021 £
Football related activities	<u>110,674</u>	<u>136,338</u>	<u>(123,129)</u>	<u>0</u>	<u>123,883</u>

**Football related activities.** Income received specifically for funding football related activities.

### 8. Related Party Transactions

No Trustees (2021: none) received reimbursement for expenses incurred on charity business during the year.

The Trustees did not make any restricted donations to the charity during the year (2021: £nil).

### 9. Members Funds

The company is a private company limited by guarantee with no share capital. The liability of the members is limited to £10 in the event of a winding up.