

REGISTERED COMPANY NUMBER: 07353864 (England and Wales)  
REGISTERED CHARITY NUMBER: 1140722

REPORT OF THE TRUSTEES AND  
UNAUDITED FINANCIAL STATEMENTS  
FOR THE YEAR ENDED 31 MARCH 2024  
FOR  
VINE CHRISTIAN CENTRE, BRIDGEND

Graham Paul Limited  
Court House  
Court Road  
Bridgend  
CF31 1BE

VINE CHRISTIAN CENTRE, BRIDGEND

CONTENTS OF THE FINANCIAL STATEMENTS  
FOR THE YEAR ENDED 31 MARCH 2024

---

	Page
Report of the Trustees	1 to 21
Independent Examiner's Report	22
Statement of Financial Activities	23
Balance Sheet	24 to 25
Notes to the Financial Statements	26 to 37
Detailed Statement of Financial Activities	38 to 39

---

## **VINE CHRISTIAN CENTRE, BRIDGEND**

### **REPORT OF THE TRUSTEES FOR THE YEAR ENDED 31 MARCH 2024**

---

The trustees who are also directors of the charity for the purposes of the Companies Act 2006, present their report with the financial statements of the charity for the year ended 31 March 2024. The trustees have adopted the provisions of Accounting and Reporting by Charities: Statement of Recommended Practice applicable to charities preparing their accounts in accordance with the Financial Reporting Standard applicable in the UK and Republic of Ireland (FRS 102) (effective 1 January 2019).

#### **STRUCTURE, GOVERNANCE AND MANAGEMENT**

##### **Governing document**

The charity is controlled by its governing document, a deed of trust, its articles of association, and constitutes a limited company, limited by guarantee, as defined by the Companies Act 2006.

The company is governed by its articles of association as adopted on 21 July 2010, as amended by special resolution registered at Companies House on 2 November 2011 as amended by special resolution(s) dated 12 July 2015

##### **Recruitment and appointment of new trustees**

The trustee board regularly reviews the skill set makeup of the board to ensure that the needs of the charity are adequately catered for.

Trustees are recruited from within the membership of the Vine Christian Centre and must be regular in their attendance and a financial partner with the charity. The Chair would propose to the full trustee body a particular individual and they would be discussed and agreed upon. The Chair would seek to bring the trustee body to a unanimous position, however, if this was not possible, the trustees would vote on the proposed candidate.

#### **REFERENCE AND ADMINISTRATIVE DETAILS**

##### **Registered Company number**

07353864 (England and Wales)

##### **Registered Charity number**

1140722

##### **Registered office**

The Vine Christian Centre  
Australian Centre  
Bridgend, CF31 1LY

##### **Trustees**

Mr A M Ashton  
Mrs A K Hinchey  
Mr L R Hill  
Mrs H E Pettey

The Chief Executive Officer and Chair of the board of trustees is A M Ashton.

##### **Independent Examiner**

Graham Paul Limited  
Court House, Court Road  
Bridgend, CF31 1BE



## Introduction

On behalf of the Church Trustees, I am delighted to introduce our Annual Report for the year April 2023 to March 2024. The first part of the report comprises a legal review and the second part is an overview of Church activity in the year.

As I reflect on the last year the church has started to move forward, has started to see growth and we have seen a new senior leadership team established. There has been growth in Sparklers, Kingdom Kids and Breakthrough Youth. We organised a very fruitful festival into Wildmill and we continue to place an emphasis on mission throughout the church. We have seen many new people come and there is an excitement about what God is going to do amongst us.

As we look ahead, I believe that God has given us a door for effective work that has opened to us. Let us move forward together to see His Kingdom come and His will being done. We have a God who is faithful to the things that He has promised us.



Every blessing

**Pastor Alex Ashton**  
**Chair, Trustees**

## VINE CHRISTIAN CENTRE, BRIDGEND

### REPORT OF THE TRUSTEES CONTINUED FOR THE YEAR ENDED 31 MARCH 2024

---

We are pleased to present the report of the Trustees for the year ended 31<sup>st</sup> March 2024.

#### **Objects of the Vine Christian Centre**

The objects of the Vine Christian Centre are the advancement of the Christian faith in accordance with the statement of faith set out in the schedule to these Articles in particular but not exclusively by the:

- 2.1.1 The provision for and assistance and support of missionaries and Christian workers in Great Britain and throughout the World.
- 2.1.2. Publishing, printing and distribution of the Bible and Christian literature.
- 2.1.3. Establishment of a library of recorded material on Christian subjects and the circulation and distribution of the same.
- 2.1.4. The organisation of Christian meetings, worship, and outreaches.
- 2.1.5. Relief of people in poverty or special need.
- 2.1.6. Furtherance of Christian education by the provision of establishments and facilities for the same.

In setting the objectives and planning the activities the Trustees have given due consideration to general guidance published by the Charity Commission relating to public benefit and believe that they satisfy those requirements.

#### **Governance and internal control**

The Trustees oversee the legal and financial running of the Vine Christian Centre. The spiritual work and life of the Church is overseen by the Pastors, aided by Elders. The Trustees work closely with the Pastors and the staff who run the church office on a day-to-day basis.

The Trustees meet at least three times a year and have regular additional contact through other meetings as necessary. All Trustees attended all meetings in line with the following schedule:

Meeting Date	Pastor A Ashton	Mr L Hill	Mrs H Pettey	Mrs A Hinchey
04.07.23	Y	Y	Y	Y
12.09.23	Y	Y	Y	Y
06.12.23	Y	Y	Y	Y
18.12.23	Y	Y	Y	Y
05.03.24	Y	Y	Y	Y

## Risk

The Trustees take risk seriously and all major insurable risks are subject to normal Churches' and Employers' insurance. All contractual risks are reviewed before being entered into, to ensure that they could not significantly impact upon the ability to fulfil the objectives.

Appropriate professional reviews of the building structure, condition, and compliance with relevant legislation, have been undertaken in the recent past, and the Trustees are compiling a robust schedule that will focus on the continued viability of the fabric of the building, both to serve those that attend and to mitigate loss or damage to the structure.

## Staff

The Trustees are clear that the staff are one of the organisation's greatest assets. In ensuring that staff are appropriately remunerated the Vine Christian Centre has chosen to sign up to the Joseph Rowntree Real Living Wage and so no member of staff is paid less than this.



## The buildings



As highlighted by several professional reports as referred to above, the Trustees are aware that the building remains in need of substantial investment. A schedule is in development that will guide the phased work to maintain and improvement the buildings over the coming years. Appropriate priority will be given to those improvements that mitigate risk to people or property. It is the intention of the Trustees to use much of the operational surplus to invest in the fabric

of the building, and the Trustees do not have current plans to raise capital using a legal charge over the property.

## **Financial News**

### **Income generation**

The Vine Christian Centre is dependent on the generosity of the congregation for the majority of its income. Many individuals practice tithing and as a consequence income from offerings tend to be constant and steady throughout the year. During the financial year tithes and offerings increased by around 8.5 %. Expenditure reduced by 13% which was primarily due to a 26% reduction in wage costs.

### **Reserves**

The Trustees have maintained a policy on reserves so that in the event of some adverse or unforeseen circumstances, there would always be sufficient reserves available to meet core objectives and contracts. The level of reserves is not set as a specific formula, the Trustees estimate the level of reserves to cover such events to be around £30,000.

### **Grant making policy**

The Trustee's policy is to tithe (i.e., give away) at least 10% of its income to external organisations and individuals who are working toward the same aims and charitable objectives as the Vine Christian Centre.

## Review of the Year 2023 - 2024

### The Vision of the Church

The vision of the church is to build a House of Love so that there is a visible demonstration of the Agape love of God revealed through God's church to the community of Bridgend and the nation of Wales.

The Bible is central to the church's teaching and beliefs.

In accordance with Romans 1:18 *"The righteous shall live by faith"* and John 13:34 *"A new commandment I give to you, that you love one another: just as I have loved you, you also are to love one another"* there is a strong emphasis on walking by faith through love.

We are building a "HOUSE of LOVE" in three directions: -

- We love **UPWARD** toward the Father and seek to fulfil the greatest commandment to love the Lord our God with all our heart and with all our soul and with all our mind.
- We love **WITHIN** towards our church family here in the Vine by seeking to fulfil Jesus' commandment to the church "as I have loved you, you also are to love one another".
- We love **OUTWARDLY** towards our community and therefore seek to fulfil the commandment to "love our neighbour as our self."

The review of 2023/24 which follows highlights the activities of the Church in the 12-month period in each of the areas above



## Building a “HOUSE of LOVE” - UPWARDS

We love **UPWARD** toward the Father and seek to fulfil the greatest commandment to love the Lord our God with all our heart and with all our soul and with all our mind.

As we look to love the Father the two main areas of church activity are prayer and worship.

### Prayer

Coming together to pray is an important aspect of the life of the church family. When the church comes together to pray, God speaks, mountains move, and prison doors open. We see this demonstrated in Acts 2 when the Holy Spirit fell on the church, Acts 4 when the building they were in was shaken, Acts 12 when Peter was rescued from prison by Angels and Acts 13 when Paul and Barnabas were set apart for their missionary work.

### Prayer Week

Prayer week is a time of focused prayer in January. A prayer diary was produced for everyone, and we met as a church family 8 times across the week.

This year the church focused on the words of Jesus *“Your kingdom come, your will be done on earth as it is in heaven”* **Matthew 6v10**. There was a separate prayer focus for each day;

Sunday	Prepare your heart
Monday	Spiritual Unity
Tuesday	Go into all the world
Wednesday	God amongst His people
Thursday	Your Kingdom come
Friday	Vine to a vineyard.
Saturday	Fresh revelation



### Prophetic words

At the beginning of October Alex remarked that the Lord was saying as we have two pregnant women in the worship team getting ready to give birth the Lord was going to birth something new in the church. Then on the 15<sup>th</sup> October both babies were born on the same day.

## VINE CHRISTIAN CENTRE, BRIDGEND

### REPORT OF THE TRUSTEES CONTINUED FOR THE YEAR ENDED 31 MARCH 2024

---

During prayer week we invited a number of prophetic voices to speak into the church. The following words were received:

- I the Lord am taking you in a very specific direction and as you obey the voice of the Lord your God and take that even **left turn**, as He leads you down the path it is almost as if you are going downhill and turning to the left, the Lord himself is taking you down a different way and He is doing it so that you may have a very specific encounter with Him. **Richard Steadman**
- The Lord will do a new thing among us and we will experience the sound of heaven. Those who have forsaken the house will return. I will move by my Spirit and you will minister in a new Authority. **David Glave**
- We are in a season of preparation for change that is coming. A next wave of something is going to hit that will affect normal life in some way and it won't be easy. We have a year or two to get ready. **Isaiah 54v1-3** The Lord wants to change us from a Vine to a vineyard. Strengthen the stakes. God will add more tent pegs. Everyone has a part to play. Prophetic sign of a tent peg - **David Chadwick**
- Isaiah 54v1-3. Sing O barren women your barrenness is no more  
We are here for a purpose so now enlarge yourself, extend the tent. Prophetic sign of Tent pegs – enlarge your tent - **Geoff Waggot**

### The Prayer Chain

The prayer chain was set up to respond to crisis and emergencies that require prayer. This confidential service is activated by a phone call to the office. The requests are then given to the team leader who in turn passes them, and any updates on via phone, text, or e-mail down the chain.

The chain enables a team to quickly and collectively pray for any needs that arise, both within the church and outside. Examples of requests received this year are personal healings, breakthroughs in personal or family circumstances, and healings for others including relations, friends, and colleagues.

### The hour of Prayer

"The Hour of Prayer" is an in person gathering to pray and worship together. This meeting is the middle of every month and provides a focused hour of corporate prayer. It provides an opportunity for the church family to gather together to pray for the church, the community and the nation

## Worship

The Worship Team is led by Kelly Poole and it continues to make a major contribution throughout the church. The worship team serve the church and is involved in the regular meetings including Sunday gatherings, hour of prayer and encounter worship evenings as well as any special events.



**Events** The Worship Team plays a significant role in the *'life of the church'* and all members of the team use their skills with passion and enthusiasm to serve the vision of the church. Throughout the year the

Worship Team have been involved in a varied number of events. The team is committed to excellence, and everyone gives so willingly of their time to ensure events run smoothly and to a high standard. The Sound Team continues to play an integral part of the Team and the commitment and effort shown throughout the year has been exemplary.

## New sound and lighting system

In February a new digital sound system was installed replacing the old analogue system which was deemed to have come to the end of its natural life. Along side the new sound system a new lighting system was installed. The installation has provided a significant upgrade to the church's technological, musical and lighting facilities.

## Building a “HOUSE of LOVE” - WITHIN

We love **WITHIN** towards our church family here in the Vine by seeking to fulfil Jesus’ commandment to the church “*as I have loved you, you also are to love one another*”. We have sought to invest in, and love, our church family in several ways during the year some of which are mentioned below.

### Pastoral Care

Throughout the year the church has sought to ensure people were pastorally supported. Pastoral support and prayer are provided by the pastors of the church and others as requested.

### Sunday services

The Sunday 10.30am service is the focus of our gathered church family. It is a time to worship God and receive instruction, encouragement, and correction from God’s Word.

A full programme for years 2 to 18 is run during the Sunday service with approximately 30 volunteers helping in all the age groups

### In House speakers

- Alex Ashton
- Peter Williams
- David Chadwick
- Tim Grist
- Ben Pottinger

### Guest speakers

- Pastor Femi Ogunbanwo - North Wales
- Pastor John Bullock - Gateway Church Newcastle
- Pastor Peter Davies – Crewe
- Pastor Ian Andersen – Neath



### **Events directed at the Church family.**

- Launch of Freedom in Christ - September 2023
- Christmas Choir – December 2023
- Prayer Week – January 2024.
- Easter Celebrations
- What on Earth am I hear for – teaching course with Rick Warren Feb 2023

### **Events directed 'Outwards' – details later in this report.**

- The Wildmill Festival – August 2023.
- A Wildmill Christmas – seasonal outreach into the Wildmill estate – December 2023.
- Christmas outreach events utilising a cross section of the church – December 2023.

### **Youth Ministry**

The Church believes strongly in investing in, encouraging and equipping future generations to do great things for God. Therefore, a range of ministries continued to work with our young people throughout the year.

### **Breakthrough Youth 11-18 years**

#### **Breakthrough Fridays**

Friday Night Youth - This meeting is aimed at Years 7-13 and met weekly from 7.00 to 9.00pm.

#### **Breakthrough Sundays**

Sunday Morning Youth - This meeting is aimed at Years 7-13 and takes place during the service after the offering when traditionally all minors go to their respective teaching groups.

#### **Service Sunday**

Members of Breakthrough Youth are able to sign up to a variety of ministry areas, where they serve on the last Sunday of each month. This is known as 'Service Sunday.'

Ministry areas include: Kingdom Kids, Sparklers, Teas and Coffees, Ushering, Welcome Team, Worship Team, Sound Team, and the Words team.

The idea is to give the opportunity for our young people to serve in a variety of ways, discover what they are good at, have a better idea about the church as a whole and build relationships with church members they might not normally encounter.

### **Dramarama Days**

These drama days encourage young people to cultivate their dramatic gifting. They are usually run in half term and provide an opportunity for training, teaching, fellowship and fun. They also work towards building stronger relationships within our youth group.

### **Youth Band**

In August Youth Band was relaunched with the aim of cultivating our next generation of musicians. Claire and Kelly led the sessions and they culminated in the Youth leading the worship during the family service at Christmas.



### **Kingdom Kids 5-11 years**

This group is for children in Reception to Year 6 (typically 4 – 11 year olds) and is led by Helen Pettey and her team

In October 2023, the team ran a Narnia Party as an alternative Halloween event. The event provided a safe, scare-free, and fun-filled environment for children – churched or unchurched – to come to and to also hear a relevant bible lesson.

The Kingdom Kids children and team were able to put together a fun Christmas presentation for the Church, which was enjoyed by all.



### **Sparklers**

This group is for children aged between 2-5 years old.

### **Sparklers continued**

Jane Ashton has overall lead for crèche and called it 'Sparklers' – the aim being that each child can shine for Jesus from a young age.

Currently one year olds to children starting Reception are accepted. A team of volunteers have stepped up and four leaders including Jane teach each month with two supporting staff. The team have been very accommodating and supportive particularly through Covid spikes. Sparklers has grown in numbers over the year which is very encouraging.

### **Small Groups**

Small discipleship groups ran in the church until the summer holidays looking at the book of ACTS using the IVP study book by Phyllis Le Peau. They met fortnightly and provide discussion, fellowship, and pastoral support for people within the church.

### **Freedom in Christ**

In September the church launched the freedom in Christ course and everyone was encouraged to attend. This was run throughout the Autumn and approximately 50 persons attended. The course was well received and many people were spiritually impacted by what they learnt. It is intended to run the course every other year and encourage every person to attend it at least once.

### **Tuesday Church**

In January Tuesday church was launched. The focus was on the vision of the church and in particular The seven foundations of the house of love that are listed below.

1. **Worship** - We live to worship and honour God and seek to encounter His presence in our gatherings.
2. **Family** - We desire to create a safe, loving and welcoming community for people of all ages and backgrounds to belong.
3. **Mission** - We are intentional about sharing the good news of Jesus locally, nationally and internationally.
4. **Faith** - We believe the Bible is the Word of God and we teach people to live by faith.
5. **Discipleship** - We equip believers to become followers of Jesus, and seek to build up the body of Christ to do His work.
6. **Gifts of the Spirit** - We believe that all the gifts of the Holy Spirit are available to us today and we expect to see people healed and made whole by the power of God.
7. **Resourcing** - We believe in the goodness and abundance of Father God. We are blessed so that we can be a blessing and seek to resource others to extend the Kingdom of God.

### **New life**

During the year 2 adults and 2 children became part of the membership of the church.

We also held one baptism service during the year. There were 6 baptised in January 2024.

## Building a “HOUSE of LOVE” – OUTWARDS

We love **OUTWARDLY** towards our community and therefore seek to fulfil the commandment to “love our neighbour as our self.” The church seeks to be missional in its outlook and activities, endeavouring to reach the world with the good news of Jesus Christ.

Church members are encouraged and challenged to reach people in their own sphere of relationships with the love and message of Jesus. This is seen to be the responsibility of everyone within the church not just a select few.

In addition to this the Church reaches out to people and communities locally, nationally, and internationally as the Lord provides us opportunities. At the heart of our community outreach are the commandments of Jesus to love our neighbour and to go into the world and preach the Gospel. We do this through sharing both the message of the gospel as well as practical help and support that is rooted in the good news of Jesus.

## Sharing the message of the gospel

### The Wildmill Festival

Wildmill is a local housing estate known for being an area of deprivation (Ranked 118 out of 1,909 local areas in Wales and is currently in the 10% most deprived areas in Wales – *Welsh index of Multiple deprivation (WIMD) 2019*). It is approximately 15 minutes’ walk from the church building. In August 2023 the Church organised its second three-day festival in Wildmill to both increase its presence within the estate and to bless the people of the community. This year we partnered with Litchard Mission.

The following events were run either out of the Wildmill Community Life Centre or the Vine Christian Centre:

- Monday - Craft Day
- Tuesday - Fun day
- Wednesday - Musical Theatre

In addition the church was able to bless 25 families with food hampers. These individuals were either nominated by key community individuals or were people met by team members.

All the various events were well attended and the church’s reputation within the community has continued to positively increase.



### **Christmas outreach events**

During December we held four separate outreaches; A Carol service, a Christmas family service, a candle light communion service on the 24<sup>th</sup> and a Christmas in Wildmill event.

Activities across the Christmas season included:

- A Sunday morning family service where selection boxes were given out to every child in attendance. This was mirrored in the evening to ensure everyone could attend at least one service.
- A Carol service on the Sunday before Christmas
- A Christmas event in the Wildmill Community Life Centre where selection boxes were given to every child. The event was very well attended, and the numbers of selection boxes needed was under estimated. More selection boxes needed to be bought during the event to ensure there were enough to go around.
- A Christmas Eve communion service by candlelight.
- A supermarket voucher programme was organised through the church hands of compassion ministry to help families in greatest need within the church family.



## **Providing Practical Care and Support**

### **Bridgend Pregnancy Crisis Centre**

The Bridgend Pregnancy Crisis Centre [ [www.bridgendpcc.org](http://www.bridgendpcc.org) ] continued to support women in crisis.

### **Bridgend Pregnancy Crisis Centre continued**

The virtual office telephone system offers a full service as all calls to the number are transferred to a mobile so that the person can be spoken to at any time by mutual appointment – a service which clients have really appreciated. The Centre also operates out of Hartshorn House in Maesteg.

The Centre counsellors provide support for women and their families in dealing with an unexpected pregnancy, abortion, post abortion, miscarriage and still birth. All counsellors are fully trained and specialise in pregnancy crisis issues, aiming to provide accurate information with short or long-term support and counselling that is client led.

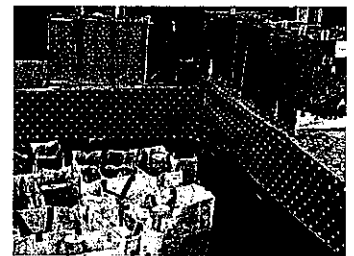


### **Hands of Compassion**

The Church demonstrates practical love to people through the Hands of Compassion fund with the giving of benevolent gifts and food hampers in times of crisis. During the Christmas season the Church partnered with Llamau [ [www.llamau.org.uk](http://www.llamau.org.uk) ] by providing hampers for their hostels and their residents within the Bridgend County.



Donations of food and money are made by church members and are supplemented by Pound for the Kingdom collections. This has enabled the church to support those in need with hampers and supermarket vouchers.



### **Supporting Other Ministries**

#### **Tithe of the Tithe and Pound for the Kingdom**

The Church believes in tithing and practices what it preaches through the Tithe of the Tithe. This means that 10% of church income is given to organisations and ministries in furtherance of causes which complement and supplement the Church's vision and activities.

## Tithe of the Tithe and Pound for the Kingdom continued

The money is also added to by monthly collections from the congregation called Pound for the Kingdom.

During the year 2023/ 24 the following ministries were all supported:

- Love Wales Evangelism. [ [www.lovwales.org.uk](http://www.lovwales.org.uk) ]
- Christians Against Poverty. [ [www.capuk.org](http://www.capuk.org) ]
- Street Lights. (supporting women out of prostitution). [ [www.streetlight.co.uk](http://www.streetlight.co.uk) ]
- Message Wales. [ [www.message.org.uk](http://www.message.org.uk) ]
- SAT-7 Christian TV. [ [www.sat7.org](http://www.sat7.org) ]
- Housing Justice Cymru. [ [www.housingjustice.org.uk](http://www.housingjustice.org.uk) ]
- Elam Ministries. [ [www.elam.com](http://www.elam.com) ]

In addition to the above ministries the church has well established relationships with several ministries that have been supported over the years, including during 2023/24.

These include:

### The Christian Institute

The Christian Institute [ [www.christian.org.uk](http://www.christian.org.uk) ] is a British registered charity and Christian pressure group run by Colin Hart. They promote a conservative Christian viewpoint, founded on a belief in Biblical inerrancy. The Christian Institute exists for *'the furtherance and promotion of the Christian religion in the United Kingdom'* and *'the advancement of education'*.



### Liz Hughes



Liz is a Ministry team leader in World Horizons UK [ [www.worldhorizons.co.uk](http://www.worldhorizons.co.uk) ] and a member of the Vine Christian Centre. She leads a team of Base Support workers who support workers trained and sent out from the UK. This involves helping prepare colleagues before they leave for another nation, supporting them via e-mail and Skype® while they are there, and debriefing them when they come back as well as coordinating all the practical arrangements. They are the first point of contact in an emergency and liaise with the sending churches.

She is also a Pastoral Field Visitor for Southeast Asia and visit the teams there regularly. She is the prayer coordinator for the UK team and helps at Signpost and English Corner in Swansea which are outreaches to international students, workers, and refugees in the city.



## Rob Burns



Rob leads Missional Links Wales [ [www.missionallinkswales.org.uk](http://www.missionallinkswales.org.uk) ] whose purpose is to:

- encourage USA churches and Welsh churches to collaborate in mission across each Welsh county and across the nation in long term relationships.
- inspire Welsh churches to work together as a 'hub of transformation' to bring lasting spiritual transformation to their county.
- provide ongoing support, missional training and consultancy to Welsh and USA churches.



With evangelical Christianity at just 2% of the population of 3 million (*Source: Evangelical Alliance (Wales)*), Wales is a mission field in extreme need of strategic help and support from outside of its borders. Missional Links Wales seeks to support and initiate this process.

## Open Doors

The church is a partner church with Open Doors, [ [www.opendoorsuk.org](http://www.opendoorsuk.org) ] an international ministry serving persecuted Christians and churches worldwide.

Open Doors support persecuted Christians with Bibles, Christian materials, training, livelihood skills, and advocacy - and in a whole host of other ways - so that they know they are not forgotten and can stand strong to serve their communities so that they can give life. They seek to mobilise the church in the UK & Ireland, not only to serve Christians living under religious persecution, but also to learn from them what it means to be a disciple of Jesus. In over 50 countries.



**OpenDoors**  
Serving persecuted Christians worldwide

The church supports Open Doors financially, through prayer, participation in the International Day of Prayer for the persecuted church and Christmas card letter writing initiative to prisoners.



## Sat7

Sat7 Television [ [www.sat7.org](http://www.sat7.org) ] supports the Christians of the Middle East and North Africa in their Christian witness and lives. The station beams the Good News of the Kingdom of God straight into people's homes, into the centre of family life. It delivers Christian media for the Middle East and North Africa.

Through the power of satellite television, a message of hope and love is shared directly into the lives of millions of people, every day. Their channels bypass strict government censorship and side-step the challenge of illiteracy. Viewers are drawn to the high-quality programming and a hope-filled view of the world.

## Phil James – Trans world radio

Phil James has had a relationship with our church going back over 20 years during our time as a national book distributor. Phil is a missionary with Trans World Radio. Phil serves on their US Media Services as a Senior Account Executive.

Trans World Radio is the world's most far-reaching Christian radio network. Speaking fluently in more than 300 languages, TWR exists to reach the world for Jesus Christ. It's global media outreach engages millions in 190 countries with biblical truth, leading people from doubt to decision to discipleship.



## Conclusion

As I reflect on the year there has been a steadily building spiritual momentum that has seen the church recover in size, strength and vitality. It has been especially encouraging to see the growth in all the children ministries and in particularly the growth of Breakthrough Youth.

The Church has been challenged by the prophetic words from prayer week in January. We were challenged to allow God to change us and to meet with us. When Geoff and David both spoke out of Isaiah 54v1-3 and both provided tent pegs as a prophetic sign it felt like God was speaking loudly to us.

The focusing of our mission towards the Wildmill estate continues to build relationships between our church and the local community. The church will continue to focus its evangelistic endeavours towards Wildmill in the years ahead.

There is still a need for the Holy Spirit to move through our church in a fresh way, to refresh, revive and encourage God's people. As we look ahead, I believe we need a greater focus on prayer as the things we are looking to see are not by might, nor by power but by the Spirit of God.

I want to end by thanking all those who have served, given, prayed, and encouraged Jane and myself. We appreciate and love you and look forward to all God is going to do in the years ahead.

Every Blessing

Alex

**Pastor Alex Ashton**

## VINE CHRISTIAN CENTRE, BRIDGEND

### REPORT OF THE TRUSTEES CONTINUED FOR THE YEAR ENDED 31 MARCH 2024

---

#### Statement of trustees' responsibilities

The trustees (who are also directors of Vine Christian Centre, Bridgend for the purpose of company law) are responsible for preparing the Trustees' Annual Report and the financial statements in accordance with applicable law and United Kingdom Accounting Standards (United Kingdom Generally Accepted Accounting Practice).

The trustees are responsible for keeping proper accounting records which disclose with reasonable accuracy at any time the financial position of the charitable company and which enable them to ensure that the financial statements comply with the Companies Act 2006. They are also responsible for safeguarding the assets of the charitable company and hence for taking reasonable steps for the prevention and detection of fraud and other irregularities.

Company law requires the trustees to prepare financial statements for each financial year which give a true and fair view of the state of affairs of the charitable company and of the incoming resources and application of resources, including the income and expenditure, of the charitable company for that period. In preparing these financial statements, the trustees are required to:

- select suitable accounting policies and then apply them consistently;
- observe the methods and principles in the Charities SORP;
- make judgements and estimates that are reasonable and prudent;
- state whether applicable UK Accounting Standards have been followed, subject to any material departures disclosed and explained in the financial statements; and
- prepare the financial statements on the going concern basis unless it is inappropriate to presume that the charitable company will continue in operation.

#### Small company provisions

The company has taken advantage of the small companies' exemption with regards this report which has been prepared in accordance with the provisions of the Companies Act 2006 applicable to companies subject to the small companies regime.

This trustees report was approved by the board on 2<sup>nd</sup> December 2024 and signed on its behalf by

  
A M Ashton  
Trustee / Director / Chair

**INDEPENDENT EXAMINER'S REPORT TO THE TRUSTEES OF  
VINE CHRISTIAN CENTRE, BRIDGEND**

---

**Independent examiner's report to the trustees of Vine Christian Centre, Bridgend ('the Company')**

I report to the charity trustees on my examination of the accounts of the Company for the year ended 31 March 2024.

**Responsibilities and basis of report**

As the charity's trustees of the Company (and also its directors for the purposes of company law) you are responsible for the preparation of the accounts in accordance with the requirements of the Companies Act 2006 ('the 2006 Act').

Having satisfied myself that the accounts of the Company are not required to be audited under Part 16 of the 2006 Act and are eligible for independent examination, I report in respect of my examination of your charity's accounts as carried out under Section 145 of the Charities Act 2011 ('the 2011 Act'). In carrying out my examination I have followed the Directions given by the Charity Commission under Section 145(5) (b) of the 2011 Act.

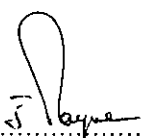
**Independent examiner's statement**

Since your charity's gross income exceeded £250,000 your examiner must be a member of a listed body. I can confirm that I am qualified to undertake the examination because I am a member of the Institute of Chartered Accountants in England and Wales, which is one of the listed bodies.

I have completed my examination. I confirm that no matters have come to my attention in connection with the examination giving me cause to believe:

1. accounting records were not kept in respect of the Company as required by Section 386 of the 2006 Act; or
2. the accounts do not accord with those records; or
3. the accounts do not comply with the accounting requirements of Section 396 of the 2006 Act other than any requirement that the accounts give a true and fair view which is not a matter considered as part of an independent examination; or
4. the accounts have not been prepared in accordance with the methods and principles of the Statement of Recommended Practice for accounting and reporting by charities (applicable to charities preparing their accounts in accordance with the Financial Reporting Standard applicable in the UK and Republic of Ireland (FRS 102)).

I have no concerns and have come across no other matters in connection with the examination to which attention should be drawn in this report in order to enable a proper understanding of the accounts to be reached.

  
.....

J E Payne ACA

Graham Paul Limited  
Court House  
Court Road  
Bridgend  
CF31 1BE

Date: 3/12/2024 .....



# VINE CHRISTIAN CENTRE, BRIDGEND

## STATEMENT OF FINANCIAL ACTIVITIES (INCORPORATING AN INCOME AND EXPENDITURE ACCOUNT) FOR THE YEAR ENDED 31 MARCH 2024

	Notes	Unrestricted funds £	Restricted funds £	31.3.24 Total funds £	31.3.23 Total funds £
<b>INCOME AND ENDOWMENTS FROM</b>					
Donations and legacies		253,871	9,056	262,927	241,902
Other trading activities	2	3,030	-	3,030	3,684
Investment income	3	10,426	-	10,426	8,952
Other income		<u>158</u>	<u>-</u>	<u>158</u>	<u>82</u>
<b>Total</b>		<u>267,485</u>	<u>9,056</u>	<u>276,541</u>	<u>254,620</u>
<b>EXPENDITURE ON</b>					
Raising funds	4	3,863	-	3,863	4,112
<b>Charitable activities</b>	5				
General Church Fund		174,024	9,952	183,976	212,933
Gates of Praise		-	-	-	87
Bridgend Pregnancy Crisis Centre		<u>1,257</u>	<u>-</u>	<u>1,257</u>	<u>1,317</u>
<b>Total</b>		<u>179,144</u>	<u>9,952</u>	<u>189,096</u>	<u>218,449</u>
<b>NET INCOME/(EXPENDITURE)</b>		88,341	(896)	87,445	36,171
Transfers between funds	16	<u>(3,480)</u>	<u>3,480</u>	<u>-</u>	<u>-</u>
<b>Net movement in funds</b>		84,861	2,584	87,445	36,171
<b>RECONCILIATION OF FUNDS</b>					
Total funds brought forward		<u>686,477</u>	<u>-</u>	<u>686,477</u>	<u>650,306</u>
<b>TOTAL FUNDS CARRIED FORWARD</b>		<u>771,338</u>	<u>2,584</u>	<u>773,922</u>	<u>686,477</u>

### CONTINUING OPERATIONS

All income and expenditure has arisen from continuing activities.

### COMPARATIVES FOR THE STATEMENT OF FINANCIAL ACTIVITIES

During the course of this years accounts, some restricted income and expenditure relating to the previous year was identified that was not disclosed in last years accounts. As the amounts involved were not material to the accounts, the comparatives have not been amended to show them separately. This has had no impact on the overall fund position as there were no restricted funds brought forward at the start of the previous year or carried forward at the end of it.

The notes form part of these financial statements

VINE CHRISTIAN CENTRE, BRIDGEND

**BALANCE SHEET**  
**31 MARCH 2024**

	Notes	Unrestricted funds £	Restricted funds £	31.3.24 Total funds £	31.3.23 Total funds £
<b>FIXED ASSETS</b>					
Tangible assets	11	606,653	-	606,653	569,304
<b>CURRENT ASSETS</b>					
Stocks	12	288	-	288	-
Debtors	13	22,887	-	22,887	19,366
Cash at bank and in hand		<u>149,550</u>	<u>2,584</u>	<u>152,134</u>	<u>103,095</u>
		172,725	2,584	175,309	122,461
<b>CREDITORS</b>					
Amounts falling due within one year	14	(8,040)	-	(8,040)	(5,288)
<b>NET CURRENT ASSETS</b>		<u>164,685</u>	<u>2,584</u>	<u>167,269</u>	<u>117,173</u>
<b>TOTAL ASSETS LESS CURRENT LIABILITIES</b>		<u>771,338</u>	<u>2,584</u>	<u>773,922</u>	<u>686,477</u>
<b>NET ASSETS</b>		<u>771,338</u>	<u>2,584</u>	<u>773,922</u>	<u>686,477</u>
<b>FUNDS</b>	16				
Unrestricted funds:					
General Church Fund				771,338	686,477
Restricted funds:					
New Building Fund				480	-
Open Doors				<u>2,104</u>	<u>-</u>
				<u>2,584</u>	<u>-</u>
<b>TOTAL FUNDS</b>				<u>773,922</u>	<u>686,477</u>

The notes form part of these financial statements

VINE CHRISTIAN CENTRE, BRIDGEND

BALANCE SHEET - continued  
31 MARCH 2024

---

The charitable company is entitled to exemption from audit under Section 477 of the Companies Act 2006 for the year ended 31 March 2024.

The members have not required the company to obtain an audit of its financial statements for the year ended 31 March 2024 in accordance with Section 476 of the Companies Act 2006.

The trustees acknowledge their responsibilities for

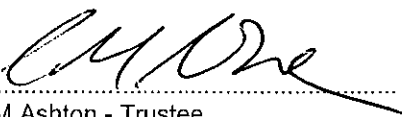
- (a) ensuring that the charitable company keeps accounting records that comply with Sections 386 and 387 of the Companies Act 2006 and
- (b) preparing financial statements which give a true and fair view of the state of affairs of the charitable company as at the end of each financial year and of its surplus or deficit for each financial year in accordance with the requirements of Sections 394 and 395 and which otherwise comply with the requirements of the Companies Act 2006 relating to financial statements, so far as applicable to the charitable company.

These financial statements have been prepared in accordance with the provisions applicable to charitable companies subject to the small companies regime.

The financial statements were approved by the Board of Trustees and authorised for issue on

2<sup>nd</sup> December 2024

and were signed on its behalf by:

  
A M Ashton - Trustee

The notes form part of these financial statements

---

**1. ACCOUNTING POLICIES**

**Basis of preparing the financial statements**

The financial statements of the charitable company, which is a public benefit entity under FRS 102, have been prepared in accordance with the Charities SORP (FRS 102) 'Accounting and Reporting by Charities: Statement of Recommended Practice applicable to charities preparing their accounts in accordance with the Financial Reporting Standard applicable in the UK and Republic of Ireland (FRS 102) (effective 1 January 2019)', Financial Reporting Standard 102 'The Financial Reporting Standard applicable in the UK and Republic of Ireland' and the Companies Act 2006. The financial statements have been prepared under the historical cost convention.

The presentation currency of the financial statements is the Pound Sterling (£).

**Income**

All income is recognised in the Statement of Financial Activities once the charity has entitlement to the funds, it is probable that the income will be received and the amount can be measured reliably.

Donations and legacies are recognised at the point of receipt with any associated gift aid recognised in the period the claim relates to.

Income from trading activities consists of income received in exchange for the supply of goods and services in order to raise funds and is recognised when entitlement has occurred.

Investment income includes interest and rental income. Interest is recognised on receipt and rent income is recognised as the charity's right to receive payment is established.

No amount is included in the financial statements for volunteer time in line with the SORP.

**Expenditure**

Raising funds expenditure comprises costs incurred by the charity in relation to its income from trading activities and rental income.

Charitable activities expenditure comprises those costs incurred by the charity in the delivery of its charitable aims, objectives and activities and those related to the provision of services for its beneficiaries.

Liabilities are recognised as expenditure as soon as there is a legal or constructive obligation committing the charity to that expenditure, it is probable that a transfer of economic benefits will be required in settlement and the amount of the obligation can be measured reliably. Expenditure is accounted for on an accruals basis and has been classified under headings that aggregate all cost related to the category. Where costs cannot be directly attributed to particular headings they have been allocated to activities on a basis consistent with the use of resources.

Grants offered subject to conditions which have not been met at the year end date are noted as a commitment but not accrued as expenditure.

**Support costs**

Support costs are those that assist the work of the charity but do not directly represent charitable activities and include governance costs consisting of accountancy, legal and professional fees. They are incurred directly in support of expenditure on the objects of the charity.

1. ACCOUNTING POLICIES - continued

**Tangible fixed assets**

Tangible fixed assets are stated at cost less accumulated depreciation and accumulated impairment losses. Cost includes the original purchase price, plus any costs directly attributable to bringing the asset to its working condition for intended use.

Depreciation is provided at the following annual rates in order to write off the cost less estimated residual value of each asset over its estimated useful life.

Freehold property	- 2% on cost
Fixtures and fittings	- 15% on cost

Land is not depreciated.

**Stocks**

Stocks are valued at the lower of cost and net realisable value, after making due allowance for obsolete and slow moving items.

**Taxation**

The charity is exempt from corporation tax on its charitable activities.

**Fund accounting**

Unrestricted funds are available for use at the discretion of the trustees in furtherance of the general objectives of the charity and which have not been designated for other purposes.

Designated funds comprise unrestricted funds that have been set aside by the trustees for particular purposes. The aim and use of each designated fund is set out in the notes to the financial statements.

Restricted funds can only be used for particular restricted purposes within the objects of the charity. Restrictions arise when specified by the donor or when funds are raised for particular restricted purposes.

Further explanation of the nature and purpose of each fund is included in the notes to the financial statements.

**Foreign currencies**

Assets and liabilities in foreign currencies are translated into sterling at the rates of exchange ruling at the balance sheet date. Transactions in foreign currencies are translated into sterling at the rate of exchange ruling at the date of transaction. Exchange differences are taken into account in arriving at the operating result.

**Pension costs and other post-retirement benefits**

The charitable company operates a defined contribution pension scheme. Contributions payable to the charitable company's pension scheme are charged to the Statement of Financial Activities in the period to which they relate.

**Cash at bank and in hand**

Cash at bank and cash in hand includes cash and short term highly liquid investments with a short maturity of less than one year. It also includes some donated gold and silver coins, which as they are held as short term accessible charity funds and are readily realisable into cash, have been treated as current assets. They are carried at valuation with any change during the year going through the SOFA as gains or losses on revaluation.

VINE CHRISTIAN CENTRE, BRIDGEND

NOTES TO THE FINANCIAL STATEMENTS - continued  
FOR THE YEAR ENDED 31 MARCH 2024

---

1. ACCOUNTING POLICIES - continued

**Financial instruments**

The charity only has financial assets and financial liabilities of a kind that qualify as basic financial instruments. Basic financial instruments are initially recognised at transaction value and subsequently measured at their settlement value.

**Debtors and creditors receivable/payable within one year**

Debtors and creditors with no stated interest rate and receivable or payable within one year are recorded at transaction price. Any losses arising from impairment are recognised in expenditure.

**Critical accounting judgements and key sources of estimation uncertainty**

The key areas of judgement and estimates used in the preparation of the accounts are:

- allocation of income and expenditure to relevant funds
- the estimated useful life of fixed assets
- recoverability of debts

**Going concern and material uncertainties**

The trustees confirm that they see of no reason why the Charity should not be viewed as a Going Concern entity and consider that there are no material uncertainties about the charities' ability to continue as a going concern nor are there any material uncertainties affecting the current year's accounts.

2. OTHER TRADING ACTIVITIES

	31.3.24	31.3.23
	£	£
Books and courses literature	1,263	468
Conferencing and events income	<u>1,767</u>	<u>3,216</u>
	<u>3,030</u>	<u>3,684</u>

3. INVESTMENT INCOME

	31.3.24	31.3.23
	£	£
Rents received	8,400	8,400
Bank interest received	<u>2,026</u>	<u>552</u>
	<u>10,426</u>	<u>8,952</u>

VINE CHRISTIAN CENTRE, BRIDGEND

NOTES TO THE FINANCIAL STATEMENTS - continued  
FOR THE YEAR ENDED 31 MARCH 2024

4. RAISING FUNDS

Other trading activities

	31.3.24	31.3.23
	£	£
Purchases	2,325	1,034
Bad debts	1,050	2,450
Bank and credit card charges	488	628
	<u>3,863</u>	<u>4,112</u>

5. CHARITABLE ACTIVITIES COSTS

	Direct Costs £	Grant funding of activities (see note 6) £	Support costs (see note 7) £	Totals £
General Church Fund	139,743	32,199	12,034	183,976
Bridgend Pregnancy Crisis Centre	<u>1,257</u>	<u>-</u>	<u>-</u>	<u>1,257</u>
	<u>141,000</u>	<u>32,199</u>	<u>12,034</u>	<u>185,233</u>

Comparatives for charitable activities costs

	Direct Costs £	Grant funding of activities £	Support costs £	Totals £
General Church Fund	171,824	36,939	4,170	212,933
Gates of Praise	-	87	-	87
Bridgend Pregnancy Crisis Centre	<u>1,317</u>	<u>-</u>	<u>-</u>	<u>1,317</u>
	<u>173,141</u>	<u>37,026</u>	<u>4,170</u>	<u>214,337</u>

VINE CHRISTIAN CENTRE, BRIDGEND

NOTES TO THE FINANCIAL STATEMENTS - continued  
FOR THE YEAR ENDED 31 MARCH 2024

6. GRANTS PAYABLE

	31.3.24	31.3.23
	£	£
General Church Fund	32,199	36,939
Gates of Praise	-	87
	<u>32,199</u>	<u>37,026</u>

The total grants paid to individuals during the year was as follows:

	31.3.24	31.3.23
	£	£
Missions	20,241	29,132
Hands of compassion	10,126	4,401
Ministry gifts	1,300	1,200
Other giving	532	2,293
	<u>32,199</u>	<u>37,026</u>

7. SUPPORT COSTS

	Governance costs
	£
General Church Fund	<u>12,034</u>

Support costs, included in the above, are as follows:

	31.3.24	31.3.23
	General Church Fund	Total activities
	£	£
Accountancy fees	3,360	2,940
Bookkeeping	2,561	-
Legal and professional fees	413	1,230
Consultancy	5,700	-
	<u>12,034</u>	<u>4,170</u>



VINE CHRISTIAN CENTRE, BRIDGEND

NOTES TO THE FINANCIAL STATEMENTS - continued  
FOR THE YEAR ENDED 31 MARCH 2024

8. NET INCOME/(EXPENDITURE)

Net income/(expenditure) is stated after charging/(crediting):

	31.3.24	31.3.23
	£	£
Depreciation - owned assets	18,215	14,116
Independent Examination fee	800	660
Independent Examiner - accounts	2,200	1,980
Independent Examiner - other services	<u>360</u>	<u>300</u>

9. TRUSTEES' REMUNERATION AND BENEFITS

	31.3.24	31.3.23
	£	£
Trustees' salaries	47,898	46,017
Trustees' social security	1,117	2,456
Trustees' pension contributions to money purchase schemes	<u>2,070</u>	<u>1,989</u>
	<u>51,085</u>	<u>50,462</u>

Trustees remuneration above relates to A M Ashton. This remuneration is paid to Mr Ashton for his role wholly as Chief Executive & Church Pastor and not for his role as a trustee of the charity.

Trustees' expenses

During the year the charity made payments to 1 (2023: 1) trustee totalling £517 (2023: £764) in respect of the reimbursement of expenses incurred wholly and exclusively for the purposes of charity activities.

Trustee expenses during the year related to travel and subsistence claims of £497 (2023: £461) and reimbursed costs of £20 (2023: £303).

The above expenses paid to Mr Ashton relate wholly to his role as Chief Executive & Church Pastor and not for his role as a trustee of the charity.

10. STAFF COSTS

	31.3.24	31.3.23
	£	£
Wages and salaries	72,304	96,181
Social security costs	1,318	4,223
Other pension costs	<u>3,033</u>	<u>4,095</u>
	<u>76,655</u>	<u>104,499</u>

The average monthly number of employees during the year was as follows:

	31.3.24	31.3.23
Vine Christian Centre	<u>3</u>	<u>4</u>

No employees received emoluments in excess of £60,000 (2023: none).

VINE CHRISTIAN CENTRE, BRIDGEND

NOTES TO THE FINANCIAL STATEMENTS - continued  
FOR THE YEAR ENDED 31 MARCH 2024

11. TANGIBLE FIXED ASSETS

	Freehold property £	Fixtures and fittings £	Totals £
<b>COST</b>			
At 1 April 2023	689,772	26,771	716,543
Additions	-	55,564	55,564
At 31 March 2024	<u>689,772</u>	<u>82,335</u>	<u>772,107</u>
<b>DEPRECIATION</b>			
At 1 April 2023	127,254	19,985	147,239
Charge for year	<u>12,876</u>	<u>5,339</u>	<u>18,215</u>
At 31 March 2024	<u>140,130</u>	<u>25,324</u>	<u>165,454</u>
<b>NET BOOK VALUE</b>			
At 31 March 2024	<u>549,642</u>	<u>57,011</u>	<u>606,653</u>
At 31 March 2023	<u>562,518</u>	<u>6,786</u>	<u>569,304</u>

12. STOCKS

	31.3.24 £	31.3.23 £
Closing stock (course books)	<u>288</u>	<u>-</u>

13. DEBTORS: AMOUNTS FALLING DUE WITHIN ONE YEAR

	31.3.24 £	31.3.23 £
Trade debtors	300	530
Sundry debtors and prepayments	<u>22,587</u>	<u>18,836</u>
	<u>22,887</u>	<u>19,366</u>

VINE CHRISTIAN CENTRE, BRIDGEND

NOTES TO THE FINANCIAL STATEMENTS - continued  
FOR THE YEAR ENDED 31 MARCH 2024

14. CREDITORS: AMOUNTS FALLING DUE WITHIN ONE YEAR

	31.3.24	31.3.23
	£	£
Trade creditors	341	-
Social security and other taxes	239	-
Sundry creditors and accruals	<u>7,460</u>	<u>5,288</u>
	<u>8,040</u>	<u>5,288</u>

15. LEASING AGREEMENTS

Minimum lease payments under non-cancellable operating leases fall due as follows:

	31.3.24	31.3.23
	£	£
Within one year	3,080	3,080
Between one and five years	<u>2,303</u>	<u>5,382</u>
	<u>5,383</u>	<u>8,462</u>

Lease payments recognised as an expense during the year were £3,080 (2023: £2,218).

16. MOVEMENT IN FUNDS

	At 1.4.23	Net movement in funds	Transfers between funds	At 31.3.24
	£	£	£	£
<b>Unrestricted funds</b>				
General Church Fund	686,477	88,637	(3,776)	771,338
Bridgend Pregnancy Crisis Centre	<u>-</u>	<u>(296)</u>	<u>296</u>	<u>-</u>
	686,477	88,341	(3,480)	771,338
<b>Restricted funds</b>				
New Building Fund	-	480	-	480
Compassion UK	-	(58)	58	-
Hands Of Compassion	-	(2,215)	2,215	-
Open Doors	-	2,104	-	2,104
Pound For The Kingdom	<u>-</u>	<u>(1,207)</u>	<u>1,207</u>	<u>-</u>
	<u>-</u>	<u>(896)</u>	<u>3,480</u>	<u>2,584</u>
<b>TOTAL FUNDS</b>	<u>686,477</u>	<u>87,445</u>	<u>-</u>	<u>773,922</u>

VINE CHRISTIAN CENTRE, BRIDGEND

NOTES TO THE FINANCIAL STATEMENTS - continued  
FOR THE YEAR ENDED 31 MARCH 2024

16. MOVEMENT IN FUNDS - continued

Net movement in funds, included in the above are as follows:

	Incoming resources £	Resources expended £	Movement in funds £
<b>Unrestricted funds</b>			
General Church Fund	266,464	(177,827)	88,637
Bridgend Pregnancy Crisis Centre	<u>1,021</u>	<u>(1,317)</u>	<u>(296)</u>
	267,485	(179,144)	88,341
<b>Restricted funds</b>			
New Building Fund	480	-	480
Compassion UK	278	(336)	(58)
Hands Of Compassion	2,848	(5,063)	(2,215)
Open Doors	2,104	-	2,104
Pound For The Kingdom	<u>3,346</u>	<u>(4,553)</u>	<u>(1,207)</u>
	<u>9,056</u>	<u>(9,952)</u>	<u>(896)</u>
<b>TOTAL FUNDS</b>	<u>276,541</u>	<u>(189,096)</u>	<u>87,445</u>

Comparatives for movement in funds

	At 1.4.22 £	Net movement in funds £	Transfers between funds £	At 31.3.23 £
<b>Unrestricted funds</b>				
General Church Fund	600,306	36,183	49,988	686,477
Gates of Praise	-	316	(316)	-
Bridgend Pregnancy Crisis Centre	-	(328)	328	-
Church Building Repair Fund	<u>50,000</u>	<u>-</u>	<u>(50,000)</u>	<u>-</u>
	<u>650,306</u>	<u>36,171</u>	<u>-</u>	<u>686,477</u>
<b>TOTAL FUNDS</b>	<u>650,306</u>	<u>36,171</u>	<u>-</u>	<u>686,477</u>

VINE CHRISTIAN CENTRE, BRIDGEND

NOTES TO THE FINANCIAL STATEMENTS - continued  
FOR THE YEAR ENDED 31 MARCH 2024

16. MOVEMENT IN FUNDS - continued

Comparative net movement in funds, included in the above are as follows:

	Incoming resources £	Resources expended £	Movement in funds £
<b>Unrestricted funds</b>			
General Church Fund	253,108	(216,925)	36,183
Gates of Praise	468	(152)	316
Bridgend Pregnancy Crisis Centre	<u>1,044</u>	<u>(1,372)</u>	<u>(328)</u>
	<u>254,620</u>	<u>(218,449)</u>	<u>36,171</u>
<b>TOTAL FUNDS</b>	<u>254,620</u>	<u>(218,449)</u>	<u>36,171</u>

A current year 12 months and prior year 12 months combined position is as follows:

	At 1.4.22 £	Net movement in funds £	Transfers between funds £	At 31.3.24 £
<b>Unrestricted funds</b>				
General Church Fund	600,306	124,820	46,212	771,338
Gates of Praise	-	316	(316)	-
Bridgend Pregnancy Crisis Centre	-	(624)	624	-
Church Building Repair Fund	<u>50,000</u>	<u>-</u>	<u>(50,000)</u>	<u>-</u>
	650,306	124,512	(3,480)	771,338
<b>Restricted funds</b>				
New Building Fund	-	480	-	480
Compassion UK	-	(58)	58	-
Hands Of Compassion	-	(2,215)	2,215	-
Open Doors	-	2,104	-	2,104
Pound For The Kingdom	<u>-</u>	<u>(1,207)</u>	<u>1,207</u>	<u>-</u>
	-	<u>(896)</u>	<u>3,480</u>	<u>2,584</u>
<b>TOTAL FUNDS</b>	<u>650,306</u>	<u>123,616</u>	<u>-</u>	<u>773,922</u>

VINE CHRISTIAN CENTRE, BRIDGEND

NOTES TO THE FINANCIAL STATEMENTS - continued  
FOR THE YEAR ENDED 31 MARCH 2024

16. MOVEMENT IN FUNDS - continued

A current year 12 months and prior year 12 months combined net movement in funds, included in the above are as follows:

	Incoming resources £	Resources expended £	Movement in funds £
<b>Unrestricted funds</b>			
General Church Fund	519,572	(394,752)	124,820
Gates of Praise	468	(152)	316
Bridgend Pregnancy Crisis Centre	<u>2,065</u>	<u>(2,689)</u>	<u>(624)</u>
	522,105	(397,593)	124,512
<b>Restricted funds</b>			
New Building Fund	480	-	480
Compassion UK	278	(336)	(58)
Hands Of Compassion	2,848	(5,063)	(2,215)
Open Doors	2,104	-	2,104
Pound For The Kingdom	<u>3,346</u>	<u>(4,553)</u>	<u>(1,207)</u>
	<u>9,056</u>	<u>(9,952)</u>	<u>(896)</u>
<b>TOTAL FUNDS</b>	<u><u>531,161</u></u>	<u><u>(407,545)</u></u>	<u><u>123,616</u></u>

The purposes of the funds listed above are as follows:

**Unrestricted:**

**General Church Fund** - This fund comprises of income and expenditure related to the general activities and related running costs of the charity.

**Gates of Praise** - This fund comprises shop income and expenditure which ceased in the previous year. Any surplus or deficit is transferred to the general church fund at the period end.

**Bridgend Pregnancy Crisis Centre** - This fund provides support and counselling for women and their families in unexpected pregnancy, post abortion, miscarriage and following baby loss. Any surplus or deficit is transferred to the general church fund at the period end

**Church Building Repair Fund** - This fund was designated for the purposes of significant repairs and improvements work required to be carried out on the church building. The works works related to this fund were carried out and completed during the previous year.

**Restricted:**

**New Building Fund** - This fund comprises of income and expenditure related to the planned future extension of the current church building.

**Compassion UK** - This fund provides support relating to the sponsorship of a child in the third word. Any deficit on this fund at the period end is covered by general church funds transfer.

**16. MOVEMENT IN FUNDS - continued**

**Hands Of Compassion** - This fund provides help and support to people in financial need. Any deficit on this fund at the period end is covered by general church funds transfer.

**Open Doors** - This fund provides support to the persecuted church.

**Pound For The Kingdom** - This fund collects income for and redistributes to other organisations. Any deficit on this fund at the period end is covered by general church funds transfer.

**17. EMPLOYEE BENEFIT OBLIGATIONS**

The charity operates a defined contribution pension plan for its employees. The amount recognised as an expense in the period was £3,033 (2023: £4,095).

**18. RELATED PARTY DISCLOSURES**

During the year, the charity received donations totalling £43,056 from 4 trustees (2023: £43,450 from 4 trustees).

Please refer to note 9 for trustees' remuneration, benefits and expenses.

**19. COMPANY LIMITED BY GUARANTEE**

The charity is a company limited by guarantee and accordingly does not have a share capital.

Every member of the company undertakes to contribute such amount as may be required (not exceeding £1) to the assets of the charitable company in the event of it being wound up while he or she is a member, or within twelve months after he or she ceases to be a member

VINE CHRISTIAN CENTRE, BRIDGEND

DETAILED STATEMENT OF FINANCIAL ACTIVITIES  
FOR THE YEAR ENDED 31 MARCH 2024

	31.3.24 £	31.3.23 £
<b>INCOME AND ENDOWMENTS</b>		
<b>Donations and legacies</b>		
Donations and offerings	208,747	206,608
Gift aid	<u>54,180</u>	<u>35,294</u>
	262,927	241,902
<b>Other trading activities</b>		
Books and courses literature	1,263	468
Conferencing and events income	<u>1,767</u>	<u>3,216</u>
	3,030	3,684
<b>Investment income</b>		
Rents received	8,400	8,400
Bank interest received	<u>2,026</u>	<u>552</u>
	10,426	8,952
<b>Other income</b>		
Sundry income	<u>158</u>	<u>82</u>
<b>Total incoming resources</b>	276,541	254,620
<b>EXPENDITURE</b>		
<b>Other trading activities</b>		
Books and courses costs	2,613	34
Stock movement (course books)	(288)	1,000
Bad debts	1,050	2,450
Bank and credit card charges	<u>488</u>	<u>628</u>
	3,863	4,112
<b>Charitable activities</b>		
Trustees' salaries	47,898	46,017
Trustees' social security	1,117	2,456
Trustees' pension contributions	2,070	1,989
Wages	24,406	50,164
Social security	201	1,767
Pensions	963	2,106
Rates and water	1,616	870
Carried forward	78,271	105,369

This page does not form part of the statutory financial statements



**VINE CHRISTIAN CENTRE, BRIDGEND**

**DETAILED STATEMENT OF FINANCIAL ACTIVITIES  
FOR THE YEAR ENDED 31 MARCH 2024**

	31.3.24 £	31.3.23 £
<b>Charitable activities</b>		
Brought forward	78,271	105,369
Insurance	6,388	6,033
Light and heat	7,601	6,919
Telephone	3,167	3,456
Postage and stationery	2,529	3,875
Advertising	80	260
Travelling expenses	1,717	1,059
Refreshments and meals	2,785	2,002
Accommodation	497	149
Subscriptions	120	120
Music, PA & lighting	816	955
Licensing	1,519	1,294
Resource and training costs	1,117	1,318
Events	3,435	3,944
Catering costs	2,479	2,445
Equipment hire	410	934
Venue hire and rental	426	2,583
Repairs and renewals	9,428	16,311
Freehold property	12,876	11,786
Fixtures and fittings	5,339	2,329
Grants to individuals	32,199	37,026
	173,199	210,167
<b>Support costs</b>		
<b>Governance costs</b>		
Accountancy fees	3,360	2,940
Bookkeeping	2,561	-
Legal and professional fees	413	1,230
Consultancy	5,700	-
	12,034	4,170
Total resources expended	189,096	218,449
<b>Net income</b>	87,445	36,171

This page does not form part of the statutory financial statements

