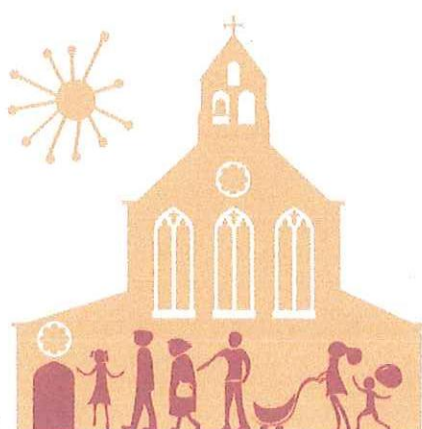


**Parochial Church Council  
ST Mary Magdalene Church, Wandsworth Common**



**Annual Report and Accounts 2023**



**St Mary  
Magdalene**  
WANDSWORTH COMMON



## **ANNUAL REPORT FOR 2023 ON PCC PROCEEDINGS AND PARISH ACTIVITIES**

The Parochial Church Council of St Mary Magdalene, Wandsworth Common (PCC) presents this report on its proceedings for the calendar year to 31<sup>st</sup> December 2023 and on the activities of the parish generally in that year. The PCC's duties and details of how the PCC works, its meetings and membership, its officers, the electoral roll and other matters are set out at the end of this report.

### **Introduction**

**Reverend Philippa Boardman MBE**

We have much to give thanks for in 2023, especially the remarkable volunteering of St Mary Magdalene members. Whether it is Sunday worship, weddings, 'Come and Sing' activities, jumbles, the Christmas Tree Festival or cleaning and building maintenance, we are blessed with over a hundred volunteers from the church and the wider community. Volunteers serve regularly in the community too - in Springfield Hospital, Ernest Bevin Academy, the Meadowcroft and HMP Wandsworth. It is lifelong and some of our volunteers are in their 90's! As we give thanks for our parish life, we also remain deeply aware of the suffering and violence ongoing in our wider world. In 2023, the Awareness Foundation which works in Syria and Iraq, continued as our nominated church charity under the dedicated leadership of the Revd Dr Nadim Nassar and Miss Huda Nassar, working with children and young people on their journey of peace-building. More on their work can be found on their website [www.awareness-foundation.com](http://www.awareness-foundation.com).

2023 has seen the continued outworking of our Mission Action Plan (MAP), details of which are in the following pages. The weekly Circle Time sessions for young children and their parents and carers continues to go from strength to strength (MAP priority 2) and Choral singing for the church and wider community has continued to flourish including a 'Come and Sing Vivaldi Gloria' with 150 singers and a glorious rendition to the wider public at the culmination of the day. January to March 2023 saw our continuing involvement in Wandsworth Council's 'Warm Spaces' initiative, to support those struggling with rising living costs (an element of MAP priority 4) and our Eco Group continued their work of 'greening' our church site with an Eco-Garden created at the west end of the church. (MAP priority 5).

Our care and service of the wider community remain at the heart of our Christian faith. The new Springfield hospital buildings opened in 2023 and our CHAT volunteers (Chaplaincy Activities Team) were welcomed on to the new Jupiter Ward. Support for HMP Wandsworth continued through individual volunteering and remotely through taped services, and ongoing prayer for staff and men. Literacy support at Ernest Bevin Academy continued through 2023 with volunteers hearing reading and then moving to a book group discussion format in the autumn. Our dementia-friendly Eucharist services launched in the new residential care home The Meadowcroft (formerly Ronald Gibson House) in early 2023.

We were delighted that our Choir was asked to sing at the first-ever Springfield Village



Christmas lights 'switch-on' event. We received warm feedback from the NHS Trust and look forward to working together on future events.

We rejoiced with our Curate, the Revd Sam Parker as he was ordained as a priest and presided at the Eucharist for the first time in July 2023. We also give our most sincere and heartfelt thanks to three remarkable lay members of our congregation who stood down after years of faithful and dedicated service in the life of the church. Miss Joan Taylor, who stood down from Junior church leadership at the end of August after an incredible 78 years. (Joan was awarded the British Empire Medal in the King's New Year's honours list of 2023, recognising not only her life of service in church but also volunteering in Guiding and the wider community.) Mr Richard Sweet stepped down as Lay Reader after over 30 years of greatly valued and wise ministry. Mr David Coleman stood down as PCC Secretary and Chair of the Buildings Maintenance Committee after many years of tireless and dedicated service. They will be greatly missed in these roles and their voluntary service is an inspiration.

## **Mission Action Plan 2021 - 2026**

We continue to address the priorities set out in our Mission Action Plan for 2021 to 2026 (MAP). This work is encouraged by the Church of England and remains an essential guide to our work over the next three years, both for the church and within the local community.

The MAP is based on our vision for the future:

*To become a focal point for the community in Wandsworth Common.*

*A beautiful space which inspires, uplifts and energises our outreach through the Glory of God.*

*A caring place of worship, support, safety and opportunity for everyone – including the most vulnerable.*

### **The MAP sets out our five mission priorities:**

1. To proclaim the Good News of the Kingdom and grow in faith as we engage with Wandsworth Common and its institutions, especially the three thousand new people coming to live on the new Springfield Village housing development.
2. To teach, baptise and nurture new believers with a fresh focus on welcoming those currently under-represented in our congregation, especially children, families and young people encouraging them to make SMM their home and to grow in faith and love in Jesus Christ.
3. To create a welcoming and inspiring place of worship and support especially for those who are vulnerable, lonely and in need.
4. To develop a range of inclusive activities in our buildings to support those on the margins of society. Strengthen links to existing SMM ministries in prison, hospital, care home and schools.
5. To energise and be active in our care of creation by participating in the Eco-Church awards scheme and engaging with global issues via a safe space for learning and discussion.



Each priority is supported by specific actions we plan to undertake in the years to 2026. For further information, hard copies of the MAP booklet can be found in the church pews and on our website.

## How we achieved our objectives in 2023

### Proclaiming the Good News of the Kingdom (MAP priority 1)

#### Regular and Special services

In 2023, it felt as if the 'Covid-years' of 2020-22 were finally behind us with increasing attendance at our regular Sunday services, midweek worship and daily offices. These services would not be possible without the amazing volunteering of over 60 church members including cleaning, choir, sidesmen, servers, social media, pew sheet, linens, flower team, maintenance and coffee teams together with our ministry team augmented by support from Rev Dr Nadim Husar and Mr Paul Mitchell who is on placement with the church as part of his ordination training.

Special services during the year included:

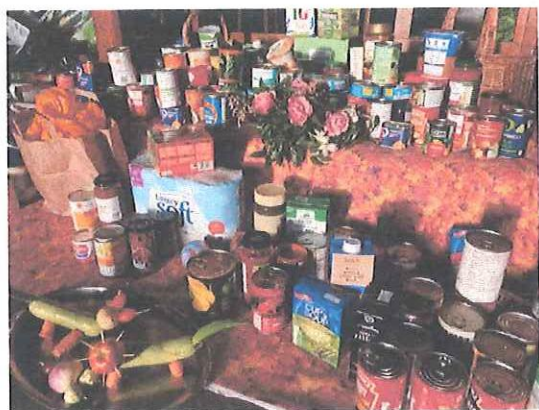
**Lent:** including Ash Wednesday and Mothering Sunday.

**Easter:** Palm Sunday, Maundy Thursday, Good Friday and Easter Sunday where we joined our neighbouring church of Holy Trinity for their dramatic Sunrise Service with Revd Sam Parker serving as Deacon.

**Coronation 'Come and Sing' Choral Evensong:** as we prayed for King Charles III as his Coronation approached including the singing of an inspirational 'Zadok the Priest'.

**Ordination to the Priesthood of the Revd Sam Parker** and his First Eucharist.

**The second-ever Pet Blessing Service (St Francis-tide):** following its successful launch in 2022 and drawing in many from the wider local community.



**Harvest Festivals:** both our regular Sunday Harvest service and Harvest thanksgiving for Marmalade Bear Nursery. Generous donations were made at both services for Earlsfield Foodbank.

**All Souls Bereavement service:** with special invitations to those families for whom the clergy had conducted funerals in recent years.

**Remembrance Sunday:** with Church Parade of cubs, scouts, guides and brownies.

**Advent Carols:** with beautiful singing from the Choir and uplifting readings.

**Christmas:** it was a joy to see the church filled at our 'regular offerings' of the traditional Christmas Carol and Nine Lessons service, the fun-filled Nativity from Scratch, Children's Crib service, Midnight Mass and Christmas morning services.

**New for 2023:** we were delighted to welcome Marmalade Bear Nursery, children, staff and families for their Nativity in church (rather than the Parish Hall).

We also took a leading role in the first-ever Christmas event in **Springfield Village** with the Choir carolling at the turning on of the Christmas Tree lights following Christmas songs by



Fircroft Primary School. The NHS Trust expressed their appreciation for the joyful contribution of the Choir and we plan to continue working together on other activities in Springfield Village in 2024.

## **Prayer**

A variety of opportunities to grow in the practice of prayer were offered in 2023 including:  
Daily offices on Mondays and Tuesday re-established;

Week of Prayer for Christian Unity;

For children: Saturday afternoon informal worship at Easter, Pentecost, in anticipation of Rev Sam's ordination and the blessing of Backpacks in September;

World Day of Prayer 2023 (Taiwan) and Prisons Week 2023; and

Multi-faith Peace ceremony at Tooting Broadway with leaders and members of other world faiths.

## **Pastoral care**

This was as important as ever in 2023 as we mourned the deaths of four beloved church members as well as the ongoing challenges of health, relationships, workplaces and community life. Wherever possible, the clergy met with people in church or at home to support and pray with them. Support for the bereaved was offered through funeral ministry and the Memorial Services held at SMM. The All Souls service in November 2023 with the reading of the names of loved ones who have died was an important time for bereaved families to gather to support one another and hear words of comfort through hymns, anthems, the homily and prayers. Pastoral care is also given in a myriad of ways by church members in often hidden acts of kindness and compassion both within the church and wider community.

## **Church music**

**Repertoire, Musicianship and Growth:** Although we love our special 'Carol Services' which sometimes find up to 30 singers, our success is more realistically measured Sunday by Sunday. We range in size from 8 at least to 16 on typical Sundays, with around 50 four-part harmony anthems under our belt now, and regularly tackle new anthems on a Sunday morning, increasingly confident that our strong hymn-singing requires little regular rehearsal. An example of this on 5<sup>th</sup> February 2023 was to learn SS Wesley's 5-part anthem 'Thou wilt keep him in perfect peace' starting at 9.15am. This level of challenge appears not to daunt our musicians, indeed perhaps keeps them coming back.

Under the careful tutelage of our Director of Music, Barry Holden, the choir continue to grow in musical confidence; diction, phrasing, blend, cantabile singing, accuracy of tuning and precision of attack which are some of the key technical aspects which together make a better-sounding choir. Huge thanks are due to singers who arrive every Sunday at 9.15am, often learning a new anthem before 9.45am. We benefit tremendously from having among us Keith Mitchell who often takes on the organ playing, allowing the Director of Music to stay out front and guide our musicians.



**Organ Replacement:** Thanks to the generosity of donors the longstanding goal of selecting and installing a new digital organ was achieved in 2023. The new organ is a two-manual draw-stop organ from Makin Organs. Its nine separate speakers have been carefully installed behind the pipework façade of the original organ and are entirely invisible. Although digital, the recent advances in digital sampling, combined with powerful amplification, combine to create a surprisingly realistic and powerful variety of colours. In particular, the nine separate amplifiers and woofer, each attached to specific stops, allow for genuine additional volume to be gained without loss of variety between the woodwind, string, reeds and diapason sections.

**Come-and-Sing Choral Evensong:** Our list has grown to sixty singers with each monthly event attracting about thirty singers. Our intensive rehearsal is followed by tea and cake before our Cathedral-style Evensong. This monthly event attracts additional singers into our orbit and allows our Sunday morning choir a chance to sing longer, more challenging works: that in turn stretches and develops their own technique beyond the limits of the short anthems appropriate for our 10am Sunday service. Singers also take time to socialise before the service for 30 mins over tea and cake and some repair after the service in time-honoured fashion to the Althorp.

**Come-and-Sing Events:** The first of these took place on 26<sup>th</sup> February when 170 voices came and sang Vivaldi's joyous 'Gloria' between 2pm and 445pm with 5pm Performance. The 175 participants at the ticketed event enjoyed an excellent tea and cakes, brilliantly marshalled by Sarah and Paul Henry with contributions too numerous to mention. Ben Lewis-Smith accompanied and soloists were led by former parishioner Jenny Esdaile who returned from her new home to sing.

We are very grateful to the many volunteers who bake cakes, do front of house and serve the delicious teas for which the church is rightfully developing a reputation at these events!

## **Teaching, baptising and nurturing new believers (MAP priority 2)**

**Lent Talks:** The Lent talks format returned in 2023 with three fascinating speakers. The Revd Dr Nadim Nassar spoke about 'Syria – the War and the Children we've forgotten; Isabel Losada, the joyful environmentalist, about 'Life, happiness and saving the planet'; and Her Honour Judge the Revd Sarah Whitehouse KC gave a talk on 'A Judge in the Pulpit and a Priest on the Bench'. The talks were of the highest quality and despite freezing winter weather, were well attended and appreciated by all who came.

**Confirmation course 2023:** the two confirmation candidates were joined by eight other young adults using the 'Sycamore' teaching materials for the first time. Seven sessions took place on Zoom with short videos and lively and thoughtful discussion.

**Advent course: 'Preaching for our Planet':** based on the book by Bishop Hugh Montefiore, this creative course on Zoom led by Susanne Mitchell, reflected how far we had come (or failed to come) in addressing environmental issues and the climate crisis in the past 30 years.



**Junior church:** Junior church is comprised a group of children aged between 2 and 10 years old. There are at least two leaders so that we can split the group and differentiate the activities accordingly. We focus on a variety of topics including stories from the Old Testament and learning about significant dates within the church calendar. We read the children a story or talk to them about the event in question and this is followed by fun adult led craft activities. This year Junior Church said goodbye to Joan Taylor who had retired from leadership after 78 years. In her time Joan had looked after too many children to count and even seen them return years later as parents. Our grateful thanks to Joan for all her dedicated and outstanding work in Junior Church and many thanks to Lucinda for picking up the mantle.

**Circle Time:** Since its launch back in October 2022, Circle Time continues to serve adults with babies and toddlers in and around Wandsworth Common. Sessions take place at the church on Wednesday mornings from 9.30am – 10.15am. We try to shape each week around a particular theme, but participants can always expect nursery rhymes, stories, and fun activities for little ones to enjoy.

We tend to welcome between 8-12 children each week, and we see a mixture of adults including parents, grandparents, relatives, and carers. Due to the increasing number of pews on wheels, we can now configure the space at the front of the church where we meet. Adults and children now have more space to interact and play, and we can also accommodate more people per session.

Although there are a selection of baby and toddler groups to choose from, Circle Time is a signal to the young families in our community that, as a church, we are here for them.

**Ukelele Club:** Ukulele Club launched in February 2023 as a fun opportunity for children in our community to connect and grow in their musical gifts. While Ukulele Club was primarily aimed at children aged 12 and under, we've also had interest from several grown-ups in our congregation who have wanted to learn. It's amazing how music draws different people of all ages and stages! More recently, we have been exploring both the ukulele and the guitar, and we are excited to blend the teaching of both instruments, depending on people's interests and preferences.

**Young Adult's Group:** The young adults group met four times in 2023 for informal fellowship, fun, and some fabulous food! These were great opportunities to get to know one another better, outside of our normal Sunday routine. In the Autumn, ten of us took part in the Sycamore course on Zoom ([www.sycamore.fm](http://www.sycamore.fm)). Over seven sessions, the course enabled us to explore the Christian faith and its relevance for life today. It also served as preparation for two people who were preparing for confirmation.

**Home Groups:** During 2023 our group continued to meet monthly for afternoon sessions of Bible study, accompanied by tea and cake. There are ten regular members of the group and over the twelve months we have followed a number of study books, including *Exploring God's Mercy*; *Five Images of Salvation* by Steven Croft and *Prayers of the Old Testament* by



Lynne M. Baab. We also had a session where we looked at art works that inspire us. In between sessions we keep in touch via a very supportive WhatsApp group.

**Men's Bible Briefing:** This is a fortnightly bible study session held in Caffè Nero at 7.30am. It lasts forty minutes so attendees have time to get to work. There is now a group of eight committed to attending. Individual circumstances prevent everyone from always being there and typically there are at least five at any one session. There is plenty of lively discussion and a strong spiritual bond develops within the group. Anyone who is interested is welcome to join.



**Baptisms, confirmation, weddings and funerals:** Twelve children and one adult were baptised in 2023, one wedding and a blessing were held and eight funerals were conducted either at the church or at local cemeteries and crematoria, as well as one memorial service.

### **Creating a welcoming and inspiring place of worship (MAP priority 3)**

St Mary Magdalene church buildings have stood at the heart of the Wandsworth Common community for over 150 years. As a Church of England church, it is here to serve not only regular worshippers but also all those who live within the parish bounds not least at time of joy with baptisms and weddings and times of sorrow with funerals and memorial services. Our aspiration continues to be to maintain and where necessary re-configure our buildings that they can serve the whole community with a range of life affirming and inspiring activities for all people including the most vulnerable. Following the work by Matthew Lloyd Architects in 2021/2022, Sian Newton of Craigmyle Fundraising Consultants was commissioned to produce a Funding Feasibility study which was presented to the PCC in January 2023. This revealed the significant challenges of major fundraising and also the opportunities and approaches that the PCC might embrace.

Meanwhile, smaller projects to enhance the buildings for wider community use have continued apace. These include the installation of a new organ, the installation of a new boiler in the Parish hall and final planning for the modification of further pews to make them 'moveable' and create more flexible spaces at the east and west ends of the church. Meanwhile a new welcome display was created in the church lobby, and the Eco Group continue to work on the solar panels project and creating a green 'eco-garden' at the front of the church.

### **Developing a range of inclusive activities in our buildings (MAP Priority 4(i))**

The following three activities are in addition to the many mentioned elsewhere in this report:



**Christmas Tree Festival:** On 11<sup>th</sup> December the church opened its doors for the 11<sup>th</sup> Christmas Tree Festival. The twenty-five beautifully decorated trees illuminated the church and visitors were able to enjoy the trees, visit Santa's Grotto, drink mulled wine and tea accompanied by delicious cakes, buy home produce and Christmas floral arrangements, take part in the children's activities, including watching the steam driven model railway, buy prize draw tickets and listen to the Beatrix Potter choir.

In addition to raising over £7000 for the Awareness Foundation, the Festival brought many visitors through our doors and we really appreciated the comments showing how embedded the Festival has become within the community. As one person said, 'it marks the start of Christmas for our family'. The Christmas trees remained on display during the Christmas period and so were seen by those attending the Finton House carol concerts and our own Christmas services.

A huge thank you to everyone who made the Festival possible. The trees, activities and Santa bags were sponsored by local businesses and church groups. There was an army of volunteers who helped put up and later dismantle the trees and provided mulled wine, teas, cakes, flowers, manned stalls, assisted Santa in the Grotto, sold prize draw tickets, entertained children and welcomed people on the door.

Thank you to the organising committee, Charlotte, Rowan, Phil and Ann. Particular thanks to Rowan and Phil this year as it will be their last year as part of the committee, they have made an outstanding contribution to the event and its continued success as a fixture in the local Christmas calendar.

**Winter Welcome:** In autumn 2022, we joined a partnership of six local churches to provide 'Warm Spaces' covering every weekday Monday to Saturday as part of the Wandsworth Borough Council initiative to support those struggling with the rising cost of living. This continued from January to March 2023. We covered Tuesday daytimes. Hot drinks, toasties, home-made soups and cakes were provided together with games, conversation, friendship and music. Leaflets, signposting and other advice were also available. Later in 2023, the Council advised that they would be focussing on after school and early evening 'warm space' provision. Our churches network regretfully concluded that we could not raise enough volunteers at that time of day to make opening possible, so our 'warm space' was suspended for 2023/24. We remain committed to finding ways to support those who are most vulnerable.

### **Exhibitions:**

**Holy Week banners:** these were created for the Churches Together Good Friday open air service in 2023 by community artist Jeni Walker-Lawes in collaboration with children and adults from the local community.



**The Tooting Tapestry** was displayed to mark Refugee Week 2023 and honour the contribution of those who have come to Tooting and Wandsworth from other parts of



the world. The Tapestry was facilitated by the local group 'Meet and Make Spaces'.

**Windrush 75** this exhibition curated by Revd Dorothy Penniecooke of Ascension, Balham, honoured the lives and contributions of those who had come to the UK on the Empire Windrush in 1948.

### **Strengthening links to existing SMM ministries in prison, hospital, care home and schools (MAP priority 4 (ii))**

**HMP Wandsworth:** Individual church volunteers continue to give invaluable support to the Chaplaincy team. St Mary Magdalene also joined with other local churches in making a 'Christmas Sock collection' for the men and an amazing 3,200 pairs of socks were distributed to prisoners at Christmas. The new prison timetable and staff shortages mean that the Bible study team are unlikely to return to in-person work in the prison in the foreseeable future. They continue to meet weekly as a team to study and pray for the prison and continue to contribute recordings of readings and intercessions for the Prison Radio station Radio Wanno.

**Springfield University Hospital:** After reviewing their volunteering experience the Springfield volunteers explored which would be the appropriate ward for them to visit and since early 2023 we have been visiting Jupiter Ward.

Our visits take place on Wednesday evenings and we play games including cards, dominoes and banagram, whilst we talk with service users. Our group comes under the umbrella of the Chaplaincy Team and so we have been named "CHAT" (Chaplaincy Activities Team). As most of the service users spend some time in Jupiter Ward over the weeks we are able to develop a rapport those who join us. We are very well supported by the Chaplaincy Team and feel welcomed by the staff and so our group feels both appreciated and that our volunteering is providing a useful service.

CHAT, together with other members of the congregation, has also gone carol singing and as a new innovation Easter singing, to some of the Springfield wards.

Volunteering at Springfield has also been supported by Revd Sam Parker's involvement. On a practical level Sam's accompaniment to our singing has been much appreciated and his work on Jupiter Ward has added a depth of knowledge to our visits there.

**The Meadowcroft:** It's taken a while, but the SMM Communion Team now calls Meadowcroft by its correct name (so difficult to abandon Ronald Gibson House!) and have settled, along with the residents, into the routine of this wonderfully smart looking new home.

Each month the band of attendees seems to grow. Residents, along with carers, family members and even the odd visiting family dog, swell the numbers, making it an exciting and vibrant extension of the SMM congregation. We now have the luxury of two priests, the Rev



Philippa Boardman and the Rev Sam Parker, who alternate visits and give the residents some really smashing sermons and services with simple, easy to grasp themes which the congregation really enjoy.

Music is supplied by Keith Mitchell or Marion Cahill on piano and it is touching to see how many hymns the residents can pull up from their memories. They never cease to amaze us. Wherever they are on their dementia journey, hymns and the Lord's Prayer are remembered, creating what the staff at Meadowcroft call 'Golden Moments'.



The loyal communion team from SMM help residents negotiate their hymn sheets and orders of service, then round off the visit with some lively conversation plus tea and cake. We rightly remain the hottest gig at Meadowcroft and even more popular than some entertainers!

Everyone is welcome to come along and join us for communion and cake and trust us it really is great fun. Never a dull moment!

### **Support for charities and other causes**

**The Awareness Foundation** ([www.awareness-foundation.com](http://www.awareness-foundation.com)) continued as the church's chosen charity 2021-2023. The Foundation is an international humanitarian charity driven by Christian values which builds peace through education and training.

In 2023, a new programme, PIONEERING WOMEN was added to their two core programmes, LITTLE HEROES and AMBASSADORS FOR PEACE aiming to equip and empower children and young people in Syria and Iraq to become agents of peace and reconciliation.

**Other causes:** The church continued to support a number of other charities including:

**Royal Trinity Hospice**, through the proceeds of Sunday after church coffee.

**Earlsfield Foodbank** through our collections at Harvest, weekly donations and volunteering by church members.

**Christian Aid Week** – through street collections by church volunteers and online giving.

**MacMillan Coffee morning:** with great support from the local community, and in memory of Dora Littlechild who ran the Coffee morning for many years and who died in 2023. The short film 'A History of Wandsworth Common' was also shown.

**Relationships with local schools and organisations:** We continued to build our relationships with local schools in 2023:

**Ernest Bevin Academy:**



**The Literacy Support programme** – church volunteers worked with over a dozen students, individually hearing reading 4 days a week from January to July. The format changed in September to a book group discussion with a further dozen students participating.

**Remembrance event:** over a hundred Year 7 and 8 students plus the Cadet Corps participated in this event, reading war poetry and exhibiting their creative writing which remained on display throughout December. There were lively intergenerational conversations with sixteen church members who attended, some of whom brought wartime memorabilia.

#### **Finton House:**

**Year Two visit** 54 children plus staff participated in their curriculum visit learning about Baptism and the unique features of a church building.

**Christmas services:** nearly 300 children and a similar number of families, school staff and governors participated in their two Christmas carol services at the church.

#### **Marmalade Bear Nursery:**

**Harvest service** – with generous donations to Foodbank.

**Remembrance service** – with prayers for peace.

**Nativity play** – the first time this had been held in church enabling many more families to attend.

#### **8th Upper Tooting Girlguiding Units:**

2023 was the year when life mostly seemed to return to some sense of normality at least for Brownies & Guides. Our weekly meetings include a variety of activities, games and badge-work with the girls involved in the choices. Brownies choose which badges they'd like to complete and the Guides choose, plan and execute the activities with in the summer a BBQ evening & fete for the parents at which the Brownies ran a tombola and Guides a mocktail bar and ice-cream parlour.

At Our World Thinking Day celebration it was announced that Barbara had been awarded the Laurel Award, the second highest award in Guiding. Two Guides were awarded Jack Petchey Awards and four of our older Guides are working hard to complete the Gold award, the top award they can achieve, one which requires considerable commitment.



## Energising and being active in our care of creation (MAP priority 5)

### Eco Church Group

In January the Christian Aid film on climate justice was shown as part of the Week of Prayer for Christian Unity activities arranged by Churches Together. Isabel Losada, The Joyful Environmentalist, was one of our Lent speakers. The Jumble Sale was again promoted as a recycling opportunity. Second hand books gifted in return for donations was a similar activity. St Mary Magdalene was represented at the packed-out service at St John's Waterloo in April to give thanks for Eco Church and Southwark becoming an Eco Diocese. A couple of us visited the Centre for Wildlife Gardening in East Dulwich for inspiration. The year closed with an Advent course revisiting some of Bishop Hugh Montefiore's sermons 'Preaching for our Planet' and the Eco tree at the Christmas tree festival. This year it featured a golden sun powering little solar panels to underline our intentions for 2024!

As with 2022 our most joyful progress has been at the front of the church building. The rain butt proved its worth but we must remember to clean the filter from time to time! New planters have been added and a green painted 'A' frame pallet now gives more display space. We were grateful for some ivy plants from the marvellous floral decoration for Alicia and Oliver's wedding in October. A long-term Balham Park Road resident gifted her pot of lilies. We reminded folk that weeds are only wild flowers and many provide food for bees and other insects and so we try to let things flower before we over tidy. We have applied to install a cycle rack and The Best Exotic Magdalene Bug Hotel is already a new feature.

We are now a registered Fairtrade Church which means all tea, coffee and sugar used on the premises is fair trade. Sales of The Real Advent Calendar, the Christmas Blessing bars and The Real Easter Eggs were also part of this. Our Communion wine is a third strand to our Fairtrade bow.



During the year we reviewed the Eco Church survey noting what progress has been made and what further steps we might take in the short term to achieve silver. We score very highly in Preaching and Teaching, in Community and Global Engagement and in Lifestyle. It is Buildings and, despite all our garden efforts, Land that we need to work on. We are not short of ideas. Thank you for all the support so many of you give. We have plenty of ideas so watch out for Eco tips in the pews sheet and **do get involved.**



## PCC's Financial Report for 2023

The accounts show the continuing generosity of all who are connected with the church and particularly this year in the specific and additional giving which enabled us to replace the church's digital organ.

We report by three different types of fund: unrestricted, designated and restricted with each having different aims and reasons for being in our accounts.

**Restricted funds:** These are given or raised for a specific purpose and balances retained until used for that purpose only. In 2023 the significant fundraising was for the new digital organ with £35,472 raised for that purpose, which was then spent in 2023. A new restricted fund for work with children and young people was started in the year as part of the celebration of Joan Taylor's service as leader of Junior Church. The Roof and Fabric fund also received monies for church linen and fabric – part of which was given in celebration of Richard Sweet's Reader ministry – and the surplus on the "Come and Sing Vivaldi's Gloria" (to be used for enhancing our performance space and kit).

**Designated funds:** These are more flexible in that the PCC decides to create, add to or use these funds – of which there are now four. Those for Maintenance and West Window works are historic; that for MAP projects was started in 2022 and has been added to in 2023. A new fund: "Re: Capitalised Assets" has been created to reflect the accounting treatment of the purchase of the new organ as a fixed asset to be depreciated over 10 years – this fund will cover the depreciation costs of the next 9 years.

**Unrestricted funds:** These are the day to day income and running costs of the charity. Income on these funds alone was £184,913, some £19,000 increase over 2022 with notable increases in tax efficient giving and tax rebates due, jumbles, interest earned and open collections. A £3,000 grant from Wandsworth Borough Council relating to Warm spaces was received in 2023.

Expenditure increased by £11,000 over 2022 levels, giving an increased surplus in 2023 of £20,839. The main increase in expenditure related to the Halls with the increased cost of utilities and provision for professional fees connected to the licences of some users. The largest item of expenditure continues to be the Parish Support Fund paid to the Diocese so they can pay the employment costs (including housing, pension contributions, training and professional support) of all the stipendiary clergy in the Diocese. We continue to be generous in our support.

After the transfer of £7,500 to the MAP projects designated fund, the PCC unrestricted funds increased by £13,339 in 2023. The accumulated surpluses over past years now stands at £83,061; giving a good level of reserves for the future activities of the PCC.

**Balance Sheet treatment of the new organ:** The balance sheet now includes the purchase in the year of a new Makin Digital organ for £42,545 less a year's depreciation charge of £4,254 under the new accounting policy for depreciation relating to a single item of equipment costing over £10,000. The net value of £38,291 is matched by the new designated fund and these will both decline in tandem over the next 9 years.

**Charitable Giving:** Also reported in the accounts is the generosity of support for other charities. The Awareness Foundation received the surplus of the Christmas Tree Festival of



£7,048 and other specific collections at the “Come and Sing Vivaldi’s Gloria” and the first of the 2023 Lent talks. The PCC also resolved to donate £250 of this pot of money to DEC towards their work in Turkey following the earthquake in 2023 – recognising that The Awareness Foundation was already working in Syria following that earthquake which impacted both countries. Money was also collected for and sent to Christian Aid, Children’s Society and Royal Trinity Hospice.

## **Buildings**

The maintenance of St Mary Magdalene Church and Halls is a largely hidden yet vital service in the life of the church. This work is essential if we were to keep to our overriding aim of ensuring that the buildings are warm, dry and safe, and making sure that St Mary Magdalene remains at the heart of the Wandsworth Common community for generations to come.

The yearly maintenance schedule is vital in ensuring that there are comprehensive checks including PAT testing, boiler servicing and the regular clearance of gutters and downpipes. Thankfully there was limited water ingress during the year apart from into the Flower Room whose roof is in effect a large sink that receives the water from several drainpipes coming from the main roofs that then flows via a downpipe within the Flower Room. This means that if the Flower room drain in the roof of the Flower Room is blocked, a large volume of water can quickly build up. Thought is currently being given to whether this can be reconfigured in any way to mitigate this risk. General cleaning of gutters and removal of foliage from the roofs and box gutters is a regular task for the volunteer church maintenance team.

Various electrical works were undertaken during the year. These included replacing bulbs in the Parish Hall and Church but it should be noted that much of the current installations are life expired. A more extensive replacement programme with lower energy costs, is planned for 2024.

There were also a number of general repairs and annual servicing arising during the year. These included replacing some life expired Fire Extinguishers, improved draft proofing, upgrading storage cupboards and minor decorating tasks.

The ‘Maintenance Crew’ of church volunteers visited the church individually and met on numerous occasions to carry out a myriad of other repairs.

During 2023, three larger projects were undertaken:

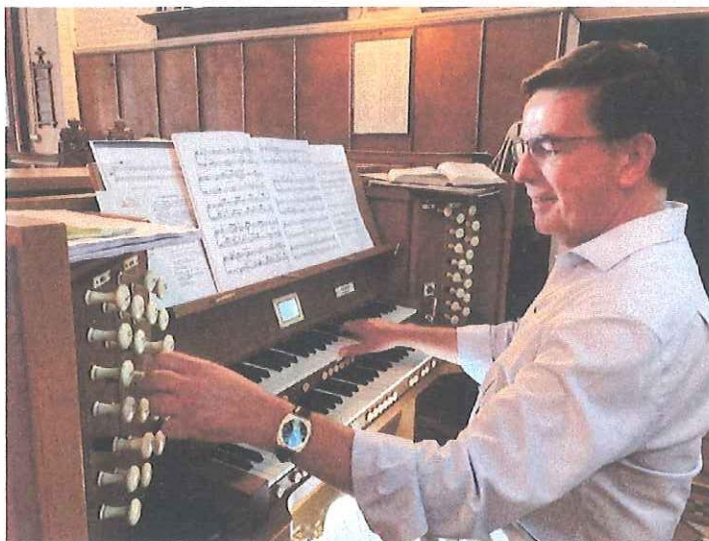
### **1. The installation of a new gas boiler in the Parish Hall**

The situation regarding heating the Church Hall had become more acute as the boiler was ageing and had become unreliable over the winter of 2022-23. An options appraisal had been undertaken including heat pumps, infra-red heaters and mats, repairing the existing



boiler and buying a brand new one. While the 'green' options were attractive, it was considered that this technology was in its early days and did not give the reliability that we needed especially with the 50+ small children using the Nursery each weekday. The recommendation of a new boiler – the Worcester Greenstar 8000 Style 35kW Heater was the only pragmatic and reliable course of action available at the current time. But it was noted that should a cost effective and practical eco solution become available in the future then the PCC could choose to take such a course of action and use the Worcester Boiler as a back- up solution.

## **2 The installation of a new organ:**



The previous electronic organ, a Johannes Opus 5, was installed in 1989/1990, and served the church well, but by 2023 had 'outlived its shelf life' of a recommended 25 years. 'Church Organ World' installed a 'demo' organ - the Makin Thirlmere 2-30D Drawstop Console – in July 2023 which was played at services throughout the month. An interim Faculty was granted by the Chancellor. The old organ was removed and the new organ was installed in September 2023. It has been warmly appreciated by

organists, choir and congregation.

## **3 Planning and preparation for further modification of pews to make them 'moveable':**

*(actual works to begin in January 2024)* Following the success of the 2018 plan to put eight pews on casters, arrangements were put in place to make a further eleven pews 'moveable' creating further flexibility at both the east and west ends of the church for recitals, 'Come and Sing' events, Circle Time and receptions following weddings, funerals and memorial services. The castors can be raised to enable the lifted pew to be wheeled to another location and then retracted to set the pew firmly down on its existing feet. Repairs to the Victorian tiles and woodblock, and cleaning and treating of floor where the pews have been fixed is also proposed. The total space created by the proposals would be 92 square meters at the rear west end and 43 square meters at the east end of the church.

David Coleman who chaired the Church Maintenance Committee for many years stepped down in May 2023. David worked tirelessly on projects large and small, organising working parties, meticulous in planning and marshalling documentation including Faculty applications, as well as graciously responding to emergencies at very short notice. We are immensely grateful to him and express our heartfelt thanks.



We record with great sadness the death of Mr Roderick MacLennan, in July 2022. Roderick served as our Church Architect from 2016-2021. May he rest in peace.

## Safeguarding

The two new Safeguarding officers have now completed one year and have set a new safeguarding plan which aims to *'enthuse the congregation about safeguarding issues and ensure safeguarding is an integral part of the DNA of Saint Mary Magdalene Church.'*

With this in mind, church Safeguarding Officers are continually updating DBS checks, registering Junior Church members and encouraging PCC members and sides persons to attend safeguarding courses run by the Diocese. Furthermore, we are doing more to encourage deeper conversations for all who volunteer and serve at church to consider how we ensure that church is always a welcoming and safe space, especially for those who are vulnerable in our community.

The diocese has expanded the Safeguarding support on offer over the last year, and the Safeguarding officers and one of the church wardens attended a Safeguarding leadership training which culminated in designing a reformed plan of action for safeguarding in the church.

In 2023 the two new Safeguarding Officers (PSOs), Ann Carrington Brook and Charlotte Flowers began with Safeguarding introduction training, and created a Safeguarding action plan for 2023 which included reviewing existing work, renewing displays and creating new systems for data storage, DBS and training monitoring and email.

### Actions taken:

PSOs have attended Safeguarding leadership training alongside one of the church wardens. Updating of safeguarding details have been displayed in the entrance, in both halls and also the toilets (it was felt that, while having those details in the entrance was a good idea, but placing them in a totally private place was essential). We have also ensured all details and referral links are added to the SMM website.

Ensured the new Junior Church leaders, as well as other volunteers had relevant DBS checks and that church leadership renewed all relevant trainings.

Worked with new Junior church leaders to create register system to ensure good data recording of all activities.

Encouraged all PCC members to complete the three relevant online trainings and Junior Church leaders and volunteers to complete training.

Challenges for 2023 remain as they were:



To encourage new sides persons and interested members of the congregation to attend safeguarding online courses or together at church; and

To keep all DBS checks up to date and renew where necessary, plus ensure newly introduced disclosure forms are completed and the Safer Recruitment protocol followed. To check that all major events are risk assessed for safeguarding and that the assessments go on file.

People having any concerns about the safety of children or vulnerable adults, are always requested to speak to our Safeguarding Officers, Ann or Charlotte, directly. Their contact details are on the church safeguarding noticeboard in the church entrance or on the SMM website. They can also be emailed at [safeguarding@smmwandsworth.org.uk](mailto:safeguarding@smmwandsworth.org.uk).

The PCC has complied with the duty under section 5 of the Safeguarding and Clergy Discipline Measure 2016 (duty to have regard to the House of Bishops' guidance on safeguarding children and vulnerable adults).

## **The Duties of the PCC**

### **How the PCC works and our congregational volunteers**

Much of the day-to-day work of the PCC is usually delegated to various groups, but the PCC retains the responsibility for receiving reports from these groups and for taking all major decisions at its regular meetings. The principal groups to which the PCC has delegated authority are:

Standing Committee (which prepares the agenda for PCC meetings and which is authorised to transact the business of the PCC between meetings)

Finance and Risk Committee

Buildings Management Committee

### **Further information**

**Constitution:** The Parochial Church Council of the ecclesiastical parish of St Mary Magdalene, Wandsworth Common is a corporate body established by the Church of England. It operates under the Parochial Church Council Powers Measure and is a registered charity, registered with Charity Number 1140530.

**Address:** St Mary Magdalene, Wandsworth Common is situated on Trinity Road, London, SW17 7HP. It is part of the Diocese of Southwark (Kingston Episcopal Area) within the Church of England. The address for correspondence is the Parish Office at 10a Wiseton Road, London, SW17 7EE.



**Electoral Roll:** The number on the electoral roll as of 31<sup>st</sup> December was 168 persons, 4 people were removed from the roll during the year and 20 were added.

**Church attendance:** The annual churchwarden's count undertaken in 2023 showed an average attendance of 75 adults and 6 children.

**PCC Meetings:** During 2023 there were seven ordinary meetings of the PCC (2023: 7). All meetings of the PCC were held face to face. 75 % of PCC members on average attended these seven meetings (2022: 80%).

**Members of the PCC:** The method of appointment of PCC members is set out in the Church Representation Rules. At St Mary Magdalene the membership of the PCC consists of a) the incumbent Vicar and other licensed clergy, b) the Churchwardens, c) the reader, d) the lay representatives of the parish elected to the Tooting Deanery Synod and e) lay members. In the case of d) and e), these are elected by those members of the congregation who are on the electoral roll of the church or co-opted to the PCC. All those who worship regularly at St Mary Magdalene are encouraged to register on the electoral roll and stand for election to the PCC.

After the May APCM, the PCC consisted of:

**Chair:** Revd Philippa Boardman

**Curate:** Revd Sam Parker

**Churchwardens:** Tom Roberts; Jane Cooper

**Deanery Synod Representatives:** Nicola Pattinson and Nicholas Higton

**Elected members of the PCC:** Alicia Birchall; Graham Dick, Charlotte Flowers, Matthew Heard, Veronica Mills, Keith Mitchell (until May 2023), Richenda Tonge

**Co-opted members:** (from June 2023), Charles Congdon, Keith Mitchell, Sarah Parsons.

**Officers elected by the PCC during 2023:**

**Vice Chair:** Tom Roberts

**Treasurer:** Keith Mitchell

**Secretary:** David Coleman (until May) and Sarah Parsons (from June)

**Electoral Roll Secretaries:** Georgina Child and Carolyn Chambers

**Deputy Churchwarden:** Nicholas Higton



**Safeguarding Officers:** Ann Carrington Brook and Charlotte Flowers

**Members of the Standing Committee:** Revd Philippa Boardman, Tom Roberts, Jane Cooper, Keith Mitchell, David Coleman (until May) Sarah Parsons (from June)

**Sides people:** Barbara Littlechild (head sides person), John Ager, Alison Blair, Ruth Bowdage, Lucinda Byron-Evans, Carolyn Chambers, Alex Cox, Graham Dick, Charlotte Flowers, Jill Gould, Nick Higton, Veronica Mills, Maha Nassar, Jane Ogram, Nicola Pattinson, Serena Perkins, Gabrielle Richards, Jake Stratton, Joan Taylor, Michael Taylor, Lynn Tilling and Nick Wood

**Members of the Buildings Maintenance Committee:** Nicholas Higton, Hugh Birchall  
Serena Perkins and David Coleman (until May 2023) Robin Gisby (from May 2023)

**Members of the Finance and Risk Committee:** Keith Mitchell, Nick Higton, Jane Player, Alicia Birchall and Andrew Beney

**Members of HMP Wandsworth Bible Study Group:** Olivia Pethybridge, Peter Carpenter, Serena Perkins, Huda Nassar, Alicia Birchall, Veronica Mills and Tom Roberts

**Members of Springfield Hospital CHATS (Chaplaincy Activities Team) Group:** Rosemary Birchall, Mary Broderick, Ann Carrington Brook, Graham and Katie Dick, Jill Gisby, Matthew Prescod, Louisa Russell, Richard Sweet and Richenda Tonge

**The Meadowcroft Wednesday communion volunteers:** Revds Philippa Boardman and Sam Parker, Pat Crosswell, Marion Cahill, Jane Cooper, Lynn Tilling, Rosie Tilling, Joyce Mason, Nell Wells, Doreen Bush and Susanne Mitchell

**Ernest Bevin Academy volunteers:** Mary Brodrick, Sophie Bull, Susanne Mitchell, Ruth Bowdage (until Sept 2023), Callum Johnston, Stephanie MacKrell (from Sept 2023)



## Report of the Deanery Synod 2023

Meetings were held, on 1st February at St Mary's Summerstown, 19th June, at Ascension Balham (Synod service with Bishop Martin of Kingston), 20th September at St Nicholas Tooting and 16th November, at St Alban's Church.

At the February meeting, prior to the forthcoming March meeting of Southwark Diocesan Synod when the issue of fossil fuel investment would be debated, two speakers were invited. The Revd Hugo Foxwood wants Southwark diocese to ensure that money is invested in funds that have ethical criteria and therefore avoid investing in funds related to fossil fuels. Nick Burt, Chair of the Diocesan Policy and Finance, spoke as an individual to provide information rather than on behalf of the Diocesan board of finance. At the end of the discussion, Deanery Synod voted in favour of the motions proposing that the diocese should divest of investments in fossil fuels by the end of 2024. Other deaneries had put forward similar motions to the diocese.

In June we welcomed Bishop Martin to the Tooting Deanery. There was a service and light supper and a chance to hear from and speak with Bishop Martin.

The new triennium began in 2023 and for SMM, Nicola Pattinson remained as a member of the deanery synod and Nic Higton began his term as a member.

Southwark Vision 2023-2035 and the Diocesan Investment Programme (DIP). This document was circulated prior to the September meeting when it was discussed. Feedback both from individual responses and from the discussion, was then passed on to the diocese. This was an important opportunity for the Deanery to influence future planning in the diocese.

In the November meeting, in advance of the 'Season of Lay Ministries' being promoted by the diocese in January 2024, 'Lay Ministry and Service' was the focus of the meeting. We discussed ways of encouraging and celebrating lay service in our churches.

Across the year our lay representative Rosemary Wilson kept us informed about General Synod. The Deanery continues to build a network of eco church contacts.



## St Mary Magdalene – Wandsworth Common

### Statement of Financial Activities for the year ended 31<sup>st</sup> December 2023

	Unrestricted Funds £	Designated Funds £	Restricted Funds £	Total £	Total 2022 £
<b>Incoming Resources</b> <i>(Notes 2&amp;3)</i>					
Income from donors	106,786	-	40,067	146,853	101,395
Other voluntary income	6,122	-	-	6,122	6,827
Government grants	3,000	-	-	3,000	-
Income from operations	64,209	-	1,252	65,461	68,556
Income from investment	4,796	-	-	4,796	1,359
<b>Total income</b>	<b>184,913</b>	<b>-</b>	<b>41,319</b>	<b>226,232</b>	<b>178,137</b>
<b>Resources Expended</b> <i>(Notes 2&amp;3)</i>					
Costs of generating funds	200	-	-	200	90
Work of the Church	129,913	-	-	129,913	130,692
Church Management & Administration	3,742	-	-	3,742	3,281
Other expenditure	30,219	4,254	1,700	36,173	25,054
<b>Total expenditure</b>	<b>164,074</b>	<b>4,254</b>	<b>1,700</b>	<b>170,028</b>	<b>159,117</b>
Net incoming/(outgoing) resources	20,839	(4,254)	39,619	56,204	19,020
Balances at 1st January 2023	69,722	50,000	42,566	162,288	143,268
Transfer between funds	(7,500)	50,045	(42,545)	-	-
<b>Balances at 31<sup>st</sup> December 2023</b>	<b>83,061</b>	<b>95,791</b>	<b>39,640</b>	<b>218,492</b>	<b>162,288</b>

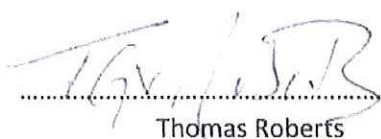


St Mary Magdalene – Wandsworth Common

Balance Sheet at 31<sup>st</sup> December 2023

		2023	2022
		£	£
<b>Fixed Assets</b>	<i>Note</i>		
Tangible fixed assets, at cost less depreciation	4	38,291	-
<b>Current Assets</b>			
Debtors	5	17,328	18,366
Short term deposits		145,290	102,583
Cash at bank and in hand		30,941	49,682
Petty cash		267	267
		<u>193,826</u>	<u>170,898</u>
Less:			
<b>Liabilities</b>			
Creditors falling due within one year	6	<u>13,625</u>	<u>8,610</u>
Net current assets		180,201	162,288
<b>Total Net Assets</b>		<u>218,492</u>	<u>162,288</u>
<b>Funds</b>			
<b>Unrestricted Funds</b>		83,061	<u>69,722</u>
Designated Funds	3A		
Maintenance Fund		30,000	30,000
West Window Fund		10,000	10,000
MAP Projects Fund		17,500	10,000
Re: Capitalised Assets		<u>38,291</u>	-
		95,791	<u>50,000</u>
<b>Restricted Funds</b>	3B	39,640	42,566
		<u>218,492</u>	<u>162,288</u>

Approved by the Parochial Church Council on 10 April 2024 and signed on its behalf by:

  
Thomas Roberts

  
Jane Cooper





**St Mary Magdalene – Wandsworth Common**  
**Notes to the Accounts for year ended 31<sup>st</sup> December**  
**2023**

**1 Accounting Policies**

The Accounts have been prepared in accordance with the Church Accounting Regulations 2006 together with applicable accounting standards and the SORP 2015.

The Accounts have been prepared under the historical cost convention. The Accounts include all transactions, assets and liabilities for which the PCC is responsible in law. They do not include the accounts of other church groups that owe affiliation to another body, nor those that are informal gatherings of Church members.

**Funds**

*Restricted funds* represent (a) income from trusts or endowments which may be expended only on those restricted objects provided in the terms of the trust or bequest and (b) donations or grants received for a specific object or invited by the PCC for a specific object. The funds may only be expended on the specific object for which they were given and any balance remaining unspent at the end of each year must be carried forward. The PCC does not invest separately for each fund.

*Unrestricted funds* are general funds which can be used for the PCC ordinary purposes.

*Designated funds* are general funds that have been set aside by the PCC for particular purposes. The aim and use of the designated funds is set out in the notes to the financial statements.

**Incoming Resources**

Planned giving, collections and donations are recognised when received. Tax refunds are recognised when the incoming resource to which they relate is received. Grants and legacies are accounted for when the PCC is legally entitled to the amounts due. Interest and all other income are recognised when they are receivable. All income resources including funds raised by sales and events are accounted for gross.

**Resources Expended**

Grants and donations are accounted for when they are paid over, or when awarded, if that award creates a binding obligation on the PCC. The Parish Support Fund is accounted for when due. All other expenditure is generally recognised when it is incurred and is accounted for gross.



## **St Mary Magdalene – Wandsworth Common**

### **Notes to the Accounts for year ended 31<sup>st</sup> December 2023 (continued)**

#### **Fixed Assets**

Consecrated and benefice property is not included in the accounts in accordance with s96(2)(a) of the Charities Act 1993.

Moveable church furnishings held by the vicar and churchwardens in special trust for the PCC and which require a faculty for disposal are inalienable property, listed in the church's inventory, which can be inspected. For anything acquired before 2000 there is insufficient cost information available and therefore such assets are not valued in the Accounts.

Equipment used within the church premises is depreciated on a straight line basis; individual items of equipment costing over £1,000 over a period of four years and individual items costing over £10,000 over a period of ten years. Individual items of equipment with a purchase price of £1,000 or less are written off when the asset is acquired.

#### **Parish Hall**

The Parish Hall is approximately 100 years old. It is an integral part of the church building and is not considered to have a separate identity which could have been consecrated or which can be individually valued.

#### **Current Assets**

Amounts owing to the PCC at 31<sup>st</sup> December in respect of fees, rents, taxes due or other income are shown as debtors less provision for any amounts that may prove uncollectible.

Short term deposits include cash held on deposit either with the CBF Church of England Funds or at the bank.

# St Mary Magdalene – Wandsworth Common

## Notes to the Accounts for year ended 31<sup>st</sup> December 2023 (continued)

### 2A Unrestricted Funds

	2023		2022
	£	£	£
<b>Income from Donors</b>			
Church open collections	13,111		11,472
Tax efficient giving (including stewardship)	73,947		67,756
Tax rebates received and due	19,728		17,767
		106,786	96,995
<b>Other Voluntary Income</b>			
Fees	2,477		1,788
Donations and bequests	3,645		2,539
		6,122	4,327
<b>Government grants</b>		3,000	-
<b>Income from Operations</b>			
Trading			
Use of photocopier	40		42
Bookstall	-		-
	40		42
Fund Raising			
Jumble sales ( <i>Note 2B</i> )	4,186		1,799
Other fundraising	77		-
Quiz Nights	-		1,276
Parish hall lettings	59,906		60,204
		64,209	63,321
<b>Income from Investments</b>			
Interest:			
On deposits		4,796	1,359
<b>Total income</b>		<b>184,913</b>	<b>166,002</b>



**St Mary Magdalene – Wandsworth Common**

**Notes to the Accounts for year ended 31<sup>st</sup> December 2023 (continued)**

**Resources Expended**

**Cost of Generating Funds**

	2023	2022
	£	£
Fund Raising ( <i>Note 2B</i> )		
Jumble sales	200	90
<b>Activities Directly Related to the Work of the Church</b>		
Parish Support Fund	96,900	95,000
Clergy expenses and housing	11,601	6,441
	<u>108,501</u>	<u>101,441</u>
Church and services		
Choir and organ	2,723	2,423
Mission and Worship	1,238	1,634
Communication	685	-
	<u>4,646</u>	<u>4,057</u>
General running expenses		
Heat and light	4,877	3,859
Insurance	3,600	3,653
Repairs and maintenance	8,289	17,552
	<u>16,766</u>	<u>25,064</u>
	129,913	<u>130,562</u>
<b>Church Management &amp; Administration</b>		
Administration	1,611	1,216
Examiner's fee	360	360
Parish Office	1,192	1,099
Photocopier maintenance	381	371
Bank charges	198	235
Depreciation (note 4)	-	-
	<u>3,742</u>	<u>3,281</u>
Resources expended carried forward	<u>133,855</u>	<u>133,933</u>

## St Mary Magdalene – Wandsworth Common

### Notes to the Accounts for year ended 31<sup>st</sup> December 2023 (continued)

	2023	2022
	£	£
Resources expended brought forward	133,855	133,933
<b>Other Expenditure</b>		
Parish Hall expenses	30,219	18,754
Total payments	<u>164,074</u>	<u>152,687</u>
Surplus / (deficit) of receipts over payments	20,839	13,315
Unrestricted funds at 1 <sup>st</sup> January 2023	69,722	66,407
Transfer to Designated Funds ( <i>Note 3A</i> )	(7,500)	(10,000)
<b>Unrestricted funds at 31<sup>st</sup> December 2023</b>	<u>83,061</u>	<u>69,722</u>

#### 2B Trading / Fund Raising

Net income from Jumble Sales £3,986.



## St Mary Magdalene – Wandsworth Common

### Notes to the Accounts for year ended 31<sup>st</sup> December 2023 (continued)

#### 3A Designated Funds

##### Movement of designated funds

Fund	Balance at 01.01.23 £	Transfers £	Expenditure £	Balance at 31.12.23 £
Maintenance Fund	30,000	-	-	30,000
West Window Fund	10,000	-	-	10,000
MAP Projects Fund	10,000	7,500	-	17,500
Re: Capitalised Assets	-	42,545	4,254	38,291
Total Designated Funds	50,000	50,045	4,254	95,791

#### 3B Restricted Funds

##### Movement of restricted funds

Fund	Balance at 01.01.23 £	Income £	Expenditure / Transfer £	Balance at 31.12.23 £
Roof and Fabric	28,670	3,431	1,463	30,638
Organ	7,310	35,472	42,782	-
Children and young people	-	1,481	-	1,481
Sewing	163	-	-	163
Chair	90	-	-	90
Rood Screen	1,160	-	-	1,160
Servers	937	-	-	937
War Memorial Maintenance	35	-	-	35
Music Fund	1,870	935	-	2,805
Accessibility Fund	2,331	-	-	2,331
Restricted Funds	42,566	41,319	44,245	39,640

# **St Mary Magdalene – Wandsworth Common**

## **Notes to the Accounts for year ended 31<sup>st</sup> December 2023 (continued)**

### **4 Fixed Assets**

	<b>2023</b>	<b>2022</b>
	£	£
Purchase of Makin Thirlmere Digital Organ in year	42,545	-
Depreciation of Digital organ in year	(4,254)	-
	<u>38,291</u>	<u>-</u>

### **5 Debtors**

	<b>2023</b>	<b>2022</b>
	£	£
Tax rebates due	17,290	18,366
Debtor re VAT	38	-
Sundry debtors	-	-
	<u>17,328</u>	<u>18,366</u>

### **6 Creditors**

	<b>2023</b>	<b>2022</b>
	£	£
Marmalade Bear Nursery School	3,000	3,000
Rental deposits	1,762	1,812
Examiner's fee	360	360
Diocesan Fees payable	-	206
Sundry creditors	8,503	3,232
	<u>13,625</u>	<u>8,610</u>



## St Mary Magdalene – Wandsworth Common

### Notes to the Accounts for year ended 31<sup>st</sup> December 2023 (continued)

#### 7 Money held in Trust - Charity Projects Fund

The Charity Projects Fund does not form part of the accounts and is only included here to show monies received for and paid to other charities.

Charity Projects Fund income and expenditure:

	2023	2022
	£	£
Balance brought forward from prior year:	360	381
Specific collections	2,736	2,884
Other income	25	28
Christmas Tree Festival	9,360	10,733
less expenditure	<u>2,312</u>	<u>3,024</u>
	7,048	7,709
<b>Total available to distribute</b>	<b>10,169</b>	<b>11,002</b>
Donations paid and payable		
Christian Aid ( <i>Note 1</i> )	-	-
Children's Society	216	52
DEC Ukraine	-	1,350
DEC Turkey Syria Earthquake	250	
Trinity Hospice	746	811
Awareness Foundation	8,822	7,709
Salvation Army	-	335
Mayor's Charities	-	373
Royal British Legion	<u>-</u>	<u>12</u>
<b>Total donations made</b>	<b>10,034</b>	<b>10,642</b>
	<b>135</b>	<b>360</b>
Less		
Bank charges	1	-
<b>Balance carried forward</b>	<b><u>£134</u></b>	<b><u>£360</u></b>

#### Notes

- 1 In addition, with Gift Aid, £4,071 was raised and sent directly to Christian Aid.





**Independent Examiner's Report to the Parochial Church Council of St Mary Magdalene Church,  
Wandsworth Common**

I report on the accounts of the PCC for the year ended 31 December 2023, which comprise the Statement of Financial Activities, the Balance Sheet and associated Notes.

**Respective responsibilities of the Trustees and Independent Examiner**

As members of the Parochial Church Council, the Trustees are responsible for the preparation of the accounts. They consider that an audit is not required for this year under section 144(2) of the Charities Act 2011 (the 2011 Act) and Regulations 3 (c) and 4 of the Church Accounting Regulations 2011 and that an independent examination is needed.

It is my responsibility to:

- examine the accounts under section 145 of the 2011 Act and Regulations 3(c) and 4 of the Church Accounting Regulations 2011;
- follow the procedures laid down in the General Directions given by the Charity Commissioners under section 145(5)(b) of the 2011 Act and
- state whether particular matters have come to my attention.

**Basis of Independent Examiner's Statement**

My examination was carried out in accordance with the General Directions given by the Charity Commission.

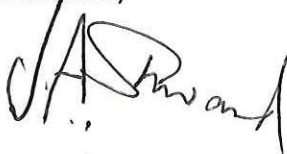
An examination includes a review of the accounting records kept by the PCC and a comparison of the accounts presented with those records. It also includes considering any unusual items or disclosures in the accounts and seeking explanations from the Trustees concerning any such matters. The procedures undertaken do not provide all the evidence that would be required in a full audit, and consequently I do not express an audit opinion on the accounts.

**Independent Examiner's Statement**

In connection with my examination, no matter has come to my attention:

- (1) which gives me reasonable cause to believe that in any material respect the requirements:
  - to keep accounting records in accordance with section s.130 of the 2011 Act and Regulations 3(c) and 4 of the Church Accounting Regulations 2011 or
  - to prepare accounts which accord with accounting records and to comply with the requirements of the Act, as also contained in the Church Accounting Regulations 1997 have not been met; or
- (2) to which, in my opinion, attention should be drawn in order to enable a proper understanding of the accounts to be reached.

Yours sincerely



J A Steward  
12 April 2024