

REGISTERED COMPANY NUMBER: 07404469 (England and Wales)
REGISTERED CHARITY NUMBER: 1139747

REPORT OF THE TRUSTEES AND
UNAUDITED FINANCIAL STATEMENTS
FOR THE YEAR ENDED 31 JULY 2025
FOR
MELTON LEARNING HUB

Duncan & Toplis Limited
26 Park Road
Melton Mowbray
Leicestershire
LE13 1TT

CONTENTS OF THE FINANCIAL STATEMENTS
FOR THE YEAR ENDED 31 JULY 2025

	Page
Reference and Administrative Details	1
Report of the Trustees	2 to 22
Independent Examiner's Report	23
Statement of Financial Activities	24
Balance Sheet	25
Cash Flow Statement	26
Notes to the Cash Flow Statement	27
Notes to the Financial Statements	28 to 36

MELTON LEARNING HUB

**REFERENCE AND ADMINISTRATIVE DETAILS
FOR THE YEAR ENDED 31 JULY 2025**

TRUSTEES	S E Butcher (resigned 23.8.24) D F Clements L M Moore P M Posnett Chairperson P Saxby Vice Chair S W Taylor K M Theobald P C Treadwell R Whittingham
REGISTERED OFFICE	Melton Learning Hub Burton Road Melton Mowbray Leicestershire LE13 1DJ
REGISTERED COMPANY NUMBER	07404469 (England and Wales)
REGISTERED CHARITY NUMBER	1139747
INDEPENDENT EXAMINER	Duncan & Toplis Limited 26 Park Road Melton Mowbray Leicestershire LE13 1TT
BANKERS	HSBC Bank PLC 17 High Street Melton Mowbray Leicestershire LE13 0TY

Chairperson's Introduction

As we enter our 19th year as a local education charity the demand for our services is unprecedented. From the success of our education services to the essential service provided by our Community Transport scheme, we continue to be exceptionally busy. As Chair of the Board of Directors I wish to thank the whole staff team and all our volunteers for their dedication to all the charity strives to achieve.

This year the charity made the decision to further invest in our commitment to the community by purchasing a piece of land for use as a forest school. The land forms part of the old Crown Green Bowls Club in Melton Mowbray, which with dwindling membership had ceased to be operational. In partnership with the Indoor Bowls Club, we looked at how the site could be kept in community use and as a green space.

The benefit of learning outdoors through the use of Forest schools is widely known and for the Hub this would be a new opportunity to support our high need learners. Later in the report we have dedicated a whole section to how the Forest School came together. The new site allows our Engage team to widen their offer as well, with a new SEND (Special Educational Needs) group having already been commissioned for the next academic year.

Our Holiday Activities scheme this year significantly increased its service, taking young people to sites and trips they otherwise may not be able to experience. We are proud to invest any surplus the charity makes back into these wonderful experiences.

Our lottery funded Engage project has completed its first year of additional funding and we are pleased to report that the team has secured two contracts which will hopefully move the project into a cost-matching position. This maintains the service in the community but also reassures the National Lottery of the financial stability and demand for the service going forward.

The Board of Directors has remained stable this year and shows the commitment of us all to supporting the charity for the long-term. I myself have been on the Board since its inception and it is so rewarding to see young people who came to us for education in the early years now being in productive jobs both locally and nationally. As a Board we are proud of you all.

My final thanks as usual has to go to the grant givers who every year support our ideas and services. The Melton Learning Hub would never have developed to the level of service it currently offers without your support. In particular my thanks go to:

The Community Fund of the National Lottery - for continued support of Engage

Samworth Brothers for their supply of sandwiches to the centre and their community action day down at the new Forest School.

The local Rotary clubs who have each supported the charity in different ways, from the Thursday Girls Group to the Friday night Youth Club.

Sainsburys for their support in supplies for and funds towards the Christmas Hamper scheme we run with Help the Isolated.

Melton Borough Council for our award through the Community Grant programme that supported the Forest School site being totally accessible.

Finally, to Steve Jones who each year supports our student rewards programme.

Here is to 2025 - 2026, our 20th year!



Pam Posnett MBE

Chair of The Board of Directors

The Melton Learning Hub

Report of the Trustees

For the year ended 31 July 2025

The trustees who are also directors of the charity for the purposes of the Companies Act 2006, present their report with the financial statements of the charity for the year ended 31 July 2025. The trustees have adopted the provisions of Accounting and Reporting by Charities: Statement of Recommended Practice applicable to charities preparing their accounts in accordance with the Financial Reporting Standard applicable in the UK and Republic of Ireland (FRS 102) (effective 1 January 2019).

Objectives and Activities

The Melton Learning Hub (The Hub) is an alternative learning centre, offering young people a variety of vocational qualifications in practical subjects. The joint objectives reflect our combined aims now we have merged with Voluntary Action Melton. Our main objectives are:

(a) To act as a resource for young people up to the age of 25 living in Melton Borough and surrounding areas by providing advice and assistance and organising programmes of physical, educational and other activities as a means of

- advancing in life and helping young people by developing their skills, capacities and capabilities to enable them to participate in society as independent, mature and responsible individuals;
- advancing the education of young people;
- relieving unemployment.

(b) To help young people; especially, but not exclusively, through leisure time activities, so as to develop their capabilities so that they may grow to full maturity as individuals and members of society.

(c) To promote social inclusion for the public benefit in Melton Borough and surrounding areas by preventing people from becoming socially excluded and assisting them to integrate into society.

(d) To develop the capacity and skills of people who are socially excluded in Melton Borough and surrounding areas in such a way that they are better able to identify, and help meet their needs and to participate more fully in society.

The significant activities undertaken to further the charitable objectives are set out in the Achievement and Performance section.

The trustees have had due regard to the Charity Commission's guidance on public benefit.

Objectives and Aims of The Melton Learning Hub

Short- term

The charity is in a stable position although we know that there are significant changes on the horizon in the provision of alternative education and SEND provision.

- To create a stable environment for students and the staff team through the upcoming changes in SEND and alternative education provision.
- To progress the renewal of the lease for The Venue- which has been stalled due to a changing staff team at MBC. This will provide a stable learning environment for the students and stability for the charity.
- To additionally provide a HAF service during the Christmas holiday period. This will support our aim to deliver quality services to the young people of Melton Mowbray.
- Re-negotiate utility and operational overhead costs for reprographics to secure the lowest costs available. This will ensure the financial stability of the charity.

Long-term

- The Melton Learning Hub aims to be the leading Alternative Education provision in Leicestershire by working with Leicestershire County Council and LEBC to achieve the highest standards. We understand the field of alternative education will become more competitive with the introduction of change by the government. The charity must respond to the changes and its aim is to be a leader in this work.
- To work with NCFE to deliver the most appropriate, varied and challenging courses for learners. This will support our aim to deliver the best alternative education possible to learners.
- To retain our established and experienced staff team through the changes to alternative education. Stability within the staff team provides continuity for our learners and therefore positive terms and conditions are essential.

Structure, Governance and Management

Governing document

The organisation is a charitable company limited by guarantee, incorporated on 12 October 2010 and registered as a charity on 11 January 2011.

The company was established under a Memorandum of Association which established the objects and powers of the charity and is governed under its Articles of Association. The directors, who are the trustees for the purpose of charity law, who served during the year and up to the date of this report are set out on page 1. It is our policy to undertake ongoing risk assessments and take such measures as are necessary to ensure the health and safety of staff, volunteers, families and members of the public who visit our premises and are involved in our work.

Organisational Structure

Board of Directors is responsible authority for decision making of the charity. The Board meets every other month and receive a monthly profit and loss update. The Business Manager also receive a monthly update on the charity's activity. Sarah Cox is the Business Manager and Lucie Larke is the Operational Manager. Together both Managers have delegated authority for day-to-day activities. Alison Smith left the charity in December 2025 and Naomi Bindloss is the new the Finance Officer for the charity. Minutes are taken in both Director's Meetings and Staff Meetings.

Recruitment of Directors

There has been no recruitment of new Directors this year. The charity advertises if new directors are required. We seek a broad spectrum of skills for the board. All directors are provided with the Charity Commission guidance before they commence with us. As we are a charity that works with young people and vulnerable elderly people, all Directors are DBS checked and receive Safeguarding training on a yearly basis. One Director stood down this year as they became a Driver for our transport scheme. Our thanks go to Sharon Brown who remains a friend of the charity.

Pay Awards

Pay is determined by the Board of Directors on a yearly basis. The Board take into account the charity's current financial position and market forces, such as inflation. Yearly awards take into account the position of the charity, however if a surplus is forecast, yearly bonuses are determined by the Directors and awarded to staff.

Working together

The Melton Learning Hub is in a strong position in relation to our assets and therefore we work collaboratively to support other local charities. An example of this is the use of our site by MENCAP for their Summer scheme. We do not charge for this as they meet our charitable aims in the work they do with young adults with learning difficulties. Through our foodbank work we support Oasis Daycare and Brownlow School Wellbeing Hub, ensuring young people across the town have access to food. This year we have purchased a small piece of land in partnership with the Indoor Bowls Club. This land will be developed as a forest school for the use of all community groups in the town. Working with MENCAP we have been able to make the site totally accessible to wheelchair users, ensuring everyone gets to enjoy the outdoor activities we can offer.

Achievements and Performance

How do we measure our performance

As a charity we measure our success in the following ways:

- Feedback from schools. Each year we seek feedback from schools about how we have met their requirements and how we could improve our service.
- Number of qualifications we achieve for learners- we monitor this to identify challenges and areas for improvement in service delivery.
- Feedback from young people attending our social activities and LCC for delivery of HAF. For HAF in particular we have an annual review looking at what we could further deliver for LCC (Leicestershire County Council)
- Community transport seeks feedback from both its drivers and members of the community who use our service. These comments are regularly put out on social media to further promote the service.
- We monitor demand for different subjects and days to adjust our delivery model accordingly.

Alternative Education - Shortlisted for NCFE Centre of the YEAR

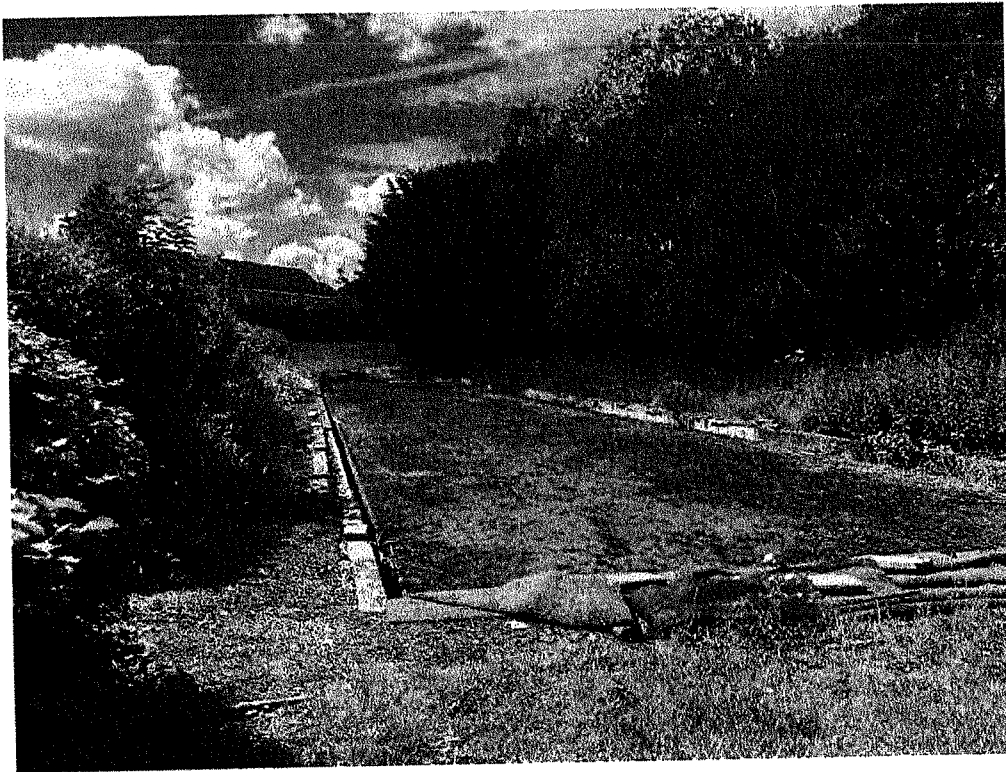
This year the team was exceptionally proud to be shortlisted for NCFE Centre of the Year. The work the team does often goes way beyond the delivery of formal qualifications. We recognise many of the young people who come to us are not emotionally in a position to learn and require support and guidance to help them

achieve their full potential. The Hub team prides itself on this and in turn this is then reflected in the qualifications and outcomes the young people achieve.

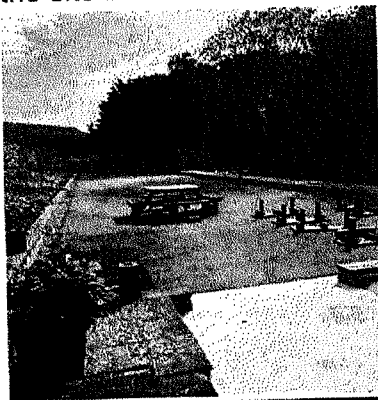


Forest School

When we first visited the site, it was wildly overgrown and had not been used for a number of years. We were concerned the site would require major investment but after an inspection by a local builder the charity felt more optimistic about the proposition. The site has a wide variety of trees and will be used for numerous activities. Using a grant from Melton Borough Council the site was made safe and accessible with ramps for wheelchair users. The first two pictures show what we were faced with. The site is adjoined by a brook that also required dredging.

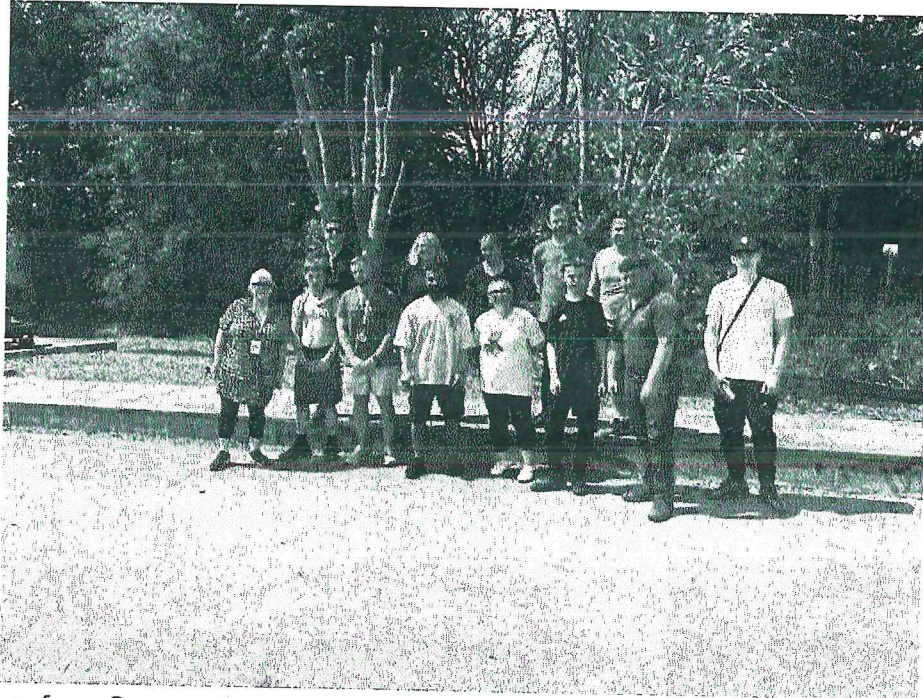


Following the first stage of work you can see from the picture below how much clearer the site became.



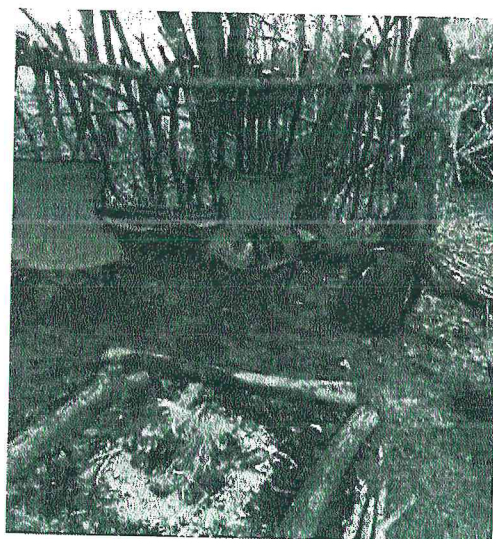
The site then required a full tree survey to ensure the safety of all site users. A number of diseased and damaged trees were removed. Nothing has been wasted in development of the site, with paving slabs reused from the bowls club side of the site.

All wood and branches have been stored for use in outdoor crafts. In June we welcomed a team from Samworth Brothers to the site. With our students they worked exceptionally hard to get the site ready for use. The whole site was mulched, weeded and painted. Thank you so much to Gift and the team (see below).



Team from Samworths supporting the Forest School

As the site opened in Summer we were joined by a little friend, Pumpkin the cat. We don't actually know the cats name but all the learners have named him and he seems very content joining in the campfire sessions. He also likes the odd sandwich.



Pumpkin the cat

Student of the Year



It was great to welcome Steve Jones to our centre to award Student of the Year to Kaiyen Godber. Congratulations to Kaiyen, who has come a long way since joining the Hub and is restarting mainstream school on a mixed timetable in the autumn. We are incredibly grateful for the support Steve gives us.

Student Achievements

The Hub is registered with NCFE as its exam board and we are proud of the ongoing achievements of our learners. The qualifications they achieve give access to further professional qualifications and college courses. Each year we develop further skills for the learners to develop. As an example, construction has expanded to offer lessons in slabbing, scaffolding, plastering and rendering. All of these skills are beneficial for their future study and work. Each year the students undertake a project in the Summer Term, which embeds all they have learnt through the year.

Preparation for Life and Work

This is our largest group of qualifications and we are always looking for new units to teach. The qualification ranges from Entry Level 3 through to Level 2 and as such can cater to a wide spectrum of ability. It also allows learners to progress during their time with us. There has been an increasing trend for learners to come on short-term placements from school, called a 6-week re-set. This has therefore seen a growth in Exploring qualifications rather than full awards. The learner still achieves and has something to show for their time with us before re-entering

full-time school education. Please note that the number of registrations is higher than certifications as we must enter any student who starts a qualification within a specific time. If a student then leaves, or returns to school, the registration is not converted to a certification.

QA Group	Code	Course	Number of Registrations	Number of Certifications
Preparation for Life and Work	601/1087/9	NCFE Level 1 Award Occupational studies for the workplace	53	49
Preparation for Life and Work	601/1086/7	NCFE Level 1 Exploring Occupational studies for the workplace	14	13
Preparation for Life and Work	601/1088/0	NCFE Level 1 Certificate Occupational studies for the workplace	10	10
Preparation for Life and Work	601/1186/9	NCFE Entry level 3 Occupational studies for the workplace	14	12
Preparation for Life and Work	601/1186/0	NCFE Entry Level Award in Occupational studies for the workplace	60	59
Preparation for Life and work	601/1424/1	NCFE Level 2 award in Occupational Studies for the workplace	6	6
Preparation for Life and work	601/1497/6	NCFE Level 2 Exploring Occupational Studies for the workplace	8	8
Level 1 Exercise Studies	500/7997/9	NCFE Level 1 Exercise Studies	13	12
childcare	500/9010/0	NCFE CACHE Level 1 Award in Caring for children	5	5
Employability	601/4680/1	NCFE Level 1 award in Employability	5	5
Personal and social Development	501/0672/7	NCFE Level 1 award in personal and social development	-	-

The arts remain very popular subjects with us. This year saw the introduction of a Textiles Class, with 5 learners achieving the new Level 1 qualification. Both the Textiles course and Heritage Crafts saw learners having the opportunity to visit and work with local craft producers to learn new techniques.

Creative Subjects

Arts and Media	500/8454/9	NCFE Level 1 Award in Graphic Design	15	15
Arts and Media	600/4944/3	NCFE Entry level in Creative Craft Entry 3	23	22
Arts and Media	601/3232/2/HTC	NCFE level 2 certificate in Heritage Craft	2	2
Arts and Media	601/3360/0	NCFE Level 1 in Creative Craft	30	25
Arts and Media	601/3360/0/COO	NCFE Level 1 Award in Creative Craft Cookery	3	3
Arts and Media	601/3360/0/TEX	NCFE Level 1 Award in Textiles	5	5
Arts and Media	601/3361/2	NCFE Level 2 Award in Creative Craft	-	-
Arts and Media	601/3361/2/COO	NCFE Level 2 award in Cookery	-	-
Arts and Media	601/3360/HTC	NCFE Level 1 Award in Heritage Craft	5	5

Functional Skills

Functional skills remains a popular back-up qualification for learners to take. It enables them to progress to college. The goal for most of our learners is to achieve a Level One in both English and Maths. This is challenging and equates to a low-level GCSE. The figures shown between registration and certification represent the large number of students who join us on a reset programme. These students have to be registered with NCFE, even though we know they will potentially be returning to school.

Functional Skills	603/5052/0	NCFE Entry level 3 English	28	11 (3 students failed one element of the exam and 3 refusals to sit the exams)
Functional Skills	603/5053/2	NCFE Entry Level 2 in Mathematics	11	9
Functional Skills	603/5054/4	NCFE Level 2 English	-	-
Functional Skills	603/5055/6	NCFE Level 1 in Mathematics	10	6 (1 fail and 1 refusal to sit)
Functional Skills	603/5056/8	NCFE Entry level 2 in English	7	4
Functional Skills	603/5058/1	NCFE Level 1 English	10	5 (3 refusals to sit the exam and 1 fail)
Functional Skills	603/5059/3	NCFE Entry Level 1 in English	2	1
Functional Skills	603/5061/1	NCFE Entry level 3 in Mathematics	24	20 (2 refusals and 2 fails)

We encourage you all to look at students work by following the link:
<https://www.facebook.com/melton.learninghub/videos/326961235003371>

HAF

The summer HAF this year took on a different format. The team wanted to give young people opportunities they might not otherwise have. Therefore, each Wednesday we took the group of 30 children on a day trip; a double HAF session. This was done at no cost to the families. The group went to Twycross Zoo, The Black Country Museum and the seaside. Some of the children attending had never seen the sea before. We continue to be a highly regarded HAF scheme and the staff seem to enjoy it as much as the children. The challenge next year will be how can we make the scheme and the trips even bigger and better.





Continuing the charity's commitment to young people that are not able to attend our HAF Summer scheme, the charity funded the MENCAP summer scheme to go to Twycross Zoo for the day. Particular thanks to Antony, our volunteer driver, who drove the group for the day.

The Venue – foodbank

The Hub continues to operate a foodbank service both to its own students and families across the district, supported by our Fair Share subscription & Tesco. We work closely with local schools and pre-schools to support families in need.

Although the funding from the Household Fund has reduced in the amount awarded from LCC, we continue to support large numbers of young people and their families. We work with Oasis Pre-school, The Grove and Help the Isolated to distribute the food we receive from Fare share.

Youth Club

The youth clubs returned, thanks to the Rotary Club of Melton Mowbray. Working with the Rotary Club and a small grant, we have been able to see the return of a monthly Friday youth club from the Venue. The Venue also hosts a SEND youth club and the Girls Group. These open sessions now have over 60 members, with attendance each month at about 30 to 40. The club is run by volunteers from our staff team who after a long week of work give up their time to ensure this valuable club continues. Each session offers a free meal, craft, fitness and cooking activities.

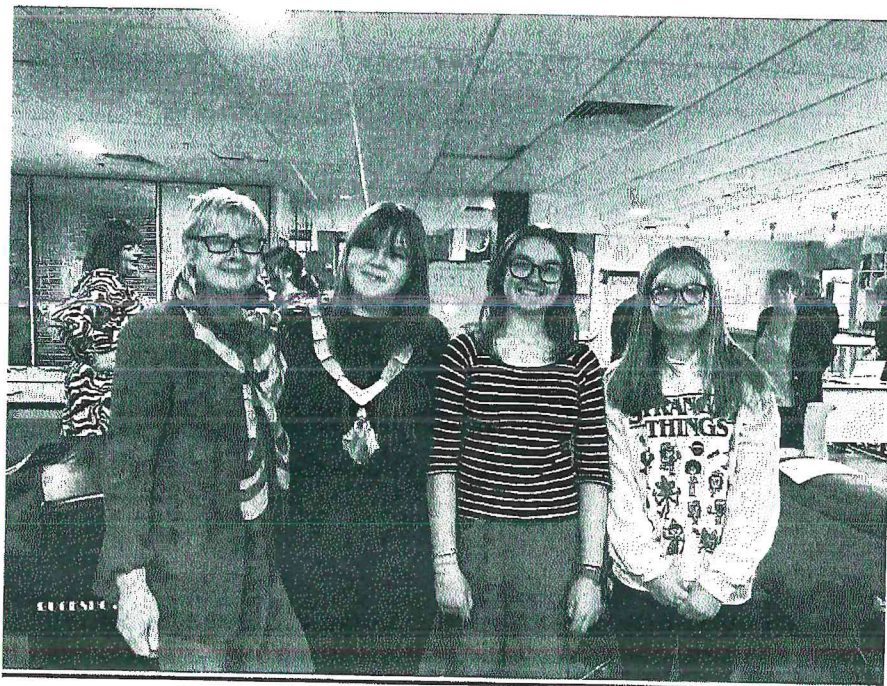


Fun at the Halloween Youth Club

SEND

Thanks to our Engage team and lead worker Joe, this offer has been so popular and continues to grow. This is an opportunity for families to come together and share their experiences of supporting young people with SEND needs.

Girls Group



Kate runs our Girls Group, with 25 members attending each Thursday. This year the group was visited by Pedestrian, who ran a music workshop. Thank you to the Mayor of Melton, Siggy Atherton, for coming to the group to watch the final performances.

Melton Borough Community Transport Scheme

The scheme continues to seek new drivers and this is the biggest threat to the continuation of the service. We have advertised repeatedly for new drivers but it is clear people are working longer. When they do retire some often have caring responsibilities, for example with grandchildren. We are ever grateful for the work our volunteer drivers do.

Our Community Transport Driver, Dave Bennett, retired this year having worked for us for 11 years. This followed 30 years service in Leicestershire Police. After all these years working for our community he deserves a rest, however he has committed to coming back as a volunteer driver.

Community Transport

This year has seen an increase in demand for our services with a stable number of drivers for the service. Our thanks as ever go to the drivers who give their time freely to support some of the most vulnerable people in our community. The scheme continues to be funded through a Leicestershire County Council grant and we are grateful for their continued financial support through such challenging financial times.

Breakdown of Community Transport Scheme Journeys 1st July 2024 - 30th June 2025

Community Transport

Type of Journey	Number of Journeys
Social Car Non-wheelchair user	3009
Wheelchair passenger journey	57
Carer journey	23
Total social journeys	3089

Trips to attend Hospital (Section 256)

Type of Journey	Number of Journeys
Non wheelchair journey	1524
Wheelchair journey	42
Carer Journeys	74
Total	1640
Total journeys for the scheme	4729

Volunteering for the Melton Learning Hub

The activities of the Melton Learning hub would not be able to continue without the fantastic support we have from our volunteers. Thanks to the volunteers and young volunteers who help run the monthly youth club and in particular the volunteer drivers who keep community transport running.

If you are interested in volunteering as a community driver please call 01664 482903 and speak to Naomi.

92 requests we could not fulfil due to a lack of drivers.

Trustee Statement Financial Review

The Melton Learning Hub is a company limited by guarantee, governed by its memorandum and Articles of Association. It is a registered charity with the Charity Commission.

Its main purpose is to promote charitable purposes for the benefit of the community and is contracted to act as a community hub, providing a range of services directly to the community.

There were 8 trustees at the start of the financial year, each of whom agrees to contribute £10 in the event of the Charity winding up.

The charity has operated a surplus this year and an allocation of this will be spent, in accordance with the business plan, on replacement of computers. The income of the charity fluctuates yearly on the basis of the affordability of schools being able to send students to us. We are therefore heavily affected by the funding for education. The aim of the charity is to maintain its strong educational and wellbeing reputation so we are the alternative educator of choice to schools. The charity has had no significant financial events this year that would cause risk to the charity. We have adopted a 6 months operating cost Reserves Policy which can be viewed on our website.

The Melton Learning Hub currently operates a current account and a reserves account. It is only due to the financial stability of the charity that in the forthcoming year we intend to look at investing the reserves to maximise income. This is not a position the charity has been in previously and therefore we intend to only adopt a low-risk investment strategy.

Principal funding sources

Total incoming resources for the period amounted to £897,755, with total resources expended of £825,277, resulting in net incoming resources of £72,478 (2024: £6,159).

The main sources of income for the charity continue to be that of invoiced income through providing teaching facilities, as well as donated income totalling £272,005, (2024: £176,664). During the year, the charity continued to be able to offer support and on site education to all of the students.

Reserves Policy

Reserves are defined as that part of the current assets freely available for general purposes, as opposed to fixed assets and monies held in restricted funds or designated for specific uses. At 31 July 2025 the free reserves were £747,774 (2024: £696,602).

The charity has had no significant financial events this year that would cause risk to the charity. We have adopted a 6 months operating cost Reserves Policy which can be viewed on our website.

Plans for future periods

The Melton Learning Hub remains in a secure financial position despite the changing landscape of alternative education provision. The Forest school has been the focus of work over the last year and is now ready for use by other community groups. The lease at the Venue has not yet been renewed leaving the charity in a potentially unstable position in respect of accommodation. Therefore funds need to be retained to enable us to seek alternative premises if required. No funds will be committed to refurbishment of the Venue until the lease is renewed. The Hub requires some work on the roof this year and the kitchen has also required some additional works which will utilise some of the available funds.

The Engage project has moved to a partially match funded position with income from Forest schools sessions supporting their activities. This sustainability is essential to demonstrate to the National Lottery for future funding bids.

The Melton Learning Hub Trust Board and Company

Directors

Pam Posnett - Individual Member - Chairperson

Kate Theobald - Individual Member

Linda Moore – Individual Member

Steve Taylor – Vice Chair

Peter Treadwell - Individual member

Rob Whittingham - Individual member

Doug Clements - Individual member

Paul Saxby- Individual Member

Sharon Butcher - Individual member (Resigned 23/08/2024)

Thank you to our funders

Our funders have supported our activities upholding the objectives of the charity. The Melton Learning Hub will always seek funding where the opportunity arises and the funder's objectives meet the aims of the charity. Therefore, much of our fundraising is in response to particular funding streams being announced. This fundraising supports the charity in replacing equipment and materials where we would struggle to do so otherwise. The National Lottery's support for Engage is essential to this valuable service in the community. In the upcoming year we will be looking at the viability of applying for continued funding or identifying an alternate grant giver to

maintain and develop the service. The Melton Learning Hub is extremely grateful to the following funding bodies who have helped and supported its work through the year:

- The Leicester, Leicestershire and Rutland Community Foundation – Engage running costs
- Transport Project - Leicestershire County Council - Delivery of Community Transport
- Samworths for support at the Forest school and our sandwiches each day.
- Steve Jones and the Sycamore Fund- for supporting material costs and the rewards programme we offer to students.
- All three Melton Rotary Clubs: The Melton Club, Aurora & Belvoir Clubs - sponsoring student of the year and helping fund our garden.
- National Lottery Community Fund - funding the Engage project
- Barratts - for materials to aid delivery of construction lessons.



Operational and Financial Statement

The Melton Learning Hub continues to operate a sound financial accounting system in accordance with its status as a registered charity (1139747)


Despite the ever-challenging financial climate that charities are facing, our Charity remains in a sustainable position. The focus of the Charity's financial position is to reduce the requirement for external funding and to ensure that all areas of operation are self-sustaining. In accordance with our Reserves Policy, we retain 6 months operating costs. Our Reserves Policy can be viewed online.

A copy of our year end accounts will be submitted to the Charity Commission and are available on request.

Kate Theobold

Finance Director

Approved by order of the board of trustees on 10.03.2026 and signed on its behalf by:


.....

P M Posnett - Trustee

**INDEPENDENT EXAMINER'S REPORT TO THE TRUSTEES OF
MELTON LEARNING HUB**

Independent examiner's report to the trustees of Melton Learning Hub ('the Company')

I report to the charity trustees on my examination of the accounts of the Company for the year ended 31 July 2025.

Responsibilities and basis of report

As the charity's trustees of the Company (and also its directors for the purposes of company law) you are responsible for the preparation of the accounts in accordance with the requirements of the Companies Act 2006 ('the 2006 Act').

Having satisfied myself that the accounts of the Company are not required to be audited under Part 16 of the 2006 Act and are eligible for independent examination, I report in respect of my examination of your charity's accounts as carried out under Section 145 of the Charities Act 2011 ('the 2011 Act'). In carrying out my examination I have followed the Directions given by the Charity Commission under Section 145(5) (b) of the 2011 Act.

Independent examiner's statement

Since your charity's gross income exceeded £250,000 your examiner must be a member of a listed body. I can confirm that I am qualified to undertake the examination because I am a member of the Institute of Chartered Accountants in England and Wales, which is one of the listed bodies.

I have completed my examination. I confirm that no matters have come to my attention in connection with the examination giving me cause to believe:

1. accounting records were not kept in respect of the Company as required by Section 386 of the 2006 Act; or
2. the accounts do not accord with those records; or
3. the accounts do not comply with the accounting requirements of Section 396 of the 2006 Act other than any requirement that the accounts give a true and fair view which is not a matter considered as part of an independent examination; or
4. the accounts have not been prepared in accordance with the methods and principles of the Statement of Recommended Practice for accounting and reporting by charities (applicable to charities preparing their accounts in accordance with the Financial Reporting Standard applicable in the UK and Republic of Ireland (FRS 102)).

I have no concerns and have come across no other matters in connection with the examination to which attention should be drawn in this report in order to enable a proper understanding of the accounts to be reached.



Niall Kingsley FCA
The Institute of Chartered Accountants in England and Wales

Duncan & Topliss Limited
26 Park Road
Melton Mowbray
Leicestershire
LE13 1TT

Date: 12/03/2026

MELTON LEARNING HUB

STATEMENT OF FINANCIAL ACTIVITIES
(INCORPORATING AN INCOME AND EXPENDITURE ACCOUNT)
FOR THE YEAR ENDED 31 JULY 2025

	Notes	Unrestricted funds £	Restricted funds £	2025 Total funds £	2024 Total funds £
INCOME AND ENDOWMENTS FROM					
Donations and legacies	2	25,373	246,632	272,005	176,664
Charitable activities					
Supporting young people	4	570,200	3,038	573,238	535,838
Transport, café and sundry income		-	29,129	29,129	28,476
Investment income	3	14,295	9,088	23,383	7,016
Other income		-	-	-	1,620
Total		<u>609,868</u>	<u>287,887</u>	<u>897,755</u>	<u>749,614</u>
EXPENDITURE ON					
Charitable activities					
Staff and volunteer costs	5	449,223	163,265	612,488	558,817
Café and sundry expenses		-	-	-	628
Administration		29,002	10,714	39,716	24,534
Activity costs		36,910	40,020	76,930	67,060
Establishment expenses		51,011	45,132	96,143	92,416
Total		<u>566,146</u>	<u>259,131</u>	<u>825,277</u>	<u>743,455</u>
NET INCOME					
Transfers between funds	15	43,722	28,756	72,478	6,159
		7,450	(7,450)	-	-
Net movement in funds		<u>51,172</u>	<u>21,306</u>	<u>72,478</u>	<u>6,159</u>
RECONCILIATION OF FUNDS					
Total funds brought forward		696,602	57,641	754,243	748,084
TOTAL FUNDS CARRIED FORWARD		<u><u>747,774</u></u>	<u><u>78,947</u></u>	<u><u>826,721</u></u>	<u><u>754,243</u></u>

The notes form part of these financial statements

MELTON LEARNING HUB

BALANCE SHEET
31 JULY 2025

	Notes	Unrestricted funds £	Restricted funds £	2025 Total funds £	2024 Total funds £
FIXED ASSETS					
Tangible assets	12	122,235	-	122,235	90,363
CURRENT ASSETS					
Debtors	13	31,381	1,348	32,729	53,953
Cash at bank and in hand		620,097	169,129	789,226	699,662
		<u>651,478</u>	<u>170,477</u>	<u>821,955</u>	<u>753,615</u>
CREDITORS					
Amounts falling due within one year	14	(25,937)	(91,532)	(117,469)	(89,735)
		<u>625,541</u>	<u>78,945</u>	<u>704,486</u>	<u>663,880</u>
NET CURRENT ASSETS					
		<u>747,776</u>	<u>78,945</u>	<u>826,721</u>	<u>754,243</u>
TOTAL ASSETS LESS CURRENT LIABILITIES					
		<u>747,776</u>	<u>78,945</u>	<u>826,721</u>	<u>754,243</u>
NET ASSETS					
		<u>747,776</u>	<u>78,945</u>	<u>826,721</u>	<u>754,243</u>
FUNDS	15				
Unrestricted funds				747,776	696,602
Restricted funds				<u>78,945</u>	<u>57,641</u>
TOTAL FUNDS				<u>826,721</u>	<u>754,243</u>

The charitable company is entitled to exemption from audit under Section 477 of the Companies Act 2006 for the year ended 31 July 2025.

The members have not required the company to obtain an audit of its financial statements for the year ended 31 July 2025 in accordance with Section 476 of the Companies Act 2006.

The trustees acknowledge their responsibilities for

- ensuring that the charitable company keeps accounting records that comply with Sections 386 and 387 of the Companies Act 2006 and
- preparing financial statements which give a true and fair view of the state of affairs of the charitable company as at the end of each financial year and of its surplus or deficit for each financial year in accordance with the requirements of Sections 394 and 395 and which otherwise comply with the requirements of the Companies Act 2006 relating to financial statements, so far as applicable to the charitable company.

These financial statements have been prepared in accordance with the provisions applicable to charitable companies subject to the small companies regime.

10.03.2026

The financial statements were approved by the Board of Trustees and authorised for issue on and were signed on its behalf by:

P.M. Posnett.

P M Posnett - Trustee

The notes form part of these financial statements

MELTON LEARNING HUB

**CASH FLOW STATEMENT
FOR THE YEAR ENDED 31 JULY 2025**

	Notes	2025 £	2024 £
Cash flows from operating activities			
Cash generated from operations	1	121,898	83,607
Net cash provided by operating activities		<u>121,898</u>	<u>83,607</u>
Cash flows from investing activities			
Purchase of tangible fixed assets		(58,167)	(15,739)
Sale of tangible fixed assets		2,450	4,250
Interest received		23,383	7,016
Net cash used in investing activities		<u>(32,334)</u>	<u>(4,473)</u>
Change in cash and cash equivalents in the reporting period		<u>89,564</u>	<u>79,134</u>
Cash and cash equivalents at the beginning of the reporting period		<u>699,662</u>	<u>620,528</u>
Cash and cash equivalents at the end of the reporting period		<u><u>789,226</u></u>	<u><u>699,662</u></u>

The notes form part of these financial statements

MELTON LEARNING HUB

NOTES TO THE CASH FLOW STATEMENT
FOR THE YEAR ENDED 31 JULY 2025

1. RECONCILIATION OF NET INCOME TO NET CASH FLOW FROM OPERATING ACTIVITIES

	2025	2024
	£	£
Net income for the reporting period (as per the Statement of Financial Activities)	72,478	6,159
Adjustments for:		
Depreciation charges	22,797	22,530
Loss/(profit) on disposal of fixed assets	1,048	(1,620)
Interest received	(23,383)	(7,016)
Decrease/(increase) in debtors	21,224	(3,300)
Increase in creditors	27,734	66,854
Net cash provided by operations	<u>121,898</u>	<u>83,607</u>

2. ANALYSIS OF CHANGES IN NET FUNDS

	At 1.8.24	Cash flow	At 31.7.25
	£	£	£
Net cash			
Cash at bank and in hand	<u>699,662</u>	<u>89,564</u>	<u>789,226</u>
	<u>699,662</u>	<u>89,564</u>	<u>789,226</u>
Total	<u>699,662</u>	<u>89,564</u>	<u>789,226</u>

The notes form part of these financial statements

NOTES TO THE FINANCIAL STATEMENTS
FOR THE YEAR ENDED 31 JULY 2025

1. ACCOUNTING POLICIES

Basis of preparing the financial statements

The financial statements of the charitable company, which is a public benefit entity under FRS 102, have been prepared in accordance with the Charities SORP (FRS 102) 'Accounting and Reporting by Charities: Statement of Recommended Practice applicable to charities preparing their accounts in accordance with the Financial Reporting Standard applicable in the UK and Republic of Ireland (FRS 102) (effective 1 January 2019)', Financial Reporting Standard 102 'The Financial Reporting Standard applicable in the UK and Republic of Ireland' and the Companies Act 2006. The financial statements have been prepared under the historical cost convention.

The financial statements contain information about Melton Learning Hub as an individual charitable company.

The financial statements are presented in £ Sterling and are rounded to the nearest pound.

Melton Learning Hub is a private limited company, limited by guarantee, incorporated in England and Wales. Its registered office is Burton Road, Melton Mowbray, Leicestershire, LE13 1DJ

The charitable company is a public benefit entity as defined by FRS102.

The accounts have been prepared on a going concern basis which the trustees consider appropriate

Income

All income is recognised in the Statement of Financial Activities once the charity has entitlement to the funds, it is probable that the income will be received and the amount can be measured reliably.

The charity receives grants to support the charitable activities described in the trustees' report. Grant income is recognised at fair value when the charity becomes entitled to the funds, which requires that any specified performance conditions have been met, receipt of the income is probable, and the amount can be measured reliably. Where these conditions are not yet satisfied, the income is deferred until entitlement arises.

Donations and legacies are recognised as income when the charity has been notified in writing of both the amount and the expected settlement date.

Income from charitable activities includes income earned from the provision of supporting young people and the provision of transport as detailed in the trustees' report. Income is received in exchange for supplying services in order to raise funds and is recognised when the service has been provided.

Income from government and other grants is recognised at fair value when the charity has entitlement after any performance conditions are met, it is probable that the income will be received and the amount can be measured reliably. If entitlement is not met then these amounts are deferred.

Interest on funds held on deposit is included when receivable and the amount can be measured reliably by the Charity; this is normally upon notification of the interest paid or payable by the bank.

Donated services and facilities

Donated professional services and donated facilities are recognised as income when the charity has control over the item, any conditions associated with the donated item have been met, the receipt of economic benefit from the use by the charity of the item is probable, and that economic benefit can be measured reliably. In accordance with the Charities SORP (FRS 102), the time of our volunteers is not recognised. Please refer to the trustees' annual report for more information about their contribution.

Expenditure

Liabilities are recognised as expenditure as soon as there is a legal or constructive obligation committing the charity to that expenditure, it is probable that a transfer of economic benefits will be required in settlement and the amount of the obligation can be measured reliably. Expenditure is accounted for on an accruals basis and has been classified under headings that aggregate all cost related to the category. Where costs cannot be directly attributed to particular headings they have been allocated to activities on a basis consistent with the use of resources.

Tangible fixed assets

Depreciation is provided at the following annual rates in order to write off each asset over its estimated useful life.

Fixtures and fittings	12.5% reducing balance
Motor vehicles	25% reducing balance

NOTES TO THE FINANCIAL STATEMENTS - continued
FOR THE YEAR ENDED 31 JULY 2025

1. ACCOUNTING POLICIES - continued

Taxation

The charity is exempt from corporation tax on its charitable activities.

Fund accounting

Unrestricted funds can be used in accordance with the charitable objectives at the discretion of the trustees.

Restricted funds can only be used for particular restricted purposes within the objects of the charity. Restrictions arise when specified by the donor or when funds are raised for particular restricted purposes.

Further explanation of the nature and purpose of each fund is included in the notes to the financial statements.

Pension costs and other post-retirement benefits

The charitable company operates a defined contribution pension scheme. Contributions payable to the charitable company's pension scheme are charged to the Statement of Financial Activities in the period to which they relate.

Debtors and creditors receivable / payable within one year

Debtors and creditors with no stated interest rate and receivable or payable within one year are recorded at transaction price. Any losses arising from impairment are recognised in expenditure.

2. DONATIONS AND LEGACIES

			2025 £	2024 £
Voluntary income			<u>272,005</u>	<u>176,664</u>
	UNRESTRICTED £	RESTRICTED £	2025 TOTAL £	2024 TOTAL £
General	25,372	-	25,372	22,719
Big Lottery	-	143,467	143,467	64,617
Leicestershire County Council	-	81,276	81,276	83,213
Leic & Rutland Community Fund	-	-	-	3,343
Rotary Youth	-	1,890	1,890	1,250
Sycamore Fund	-	-	-	1,522
Forest School	-	20,000	20,000	-
	<u>25,372</u>	<u>246,633</u>	<u>272,005</u>	<u>176,664</u>

Included within donations is £NIL (2024: £1,000) in respect of donated facilities and services.

Included within grants receivable above and under charitable activities are the following amounts:

Leicestershire County Council £60,965 (2024: £64,506)

Leicestershire & Rutland Community Foundation £NIL (2024: £3,343)

Big Lottery £142,386 (2024: £64,296)

Forest School £20,000 (2024: NIL)

Rotary Youth £1,250 (2024: £1,250)

Which are government grants as defined by the SORP.

MELTON LEARNING HUB

NOTES TO THE FINANCIAL STATEMENTS - continued
FOR THE YEAR ENDED 31 JULY 2025

3. INVESTMENT INCOME

	2025	2024
	£	£
Deposit account interest	23,383	7,016

4. INCOME FROM CHARITABLE ACTIVITIES

	Activity	2025	2024
		£	£
Invoiced income	Supporting young people	573,238	535,838
Transport, café and sundry income	Transport, café and sundry income	29,129	28,476
		602,367	564,314

5. CHARITABLE ACTIVITIES COSTS

	Direct Costs	Support costs (see note 6)	Totals
	£	£	£
Staff and volunteer costs	612,233	255	612,488
Administration	23,035	16,681	39,716
Activity costs	66,859	10,071	76,930
Establishment expenses	96,143	-	96,143
	798,270	27,007	825,277

6. SUPPORT COSTS

	Management	Finance	Governance costs	Totals
	£	£	£	£
Staff and volunteer costs	255	-	-	255
Administration	11,257	174	5,250	16,681
Activity costs	10,071	-	-	10,071
	21,583	174	5,250	27,007

Included within support costs is Insurance, telephone expenses, post and stationery and advertising costs.

7. NET INCOME/(EXPENDITURE)

Net income/(expenditure) is stated after charging/(crediting):

	2025	2024
	£	£
Depreciation - owned assets	22,797	22,530
(Deficit)/surplus on disposal of fixed assets	1,048	(1,620)

MELTON LEARNING HUB

**NOTES TO THE FINANCIAL STATEMENTS - continued
FOR THE YEAR ENDED 31 JULY 2025**

8. INDEPENDENT EXAMINERS' REMUNERATION

	2025	2024
	£	£
Accounts & Independent examination fees	<u>5,250</u>	<u>4,240</u>

9. TRUSTEES' REMUNERATION AND BENEFITS

There were no trustees' remuneration or other benefits for the year ended 31 July 2025 nor for the year ended 31 July 2024.

Trustees' expenses

There were no trustees' expenses paid for the year ended 31 July 2025 nor for the year ended 31 July 2024.

10. STAFF COSTS

	2025	2024
	£	£
Wages and salaries	550,139	489,442
Social security costs	27,012	37,013
Other pension costs	<u>16,822</u>	<u>15,458</u>
	<u>593,973</u>	<u>541,913</u>

Volunteer costs paid during the year of £18,260 (2024 £16,904)

The average monthly number of employees during the year was as follows:

	2025	2024
	20	17
Employees	<u>20</u>	<u>17</u>

No employees received emoluments in excess of £60,000.

11. COMPARATIVES FOR THE STATEMENT OF FINANCIAL ACTIVITIES

	Unrestricted funds £	Restricted funds £	Total funds £
INCOME AND ENDOWMENTS FROM			
Donations and legacies	22,718	153,946	176,664
Charitable activities			
Supporting young people	535,838	-	535,838
Transport, café and sundry income	-	28,476	28,476
	7,016	-	7,016
Investment income	1,620	-	1,620
Other income	<u>567,192</u>	<u>182,422</u>	<u>749,614</u>
Total			
EXPENDITURE ON			
Charitable activities			
Staff and volunteer costs	422,689	136,128	558,817
Café and sundry expenses	628	-	628
Administration	21,026	3,508	24,534
Activity costs	32,484	34,576	67,060
Establishment expenses	<u>59,898</u>	<u>32,518</u>	<u>92,416</u>
Total	<u>536,725</u>	<u>206,730</u>	<u>743,455</u>
NET INCOME/(EXPENDITURE)	30,467	(24,308)	6,159

NOTES TO THE FINANCIAL STATEMENTS - continued
FOR THE YEAR ENDED 31 JULY 2025

11. COMPARATIVES FOR THE STATEMENT OF FINANCIAL ACTIVITIES - continued

	Unrestricted funds £	Restricted funds £	Total funds £
RECONCILIATION OF FUNDS			
Total funds brought forward	666,135	81,949	748,084
TOTAL FUNDS CARRIED FORWARD	<u>696,602</u>	<u>57,641</u>	<u>754,243</u>

12. TANGIBLE FIXED ASSETS

	Freehold property £	Fixtures and fittings £	Motor vehicles £	Totals £
COST				
At 1 August 2024	-	46,422	136,682	183,104
Additions	23,711	17,784	16,672	58,167
Disposals	-	-	(11,794)	(11,794)
At 31 July 2025	<u>23,711</u>	<u>64,206</u>	<u>141,560</u>	<u>229,477</u>
DEPRECIATION				
At 1 August 2024	-	23,362	69,379	92,741
Charge for year	-	3,553	19,244	22,797
Eliminated on disposal	-	-	(8,296)	(8,296)
At 31 July 2025	<u>-</u>	<u>26,915</u>	<u>80,327</u>	<u>107,242</u>
NET BOOK VALUE				
At 31 July 2025	<u>23,711</u>	<u>37,291</u>	<u>61,233</u>	<u>122,235</u>
At 31 July 2024	<u>-</u>	<u>23,060</u>	<u>67,303</u>	<u>90,363</u>

13. DEBTORS: AMOUNTS FALLING DUE WITHIN ONE YEAR

	2025 £	2024 £
Trade debtors	18,422	37,896
Other debtors	118	596
Prepayments	<u>14,189</u>	<u>15,461</u>
	<u>32,729</u>	<u>53,953</u>

NOTES TO THE FINANCIAL STATEMENTS - continued
FOR THE YEAR ENDED 31 JULY 2025

14. CREDITORS: AMOUNTS FALLING DUE WITHIN ONE YEAR

	2025	2024
	£	£
Trade creditors	8,085	5,413
Social security and other taxes	9,556	7,807
Other creditors	618	1,158
Accruals and deferred income	99,210	75,357
	<u>117,469</u>	<u>89,735</u>

Deferred Income

	2025	2024
	£	£
Deferred income is included within:		
Creditors due within one year	49,941	56,972
	<u>49,941</u>	<u>3,048</u>

The movement in deferred income during the year was as follows:

Grants received:		
Total deferred income at 1 August 2024	56,972	3,047
Amounts received in year	228,743	193,390
Amounts credited to statement of financial activities	(235,774)	(139,465)
	<u>49,941</u>	<u>56,972</u>

Income from grants received has been deferred where time related performance conditions have not been met.

15. MOVEMENT IN FUNDS

	At 1.8.24	Net movement in funds	Transfers between funds	At 31.7.25
	£	£	£	£
Unrestricted funds				
General fund	640,388	43,724	7,450	691,562
Minibus Fund	53,763	-	-	53,763
Replacement vehicle fund	2,451	-	-	2,451
	<u>696,602</u>	<u>43,724</u>	<u>7,450</u>	<u>747,776</u>
Restricted funds				
Big Lottery	10,472	25,229	-	35,701
Leicestershire County Council	28,027	4,457	-	32,484
Leics & Rutland Community Foundation	3,274	(3,274)	-	-
Berhardi/ Dereham Reid Trust	9,200	-	-	9,200
MMBC Lottery	4,215	(4,215)	-	-
David Wilson Foundation	113	(113)	-	-
Rotary Youth	1,250	310	-	1,560
Sycamore Fund	1,090	(1,090)	-	-
Forest School	-	7,450	(7,450)	-
	<u>57,641</u>	<u>28,754</u>	<u>(7,450)</u>	<u>78,945</u>
TOTAL FUNDS	<u>754,243</u>	<u>72,478</u>	<u>-</u>	<u>826,721</u>

MELTON LEARNING HUB

NOTES TO THE FINANCIAL STATEMENTS - continued
FOR THE YEAR ENDED 31 JULY 2025

15. MOVEMENT IN FUNDS - continued

Net movement in funds, included in the above are as follows:

	Incoming resources £	Resources expended £	Movement in funds £
Unrestricted funds			
General fund	609,868	(566,144)	43,724
Restricted funds			
Big Lottery	148,404	(123,175)	25,229
Leicestershire County Council	113,418	(108,961)	4,457
Leics & Rutland Community Foundation	-	(3,274)	(3,274)
MMBC Lottery	-	(4,215)	(4,215)
David Wilson Foundation	-	(113)	(113)
Rotary Youth	1,890	(1,580)	310
Sycamore Fund	-	(1,090)	(1,090)
Forest School	24,175	(16,725)	7,450
	<u>287,887</u>	<u>(259,133)</u>	<u>28,754</u>
TOTAL FUNDS	<u>897,755</u>	<u>(825,277)</u>	<u>72,478</u>

Comparatives for movement in funds

	At 1.8.23 £	Net movement in funds £	At 31.7.24 £
Unrestricted funds			
General fund	609,921	30,467	640,388
Minibus Fund	53,763	-	53,763
Replacement vehicle fund	2,451	-	2,451
	<u>666,135</u>	<u>30,467</u>	<u>696,602</u>
Restricted funds			
Big Lottery	32,925	(22,453)	10,472
Leicestershire County Council	23,102	4,925	28,027
Leics & Rutland Community Foundation	8,772	(5,498)	3,274
Berhardi/ Dereham Reid Trust	9,200	-	9,200
MMBC Lottery	4,215	-	4,215
David Wilson Foundation	3,735	(3,622)	113
Rotary Youth	-	1,250	1,250
Sycamore Fund	-	1,090	1,090
	<u>81,949</u>	<u>(24,308)</u>	<u>57,641</u>
TOTAL FUNDS	<u>748,084</u>	<u>6,159</u>	<u>754,243</u>

MELTON LEARNING HUB

NOTES TO THE FINANCIAL STATEMENTS - continued FOR THE YEAR ENDED 31 JULY 2025

15. MOVEMENT IN FUNDS - continued

Comparative net movement in funds, included in the above are as follows:

	Incoming resources £	Resources expended £	Movement in funds £
Unrestricted funds			
General fund	567,192	(536,725)	30,467
Restricted funds			
Big Lottery	64,616	(87,069)	(22,453)
Leicestershire County Council	111,691	(106,766)	4,925
Leics & Rutland Community Foundation	3,343	(8,841)	(5,498)
David Wilson Foundation	-	(3,622)	(3,622)
Rotary Youth	1,250	-	1,250
Sycamore Fund	1,522	(432)	1,090
	<u>182,422</u>	<u>(206,730)</u>	<u>(24,308)</u>
TOTAL FUNDS	<u>749,614</u>	<u>(743,455)</u>	<u>6,159</u>

Big Lottery

This is funding for our Engage family and youth support workers. The project was in its final year in 2023, however was renewed for 4 more years from July 2024. The youth workers support young people and their families through bereavement/ separation and behaviour issues. the project is subject of a separate annual report which is put on our website each year.

Leicestershire County Council

Supported us through their Shire grant programme. The grant supported the work of the Engage project by funding running costs such as fuel and activities with the young people. This is made up of several different restricted funds covering the Household fund, Minibus and Grants for the transport scheme.

Leic & Rutland Community Foundation

They give numerous streams of funding. This year the funding was towards the Engage project and in particular support for older young people who needed further qualifications and support to access employment.

Berhardi/ Dereham Reid Trust

This is a private donation to Community transport. It is for the purpose of repairing the wheelchair vehicle and funding dead mileage. It has not needed to be used so far.

MMBC Lottery

This is from the community lottery. can be used for any of the charities aims.

David Wilson Foundation

This was to build a construction shed and outdoor plastering shed. Funding is for construction purposes. The shed was completed within the 2023 year end and expenditure of £11,185 was capitalised within fixed assets. A related transfer was made from the David Wilson Foundation Fund to the General fund in 2023 to recognise this asset as now being available for general charitable purposes.

Rotary Youth

This is from the Rotary for us to operate a youth club. The funding is used for materials, staffing and volunteer rewards.

Sycamore Fund

This was awarded within the year for materials and student rewards.

Forest School

During the year Melton Borough Council kindly donated £20,000 towards the construction of a Forest School for the Charity.

NOTES TO THE FINANCIAL STATEMENTS - continued
FOR THE YEAR ENDED 31 JULY 2025

15. MOVEMENT IN FUNDS - continued

Transfers between funds

During the year Melton Borough Council kindly donated £20,000 towards the construction of a Forest School for the Charity. Of this amount, £7,450 was used to build a shed within the year and has been capitalised. A related transfer of £7,450 has been made to recognise this asset as now being available for general charitable purposes.

16. RELATED PARTY DISCLOSURES

There were no related party transactions for the year ended 31 July 2025.