

Betsi Cadwaladr University Health Board Charity and Other Related Charities

Annual Report and Accounts 2023 – 2024



The working name of the Betsi Cadwaladr University Health Board Charity and Other Related Charities is Awyr Las Gogledd Cymru (Blue Sky North Wales). The charity is also referred to as the North Wales NHS Charity.
Registered Charity Number 1138976

Contents

Thank you from the Charitable Funds Committee Chair	01
Appreciation from the Charity's Honorary President	03
Highlights of 2023/24	05
The year at a glance	11
The impact of your support	14
The structure of the Charity	22
Looking ahead	24
Governance	24
Financial summary	28
Balance Sheet	29
Risk	30
Reserves policy	30
Accounts	32
Audit Report	56
Appendix 1	60

Thank you.

With your help, we have made a significant positive impact for patients, service-users and NHS teams across North Wales this year. Together, we have funded a wide range of projects aimed at improving patient care and experience, driving innovation, and supporting the professional development and wellbeing of healthcare staff. We've played an important role in enhancing our health service across the region, and everyone who has contributed in different ways should be very proud of what has been achieved.

The hard work and generosity of fundraisers, donors and partners – and of course the healthcare staff who play such an important role in both motivating supporters and in making sure the charity's donations support the greatest needs of patients and healthcare services – is extraordinary. I have been fortunate to have met some of the many determined fundraisers, courageous patients and their grateful families, passionate volunteers and devoted staff who together make the charity what it is. I feel both privileged and humbled in my role as Chair of the Charitable Funds Committee; I am always amazed at what those who raise money for our NHS services accomplish, and impressed with how clinicians and support staff use donations to make both subtle and transformational improvements to healthcare provision for communities in North Wales.

Thanks to the support of NHS Charities Together and a range of local partners, organisations and families, the charity's activity has once again provided far-reaching benefits for some of the most vulnerable in our communities. I play a part in deciding how the charity prioritises its grants, and hear descriptions of how the charitable funding will make a difference for patients, service users and staff, but it's when we hear stories from those who have benefitted from the support of the charity that it makes me realise what an incredible impact the charity has on our local communities. I've chosen to draw attention to just some of the many programmes, additional equipment and improvement to the physical environment of our hospitals, health centres and community sites, that the charity has agreed to fund* this year:

- Complementary therapies and wigs for patients receiving cancer treatment
- Music therapy for neurodiverse children and their families and a range of arts in health activities
- Innovative Dementia Support and Mental Health Services programmes to trial new ways of working
- New clinical spaces in the North Wales Cancer Treatment Centre and the Shooting Star Unit
- Improved carer and parental accommodation facilities as well as bereavement spaces on acute hospital sites



- Additional and more comfortable furniture on wards and in day units and digital devices in acute hospitals
- An Audiology Van, to provide appointments and check-ups outside of hospital
- A range of additional and state-of-the art equipment from blood scanners to a colonoscope and ultrasound machinery
- Volunteering services and support for the Health Board's Staff Achievement Awards

This year the management of the Health Board's Welcome and Support Volunteer Service was transferred to the charity from the Royal Voluntary Service. Our Welcome and Support Volunteers have together answered more than 100,000 enquiries over the past 12 months, providing a helping hand for patients, visitors and staff. What a marvellous team we have! There is certainly a lot to celebrate and be thankful for.

The role played by NHS charities such as ours in supporting our health service has never been more important than it is today. Here in North Wales, we are committed to working with local communities, charitable partners, our staff, patients and many local supporters to ensure the support we receive through the charity can help our health care service be the very best it can be. These are challenging times, but the charity is well placed to help our NHS teams achieve impressive feats under difficult circumstances.

Thank you once again to all who have donated and to everyone who has given so much time and energy this year. Without your combined efforts, knowledge, expertise, positivity and determination, our patients and local communities would not have benefitted from the hundreds of important extras that the charity has provided this year.

Thank you,

DYFED JONES
CHAIR OF THE CHARITABLE FUNDS
COMMITTEE
JANUARY 2025



*The Charitable Funds Committee oversees the charity on behalf of its corporate Trustee. All funding requests over £5,000 must receive approval from the Charitable Funds Committee. Read more about the Charitable Funds Committee and the funding decisions taken here: [Charitable Funds Committee – Betsi Cadwaladr University Health Board \(nhs.wales\)](#)

What a difference you are making!

I revel in my role as Honorary President of this marvellous charity. It gives me the chance to thank the hard-working health service teams of staff and volunteers, and an opportunity to see communities right across North Wales at their very best, working together for a common cause to make our health service the best it can be.

A number of people ask what the charity is and what it does, and I delight in telling them. There are over 200 NHS charities across the UK, that together gift over £1 million every day of every year to enhance NHS services. Our charity is the NHS charity for North Wales, the area served by the Betsi Cadwaladr University Health Board.

The charity funds projects and ideas in hospitals and the community through its 400 plus different funds, supporting everyone and all areas of the health service in North Wales. The charity's vision is to have exceptional care at all times in all hospitals across the region, and that everyone across our communities can lead healthier lives. The mission is to seek to maximise the resources of the charity to enhance patient care and the well-being of our NHS Teams. The charity plays a key role in embedding a culture within the Health Board that celebrates and encourages voluntary activity that will help strengthen our healthcare services. Importantly, this ambition aligns with the milestones laid out in Wales' 'Well-being of Future Generations (Wales) Act (2015)'.

The charity's purpose is to help people, especially the most vulnerable people, across the region access the very best healthcare and wellbeing support in a timely way. In practice, this means that donations to the charity fund things like:

- Brand new equipment and technology
- Innovative research projects and trials
- Additional special services, for example, complementary therapies
- Extra patient comforts, such as more comfortable dialysis chairs
- Specialist training and development opportunities for NHS staff and volunteers

Everything that the charity funds goes over and above what the NHS provides, complementing what the NHS already offers. The charity does not replace the statutory funding for the NHS from the government.



The enhancements made possible by donations to the charity help make sure that people in North Wales can benefit from better NHS services when they need them the most.

Importantly, everything the charity can do is thanks to donations and grants from people like you and philanthropic organisations. I know because I have seen with my own eyes and have spoken to patients who have benefited from new equipment we have funded, that this charity makes a real difference to the lives of patients and NHS staff, in ways that would not have been possible without donations and support.

The charity provides a meaningful, impactful means for those who want to support our health service to do so, in a way that supports local evidence-based priorities. Patients are at the heart of the charity, and the doctors, nurses, allied health professionals and support staff within our healthcare service are, together, the lifeblood of the charity. I could not be prouder of those who choose to volunteer, fundraise, donate or remember a health service in their legacy and the clinical teams who advise how the funds raised should be used to benefit their patients.

Thank you again if you have chosen to support a health care service close to your heart here in North Wales this year.

THE RT HON. LORD BARRY JONES
HONORARY PRESIDENT OF THE CHARITY
JANUARY 2025



Highlights of 2023/24

April 2023

Six volunteers, including health care professionals and previous patients, came together to establish 'Star Box' to help support people receiving treatment for cancer in Wrexham.

Each year, around 20,000 people are diagnosed with cancer in Wales. These volunteers hatched a plan to make a small difference to those receiving treatment on the Shooting Star Unit at Wrexham Maelor Hospital. The 'Star Box' group were inspired to set up a dedicated fund for the 'Star Box' project after one of the members, Grace Parry, donated one hundred 'TREATment' Bags to the Unit after her treatment.

The bags included small, luxury comforts to support patients through their cancer journey, the feedback was extremely positive and staff knew they needed something else once they ran out. So, the Star Box was born!



May 2023

Throughout the month of May, Malcolm Pitts swam 10 miles and cycled 500 miles to raise money in memory of his wife, Yvonne, who passed away in 2006, 10 years after being diagnosed with breast cancer.

Malcolm has been raising money for the charity since Yvonne's death, and has raised over £10,000 for Alaw Day Unit, Conwy Ward and the Emergency department at Ysbyty Gwynedd.

Each year, Malcolm has increased his swimming and cycling to raise as much money as he can for the hospital that cared for Yvonne and has made a huge difference to patients, family and staff members with his work. Described as a 'remarkable person' by Sara Hardy-Roberts, the Alaw Unit Matron, Malcolm has become a much-loved familiar face in Ysbyty Gwynedd, having done so much to support the hospital and its patients.



June 2023

Survival rates of at home cardiac arrests are low, and for every minute that passes without Cardiopulmonary Resuscitation (CPR) or defibrillation, the chance of survival will decrease even more. For Rob Pierce, CPR and defibrillation saved his life when he was at home 12 months ago and suffered a heart arrhythmia, sending him into a cardiac arrest. Fortunately, Rob's wife was at home with him and performed CPR until paramedics arrived with a defibrillator. After 10 minutes, paramedics were able to restart Rob's heart and he was rushed to Wrexham Maelor's Critical Care Unit where he was placed into an induced coma.

Almost six months to the day following his cardiac arrest, Rob started working on the very wards he received treatment on and working alongside the teams that looked after him. To thank the Critical Care Unit for all their care and support, Rob and his new colleagues in the Portering Team climbed Yr Wyddfa and raised more than £2,200 that will go towards the new sensory garden and added extras for patients and their families. What an incredible story, and what an incredible team!



July 2023

Avid triathlete David Roberts raised more than £3,000 after completing 'Ironman UK' in July in celebration of the life of his mum, who passed away whilst on holiday in North Wales. David's family frequently holidayed at their caravan on Anglesey, and in June 2023 were visiting to see him take part in the Llanberis triathlon when his mum was unexpectedly taken ill and admitted to Ysbyty Gwynedd.

He said: "From the moment the paramedics arrived, to A&E and ICU, the level of care and compassion was exceptional." David's time to complete 'Ironman UK', in the most difficult conditions the race has ever witnessed, was a phenomenal 15 hours and 34 minutes. Thank you to David and to his family for their kind support in memory of his beloved mum.



August 2023

Fundraiser Bill Fowler completed a 75-mile bike ride raising over £1,000 for the Star Box fund following his cancer diagnosis in November 2021.

Bill began his chemotherapy treatment on the Shooting Star Unit at Wrexham Maelor Hospital in February 2022. Bill had heard about the Star Box idea on the unit and wanted to raise money to support them.

Talking about his treatment on the unit, Bill said: "The staff on the Shooting Star Unit are an amazing bunch of individuals – without exception, every single member of the team displays an exemplary level of professionalism along with kindness, empathy and, perhaps most important of all, a great sense of humour! Undergoing chemotherapy treatment will never be easy, but the team create an environment which is calm, reassuring and supportive."

Thank you, Bill!



September 2023

One of the youngest fundraisers to support the charity this year, Griff, raised a superb £5,181 for the Wrexham Children's Ward! Griff was diagnosed with Acute Lymphoblastic Leukaemia in October 2021, he has been receiving constant treatment since then, and will be until February 2025.

Kathryn, Griff's Mum, said: "The Children's Ward at Wrexham Maelor Hospital is where Griff's journey began and it continues today. The staff on the ward have become our second family, they have supported us through some of our darkest moments. The Paediatric Oncology Nurses go above and beyond in their roles, always on the other end of the phone no matter what. They are amazing and we cannot express how much we appreciate them."

Griff's had a hugely positive impact on others receiving care on the Children's Ward, thanks to his fundraising efforts. We all appreciate you, Griff, and all who have supported you!



October 2023

In October 2023, the Welcome and Support Volunteering Service was transferred over to the Charity from the Royal Voluntary Service. The team of almost 70 volunteers support visitors to Ysbyty Gwynedd and Ysbyty Glan Clwyd with finding their loved ones, making their way to their appointments and with any general enquiries they have.

The fantastic volunteers, some of whom have been volunteering for over 25 years, together answer almost 100,000 enquiries each year.

Ysbyty Glan Clwyd Hospital Director, Jalibani Ndebele says: "Our Welcome Volunteers are such an important part of our hospital team. They make a real difference for our patients and visitors, who often remark on how friendly and supportive the volunteers are at what can be a very daunting time for people. The volunteers greet everyone who enters the building with smiles, warm words of encouragement and helpful directions and signposting. Many of us would literally be lost without our wonderful volunteers!"



November 2023

Janet Bell donated a beautiful piece of original artwork for the new Bereavement Suite at Ysbyty Gwynedd in November. The Bereavement Team at Ysbyty Gwynedd worked hard throughout the year to raise more than £16,000 to create this new bereavement suite in the hospital for families who sadly lose their babies within the first 28 days of life.

The piece of artwork will make the new suite feel more homely for families who wish to spend time with their baby. Thank you, Janet, for this extra touch. We're all very grateful!



December 2023

The voluntary team at 'Chemocare Bags' have been donating support packages to Alaw Ward at Ysbyty Gwynedd since 2020 and in December they marked an impressive milestone: this fantastic organisation has now given more than 1,000 of these support packs to new patients receiving cancer treatment since launching.

The bags are filled with comforting items to help new chemotherapy patients at the start of their treatment, the bags include fluffy socks, notebook and pen, colouring book and pencils, hand warmers, hand sanitiser, lip balm, mints and hand cream.

Small gestures like this can have a big impact on patients when they receive a diagnosis. Thank you to all involved!



January 2024



The Kindness and Empathy Awards nominations opened in January for the second time.

Jon Crabb, a retired Clinical Operational Manager in the Mental Health and Learning Disabilities team, gave a substantial donation in 2022 to support staff wellbeing, and inspired the Learning Disabilities Team to launch these awards to recognise kindness, empathy to patients, relatives, colleagues and others.

It is heart-warming to see staff members dedicate time to ensuring former colleagues are celebrated for going over and above their roles in this way.

February 2024

The Shooting Star Unit celebrated its 20th anniversary since it welcomed its first patient. In 1997, the Shooting Star Appeal was launched after staff in Wrexham Maelor Hospital identified the need to establish a designated cancer unit on the site to help improve care for patients with cancer.

By 2002, more than £2.5 million had been raised after people across the local community came together to support the appeal, and building work began. On 2nd February, 2004, the day unit opened, initially providing a day unit for 12 patients to receive chemotherapy and immunotherapy, an outpatient clinic with four consultation rooms and a women's unit with four suites.

Regular improvements to the Shooting Star Unit continue to be made, thanks to the generous support of grateful patients and supporters and the dedicated staff team. The commitment and efforts of those who launched the Shooting Star Appeal all those years ago can still be felt today in this treasured cancer unit.



March 2024

The Rotary Club of Llandudno spent two weeks in the winter months of 2023 planting almost 4,000 daffodil bulbs at Llandudno Hospital, and to the delight of staff and patients these beautiful flowers bloomed for spring in March.

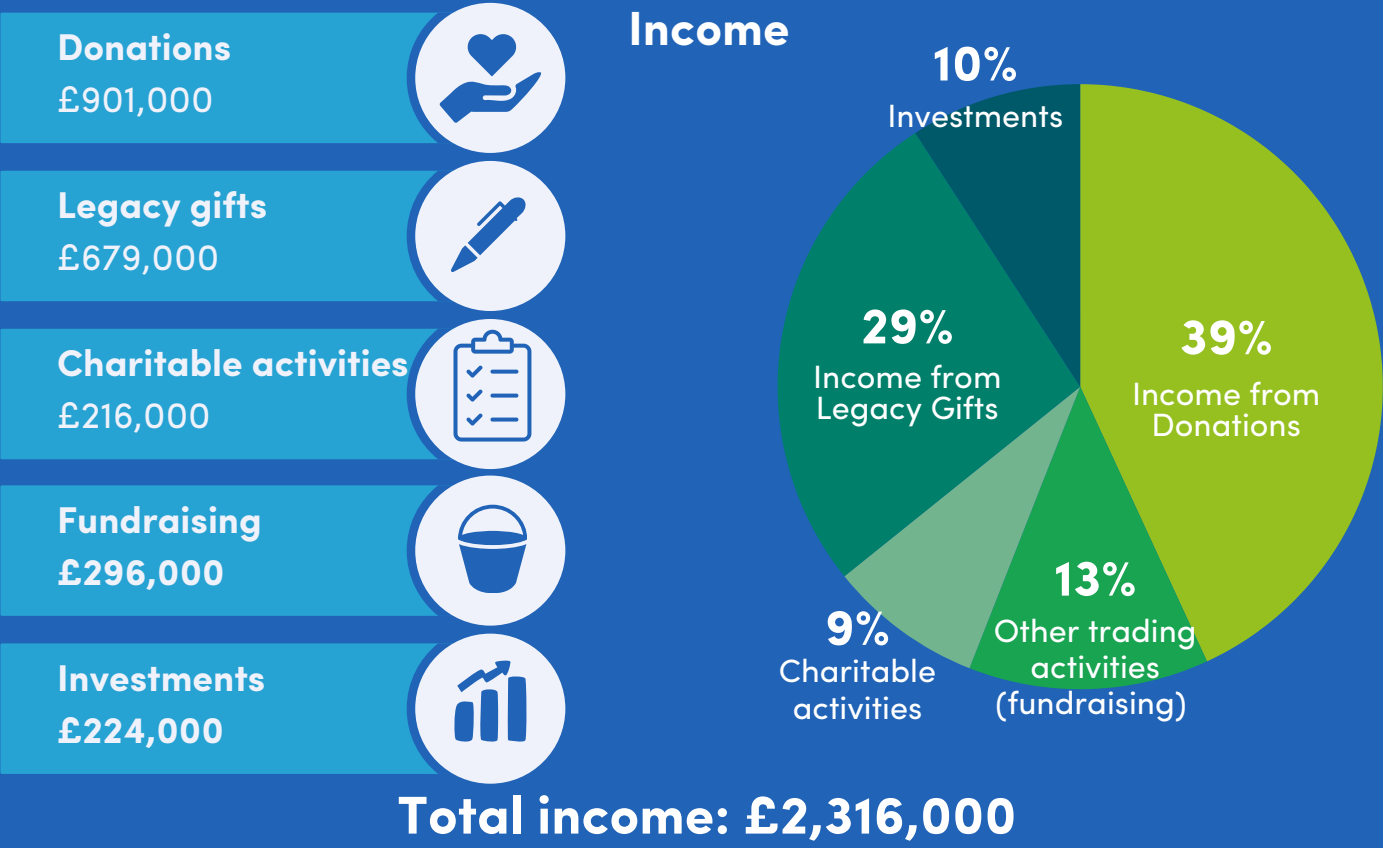
The daffodils were planted as part of a series of projects that the Llandudno Rotary and Llandudno Hospital are working on to enhance the outdoor spaces at the hospital, to improve patient, visitor and staff experience. The large lawn at the main entrance of the hospital became a field of gold, brimming with thousands of daffodils.

Huge thanks, wonderful Rotarians of Llandudno for planting all the bulbs. It was a demanding few days, but we all reaped the rewards of your labour when the stunning display of flowers bloomed!



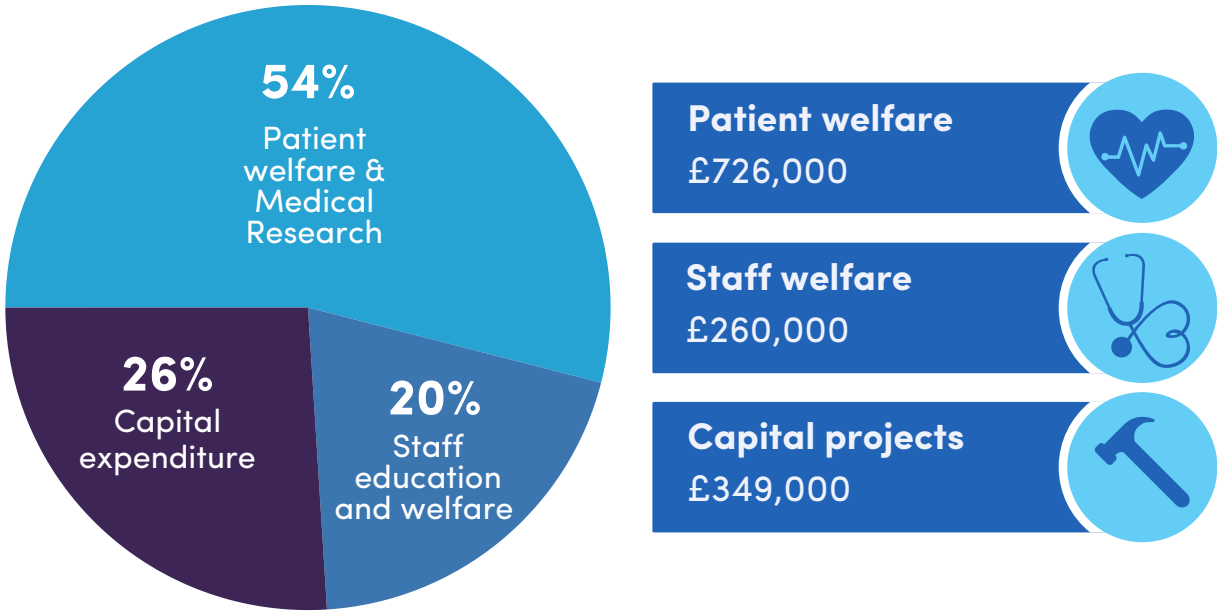
The year at a glance

In the 2023/24 financial year, the charity received an incredible amount of donations that has, and will, enable us to fund research, equipment, training, and patient and staff amenities.



Distribution of expenditure

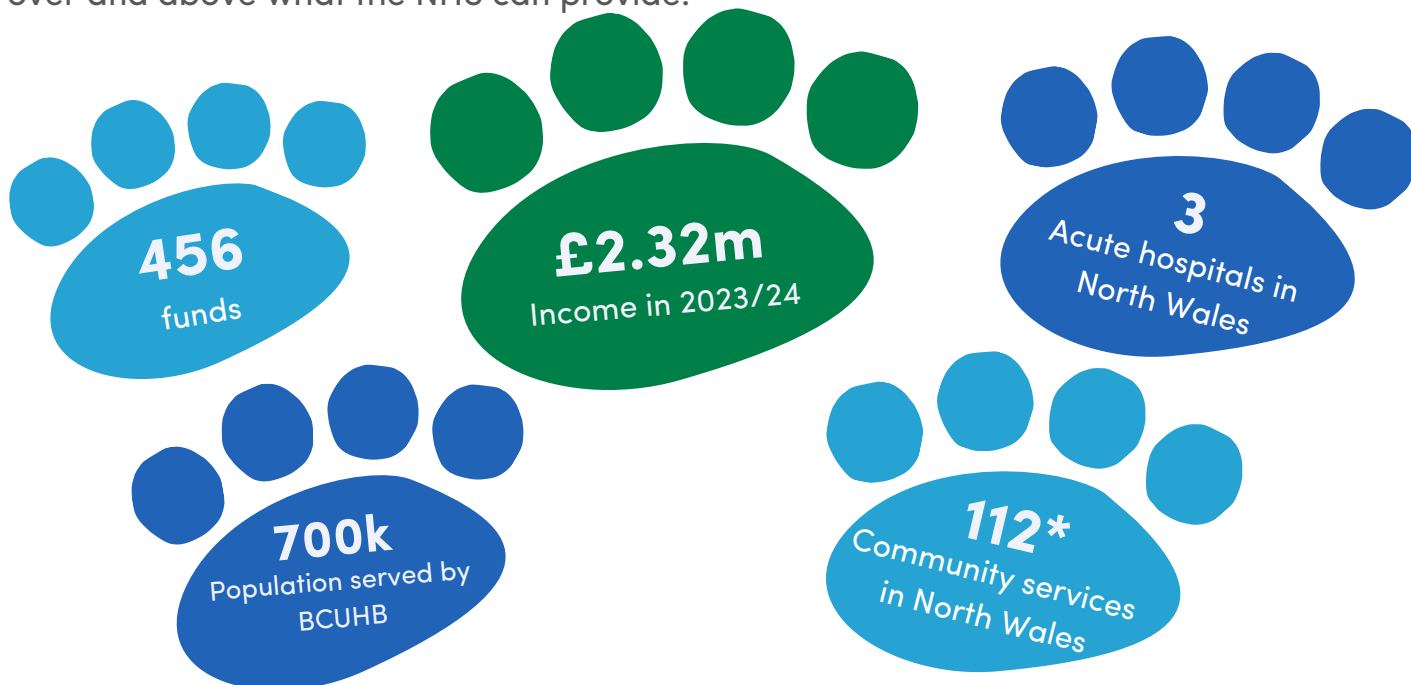
The charity has funded some amazing items that have allowed the NHS to go over and above for patients, families and staff members across North Wales. Below show where donations have been spent throughout the year.



Expenditure on Charitable Activities: £1,335,000

Background information

The charity covers the whole of North Wales and uses donations to improve healthcare in acute hospitals and community sites across the region. Almost every ward, department or service has a designated fund that can be used to fund things that go over and above what the NHS can provide.



*BCUHB provides a full range of primary, community, mental health and acute hospital services across 3 district hospitals, 22 community hospitals and a network of over 90 health centres, clinics, community health team bases and mental health units. BCUHB also coordinate the work of 113 GP practices and the NHS services provided by dentists, opticians and pharmacists across the region.

Priority areas

Cancer care, children's services and mental health are some of the charity's priority areas for improving care, treatment and support for patients and their families. Over the 2023/24 financial year, huge steps have been taken to provide care that is over and above what the NHS can provide.



What can be funded with your donations?

£10,000

A portable scanner on an Older Person's Ward

£1,000

Arts in Health sessions for neurodiverse children and their families

£250

Garden furniture to support with patient rehabilitation

£50

One nights' stay in parental accommodation

£5

Crafts and activities for dementia patients

£5,000

New comfy chairs in a day unit

£500

Wigs for cancer and dermatology patients

£100

Breast prosthesis

£10

Toys for children



The impact of your support

Families, organisations, businesses and individuals together made over 5,500 donations to Awyr Las in 2023/24. All donations have and will make a difference for patients, their families and for NHS staff, volunteers and partners. The average donation amount in 2023/24 was £254.05.

Donations given this year have helped fund small comforts to big projects including toys and games for children and dementia patients, to large-scale capital projects to improve services across the Health Board.

Premature baby bonding

More than 130 pairs of Miniboo premature baby comforters were funded in 2023, costing £3,386.40, thanks to generous supporters and Cherish, the parents support group for the Special Care Baby Unit (SCBU). When premature babies are in incubators on the ward, it's not always possible to hold them all the time as they need the support of specialist equipment. These comforters come in packs of two so a parent can have one to pick up their smells, and baby will have one too, the comforters are then swapped so both parent and baby benefit from each other's smells.

Lisa Andrews, Neonatal Unit Manager, said: "During times of separation, many families take comfort in swapping their miniboo's with their baby, this exchange of smells and scents provides familiarity to both baby and parents and promotes bonding." It's important for breastfeeding mothers to be near to their babies to help with milk flow, and it's extremely important for babies to be near their parents when they need their support most, as the comfort of a loved one can lower a baby's blood pressure. The comforters can also be used with twins who have been separated due to treatment needs.



Glideaway beds for families

Thanks to the money raised through the Wrexham Children's Ball in previous years, the Children's Ward at Wrexham Maelor Hospital were able to fund Glideaway beds for family members or carers of patients to sleep on whilst their children or young loved ones are on the ward.

The beds, which together cost £9,540, can fold up to be compact, helping with storage on the ward, but when unfolded become full single beds allowing a parent or carer to sleep next to their children.

The beds have been a huge help to families who are worried about their young children, and to children who are often nervous about staying in hospital.

Ysbyty Gwynedd Bereavement Suite

In 2020, around 4,500 babies in the UK were stillborn or died within four weeks of their lives. Many families don't know this is going to happen, and some don't have anywhere to go and spend time with their babies. The Bereavement and Special Care Baby Unit teams at Ysbyty Gwynedd wanted to change this and create a family-friendly, homely space for parents to spend precious time with their babies.

The new bereavement suite at the hospital is located on the Midwifery Led Unit on a quiet corridor and is now kitted out with a full wet room, kitchenette and bedroom with a CuddleCot for babies who have sadly passed away.

Having an allocated suite makes a huge difference to families who are going through an incredibly difficult time. Thanks to the efforts of staff and supportive families, the new bereavement suite has been fully funded by the charity, at a cost of £16,716.34.

Legacy gifts

People remembering healthcare services in their wills leave a lasting legacy for patients and their families.

The NHS in North Wales is fortunate to be remembered by so many people each year who choose to support a hospital, healthcare service or priority programmes in their wills. Legacy gifts help fund research, cutting-edge equipment and special projects. The legacy of those who include a healthcare service in their will can be felt for many years by patients and staff who benefit from their generosity.

In 2023/24, the charity received a total of £679,000 in legacy gifts, making a huge difference to patients and services across North Wales.

One legacy provided almost £40,000 worth of support towards the new Community Audiology Vehicle project, which aims to support rural communities with accessing their audiology appointments.

All legacies, large and small, help make a difference for patients.

Gifts in Kind

Gifts in kind don't just demonstrate how very kind North Wales' communities are; they put smiles on patients' brave faces.

Organisations across the UK are kind enough to donate gifts to hospitals during festive periods or to help with special projects. During 2023/24, the charity received Gifts in Kind worth £21,378.21 for the benefit of patients and staff. This figure is considerably higher than the 2022/23 value of Gifts in Kind, which stood at £1,859. A new system for recording Gifts in Kind was introduced during the 2023/24 year which has made the process simpler for staff who are registering these gifts.

All donated items and services, including food, toys, gardening supplies and other equipment are:

- Recorded and reported
- Reviewed by infection prevention and/or all relevant internal service teams so all necessary risk assessments can be completed in advance of receipt
- Appropriately acknowledged so those donating receive the recognition they deserve

A huge thank you goes to all of those individuals and organisations who have been kind enough to support BCUHB services throughout the year. Your generosity has helped provide items that are over and above for patients, their families and staff.

Easter 2023

At Easter, wards and departments are very grateful to receive lots of donations from individuals and organisations to help patients and staff celebrate the occasion. Across the Health Board, we received hundreds of Easter eggs for patients which were all distributed across the areas they were given to.

Sian Eluned Flinn donated 40 Easter eggs to the Hergest Unit at Ysbyty Gwynedd, and 26 boxes of biscuits to staff across the hospital. Supermarkets such as Tesco and Morrisons also donated large numbers of Easter eggs to multiple hospitals, and businesses like Allington Hughes Law supported patients in Wrexham Maelor Hospital with a gift of 50 Easter eggs.



Starbucks x NHSCT

In 2023, the charity were chosen as a partner for Starbucks' National Free Coffee Day on 5th December thanks to a partnership with NHS Charities Together. Healthcare services in Gwynedd and Anglesey were gifted more than £7,000 worth of Starbucks ready-to-go drinks to help encourage staff to take a break, and to give them a treat whilst working!



Janet Bell

Local artist Janet Bell has donated a beautiful piece of original artwork for the new Bereavement Suite at Ysbyty Gwynedd. The Bereavement Team at Ysbyty Gwynedd have been working hard throughout 2023 to raise funds to create a new bereavement suite in the hospital for families who sadly lose their babies due to stillbirth or in the first 28 days of life.

The piece of artwork will make the new suite feel more homely for families who wish to spend time with their baby. The new suite is located on a quiet corridor and has been fully furnished with a double bedroom, full wet room and a kitchenette for families to use. The bedroom also has plenty of room for a CuddleCot so families can spend precious time with their baby.

Scamp and Dude Clothing



Clothing company Scamp and Dude donated 100 of their 'Super Scarves' to the Star Box Fund, which offers patients who have just received a cancer diagnosis and are receiving treatment on the Shooting Star Unit a special box of comforting goodies to support them at what can be a very challenging time.

For every Super Scarf that Scamp and Dude sell, they donate another scarf to a cancer patient to help them with their chemotherapy treatment. The scarves form part of the Star Box, launched in 2023 by nursing staff and a group of former patients. The boxes, which are funded entirely through the charity, include items such as information leaflets, a poetry book, puzzles and pens, chocolates, a mug, warm socks or gloves.

Christmas 2023

Wards across the Health Board are extremely lucky to receive large donations of Christmas gifts throughout the festive period. Throughout December 2023, wards across the Health Board received over £5,000 worth of Christmas presents to give out to patients in hospital in December.

Some incredible donations were received from Wrexham Police Football Club, DPD, Kellogg's and Mainetti UK. Generous community minded people and grateful patients, including Robert McDonagh and Christina Silvestri, also donated gifts and advent calendars. Staff on wards and departments were treated to boxes of chocolates and biscuits from kind spirited people from across North Wales, and were extremely grateful for these gifts.



Special events held this year have made it an especially memorable time for lots of patients, service-users, health service teams and the charity's supporters.

Here are just some examples of events that took place in 2023/24:

NHS 75th Anniversary

Wednesday 5th July 2023 marked the 75th Anniversary of the NHS and Health Board staff celebrated this incredible milestone across the whole of North Wales with fundraising and appreciation events. More than 40 tea parties took place on the day in hospitals and community services. The charity provided patients, staff, volunteers and supporters with tea and cake to help them celebrate this milestone event.



Celebrations continued into the evening with the #NHSBigZip! 264 staff members took on the world's fastest zip line at Zip World Bethesda which raised more than £20,000 for priority projects, wards and departments across the region. Special thanks must go to Cor Law yn Llaw, Zoe McDonald, Radio Ysbyty Gwynedd, Phil Hen Photography, Victor Pennington Videography and Mandy Jones for their support on the evening providing great music, live coverage and speeches.



Throughout the month of June, a card competition was held on the Children's Wards across North Wales to mark the 75th Anniversary. Over 40 children took part in the competition. Madeline Cooper, aged 7, who drew her design whilst she was a patient on the Children's Ward in Ysbyty Glan Clwyd was selected as the well deserving winner.



Team Irfon swim

The #TeamIrfon Fund was created following Irfon Williams' bowel cancer diagnosis to help raise funds for important extra support for patients on the Ward. Since 2014 #TeamIrfon supporters have been completing swims around the Bangor and Anglesey area, and have raised over £30,000 doing so, with 2023 being no exception, raising a huge amount to fund a new cold cap on Alaw Ward.

23 swimmers started their challenge from Beaumaris Pier and swam 2 miles in open water to Bangor Pier in under an hour. Friends and family greeted the swimmers at Bangor Pier to congratulate them on completing the swim. Irfon sadly passed away in 2017. His friends and family have continued raising funds for #TeamIrfon in his memory, and have together raised more than £250,000 since the fundraiser began a decade ago.



Wrexham Children's Ball: A Night To Remember

The Wrexham Children's Ball – 'A Night To Remember' – was held in March 2024 to help raise vital funds for the Wrexham Maelor Children's Ward and the Children's Community Service. The Children's Ward comprises of a 22-bed inpatient ward, emergency admissions unit, day care unit and a large outpatients department caring for children up to 18 years of age. Patients receive treatment from a variety of specialist services within the Children's Ward, including high dependency, oncology and chronic conditions such as diabetes, cystic fibrosis and asthma.

Thanks to generous sponsor SP Energy Works and SG Estates, the Ball was a huge success, raising more than £17,000. Almost 200 guests attended the event at Carden Park Hotel and Spa to help raise much-needed funds to support children accessing care and treatment at Wrexham Maelor Hospital. Staff and volunteers have raised more than £70,000 through organising memorable balls in recent years, which has helped fund new equipment and additional specialist services.



We're so grateful to all from the business community who have supported the charity this year.

Each year, NHS services in North Wales are fortunate to be chosen by businesses and organisations to be charity partners. Corporate supporters help boost support for wards and services by organising events and activities to fund much-needed projects to enhance the care patients receive. We're incredibly grateful to all businesses that have chosen to support wards and services this year, including:

- Adra, which organised a Christmas Carol Concert in Bangor Cathedral in December 2023. This special event raised money for the Renal Unit in Ysbyty Gwynedd in memory of Adra employee Dylan Edwin, who passed away in 2023.
- Qioptiq selected the charity as a priority of the year, raising £750 through various activities carried out through the year
- The Health Board's Staff Achievement Awards Sponsors:
 - Centerprise International: Principal Sponsor
 - Bangor University: Research, Transformation, Improvement and Innovation Award
 - Health Education and Improvement Wales: Leadership Award
 - ID Medical: Extra Mile Award
 - Unite Union: Rising Star Award
 - Clwyd Recruitment Solutions: Teams of the Year Award
 - Agoriad: Diversity, Equality and Inclusion Award
 - Medacs Healthcare: Table sponsor
- Wrexham Children's Ball sponsors
 - SP Energy Works: Principal Sponsor
 - SG Estates: Reception Sponsor



The Structure of the Charity

Charitable Funds Committee

Operational responsibility for the administration of the charity is delegated to a Charitable Funds Committee, a committee of the full Health Board. The Charitable Funds Committee Terms of Reference can be viewed here: bcuhb.nhs.wales/about-us/committees-and-advisory-groups/board-committees/charitable-funds-committee/10bcfc-tornovember-2024pdf/.

Purpose

The purpose of Betsi Cadwaladr University Health Board's Charitable Funds Committee is to make and monitor arrangements for the control and management of the Health Board's Charitable Funds, held within the charity. All voting members of the Health Board act as the corporate trustee of the charity. The committee meets quarterly.

Membership

Name	Position	Charitable Funds Committee Attendance 2023/24
Cllr Dyfed Jones	Charitable Funds Committee Chair	<ul style="list-style-type: none"> • 04/07/23 • 03/10/23 • 11/01/24 • 23/01/24
Karen Balmer	Independent Member	<ul style="list-style-type: none"> • 04/07/23 • 03/10/23 • 11/01/24 • 23/01/24
Russell Caldicott	Interim Executive Director of Finance	<ul style="list-style-type: none"> • 04/07/23 • 03/10/23 • 11/01/24 • 23/01/24
Angela Wood	Executive Director Nursing and Midwifery	<ul style="list-style-type: none"> • 04/07/23 • 03/10/23
Gareth Evans	Acting Executive Director Therapies & Health Sciences	<ul style="list-style-type: none"> • 03/10/23
Rhian Watcyn Jones	Independent Member	<ul style="list-style-type: none"> • 11/01/24 • 23/01/24
Nick Lyons	Executive Medical Director / Deputy Chief Executive Officer	Did not attend the Charitable Funds Committee meetings in 2023/24

Charitable Fund Advisors

Health service staff act as guardians for designated funds which are identified to specific areas and/or services or wards, enabling staff to gain prompt access to funding. Every fund has at least one fund advisor, who acts as the authorised signatory on the fund for purchases up to £5,000 and receives monthly statements highlighting the income and expenditure on the fund. Fund advisors are responsible for ensuring the expenditure they authorise from their funds is appropriate and fits in with the objects of the fund and the Charity. Fund Advisors, who are expected to complete a Fund Advisor Accountability Agreement on an annual basis, are also responsible for ensuring that their designated fund is never in a deficit position.

Charitable Support Team

The Charity's Support Team is focussed on streamlining its processes and develop relationships with other teams within the Health Board and with charitable partners and supporters to ensure it can provide the highest possible level of donor and partner care.

Finance, fundraising and engagement, communications and administrative support staff make up the charity's support team. It is in place to ensure that the charity can efficiently meet its objectives. The responsibilities of the charity support team are varied and include:

- Managing the charity's finances, investment portfolio, and grant programmes effectively
- Providing direction and practical help to the charity's Fund Advisors, who are the custodians of the charity's designated funds
- Offering help, advice, and encouragement to fundraisers who generously choose to organise events and activities in favour of the charity to ensure that they have a positive experience
- Raising the charity's profile in hospitals and the community so that more people are motivated to donate, fundraise, or volunteer
- Communicating well with supporters and the wider community, from direct communication with fundraisers to broad messaging via social media
- Reclaiming Gift Aid to increase the value of donations to the charity
- Supporting independent charities – such as the Leagues of Friends – who provide additional direct philanthropic contributions to BCUHB, adding value to the Health Board's and charity's work

From 2023/24 the team now includes the 68 Welcome Volunteers and two coordinators who oversee this invaluable service.

Looking ahead

The Charity is going through a process to develop a 2024–2027 strategy and operational plan which aligns with the Integrated Three-Year Plan for the period 2024 to 2027 Integrated Plan, which will be developed under the leadership of a new Chair and Chief Executive Officer, supported by a substantial change in Board membership. The aim of that plan is to signal a clear ambition to drive through transformation and improvement and provide high quality and sustainable services for the people of North Wales.

In 2024/25 it is expected that the Charitable Support Team will:

- Work with the Charitable Funds Committee to draw up this new Charity strategy
- Revise the team's operational plan to support this new charity strategy
- Embed the Welcome and Support Volunteering Service into the Health Board
- Review the existing charity procedures and grant management processes to streamline activity where possible

Governance

Linked charities

The charity's registration incorporates a linked charity, the North Wales Cancer Appeal (NWCA). A very active group, NWCA volunteers work alongside NHS staff in the North Wales Cancer Treatment Centre and raise additional funds for priority projects that benefit patients and families affected by cancer.

Trustee recruitment, appointment and induction

The charity has a sole Corporate Trustee, the Betsi Cadwaladr University Health Board (BCUHB). Whilst BCUHB Members undertake responsibility for the administration of the charity's funds as part of their tenure of the Board, they do not hold trustee status as individuals. The Chair and Independent Members of the Health Board are appointed by the Minister for Health and Social Services of the Welsh Government, with the Executive Directors being appointed in accordance with Health Board policy. New members of the Board are provided with appropriate induction and training on behalf of the Executive Director of Finance. Orientation documentation provided for new members includes the previous year's annual reports and financial statements, copies of the charity's governing documents, and relevant Charity Commission publications.

Charity staff

The charity does not directly employ any staff. The day-to-day management of the charity is delegated to the Executive Director of Finance. Members of the Charitable Support Team are employed by the Health Board and then recharged to the charity in accordance with the proportion of their time that has been spent on charity work.

Key management personnel remuneration

The trustees have concluded that the Corporate Trustee through the Charitable Funds Committee comprises the key management personnel of the charity as they are in control of directing the charity.

The charity does not make any payments for remuneration nor to reimburse expenses to the charity trustees for their work undertaken as trustee. Trustees are required to disclose all relevant interests, register them with the Health Board and withdraw from decisions where a conflict of interest arises. All related party transactions are disclosed in note 2 to the accounts.

The charity's advisors

Bankers: NatWest Bank, 5 Queen St, Rhyl, Denbighshire, LL18 1RS

Investment advisors: Brewin Dolphin, Time Central, Gallowgate, Newcastle upon Tyne, NE1 4SR

Registered auditors: Wales Audit Office, 1 Capital Quarter, Tyndall Street Cardiff, CF10 4BZ

The charity's investments

Many of the donations received by the charity cannot be spent right away since they must be accumulated, in order to fund the most pressing and relevant items to improve patient care. As a result, the charity invests these contributions in order to earn income and protect their real-world worth. During the financial year 2023/24, Brewin Dolphin Limited was the charity's investment manager.

Ethical investment framework

The Trustee has adopted an ethical framework for investments, with underlying principles supporting an ethical component of the overall investment strategy.

The current Ethical Investments Policy states:

It is recommended that there is negative exclusion of investment in companies manufacturing and distributing:

- Alcoholic products;
- Tobacco products; and
- Any products which may be considered in conflict with the Health Board's activities.

Investment in companies:

- Which have a poor record in human rights and child exploitation;
- Which derive their profits from countries with poor human rights records should not be permitted. In addition, investment in companies that demonstrate compliance with the principles of the Equality Act 2010 should be supported.

The Trustee reserves the right to exclude any investments in companies which they judge might prove damaging, directly or indirectly, to the purposes or reputation of the Charity.

Investment strategy

The Ethical Framework has given direction to the Investment Managers to develop a suitable investment strategy. The investment strategy is consistent with these ethical principles, whilst affording sufficient flexibility to provide the best balance of risk and reward for the charity.

During the financial year 2023/24, the portfolio was managed in accordance with this agreed strategy.

Investment performance is monitored by the Charitable Funds Committee at its quarterly meetings. The committee receives reports from the investment managers explaining the portfolio's performance, the level of risk seen and expectations for the future.

BCUHB Board Membership 2023/24

The Health Board's Board membership is presented in the table at Appendix 1.

Performance

The overall goal of the charity is to benefit staff and patients at Betsi Cadwaladr University Health Board in accordance with the preferences of supporters. The Charitable Funds Committee approves an operational budget on an annual basis, and reviews the activity of the Charitable Support Team on a quarterly basis in formal Committee meetings. The Committee papers are published on the Health Board website ([Charitable Funds Committee – Betsi Cadwaladr University Health Board](#)) and the meetings are open for the members of the public to attend.

Connecting with staff

To accomplish its goal, the Charity Support Team prioritises actions that promote awareness among Health Board employees, assisting them to learn about fundraising and the money accessible to them from the charity. The team also focuses on simplifying the methods for raising and applying for money, as well as empowering staff to innovate and utilise existing funding (or, in the absence of funding, to proactively raise the necessary monies) to help them to implement their ideas. The charity continues to embrace technology, including video conferencing, to stay connected with staff.

Applying for funding and evaluating requests for funding

Applicants must outline their proposed project's outputs and outcomes, and how these will be measured in order to be considered for funding. They must also show that they have assessed the risks and investigated mitigating factors. All grant applicants must show how their plan would help to reduce health inequalities.

Projects costing less than £5,000 can be authorised by a Fund Advisor – the colleagues that act as guardians for their designated funds – thus enabling NHS staff to gain prompt access to funding. Because of this, staff can quickly implement their ideas, meaning the tangible positive differences they wish to achieve for their patients or colleagues can be realised almost immediately.

There is a formal application and scrutiny process for requests for funding. The application process is designed to be accessible, whilst ensuring projects receive rigorous scrutiny to ensure they are robust, innovative, and realistically able meet the objectives set out by the applicant. To ensure that the charity's money is well spent and meets with its objectives, all applications for grants over £5,000 require authorisation from the Charitable Funds Committee. The procedures all staff must follow when applying for funding can be found here: [Your charity procedures – June 2024](#).

Charitable activity

The Charity does not make grants to individuals. Grants are made to the Betsi Cadwaladr University Health Board to provide for the care of NHS patients in furtherance of our charitable aims. The Trustees operate a scheme of delegation for the charitable funds, under which fund advisors manage the day to day disbursements on their projects, in accordance with the directions set out by the Trustees in the Charity Standing Financial Instructions. A list of what can and can't be funded through the charity is available for all staff and supporters here: [What should your NHS Charity fund and what shouldn't it fund?](#).

Complaints

The Charitable Support Team did not uncover any failure to comply with Fundraising Regulation by staff or volunteers in 2023/24. The charity received no official fundraising-related complaints in the past year.

Public benefit

In planning activities for the year, and when considering applications for grant funding, the trustees consider the Charity Commission's guidance on public benefit.

The charity's grant-making process

Both restricted and unrestricted funds are used to make grants through the charity. These funds are further split into non-designated (general) funds and designated (earmarked) funds.

Non-designated funds

Few wards, services and departments do not have a designated fund for their healthcare area. The Charitable Support Team can provide support to establish one, or funding can be requested from the charity's non-designated fund.

When donors give to the charity without specifying where they want the money to go, it is assigned to the charity's non-designated fund. These donations are important, even though they are in the minority. This is because they allow BCUHB staff who do not have their own fund, or who do not have enough money in their designated fund, to still get support from the charity. Non-designated donations are directed to priority projects. Without a doubt, all donations from the public help dedicated NHS staff in hospitals and in communities across North Wales to go over and above for their patients, offering the very best care and treatment available.

The Finance Director – Operational acts as the Fund Advisor on non-designated funds and so can authorise expenditure up to £5,000. Non-designated funds have been decreasing in value significantly over recent years. This is an ongoing challenge for the charity as it limits the things that can be funded where there is no suitable designated fund.

Designated funds

Within the charity, most donations sit in one of the 400 plus designated funds, representing almost every BCUHB ward, service, department and project across North Wales.

Designated funds are aligned with specific wards, departments or services and the money held within them can only be used to benefit the associated healthcare area. When a new fund is established, an objective is set and at least two Fund Advisors named. It is the responsibility of Fund Advisors to ensure that expenditure from their designated funds contributes to the stated objectives. Fund Advisors have an in-depth understanding of their ward, service or department. The role is fulfilled by staff at the heart of the NHS – people like Ward Managers, Consultants and Matrons – and they use their knowledge to inform their fundraising and decisions about charitable expenditure. This helps to make sure that designated funds have the greatest possible impact on patients and NHS staff. When you donate to a designated fund, it goes straight to that healthcare area and is made available for multidisciplinary clinical teams to use towards projects and priorities decided at the ward level.

Fund Advisors are the authorised signatories on the fund for purchases up to £5,000. Fund Advisors receive monthly statements outlining the income and expenditure on the fund. For all expenditure over £5,000, a scheme of delegation is in place whereby additional approvals are required from the senior team for that area in the Health Board and the Charitable Funds Committee. This ensures that applications are fully reviewed and assessed alongside the objectives of the charity.

Financial summary

The following figures are taken from the full accounts approved on [insert date], which carry an unqualified audit report. The accounts should be viewed in full if more details are required. This part of the Trustee's annual report comments on key features of those accounts. The full accounts have also been logged with the Charity Commission. Almost all of the charity's income comes from the voluntary efforts of NHS staff and the general public.

This year, total donations were £0.90 million, 39% of the charity's total income. Legacy gifts formed 29% of the charity's income (£0.68 million). Income from charitable activities was £0.22 million, 9% of the total income received. Fundraising accounted for 13% of the charity's total income (£0.30 million). Investment of funds not immediately required by the charity has generated £0.22 million in returns, equating to 10% of the charity's total income.

Financial health

The assets and liabilities of the charity as at 31st March 2024 are shown below, compared with the position at 31st March 2023. Find further details in the financial statements section.

Balance Sheet as at 31 March 2024

		Unrestricted funds	Restricted Income funds	Total 31 March 2024	Total 31 March 2023 (Restated) £000
	Note	£000	£000	£000	
Fixed assets:					
Tangible assets	14	150	0	150	150
Investments	15	4,214	6,818	11,032	9,827
Total fixed assets		4,364	6,818	11,182	9,977
Current assets:					
Debtors	16	780	1,219	1,999	1,684
Cash and cash equivalents	17	487	758	1,245	1,484
Total current assets		1,267	1,977	3,244	3,168
Liabilities:					
Creditors: Amounts falling due within one year	18	(313)	(490)	(803)	(900)
Net current assets		954	1,487	2,441	2,268
Total assets less current liabilities		5,318	8,305	13,623	12,245
Creditors: Amounts falling due after more than one year	18	(32)	(49)	(81)	(444)
Total net assets		5,286	8,256	13,542	11,801
The funds of the charity:					
Restricted income funds	21	0	8,256	8,256	7,352 *
Unrestricted funds	21	5,271	0	5,271	4,434 *
Revaluation reserve		15	0	15	15
Total funds		5,286	8,256	13,542	11,801

*The comparative figures as at 31 March 2023 have been restated to correct the classification of restricted grants received from unrestricted funds. Unrestricted and restricted expenditure has also been amended for restricted grant monies spent. These adjustments impacted on the balances of restricted income and unrestricted funds at 31 March 2023.

The notes on pages 37 to page 53 form part of these accounts.

Signed :

Name : Dyfed Jones (Chair of Charitable Funds Committee)

Date : 30 January 2025

Risk analysis

As part of the Charitable Funds Committee meetings that take place at least four times a year, the trustees consider the risks facing the charity.

All charitable funding applicants are expected to review the risks associated with the funding request, and include the risks on their funding submissions.

Managing risk

The risks to the charity are reviewed regularly. The charity's Risk Register can be viewed here: [Charitable Funds Committee – Betsi Cadwaladr University Health Board](#). Individual risk analysis is completed for all charity events and activities, for new processes and ways of working introduced by members of the Charitable Support Team, and for funding applications submitted by Health Board staff.

Reserves

Reserves are the charity's unrestricted income funds that are freely available to spend on any of the charity's purposes.

A good reserves policy gives confidence to stakeholders that the charity's finances are being managed and provides an indicator of future funding needs and its overall resilience.

The reserves policy takes into account the charity's financial circumstances and other relevant factors. Deciding on the level of reserves that a charity needs to hold is an important part of financial management and forward planning. Reserves levels which are higher than needed may tie up money unnecessarily. If reserves are too low, then the charity's solvency and its future activities can be put at risk.

The charity, drawing on Charity Commission guidance and examples of best practice from other charities, has adopted a reserves policy that includes a target level of reserves. As is good practice, the reserves policy is kept under review to ensure it meets the changing needs and circumstances of the charity.

The Charitable Funds Committee reviews the charity's Reserves Policy and the target level of reserves annually. In March 2024, it was agreed that the target level of reserves would be set using a calculation based on the budgeted levels of expected expenditure (operational and grants activity) for the next three years and the average value of investments held over the last three years.

The charity's target level of reserves is based on the following calculation:

- One year's future operational costs based on the average value from budgets and plans for the next three years; plus
- Nine month's (75% of the annual) charitable activity (grants) expenditure based on the average value from budgets and plans for the next three years; plus

- 25% of the average value of investments held based on their valuation at 31 March in the previous three years.

The target levels of reserves for 31 March 2024 is calculated as £4.1 million (2023 – £3.8 million).

Total funds of the Charity at 31 March 2024 were £13.54 million (2023: £11.80 million) of which £8.26 million is restricted and £5.28 million is unrestricted (2023: £7.11 million and £4.69 million). The Charity is holding reserves of £5.28 million which are higher than the target value of £4.10 million.

The unrealised investment gains during 2023–24 of £1.05 million have contributed to the higher reserves level at 31 March 2024. During 2022–23 the unrealised element of movement on investments held during that year were losses of £0.70 million.

Some of the charity's reserves can only be realised by disposing of land held as tangible fixed assets (see tangible fixed assets, note 14 in the Accounts).

Accounts for the year ended 31 March 2024

FOREWORD

The accounts (financial statements) have been prepared in accordance with the Statement of Recommended Practice: Accounting and Reporting by Charities preparing their accounts in accordance with the Financial Reporting Standard applicable in the UK and Republic of Ireland (FRS 102) second edition issued October 2019 and applies to reporting periods beginning on or after 1 January 2019.

STATUTORY BACKGROUND

The Betsi Cadwaladr University Health Board is the corporate trustee of the charity under paragraph 16c of Schedule 2 of the NHS and Community Care Act 1990.

The Trustees have been appointed under s11 of the NHS and Community Care Act 1990.

Awyr Las, the working name of the Betsi Cadwaladr University Health Board Charity and other related Charities, is a registered charity and is constituted under a trust deed dated 23rd September 2010. Within the charity group registration there are two linked charities:

- Betsi Cadwaladr University Health Board Charity; and
- North Wales Cancer Appeal.

MAIN PURPOSE OF THE FUNDS HELD ON TRUST

The main purpose of the charity is to apply income for any charitable purposes relating to the National Health Service wholly or mainly for the services provided by the Betsi Cadwaladr University Health Board.

Statement of Financial Activities for the year ended 31 March 2024

		Unrestricted funds £000	Restricted Income funds £000	Total Funds 2023-24 £000
	Note			
Incoming resources from generated funds:				
Donations and legacies	3	783	797	1,580
Charitable Activities	3	12	204	216
Other trading activities	5	226	70	296
Investments	6	116	108	224
Total incoming resources		1,137	1,179	2,316
Expenditure on:				
Raising Funds	7	147	144	291
Charitable activities	8	658	674	1,332
Total expenditure		805	818	1,623
Net gains on investments	15	505	543	1,048
Net income		837	904	1,741
Transfer between funds	20	0	0	0
Other recognised gains and losses				
Gains / (losses) on revaluation of fixed assets	14	0	0	0
Net movement in funds		837	904	1,741
Reconciliation of funds				
Total funds brought forward	21	4,449	7,352	11,801
Total funds carried forward		5,286	8,256	13,542

Statement of Financial Activities for the year ended 31 March 2023

		Unrestricted funds (Restated) £000	Restricted Income funds (Restated) £000	Total Funds 2022-23 (Restated) £000
Incoming resources from generated funds:				
Donations and legacies	3	639 *	554	1,193 *
Charitable Activities	3	7 *	356 *	363 *
Other trading activities	5	150	60	210
Investments	6	98	96	194
Total incoming resources		894 *	1,066 *	1,960
Expenditure on:				
Raising Funds	7	146	149	295
Charitable activities	8	881 *	608 *	1,489
Total expenditure		1,027 *	757 *	1,784
Net losses on investments	15	(350)	(352)	(702)
Net income expenditure		(483) *	(43) *	(526)
Transfer between funds	20	(458)	458	0
Other recognised gains and losses				
Gains / (losses) on revaluation of fixed assets	14	0	0	0
Net movement in funds		(941) *	415 *	(526)
Reconciliation of funds				
Total funds brought forward	21	5,390	6,937	12,327
Total funds carried forward		4,449 *	7,352 *	11,801

*The comparative figures for the year ended 31 March 2023 have been restated to reflect the disclosure of income from charitable activities which was previously recorded as donations, and to correct the classification of restricted grants received from unrestricted funds. Expenditure on charitable activities has also been amended to reclassify restricted grant monies spent. These adjustments impacted on the balances of net movement in funds in the year between unrestricted and restricted funds and also the balances of funds carried forward at 31 March 2023.

Balance Sheet as at 31 March 2024

		Unrestricted funds	Restricted Income funds	Total 31 March 2024	Total 31 March 2023 (Restated)
	Note	£000	£000	£000	£000
Fixed assets:					
Tangible assets	14	150	0	150	150
Investments	15	4,214	6,818	11,032	9,827
Total fixed assets		4,364	6,818	11,182	9,977
Current assets:					
Debtors	16	780	1,219	1,999	1,684
Cash and cash equivalents	17	487	758	1,245	1,484
Total current assets		1,267	1,977	3,244	3,168
Liabilities:					
Creditors: Amounts falling due within one year	18	(313)	(490)	(803)	(900)
Net current assets		954	1,487	2,441	2,268
Total assets less current liabilities		5,318	8,305	13,623	12,245
Creditors: Amounts falling due after more than one year	18	(32)	(49)	(81)	(444)
Total net assets		5,286	8,256	13,542	11,801
The funds of the charity:					
Restricted income funds	21	0	8,256	8,256	7,352 *
Unrestricted funds	21	5,271	0	5,271	4,434 *
Revaluation reserve		15	0	15	15
Total funds		5,286	8,256	13,542	11,801

*The comparative figures as at 31 March 2023 have been restated to correct the classification of restricted grants received from unrestricted funds. Unrestricted and restricted expenditure has also been amended for restricted grant monies spent. These adjustments impacted on the balances of restricted income and unrestricted funds at 31 March 2023.

The notes on pages 37 to page 53 form part of these accounts.

Signed :

Name : Dyfed Jones (Chair of Charitable Funds Committee)

Date : 30 January 2025

Statement of Cash Flows for the year ending 31 March 2024

	Note	Total Funds 2023-24 £000	Total Funds 2022-23 £000
Cash flows from operating activities:			
Net cash (used in) / provided by operating activities	19	(306)	313
Cash flows from investing activities:			
Dividend, interest and rents from investments	6	224	194
Proceeds from the sale of investments	15	2,461	1,541
Purchase of investments	15	(2,834)	(1,805)
Decrease in cash awaiting investment	15	216	122
Net cash provided by investing activities		67	52
Change in cash and cash equivalents in the reporting period		(239)	365
Cash and cash equivalents at the beginning of the reporting period	17	1,484	1,119
Cash and cash equivalents at the end of the reporting period	17	1,245	1,484

Note on the Accounts

1 Accounting Policies

a) Basis of preparation

The financial statements have been prepared under the historic cost convention, with the exception of investments which are included at fair value.

The accounts (financial statements) have been prepared in accordance with the Statement of Recommended Practice: Accounting and Reporting by Charities preparing their accounts in accordance with the Financial Reporting Standard applicable in the UK and Republic of Ireland (FRS 102) second edition issued October 2019 and applies to reporting periods beginning on or after 1 January 2019. This edition consolidates the changes to the Statement of Recommended Practice (SORP) for Update Bulletins 1 and 2, the Charities Act 2011 and changes to UK Generally Accepted Practice since the launch of SORP (FRS102) on 16 July 2014, as it applies for reporting periods beginning on or after 1 January 2015.

The accounts (financial statements) have been prepared to give a 'true and fair' view and have departed from the Charities (Accounts and Reports) Regulations 2008 only to the extent required to provide a 'true and fair view'. This departure has involved following Accounting and Reporting by Charities preparing their accounts in accordance with the Financial Reporting Standard applicable in the UK and Republic of Ireland (FRS 102) issued on 16 July 2014 and as amended in the second edition issued October 2019.

The Trustees consider that there are no material uncertainties about the Charity's ability to continue as a going concern. There are no material uncertainties affecting the current year's accounts.

In future years, the key risks to the Charity are a fall in income from donations or investment income but the trustees have arrangements in place to mitigate those risks (see the risk management and reserves sections of the annual report for more information).

The Charity meets the definition of a public benefit entity under FRS 102.

b) Funds structure

Where there is a legal restriction on the purpose to which a fund may be put, the fund is classified either as:

- A restricted fund or
- An endowment fund.

Restricted funds are those where the donor has provided for the donation to be spent in furtherance of a specified charitable purpose. The Charity's restricted funds tend to result from appeals or legacies for specified purposes.

Endowment funds arise when the donor has expressly provided that the gift is to be invested and only the income of the fund may be spent. These funds are sub-analysed between those where the Trustees have the discretion to spend the capital (expendable endowment) and those where there is no discretion to expend the capital (permanent endowment). The charity has no permanent or expendable endowment funds.

Those funds which are neither endowment nor restricted income funds, are unrestricted income funds which are sub-analysed between designated (earmarked) funds where the Trustees have set aside amounts to be used for specific purposes or which reflect the non-binding wishes of donors, and unrestricted funds which are at the Trustees' discretion, including the general fund which represents the charity's reserves. The major funds held in each of these categories are disclosed in note 21.

c) Incoming resources

Income consists of donations, legacies, income from charitable activities and investment income.

Donations are accounted for when received by the charity. All other income is recognised once the charity has entitlement to the resources, it is probable (more likely than not) that the resources will be received and the monetary value of incoming resources can be measured with sufficient reliability.

Where there are terms or conditions attached to incoming resources, particularly grants, then these terms or conditions must be met before the income is recognised as the entitlement condition will not be satisfied until that point. Where terms or conditions have not been met or uncertainty exists as to whether they can be met then the relevant income is not recognised in the year and deferred and shown on the balance sheet as deferred income.

d) Incoming resources from legacies

Legacies are accounted for as incoming resources either upon receipt or where the receipt of the legacy is probable, whichever falls sooner.

Receipt is probable when:

- Confirmation has been received from the representatives of the estate(s) that probate has been granted
- The executors have established that there are sufficient assets in the estate to pay the legacy and
- All conditions attached to the legacy have been fulfilled or are within the charity's control.

If there is uncertainty as to the amount of the legacy and it cannot be reliably estimated then the legacy is shown as a contingent asset until all of the conditions for income recognition are met.

e) Resources expended and irrecoverable VAT

All expenditure is accounted for on an accruals basis and has been classified under headings that aggregate all costs related to each category of expense shown in the Statement of Financial Activities. Expenditure is recognised when the following criteria are met:

- There is a present legal or constructive obligation resulting from a past event
- It is more likely than not that a transfer of benefits (usually a cash payment) will be required in settlement
- The amount of the obligation can be measured or estimated reliably.

Irrecoverable VAT is charged against the category of resources expended for which it was incurred.

f) Recognition of expenditure and associated liabilities as a result of grants

Grants payable are payments made to linked, related party or third party NHS bodies and non NHS bodies, in furtherance of the charitable objectives of the funds held on trust, primarily relief of those who are sick.

Grant payments are recognised as expenditure when the conditions for their payment have been met or where there is a constructive obligation to make a payment.

A constructive obligation arises when:

- We have communicated our intention to award a grant to a recipient who then has a reasonable expectation that they will receive a grant.
- We have made a public announcement about a commitment which is specific enough for the recipient to have a reasonable expectation that they will receive a grant.
- There is an established pattern of practice which indicates to the recipient that we will honour our commitment.

The Trustees have control over the amount and timing of grant payments and consequently where approval has been given by the Trustees and any of the above criteria have been met then a liability is recognised.

Grants are not usually awarded with conditions attached. However, when they are those conditions have to be met before the liability is recognised.

Where an intention has not been communicated, then no expenditure is recognised but an appropriate designation is made in the appropriate fund. If a grant has been offered but there is uncertainty as to whether it will be accepted or whether conditions will be met then no liability is recognised but a contingent liability is disclosed.

g) Allocation of support costs

Support costs are those costs which do not relate directly to a single activity. These include staff costs, costs of administration, internal and external audit costs. Support costs have been apportioned between fundraising costs and charitable activities on an appropriate basis. The analysis of support costs and the bases of apportionment applied are shown in note 11.

h) Fundraising costs

The costs of generating funds are those costs attributable to generating income for the charity, other than those costs incurred in undertaking charitable activities or the costs incurred in undertaking trading activities in furtherance of the charity's objects. The costs of generating funds represent fundraising costs together with investment management fees. Fundraising costs include expenses for fundraising activities and a fee paid to a related party, the Health Board, under a fundraising agreement. The fee is used to pay the salaries and overhead costs of the Health Boards' fundraising office.

i) Charitable activities

Costs of charitable activities comprise all costs incurred in the pursuit of the charitable objects of the charity. These costs, where not wholly attributable, are apportioned between the categories of charitable expenditure in addition to the direct costs. The total costs of each category of charitable expenditure include an apportionment of support costs as shown in note 8.

j) Tangible assets

Tangible fixed assets are stated at cost less accumulated depreciation and accumulated impairment losses. Cost includes the original purchase price (or value of the asset on a full replacement cost basis if donated), costs directly attributable to bringing the asset to its working condition for its intended use, dismantling and restoration costs. Tangible fixed assets are capitalised if they are capable of being used for more than one year and have a cost equal to or greater than £5k.

Land is stated at open market value. Valuations are carried out by a professional valuer at least every five years with an impairment review undertaken in all other years. No depreciation is applied to land.

Tangible fixed assets are derecognised on disposal or when no future economic benefits are expected. On disposal, the difference between the net disposal proceeds and the carrying amount is recognised in the Statement of Financial Activities (SoFA).

k) Investments

Investments are a form of basic financial instrument. Fixed asset investments are initially recognised at their transaction value and are subsequently measured at their fair value (market value) at the balance sheet date. The Statement of Financial Activities includes the net gains and losses arising on revaluation and disposals throughout the year. The SORP states the market value that reasonably reflects how the market could be expected to price the asset at the Balance Sheet date be used in valuing stocks and shares. Investments are included in the Balance Sheet at the middle market price at the close of business on the valuation date as quoted by the Investment Managers, Brewin Dolphin.

The main form of financial risk faced by the charity is that of volatility in equity markets and other investment markets due to wider economic conditions, the attitude of investors to investment risk and changes in sentiment concerning equities and within particular sectors. Further information on the charity's investments can be found in note 15.

l) Debtors

Debtors are amounts owed to the charity. They are measured on the basis of their recoverable amount.

m) Cash and cash equivalents

Cash at bank and in hand is held to meet the day to day running costs of the Charity as they fall due. Cash equivalents are short term, highly liquid investments, usually in notice interest bearing savings accounts.

n) Creditors

Creditors are amounts owed by the Charity. They are measured at the amount that the Charity expects to have to pay to settle the debt.

Amounts which are owed in more than a year are shown as long term creditors.

o) Realised gains and losses

All gains and losses are taken to the Statement of Financial Activities as they arise. Realised gains and losses on investments are calculated as the difference between sales proceeds and opening carrying value (purchase date if later). Unrealised gains and losses are calculated as the difference between the closing and opening carrying values, adjusted for purchases and sales.

2 Related party transactions

During the year none of the Trustee's Representatives or members of the key management staff or their close relatives have undertaken any material transactions with the Betsi Cadwaladr University Health Board Charitable Funds.

Board Members (and other senior staff) take decisions both on Charity and Exchequer matters but endeavour to keep the interests of each discrete and do not seek to benefit personally from such decisions. Declarations of personal interest have been made in both capacities and are available to be inspected by the public.

The Charity has made grant payments for revenue and capital to the Betsi Cadwaladr University Health Board. Such payments are for specific items which are in furtherance of the Charity's objectives. The Betsi Cadwaladr University Health Board prepares its accounts in accordance with the Government Financial Reporting Manual (FReM) and International Financial Reporting Standards (IFRS), whereas the Charity prepares its accounts in accordance with FRS 102. The Charity, therefore, recognises a constructive obligation when it awards a grant, whereas the Health Board recognises it when the grant is received. This creates a timing issue as the Charity recognises expenditure before the Health Board does.

In its accounts and under FRS 102, the Charity recognises that it has made grant payments to Betsi Cadwaladr University Health Board totalling £1.23m (2022-23: £1.38m). Under the FReM and IFRS, grant payments to the Betsi Cadwaladr University Health Board totalled £1.66m (2022-23: £1.16m). The Charity reported liabilities with the Health Board as at 31st March 2024 of £0.16m (2022-23: £0.26m) which was paid in April 2024.

The audited accounts of Betsi Cadwaladr University Health Board are included in their annual report and accounts and are available from their website.

All Board members are required to declare any interest they have that could affect their impartiality with regard to their work within the Charity and Health Board. Declarations are also required where an individual Board member does not have any interests to declare.

The declarations made by Directors and Board Members for 2023/24 are published below and are available on the Health Board's website at <https://bcuhb.nhs.wales/about-us/health-board-meetings-and-members/health-board-members/>

In addition to the Directors and Board Members, details are also included below for senior members of staff who attend the Charitable Funds Committee meetings and who may be in a position of influence over charitable funds. Except for the transactions listed below, the Charity did not have financial transactions with any other organisation recorded as a Declaration of Interest by Board Members during 2023-24 and considered to be a related party.

Name	Details of positions held during the financial year	Dates positions held	Details of interest declared
K Balmer CPFA	Independent Member	01/04/23 – 31/03/24	Group CEO – Groundwork North Wales, Refurbs Flintshire & Wild Ground
Professor M Larvin	Independent Member	10/04/23 – 31/03/24	Employee of Bangor University
Councillor D Jones	Independent Member	22/05/23 – 31/03/24	Elected Member of Anglesey County Council
F Roberts	Associate Member	01/04/23 – 31/03/24	Employee of Anglesey County Council
K Thomson	Head of Fundraising	01/04/23 – 31/03/24	Co-Deputy Chair – Association of NHS Charities (trading name NHS Charities Together) Volunteer and advisor – Love Hope Strength Foundation charity

Material transactions between the Charity and related parties disclosed during 2023-24 were as follows:	Expenditure with related party £'000	Amounts owed to related party £'000	Income from related party £'000	Amounts owed by related party £'000
Bangor University	7.4	1.0	4.0	0.0
Isle of Anglesey County Council	0.2	0.0	0.0	0.0
NHS Charities Together	1.0	0.0	114.0	0.0
Love Hope Strength Foundation	0.0	0.0	20.0	0.0
Groundwork North Wales	0.3	0.2	0.0	0.0

3 Incoming resources

a. Income from donations and legacies

	Unrestricted funds £000	Restricted Income funds £000	Total 2023-24 £000	Total 2022-23 (Restated) £000
Donations	783	118	901	741 *
Legacies	0	679	679	452
	783	797	1,580	1,193 *

b. Income from charitable activities

	Unrestricted funds £000	Restricted Income funds £000	Total 2023-24 £000	Total 2022-23 (Restated) £000
Grants	0	204	204	356 *
Course fees	12	0	12	7 *
	12	204	216	363 *

*The comparative figures for the year ended 31 March 2023 have been restated to reflect the disclosure of income from charitable activities which was previously recorded as donations.

4 Role of volunteers

Like all charities, the Betsi Cadwaladr University Health Board Charity is reliant on a team of volunteers for our smooth running. Our volunteers perform two roles:

- Fund advisors – Within the Charity there are 456 (2022-23: 449) designated funds which are identified to specific areas and/or services. Every fund has at least one fund advisor, who acts as the authorised signatory on the fund for purchases up to £5k and receives monthly statements as to the income and expenditure on the fund. Fund advisors are responsible for ensuring that the expenditure they authorise from their funds is appropriate and fits in with the objects of the fund and the Charity. They are also responsible for ensuring that their designated fund is never in a deficit position.
- Fundraisers – A number of volunteers actively support the Charity by running events such as coffee mornings, sponsored walks and sports tournaments, as well as supporting events directly organised by the charity.

In accordance with the SORP, due to the absence of any reliable measurement basis, the contribution of these volunteers is not recognised in the accounts.

5. Other trading activities

Income from other trading activities arises from fundraising events that are organised by the Charity, or by volunteers in aid of the Charity. These include events such as coffee mornings, cake bakes, sporting challenges and sponsored walks. The Charity generated £296k in income from other trading activities during the financial year (2022-23 £210k).

6. Gross investment income

	Unrestricted funds £000	Restricted Income funds £000	Total 2023-24 £000	Total 2022-23 £000
Fixed asset equity and similar investments	106	99	205	189
Short term investments, deposits and cash on deposit	10	9	19	5
	116	108	224	194

7. Analysis of expenditure on raising funds

	Unrestricted funds £000	Restricted Income funds £000	Total 2023-24 £000	Total 2022-23 £000
Fundraising office	107	108	215	229
Fundraising events	10	6	16	11
Investment management	18	18	36	34
Support costs	12	12	24	21
	147	144	291	295

8. Analysis of expenditure on charitable activity

	Grant funded activity £000	Support costs £000	Total 2023-24 £000	Total 2022-23 £000
Grants for NHS Capital expenditure	319	30	349	334
Staff education and welfare (including gift in kind)	233	27	260	513
Patient education and welfare	683	43	726	688
Medical research	(10)	7	(3)	(46)
	1,225	107	1,332	1,489

Gifts in kind worth £21k were received and used for the benefit of patients and staff in 2023-24 (2022-23 £2k).

9. Analysis of grants

The Charity does not make grants to individuals. All grants are made to the Betsi Cadwaladr University Health Board to provide for the care of NHS patients in furtherance of our charitable aims. The total cost of making grants, including support costs, is disclosed on the face of the Statement of Financial Activities and the actual funds spent on each category of charitable activity, is disclosed in note 8.

The Trustees operate a scheme of delegation for the charitable funds, under which fund advisors manage the day to day disbursements on their projects, in accordance with the directions set out by the Trustees in the Charity Standing Financial Instructions. Funds managed under the scheme of delegation represent ongoing activities and it is not possible to segment these activities into discrete individual grant awards. The Trustees make grant awards based on invited applications from Betsi Cadwaladr University Health Board.

10. Movements in funding commitments

	Current liabilities £000	Non-current liabilities £000	Total 31 March 2024 £000	Total 31 March 2023 £000
Opening balance at 1 April (see note 18)	596	444	1,040	741
(Decrease) / Increase in liabilities	(64)	(363)	(427)	299
Closing balance at 31 March (see note 18)	532	81	613	1,040

As described in notes 8 and 9, the charity awards a number of grants in the year. Many grants are awarded and paid out in the same financial year, however some grants, especially those relating to research and development or for funding specific posts, are multi-year grants paid over a longer period.

11. Allocation of support costs

Governance costs are those support costs which relate to the strategic and day to day management of a charity.

Support and overhead costs are allocated between fundraising activities and charitable activities based on the proportion of expenditure incurred against them both during the year. These support and overhead costs are then further apportioned to unrestricted and restricted funds based on the average balance held in these funds during the year.

The charity does not directly employ any staff and therefore there are no employees who received emoluments of more than £60,000.

	Raising funds £000	Charitable activities £000	Total 2023-24 £000	Total 2022-23 £000
Governance				
External audit	5	21	26	24
Finance and administration	8	36	44	44
Total governance	13	57	70	68
Finance and administration	9	42	51	51
Other costs	2	8	10	10
	24	107	131	129

	Unrestricted funds £000	Restricted Income funds £000	Total Funds 2023-24 £000	Total Funds 2022-23 £000
Raising funds	12	12	24	21
Charitable activities	54	53	107	108
	66	65	131	129

12. Trustees' remuneration, benefits and expenses

The Charity does not make any payments for remuneration nor to reimburse expenses to the Charity Trustees for their work undertaken as Trustees.

13. Auditors remuneration

The auditors remuneration of £25,722 (2022-23: £24,174) related solely to the audit of the statutory annual report and accounts.

14. Tangible fixed assets

	Freehold land 2023-24 £000	Freehold land 2022-23 £000
Cost and valuation		
Balance brought forward	150	150
Additions	0	0
Revaluations	0	0
Disposals	0	0
Balance at 31 March	150	150
Depreciation and impairments		
Balance brought forward	0	0
Disposals	0	0
Impairment	0	0
Balance at 31 March	0	0
Net book value at 1 April	150	150
Net book value at 31 March	150	150

During 2017-18, a piece of land located in Porthmadog was donated to the charity for the benefit of the Madog Community & Hospital fund. The land was independently and professionally valued at open market value by the District Valuer in March 2021. There has been no impairment to the land in 2023-24. The charity continues to review options on the use of the land and its future sale or use.

15. Fixed asset investments

	Total 2023-24 £000	Total 2022-23 £000
Market value brought forward	9,827	10,387
Add: additions to investments at cost	2,834	1,805
Less disposals at carrying value	(2,461)	(1,541)
Decrease in cash awaiting investment	(216)	(122)
Add net gain / (loss) on revaluation	1,048	(702)
Market value as at 31 March	11,032	9,827

All investments are carried at their fair value.

All of the Charity's investments are held within a portfolio which is managed by Brewin Dolphin Limited. The key objective of the portfolio is to preserve and grow the investments' value in real terms, in order to continue to support charitable distributions over the long term. In order to meet this objective, the Trustees have agreed on a 'balanced' approach for the investment strategy. A 'balanced' portfolio is intended to achieve steady growth over the long term through a diversified approach to investment. Attention is paid to avoiding the worst of the downside and capturing some, but not all, of the upside of financial market returns. Capital preservation in real terms over a long time horizon is the primary objective, and some volatility is acceptable in order to achieve this.

In managing our portfolio, Brewin Dolphin Limited assess the risks and the potential impact they will have on the portfolio on an on-going basis. They also adjust investments to make the most of opportunities and to protect against risks as they see them. Risks promote uncertainty and make markets unpredictable over short periods. A solid allocation to diversifying assets and portfolio protection has therefore been maintained, resulting in risk within the portfolio being considerably lower than the broader equity markets.

16. Analysis of current debtors

Debtors under 1 year

	Total 31 March 2024 £000	Total 31 March 2023 £000
Accrued income	1,978	1,646
Prepayments	0	0
Other debtors	21	38
	<u>1,999</u>	<u>1,684</u>

17. Analysis of cash and cash equivalents

	Total 31 March 2024 £000	Total 31 March 2023 £000
Cash in hand	1,245	1,484
	<u>1,245</u>	<u>1,484</u>

No cash or cash equivalents or current asset investments were held in non-cash investments or outside of the UK.

18. Analysis of liabilities

	Total 31 March 2024 £000	Total 31 March 2023 £000
Creditors under 1 year		
Trade creditors	105	47
Creditors owed to Betsi Cadwaladr University Health Board	164	257
Accruals for grants owed to NHS bodies	532	596
Other accruals	2	0
Deferred Income	0	0
	803	900
Creditors over 1 year		
Accruals for grants owed to NHS bodies	81	444
	81	444
Total creditors	884	1,344

19. Reconciliation of net income / expenditure to net cash flow from operating activities

	Total 2023-24 £000	Total 2022-23 £000
Net income / (expenditure) (per Statement of Financial Activities)	1,741	(526)
Adjustment for:		
(Gains) / losses on investments	(1,048)	702
Dividends, interest and rents from investments	(224)	(194)
Donated fixed assets	0	0
(Increase) / decrease in debtors	(315)	149
(Decrease) / increase in creditors	(460)	182
Net cash (used in) / provided by operating activities	(306)	313

20. Transfer between funds

During 2022/23 there was £458k transferred between designated funds to reimburse restricted funds for any charge relating to net overall charity costs, less income from interest and investment gains / losses. This was a transfer between the unrestricted General Fund and various restricted funds. Following a change on 1 April 2023 to how charity costs are treated and allocated to restricted funds, there was no transfer between the unrestricted and restricted funds relating to net charity costs during 2023/24.

21. Analysis of funds

a) Analysis of restricted fund movement

	Balance 1 April 2023 (Restated) £000	Income £000	Expenditure £000	Transfers £000	Gains and (losses) £000	Balance 31 March 2024 £000
Leukaemia/Allied Blood Disease - YMW	196	4	(6)	0	0	194
Cardiology Fund - East	141	3	(63)	0	0	81
Wrexham Maelor General Fund	254	4	(8)	0	0	250
Wrexham Medical Institute	325	6	(11)	0	0	320
Ty Croeso - Dawn Elizabeth House Fund	138 *	14	(4)	0	0	148
Pathology Leukaemia/Haematology - Glan	125	2	(6)	0	0	121
Cancer Charitable Fund - Glan Clwyd	859	43	(183)	0	0	719
General Fund - Glan Clwyd	480	90	(17)	0	0	553
North Wales Cancer Centre Appeal	667	95	(29)	0	0	733
BCU Legacies Holding Fund	1,551	(262) **	0	0	0	1,289
NHS Charities Together Grants	100 *	114	(41)	0	0	173
Ysbyty Gwynedd General Purposes	684	88	(22)	0	0	750
Llandudno General Purposes	328	11	(10)	0	0	329
Ruthin Community Hospital General Purp	159	3	(7)	0	0	155
Ophthalmic Unit - H M Stanley	128	6	(8)	0	0	126
Vascular (West) General Purpose Fund	0	442	(4)	0	0	438
Unrealised Gain/Loss on Investments	0	0	0	0	543	543
Learning Disability Inpatients - BYN	126	2	(7)	0	0	121
Other Funds	1,091	514	(392)	0	0	1,213
	7,352 *	1,179	(818)	0	543	8,256

*The balances brought forward at 1 April 2023 have been restated to correct the classification of restricted funds which were included within unrestricted funds at 31 March 2023 (Note 21b).

The Trustees have set an opening or closing balance of £100k or above as the threshold for the separate reporting of material funds. In the interests of accountability and transparency a complete breakdown of all such funds is available upon written request.

The objects of each of the restricted funds are to benefit the patients of the area, department or service stated in the funds' name, in accordance with the Charity's overall objectives. There is one fund listed above that is not aligned to a specific area:

- The BCU Legacies Holding Fund relates to the debtor for legacies where receipt is probable and the amount can be reliably estimated but we have not yet received the cash. This fund is used to protect the designated funds from fluctuations in the final amount of legacy received. When the legacy is received it will be credited to the designated fund specified in the Will and the debtor is reversed out from the BCU Legacies Holding fund.
- **The negative £262k income reported against the BCU Legacies Holding Fund is the net movement of entries on that fund during the year. New legacy income of £59k has been included in the fund in 2023-24 but this is offset by a reversal of previous years' legacy debtors of £288k following receipt of funds during the year, and a £33k reduction in debtor values due to changes in estimates from the previous year.
- During 2023-24, legacies cash of £288k was received relating to amounts outstanding at 31 March 2023 and the debtors relating to these legacies were reversed within the BCU Legacies Holding fund. Income was allocated to the appropriate restricted and unrestricted funds in the year as per the table below:

Fund	Allocation of 2023-24 legacy income received £'000
Audiology CPG Fund	3
Cancer Charitable Fund - Glan Clwyd	9
Cardiology Department Central - Patients	87
Friends of Colwyn Bay Hospital	10
General Fund - Glan Clwyd	78
Llanrwst District Nurses Fund	1
Ophthalmic Unit - H M Stanley	3
Urology Department, Glan Clwyd	87
Other Funds	10
Total	288

b) Analysis of unrestricted and material designated fund movements

	Balance 1 April 2023 (Restated) £000	Income £000	Expenditure £000	Transfers £000	Gains and (losses) £000	Balance 31 March 2024 £000
Cancer Support Group - YMW	270	54	(151)	0	0	173
North Wales Psychiatric Fund	0	123	(1)	0	0	122
Cancer Charitable Fund - Glan Clwyd	849	47	(32)	0	0	864
Madog Community & Hospital Fund - Land	135	0	0	0	0	135
Alaw Ward - YG	948	196	(160)	0	0	984
General Funds - West	132	3	(4)	0	0	131
General Funds - Llandudno	131	2	(4)	0	0	129
General Funds - Investment Gains / Losses	1,289	0	0	(6)	505	1,788
Other Funds	680 *	712	(453)	6	0	945
	4,434 *	1,137	(805)	0	505	5,271

*The balances brought forward at 1 April 2023 have been restated to correct the classification of restricted funds (see Note 21a) which were included within unrestricted funds at 31 March 2023.

The objects of each of the unrestricted funds are to benefit the patients of the area, department or service stated in the funds' name, in accordance with the Charity's overall objectives. There is one fund listed above that is not aligned to a specific area:

- The General Funds – Investment Gains / Losses fund holds the unallocated unrealised gains and losses on the investment portfolio. This fund is used to protect the other designated funds from fluctuations in the investment values.

The 'General Funds' include all donations for which a donor has not expressed any preference as to how the funds shall be spent. These funds are applied for any charitable purpose to the benefit of the patients of the Health Board, at the discretion of the Trustees.

The Trustees have set an opening or closing balance of £100k or above as the threshold for the separate reporting of material designated funds. In the interests of accountability and transparency a complete breakdown of all such funds is available upon written request.

22. Post balance sheet events

The accounting statements are required to reflect conditions applying at the end of the financial year. No adjustments have therefore been made in respect of changes to the market value of investments following the end of the accounting period.

The Charity receives a quarterly portfolio report from its investment managers and the market value of investments held by the Charity has increased by £811k to the end of November 2024, as detailed below:

	31 March 2024 £000	30 November 2024 £000	Movement £000	Movement %
Investments	11,032	11,843	811	7.35%

Statement of the Trustee's Finance Representative's Responsibilities

As the Trustee's Finance Representative for the Charity, I am responsible for:

- the maintenance of financial records appropriate to the activities of the funds,
- the establishment and monitoring of a system of internal control,
- the establishment of arrangements for the prevention of fraud and corruption,
- the preparation of annual financial statements which give a true and fair view of the Charity and the results of its operations.

In fulfilment of these responsibilities I confirm that the financial statements set out on pages 32 to 53 attached have been compiled from, and are in accordance with, the financial records maintained by the Trustee and with applicable accounting standards and policies for the NHS.

Russell Caldicott
Trustee's Finance Representative

Date of sign off: 30 January 2025

Statement of the Trustee's Responsibilities in Respect of the Accounts

The Trustee's Representatives are required under the Charities Act 2011 to prepare accounts for each financial year. The Welsh Government, with the approval of HM Treasury, directs that these accounts give a true and fair view of the financial position of the Charity. In preparing these accounts, the Trustee's Representatives are required to:

- apply on a consistent basis accounting policies laid down by the First Minister for Wales with the approval of HM Treasury,
- make judgements and estimates which are reasonable and prudent,
- state whether applicable accounting standards have been followed, subject to any material departures disclosed and explained in the accounts.

The Trustee's Representatives confirm that they have complied with the above requirements in preparing the accounts.

The Trustee's Representatives are responsible for keeping proper accounting records which disclose with reasonable accuracy at any time the financial position of the Charity and to enable them to ensure that the accounts comply with requirements outlined in the above mentioned direction by the Welsh Government. They are also responsible for safeguarding the assets of the Charity and hence for taking reasonable steps for the prevention and detection of fraud and other irregularities.

By order of the Trustees

Dyfed Jones
Trustee's Representative
Date: 30 January 2025

Russell Caldicott
Trustee's Finance Representative
Date: 30 January 2025

Audit Report

The independent auditor's report of the Auditor General for Wales to the trustees of the Betsi Cadwaladr University Health Board Charity

Opinion on financial statements

I have audited the financial statements of the Betsi Cadwaladr University Health Board Charity for the year ended 31 March 2024 under the Charities Act 2011.

The financial statements comprise the Statement of Financial Activities, the Balance Sheet, the Statement of Cash Flows and related notes, including the material accounting policies.

The financial reporting framework that has been applied in their preparation is applicable law and United Kingdom Accounting Standards, including Financial Reporting Standard 102 The Financial Reporting Standard applicable in the UK and Republic of Ireland (United Kingdom Generally Accepted Accounting Practice).

In my opinion the financial statements:

- give a true and fair view of the state of affairs of the charity as at 31 March 2024 and of its incoming resources and application of resources for the year then ended;
- have been properly prepared in accordance with United Kingdom Generally Accepted Accounting Practice; and
- have been prepared in accordance with the Charities Act 2011.

Basis for opinion

I conducted my audit in accordance with applicable law and International Standards on Auditing in the UK (ISAs (UK)) and Practice Note 10 'Audit of Financial Statements of Public Sector Entities in the United Kingdom'. My responsibilities under those standards are further described in the auditor's responsibilities for the audit of the financial statements section of my report.

My staff and I are independent of the charity in accordance with the ethical requirements that are relevant to my audit of the financial statements in the UK including the Financial Reporting Council's Ethical Standard, and I have fulfilled my other ethical responsibilities in accordance with these requirements. I believe that the audit evidence I have obtained is sufficient and appropriate to provide a basis for my opinion.

Conclusions relating to going concern

In auditing the financial statements, I have concluded that the use of the going concern basis of accounting in the preparation of the financial statements is appropriate.

Based on the work I have performed, I have not identified any material uncertainties relating to events or conditions that, individually or collectively, may cast significant doubt

on the body's ability to continue to adopt the going concern basis of accounting for a period of at least twelve months from when the financial statements are authorised for issue.

My responsibilities and the responsibilities of the trustees with respect to going concern are described in the relevant sections of this report.

Other Information

The other information comprises the information included in the annual report other than the financial statements and my auditor's report thereon. The trustees are responsible for the other information contained within the annual report. My opinion on the financial statements does not cover the other information and, except to the extent otherwise explicitly stated in my report, I do not express any form of assurance conclusion thereon. My responsibility is to read the other information and, in doing so, consider whether the other information is materially inconsistent with the financial statements or knowledge obtained in the course of the audit, or otherwise appears to be materially misstated. If I identify such material inconsistencies or apparent material misstatements, I am required to determine whether this gives rise to a material misstatement in the financial statements themselves. If, based on the work I have performed, I conclude that there is a material misstatement of this other information, I am required to report that fact.

I have nothing to report in this regard.

Matters on which I report by exception

I have nothing to report in respect of the following matters in relation to which the Charities (Accounts and Reports) Regulations 2008 require me to report to you if, in my opinion:

- I have not received all of the information and explanations I require for my audit;
- sufficient accounting records have not been kept, or returns adequate for my audit have not been received from branches not visited by my team;
- the financial statements are not in agreement with the accounting records and returns; or
- the information given in the financial statements is inconsistent in any material respect with the trustees' report.

Responsibilities of the trustees for the financial statements

As explained more fully in the statement of trustee's responsibilities the trustees are responsible for:

- maintaining sufficient accounting records;
- the preparation of the financial statements in accordance with the applicable financial reporting framework and for being satisfied that they give a true and fair view;
- internal controls as the trustees determine is necessary to enable the preparation of financial statements to be free from material misstatement, whether due to fraud or error; and

- assessing the charity's ability to continue as a going concern, disclosing, as applicable, matters related to going concern and using the going concern basis of accounting unless the trustees anticipate that the services provided by the charity will not continue to be provided in the future.

Auditor's responsibilities for the audit of the financial statements

I have been appointed as auditor under section 150 of the Charities Act 2011 and report in accordance with regulations made under section 154 of that Act.

My objectives are to obtain reasonable assurance about whether the financial statements as a whole are free from material misstatement, whether due to fraud or error, and to issue an auditor's report that includes my opinion. Reasonable assurance is a high level of assurance but is not a guarantee that an audit conducted in accordance with ISAs (UK) will always detect a material misstatement when it exists. Misstatements can arise from fraud or error and are considered material if, individually or in the aggregate, they could reasonably be expected to influence the economic decisions of users taken on the basis of these financial statements.

Irregularities, including fraud, are instances of non-compliance with laws and regulations. I design procedures in line with my responsibilities, outlined above, to detect material misstatements in respect of irregularities, including fraud.

My procedures included the following:

- Enquiring of management, the Charity's Head of Internal audit and those charged with governance, including obtaining and reviewing supporting documentation relating to Betsi Cadwaladr University Health Board Charity's policies and procedures concerned with:
 - identifying, evaluating and complying with laws and regulations and whether they were aware of any instances of non-compliance;
 - detecting and responding to the risks of fraud and whether they have knowledge of any actual, suspected or alleged fraud; and
 - the internal controls established to mitigate risks related to fraud or noncompliance with laws and regulations.
- Considering as an audit team how and where fraud might occur in the financial statements and any potential indicators of fraud. As part of this discussion, I identified potential for fraud in the following areas: expenditure recognition, posting of unusual journals and management override;
- Obtaining an understanding of Betsi Cadwaladr University Health Board Charity's framework of authority as well as other legal and regulatory frameworks that the Betsi Cadwaladr University Health Board Charity operates in, focusing on those laws and regulations that had a direct effect on the financial statements or that had a fundamental effect on the operations of the Betsi Cadwaladr University Health Board Charity;
- Obtaining an understanding of related party relationships.

In addition to the above, my procedures to respond to identified risks included the following:

- Reviewing the financial statement disclosures and testing to supporting documentation to assess compliance with relevant laws and regulations discussed above.
- Enquiring of management, the Charitable Fund Committee and legal advisors about actual and potential litigation and claims.
- Reading minutes of meetings of those charged with governance and the Charitable Fund Committee.
- In addressing the risk of fraud through management override of controls, testing the appropriateness of journal entries and other adjustments; assessing whether the judgements made in making accounting estimates are indicative of a potential bias; and evaluating the business rationale of any significant transactions that are unusual or outside the normal course of business.

I also communicated relevant identified laws and regulations and potential fraud risks to all audit team members and remained alert to any indications of fraud or non-compliance with laws and regulations throughout the audit.

The extent to which my procedures are capable of detecting irregularities, including fraud, is affected by the inherent difficulty in detecting irregularities, the effectiveness of the Betsi Cadwaladr University Health Board Charity's controls, and the nature, timing and extent of the audit procedures performed.

A further description of the auditor's responsibilities for the audit of the financial statements is located on the Financial Reporting Council's website www.frc.org.uk/auditorsresponsibilities. This description forms part of my auditor's report.

Other auditor's responsibilities

I communicate with those charged with governance regarding, among other matters, the planned scope and timing of the audit and significant audit findings, including any significant deficiencies in internal control that I identify during my audit.

Adrian Crompton
Auditor General for Wales
Date: 31 January 2025

1 Capital Quarter
Tyndall Street
Cardiff
CF10 4BZ

Appendix 1: Board and Committee Membership 2023/24

Health Board Members:

Name	Position	Board Committee membership
Dyfed Edwards	Chair	<ul style="list-style-type: none"> Board Chair (interim to 29.02.24, substantive from 01.03.24) Chair Remuneration Committee Member Performance, Finance & Information Governance Committee
Carol Shillabeer	Chief Executive	<ul style="list-style-type: none"> Board Member (interim Chief Executive from 03.05.23 to 31.01.24, substantive Chief Executive from 01.02.24) In attendance Remuneration Committee (from 03.05.23) Member Local Partnership Forum Lead Director People and Culture Committee
Karen Balmer	Independent Member	<ul style="list-style-type: none"> Board Member (interim from 02.05.23 to 29.02.24, substantive from 01.03.24) Chair Audit Committee Member Remuneration Committee Member Charitable Funds Committee Member People & Culture Committee (from 01.01.24)
Clare Budden	Independent Member	<ul style="list-style-type: none"> Board Member (interim to 29.02.24, substantive from 01.03.24) Associate Board Member (to 01.05.23) Chair Stakeholder Reference Group (to 01.05.23) Chair Planning, Population Health & Partnership Committee (from 01.01.24) Member Remuneration Committee Member People & Culture Committee Member Performance, Finance & Information Governance
Russell Calidcott	Fixed Term Executive Director of Finance	<ul style="list-style-type: none"> Board Member (from 03.07.23) In attendance Audit Committee Lead Director Charitable Funds Committee (from 03.07.23) Lead Director Performance, Finance and Information Governance Committee (from 03.07.23) Member Local Partnership Forum

Name	Position	Board Committee membership
Gareth Evans	Acting Executive Director Therapies & Health Sciences	<ul style="list-style-type: none"> • Board Member • Lead Director Healthcare Professionals Forum • In attendance Quality, Safety and Experience Committee
Urtha Felda	Independent Member	<ul style="list-style-type: none"> • Board Member (from 03.11.23) • Member Remuneration Committee • Member Audit Committee (from 15.03.24)
Christopher Field	Independent Member	<ul style="list-style-type: none"> • Board Member (from 01.03.24) • Member Remuneration Committee • Member Performance, Finance and Information Governance Committee • Member Quality, Safety and Experience Committee • Member of Charitable Funds Committee
Adele Gittoes	Executive Director of Operations	<ul style="list-style-type: none"> • Board Member (from 01.08.23 to 21.03.24) • In attendance People and Culture Committee • In attendance Performance, Finance and Information Governance Committee
Sue Green	Executive Director of Workforce & Organisational Development	<ul style="list-style-type: none"> • Board Member (to 30.04.23) • Lead Director Remuneration and Terms of Service Committee • In attendance Performance, Finance and Information Governance Committee • In attendance Partnerships, People and Population Health Committee • Lead Director / Member, Local Partnership Forum • In attendance, Quality, Safety and Experience Committee
Gill Harris	Executive Director Integrated Clinical Delivery	<ul style="list-style-type: none"> • Board Member (acting Chief Executive from 16.11.22 to 27.03.23) • Member Local Partnership Forum • In attendance Performance, Finance and Information Governance Committee • In attendance Partnerships, People and Population Health Committee • In attendance Audit Committee
Sue Hill	Executive Director of Finance	<ul style="list-style-type: none"> • Board Member • In attendance Audit Committee • Member Local Partnership Forum

Name	Position	Board Committee membership
Cllr Dyfed Jones LA	Independent Member	<ul style="list-style-type: none"> • Board Member (from 22.05.23) • Chair People & Culture Committee • Member Remuneration Committee • Member Audit Committee
Professor Mike Larvin	Independent Member	<ul style="list-style-type: none"> • Board Member (from 10.04.23) • Member QSE (from 19.05.23) • Member Remuneration Committee
Dr Nick Lyons	Executive Medical Director / Deputy Chief Executive Officer	<ul style="list-style-type: none"> • Board Member (acting Chief Executive to 02.05.23) • In attendance Quality, Safety and Experience Committee • Member Charitable Funds Committee • In attendance Remuneration & Terms of Service Committee • In attendance Strategy, Partnerships and Population Health Committee
Molly Marcu	Fixed Term Board Secretary	<ul style="list-style-type: none"> • Interim Board Secretary (to 27.04.23) • In attendance Audit Committee • In attendance Remuneration and Terms of Service Committee
Phil Meakin	Acting Board Secretary	<ul style="list-style-type: none"> • Acting Board Secretary (from 18.04.23) • In attendance Audit Committee • In attendance Remuneration and Terms of Service Committee
Jane Moore	Acting Executive Director of Public Health	<ul style="list-style-type: none"> • Board Member (from 19.01.24) • In attendance Quality, Safety and Experience Committee • In attendance Partnerships, People and Population Health Committee
William Nichols	Independent Member	<ul style="list-style-type: none"> • Board Member (from 01.03.24) • Member Remuneration Committee • Member Local Partnership Forum • Member People & Culture Committee • Member Planning, Population Health & Partnerships Committee

Name	Position	Board Committee membership
Teresa Owen	Executive Director of Public Health	<ul style="list-style-type: none"> • Board Member (to 18.01.24) • Lead Director Mental Health and Capacity Compliance Committee • In attendance Quality, Safety and Experience Committee • In attendance Partnerships, People and Population Health Committee
Mike Parry	Associate Member	<ul style="list-style-type: none"> • Associate Board Member (from 24.10.23) • Chair of Stakeholder Reference Group
Fôn Roberts	Associate Member	<ul style="list-style-type: none"> • Associate Board Member (from 29.07.22)
Lesley Singleton	Interim Independent Member	<ul style="list-style-type: none"> • Board Member (from 05.02.23 to 30.05.23) • Member Remuneration Committee
Dr Chris Stockport	Executive Director of Transformation and Planning	<ul style="list-style-type: none"> • Board Member • In attendance, Quality, Safety and Experience Committee • Lead Director Partnerships, People and Population Health Committee • In attendance Performance, Finance and Information Governance Committee
Dr Caroline Turner	Independent Member	<ul style="list-style-type: none"> • Board Member (from 03.11.23) • Member Remuneration Committee • Member Planning, Population Health & Partnership Committee (from 01.01.24)
Rhian Watcyn Jones	Independent Member	<ul style="list-style-type: none"> • Board Member (interim to 29.02.24, substantive from 01.03.24) • Chair Quality, Safety and Experience Committee • Member Remuneration Committee • Member Performance, Finance and Information Governance Committee (from 21.03.24)
Steve Webster	Fixed Term Executive Director of Finance	<ul style="list-style-type: none"> • Board Member (to 22.06.23) • In attendance Audit Committee • Lead Director Charitable Funds Committee (to 22.06.23) • Lead Director Performance, Finance and Information Governance Committee (to 22.06.23) • Member Local Partnership Forum

Name	Position	Board Committee membership
Gareth Williams	Vice Chair	<ul style="list-style-type: none"> • Board Member (interim Independent Member to 02.11.23, substantive from 03.11.23) • Vice Chair (from 03.11.23) • Chair Performance, Finance & Information Governance Committee (from 12.05.23) • Member Remuneration Committee • Member Audit Committee (from 15.05.23) • Member Planning, Population Health & Partnership Committee (from 01.01.24)
Jane Wild	Associate Member	<ul style="list-style-type: none"> • Associate Board Member • In attendance Quality, Safety & Experience Committee
Angela Wood	Executive Director of Nursing and Midwifery	<ul style="list-style-type: none"> • Board Member • Lead Director Quality, Safety and Experience Committee • Member Local Partnership Forum • In attendance Performance, Finance and Information Governance Committee • In attendance Partnerships, People and Population Health Committee



Visit [Home – Betsi Cadwaladr University Health Board](#) to find out more about the impact the charity has, and the difference that your support makes for patients and healthcare service users across North Wales.

**The address of the charity and
the Corporate Trustee's principal office is:**

Awyr Las
Ysbyty Gwynedd
Penrhosgarnedd
Bangor
Gwynedd
LL57 2PW

**Betsi Cadwaladr University Health Board Charity and Other Related Charities (Awyr Las
Gogledd Cymru / Blue Sky North Wales). The North Wales NHS Charity.**

Registered Charity Number 1138976

www.awyrlas.org.uk / [Charitable Funds Committee](#)



This document is available online. The maintenance and integrity of the BETSI CADWALADR UNIVERSITY HEALTH BOARD CHARITY's website is the responsibility of the Accounting Officer; the work carried out by auditors does not involve consideration of these matters and accordingly auditors accept no responsibility for any changes that may have occurred to the financial statements since they were initially presented on the website.

The photos and quotes in this document are used with the permission of those who appear within them.