

CIRCLES SOUTH WEST
(A company limited by guarantee)



Trustees' Report & Financial Statements

Year Ended 31 March 2022

Company number 07369778

Registered Charity number 1138726

| Page | Contents |
|------|----------|
|------|----------|

| | |
|----|-----------------------------------|
| 1 | Administrative Information |
| 2 | Trustee Directors' Report |
| 29 | Independent Examiner's Report |
| 30 | Statement of Financial Activities |
| 31 | Balance Sheet |
| 32 | Cash Flow Statement |
| 33 | Notes to the Financial Statements |

FLETCHER & PARTNERS

CHARTERED ACCOUNTANTS

SALISBURY

CIRCLES SOUTH WEST TRUSTEES' REPORT FOR THE YEAR ENDED 31 MARCH 2022

The Trustees, who are also Directors of the Charity for the purposes of the Companies Act, submit their annual report and the financial statements of Circles South West (CSW) (the company) for the year ended 31 March 2022. The Trustees confirm that the annual report and financial statements of the Charity comply with current statutory requirements¹, the requirements of the Charity's governing document, and the Accounting and Reporting by Charities: Statement of Recommended Practice applicable to charities preparing their accounts in accordance with the Financial Reporting Standard applicable in the UK and Republic of Ireland (FRS102) - Charities SORP (FRS 102).

| | |
|-------------------------------------|--------------------------------------|
| REGISTERED CHARITY NUMBER | 1138726 in England & Wales |
| REGISTERED COMPANY NUMBER | 07369778 |
| CHARITY ADDRESS / REGISTERED OFFICE | 7 Madeira Road, Bournemouth, BH1 1QL |

TRUSTEE DIRECTORS *(correct at the date of signing)*

| | <u>Appointed as Trustee</u> |
|-----------------------------------|--|
| Stephen Ashton | April 2012 |
| Tim Price (Chair) | March 2015 |
| Dr Kieran McCartan (Deputy Chair) | September 2016 |
| Chris Maynard (Treasurer) | July 2017 |
| Jane Barks | resigned November 2021 |
| Stephen Barry | November 2017 |
| Peter Estall | November 2017 |
| Diane Wills | November 2017 [re-appointed; formerly May 2014-January 2017] |
| Ian Keys | June 2021 |
| Leonie Cole (Secretary) | June 2021 |
| Sophie Rigali | November 2021 |
| Marcella Mathis | May 2022 |
| Robert Starling | Appointed June 2021. Resigned February 2022 |
| Paul Davies | Resigned November 2021 |

CHIEF EXECUTIVE OFFICER

| | |
|-----------|---------------------|
| Jo Burden | Appointed June 2013 |
|-----------|---------------------|

¹ Including the Charities Act 2011 (replaced most of Charities Act 2006 and Charities Act 1992); the Charities (Protection & Social Investment) Act 2016 which strengthens the powers of the Charities Commission; the Trustees Acts 1925 and 2000, the most recent Act concerning the powers of Trustees regarding investments and delegation; Charity Commission regulation

ADVISERS

Independent Examiner

James Fletcher FCA, Messrs Fletcher & Partners
Crown Chambers, Bridge Street, Salisbury, Wiltshire, SP1 2LZ

Bankers

Unity Trust Bank, PO Box 7193, Planetary Road, Willenhall WV1 9DG

Solicitors

Wilsons, Alexandra House, St Johns Street, Salisbury SP1 2SB

CHARITY CONTACT DETAILS

Correspondence address: PO Box 163, Launceston, Cornwall, PL15 0BA

General email enquiries: info@circlessw.org.uk

Website: www.circles-southwest.org.uk

Twitter: @CirclesSW

Facebook: Circles South West

STRUCTURE, GOVERNANCE AND MANAGEMENT

Governing Document and Constitution

CSW is a charitable company limited by guarantee. It was incorporated on 8 September 2010. The company is governed by its Memorandum and Articles of Association dated 31 August 2010 as amended by the AGM of 8 March 2012. The Directors of the company are also the Trustees.

Governance and Management

The company (hereinafter referred to as the Trust or Charity or CSW) is governed by its Trustees who meet periodically and who act as Directors for company law purposes. The day-to-day activities are managed by the Chief Executive Officer.

Recruitment and Appointment of Trustees

New Trustees are recruited from among people who have an interest in furthering the aims of the Charity with a view to ensuring that all the necessary competencies are represented within the Trustee body. CSW aims to have a Board of between 8 and 12 Trustees drawn from the local community with the broadest possible range of backgrounds. Expressions of interest in becoming a CSW Trustee are welcomed.

Objects of the Charity

The objects of the Charity are to relieve the needs and promote the rehabilitation, treatment, education and care of persons who have committed or are likely to commit offences, particularly sexual offences, against others and the families of such persons and others affected by such offences.

Public Benefit

The Trustees confirm that they have complied with the duty in Section 4 of the Charities Act 2011 to have due regard to the public benefit guidance published by the Charity Commission. Specifically, a reduction in sexual offending is of immeasurable benefit to those who might otherwise have become victims, to their families and communities, and to those who have been diverted from offending. As volunteers, members of the general community gain from the opportunity to play a part in preventing such offending.

SUMMARY OF MAIN ACTIVITIES OF THE CHARITY IN RELATION TO ITS OBJECTS

Our Mission:

- To prevent sexual abuse by enabling local communities to support the safe integration of people who have sexually harmed
- To promote greater public understanding of community approaches to prevention, risk management and public protection.

CSW is the award winning² regional Charity that uniquely provides Circles of Support and Accountability (CoSA/Circles) across South West England, an innovative community approach to reducing the risk of sexual reoffending. With a vision of 'No More Victims' of sexual abuse, our primary aim is to prevent further sexual harm by adults convicted of sexual offences and young people with harmful sexual behaviour, thereby preventing the profoundly damaging consequences for victims, their families and communities.



Each Circle provides a small group of professionally trained volunteers to work with an individual who has sexually offended. For adults this often follows a prison sentence. We also provide Circles for young people with harmful sexual behaviour. This individual becomes the 'core member' of a Circle that meets regularly to help the core member to integrate safely in the community and to lead a responsible and offence-free life.

The Circle holds the core member accountable for their continuing behaviour and is alert to any indications of risk that reoffending might occur. In this way, public safety is enhanced, the Circle acting as a safety mechanism for both the core member and the community. Circles work towards there being 'No More Victims' by:

- reducing social isolation and emotional loneliness as well as modelling appropriate adult relationships and demonstrating humanity and care;
- monitoring, to protect the public and increase the safety of communities;
- holding the core member accountable while developing a relationship of trust, honesty and openness.

² 2019 Robin Corbett Award for Prisoner Re-integration and 2020 Howard League Community Award Commendation (Children in Care and Care Leavers' category)

Complementing our core work and on a much smaller scale, we provide support services for the non-offending partners and family members impacted by an individual's sexual offending, enabling them to become 'protectors'. This includes 'Inform' (in partnership with the Lucy Faithfull Foundation) and 'Breaking the Cycle' (in partnership with Circles South East).

We also provide workforce development for professionals around working with people who have sexually harmed. This transfer of knowledge and expertise is developing our reputation as a trusted provider of training and consultancy in our specialist field, with a business model that will reinvest income generated into our core services.

Relationships with Other Bodies

CSW works within the structures of Multi-Agency Public Protection Arrangements (MAPPA) and closely with the 'responsible agencies' – police, probation and prison services. The Charity also works alongside other agencies who have a 'duty to cooperate', including health, youth offending services, social care and local education authorities working together to prevent further sexual harm.

CSW is an accredited member of Circles UK, the body responsible to the government (Ministry of Justice) for embedding national standards for the provision of CoSA, undertaking regular Provider 'Code of Practice Compliance Reviews' that assess compliance with national standards. Most recently in April 2021³, CSW achieved 97.7% compliance against national standards (i.e. the 'Code of Practice for Circles of Support & Accountability v4 July 2018' and the 'Code of Practice for Young People's Circles of Support & Accountability v1 2018').

³ Code of Practice Review Report, June 2021, Circles UK

ACHIEVEMENTS & PERFORMANCE

Small and local charities demonstrated “absorptive capacity” by ‘soaking-up’ the unprecedented impact of the crisis on their work, operations and the individuals and communities they support; and then showing tremendous “adaptive capacity” by responding rapidly and flexibly through adjustments and innovations ongoing

The Value of Small in a Big Crisis, Lloyds Bank Foundation, 2021



Surviving as a small-to-medium (SME) charity in the pandemic

The Covid-19 Pandemic has been the most extraordinary time. It has had an unprecedented impact on societies and communities across the world, significantly affecting the way we interact, work and live. Inevitably, its impact continued to permeate our work this year and as a result we continued to adapt our services to ensure Covid-secure provision. The Government’s ‘Living with Covid’ Plan was published in February 2022 when all legal restrictions ended. However, we are mindful that Covid has not gone away and we continue to navigate delivery with continued interruptions due to Covid-related absences for staff, volunteers, service-users, delivery partners and so on.

Nevertheless, we are pleased to present this report from a continued position of strength having demonstrated exceptional agility in our response to the pandemic. This year has been one of continued delivery adaptation (including blended⁴ Circles, small group volunteer training events), catching up and adjusting to the new normal, all the while with the shadow of another Covid wave a constant threat. Staff and volunteer resilience, innovation, flexibility and determination, combined with funder support, mean that we end the year having again delivered an impressive level of service provision and in good financial health.

We have foregrounded our achievements and performance with our response to the pandemic. Despite this, the last year has seen CSW continue to sustain its core work and develop complementary services for the benefit of the service users, local communities and partner agencies with whom we work to achieve our vision of ‘No More Victims’ of sexual abuse.

This year we have focused on:

- Continuing to effectively navigate the impact of the pandemic with an absolute priority on providing direct services, thereby remaining true to our mission
- Extending our impact by continuing to extend our services, develop new working alliances and access alternative income sources
- Delivering fee-earning workforce development for professionals, thereby generating unrestricted funds
- Developing complementary services to our core work

⁴ ‘blended’ circles were designed in response to pandemic restrictions meaning that a circle could meet with some members in the room (minimum of 2 volunteers at all times) plus some individuals joining the room via online video facility (i.e. Zoom). This meant that individuals who were covid vulnerable, shielding or isolating could still join their circle

- A renewed focus on Equity, Diversity and Inclusion (EDI), including developing a new EDI Strategy, with companion action plan for the next period
- Restructuring our staff team and enhancing staff well-being package to ensure the most agile and effective use of our staff resource
- Robustly monitoring our work to facilitate independent evaluation by Research in Practice

We are entirely invested in ensuring that we attract and retain the right staff, volunteers and trustees and that they have the necessary knowledge and skill to contribute effectively to CSW's development and provision. We continue to dedicate significant resources to volunteer recruitment and retention, a necessity as the general demand is high for willing, available, suitable volunteers.

We remain focused on delivering creative solutions and responding to changing needs in a challenging environment, at all times working towards our vision of 'No More Victims' of sexual abuse.

2021-22 Highlights

HMI Probation Evidenced Effectiveness of Circles

In October 2021 Her Majesty's Inspectorate of Probation (HMIP) updated its website around research on sexual offending. This included a welcome statement about the impact of Circles as a commissioned service used by the Probation Service. The findings focused on Circles provided by Circles South West, including our two minute summary 'explainer': 'How a Circle works' and the following statements showing strong endorsement for Circles:



Her Majesty's
Inspectorate of
Probation



'Circles of Support & Accountability have been found to reduce risk and increase compliance with registration requirements'.



'COSA has been found to reduce reoffending and increase compliance by high risk sexual offenders'.

Full report here: <https://www.justiceinspectorates.gov.uk/hmiprobation/research/the-evidence-base-probation/specific-sub-groups/sexual-offending/?s=09>

HMPPS Telephone Befriending Service

Between January-August 2021, and in partnership with the national charity Volunteering Matters we provided a Telephone Befriending Support Service to 23 People on Probation assessed by HMPPS as particularly vulnerable as a result of the pandemic. This involved 17 experienced volunteers, trained specifically for this role, who welcomed this additional opportunity, particularly those shielding (Covid).



VCS Emergencies
Partnership

In providing this well received service, CSW made 426 calls to People on Probation and is pleased to have made a small contribution to the Voluntary and Community Sector (VCS) Emergencies Partnership⁵.

Equity, Diversity and Inclusion

With the support of Lloyds Bank Foundation Enhance Programme we have focused on becoming a more equitable, diverse and inclusive organisation, including:

INCLUSION



of all voices and visions

DIVERSITY



of people and perspectives

EQUITY



in policy and practice

- With the expertise and guidance of Ngozi Lyn Cole, we have this year co-produced our Equity, Diversity and Inclusion Strategy and companion Action Plan. We have started rolling out facilitated learning events for all staff, trustees and volunteers
- With the support of Reach Volunteering we have reviewed our Trustee recruitment process and have appointed new Trustees, widening the diversity of the Board.

CoSA Code of Practice Compliance Review: *'Well done on an excellent achievement'*

In Spring 2021 we were the subject of the 'CoSA Code of Practice Compliance Review' undertaken by Circles UK on behalf of the Ministry of Justice. The process included submission of detailed documentation evidencing compliance with the 12 national standards and 43 requirements of the Code of Practice, and 3 x 1 day site visits in Bournemouth, Yeovil and Swindon. We were delighted to achieve 97.7% compliance.

"The review highlighted how much work was done and how sound the organisation's Circles practice is. The achievement is even more remarkable when viewed against the challenges of COVID-19... It is clear that Circles South West is a healthy, resilient and professional organisation. Well done on an excellent achievement"

Riana Taylor, CEO, Circles UK, June 2021

⁵ The Voluntary and Community Sector (VCS) Emergencies Partnership is made up of a range of organisations within the sector with the aim of improving coordination at national and local levels before, during and after emergencies. Bringing together local, national and global expertise from the sector, the Emergencies Partnership aims to help people prepare for, respond to and recover from emergencies, so that they can rebuild their lives.

OPERATIONS

Our core offer and main provision is Circles of Support and Accountability. In addition we provide complementary group-work (Inform Plus) for men convicted of offences involving indecent images of children (IIOC); individual and group-work support for non-offending partners, family and friends (Inform and Breaking the Cycle). We also provide training and consultancy for professionals. The first part of this section focuses on Circles, followed by short reports on other provision.

Context: service delivery in a second pandemic year

We started the year with most Circles meeting (Covid-secure) face-to-face, 'blended' as necessary. We continued to work within the parameters of Government and Public Health England guidelines and regulations ensuring voluntary informed consent for in-person meetings from all those involved. Young People's Circles were a particular challenge as they hinge on activity-based meetings. With many community activities remaining closed, our volunteers were creative, coming up with innovative and fun ways of engaging our younger core members, from playing Covid-secure board games to socially distanced cycle rides. Prison/Through-the-Gate Circles were similarly challenging for different reasons; with Prison visiting and Release on Temporary Licence (ROTL) suspended, these Circles had to be postponed; our HMP The Verne Project in Dorset was suspended until September 21 when access resumed. Nevertheless, we have achieved a remarkable level of service provision and this is entirely down to the creativity, willingness and flexibility of our volunteers and staff. We thank them all.

We continued to provide a comprehensive 3 module Volunteer core training package, the first two modules delivered online and the final module being delivered Covid-secure, face-to-face in small groups at local level. Since September 21 we have reverted to our usual volunteer core training and assessment weekend residential events, albeit keeping numbers smaller than pre-Covid times.

We continue to offer a monthly, online volunteers' event to enable everyone to keep in touch and to provide a forum for additional training, development, learning and discussion.

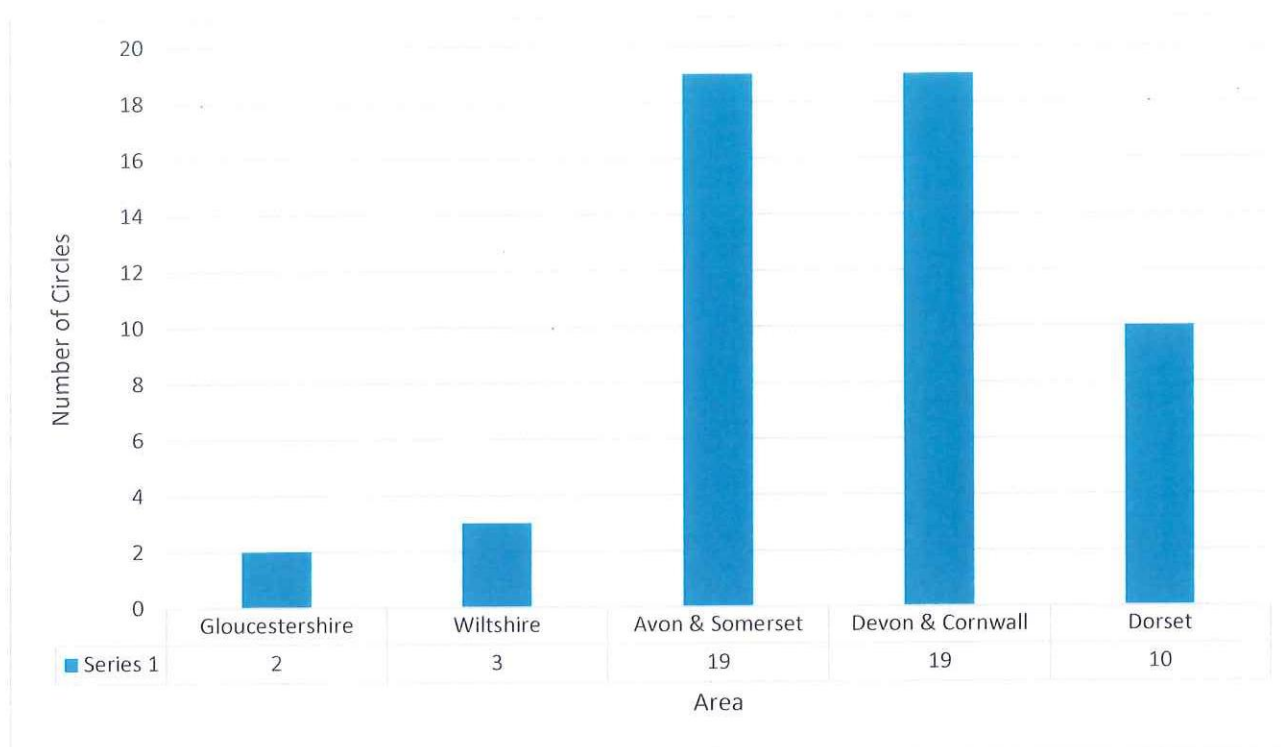
Circles of Support and Accountability

In 2021-22, we coordinated 53 active Circles (up by 18 on the previous year). 31 (58%) of those Circles were newly established in year (since April 2021) with the other 22 (42%) carried forward from the previous year.

We coordinated Circles in all five police areas in the South West region which comprised 'standard' community Circles for adults, prison/through the gate Circles, Circles for young people (10 years plus), Circles for adults with intellectual disabilities and a new variation, Reboot Circles*.

*Reboot Circles is a shorter Circle (3-6 months), specifically designed for adults (low to medium risk with high need) convicted of online offences involving indecent images of children. In this Year 1 of the current pilot led by Circles UK, CSW coordinated 6 Reboot Circles. The national evaluation will be published later in 2022 before Year 2 gets underway.

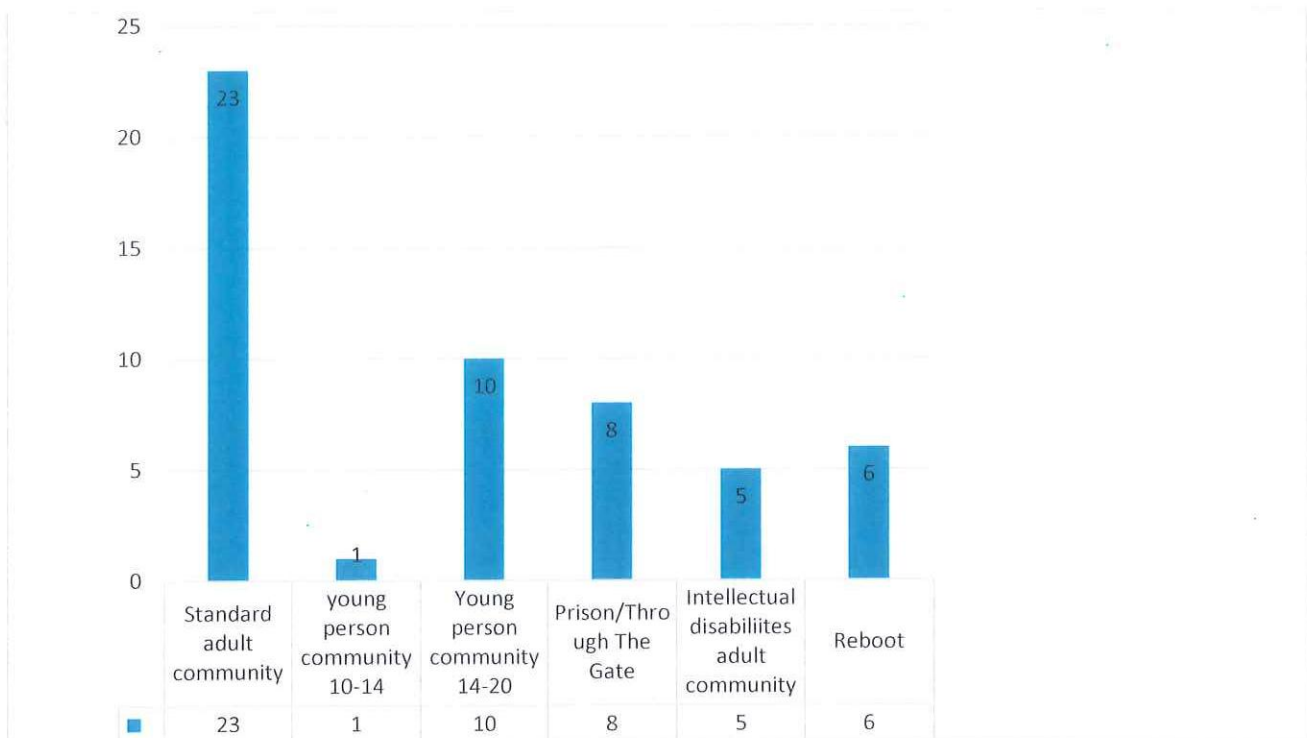
Number of Circles by area



A third of all Circles were located in Devon and Cornwall, well supported by the Office of the Police and Crime Commissioner. Another third were located in Avon and Somerset⁶, although none of these were 'standard' community Circles for adults; rather all 19 were specialist Circles, adapted specifically for young people, for adults with intellectual disabilities or were prison/through the gate Circles or Reboot Circles.

⁶ comprising the Unitary Authorities of Bristol, Bath & North East Somerset, South Gloucestershire and North Somerset, and the County of Somerset

Number of Circles by type



Just under half of the Circles were 'standard' community Circles for adults and around a fifth were Circles for young people. Due to Covid restrictions, significantly fewer Prison/Through The Gate Circles started this year.

Core Member Referrals

During the year 2021-22, there were 73 new core member referral enquiries of which 22 converted into formal referrals, all of which were allocated to a new Circle. The additional new Circles were from referrals carried forward from the preceding period. 83% of adult referrals were made by the Probation Service, despite no funding being forthcoming from Probation. Other referrers included prisons, police, Children's Social Care, Youth Offending Team, Glebe House Therapeutic Community.

Core Member Diversity

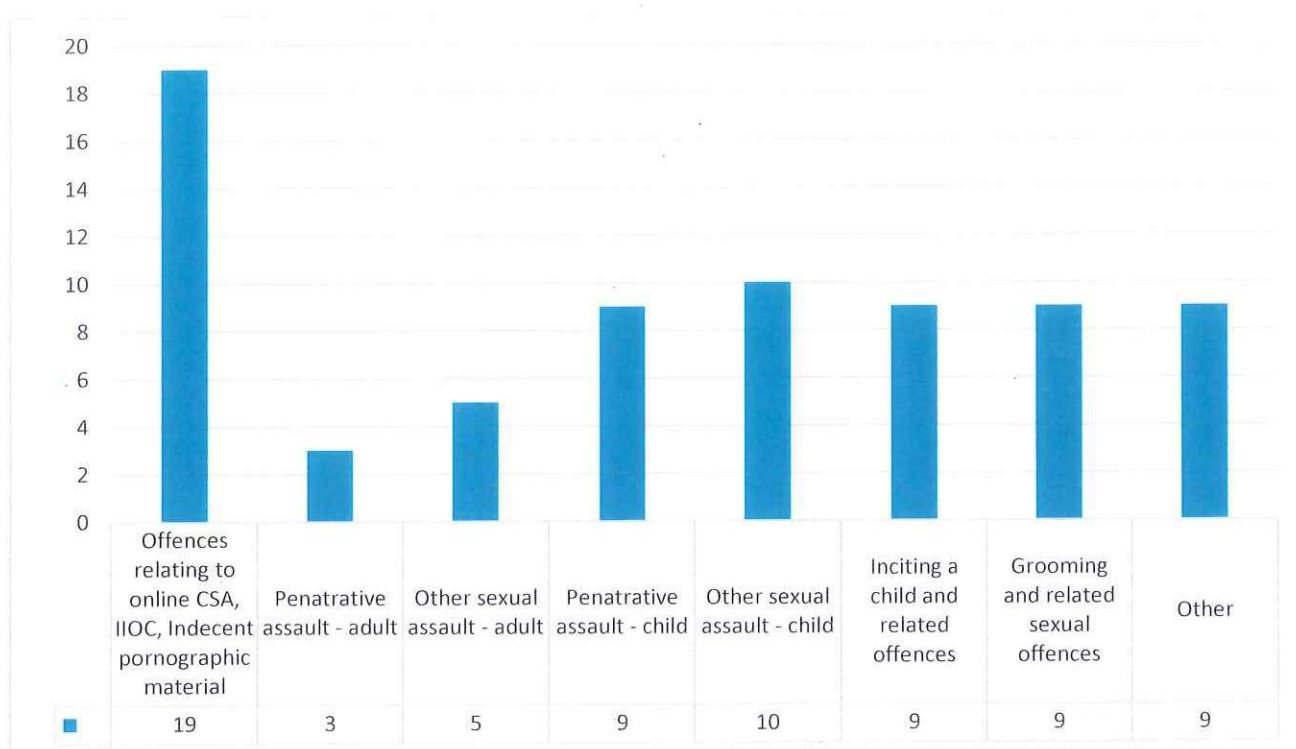
In 2021-22, we provided Circles for 2 female core members, both U18. 90% of core members self-defined as white British; 1 white Irish; 2 white other; 1 mixed and 1 other. 38% said they had a disability as defined by the Equality Act 2010. 75% self-defined as heterosexual, with 25% saying they were gay, lesbian or bisexual. At the point they were allocated to a Circle, core members were between 10 and 65 years old. This included 15% young people under 18 years old.

Index Offences, Prevention Orders

For the purposes of the summary presented below, the 'index offence' is defined as the last sexual offence for which the core member was convicted, in most cases the offence(s) for which the most recent

sentence was imposed. Some core members were convicted of more than 1 category. Most of our younger core members U18 were un-convicted, reaching eligibility threshold for our young people's service in terms of their harmful sexual behaviour. The majority of this cohort had been involved in intra-familial abuse, and specifically sibling sexual abuse.

Core Member Index Offence, by type



Key:

CSA = Child Sexual Abuse

IIOC = Indecent Images of Children

'Other' includes sexual murder and abduction of child as well as breaching Sex Offender Registration (SOR) and/or breach of Sexual Harm Prevention Order (SHPO)

Of those convicted, 42% of core members were on licence at the point of referral whilst 55% core members were subject to a Sexual Offences Prevention Order (SOPO) or Sexual Harm Prevention Order (SHPO).

Outcomes: Circles of Support & Accountability

"Overall we have shown a marked difference in a balanced measure of dynamic risk between the start and end of Circles. In other words, during the time that Circles have been active, perceived risk due to dynamic factors has reduced for core members. Further evidence from across the evaluations suggests that the Circle has had a large contributory effect in this reduction of risk" Research in Practice

29 Circles closed in 2021-22. Of these, 23 (79%) ran their natural course for an average active period of 11.7 months (the average period reduced slightly as Circles Reboot are 3-6 months duration). 4 (14%) core members were recalled due to risky behaviour⁷. The other 2 Circles that closed early were for young people and both collapsed without really starting largely due to Covid restrictions.

"I view Circles as a kind of 'bridge': not too sympathetic, as family can sometimes be. Not completely risk averse, as probation can sometimes appear to be. Simply a bunch of normal people who are genuinely supportive, providing me a safe place to seek advice & guidance, to give me a gentle nudge here and there.....It's really hard to express how valuable this has been for me. Without the support of my Circle, life would be a whole lot more difficult." Core Member

Independent Evaluation

research
in practice

"Circles of Support and Accountability are an important part of a community-led, strengths-based and restorative approach to reducing the risk of future sexual abuse." Research in Practice

Since 2017, Research in Practice <https://www.rip.org.uk/> has independently evaluated CoSA, with ethics approval from Her Majesty's Prison & Probation Service (HMPPS) National Research Committee (NRC). The research highlights the statistically significant impact of CoSA in reducing dynamic risk factors associated with sexual recidivism over the life of a CoSA, including sexual interests, offence related attitudes, relationships and self-management. Dynamic risk is impacted by protective factors such as employment and accommodation status, community connectivity and involvement in positive activities as well as risk factors such as social isolation and emotional loneliness, all of which are addressed by CoSA. Data for each Circle is collected at multiple time points, using multiple tools and from multiple stakeholders, providing a comprehensive data set.

Reporting in 2022 on a data-set of 124 CoSA, Research in Practice found the outcomes in the table below for core members between the start and end of their CoSA:-

⁷ No new offences but behaviour included inappropriate search terms on mobile phone, possession of cannabis, lack of disclosure within relationship

Table 1: Outcomes for 124 core members between the start and end of their Circle, 2017-2022

| %age core members (n=124) | category |
|---------------------------|---|
| 80% | had improved wellbeing |
| 78% | were making more careful decisions |
| 78% | were better managing their sexual thoughts & behaviour |
| 77% | were better integrated into their local community |
| 73% | were less isolated |
| 69% | had reduced their general risk |
| 68% | had increased involvement in hobbies/activities |
| 52% | were more engaged in education, training and volunteering |

"Circles provide a source of positive support, particularly when other support might have fallen away... due to core members' challenging behaviour, their past actions, or their own difficulties with self-esteem and well-being. Whatever the reasons for their isolation and seclusion, the circle presents a reliable and consistent structure in their lives that has shown to be supportive in establishing longer term and more permanent changes" Research in Practice

The majority of core members appear to have reduced dynamic risk of reoffending at the end of their Circles compared to the beginning... evidence from across the evaluations suggests that the Circle has had a large contributory effect in this reduction of risk" Research in Practice

"Partners in prison, probation and youth services have a positive view of this work, and CSW are complementing wider work in the criminal justice sector. CoSA are an important part of a community-led, strengths-based and restorative approach to reducing the risk of future sexual abuse" Research in Practice

CASE STUDY: TOM (name changed to protect anonymity)

'Tom' was a serving prisoner at an open prison when his offender supervisor spoke to him about CoSA having seen a presentation about our prison/through the gate Circles.

Tom (63 years) was sentenced to 8 years imprisonment for (historic) offences of indecent assault and gross indecency committed against his 7 year old daughter (she disclosed the offences in her 20's). Prior to these matters coming to light, he and his then wife had divorced and he had moved to a new area. He had remarried and had another child. Following his arrest and subsequent sentence, his second wife divorced him and stopped contact with his young daughter. He suffered with periods of depression and severe anxiety whilst in prison and attempted suicide on one occasion. He was to be released to an Approved Premises and, due to geographical exclusions, to an area unknown to him and he had no support at all from any friends or family. He was assessed as posing a high risk of serious harm to children and there were concerns he might attempt to contact his second wife and child. In view of this, he was to be managed at Level 2 MAPPA on release due to multi agency involvement.

Tom was formally referred to CSW for a Circle by his Probation Officer who identified areas of need as low self-esteem, lack of a pro social network, emotional loneliness and social isolation, factors which all contribute to increasing risk of further offending. His mental state was a concern, as was the fact that he had lost everything on conviction and now needed to rebuild his life from scratch, once released. He would be subject to Licence Conditions and Sexual Harm Prevention Order (SHPO) prohibitions, impacting on where he could live, where he could work, what hobbies he could pursue and requiring him to disclose to any potential partner his offending history. It was considered that a prison/through the gate Circle would both support him and hold him to account in the difficult transition from custody to the community and the challenges that lay ahead.

Tom was interviewed and assessed as suitable and seemed genuine in his motivation to lead an offence free life.

Tom met with his Circle volunteers in the prison and was clearly very keen to engage. However there were concerns that he did not really appreciate that life as a Registered Sex Offender was going to be much harder than he imagined - he had always been employed, had his own home, family, and friends about him. The prison Circle meetings focused on his hopes and expectations for the future and looking at how realistically this could be achieved, one step at a time. As a determinate prisoner, he was not eligible for release on temporary licence to the Approved Premises prior to his release, so would not have the opportunity to re-engage incrementally into the community. He subsequently would say how important it was to have met the volunteers prior to release so he would know someone outside the prison establishment who he could talk to and trust. He knew the volunteers were aware of the details of his offences so he had nothing to hide.

On release, the volunteers met with him weekly for several months before reducing to fortnightly for the remaining term. Tom found rebuilding his life much harder than anticipated and whilst trying to stay positive, at times presented in low mood, anxious, angry and frustrated. He was encouraged to talk about feelings, which he had not been able to do in the past and this had contributed to problems in relationships. As he began to do this, he would say how important being able to do so in a situation where he felt safe helped him to begin building relationships outside his Circle. He started to engage in appropriate hobbies and helped others living in the Approved Premises with literacy. Volunteers supported him in applying for work and dealing with the knock backs. His move from the Approved Premises to independent accommodation raised concerns again about isolation and his health and meetings focussed on how he was spending his time, how he was coping with living alone and managing feelings about not being allowed contact with his younger child and the lifetime damage he knew he had done to his older child. He clearly valued the 'friendship' and care he felt from the volunteers and described them as his 'parachute'. He went on to obtain work, a huge step forward providing a structure, contact with others, an income and rebuilding self-esteem.

Most of the 38 Circle meetings were formal meetings with occasional meetings in a café and shared meals. He particularly valued this, giving him the confidence to engage more in his own local community.

Tom's Circle ended after 18 months of contact during which the 4 volunteers gave 110 direct volunteering hours and 164 indirect volunteering hours. At the final review held with his Probation Officer, the regard he had for his volunteers and their freely given time to spend with him was very apparent. They had clearly contributed to supporting him in the identified area of need and he had complied fully with Licence and SHPO conditions and had stayed committed to maintaining an offence free life. He spoke highly of

the Circle, particularly in supporting him from prison, to supported accommodation, to independent living. His Probation Officer echoed his thoughts and believed that the time and support the Circle volunteers had been able to give made an immense difference in his successful transition through these key stages.

"I know the CM found it very beneficial for the Circle to start prior to his release and the Circle helped ease his transition back into the community. Excellent support offered, thank you!" Probation Officer

"I wasn't sure what I was expecting to start off with, but I was surprised about how passionate I felt about being part of a support network for our core member as he didn't have one. So rewarding to see his progress since his release" Volunteer

"It's good to be able to be open and talk about my feelings on a regular basis. It would be nice for it to carry on for a bit longer. The Circle has been really helpful, has given me a lot of good feedback, motivating me to carry on" Core Member

Complementary Services

Inform Plus

Licensed by the Lucy Faithfull Foundation, CSW is an Approved Provider of Inform Plus (in Devon, Cornwall, Dorset and Wiltshire), the 11 session (11 week) psycho-educational groupwork programme for men convicted of internet offences involving indecent images of children. Devon and Cornwall Office of the Police & Crime Commissioner (OPCC) has commissioned CSW to deliver 6 programmes for up to 60 men referred by the police. Independent evaluation is being undertaken by Research in Practice (funded by Nota).

Inform Plus 1. Camborne: complete. Group ran September-December 2020 with the 3-month review in May 2021 (Covid postponed). Five men started the programme (after receiving nine referrals) and five completed.

Inform Plus 2. Exeter: Group ran December 2020 to June 2021 (with 2 suspensions due to Covid Lockdowns). 3-month review Oct 2021. Seven men started the programme and four completed. During the programme one man left as he moved out of county and two left because of changes in their working shift patterns.

Inform Plus 3. Plymouth: Group ran July-Sept 2021 with seven men (nine referrals received) 3-month review Dec 2021.

Total Inform Plus referrals: 32. Total Inform Plus completions: 16

Inform

Licensed by the Lucy Faithfull Foundation, CSW is an Approved Provider of Inform (in Devon, Cornwall, Dorset and Wiltshire), the 5 session (5 week) educational-support course for partners, relatives and friends of men convicted of internet offences involving indecent images of children. Devon and Cornwall OPCC has commissioned CSW to deliver 6 programmes for up to 48 adult participants.

Inform 1. Camborne: Group ran June-Sept 2021.

Total Inform referrals: 5. Total Inform completions: 5

Breaking the Cycle

Licensed by Circles South East, CSW is the Approved Provider of this 10 session (10 week) programme for 'non-offending partners' in South West England, specifically for women with children whose current or ex-partner has sexually offended against children. Complementing the statutory child protection process, it is designed to enhance children's safety. As well as a groupwork programme it can also be delivered for individual women.

We have facilitated 1 Wiltshire group (March-May 2022), funded by Wiltshire & Swindon Police and Crime Commissioner. Wiltshire Social Care also commissioned the programme for an individual woman.

Training and Consultancy (workforce development)

For professionals we provide training and consultancy support around working with people who have sexually harmed including:

- 1 day open access courses
- Bespoke training designed to meet organisational need
- Professional group supervision
- Individual non-line management supervision.

This has included:

- Our Summer 2021 Training Programme comprising 5 open access 1 day events in Bournemouth, Bristol and Plymouth; 'working with people who have sexually harmed' (Level 1) and 'living and working in a pornified world'
- Plymouth Together for Childhood commissioned 5 multi-agency accessed 1 day events in Plymouth 'working with people who have sexually harmed' (Level 1)
- Catch22 contract via the Probation Service Dynamic Framework to provide workforce development programme for staff delivering on the Personal Wellbeing contract, including a series of training and workshops over the year. This is provided in partnership with Circles South East
- Avon and Somerset Police commissioned 2 x 1 day MOSOVO training events 'living and working in a pornified world'.

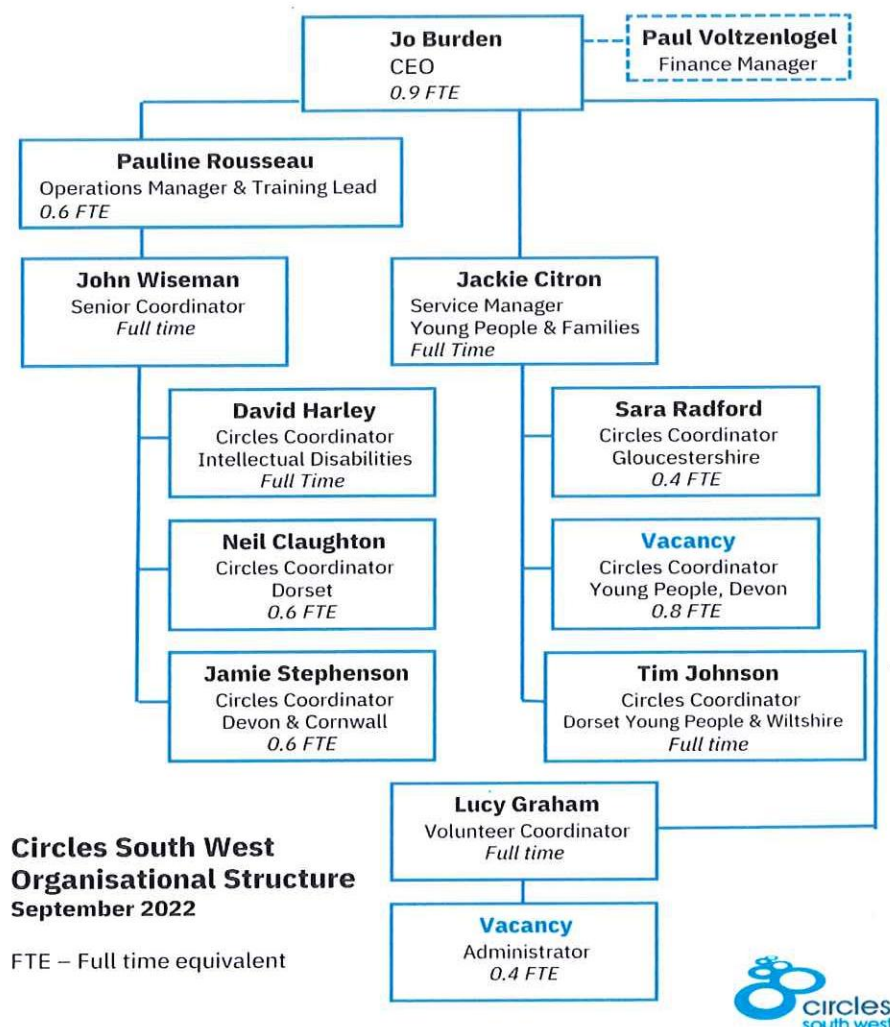
STAFF AND VOLUNTEERS

*"Keep up the fantastic work, our community needs you. We are grateful"*⁸

Alison Hernandez, Police & Crime Commissioner for Devon & Cornwall

Staff

Our exceptionally skilled and dedicated staff bring extensive combined experience of probation, MAPPA, social work, police, prisons, treatment programmes, harmful sexual behaviour, youth justice, learning disabilities, crime prevention and volunteering across the statutory and voluntary sectors. The trustees are grateful to the staff for their wholehearted commitment to the work, particularly over the last couple of years, when the usual job insecurity, home working isolation, limited resources and challenging nature of the work have been compounded by the complexities of living and working in a pandemic.



⁸ Via Twitter

Volunteers

Our volunteers are the life-blood of our Charity: they do not simply support Circles, they are Circles. Their ongoing dedication to protecting communities from sexual harm is exceptional. 166 volunteers were involved in the 53 Circles coordinated during the year, contributing between them almost 8,900 hours volunteering time⁹. A conservative estimate of the value in-kind that our volunteers have contributed this year is around £147,000¹⁰. At the end of 2021-22 we had 203 retained, trained volunteers across the region.

Since 2017, Research in Practice <https://www.rip.org.uk/> has independently evaluated CoSA. In 2021 they specifically evaluated on the volunteering aspect of Circles producing a separate 'Volunteering Experience' report, summarising the feedback of 154 Volunteers involved in 64 separate Circles. This evaluation also captured and reported on volunteering hours. The following provides a summary of their findings. The full evaluation reports can be found here on our website: [Making a difference - Circles South West \(circles-southwest.org.uk\)](https://circles-southwest.org.uk/making-a-difference-circles-south-west)

Volunteering Hours

"The substantial number of volunteering hours reported by Circles South West is a testament to the hard work of the volunteers and professionals involved. Volunteers' external use of the knowledge and skills learned through Circles, and their increased awareness of and advocacy for the potential community role in rehabilitation, also highlights the broader impact of Circles" (Research in Practice)

Individual volunteering hours are recorded for each individual volunteer in every Circle:

- *Direct volunteering* involves contact between the volunteer and core member.
- *Indirect volunteering* involves Circle work when the core member is not present, such as training and supervision.

It is important to note that these figures *include data for completed Circles only* and the numbers would be substantially higher were active Circles included.

Reporting on 78 Circles there were:

- a total of 17,674 volunteering hours
- 7,438.5 direct volunteering hours plus 10,235.5 indirect volunteering hours
- This equates to 227 volunteering hours per Circle
- This represents a staggering £293,035 overall, or £3756 per Circle¹¹

Volunteering Experience

"Volunteers' feedback presents a positive picture of volunteering with Circles South West, describing how organisational values align those of the individual, providing vital support from the community, helping rehabilitate people who have committed sexual offences and furthering the goal of 'No More Victims'" (Research in Practice)

⁹Using the RiP identified average no. of 227 hours per circle

¹⁰ Using £16.58 per hour as the UK median hourly wage for "Business and public service associates" (ONS, 2020)

¹¹ Using £16.58 per hour as the UK median hourly wage for "Business and public service associates" (ONS, 2020)

Table 2: Aggregate responses from 154 volunteers representing 64 Circles

| %age Volunteers (n=154) | category |
|-------------------------------|---|
| 100% | Volunteer felt able to cope with the emotional pressure of volunteering for Circles |
| 99% | Volunteers thought the training adequately prepared them for their Circles |
| 99% | Volunteers felt supported by Circles South West throughout their time volunteering |
| 99% | Volunteers felt safe volunteering with Circles |
| 99% | Volunteering expectations were met |
| 96% | Volunteers recommend volunteering with Circles South West |
| 92% | Volunteers found their experiences volunteering with Circles rewarding |
| 88% | Volunteers believed their Circle had a positive relationship with the core member |
| 86% | Volunteers thought their Circle volunteers were well matched to the needs of the core member |
| 83% | Volunteers intend to volunteer in another Circle in the future |
| 75% | Volunteers reported learning valuable new skills through volunteering with Circles |
| 66% | Volunteers said they had applied new skills gained outside of Circles |
| 61% | Volunteers thought their core member was accountable to the Circle |
| 49% | Volunteers thought the Circle had significantly reduced the core member's risk of reoffending |

"As an organisation, Circles South West was described as "supportive", "friendly", "professionally run", "remarkably able", "efficient" and "well organised", with an important mission. It was felt to be making a difference. It is considered welcoming and inclusive with volunteers feeling appreciated and supportive" (Research in Practice)

What Volunteers said

Volunteer comments relating to the above responses include those below. The full evaluation reports can be found on our website here [Making a difference - Circles South West \(circles-southwest.org.uk\)](https://circles-southwest.org.uk)

99% Volunteers felt supported by Circles South West throughout their time volunteering

"Support from Circles South West and coordinators in particular was highly regarded, with coordinators considered available and understanding, holding regular reviews and checking in proactively, while also being reachable through phone, text and email. Some knew support was available but reported not needing to use it, others described receiving practical and emotional advice and support through their coordinators" (Research in Practice)

99% Volunteers thought the training adequately prepared them for their Circles

"By far the most insightful and useful training I have experience[d] throughout my professional career" (Volunteer)

"The training Circles provides for its volunteers is outstanding, provided by passionate coordinators who have a lot of experience in this field and who are very knowledgeable about the topic" (Volunteer)

99% volunteering expectations were met

"I've come to the conclusion that the model does work, enhanced by individual differences on both sides ... there's also an element of chemistry (magic?!) where the whole is greater than the sum of all the parts" (Volunteer)

"I do not personally feel that I have definitely made a significant difference to our core member. However, Circles SW as an organisation has exceeded my expectations" (Volunteer)

92% Volunteers found their experiences volunteering with Circles rewarding

"Volunteers were extremely positive about their experiences. Building relationships and positive changes in core members' attitudes and behaviours were referenced as being especially rewarding. Comments also cited improved situations in school, voluntary work or accommodation. Other comments referenced seeing a core member begin to open up and trust the Circle, gain a fresh perspective and make progress toward their goals. Understandably, volunteering experiences appeared directly linked with Circles' outcomes, with those reaching a "good" conclusion often described as rewarding" (Research in Practice)

"Volunteers overwhelmingly reported feeling safe in Circle" (Ibid)

"It is rewarding to see that he is no longer so dependent on the Circle and is building a life again, making new friends and maintaining employment" (Volunteer)

"It has been a very rewarding year. CM has definitely grown in confidence and all of our friendships have grown too. CM has started college, started dating, made friends, learned to use public transport, had a job and more! It has been really special to be able to achieve all of these goals he had" (Volunteer)

88% volunteers believed their Circle had a positive relationship with the core member

"[I]t was very gratifying to see the CM begin to trust us and open up, enjoy our company and recognise that he could form positive relationships with adults" (Volunteer)

"[H]e appreciated that we were there for him without judging him, and gave him the opportunity to have a continuing dialogue where he was seen as a human being rather than a sex offender" (Volunteer)

61% volunteers thought their core member was accountable to the Circle

"I believe we have helped the core member in other aspects of his life, for example, helping him engage in conversation rather than merely talking at people" (Volunteer)

"I believe the circle has offered CM the right amount of support and accountability, which he lacked prior to his offence" (Volunteer)

"[A] friendship had begun and the CM did not want to let [group] down" (Volunteer)

REVIEW OF FINANCIAL POSITION AND PERFORMANCE

This second year of the Covid pandemic has seen unprecedented pressure on the funding of charities, and CSW has not been immune to that. However we have been successful in attracting a level of funding in line with our original budget. The Charity's recognised income in 2021-22 amounted to £520,119 (previous year £505,434). This method of recognising income is in accordance with the SORP, the Charities Statement of Recommended Practice, and indicates an increase of income in the year of 3%.

Of the recognised income that related to grants, £159,303 (32%) consisted of public sector grants and £335,041 (68%) was derived from Trusts and Foundations. Of the total recognised income, £127,588 unexpended funds were brought forward from the previous year. Expenditure amounted to £478,325 (previous year £380,798). At the year-end £155,409 (previous year £127,588) was carried forward to fund activities in future years. The Charity held £68,830 in advance payments for work to be delivered in 2022-23 all of which was held in cash at the Charity's bank.

The continuing impact of the pandemic on the Charity's operations has been significant meaning we are still 'catching up' with restricted income and associated work deferred from the previous year due to 'Covid-slide'¹². This includes Circles, group work and training. Adapting provision within the context of Covid restrictions and context has also continued to have an impact on costs, for example, paying for community facilities for Circle meetings that would have ordinarily taken place at cafes that were closed or highly restricted; increased numbers of volunteer training events to accommodate smaller numbers of volunteers.

The Charity's current cash position is sufficient to meet commitments. In addition, the Charity has promises of some £235,756 covering work to be delivered in 2022-23 (which, together with sums carried forward and deferred income, represents 86% of the approved budget) and the Trustees therefore consider that the charity will have sufficient cash resources to meet liabilities as they fall due, and that it is appropriate to prepare the accounts on a going concern basis.

The majority of our funding is short term (often 1 year) and we therefore continue to invest significant time and resources into income generation to ensure sustainability going forward. Our desire to achieve a diverse funding mix has seen a broadening of our offer to test out on a small scale the delivery of 'fee earning' training and consultancy for professionals, developing their skills and knowledge in working with people who have sexually harmed.

We acknowledge financial support from a number of grant-making bodies and other donors. We have received a number of individual and Quaker group donations. Some donors have asked to remain anonymous. We are very grateful to them all.

¹² 'Covid-slide' meaning that, with funder agreement, we deferred some restricted income expenditure until such time these services could be delivered

Reserves Policy

The Board has consistently reviewed the Reserves Policy over time, and particularly since 2017 when it was defined in terms of the need to fund an immediate stop to all activities and subsequent closedown.

Last year the Board again considered the rationale for the Reserves policy with a view to determining a 'sufficient' level of required reserves so as to ensure that the funding stream devoted to our core operations is maximised. Recognising the duty to balance the needs of current and future service users, we need to have sufficient reserves to allow our charity to cover known liabilities and contingencies, absorb set-backs and take advantage of change and opportunity.

The Board therefore considered the need to provide within reserves a) a level of working capital that protects the continuity of our core work, b) a level of funding for unexpected opportunities, and c) cover for risks such as unforeseen expenditure or unanticipated loss of income. To that end the trustees considered that unrestricted reserves of £37,000 would meet that 'sufficiency' objective.

At the 2021-22 year-end the total level of unrestricted general reserves is £57,712 (previous year £43,739). The Board has considered this level of reserves and has designated £15,000 to extend the delivery of 'fee earning' training and consultancy for professionals, and £5,000 to support the delivery of Inform Young People, a new complementary service licenced by the Lucy Faithfull Foundation (see below).

It remains the Charity's policy not to start any Circle without committed funding for that Circle to continue running for at least a year, and in the opinion of the Trustees there has never been a time when existing commitments were at actual risk of default.

RISK MANAGEMENT

The Board of Trustees maintain a comprehensive risk register, focusing on key areas of risk for the Charity. All risk areas have named leads whose role is to have oversight, monitor for any changes, ensure necessary control measure are in place and that actions required are implemented. Risk areas are graded on the severity of their impact against their likelihood of occurrence using a standard matrix, with a sliding scale of concern using a "traffic light" system going from green to red. All risks areas are reviewed quarterly by the Board but those highlighted as of most concern are subject to more regular review as required and with extra monitoring deemed appropriate by the Board.

Risk areas are grouped under five strategic headings:

Governance Risks Summary - The skill set and representation of the Board is an issue that was identified as a potential gap. There are also a number of Trustees who have been loyally and enthusiastically serving CSW for a number of years and a need was seen to refresh, bring in new perspectives and consider succession planning. Four new Trustees were appointed to the Board this year to refresh our approach with one replacing our longstanding secretary who retired in 2021. The Board aims to have between 8 and 12 members at any one time to ensure resilience and assist with succession planning, currently the

Board has 11 members. As we emerged from the Covid pandemic we retained all our staffing, our finances remained resilient and we have started to increase both. The Charity has produced a new Equity, Diversity and Inclusion (EDI) strategy, undertaken training and is incorporating EDI principles within our overall strategy.

Operational Risks Summary - Due to our policy of continuing to operate Circles, where possible and safe to do so, we have seen referral rates and funding levels begin to return to pre-pandemic levels. Referrals continue to outstrip capacity and we have continued to explore other funding opportunities to try and bridge that gap. Changes in Police and Crime Commissioners as a result of the 2021 elections has produced some challenges but, overall, our funding and delivery levels have remained stable and have started to increase post pandemic. We have qualified on the Probation Service Dynamic Framework and hope to soon have the opportunity to tender to provide Probation Service funded Circles in the South West region. Due some unknowns in this process there may be a risk of competition from another organisation if we are unsuccessful in this bid but because of many unknowns it is hard to quantify this risk; the Board will continue to monitor. There have been no Safeguarding issues or other critical incidents reported this year.

Financial Risks Summary - Sustainable funding is an ongoing risk for the charity and is constantly monitored by the CEO and Board of Trustees. Most bids for funding are for fixed term only and often for specific purposes (restricted funds). This requires a constant round of bidding for new funds, none of which is guaranteed to be successful. We also need to ensure we have sufficient unrestricted funding to maintain general operations. Bidding for new funds continued while innovative funding was explored to bolster our operations. The risks of moving into new areas were thoroughly examined by the Board, balancing the dangers of being seen to be going “off mission” versus the need to ensure we have general funds to continue with core business. This is something that is under constant review to ensure we always deliver in line with the overall objectives of the charity. We constantly monitor our reserves and have managed to maintain and actually increase them slightly. It is important to maintain the right level of reserves to ensure the financial health and security of the organisation but also that the maximum amount of funding goes into our frontline services. This is frequently reviewed at a Board level.

Compliance Risk Summary - In order for CSW to continue to work effectively and be a trusted partner we need to ensure we comply with all necessary laws, regulations and standards to operate as a charitable organisation. Our desire is always to exceed standards where it is practical to do so. This year’s pandemic regulations and guidance has provided further challenges to ensure we operate safely within an unpredictable environment with thorough risk assessment and management processes being a key part of our strategic leadership model.

FUTURE PLANS

The Charity continues to develop and be sustained, in the short term at least. We are passionate in our desire to impact positively on the lives of people who have sexually harmed as part of their desistance journey, thereby making an important contribution to the prevention of sexual abuse in south west communities. We are committed to growing our provision for those secondary victims who are impacted but who often go unheard and unsupported; the non-offending partners, family and friends. Imparting our knowledge and expertise in this field to other professionals through training and consultancy serves to educate, promoting greater understanding and contributing to a more effective multi-agency workforce.

The outlook for the next 12 months is good as we look forward to a year without Covid impacting in the way it has for the previous 2 years since March 2020. We are excited about plans for 2022-23 that include the introduction of new services (e.g. Inform Young People), an extension of the Circles Reboot national programme and, we hope, Circles commissioned by HMPPS via the Probation Services Dynamic Framework.

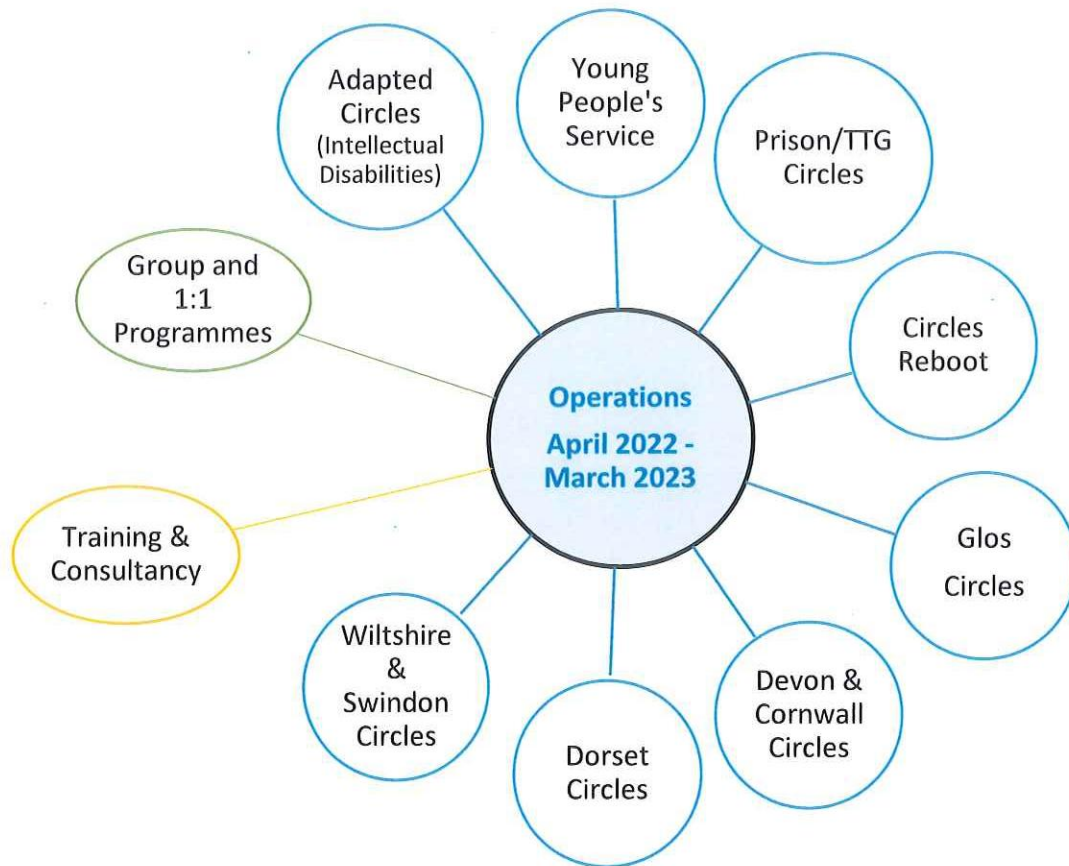
CSW Operations 2022-23

The diagram below shows CSW's planned operations for 2022-23. Some services are fully funded, some require match-funding to release secured funds, and others are 'spot purchased', becoming available as new funds are sourced.

New for 2022-23 is Inform Young People, an educational programme delivered on an individual basis for 13-21 year olds (up to 25 years for people with additional needs) involved in technology-assisted harmful sexual behavior (TA-HSB). CSW is licenced by the Lucy Faithfull Foundation to provide Inform Young People in South West England, staff having recently undertaken training. We are grateful to the Paul Hamlyn Foundation for supporting this important new initiative.

Sustainability of the Charity is dependent on demonstrating that what we do works. We have commissioned Research in Practice to undertake a Phase 2 independent evaluation of Circles, extending their original evaluation to capture a significant additional number of completed datasets, from which to draw statistically significant conclusions pertaining to the adapted Circles projects. This evaluation contributes to the growing UK evidence base on the effectiveness of CoSA as well as informing programme development and replication. The Phase 2 final report is due for publication at the end of 2022.

In addition, Research in Practice is separately evaluating Inform Plus (pilot project in Devon and Cornwall, commissioned by Devon and Cornwall OPCC), funded by Nota (National Organisation for the Treatment of Abusers) Research Committee.



Income Generation and Added Value

In 2021-22 we secured £159,303 from local public sector sources and £360,816 from voluntary sources, including grants from independent funders, donations and earned income. This means that for every £1 of public funding, we levered in £2.26 (£2.73 previous year) from other sources.

We are proud of our achievements in relation to income generation but this remains a constant challenge: more time is dedicated to fundraising and, despite our best attempts, full cost recovery is rare. Most funders want to fund innovation rather than core costs or 'more of the same' and we have diversified our offer to maximise this potential. However, our experience is that there is less availability of funding for our 'core work' and increasing competition for scarce resources. This appears to have been compounded by the pandemic.

The majority of our referrals for Circles are from Probation and, despite ongoing discussions, we currently receive no financial contribution from the Probation Service. However, we have qualified on the Probation Services Dynamic Framework and understand that there will be commissioning of Circles across the country in 2022-23.

We have secured funding for 2022-23 from four of the five South West OPCCs but the potential for funding beyond March 2022 is as yet unknown and we anticipate will be impacted by the new priorities of the PCCs new in post in 2021.

Managing Growth and Sustainability

We do not underestimate the challenge of sustaining our work in the current climate. We are committed to ensuring that our staff and volunteers are provided with an infrastructure fit for purpose and the support they need to ensure they deliver the best service possible. With this in mind and following consultation, we introduced a 'staff well-being' allocation in our 2021-22 budget. The associated 'emotional well-being' support from an independent counsellor, away days and rewards and benefit platform have been well received. With the support of Lloyds Bank Foundation Enhance Programme, RootsHR has been commissioned to undertake a pay and benefits review, the results of which will be adopted in 2022-23, aligned with our staff restructure (see above).

As we move into the new financial year, frequent review and adjustment of our sustainability strategy is absolutely key in order to ensure that services can be maintained and the Charity is in as stable position as possible in a constantly changing environment.

ACKNOWLEDGEMENT AND THANKS

Our 2021-22 achievements have been reliant on our partnerships with, and support from, a growing number of trusts and foundations, statutory and voluntary organisations and understanding individuals. Alongside enormous thanks to our volunteers for their time and expertise, we wish to thank sincerely the following donors:

- Avon & Somerset Police Community Trust (Commissioners' Fund)
- Circles UK
- Devon & Cornwall Police & Crime Commissioner
- Dorset Police & Crime Commissioner
- Friends Therapeutic Community Trust (Glebe House)
- Garfield Weston Foundation
- Gloucestershire Police & Crime Commissioner
- Henry Smith Charity
- Lloyds Bank Foundation
- Nota Research Committee
- Paul Hamlyn Foundation
- Sir James Reckitt Charity
- South Gloucestershire Council
- The AB Charitable Trust
- The Bromley Trust
- The National Lottery Community Fund
- The Triangle Trust
- Torbay NHS Foundation
- Volunteering Matters
- Wiltshire & Swindon Police & Crime Commissioner

(This list does not include new donors for 2022-23)

Besides the above support, we have appreciated donations from individual volunteers, members of the public and Quaker groups who share our vision. We are also grateful for in-kind support received from many community groups who have promoted and supported our work in various ways.

TRUSTEES' RESPONSIBILITIES

The Trustees (who are also the Directors of Circles South West Limited for the purposes of company law) are responsible for preparing the report of the Trustees and the financial statements in accordance with applicable law and Financial Reporting Standards applicable in the UK and Republic of Ireland (FRS102).

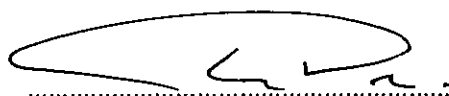
Company law requires the Trustees to prepare financial statements for each financial year, which give a true and fair view of the state of affairs of the charitable company and of the incoming resources and application of resources, including the net income or expenditure of the charitable company for that period. In preparing those financial statements, the Trustees are required to:

- select suitable accounting policies and then apply them consistently;
- make judgements and estimates that are reasonable and prudent;
- observe the methods and principles in the Charities SORP;
- state whether applicable UK accounting standards have been followed, subject to any material departures disclosed and explained in the financial statements;
- prepare the financial statements on the going concern basis unless it is inappropriate to presume that the charitable company will continue in operation.

The Trustees are responsible for keeping proper accounting records, which are such as to disclose, with reasonable accuracy, the Charity's financial position at any time and to enable the Trustees to ensure that the accounts comply with the Charities Act 2011, the Charity (Accounts and Reports) Regulations 2008 and the provisions of the Charity's constitution. They are also responsible for safeguarding the Charity's assets and hence for taking reasonable steps for the prevention and detection of fraud and other irregularities.

The Trustees' report has been prepared in accordance with the special provisions relating to small companies within Part 15 of the Companies Act 2006.

Approved by the Board of Trustees on 22/9/22 and signed on its behalf by:



.....

Tim Price (Chair)

**CIRCLES SOUTH WEST
(A COMPANY LIMITED BY GUARANTEE)
INDEPENDENT EXAMINER'S REPORT TO THE TRUSTEES
FOR THE PERIOD ENDED 31 MARCH 2022**

I report to the charity Trustees on my examination of the accounts of Circles South West (the Company) for the year ended 31 March 2022 which are set out on pages 33 to 39.

Responsibilities and basis of report

As the charity trustees of the Company (and also its directors for the purposes of company law) you are responsible for the preparation of the accounts in accordance with the requirements of the Companies Act 2006 ('the 2006 Act').

Having satisfied myself that the accounts of the Company are not required to be audited under Part 16 of the 2006 Act and are eligible for independent examination, I report in respect of my examination of your Charity's accounts carried out under section 145 of the Charities Act 2011 ('the 2011 Act'). In carrying out my examination I have followed the Directions given by the Charity Commission under section 145(5)(b) of the 2011 Act.

Independent examiner's statement

Since the company's gross income exceeded £250,000 your examiner must be a member of a body listed in section 145 of the 2011 Act. I confirm that I am qualified to undertake the examination because I am a member of Institute of Chartered Accountants in England and Wales, which is one of the listed bodies.

I have completed my examination. I confirm that no matters have come to my attention in connection with the examination giving me cause to believe:

- (1) accounting records were not kept in respect of the Company as required by section 386 of the 2006 Act; or
- (2) the accounts do not accord with those records; or
- (3) the accounts do not comply with the accounting requirements of section 396 of the 2006 Act other than any requirement that the accounts give a 'true and fair' view which is not a matter considered as part of an independent examination; or
- (4) the accounts have not been prepared in accordance with the methods and principles of the Statement of Recommended Practice for accounting and reporting by charities [applicable to charities preparing their accounts in accordance with the Financial Reporting Standard applicable in the UK and Republic of Ireland (FRS 102)].

I have no concerns and have come across no other matters in connection with the examination to which attention should be drawn in this report in order to enable a proper understanding of the accounts to be reached.

This report is made solely to the Company's Trustees, as a body, in accordance with Part 4 of the Charities (Accounts and Reports) Regulations 2008. My work has been undertaken so that I might state to the Company's Trustees those matters I am required to state to them in an Independent examiner's report and for no other purpose. To the fullest extent permitted by law, I do not accept or assume responsibility to anyone other than the Company and the Company's Trustees as a body, for my work or for this report.



J Fletcher FCA
Chartered Accountants
Crown Chambers
Bridge Street
Salisbury
SP1 2LZ

Date: 10 October 2022

CIRCLES SOUTH WEST
(A COMPANY LIMITED BY GUARANTEE)
STATEMENT OF FINANCIAL ACTIVITIES
INCORPORATING AN INCOME AND EXPENDITURE ACCOUNT
FOR THE YEAR ENDING 31 MARCH 2022
COMPANY REGISTRATION NO. (ENGLAND AND WALES) 07369778

| | | 2022 | | | 2021 |
|--|--------------|--------------------|------------------|----------------|----------------|
| | | Unrestricted funds | Restricted funds | Total | Total |
| | | £ | £ | £ | £ |
| INCOME FROM | | | | | |
| | Notes | | | | |
| Donations and Legacies | | | | | |
| Grants | | | | | |
| Private Sector | 2a | 123,079 | 211,962 | 335,041 | 287,986 |
| Public Sector | 2a | 14,248 | 145,055 | 159,303 | 135,550 |
| Donations | 2b | 249 | 0 | 249 | 326 |
| Investments | | | | | |
| Bank and deposit interest | 2c | 8 | 0 | 8 | 108 |
| Other incoming resources | 2d | 16,299 | 9,219 | 25,518 | 81,464 |
| TOTAL | | 153,883 | 366,236 | 520,119 | 505,434 |
| EXPENDITURE ON | | | | | |
| Charitable activities | 3 | 139,910 | 338,415 | 478,325 | 380,798 |
| TOTAL | | 139,910 | 338,415 | 478,325 | 380,798 |
| NET INCOME/(EXPENDITURE) BEFORE OTHER RECOGNISED GAINS AND LOSSES | | 13,973 | 27,821 | 41,794 | 124,636 |
| Transfer between funds | 8 | - | - | - | - |
| NET MOVEMENT IN FUNDS | | 13,973 | 27,821 | 41,794 | 124,636 |
| RECONCILIATION OF FUNDS: | | | | | |
| Total funds brought forward | | 43,739 | 127,588 | 171,327 | 46,691 |
| Total funds carried forward | | 57,712 | 155,409 | 213,121 | 171,327 |

The statement of financial activities includes all gains and losses in the period. All income and expenditure derives from continuing activities.

CIRCLES SOUTH WEST
(A COMPANY LIMITED BY GUARANTEE)
BALANCE SHEET
AS AT 31 MARCH 2022
COMPANY REGISTRATION NO. (ENGLAND AND WALES) 07369778

| | Notes | 2022 | 2021 |
|---------------------------------------|-------|----------------|----------------|
| CURRENT ASSETS | | | |
| Debtors | 4 | 2,880 | 240 |
| Cash at bank and in hand | | 302,640 | 258,552 |
| | | <u>305,520</u> | <u>258,792</u> |
| LIABILITIES | | | |
| Creditors falling due within one year | 5 | (92,399) | (87,465) |
| Net current assets | | 213,121 | 171,327 |
| Total net assets | | <u>213,121</u> | <u>171,327</u> |
| THE FUNDS OF THE CHARITY | | | |
| Unrestricted Funds | 7 | 57,712 | 43,739 |
| Restricted Funds | 8 | 155,409 | 127,588 |
| TOTAL CHARITY FUNDS | | <u>213,121</u> | <u>171,327</u> |

The Trustees consider that the company is entitled to exemption from the requirement to have an audit under the provisions of section 477 of the Companies Act 2006 ("the Act") and members have not required the company to obtain an audit for the year in question in accordance with section 476 of the Act.

The Trustees acknowledge their responsibilities for complying with the requirement of the Companies Act 2006 with respect to accounting records and the preparation of financial statements.

The financial statements have been prepared in accordance with the provisions available to companies subject to the small companies regime.

The financial statements were approved and authorised by the Trustees below.

Approved by the board of trustees on 22/9/22 and signed on its behalf by:



Tim Price (Chair)

CIRCLES SOUTH WEST
(A COMPANY LIMITED BY GUARANTEE)
CASH FLOW STATEMENT
FOR THE YEAR ENDING 31 MARCH 2022
COMPANY REGISTRATION NO. (ENGLAND AND WALES) 07369778

| | 2022 | 2021 |
|--|----------------|----------------|
| | £ | £ |
| <i>Cashflows from Operating Activities</i> | | |
| Net Cash provided by Operating Activities | 44,088 | 117,932 |
| Cash and cash equivalents at the beginning of the period | 258,552 | 140,620 |
| Cash and cash equivalents at the end of the period | 302,640 | 258,552 |
| Net Change in cash and cash equivalents in the period | 44,088 | 117,932 |

Notes to Cashflow Statement

Reconciliation of net income to net cash flows from operating activities

| | 2022 | 2021 |
|---|----------------|-----------------|
| | £ | £ |
| Net income for the reporting period | 41,794 | 124,636 |
| Adjustments for: | | |
| Depreciation | - | - |
| (increase)/decrease in debtors | (2,640) | 18,623 |
| Increase/(decrease) in creditors | 4,934 | (25,327) |
| Net cash provided by operating activities | 44,088 | 117,932 |

Analysis of cash and cash equivalents

| | 2022 | 2021 |
|---------------------------------|----------------|----------------|
| | £ | £ |
| Cash in hand and at bank | 302,640 | 258,552 |
| Total cash and cash equivalents | 302,640 | 258,552 |

**CIRCLES SOUTH WEST
(A COMPANY LIMITED BY GUARANTEE)
NOTES TO THE ACCOUNTS
FOR THE YEAR ENDING 31 MARCH 2022**

Note

1 ACCOUNTING POLICIES

a. Basis of preparing the financial statements

Circles South West meets the definition of a public benefit entity under FRS 102. Assets and liabilities are initially recognised at historical cost or transaction value unless otherwise stated in the relevant accounting policy notes.

These accounts (financial statements) have been prepared using the historical cost convention except any items disclosed in the accounting policies as being shown at fair value and are presented in sterling, which is the functional currency of the entity. Balances within the accounts have been rounded to the nearest £1. The accounts are prepared under the historical cost convention, in accordance with the Statement of Recommended Practice: Accounting and Reporting by Charities preparing their accounts in accordance with the Financial Reporting Standard applicable in the United Kingdom and the Republic of Ireland (FRS 102) and the Financial Reporting Standard applicable in the United Kingdom and Republic of Ireland (FRS 102) and the Companies Act 2006.

b. Preparation of the accounts on a going concern basis

The Trustees consider that there are no material uncertainties about the charity's ability to continue as a going concern.

c. Company status

The charitable company is a private company limited by guarantee incorporated in England and Wales with the registered number 07369778. The members of the charity are the Trustees named on page 2. The registered office is 7 Madeira Road, Bournemouth BH1 1QL.

In the event of the company being wound up, the liability in respect of the guarantee is limited to £10 per member of the company.

d. Fund accounting

Funds held by the charity fall into the following categories:

(i) Unrestricted general funds:

These are funds which can be used, at the discretion of the Trustees, in accordance with the charitable objectives of the charity and which have not been designated for other purposes.

(ii) Unrestricted designated funds:

These are funds which have been designated for particular future projects

(iii) Restricted funds:

These are funds that can only be used by the charity for particular purposes. Restrictions arise either when they are specified by the donor or when funds are raised for a specific purpose.

**CIRCLES SOUTH WEST
(A COMPANY LIMITED BY GUARANTEE)
NOTES TO THE ACCOUNTS
FOR THE YEAR ENDING 31 MARCH 2022**

e. Income

Income is recognised when the charity has entitlement to it, it is certain that the income will be received, and its monetary value can be measured with sufficient reliability.

Grants and donations for specific purposes are accounted for as receivable and are treated as forming restricted funds

f. Expenditure

Expenditure is recognised on an accruals basis as a liability is incurred. Contractual arrangements and performance related grants are recognised as services are supplied. Costs of generating funds are those costs incurred in attracting voluntary income. Charitable activities comprise those costs incurred by the charity in the delivery of its activities and services for its beneficiaries. It includes both costs that can be allocated directly to such activities and those costs of an indirect nature necessary to support them.

g. Charitable activities

Charitable expenditure includes all expenditure directly related to the objects of the charity and governance and other support costs

h. Governance costs

These costs represent the costs incurred by the charity in respect of management and administrative expenditure and compliance with statutory and legal requirements

i. Tangible fixed assets

Tangible fixed assets costing over £1,000 are capitalised. Assets costing less than this are written off on purchase. Depreciation is provided at rates calculated to write off the cost of each asset over its expected useful life.

j. Debtors

Debtors are measured at the amounts the charity anticipates it will receive from a debt or the amount it has paid in advance for goods or services.

k. Cash at bank and in hand

Cash at bank and in hand includes cash and cash on deposit.

l. Liabilities

Liabilities are measured at the amounts the charity anticipates it will pay to settle a debt or the amount it has received as an advance payment for goods or services it must provide.

m. Financial Instruments

The charity only has financial assets and liabilities of a kind that qualify as financial instruments. They are initially recognised at transaction value and subsequently measured at their settlement value.

n. VAT

Income and expenditure is stated gross of VAT as it is not recoverable. CSW is not registered for VAT.

CIRCLES SOUTH WEST
(A COMPANY LIMITED BY GUARANTEE)
NOTES TO THE ACCOUNTS
FOR THE YEAR ENDING 31 MARCH 2022

Note

2 INCOME - by fund

| | 2022 | | | 2021 | | |
|---------------------------------|--------------------|------------------|----------------|--------------------|------------------|----------------|
| | Unrestricted funds | Restricted funds | Total | Unrestricted funds | Restricted funds | Total |
| | £ | £ | £ | £ | £ | £ |
| a. Grants | | | | | | |
| Private sector | 123,079 | 211,962 | 335,041 | 112,657 | 175,329 | 287,986 |
| Public sector | 14,248 | 145,055 | 159,303 | 12,230 | 123,320 | 135,550 |
| | 137,327 | 357,017 | 494,344 | 124,887 | 298,649 | 423,536 |
| b. Donations | 249 | - | 249 | 326 | - | 326 |
| c. Bank/Deposit Interest | 8 | - | 8 | 108 | - | 108 |
| d. Other income | 16,299 | 9,219 | 25,518 | 21,275 | 60,189 | 81,464 |
| Total income | 153,883 | 366,236 | 520,119 | 146,596 | 358,838 | 505,434 |

Other income includes £5,965 received from Covid-19 Business Continuity measures (2021 £62,564)

3 EXPENDITURE ON CHARITABLE ACTIVITIES

| | 2022 | | | 2021 | | |
|--|--------------------|------------------|----------------|--------------------|------------------|----------------|
| | Unrestricted funds | Restricted funds | Total | Unrestricted funds | Restricted funds | Total |
| | £ | £ | £ | £ | £ | £ |
| Rehabilitation of offenders | | | | | | |
| Direct costs | - | 326,726 | 326,726 | - | 220,588 | 220,588 |
| Governance costs | - | 11,689 | 11,689 | - | 11,367 | 11,367 |
| External training and overheads | | | | | | |
| Direct costs | 134,197 | - | 134,197 | 144,780 | - | 144,780 |
| Governance costs | 5,713 | - | 5,713 | 4,063 | - | 4,063 |
| | 139,910 | 338,415 | 478,325 | 148,843 | 231,955 | 380,798 |

Governance costs

| | 2022 | 2021 |
|--|---------------|---------------|
| | £ | £ |
| Finance management and bookkeeping costs | 14,777 | 14,030 |
| Accountancy charges | 500 | 500 |
| Independent examination fee | 1,080 | 900 |
| Trustees Meeting expenses | 1,045 | - |
| | 17,402 | 15,430 |

CIRCLES SOUTH WEST
(A COMPANY LIMITED BY GUARANTEE)
NOTES TO THE ACCOUNTS
FOR THE YEAR ENDING 31 MARCH 2022

Note

4 DEBTORS

| | 2022 | 2021 |
|---------|--------------|-------------|
| | £ | £ |
| Debtors | 2,880 | 240 |
| | 2,880 | 240 |

5 CREDITORS

| | 2022 | 2021 |
|-----------------|---------------|---------------|
| | £ | £ |
| Trade creditors | 8,488 | 5,805 |
| Other creditors | 8,171 | 11,066 |
| Accruals | 6,910 | 4,900 |
| Deferred income | 68,830 | 65,694 |
| | 92,399 | 87,465 |

Deferred Income

| | 2022 | 2021 |
|------------------------------|---------------|---------------|
| | £ | £ |
| Balance at 1 April 2021 | 65,694 | 98,629 |
| Amounts released to income | (65,694) | (87,629) |
| Amounts deferred in the year | 68,830 | 54,694 |
| Balance at 31 March 2021 | 68,830 | 65,694 |

Deferred income comprises funding received during the year to be recognised as incoming resources in 2022-23. £33,773 (2021 £30,000) related to unrestricted funds and £35,057 (2021 £35,694) to restricted funds

6 ANALYSIS OF STAFF COSTS

| | 2022 | 2021 |
|-----------------------|----------------|----------------|
| | £ | £ |
| Salaries and wages | 307,649 | 273,008 |
| Social security costs | 25,748 | 22,025 |
| Pension costs | 11,912 | 10,575 |
| Total | 345,309 | 305,608 |

There were no employees with emoluments over £60,000.

The average monthly headcount was 12 (2021 10).

During the year, no Trustee received remuneration or benefits in kind (2021 £nil).

During the year 3 Trustees were reimbursed £238 for travel and office expenses (2021 £nil).

The CEO, Ms Jo Burden, is considered to be the key management person of the charity. The total paid to the CEO during the year (excluding pension payments) was £52,276 (2021 £50,827).

All staff costs are divided among the operational funds according to staff time expended.

CIRCLES SOUTH WEST
(A COMPANY LIMITED BY GUARANTEE)
NOTES TO THE ACCOUNTS
FOR THE YEAR ENDING 31 MARCH 2022

Notes

7 UNRESTRICTED FUNDS
2022

| | Balance at 1 April 2021 | Movement in funds Income | Expenditure | Transfers between funds | Balance at 31 March 2022 |
|-----------------|-------------------------------|-----------------------------|------------------|-------------------------------|--------------------------------|
| General Fund | 43,739 | 153,883 | (139,910) | (20,000) | 37,712 |
| Designated fund | - | - | - | 20,000 | 20,000 |
| | 43,739 | 153,883 | (139,910) | - | 57,712 |

2021

| | Balance at 1 April 2020 | Movement in funds Income | Expenditure | Transfers between funds | Balance at 31 March 2021 |
|-----------------|-------------------------------|-----------------------------|------------------|-------------------------------|--------------------------------|
| General Fund | 40,209 | 146,596 | (148,843) | 5,777 | 43,739 |
| Designated fund | 5,730 | - | - | (5,730) | - |
| | 45,939 | 146,596 | (148,843) | 47 | 43,739 |

8 RESTRICTED FUNDS
2022

| | Balance at 1 April 2021 | Movement in funds Income | Expenditure | Transfers between funds | Balance at 31 March 2022 |
|-------------------------------------|-------------------------------|-----------------------------|------------------|-------------------------------|--------------------------------|
| Rehabilitation of Offenders: | | | | | |
| Young People's Services | 25,681 | 73,336 | (78,100) | - | 20,917 |
| Adapted Circles | 14,901 | 43,310 | (50,831) | - | 7,380 |
| Prison Project | 11,735 | 86,902 | (54,017) | - | 44,620 |
| Reboot Circles | - | 19,757 | (19,757) | - | - |
| Inform/Inform Plus | 2,802 | 31,666 | (15,068) | - | 19,400 |
| Devon & Cornwall Circles | 30,334 | 39,956 | (31,798) | - | 38,492 |
| Dorset Circles | 13,296 | 37,516 | (35,812) | - | 15,000 |
| Wiltshire Circles | 14,112 | 26,944 | (31,456) | - | 9,600 |
| Befriending Services | 14,727 | 6,849 | (21,576) | - | - |
| | 127,588 | 366,236 | (338,415) | - | 155,409 |

2021

| | Balance at 1 April 2020 | Movement in funds Income | Expenditure | Transfers between funds | Balance at 31 March 2021 |
|-------------------------------------|-------------------------------|-----------------------------|------------------|-------------------------------|--------------------------------|
| Rehabilitation of Offenders: | | | | | |
| Young People's Services | 93 | 73,351 | (47,763) | - | 25,681 |
| Adapted Circles | 124 | 29,431 | (14,654) | - | 14,901 |
| Prison Project | 88 | 63,528 | (51,881) | - | 11,735 |
| Inform/Inform Plus | 98 | 37,453 | (34,749) | - | 2,802 |
| Gloucestershire Circles | 111 | 13,172 | (13,283) | - | - |
| Devon & Cornwall Circles | 74 | 57,663 | (27,403) | - | 30,334 |
| Dorset Circles | 49 | 51,352 | (38,105) | - | 13,296 |
| Wiltshire Circles | 68 | 17,888 | (3,844) | - | 14,112 |
| Befriending Services | - | 15,000 | (273) | - | 14,727 |
| External Trading & Consultancy | 47 | - | - | (47) | - |
| | 752 | 358,838 | (231,955) | (47) | 127,588 |

At year-end Trustees established a Designated Fund to provide funds in 2022-23 for a training Manager (£15,000) and (£5,000) towards the cost of 8 interventions within the Inform Young People project. All other Unrestricted sums were consolidated into Reserves at year-end.

CIRCLES SOUTH WEST
(A COMPANY LIMITED BY GUARANTEE)
NOTES TO THE ACCOUNTS
FOR THE YEAR ENDING 31 MARCH 2022

9 SUMMARY OF FUNDS

| | Balance at 1 April 2021 | Movement in funds Income | Expenditure | Transfers between funds | Balance at 31 March 2022 |
|-----------------|-------------------------------|-----------------------------|------------------|-------------------------------|--------------------------------|
| General Fund | 43,739 | 153,883 | (139,910) | (20,000) | 37,712 |
| Designated Fund | - | - | - | 20,000 | 20,000 |
| Restricted fund | 127,588 | 366,236 | (338,415) | - | 155,409 |
| | 171,327 | 520,119 | (478,325) | - | 213,121 |
| | Balance at 1 April 2020 | Movement in funds Income | Expenditure | Transfers between funds | Balance at 31 March 2021 |
| General Fund | 40,209 | 146,596 | (148,843) | 5,777 | 43,739 |
| Designated Fund | 5,730 | - | - | (5,730) | - |
| Restricted fund | 752 | 358,838 | (231,955) | (47) | 127,588 |
| | 46,691 | 505,434 | (380,798) | - | 171,327 |

Restricted fund purposes:

Circles of Support and Accountability in Dorset, Wiltshire, Devon & Cornwall are for adults who have been convicted of serious sexual offences who have been assessed as medium to very high risk of re-offending/causing serious harm.

The non-location specific projects provide Circles of Support and Accountability for younger people (Young People's Service); for adults with intellectual difficulties (Adapted Circles); and for adults convicted of sexual offences started in prison prior to their release and then on into the community (Prison Project).

The Inform Plus/Inform projects provide group and individual support programmes for individuals who have harmed sexually online and for the adult partners/family/friends impacted.

Her Majesty's Prison & Probation Service 'Telephone Befriending Service' was provided in partnership with the national charity Volunteering Matters and is part of the VSCE Emergency Partnership. It provided a telephone support service for People on Probation assessed as particularly vulnerable in the Covid Pandemic.

Circles Reboot is designed for adults (low to medium risk with high need) who have been convicted of internet offences involving indecent images of children – pilot being led by Circles UK with national evaluation.

Funds received in the year specifically for 2022-23 are included in deferred income (Note 5)

CIRCLES SOUTH WEST
(A COMPANY LIMITED BY GUARANTEE)
NOTES TO THE ACCOUNTS
FOR THE YEAR ENDING 31 MARCH 2022

10 ANALYSIS OF NET ASSETS BETWEEN FUNDS

| 2022 | Unrestricted funds | Restricted funds | Total 2022 |
|--------------------------|---------------------------|-------------------------|-------------------|
| Debtors | 2,880 | - | 2,880 |
| Cash at bank and in hand | 95,035 | 207,605 | 302,640 |
| Current liabilities | (40,203) | (52,196) | (92,399) |
| | 57,712 | 155,409 | 213,121 |
| 2021 | Unrestricted funds | Restricted funds | Total 2021 |
| Debtors | 240 | - | 240 |
| Cash at bank and in hand | 49,739 | 208,813 | 258,552 |
| Current liabilities | (6,240) | (81,225) | (87,465) |
| <i>Total</i> | 43,739 | 127,588 | 171,327 |

11 RECOGNITION OF INCOME

Income is recognised when the charity is entitled to it and not when it incurs the related expense.

Unspent income for specific expenditure is carried forward as restricted funds.

If the income were to be recognised so that it was matched to the expenditure within the accounts, the income for the year would have been as follows:

| | 2022 | 2021 |
|------------------|----------------|----------------|
| | £ | £ |
| Pro forma income | 426,604 | 290,969 |

12 RELATED PARTY TRANSACTIONS

There were no related party transactions during the year

13 COVID-19 PANDEMIC

The emergency measures imposed by the Government to control the COVID 19 pandemic restricted the ability of Circles South West to operate normally during 2021-22. While the situation is returning to a degree of normality, restrictions on normal operations are still being felt. The Trustees continue to work to minimise the impact of the exceptional challenges caused by the pandemic and the measures taken by the Government to control it and the effects of the pandemic do not result in any adjustment being needed to the value of assets and liabilities at the balance sheet date.

The Trustees of Circles South West remain confident that they will be able to overcome the continuing operational difficulties and as a consequence these accounts have been prepared on a going concern basis.