

REGISTERED COMPANY NUMBER: 07363597 (England and Wales)
REGISTERED CHARITY NUMBER: 1138260

TRUSTEES' REPORT AND
UNAUDITED FINANCIAL STATEMENTS FOR THE YEAR ENDED 31 DECEMBER 2023
FOR
RIDE HIGH LIMITED
(A COMPANY LIMITED BY GUARANTEE)

Ad Valorem Accountancy Services Limited
Chartered Certified Accountants
2 Manor Farm Court
Old Wolverton Road
Old Wolverton
Buckinghamshire
MK12 5NN

RIDE HIGH LIMITED

CONTENTS OF THE FINANCIAL STATEMENTS FOR THE YEAR ENDED 31 DECEMBER 2023

	Page
Reference and Administrative Details	1
Trustees' Report	2 to 5
Impact Report	6 to 17
Independent Examiner's Report	18
Statement of Financial Activities	19
Balance Sheet	20 to 21
Cash Flow Statement	22
Notes to the Financial Statements	23 to 32

RIDE HIGH LIMITED

REFERENCE AND ADMINISTRATIVE DETAILS FOR THE YEAR ENDED 31 DECEMBER 2023

TRUSTEES	Dr K Ali Mr J H Geary Mrs M E T McColl Mr A J Oddie Mr S J Piper Mr G J Sandmann Mrs L S Styles Mr P D B Zeidler Mr R Harper (appointed 25/9/2023)
COMPANY SECRETARY	Mr M Gala-Shah
REGISTERED OFFICE	Ride High Equestrian Centre Redland Drive Loughton Milton Keynes Buckinghamshire MK5 8EJ
REGISTERED COMPANY NUMBER	07363597 (England and Wales)
REGISTERED CHARITY NUMBER	1138260
INDEPENDENT EXAMINER	Ad Valorem Accountancy Services Limited Chartered Certified Accountants 2 Manor Farm Court Old Wolverton Road Old Wolverton Buckinghamshire MK12 5NN

The Trustees, (who are also Directors of the Charity for the purposes of the Companies Act), present their Annual Report together with the Financial Statements of Ride High Limited for the year ended 31 December 2023. The Trustees confirm that the Annual Report and Financial Statements of the Company comply with the current statutory requirements, the requirements of the Company's governing document and the provisions of the Charities Statement of Recommended Practice (Charities SORP (FRS102))

Since the company qualifies as small under section 383, the strategic report required of medium and large companies under The Companies Act 2006 (Strategic Report and Directors' report) Regulations 2013 is not required.

OBJECTIVES AND ACTIVITIES

Summary of the Objectives of the Charity set out in its Governing Document

To act as a resource for young people aged between five and twenty-five who are experiencing difficulties in their daily lives by organising programmes of physical, educational and other activities as a means of:

- (a) advancing in life and helping young people by developing their skills, capacities and capabilities to enable them to participate in society as independent, mature and responsible individuals;
- (b) advancing education;
- (c) providing recreational and leisure-time activity in the interest of social welfare for people living in the area of benefit who have need by reason of poverty or social and economic circumstances and/or mental health problems arising from medical conditions with a view to improving the conditions of life of such children and young persons.

**TRUSTEES' REPORT
FOR THE YEAR ENDED 31 DECEMBER 2023**

OBJECTIVES AND ACTIVITIES

Summary of the main activities undertaken for the public benefit

In planning our activities for the period we kept in mind the Charity Commission's guidance on public benefit at our Trustee Board meetings.

All children and young people [C&YP] are referred to Ride High by professionals or agencies that work with disadvantaged C&YP who are struggling with daily life. The C&YP may be in foster care, a young carer, grieving after the death of a family member, suicidal or self-harming, a victim of abuse or neglect, NEET (Not in Education, Employment or Training), or living in an environment dominated by ill health, drugs or poverty. Referrals are generally made when intervention by agencies such as Milton Keynes Children and Adolescent Mental Health Service, MK Council's social workers, special schools, primary or secondary schools are not providing sufficient support or obtaining positive outcomes. Our goal is to effect a long-term transformation in the lives of severely disadvantaged C&YP using horses and associated clubroom based educational activities.

The C&YP work in small groups with the same teachers and volunteers each week. In this way we aim to provide them with a safe and happy environment where they can make friends, develop self-confidence and learn a range of social, practical and life skills. We work with many of the C&YP over the medium to long term and for those who are old enough we try to facilitate work experience placements or routes to further education.

Using horses is an effective means of connecting with C&YP. Time spent riding and caring for horses provides them with a challenge and something to look forward to each week. As they learn new skills their confidence and self-esteem increases. They learn to feel calmer, to manage negative feelings and anxieties, and to feel much happier in themselves. At Ride High we work with C&YP for between three and twelve months. We provide consistency, safety, support and friendship. We give C&YP the opportunity to engage in activities beyond riding to help them develop their skills, confidence and aspirations for the future. By the time they leave Ride High the vast majority are fully engaged in an active, positive life again.

We accept all disadvantaged C&YP, regardless of religion, ethnicity, gender and social or economic background.

Further details regarding the activities, achievements and outcomes of the Charity are included in the 2023 Impact Report, on pages 6-17.

Additional details of objectives and activities

All our activities are free to the C&YP. However, all those who have attended Ride High for more than twelve weeks are expected to contribute by helping other groups or in fundraising activities.

We have five full-time members of staff, three part-time members, and four part-time minibus drivers, but rely heavily on volunteers to help the C&YP within our clubroom. The dedication and reliability of our volunteers has a highly beneficial impact on the quality of the service we offer. Our volunteers report that they enjoy a huge sense of achievement working with the C&YP and that they feel real "ownership" and commitment to the future success of Ride High.

We transport all C&YP between their schools/homes and our clubroom. Without this service the C&YP would not be able to attend as their parents do not usually have the facilities to transport them.

STRATEGIC REPORT

Financial position

The results for the period are set out in the Financial Statements. There has been an excess of expenditure over income resulting in net deficit for the period of £20,388.

STRATEGIC REPORT

Financial review

Reserves policy

Ride High's policy is to hold cash and cash equivalents of at least £100,000. Cash and cash equivalents exclude funds that are restricted to capital projects and other ventures that are outside the scope of standard operating expenditure. This is to ensure that, in the event of a significant loss in funding, the charity has sufficient financial resources to deliver all planned programmes, and provide the necessary time to secure additional funding and ensure the charity remains financially sustainable thereafter.

Going concern

After making appropriate enquiries, the Trustees have a reasonable expectation that the Company has adequate resources to continue in operational existence for a period of no less than one year from the date of signing the Trustees' Report. For this reason they continue to adopt the going concern basis in preparing the Financial Statements. Further details regarding the adoption of the going concern basis can be found in the Accounting Policies.

Funds in deficit

There are no funds in deficit.

Further financial review details

The financial performance of the charity has been strong in 2023, with total income up significantly on the prior year. Our revenue streams include donations, profits from fundraising events, income from successful grant applications, and referral income from educational institutions that connect children and young people to our programmes.

A significant highlight of the year was the continued success of our flagship fundraising event, the Winter Ball, which raised over £110,000. This event not only provided an opportunity to showcase the charity and its work but also generated substantial returns. Additionally, our quarterly fundraising events, including the Golf Day, have continued to perform well, ensuring a steady flow of income throughout the year.

Our grant income has seen significant growth. In 2023, we benefited from substantial grants, most notably £125,000 from the National Lottery as part of a multi-year award, and over £54,000 from the Henry Smith Foundation, of which half was received in-year. This increase in grant income, alongside other sources, has strengthened our financial position and enabled us to expand our programmes.

Ride High has also improved its balance sheet by proactively paying off over £50,000 in long-term debts, achieving a debt-free status. This was possible, in part, due to the receipt of principal and interest on an intercompany loan to our trading subsidiary, The Ride High Equestrian Centre (RHEC). In 2023, we received a principal repayment of £50,000, with further repayments anticipated in the coming years, ensuring the full repayment of the initial £383,082 loan by the end of 2026.

As we look ahead, the financial outlook remains strong, as Ride High will continue to benefit from significant multi-year funding from National Lottery, and the Henry Smith foundation. Through this, and our comprehensive calendar of fundraising events and other sources of income, we are confident that we can continue to deliver on the objectives of the charity for the year ahead.

STRUCTURE, GOVERNANCE AND MANAGEMENT

Governing document

The charity is controlled by its governing document, a deed of trust, and constitutes a limited company, limited by guarantee, as defined by the Companies Act 2006.

STRUCTURE, GOVERNANCE AND MANAGEMENT

Recruitment and appointment of new trustees

The Company operates selection criteria for recruitment of Trustee Directors so as to ensure that their skills and experience reflect the governance and operational needs of the Company. Prospective Trustee Directors are interviewed by all the existing Trustee Directors. New Trustee Directors are not appointed until satisfactory Disclosure and Barring Service checks have been completed.

Organisational structure

The Company has a Trustee Board that meets regularly to provide leadership, strategic direction and financial control. A sub-committee of the Trustee Board meets as necessary to manage key issues relating to the provision of children's services at our Centre.

The Chief Executive of the Company, Ms O F Sugdon attends meetings of the Trustee Board.

Internal Controls and Mitigation of Major Risks

The Trustee Board has an established risk management policy, and carries out regular risk identification exercises including review by the Trustee Board of major risks and the adequacy of the systems in place to mitigate them.

Disabled Employees

It is the company's policy to give employment to disabled persons wherever practicable.

Staff and Volunteers

We have five full time members of staff, three part-time members, four part-time minibuss drivers and around 25 volunteers to help with a range of activities and services. These include driving the C&YP to and from the club, fundraising, clubroom sessions, administration, graphic design, website design, legal services and maintenance.

Political and charitable donations

No charitable donations were made during the year. No contributions to political organisations were made during the year.

Trustees' report, incorporating a strategic report, approved by order of the board of trustees, as the company directors, on X July 2024 and signed on the board's behalf by:

Mr S J Piper - Trustee



IMPACT REPORT 2023

WELCOME

We are delighted to present Ride High's 2023 Impact Report.

Given the challenging times in which we are operating we are thrilled that we have continued to succeed in our mission to transform vulnerable young lives in Milton Keynes and surrounding areas. This annual report captures some of our greatest achievements.

As the demand for our unique service continues to increase year-on-year, it has long been our ambition to expand our programme to more children. Following a significant award from the National Lottery Community Fund, we were finally able to increase the number of children we support on a weekly basis by 50%. This resulted in our working with 337 children in need in 2023 – the most we've ever helped in any one year.

Such an expansion required a tremendous amount of preparation, including the recruitment of new staff and volunteers, training and development for our growing team, not-to-mention considerable logistical and operational planning. Our team is now all the stronger and the benefits of our efforts are reflected in the progress the children have made.

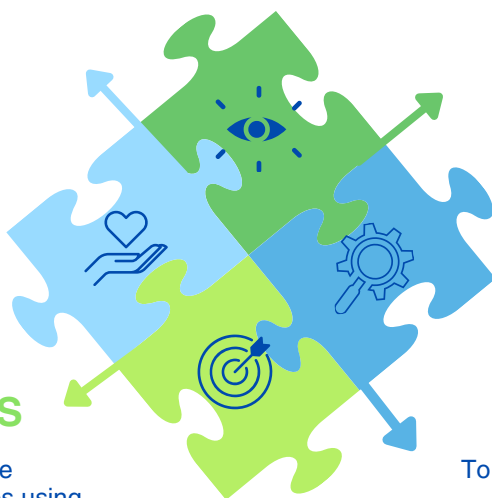
We take great pride in how we meticulously measure our impact and adapt our programme to meet the needs of our community. You will see how our outcomes data and feedback from members, their carers and referrers highlights how Ride High has increased the confidence, resilience, happiness and the health and wellbeing of our beneficiaries.

In 2023 we enjoyed greater engagement within the local community, working closely with a variety of businesses, and forging new collaborations with organisations including the Thames Valley Violence Reduction Unit.

OUR STRATEGY

VALUES

Encouraging
Achieving
Belonging
Inspiring



OBJECTIVES

Ride High will provide bespoke programmes using horses as a critical enabler to improve the mental health, wellbeing, and long-term outcomes of vulnerable and disadvantaged children and young people.

VISION

To transform the lives of vulnerable and disadvantaged children and young people.

MISSION

To support a minimum of 300 children and young people per year in Milton Keynes and to expand our offering within the next five years by opening at least one more site.

IN 2023 WE
WORKED WITH

120

CHILDREN EACH
WEEK

WE'VE
SUPPORTED

2,000+

CHILDREN IN
TOTAL

WE WERE
ESTABLISHED

15

YEARS AGO

Our focus has always been local, but having now demonstrated our value over 15 years, confidence in our service is rapidly growing regionally and nationally. Awards from prestigious funders including the Henry Smith Foundation and the Masonic Charitable Foundation are a testament to the quality of our service, and are allowing us to strengthen our presence in Milton Keynes whilst developing plans to expand geographically and establish sites in additional locations where there is a need.

So, whilst this report looks back on the highlights of 2023 and aims to acknowledge those who have helped us get this far, we are also looking forward and invite existing and new supporters to join us on our journey. Together we are making a difference.

We hope you enjoy reading our report.

Thank you.

Olivia Sugdon
CEO

Phil Zeidler
Chair of Trustees



We were chosen to meet His Majesty the King on his celebratory visit to Milton Keynes to mark its new status as a city. Ride High was proud to be included in the bid for city status.



RISING TO THE CHALLENGE

Milton Keynes is a vibrant new city within which we are very proud to play an important role. But many young people face huge challenges as a result of poverty, neglect and abuse, isolation and poor mental health, which make them vulnerable to a number of risks and can have a detrimental impact on their futures.

At Ride High we address these challenges by offering them a fun and educational programme that promotes physical activity in the great outdoors, that encourages the creation of positive relationships with people and animals, that develops skills and knowledge which drives self-confidence and self-worth and helps to enforce a healthy lifestyle.

By attending Ride High every week for up to a year, we provide young people with stability and consistency, and the transformations we witness are quite incredible.



We helped the MK Food Bank to break the Guinness World Record for the number of food cans lined up in a row.

"Riding makes me feel calm and sessions in the clubroom are great fun. I don't worry and feel anxious like I used to. I take each day as it comes but the difference is that I now actually want to see tomorrow".

Ride High member.

30%

OF CHILDREN
ARE LIVING IN
POVERTY*

KNIFE CRIME IN
THE THAMES
VALLEY REGION
TRIPLED
BETWEEN 2015
AND 2023**

25%

OF 11-16 YEAR
OLDS SUFFER
WITH POOR
MENTAL HEALTH*

IN MILTON KEYNES

12%

OF NEIGHBOURHOODS
ARE IN THE TOP 20%
MOST DEPRIVED IN
ENGLAND***

67%

OF THE MOST DEPRIVED
CHILDREN ARE NOT
GETTING THE
RECOMMENDED DAILY
EXERCISE*

"I am impressed with Ride High's provision for vulnerable young people facing challenging circumstances. After visiting the charity and speaking to the members I can see how their experiences with the horses have the power to act as a great early intervention or rehabilitation for those who may be at risk or have already been involved in offending. We whole-heartedly support their efforts as part of our commitment to the community".

Dan Gidman, Police Sergeant, Inclusion & Engagement, Violence Reduction Unit, Thames Valley Police.



We transformed our run-down orchard into a beautiful community sensory garden for our members and beneficiaries of other community groups to enjoy.



Greencore THE GRUMPY COOK

With food donations from Greencore and The Grumpy Cook we're able to provide our members with a healthy lunch every day.

*Vital Signs MK 2024. **Thames Valley Police.***Vital Signs MK 2023.



BATON OF HOPE

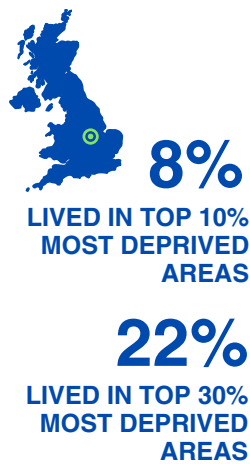
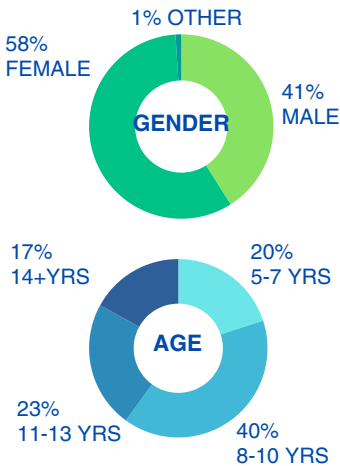
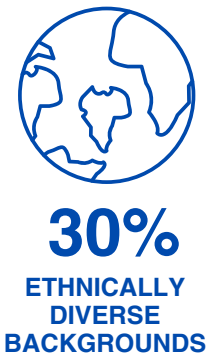
Ride High was very proud to carry the Baton Of Hope on part of its journey through Milton Keynes. The Baton of Hope UK Tour has become the UK's biggest ever suicide prevention initiative. We stand with all those involved across the whole country to raise awareness and more support of suicide prevention and mental health challenges.

OUR IMPACT

"During difficult times, the incredible team and the beautiful horses have given my daughter a positive focus and a wonderful experience. She's more settled and more focused. The service is invaluable and has made such a difference to her".

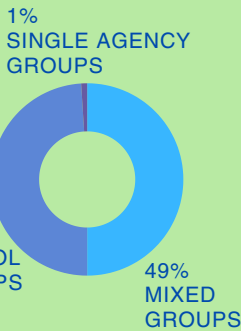
Parent of Ride High member.

MEMBERSHIP



Children are referred individually by professionals and are allocated a group when a place becomes available.

Schools and agencies also refer groups of children they identify as needing additional support.



REFERRALS WERE RECEIVED FROM
47
AGENCIES

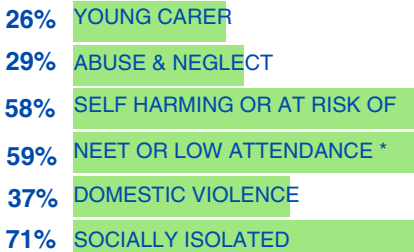
12
SCHOOLS TOOK PART IN OUR SCHOOLS PROGRAMME

REASONS FOR REFERRAL



80%

HAVE MENTAL HEALTH CHALLENGES AND SEVERAL OTHER MOUNTAINS TO OVERCOME...



*Not in Education, Employment or Training.

OUR OUTCOMES



ATTENDANCE
85%



94%
OF MEMBERS ACHIEVED THE RIDE HIGH AWARD



CHILDREN PARTICIPATED IN FUN AND EDUCATIONAL TRIPS



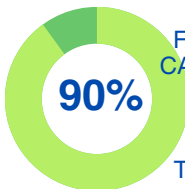
72%
ATTAINED A POSITIVE DESTINATION ON LEAVING RIDE HIGH



LOOK FORWARD TO COMING TO RIDE HIGH



HAVE FRIENDS AT RIDE HIGH



FEEL THEY CAN TALK TO STAFF ABOUT THEIR TROUBLES

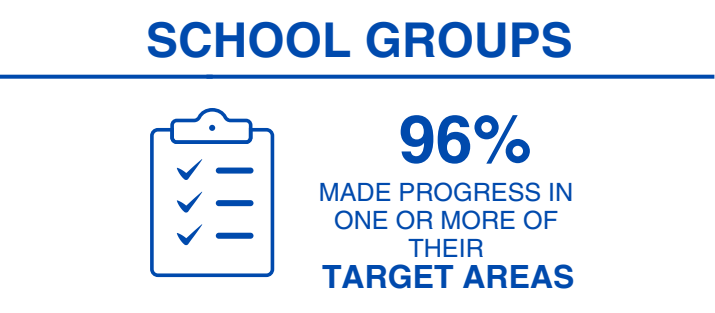


OUR OUTCOMES

We use a combination of methods to measure the impact Ride High has on children and young people. One such method is our Wellbeing Measure which allows our members to reflect on their own progress helping them to recognise their achievements. An initial assessment identifies areas of particular need for each individual to focus on and we support them to meet their goals - regularly repeating the measure to track their progress.

The Wellbeing Measure focuses on six key areas. Experience shows us that the most commonly shared areas where members require support are Self-esteem and confidence and Emotional resilience. Strong progress in these areas often leads to higher achievements in others.

Our data shows us that those with the highest needs achieve a higher level of progress, and often, that younger members make the most progress. This supports our early intervention programmes, but also our desire to expand our programmes specifically for teenagers.



WHERE CHILDREN MADE PROGRESS



LEVEL OF PROGRESS ACHIEVED

BY THOSE WITH THE HIGHEST NEED



OUR STORIES

Poppy was referred to Ride High with severe anxiety and a fear of leaving the house, which resulted in her missing four years of school. When Poppy joined us she was unsurprisingly quiet and awkward in a new setting. However, it was clear early on that she found great comfort in being with the horses, and she progressed quickly with her riding and groundwork. Within just a few months you'd find Poppy grooming on the yard with a beaming smile on her face. She began to talk openly to visitors about how she loved the responsibility of looking after the horses, and how being trusted to care for the horses boosted her confidence. Armed with her new-found skills and confidence she's now looking to the future. She attended an interview at Moulton College, and was offered a place on their Equine Management course.

"Ride High ignited a passion within Poppy and empowered her to look to the future and not let her anxieties get in the way". Poppy's dad.



"His confidence has improved and coming to Ride High has helped him emotionally and at school. He lights up when he's around the horses and always comes home from Ride High happy and chilled. It's meant the world to us, and it's meant the world to him".

Archie's mum.



Martina was referred to Ride High by her social worker. Her first weeks at secondary school coincided with a family breakdown and she had to move house. It was a very challenging time which knocked her confidence. She spent most of her time alone and became severely isolated and depressed.

It took a little while to settle at Ride High but with the support of Mark, her Club Leader and in a safe environment she made new friends and started to speak out. Initially Martina was quite intimidated by the horses, but learning to look after them and to ride gave her a huge confidence boost. ***"For the first time I enjoyed learning and being around people and it showed me I can achieve anything in the right environment".***

Ride High provided Martina with the space to be who she wanted to be. She took great pride in her achievements and extended her efforts to school. Martina went on to complete her GCSE's and is now happy at college.

LOUGHTON SCHOOL

"We have been attending Ride High for a few years now. The children we send may have Special Educational Needs or Social, Emotional and Mental Health Needs. I have accompanied the children and the impact Ride High has on them is wonderful to see. After their sessions they skip back into school and talk about what they've done at Ride High and how much they've enjoyed it. The horses are wonderful and so patient with the children; they appear to know and understand what they need. The team at Ride High really go the extra mile to ensure the children are all engaged. The difference we see in the children week on week is amazing; their increase in confidence is particularly impressive".

Lucy Lock, Assistant Head for Inclusion & Key Stage One, Loughton Manor First School.



LIZZIE, 15

Home life for Lizzie was chaotic. Her family social worker referred her to Ride High to provide a positive and calming influence. Lizzie joined our Portfolio group for teenagers having never ridden a horse before. Naturally she was nervous, but with support from the Ride High team, within her first month she was delighted to be told she was 'riding like a professional'!

"It's funny, I feel so relaxed when I'm on a horse now, I just forget about everything else, and it seems like the most natural place to be".

Lizzie's new riding ability filled her with great pride, a sense of accomplishment, and helped to steer her in a positive direction. Lizzie even chose to do her work experience placement at the Ride High Equestrian Centre.



OUR PEOPLE

OUR VOLUNTEERS

Our dedicated army of volunteers support our members week-in-week-out with their riding and clubroom sessions. They are a friendly and trustworthy face for our young people. Our volunteers find their Ride High experience equally rewarding. In 2023 we created a Volunteer Handbook and developed new training opportunities to provide them with additional support for their important role.



58
REGULAR
VOLUNTEERS



VOLUNTEERS
DONATED OVER
3300
HOURS IN
2023



87%
SAY IT SUPPORTS
THEIR MENTAL
HEALTH &
WELLBEING

OUR TEAM

We are very fortunate and proud to have a friendly, caring, professional and highly skilled team leading Ride High. We are also a very happy team! We work tirelessly together to achieve our shared mission to support children with the highest needs in our community. Where possible, we support ex members to volunteer at the Ride High Equestrian Centre, and three young people have followed an apprenticeship - it's wonderful to see those we have helped in the past come full circle, join our team and give back.



80%
OF STAFF
HAVE BEEN
WITH US FOR
4-10 YEARS

"The absolute best part of volunteering every week is that I get to witness and be part of the transformation the children make in their time at Ride High."

"My involvement with Ride High has given me a whole new perspective on life and I always look forward to coming to the centre every week to see the children."

Sean, Volunteer

#VolunteersWeek

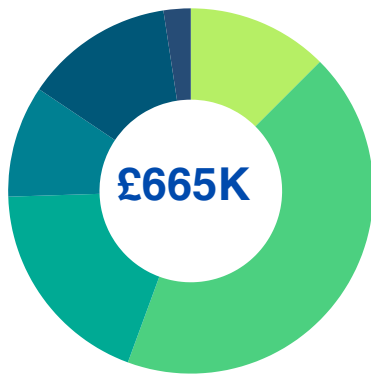


FINANCES: EVERY PENNY COUNTS

Ride High was one of 200 organisations to be awarded funding from the Youth Justice Sports Fund StreetGames, a fund to help keep vulnerable young people away from crime and antisocial behaviour. The crime severity score in Milton Keynes increased from 8.2 to 14.8 between 2013 and 2022 and knife crime and youth violence are areas of concern*.

*Vital Signs MK 2023.

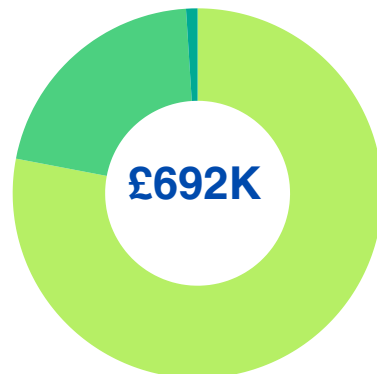
INCOME



- Grants 43.1%
- Fundraising events 18.9%
- Donations 12.5%
- Rent & Investments 13.2%
- Referrals 9.9%
- Other 2.4%

Fundraising in 2023 was unsurprisingly challenging with donations and events accounting for 14% less of our income than in the previous year. Fortunately success with our grant applications helped to fill the shortfall.

EXPENDITURE



- Direct charitable activities (including horse sessions) 78%
- Raising funds 21%
- Ensuring good governance 1%

Our services remain free to children and young people. For every £1 donated, 78p goes directly on charitable activities. To help maintain financial stability during the cost-of-living crisis, we have increased investment in our fundraising efforts.

GRANT FUNDERS



FUNDRAISING

Our fundraising events throughout the year included a Quiz at the Marshall Amplification Studio, Golf Day at Woburn Golf Club, and of course our famous Ride High Ball with a Roaring Twenties theme started the year in true style. We're grateful to everyone who supported these events and also to those who took on their own challenges and organised events to raise vital funds for Ride High.

In May we once again enjoyed watching our runners participate in the Milton Keynes Marathon Weekend - a fantastic community event.

Participation in the Big Give match funding campaigns gave our donors the opportunity to have their donations doubled for free.

We were also delighted to launch our new fundraising programme 'Hobby the Horse'.

HOBBY THE HORSE

Cawleys
local recycling • global responsibility



REEDBUT GROUP
PROTECTING THE ENVIRONMENT
THROUGH INNOVATIVE PACKAGING



Hobby the Horse is a fun and educational programme where school children design and make their own Hobby Horse using recycled materials and hold an event to fundraise for Ride High. We've created fantastic resources for teachers to make the programme fun and easy to implement and it also complements the Key Stage 1 Curriculum. Several schools across Milton Keynes participated in the launch in 2023 and the feedback has been excellent. Our aim is to expand the programme in 2024.

www.ridehigh.org/hobbythehorse

MATCH FUNDING CAMPAIGNS



Doubled donations enabled us to purchase 'Custard' a new pony for the children.

SPONSORED CHALLENGES



Digby and Max climbed to the top of Scafell Pike with their legs tied together and raised over £1000.

CORPORATE TEAM EVENTS



RIDE HIGH EVENTS



OUR CORPORATE SUPPORTERS

We are fortunate to have received support from many businesses and organisations across Milton Keynes who are just as passionate about making a difference to young lives as we are.

Together we have worked in a variety of ways that extend beyond purely financial input. Businesses have offered their time, expertise, skills and the commitment of their employees, and we have built strong partnerships that are beneficial to both parties.

Many organisations now offer their employees one or more volunteering days throughout the year, allowing them to select a charity to 'help out'. Several teams used their time to help onsite at Ride High, others organised a fundraising initiative or arranged a special event or visit to their workplace to educate our members about what they do. Some businesses offered their employees more flexibility and allowed them to use their time to volunteer at Ride High on a weekly basis for an hour or two for a term (twelve weeks). Volunteering in this way allowed individuals to have an even greater impact and a more rewarding personal experience.



Fun and educational visits are an important part of our programme. We were fortunate to visit Red Bull Racing for a behind-the-scenes tour.

Red Bull
TECHNOLOGY
CAMPUS



SIS

Teams from longstanding supporter SIS volunteered for the day in our community garden and donated Christmas gifts for our members.

AUSTIN &
CARNLEY
SOLICITORS

BAILEY
MK

**Bedford
Battery**
CO. LTD

Pasquier
Baking life's special moments

COLLINGWOOD
DESIGN CONSULTANTS

Cawleys
local recycling • global responsibility

**CLIMB
QUEST**

COUNTERACT
SYSTEMS

EMW

ellucian

**Geoffrey
Leaver**
Solicitors

Greencore

**FACILITIES
MANAGEMENT
SOLUTIONS**

imagine
creating live events

**Kate Everall
PHOTOGRAPHY**
kateeverallphotography.com

Marshall

niftylift

PLEXUS
CORPORATE

RB EQUESTRIAN

rh RESOLUTION
HOMES

RSM

sysmex

**The
Bennie
Group**

**THE
GRUMPY
COOK**



"Ride High aligns with our Stop Hunger Foundation goals by empowering those in our local community to gain new skills they can use for their future. We provide skills based and hands on volunteering opportunities for our employees with local charities."

"Ride High has been an amazing collaboration and a chance to use both these elements in one. Those who have taken part have gained a truly memorable and valuable time. We will continue to build on this and offer our employees the opportunity to do this for years to come."

Clare Coleman, Diversity,
Equity & Inclusion Lead, Sodexo.

OUR PLAN FOR 2024 & BEYOND

At Ride High we are constantly evolving our programme to ensure that we are addressing the challenges and needs faced by vulnerable children within the Milton Keynes community. We will continue to do this throughout 2024 and have exciting plans to introduce innovative educational projects in partnership with local businesses – further broadening the horizons of our young people.

Whilst we remain focused on supporting over 300 children and young people in need in Milton Keynes each year, we are also pursuing our plans to open at least one new site within the next five years, allowing us to extend our service beyond the city to areas with high needs. We are engaged in some very interesting opportunities but can't reveal any details just yet – you'll just have to watch this space!

Of course our plans are reliant on a strong team, a dedicated army of volunteers, donors, fundraisers and funders, partners and friends and we look forward to working together to achieve our ambitions.

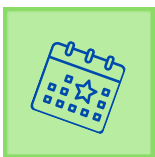
“Thank you for the incredible impact you have had on our son. His confidence has improved no end, and he now has this wonderful spring in his step. I hope you fully appreciate the difference you make to these kids’ lives. Every child should have the opportunity to go to Ride High”.

Parent of a Ride High member.



WE CAN'T DO IT WITHOUT YOU...

... it's true, we need you!
You don't always have to donate to make a difference.
Below is just a handful of the ways you can support us.



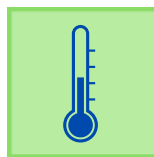
ATTEND AN EVENT

Join us at one of our annual events.



VOLUNTEER

Make a difference to young lives and gain a rewarding experience.



FUNDRAISE

Create, bake, dance - there are lots of ways you can raise money to support us.



REFER

It's free and easy for professionals to refer MK-based children to our programme.



SPONSOR HOBBY HORSE

Help us to expand our new fundraising programme.



SPONSOR

Sponsor a child to attend Ride High and change their life forever.



OFFER YOUR EXPERTISE

... to help us strengthen our outcomes.



COTY

Choose us as your Charity of the Year and work in partnership with us.



LEAVE A LEGACY

... that will transform young lives.



CHALLENGE...

... yourself to run, walk, cycle, swim... achieve your goal and get sponsored to do it.

THANK YOU

Thank you to everyone who supported us in 2023. Without you we could not have had such a positive and long-lasting impact on so many vulnerable young lives.

If you would like to discuss ways in which you can help us, or to make a donation please get in touch:



www.ridehigh.org



fundraising@ridehigh.org

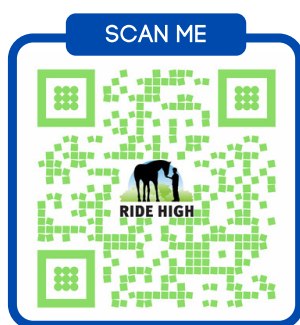


01908 696169 / 07507 308943



Ride High Equestrian Centre
Redland Drive
Loughton
MK5 8EJ

Find us on social media via @RideHighMK



RIDE HIGH

Registered charity number: 1138260.



INDEPENDENT EXAMINER'S REPORT TO THE TRUSTEES OF RIDE HIGH LIMITED

Independent examiner's report to the trustees of Ride High Limited ('the Company')

I report to the charity trustees on my examination of the accounts of the Company for the year ended 31 December 2023.

Responsibilities and basis of report

As the charity's trustees of the Company (and also its directors for the purposes of company law) you are responsible for the preparation of the accounts in accordance with the requirements of the Companies Act 2006 ('the 2006 Act').

Having satisfied myself that the accounts of the Company are not required to be audited under Part 16 of the 2006 Act and are eligible for independent examination, I report in respect of my examination of your charity's accounts as carried out under Section 145 of the Charities Act 2011 ('the 2011 Act'). In carrying out my examination I have followed the Directions given by the Charity Commission under Section 145(5) (b) of the 2011 Act.

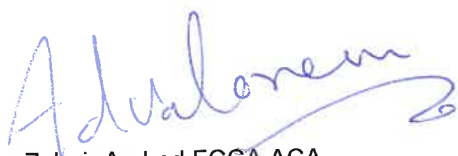
Independent examiner's statement

Since your charity's gross income exceeded £250,000 your examiner must be a member of a listed body. I can confirm that I am qualified to undertake the examination because I am a member of the Association of Chartered Certified Accountants, which is one of the listed bodies.

I have completed my examination. I confirm that no matters have come to my attention in connection with the examination giving me cause to believe:

1. accounting records were not kept in respect of the Company as required by Section 386 of the 2006 Act; or
2. the accounts do not accord with those records; or
3. the accounts do not comply with the accounting requirements of Section 396 of the 2006 Act other than any requirement that the accounts give a true and fair view which is not a matter considered as part of an independent examination; or
4. the accounts have not been prepared in accordance with the methods and principles of the Statement of Recommended Practice for accounting and reporting by charities (applicable to charities preparing their accounts in accordance with the Financial Reporting Standard applicable in the UK and Republic of Ireland (FRS 102)).

I have no concerns and have come across no other matters in connection with the examination to which attention should be drawn in this report in order to enable a proper understanding of the accounts to be reached.



Zubair Arshad FCCA ACA
The Association of Chartered Certified Accountants

Ad Valorem Accountancy Services Limited
Chartered Certified Accountants
2 Manor Farm Court
Old Wolverton Road
Old Wolverton
Buckinghamshire
MK12 5NN

21 June 2024

RIDE HIGH LIMITED

STATEMENT OF FINANCIAL ACTIVITIES FOR THE YEAR ENDED 31 DECEMBER 2023

	Notes	Unrestricted fund £	Restricted fund £	2023 Total funds £	2022 Total funds £
INCOME AND ENDOWMENTS FROM					
Voluntary income	2	148,043	309,889	457,932	351,383
Other trading activities	3	128,407	-	128,407	139,240
Investment income	4	83,810	-	83,810	82,480
Other income		<u>4,000</u>	<u>-</u>	<u>4,000</u>	<u>-</u>
Total		<u>364,260</u>	<u>309,889</u>	<u>674,149</u>	<u>573,103</u>
EXPENDITURE ON					
Raising funds		137,595	-	137,595	108,618
Charitable activities	5				
Charitable activities		<u>241,254</u>	<u>315,688</u>	<u>556,942</u>	<u>523,396</u>
Total		<u>378,849</u>	<u>315,688</u>	<u>694,537</u>	<u>632,014</u>
NET INCOME/(EXPENDITURE)		(14,589)	(5,799)	(20,388)	(58,911)
RECONCILIATION OF FUNDS					
Total funds brought forward		<u>427,156</u>	<u>15,947</u>	<u>443,103</u>	<u>502,014</u>
TOTAL FUNDS CARRIED FORWARD		<u>412,567</u>	<u>10,148</u>	<u>422,715</u>	<u>443,103</u>

The notes form part of these financial statements

RIDE HIGH LIMITED**BALANCE SHEET
31 DECEMBER 2023**

		2023	2022
	Notes	£	£
FIXED ASSETS			
Intangible assets	10	6,071	7,125
Tangible assets	11	41,021	17,655
Investments	12	<u>100</u>	<u>100</u>
		47,192	24,880
CURRENT ASSETS			
Debtors: amounts falling due within one year	13	162,450	144,163
Debtors: amounts falling due after more than one year	13	208,092	283,092
Cash at bank and in hand		<u>171,641</u>	<u>210,760</u>
		542,183	638,015
CREDITORS			
Amounts falling due within one year	14	(166,660)	(168,214)
		<u> </u>	<u> </u>
NET CURRENT ASSETS		<u>375,523</u>	<u>469,801</u>
TOTAL ASSETS LESS CURRENT LIABILITIES		422,715	494,681
CREDITORS			
Amounts falling due after more than one year	15	-	(51,578)
		<u> </u>	<u> </u>
NET ASSETS		<u>422,715</u>	<u>443,103</u>
FUNDS	18		
Unrestricted funds		412,567	427,156
Restricted funds		<u>10,148</u>	<u>15,947</u>
TOTAL FUNDS		<u>422,715</u>	<u>443,103</u>

The charitable company is entitled to exemption from audit under Section 477 of the Companies Act 2006 for the year ended 31 December 2023.

The members have not required the company to obtain an audit of its financial statements for the year ended 31 December 2023 in accordance with Section 476 of the Companies Act 2006.

The trustees acknowledge their responsibilities for

- (a) ensuring that the charitable company keeps accounting records that comply with Sections 386 and 387 of the Companies Act 2006 and
- (b) preparing financial statements which give a true and fair view of the state of affairs of the charitable company as at the end of each financial year and of its surplus or deficit for each financial year in accordance with the requirements of Sections 394 and 395 and which otherwise comply with the requirements of the Companies Act 2006 relating to financial statements, so far as applicable to the charitable company.

The notes form part of these financial statements

RIDE HIGH LIMITED

BALANCE SHEET - continued
31 DECEMBER 2023

The financial statements were approved by the Board of Trustees and authorised for issue on 21 June 2024 and were signed on its behalf by:

Mr S J Piper - Trustee

RIDE HIGH LIMITED**CASH FLOW STATEMENT
FOR THE YEAR ENDED 31 DECEMBER 2023**

		2023	2022
	Notes	£	£
Cash flows from operating activities			
Cash generated from operations	20	(29,604)	(145,574)
Finance costs paid		<u>1,470</u>	<u>(1,578)</u>
Net cash used in operating activities		<u>(28,134)</u>	<u>(147,152)</u>
Cash flows from investing activities			
Purchase of intangible fixed assets		-	(7,500)
Purchase of tangible fixed assets		(33,629)	(1,971)
Sale of tangible fixed assets		4,000	-
Interest received		<u>18,644</u>	<u>19,013</u>
Net cash (used in)/provided by investing activities		<u>(10,985)</u>	<u>9,542</u>
Change in cash and cash equivalents in the reporting period		(39,119)	(137,610)
Cash and cash equivalents at the beginning of the reporting period		<u>210,760</u>	<u>348,370</u>
Cash and cash equivalents at the end of the reporting period		<u>171,641</u>	<u>210,760</u>

The notes form part of these financial statements

**NOTES TO THE FINANCIAL STATEMENTS
FOR THE YEAR ENDED 31 DECEMBER 2023**

1. ACCOUNTING POLICIES

BASIS OF PREPARING THE FINANCIAL STATEMENTS

The financial statements of the charitable company, which is a public benefit entity under FRS 102, have been prepared in accordance with the Charities SORP (FRS 102) 'Accounting and Reporting by Charities: Statement of Recommended Practice applicable to charities preparing their accounts in accordance with the Financial Reporting Standard applicable in the UK and Republic of Ireland (FRS 102) (effective 1 January 2019)', Financial Reporting Standard 102 'The Financial Reporting Standard applicable in the UK and Republic of Ireland' and the Companies Act 2006. The financial statements have been prepared under the historical cost convention, with the exception of investments which are included at market value.

INCOME

All income is recognised in the Statement of Financial Activities once the charity has entitlement to the funds, it is probable that the income will be received and the amount can be measured reliably.

Donated services or facilities are recognised when the company has control over the item, any conditions associated with the donated item have been met, the receipt of economic benefit from the use of the company of the item is probable and that economic benefit can be measured reliably. In accordance with the Charities SORP (FRS 102), the general volunteer time of the Friends is not recognised and refer to the Trustees' Report for more information about their contribution.

On receipt, donated professional services and donated facilities are recognised on the basis of the value of the gift to the company which is the amount the company would have been willing to pay to obtain services or facilities of equivalent economic benefit on the open market, a corresponding amount is then recognised in expenditure in the period of receipt.

Income tax recoverable in relation to donations received under Gift Aid or deeds of covenant is recognised when it is received.

Income tax recoverable in relation to investment income is recognised at the time the investment income is receivable.

EXPENDITURE

Liabilities are recognised as expenditure as soon as there is a legal or constructive obligation committing the charity to that expenditure, it is probable that a transfer of economic benefits will be required in settlement and the amount of the obligation can be measured reliably. Expenditure is accounted for on an accruals basis and has been classified under headings that aggregate all cost related to the category. Where costs cannot be directly attributed to particular headings they have been allocated to activities on a basis consistent with the use of resources.

Fundraising costs are those incurred in seeking voluntary contributions and do not include the costs of disseminating information in support of the charitable activities. Support costs are those costs incurred directly in support of expenditure on the objects of the company and include project management carried out at Headquarters.

Costs of generating funds are costs incurred in attracting voluntary income, and those incurred in trading activities that raise funds.

INTANGIBLE ASSETS

Amortisation is provided at the following annual rates in order to write off each asset over its estimated useful life.

Computer software - Evenly over 7 years

TANGIBLE FIXED ASSETS

Depreciation is provided at the following annual rates in order to write off each asset over its estimated useful life.

NOTES TO THE FINANCIAL STATEMENTS - continued
FOR THE YEAR ENDED 31 DECEMBER 2023

1. ACCOUNTING POLICIES - continued

TANGIBLE FIXED ASSETS

Fixtures and fittings	- 20% on cost
Motor vehicles	- 20% on cost
Computer equipment	- 20% on cost

FUND ACCOUNTING

Unrestricted funds can be used in accordance with the charitable objectives at the discretion of the trustees.

Restricted funds can only be used for particular restricted purposes within the objects of the charity. Restrictions arise when specified by the donor or when funds are raised for particular restricted purposes.

Further explanation of the nature and purpose of each fund is included in the notes to the financial statements.

HIRE PURCHASE AND LEASING COMMITMENTS

Rentals paid under operating leases are charged to the Statement of Financial Activities on a straight line basis over the period of the lease.

PENSION COSTS AND OTHER POST-RETIREMENT BENEFITS

The charitable company operates a defined contribution pension scheme. Contributions payable to the charitable company's pension scheme are charged to the Statement of Financial Activities in the period to which they relate.

2. VOLUNTARY INCOME

	Unrestricted funds £	Restricted funds £	2023 Total funds £	2022 Total funds £
Donations	83,031	-	83,031	121,679
Similar incoming resources	13,984	65,704	79,688	80,232
Grants	<u>51,028</u>	<u>244,185</u>	<u>295,213</u>	<u>149,472</u>
	<u>148,043</u>	<u>309,889</u>	<u>457,932</u>	<u>351,383</u>

3. OTHER TRADING ACTIVITIES

	Unrestricted funds £	Restricted funds £	2023 Total funds £	2022 Total funds £
Fundraising events	<u>128,407</u>	<u>-</u>	<u>128,407</u>	<u>139,240</u>

NOTES TO THE FINANCIAL STATEMENTS - continued
FOR THE YEAR ENDED 31 DECEMBER 2023

4. INVESTMENT INCOME

	Unrestricted funds £	Restricted funds £	2023 Total funds £	2022 Total funds £
Rents received	65,166	-	65,166	63,467
Deposit account interest	1,328	-	1,328	1,499
Interest receivable - trading	17,316	-	17,316	17,514
	<u>83,810</u>	<u>-</u>	<u>83,810</u>	<u>82,480</u>

5. CHARITABLE ACTIVITIES COSTS

	Restricted funds 2023 £	Unrestricted funds 2023 £	Total funds 2023 £	Total funds 2022 £
Direct charitable activity	235,655	110,518	346,173	335,017
Support costs	5,599	122,709	128,308	100,266
Property costs	-	82,461	82,461	88,113
Total charitable activities	<u>241,254</u>	<u>315,688</u>	<u>556,942</u>	<u>523,396</u>
Total 2022	<u>187,285</u>	<u>336,111</u>	<u>523,396</u>	

6. NET INCOME/(EXPENDITURE)

Net income/(expenditure) is stated after charging/(crediting):

	2023 £	2022 £
Depreciation - owned assets	10,263	6,201
Other operating leases	69,759	112,113
Surplus on disposal of fixed assets	(4,000)	-
Computer software amortisation	<u>1,054</u>	<u>375</u>

7. AUDITORS' REMUNERATION

The Independent Examiner's remuneration amounts to an Independent Examination fee of £850 (2022 - £750).

NOTES TO THE FINANCIAL STATEMENTS - continued
FOR THE YEAR ENDED 31 DECEMBER 2023

8. TRUSTEES' REMUNERATION AND BENEFITS

There were no trustees' remuneration or other benefits for the year ended 31 December 2023 nor for the year ended 31 December 2022.

TRUSTEES' EXPENSES

There were no trustees' expenses paid for the year ended 31 December 2023 nor for the year ended 31 December 2022.

9. STAFF COSTS

	2023	2022
	£	£
Wages and salaries	343,133	295,875
Other pension costs	<u>14,104</u>	<u>5,867</u>
	<u><u>357,237</u></u>	<u><u>301,742</u></u>

The average monthly number of employees during the year was as follows:

	2023	2022
	<u>13</u>	<u>13</u>
Staff		

No employees received emoluments in excess of £60,000.

10. INTANGIBLE FIXED ASSETS

	Computer software £
COST	
At 1 January 2023 and 31 December 2023	<u>7,500</u>
AMORTISATION	
At 1 January 2023	375
Charge for year	<u>1,054</u>
At 31 December 2023	<u>1,429</u>
NET BOOK VALUE	
At 31 December 2023	<u>6,071</u>
At 31 December 2022	<u><u>7,125</u></u>

RIDE HIGH LIMITED

NOTES TO THE FINANCIAL STATEMENTS - continued FOR THE YEAR ENDED 31 DECEMBER 2023

11. TANGIBLE FIXED ASSETS

	Livestock £	Fixtures and fittings £	Motor vehicles £	Computer equipment £	Totals £
COST					
At 1 January 2023	-	8,253	46,935	2,977	58,165
Additions	<u>5,000</u>	<u>28,629</u>	<u>-</u>	<u>-</u>	<u>33,629</u>
At 31 December 2023	<u>5,000</u>	<u>36,882</u>	<u>46,935</u>	<u>2,977</u>	<u>91,794</u>
DEPRECIATION					
At 1 January 2023	-	6,545	30,988	2,977	40,510
Charge for year	<u>250</u>	<u>4,214</u>	<u>5,799</u>	<u>-</u>	<u>10,263</u>
At 31 December 2023	<u>250</u>	<u>10,759</u>	<u>36,787</u>	<u>2,977</u>	<u>50,773</u>
NET BOOK VALUE					
At 31 December 2023	<u>4,750</u>	<u>26,123</u>	<u>10,148</u>	<u>-</u>	<u>41,021</u>
At 31 December 2022	<u>-</u>	<u>1,708</u>	<u>15,947</u>	<u>-</u>	<u>17,655</u>

12. FIXED ASSET INVESTMENTS

	Shares in group undertakings £
MARKET VALUE	
At 1 January 2023 and 31 December 2023	<u>100</u>
NET BOOK VALUE	
At 31 December 2023	<u>100</u>
At 31 December 2022	<u>100</u>

There were no investment assets outside the UK.

The company's investments at the balance sheet date in the share capital of companies include the following:

PegasusforRideHigh Limited

Registered office: Ride High Equestrian Centre, Milton Keynes MK5 8EJ

Class of share:	% holding
Ordinary	100

	2023 £	2022 £
Aggregate capital and reserves	100	100
Profit for the year	<u>91,975</u>	<u>105,772</u>

NOTES TO THE FINANCIAL STATEMENTS - continued
FOR THE YEAR ENDED 31 DECEMBER 2023

13. DEBTORS

	2023	2022
	£	£
Amounts falling due within one year:		
Trade debtors	26,356	20,701
Amounts owed by group undertakings	21,077	40,180
Other debtors	93,538	69,036
Prepayments and accrued income	<u>21,479</u>	<u>14,246</u>
	<u>162,450</u>	<u>144,163</u>
Amounts falling due after more than one year:		
Other debtors	<u>208,092</u>	<u>283,092</u>
Aggregate amounts	<u>370,542</u>	<u>427,255</u>

Other debtors includes £208,092 due after more than one year and £75,000 due within one year from PegasusforRideHigh Limited.

14. CREDITORS: AMOUNTS FALLING DUE WITHIN ONE YEAR

	2023	2022
	£	£
Trade creditors	28,059	17,884
Social security and other taxes	10,225	8,787
VAT	6,136	6,846
Other creditors	4,441	1,478
Accruals and deferred income	<u>117,799</u>	<u>133,219</u>
	<u>166,660</u>	<u>168,214</u>

15. CREDITORS: AMOUNTS FALLING DUE AFTER MORE THAN ONE YEAR

	2023	2022
	£	£
Other loans (see note 16)	<u>-</u>	<u>51,578</u>

16. LOANS

An analysis of the maturity of loans is given below:

	2023	2022
	£	£
Amounts falling between one and two years:		
Other loans - 1-2 years	<u>-</u>	<u>51,578</u>

The Charity repaid the remainder of the outstanding loan to the total of £50,000 on 15th March 2023 with £1,578 interest written off.

NOTES TO THE FINANCIAL STATEMENTS - continued
FOR THE YEAR ENDED 31 DECEMBER 2023

17. ANALYSIS OF NET ASSETS BETWEEN FUNDS

	Unrestricted fund £	Restricted fund £	2023 Total funds £	2022 Total funds £
Fixed assets	36,944	10,148	47,092	24,780
Investments	100	-	100	100
Current assets	442,227	99,956	542,183	638,015
Current liabilities	(66,704)	(99,956)	(166,660)	(168,214)
Long term liabilities	-	-	-	(51,578)
	<u>412,567</u>	<u>10,148</u>	<u>422,715</u>	<u>443,103</u>

NOTES TO THE FINANCIAL STATEMENTS - continued
FOR THE YEAR ENDED 31 DECEMBER 2023

18. MOVEMENT IN FUNDS

	Balance at 1 January 2023	Income	Expenditure	Balance at 31 December 2023
	£	£	£	£
Unrestricted funds	427,156	364,260	(378,849)	412,567
Restricted funds	15,947	309,889	(315,688)	10,148
Total of funds	443,103	674,149	(694,537)	422,715

Analysis of movement in restricted funds

	Balance at 1 January 2023	Income	Expenditure	Balance at 31 December 2023
	£	£	£	£
The Mills Equus Trust	2,371	9,151	(11,522)	-
Referral Income	12,171	45,373	(48,801)	8,743
Jim Marshall	-	1,518	(1,518)	-
Marshall Trust	-	6,381	(6,381)	-
Postcode Society	-	9,917	(9,917)	-
The Parks Trust	1,405	-	-	1,405
Rotary Club	-	1,000	(1,000)	-
MK Rotary	-	756	(756)	-
MK Community Grant	-	20,000	(20,000)	-
D'oyly Charitable Trust	-	5,000	(5,000)	-
Margaret Giffen Trust	-	5,000	(5,000)	-
Carrington Charitable Trust	-	500	(500)	-
Nineveh Trust	-	2,000	(2,000)	-
CLA Charitable Trust	-	2,000	(2,000)	-
Street Games	-	16,000	(16,000)	-
On Track Education Services	-	1,212	(1,212)	-
S Rivvett Carnac	-	1,000	(1,000)	-
L&Q Place Makers	-	5,000	(5,000)	-
Shanly Foundation	-	2,500	(2,500)	-
Masonic Grant	-	5,000	(5,000)	-
BBC Children in Need	-	27,976	(27,976)	-
The Holt Trust	-	150	(150)	-
National Lottery Grant	-	104,835	(104,835)	-
Hargreaves Foundation	-	23,920	23,920	-
Henry Smith Charity	-	13,700	(13,700)	-
Duke of Westminster Foundation	-	10,000	(10,000)	-
	15,947	309,889	(315,688)	10,148

Description, nature and purpose of restricted funds

Name of restricted fund	Description, nature and purposes of the fund
-------------------------	--

NOTES TO THE FINANCIAL STATEMENTS - continued
FOR THE YEAR ENDED 31 DECEMBER 2023

18. MOVEMENT IN FUNDS - continued

The Mills Equus Trust	To provide funding for the lease obligations at the Ride High Equestrian Centre
MK Community Foundation	To provide funding for staff salaries as part of the Red Cross programme
Bernard Sunley Foundation	To repair the roof at Ride High Equestrian Centre
Referral Income	Received from schools to fund the fixed term group lessons provided to them
Jim Marshall	To repair the onsite heating
Marshall Trust	To repair the roof at Ride High Equestrian Centre
Postcode Society	To provide riding lessons for members
The Parks Trust	To repair the fencing at Ride High Equestrian Centre
Rotary Club	To fund the Mosaic Project
MK Rotary	To fund the Mosaic Project
MK Community Grant	To fund the Sensory Garden project
D'oyly Charitable Trust	To provide riding lessons for members
Margaret Giffen Trust	To provide riding lessons for members
Carrington Charitable Trust	To provide funding for the salary of the Centre Manager
Nineveh Trust	To provide riding lessons for members
CLA Charitable Trust	To provide riding lessons for members
Street Games	To fund the Sensory Garden project
On Track Education Services	To provide supported learner assistance for 12 weeks
S Rivvett Carnac	To fund the Sensory Garden project
L&Q Place Makers	To provide funding for the salary of the Club Leader
Shanly Foundation	To provide riding lessons for members
Masonic Grant	To provide funding for the salary of the Development Manager
BBC Children in Need	To provide funding for the salary of the Club Leader
The Holt Trust	To fund the Sensory Garden project
National Lottery Grant	To provide riding lessons for members
Hargreaves Foundation	To provide riding lessons for members
Henry Smith Charity	To provide funding for the salary of the Centre Manager
Duke of Westminster Foundation	To repair the roof at Ride High Equestrian Centre

19. RELATED PARTY DISCLOSURES

There were no related party transactions for the year ended 31 December 2023.

20. RECONCILIATION OF NET EXPENDITURE TO NET CASH FLOW FROM OPERATING ACTIVITIES

	2023	2022
	£	£
Net expenditure for the reporting period (as per the Statement of Financial Activities)	(20,388)	(58,911)
Adjustments for:		
Depreciation charges	11,335	6,576
Profit on disposal of fixed assets	(4,000)	-
Interest received	(18,644)	(19,013)
Finance costs	(1,470)	1,578
Decrease in debtors	31,303	106,749
Decrease in creditors	<u>(27,740)</u>	<u>(182,553)</u>
Net cash used in operations	<u><u>(29,604)</u></u>	<u><u>(145,574)</u></u>

NOTES TO THE FINANCIAL STATEMENTS - continued
FOR THE YEAR ENDED 31 DECEMBER 2023

21. ANALYSIS OF CHANGES IN NET FUNDS

	At 1/1/23 £	Cash flow £	At 31/12/23 £
Net cash			
Cash at bank and in hand	<u>210,760</u>	<u>(39,119)</u>	<u>171,641</u>
	<u>210,760</u>	<u>(39,119)</u>	<u>171,641</u>
Debt			
Debts falling due after 1 year	<u>(51,578)</u>	<u>51,578</u>	<u>-</u>
	<u>(51,578)</u>	<u>51,578</u>	<u>-</u>
Total	<u><u>159,182</u></u>	<u><u>12,459</u></u>	<u><u>171,641</u></u>