

REGISTERED CHARITY NUMBER: 1137578

Report of the Trustees and
Unaudited Financial Statements for the Year Ended 31 March 2024
for
Lancashire LGBT

CCW Limited
Chartered Accountants
295/297 Church Street
Blackpool
Lancashire
FY1 3PJ

Lancashire LGBT

Contents of the Financial Statements
for the Year Ended 31 March 2024

Report of the Trustees	3 - 29
Independent Examiner's Report	30
Statement of Financial Activities	31
Balance Sheet	32
Notes to the Financial Statements	33-38
Detailed Statement of Financial Activities	39

Lancashire LGBT
Report of the Trustees
for the Year Ended 31 March 2024

The trustees present their report with the financial statements of the charity for the year ended 31 March 2024. The trustees have adopted the provisions of Accounting and Reporting by Charities: Statement of Recommended Practice applicable to charities preparing their accounts in accordance with the Financial Reporting Standard applicable in the UK and Republic of Ireland (FRS 102) (effective 1 January 2019).

OBJECTIVES AND ACTIVITIES

Objectives and aims

The objects of the Charity are to advocate for and serve the interests of all LGBTQ+ people in Lancashire.

The aim of the Charity is to support lesbian gay bisexual and trans people to be happier healthier and better connected. Short term objectives are to continue to deliver and expand our core support offer; improving service provision externally to be more inclusive through our Quality Mark scheme and training offer as well as building partnerships and creating allies and champions. The long-term objective is to use agreed strategies to secure funding and ensure the sustainability of the charity.

The Trustees have referred to the guidance contained in the Charity Commission's general guidance on public benefit when reviewing the charity's aims and objectives and in planning future objectives.

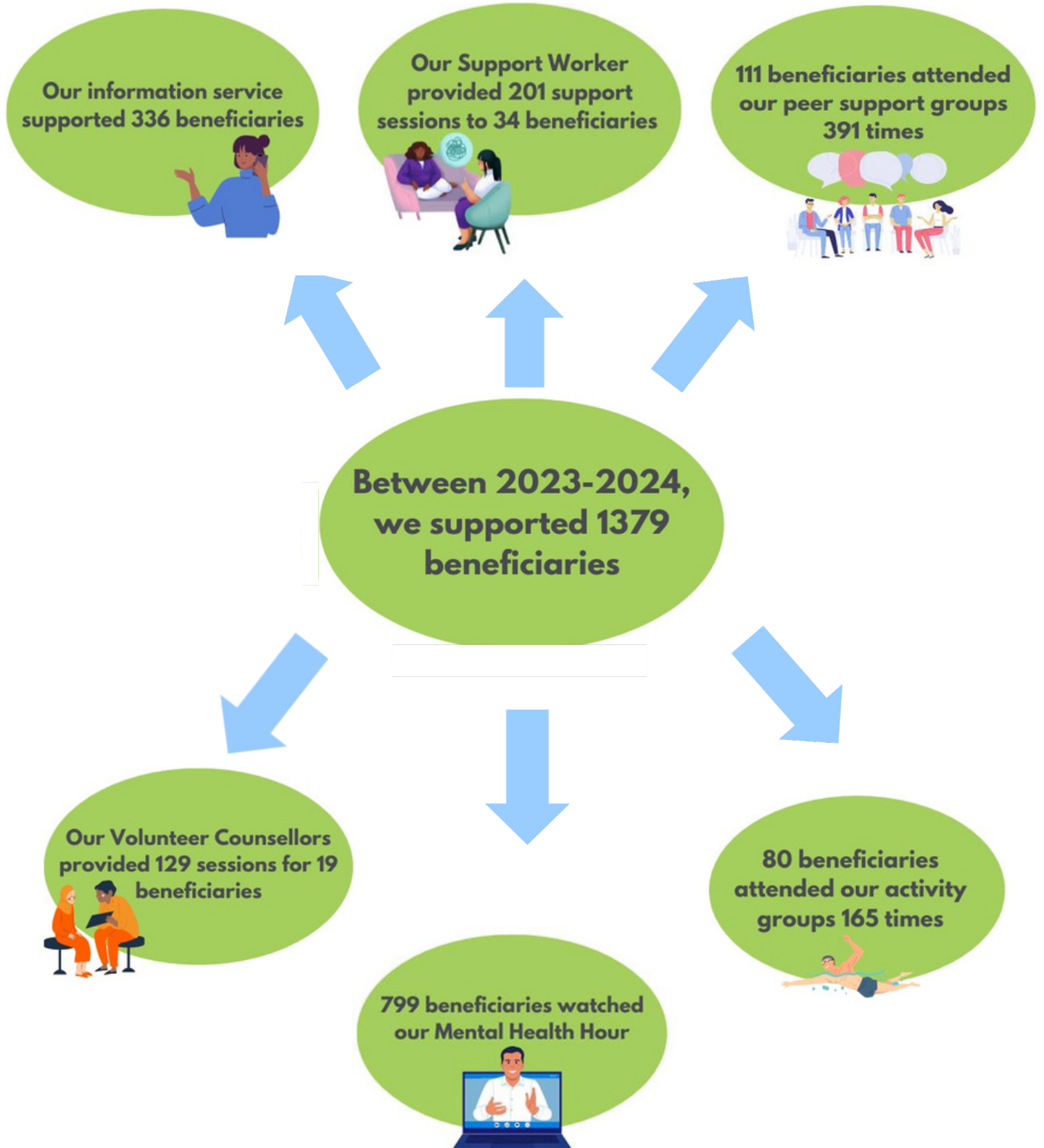


END OF YEAR REPORT 2023-2024

With support from

WITH SUPPORT FROM...





ABOUT LANCASHIRE LGBT

Founded in 2009, we are the pan-Lancashire charity supporting Lesbian, Gay, Bisexual Trans and Q (Questioning or 'Queer') people (LGBTQ+). Our vision is that 'All LGBTQ+ people in Lancashire can be safe and feel a sense of pride and belonging'.



Our aim is for all LGBTQ+ people, their family members and carers to be happier, healthier and better connected. So, our core work focuses on improving mental health and well-being and reducing social isolation.

We are user-led and all of our activities are based on evidence of need.

Our core support activities include:

Information service

- One-to-one support from a dedicated support worker
- Counselling service
- Peer Support groups
- Activity groups
- Workshops promoting well-being and improving mental health
- We also run our Quality Mark 'kite mark' scheme which invites organisations to undertake an audit to measure how LGBTQ+ inclusive they are as service providers and as employers. This is currently under review.

We have a partnership with Leeds and York Partnership NHS Trust Gender Identity Service, hosting their Gender Outreach Workers who give support to people on the waiting list or who are already on the care pathway. They work out of our offices in Preston as part of our team.

We deliver training and are block-booked on an annual basis by Lancashire County Council, Lancaster University Medical School, local Health Trusts and Lancashire Constabulary. We also deliver training to local businesses, GP surgeries, other local charities.

EXECUTIVE SUMMARY



Neil Darby, Chair of Trustees



Dr Lewis Turner, Chief Executive

This annual report details our work supporting the LGBTQ+ community in Lancashire, focusing on improving mental health, reducing social isolation, and fostering a sense of belonging.

This year we welcomed four new Trustees to the Board, with a variety of expertise, backgrounds and experience.

There were 1,379, direct beneficiaries of our support, which is a 16% increase on last year, plus 1,325 training beneficiaries.

The geographical areas of highest engagement were Preston, Blackpool, Lancaster and Blackburn with Darwen.

Key Features and Highlights:

1. Core Services and Activities :

- This year we increased our capacity for our range of support services, including one-on-one support, counselling, peer support groups, activity groups, and workshops.
- We received funding from Comic Relief, the National Lottery Community Fund, and Lancashire and South Cumbria Integrated Care Board to expand our mental health support services and volunteer capacity.

2. Mental Health and Wellbeing Support

- There was a significant increase in demand for mental health support and we were able to increase our capacity to match this.
- 72% of those receiving one-on-one support were dealing with neurological disorders, mental health conditions, or recovering from a mental health crisis.
- Our peer support groups (all are inclusive of gender diverse people), for LBT women, GBT men and trans-masculine people, had high participation and positive impacts on mental health and community belonging.

3. Partnership:

- Our partnership with Leeds and York Partnership NHS Trust Gender Identity Service continued, with two full-time Gender Outreach Workers providing additional support for trans and gender diverse people who are on the waiting list for the Service or on the gender identity care pathway.

4. Impact and Feedback

- High levels of satisfaction were reported by beneficiaries across all services, with improvements in mental health, confidence, self-esteem, and a sense of belonging.

5. Volunteer Contributions:

- We doubled our volunteer capacity, increasing the total number of active volunteers to 8. Volunteers played key roles in facilitating support groups, providing counselling, and supporting events.
- Volunteers reported feeling well-supported and gaining valuable skills through their roles.

6. Raising Awareness :

- We saw an increase in people viewing our series of webinars on LGBTQ+ mental health, which cover diverse topics including the experiences of those with intersectional identities.

7. Training

- Demand increased for our range of training courses, with our most popular course continuing to be Gender Identity Awareness, which is CPD accredited.
- Additionally, commissioned by NHS Lancashire and South Cumbria as part of the Mental Health Transformation project, we delivered a series of impactful training sessions to mental health professionals. These raised awareness about the barriers LGBTQ+ people experience accessing services and being open about their identities. The content of this was informed by our own research with local LGBTQ+ people

and was co-delivered by LGBTQ+ people with lived experience of accessing mental health services.

8. Quality Mark 'kite mark' scheme

- During this period, we began a programme of work to transform our model to a membership scheme with a comprehensive support offer for local organisations to be more LGBTQ+ inclusive, as service providers and as employers.

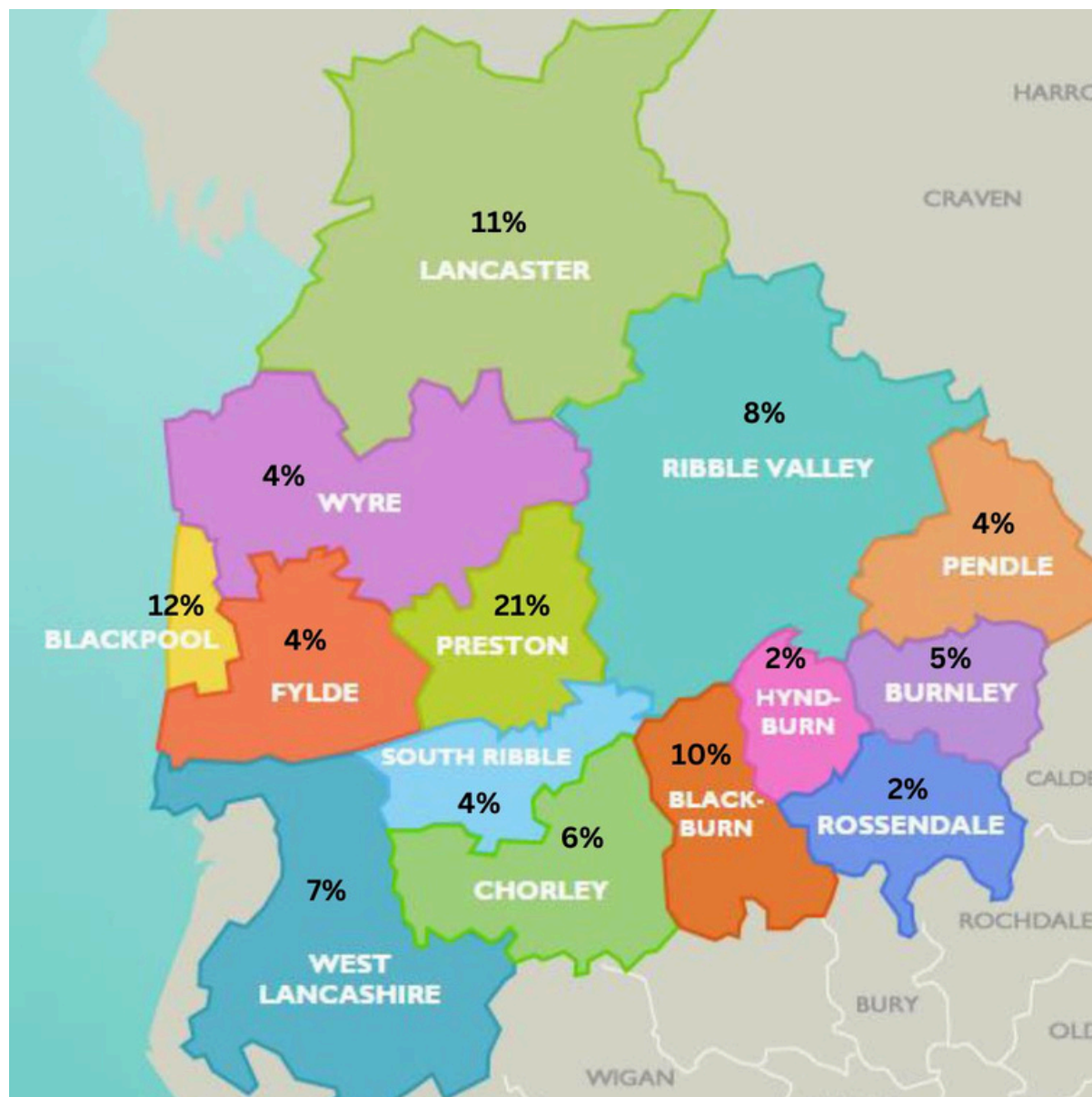
Funding in detail:

- A grant from Comic Relief towards the costs of the one-to-one support service including some funds for capacity development
- A grant from National Lottery Community Fund for a new Programme Coordinator whose role includes volunteer management, to increase our volunteering capacity
- Lancashire and South Cumbria Integrated Care Board:
 - A Grant towards the costs of our Mental Health Support offer
 - Funding for the Mental Health Transformation project delivering LGBTQ+ mental health awareness training to mental health professionals across Lancashire and South Cumbria
- Onward Community Fund contributed to the costs for our walking group.

OVERVIEW OF THE YEAR

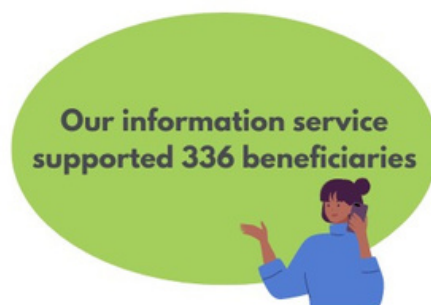
- 336 people contacted our information service
- Our Support Worker provided 201 one-to-one support sessions to 34 people
- Our volunteer counsellors provided 129 counselling sessions for 19 people
- There were 391 attendances to our Peer Support Groups with 111 beneficiaries
- There were 165 attendances to our Activity Groups with 80 beneficiaries
- 799 people watched our unique Mental Health hour webinars on our YouTube channel

LANCASHIRE LGBTQ+ ENGAGEMENT BY LOCAL AUTHORITY
AREA (IN %)- BETWEEN 1 APRIL 2023 – 31 MARCH 2024



ALL ACTIVITIES IN DETAIL

INFORMATION SERVICE: 336 BENEFICIARIES



We have an information service 5 days per week where people can contact us by phone or via an enquiry form on our website.

- 51% of enquiries were from an individual LGBTQ+ person
- 35% were from professional with a general enquiry (usually about equality and inclusion for LGBTQ+ people in an organisation)
- 14% of enquiries were from a professional supporting a LGBTQ+ client

The majority of enquiries from professionals come from those working in the health and education sectors.

MENTAL HEALTH SUPPORT

We have an electronic self-referral form on our website so individuals can refer themselves for support as well a third-party referral form for professionals to refer someone.

116 forms were submitted during this period – with the majority of people seeking mental health support.

ONE-TO-ONE SUPPORT: 201 SESSIONS FOR 34 PEOPLE



During this period, we saw an increased demand for mental health support and were able to increase our capacity with grants from Comic Relief and NHS Lancashire and South Cumbria. The goal of our support sessions is to empower beneficiaries to achieve holistic and sustainable personal growth, happiness, and overall wellbeing. One-to-One Support is delivered by our Support Worker who is a qualified wellbeing coach who uses a range of different skills and techniques that can be tailored to address the diverse support needs of beneficiaries. The support worker guides individuals towards specific goals and desired outcomes that enhance their physical, mental, and emotional health. At the point of contact, service users are measured on their mental well-being, confidence in themselves and how equipped they feel to manage their issues and levels of self-confidence. These factors are then measured after several support sessions over a period of time.

Over the last year, 72% of beneficiaries of our one-to-one support service were either suffering from a neurological disorder, diagnosed with a mental health condition, at crisis point or required support to rebuild their life after a mental health crisis.

IMPACT

- 74% reported an improvement in mental health and well-being
- 76% reported an increase in confidence
- 68% reported an increase in self-esteem:
- 65% reported that they felt better equipped to manage issues

100% of beneficiaries would recommend the support service to other LGBTQ+ people

Feedback:

My support worker was amazing and I feel very lucky to have had his support. He has given me so much confidence and helped me to make the changes I needed to move forward with my life and become the person I want to be at this stage in my life.

Myself and my partner were really impressed with the service that Lancashire LGBT provided. After having some negative experiences with the national health service and a local group, the one-to-one support services were extremely helpful ...I think my sessions have given me a very valuable new perspective on how my mental health intertwines with my LGBT identity and I feel as though my time has built a strong foundation to continue working on being my authentic self.

Keep doing what you do. This is the first time that we have had a positive outcome and moved forward, You run a brilliant service.

With thanks to Comic Relief and NHS Lancashire and South Cumbria for grant funding to make this service possible





During this time, we had 3 volunteer counsellors giving person-centred counselling in 129 counselling sessions for 19 people.

During these sessions, Lancashire LGBT counsellors create a confidential and non-judgmental environment where individuals can openly discuss their trauma, triggers, explore their feelings, and work towards personal growth and improved mental health and wellbeing. Our experienced volunteer counsellors use different therapeutic approaches depending on the beneficiaries needs. Some examples of approaches that are used are Psychodynamic Psychotherapy, Integrative Counselling and Person-centred counselling.

Some of the main themes beneficiaries seek counselling and 1-2-1 support for are self-acceptance, self-confidence, self-esteem, isolation, gender or sexual identity issues, sexual issues, depression and anxiety, abuse, and trauma.

IMPACT

- 58% reported an improvement in mental health and well-being
- 63% reported an increase in confidence
- 79% reported an increase in self-esteem:
- 47% reported that they felt better equipped to manage issues

100% of beneficiaries would recommend the support service to other LGBTQ+ people

Feedback:

I've really appreciated the insights and practical reflections I've gained from [counsellor]. It will have a lasting effect on my ability to live a happy life

I would like to say thank you to [counsellor] and the service for all the support that they gave me through a difficult time

With thanks to National Lottery Community Fund for funding for a full-time Programme Coordinator who recruits, trains and manages our volunteers. This has enabled us to increase the number of our volunteer counsellors.



PEER SUPPORT GROUPS: 391 ATTENDANCES, 111 BENEFICIARIES



Some of our peer support groups alternate online meetings with in-person meetings. We have found that online groups are an opportunity for better inclusion, particularly for people who would not ordinarily attend a peer support group in-person - for example those who have social anxiety and/or mobility problems. It is also an opportunity for people who are geographically dispersed to get together as Lancashire is such a large county.

LBT WOMEN AND NON-BINARY ZOOM GROUP: 191 ATTENDANCES BY 47 PEOPLE,



The online Women's group is run by volunteers and continues to be very popular with regular attendance from across the County.

IMPACT

- 70% said their well-being has improved since attending the group.
- 63% said their sense of belonging and community has improved since attending the group.

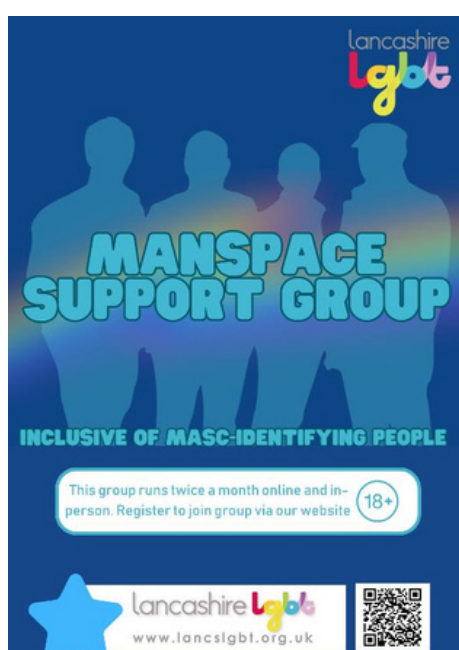
Feedback:

I love Lancashire LGBT and the LBT Group and everything about it. It is a very special community and I

care for it as much as it cares for me.

The host is a consummate professional who knows how to direct a session while keeping the atmosphere friendly and relaxed. If there happens to be any issue the host always knows how to react and you really feel the host has both the knowledge and authority to keep everyone safe. I also think the volunteers are a great addition too that are just extra hands on deck!

'MANSPLACE' GROUP : 134 ATTENDANCES BY 40 PEOPLE



This group meets alternately in person and online and is proving very popular. The online sessions are focused on mental health support and the in-person meetings are a social meet-up.

IMPACT

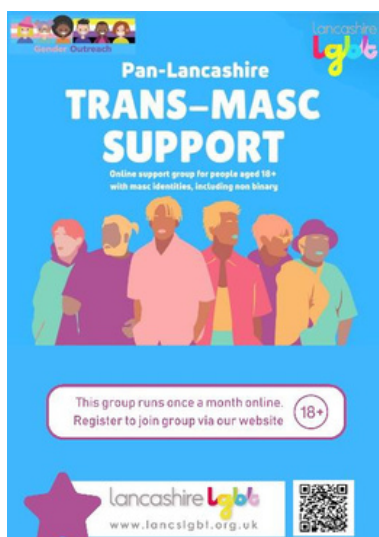
- 51% said their well-being has improved since attending the group.
- 53% said their sense of belonging and community has improved since attending the group.

Feedback:

It's really empowering feeling part of something, being with others you can relate to, it's really helpful being able to learn and feel supported from others.

The online group has been a real source of confidence and personal development/growth. Being able to participate from the comfort of my own home has allowed me to consistently turn up and work with my anxiety in a manageable way. I think the face-to-face meet is fantastic for people who get something out of it, but the online-meet is great for someone like me (autistic) who finds the physicality of commuting, being in an unfamiliar place, etc, too stressful to maintain.

'TRANS-MASC' GROUP: 66 ATTENDANCES BY 24 PEOPLE



This new group is run by volunteers, for people who identify as trans men or trans masculine – and many masculine-identified non-binary people also attend.

IMPACT

- 80% said their well-being has improved since attending the group.
- 60% said their sense of belonging and community has improved since attending the group.

Feedback:

This group has given me confidence that has transferred to my everyday life. I feel more at ease with myself and with people,

and -- although I've not quite got it right yet -- I have started dressing in clothes that feel more affirming and I am just so much braver than I used to be.

The hosts are always welcoming and friendly and it's nice to be able to talk with people who relate to your own struggles.

ACTIVITY GROUPS

**80 beneficiaries
attended our activity
groups 165 times**

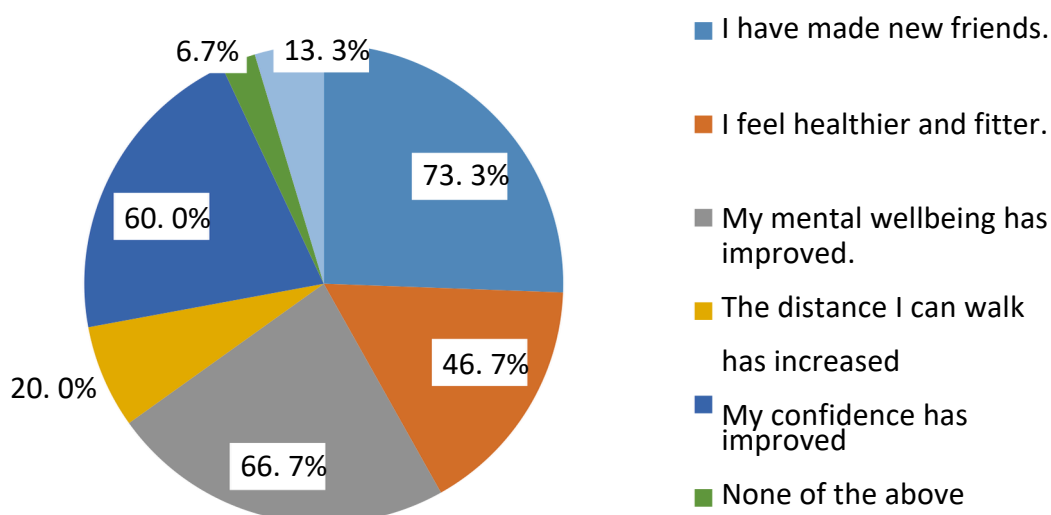


WALKING GROUP: 84 ATTENDANCES BY 48 PEOPLE



The walks are led by our volunteer walk leaders and take place monthly from February to November, allowing walkers to experience the beauty of rural Lancashire and make new friends.

Overall, what benefits have you received from attending the walking group (Tick as many options as you wish).



Feedback:

It's becoming a welcome regular breath of fresh air I live outside Lancashire but visit on a regular basis. I first contacted the group as it seemed a safe environment to meet people enjoying something I have always done before I started to transition. I have found the group friendly, well organised, inclusive and safe place to discuss my own journey and share experiences with others without feeling pressurised to do so. I would encourage the continued support of this group as from my own experience it provides a safe, valuable place to meet other people and develop confidence.

With thanks to Onward Community Fund for the grant to pay for our volunteer walk leaders' expenses

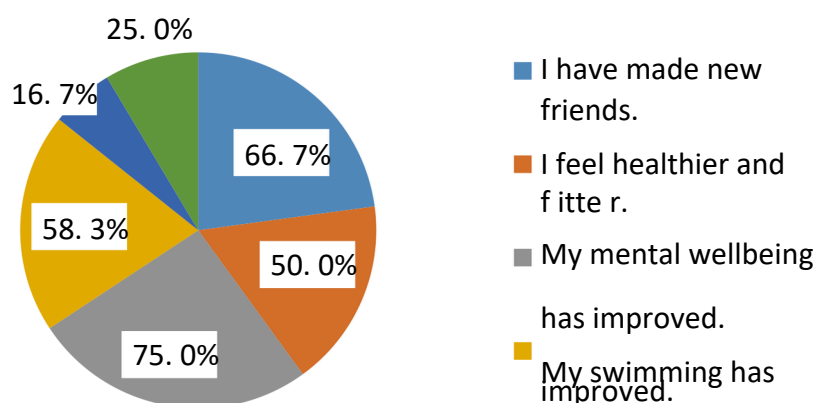
SWIMMING GROUP: 81 ATTENDANCES WITH 32 PEOPLE.



Our LGBTQ+ swimming sessions take place monthly at Moor Park Leisure Centre in Blackpool where we have exclusive use of the pool for an hour. We also have a swimming coach present to help attendees with their technique or even teach them to swim.

IMPACT from feedback survey

Overall, what benefits have you received from attending the swimming group (Tick as many options as you wish).



VOLUNTEERING AT LANCASHIRE LGBT



During this time, we recruited 7 new volunteers, increasing our total number of active volunteers from 4 to 8 (after losing 3 in this period).

Our new team of volunteers have volunteered as:

- co-facilitators for our peer support groups
- volunteer counsellors
- and events volunteers



Active volunteers

- 100% of active volunteers felt very supported by Lancashire LGBT in their role
- 100% of active volunteer co-facilitators and 77% of volunteer counsellors felt they had made a positive contribution to LGBTQ+ wellbeing
- 100% of active volunteer co-

facilitators felt that they had gained facilitator skills and 100% of active volunteer co-facilitators had benefitted from attending the monthly support group for volunteer facilitators

- 100% of active volunteer counsellors felt that they had gained counselling skills and 100% of active volunteer counsellors had benefitted from attending the monthly support group for volunteer counsellors

IMPACT FROM FEEDBACK SURVEY

Feedback:

"I have found the whole process really good, it seems well organised and seems to really value the staff and volunteers"

"I have felt that i have been supported at every step. The communication is prompt and always helpful. I have been offered access to training and the counselling meeting both of which i think are really helpful."

Departing volunteers (volunteers who have departed their roles in this period)

- 100% of departing volunteers felt very supported when volunteering with Lancashire LGBT in their role
- 100% of departing volunteer co-facilitators and 100% of departing volunteer counsellors felt that they had made a positive contribution to LGBTQ+ wellbeing
- 100% of departing volunteer co-facilitators felt that they had gained facilitator skills and 100% of departing volunteer co-facilitators had benefitted from attending the monthly support group for volunteer facilitators
- 100% of departing volunteer counsellors felt that they had gained counselling skills and 100% of departing volunteer counsellors had benefitted from attending the monthly support group for volunteer counsellors

Feedback:

"I always felt very supported by all the team when I was a volunteer . Right through my placement till volunteering I always felt like I could ask for support"

"I couldn't have asked for a great place to do my training and also volunteering at . It is one of the most supportive and friendliest places I have ever worked. I wish we had a lgbtq+ service in my area and I really hope I can return one day"

"I honestly don't have ant suggestions for improvement, as a volunteer for the first time I didn't know what to expect but I found my experience extremely positive and at times uplifting"

With thanks to the National Lottery Community Fund for providing funding for our volunteer manager.



LGBTQ+ MENTAL HEALTH HOUR WEBINARS : 799 VIEWS



We have hosted a series of unique 'LGBTQ+ mental health hour' webinars, raising awareness of maintaining good mental health and wellbeing, which people can watch on our YouTube channel. All webinars have a BSL interpreter. We have covered LGBTQ+ mental health with a diverse range of guests to talk about their experiences of intersectional identities – for example we covered being LGBTQ+ and being Black/Person of Colour or having a Muslim faith or being Disabled or being Trans focusing on mental health and wellbeing. These are very popular.

See <https://lancslgbt.org.uk/mental-health-hour/>

TRANS SUPPORT:

Partnership with Leeds and York Partnership NHS Trust Gender Identity Service

This Partnership continues with two full-time Gender Outreach Workers, Jenny and Bradley, who work as part of our team out of our office giving support to people on the waiting list for the Gender Service or who are already on the care pathway.



They also run their own 'Inclusivity' support groups for trans and gender diverse people



QUALITY MARK –ACHIEVED STATUS: 1

The Lancashire LGBT Quality Mark is our quality assurance programme for service providers. First introduced in 2015, the Quality Mark was developed as an updated version of the former Navajo LGBT Charter Mark. The programme is designed to assist service providers to be inclusive of LGBTQ+ people as service providers as well as employers.

During this period, we have been reviewing the programme including updating the Audit criteria and Guidance.

Runshaw college reached Achieved status during this time



MENTAL HEALTH TRANSFORMATION PROJECT : 5 SESSIONS 72 PEOPLE



We were commissioned by Lancashire and South Cumbria Integrated care board as part of the Mental Health Transformation project to research with LGBTQ+ people locally about their experiences accessing mental health services. We conducted a survey and 2 focus groups and then delivered 5 sessions online and in person which were co-delivered with people with lived experience of accessing mental health services.

The research informed the subsequent training sessions delivered to mental health professionals to reduce mental health inequalities as well as reduce the barriers LGBTQ+ people experience accessing services.

TRAINING SESSIONS – TOTAL 60 SESSIONS; NUMBER OF PEOPLE TRAINED: 1325

The CPD Standards Office

CPD PROVIDER: 21342

2023 - 2024

www.cpdstandards.com



We deliver:

- CPD- accredited Gender Identity Awareness course
- LGBTQ+ sessions which are adapted to be relevant to a sector (for example, health, criminal justice, education).

We are block-booked on an annual basis by:

- Lancashire County Council Adult Social Care to deliver our CPD accredited Gender Identity Awareness sessions
- Lancaster University Medical School to deliver LGBTQ+ awareness sessions to their third-year medical students.
- Lancashire Constabulary for Trans awareness sessions to all new Student Officers

LANCASHIRE AND SOUTH CUMBRIA FOUNDATION TRUST: 14 SESSIONS TO 182 PEOPLE

In addition, this year we were commissioned by Lancashire and South Cumbria Foundation Trust to deliver our CPD accredited Trans/Gender Identity Awareness sessions as well as bespoke LGBTQ+ awareness to staff.



<https://lancslgbt.org.uk>

 www.facebook.com/lancashirelgbt

 www.twitter.com/lancslgbt

 www.instagram.com/lancslgbt/

Registered charity No. 1137578

Lancashire LGBT
Report of the Trustees
for the Year Ended 31 March 2024

FINANCIAL REVIEW

Reserves policy

The balance of unrestricted funds as the year end was £52,754 (2023: £46,743)

The Charity has no permanent endowment and has never been in a position to build up significant long-term reserves. The balance of restricted funds carried forward each year is in accordance with funders' expectations and agreed work plans, and covers scheduled expenditure in the short or medium-term future. The balance of unrestricted funds carried forward is to protect the Charity against becoming vulnerable to any short-term funding-gap. This year the Charity achieved the position where there was an unrestricted reserve able to cover six months' operating expenses, in case of need, and for the purpose of generating investment income.

FUTURE PLANS

Future plans include diversifying income sources to support sustainability. Service development remains consistent with evidence of need collated from past activities as well as consultation with LGBTQ+ people in Lancashire.

STRUCTURE, GOVERNANCE AND MANAGEMENT

Governing document

The charity is controlled by its governing document, a deed of trust and constitutes an unincorporated charity.

The constitution of the organisation was adopted on 14 October 2009.

The Trustees who have served during the year are set out on page 1. The Charity is dependent on the services of a committed number of unpaid volunteers to act as Trustees and to promote its work. Trustees are recruited as far as practicable to reflect the diversity of the people the organisation seeks to serve. Induction training is provided to all Trustees on appointment and periodically thereafter to familiarise them with the work of the Charity and to ensure that they are able to make a constructive contribution to its strategic management. Honorary officers are elected by the Trustees for tenures determined in accordance with the constitution.

The Trustees have examined the major strategic, business and operational risks which the charity faces and have introduced systems to enable regular reports to be produced so that the necessary steps can be taken to lessen the identified risks.

Lancashire LGBT
Report of the Trustees
for the Year Ended 31 March 2024

STRUCTURE, GOVERNANCE AND MANAGEMENT

Key management remuneration

The charity applies salaries to management personnel commensurate with duties that are consistent within the parameters of agreed rates and pay. The charity considers its key management personnel to be the Chief Executive.

REFERENCE AND ADMINISTRATIVE DETAILS

Registered Charity number

1137578

Principal address

Derby House Chambers
Lytham Road
Preston
Lancashire
PR2 8JE

Trustees

I Ashton (resigned 22.9.23)
C McKay (resigned 13.6.23)
B Cumberland
A Cullingford Treasurer
N Darby
P Kellett (appointed 30.11.23)
A Robinson (appointed 30.11.23)
S Taylor (appointed 30.11.23)

Independent Examiner

Paul Ronson FCA
CCW Limited
Chartered Accountants
295/297 Church Street
Blackpool
Lancashire
FY1 3PJ

Approved by order of the board of trustees on 14.12.2024 and signed on its behalf by:



N Darby - Trustee

**Independent Examiner's Report to the Trustees of
Lancashire LGBT**

Independent examiner's report to the trustees of Lancashire LGBT

I report to the charity trustees on my examination of the accounts of Lancashire LGBT (the Trust) for the year ended 31 March 2024.

Responsibilities and basis of report

As the charity trustees of the Trust you are responsible for the preparation of the accounts in accordance with the requirements of the Charities Act 2011 ('the Act').

I report in respect of my examination of the Trust's accounts carried out under Section 145 of the Act and in carrying out my examination I have followed all applicable Directions given by the Charity Commission under Section 145(5)(b) of the Act.

Independent examiner's statement

I have completed my examination. I confirm that no material matters have come to my attention in connection with the examination giving me cause to believe that in any material respect:

1. accounting records were not kept in respect of the Trust as required by Section 130 of the Act; or
2. the accounts do not accord with those records; or
3. the accounts do not comply with the applicable requirements concerning the form and content of accounts set out in the Charities (Accounts and Reports) Regulations 2008 other than any requirement that the accounts give a true and fair view which is not a matter considered as part of an independent examination.

I have no concerns and have come across no other matters in connection with the examination to which attention should be drawn in this report in order to enable a proper understanding of the accounts to be reached.



Paul Ronson FCA

CCW Limited
Chartered Accountants
295/297 Church Street
Blackpool
Lancashire
FY1 3PJ

Date: 2ND Jan 25

Lancashire LGBT

Statement of Financial Activities
for the Year Ended 31 March 2024

	Notes	Unrestricted funds £	Restricted funds £	31.3.24 Total funds £	31.3.23 Total funds £
INCOME AND ENDOWMENTS FROM					
Donations and legacies		995	-	995	1,185
Charitable activities					
Charitable Activities		74,782	90,858	165,640	84,992
Other income		-	-	-	700
Total		<u>75,777</u>	<u>90,858</u>	<u>166,635</u>	<u>86,877</u>
EXPENDITURE ON					
Charitable activities					
Charitable Activities		<u>69,647</u>	<u>55,248</u>	<u>124,895</u>	<u>105,619</u>
NET INCOME/(EXPENDITURE)					
Transfers between funds	6	6,130 <u>(119)</u>	35,610 <u>119</u>	41,740 <u>-</u>	(18,742) <u>-</u>
Net movement in funds		6,011	35,729	41,740	(18,742)
RECONCILIATION OF FUNDS					
Total funds brought forward		46,743	9,185	55,928	74,670
TOTAL FUNDS CARRIED FORWARD		<u>52,754</u>	<u>44,914</u>	<u>97,668</u>	<u>55,928</u>


The notes form part of these financial statements

Lancashire LGBT

Balance Sheet
31 March 2024

	Notes	Unrestricted funds £	Restricted funds £	31.3.24 Total funds £	31.3.23 Total funds £
CURRENT ASSETS					
Cash at bank		56,018	44,913	100,931	58,365
CREDITORS					
Amounts falling due within one year	5	(3,263)	-	(3,263)	(2,437)
NET CURRENT ASSETS		<u>52,755</u>	<u>44,913</u>	<u>97,668</u>	<u>55,928</u>
TOTAL ASSETS LESS CURRENT LIABILITIES		<u>52,755</u>	<u>44,913</u>	<u>97,668</u>	<u>55,928</u>
NET ASSETS		<u>52,755</u>	<u>44,913</u>	<u>97,668</u>	<u>55,928</u>
FUNDS	6				
Unrestricted funds				52,755	46,743
Restricted funds				<u>44,913</u>	<u>9,185</u>
TOTAL FUNDS				<u>97,668</u>	<u>55,928</u>

The financial statements were approved by the Board of Trustees and authorised for issue on 14.12.2024 and were signed on its behalf by:



N Darby - Trustee



A Cullingford - Trustee

The notes form part of these financial statements

Lancashire LGBT

Notes to the Financial Statements **for the Year Ended 31 March 2024**

1. ACCOUNTING POLICIES

Basis of preparing the financial statements

The financial statements of the charity, which is a public benefit entity under FRS 102, have been prepared in accordance with the Charities SORP (FRS 102) 'Accounting and Reporting by Charities: Statement of Recommended Practice applicable to charities preparing their accounts in accordance with the Financial Reporting Standard applicable in the UK and Republic of Ireland (FRS 102) (effective 1 January 2019)', Financial Reporting Standard 102 'The Financial Reporting Standard applicable in the UK and Republic of Ireland' and the Charities Act 2011. The financial statements have been prepared under the historical cost convention.

Income

All income is recognised in the Statement of Financial Activities once the charity has entitlement to the funds, it is probable that the income will be received and the amount can be measured reliably.

Expenditure

Liabilities are recognised as expenditure as soon as there is a legal or constructive obligation committing the charity to that expenditure, it is probable that a transfer of economic benefits will be required in settlement and the amount of the obligation can be measured reliably. Expenditure is accounted for on an accruals basis and has been classified under headings that aggregate all cost related to the category. Where costs cannot be directly attributed to particular headings they have been allocated to activities on a basis consistent with the use of resources.

Taxation

The charity is exempt from tax on its charitable activities.

Fund accounting

Unrestricted funds can be used in accordance with the charitable objectives at the discretion of the trustees.

Restricted funds can only be used for particular restricted purposes within the objects of the charity. Restrictions arise when specified by the donor or when funds are raised for particular restricted purposes.

Further explanation of the nature and purpose of each fund is included in the notes to the financial statements.

Hire purchase and leasing commitments

Rentals paid under operating leases are charged to the Statement of Financial Activities on a straight line basis over the period of the lease.

Pension costs and other post-retirement benefits

The charity operates a defined contribution pension scheme. Contributions payable to the charity's pension scheme are charged to the Statement of Financial Activities in the period to which they relate.

Lancashire LGBT

Notes to the Financial Statements - continued
for the Year Ended 31 March 2024

2. TRUSTEES' REMUNERATION AND BENEFITS

There were no trustees' remuneration or other benefits for the year ended 31 March 2024 nor for the year ended 31 March 2023.

Trustees' expenses

There were no trustees' expenses paid for the year ended 31 March 2024 nor for the year ended 31 March 2023.

3. STAFF COSTS

The average monthly number of employees during the year was as follows:

	31.3.24	31.3.23
Trustees	6	4
Staff	<u>3</u>	<u>4</u>
	<u>9</u>	<u>8</u>

No employees received emoluments in excess of £60,000.

4. COMPARATIVES FOR THE STATEMENT OF FINANCIAL ACTIVITIES

	Unrestricted funds £	Restricted funds £	Total funds £
INCOME AND ENDOWMENTS FROM			
Donations and legacies	1,185	-	1,185
Charitable activities			
Charitable Activities	78,328	6,664	84,992
Other income	<u>700</u>	<u>-</u>	<u>700</u>
Total	<u>80,213</u>	<u>6,664</u>	<u>86,877</u>
EXPENDITURE ON			
Charitable activities			
Charitable Activities	<u>75,517</u>	<u>30,102</u>	<u>105,619</u>
NET INCOME/(EXPENDITURE)	4,696	(23,438)	(18,742)
Transfers between funds	<u>(461)</u>	<u>461</u>	<u>-</u>
Net movement in funds	4,235	(22,977)	(18,742)
RECONCILIATION OF FUNDS			
Total funds brought forward	42,508	32,162	74,670
TOTAL FUNDS CARRIED FORWARD	<u>46,743</u>	<u>9,185</u>	<u>55,928</u>

Lancashire LGBT

Notes to the Financial Statements - continued
for the Year Ended 31 March 2024

5. CREDITORS: AMOUNTS FALLING DUE WITHIN ONE YEAR

	31.3.24	31.3.23
	£	£
Taxation and social security	2,101	1,440
Other creditors	<u>1,162</u>	<u>997</u>
	<u>3,263</u>	<u>2,437</u>

6. MOVEMENT IN FUNDS

	At 1.4.23	Net movement in funds	Transfers between funds	At 31.3.24
	£	£	£	£
Unrestricted funds				
General fund	46,743	6,131	(119)	52,755
Restricted funds				
NL Community Support Fund	-	15,779	471	16,250
Grand Trust	7,362	2,055	473	9,890
Onward Community Fund	323	(238)	27	112
Clothworkers Grant	1,500	-	(1,500)	-
Comic Relief Groundwork	-	2,082	648	2,730
Mental Health Transformation	-	4,524	-	4,524
NHS Grant - Support Worker Role	-	4,869	-	4,869
NHS - ICB Workforce Development	-	6,538	-	6,538
	<u>9,185</u>	<u>35,609</u>	<u>119</u>	<u>44,913</u>
TOTAL FUNDS	<u>55,928</u>	<u>41,740</u>	<u>-</u>	<u>97,668</u>

Net movement in funds, included in the above are as follows:

	Incoming resources	Resources expended	Movement in funds
	£	£	£
Unrestricted funds			
General fund	75,777	(69,646)	6,131
Restricted funds			
NL Community Support Fund	40,478	(24,699)	15,779
Grand Trust	8,031	(5,976)	2,055
Onward Community Fund	-	(238)	(238)
Comic Relief Groundwork	20,442	(18,360)	2,082
Mental Health Transformation	10,500	(5,976)	4,524
NHS Grant - Support Worker Role	4,869	-	4,869
NHS - ICB Workforce Development	6,538	-	6,538
	<u>90,858</u>	<u>(55,249)</u>	<u>35,609</u>
TOTAL FUNDS	<u>166,635</u>	<u>(124,895)</u>	<u>41,740</u>

Lancashire LGBT

Notes to the Financial Statements - continued
for the Year Ended 31 March 2024

6. MOVEMENT IN FUNDS - continued

Comparatives for movement in funds

	At 1.4.22 £	Net movement in funds £	Transfers between funds £	At 31.3.23 £
Unrestricted funds				
General fund	42,508	4,696	(461)	46,743
Restricted funds				
Community Foundation	-	(2,887)	2,887	-
PCN Trust	8,376	(9,228)	852	-
Grand Trust	23,304	(12,528)	(3,414)	7,362
Swimming Group	257	(371)	114	-
Walking Group	225	(247)	22	-
Onward Community Fund	-	323	-	323
Clothworkers Grant	-	1,500	-	1,500
	<u>32,162</u>	<u>(23,438)</u>	<u>461</u>	<u>9,185</u>
TOTAL FUNDS	<u>74,670</u>	<u>(18,742)</u>	<u>-</u>	<u>55,928</u>

Comparative net movement in funds, included in the above are as follows:

	Incoming resources £	Resources expended £	Movement in funds £
Unrestricted funds			
General fund	80,213	(75,517)	4,696
Restricted funds			
Community Foundation	4,814	(7,701)	(2,887)
PCN Trust	-	(9,228)	(9,228)
Grand Trust	-	(12,528)	(12,528)
Swimming Group	-	(371)	(371)
Walking Group	-	(247)	(247)
Onward Community Fund	350	(27)	323
Clothworkers Grant	1,500	-	1,500
	<u>6,664</u>	<u>(30,102)</u>	<u>(23,438)</u>
TOTAL FUNDS	<u>86,877</u>	<u>(105,619)</u>	<u>(18,742)</u>

continued...

Lancashire LGBT

Notes to the Financial Statements - continued
for the Year Ended 31 March 2024

6. MOVEMENT IN FUNDS - continued

A current year 12 months and prior year 12 months combined position is as follows:

	At 1.4.22 £	Net movement in funds £	Transfers between funds £	At 31.3.24 £
Unrestricted funds				
General fund	42,508	10,827	(580)	52,755
Restricted funds				
Community Foundation	-	(2,887)	2,887	-
NL Community Support Fund	-	15,779	471	16,250
PCN Trust	8,376	(9,228)	852	-
Grand Trust	23,304	(10,473)	(2,941)	9,890
Swimming Group	257	(371)	114	-
Walking Group	225	(247)	22	-
Onward Community Fund	-	85	27	112
Clothworkers Grant	-	1,500	(1,500)	-
Comic Relief Groundwork	-	2,082	648	2,730
Mental Health Transformation	-	4,524	-	4,524
NHS Grant - Support Worker Role	-	4,869	-	4,869
NHS - ICB Workforce Development	-	6,538	-	6,538
	<u>32,162</u>	<u>12,171</u>	<u>580</u>	<u>44,913</u>
TOTAL FUNDS	<u>74,670</u>	<u>22,998</u>	<u>-</u>	<u>97,668</u>

Lancashire LGBT

Notes to the Financial Statements - continued
for the Year Ended 31 March 2024

6. MOVEMENT IN FUNDS - continued

A current year 12 months and prior year 12 months combined net movement in funds, included in the above are as follows:

	Incoming resources £	Resources expended £	Movement in funds £
Unrestricted funds			
General fund	155,990	(145,163)	10,827
Restricted funds			
Community Foundation	4,814	(7,701)	(2,887)
NL Community Support Fund	40,478	(24,699)	15,779
PCN Trust	-	(9,228)	(9,228)
Grand Trust	8,031	(18,504)	(10,473)
Swimming Group	-	(371)	(371)
Walking Group	-	(247)	(247)
Onward Community Fund	350	(265)	85
Clothworkers Grant	1,500	-	1,500
Comic Relief Groundwork	20,442	(18,360)	2,082
Mental Health Transformation	10,500	(5,976)	4,524
NHS Grant - Support Worker Role	4,869	-	4,869
NHS - ICB Workforce Development	6,538	-	6,538
	<u>97,522</u>	<u>(85,351)</u>	<u>12,171</u>
TOTAL FUNDS	<u>253,512</u>	<u>(230,514)</u>	<u>22,998</u>

7. RELATED PARTY DISCLOSURES

There were no related party transactions for the year ended 31 March 2024.

Lancashire LGBT

Detailed Statement of Financial Activities
for the Year Ended 31 March 2024

	31.3.24 £	31.3.23 £
INCOME AND ENDOWMENTS		
Donations and legacies		
Donations	995	1,185
Charitable activities		
Grants	142,644	43,407
Training income	<u>22,996</u>	<u>41,585</u>
	165,640	84,992
Other income		
Consultancy	<u>-</u>	<u>700</u>
Total incoming resources	166,635	86,877
EXPENDITURE		
Charitable activities		
Wages	79,425	76,907
Social security	2,516	1,228
Pensions	3,696	3,290
Rent	7,680	7,680
Insurance	843	1,057
Telephone	933	743
Postage and stationery	247	512
Advertising	2,708	2,059
Sundries	919	531
Travel	821	647
Recruitment and training	4,652	1,419
Computer expenses	1,934	2,288
Professional services	2,369	856
Project costs	11,259	1,875
Subscriptions	1,809	2,461
Counselling	<u>2,490</u>	<u>1,490</u>
	124,301	105,043
Support costs		
Governance costs		
Accountancy and legal fees	<u>594</u>	<u>576</u>
Total resources expended	<u>124,895</u>	<u>105,619</u>
Net income/(expenditure)	<u><u>41,740</u></u>	<u><u>(18,742)</u></u>

This page does not form part of the statutory financial statements