



Empowering Women
EVERY SINGLE DAY





*Every single moment carries the weight
of bravery and resilience.*

CHAIR STATEMENT

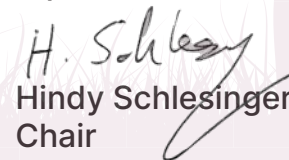
This year, our theme honours the heroic resolve of women who choose empowerment over despair, and embrace hope anew each day. At Lighthouse, we salute these courageous individuals who courageously navigate life's challenges with unwavering determination.

It also represents our enduring pledge to provide steadfast support to women and children confronting the challenges of being a single parent, single breadwinner, single home manager, single caregiver and the courageous paths they tread independently.

This past year, we have achieved significant milestones in enhancing our support services. Our newly introduced welcome package ensures a supportive intake process for new users, offering insights into their specific needs without intrusion. Additionally, our efforts in dating and relationship support have empowered eleven users to achieve independence—a testament to our commitment to comprehensive empowerment.

The global crisis of rising living costs continues to disproportionately affect single parents, constrained by sole incomes and limited work opportunities due to childcare responsibilities. Despite these challenges, we remain steadfast in providing consistent support through warm meals, essential provisions, and food vouchers, while actively pursuing sustainable financial independence.

Together, let us continue to champion gender justice, ensuring that every woman has a voice, every challenge is met with unity, and every step forward brings us closer to a more inclusive and equitable future for all.


Hindy Schlesinger
Chair

The background of the entire page is a stylized illustration of a park. It features large, leafy trees in shades of green and brown. Several birds are shown in flight against a light blue sky. In the foreground, there are silhouettes of people: a person standing on the left, a person sitting on a bench in the center, and a person walking on the right. Two tall, black lampposts with white lanterns stand on either side of the central text area. The overall color palette is soft and naturalistic.

OUR STORY

Lighthouse was founded in April 2010 to support the increasing number of divorced women and their children facing domestic abuse and hardship. Lighthouse aims to re-integrate and reinspire divorced women and their children, through health and parenting courses, vocational training, peer support, social welfare, group counselling, family respite breaks and ongoing family activities. Our aim is for these women to become self-sufficient and go on to build healthy relationships and stability in life. Lighthouse was founded by divorcees themselves, who found themselves in this unfortunate situation, and felt that something must be done to alleviate the stress of such families. Because all trustees and volunteers are from within the community, they fully understand the client needs. We are aware that there is no other organisation that serves our target audience, with their specific cultural and circumstantial need.

OUR VISION

REMOVE WOMEN FROM THEIR STATE OF VULNERABILITY AND TRAUMA TO REACH A PLACE OF SAFETY AND RESILIENCE.

OUR PROMISE

We pledge that any woman who joins Lighthouse will never again feel alone. With a wraparound support system of help in various areas, every issue can be put right.

OUR MISSION

We are committed to providing support, stability and community for single women every day:



WHY LIGHTHOUSE?

THE LIGHTHOUSE ADVANTAGE:

Founded by former divorcees

who know just what our members need and how to best support them

Led by users

to give all members an authentic and empowering experience

Holistic, whole-family approach

because separation affects every member of the family

THE FIVE PILLARS OF SUPPORT

We have identified the five areas where families need support following a breakup:

FRIENDS



FUN FAMILY



FOOD



FUTURE



FRIENDS



In the wake of a family breakup, the need for understanding friends is crucial. Often, close family members may not fully grasp the complexities and challenges that arise. Women and children who have gone through separation need the support of others who have experienced similar situations and can truly empathise. To fulfil this need, Lighthouse provides:

Weekly support groups, offering a safe space for sharing experiences and healing together.

Community-building activities, creating a strong network of support for those navigating similar challenges.

Monthly clubs for children and teens, ensuring every family member can connect with peers who understand their experiences and form lasting relationships.

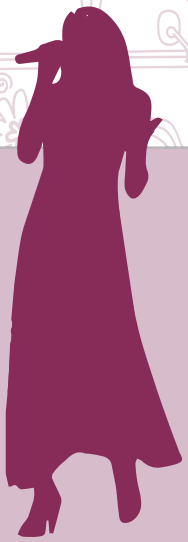
IMPACT:

100% shared feeling significant benefit from peer support.

97% shared reaching out to Lighthouse peers on a regular basis.

Initially hesitant and feeling isolated after a relationship breakup, I was encouraged by a friend to join a painting session. It was a pivotal moment for me, and now I actively engage and thrive within this supportive community. Through this journey, I found empowerment and built meaningful relationships with peers. This newfound validation strengthened my confidence and resilience.





FUN

Single motherhood demands double the effort, encompassing sole childcare responsibilities, domestic duties, a single paycheck, and the absence of an adult companion to share life with. Women living this life need a space to simply be, even if just for a couple of hours, to chat, eat, laugh, and enjoy the moment. To provide this much-needed respite, Lighthouse offers:

Monthly recreational activities such as music, painting, fitness, and crafting, allowing women to unwind and explore their creativity.

Respite trips designed to offer a temporary escape and an opportunity to recharge in a supportive environment


IMPACT

91% shared improved mental wellbeing.

89% shared coming home rejuvenated with renewed energy to go on.

"Balancing everything as a single mother is exhausting—between taking care of my kids, handling all the household chores, and managing our tight budget, I rarely have a moment for myself. Lighthouse has been a game-changer for me. The monthly activities have given me a chance to relax and rediscover my passions. The respite trips have provided a much-needed break, helping me return home feeling refreshed and more capable. I truly value the time and space I get to recharge, and it's made a significant difference in how I approach my daily life."





FOOD



Thank you, Hackney Council, for the Household Support Fund. Your contribution allows us to provide vital food vouchers during the holidays, ensuring families receive essential nourishment and support."

Money is always an issue for single mothers. Being tied down to childcare responsibilities limits the hours they can spend earning money. Single motherhood also costs more. Lighthouse offers:

Food vouchers and warm meals, providing access to nutritious food and alleviating financial pressure.

Toy drives, helping mothers bring joy and comfort to their children.

School supplies, ensuring children have the necessary tools for their education.

Clothing and shoes, supplying families with essential items for everyday life and seasonal changes.

IMPACT:

1820 food parcels, 100s of food vouchers, 840 warm meals delivered.

80% shared less hunger. 76% shared increased access to proper meals.

Nadia, a Yemenite woman living in London with her two daughters, has no family. To manage her limited resources, her family has adopted a vegetarian diet. Living in such poverty that she often relies on charitable distributions for daily sustenance, Nadia struggles to keep food on the table. Our consistent food deliveries and vouchers ensure that she can feed herself and her children.



FAMILY



Creating a happy family environment even within a life where it is hard to identify oneself as a 'family' when it seems that it is no longer. Children from divorced parents need the stability of a home setting and a secure parent to maintain normalcy and routine. To help achieve this, Lighthouse offers:

Family parties, trips, and getaways, providing opportunities for families to connect and build joyful memories together.

Holiday packages, allowing families to enjoy special times together regardless of financial or logistical constraints.

Respite home stays, offering temporary relief and a supportive environment for families in need.

Individual grants for furniture, aiding in the creation of a comfortable and stable home environment for single parents and their children.

IMPACT:

97% shared improved family connection with their children.
92% shared feeling more confident to attend public events.

I was feeling so overwhelmed that I almost called social services to take my children. However, after joining the parenting course, I gained coping strategies that helped me manage my emotions and find guidance in challenging situations.

Mira, mother of two children with ADHD



FUTURE



In 2023, 11 Lighthouse users left the organisation after establishing new healthy relationships

Women who have faced the breakup of their family are determined to build a better future for themselves and their children. Creating this future requires belief, hard work, and dedication to parenting, relationships, trauma recovery, and improving employment prospects. To assist in these endeavours, Lighthouse provides:

Parenting programs, offering tools and support to help women navigate the challenges of raising children on their own.

Relationship counseling and support, helping women heal and build healthy connections.

Employment training and career development, equipping women with the skills and opportunities to enhance their job prospects and financial stability.

Dating workshops, guiding women as they navigate new relationships with confidence and safety.

Individual therapy, providing personalised support for trauma recovery and emotional well-being.

IMPACT:

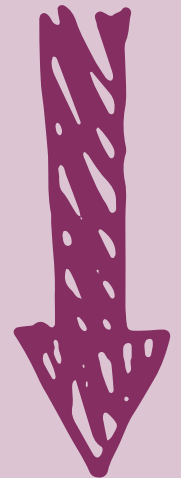
83% shared feeling more positive about their future.
84% shared feeling empowered and confident with their new skills.
89% reported increased emotional resilience,
92% continued on to consistent therapeutic intervention.
91% reported feeling more safe and aware of healthy boundaries.

Before joining the project, I had several inpatient experiences for my mental health issues. Since joining the support group, I haven't required any further inpatient care, showcasing the program's positive impact on my mental health stability. The guidance has empowered me to take control of my life from a level-headed perspective. Instead of reacting explosively, I've learned to make positive changes and handle challenges constructively.



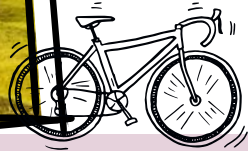


Singling Out
GREAT MOMENTS OF  
TOGETHERNESS



BOURNEMOUTH Family Retreat

bmx
Biking



WOBURN
SAFARI
family trip

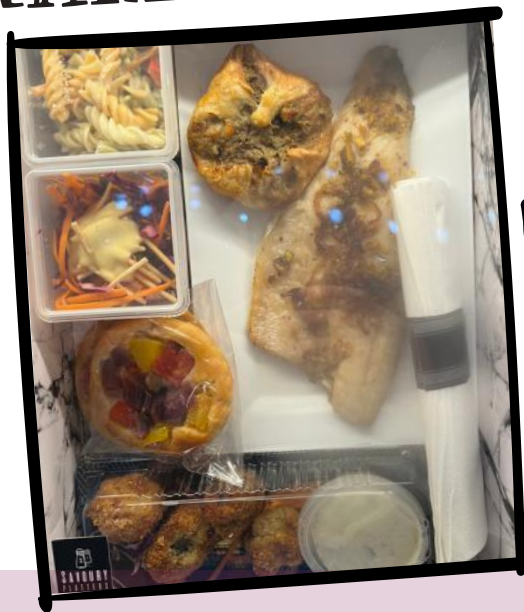


Flower
Arranging

RIVER CRUISE
event for women



WARM MEALS



FLIP OUT



family trip

Pizza Party



Women

overnight retreat



DRUMMING CLUB



BRUSH HOUR

for teens



OUR VISIONS FOR 2024:

UPSKILLING INITIATIVES:

Introducing new educational opportunities and upskilling programs that empower women to thrive in their careers and economic independence.

RECRUITING NEW TRUSTEES:

Strengthening our governance by welcoming diverse and passionate individuals to our board of trustees, who bring fresh perspectives and expertise to guide our strategic initiatives.

EXPAND ADMINISTRATIVE TEAM:

Hiring administrative staff to manage the growing scale of our operations, enabling smoother coordination of services and enhanced support for our users.

UPGRADE DATA SOFTWARE:

Enhancing our data management systems to efficiently log and record information, ensuring accurate tracking of client progress and program outcomes.



"We are proud to partner with Lighthouse through our VAWG Grassroots Fund, funded by MOPAC. Their unique experience of supporting Orthodox Jewish women provides a culturally informed service. Our multi-year partnership is helping to provide women with valuable courses to improve their financial independence. Courses that will continue to strengthen their confidence to transform their lives."

Nimat Jaffer, VAWG Programme Manager for
The London Community Foundation

LIGHTHOUSE - SUPPORTING WOMEN THROUGH STORMY TIMES

Trustees' report For the Year Ended 31 December 2023

The Trustees present their annual report together with the financial statements of Lighthouse - Supporting Women Through Stormy Times for the 1 January 2023 to 31 December 2023.

Objectives and activities

a. Policies and objectives

The objects of the charity are:

- to relieve financial hardship
- to relieve the mental and physical sickness of women undergoing domestic hardship by the provision of counselling and support of such persons
- to advance in life and relieve the needs of young people from single parent families through (a) the provision of recreational and leisure time activities provided in the interest of social welfare, designed to improve their conditions of life; (b) providing support and activities which develop their skills, capacities and capabilities to enable them to participate in society as mature and responsible individuals
- such other purposes as are charitable according English law.

In setting objectives and planning for activities, the Trustees have given due consideration to general guidance published by the Charity Commission relating to public benefit, including the guidance 'Public benefit: running a charity (PB2)'.

Trustees

Hindy Schlesinger

Laurence Freeman (Resigned 13 May 2024)

Ita Cymerman MBE

Yocheved Rechnitzer (Appointed 13 May 2024)

Rifka Reich (Appointed 13 May 2024)

Miriam Rothbart (Appointed 13 May 2024)

Charity registered

number 1135433

Principal office

42 Riverside Road

London

N15 6DA

Accountants

Accshire Accountancy LLP

Independent Examiners

123 Clapton Common

London

E5 9AB

Bankers

Lloyds

Chelmsford Legg St Osc

1 Legg Street

Chelmsford

Essex

CM1 1JS

FINANCIAL REVIEW

a. Going concern

After making appropriate enquiries, the Trustees have a reasonable expectation that the Charity has adequate

resources to continue in operational existence for the foreseeable future. For this reason, they continue to adopt

the going concern basis in preparing the financial statements. Further details regarding the adoption of the

going concern basis can be found in the accounting policies.

b. Reserves policy

The trustees do not seek to maintain reserves, other than to ensure that they can continue the activities of the charity.

Structure, governance and management

a. Constitution

Lighthouse - Supporting Women Through Stormy Times is a registered charity, number 1135433, and is constituted under a Trust deed.

Structure, governance and management (continued)

b. Methods of appointment or election of Trustees

The management of the Charity is the responsibility of the Trustees who are elected and co-opted under the

terms of the Trust deed.

C. Financial risk management

The Trustees have assessed the major risks to which the Charity is exposed, in particular those related to the operations and finances of the Charity, and are satisfied that systems and procedures are in place to mitigate exposure to the major risks.

Statement of Trustees' responsibilities

The Trustees are responsible for preparing the Trustees' report and the financial statements in accordance with applicable law and United Kingdom Accounting Standards (United Kingdom Generally Accepted Accounting Practice).

The law applicable to charities in England & Wales requires the Trustees to prepare financial statements for each financial year which give a true and fair view of the state of affairs of the Charity and of its incoming resources

and application of resources, including its income and expenditure, for that period. In preparing these financial statements, the Trustees are required to:

- select suitable accounting policies and then apply them consistently;
- observe the methods and principles of the Charities SORP (FRS 102);
- make judgments and accounting estimates that are reasonable and prudent;
- state whether applicable UK Accounting Standards (FRS 102) have been followed, subject to any material departures disclosed and explained in the financial statements;
- prepare the financial statements on the going concern basis unless it is inappropriate to presume that the Charity will continue in business.

The Trustees are responsible for keeping adequate accounting records that are sufficient to show and explain the Charity's transactions and disclose with reasonable accuracy at any time the financial position of the Charity and enable them to ensure that the financial statements comply with the Charities Act 2011, the Charity (Accounts and Reports) Regulations 2008 and the provisions of the Trust deed. They are also responsible for safeguarding the assets of the Charity and hence for taking reasonable steps for the prevention and detection of fraud and other irregularities.

Approved by order of the members of the board of Trustees on 17 September 2024 and signed on their behalf

by:



Hindy Schlesinger
(Trustee)

LIGHTHOUSE - SUPPORTING WOMEN THROUGH STORMY TIMES

Independent examiner's report For the Year Ended 31 December 2023

Independent examiner's report to the Trustees of Lighthouse - Supporting Women Through Stormy Times ('the Charity')

I report to the charity Trustees on my examination of the accounts of the Charity for the year ended 31 December 2023.

Responsibilities and basis of report

As the Trustees of the Charity you are responsible for the preparation of the accounts in accordance with the requirements of the Charities Act 2011 ('the 2011 Act').

I report in respect of my examination of the Charity's accounts carried out under section 145 of the 2011 Act and in carrying out my examination I have followed the applicable Directions given by the Charity Commission under section 145(5)(b) of the 2011 Act.

Independent examiner's statement

Since the Charity's gross income exceeded £250,000 your examiner must be a member of a body listed in section 145 of the 2011 Act. I confirm that I am qualified to undertake the examination because I am a member of (enter body here), which is one of the listed bodies.

Your attention is drawn to the fact that the Charity has prepared the accounts in accordance with Accounting and Reporting by Charities: Statement of Recommended Practice applicable to charities preparing their accounts in accordance with the Financial Reporting Standard applicable in the UK and Republic of Ireland (FRS 102) in preference to the Accounting and Reporting by Charities: Statement of Recommended Practice issued on 1 April 2005 which is referred to in the extant regulations but has been withdrawn.

I understand that this has been done in order for the accounts to provide a true and fair view in accordance with the Generally Accepted Accounting Practice effective for reporting periods beginning on or after 1 January 2015.

I have completed my examination. I confirm that no matters have come to my attention in connection with the examination giving me cause to believe that in any material respect:

1. accounting records were not kept in respect of the Charity as required by section 130 of the 2011 Act; or
2. the accounts do not accord with those records; or

3. the accounts do not comply with the applicable requirements concerning the form and content of accounts set out in the Charities (Accounts and Reports) Regulations 2008 other than any requirement that the accounts give a 'true and fair' view which is not a matter considered as part of an independent examination.

I have no concerns and have come across no other matters in connection with the examination to which attention should be drawn in this report in order to enable a proper understanding of the accounts to be reached.

This report is made solely to the Charity's Trustees, as a body, in accordance with Part 4 of the Charities (Accounts and Reports) Regulations 2008. My work has been undertaken so that I might state to the Charity's Trustees those matters I am required to state to them in an Independent examiner's report and for no other purpose. To the fullest extent permitted by law, I do not accept or assume responsibility to anyone other than the Charity and the Charity's Trustees as a body, for my work or for this report.

Signed:

Dated: 17 September 2024

F Lazega FCCA
Accshire Accountancy LLP
123 Clapton Common
London E5 9AB

LIGHTHOUSE - SUPPORTING WOMEN THROUGH STORMY TIMES

Statement of financial activities
For the Year Ended 31 December 2023

	Notes	Restricted funds 2023 £	Unrestricted funds 2023 £	Total funds 2023 £	Total funds 2022 £
Income from:					
Donations and legacies	3	336,693	25,000	361,693	200,389
Total income		336,693	25,000	361,693	200,389
Expenditure on: Charitable activities	5	321,385	5,235	326,620	178,303
Total expenditure		321,385	5,235	326,620	178,303
Net movement in funds		15,308	19,765	35,073	22,086
Reconciliation of funds: Total funds brought forward		59,679	7,805	67,484	45,398
Net movement in funds		15,308	19,765	35,073	22,086
Total funds carried forward		74,987	27,570	102,557	67,484

The Statement of financial activities includes all gains and losses recognised in the year.

The notes on pages 20 to 23 form part of these financial statements.

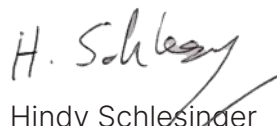
LIGHTHOUSE - SUPPORTING WOMEN THROUGH STORMY TIMES

Balance sheet

As at 31 December 2023

	Note	2023 £	2022 £
Fixed assets		-	-
Current assets			
Cash at bank and in hand		103,637	68,324
		103,637	68,324
Creditors: amounts falling due within one year	9	(1,080)	(840)
Net current assets		102,557	67,484
Total assets less current liabilities		102,557	67,484
Net assets excluding pension asset		102,557	67,484
Total net assets		102,557	67,484
Charity funds			
Restricted funds		74,987	59,679
Unrestricted funds		27,570	7,805
Total funds		102,557	67,484

The financial statements were approved and authorised for issue by the Trustees on 17 September 2024 and signed on their behalf by:


Hindy Schlesinger
(Trustee)

LIGHTHOUSE - SUPPORTING WOMEN THROUGH STORMY TIMES

Notes to the financial statements
For the Year Ended 31 December 2023

1. General information

Lighthouse - Supporting Women Through Stormy Times is a registered charity and is governed by a Trust Deed dated 19 February 2009.

2. Accounting policies

2.1 Basis of preparation of financial statements

The financial statements have been prepared in accordance with the Charities SORP (FRS 102) - Accounting and Reporting by Charities: Statement of Recommended Practice applicable to charities preparing their accounts in accordance with the Financial Reporting Standard applicable in the UK and Republic of Ireland (FRS 102) (effective 1 January 2015), the Financial Reporting Standard applicable in the UK and Republic of Ireland (FRS 102) and the Charities Act 2011.

The financial statements have been prepared to give a 'true and fair' view and have departed from the Charities (Accounts and Reports) Regulations 2008 only to the extent required to provide a 'true and fair' view. This departure has involved following the Charities SORP (FRS 102) published on 16 July 2014 rather than the Accounting and Reporting by Charities: Statement of Recommended Practice effective from 1 April 2005 which has since been withdrawn.

Lighthouse - Supporting Women Through Stormy Times meets the definition of a public benefit entity under FRS 102. Assets and liabilities are initially recognised at historical cost or transaction value unless otherwise stated in the relevant accounting policy.

2.2 Income

All income is recognised once the Charity has entitlement to the income, it is probable that the income will be received and the amount of income receivable can be measured reliably.

2.3 Expenditure

Expenditure is recognised once there is a legal or constructive obligation to transfer economic benefit to a third party, it is probable that a transfer of economic benefits will be required in

settlement and the amount of the obligation can be measured reliably. Expenditure is classified by activity. The costs of each activity are made up of the total of direct costs and shared costs, including support costs involved in undertaking each activity. Direct costs attributable to a single activity are allocated directly to that activity. Shared costs which contribute to more than one activity and support costs which are not attributable to a single activity are apportioned between those activities on a basis consistent with the use of resources. Central staff costs are allocated on the basis of time spent, and depreciation charges allocated on the portion of the asset's use.

Expenditure on charitable activities is incurred on directly undertaking the activities which further the Charity's objectives, as well as any associated support costs. All expenditure is inclusive of irrecoverable VAT.

2.4 Cash at bank and in hand

Cash at bank and in hand includes cash and short-term highly liquid investments with a short maturity of three months or less from the date of acquisition or opening of the deposit or similar account

2.5 Liabilities and provisions

Liabilities are recognised when there is an obligation at the Balance sheet date as a result of a past event, it is probable that a transfer of economic benefit will be required in settlement, and the amount of the settlement can be estimated reliably.

2.6 Fund accounting

General funds are unrestricted funds which are available for use at the discretion of the Trustees in furtherance of the general objectives of the Charity and which have not been designated for other purposes.

Restricted funds are funds which are to be used in accordance with specific restrictions imposed by donors or which have been raised by the Charity for particular purposes. The costs of raising and administering such funds are charged against the specific fund. The aim and use of each restricted fund is set out in the notes to the financial statements.

LIGHTHOUSE - SUPPORTING WOMEN THROUGH STORMY TIMES

Notes to the financial statements
For the Year Ended 31 December 2023

3. Income from donations and legacies

	Restricted funds 2023£	Unrestricted funds 2023£	Total funds 2023£
Grants received	336,693	25,000	361,693

	Restricted funds 2022 £	Unrestricted funds 2022 £	Total funds 2022 £
Grants received	175,389	25,000	200,389

4. Analysis of grants

	Grants to Individuals 2023 £	Total funds 2023 £
Grants	7,709	7,709

	Grants to Individuals 2022 £	Total funds 2022 £
Grants	8,377	8,377

5. Analysis of expenditure on charitable activities

Summary by fund type

	Restricted funds 2023 £	Unrestricted funds 2023 £	Total 2023 £
Charitable activities	313,676	5,235	318,911
Grants to individuals	7,709	-	7,709
	321,385	5,235	326,620

	Restricted funds 2022 £	Unrestricted funds 2022 £	Total 2022 £
Charitable activities	148,746	21,180	169,926
Grants to individuals	8,377	-	8,377
	157,123	21,180	178,303

6. Analysis of expenditure by activities

	Activities undertaken directly 2023 £	Grant funding of activities 2023 £	Support costs 2023 £	Total funds 2023 £
Charitable activities	313,676	-	5,235	318,911
Grants to individuals	-	7,709	-	7,709
	313,676	7,709	5,235	326,620

	Activities undertaken directly 2022 £	Grant funding of activities 2022 £	Support costs 2022 £	Total funds 2022 £
Charitable activities	163,747	-	6,180	169,927
Grants to individuals	-	8,377	-	8,377
	163,747	8,377	6,180	178,303

LIGHTHOUSE - SUPPORTING WOMEN THROUGH STORMY TIMES

Notes to the financial statements
For the Year Ended 31 December 2023

6. Analysis of expenditure by activities (continued)

	Activities 2023 £	Total funds 2023 £
Analysis of direct costs		
Household, clothing and food packages	133,013	133,013
Holiday packages and gifts	6,496	6,496
Warm Meal Project	18,820	18,820
Delivery	2,104	2,104
Respite and trips	25,204	25,204
Respite home	36,933	36,933
Women's support groups	19,604	19,604
Children's support groups	12,480	12,480
Family programmes and events	29,190	29,190
Therapy services	29,832	29,832
	313,676	313,676
	Activities 2022 £	Total funds 2022 £
Household, clothing and food packages	69,230	69,230
Holiday packages and gifts	9,146	9,146
Respite and trips	37,343	37,343
Respite home	33,110	33,110
Women's support groups	6,288	6,288
Children's support groups	3,161	3,161
Family programmes and events	4,179	4,179
Therapy services	1,290	1,290
	163,747	163,747

6. Analysis of expenditure by activities (continued) Analysis of support costs

	Activities 2023 £	Total funds 2023 £
Office costs	1,411	1,411
Printing and publication	1,223	1,223
Insurance	574	574
Governance costs	2,027	2,027
	5,235	5,235

	Activities 2022 £	Total funds 2022 £
Insurance	574	574
Website	4,128	4,128
Governance costs	1,478	1,478
	6,180	6,180

7. Independent examiner's remuneration

	2023 £	2022 £
Fees payable to the Charity's independent examiner for the independent examination of the Charity's annual accounts	480	360
Fees payable to the Charity's independent examiner in respect of:		
All other services not included above	600	480

8. Trustees' remuneration and expenses

During the year, no Trustees received any remuneration or other benefits (2022 - £NIL).

During the year ended 31 December 2023, no Trustee expenses have been incurred (2022 - £NIL).

LIGHTHOUSE - SUPPORTING WOMEN THROUGH STORMY TIMES

Notes to the financial statements
For the Year Ended 31 December 2023

9. Creditors: Amounts falling due within one year

	2023 £	2022 £
Accruals and deferred income	1,080	840

10. Summary of funds

Summary of funds - current year

	Balance at 1 January 2023 £	Income £	Expenditure £	Balance at 31 December 2023 £
General funds	7,805	25,000	(5,235)	27,570
Restricted funds	59,679	336,693	(321,385)	74,987
	67,484	361,693	(326,620)	102,557

	Balance at 1 January 2022 £	Income £	Expenditure £	Balance at 31 December 2022 £
General funds	3,984	25,000	(21,180)	7,804
Restricted funds	41,414	175,389	(157,123)	59,680
	45,398	200,389	(178,303)	67,484