

# THE PAROCHIAL CHURCH COUNCIL OF THE ECCLESIASTICAL PARISH OF ST. PAUL'S, HOOTON

England & Wales · Charity number 1134654

## Details

---

**Other names** ST PAUL'S PCC

**Status** Registered

**Legal form** Previously excepted

**Registered** 2010-03-04

**Register** [View on the Charity Commission register](#)

## Contact

---

**Address** Hooton Vicarage  
Chester Road  
Childer Thornton  
Ellesmere Port  
CH66 1QF

**Phone** 01513392020

**Email** [hootonvicar@gmail.com](mailto:hootonvicar@gmail.com)

**Website** <https://www.stpaulshooton.org.uk/>

## Activities

---

**Objects:** Promoting in the ecclesiastical parish the whole mission of the Church.

**Activities:** Religious activities

## Classification

---

- **How:** Provides Buildings/facilities/open Space, Provides Services
- **What:** Religious Activities
- **Who:** The General Public/mankind

## Geography

- **Area of benefit:** UNDEFINED. IN PRACTICE, LOCAL.
- Cheshire West & Chester

## Finances

Period end	Income	Expenditure	Assets	Employees
2024-12-31	£127,671	£108,390	-	-
2023-12-31	£130,114	£140,155	-	-
2022-12-31	£104,179	£118,807	-	-
2021-12-31	£98,199	£113,770	-	-
2020-12-31	£75,831	£99,186	-	-

## Trustees

Name	Role	Appointed
<b>ALEXANDRA LUCILLE DUFFEY</b>	Chair	2017-04-25
Beryl Tidbury		2025-04-27
David McCormick		2024-04-13
<b>JANE CATHERINE SHEEHY</b>		2017-04-25
Jeanette Muriel Cain		2024-04-13
Joanne Helen Byrne		2022-04-27
Joy Edge		2025-04-27
<b>LYNNE JEAN BERGIN</b>		2015-04-20
<b>MR M HOLMES</b>		
<b>MRS G WALE</b>		
Nicholas John Revill		2023-04-13
Rev Joanna Lesley Pemberton		2025-04-27
Richard Thomas Soper		2022-04-27
Sarah Jane Wood		2016-04-18
Sarah-Jane Turner		2023-04-13
<b>WENDY HOLMES</b>		2015-04-20



**THE PAROCHIAL CHURCH COUNCIL OF THE ECCLESIASTICAL PARISH OF ST. PAUL'S, HOOTON**

England & Wales - Charity number 1134654

---

# Accounts

---

PAROCHIAL CHURCH COUNCIL OF ST PAUL'S, HOOTON  
ANNUAL REPORT (continued)  
For the year ended 31 December 2024

## ADMINISTRATIVE INFORMATION

St. Paul's is situated on Chester Road in Little Sutton, a village eight miles from Chester. The ecclesiastical parish is made up of three communities of Hooton, Childer Thornton and Little Sutton. The correspondence address for the parish is Hooton Vicarage, Chester Road, Little Sutton, CH66 1QF. The Parochial Church Council (PCC) is a body of corporate (POCC Powers Measure 1956, Church Representation Rules 2022) and a charity registered with the Charity Commission. Registered Charity no. 1134654

## STRUCTURE, GOVERNANCE AND MANAGEMENT

Our ACM was held in April following Church and Government guidelines. Two nominations were received for the two positions of Church Wardens and they were elected unanimously to continue as Churchwardens for another year.

PCC members are appointed in accordance with the Church Representation Rules. Membership consists of ex-officio members (as listed above) and members elected by those names are on the Electoral Roll or live in the Parish. All those who attend our services – and are members of the congregation – are encouraged to register on the Electoral Roll and stand for election to the PCC.

There were three vacancies on the PCC at the time of the ACM. All were elected unanimously at the meeting.

We have three Deanery Synod Representatives and at the time of the AGM there was one vacancy, which remains, however the other two posts were re-elected.

The PCC met eleven times in the year. The average attendance was 75%. All the meetings in 2024 were chaired by the Parish priest Father Mark. The Standing Committee met once in 2024 (under Church Representatives Rules 2011 M31/6). PCC members are responsible for discussing and making decision on all matters of concern and importance to the Parish which includes finance, maintenance of fabric of the church and grounds and social activities held by the church.

This year the PCC continued to be split into working groups with the following names and remit:

**Estates** – to identify as much maintenance of the fabric needed on the church estate and complete. To develop the assisting buildings and modernise the church hall.

**Events** – to plan social events throughout the year with the aim to develop community and increase income.

**Finance** – to review our financial situation. Seeking to wisely minimise outgoings and increase income, whilst remaining missional. Looking at budgets for mission, buildings, charitable giving etc? like any family that feels the pinch, we have needed to look at out spending and budget fairly to achieve our aims. Applying for and achieving grants to continue our mission work within the community.

**Worship** - to ensure that the current worship at St. Paul's is practically within our skill set, working at its best to develop community and how the community worships Almighty God. This group work on the liturgy in church, what our diet of worship looks like, ensuring we are creative at Easter, Christmas, Ascension, Pentecost, Epiphany, Lent and Advent. This group have worked hard to create, develop and lead family and café church services over the last year.

**Forward thinking** – this is a group who have been leading us in discerning God's will for this parish. It has and will continue to look forward to the future, ensuring we are following and achieving our overarching aims and objectives. How we moved forward, making this a centre/place for worship, learning, services, family and community.

PAROCHIAL CHURCH COUNCIL OF ST PAUL'S, HOOTON  
ANNUAL REPORT (continued)  
For the year ended 31 December 2024

## AIMS AND OBJECTIVES

The Parochial Church Council (PCC) works with the vicar to promote the mission of the church in the local context. This work is pastoral, evangelistic, social and ecumenical in nature. We endeavour to communicate our faith and values through words and action, in the creation of a caring Christian community that is outward thinking. As well as providing services to our community in a variety of situations, we provide the church hall for various social needs and aspirations.

## ACHIEVEMENTS AND PERFORMANCE

The PCC is committed to enabling as many people as possible to worship at our Church, and to become part of our parish family. When planning our activities, certain members of the PCC have considered the Charity's Commission's guidance on public benefit, and in particular the specific guidance on charities for the advancement of religion. Our services and worship put faith into practice through prayer and scripture, music and sacrament. We try to enable ordinary people to live out their faith as part of our parish family, through

- Worship and prayer; learning about the Gospel and developing their knowledge and trust in Jesus.
- Provision of pastoral care for people living in the parish.
- Mission and outreach work.

To facilitate this work, it is vital that we maintain the fabric of the building and develop/modernise the church hall.

At St. Paul's we are a community of many layers that come together to worship God and serve those around us. We aim to welcome everyone and have developed and continue to extend our sense of inclusivity. We hear God calling those in the margins locally, to be the centre of His church. We hear God calling back those who have once left church behind and church has left them behind.

The statistics show that St Paul's Electoral Roll is up from 226 at the end of 2023 to 240 in 2024.

There were 49 baptisms (up from 42 in 2023) and 8 weddings (up from 3 in 2023).

174 adults and children attended Easter (up from 168 in 2023) and 428 (up from 294 in 2023) attended Christmas

24 funerals were held in church, 9 at crematorium and there was a total of 25 committals only or burial of ashes (total of 58 in 2024 compared to 69 in 2023). Memorial services to remember those who has died were held in November continuing our fantastic relation with two Funeral Directors to conduct memorial services for their clients. One service there was no seats left in church and the other service had in excess of 76 people attending.

### ***Ministry highlights for 2024:***

- Oratory Chapel in the Parish Hall has been created and is used regularly for Wednesday Communion services, prayer group meetings and spiritual wellbeing. This chapel has given St. Paul's and the community another spiritual place for prayer, reflection and time with God.
- Freshen and modernisation of the Parish Hall. Spaces have now been identified within the hall to ensure the space within the hall is utilised to its greatest potential. Volunteers have re-painted the Hall, new black-out blinds and curtains have been purchased, noticeboards re-purposed and updated and further plans to update doors, radiators and install disco lights in the main hall to attract further usage on weekends for parties. The hall is used everyday throughout the week by various groups and available for hire on the weekend. There are opportunities to book either the small hall, the large hall or the whole building depending on the need.
- Introduction of Holy Week activities and **food in**
- Women's Fellowship continues to thrive at St. Paul's with monthly meetings taking place with regular speakers.
- Men's breakfast continues to grow and is under new management with the introduction of monthly speakers
- The church continues to be open during the week between the hours of 08:00 and 16:00 for prayer, quiet time and reflection. Due to its continued popularity, church is also open at the weekends.
- The votive stand continues to direct people to prayer and candles at lit for loved ones on a daily basis.
- The main achievement for 2024 is our mission to reduce social isolation and loneliness with the introduction of the Warm Huib/Public Living Room in the church hall. Ran by amazing volunteers, numbers are increasing week on week, and this was started by a small grant from the Duchess of Westminster Fund. Further grants have been applied for its continued sustainability. The second achievement continues to be our sense of inclusion with the parish welcoming everyone, with the privilege to ask God's blessing upon a same-sex couple who were earlier married.

# PAROCHIAL CHURCH COUNCIL OF ST PAUL'S, HOOTON

## ANNUAL REPORT (continued)

For the year ended 31 December 2024

### WORSHIP

Over the last year we have continued with what our diet of worship looks like and their collective range. We continue to assess our services on a regular basis; our like and dislikes, strengths and areas for development. I think you'll agree our refreshed diet of worship is refreshing and spiritually engaging here at St. Paul's. Services are:

- **1<sup>st</sup> Eucharist with Sunday Club** – Sunday Eucharist service with Sunday club in Church Hall
- **2<sup>nd</sup> Family Eucharist** – Family service including Sunday club in church led by the children, including carrying the p[re]cessional cross, candles, reading and leading intercessions and assisting to distribute the communion elements. Talks are given by a variety of people, lay and ordained. A more informal service.
- **3<sup>rd</sup> Eucharist with Sunday Club** - Sunday Eucharist service with Sunday club in Church Hall
- **4<sup>th</sup> Café Church with Sunday Club** – non-eucharistic service replacing the Service of the Word. Takes place in the large hall in the church centre with tea, coffee, croissants, muffins etc. It's a form of parish breakfast. We have hymns, readings, a talk, prayers and some open discussion on tables. This service is well attended.
- **5<sup>th</sup> Eucharist with prayers for healing** – Sunday Eucharist service with Sunday Club in Church Hall. This service offers tow people offering prayers of healing.

As well as these monthly services, we continue to hold annual Pet Blessing Service (27 Human souls), Dawn Service on Easter day (15 Souls), Holy week evening activities, reflections and services.

### CHURCH HALL USAGE

Opening the doors of St Paul's Church Hall to the community has been one of the most fruitful decision both pastorally, community wide and financial we have made in 2024.

Fr Mark

### WORKS, MAINTAINENCE AND HEALTH AND SAFETY

Mark Holmes

### PASTORAL CARE

Rev Jo

### COMMUNICATION

Fr Mark

We have a substantial following on Facebook, this is where our events are advertised. A few of our articles on here have been shared by other users including the Diocese of Chester. The church now has a website presence and a good following.

### INITIATION AND NURTURE

?? candidates were prepared and presented by the Vicar for Confirmation by the Bishop of Birkenhead/Chester. All ?? are regular communicants at St Pauls post confirmation?

### ORDINATION PLACEMENTS

Fr Mark

### MAGAZINE

Ben and Sam took over the Church Magazine in December 2023 and with Fr Mark's approval, it was renamed as 'Under the Dome', a name it previously had during the 1950s/1960s era. Ten issues were produced in 2024. Since taking over the magazine, we have had lots of positive comments. A great number of parishioners have contributed many interesting articles, recipes and photographs – we are extremely indebted to them.

The number of copies printed are approximately 130 each month but we understand that the readership is much greater as copies are forwarded to friends.

Going forward, aided by Rev. Jo, we are hoping to encourage local businesses to advertise in the magazine, which will increase the revenue. This will not only cover production costs but ultimately bring in profit for Church funds.

### BIBLE STUDY

Fr Mark

### PRAYER GROUP

PAROCHIAL CHURCH COUNCIL OF ST PAUL'S, HOOTON  
ANNUAL REPORT (continued)  
For the year ended 31 December 2024

Fr Mark

**LENT COURSE**

Fr Mark

**CHOIR**

Gill

**SCHOOL CONNECTIONS**

We have five primary schools in the parish off which three Fr. Mark attended a monthly assembly and one for collective act of worship. Fr Mark is also governor of the latter school.

Gwen

**SUNDAY CLUB**

Gwen

**SOCIAL EVENTS**

Alex

**SUMMER FAYRE**

Alex

**CHRISTMAS FAYRE**

Alex

**WOMENS FELLOWSHIP**

Viv

**MENS BREAKFAST**

Mark Holmes

**GOOD TO TALK**

Gwen

**WARM HUB/PUBLIC LIVING ROOM**

Following the removal of the heating allowance for pensioners, Father Mark and Sarah were determined to provide somewhere warm for the community and asked for volunteers to support this outreach mission work. An initial £1,000 grant was received from the Anne Duchess of Westminster Fund and was match-funded by an anonymous donor. Generous donations of tea, coffee and biscuits were received from local councilors and Morrisons.

During the planning stages, it was decided to hold at least two sessions during the week. A morning, and an afternoon. After much persuasion by Sarah, and a promise not to buy any more furniture for the vicarage, Fr Mark accompanied her to IKEA for accessories for the hub. We suspect that the promise of meatballs and ice cream was included as an incentive! Throws, cushions, books, games etc. were also donated.

Numbers have grown steadily. Wednesday morning has a higher attendance, often with 30 people arriving. Monday has a core group of about 16 which is growing to include members of the community who are not part of the congregation. These include carers and those they care for and some who find themselves living in temporary accommodation.

Four dedicated volunteers, Gwen, Beryl, Jeanette and Viv; two each 'session' thoroughly enjoy themselves and derive great pleasure facilitating this asset. Fr Mark renamed it a 'Public Living Room' and was delighted to see it develop. A further grant which he applied for has been agreed to for the sum of £2,000 from The Allen Lane Foundation. Sadly, this became known to us after he passed. We will now be able to extend this facility throughout the year as Fr Mark would have wished. He would have been delighted

*"Friendship, warmth, companionship, squirrel display, tea, coffee, cakes, biscuits, looked after well, amazing, I love it"*.  
These are some of the words we have heard and have been written in the comments book.

PAROCHIAL CHURCH COUNCIL OF ST PAUL'S, HOOTON  
ANNUAL REPORT (continued)  
For the year ended 31 December 2024

**WORLD DAY OF PRAYER**

Gwen

**DEANERY SYNOD**

At present St Paul's Hooton has 3 lay members Richard & Sarah and 2 vacancies due to the numbers on our electoral roll. We welcome any volunteers who wish to represent St Paul's at Deanery Synod. We usually have 3 meetings each year one for each academic term.

The Spring meeting was held at where the speaker was Debbie Wilkinson, Mission Lead for Wirral Waters who described for work and reflected on what can be learned about introducing new approaches to parishes, especially when you have new large-scale developments alongside existing congregations. In April we were invited to attend the commissioning service for our new Rural Dean Rev Vicky Barratt at her home parish All Saints Church, Thornton Hough. The Summer meeting was attending the Induction Service of Rev. Rachel Newell the new Rector of St Thomas & All Saints Church, Ellesmere Port with St Lawrence Stoak. In October we were invited to attend a training day run by Dementia Friends Information Session at the Parish Centre on Eastham Rake. The Autumn meeting was a Deanery Synod Hymns of Praise at all Saints Church Thornton Hough which was an open meeting and thoroughly enjoyed by all those who attended.

**ECUMENICAL PARTICIPIATION**

2024 saw continued growth after firm foundations had been set in 2023 with our ecumenical brothers and sisters. On March 1<sup>st</sup> 2024, we attended the World Day of Prayer which was hosted by?? Close relationship with the Roman Catholic priest

**SAFEGUARDING**

Gwen

Safeguarding is at the forefront of your PCC. We are committed to follow the House of Bishops guidance on safeguarding. We have ensured that all leaders in this church have or are working on the correct safeguarding training courses. That all those who need a DBS check has been. We have an up to date and new safeguarding policy, which is renewed by the PCC yearly. Safeguarding is also a standing item on each PCC agenda. Gwen Wale is your Parish Safeguarding Officer.

**OCCASIONAL OFFICERS**

We now conduct baptisms using the font again. Baptism are interactive, child centred, light - hearted. St Pauls is getting more repeat business, with some 48 baptisms in 2023. Whilst weddings remain low for 2023, there are 12 books for 2024 and 2025

**DUKE OF EDINBURGH VOLUNTEERS**

Fr Mark

**WORK EXPERIENCE**

St. Pauls Parish Office was able to offer a young gentleman on his school work experience in July for a week. This young gentlemen who attends South Wirral high School, was given a taster of the experience what life was like working as a full time vicar in a busy parish, participating in meetings, services, pastoral visits and how the busy parish office works. He was a joy to have in the parish for the week and did himself and his school proud.

**GARDENING**

Rev Jo

**FINANCIAL REPORT 2024**

Sarah

St Paul

Analysis of Receipts and Payments  
Selected period: 01 January 2024 to 31 December 2024

	General	Designated	Restricted	Total	
				This year	Last year
<b>Receipts</b>					
<b>Donations and legacies</b>					
0101 - Gift Aid - Bank	20,274.50	-	-	20,274.50	-
0110 - Gift Aid - Envelopes	11,757.01	-	-	11,757.01	-
0201 - Other planned giving	2,469.26	-	-	2,469.26	-
0301 - Loose plate collections	8,120.33	-	-	8,120.33	-
0302 - Loose Plate Baptism	1,032.00	-	-	1,032.00	-
0410 - Giving through church boxes	823.46	-	-	823.46	-
0501 - One-off Gift Aid gifts	964.00	-	-	964.00	-
0550 - Donations appeals etc	5,667.35	-	1,895.00	7,562.35	-
0601 - Tax recoverable on Gift Aid	9,622.69	-	-	9,622.69	-
0701 - Legacies	300.00	-	-	300.00	-
0801 - Recurring grants	11,055.40	-	-	11,055.40	-
08A1 - Non-recurring one-off grants	1,000.00	-	464.02	1,464.02	-
0901 - Other funds generated	12,282.38	-	370.00	12,652.38	-
0902 - Open Church Donations	639.00	-	-	639.00	-
0903 - Car Boot	472.00	-	-	472.00	-
0904 - Church Yard Giving	5.00	-	600.00	605.00	-
0911 - Events - Community ( eg fairs )	2,060.70	-	-	2,060.70	-
<b>Donations and legacies Totals</b>	<b>88,545.08</b>	<b>-</b>	<b>3,329.02</b>	<b>91,874.10</b>	<b>-</b>
<b>Income from charitable activities</b>					
0910 - Events - Social	241.75	-	-	241.75	-
1101 - Fees for weddings and funerals	11,432.00	-	-	11,432.00	-
1102 - Wedding & Funeral Mileage	310.67	-	-	310.67	-
1103 - Wedding & Funerals - Verger	790.00	-	-	790.00	-
1104 - Weddings & Funerals - Organist	1,320.00	-	-	1,320.00	-
1105 - Wedding & Funeral - Heating	525.00	-	-	525.00	-
1106 - Wedding & Funeral - CD Copyright	500.00	-	-	500.00	-
1107 - Wedding & Funerals Stonemason	933.00	-	-	933.00	-
1108 - Fallon nameplate	468.00	-	-	468.00	-
1109 - FUNERAL GRAVE DIG	65.00	-	-	65.00	-
1110 - WEDDING & FUNERALS VIDEO	100.00	-	-	100.00	-
1111 - Wedding & Funerals Bells	40.00	-	-	40.00	-
1230 - Church hall lettings - objectives	1,021.00	-	-	1,021.00	-
<b>Income from charitable activities Totals</b>	<b>17,746.42</b>	<b>-</b>	<b>-</b>	<b>17,746.42</b>	<b>-</b>
<b>Other trading activities</b>					
1240 - Church hall lettings - fund raising	13,456.62	-	-	13,456.62	-
1260 - Parish magazine sales	970.64	-	-	970.64	-
1270 - 100 Club	2,333.00	-	-	2,333.00	-
<b>Other trading activities Totals</b>	<b>16,760.26</b>	<b>-</b>	<b>-</b>	<b>16,760.26</b>	<b>-</b>
<b>Investments</b>					

	General	Designated	Restricted	Total	
				This year	Last year
1020 - Bank and building society interest	1,291.35	-	-	1,291.35	-
<b>Investments Totals</b>	<b>1,291.35</b>	-	-	<b>1,291.35</b>	-
<b>Receipts Grand Totals</b>	<b>124,343.11</b>	-	<b>3,329.02</b>	<b>127,672.13</b>	-

## Payments

### Raising funds

1701 - Fees paid to fund raisers	204.94	-	-	204.94	-
1720 - Costs of stewardship campaign	232.98	-	-	232.98	-
1725 - Cost of Digital Giving	44.46	-	-	44.46	-
<b>Raising funds Totals</b>	<b>482.38</b>	-	-	<b>482.38</b>	-

### Expenditure on charitable activities

1850 - Home mission	80.00	-	-	80.00	-
1910 - Ministry parish share etc	32,423.50	-	-	32,423.50	-
2001 - Assistant staff costs	40.00	-	-	40.00	-
2050 - Salary of parish administrator	6,019.35	-	-	6,019.35	-
2051 - Salary - Incumbent PA	1,218.00	-	9,705.66	10,923.66	-
2052 - Salary - Verger	350.00	-	-	350.00	-
2053 - Salary - Grave Digger	2,552.00	-	-	2,552.00	-
2060 - NI Costs parish administrator	231.68	-	-	231.68	-
2061 - NI - Incumbent PA	-	-	436.80	436.80	-
2063 - NI - Grave Digger	198.16	-	-	198.16	-
2101 - Working expenses of incumbent	2,484.10	-	-	2,484.10	-
2120 - Council tax	2,727.54	-	-	2,727.54	-
2130 - Parsonage house expenses	747.73	-	-	747.73	-
2140 - Water rates - vicarage	1,659.45	-	-	1,659.45	-
2170 - Education	34.32	-	-	34.32	-
2202 - Fallon nameplate	163.12	-	-	163.12	-
2310 - Church office - telephone	1,307.97	-	-	1,307.97	-
2320 - Organ / piano tuning	150.00	-	-	150.00	-
2330 - Church maintenance	3,335.62	-	-	3,335.62	-
2331 - Cleaning	2,364.90	-	-	2,364.90	-
2340 - Upkeep of services	14,810.04	-	-	14,810.04	-
2341 - UPKEEP OF WARMHUB	-	-	500.00	500.00	-
2350 - Upkeep of churchyard	773.06	-	14.99	788.05	-
2360 - Administration	2,649.53	-	-	2,649.53	-
2370 - Visiting speakers / locums	1,058.40	-	-	1,058.40	-
2401 - Church running - electric	(365.98)	-	-	(365.98)	-
2410 - Church running - gas	12,734.90	-	-	12,734.90	-
2420 - Church running - water	753.02	-	-	753.02	-
2440 - Church running - heating and lighting	633.00	-	-	633.00	-
2540 - Hall running - gas	1,515.16	-	-	1,515.16	-
2560 - Hall running - maintenance	145.24	-	-	145.24	-
2601 - Governance costs examination/audit fee	1,872.80	-	-	1,872.80	-
2720 - Church interior and exterior decorating	200.00	-	-	200.00	-
2840 - Other PCC property upkeep	2,192.72	-	-	2,192.72	-
<b>Expenditure on charitable activities Totals</b>	<b>97,059.33</b>	-	<b>10,657.45</b>	<b>107,716.78</b>	-

### Other expenditure

	General	Designated	Restricted	Total	
				This year	Last year
1750 - 100 Club	191.00	-	-	191.00	-
<b>Other expenditure Totals</b>	<b>191.00</b>	<b>-</b>	<b>-</b>	<b>191.00</b>	<b>-</b>
<b>Payments Grand Totals</b>	<b>97,732.71</b>	<b>-</b>	<b>10,657.45</b>	<b>108,390.16</b>	<b>-</b>

St Paul

Analysis of Receipts and Payments  
Selected period: 01 January 2024 to 31 December 2024

	General	Designated	Restricted	Total	
				This year	Last year
<b>Receipts</b>					
<b>Donations and legacies</b>					
0101 - Gift Aid - Bank	20,274.50	-	-	20,274.50	-
0110 - Gift Aid - Envelopes	11,757.01	-	-	11,757.01	-
0201 - Other planned giving	2,469.26	-	-	2,469.26	-
0301 - Loose plate collections	8,120.33	-	-	8,120.33	-
0302 - Loose Plate Baptism	1,032.00	-	-	1,032.00	-
0410 - Giving through church boxes	823.46	-	-	823.46	-
0501 - One-off Gift Aid gifts	964.00	-	-	964.00	-
0550 - Donations appeals etc	5,667.35	-	1,895.00	7,562.35	-
0601 - Tax recoverable on Gift Aid	9,622.69	-	-	9,622.69	-
0701 - Legacies	300.00	-	-	300.00	-
0801 - Recurring grants	11,055.40	-	-	11,055.40	-
08A1 - Non-recurring one-off grants	1,000.00	-	464.02	1,464.02	-
0901 - Other funds generated	12,282.38	-	370.00	12,652.38	-
0902 - Open Church Donations	639.00	-	-	639.00	-
0903 - Car Boot	472.00	-	-	472.00	-
0904 - Church Yard Giving	5.00	-	600.00	605.00	-
0911 - Events - Community ( eg fairs )	2,060.70	-	-	2,060.70	-
<b>Donations and legacies Totals</b>	<b>88,545.08</b>	<b>-</b>	<b>3,329.02</b>	<b>91,874.10</b>	<b>-</b>
<b>Income from charitable activities</b>					
0910 - Events - Social	241.75	-	-	241.75	-
1101 - Fees for weddings and funerals	11,432.00	-	-	11,432.00	-
1102 - Wedding & Funeral Mileage	310.67	-	-	310.67	-
1103 - Wedding & Funerals - Verger	790.00	-	-	790.00	-
1104 - Weddings & Funerals - Organist	1,320.00	-	-	1,320.00	-
1105 - Wedding & Funeral - Heating	525.00	-	-	525.00	-
1106 - Wedding & Funeral - CD Copyright	500.00	-	-	500.00	-
1107 - Wedding & Funerals Stonemason	933.00	-	-	933.00	-
1108 - Fallon nameplate	468.00	-	-	468.00	-
1109 - FUNERAL GRAVE DIG	65.00	-	-	65.00	-
1110 - WEDDING & FUNERALS VIDEO	100.00	-	-	100.00	-
1111 - Wedding & Funerals Bells	40.00	-	-	40.00	-
1230 - Church hall lettings - objectives	1,021.00	-	-	1,021.00	-
<b>Income from charitable activities Totals</b>	<b>17,746.42</b>	<b>-</b>	<b>-</b>	<b>17,746.42</b>	<b>-</b>
<b>Other trading activities</b>					
1240 - Church hall lettings - fund raising	13,456.62	-	-	13,456.62	-
1260 - Parish magazine sales	970.64	-	-	970.64	-
1270 - 100 Club	2,333.00	-	-	2,333.00	-
<b>Other trading activities Totals</b>	<b>16,760.26</b>	<b>-</b>	<b>-</b>	<b>16,760.26</b>	<b>-</b>
<b>Investments</b>					

	General	Designated	Restricted	Total	
				This year	Last year
1020 - Bank and building society interest	1,291.35	-	-	1,291.35	-
<b>Investments Totals</b>	<b>1,291.35</b>	-	-	<b>1,291.35</b>	-
<b>Receipts Grand Totals</b>	<b>124,343.11</b>	-	<b>3,329.02</b>	<b>127,672.13</b>	-

## Payments

### Raising funds

1701 - Fees paid to fund raisers	204.94	-	-	204.94	-
1720 - Costs of stewardship campaign	232.98	-	-	232.98	-
1725 - Cost of Digital Giving	44.46	-	-	44.46	-
<b>Raising funds Totals</b>	<b>482.38</b>	-	-	<b>482.38</b>	-

### Expenditure on charitable activities

1850 - Home mission	80.00	-	-	80.00	-
1910 - Ministry parish share etc	32,423.50	-	-	32,423.50	-
2001 - Assistant staff costs	40.00	-	-	40.00	-
2050 - Salary of parish administrator	6,019.35	-	-	6,019.35	-
2051 - Salary - Incumbent PA	1,218.00	-	9,705.66	10,923.66	-
2052 - Salary - Verger	350.00	-	-	350.00	-
2053 - Salary - Grave Digger	2,552.00	-	-	2,552.00	-
2060 - NI Costs parish administrator	231.68	-	-	231.68	-
2061 - NI - Incumbent PA	-	-	436.80	436.80	-
2063 - NI - Grave Digger	198.16	-	-	198.16	-
2101 - Working expenses of incumbent	2,484.10	-	-	2,484.10	-
2120 - Council tax	2,727.54	-	-	2,727.54	-
2130 - Parsonage house expenses	747.73	-	-	747.73	-
2140 - Water rates - vicarage	1,659.45	-	-	1,659.45	-
2170 - Education	34.32	-	-	34.32	-
2202 - Fallon nameplate	163.12	-	-	163.12	-
2310 - Church office - telephone	1,307.97	-	-	1,307.97	-
2320 - Organ / piano tuning	150.00	-	-	150.00	-
2330 - Church maintenance	3,335.62	-	-	3,335.62	-
2331 - Cleaning	2,364.90	-	-	2,364.90	-
2340 - Upkeep of services	14,810.04	-	-	14,810.04	-
2341 - UPKEEP OF WARMHUB	-	-	500.00	500.00	-
2350 - Upkeep of churchyard	773.06	-	14.99	788.05	-
2360 - Administration	2,649.53	-	-	2,649.53	-
2370 - Visiting speakers / locums	1,058.40	-	-	1,058.40	-
2401 - Church running - electric	(365.98)	-	-	(365.98)	-
2410 - Church running - gas	12,734.90	-	-	12,734.90	-
2420 - Church running - water	753.02	-	-	753.02	-
2440 - Church running - heating and lighting	633.00	-	-	633.00	-
2540 - Hall running - gas	1,515.16	-	-	1,515.16	-
2560 - Hall running - maintenance	145.24	-	-	145.24	-
2601 - Governance costs examination/audit fee	1,872.80	-	-	1,872.80	-
2720 - Church interior and exterior decorating	200.00	-	-	200.00	-
2840 - Other PCC property upkeep	2,192.72	-	-	2,192.72	-
<b>Expenditure on charitable activities Totals</b>	<b>97,059.33</b>	-	<b>10,657.45</b>	<b>107,716.78</b>	-

### Other expenditure

	General	Designated	Restricted	Total	
				This year	Last year
1750 - 100 Club	191.00	-	-	191.00	-
<b>Other expenditure Totals</b>	<b>191.00</b>	-	-	<b>191.00</b>	-
<b>Payments Grand Totals</b>	<b>97,732.71</b>	-	<b>10,657.45</b>	<b>108,390.16</b>	-

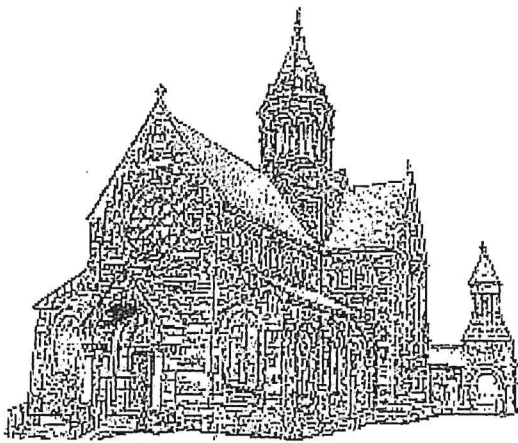
**THE PAROCHIAL CHURCH COUNCIL OF THE ECCLESIASTICAL PARISH OF ST. PAUL'S, HOOTON**

England & Wales - Charity number 1134654

---

# Accounts

---



**ANNUAL REPORT**

**PAROCHIAL CHURCH COUNCIL**

**For the year ending 31<sup>st</sup> December 2023**

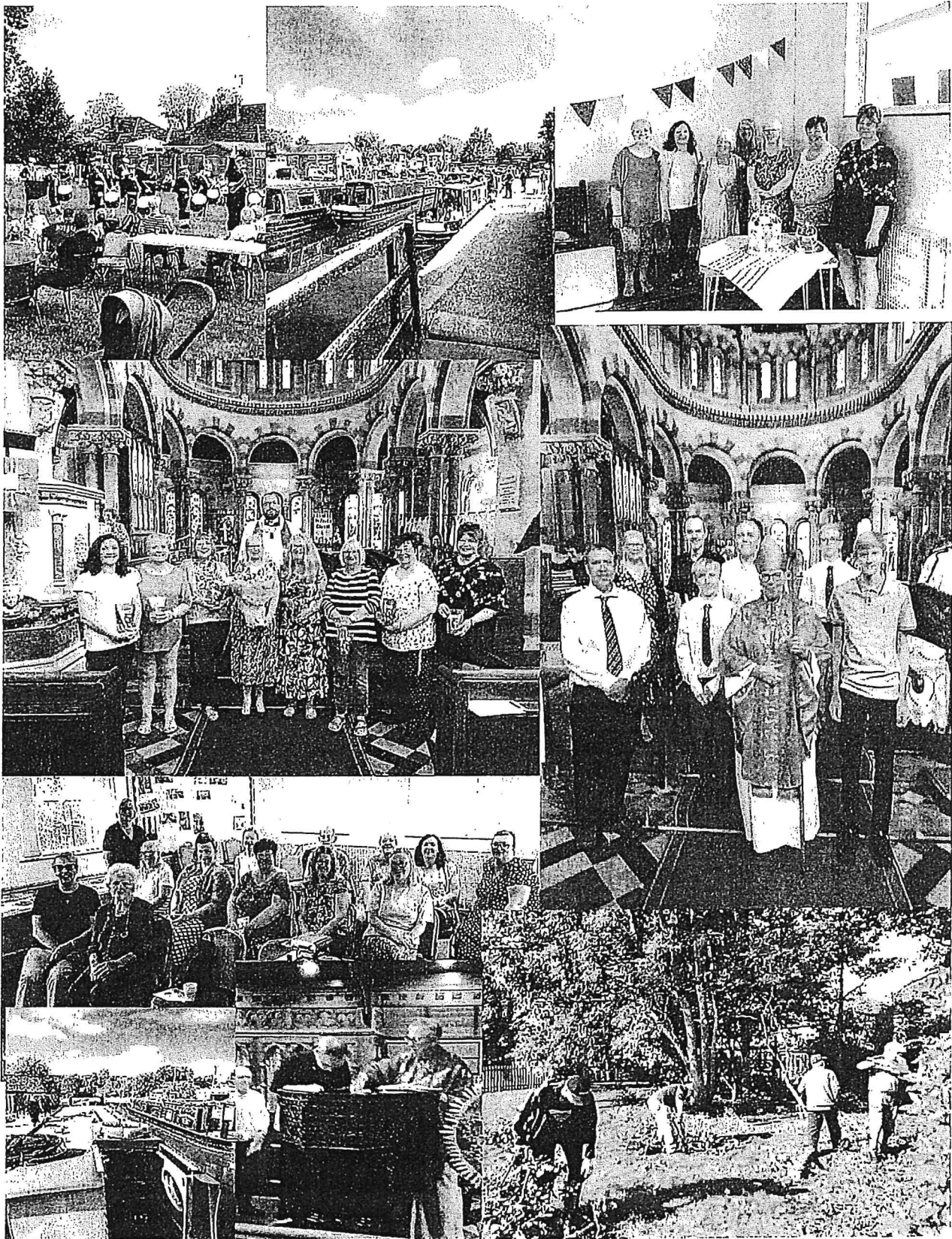
PAROCHIAL CHURCH COUNCIL OF ST PAUL'S, HOOTON  
ANNUAL REPORT (continued)  
For the year ended 31 December 2023



PAROCHIAL CHURCH COUNCIL OF ST PAUL'S, HOOTON  
ANNUAL REPORT (continued)  
For the year ended 31 December 2023



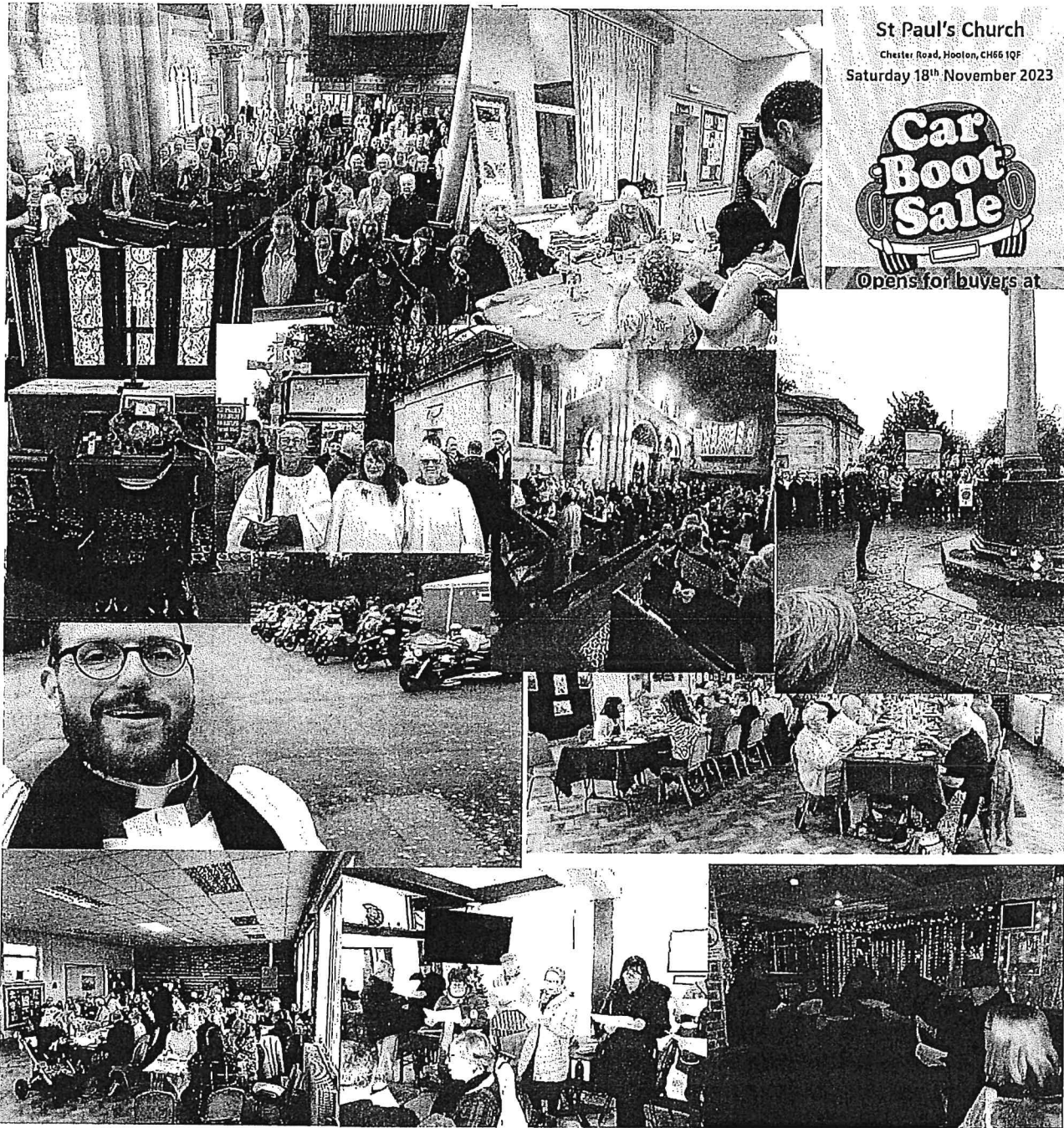
PAROCHIAL CHURCH COUNCIL OF ST PAUL'S, HOOTON  
ANNUAL REPORT (continued)  
For the year ended 31 December 2023



PAROCHIAL CHURCH COUNCIL OF ST PAUL'S, HOOTON  
ANNUAL REPORT (continued)  
For the year ended 31 December 2023



PAROCHIAL CHURCH COUNCIL OF ST PAUL'S, HOOTON  
ANNUAL REPORT (continued)  
For the year ended 31 December 2023



**PAROCHIAL CHURCH COUNCIL OF ST PAUL'S, HOOTON**  
**ANNUAL REPORT (continued)**  
**For the year ended 31 December 2023**

**ADMINISTRATIVE INFORMATION**

St Paul's is situated on Chester Road in Little Sutton, a village eight miles from Chester. The ecclesiastical parish is made up of the three communities of Hooton, Childer Thornton and Little Sutton. The correspondence address for the parish is Hooton Vicarage, Chester Road, Little Sutton CH66 1QF. The Parochial Church Council (PCC) is a body corporate (PCC Powers Measure 1956, Church Representation Rules 2022) and a charity registered with the Charity Commission.

Registered Charity no. 1134654

**STRUCTURE, GOVERNANCE AND MANAGEMENT**

Our ACM was held in April following Church and Government guidelines. Two nominations were received for the two positions of Church Wardens and they were elected unanimously to continue as Churchwardens for another year.

PCC members are appointed in accordance with the Church Representation Rules. Membership consists of ex officio members (as listed above) and members elected by those whose names are on the Electoral Roll or live in the Parish. All those who attend our services — and are members of the congregation — are encouraged to register on the Electoral Roll and stand for election to the PCC.

There were two vacancies on the PCC at the time of the ACM. Both were elected unanimously at the meeting.

We have three Deanery Synod Representatives and at the time of the AGM there was one vacancy, which remains however, the other two posts were re-elected.

In September 2023 The Revd. Jo Pemberton was licensed to our parish as Self Support Minister and Curate in Training.

The PCC met eight times in the year. The average attendance was 76%. All the meetings in 2023 were chaired by the new Chair, Father Mark. The Standing Committee met once in 2023 (under Church Representation Rules 2011 M31/6). PCC members are responsible for discussing and making decisions on all matters of concern and importance to the parish which includes finance, maintenance of the fabric of the church and grounds and social activities held by the church.

This year the PCC were split into working groups with the following names and remit:

**Estates** – to identify as much maintenance of the fabric needed on the church estate and complete.

**Events** – To plan social events throughout the year with the aim to develop community and increase income.

**Finance** – to review our financial situation. Seeking to wisely minimise outgoing and increase income, whilst remaining missional. What is our budget for mission, buildings, charitable giving? Like any family that is feeling the pinch we need to look at all our spending and budget fairly to achieve our aims.

**Worship** – to ensure that current worship at St Pauls is practically within our skill set, working at its best to develop community and how that community worships Almighty God. This group will work on the liturgy in church, what our diet of worship looks like. It will be creative for Easter, Christmas, Ascension, Pentecost, Epiphany, Lent, Advent. This group will help create, lead the family services.

**Forward thinking** – this is a group who will lead us in discerning Gods will for this parish. It will be looking forward to the future. Thinking of our overarching aims and objectives. How we can move forward, making this a centre for prayer, worship, learning, service, family, community.

**PAROCHIAL CHURCH COUNCIL OF ST PAUL'S, HOOTON**  
**ANNUAL REPORT (continued)**  
**For the year ended 31 December 2023**

**AIMS AND OBJECTIVES**

The parochial church council (PCC) works with the vicar to promote the mission of the church in the local context. This work is pastoral, evangelistic, social, and ecumenical in nature. We endeavour to communicate our faith and values through words and action, in the creation of a caring Christian community that is outward looking. As well as providing service to our community in a variety of situations we provide the church hall for various social needs and aspirations.

**ACHIEVEMENTS AND PERFORMANCE**

The PCC is committed to enabling as many people as possible to worship at our Church, and to become part of our parish family. When planning our activities, certain members of the PCC have considered the Charity Commission's guidance on public benefit, and in particular the specific guidance on charities for the advancement of religion. Our services and worship put faith into practice through prayer and scripture, music and sacrament. We try to enable ordinary people to live out their faith as part of our parish family, through:

- Worship and prayer: learning about the Gospel, and developing their knowledge and trust in Jesus.
- Provision of pastoral care for people living in the parish.
- Mission and outreach work.

To facilitate this work, it is vital that we maintain the fabric of the church building.

At St Paul's we are a community of many layers that come together to worship God and serve those around us. We aim to welcome everyone and have developed our sense of inclusivity. We hear God calling those in the margins locally, to be at the centre of His church. We hear God calling back those who have once left church.

The statistics show that St Paul's Electoral Roll is up from 222 at the end of 2022 to 226 in 2023.

There were 42 baptisms and three weddings:

168 adults and children attended Easter and 294 attended Christmas.

47 funerals were held in church 2 at a crematorium and there were a total of 20 committals only or burial of ashes. Memorial Services to remember those who had died were held in May and October as previous years, but this year we also worked with the two local Funeral Directors to conduct memorial services for their clients. In one service every seat in the church was taken. The other service had in excess of 50 people attending.

This year has seen the reintroduction of the women's fellowship.

We have also seen the introduction of a monthly men's breakfast.

The church is now open during the week initially between the hours of 8am and 4pm for prayer. Due to the popularity of this venture, we are now open seven days a week for prayer.

We have introduced a votive stand which has directed people to prayer but also increased our donations.

The main achievement for 2023 is a sense of community, a buzz, working together, enabling others talents and gifts. The second achievement is a sense of inclusion and that all are welcome here.

**WORSHIP**

Over the last year we have lightly reviewed all the services and their collective range. We have assessed our likes and dislikes, strengths and areas for development. It was therefore agreed to experience a refreshed diet of worship at St Pauls from September 2023 to July 2024 and review it as a PCC.

**1st Eucharist with Sunday club**

This will be the typical Sunday Eucharist service that we already have a pattern of at St Pauls. The Sunday club will meet separately in the small church hall under the supervision of Gwen

**PAROCHIAL CHURCH COUNCIL OF ST PAUL'S, HOOTON**  
**ANNUAL REPORT (continued)**  
**For the year ended 31 December 2023**

**2nd Family Eucharist**

This will replace the current family service. It will still be a family service for the whole church, including the Sunday Club. The important difference here is that the Eucharist will be led by children. They will take on roles as carrying the processional cross and candles, reading, leading intercessions, assisting to distribute the elements. The talk will still be in a similar vein to the current family service. This will be informal formal. My hope is that the talks will be given by a variety of people both lay and ordained. The service will be interactive, and the hymns will be child friendly. It is to this service I will be writing to the Year 6 students at Little Sutton Primary looking for volunteers. Of course, with those volunteers comes parents to watch!

**3rd Eucharist with Sunday Club**

This will be the typical Sunday Eucharist service that we already have a pattern of at St Pauls. The Sunday club will meet separately in the small church hall under the supervision of Gwen

**4th Café Church with Sunday Club**

This is a non-eucharistic service that will replace the Service of the Word. It will be in the large hall with tea, coffee and croissant, muffins etc. It will bring back the parish breakfast. There will be hymns, readings, a talk, prayers, maybe some open discussion with those on our tables.

**5th Eucharist with Prayers for Healing**

This would be a standard Eucharist service but after receiving the Communion elements there would be two people offering prayers for healing. Please speak to the vicar if you have any questions about this service and what spiritual healing is about. This service will start after Christmas due to holidays and Christmas services.

As well as this we have included newer annual services which include a Pet Blessing Service (with 30 human souls), Dawn Service on Easter day (12 souls). Holy week evening activities, reflections and services.

**WORKS, MAINTENANCE, HEALTH AND SAFETY**

Variously known as the Monday Club or the Fabric Committee, there is a small group of energetic people led by Peter Jarvis who ensure that the church, church hall, churchyard and grounds are maintained in a satisfactory state to enable the ongoing activities of St Paul's to proceed in a safe and enjoyable manner. Activities include planned maintenance involving the testing of fire alarms, fire extinguishers, emergency lighting and security systems against a schedule, arrangement and supervision of routine maintenance by specialist contractors, and various other jobs, large and small on an "As & When" basis. The Monday Club is now supported by the aforementioned Estate Group of the PCC, who oversee the need for work. The link between the two groups is Mr Mark Holmes (Church Warden).

We have started a programme of refreshing the Church Hall this year to make it more attractive to renters, birthday parties etc. We are indebted to the Community Payback Team for their work in the churchyard throughout the year where they undertake most of the grass cutting, debris removal and clearance of the drainage ditch which runs down the entire north side as well as other tasks as they arise. Williams and Sons Funeral Directors have assisted with clearing the embankment on the north side of the church.

**PASTORAL CARE**

St Pauls Church is back into the swing of pastoral care. Regular visits are now conducted by the Vicar and the Curate. We are here to offer end of life pastoral care as well as ongoing home visits. Next year we hope to have in place a team who will assist.

**COMMUNICATION**

There have been a few changes in the way communication happens at St Pauls in 2023, whilst we have been trying out different methods there now seems to be a happy medium.

The link was taken over by the Vicar in 2023, and thanks is made to Sarah Wood who had been producing it previously. The weekly link sheet has more information on about the parish, including prayers and bible readings. The link has however retained parts of its former self.

**PAROCHIAL CHURCH COUNCIL OF ST PAUL'S, HOOTON**  
**ANNUAL REPORT (continued)**  
**For the year ended 31 December 2023**

Concern about the real cost of the parish magazine, which not only included production costs but staffing, were realised. A request was made to the congregation for an editor to take over the magazine on a voluntary basis. We are grateful to Ben and Sam McCormick for taking this on. Under their stewardship the magazine has really increased in articles, items, posters, and generally is a bigger thing.

Our churchnearyou was the primary way of communication online for 2023, this was taken over by the Vicar and a thanks is noted to David Busfield for keeping this up to date previously. It is here we were initially able to advertise the new initiatives of the men's breakfast and the women's fellowship returning.

In April 2023 the PCC invested in our own new website. This was initially set up as a way of showing the local community what we do and who we are. How they can use us and contact us. The initially website was similar to a holding area. It was very static in the information being shared. Moving into 2024 this is being reviewed by the Vicar and a volunteer member of the congregation Olly Adam. The aim is that this website will be up to date with all the activities, sermons, photos of the Churches activities.

Facebook has been a major success for St Pauls. We have really made a footprint on this social media platform. Through it we have shared pictures, events, up and coming events, been able to assist the local community with requests, taken more hall bookings. We have shared services, not only at Easter and Christmas, but the Pet Services, Memorial Services etc. We have a good groups of followers and supporters.

Email addresses have been changed to a standard format and reflecting the new roles within the parish. These include: [Hootonvicar@gmail.com](mailto:Hootonvicar@gmail.com) [Hootoncurate@gmail.com](mailto:Hootoncurate@gmail.com) [Hootonparish@gmail.com](mailto:Hootonparish@gmail.com) and [Hootonsafeguarding@gmail.com](mailto:Hootonsafeguarding@gmail.com)

St Paul's holds all appropriate copyright notices from CCLI and fully complies with GDPR legislation.

### **INITIATION AND NURTURE**

Seven candidates were prepared and presented by the Vicar for Confirmation by the Bishop of Birkenhead. All Seven are regular communicants at St Pauls post-confirmation.

### **SCHOOL CONNECTIONS**

In 2023 the links with our local primary schools have been picked up by the Vicar. We have a strong working relationship with Little Sutton CoE Primary. We have sent our congregation to volunteer to build their Spiritual Garden. Gwen Wale has spent a lot of time over this last year working closely with reading and other activities. Mrs Sarah Wood acts as a Foundation Governor, alongside the Vicar. Fr Mark attends the School regularly, for a weekly Collective Act of Worship and various meetings with teachers and the Headmistress. Little Sutton CoE Primary attend the Church building regularly for major Christian festivals. Children from the School have assisted with our Family Eucharist service.

In 2023 firmer links have been made with Children Thorton Primary, Rossmore Primary and Parklands Primary, who have all allowed the Vicar to attend regularly for assemblies and Collective Acts of Worship.

### **SUNDAY CLUB**

The Sunday Club is led by Gwen Wale and a dedicated team of helpers who operate on a rota basis. Child Protection and Health and Safety protocols are in full operation and checked on at regular intervals. It meets at 10.30am on Sunday morning in the church hall and through the year we have had an average of 8 children attending each week.

We generally follow the Lectionary, as we find that we don't have the same children every week. This is working very well but we do have 'Click', 'On the Way' and 'In Sight' to use as back-ups. The series of units take us through the Old and New Testaments covering all aspects of our Christian faith. All teaching material involves the children having fun with crafts and activities whilst learning.

We also take part in Family Worship on the second Sunday of each month with prayers, dramas, and readings. Parents have commented at how much their children have grown in confidence due to taking part in these services.

**PAROCHIAL CHURCH COUNCIL OF ST PAUL'S, HOOTON**  
**ANNUAL REPORT (continued)**  
**For the year ended 31 December 2023**

### **SOCIAL EVENTS**

The Events Planning Team organised a range of events during the year, re-introducing some old favourites. As ever popular events centred around food and fellowship. In 2023 we have had bring and share suppers, Coronation celebrations, Pimm's and hymns, games night, harvest supper, and much, much more.

WE have walked with St Johns Church Great Sutton on a pilgrimage to Chester Cathedral. In fact our walking group has covered some great miles over the year of 2023. This has been keenly led by my Les, Nick and Mark. We mustn't forget a lovely boat trip from Trevor to Chirk.

Major fundraising came from the Summer and Christmas Fairs, which provided much needed funds.

### **WOMENS FELLOWSHIP**

Following the first meeting held in July 2023 the Fellowship has met on the third Thursday of every month. Meetings start at 2pm and this has proved a popular time with the group. Subjects covered have included, Keeping safe in our homes and online, Support for carers, the Home Guard in WW2, Cake decorating, A joint lunch with GTT group, Valentine special, History and Present day success of Berwick Road School (2 separate speakers), Bee keeping and a Strawberry tea.

To help with funds we run a monthly raffle with donations by the group. And of course, we always finish the meetings with tea, lots of cake and a good deal of chat. The average attendance is between 15 and 20 ladies. It is intended to run the Fellowship from September to June.

### **MENS BREAKFAST**

Early on in the year we introduced the Men's Breakfast at St Pauls as a way to get blokes together to chat and eat. Spending time in each other's company. This has grown to a steady 12 to 15 men, who attend, set up and clean up after the breakfast. Moving forward it is envisaged that the breakfast will include a speaker.

### **DEANERY SYNOD**

Richard Soper and Sarah Wood are our parish representatives and there were several meetings during the year led by the Rural Dean Revd Beth Glover. Meetings were held at St Marys Eastham, St Thomas and All Saints Ellesmere Port, and the Chapel of the Holy Spirit /Parish Centre on Eastham Rake. The responses from all the Deanery events in the Diocese will then contribute towards the Bishops' work on setting a vision and direction for the Diocese. We have one space left that during 2023 has been unfilled.

### **ECUMENICAL PARTICIPATION**

In 2023 we have started to build good relationships with our ecumenical brothers and sisters. March 2023, we attended the World Day of Prayer which was hosted by the local Methodist Church. Fr Mark welcomed the new Methodist Minister at her induction service. We invited the Roman Catholic parish to a choral evensong to celebrate the feast of Ss Peter and Paul, which was very well attended. Fraternal conversations continue into 2024.

### **SAFEGUARDING**

The Parish reviewed and updated its safeguarding policy in 2023, in order to cover both children and vulnerable adults. The policy is now in line with the diocesan/national church safeguarding guidelines. All members of the PCC have completed a DBS check and have started a program of safeguarding training. Gwen Wale continues to act as Safeguarding coordinator for the parish.

**PAROCHIAL CHURCH COUNCIL OF ST PAUL'S, HOOTON**  
**ANNUAL REPORT (continued)**  
**For the year ended 31 December 2023**

**VOLUNTEERS**

All our volunteers are warmly thanked for their contribution to the work and ministry of St Paul's and we mention the Monday group who cover the items described in the maintenance section above, church cleaners, flower carers, refreshments providers, magazine deliverers and event organisers, through to those who help to tidy the chairs away after social functions.

**FINANCIAL REPORT 2023**

The financial statements have been prepared in accordance with the accounting policies set out in the publication PCC Accountability 5th edition incorporating SORP 2015 issued by the Archbishops Council.

This was a new year for St Pauls, we engaged in a new way of thinking and a living. We have all lived generously with our money, time, fundraising efforts. The PCC and congregation are being empowered, affirmed, and thanked. This is a church that has a priesthood of all believers working together. We have engaged in various fundraising activities, including hosting a car boot sale, various month events. We are slowly making the change that we want. With the increase in attendance and the increase in hall hires, we feel this is achievable.

Total resources expended for 2023 amounted to £140,155 an increase of £21,348 on 2022 whilst income of £130,114 surpassed the 2022 figure by £25,936 but the net result is a deficit of £10,041; however, we are continually looking towards a more stabilised future with confidence.

PCC members who served from 1 January 2023 until 31st December 2023 are:

**Ex-Officio Members**

Incumbent:	Rev Mark R J Turner (Chair)
Church Wardens:	Alex Duffey Mark Holmes

Deanery Synod Reps	Richard Soper Sarah Wood
--------------------	-----------------------------

Elected Members	David Busfield (Treasurer and Vice Chair) Peter Vaughan (Reader Emeritus) Lynne Bergin (Secretary) Jan Barnett Sarah-Jane Turner (co-oped) Jo Byrne Kathleen Hitchmough Wendy Holmes Viv Langan Jane Sheehy Nicolas John Revill Gwendoline Wale
-----------------	--

Approved by the PCC on 31<sup>st</sup> March 2024 and signed on its behalf by:



Rev'd Mark Turner  
(Incumbent/Chair)



Alex Duffey  
(Churchwarden)



Mark Holmes  
(Churchwarden)

**PAROCHIAL CHURCH COUNCIL OF ST PAUL'S, HOOTON**  
**ANNUAL REPORT (continued)**  
**For the year ended 31 December 2023**

**Registered Charity No. 1134654**  
**FINANCIAL STATEMENTS**  
**For the year ended 31 December 2023**

**Independent examiner's report to the trustees of The Parochial Church Council of St Paul's Hooton**

I report to the charity trustees on my examination of the accounts of The Parochial Church Council of St. Paul's Hooton for the year ended 31 December 2023.

**Responsibility and basis of report**

As the charity trustees you are responsible for the preparation of the accounts in accordance with the requirements of the Charities Act 2011 ('the Act').

I report in respect of my examination of the charity's accounts carried out under section 145 of the Act and in carrying out my examination I have followed all applicable directions given by the Charity Commission under Section 145(5)(b) of the Act.

**Independent examiner's statement**

I have completed my examination. I confirm that no material matters have come to my attention in connection with the examination giving me cause to believe that in any material respect:

1. Accounting records were not kept in respect of the charity as required by section 130 of the Act; or
2. The accounts do not accord with those records; or
3. The accounts do not comply with the applicable requirements concerning the form and content of accounts set out in the Charities (Accounts and Reports) Regulations 2008 other than any requirement that the accounts give a true and fair view which is not a matter considered as part of an independent examination.

I confirm that there are no other matters to which your attention should be drawn to enable a proper understanding of the accounts to be reached.



Suzanne Draper FCCA ACA  
ICAEW  
SB&P  
Oriel House  
2-8 Oriel Road  
Bootle  
Liverpool  
Merseyside  
L20 7EP

Date: ..... 19/4/2024 .....

**PAROCHIAL CHURCH COUNCIL OF ST PAUL'S, HOOTON**  
**ANNUAL REPORT (continued)**  
**For the year ended 31 December 2023**

**NOTES TO THE FINANCIAL STATEMENTS**  
**For the year ended 31 December 2023**

**1. ACCOUNTING POLICIES**

The charity constitutes a public benefit entity as defined by FRS 102. The financial statements have been prepared in accordance with Accounting and Reporting by Charities: Statement of Recommended Practice applicable to charities preparing their accounts in accordance with the Financial Reporting Standard applicable in the UK and Republic of Ireland (FRS102) issued on 16 July 2014 (as updated through Update Bulletin 1 published on 2 February 2016), the Financial Reporting Standard applicable in the UK and Republic of Ireland (FRS102), the Charities Act 2011 and UK Generally Accepted Practice as it applies from 1 January 2015.

The charity has applied Update Bulletin 1 as published on 2 February 2016 and does not include a cash flow statement on the grounds that it is applying FRS 102 Section 1A.

The financial statements are prepared on a going concern basis under the historical cost convention.

**Funds**

General funds represent the funds of the PCC that are not subject to any restrictions regarding their use and are available for application on the general purposes of the PCC. Funds designated for a particular purpose by the PCC are also unrestricted. The financial statements include all transactions, assets and liabilities for which the PCC is responsible in law. They do not include the financial statements of church groups that owe their main affiliation to another body nor those that are informal gatherings of Church members.

Restricted funds are funds which are to be used in accordance with specific restrictions imposed by the donors

**Incoming Resources**

All incoming resources are included in the Statement of Financial Activities (SOFA) when the charity is legally entitled to the income after any performance conditions have been met, the amount can be measured reliably and it is probable that the income will be received.

No amount is included in the financial statements for volunteer time in line with the SORP (FRS 102).

*Voluntary income and capital sources*

Collections are recognised when received by or on behalf of the PCC. Planned giving receivable under Gift Aid is recognised only when received. Tax recoverable on Gift Aid donations is recognised when the income is recognised. Funds raised by the fete, garden party and similar events are accounted for gross. Sales of books and magazines from the church bookstall are accounted for gross.

*Other Income*

Rental income from the letting of church premises is recognised when the rental is due.

*Income from Investments*

Dividends are accounted for when due and payable and interest entitlements are accounted for as they accrue. Tax recoverable on such income is recognised in the same accounting year.

**PAROCHIAL CHURCH COUNCIL OF ST PAUL'S, HOOTON**  
**ANNUAL REPORT (continued)**  
**For the year ended 31 December 2023**

**NOTES TO THE FINANCIAL STATEMENTS**  
**For the year ended 31 December 2023**

**Resources used**

All expenditure is accounted for on an accruals basis and has been classified under headings that aggregate all costs related to the category. Expenditure is recognised when there is a legal or constructive obligation to make payments to third parties, it is probable that the settlement will be required and the amount of the obligation can be measured reliably.

Support costs are those that assist the work of the charity but do not directly represent charitable activities and include office costs, governance costs, and administrative payroll costs. They are incurred directly in support of expenditure on the objects of the charity. Where support costs cannot be directly attributed to particular headings they have been allocated to cost of raising funds and expenditure on charitable activities on a basis consistent with use of the resources.

*Grants*

Grants and donations are accounted for when paid over, or when awarded, if that award creates a binding obligation on the PCC.

*Activities directly relating to the work of the Church*

The diocesan parish share is accounted for when due. Any parish share unpaid at the year end is provided for in these accounts as an operational (though not a legal) liability and is shown as a creditor in the Balance Sheet.

**Fixed assets**

*Consecrated property and movable church furnishings*

Consecrated and beneficed property of any kind is excluded from the financial statements by s.10(2)(a) of the Charities Act 2011. All expenditure incurred in the year on consecrated or beneficed buildings, individual items under £1,000 or on the repair of moveable church furnishings acquired before 1 January 2000 is written off.

*Other fixtures, fittings and office equipment*

Equipment used within the church premises is depreciated on a straight line basis over four years to write off the cost of each asset over its expected useful life. Individual items of equipment with a purchase price of £1,000 or less are written off when the asset is acquired.

*Current assets*

Short-term deposits include cash held on deposit either with the CBF Church of England Funds or at the bank.

**Tax**

The charity is an exempt charity within the meaning of schedule 3 of the Charities Act 2011.

**Going Concern**

The financial statements have been prepared on a going concern basis as the trustees believe that no material uncertainties exist. The trustees have considered the level of funds held and the expected level of income and expenditure for 12 months from authorising these financial statements. The budgeted income and expenditure is sufficient with the level of reserves for the charity to be able to continue as a going concern.

**PAROCHIAL CHURCH COUNCIL OF ST PAUL'S, HOOTON**  
**ANNUAL REPORT (continued)**  
**For the year ended 31 December 2023**

**What others have said about St Pauls Church:**

“We felt very welcomed into St Paul’s and received numerous comments from other family and friends to say how welcoming and light-hearted the service was.

Thank you very much for making our daughter’s day so special. We look forward to seeing you again soon.”

PAROCHIAL CHURCH COUNCIL OF ST PAUL'S, HOOTON

STATEMENT OF FINANCIAL ACTIVITIES

For the year ended 31 December 2023

	Note	Unrestricted Funds £	Designnated Funds £	Restricted Funds £	Endowment Funds £	TOTAL FUNDS 2023	TOTAL FUNDS 2022
<b>INCOMING RESOURCES</b>							
Voluntary income	2a	67,875	1,472	809	-	70,157	54,202
Activities for Generating Funds	2b	20,973	-	-	-	20,973	17,159
Income from Church Activities	2c	37,515	-	-	-	37,515	31,143
Income from Investments	2d	-	1,469	-	-	1,469	690
Other Incoming Resources	2e	-	-	-	-	-	986
<b>TOTAL INCOMING RESOURCES</b>		<b>126,364</b>	<b>2,941</b>	<b>809</b>	<b>-</b>	<b>130,114</b>	<b>104,179</b>
<b>RESOURCES EXPENDED</b>							
Grants and Charitable Donations	3a	633	-	-	-	633	286
Church Activities	3b	130,913	394	2,514	-	133,821	112,212
Costs of Generating Funds	3c	645	-	-	-	645	801
Costs of Governance and Support	3d	5,056	-	-	-	5,056	5,508
<b>TOTAL RESOURCES EXPENDED</b>		<b>137,247</b>	<b>394</b>	<b>2,514</b>	<b>-</b>	<b>140,155</b>	<b>118,807</b>
<b>NET INCOMING (OUTGOING)</b>							
<b>RESOURCES</b>		<b>-</b>	<b>10,883</b>	<b>2,548</b>	<b>-</b>	<b>1,705</b>	<b>-</b>
Depreciation		-	-	-	-	-	-
<b>GAINS AND LOSSES ON INVESTMENTS</b>							
Realised		-	-	-	-	-	-
Unrealised		-	-	-	-	-	-
Capital adjustment		-	-	-	-	-	-
<b>TRANSFERS BETWEEN FUNDS</b>	9	<b>20,000</b>	<b>-</b>	<b>20,000</b>	<b>-</b>	<b>-</b>	<b>-</b>
<b>NET MOVEMENT IN FUNDS</b>		<b>9,117</b>	<b>-</b>	<b>17,452</b>	<b>-</b>	<b>1,705</b>	<b>-</b>
<b>BALANCE B/FWD AT 1 JANUARY</b>		<b>384,569</b>	<b>49,099</b>	<b>12,444</b>	<b>-</b>	<b>446,111</b>	<b>460,739</b>
<b>BALANCES C/FWD AT 31 DECEMBER</b>		<b>393,685</b>	<b>31,646</b>	<b>10,739</b>	<b>-</b>	<b>436,070</b>	<b>446,111</b>

PAROCHIAL CHURCH COUNCIL OF ST PAUL'S, HOOTON

BALANCE SHEET

For the year ended 31 December 2023

	Note	2023	2022
		£	£
<b>FIXED ASSETS</b>			
Tangible fixed assets	5	378,798	
		<u>378,798</u>	<u>-</u>
<b>CURRENT ASSETS</b>			
Debtors	7	18,674	17,264
CBF Church of England short term deposits		29,037	47,569
Cash at bank and in hand		13,822	5,821
		<u>61,533</u>	<u>70,654</u>
<b>LIABILITIES: AMOUNTS FALLING</b>			
DUE WITHIN ONE YEAR	8	4,262	3,341
<b>NET CURRENT ASSETS</b>			
		57,272	67,313
<b>NET ASSETS</b>			
		<u>436,070</u>	<u>446,111</u>
<b>FUNDS</b>			
	6		
Unrestricted		393,685	384,569
Designated		31,646	49,099
Restricted		10,739	12,444
Endowment		-	-
		<u>436,070</u>	<u>446,111</u>

Approved by the Parochial Church Council on \_\_\_\_\_ and signed on its behalf by:

Revd Mark Turner  
Vicar of St Paul's Hooton

Mr Mark Stanley Holmes  
Church Warden

Mrs Alexandra Lucille Duffey  
Church Warden

PAROCHIAL CHURCH COUNCIL OF ST PAUL'S, HOOTON

NOTES TO THE FINANCIAL STATEMENTS

For the year ended 31 December 2023

2	INCOMING RESOURCES	Unrestricted	Designated	Restricted	Endowment	TOTAL	TOTAL
		Funds	Funds	Funds	Funds	FUNDS	FUNDS
		£	£	£	£	2023	2022
2a	<b>Voluntary Income</b>						
	Tax-efficient Planned Giving	32,460				32,460	25,274
	Other Planned Giving	5,706				5,706	5,532
	Collections (Offertory Plate)	9,494				9,494	6,238
	Occasional Gift Aid	2,626				2,626	1,306
	Income tax recovered and recoverable	9,623				9,623	9,387
	Donations, including flower fund	7,966	1,472	809		10,248	4,465
		<u>67,875</u>	<u>1,472</u>	<u>809</u>	<u>-</u>	<u>70,157</u>	<u>54,202</u>
2b	<b>Activities for Generating Funds</b>						
	Fetes, bazaars, other fund raising events	8,841				8,841	6,270
	Church hall lettings, etc.	12,133				12,133	10,889
		<u>20,973</u>	<u>-</u>	<u>-</u>	<u>-</u>	<u>20,973</u>	<u>17,159</u>
2c	<b>Income from Church Activities</b>						
	Magazine	235				235	1,177
	Sub Group income					-	173
	Fees	37,280				37,280	29,793
		<u>37,515</u>	<u>-</u>	<u>-</u>	<u>-</u>	<u>37,515</u>	<u>31,143</u>
2d	<b>Income from Investments</b>						
	Dividends and interest		1,469			1,469	690
		<u>-</u>	<u>1,469</u>	<u>-</u>	<u>-</u>	<u>1,469</u>	<u>690</u>
2e	<b>Other Incoming Resources</b>						
	Miscellaneous income					-	-
	HMRC CJRS Furlough Grants					-	-
	CDDF Energy grant					-	986
		<u>-</u>	<u>-</u>	<u>-</u>	<u>-</u>	<u>-</u>	<u>986</u>
	<b>TOTAL INCOMING RESOURCES</b>	<u>126,364</u>	<u>2,941</u>	<u>809</u>	<u>-</u>	<u>130,114</u>	<u>104,179</u>

PAROCHIAL CHURCH COUNCIL OF ST PAUL'S, HOOTON

NOTES TO THE FINANCIAL STATEMENTS

For the year ended 31 December 2023

3 RESOURCES EXPENDED		Unrestricted	Designated	Restricted	Endowment	TOTAL	TOTAL
		Funds	Funds	Funds	Funds	FUNDS	FUNDS
		£	£	£	£	2023	2022
3n	Grants						
	Missionary and charitable giving						
	Home missions and other church societies	633				633	286
		<u>633</u>	-	-	-	<u>633</u>	<u>286</u>
3b	Church Activities						
	Ministry: Diocesan Parish Share	81,351				81,351	69,667
	Clergy expenses	934				934	512
	Visiting clergy						162
	Church maintenance and running expenses	14,527		959		15,486	11,802
	Upkeep of churchyard	-		1,555		1,555	1,057
	Parish magazine costs		394			394	505
	Sub group costs						114
	Church hall running costs	7,144				7,144	5,805
	Salaries, Wages and Honoraria	10,187				10,187	4,824
	Cost of services	3,637				3,637	2,945
	Costs of fees	9,307				9,307	12,374
	Vicarage (less donations to "Vicarage Fund")	3,827				3,827	2,446
		<u>130,913</u>	<u>394</u>	<u>2,514</u>	<u>-</u>	<u>133,821</u>	<u>112,212</u>
3c	Costs of Generating Funds						
	Costs of fetes and other fund-raising						
	Weekly giving envelopes						141
	Flower fund	645				645	660
		<u>645</u>	-	-	-	<u>645</u>	<u>801</u>
3d	Costs of Governance and Support						
	Office Equipment, Consumables & Maintenance	4,018				4,018	4,448
	Bank charges and loan interest						-
	Independent Examiner	1,038				1,038	990
	Deanery subscription						70
		<u>5,056</u>	-	-	-	<u>5,056</u>	<u>5,508</u>
	<b>TOTAL RESOURCES EXPENDED</b>	<u>137,247</u>	<u>394</u>	<u>2,514</u>	<u>-</u>	<u>140,155</u>	<u>118,807</u>

PAROCHIAL CHURCH COUNCIL OF ST PAUL'S, HOOTON

NOTES TO THE FINANCIAL STATEMENTS

For the year ended 31 December 2023

	2023	2022
	£	£
<b>4 STAFF COSTS</b>		
Salaries	10,187	4,528
Income tax		-
Average number of employees	1	1
No employees received total employee benefits of more than £60,000		

**5 FIXED ASSETS**

Tangible fixed assets	Freehold land and buildings	Fixtures and fittings	Total
	£	£	£
Cost at 1 Jan 2023	378,798	-	378,798
Additions at cost	-	-	-
Disposal	-	-	-
<b>Cost at 31 Dec 2023</b>	<b>378,798</b>	<b>-</b>	<b>378,798</b>
Depreciation at 1 Jan 2023	-	-	-
Charge for year	-	-	-
Depreciation on disposals	-	-	-
<b>Depreciation at 31 December 2023</b>	<b>-</b>	<b>-</b>	<b>-</b>
<b>Net book value at 31 Dec 2023</b>	<b>378,798</b>	<b>-</b>	<b>378,798</b>
<b>Net book value at 31 Dec 2022</b>	<b>378,798</b>	<b>-</b>	<b>378,798</b>

**6 ANALYSIS OF NET ASSETS BY FUND**

	Unrestricted Funds	Designated Funds	Restricted Funds	Endowment Funds	TOTAL FUNDS 2023
	£	£	£	£	£
Fixed assets	378,798	-	-	-	378,798
Current assets	19,149	31,645	10,739	-	61,533
Current liabilities	-	4,262	-	-	4,262
	<b>393,685</b>	<b>31,645</b>	<b>10,739</b>	<b>-</b>	<b>436,070</b>

Designated Funds represent the funds set aside by the PCC for the purposes of:

	At 1st Jan	Income	Expenditure	Net
a Reserve funds (invested)	44,933	1,778	20,394	26,317
b General Maintenance fund (invested)	2,636	84	-	2,720
c Funds held by the church's sub-groups.	1,530	121,315	119,761	3,083
	<b>49,099</b>			<b>21,382</b>

Restricted Funds represent the funds set aside by the PCC for the purposes of:

	At 1st Jan	Income	Expenditure	Net
a Church Projects fund (donated for non-revenue items)	8,861		959	7,902
b Donations towards essential dome repairs	699			699
c Churchyard maintenance fund	1,184	809	1,555	438
d Fabric Fund (as (a) above)	1,700			1,700
	<b>12,444</b>	<b>809</b>	<b>2,514</b>	<b>10,739</b>

Funds (a) and (d) have been donated by Church families with specific instructions.

PAROCHIAL CHURCH COUNCIL OF ST PAUL'S, HOOTON

NOTES TO THE FINANCIAL STATEMENTS

For the year ended 31 December 2023

7	<b>DEBTORS</b>	2023	2022
		£	£
	Income tax recoverable	9,622.69	9,386.81
	Service fee reclaims (Interregnum)	945.00	314
	Other debtors (hall rent owing & prepay adjustment)	456	184
	Council tax owed for Oct - Dec occupancy	550	510
	Prepayments (Insurance premiums payable in advance)	7,100	6,870
		18,674	17,264

8	<b>LIABILITIES: AMOUNTS FALLING DUE WITHIN 1 YEAR:</b>	2,023	2,021
		£	£
	Church running costs (gas & electricity)	2,169	1,379
	Hall running costs (gas & electricity)	482	362
	Assigned fees owing	400	-
	Admin costs (nccountant, copier, gas & electricity)	1,211	1,600
		4,262	3,341

9	<b>TRANSFERS BETWEEN FUNDS / FUND CLOSURES</b>	Unrestricted Funds	Designated Funds	Restricted Funds	Endowment Funds
		£	£	£	£
	Payments from Magazine Account to PCC general account	-	-	-	-
	Closure of Parent & Toddler Account	-	-	-	-
	Closure of Social Account	-	-	-	-
	Transfer of funds from CBF deposit to main fund	20,000	- 20,000	-	-
		20,000	- 20,000	-	-

(A transfer from a designated Church Group fund to the general fund represents an amount donated by the individual group to the Church for the purpose of general use)

10 INDEPENDENT EXAMINER

The Independent Examiner's fee was £1,038.

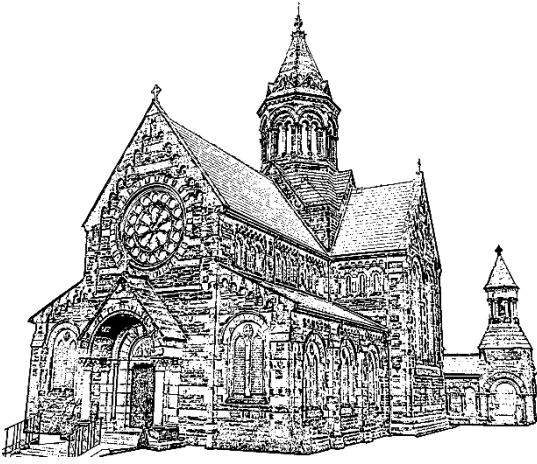
11 RELATED PARTY DISCLOSURES

There were no related third party transactions during this year.

---

# Accounts

---



**ST PAUL'S CHURCH HOOTON**  
**ANNUAL REPORT**  
**OF THE**  
**PAROCHIAL CHURCH COUNCIL**  
**For the year ending 31 December 2022**

**ADMINISTRATIVE INFORMATION**

St Paul's is situated on Chester Road in Little Sutton, a village eight miles from Chester. The ecclesiastical parish is made up of the three communities of Hooton, Childer Thornton and Little Sutton. The correspondence address for the parish is Hooton Vicarage, Chester Road, Little Sutton CH66 1QF. The Parochial Church Council (PCC) is a body corporate (PCC Powers Measure 1956, Church Representation Rules 2022) and a charity registered with the Charity Commission. Registered Charity no. 1134654

PCC members who served from 1 January 2021 until 31<sup>st</sup> December 2022 are:

**Ex-Officio Members**

**Incumbent:** (Vacancy)

**Church Wardens:** Alex Duffey  
Mark Holmes

**Deanery Synod Reps** Bryan McDonald  
Sarah Wood

Richard Soper (from 27<sup>th</sup> April)

**Elected Members** Peter Vaughan (*Reader Emeritus*)

Jan Barnett (*Assistant Warden*)

Lynne Bergin (*Secretary*)

Julie Bulley

David Busfield (*Treasurer and Vice Chair*)

Jo Byrne (from 27<sup>th</sup> April)

Kathleen Hitchmough (*Assistant Warden*)

Wendy Holmes

Viv Langan (from 27<sup>th</sup> April)

Jane Sheehy

Katie Sykes

Gwendoline Wale

## **STRUCTURE, GOVERNANCE AND MANAGEMENT**

Our ACM was held in April following Church and Government guidelines. Two nominations were received for the two positions of Church Wardens and they were elected unanimously to continue as Churchwardens for another year.

PCC members are appointed in accordance with the Church Representation Rules. Membership consists of *ex officio* members (as listed above) and members elected by those whose names are on the Electoral Roll or live in the Parish. All those who attend our services – and are members of the congregation – are encouraged to register on the Electoral Roll and stand for election to the PCC.

There were three vacancies on the PCC at the time of the ACM. One member was due for re-election, and two other nominations were received. All three were elected unanimously at the meeting.

We have three Deanery Synod Representatives and at the time of the AGM there was one vacancy. We received one nomination for this post and all three were elected unanimously at the meeting.

Restrictions had been lifted in 2022, and the PCC met six times in the year. The average attendance was 75%. All the meetings in 2022 were chaired by the Vice-Chair due to being in interregnum. The Standing Committee met once in 2022 (under Church Representation Rules 2011 M31/6).

PCC members are responsible for discussing and making decisions on all matters of concern and importance to the parish which includes finance, maintenance of the fabric of the church and grounds and social activities held by the church.

## **AIMS AND OBJECTIVES**

The parochial church council (PCC) works with the vicar to promote the mission of the church in the local context. This work is pastoral, evangelistic, social, and ecumenical in nature. We endeavour to communicate our faith and values through words and action, in the creation of a caring Christian community that is outward looking. As well as providing service to our community in a variety of situations we provide the church hall for various social needs and aspirations.

## **ACHIEVEMENTS AND PERFORMANCE**

At St Paul's we endeavour to come together to worship God and to build up a Christian community of loving service and care. 2022 has been another challenging year with the prolonged recovery from Coronavirus restrictions limiting our activities both in worship and social functions.

The statistics show that St Paul's Electoral Roll fell from 222 at the end of 2021 to 217 in 2022. There were 51 baptisms and seven weddings; 136 adults and children attended Easter and 87 attended Christmas. 32 funerals were held in church 2 at a crematorium and there were a total of 18 committals only or burial of ashes. Memorial Services to remember those who had died were held in May and October.

## **WORSHIP**

Attendance, severely depleted during the previous year due to Coronavirus restrictions recovered slowly and we were able to report an average Sunday attendance of 95 adults and children. Despite the absence of an incumbent for the entire year we were fortunate enough to be able to call on the services of retired clergy, others with PTO, and members of our own worship team so that all of our normal services were able to continue as normal.

## **WORKS, MAINTENANCE, HEALTH AND SAFETY**

Variouly known as the Monday Club or the Fabric Committee, there is a small group of energetic people led by Peter Jarvis who ensure that the church, church hall, churchyard and grounds are maintained in a satisfactory state to enable the ongoing activities of St Paul's to proceed in a safe and enjoyable manner. Activities include planned maintenance involving the testing of fire alarms, fire extinguishers, emergency lighting and security systems against a schedule, arrangement and supervision of routine maintenance by specialist contractors, and various other jobs, large and small on an "As & When" basis. This year the latter included refurbishment of the Gazebo by the Memorial

Lawn (including re-roofing), painting the fences, railings and handrails round the church and churchyard, replacement and upgrading the lights in the Hall Kitchen and all the toilets.

We are indebted to the Community Payback Team for their work in the churchyard throughout the year where they undertake most of the grass cutting, debris removal and clearance of the drainage ditch which runs down the entire north side as well as other tasks as they arise including assistance with maintaining the vicarage garden during vacancy.

## **PASTORAL CARE**

Pastoral care has been restricted this year due to the absence of any clergy or qualified pastoral workers but telephone contact was made from the Church Office whenever requested or following expressed concerns. Members of the PCC and other parishioners have all played their part in attempting to ensure the wellbeing of absentees and the chronically ill.

## **COMMUNICATION**

The Parish Office remained open throughout the year on its advertised 3 mornings weekly and voicemail checked regularly in between (although not so promptly as when the Vicarage was occupied). Our Parish Administrator Sarah Wood was very generous with her time with all email and telephone enquiries being dealt with in reasonable time. Sarah also continued to produce the Sunday Link and, assisted by David together with much appreciated submissions from members of the congregation, the Parish Magazine. Both of these have been invaluable in ensuring essential information is spread amongst the congregation and we continue to be thankful to the volunteers who deliver it around the parish. Our entries into the 'Achurchnearyou' webpage were kept up to date as were the various exterior noticeboards. St Paul's holds all appropriate copyright notices from CCLI and fully complies with GDPR legislation.

## **INITIATION AND NURTURE**

The candidates prepared in 2021 eventually underwent their Confirmation and we are grateful to the Vicar of St Barnabas for inviting us to share in their service.

## **SCHOOL CONNECTIONS**

Links with Little Sutton C of E School, Parklands, Rossmore and Sutton Green, built up over the years, have been maintained with all of them contributing posters or other artwork at various times during the year and there have been various school-run services in Church. We have two Foundation Governors at Little Sutton Church of England Primary School and a former Governor who regularly supports the children with reading and other activities to assist the Head Teacher Mrs Zoe Carciero,

During the interregnum the C of E School have conducted school lead services in church to mark the Christian Festivals at Easter, Harvest and two separate Christmas Service one for year 3/4 children and another for year 5/6 children.

## **SUNDAY CLUB**

The Sunday Club is led by Gwen Wale and a dedicated team of helpers who operate on a rota basis. Child Protection and Health and Safety protocols are in full operation and checked on at regular intervals.

It meets at 10.30am on Sunday morning in the church hall and through the year we have had an average of 8 children attending each week. We had 6 new families join us in September and at the end of the year 20 children were registered with us.

We generally follow the Lectionary, as we find that we don't have the same children every week. This is working very well but we do have 'Click', 'On the Way' and 'In Sight' to use as back-ups. The series of units take us through the Old and New Testaments covering all aspects of our Christian faith. All teaching material involves the children having fun with crafts and activities whilst learning.

We also take part in Family Worship on the second Sunday of each month with prayers, dramas, and readings. Parents have commented at how much their children have grown in confidence due to taking part in these services.

## **SOCIAL EVENTS**

The Events Planning Team organised a range of events during the year, re-introducing some old favourites following the lifting of Covid restrictions. As ever popular events centred around food and fellowship.

Highlights ranged from welcoming Bishop Mark to St Pauls' for a Sunday service followed by lots of cake, a curry evening, Harvest Lunch and afternoon tea and the successful return of the Jigsaw Players.

Regular walks saw our first mini pilgrimage from Aldford to St John's Church in Chester and the return of the popular fish and chip walk in Parkgate. To celebrate the Queen's Platinum Jubilee an afternoon tea was well attended. The 'Games Night' unearthed a competitive spirit across the generations of the congregation.

Major fundraising came from the Summer and Christmas Fairs, which provided much needed funds.

## **DEANERY SYNOD**

Bryan McDonald, Richard Soper and Sarah Wood are our parish representatives and there were several meetings during the year led by the Rural Dean Revd Beth Glover. Meetings were held at St Marys Eastham, St Thomas and All Saints Ellesmere Port, and the Chapel of the Holy Spirit / Parish Centre on Eastham Rake. The responses from all the Deanery events in the Diocese will then contribute towards the Bishops' work on setting a vision and direction for the Diocese.

## **ECUMENICAL PARTICIPATION**

Since Covid, our Interregnum and the closure of St George's United Reform Church the only ecumenical participation in 2022 was in March at St Mary of the Angels church for a service for the Women's World Day of Prayer

## **VOLUNTEERS**

All our volunteers are warmly thanked for their contribution to the work and ministry of St Paul's and we mention the Monday group who cover the items described in the maintenance section above, church cleaners, flower carers, refreshments providers, magazine deliverers and event organisers, through to those who help to tidy the chairs away after social functions.

## **FINANCIAL REPORT 2022**

The financial statements have been prepared in accordance with the accounting policies set out in the publication PCC Accountability 5<sup>th</sup> edition incorporating SORP 2015 issued by the Archbishops Council.

The entire year was spent in Interregnum, the Vicar having retired in November 2021 and a new Incumbent had not taken office before year-end. This situation brought numerous complications concerning the running of the church and for various reasons thwarted the recovery from Coronavirus restrictions affecting the two previous years. Encouragement came in increases in income from fund-raising events and hall rentals but these were cancelled by the usual increase in Parish Share, and increases in general administration costs resulting from the use of visiting clergy and recruitment.

Total resources expended for 2022 amounted to £118,806, an increase of £5036 on 2021 whilst income of £104,179 surpassed the 2021 figure by £5,979 but the net result is a loss of £14,627; however, we are looking towards a more stabilised future with confidence.

**PAROCHIAL CHURCH COUNCIL OF  
ST PAUL'S, HOOTON  
Registered Charity No. 1134654**

**FINANCIAL STATEMENTS  
For the year ended 31 December 2022**

Financial statements prepared on behalf of Hooton PCC

By D M Busfield

**Independent examiner's report to the trustees of The Parochial Church Council of St Paul's Hooton**

I report to the charity trustees on my examination of the accounts of The Parochial Church Council of St. Paul's Hooton for the year ended 31 December 2022.

**Responsibility and basis of report**

As the charity trustees you are responsible for the preparation of the accounts in accordance with the requirements of the Charities Act 2011 ('the Act).

I report in respect of my examination of the charity's accounts carried out under section 145 of the Act and in carrying out my examination I have followed all applicable Directions given by the Charity Commission under section 145(5)(b) of the Act.

**Independent examiner's statement**

I have completed my examination. I confirm that no material matters have come to my attention in connection with the examination giving me cause to believe that in any material respect:

1. Accounting records were not kept in respect of the charity as required by section 130 of the Act: or
2. The accounts do not accord with those records; or
3. The accounts do not comply with the applicable requirements concerning the form and content of accounts set out in the Charities (Accounts and Reports) Regulations 2008 other than any requirement that the accounts give a true and fair view which is not a matter considered as part of an independent examination.

I confirm that there are no other matters to which your attention should be drawn to enable a proper understanding of the accounts to be reached.

Suzanne Draper FCCA ACA  
ICAEW  
SB&P  
Oriel House  
2-8 Oriel Road  
Bootle  
Liverpool  
Merseyside  
L20 7EP

Date: .....

**PAROCHIAL CHURCH COUNCIL OF  
ST PAUL'S, HOOTON  
STATEMENT OF FINANCIAL ACTIVITIES  
For the year ended 31 December 2022**

	Note	Unrestricted Funds £	Designated Funds £	Restricted Funds £	Endowment Funds £	TOTAL FUNDS 2022	TOTAL FUNDS 2021
<b>INCOMING RESOURCES</b>							
Voluntary income	2(a)	51696.64	0.00	2505.00	0.00	54201.64	55634.86
Activities for Generating Funds	2(b)	17158.71	0.00	0.00	0.00	17158.71	11664.30
Income from Church Activities	2(c)	29793.00	1349.92	0.00	0.00	31142.92	29193.61
Income from Investments	2(d)	0.00	689.55	0.00	0.00	689.55	37.45
Other Incoming Resources	2(e)	985.77	0.00	0.00	0.00	985.77	1669.18
<b>TOTAL INCOMING RESOURCES</b>		<b>99634.12</b>	<b>2039.47</b>	<b>2505.00</b>	<b>0.00</b>	<b>104178.59</b>	<b>98199.40</b>
<b>RESOURCES EXPENDED</b>							
Grants and Charitable Donations	3(a)	285.93	0.00	0.00	0.00	285.93	110.25
Church Activities	3(b)	110536.18	618.50	1057.24	0.00	112211.92	107670.12
Costs of Generating Funds	3(c)	800.78	0.00	0.00	0.00	800.78	567.07
Costs of Governance and Support	3(d)	5507.93	0.00	0.00	0.00	5507.93	5422.86
<b>TOTAL RESOURCES EXPENDED</b>		<b>117130.82</b>	<b>618.50</b>	<b>1057.24</b>	<b>0.00</b>	<b>118806.56</b>	<b>113770.30</b>
<b>NET INCOMING (OUTGOING) RESOURCES</b>							
		-17496.70	1420.97	1447.76	0.00	-14627.97	-15570.90
Depreciation		0.00	0.00	0.00	0.00	0.00	0.00
<b>GAINS AND LOSSES ON INVESTMENTS</b>							
Realised		0.00	0.00	0.00	0.00	0.00	0.00
Unrealised		0.00	0.00	0.00	0.00	0.00	0.00
Capital adjustment		0.00	0.00	0.00	0.00	0.00	0.00
<b>TRANSFERS BETWEEN FUNDS</b>	9	12429.87	-12429.87	0.00	0.00	0.00	0.00
<b>NET MOVEMENT IN FUNDS</b>		<b>-5066.83</b>	<b>-11008.90</b>	<b>1447.76</b>	<b>0.00</b>	<b>-14627.97</b>	<b>-15570.90</b>
<b>BALANCE B/FWD AT 1 JANUARY</b>		<b>389635.43</b>	<b>60107.64</b>	<b>10995.91</b>	<b>0.00</b>	<b>460738.98</b>	<b>463945.39</b>
<b>BALANCES C/FWD AT 31 DECEMBER</b>		<b>384568.60</b>	<b>49098.74</b>	<b>12443.67</b>	<b>0.00</b>	<b>446111.01</b>	<b>448374.49</b>

**PAROCHIAL CHURCH COUNCIL OF  
ST PAUL'S, HOOTON  
BALANCE SHEET  
At 31 December 2022**

	Note	2022 £	2021 £
<b>FIXED ASSETS</b>			
Tangible fixed assets	5(a)	378798.00	378798.00
Investments	5(b)	0.00	0.00
		<u>378798.00</u>	<u>378798.00</u>
<b>CURRENT ASSETS</b>			
Debtors	7	17264.35	17001.69
CBF Church of England short term deposits		47568.77	56879.78
Cash at bank and in hand		5821.05	10455.18
		<u>70654.17</u>	<u>84336.65</u>
<b>LIABILITIES: AMOUNTS FALLING DUE WITHIN ONE YEAR</b>			
	8	3341.16	2395.67
<b>NET CURRENT ASSETS</b>		67313.01	81940.98
<b>NET ASSETS</b>		<u><u>446111.01</u></u>	<u><u>460738.98</u></u>
<b>FUNDS</b>			
Unrestricted	6	384568.60	389635.43
Designated		49098.74	60107.64
Restricted		12443.67	10995.91
Endowment		0.00	0.00
		<u>446111.01</u>	<u>460738.98</u>

Approved by the Parochial Church Council on 14th March 2023 and signed on its behalf by:

Revd Mark Turner  
Vicar of St Paul's Hooton

Mr Mark Stanley Holmes  
Church Warden

Mrs Alexandra Lucille Duffey  
Church Warden

**PAROCHIAL CHURCH COUNCIL OF ST PAUL'S, HOOTON**  
**NOTES TO THE FINANCIAL STATEMENTS**  
**For the year ended 31 December 2022**

**1. ACCOUNTING POLICIES**

The charity constitutes a public benefit entity as defined by FRS 102. The financial statements have been prepared in accordance with Accounting and Reporting by Charities: Statement of Recommended Practice applicable to charities preparing their accounts in accordance with the Financial Reporting Standard applicable in the UK and Republic of Ireland (FRS102) issued on 16 July 2014 (as updated through Update Bulletin 1 published on 2 February 2016), the Financial Reporting Standard applicable in the UK and Republic of Ireland (FRS102), the Charities Act 2011 and UK Generally Accepted Practice as it applies from 1 January 2015.

The charity has applied Update Bulletin 1 as published on 2 February 2016 and does not include a cash flow statement on the grounds that it is applying FRS 102 Section 1A.

The financial statements are prepared on a going concern basis under the historical cost convention.

**Funds**

General funds represent the funds of the PCC that are not subject to any restrictions regarding their use and are available for application on the general purposes of the PCC. Funds designated for a particular purpose by the PCC are also unrestricted. The financial statements include all transactions, assets and liabilities for which the PCC is responsible in law. They do not include the financial statements of church groups that owe their main affiliation to another body nor those that are informal gatherings of Church members.

Restricted funds are funds which are to be used in accordance with specific restrictions imposed by the donors.

**Incoming Resources**

All incoming resources are included in the Statement of Financial Activities (SOFA) when the charity is legally entitled to the income after any performance conditions have been met, the amount can be measured reliably and it is probable that the income will be received.

No amount is included in the financial statements for volunteer time in line with the SORP (FRS 102).

*Voluntary income and capital sources*

Collections are recognised when received by or on behalf of the PCC. Planned giving receivable under Gift Aid is recognised only when received. Tax recoverable on Gift Aid donations is recognised when the income is recognised. Funds raised by the fete, garden party and similar events are accounted for gross. Sales of books and magazines from the church bookstall are accounted for gross.

*Other income*

Rental income from the letting of church premises is recognised when the rental is due.

*Income from investments*

Dividends are accounted for when due and payable and interest entitlements are accounted for as they accrue. Tax recoverable on such income is recognised in the same accounting year.

**Resources used**

All expenditure is accounted for on an accruals basis and has been classified under headings that aggregate all costs related to the category. Expenditure is recognised when there is a legal or

constructive obligation to make payments to third parties, it is probable that the settlement will be required and the amount of the obligation can be measured reliably.

Support costs are those that assist the work of the charity but do not directly represent charitable activities and include office costs, governance costs, and administrative payroll costs. They are incurred directly in support of expenditure on the objects of the charity. Where support costs cannot be directly attributed to particular headings they have been allocated to cost of raising funds and expenditure on charitable activities on a basis consistent with use of the resources.

#### *Grants*

Grants and donations are accounted for when paid over, or when awarded, if that award creates a binding obligation on the PCC.

#### *Activities directly relating to the work of the Church*

The diocesan parish share is accounted for when due. Any parish share unpaid at the year end is provided for in these accounts as an operational (though not a legal) liability and is shown as a creditor in the Balance Sheet.

### **Fixed assets**

#### *Consecrated property and movable church furnishings*

Consecrated and beneficed property of any kind is excluded from the financial statements by s.10(2)(a) of the Charities Act 2011. All expenditure incurred in the year on consecrated or beneficed buildings, individual items under £1,000 or on the repair of moveable church furnishings acquired before 1 January 2000 is written off.

#### *Other fixtures, fittings and office equipment*

Equipment used within the church premises is depreciated on a straight line basis over four years to write off the cost of each asset over its expected useful life. Individual items of equipment with a purchase price of £1,000 or less are written off when the asset is acquired.

#### *Current assets*

Short-term deposits include cash held on deposit either with the CBF Church of England Funds or at the bank.

### **Tax**

The charity is an exempt charity within the meaning of schedule 3 of the Charities Act 2011.

### **Going Concern**

The financial statements have been prepared on a going concern basis as the trustees believe that no material uncertainties exist. The trustees have considered the level of funds held and the expected level of income and expenditure for 12 months from authorising these financial statements. The budgeted income and expenditure is sufficient with the level of reserves for the charity to be able to continue as a going concern

**PAROCHIAL CHURCH COUNCIL OF ST PAUL'S, HOOTON**

**NOTES TO THE FINANCIAL STATEMENTS**

**For the year ended 31 December 2022**

**2. INCOMING RESOURCES**

	Unrestricted Funds £	Designated Funds £	Restricted Funds £	Endowment Funds £	TOTAL FUNDS 2022	TOTAL FUNDS 2021
<b>2(a) Voluntary Income</b>						
Tax-efficient Planned Giving	25273.75	0.00	0.00	0.00	25273.75	25152.52
Other Planned Giving	5531.95	0.00	0.00	0.00	5531.95	6126.26
Collections (Offertory Plate)	6237.86	0.00	0.00	0.00	6237.86	5622.00
Occasional Gift Aid	3306.01	0.00	0.00	0.00	3306.01	20.00
Income tax recovered and recoverable	9386.81	0.00	0.00	0.00	9386.81	9191.35
Donations, including flower fund	1960.26	0.00	2505.00	0.00	4465.26	9522.73
	<u>51696.64</u>	<u>0.00</u>	<u>2505.00</u>	<u>0.00</u>	<u>54201.64</u>	<u>55634.86</u>
<b>2(b) Activities for Generating Funds</b>						
Fetes, bazaars, other fund raising events	6269.73	0.00	0.00	0.00	6269.73	5427.61
Church hall lettings, etc.	10888.98	0.00	0.00	0.00	10888.98	6236.69
	<u>17158.71</u>	<u>0.00</u>	<u>0.00</u>	<u>0.00</u>	<u>17158.71</u>	<u>11664.30</u>
<b>2(c) Income from Church Activities</b>						
Magazine	0.00	1177.09	0.00	0.00	1177.09	1200.54
Sub Group income	0.00	172.83	0.00	0.00	172.83	73.76
Fees	29793.00	0.00	0.00	0.00	29793.00	27919.31
	<u>29793.00</u>	<u>1349.92</u>	<u>0.00</u>	<u>0.00</u>	<u>31142.92</u>	<u>29193.61</u>
<b>2(d) Income from Investments</b>						
Dividends and interest	0.00	689.55	0.00	0.00	689.55	37.45
<b>2(e) Other Incoming Resources</b>						
Miscellaneous income	0.00	0.00	0.00	0.00	0.00	0.00
HMRC CJRS Furlough Grants	0.00	0.00	0.00	0.00	0.00	781.20
CBDF Energy grant	985.77	0.00	0.00	0.00	985.77	887.98
	<u>985.77</u>	<u>0.00</u>	<u>0.00</u>	<u>0.00</u>	<u>985.77</u>	<u>1669.18</u>
<b>TOTAL INCOMING RESOURCES</b>	<u>99634.12</u>	<u>2039.47</u>	<u>2505.00</u>	<u>0.00</u>	<u>104178.59</u>	<u>98199.40</u>

**3. RESOURCES EXPENDED**

	Unrestricted Funds £	Designated Funds £	Restricted Funds £	Endowment Funds £	TOTAL FUNDS 2022.00	TOTAL FUNDS 2022.00
<b>3(a) Grants</b>						
Missionary and charitable giving						
Home missions and other church societies	285.93		0.00	0.00	285.93	110.25
<b>3(b) Church Activities</b>						
Ministry: Diocesan Parish Share	69666.60	0.00	0.00	0.00	69666.60	68131.56
Clergy expenses	511.86	0.00	0.00	0.00	511.86	0.00
Visiting clergy	161.60	0.00	0.00	0.00	161.60	267.24
Church maintenance and running expenses	11801.72	0.00	0.00	0.00	11801.72	16151.65
Upkeep of churchyard	0.00	0.00	1057.24	0.00	1057.24	619.22
Parish magazine costs	0.00	504.58	0.00	0.00	504.58	189.79
Sub group costs	0.00	113.92	0.00	0.00	113.92	288.59
Church hall running costs	5804.70	0.00	0.00	0.00	5804.70	4814.47
Salaries, Wages and Honoraria	4824.00	0.00	0.00	0.00	4824.00	3746.35
Cost of services	2945.35	0.00	0.00	0.00	2945.35	1035.50
Costs of fees	12374.36	0.00	0.00	0.00	12374.36	9846.99
Vicarage (less donations to "Vicarage Fund")	2445.99	0.00	0.00	0.00	2445.99	2578.76
	<u>110536.18</u>	<u>618.50</u>	<u>1057.24</u>	<u>0.00</u>	<u>112211.92</u>	<u>107670.12</u>
<b>3(c) Costs of Generating Funds</b>						
Costs of fetes and other fund-raising	0.00	0.00	0.00	0.00	0.00	0.00
Weekly giving envelopes	140.78	0.00	0.00	0.00	140.78	137.07
Flower fund	660.00	0.00	0.00	0.00	660.00	430.00
	<u>800.78</u>	<u>0.00</u>	<u>0.00</u>	<u>0.00</u>	<u>800.78</u>	<u>567.07</u>
<b>3(d) Costs of Governance and Support</b>						
Office Equipment, Consumables & Maintenance	4447.93	0.00	0.00	0.00	4447.93	4524.86
Bank charges and loan interest	0.00	0.00	0.00	0.00	0.00	0.00
Independent Examiner	990.00	0.00	0.00	0.00	990.00	898.00
Deanery subscription	70.00	0.00	0.00	0.00	70.00	0.00
	<u>5507.93</u>	<u>0.00</u>	<u>0.00</u>	<u>0.00</u>	<u>5507.93</u>	<u>5422.86</u>
<b>TOTAL RESOURCES EXPENDED</b>	<u>117130.82</u>	<u>618.50</u>	<u>1057.24</u>	<u>0.00</u>	<u>118806.56</u>	<u>113770.30</u>

**PAROCHIAL CHURCH COUNCIL OF ST PAUL'S, HOOTON**

**NOTES TO THE FINANCIAL STATEMENTS**  
For the year ended 31 December 2022

4. STAFF COSTS	2022 £	2021 £
Salaries (including CJRS grant for 2021)	4824.00	4527.55
Income tax	0	0
Average number of employees	1	1

No employees received total employee benefits of more than £60,000

**5. FIXED ASSETS**

5(a) Tangible fixed assets	Freehold land and buildings £	Fixtures and fittings £	Total £
Cost at 1 Jan 2022	378798.00	0.00	378798.00
Additions at cost	0.00	0.00	0.00
Disposal	0.00	0.00	0.00
Cost at 31 Dec 2022	378798.00	0.00	378798.00
Depreciation at 1 Jan 2022	0.00	0.00	0.00
Charge for year	0.00	0.00	0.00
Depreciation on disposals	0.00	0.00	0.00
Depreciation at 31 December 2022	0.00	0.00	0.00
Net book value at 31 Dec 2022	378798.00	0.00	378798.00
Net book value at 31 Dec 2021	378798.00	0.00	378798.00

**6. ANALYSIS OF NET ASSETS BY FUND**

	Unrestricted Funds £	Designated Funds £	Restricted Funds £	Endowment Funds £	TOTAL FUNDS 2022 £
Fixed assets	378798.00	0.00	0.00	0.00	378798.00
Current assets	9066.01	49144.49	12443.67	0.00	70654.17
Current liabilities	-3341.16		0.00	0.00	-3341.16
	384522.85	49144.49	12443.67	0.00	446111.01

Designated Funds represent the funds set aside by the PCC for the purposes of:

	At 1st Jan	Income	Expenditure	£ Net
(a) Reserve funds (invested)	54312.74	34.66	10000.00	44932.84
(b) General Maintenance fund (invested)	2603.07	1.37	0.00	2635.93
(c) Funds held by the church's sub-groups.	3227.86	1275.72	2478.38	1529.97
				49098.74

Restricted Funds represent the funds set aside by the PCC for the purposes of:

(a) Church Projects fund (donated for non-revenue items)	8861.31	0.00	0.00	8861.31
(b) Donations towards essential dome repairs	698.82	0.00	0.00	698.82
(c) Churchyard maintenance fund	735.78	1505.00	1057.24	1183.54
(d) Fabric Fund (as (a) above)	700.00	1000.00	0.00	1700.00
	10995.91			12443.67

Funds (a) and (d) have been donated by Church families with specific instructions.

# PAROCHIAL CHURCH COUNCIL OF ST PAUL'S, HOOTON

## NOTES TO THE FINANCIAL STATEMENTS

For the year ended 31 December 2022

### 7. DEBTORS

	2022	2021
	£	£
Income tax recoverable	9386.81	9185.80
Service fee reclaims (Interregnum)	313.60	475.20
Other debtors (hall rent owing & prepay adjustment)	183.50	557.07
Council tax owed for Oct - Dec occupancy	510.34	537.85
Prepayments (Insurance premiums payable in advance)	6870.10	6245.77
	<u>17264.35</u>	<u>17001.69</u>

### 8. LIABILITIES: AMOUNTS FALLING DUE WITHIN 1 YEAR:

	2022	2021
	£	£
Church running costs (gas & electricity)	1378.79	1023.83
Hall running costs (gas & electricity)	361.89	240.18
Assigned fees owing		
Admin costs (accountant, copier, gas & electricity)	1600.48	1131.66
Other		
	<u>3341.16</u>	<u>2395.67</u>

### 9. TRANSFERS BETWEEN FUNDS / FUND CLOSURES

	Unrestricted Funds	Designated Funds	Restricted Funds	Endowment Funds
	£	£	£	£
Payments from Magazine Account to PCC general account	1000.00	-1000.00		
Closure of Parent & Toddler Account	667.65	-667.65		
Closure of Social Account	762.22	-762.22		
Transfer of funds from CBF deposit to main fund	10000.00	-10000.00		
	<u>12429.87</u>	<u>-12429.87</u>	<u>0.00</u>	<u>0.00</u>

(A transfer from a designated Church Group fund to the general fund represents an amount donated by the individual group to the Church for the purpose of general use)

### 10. INDEPENDENT EXAMINER

The Independent Examiner's fee was £990.

### 11. RELATED PARTY DISCLOSURES

There were no related third party transactions during this year.

**PAROCHIAL CHURCH COUNCIL OF  
ST PAUL'S, HOOTON  
Registered Charity No. 1134654**

**FINANCIAL STATEMENTS  
For the year ended 31 December 2022**

Financial statements prepared on behalf of Hooton PCC

By D M Busfield

**Independent examiner's report to the trustees of The Parochial Church Council of St Paul's Hooton**

I report to the charity trustees on my examination of the accounts of The Parochial Church Council of St. Paul's Hooton for the year ended 31 December 2022.

**Responsibility and basis of report**

As the charity trustees you are responsible for the preparation of the accounts in accordance with the requirements of the Charities Act 2011 ('the Act).

I report in respect of my examination of the charity's accounts carried out under section 145 of the Act and in carrying out my examination I have followed all applicable Directions given by the Charity Commission under section 145(5)(b) of the Act.

**Independent examiner's statement**

I have completed my examination. I confirm that no material matters have come to my attention in connection with the examination giving me cause to believe that in any material respect:

1. Accounting records were not kept in respect of the charity as required by section 130 of the Act: or
2. The accounts do not accord with those records; or
3. The accounts do not comply with the applicable requirements concerning the form and content of accounts set out in the Charities (Accounts and Reports) Regulations 2008 other than any requirement that the accounts give a true and fair view which is not a matter considered as part of an independent examination.

I confirm that there are no other matters to which your attention should be drawn to enable a proper understanding of the accounts to be reached.

Suzanne Draper FCCA ACA  
ICAEW  
SB&P  
Oriel House  
2-8 Oriel Road  
Bootle  
Liverpool  
Merseyside  
L20 7EP

Date: .....

**PAROCHIAL CHURCH COUNCIL OF  
ST PAUL'S, HOOTON  
STATEMENT OF FINANCIAL ACTIVITIES  
For the year ended 31 December 2022**

	Note	Unrestricted Funds £	Designated Funds £	Restricted Funds £	Endowment Funds £	TOTAL FUNDS 2022	TOTAL FUNDS 2021
<b>INCOMING RESOURCES</b>							
Voluntary income	2(a)	51696.64	0.00	2505.00	0.00	54201.64	55634.86
Activities for Generating Funds	2(b)	17158.71	0.00	0.00	0.00	17158.71	11664.30
Income from Church Activities	2(c)	29793.00	1349.92	0.00	0.00	31142.92	29193.61
Income from Investments	2(d)	0.00	689.55	0.00	0.00	689.55	37.45
Other Incoming Resources	2(e)	985.77	0.00	0.00	0.00	985.77	1669.18
<b>TOTAL INCOMING RESOURCES</b>		<b>99634.12</b>	<b>2039.47</b>	<b>2505.00</b>	<b>0.00</b>	<b>104178.59</b>	<b>98199.40</b>
<b>RESOURCES EXPENDED</b>							
Grants and Charitable Donations	3(a)	285.93	0.00	0.00	0.00	285.93	110.25
Church Activities	3(b)	110536.18	618.50	1057.24	0.00	112211.92	107670.12
Costs of Generating Funds	3(c)	800.78	0.00	0.00	0.00	800.78	567.07
Costs of Governance and Support	3(d)	5507.93	0.00	0.00	0.00	5507.93	5422.86
<b>TOTAL RESOURCES EXPENDED</b>		<b>117130.82</b>	<b>618.50</b>	<b>1057.24</b>	<b>0.00</b>	<b>118806.56</b>	<b>113770.30</b>
<b>NET INCOMING (OUTGOING) RESOURCES</b>							
		-17496.70	1420.97	1447.76	0.00	-14627.97	-15570.90
Depreciation		0.00	0.00	0.00	0.00	0.00	0.00
<b>GAINS AND LOSSES ON INVESTMENTS</b>							
Realised		0.00	0.00	0.00	0.00	0.00	0.00
Unrealised		0.00	0.00	0.00	0.00	0.00	0.00
Capital adjustment		0.00	0.00	0.00	0.00	0.00	0.00
<b>TRANSFERS BETWEEN FUNDS</b>	9	12429.87	-12429.87	0.00	0.00	0.00	0.00
<b>NET MOVEMENT IN FUNDS</b>		<b>-5066.83</b>	<b>-11008.90</b>	<b>1447.76</b>	<b>0.00</b>	<b>-14627.97</b>	<b>-15570.90</b>
<b>BALANCE B/FWD AT 1 JANUARY</b>		<b>389635.43</b>	<b>60107.64</b>	<b>10995.91</b>	<b>0.00</b>	<b>460738.98</b>	<b>463945.39</b>
<b>BALANCES C/FWD AT 31 DECEMBER</b>		<b>384568.60</b>	<b>49098.74</b>	<b>12443.67</b>	<b>0.00</b>	<b>446111.01</b>	<b>448374.49</b>

**PAROCHIAL CHURCH COUNCIL OF  
ST PAUL'S, HOOTON  
BALANCE SHEET  
At 31 December 2022**

	Note	2022 £	2021 £
<b>FIXED ASSETS</b>			
Tangible fixed assets	5(a)	378798.00	378798.00
Investments	5(b)	0.00	0.00
		<u>378798.00</u>	<u>378798.00</u>
<b>CURRENT ASSETS</b>			
Debtors	7	17264.35	17001.69
CBF Church of England short term deposits		47568.77	56879.78
Cash at bank and in hand		5821.05	10455.18
		<u>70654.17</u>	<u>84336.65</u>
<b>LIABILITIES: AMOUNTS FALLING DUE WITHIN ONE YEAR</b>			
	8	3341.16	2395.67
<b>NET CURRENT ASSETS</b>		67313.01	81940.98
<b>NET ASSETS</b>		<u><u>446111.01</u></u>	<u><u>460738.98</u></u>
<b>FUNDS</b>			
Unrestricted	6	384568.60	389635.43
Designated		49098.74	60107.64
Restricted		12443.67	10995.91
Endowment		0.00	0.00
		<u>446111.01</u>	<u>460738.98</u>

Approved by the Parochial Church Council on 14th March 2023 and signed on its behalf by:

Revd Mark Turner  
Vicar of St Paul's Hooton

Mr Mark Stanley Holmes  
Church Warden

Mrs Alexandra Lucille Duffey  
Church Warden

**PAROCHIAL CHURCH COUNCIL OF ST PAUL'S, HOOTON**  
**NOTES TO THE FINANCIAL STATEMENTS**  
**For the year ended 31 December 2022**

**1. ACCOUNTING POLICIES**

The charity constitutes a public benefit entity as defined by FRS 102. The financial statements have been prepared in accordance with Accounting and Reporting by Charities: Statement of Recommended Practice applicable to charities preparing their accounts in accordance with the Financial Reporting Standard applicable in the UK and Republic of Ireland (FRS102) issued on 16 July 2014 (as updated through Update Bulletin 1 published on 2 February 2016), the Financial Reporting Standard applicable in the UK and Republic of Ireland (FRS102), the Charities Act 2011 and UK Generally Accepted Practice as it applies from 1 January 2015.

The charity has applied Update Bulletin 1 as published on 2 February 2016 and does not include a cash flow statement on the grounds that it is applying FRS 102 Section 1A.

The financial statements are prepared on a going concern basis under the historical cost convention.

**Funds**

General funds represent the funds of the PCC that are not subject to any restrictions regarding their use and are available for application on the general purposes of the PCC. Funds designated for a particular purpose by the PCC are also unrestricted. The financial statements include all transactions, assets and liabilities for which the PCC is responsible in law. They do not include the financial statements of church groups that owe their main affiliation to another body nor those that are informal gatherings of Church members.

Restricted funds are funds which are to be used in accordance with specific restrictions imposed by the donors.

**Incoming Resources**

All incoming resources are included in the Statement of Financial Activities (SOFA) when the charity is legally entitled to the income after any performance conditions have been met, the amount can be measured reliably and it is probable that the income will be received.

No amount is included in the financial statements for volunteer time in line with the SORP (FRS 102).

*Voluntary income and capital sources*

Collections are recognised when received by or on behalf of the PCC. Planned giving receivable under Gift Aid is recognised only when received. Tax recoverable on Gift Aid donations is recognised when the income is recognised. Funds raised by the fete, garden party and similar events are accounted for gross. Sales of books and magazines from the church bookstall are accounted for gross.

*Other income*

Rental income from the letting of church premises is recognised when the rental is due.

*Income from investments*

Dividends are accounted for when due and payable and interest entitlements are accounted for as they accrue. Tax recoverable on such income is recognised in the same accounting year.

**Resources used**

All expenditure is accounted for on an accruals basis and has been classified under headings that aggregate all costs related to the category. Expenditure is recognised when there is a legal or

constructive obligation to make payments to third parties, it is probable that the settlement will be required and the amount of the obligation can be measured reliably.

Support costs are those that assist the work of the charity but do not directly represent charitable activities and include office costs, governance costs, and administrative payroll costs. They are incurred directly in support of expenditure on the objects of the charity. Where support costs cannot be directly attributed to particular headings they have been allocated to cost of raising funds and expenditure on charitable activities on a basis consistent with use of the resources.

#### *Grants*

Grants and donations are accounted for when paid over, or when awarded, if that award creates a binding obligation on the PCC.

#### *Activities directly relating to the work of the Church*

The diocesan parish share is accounted for when due. Any parish share unpaid at the year end is provided for in these accounts as an operational (though not a legal) liability and is shown as a creditor in the Balance Sheet.

### **Fixed assets**

#### *Consecrated property and movable church furnishings*

Consecrated and beneficed property of any kind is excluded from the financial statements by s.10(2)(a) of the Charities Act 2011. All expenditure incurred in the year on consecrated or beneficed buildings, individual items under £1,000 or on the repair of moveable church furnishings acquired before 1 January 2000 is written off.

#### *Other fixtures, fittings and office equipment*

Equipment used within the church premises is depreciated on a straight line basis over four years to write off the cost of each asset over its expected useful life. Individual items of equipment with a purchase price of £1,000 or less are written off when the asset is acquired.

#### *Current assets*

Short-term deposits include cash held on deposit either with the CBF Church of England Funds or at the bank.

### **Tax**

The charity is an exempt charity within the meaning of schedule 3 of the Charities Act 2011.

### **Going Concern**

The financial statements have been prepared on a going concern basis as the trustees believe that no material uncertainties exist. The trustees have considered the level of funds held and the expected level of income and expenditure for 12 months from authorising these financial statements. The budgeted income and expenditure is sufficient with the level of reserves for the charity to be able to continue as a going concern

**PAROCHIAL CHURCH COUNCIL OF ST PAUL'S, HOOTON**

**NOTES TO THE FINANCIAL STATEMENTS**

**For the year ended 31 December 2022**

**2. INCOMING RESOURCES**

	Unrestricted Funds £	Designated Funds £	Restricted Funds £	Endowment Funds £	TOTAL FUNDS 2022	TOTAL FUNDS 2021
<b>2(a) Voluntary Income</b>						
Tax-efficient Planned Giving	25273.75	0.00	0.00	0.00	25273.75	25152.52
Other Planned Giving	5531.95	0.00	0.00	0.00	5531.95	6126.26
Collections (Offertory Plate)	6237.86	0.00	0.00	0.00	6237.86	5622.00
Occasional Gift Aid	3306.01	0.00	0.00	0.00	3306.01	20.00
Income tax recovered and recoverable	9386.81	0.00	0.00	0.00	9386.81	9191.35
Donations, including flower fund	1960.26	0.00	2505.00	0.00	4465.26	9522.73
	<u>51696.64</u>	<u>0.00</u>	<u>2505.00</u>	<u>0.00</u>	<u>54201.64</u>	<u>55634.86</u>
<b>2(b) Activities for Generating Funds</b>						
Fetes, bazaars, other fund raising events	6269.73	0.00	0.00	0.00	6269.73	5427.61
Church hall lettings, etc.	10888.98	0.00	0.00	0.00	10888.98	6236.69
	<u>17158.71</u>	<u>0.00</u>	<u>0.00</u>	<u>0.00</u>	<u>17158.71</u>	<u>11664.30</u>
<b>2(c) Income from Church Activities</b>						
Magazine	0.00	1177.09	0.00	0.00	1177.09	1200.54
Sub Group income	0.00	172.83	0.00	0.00	172.83	73.76
Fees	29793.00	0.00	0.00	0.00	29793.00	27919.31
	<u>29793.00</u>	<u>1349.92</u>	<u>0.00</u>	<u>0.00</u>	<u>31142.92</u>	<u>29193.61</u>
<b>2(d) Income from Investments</b>						
Dividends and interest	0.00	689.55	0.00	0.00	689.55	37.45
<b>2(e) Other Incoming Resources</b>						
Miscellaneous income	0.00	0.00	0.00	0.00	0.00	0.00
HMRC CJRS Furlough Grants	0.00	0.00	0.00	0.00	0.00	781.20
CBDF Energy grant	985.77	0.00	0.00	0.00	985.77	887.98
	<u>985.77</u>	<u>0.00</u>	<u>0.00</u>	<u>0.00</u>	<u>985.77</u>	<u>1669.18</u>
<b>TOTAL INCOMING RESOURCES</b>	<u>99634.12</u>	<u>2039.47</u>	<u>2505.00</u>	<u>0.00</u>	<u>104178.59</u>	<u>98199.40</u>

**3. RESOURCES EXPENDED**

	Unrestricted Funds £	Designated Funds £	Restricted Funds £	Endowment Funds £	TOTAL FUNDS 2022.00	TOTAL FUNDS 2022.00
<b>3(a) Grants</b>						
Missionary and charitable giving						
Home missions and other church societies	285.93		0.00	0.00	285.93	110.25
<b>3(b) Church Activities</b>						
Ministry: Diocesan Parish Share	69666.60	0.00	0.00	0.00	69666.60	68131.56
Clergy expenses	511.86	0.00	0.00	0.00	511.86	0.00
Visiting clergy	161.60	0.00	0.00	0.00	161.60	267.24
Church maintenance and running expenses	11801.72	0.00	0.00	0.00	11801.72	16151.65
Upkeep of churchyard	0.00	0.00	1057.24	0.00	1057.24	619.22
Parish magazine costs	0.00	504.58	0.00	0.00	504.58	189.79
Sub group costs	0.00	113.92	0.00	0.00	113.92	288.59
Church hall running costs	5804.70	0.00	0.00	0.00	5804.70	4814.47
Salaries, Wages and Honoraria	4824.00	0.00	0.00	0.00	4824.00	3746.35
Cost of services	2945.35	0.00	0.00	0.00	2945.35	1035.50
Costs of fees	12374.36	0.00	0.00	0.00	12374.36	9846.99
Vicarage (less donations to "Vicarage Fund")	2445.99	0.00	0.00	0.00	2445.99	2578.76
	<u>110536.18</u>	<u>618.50</u>	<u>1057.24</u>	<u>0.00</u>	<u>112211.92</u>	<u>107670.12</u>
<b>3(c) Costs of Generating Funds</b>						
Costs of fetes and other fund-raising	0.00	0.00	0.00	0.00	0.00	0.00
Weekly giving envelopes	140.78	0.00	0.00	0.00	140.78	137.07
Flower fund	660.00	0.00	0.00	0.00	660.00	430.00
	<u>800.78</u>	<u>0.00</u>	<u>0.00</u>	<u>0.00</u>	<u>800.78</u>	<u>567.07</u>
<b>3(d) Costs of Governance and Support</b>						
Office Equipment, Consumables & Maintenance	4447.93	0.00	0.00	0.00	4447.93	4524.86
Bank charges and loan interest	0.00	0.00	0.00	0.00	0.00	0.00
Independent Examiner	990.00	0.00	0.00	0.00	990.00	898.00
Deanery subscription	70.00	0.00	0.00	0.00	70.00	0.00
	<u>5507.93</u>	<u>0.00</u>	<u>0.00</u>	<u>0.00</u>	<u>5507.93</u>	<u>5422.86</u>
<b>TOTAL RESOURCES EXPENDED</b>	<u>117130.82</u>	<u>618.50</u>	<u>1057.24</u>	<u>0.00</u>	<u>118806.56</u>	<u>113770.30</u>

**PAROCHIAL CHURCH COUNCIL OF ST PAUL'S, HOOTON**

**NOTES TO THE FINANCIAL STATEMENTS  
For the year ended 31 December 2022**

<b>4. STAFF COSTS</b>	2022 £	2021 £
Salaries (including CJRS grant for 2021)	4824.00	4527.55
Income tax	0	0
Average number of employees	1	1

No employees received total employee benefits of more than £60,000

**5. FIXED ASSETS**

5(a) Tangible fixed assets	Freehold land and buildings £	Fixtures and fittings £	Total £
Cost at 1 Jan 2022	378798.00	0.00	378798.00
Additions at cost	0.00	0.00	0.00
Disposal	0.00	0.00	0.00
Cost at 31 Dec 2022	<u>378798.00</u>	<u>0.00</u>	<u>378798.00</u>
Depreciation at 1 Jan 2022	0.00	0.00	0.00
Charge for year	0.00	0.00	0.00
Depreciation on disposals	0.00	0.00	0.00
Depreciation at 31 December 2022	<u>0.00</u>	<u>0.00</u>	<u>0.00</u>
Net book value at 31 Dec 2022	<u><u>378798.00</u></u>	<u><u>0.00</u></u>	<u><u>378798.00</u></u>
Net book value at 31 Dec 2021	<u><u>378798.00</u></u>	<u><u>0.00</u></u>	<u><u>378798.00</u></u>

**6. ANALYSIS OF NET ASSETS BY FUND**

	Unrestricted Funds £	Designated Funds £	Restricted Funds £	Endowment Funds £	TOTAL FUNDS 2022 £
Fixed assets	378798.00	0.00	0.00	0.00	378798.00
Current assets	9066.01	49144.49	12443.67	0.00	70654.17
Current liabilities	-3341.16		0.00	0.00	-3341.16
	<u>384522.85</u>	<u>49144.49</u>	<u>12443.67</u>	<u>0.00</u>	<u>446111.01</u>

Designated Funds represent the funds set aside by the PCC for the purposes of:

	At 1st Jan	Income	Expenditure	£ Net
(a) Reserve funds (invested)	54312.74	34.66	10000.00	44932.84
(b) General Maintenance fund (invested)	2603.07	1.37	0.00	2635.93
(c) Funds held by the church's sub-groups.	3227.86	1275.72	2478.38	1529.97
				<u>49098.74</u>

Restricted Funds represent the funds set aside by the PCC for the purposes of:

(a) Church Projects fund (donated for non-revenue items)	8861.31	0.00	0.00	8861.31
(b) Donations towards essential dome repairs	698.82	0.00	0.00	698.82
(c) Churchyard maintenance fund	735.78	1505.00	1057.24	1183.54
(d) Fabric Fund (as (a) above)	<u>700.00</u>	1000.00	0.00	<u>1700.00</u>
	10995.91			12443.67

Funds (a) and (d) have been donated by Church families with specific instructions.

# PAROCHIAL CHURCH COUNCIL OF ST PAUL'S, HOOTON

## NOTES TO THE FINANCIAL STATEMENTS

For the year ended 31 December 2022

### 7. DEBTORS

	2022	2021
	£	£
Income tax recoverable	9386.81	9185.80
Service fee reclaims (Interregnum)	313.60	475.20
Other debtors (hall rent owing & prepay adjustment)	183.50	557.07
Council tax owed for Oct - Dec occupancy	510.34	537.85
Prepayments (Insurance premiums payable in advance)	6870.10	6245.77
	<u>17264.35</u>	<u>17001.69</u>

### 8. LIABILITIES: AMOUNTS FALLING DUE WITHIN 1 YEAR:

	2022	2021
	£	£
Church running costs (gas & electricity)	1378.79	1023.83
Hall running costs (gas & electricity)	361.89	240.18
Assigned fees owing		
Admin costs (accountant, copier, gas & electricity)	1600.48	1131.66
Other		
	<u>3341.16</u>	<u>2395.67</u>

### 9. TRANSFERS BETWEEN FUNDS / FUND CLOSURES

	Unrestricted Funds	Designated Funds	Restricted Funds	Endowment Funds
	£	£	£	£
Payments from Magazine Account to PCC general account	1000.00	-1000.00		
Closure of Parent & Toddler Account	667.65	-667.65		
Closure of Social Account	762.22	-762.22		
Transfer of funds from CBF deposit to main fund	10000.00	-10000.00		
	<u>12429.87</u>	<u>-12429.87</u>	<u>0.00</u>	<u>0.00</u>

(A transfer from a designated Church Group fund to the general fund represents an amount donated by the individual group to the Church for the purpose of general use)

### 10. INDEPENDENT EXAMINER

The Independent Examiner's fee was £990.

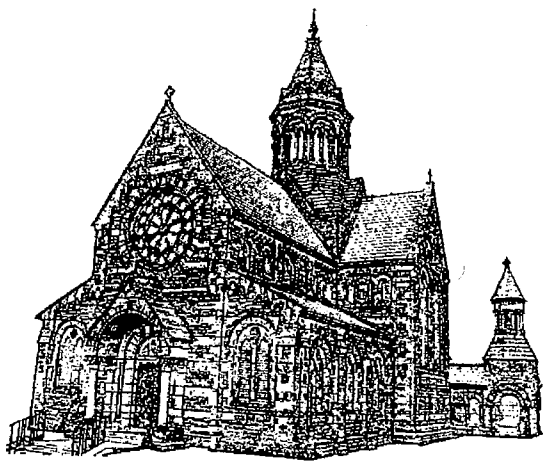
### 11. RELATED PARTY DISCLOSURES

There were no related third party transactions during this year.

---

# Accounts

---



**ST PAUL'S CHURCH HOOTON**  
**ANNUAL REPORT**  
**OF THE**  
**PAROCHIAL CHURCH COUNCIL**  
**For the year ending 31 December 2021**

**ADMINISTRATIVE INFORMATION**

St Paul's is situated on Chester Road in Little Sutton, a village eight miles from Chester. The ecclesiastical parish is made up of the three communities of Hooton, Childer Thornton and Little Sutton. The correspondence address for the parish is The Vicarage, Chester Road, Little Sutton CH66 1QF. The Parochial Church Council (PCC) is a body corporate (PCC Powers Measure 1956, Church Representation Rules 2020) and a charity registered with the Charity Commission. Registered Charity no. 1134654

PCC members who have served from 1 January 2021 until the date this report was approved are:

**Ex-Officio Members**

**Incumbent:** Rev Keith Howard (*Chair*) (Until November)

**Wardens:** Alex Duffey  
Mark Holmes

**Reader (Emeritus):** Peter Vaughan

**Deanery Synod Reps** Judith Howard (until November)

Bryan McDonald

Sarah Wood

**Elected Members** Jan Barnett (*Assistant Warden*)

Lynne Bergin (*Secretary*)

Julie Bulley

David Busfield (*Treasurer*) (*and Vice Chair from September*)

Carmel Edwards (until July)

Anne Hartley (until May)

Kathleen Hitchmough (*Assistant Warden*)

Wendy Holmes

Viv Langan (*Assistant Warden*) (Until May)

Jane Sheehy

Katie Sykes

Gwendoline Wale

## **STRUCTURE, GOVERNANCE AND MANAGEMENT**

PCC members are appointed in accordance with the Church Representation Rules. Membership consists of *ex officio* members (as listed above) and members elected by those whose names are on the Electoral Roll or live in the Parish. All those who attend our services – and are members of the congregation – are encouraged to register on the Electoral Roll and stand for election to the PCC.

At the ACM in May, three nominations were received for the two positions of Church Warden and following a vote Alex Duffy and Mark Holmes were elected. Two members expressed the wish to stand down from the PCC and 4 members were due for re-election. 4 nominations were received and all were accepted for election to the PCC.

PCC members are responsible for making decisions on all matters of general concern and importance to the parish, including finance. Due to the restrictions the PCC was only able to meet five times during the year although with an average attendance of 91%. The Standing Committee exists under Church Representation Rules to conduct urgent business between PCC meetings and met 3 times during the year. The main issues under discussion were the restrictions brought about by Coronavirus rules and again the downturn in church finances. Meetings of the Events Planning committee were restricted during the early part of the year but were held on 4 occasions in the second part.

## **AIMS AND OBJECTIVES**

The parochial church council (PCC) works with the vicar to promote the mission of the church in the local context. This work is pastoral, evangelistic, social and ecumenical in nature. The PCC is responsible for the church building, the churchyard around it and the church hall. We endeavour to communicate our faith and values through words and action, in the creation of a caring Christian community that is outward looking. As well as providing service to our community in a variety of situations we provide the church hall for various social needs and aspirations.

## **ACHIEVEMENTS AND PERFORMANCE**

At St Paul's we endeavour to come together to worship God and to build up a Christian community of loving service and care. 2021 has been another challenging year with Coronavirus restrictions limiting our activities both in worship and social activities.

The statistics show that St Paul's Electoral Roll rose from 219 at the end of 2020 to 222 in 2021. There were 27 baptisms and three weddings; 99 adults and children attended Harvest and 146 attended Christmas. There were 9 weddings during the year, all but 2 of which, due to the restrictions were held in the latter part of the year. 32 funerals were held in church and 7 at a crematorium or external cemetery. Memorial Services to remember those who have died were held in June and October. In between the periods of restriction we were able to hold the Summer Fair in July and the Christmas Fair in December, both making valuable contributions to Church Funds.

## **WORSHIP**

The restrictions meant that we were unable to sing during worship until August but we were able to maintain our normal service patterns on Sundays and midweek. Attendance patterns were better than those following the closure in 2020 but still significantly reduced compared with previous years.

The retirement of our Vicar at the beginning of November had a considerable effect on our worship particularly over the Christmas period but we are thankful for the contribution made by the retired clergy we were able to call on in order to maintain most of our normal activities, and who we will continue to call on in 2022 during our period of Interregnum. Members of our own worship team have been called upon to take on additional responsibilities and have responded with enthusiasm.

## **WORKS, MAINTENANCE, HEALTH AND SAFETY**

The Fabric Committee comprises a small group of energetic men and women led by Peter Jarvis. It exists to ensure that the church, church hall, churchyard and grounds are maintained in a satisfactory state to enable the ongoing activities of St Paul's to proceed in a safe and enjoyable manner. The Coronavirus restrictions in various parts of the year had some restrictive effects on ongoing projects but all the essential items were completed. Planned maintenance included the testing of fire alarms, fire extinguishers, emergency lighting and security systems against a schedule and routine maintenance by specialist contractors arranged and supervised. Gutters and downspouts were cleared as necessary and the Christmas chandeliers for our candlelight services installed and removed at appropriate times. Unplanned but necessary tasks include replacing both internal and external light units as required and repairs to external benches etc. Various small maintenance tasks were undertaken as routine but unexpected items included re-glazing of the church hall front door following vandalism and the felling and removal of a very large tree in front of the church partly brought down by the high winds in December.

Work on the east face of the dome to remove invading tree roots and repair the affected stonework was completed as planned and our architect took advantage of the scaffolding to conduct a close-up inspection of the rest of the structure and estimates for further repairs that will be required in the near future were obtained.

We are indebted to the Community Payback Team for their work in the churchyard throughout the year where they undertake most of the grass cutting, debris removal and clearance of the drainage ditch which runs down the entire north side as well as other tasks as they arise.

## **PASTORAL CARE**

Pastoral care has again been difficult this year due to both the restrictions and the reluctance of many older parishioners to receive home visits although again great use was made of telephone contact but towards the end of the year following the Vicar's retirement resources became rather over-stretched.

## **COMMUNICATION**

The Parish Office was closed for the first three months of the year and Sarah Wood our Office Administrator was again furloughed during that time with all email and telephone enquiries being dealt with by the vicar and his wife who also continued to produce the Sunday Link. The Link has been invaluable in these difficult times in ensuring essential information is spread amongst the congregation as has the Parish Magazine which was published 10 times in 2021 also produce by Keith and Judith Howard. And we continue to be thankful to the volunteers who deliver it around the parish. Our entries into the 'Achurchnearyou' webpage were kept up to date as were the various exterior noticeboards. St Paul's holds all appropriate copyright notices from CCLI and fully complies with GDPR legislation.

## **INITIATION AND NURTURE**

The candidates preparing for Confirmation in 2020 are still awaiting a service but it is hoped they may be successful early in 2022. There were 27 baptisms during the year, a considerable improvement on the 14 in 2020 but still not up to previous levels.

## **SCHOOL CONNECTIONS**

Links with Little Sutton C of E School, Parklands, Rossmore and Sutton Green, built up over the years, have been maintained with all of them contributing posters or other artwork at various times during the year and there have been various school-run services in Church. Links with Little Sutton CofE School were strengthened with regular visits by the Vicar but the highlight was a visit to the school by Bishop Mark in November. The head teacher played a major role in our Crib Service at Christmas and many of the children attend our Sunday Club in addition to the thriving 'St Paul's Club' which Gwen Wale runs in the school.

## **SUNDAY CLUB**

The Sunday Club is led by Gwen Wale and a dedicated team of helpers who operate on a rota basis. Child Protection and Health and Safety protocols are in full operation and checked on at regular intervals.

Sunday Club meets at 10.30am on Sunday morning in the church hall. Due to Covid there was no Sunday Club this year until 20<sup>th</sup> June. Since being back they have averaged 10 children attending each week and 10 new families joined in September. At present, they are using teaching schemes 'Click,' 'On the Way' and with smaller groups they use 'In Sight'. The series of units take them through the Old and New Testaments covering all aspects of our Christian faith. All teaching material involves the children having fun with crafts and activities whilst learning. The Sunday Club also takes part in Family Worship on the second Sunday of each month with prayers, dramas, and readings. Parents have commented at how much their children have grown in confidence due to taking part.

## **SOCIAL EVENTS**

The programme of social events during the year was again severely curtailed due to Coronavirus restrictions with the first being the Summer Fair at the beginning of July. Despite concerns and rigorous compliance with social separation we still managed to make £2450. The planned Golf tournament was cancelled at the last minute but thanks to a generous donation from the Golf Club and the raffle we had been selling tickets for in the weeks before, we raised £1288. An Italian Evening in November produced £421 and the Christmas Fare in December £1268.

## **DEANERY SYNOD**

This met once in 2021 at Eastham. Judith Howard resigned from the Synod on the retirement of Vicar Keith on 7<sup>th</sup> November.

## **ECUMENICAL PARTICIPATION**

There has been little ecumenical activity during the year due mainly to restrictions; one of the Churches in our village group closed and another is passing through a change in clergy.

## **VOLUNTEERS**

All our volunteers are warmly thanked for their contribution to the work and ministry of St Paul's in this very challenging and difficult year starting from certain members of the Monday group who spend more time at St Paul's than at home, through church cleaners, refreshments providers, magazine deliverers and event organisers, through to those who help to tidy the chairs away after social functions. We are also indebted to the Community Payback Team and other individuals for their work in the churchyard throughout the year.

## **FINANCIAL REPORT 2021**

The financial statements have been prepared in accordance with the accounting policies set out in the publication PCC Accountability 5<sup>th</sup> edition incorporating SORP 2015 issued by the Archbishops Council. Coronavirus restrictions limited the use of church buildings for large parts of the year resulting in the cessation of many fund-raising events and uncertainty concerning the possibility of further lockdowns or even Plan B precautions had a severe impact on hall rentals and fund-raising activities. As last year, costs were cut wherever possible but major outgoings such as the Parish Share, insurances and copier rental could not be reduced so that significant and damaging losses have been recorded for the second year in succession. Total resources expended for 2021 was £113,770, an increase of £5204 on 2020 mostly relating to repairs to the dome. Incoming resources amounted to £98,199 with increases in all the primary sources (giving, fund-raising, hall rents and fees) surpassing the 2020 figure by £12,988 but all of them came in the last third of the year. The net result is a loss of £15,571 but we are looking towards the future with confidence.

**PAROCHIAL CHURCH COUNCIL OF  
ST PAUL'S, HOOTON  
Registered Charity No. 1134654**

**FINANCIAL STATEMENTS  
For the year ended 31 December 2021**

Financial statements prepared on behalf of Hooton PCC

By D M Busfield

**Independent examiner's report to the trustees of The Parochial Church Council of St Paul's Hooton**

I report to the charity trustees on my examination of the accounts of The Parochial Church Council of St. Paul's Hooton for the year ended 31 December 2021.

**Responsibility and basis of report**

As the charity trustees you are responsible for the preparation of the accounts in accordance with the requirements of the Charities Act 2011 ('the Act).

I report in respect of my examination of the charity's accounts carried out under section 145 of the Act and in carrying out my examination I have followed all applicable Directions given by the Charity Commission under section 145(5)(b) of the Act.

**Independent examiner's statement**

I have completed my examination. I confirm that no material matters have come to my attention in connection with the examination giving me cause to believe that in any material respect:

1. Accounting records were not kept in respect of the charity as required by section 130 of the Act: or
2. The accounts do not accord with those records; or
3. The accounts do not comply with the applicable requirements concerning the form and content of accounts set out in the Charities (Accounts and Reports) Regulations 2008 other than any requirement that the accounts give a true and fair view which is not a matter considered as part of an independent examination.

I confirm that there are no other matters to which your attention should be drawn to enable a proper understanding of the accounts to be reached.



Suzanne Draper FCCA ACA  
ICAEW  
SB&P  
Oriel House  
2-8 Oriel Road  
Bootle  
Liverpool  
Merseyside  
L20 7EP

Date: 5/4/2022

**PAROCHIAL CHURCH COUNCIL OF  
ST PAUL'S, HOOTON  
STATEMENT OF FINANCIAL ACTIVITIES  
For the year ended 31 December 2021**

	Note	Unrestricted Funds £	Designated Funds £	Restricted Funds £	Endowment Funds £	TOTAL FUNDS 2021	TOTAL FUNDS 2020
<b>INCOMING RESOURCES</b>							
Voluntary income	2(a)	49401.04	0.00	6233.82	0.00	55634.86	51683.86
Activities for Generating Funds	2(b)	11664.30	0.00	0.00	0.00	11664.30	5679.57
Income from Church Activities	2(c)	27919.31	1274.30	0.00	0.00	29193.61	25696.81
Income from Investments	2(d)	0.00	37.45	0.00	0.00	37.45	375.46
Other Incoming Resources	2(e)	1669.18	0.00	0.00	0.00	1669.18	1775.80
<b>TOTAL INCOMING RESOURCES</b>		<b>90653.83</b>	<b>1311.75</b>	<b>6233.82</b>	<b>0.00</b>	<b>98199.40</b>	<b>85211.50</b>
<b>RESOURCES EXPENDED</b>							
Grants and Charitable Donations	3(a)	110.25	0.00	0.00	0.00	110.25	0.00
Church Activities	3(b)	101292.52	478.38	5899.22	0.00	107670.12	103072.06
Costs of Generating Funds	3(c)	567.07	0.00	0.00	0.00	567.07	401.41
Costs of Governance and Support	3(d)	5422.86	0.00	0.00	0.00	5422.86	5092.84
<b>TOTAL RESOURCES EXPENDED</b>		<b>107392.70</b>	<b>478.38</b>	<b>5899.22</b>	<b>0.00</b>	<b>113770.30</b>	<b>108566.31</b>
<b>NET INCOMING (OUTGOING) RESOURCES</b>							
		-16738.87	833.37	334.60	0.00	-15570.90	-23354.81
Depreciation		0.00	0.00	0.00	0.00	0.00	0.00
<b>GAINS AND LOSSES ON INVESTMENTS</b>							
Realised		0.00	0.00	0.00	0.00	0.00	0.00
Unrealised		0.00	0.00	0.00	0.00	0.00	0.00
Capital adjustment		0.00	0.00	0.00	0.00	0.00	0.00
<b>TRANSFERS BETWEEN FUNDS</b>	9	17000.00	-17000.00	0.00	0.00	0.00	0.00
<b>NET MOVEMENT IN FUNDS</b>		<b>261.13</b>	<b>-16166.63</b>	<b>334.60</b>	<b>0.00</b>	<b>-15570.90</b>	<b>-23354.81</b>
<b>BALANCE B/FWD AT 1 JANUARY</b>		<b>389374.30</b>	<b>76274.27</b>	<b>10661.31</b>	<b>0.00</b>	<b>476309.88</b>	<b>499664.69</b>
<b>BALANCES C/FWD AT 31 DECEMBER</b>		<b>389635.43</b>	<b>60107.64</b>	<b>10995.91</b>	<b>0.00</b>	<b>460738.98</b>	<b>476309.88</b>

**PAROCHIAL CHURCH COUNCIL OF  
ST PAUL'S, HOOTON  
BALANCE SHEET  
At 31 December 2021**

	Note	2021 £	2020 £
<b>FIXED ASSETS</b>			
Tangible fixed assets	5(a)	378798.00	378798.00
Investments	5(b)	0.00	0.00
		<u>378798.00</u>	<u>378798.00</u>
<b>CURRENT ASSETS</b>			
Debtors	7	17001.69	14178.53
CBF Church of England short term deposits		56879.78	71843.75
Cash at bank and in hand		10455.18	14267.73
		<u>84336.65</u>	<u>100290.01</u>
<b>LIABILITIES: AMOUNTS FALLING DUE WITHIN ONE YEAR</b>			
	8	2395.67	2778.13
<b>NET CURRENT ASSETS</b>		81940.98	97511.88
<b>NET ASSETS</b>		<u><u>460738.98</u></u>	<u><u>476309.88</u></u>
<b>FUNDS</b>			
Unrestricted	6	389635.43	389374.30
Designated		60107.64	76274.27
Restricted		10995.91	10661.31
Endowment		0.00	0.00
		<u>460738.98</u>	<u>476309.88</u>

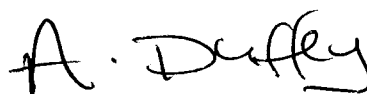
Approved by the Parochial Church Council on 4th April 2022 and signed on its behalf by:



David Malcolm Busfield  
Vice-Chair of the PCC



Mr Mark Stanley Holmes  
Church Warden



Mrs Alexandra Lucille Duffey  
Church Warden

**PAROCHIAL CHURCH COUNCIL OF ST PAUL'S, HOOTON**  
**NOTES TO THE FINANCIAL STATEMENTS**  
**For the year ended 31 December 2021**

**1. ACCOUNTING POLICIES**

The charity constitutes a public benefit entity as defined by FRS 102. The financial statements have been prepared in accordance with Accounting and Reporting by Charities: Statement of Recommended Practice applicable to charities preparing their accounts in accordance with the Financial Reporting Standard applicable in the UK and Republic of Ireland (FRS102) issued on 16 July 2014 (as updated through Update Bulletin 1 published on 2 February 2016), the Financial Reporting Standard applicable in the UK and Republic of Ireland (FRS102), the Charities Act 2011 and UK Generally Accepted Practice as it applies from 1 January 2015.

The charity has applied Update Bulletin 1 as published on 2 February 2016 and does not include a cash flow statement on the grounds that it is applying FRS 102 Section 1A.

The financial statements are prepared on a going concern basis under the historical cost convention.

**Funds**

General funds represent the funds of the PCC that are not subject to any restrictions regarding their use and are available for application on the general purposes of the PCC. Funds designated for a particular purpose by the PCC are also unrestricted. The financial statements include all transactions, assets and liabilities for which the PCC is responsible in law. They do not include the financial statements of church groups that owe their main affiliation to another body nor those that are informal gatherings of Church members.

Restricted funds are funds which are to be used in accordance with specific restrictions imposed by the donors.

**Incoming Resources**

All incoming resources are included in the Statement of Financial Activities (SOFA) when the charity is legally entitled to the income after any performance conditions have been met, the amount can be measured reliably and it is probable that the income will be received.

No amount is included in the financial statements for volunteer time in line with the SORP (FRS 102).

*Voluntary income and capital sources*

Collections are recognised when received by or on behalf of the PCC. Planned giving receivable under Gift Aid is recognised only when received. Tax recoverable on Gift Aid donations is recognised when the income is recognised. Funds raised by the fete, garden party and similar events are accounted for gross. Sales of books and magazines from the church bookstall are accounted for gross.

*Other income*

Rental income from the letting of church premises is recognised when the rental is due.

*Income from investments*

Dividends are accounted for when due and payable and interest entitlements are accounted for as they accrue. Tax recoverable on such income is recognised in the same accounting year.

**Resources used**

All expenditure is accounted for on an accruals basis and has been classified under headings that aggregate all costs related to the category. Expenditure is recognised when there is a legal or

constructive obligation to make payments to third parties, it is probable that the settlement will be required and the amount of the obligation can be measured reliably.

Support costs are those that assist the work of the charity but do not directly represent charitable activities and include office costs, governance costs, and administrative payroll costs. They are incurred directly in support of expenditure on the objects of the charity. Where support costs cannot be directly attributed to particular headings they have been allocated to cost of raising funds and expenditure on charitable activities on a basis consistent with use of the resources.

#### *Grants*

Grants and donations are accounted for when paid over, or when awarded, if that award creates a binding obligation on the PCC.

#### *Activities directly relating to the work of the Church*

The diocesan parish share is accounted for when due. Any parish share unpaid at the year end is provided for in these accounts as an operational (though not a legal) liability and is shown as a creditor in the Balance Sheet.

### **Fixed assets**

#### *Consecrated property and movable church furnishings*

Consecrated and beneficed property of any kind is excluded from the financial statements by s.10(2)(a) of the Charities Act 2011. All expenditure incurred in the year on consecrated or beneficed buildings, individual items under £1,000 or on the repair of moveable church furnishings acquired before 1 January 2000 is written off.

#### *Other fixtures, fittings and office equipment*

Equipment used within the church premises is depreciated on a straight line basis over four years to write off the cost of each asset over its expected useful life. Individual items of equipment with a purchase price of £1,000 or less are written off when the asset is acquired.

#### *Current assets*

Short-term deposits include cash held on deposit either with the CBF Church of England Funds or at the bank.

### **Tax**

The charity is an exempt charity within the meaning of schedule 3 of the Charities Act 2011.

### **Going Concern**

The financial statements have been prepared on a going concern basis as the trustees believe that no material uncertainties exist. The trustees have considered the level of funds held and the expected level of income and expenditure for 12 months from authorising these financial statements. The budgeted income and expenditure is sufficient with the level of reserves for the charity to be able to continue as a going concern

PAROCHIAL CHURCH COUNCIL OF ST PAUL'S, HOOTON

NOTES TO THE FINANCIAL STATEMENTS

For the year ended 31 December 2021

2. INCOMING RESOURCES

	Unrestricted Funds £	Designated Funds £	Restricted Funds £	Endowment Funds £	TOTAL FUNDS 2021	TOTAL FUNDS 2020
<b>2(a) Voluntary Income</b>						
Tax-efficient Planned Giving	25152.52	0.00	0.00	0.00	25152.52	23086.65
Other Planned Giving	6126.26	0.00	0.00	0.00	6126.26	7545.37
Collections (Offertory Plate)	5622.00	0.00	0.00	0.00	5622.00	4113.03
Occasional Gift Aid	20.00	0.00	0.00	0.00	20.00	315.00
Income tax recovered and recoverable	9191.35	0.00	0.00	0.00	9191.35	7771.66
Donations, including flower fund	3288.91	0.00	6233.82	0.00	9522.73	8852.15
	49401.04	0.00	6233.82	0.00	55634.86	51683.86
<b>2(b) Activities for Generating Funds</b>						
Fetes, bazaars, other fund raising events	5427.61	0.00	0.00	0.00	5427.61	2736.50
Church hall lettings, etc.	6236.69	0.00	0.00	0.00	6236.69	2943.07
	11664.30	0.00	0.00	0.00	11664.30	5679.57
<b>2(c) Income from Church Activities</b>						
Magazine	0.00	1200.54	0.00	0.00	1200.54	921.86
Sub Group income	0.00	73.76	0.00	0.00	73.76	247.95
Fees	27919.31	0.00	0.00	0.00	27919.31	24427.00
	27919.31	1274.30	0.00	0.00	29193.61	25696.81
<b>2(d) Income from Investments</b>						
Dividends and interest	0.00	37.45	0.00	0.00	37.45	375.46
<b>2(e) Other Incoming Resources</b>						
Miscellaneous income	0.00	0.00	0.00	0.00	0.00	0.00
HMRC CJRS Furlough Grants	781.20	0.00	0.00	0.00	781.20	1747.80
General	887.98	0.00	0.00	0.00	887.98	28.00
	1669.18	0.00	0.00	0.00	1669.18	1775.80
<b>TOTAL INCOMING RESOURCES</b>	<b>90653.83</b>	<b>1311.75</b>	<b>6233.82</b>	<b>0.00</b>	<b>98199.40</b>	<b>85211.50</b>

3. RESOURCES EXPENDED

	Unrestricted Funds £	Designated Funds £	Restricted Funds £	Endowment Funds £	TOTAL FUNDS 2021.00	TOTAL FUNDS 2021.00
<b>3(a) Grants</b>						
Missionary and charitable giving						
Home missions and other church societies	110.25		0.00	0.00	110.25	0.00
<b>3(b) Church Activities</b>						
Ministry: Diocesan Parish Share	68131.56	0.00	0.00	0.00	68131.56	67624.32
Clergy expenses	0.00	0.00	0.00	0.00	0.00	0.00
Visiting clergy	267.24	0.00	0.00	0.00	267.24	0.00
Church maintenance and running expenses	10871.65	0.00	5280.00	0.00	16151.65	13241.15
Upkeep of churchyard	0.00	0.00	619.22	0.00	619.22	709.37
Parish magazine costs	0.00	189.79	0.00	0.00	189.79	250.00
Sub group costs	0.00	288.59	0.00	0.00	288.59	82.90
Church hall running costs	4814.47	0.00	0.00	0.00	4814.47	4580.88
Salaries, Wages and Honoraria	3746.35	0.00	0.00	0.00	3746.35	3651.30
Cost of services	1035.50	0.00	0.00	0.00	1035.50	674.50
Costs of fees	9846.99	0.00	0.00	0.00	9846.99	9380.17
Vicarage	2578.76	0.00	0.00	0.00	2578.76	2877.47
	101292.52	478.38	5899.22	0.00	107670.12	103072.06
<b>3(c) Costs of Generating Funds</b>						
Costs of fetes and other fund-raising	0.00	0.00	0.00	0.00	0.00	0.00
Weekly giving envelopes	137.07	0.00	0.00	0.00	137.07	191.41
Flower fund	430.00	0.00	0.00	0.00	430.00	210.00
	567.07	0.00	0.00	0.00	567.07	401.41
<b>3(d) Costs of Governance and Support</b>						
Office Equipment, Consumables & Maintenance	4524.86	0.00	0.00	0.00	4524.86	4153.84
Bank charges and loan interest	0.00	0.00	0.00	0.00	0.00	0.00
Independent Examiner	898.00	0.00	0.00	0.00	898.00	864.00
Deanery subscription	0.00	0.00	0.00	0.00	0.00	75.00
	5422.86	0.00	0.00	0.00	5422.86	5092.84
<b>TOTAL RESOURCES EXPENDED</b>	<b>107392.70</b>	<b>478.38</b>	<b>5899.22</b>	<b>0.00</b>	<b>113770.30</b>	<b>108566.31</b>

**PAROCHIAL CHURCH COUNCIL OF ST PAUL'S, HOOTON**

**NOTES TO THE FINANCIAL STATEMENTS**

For the year ended 31 December 2021

<b>4. STAFF COSTS</b>	2021 £	2020 £
Salaries (including CJRS grant for 2020)	3746.35	3651.30
Income tax	0	0
Average number of employees	1	1

No employees received total employee benefits of more than £60,000

**5. FIXED ASSETS**

5(a) Tangible fixed assets	Freehold land and buildings £	Fixtures and fittings £	Total £
Cost at 1 Jan 2021	378798.00	0.00	378798.00
Additions at cost	0.00	0.00	0.00
Disposal	0.00	0.00	0.00
Cost at 31 Dec 2021	<u>378798.00</u>	<u>0.00</u>	<u>378798.00</u>
Depreciation at 1 Jan 2021	0.00	0.00	0.00
Charge for year	0.00	0.00	0.00
Depreciation on disposals	0.00	0.00	0.00
Depreciation at 31 December 2021	<u>0.00</u>	<u>0.00</u>	<u>0.00</u>
Net book value at 31 Dec 2021	<u><u>378798.00</u></u>	<u><u>0.00</u></u>	<u><u>378798.00</u></u>
Net book value at 31 Dec 2020	<u><u>378798.00</u></u>	<u><u>0.00</u></u>	<u><u>378798.00</u></u>

**6. ANALYSIS OF NET ASSETS BY FUND**

	Unrestricted Funds £	Designated Funds £	Restricted Funds £	Endowment Funds £	TOTAL FUNDS 2021 £
Fixed assets	378798.00	0.00	0.00	0.00	378798.00
Current assets	13233.10	60107.64	10995.91	0.00	84336.65
Current liabilities	-2395.67		0.00	0.00	-2395.67
	<u>389635.43</u>	<u>60107.64</u>	<u>10995.91</u>	<u>0.00</u>	<u>460738.98</u>

Designated Funds represent the funds set aside by the PCC for the purposes of:

	At 1st Jan	Income	Expenditure	£ Net
(a) Reserve funds (invested)	69243.42	34.66	15000.00	54278.08
(b) General Maintenance fund (invested)	2600.33	1.37	0.00	2601.70
(c) Funds held by the church's sub-groups.	4430.52	1275.72	2478.38	<u>3227.86</u>
				60107.64

Restricted Funds represent the funds set aside by the PCC for the purposes of:

(a) Church Projects fund (donated for non-revenue items)	8861.31	0.00	0.00	8861.31
(b) Donations towards essential dome repairs	1800.00	4178.82	5280.00	698.82
(c) Churchyard maintenance fund	0.00	1355.00	619.22	735.78
(d) Fabric Fund (as (a) above)	0.00	700.00	0.00	<u>700.00</u>
				10995.91

Funds (a) and (d) have been donated by Church families with specific instructions.

**PAROCHIAL CHURCH COUNCIL OF ST PAUL'S, HOOTON**

**NOTES TO THE FINANCIAL STATEMENTS**

For the year ended 31 December 2021

**7. DEBTORS**

	2021	2020
	£	£
Income tax recoverable		
Service fee reclaims (Interregnum)	9185.80	7771.66
Other debtors (funeral fees and hall rent owing)	475.20	0.00
Repayment of vicarage council tax	557.07	98.00
Prepayments (Insurance premiums payable in advance)	537.85	
	<u>6245.77</u>	<u>6308.87</u>
	17001.69	14178.53

**8. LIABILITIES: AMOUNTS FALLING DUE WITHIN 1 YEAR:**

	2021	2020
	£	£
Church running costs (gas & electricity)	1023.83	1120.28
Hall running costs (gas & electricity)	240.18	289.90
Assigned fees owing		422.00
Admin costs (accountant, copier, gas & electricity)	1131.66	
Other		<u>945.95</u>
	<u>2395.67</u>	<u>2778.13</u>

**9. TRANSFERS BETWEEN FUNDS / FUND CLOSURES**

	Unrestricted Funds £	Designated Funds £	Restricted Funds £	Endowment Funds £
Payments from Magazine Account to PCC general account	2000.00	-2000.00		
Transfer of funds from CBF deposit to main fund	15000.00	-15000.00		
	<u>17000.00</u>	<u>-17000.00</u>	0.00	0.00

A transfer from a designated Church Group fund to the general fund represents an amount donated by the individual group to the Church for the purpose of general use)

**10. INDEPENDENT EXAMINER**

The Independent Examiner's fee was £898.

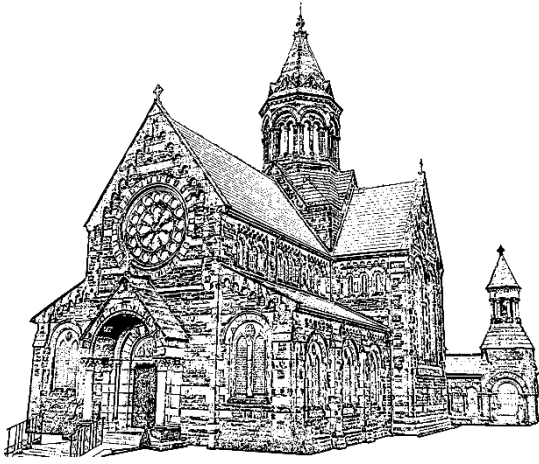
**11. RELATED PARTY DISCLOSURES**

There were no related party transactions during this year.

---

# Accounts

---



# ST PAUL'S CHURCH HOOTON

## 2020 REPORT

### OF THE

## PAROCHIAL CHURCH COUNCIL

#### ADMINISTRATIVE INFORMATION

St Paul's is situated on Chester Road in Little Sutton, a village eight miles from Childer Thornton and Little Sutton. The correspondence address for the parish is The Vicarage, Chester Road, Little Sutton CH66 1QF. The Parochial Church Council (PCC) is a body corporate (PCC Powers Measure 1956, Church Representation Rules 2006) and a charity registered with the Charity Commission. Registered Charity no. 1134654

PCC members who have served from 1 January 2020 until the date this report was approved are:

#### Ex-Officio Members

**Incumbent:** Rev Keith Howard (*Chairman*)  
**Wardens:** Alex Duffey (from September)  
Mark Holmes (from September)  
Jan Barnett (until September)  
Vivian Langan (until September)

**Reader:** Peter Vaughan

**Deanery Synod Reps** Judith Howard  
Bryan McDonald  
Sarah Wood

#### Elected Members

Lynne Bergin (*Secretary*)  
David Busfield (*Treasurer*)  
Julie Bulley (from September)  
Carmel Edwards  
Anne Hartley  
Kathleen Hitchmough (*Assistant Warden*)  
Wendy Holmes  
Jane Sheehy  
Katie Sykes (from September)  
Gwendoline Wale  
Jan Barnett (*Assistant Warden*) (from September)  
Viv Langan (*Assistant Warden*) (from September)  
Mark Holmes (until September)  
Alexandra Duffey (until September)  
Nessie Allsop (until September)  
Barbara Edwards (until September)  
Lyndon Marshall (until September)

#### STRUCTURE, GOVERNANCE AND MANAGEMENT

PCC members are appointed in accordance with the Church Representation Rules. Membership consists of *ex officio* members (as listed above) and members elected by those whose names are on the Electoral Roll or live in the Parish. All those who attend our services – and are members of the congregation – are encouraged to register on the Electoral Roll and stand for election to the PCC. PCC members are responsible for making decisions on all matters of general concern and importance to the parish, including finance. The PCC met five times during the year and the three big issues were firstly, concern over the plant growth on the dome; secondly the enforcement of Coronavirus rules and thirdly the downturn in church finances. The Standing Committee exists to transact the business of the PCC between meetings. The Events Planning committee met early in the year but there were no later meetings because of the pandemic.

The General Data Protection Regulations (GDPR) are fully complied with by the PCC.

#### AIMS AND OBJECTIVES

The parochial church council (PCC) works with the vicar to promote the mission of the church in the local context. This work is pastoral, evangelistic, social and ecumenical in nature. The PCC is responsible for the church building, the

churchyard around it and the church hall. We endeavour to communicate our faith and values through word and action, in the creation of a caring Christian community that is outward looking. As well as providing service to our community in a variety of situations we provide the church hall for various social needs and aspirations.

## **ACHIEVEMENTS AND PERFORMANCE**

At St Paul's we endeavour to come together to worship God and to build up a Christian community of loving service and care. 2020 has been a very challenging year with Coronavirus causing suspension of worship services for almost four months and the closure of the church hall for social occasions for most of the year but it was used by a slimmer's group and two commercial toddler groups when permitted. There was trouble with the church dome and but being unable to put it right due to the restrictions. There was a marked reduction in overall income. However we continued to meet for worship as and when the rules permitted; we have been able to raise the funds needed for the dome repairs and the work will be completed in the spring of 2021.

The statistics show that St Paul's Electoral Roll rose from 213 at the end of 2019 to 219 in 2020. There were 14 baptisms and three weddings; 89 adults and children attended Harvest and 103 attended Christmas. A Memorial Service to remember those who have died was held before the November lockdown. A most enjoyable and successful golf tournament was made possible with the help of our local golf club in September.

Social concern for others was shown less by activities this year and more by fundraising when possible. £530 was raised for Forum Housing working with young homeless people. In addition to foodstuffs given to the local Food Bank earlier in the year £275 was raised for them at Harvest. The Children's Society boxes raised £739.40.

## **WORSHIP**

In 2020 St Paul's was profoundly affected by the Coronavirus crisis and the two lengthy periods when all churches had to suspend worship (March – June & November). We did not opt for online services as it was felt significant numbers of our worshippers would not have access to it. The policy adopted was that when the rules permitted we met for worship and fellowship in a time of great anxiety and isolation for many people. When rules permitted there were two Sunday services and a midweek Communion. At other times the church was open when only private prayer was allowed. At all times worship was conducted in accordance with Coronavirus social distancing and hand sanitising rules.

There were no Easter or Whit services this year. In the period July to October there was an average of 56 worshippers a week. Harvest was attended by 93 adults and children. Following the second lockdown the level of fear and uncertainty reduced the number of worshippers to 38 on an average Sunday. However 103 adults and children attended the Crib Service and Christmas communion. There were in addition two Services of Light held in place of the usual Advent carol service which were attended by 117 parishioners.

Restrictions on church music and singing have resulted in the church choir playing a heightened role in worship, and they have been much appreciated.

## **WORKS, MAINTENANCE, HEALTH AND SAFETY**

The Fabric Committee is led by Bill Allsop and Peter Jarvis. Due to Coronavirus restrictions over the last nine months of the year the full schedule of work could not be carried out. Fire alarms, fire extinguishers, emergency lighting and lightning conductor were all tested and approved. However the church hall has been closed for all social activities for the best part of nine months and testing of portable electrical equipment in the hall and the heating boiler still need to be done. At the beginning of the year a control panel on the church heating boiler was replaced. A pressing problem developed inside and outside the church dome with the growth of vegetation on the roof causing the dislodging of small amounts of masonry and ingress of water. Permission for repair work has been granted and should be done in the spring of 2021.

Outside the church building benches have been refurbished, various shrubs and saplings have been cut down and the team have when lockdown conditions permitted kept the area around the church cleared and tidied. Until July the Coronavirus rules did not allow us to attend to the churchyard. From July until the end of the year considerable help has been received with clearing ditches and grass-cutting from the Community Payback Team. We are also very grateful to individual volunteers who have helped maintain the churchyard.

## **Pastoral care**

Pastoral care has been difficult this year due to the restrictions and the inability to meet directly with people. There has been a big emphasis on phoning round. When appropriate the vicar has taken Communion to the housebound. There was one Memorial Service this year, and parishioners were prayed for in services.

## **Communication**

The Parish Office was closed for half the year (February – June, then again in November) and Sarah Wood our Office Administrator was furloughed during these times. All enquiries by phone and email during that time were dealt with by the vicar and Judith Howard. Communication with the church community and beyond was maintained and in some ways creatively expanded to take into consideration these difficult times. The Vicar was unable to meet people directly and used the telephone more extensively especially to contact people living on their own. A new email 'Parish Link' was produced with items of devotion and news to keep everyone informed. This had a circulation of about 70. The Parish Magazine was published 10 times in 2020 and we are most grateful to the increased number of volunteers who

delivered it around the parish. It is produced by Keith and Judith Howard with Viv Langan as treasurer. The 'A church near you' webpage was kept up to date as were the various exterior noticeboards. The Sunday Link continued to appear and for half the year took the place of liturgical booklets in worship.

St Paul's hold all appropriate copyright notices from CCLI and fully complies with GDPR legislation about data protection.

### **Initiation and nurture**

In 2020 there were three candidates preparing for Confirmation but the Confirmation service had to be cancelled due to Coronavirus. During the year there were 14 baptisms (this compares with 48 in 2019).

### **School connections**

Well established links with Little Sutton C of E School, Parklands, Rossmore and Sutton Green, built up over the years, were difficult to maintain due to the schools being closed to visitors. Mothering Sunday celebrations with the schools were cancelled with very little notice due to Coronavirus. However links with Little Sutton school were enhanced by several seasonal online addresses by the Vicar; the participation of the head teacher in our Service of Light at Christmas; and pupils writing cards and letters to parishioners, who in turn wrote back to the children. It was one of the most positive things to come out of 2020. Gwen Wale also ran a thriving 'St Paul's Club' in the school for much of the year.

### **Tuesday Toddlers and Sunday Club**

Gwen Wale is our safeguarding co-ordinator and the PCC are fully informed of our children's policy. Tuesday Toddlers is led by Judith Howard and the Sunday Club by Gwen Wale. Both groups met in January and February averaging 10 participants in each group. Unfortunately they were not able to meet for the rest of the year.

### **Social Events**

Due to Coronavirus restrictions the programme of social events was severely curtailed this year. At the beginning of the year the Events Planning committee put on a walk in Cheshire and a very pleasurable Italian Evening. In September the Vicar and planning committee with the help of the local Ian Woosnam Golf Academy put together a very popular and successful golf tournament which raised £2,419.50 for church funds. For most of the year the church hall was closed to social events but was used for part of the time by 'Slimmers' World' and two commercial toddler groups.

### **Women's' Fellowship**

The Fellowship met once at the beginning of the year for a Beetle Drive in the Hall.

### **Deanery Synod**

This met once in 2020 at Thornton Hough. At the September AGM three members of St Paul's were elected to represent us in Synod: Judith Howard, Bryan McDonald and Sarah Wood.

### **Ecumenical participation**

St Paul's hosted a Service of Prayer for Christian Unity in January which was followed by refreshments. In February there was an ecumenical monthly prayer meeting but the programme for the rest of the year was cancelled as the other church remained closed. Instead material for the prayer meetings was circulated by email to the different churches. Peter Vaughan is our representative on Churches Together. St Paul's hosted the local Women's World Day of Prayer in early March with some children from Little Sutton School taking part.

### **Volunteers**

All volunteers are warmly thanked for their contribution to the work and ministry of St Paul's in this very challenging and difficult year. Special thanks to the Community Payback Team and individual volunteers for their work in the churchyard over the summer and autumn.

## **FINANCIAL REPORT 2020**

The financial statements have been prepared in accordance with the accounting policies set out in the publication PCC Accountability 5<sup>th</sup> edition issued by the Archbishops Council. Closure of the church buildings and cessation of fund raising activities brought about by Coronavirus restrictions severely depleted our income and whilst costs were cut wherever possible, major outgoings such as the Parish Share, insurances and inspections could not be reduced so that considerable and damaging losses have been recorded. Total turnover for 2020 was £75,831 a decrease of £26,483 on 2019. Planned Giving and Plate Collections etc. were down £4,867 on the previous year. Donations were reduced by £1,412 and reclaimable tax £1,293. Fund Raising from events was reduced by £3,745 but the major losses were Hall Lettings (-£6,043) and Occasional Fees (-£9,072).

The cost reductions we were able to apply enabled savings of £6,334, despite yet another major repair to the heating system, but our efforts were insignificant against expenditure for the year totalling £99,186, incorporating the parish share figure of £67,624. This resulted in an overall loss of £23,355.

(This page is intentionally blank)

**PAROCHIAL CHURCH COUNCIL OF  
ST PAUL'S, HOOTON  
Registered Charity No. 1134654**

**FINANCIAL STATEMENTS  
For the year ended 31 December 2020**

Financial statements prepared on behalf of Hooton PCC

By D M Busfield

**Independent examiner's report to the trustees of The Parochial Church Council of St Paul's Hooton**

I report to the charity trustees on my examination of the accounts of The Parochial Church Council of St. Paul's Hooton for the year ended 31 December 2020.

**Responsibility and basis of report**

As the charity trustees you are responsible for the preparation of the accounts in accordance with the requirements of the Charities Act 2011 ('the Act).

I report in respect of my examination of the charity's accounts carried out under section 145 of the Act and in carrying out my examination I have followed all applicable Directions given by the Charity Commission under section 145(5)(b) of the Act.

**Independent examiner's statement**

I have completed my examination. I confirm that no material matters have come to my attention in connection with the examination giving me cause to believe that in any material respect:

1. Accounting records were not kept in respect of the charity as required by section 130 of the Act: or
2. The accounts do not accord with those records; or
3. The accounts do not comply with the applicable requirements concerning the form and content of accounts set out in the Charities (Accounts and Reports) Regulations 2008 other than any requirement that the accounts give a true and fair view which is not a matter considered as part of an independent examination.

I confirm that there are no other matters to which your attention should be drawn to enable a proper understanding of the accounts to be reached.

Suzanne Draper FCCA ACA  
ICAEW  
SB&P  
Oriel House  
2-8 Oriel Road  
Bootle  
Liverpool  
Merseyside  
L20 7EP

Date: .....

**PAROCHIAL CHURCH COUNCIL OF  
ST PAUL'S, HOOTON  
STATEMENT OF FINANCIAL ACTIVITIES  
For the year ended 31 December 2020**

	Note	Unrestricted Funds £	Designated Funds £	Restricted Funds £	Endowment Funds £	TOTAL FUNDS 2020	TOTAL FUNDS 2019
<b>INCOMING RESOURCES</b>							
Voluntary income	2(a)	48988.86	0.00	2695.00	0.00	51683.86	59255.80
Activities for Generating Funds	2(b)	5679.57	0.00	0.00	0.00	5679.57	15467.81
Income from Church Activities	2(c)	15146.83	1169.81	0.00	0.00	16316.64	26792.72
Income from Investments	2(d)	0.00	375.13	0.00	0.33	375.46	739.54
Other Incoming Resources	2(e)	1775.80	0.00	0.00	0.00	1775.80	58.00
<b>TOTAL INCOMING RESOURCES</b>		<b>71591.06</b>	<b>1544.94</b>	<b>2695.00</b>	<b>0.33</b>	<b>75831.33</b>	<b>102313.87</b>
<b>RESOURCES EXPENDED</b>							
Grants and Charitable Donations	3(a)	0.00	0.00	0.00	0.00	0.00	150.00
Church Activities	3(b)	91647.99	332.90	1711.00	0.00	93691.89	99027.18
Costs of Generating Funds	3(c)	401.41	0.00	0.00	0.00	401.41	752.97
Costs of Governance and Support	3(d)	5092.84	0.00	0.00	0.00	5092.84	5590.13
<b>TOTAL RESOURCES EXPENDED</b>		<b>97142.24</b>	<b>332.90</b>	<b>1711.00</b>	<b>0.00</b>	<b>99186.14</b>	<b>105520.28</b>
<b>NET INCOMING (OUTGOING) RESOURCES</b>							
		-25551.18	1212.04	984.00	0.33	-23354.81	-3206.41
Depreciation		0.00	0.00	0.00	0.00	0.00	0.00
<b>GAINS AND LOSSES ON INVESTMENTS</b>							
Realised		0.00	0.00	0.00	0.00	0.00	0.00
Unrealised		0.00	0.00	0.00	0.00	0.00	0.00
Capital adjustment		0.00	0.00	0.00	0.00	0.00	0.00
<b>TRANSFERS BETWEEN FUNDS</b>	9	20753.01	-20260.00	0.00	-493.01	0.00	0.00
<b>NET MOVEMENT IN FUNDS</b>		<b>-4798.17</b>	<b>-19047.96</b>	<b>984.00</b>	<b>-492.68</b>	<b>-23354.81</b>	<b>-3206.41</b>
<b>BALANCE B/FWD AT 1 JANUARY</b>		<b>394172.47</b>	<b>95322.23</b>	<b>9677.31</b>	<b>492.68</b>	<b>499664.69</b>	<b>502871.10</b>
<b>BALANCES C/FWD AT 31 DECEMBER</b>		<b>389374.30</b>	<b>76274.27</b>	<b>10661.31</b>	<b>0.00</b>	<b>476309.88</b>	<b>499664.69</b>

**PAROCHIAL CHURCH COUNCIL OF  
ST PAUL'S, HOOTON  
BALANCE SHEET  
At 31 December 2020**

	Note	2020 £	2019 £
<b>FIXED ASSETS</b>			
Tangible fixed assets	5(a)	378798.00	378798.00
Investments	5(b)	<u>0.00</u>	<u>0.00</u>
		378798.00	378798.00
<b>CURRENT ASSETS</b>			
Debtors	7	7869.66	9134.80
Prepayments		6308.87	6304.40
CBF Church of England short term deposits		71843.75	91470.41
Cash at bank and in hand		<u>14267.73</u>	<u>16147.42</u>
		100290.01	123057.03
<b>LIABILITIES: AMOUNTS FALLING DUE WITHIN ONE YEAR</b>			
	8	2778.13	2190.34
<b>NET CURRENT ASSETS</b>		97511.88	120866.69
<b>NET ASSETS</b>		<u><u>476309.88</u></u>	<u><u>499664.69</u></u>
<b>FUNDS</b>			
Unrestricted	6	389374.30	394172.47
Designated		76274.27	95322.23
Restricted		10661.31	9677.31
Endowment		<u>0.00</u>	<u>492.68</u>
		<u><u>476309.88</u></u>	<u><u>499664.69</u></u>

Approved by the Parochial Church Council on 19th April 2021 and signed on its behalf by:

Reverend Keith Howard  
Chairman of the PCC

Mr Mark Stanley Holmes  
Church Warden

Mrs Alexandra Louise Duffey  
Church Warden

# PAROCHIAL CHURCH COUNCIL OF ST PAUL'S, HOOTON

## NOTES TO THE FINANCIAL STATEMENTS

For the year ended 31 December 2020

### 1. ACCOUNTING POLICIES

The charity constitutes a public benefit entity as defined by FRS 102. The financial statements have been prepared in accordance with Accounting and Reporting by Charities: Statement of Recommended Practice applicable to charities preparing their accounts in accordance with the Financial Reporting Standard applicable in the UK and Republic of Ireland (FRS102) issued on 16 July 2014 (as updated through Update Bulletin 1 published on 2 February 2016), the Financial Reporting Standard applicable in the UK and Republic of Ireland (FRS102), the Charities Act 2011 and UK Generally Accepted Practice as it applies from 1 January 2015.

The charity has applied Update Bulletin 1 as published on 2 February 2016 and does not include a cash flow statement on the grounds that it is applying FRS 102 Section 1A.

The financial statements are prepared on a going concern basis under the historical cost convention.

#### Funds

General funds represent the funds of the PCC that are not subject to any restrictions regarding their use and are available for application on the general purposes of the PCC. Funds designated for a particular purpose by the PCC are also unrestricted. The financial statements include all transactions, assets and liabilities for which the PCC is responsible in law. They do not include the financial statements of church groups that owe their main affiliation to another body nor those that are informal gatherings of Church members.

Restricted funds are funds which are to be used in accordance with specific restrictions imposed by the donors.

#### Incoming Resources

All incoming resources are included in the Statement of Financial Activities (SOFA) when the charity is legally entitled to the income after any performance conditions have been met, the amount can be measured reliably and it is probable that the income will be received.

No amount is included in the financial statements for volunteer time in line with the SORP (FRS 102).

#### *Voluntary income and capital sources*

Collections are recognised when received by or on behalf of the PCC. Planned giving receivable under Gift Aid is recognised only when received. Tax recoverable on Gift Aid donations is recognised when the income is recognised. Funds raised by the fete, garden party and similar events are accounted for gross. Sales of books and magazines from the church bookstall are accounted for gross.

#### *Other income*

Rental income from the letting of church premises is recognised when the rental is due.

#### *Income from investments*

Dividends are accounted for when due and payable and interest entitlements are accounted for as they accrue. Tax recoverable on such income is recognised in the same accounting year.

#### Resources used

All expenditure is accounted for on an accruals basis and has been classified under headings that aggregate all costs related to the category. Expenditure is recognised when there is a legal or

constructive obligation to make payments to third parties, it is probable that the settlement will be required and the amount of the obligation can be measured reliably.

Support costs are those that assist the work of the charity but do not directly represent charitable activities and include office costs, governance costs, and administrative payroll costs. They are incurred directly in support of expenditure on the objects of the charity. Where support costs cannot be directly attributed to particular headings they have been allocated to cost of raising funds and expenditure on charitable activities on a basis consistent with use of the resources.

#### *Grants*

Grants and donations are accounted for when paid over, or when awarded, if that award creates a binding obligation on the PCC.

#### *Activities directly relating to the work of the Church*

The diocesan parish share is accounted for when due. Any parish share unpaid at the year end is provided for in these accounts as an operational (though not a legal) liability and is shown as a creditor in the Balance Sheet.

### **Fixed assets**

#### *Consecrated property and movable church furnishings*

Consecrated and beneficed property of any kind is excluded from the financial statements by s.10(2)(a) of the Charities Act 2011. All expenditure incurred in the year on consecrated or beneficed buildings, individual items under £1,000 or on the repair of moveable church furnishings acquired before 1 January 2000 is written off.

#### *Other fixtures, fittings and office equipment*

Equipment used within the church premises is depreciated on a straight line basis over four years to write off the cost of each asset over its expected useful life. Individual items of equipment with a purchase price of £1,000 or less are written off when the asset is acquired.

#### *Current assets*

Short-term deposits include cash held on deposit either with the CBF Church of England Funds or at the bank.

### **Tax**

The charity is an exempt charity within the meaning of schedule 3 of the Charities Act 2011.

### **Going Concern**

The financial statements have been prepared on a going concern basis as the trustees believe that no material uncertainties exist. The trustees have considered the level of funds held and the expected level of income and expenditure for 12 months from authorising these financial statements. The budgeted income and expenditure is sufficient with the level of reserves for the charity to be able to continue as a going concern

**PAROCHIAL CHURCH COUNCIL OF ST PAUL'S, HOOTON**

**NOTES TO THE FINANCIAL STATEMENTS**

**For the year ended 31 December 2020**

**2. INCOMING RESOURCES**

	Unrestricted Funds £	Designated Funds £	Restricted Funds £	Endowment Funds £	TOTAL FUNDS 2020	TOTAL FUNDS 2019
<b>2(a) Voluntary Income</b>						
Tax-efficient Planned Giving	23086.65	0.00	0.00	0.00	23086.65	26093.55
Other Planned Giving	7545.37	0.00	0.00	0.00	7545.37	6351.31
Collections (Offertory Plate)	4113.03	0.00	0.00	0.00	4113.03	7245.02
Occasional Gift Aid	315.00	0.00	0.00	0.00	315.00	237.56
Income tax recovered and recoverable	7771.66	0.00	0.00	0.00	7771.66	9064.26
Donations, including flower fund	6157.15	0.00	2695.00	0.00	8852.15	10264.10
	<u>48988.86</u>	<u>0.00</u>	<u>2695.00</u>	<u>0.00</u>	<u>51683.86</u>	<u>59255.80</u>
<b>2(b) Activities for Generating Funds</b>						
Fetes, bazaars, other fund raising events	2736.50	0.00	0.00	0.00	2736.50	6481.32
Church hall lettings, etc.	2943.07	0.00	0.00	0.00	2943.07	8986.49
	<u>5679.57</u>	<u>0.00</u>	<u>0.00</u>	<u>0.00</u>	<u>5679.57</u>	<u>15467.81</u>
<b>2(c) Income from Church Activities</b>						
Magazine	0.00	921.86	0.00	0.00	921.86	1221.74
Sub Group income	0.00	247.95	0.00	0.00	247.95	1352.63
Fees	15146.83	0.00	0.00	0.00	15146.83	24218.35
	<u>15146.83</u>	<u>1169.81</u>	<u>0.00</u>	<u>0.00</u>	<u>16316.64</u>	<u>26792.72</u>
<b>2(d) Income from Investments</b>						
Dividends and interest	0.00	375.13	0.00	0.33	375.46	739.54
<b>2(e) Other Incoming Resources</b>						
Miscellaneous income	0.00	0.00	0.00	0.00	0.00	0.00
HMRC CJRS Furlough Grants	1747.80	0.00	0.00	0.00	1747.80	0.00
General	28.00	0.00	0.00	0.00	28.00	58.00
	<u>1775.80</u>	<u>0.00</u>	<u>0.00</u>	<u>0.00</u>	<u>1775.80</u>	<u>58.00</u>
<b>TOTAL INCOMING RESOURCES</b>	<u>71591.06</u>	<u>1544.94</u>	<u>2695.00</u>	<u>0.33</u>	<u>75831.33</u>	<u>102313.87</u>

**3. RESOURCES EXPENDED**

	Unrestricted Funds £	Designated Funds £	Restricted Funds £	Endowment Funds £	TOTAL FUNDS 2020.00	TOTAL FUNDS 2020.00
<b>3(a) Grants</b>						
Missionary and charitable giving						
Home missions and other church societies	0.00		0.00	0.00	0.00	150.00
<b>3(b) Church Activities</b>						
Ministry: Diocesan Parish Share	67624.32	0.00	0.00	0.00	67624.32	65974.92
Clergy expenses	0.00	0.00	0.00	0.00	0.00	681.63
Visiting clergy	0.00	0.00	0.00	0.00	0.00	347.20
Church maintenance and running expenses	12025.15	0.00	1216.00	0.00	13241.15	11263.31
Upkeep of churchyard	214.37	0.00	495.00	0.00	709.37	2372.06
Parish magazine costs	0.00	250.00	0.00	0.00	250.00	132.00
Sub group costs	0.00	82.90	0.00	0.00	82.90	660.05
Church hall running costs	4580.88	0.00	0.00	0.00	4580.88	7940.29
Salaries, Wages and Honoraria	3651.30	0.00	0.00	0.00	3651.30	4192.50
Cost of services	674.50	0.00	0.00	0.00	674.50	2665.91
Vicarage	2877.47	0.00	0.00	0.00	2877.47	2797.31
	<u>91647.99</u>	<u>332.90</u>	<u>1711.00</u>	<u>0.00</u>	<u>93691.89</u>	<u>99027.18</u>
<b>3(c) Costs of Generating Funds</b>						
Costs of fetes and other fund-raising	0.00	0.00	0.00	0.00	0.00	21.25
Weekly giving envelopes	191.41	0.00	0.00	0.00	191.41	186.72
Flower fund	210.00	0.00	0.00	0.00	210.00	545.00
	<u>401.41</u>	<u>0.00</u>	<u>0.00</u>	<u>0.00</u>	<u>401.41</u>	<u>752.97</u>
<b>3(d) Costs of Governance and Support</b>						
Office Equipment, Consumables & Maintenance	4153.84	0.00	0.00	0.00	4153.84	4672.13
Bank charges and loan interest	0.00	0.00	0.00	0.00	0.00	0.00
Independent Examiner	864.00	0.00	0.00	0.00	864.00	858.00
Deanery subscription	75.00	0.00	0.00	0.00	75.00	60.00
	<u>5092.84</u>	<u>0.00</u>	<u>0.00</u>	<u>0.00</u>	<u>5092.84</u>	<u>5590.13</u>
<b>TOTAL RESOURCES EXPENDED</b>	<u>97142.24</u>	<u>332.90</u>	<u>1711.00</u>	<u>0.00</u>	<u>99186.14</u>	<u>105520.28</u>

**PAROCHIAL CHURCH COUNCIL OF ST PAUL'S, HOOTON**

**NOTES TO THE FINANCIAL STATEMENTS**

**For the year ended 31 December 2020**

<b>4. STAFF COSTS</b>	2020 £	2019 £
Salaries (including CJRS grant for 2020)	3651.30	4192.50
Income tax	0	0
Average number of employees	1	1

No employees received total employee benefits of more than £60,000

**5. FIXED ASSETS**

5(a) Tangible fixed assets	Freehold land and buildings £	Fixtures and fittings £	Total £
Cost at 1 Jan 2020	378798.00	0.00	378798.00
Additions at cost	0.00	0.00	0.00
Disposal	0.00	0.00	0.00
Cost at 31 Dec 2020	<u>378798.00</u>	<u>0.00</u>	<u>378798.00</u>
Depreciation at 1 Jan 2020	0.00	0.00	0.00
Charge for year	0.00	0.00	0.00
Depreciation on disposals	0.00	0.00	0.00
Depreciation at 31 December 2020	<u>0.00</u>	<u>0.00</u>	<u>0.00</u>
Net book value at 31 Dec 2020	<u><u>378798.00</u></u>	<u><u>0.00</u></u>	<u><u>378798.00</u></u>
Net book value at 31 Dec 2019	<u><u>378798.00</u></u>	<u><u>0.00</u></u>	<u><u>378798.00</u></u>

**6. ANALYSIS OF NET ASSETS BY FUND**

	Unrestricted Funds £	Designated Funds £	Restricted Funds £	Endowment Funds £	TOTAL FUNDS 2020 £
Fixed assets	378798.00	0.00	0.00	0.00	378798.00
Current assets	13354.43	76274.27	10661.31	0.00	100290.01
Current liabilities	-2778.13		0.00	0.00	-2778.13
	<u>389374.30</u>	<u>76274.27</u>	<u>10661.31</u>	<u>0.00</u>	<u>476309.88</u>

Designated Funds represent the funds set aside by the PCC for the purposes of:

(a) Reserve Funds	£ 69243.42
(b) General Maintenance Fund	2600.33
and (c) the operation of the church's sub-groups.	<u>4430.52</u>
	<u>76274.27</u>

Restricted Funds represent the funds set aside by the PCC for the purposes of:

(a) Church Projects fund	8461.31
(b) Dome appeal donations (to 31 Dec)	2200.00
(c) Churchyard maintenance fund	0.00
	<u>10661.31</u>

**PAROCHIAL CHURCH COUNCIL OF ST PAUL'S, HOOTON**

**NOTES TO THE FINANCIAL STATEMENTS**

For the year ended 31 December 2020

**7. DEBTORS**

	2020	2019
	£	£
Income tax recoverable	7771.66	9064.26
Other recoverable	0.00	0.00
Other debtors (balance of funeral fees owing)	98.00	70.54
Prepayments (Insurance premiums payable in advance)	6308.87	6304.40
	14178.53	15439.20

**8. LIABILITIES: AMOUNTS FALLING DUE WITHIN 1 YEAR:**

	2020	2019
	£	£
Church running costs (gas & electricity)	1120.28	906.59
Hall running costs (ga & electricity)	289.90	325.01
Assigned fees owing	422.00	
Other	945.95	958.74
	2778.13	2190.34

**9. TRANSFERS BETWEEN FUNDS / FUND CLOSURES**

	Unrestricted Funds	Designated Funds	Restricted Funds	Endowment Funds
	£	£	£	£
Payments from Magazine Account to PCC general account	260.00	-260.00		
Transfer of funds from CBF deposit to main fund	20000.00	-20000.00		
Closure of Religious Education Fund	493.01			-493.01
	20753.01	-20260.00	0.00	-493.01

(A transfer from a designated Church Group fund to the general fund represents an amount donated by the individual group to the Church for the purpose of general use)

The Religious Education Fund has been dormant for >10 years and the balance was transferred to the main account to consolidate funds during the Covid-19 related loss of income

**10. INDEPENDENT EXAMINER**

The Independent Examiner's fee was £864.

**11. RELATED PARTY DISCLOSURES**

There were no related party transactions during this year.