

REACH CHARITY LIMITED
(A COMPANY LIMITED BY GUARANTEE)



**ANNUAL
REPORT
AND
ACCOUNTS
2023 – 2024**

**Covering the period 1 March 2023 to 29
February 2024**

ANNUAL REPORT 2023-2024

The Trustees of Reach Charity Ltd are pleased to present their annual report, together with the financial statements for the charity for the year ending 29 February 2024.

The Trustees are also Directors of the Company for the purposes of the Companies Act 2006.

Purpose and impact

Reach was established to provide **support for children, and their families, with upper limb differences**, to help them feel comfortable in their own skin and to live their lives beyond limits.

The main activities carried out in support of these charitable purposes are:

- Organising **events** that bring children with upper limb differences together with others, both at a local branch level and at our annual Reach Activity Week for secondary-school aged children, and Family Weekend.
- Providing **support** to parents of children with upper limb differences, through networks of others who have had similar experiences and can share their learning and understanding.
- Providing **public information** to health professionals on how best to support children with upper limb differences and their parents.
- Provide Bursary **grants** to help children with upper limb differences and young adults with adaptations that enable them to participate in their chosen occupations.

In shaping our objectives and activities, the Trustees have considered the Charity Commission's guidance on public benefit, including the guidance 'Public Benefit: running a charity'.

The Board of Trustees are extremely grateful of the hard work and creativity of our volunteers and staff for everything they have done to ensure Reach continues to provide a positive difference to many families this year. We currently have more than 600 children and young people with upper limb differences within our community and support 860 members.

Our Vision and Values

Reach is a friendly, caring place for incredible children and their incredible families. We give support and information to inspire and build their future.

We offer fun activities to encourage Reach children to aim higher, whatever their age or ability.

Reach is... positive

Even in the darkest moments, we want Reach to be a ray of hope in our members' lives. We see the potential in all Reach children and celebrate their ability, never focusing on disability.

Reach is... supportive

We recognise that different families want different levels of support, and we tailor our approach to suit them.

We're there to provide resources, support and practical advice; whatever our families tell us they need.

Reach is... inspiring

Our members are amazing, and we shout about their achievements whenever we can. We share success stories and hero those 'wow' moments, big and small, to show families just what our incredible children are capable of doing.

Reach is... community

Connecting families is a vital part of Reach's work and this creates priceless bonds. Whether it's at our family weekend, branch meetings or on our Facebook forum, we help members to build relationships that last a lifetime

Ethical principles

- **Beneficiaries come first** - we carry out our work for the public benefit.
- **Integrity** - everyone who works or volunteers for Reach should uphold the highest level of integrity and personal conduct at all times.
- **Conflict of interests** Trustees, staff and volunteers are required to declare any matter where there may be, or seen to be, any conflict of interest with the purposes of the Charity, or where they may have a personal interest or benefit. Trustees are not permitted to vote on any matter where such a conflict does or may arise.

More detail on the way we apply our ethical principles is published on the charity's website:

<https://www.reach.org.uk/our-policies-procedures>

Governance and Decision-making

Reach is a Company limited by guarantee and is registered as a charity with both the Charity Commission for England and Wales and the Office of the Scottish Charities Regulator. We are governed by our Memorandum and Articles of Association, which are available on our website:

<https://www.reach.org.uk/our-policies-procedures>.

Responsibility for the overall administration of the charity lies with the Trustees. Together they make up the Trustee Board. Trustees are elected by members of the charity at the annual general meeting but may additionally be co-opted in-year to fill particular skills gaps on the board. Any co-opted trustee is subject to election by the members at the next annual general meeting. A third of all other serving Trustees retire at each annual general meeting but can stand for re-election if the rest of the Trustee Board supports their nomination.

The Trustee Board elects, from its members, three officers: a chair, a vice-chair and a treasurer. The Board meet on a quarterly basis, with sub committees meeting as required to look at specific priority areas (Fundraising, Governance, Management, Finance, Ireland and Health professionals) and discuss issues in more detail in order to advise the Board.

The Board aims to make decisions by consensus but, in the rare event that this is not possible, decides matters on a majority vote. All Trustees are bound by the principle of collective responsibility – that is to say that they have agreed to accept a decision of the board, even if this was not their personal view.

The Board delegates the majority of the day-to-day operational management of the charity to the Operations Lead. The Board delegates decisions on the award of bursaries to the independent Bursary Panel.

The Board has a risk register for overseeing and managing risks to the charity's operation. This is reviewed by the Board at least quarterly, and more frequently as events require.

We are registered with and regulated by the Charities Commission and Companies House. Over the years there have been several changes to both charities and company laws and regulations, and this

year recognised the need to update our purposes and Articles of Association to reflect these. After a year-long consultation involving a working group made up of Trustees & Volunteer Branch Coordinators, industry legal professionals and meetings with Reach members online and in person to ensure these documents are in line with the rules and our members wishes, our members voted unanimously at our AGM 26 October 2024 to adopt a new set of Articles of Association.

In January 2022 the Board updated its strategic priorities for the period 2022-27, to bring greater clarity and focus to how Reach furthers its charitable purposes:

- **Raise the profile of limb difference**, to help improve confidence of those living with an upper limb difference to be able to live their lives without limits.
- Run a series of **high-quality activities and programmes**, to bring together and/or support children and young people with upper limb differences to help improve their confidence in being able to live their lives.
- **Improve communication with, and support for, our stakeholders**, so that every new parent and child with an upper limb difference has access to support when they need it.
- **Develop our fundraising strategy and increase the stability of income** for Reach, so that we are resourced to carry out a range of positive support for our beneficiaries.
- **Strengthen our corporate governance**, so that we protect the charity by complying with the law and furthering our charitable purposes.

Trustees' Responsibilities

The Trustees (who are also the directors of Reach Charity Limited for the purpose of company law) are responsible for preparing the Trustees' report and financial statements in accordance with applicable law and regulations.

Company and charity law requires the Trustees to prepare financial statements each financial year. Under company law the trustees must not approve the financial statements unless they are satisfied that they give a true and fair view of the state of affairs of the charitable company and of the incoming resources and application of resources, including the income and expenditure, of the charitable company for that period.

In preparing financial statements, the Trustees are required to:

- select suitable accounting policies and then apply them consistently;
- observe the methods and principles in the Charities SORP;
- make judgements and estimates that are reasonable and prudent;
- state whether applicable UK Accounting Standards have been followed, subject to any material departures disclosed and explained in the financial statements; and
- prepare the financial statements on the going concern basis unless it is inappropriate to presume that the charity will continue to operate.

The Trustees are responsible for keeping proper accounting records that are sufficient to show and explain the charitable company's transactions and disclose with reasonable accuracy at any time the financial position of the charitable company and enable them to ensure that the financial statements comply with the Companies Act 2006, the Charities and Trustee Investment (Scotland) Act 2005 and the

Charities Act 2011. They are also responsible for safeguarding the assets of the charitable company and hence for taking reasonable steps for the prevention and detection of fraud and other irregularities.

Branch Network

The backbone of Reach is our 18 Branches throughout the UK and the Republic of Ireland. These are led by 27 dedicated volunteer Branch Coordinators who organise regional events for our members and provide support to new and existing Reach families via the telephone, on closed group social media forums (Facebook & WhatsApp) & face-to-face meetings.

These are often the only experience some of our Reach children have of meeting with other children with upper limb difference. The opportunity to connect with others with similar differences, and to realise that they are not alone is invaluable. For their parents, the opportunity to learn from the experience of other parents is important in supporting their children grow up confident in their ability to live their lives without limits.

To remain in line with the Republic of Ireland's charity and company rules a new Company - Reach Upper Limb Difference (Ireland) Company Limited by Guarantee Registration Number 738942 has been registered. The process of registering with the Charities Regulator is ongoing and is being managed by Solicitors Sherwin O'Riordan.

Historically all Branch finances have been accounted for before within the Reach Charity Ltd annual accounts. A separate bank account has been maintained in Ireland, denominated in Euros.

On completion of the registration requirements the funds held in the Irish accounts will be formally transferred to Reach Ireland Ltd. For accounting purposes these funds are shown in the current accounts as 'designated funds'.

Notwithstanding this regulatory change the Irish branch remains very much part of our Reach family.

Highlights of 2023-24

Last year saw several changes to our Trustee Board to ensure we have the correct balance of skills and life experience to move forward, and to increase the support we can give to our members. We have succeeded in recruiting new and younger professionals as Trustees with skills in areas seen as important to the Charity, including finance, legal, fundraising, PR, & Governance.

The Board has a balance of experienced Trustees, several with experience of being a volunteer branch coordinator, and members new to trusteeship. This balance of new and old ensures we have a Board that can fully reflect the views of our membership, provide a wide range of skills and professionalism in key areas, and guarantee the future of the Charity.

The year also saw changes in employed staff, who brought with them great knowledge and experience of working within the charity sector. Their drive and commitment have enabled us to push forward with our goals of expanding the support and services we provide to our members, and our volunteer branch coordinators who support our community at a local level. This year we saw a dramatic increase in the number of local branch events delivered, with 459 individual Reach children (76.5% of the Reach children in our community) participating in Reach events across the UK and in Ireland.

We continue to work with external professionals such as our legal advisors and accountants, editors of our member magazine Within Reach, and media production professionals, several bringing with them their own lived experience of upper limb difference.

This year we contracted a social media manager with lived experience of upper limb difference and the skills and knowledge to help us connect with a younger audience and begin to build representation on new to us social media platforms like Instagram. The dedicated work of our new social media manager, July 23 – February 24, saw our Facebook reach increase by 83%, visits increase by 51.7% and follows by 28.1%. Instagram reach increased by 53% and visits by 154%.

Annual Family Weekend (AFW) and AGM – October 2023

2023 marked the year, following the disruption of the Covid epidemic, that we were able to resume our Annual Family Weekend, combined with our AGM at full capacity. This is the flagship of our activities, this year bringing together 93 Reach families to meet, hear inspirational speakers, and form what can be life-long bonds.

This year AFW was held at the Delta Marriott Hotel, Gateshead. Building on the experiences of recent years the weekend included live streaming enabling many more families who were not able to join us in person to join us virtually. This was very popular and enabled us to 'touch' many more families than ever before via a bespoke platform throughout the UK, the Republic of Ireland and indeed, our members around the world.

We are extremely grateful to our host for the weekend, Alastair Greener, who gives his time and skills without charge, and the expertise and technical support of James Jones of JJT Services, who has been a member of the Reach community since childhood.

The arrival of a new child with an upper limb difference can be a shock to any parent, and we seek to reinforce the message that they are all valued and capable of amazing things and careers.

This year we were delighted to hear the inspirational stories of Louise Hawkins, who, after public speaking for the first time, received a standing ovation, Owain Beesley (Just 15 years old), and Reach Ambassador Alex Brooker.

Guest Speakers included: Dr (now Professor) Dorothy Cowie from BOLDkids, veteran Reach member and contributor, Bill Basford, and Reach Ambassador, Briony May Williams who gave a cooking demonstration whilst being interviewed.

Reach Activity Week (RAW) August 2023

The Reach Activity Week (RAW) is one of our key events, bringing together secondary school-age children with upper limb differences and led by a group of our adult mentors - all with upper limb differences themselves.

This year we were at Carlton Lodge with young people from 32 families coming together from all across the UK to enjoy outdoor and adventurous activities. Some come back every year and every year they are joined by young people wanting to share experience with other young people who 'look like them'.

It is highly valued by all of them, and a rare opportunity to take part with others with limb differences, and build on practical experiences, build new skills and appreciate that life is about ability, not disability.

All attending adult members volunteer their time to deliver RAW, all have an upper limb difference, and the value of the children seeing them acting as leaders and mentors is immeasurable. Several of the mentors came to RAW themselves as children and are keen to pay forward the lessons and skills they learnt- this is the great and unique strength of RAW. This year we increased the number of Mentors supporting delivery to 10 and organised mental health training for the Mentors in response to a rise in the number of young people within our community experiencing mental health problems.

RAW25 is already booked for 3-10 August 2025. Building on increased delivery 2024-25 and the introduction of an activity bursary we anticipate an increase in attendance 2025-26.

Regional Weekends

Following feedback from Reach families, and the loss of our annual camping event at Tyncae as Reach members, and Farm owners, Mr Davies MBE and his wife retired from running the event for many years, we are working in partnership with our volunteer branch coordinators in South Wales, Scotland, the Northwest & East Anglia to develop and share their learning across our branch network and support the growth of a new low-cost regional family weekend programme, to enable more families to participate throughout the UK, extend their experience and opportunities to connect with other reach families and to ensure that no child misses out.

In 2023-24 our Northwest Branch Coordinators organised a Reach Family Weekend at Patterdale Activity Centre, the event was full to brimming with a reserve list, in South Wales planning and fundraising began for an alternative offer to Tyncae.

Bursaries

People with upper limb differences face issues not encountered by the wider population. These often require the need for person-specific adaptations or purchase of specialized equipment. All of these have a cost, which can be a barrier to some families. The Reach Bursary Scheme was set up to help remove or reduce barriers associated with upper limb differences.

Members are welcome to make application for assistance for specific needs. The most common of these is for adaptations for driving but have also included: bike adaptations, adapted musical instruments, para-athlete equipment and event costs, modified laptops, and attendance at RAW.

Award decisions are taken by an independent panel with professional knowledge and lived experience of limb difference.

In 2022 a review of the Bursary Scheme was undertaken with representatives of the Bursary Scheme as part of a wider ongoing programme to review all Reach charitable activities to ensure they continue to align fully with the charity's Objects and the Charity Commission's guidance on Public Benefits.

The review confirmed the value of the Bursary Scheme as a vital part of how we support children and young people with upper limb differences, and refocused the application form to enable applicants to provide clearer information to demonstrate how the thing they were seeking support for would remove or reduce a barrier associated with their upper limb difference.

Further review in this financial year has resulted in the introduction of activity and membership bursaries to increase access, inclusion and participation.

Providing support to parents of children with upper limb differences

Our staff team and volunteer parents and adults with upper limb difference continued to offer telephone, email and online support via our closed groups to existing members and prospective new members as well as dealing with queries from the general public and from health professionals. Being able to connect new parents with access to experience and support from other members of the limb difference community is a very important part of our work. This year supported by Trustee, Ruther Lester OBE we also reestablished attendance of midwifery conferences, attending and running a workshop at the London Midwives Festival in January 2024.

We recognise that many issues that affect children with limb difference do not end at age 18. As part of the process undertaken this year, our Articles of Association Working Group have drafted a new Object for Reach to enable our support of Reach members as they start their journey into adult life. The new draft object was shared with our members as part of the consultation process this year. They are the future of Reach, and we are extremely grateful for the support they give our members at branch, regional and national events. The new object will be put forward to the Charity Commission once our new articles are in place.

Social media

Reach continues to be active on social media. As well as our public sites we maintain closed groups on Facebook and WhatsApp for use of our Branches and members to ensure we are GDPR compliant and respectful of our members.

In addition, we use Instagram and LinkedIn to increase public awareness of upper limb differences, the support available, and to reach new members, healthcare professionals and potential funders.

The closed Facebook groups are very well used for communication between families, asking for advice or support, as well as celebrating the 'wins'. The closed Branch Facebook groups and the Branch WhatsApp groups tend to be used for information locally.

Our Social Media Manager has undertaken a review of all our social media outlets to bring them up to date and increase user accessibility.

Financial position

Our annual financial accounts for the year to February 2024 are attached to this report.

For many charities, including Reach, the last few years have been a challenging period. The Covid pandemic and following financial downturn have led to a reduction in donation income.

We were therefore delighted to receive a fantastic legacy of £540,000. This was the substantial part of the estate of a gentleman previously unknown to Reach. We do not know why this gentleman decided to leave his estate to us, but we are extremely grateful. Due diligence and money laundering enquiries were completed to ensure the Charity acted correctly in receiving these funds.

During the Covid period of reduced activity we were able to retain donations received due to the reduced level of activities. This meant that we started the year with cash funds of £238,078. Largely due to the legacy, we ended the year at £618,642.

It is worth noting that without the legacy, we would be reporting a deficit of the year of some £160,000 as we expanded our member activities and events. This was planned for and represented the spend of funds retained during the covid period

The Trustees intend to use our cash surplus over the next few years to support new project delivery, commission independent project evaluation with a view to sustaining delivery moving forward, encourage the delivery of an increased number of regional family events, improve the early experience of parents of children with upper limb difference, and support young adults, focusing on the 18-25 age group to begin with, online, in person and as a charity.

Reserves policy

As a charity, Reach's first duty is to its beneficiaries - current and future. All the charity's money must be spent to support the charitable purposes set out in our Articles of Association.

The Board of Trustees have a duty to act in the interests of the Charity's current and future beneficiaries, including ensuring that the Charity is capable of meeting all its contractual obligations and liabilities. This means, at the most extreme, ensuring there are sufficient funds held in order to cover the cost of winding up the Charity, should this prove necessary at some future date.

It also means taking steps to protect the Charity against future reductions in income – the equivalent of a 'rainy day' fund, that would enable the Charity to continue to operate in support of its beneficiaries in the event of its income ceasing or being significantly reduced. A small charity like Reach is very vulnerable to changes in the fundraising environment, as the Covid-19 restrictions have demonstrated. It is important to protect the charity's services to its beneficiaries to enable them to continue, as far as possible, despite reductions in income.

This includes ongoing review of all of our planned activities, and contingent planning if our income falls below expectations.

The Board considers the particular circumstances of Reach in assessing the level of funds required to meet this aim which we consider should meet, as a minimum, the cost of three months operating costs, plus the anticipated cost of winding up the Charity in the - hopefully very unlikely - event that this should prove necessary.

This reserve is to be reviewed annually by the Trustees, and for this financial year is set at £90,000. The authorisation of the full Board of Trustees is required to approve any expenditure that would erode reserves below that target level. We are pleased to confirm that our funds remain comfortably in excess of this figure.

Restricted Funds

The charity holds £22,196 as restricted funds.

This includes £13,200 (out of an original donation of £15,000) donated to Reach to fund specific research. The funder expressed the wish that this fund be maintained for research into the causes of congenital limb differences. The fund is insufficient to commission a research project and despite efforts over a long period, we have been unable to identify any ongoing research project that meets the fund's aims. We continue to look for a suitable project that meets the requirements of the funder. We intend to renew our efforts to find a suitable research project that we can donate the funds to via specialised

internet sites dedicated to sourcing funds for research.

A grant of £9,637 was received from The National Lottery specifically to fund an 18-25 Pilot delivered in 2024

Designated Funds

As we plan for the future, we face financial costs for upcoming activities which we are committed to. The anticipated cost of these are marked as designated funds.

As at 29 February 2024 this included £14,305 dedicated to our branch in the Republic of Ireland

To meet Republic of Ireland charity legislation a new Company in the Republic – Reach Upper Limb Difference (Ireland) Company Limited by Guarantee Registration Number 738942 has been created. The process of registering with the Charities Regulator is ongoing and is being managed by Solicitors Sherwin O'Riordan.

A separate bank account is held in Ireland, denominated in Euros, for the current operation of our Irish branch. On completion of this process these funds will be paid to the new Company. In the meantime, we have considered the funds as Designated Funds and not available for the general spending within Reach Charity Ltd

Going concern assessment

Each year the Trustees are required to review the financial position of the Charity and that it remains financially viable.

On review of the Accounts the Trustees remain satisfied that all reasonable steps have been taken to protect the Charity's assets and that it remains a viable Company. Reserves remain in excess of our minimum reserve and no commitment has been entered into which would change this position.

Administrative details

Company name: Reach Charity Ltd

Charity registration numbers: 1134544 (England & Wales),
SC049805 (Scotland)

Company registration number: 07054164

Registered office and principal office: Office No 4, The Library Rooms, 1st Floor,
59 High Street, Totnes, TQ9 5PB

Trustees and Directors: The directors of the charitable company are its trustees for the
Purposes of charity law. The trustees and officers in post at the
point at which this report was drawn were:

Christopher Creamer (chair)
Gary Phillips (vice chair)
Phillip Robertson (treasurer)
Julie Detheridge
Ruth Lester
Emily Tisshaw
Lee Harvey
Esther Pounder

Steve Haynes
Rebecca Nind
Ella Dickenson
Colm Creamer

Other Trustees who served during the reporting period were:

Amber Thacker (resigned 01-01-2024)

Key Management Personnel: Sarah Jane Lowson Charity Operations Lead
& Company Secretary

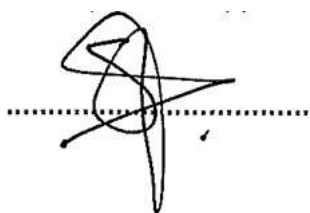
Independent Examiner: Andrew Wing,

Accountants: Wings, Chartered Accountants, Unit 1, Pearl, Assurance House,
Elbow Lane, Tavistock, Devon, PL19 0BG

Bankers: CAF Bank, 25 Kings Hill Avenue, Kings Hill, West Malling, Kent, ME19 4JQ
Co-operative Bank, P.O. Box 101, 1 Balloon Street, Manchester M60 4EP

In preparing this report, the Trustees have taken advantage of the small companies' exemption provided by section 415A of the Companies Act 2006.

This report was approved by the Trustees on Sunday 24 November 2024 and signed on their behalf by:

A handwritten signature in black ink, consisting of a large, stylized 'S' or 'R' shape with a horizontal line extending to the right, positioned above a dotted line.

Reach Company Secretary

ACCOUNTS 2023-2024

Independent Examiner's Report on the Accounts for the year ended 29 February 2024

I report to the charity trustees on my examination of the accounts of the company for the year ended 29 February 2024, which are set out on pages 15 to 25.

This report is made solely to the Trustees, as a body, in accordance with section 145 of the Charities Act 2011 and regulations made under section 154 of that Act and Regulation 11 of the Charities Accounts (Scotland) Regulations 2006. My work has been undertaken so that I might state to the Trustees those matters I am required to state to them in an Independent Examiner's report and for no other purpose. To the fullest extent permitted by law, I do not accept or assume responsibility to anyone other than the company and the company's Trustees as a body, for my work or for this report.

Responsibilities and basis of report

The charity's trustees (who are also the directors of the charitable company for the purposes of company law) are responsible for the preparation of the accounts in accordance with the requirements of the Charities and Trustee Investment (Scotland) Act 2005 ('the 2005 Act'), The Charities Accounts (Scotland) Regulations 2006 (as amended) ('the 2006 Accounts Regulations') and the Companies Act 2006 ('the 2006 Act').

Having satisfied myself that the accounts of the Company are not required to be audited under Part 16 of the 2006 Act and are eligible for independent examination, I report in respect of my examination of your charity's accounts as carried out under section 145 of the Charities Act 2011 ('the 2011 Act'). In carrying out my examination I have followed the Directions given by the Charity Commission under section 145(5) (b) of the 2011 Act.

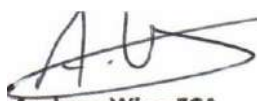
Independent examiner's statement

Since the charity is required by company law to prepare its accounts on an accruals basis and is registered as a charity in Scotland your examiner must be a member of a body listed in Regulations 11(2) of the 2006 accounts regulations. I can confirm that I am qualified to undertake the examination because I am a registered member of ICAEW, which is one of the listed bodies.

I have completed my examination. I confirm that no matters have come to my attention in connection with the examination giving me cause to believe:

- accounting records were not kept in respect of the Company as required by section 386 of the 2006 Act and Regulation 4 of the 2006 Accounts Regulations; or
- the accounts do not accord with those records and with the accounting requirements of Regulation 8 of the 2006 Accounting Regulations; or
- the accounts do not comply with the accounting requirements of section 396 of the 2006 Act other than any requirement that the accounts give a 'true and fair view' which is not a matter considered as part of an independent examination; or
- the accounts have not been prepared in accordance with the methods and principles of the Statement of Recommended Practice for accounting and reporting by charities preparing their accounts in accordance with the Financial Reporting Standard applicable in the UK and Republic of Ireland (FRS 102).

I have no concerns and have come across no other matters in connection with the examination to which attention should be drawn in this report in order to enable a proper understanding of the accounts to be reached.



Andrew Wing FCA

Wings Chartered Accountants
Unit 1 Pearl Assurance House
Elbow Lane
Tavistock
PL19 0BG

REACH CHARITY LIMITED
(A COMPANY LIMITED BY GUARANTEE)

STATEMENT OF FINANCIAL ACTIVITIES
(INCORPORATING THE INCOME AND EXPENDITURE ACCOUNT)
FOR THE YEAR ENDED 29 FEBRUARY 2024

		Unrestricted	Restricted	Total	Total
	Note	Funds £	Funds £	2024 £	2023 £
Income:					
Donations and legacies	2	659,752	9,737	669,489	117,904
Income from charitable activities	3	24,119	-	24,119	25,570
Income from other trading activities	4	30,749	1,000	31,749	56,220
Investment Income	5	2,431	-	2,431	326
Total Income		<u>717,051</u>	<u>10,737</u>	<u>727,788</u>	<u>200,020</u>
Expenditure:					
Raising funds	6	12,558	-	12,558	9,953
Charitable activities	7	244,742	1,741	246,483	90,920
Support activities	8	88,183	-	88,183	75,210
Total Expenditure		<u>345,483</u>	<u>1,741</u>	<u>347,224</u>	<u>176,083</u>
Net income/(expenditure) and net movement in funds for the year		371,568	8,996	380,564	23,937
Reconciliation of funds					
Total funds brought forward		224,878	13,200	238,078	214,141
Total funds carried forward		<u>596,446</u>	<u>22,196</u>	<u>618,642</u>	<u>238,078</u>

The statement of financial activities includes all gains and losses recognised in the year.

All income and expenditure derive from continuing activities.

The notes on pages 15 to 24 form part of these financial statements

REACH CHARITY LIMITED
(A COMPANY LIMITED BY GUARANTEE)

BALANCE SHEET

AS AT 29 FEBRUARY 2024

	Note	£	2024 £	£	2023 £
Fixed Assets					
Intangible assets	11		-		-
Tangible assets	12		15,440		16,425
			<u>15,440</u>		<u>16,425</u>
Current Assets					
Stock		2,149		924	
Debtors	13	17,767		29,256	
Cash at bank and in hand		596,874		198,508	
		<u>616,790</u>		<u>228,688</u>	
Creditors amounts falling due within one year	14	<u>(13,588)</u>		<u>(7,035)</u>	
Net current assets			<u>603,202</u>		<u>221,653</u>
Net Assets	17		<u>618,642</u>		<u>238,078</u>
The funds of the charity					
Unrestricted income funds	16		596,446		210,573
Designated funds			-		14,305
Restricted income funds	16		22,196		13,200
			<u>618,642</u>		<u>238,078</u>

The Trustees consider that the company is entitled to exemption from the requirements to have an audit under the provisions of section 477 of the Companies Act 2006 ("the Act") and members have not required the company to obtain an audit of its accounts for the year in question in accordance with section 476 of the Act.

The Trustees acknowledge their responsibility for complying with the requirements of the Companies Act 2006 with respect to accounting records and for preparing financial statements which give a true and fair view of the state of affairs of the company as at 29 February 2024 and of its net resources expended for the year in accordance with the requirements of sections 394 and 395 of the Act and which otherwise comply with the requirements of the Companies Act 2006 relating to financial statements, so far as applicable to the company.

The financial statements have been prepared in accordance with the provisions applicable to small companies within Part 15 of the Companies Act 2006.

The financial statements were approved by the Trustees on 24 November 2024 and signed on their behalf, by:



 Chair



 - Treasurer

The notes on pages 15 to 24 form part of these financial statements

**REACH CHARITY LIMITED
(A COMPANY LIMITED BY GUARANTEE)**

**NOTES OF THE FINANCIAL STATEMENTS
FOR THE YEAR ENDED 29 FEBRUARY 2024**

1. Accounting policies

1.1 Basis of preparation of Financial Statements

The financial statements have been prepared in accordance with Accounting and Reporting by Charities: Statement of Recommended Practice applicable to charities preparing their accounts in accordance with the Financial Reporting Standard applicable in the UK and Republic of Ireland (FRS102) (effective 1 January 2019) – (Charities SORP (FRS102)), the Financial Reporting Standard applicable in the UK and Republic of Ireland (FRS102) and the Companies Act 2006.

Advantage has been taken of disclosure exemptions as set out in FRS102.1.12 from the requirement to produce a cashflow statement.

Reach Charity Limited meets the definition of a public benefit entity under FRS102. Assets and liabilities are initially recognised at historical cost or transaction value unless otherwise stated in the relevant accounting policy notes.

1.2 Company Status

The company, which was incorporated in the United Kingdom, is a company limited by guarantee and has no share capital. The directors of the company are the Trustees named on page 14. In the event of the company being wound up, the liability in respect of the guarantee is limited to £10 per member of the company.

1.3 Fund Accounting

General funds are unrestricted which are available for use at the discretion of the Trustees in furtherance of the general objectives of the company and which have not been designated for other purposes.

Designated funds comprise of unrestricted funds that have been set aside by the Trustees for particular purposes.

Restricted funds are to be used in accordance with specific restrictions imposed by donors. The cost of raising and administering such funds are charged against the specific fund. The aim and use of each restricted fund is set out in the notes to the financial statements.

Investment income, gains and losses are allocated to the appropriate fund.

1.4 Income

Income is recognised when the charity has entitlement to the funds, any performance conditions attached to the item(s) of income have been met or when it is probable that the income will be received, and the amount can be measured reliably.

For legacies, entitlement is taken as the earlier of the date on which either: the charity is aware that probate has been granted, the estate has been finalised and notification has been made by the executor(s) to the charity that a distribution will be made, or when a distribution is received from the estate. Receipt of a legacy, in whole or in part, is only considered probable when the amount can be measured reliably, and the charity has been notified of the executor's intention to make a distribution. Where legacies have been notified to the charity, or the charity is aware of the granting of probate, and the criteria for income recognition have not been met, then the legacy is treated as a contingent asset and disclosed if material.

For pledges, entitlement is the earlier of the pledge being probable and measurable or the pledge being received.

Income tax recoverable in relation to donations received under Gift Aid or deeds of covenant is recognised at the time of the donation.

REACH CHARITY LIMITED
(A COMPANY LIMITED BY GUARANTEE)

Income from trading activities is the amount derived from ordinary activities and is stated after trade discounts.

1.5 Irrecoverable VAT

Irrecoverable VAT is charged as a cost against the activity for which the expenditure was incurred.

1.6 Expenditure

Expenditure is recognised once there is a legal or constructive obligation to make a payment to a third party, it is probable that settlement will be required, and the amount of the obligation can be measured reliably. Expenditure is classified under the following activity headings:

- Cost of raising funds comprise of costs associated with fundraising events which the charity organises in order to raise funds for furtherance of its objects.
- Expenditure on charitable activities comprise of costs associated with educational activities undertaken to further the purpose of the charity.
- Support costs are those functions that assist the work of the charity but do not directly undertake charitable activities. Support costs include head office costs, finance, personnel, payroll and governance costs which supports the charity's activities. These costs have been disclosed in note 8 to the financial statements.

1.7 Apportionment of costs

The apportionment of costs between "Raising funds", "Charitable activities" and "Support activities" has been done on the basis of the specific activities within each cost heading.

The following cost headings include activities covering more than one type of cost and have therefore been apportioned as follows:

- All employment related costs have been apportioned on the basis of the proportion of time spent by staff on those activities. For 2024, the following proportions have been used: 60% charitable activities and 40% support activities (2023 40% charitable activities, 45% support activities and 15% raising funds)
- Website/IT costs and insurance costs have been apportioned 60% charitable activities and 40% support, as an approximation of the value of these costs relating to the different headings.
- Advertising has been apportioned 50:50 between charitable activities and fundraising to recognise the split nature of advertising in delivering the charity's purposes of support and education and raising the profile of the charity for fund raising.

1.8 Intangible Fixed Assets and Amortisation

All assets costing more than £500 are capitalised. Intangible fixed assets are stated at cost less amortisation. Amortisation is provided at a rate calculated to write off the cost of the assets, over the expected useful life on the following basis:

Database - 5 years straight line

REACH CHARITY LIMITED
(A COMPANY LIMITED BY GUARANTEE)

1.9 Tangible Fixed Assets and Depreciation

All assets more than £500 are capitalised.

Tangible fixed assets are stated at cost less depreciation. Depreciation is provided at rates calculated to write off the cost of fixed assets, less their estimated residual value, over the expected useful lives on the following basis:

Recorders	-	5% reducing balance
Equipment	-	10% reducing balance

1.10 Operating Leases

Rentals under operating leases are charged to the statement of financial activities on a straight-line basis over the lease term.

1.11 Stocks

Stocks are valued at the lower of cost and net realisable value after making due allowance for obsolete and slow-moving items.

1.12 Debtors

Trade and other debtors are recognised at the settlement amount due after any trade discount offered. Prepayments are valued at the amount prepaid net of any discounts due.

1.13 Cash at Bank and in Hand

Cash at bank and cash in hand includes cash and short term highly liquid investments with a short maturity of three months or less than the date of acquisition or opening of the deposit or similar account.

1.14 Creditors and Provisions

Creditors and provisions are recognised where the charity has a present obligation resulting from a past event that will probably result in the transfer of funds to a third party and the amount due to settle the obligation can be measured or estimated reliably. Creditors and provisions are normally recognised at their settlement amount after allowing for any trade discounts due.

1.15 Foreign Currency

Profit and loss transactions in foreign currencies are translated into sterling at the exchange rate ruling at the date of the transaction. Monetary assets and liabilities denominated in foreign currencies are translated into sterling at the closing rates at the balance sheet date and the exchange differences are included in the profit and loss account.

1.16 Financial Instruments

The charity only has financial assets and financial liabilities of a kind that qualify as basic financial instruments. Basic financial instruments are initially recognised at transaction value and subsequently measured at their settlement value with the exception of bank loans, which are subsequently measured at amortised cost using the effective interest method.

REACH CHARITY LIMITED
(A COMPANY LIMITED BY GUARANTEE)

2. Income from Donations and Legacies

	Unrestricted 2024	Unrestricted 2023
	£	£
Gifts and Donations (includes Grants and legacies)	77,043	82,751
Legacy donation November 2023	540,303	-
Gift aid tax claimed/claimable	7,774	7,333
Membership Subs	34,632	27,820
	<u>659,752</u>	<u>117,904</u>

3. Income from Charitable Activities

	Unrestricted 2024	Unrestricted 2023
	£	£
Shared experience & Recorder sales	400	562
Family weekends	11,406	8,711
RAW Income	12,312	16,297
	<u>24,118</u>	<u>25,570</u>

4. Income earned from other trading activities

	Unrestricted 2024	Unrestricted 2023
	£	£
Fundraising events	1,224	42,533
Marathon/Running events	11,477	7,251
Challenge events	17,048	-
Deposits absorbed	-	-
Branches Income	882	882
Christmas cards	-	-
Advertising income	-	4,600
Miscellaneous income	116	954
	<u>30,747</u>	<u>56,220</u>

5. Investment income

	Unrestricted 2024	Unrestricted 2023
	£	£
Bank interest	<u>2,431</u>	<u>326</u>

REACH CHARITY LIMITED
(A COMPANY LIMITED BY GUARANTEE)

6. Analysis of expenditure on raising funds

	Unrestricted 2024	Unrestricted 2023
	£	£
Promotional Item costs	2,432	1,160
Fundraising costs	1,350	-
PR adverts	2,994	924
Challenges & events	1,341	
Marathon/Running costs	4,440	2,175
Salaries & Wages	-	4,354
PAYE/NI	-	70
Employer pension contributions	-	107
Within Reach	-	1,163
	<u>12,558</u>	<u>9,953</u>

7. Analysis of expenditure on direct charitable activities

	Unrestricted 2024	Unrestricted 2023
	£	£
Family weekends	72,397	34,706
RAW expenditure	27,064	19,567
Promotional item costs	3,648	-
Camping weekend	-	2,345
Bursary grants paid	7,287	2,954
Salaries & Wages	45,792	11,609
PAYE/NI	1,024	186
Employers pension contributions	972	287
Branches expenses	-	1,897
Branch meetings	10,864	4,723
Volunteer expenses & training	-	460
Insurance costs	1,130	1,637
Within Reach	23,171	10,471
Exhibition costs	-	78
Charitable materials & services	16,384	-
Equipment hire - repairs	592	-
Donation to Ireland	14,038	-
Social media manager	11,465	-
Advertising & marketing	2,994	-
IT software & consumables	5,920	-
	<u>244,742</u>	<u>90,920</u>

REACH CHARITY LIMITED
(A COMPANY LIMITED BY GUARANTEE)

8. Analysis of expenditure on support activities

	Unrestricted 2024	Unrestricted 2023
	£	£
Salaries & Wages	29,609	13,061
PAYE/NI	682	209
Employers pension contributions	648	323
Other employee benefits	350	143
Agency staff costs	918	16,940
Recruitment costs	2,779	1,038
Trustees' travel expenses	-	-
Staff expenses & training	7,443	1,758
Trustee expenses other	7,197	4,291
Rent	4,206	3,498
Insurance costs	754	1,914
Telephone/fax/email	1,612	738
Postage	2,004	2,981
Stationery	634	783
Website & Computing	3,947	5,060
Subscriptions	269	35
Sundry office expenses	4,502	463
Depreciation	988	1,059
Volunteer training & expenses	5,486	-
Accountancy & independent examination	3,022	2,929
Bank charges	1,324	4,010
Foreign currency (gains)/losses	-	-
Professional & consultancy fees	1,275	13,977
Governance costs	3,060	-
Trustees meeting costs	643	-
Trustees training	4,831	-
	<u>88,183</u>	<u>75,210</u>

9. Net Expenditure

This is stated after charging:

	2023 £	2023 £
Depreciation of tangible fixed assets – owned by the charity	988	1,059
Independent examiners remuneration – current examiner	250	250
Independent examiners fees for non-compliance services – current advisor	2,772	2,679
Independent examiners fees for non-compliance services – previous advisor	-	-
	<u> </u>	<u> </u>

No payments were made to directors or any persons connected with them during the year (2023: £Nil). No material transaction took place between the organisation and a trustee, or any person connected with them.

During the year trustees were reimbursed for travelling and other expenses totalling £7,197 (2023: £4,291).

REACH CHARITY LIMITED
(A COMPANY LIMITED BY GUARANTEE)

10. Staff Costs

Staff costs were as follows:

	2024 £	2023 £
Wages and salaries	74,024	29,024
National Insurance costs	1,706	465
Agency staff	2,296	16,940
DBS Check Fee	-	50
Pension contributions	1,620	717
	<u>79,646</u>	<u>47,196</u>

No employees received annualised emoluments in excess of £60,000.

The average monthly number of employees during the year was as follows:

	2024 No.	2023 No.
Operations	2	2
	<u>2</u>	<u>2</u>

11. Intangible fixed assets

	Database £	Total £
Cost		
As at 1 March 2023 and 29 February 2024	<u>13,740</u>	<u>13,740</u>
Amortisation		
As at 1 March 2023	13,740	13,740
Charge for the year	-	-
As at 29 February 2024	<u>13,740</u>	<u>13,740</u>
Net Book Value		
At 29 February 2024	<u>-</u>	<u>-</u>
At 28 February 2023	<u>-</u>	<u>-</u>

REACH CHARITY LIMITED
(A COMPANY LIMITED BY GUARANTEE)

12. Fixed Assets

	Recorders £	Equip ment £	Total £
Cost			
As at 1 March 2023	23,137	5,877	29,014
Additions	-	-	-
Disposals	-	-	-
As at 29 February 2024	<u>23,137</u>	<u>5,877</u>	<u>29,014</u>
Depreciation			
At 1 March 2023	10,038	2,548	12,586
Charge for the year	655	333	988
Eliminated on disposals	-	-	-
As at 29 February 2024	<u>10,693</u>	<u>2,881</u>	<u>13,574</u>
Net Book Value			
At 29 February 2024	<u>12,444</u>	<u>2,996</u>	<u>15,440</u>
At 28 February 2023	<u>13,099</u>	<u>3,329</u>	<u>16,428</u>

13. Debtors

	2024 £	2023 £
Trade debtors	-	-
Prepayments and accrued income	931	15,821
Other debtors	<u>16,836</u>	<u>13,435</u>
	<u>17,767</u>	<u>29,256</u>

14. Creditors amounts falling due within one year

	2024 £	2023 £
Trade creditors	700	-
Accruals	1,614	1,638
Deferred income (note 15)	4,058	5,297
Other creditors	<u>7,216</u>	<u>100</u>
	<u>13,588</u>	<u>7,035</u>

15. Deferred Income

Deferred income comprises amounts received for fundraising events that had not taken place at the year end.

	2024 £	2023 £
Balance as at 1 March 2023 (1 March 2022)	5,297	7,659
Amount released to income earned from charitable activities	(5,297)	(7,659)
Amount deferred in the year	<u>4,058</u>	<u>5,297</u>
Balance as at 29 February 2024 (28 February 2023)	<u>4,058</u>	<u>5,297</u>

REACH CHARITY LIMITED
(A COMPANY LIMITED BY GUARANTEE)

16. Analysis of charitable funds

	Fund balances brought forward £	Income £	Expenditure £	Transfers £	Fund balances carried forward £
Unrestricted Funds					
General funds	210,573	717,051	(331,178)	-	596,446
Total unrestricted funds	<u>210,573</u>	<u>717,051</u>	<u>(331,178)</u>	<u>-</u>	<u>596,446</u>
Designated Funds					
Designated for Ireland	14,305	-	(14,305)	-	-
Total designated funds	<u>-</u>	<u>-</u>	<u>(14,305)</u>	<u>-</u>	<u>-</u>
Restricted Funds					
Research fund	13,200	-	-	-	13,200
National Lottery Grant		9,637	(641)		8,996
Other small funds, fully spent		1,100	(1,100)		-
Total restricted funds	<u>13,200</u>	<u>10,737</u>	<u>(1,741)</u>	<u>-</u>	<u>22,196</u>
Total funds	<u>238,078</u>	<u>727,788</u>	<u>(347,224)</u>	<u>-</u>	<u>618,642</u>

Designated Fund

The **designated fund** represented funds designated for Reach Ireland.

Restricted Funds

The research fund represents funds donated by a member for use at the discretion of the trustees in furtherance of research aspect of upper limb deficiency understanding.

The National Lottery grant is for the 18-25 Pilot.

The smaller funds were £1,000 for a Scottish branch event and £100 for a Northwest branch event.

17. Analysis of net assets between funds

	Restricted Funds 2024 £	Unrestricted Funds 2024 £	Total Funds 2024 £	Total Funds 2023 £
Intangible fixed assets	-	-	-	-
Tangible fixed assets	-	15,440	15,440	16,425
Current assets	22,196	594,594	616,760	228,688
Creditors due within one year	-	(13,588)	(13,588)	(7,035)
	<u>22,196</u>	<u>596,446</u>	<u>618,642</u>	<u>238,078</u>

REACH CHARITY LIMITED
(A COMPANY LIMITED BY GUARANTEE)

18. Operating Lease Commitments

At 29 February 2024 the charity had total commitments under non-cancellable operating leases as follows:

	2024 £	2023 £
Expiry Date:		
Within 1 year	1,402	1,216
Between 2 and 5 years	1,753	3,041
After more than 5 years	<u>-</u>	<u>-</u>

19. Related Parties

There were no related party transactions in the year (2023: £Nil).

20. Controlling Party: The charitable company is controlled by the board of trustees.



Reach

life beyond limits

2023-24

(March 23 – Feb 24)

Annual Report





Contents

Section #		Page #
1	Introduction & Highlights	1
2	Chairpersons Report	2 & 3
3	Local Branches	4
4	RAW (Reach Activity Week) 2023	5
5	AFW (Annual Family Weekend) 2023	6
6	Fundraising March 2023 - February 2024	7
7	Reach Charity 5-Year Plan (2024-2029)	8-10
8	Reach Finances	11

1. Welcome to our 2023-24 Annual Report

This year was all about the amazing people who volunteer their time to help bring the Reach Community together. Volunteer Branch Coordinators, RAW Mentors and Annual Family Weekend Volunteers from all over the UK & Ireland went above and beyond to create a total of **1667 opportunities for Reach families, children and young people** to connect in person. A new Board of Trustees learnt new skills and began work to help Reach **evolve as a charity**, to sustain support for Reach children into adulthood. This year saw adults with upper limb difference (ULD) tentatively beginning to reconnect with Reach, wanting to get involved. This year saw us lay the groundwork for **a new chapter**. We haven't been this active for a while – thank you everyone for helping bring it back!



2023 Highlights

- 37 Branch events delivered across the UK & Ireland, 117.5% increase on 2022
- First ever Annual Family Weekend (AFW) in Newcastle, 55.5% attendance increase from 2022
- RAW (Reach Activity Week) 23 see's mentors new and old come together to enable and support 32 young people aged 10-17
- Reach membership increases by 17% - 704 members Feb 23, 822 members Feb 24
- The first ever Reach Retreat for 18–25-year-olds achieves funding
- Facebook engagement grows by 266% and Instagram by 896% with new Social Media Manager, Megan Bacon Evans (BE) at the helm
- Reach Trustees carefully administer the giving of a significant legacy to Reach
- Reach Trustees begin work to renew our Articles of Association.



2. Chairpersons Report 2023-24

This Reach year has been focused on managing a change process. We identified that many of our processes were outdated and needed revision.

The primary goal has been to update and replace our Articles of Association, the governing document of Reach Charity. Prior to the enactment of the Charities Act 2006, many governing documents of charities were based on company law. In time lawyers who specialise in Charities Law drew up a new CLA model suited to charities. After specialist training for our Trustees, in-depth consultation with our legal advisors, as well as with our own Branch Coordinators and members, we decided to embrace a new set of Articles of Association based on Charities Law. We will be asking you to vote to support this change this weekend.

Our focus on increased communication and support for each of the branches has yielded very positive results throughout the UK and Ireland. We have seen record numbers of meetups and activities and enthusiastic volunteers stepping up to run branches. Both parents and members with a limb difference run branches of Reach – a big change from the parent support group founded in 1978.

The Reach Team 2023-2024

Trustees

Chair - Chris Creamer
 Vice Chair - Gary Phillips
 Treasurer - Phil Robertson
 Safeguarding Lead – Julie Detheridge
 Ruth Lester OBE
 Lee Harvey
 Esther Pounder
 Amber Thacker
 Emily Tisshaw
 Steve Haynes

Ambassadors:

Alex Brooker
 Claire Cashmore MBE
 Ella Dickenson
 Melissa Johns
 Frank Letch MBE
 Briony May Williams

The Reach Team (behind the scenes)

Charity Ops Lead – Sarah-Jane Lowson
 Business Support – Ashley Blackburn
 Within Reach Editors: Max & Tom Swinhoe
 Social Media Manager: Megan Bacon-Evans
 AFW Producer: James Jones
 Events Development Volunteer: Sian Brooks
 Reach Team Volunteer: Lesley Goodfellow

Branch Coordinators 2023-24: Please see P4

The RAW Team 2023:

RAW Lead: Claire Hermon
 RAW Core Team: Esther Lees, Tony Addison,
 Tom Crow, Emily Tisshaw
 RAW Mentors 23: Fran Moylan, Chris Knox,
 Adam Richardson, Louise Devlin & Max
 Swinhoe

We had a full roster at RAW 23 at Carlton Lodge and enthusiastic feedback from 32 participants. We have already planned and anticipate increased numbers RAW 2025.

Our new young adult trustees elected to the board, as well as the motivated young adults who deliver almost all our communications have been pushing boundaries at warp speed to increase and generate new and exciting channels. The young adult group, energised by their own experiences growing up, have been meeting regularly as a Working Group online, planning new and revised forms of communications with our members and with the broad population of supporters of Reach. Watch this space.

I cannot close this Chairpersons Report without drawing attention to the economic climate in which we operate. It must be acknowledged that donations are down, not just for Reach but for the charities sector generally. Considering we have a full program of modernisation and development to benefit our members, we must always keep our eyes on the finances of Reach. Suffice to say that these ambitious developments cost money and we need to encourage members to keep funding for Reach in your minds. We haven't simply survived 46 years, we have grown and thrived. Focusing on celebrating 50 years in 2028, let's deliver on the development of Reach as a support organisation for all persons with a limb difference, children and adults. It is already paying dividends having the lived experience of our young adults "giving back" to our children. That is too valuable a resource to lose. As a membership organisation, we depend on donations to continue as a support group. Any donation, all fundraising and every initiative taken by members to generate funds for Reach Activities are greatly appreciated. You can make a difference.



3. Local Branches 2023-24:



During this year 26 volunteer Branch Coordinators and 4 volunteers (holding the fort until new Branch Coordinators could be found) enabled **353 individual Reach children** and their families to spend time together.

These people are the Reach linchpin. Without their help organising local meetups in their areas we would, except for RAW & AFW, be an online community only.

This year with their support we have been on tractors & trains, climbing, surfing, skating, balancing, bouncing, picnicking, dancing, swimming, making cupcakes, gingerbread people and... friends - **THANK YOU!**

This is the difference you made 2023-24:

"I am so happy to be a member of the Reach family and look forward to many more events."

New Reach Parent at Branch Event, January 2024.

Most valuable part of the day?

"Children getting to meet each other"

Parent at Branch event 2023

"Reachtastic!"
Young person at Spring Branch event 2023

You knocked it out of the park!



Scotland: Mags, Iain & Liz

Northern: Suzanne

Northern Ireland: Ruth & Siobhan

Yorkshire: Alexis & Rich

Northwest: Jane & Cheryl

East Midlands: Andrew & Rebecca

Ireland: Marianne, Hilary & James

West Midlands: Tracey & Jason

East Anglia: Jay & Navdeep

Three Counties: Jen

South Wales: Melissa

Gloucestershire: Sophie (with a little bit of help from Lee)

Berks & Wilts: Joanne

North London: Kavita

South London: Hannah & Emily

Kent: Hannah & Lesley (holding the fort)

Wessex: Mei

Southwest: Sarah & SJ (holding the fort)

4. RAW 2023



This year with Claires guidance we increased the number of RAW Mentors (adults with ULD volunteering their time to enable Reach young people) to 10.

5 RAW Veteran Mentors joined by 5 newbies, came together at the YHA in the Peak District for training, for the first time this included Young Peoples Mental Health training. Time together helped prepare them as a team for RAW 23.



It was always going to be strange this year because Jo wasn't there, she was missed.

The team were incredible and together, with the help of Carlton Lodge enabled a wonderful 7-day adventure for 32 young people, age 10-17 from all over the UK, some coming for the first time.



RAW 23 Feedback *the stats*

100% of families surveyed said their young person's confidence increased at RAW

100% of families surveyed said their young people's physical activity increased at RAW

100% of families surveyed said their young person's independence skills improved because of RAW

100% of young people surveyed wanted to come back next year!

RAW 23 Feedback *in your words*

"Our son has made some of his closest friendships at RAW and we know he feels more confident in himself because of them."

"Very important. Really special extended family - both the other young people and the mentors"

"Gives our son a massive confidence boost. It also means he can try a wide variety of activities (without me having to convince individual activity centres to let him do things if we were visiting just as a family)."

"Sharing some drawings K made on RAW, he came back home very happy and already said he's going next year."



RAW 25:
Sun 03 - Sun 10 Aug
Kepplewray Activity Centre,
Cumbria



BEST BITS:

Young Influencers Panel
 Good mix of speakers, nice to see Reach Youth dreaming too!
 Family session at the adventure playground
 Having exhibitors in the same room was good
 Drama Workshop/DJ Workshop
 Making new friends

WORST BITS:

Felt a bit "corporatey"
 Need more for teens in the evening
 Not enough opportunity to spend time with other families on the Saturday
 Didn't love the kid's food options
 Leaving new friends.

Learning:

This year we are running the first ever Reach Family Supper Club for families wanting to stay together and play together. This year teenagers have a special evening outing to Playzone. Some things are out of our control e.g. not enough room for exhibitors in the conference room, to compensate we have programmed in a 'Meet the Exhibitors' family session. This year we had to go theatre style for the conference because of numbers.

Thank you to the incredible people who make AFW happen every year, our MC, Mr Alastair Greener and Producer, James Jones, who together keep us on track for the whole of Saturday, our inspirational Guest Speakers who share their stories, their journeys, our exhibitors, who come and animate the space with their ideas and passion, and the people helping behind the scenes; RAW Mentors, Reach Team Volunteers, Event Photographers, Phil & Ste, Workshop Providers, Branch Coordinators, Trustees and of course - Queen of the Gala Dinner, Mrs Sian Brooks!!

5. AFW 2023

Feedback in your words

"Our First AFW, I'm sure it won't be our last! We feel so welcome"

"It was the BEST weekend! Thank you so much for all the giggles dancing, and emotional moments @brionymaybakes it was so lovely to finally meet you in person! Feeling full of gratitude coming away from our incredible community."
 iampossibleemma

"Felt like Vintage Reach"

"Being able to immediately dive into a deep conversation with someone you have never met before because of the common ground...thank you @reachcharity1 for a truly amazing weekend and for organising a magical space for these friendships to bloom."

"Amazing Weekend with our Reach family. Thanks so much everyone, see you next year."

"The weekend was our best yet (have been attending since 2015) it beat our expectations it was lovely to see new people with very young children."

This weekend was so special in a million different ways. We met families we have been speaking to online for the last 18 months in person and we all greeted each other with the biggest hug like we had known each other for a lifetime. They are just such special connections that can't be described & will last for a very long time."

"We laughed and cried in equal measures all weekend. Our emotional cups were very much filled!"

AFW 24: Portsmouth
 AFW 25: Swansea
 AFW 26: Manchester

6. Fundraising March 2023- Feb 24

Reach is supported by its community; what you do makes the difference – from climbing Three Peaks in South Wales to organising a Football Charity Day, **the way you help, is personal, caring, fun, exhausting, inspiring & incredible!**

Here are a few of the things you have been up to 2023-24: Staff at Glasswells in Ipswich paid to wear their Christmas jumpers, Durrey in Birmingham fundraised for Reach during Ramadan, George in Cheshire organised a spectacular Golf event, Theo in London asked his friends and family to donate to us instead of birthday presents.

You have run, climbed, swum, cycled, and yes even flown 100s of miles between you, in epic challenges including: The London Marathon, The Big Swim, Parkrun & a 100 Day Challenge – **Thank you!** Time for a sit down and a cup of tea!

Once you've got your breath back and/or you fancy a challenge 2024-25 click here: <https://www.reach.org.uk/run-for-reach>

You and yours have baked, crafted, raffled, and drunk a lot of coffee!! Thank you for organising all the local community fundraisers in schools, social clubs, community centres, villages halls and at offices across the UK - these events help raise awareness at the same time as raising funds for Reach - so **you are helping in two ways** – Thank you!

We also received gifts in memory of family members, sometimes Reach is named in the persons will, sometimes the family create a memorial fund – **thank you for remembering Reach at this time.**

Some of you are regular givers - your donations **underpin everything we do** – Thank you!

Trusts & Foundations awards (23-24)
The Dean Close Foundation

Elizabeth & Prince Zaiger Charitable Trust
CMS Foundation
Global Make Some Noise
Awards for All

Other types of donors, some businesses, some faith-based (brought to us by you):

HFF Civil Engineering

Opus Limited – this was a person in Scotland whose little sister was about to have an amputation, her work had a monthly sponsorship scheme for charities, and she named us, asking that the funds could be spent in Scotland - and they were, on a family day out at a water-based adventure park.

Ultra Tile

Morgan Lewis's London office

St James Church Cambridge

Holy Trinity Church, Rolleston

Finally thank you to everyone who ticked the Gift Aid box! it's easy to do and for every pound you donated the government gave us 25p!

Together you raised a massive £111391 that represents a third of our expenditure as a charity for 2023-24 – Thank you!

We know we have a job of work to do to sustain Reach into the future, there is a need now we are back running at full capacity and are wanting to grow as a charity to 'diversify our income streams'. As part of that we want to build on what our community best like to do.



We want to build an annual Reach Challenge Event which raises funds and at the same time raises awareness. We'd like to start in 2025! WATCH THIS SPACE – or better still get involved!

7. Reach Charity 5-Year Plan (2024-2029)

In late 2023 Reach was given in trust a legacy to the value of £540000. As a charity this is the biggest award that we have ever received.

The donor wasn't known to us and as such the Trustees needed to undertake careful due diligence and the Charity Commission also.

The gift couldn't have come at a better time, it means we have the capacity to plan for and grow a little as a charity.

Being ever mindful of our primary purpose; to support families with children with ULD, we want to enrich that support in partnership with our branch coordinators by developing a **regional family weekend programme** and widen our support by developing an **18-25 programme** to support young people with ULD into adulthood.

Both projects are being led by our community, both projects are being led by people that have lived experience as branch coordinators, reach parents, children and adults.

Both projects are building on what we do well and both projects are responding to need.

AFW is a much-loved event, but cost, location and event capacity mean it's not accessible to all in the Reach community.

We want to try and capture some of the community spirit that brought us Tyncae in South Wales & Patterdale in the Northwest to build a low-cost regional family weekend programme free of charge for participating families.

In 2023 Trustee and RAW Mentor, Emily Tisshaw brought the idea of an 18-25 Retreat to the Trustees.



The idea was formed by RAW Mentors who as they became young adults looking for sustained support found it wasn't there. They found their own way, and they would like to build a programme of sustained support for young adults to enable them as they find theirs.

With the support of the Trustees, Emily applied to Awards for All in 2023 to run a pilot.

This was the vision:

Reach exists to support families with upper limb difference to connect; learn and grow together as a community. The retreat will give our younger members a touchstone; a safe place to work through issues with their peers; rehearse coping strategies; develop and maintain bonds; overcome struggles and form long lasting and deep relationships with people that look and feel like them as they transition to adulthood.

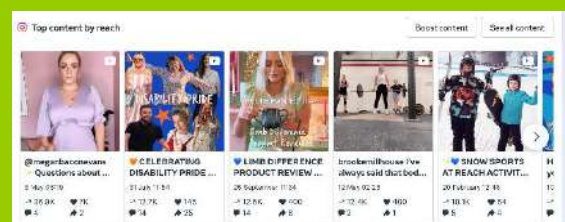
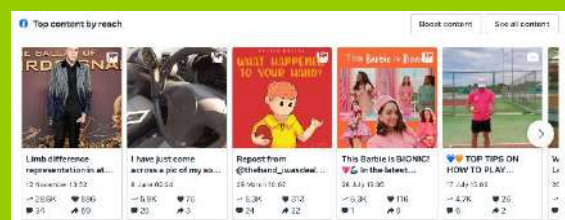
Emilys bid was successful, and the first Retreat ran April 2024.

We are currently applying to the VTCT Foundation to realise the aspirations of the Project Founders 2025-2028.

To compliment this evolution we want to **build our presence on social media** and become relevant and useful to young people with ULD in that space. Do more of what we do well, create a sense of community, a sense of belonging.

To that end Megan BE joined the Reach Team in 2023. With Megan at the helm we have seen our presence grow in 'new to us' spaces Instagram and Tik Tok, we are connecting with adults with ULD who want to join the Reach community, some were part of our community as children but then grew away and some are coming to us for the first time as adults.

Social Media Growth Stats (2023-24)



And what about your experience as **parents when your baby is born**? As we learnt with the [Early Parental Experience Survey](#) undertaken 2022, published 2024, there are still inconsistencies and gaps in terms of support and sign posting pre-birth and as babies are born.

In January 2024 we went to the Midwifery Festival in London. Thanks to Trustee Ruth Lester OBE and Research Surgical Trainee for the Early Parental Experience Survey Dr Andrew Clelland we were given the opportunity to run a workshop. Ruth was amazing in her efforts to connect with the right people to share about Reach!

During the year we circulated posters, leaflets and copies of our magazine, Within Reach, to midwifery units and Limb Centres across the UK upon request.

But it feels a bit like a drop in the ocean, so we need to think about how we sign post and help families find support.

One idea we hope to begin developing 2025-26 is to support the piloting of a new role within the NHS - a liaison nurse who can 1. Help share information across NHS Trusts 2. Support families as they find out about their babies ULD.

Another lovely idea in the very early stages of development: RAW ARTS! **A Creative Summer Camp** for young people with ULD. Using a similar model to RAW, led by Mentors with ULD, developed and delivered in partnership with organisations like [OHMI](#), and wonderful creatives who are part of our community e.g. Melissa Johns.

All great ideas to help:

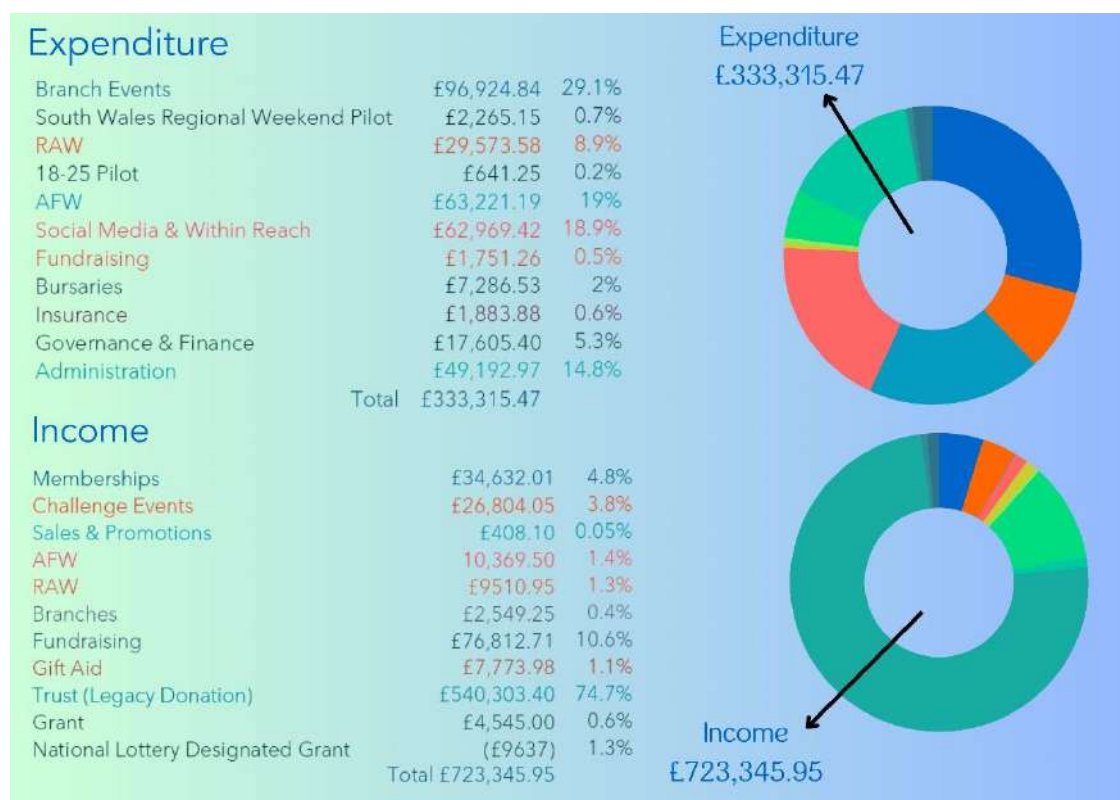
- Reach more people
- Help more families
- Support our community

Finally - We are looking toward our **50 Year Anniversary** in 2028 - how best to celebrate?

As a charity we are led by our community and want always to be responsive and inclusive - please reach out if you want to get involved.



8. Reach Finances 2023-24



Income 2022-23: £200018
 Income 2023-24 (minus Trust):
 £173,405.55 (13.3% decrease from 2022-23)

Expenditure 2022-23: £175918
 Expenditure 2023-24: £333315
 (89.5% increase from 2022-23)

Fundraised income 2022-23 = £140364
 Fundraised income 2023-24 = £108057
 (23% decrease from 2022-23)

Deficit (minus Trust) 2023-24: £160000

The Legacy given to Reach in trust in 2023 is providing ballast, but Reach like all charites across the UK is experiencing a dip in donations and we need now to diversify our income streams to sustain.

Our Plan:

Our priority is to sustain and grow branch delivery & support our online community.

We will designate funds from our reserves to this delivery.

£325000 is being deposited in 12 month and 6 month fixed term accounts 2024-25. Interest will be used for new project work.

All of the project work described pages 7-9 is subject to funding. We are seeking support from Trusts & Foundations to help us realise this work.

We have a working group looking to increase Corporate Social Responsibility funding of Reach.

We are activitely supporting members fundraising on our behalf.

We aspire to build a new annual Reach challenge event to generate income for AFW and the 18-25 Project.



Reach Charity Ltd
Company Limited by Guarantee: 07054164
Registered Charity in England & Wales: 1134544
Registered Charity in Scotland: SC049805

Registered Address:
Office 4, The Library Rooms, 1st Floor,
59 High Street, Totnes, Devon, TQ9 5PB