



## **Trustees' Annual Report for the period**

**From 1<sup>st</sup> April 2021 to 31<sup>st</sup> March 2022**

**Charity name: CHRIST APOSTOLIC CHURCH (CAC) INTERNATIONAL**

**Charity registration number: 1134340**

### **Objectives and Activities**

	SORP reference	
Summary of the purposes of the charity as set out in its governing document	Para 1.17	<b>1. To advance the Christian religion in Hackney and other parts of the UK and the world</b> <b>2. The relief of financial need, the advance of education and the promotion of good health and supporting other charities.</b>
Summary of the main activities in relation to those purposes for the public benefit, in particular, the activities, projects or services identified in the accounts.	Para 1.17 and 1.19	<b>1. Small Donations to support members and other charities in need</b> <b>2. Holding of Prayer meetings sermons, lectures to educate and encourage members to make better choices</b> <b>3. Provision of Counselling and mediation services to solve everyday problems of members</b>
Statement confirming whether the trustees have had regard to the guidance issued by the Charity Commission on public benefit	Para 1.18	

### **Additional information (optional)**

You may choose to include further statements where relevant about:

	SORP reference	
Policy on grant making	Para 1.38	
Policy on social investment including program related investment	Para 1.38	
Contribution made by volunteers	Para 1.38	<b>In monetary terms?? (??)</b> <b>In Service: Volunteers helped in supporting / caring for children and the aged. They also assisted in organising events to enlighten members</b>

Other		
-------	--	--

## Achievements and Performance

	SORP reference	
Summary of the main achievements of the charity, identifying the difference the charity's work has made to the circumstances of its beneficiaries and any wider benefits to society.	Para 1.20	<p><b>2. Our leaders at the local levels have provided Counselling and mediation services to solve everyday problems of members in need with home visits, food donation and so on</b></p> <p><b>3. In addressing the spiritual needs of members, we have held Prayer meetings, sermons, lectures to educate and encourage members to make better choices in life. It is evident that these activities have impacted the lives of the less privileged within the Charity.</b></p>

### Additional information (optional)

You may choose to include further statements where relevant about:

Achievements against objectives set	Para 1.41	<b>As Above (1.20)</b>
Performance of fundraising activities against objectives set	Para 1.41	<b>Main fund-raising activities have included weekly silver collections, monthly tithe payments and annual harvest.</b>
Investment performance against objectives	Para 1.41	
Other		

## Financial Review

Review of the charity's financial position at the end of the period	Para 1.21	
Statement explaining the policy for holding reserves stating why they are held	Para 1.22	
Amount of reserves held	Para 1.22	
Reasons for holding zero reserves	Para 1.22	
Details of fund materially in deficit	Para 1.24	
Explanation of any uncertainties about the charity continuing as a going concern	Para 1.23	

### Additional information (optional)

You may choose to include further statements where relevant about:

The charity's principal sources of funds (including any fundraising)	Para 1.47	<b>1. Weekly collections</b> <b>2. Monthly tithes</b> <b>3. Mid-Year Harvest</b> <b>4. Annual Harvest</b> <b>5. Gift Aid proceeds</b> <b>6. Support from Mother Church -Ghana</b> <b>7. Other Contributions from members</b>
Investment policy and objectives including any social investment policy adopted	Para 1.46	<b>None</b>
A description of the principal risks facing the charity	Para 1.46	<b>Some members and trustees are breaking away from the main church to form their own church.</b>
Other		

## Structure, Governance and Management

Description of charity's trusts:		
Type of governing document (trust deed, royal charter)	Para 1.25	<b>Constitution adopted on 30th May 2008 and amended on 27th December 2009</b>
How is the charity constituted? (e.g. incorporated association, CIO)	Para 1.25	
Trustee selection methods including details of any constitutional provisions e.g. election to post or name of any person or body entitled to appoint one or more trustees	Para 1.25	<b>Trustees are appointed and Executive Committee Members are elected. The Terms of Appointment and election are set out in the Constitution</b>

### Additional information (optional)

You may choose to include further statements where relevant about:

Policies and procedures adopted for the induction and training of Trustees	Para 1.51	
The charity's organisational structure and any wider network with which the charity works	Para 1.51	<b>1. The Trustees</b> <b>2. Executive Committee / UK Management</b> <b>3. Local Management</b> <b>4. Local Organisational Leaders</b>  <b>All work in consultation with National Executive Council in Ghana</b>
Relationship with any related parties	Para 1.51	<b>1. National Executive Council in Ghana</b> <b>2. Charities Commission</b>
Other		

## Reference and Administrative details

Charity name	<b>Christ Apostolic Church (CAC) International</b>
Other name the charity uses	<b>None</b>
Registered charity number	<b>1134340</b>
Charity's principal address	<b>167 Edge Lane, Droylsden - Manchester M43 6BE</b>

## Names of the charity trustees who manage the charity

	Trustee name	Office (if any)	Dates acted if not for whole year	Name of person (or body) entitled to appoint trustee (if any)
1	Rev. Thomas Appiah Kubi	Chairman	2009	
2	Mrs. Elizabeth Akosua Nyame	Secretary	1 <sup>st</sup> November 2021	
3	Mr. Kwaku Richard Abebrese	Member	13 <sup>th</sup> December 2018	
4	Mr. Yaw Frimpong Akosah	Member	22 <sup>nd</sup> August 2019	
5	Ms. Laurretta Anokye	Member	12 <sup>th</sup> March 2020	
6				
7				
8				
9				
10				
11				
12				
13				
14				
15				
16				
17				
18				
19				
20				

## Corporate trustees – names of the directors at the date the report was approved

Director name		
N/A		

## Name of trustees holding title to property belonging to the charity

Trustee name	Dates acted if not for whole year	

## Funds held as custodian trustees on behalf of others

Description of the assets held in this capacity	N/A
Name and objects of the charity on whose behalf the assets are held and how this falls within the custodian charity's objects	N/A
Details of arrangements for safe custody and segregation of such assets from the charity's own assets	N/A

### Additional information (optional)

#### Names and addresses of advisers (Optional information)

Type of adviser    Name                      Address

ACCOUNTANT	Emmanuel Hackman	24 Barnmead Road Dagenham, Essex RM9 5DU

#### Name of chief executive or names of senior staff members (Optional information)

Rev Thomas Appiah Kubi	Ministers of religion

## Exemptions from disclosure

Reason for non-disclosure of key personnel details

--

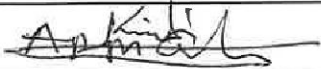
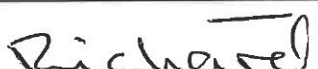
## Other optional information

--

## Declarations

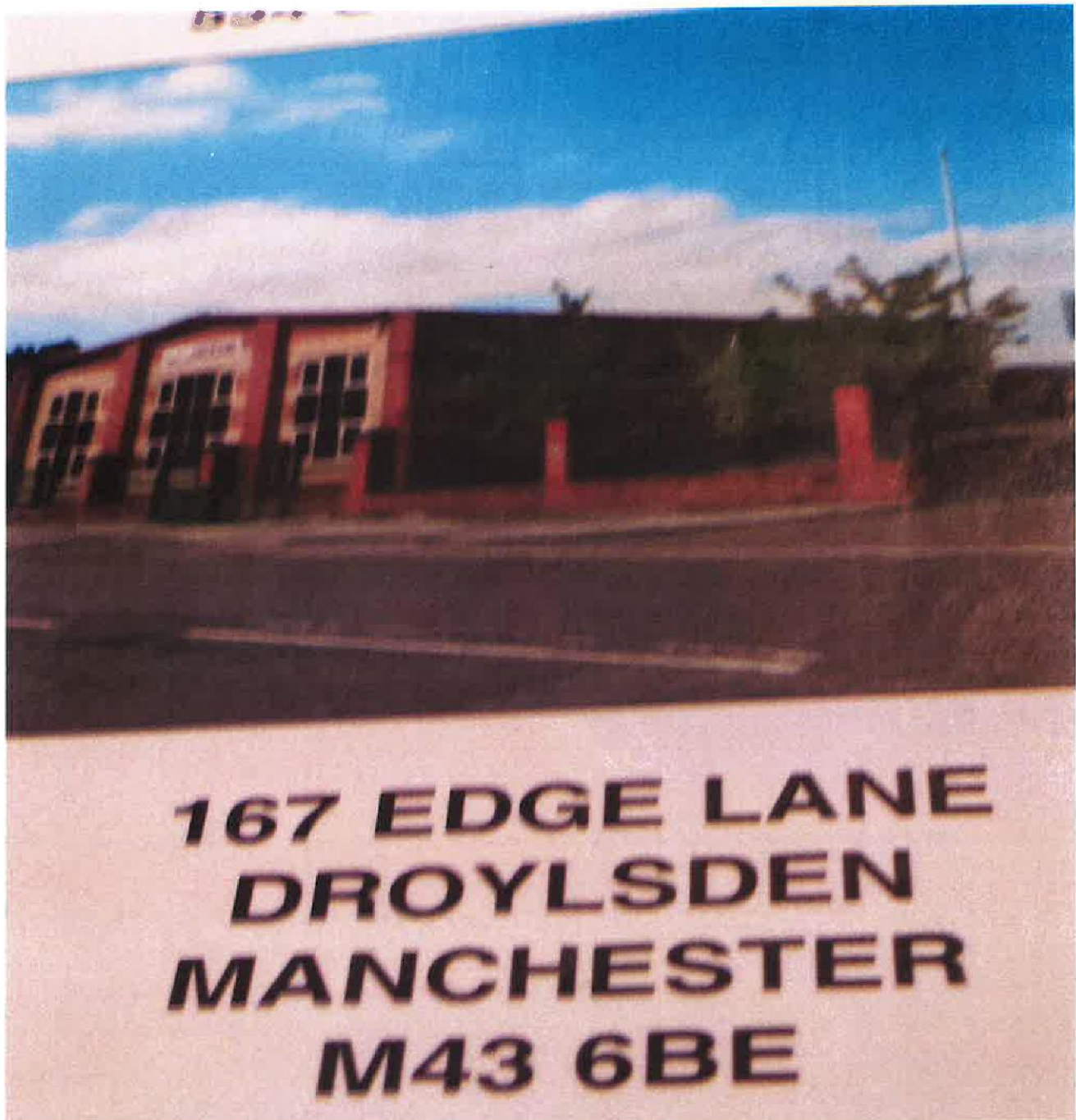
The trustees declare that they have approved the trustees' report above.

Signed on behalf of the charity's trustees

Signature(s)		
Full name(s)	Rev. Thomas Appiah Kubi	Mr Richard Abebrese
Position (eg Secretary, Chair, etc)	Chairman	Member
Date	10/03/2023	



# CHRIST APOSTOLIC CHURCH (CAC) INTERNATIONAL



ANNUAL REPORT AND ACCOUNTS FOR THE YEAR  
ENDED 31<sup>ST</sup> MARCH 2022



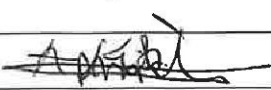
## Section A

## Statement of financial activities

Recommended categories by activity	Unrestricted funds	Restricted income funds	Endowment funds	Total funds	Prior year funds
	£	£	£	£	£
	F01	F02	F03	F04	F05
<b>Incoming resources (Note 3)</b>					
<b>Income and endowments from:</b>					
Donations and legacies	22,934	-	-	22,934	33,441
Charitable activities	137,862	-	-	137,862	115,198
Separate material item of income	-	-	-	-	-
Other	-	-	-	-	-
<b>Total</b>	160,796	-	-	160,796	148,639
<b>Resources expended (Note 6)</b>					
<b>Expenditure on:</b>					
Raising funds	-	-	-	-	-
Charitable activities	123,372	3,239	-	126,611	85,205
Separate material item of expense	-	-	-	-	-
Other	-	-	-	-	-
<b>Total</b>	123,372	3,239	-	126,611	85,205
<b>Net income/(expenditure) before investment gains/(losses)</b>	37,424	- 3,239	-	34,185	63,434
Net gains/(losses) on investments	-	-	-	-	-
<b>Net income/(expenditure)</b>	37,424	- 3,239	-	34,185	63,434
<b>Extraordinary items</b>	-	-	-	-	-
<b>Transfers between funds</b>	-	-	-	-	-
<b>Other recognised gains/(losses):</b>					
Gains and losses on revaluation of fixed assets for the charity's own use	-	-	-	-	-
Other gains/(losses)	-	-	-	-	-
<b>Net movement in funds</b>	37,424	- 3,239	-	34,185	63,434
<b>Reconciliation of funds:</b>					
Total funds brought forward	272,359	127,771	-	400,130	336,696
<b>Total funds carried forward</b>	309,783	124,532	-	434,315	400,130

## Section B

## Balance sheet

	Unrestricted funds £ F01	Restricted income funds £ F02	Endowment funds £ F03	Total this year £ F04	Total last year £ F05
<b>Fixed assets</b>					
<b>Intangible assets</b>	-	-	-	-	-
<b>Tangible assets</b> (Note 14)	25,194	454,503	-	479,697	490,905
<b>Heritage assets</b>	-	-	-	-	-
<b>Total fixed assets</b>	25,194	454,503	-	479,697	490,905
<b>Current assets</b>					
<b>Debtors (Note 19)</b>	22,934	-	-	22,934	-
<b>Cash at bank and in hand (Note 24)</b>	58,485	-	-	58,485	49,249
<b>Total current assets</b>	81,419	-	-	81,419	49,249
<b>Creditors: amounts falling due within one year</b> (Note 20)	12,250	-	-	12,250	14,972
<b>Net current assets/(liabilities)</b>	69,169	-	-	69,169	34,277
<b>Total assets less current liabilities</b>	94,364	454,503	-	548,867	525,182
<b>Creditors: amounts falling due after one year</b> (Note 20)		114,552	-	114,552	125,052
<b>Provisions for liabilities</b>	-	-	-	-	-
<b>Total net assets or liabilities</b>	94,364	339,951	-	434,315	400,130
<b>Funds of the Charity</b>					
<b>Endowment funds (Note 27)</b>	-			-	-
<b>Restricted income funds (Note 27)</b>		124,532		124,532	127,771
<b>Unrestricted funds</b>	309,783		-	309,783	272,359
<b>Revaluation reserve</b>				-	
<b>Total funds</b>	309,783	124,532	-	434,315	400,130
Signed by one or two trustees on behalf of all the trustees	Signature		Print Name		Date of approval dd/mm/yyyy
			Rev Thomas Appiah-Kubi		18/3/23
	Richard		Richard Abebrese		19/3/23

## Note 3

## Analysis of income

	Analysis	Unrestricted funds	Restricted income funds	Endowment funds	Total funds £	Prior year £
<b>Donations and legacies:</b>	Donations and gifts	-	-	-	-	-
	Gift Aid	22,934	-	-	22,934	33,441
	Legacies	-	-	-	-	-
	General grants provided by government/other charities	-	-	-	-	-
	Membership subscriptions and sponsorships which are in substance donations	-	-	-	-	-
	Donated goods, facilities and services	-	-	-	-	-
	Other	-	-	-	-	-
	<b>Total</b>	22,934	-	-	22,934	33,441
<b>Charitable activities:</b>	Harvest	33,326	-	-	33,326	1,943
	Members' Tithes & Offering	87,273	-	-	87,273	107,539
		-	-	-	-	-
	Other	17,263	-	-	17,263	5,716
	<b>Total</b>	137,862	-	-	137,862	115,198
<b>Other trading activities:</b>		-	-	-	-	-
		-	-	-	-	-
	Other	-	-	-	-	-
	<b>Total</b>	-	-	-	-	-
<b>Income from investments:</b>	Interest income	-	-	-	-	-
	Dividend income	-	-	-	-	-
	Rental and leasing income	-	-	-	-	-
	Other	-	-	-	-	-
	<b>Total</b>	-	-	-	-	-
<b>Separate material item of income:</b>		-	-	-	-	-
		-	-	-	-	-
		-	-	-	-	-
	<b>Total</b>	-	-	-	-	-
<b>TOTAL INCOME</b>		160,796	-	-	160,796	148,639

Note 6

Analysis of expenditure

		Unrestricted funds	Restricted income funds	Total funds £	Prior year £
Exp on charitable activities	Analysis				
	Wages & Salaries	2,125	-	2,125	2,845
	Printing and Stationery	178	-	178	564
	Outreach & Evangelism	14,880	-	14,880	8,540
	Refreshment at Meetings	389	-	389	533
	Hospitality	13,373	-	13,373	4,118
	Pastoral Care	6,894	-	6,894	6,407
	Donations	6,988	-	6,988	4,102
	Accountancy Fees	4,022	-	4,022	4,025
	Legal & Professional	4,649	-	4,649	4,825
	Children & Youth Training & Activities	16,872	-	16,872	11,696
	Light & Heat	4,818	-	4,818	1,703
	Other Resources Expenses		3,239	3,239	2,285
	Repairs & Maintenance	3,656	-	3,656	1,041
	Depreciation	11,208	-	11,208	12,783
	Travelling & Motor Running	3,837	-	3,837	2,503
	Sundries	948	-	948	662
	Insurances (Motors & Buildings)	7,884	-	7,884	271
	Mortgage Interest	7,073	-	7,073	7,073
	Hall Hire & Establishment Expenses	13,578	-	13,578	9,229
	<b>Total expenditure on charitable activities</b>	123,372	3,239	126,611	80,377
Other		-	-	-	-
	<b>Total other expenditure</b>	-	-	-	-
<b>TOTAL EXPENDITURE</b>		123,372	3,239	126,611	80,377

**Note 10** **Details of certain items of expenditure**

**10.1 Fees for examination of the accounts**

*Please provide details of the amount paid for any statutory external scrutiny of accounts and other services provided by your independent examiner. If nothing was paid please enter '0' in the appropriate box(es).*

**Independent examiner's fees**

**Assurance services other than audit or independent examination**

**Tax advisory fees**

**Other fees (for example: financial advice, consultancy, accountancy services) paid to the independent examiner**

<b>This year £</b>	<b>Last year £</b>
450	450

**Note 11** **Paid employees**

*Please complete this note if the charity has any employees.*

**11.1 Staff Costs**

**Salaries and wages**

**Social security costs**

**Pension costs (defined contribution scheme)**

**Other employee benefits**

**Total staff costs**

<b>This year £</b>	<b>Last year £</b>
2,125	2,845
-	-
-	-
2,125	2,845



**Note 14 Tangible fixed assets***Please complete this note if the charity has any tangible fixed assets***14.1 Cost or valuation**

	Freehold land & buildings	Other land & buildings	Plant, machinery and motor vehicles	Fixtures, fittings and equipment	Total
	£	£	£	£	£
At the beginning of the year	490,924	-	197,741	-	688,665
Additions		-		-	-
Revaluations	-	-	-	-	-
Disposals	-	-	-	-	-
Transfers *	-	-	-	-	-
At end of the year	490,924	-	197,741	-	688,665

**14.2 Depreciation and impairments**

**Basis	SL or RB	SL or RB	SL or RB	SL or RB	SL or RB	Straight Line ("SL") or Reducing Balance ("RB")
** Rate	1%		20%			

At beginning of the year	31,512	-	166,248	-	197,760
Disposals	-	-		-	-
Depreciation	4,909	-	6,299	-	11,208
Impairment	-	-	-	-	-
Transfers*	-	-	-	-	-
At end of the year	36,421	-	172,547	-	208,968

**14.3 Net book value**

Net book value at the beginning of the year	459,412	-	31,493	-	392,799
Net book value at the end of the year	454,503	-	25,194	-	479,697



**Note 20 Creditors and accruals**

*Please complete this note if the charity has any creditors or accruals.*

**20.1 Analysis of creditors**

	Amounts falling due within one year		Amounts falling due after more than one year	
	This year £	Last year £	This year £	Last year £
Accruals for grants payable	-	-	-	-
Bank loans and overdrafts	10,500	10,500	114,552	125,552
Trade creditors	1,300	4,022	-	-
Payments received on account for contracts or performance-related grants	-	-	-	-
Accruals and deferred income	450	450	-	-
Taxation and social security	-	-	-	-
Other creditors	-	-	-	-
<b>Total</b>	<b>12,250</b>	<b>14,972</b>	<b>114,552</b>	<b>125,052</b>

**Note 24 Cash at bank and in hand**

	This year £	Last year £
Short term cash investments (less than 3 months maturity date)	-	-
Short term deposits	-	-
Cash at bank and on hand	58,485	49,249
Other	-	-
<b>Total</b>	<b>58,485</b>	<b>49,249</b>

## Independent examiner's report on the accounts



**CHARITY COMMISSION  
FOR ENGLAND AND WALES**

### Section A

### Independent Examiner's Report

**Report to the trustees/  
members of**

Christ Apostolic Church International (CAC)

**On accounts for the  
year ended**

31<sup>st</sup> March 2022

**Charity no  
(if any)**

1134340

**Set out on pages**

1-7

**Respective  
responsibilities of  
trustees and examiner**

The charity's trustees are responsible for the preparation of the accounts. The charity's trustees consider that an audit is not required for this year under section 144 of the Charities Act 2011 ("the Charities Act") and that an independent examination is needed. The charity's gross income did not exceed £250,000 due to the COVID-19 and for consistency I am qualified to undertake the examination by being a qualified member of [Association of Chartered Certified Accountants].

It is my responsibility to:

- examine the accounts under section 145 of the Charities Act,
- to follow the procedures laid down in the general Directions given by the Charity Commission (under section 145(5)(b) of the Charities Act, and
- to state whether particular matters have come to my attention

**Basis of independent  
examiner's statement**

My examination was carried out in accordance with general Directions given by the Charity Commission. An examination includes a review of the accounting records kept by the charity and a comparison of the accounts presented with those records. It also includes consideration of any unusual items or disclosures in the accounts, and seeking explanations from the trustees concerning any such matters. The procedures undertaken do not provide all the evidence that would be required in an audit, and consequently no opinion is given as to whether the accounts present a 'true and fair' view and the report is limited to those matters set out in the statement below.

**Independent  
examiner's statement**

In connection with my examination, no material matters have come to my attention (other than that disclosed below \*) which gives me cause to believe that in, any material respect:

- the accounting records were not kept in accordance with section 130 of the Charities Act; or
- the accounts did not accord with the accounting records; or
- the accounts did not comply with the applicable requirements concerning the form and content of accounts set out in the Charities (Accounts and Reports) Regulations 2008 other than any requirement that the accounts give a 'true and fair' view which is not a matter considered as part of an independent examination.

I have come across no other matters in connection with the examination to which attention should be drawn in this report in order to enable a proper understanding of the accounts to be reached.

*\* Please delete the words in the brackets if they do not apply.*

**Signed:**



**Date:**

19/03//2023

**Name:**

Charles Agyeman

**Relevant professional  
qualification(s) or body  
(if any):**

Association of Chartered Certified Accountants

**Address:**

64 Hainault Road,

Chigwell, Essex

IG7 5DQ