



St James' & St Luke's
Church Glossop

**Welcoming all
to walk with Jesus**

**Report to the
Annual Parochial
Church Meeting
for the year ended
31 December 2025**

Church Office:

The Vineyard, 18-20 Charlestown Road, Glossop SK13 8JN

01457 853330

www.whitfieldparish.org

Charity Number 1134145

Vicar's Report

Rev Chris Neilson

Hebrews 10:23-25a *“²³ Let us hold unswervingly to the hope we profess, for he who promised is faithful. ²⁴ And let us consider how we may spur one another on toward love and good deeds, ²⁵ not giving up meeting together, as some are in the habit of doing, but encouraging one another”*

Faithful Church

I love God's Church and I am privileged to share this part of it with so many brilliant and faithful people. My over-whelming feeling as I write this report is of so many people in this parish who give, serve, pray, encourage and love one another. This is the church and may our fellowship of love and good works continue and flourish. I know people pray for me, amongst many other things, which blesses and humbles me more than anyone can know.

We have a church of faithful people. I could mention many but need to pay particular attention to Hilary Collard and Martin Galvin in all the hard work and humble support they have gifted to this church as wardens, aiding my settling in the parish more than I could ever deserve. Thank you as you step aside from your roles this year.

I remember particularly some faithful and dearly loved church family members who we have lost this year. Let us all continue to “Welcome all to Walk with Jesus”, as they did.

I have seen faithfulness in the generosity of folk, as our giving has increased again. Turning concern into celebration.

God, the Holy Spirit, has been faithful in drawing new people to our church. Talk of a ‘quiet revival’ in the church is not bypassing ourselves. As individuals are being drawn to faith and church, looking for hope and faith in Jesus, I pray that we can faithfully witness to them and support them to walk with Jesus in our fellowship.

Activities

There are lots of different activities in our churches, supported by a bunch of good and faithful people.

Our Growth Groups have been supported by Martin Dowland's very helpful notes and faithful folk who lead these groups. Our Growth Groups are admired by other churches in Glossopdale, and we will explore how we may develop a network of growth groups with the other churches in the next year.

We continue to have strong relationships with our mission partners. Quarterly visits help us to celebrate their successes and stand with them in support and prayer as they work to see God's kingdom come.

Vicar's Report

Continued....

We seek to grow younger as a congregation, investing in young peoples and family work. We thank Rebecca Wilson for all her support as she completes her second year of training. Kingdom Kids on Sunday, 6:30 kids in the week, Roots and TnT is a busy programme. We need to work more on youth discipleship and build on the promise of The Ark and Messy Church at Dinting. We will work with other churches in the valley on the wider Growing Faith work to do this.

Coffee Pot's warm and welcoming space has built and consolidated relationships and supported other work in the parish. Whitfield Café continues to reach out to community folk locally and Grace Kitchen serves those who need some extra support. These all help us with our vision to serve our community. Fresh people, vision, ideas and resources will help to sharpen our focus and support further growth.

Eco church's bronze award is a huge encouragement for a project that I hope will continue to flourish and grow (forgive the pun) as it complements our witness and broader expression of mission.

Church Growth

New people, new team and more folk coming to know Jesus will require us to focus and co-ordinate our efforts to capitalise on the faithful service and generosity of the parish over the year. I'd like to see more growth with The Ark, a new expression of worship for families and young people, a deepening of fellowship with more small groups, working more with our fellow churches in the valley and seeing more people make first steps of faith in our Start Courses. I look forward to establishing a new team and new leaders in many areas of our activity and witness, which I hope will create new avenues to welcome more to walk with Jesus.



Church Warden's Report

Hilary Collard and Martin Galvin

It has been a privilege to serve as Church Wardens during 2025, a year in which faithful commitment has both encouraged and supported us. In 2024 Chris embarked upon the final year of his renewable term of office and we anticipated the appointment of two further stipendiary clergy in the valley. The Bishop of Derby was delighted to announce Chris' appointment as Priest-in-Charge of Whitfield on a permanent basis, taking effect on 25th September. This was immediately followed by the licensing of David Ridley at Glossop Parish Church on 27th September (with responsibility for All Saints and St Andrew's, Hadfield) and Laura Neilson at Holy Trinity on 23rd November (taking part-time responsibility at Dinting and St John's, Charlesworth). With a full complement of clergy, the Diocese is now embarking on necessary legal changes whereupon they will become incumbents rather than priests-in-charge. It is our expectation that, with a team of ordained ministers in place in Glossopdale, Chris will be able to focus more on Whitfield Parish whilst collaborating with David and Laura when appropriate and practicable.

Whilst giving thanks for these significant appointments we were saddened to lose Suzanne Gregory, our Parish Administrator for over four years. Having been offered a full-time teaching job, she left at the end of November with our good wishes and thanks, and the recruitment process began to appoint someone new to the role. We were delighted to see Sue Clapham appointed early in the New Year. On the subject of administration, the decision was taken to replace Church Suite with iKnowChurch as our church management software because everything is included in the one package and iKnowChurch links to *A Church Near You*, which is where St James' and St Luke's now have individual websites. In the coming months we will all need patience and understanding as we become accustomed to significant changes relating to parish administration.

We are grateful to all who assist in leading worship. Special thanks go to those who prepare the churches, arrange flowers, serve refreshments, and support our liturgy week by week. The prayer life of the parish continues throughout services, meetings and home groups, which remain an important source of fellowship and spiritual growth. Daily readings and prayer reflections are now posted on WhatsApp; weekly prayer meetings take place in St Luke's on Monday mornings; our four main mission partners join us annually to share and receive prayer and a parish prayer day was organised on 22nd November. St James' is now open for an hour on Fridays for private prayer and contemplation and a Start Course has been running for those wanting to think more deeply about life, ask questions or search for something more.

Pastoral care remains at the heart of our calling. Clergy and lay members have faithfully visited the sick, elderly, and housebound. We give thanks for those who coordinate meals, transport and practical support where needed, both in private residences and care homes. Our churches continue to serve the wider community through baptisms, weddings and funerals, each offering an opportunity to share God's love at significant moments in people's lives.

Church Warden's Report

Continued...

It has been particularly sad to report the loss of several long-standing members, and personal friends, from our congregations during this year and we continue to pray for and offer support to their families.

Community events —including the Easter Peg Hunt, Glossfest 25, Family Fair for Cystic Fibrosis (organised by a church member), Whitfield Community Fun Day, Well Dressing and Lantern Parade and Christmas Carols in Norfolk Square — have strengthened our presence in the parish and the town. Furthermore, activities and events in the Vineyard and both churches, booked by various organisations, provided welcoming spaces for many and opportunities for us to grow relationships and extend invitations to church events and services. We engaged further with the neighbours of St James', and particularly those who use the footpath through the churchyard, by conducting a survey and gained the A Rocha UK Eco Church Bronze award at each church after building bug hotels amongst other required environmental goals.

Maintaining historic buildings is an ongoing challenge and the care of our churches remains a significant responsibility for us and the PCC, who meet bi-monthly to oversee the worship, mission, finance and fabric of the parish. We would like to thank all PCC members for their thoughtful contribution, diligence and commitment and extend our sincere gratitude to all volunteers who serve quietly and faithfully behind the scenes.

Ecclesiastes 3:1 says, “for everything there is a season” and, as Chris announced at last year's APCM, our term as Churchwardens is drawing to a close and we are stepping down at this year's APCM. So, we complete our report as we started by saying it has indeed been a privilege to serve the church in this capacity for the last 3-4 years. We are grateful to have been given this opportunity and thankful for the love, prayer and support we have received during that time.

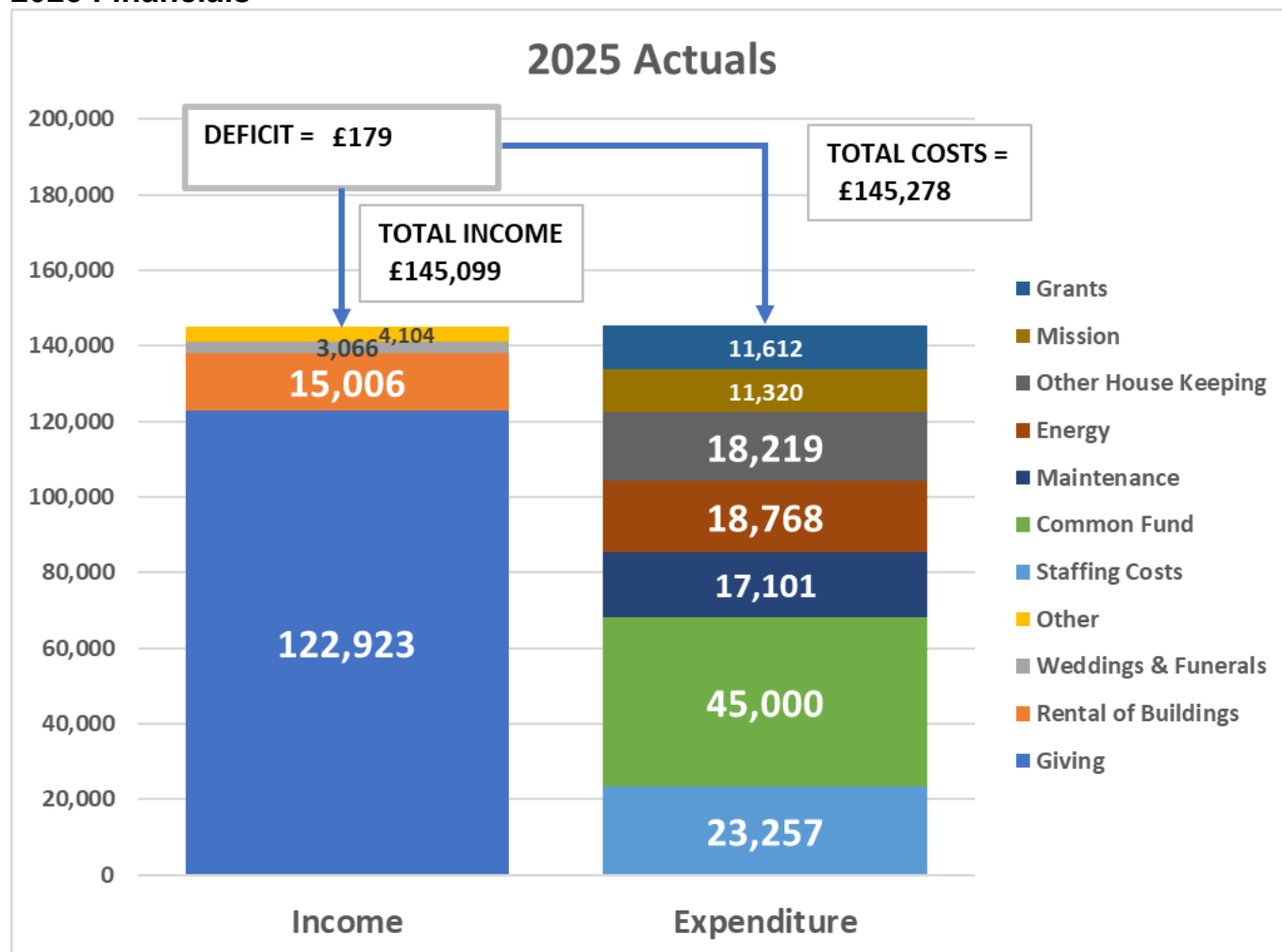
Romans 12:6 “We all have different gifts, according to the grace given to us.... if it is to serve, then serve....”



Treasurers Report

Andy Hackett

2025 Financials



Figures per Management Accounts

In our first outlook for 2025 our finances were looking familiar to the last few years with an initially challenging picture. However, with the sharing of our financial position, we were blessed with continuing generosity from our congregations that together with gift aid tax relief resulted in a giving amount of £122,923. Together with rental and other income, we had a total income of £145,099. Our total expenditure was £145,278 as detailed above which was an increase of £9,263 versus 2024. These cost increases came from our commitment to increase our Common Fund payment by £5,000 versus 2024 to get towards the requested amount and an increase in costs in relation to our Youth Ministry work.

Overall, this resulted in a small deficit of £179 for the full year ending 31st December 2025. Please note that in the financial statements there is a slightly bigger deficit due to a lower amount of gift aid accrued in 2025 vs 2024.

Treasurers Report

Continued...

As a result of this deficit, our general (unrestricted) cash reserves at the end of 2025 reduced slightly from £73,122 to £72,944. The Charity Commission recommends holding 3 months of expenditure in our general reserves which equates to £39,000.

More detailed figures relating to 2025 can be found in the Financial Statements for the year ended 31st December 2025 within this overall report.

Looking forward to 2026 and 2027

Giving is currently expected to slightly increase over the next 2 years following the commitments made by many of our regular donors to our Pledge Day in November 2025.

We have worked hard in the last few years to reduce our costs, but there are now fewer options. The new heating system in St Luke's has yielded faster heat up times and lower energy costs per session and a warmer church, so even with more activities happening in St Luke's we have kept our costs similar year on year. We are continuing to slowly increase the Common Fund that we pay to the Diocese by £5,000 per year to get closer to the requested amount.

Overall, for 2026, we are currently forecasting a deficit of £7,000 and for 2027 a deficit of £12,000. On these current forecasts, our reserves will reduce to £54,000 at the end of 2027 which, fortunately, is still higher than 3 months of costs of £40,000 as guided by the Charity Commission. As such, to break-even giving will need to increase by 8.9% during the next 2 years which could include new giving.

Whilst we are in a significantly better position than where we were 3 years or so ago, we still need to grow in numbers, both financially and in those coming to know and worship Jesus, and to grow spiritually and missionally. The PCC thanks everyone for their generosity, help and support in getting us to this improved position.

	2025 Actuals	2026 Latest Forecast	2027 Latest Forecast
Giving Income	£ 123k	£129k	£129k
Other Income	£ 22k	£ 20k	£ 20k
Total Income	£ 145k	£149k	£149k
Total Costs	£145k	£156k	£161k
Deficit	(£ 0k)	(£ 7k)	(£ 12k)
Reserves	£73k	£66k	£54k

Figures per Management Accounts

Grants Report

Andy Hackett

In 2025, £500 was raised in grants. These funds are restricted solely for the usage they were given. Knowing church funds are increasingly tight and seeing that funding was still available for community work, the grant application secured enables Grace Kitchen to continue to be sustainable into the future and to enable this ministry to grow and expand further to help those who are struggling in our community.

Below is a table showing the source of grants received, the amount and for which area of mission:

Source of Grant	Amount	Mission Area
Neighbourly (Sainsburys)	£ 500	Community Support Grant for Grace Kitchen

PCC Report

Elaine Richardson

Whitfield PCC has continued to conduct its business effectively whilst retaining an atmosphere of laughter and fun. In 2025 we reviewed and developed a range of policies and procedures that ensure we follow the Charity Commission best practice and have safe and robust arrangements for the work we do in our community. We continued to agree arrangements that make good use of our buildings and supported the installation of the new heating system in St Luke's Church. We also started investigations as to the most appropriate arrangements for the Trusts that hold responsibility for the Vineyard and Church House. Our adoption of our environmental policy and the work that we supported in our churchyards has started our journey to Eco Church awards.

We were delighted to be able to confirm to the Archdeacon that we supported ending the interim arrangements on which Chris Neilson had been appointed and the licensing of him as full time stipendiary permanent Priest in Charge. We have also fed into discussions around the arrangements for Glossopdale and are pleased to be able to support Chris in working with the two new appointments to Dinting and Charlesworth and St Andrew's and Old Glossop.

We have also supported the development of 'The Ark', a Toddler Church initiative at St Luke's and the use of social media to reach younger adult members of the community.

We met every other month with one extraordinary meeting in March, and published the agenda for our meetings in both churches in advance with the draft minutes of meetings also displayed.

We hope that the business we have conducted in 2025 has helped our parish grow through **Welcoming All to Walk with Jesus**.

At the APCM in 2025 we said goodbye to three members, with two members being re-elected and one new member joining as Deanery Synod representative. Following the APCM Heather Kindleysides was appointed to the role of PCC Secretary, Andy Hackett to Treasurer and Elaine Richardson to Lay Vice chair.

Our current membership is below and at the APCM in 2026 we have seven places up for election including three Deanery Synod members.

Post	Name	Term Length
Priest In Charge	Chris Neilson	Ex-Officio
Curate	Vacant	Ex-Officio
Warden	Hilary Collard	2025-2026
Warden	Martin Galvin	2025-2026
Deanery Synod	Heather Kindleysides	2023-2026
Deanery Synod	Christine Peters	2025-2026
Deanery Synod	Vacancy	2025-2026
PCC	Elaine Richardson	2023-2026
PCC	Joanne Swindells	2023-2026
PCC	Sheila Humphrey	2023-2026
PCC	Christopher Bowes	2024-2027
PCC	Duncan Edge	2024-2027
PCC	Jean Burston	2024-2027
PCC	Matthew Gregory	2024-2027
PCC	Andy Hackett	2025-2028
PCC	Ann Williams	2025-2028
PCC	Vacancy	

We want to thank all those that have served on the PCC in 2025 and look forward to another fruitful year in 2026. We encourage you all to read the PCC agenda and minutes and talk to any PCC member if you have any queries or wish anything to be raised.

Safeguarding Report

Tracey Fellows – Parish Safeguarding Officer (PSO)

‘Safeguarding is everybody’s business – it is Gospel work’ quoted from the Church of England Safeguarding basic and foundation training modules.

Safeguarding is about having the DNA and heart attitude of Jesus towards the safety and protection of the young and the vulnerable in our churches. It is not just a tick box exercise but a central theme and an essential aspect of pastoral and spiritual care.

Overall responsibility for safeguarding at parish level lies with the vicar, supported by the PSO.

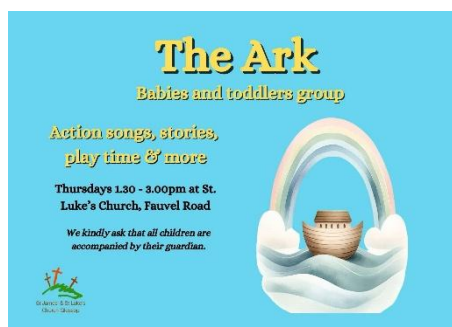
The PCC has adopted promoting a safer church as its own safeguarding policy, it was last reviewed in September 2024. The Parish Safeguarding Action Plan was reviewed in November 2024. The PSO reported to the PCC in January 2025.

Valuable administrative support has ensured that co-ordination of safeguarding training and DBS administration, both crucial aspects of safer recruitment, was shared out. Profoundly grateful thanks to both Sheila Humphrey and Heather Kindleysides for your hard work, support and commitment to this important work.

Thank you to our volunteers who have followed the safer recruitment guidance and accessed face to face or online training.

Latest versions of the Church of England’s Safeguarding documents can be found here:

www.churchofengland.org/safeguarding/safeguarding-e-manual



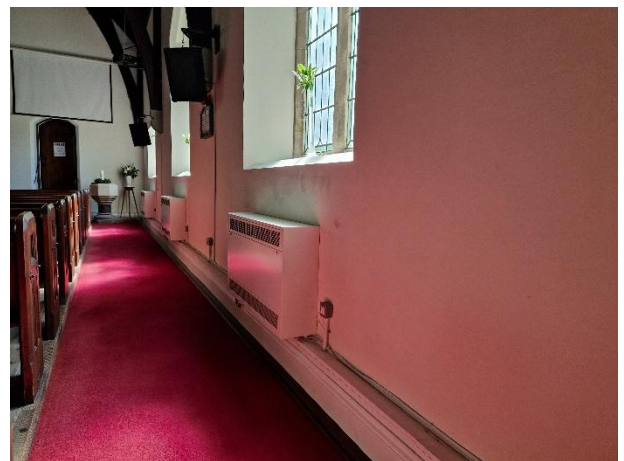
Fabric Report

Charlie Bishop

St Luke's

There was only one job of significance – and what a job! A new heating system was installed – project managed by Andy Hackett. Getting quotes was interesting – small companies were scared stiff by the scale, and large ones thought they were installing for the size of Derby Cathedral. However, we found a suitable one following a site visit to a church known to me in Warrington.

Andy Hackett and Richie Wellock did the mammoth task of boxing in all the pipework; and not only can we see the improvement, but our bodies can also feel it.



St James'

The entire wall to the right of the front door was in very poor condition, with water leaking onto the wall and floor of the stairs to the gallery. We all noticed the scaffolding and Steve Gill & Son did the repointing. They also undertook repairs to the bell tower roof inspection hatch, and to flashings and stonework to the southwest roof area. All we need now is a dry spell!!!

Sandy Booth, Jan Edkins and I cleaned, repainted and re-stained the woodwork, plaques and walls inside and outside the lychgate. Also, there was replastering and repainting undertaken inside the church entrance. These areas now look inviting and cared for.

Both Churches

September saw the 2025 Quinquennial reporting take place. If someone can secure funding of approx. £40,000 per church, I'll go through the recommendations with them.

Otherwise, in view of the remedial work which has taken place over the last 5 years, we'll concentrate on the smaller, manageable jobs – none of which are of immediate concern.

Deanery Synod

Canon Nikki Goodhew – Lay Chair

Area Dean – Rev'd Dr David Mundy (retired 31st July 2025),

Assistant Area Deans – Rev'd Mark Griffin; Rev'd Louise Petheram; Rev'd Fiona Kouble (from 28th May 2025)

House of Laity

Number of Representatives as per Diocesan Formula – 76

Number of elected Representatives – 45

House of Clergy

Number of clergy: 19

Synod 2nd April 2025

At our April meeting Nikki invited us to consider questions of pastoral care, including what is distinctive about Christian pastoral care, how it is organised in our parishes, and where the boundaries are between what we do as friends and what we do as church members. A lively discussion ensued! We also said goodbye to Rev'd Canon Tony Kaunhoven prior to his retirement, and David spoke warmly about the many ways that Tony had provided leadership and support to parishes, the Deanery and the Archdeaconry over many years.

Synod 2nd July 2025

For this Synod meeting we were joined by Mandy Cornwall, Headteacher of St Andrew's C of E Junior School in Hadfield, and Liz Seymour, Deputy Diocesan Director of Education. Mandy led our opening worship and then talked about the difference being a church school makes, and about the MACAWS project in St Andrew's School which supports pupil wellbeing and mental health. Liz asked us to think about our church's mission with schools, and how churches and schools can work together in partnership. Later in the meeting we agreed the Deanery accounts for 2024 and the budget for 2026. We also welcomed Fiona as an Assistant Area Dean, and although David was unable to be with us we thanked him for his contributions to the Deanery over many years and wished him well for his retirement, which Nikki conveyed to him after the meeting.

Synod 12th November 2025

We welcomed Alison Fletcher from Derbyshire Rural Chaplaincy to our November meeting to talk about the work of the chaplaincy, and some of the issues facing the agricultural sector in our diocese and how we can support it. We then split into small groups to discuss our parish's links with the farming community, and these discussions were then shared together. Mark also congratulated Nikki on her appointment as a lay canon of Derby Cathedral, and we heard a cautionary tale from one parish urging us to check our electrical systems are suitable before installing new appliances or heating systems!

At the end of 2025 we were still waiting for the appointment of a new Area Dean, and in February 2026 it was announced that Rev'd Fiona Kouble would be taking on this role. We look forward to welcoming Fiona as Area Dean at our next Deanery Synod meeting.

Missional Partnerships

Judith Woodward

Jesus asked his disciples to go into all the world with the Good News, we are not all called to go to new countries, but we can all move outwards in our prayers and financial giving.

As a parish we have four main Mission Partners: Tear Fund and Open Doors with global reach, Dave Maguire's mission is to Romania and lately Ukraine, and nearer to home is Embassy Village for the homeless in Manchester. Our aim is to have visiting speakers from each of these charities once a year.

The PCC is responsible for managing the giving from the parish tithe. In addition, there is a small team who gather prayer news and meet to pray three times a year for our mission partners. Everyone is welcome to join us in prayer then.

News and prayer notes are forwarded to Growth Group leaders after each prayer meeting, please ask them for copies. Also, the Mission Partners' display board in both churches is kept updated.

It is always encouraging to listen to speakers from our partner charities and praying together is a good way to maintain consistent prayer support. Our ambition is to inspire more involvement with local and world missions, to encourage the fellowship of agreement in prayer.

From Paul in Colossians 4, *"Continue steadfastly in prayer, being watchful in it with thanksgiving ...pray for us that God may open a door for the word, to declare the mystery of Christ, that I may make it clear."*

Eco Church

Chris Peters and Suzanne Gregory

The Eco Church programme supports churches in taking practical action to care for God's creation and the environment. Organised by A Rocha UK, the bronze, silver and gold award levels of Eco Church each cover five key areas of church life: Worship and teaching, Buildings and energy, Land and nature, Community and global engagement, and Lifestyle.

In 2025, we relaunched the Eco Church programme across our parish, beginning with a lively parish brainstorm meeting in February. Throughout the year, we have been blessed and encouraged by many people from both our congregations who have helped us in understanding what we are already doing as a parish that contributes towards the bronze award, and to plan and run new activities. The dedicated work by those who nurture and care for our church grounds and flower borders throughout the year, and building bug hotels in the church grounds, have helped us towards the 'Land and nature' category.

Many of the activities that count towards the Eco Church awards also provide us with opportunities for working within our local community, e.g. litter picking with The Bureau and Whitfield Womblers, organising the Easter Peg Hunt in Howard Park, providing refreshments for Whitfield community events, open-air services in Norfolk Square, making bug houses and planting seeds with 6.30 Kids, and work in our local primary schools.

We achieved the bronze award for both St Luke's and St James' churches in December 2025 and are now working towards the silver award.



Children, Youth and Families

Rebecca Wilson

Kingdom Kids runs alongside our normal Sunday services in both churches.

In St Luke's we have a small number of kids who come regularly. They are new this year which is exciting. We have a growing team which is allowing us to run sessions every week. We sometimes go into the back, read the Bible, make crafts and sing songs, other weeks we stay in church and provide packs that have a Bible story they can explore themselves and some little crafts they can do if they are more comfortable staying in the service.

In St James' we have a larger group of kids who come regularly, but you rarely get them all at the same time. We are struggling to get enough people on the team, and our current volunteers also do other jobs in church on a Sunday morning as well. Due to this we are only taking the kids out on the first and third Sundays in the month. On the second Sunday I am staying in church, in the kids corner at the back, and we are quietly doing some crafts and chatting about the theme of the service.



I want to say thank you to all the volunteers for the time and effort they put in, we couldn't run it without them. My hope for this year is that we can continue to grow the young people that come to St Luke's and we can grow the team for St James'.

Roots is our High School and older group.

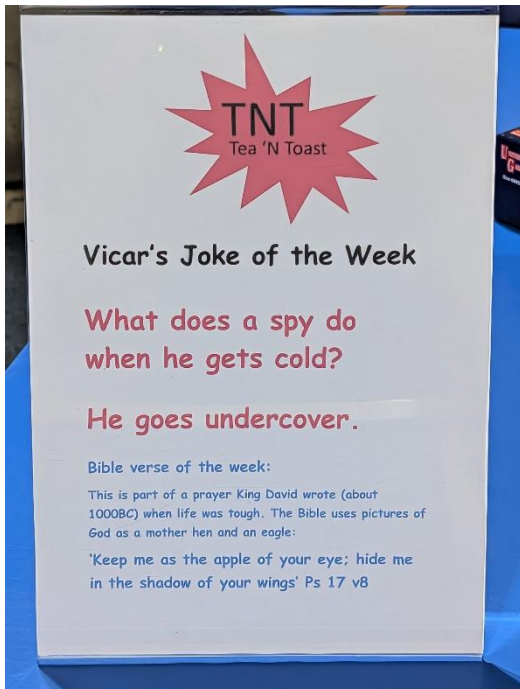
We meet on Sunday evenings from 5-6.30pm. The group is run by myself and Chris Neilson, with a team of volunteers who support us. We provide a space for the young people to come and feel safe, we play games with them, chat with them about their week and what is going on in their lives. We also have a dedicated space where we look at God. At the moment we are working through a book called "We are Satellites" which looks at different themes and how they are important in our lives, but also in our relationship with God. The big highlight from last year was going to Satellites in the summer. Satellites is a weeklong camp in Bath where the young people were able to join with hundreds of other teenagers their age. They had big group worship sessions, there were seminars, workshops and activities all afternoon. It was a fantastic experience. My hope for this year is that we can go back to Satellites, and that we can continue to see the young people grow in their relationship with God. A massive thank you to everyone on the team for all the time and effort you put in.

Outreach Activities

6.30 Kids is our Primary School aged group.

We meet on Thursday evenings from 6:30-7:45pm. The group is run by myself with a small team of volunteers. We create a space where we can introduce them to God, explore ideas and answer questions. We play games and do crafts and get to know the children that come along. Some positives from last year are that we have started to see them engage really positively in the “God spots” we do. We also ran a light party at Halloween which went really well and we got lots of positive comments from the parents as well. My hope for this year is that we can grow the team, so we can run more consistently and continue to see the children grow in their faith journey. I also hope that we can start to get the parents more involved as well. A huge thank you to everyone on the team for all the time and hard work you put in.

T’n’T (Tea and Toast) and Messy Church at Dinting



We also work with Dinting supporting them in their children's and youth ministry outreach.

We support them at TNT, the after school drop in on a Friday. We provide a safe space for teenagers to come get some toast and hot chocolate, play games, do crafts and chat with the volunteers. We get anywhere from 30-80 children each week, some stay for the whole time, some just pop in. It is run by a dedicated group of volunteers from Dinting, Whitfield and St John's. It has been really encouraging to see the young people grow up and some of them have started to come along to Roots as well.

We also support them with Messy Church which they run once a month. We have around 15 children plus their families come and we do activities for them on the theme for the month, then we have a Bible story and sing some songs before we have tea together. It is run mainly by volunteers from Dinting. The numbers fluctuate each month but it was really encouraging towards the end of the year we had 3 months where the numbers were really high.



The Ark

Debbie Seel

The aim is to introduce pre-school children and their families to Jesus.

The first meeting took place on 20/3/2025 and ran each Thursday until Christmas, ending with a crib service on 24/12/2025. The event is advertised by fliers, posters and Facebook.

The team is made up of the following roles: greeter at registration, connectors, prayers, servers, cleaners, organizers and valediction. The following themes have been engaged: Lost and found, God's love, The open gate, summer holiday crafts, Miracles of Jesus, Characters of the nativity during advent.

Activities and toys are arranged for the children to enjoy between 1:30-2:30pm. A craft activity in line with the story is available throughout. At circle time all in attendance gather in the chancel for a story, action songs and fun together. Everyone is then invited to have a snack in the backroom, which is nutritious and well received.

Throughout the year the numbers in attendance have varied greatly but have recently settled above 14 toddlers. It is often families that attend rather than individuals which is very encouraging and means we have more than 30 people in church.

After all the children and their carers have left we pray together and tidy away. Evidence of the children's activity is posted and arranged around church for the encouragement of the congregation. Resources are regularly cleaned and work is currently taking place to categorize and store them better.

The engagement at circle time is key to measuring our success in meeting the aim. It is important to get enough participants, but a much more significant matter is the presence of the Holy Spirit. There have been many occasions when the evidence has been clear that children are aware of His presence amongst us.

The aim for 2026 is to strengthen the team, grow in numbers and see converts.



Growth/House Groups

Martin Dowland

I prepare study notes based on the Sunday sermon series chosen by Chris, which Growth/House Group leaders have the option to use as a basis for their studies or choose other teaching materials as most appropriate for their groups. There are eight groups altogether, two of which meet in the Vineyard, five in private homes and one online either weekly or fortnightly, some during the day and others in the evening.

An example:

The Peveril Court group has continued to meet weekly at Pat and Laurie Gill's (and occasionally at Hilary Collard's) for most of the year, under the leadership of Laurie and myself. However, the Lord took dear Laurie to be with Him in glory early in the New Year 2026 soon after we had decided to meet fortnightly. The group carries on but in changed form to grow in grace and in the knowledge of God's word, missing Laurie enormously but very conscious of all he gave us over many years, with his clear example of Christian manhood and discipleship.

We are now almost entirely female and in the second half of life! If anyone would like to alter this by joining an otherwise wonderful group, you will be very welcome ... Have a word with me or any of the other members.

In Our Community

Coffee Pot at St Luke's - Cynthia Jones and Gill Booth

Looking at Coffee Pot Reports from 2008 onwards (earlier records also exist) some things have changed over the years, but hopefully not the warm welcome.

At first, we served cakes with coffee, now the merry band of volunteers exercise their gifts of hospitality in pairs, serving toast, crumpets or fruit loaf with coffee, tea (including specialty teas), hot chocolate or a cold drink, with some taking the opportunity to have their breakfast.

The cornerstone of Coffee Pot is not only the weekly gathering but a time and place where friends, and not yet friends, can come together to share fellowship, lift each other up spiritually, sharing and caring, but importantly, praying for others when the opportunity arises. Not only being a blessing to others but being blessed.



A small charge enables us to donate to many good causes. During 2025 we donated a total of £695 to Dave Maguire, Stephen Bell, Open Doors, Cystic Fibrosis, Tearfund, Christian Aid, Embassy and Christmas Gifts for children in Whitfield, and we continue to make regular contributions to The Ark.

We hope to serve our great coffee, tea and toast for many years to come.

Grace Kitchen – John and Ann Midwood

Grace Kitchen continues to provide a warm and safe place for local residents. On arrival warm drinks and biscuits are available.

A sandwich lunch with tea, coffee or a cold drink is provided free of charge, together with a bag of groceries donated by local supermarkets.

The Team Leader is Martin Galvin and the volunteers are, Judith Woodward, Sandie Mann, Mari Brown, David Leigh, Catherine Cowley, Liz Strek and ourselves.

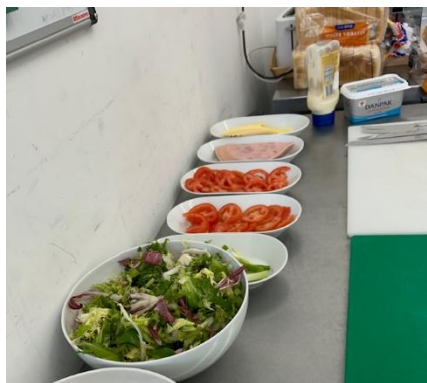
We are grateful to St James' School for their continued support and donations of food for the Harvest Festival. With thanks also to the congregations of St Luke's and St James' for their generous donations.

Our guests help with the setting up of the tables and chairs once the team has cleared away the food bags ready for collection.

We continue to support a vulnerable single mum by providing a bag of groceries and takeaway sandwiches, which are collected by a local carer.

We have several guests who drop in now and again and would encourage members of the local community, who are in need of support to come along to Grace Kitchen.

If you would like to join the volunteer team or know of anyone interested in getting into volunteering, please let any member of the team know.



Whitfield Community Café – Jo Galvin

Along with myself, the volunteers – John and Marilyn Butterworth, Stephen Brown, Judith Moore, Ruth Bennett, Julia Tinson and Bee Oliver – can sometimes struggle with the workload. Despite being elderly, they are truly amazing.

The aim of the Café is to provide a safe space for all people of all ages in the Glossop and surrounding areas where they can enjoy a free cuppa with cake, have a chat and a laugh.

Our aim is to gently present the gospel. We do this by running Easter and Christmas parties as well as offering a listening ear to anyone who is struggling with personal problems. We offer prayer where we feel it's appropriate.

Our service users are committed to the café both in their attendance and by their generous support, bringing cakes and every now and then a cash donation towards our events. The Vineyard provides an excellent space to run the café.

In April 2026, I will be stepping down as Team Leader. We are at present looking for my replacement. We are also looking for new volunteers.

Whitfield Parochial Church Council

Objectives, Governance and Structure

The primary object of Whitfield PCC is the promotion of the gospel of our Lord Jesus Christ according to the doctrines and practices of the Church of England, in co-operation with the Priest In Charge, Reverend Christopher Neilson, to promote in the parish the whole mission of the Church, pastoral, evangelistic, social and ecumenical.

Whitfield Parish has four buildings: the Churches of St James the Great, Hollincross Lane and St Luke, Fauvel Road; Church House, Fauvel Road and The Vineyard, 18-20 Charlestown Road.

Whitfield Parish is part of the Peak Deanery in the Diocese of Derby. The correspondence address is The Vineyard, 18-20 Charlestown Road, Glossop, Derbyshire, SK13 8JN.

The PCC is a body corporate (PCC Powers Measure 1956, and the Church Representation Rules 2025). The PCC is a Registered Charity, number 1134145.

The method of appointment of PCC members is set out in the Church Representation Rules. The Council comprises the Incumbent, the Churchwardens, those elected to the Deanery Synod, and other members who are elected at the Annual Parochial Church Meeting by those on the Electoral Roll. Members of the congregation are always encouraged to join the Electoral Roll, and to consider standing for election to the PCC.

The PCC appoints a sub-committee to advise on all matters of finance.

WHITFIELD CHURCH COUNCIL
FINANCIAL STATEMENTS
FOR THE YEAR ENDED 31 DECEMBER 2025

STATEMENT OF FINANCIAL ACTIVITIES
For the year ended 31 December 2025

	Note	Unrestricted Funds £	Designated Funds £	Restricted Funds £	Total 2025 £	Funds 2024 £
INCOME						
Voluntary Income	2a	121,836	-	500	122,336	116,553
Activities for generating funds	2b	7,721	1,100	11,391	20,212	14,754
Income from investments	2c	2,788	717	1,469	4,974	7,301
Church activities	2d	11,667	-	-	11,667	10,669
Total income		144,012	1,817	13,360	159,189	149,277
EXPENDITURE						
Church activities	3a	143,827	190	54,190	198,207	142,574
Raising funds	3b	1,470	-	1,419	2,889	9,573
Total expenditure		145,297	190	55,609	201,096	152,147
Net income/expenditure before Investment gains		(1,285)	1,627	(42,249)	(41,907)	(2,870)
Net gains on investments	4b	-	-	-	-	-
Net income (EXPENDITURE)		(1,285)	1,627	(42,249)	(41,907)	(2,870)
Transfer between funds		-	-	-	-	-
NET MOVEMENT IN FUNDS		(1,285)	1,627	(42,249)	(41,907)	(2,870)
Total funds brought forward	8b	79,573	16,683	206,925	303,181	306,051
Total carried forward		78,288	18,310	164,676	261,274	303,181

BALANCE SHEET

As at 31 December 2025

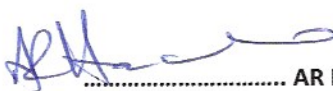
	Note	2025 £	2024 £
FIXED ASSETS			
Tangible fixed assets	4a	125,684	125,684
Investments	4b	-	-
		<u>125,684</u>	<u>125,684</u>
CURRENT ASSETS			
Debtors	5	5,821	6,722
Short term deposits	6a	113,950	147,479
Cash at bank and in hand	6b	16,089	23,416
		<u>135,860</u>	<u>177,617</u>
LIABILITIES			
Amounts falling due within one year	7	270	120
		<u>270</u>	<u>120</u>
NET CURRENT ASSETS		135,590	177,497
NET ASSETS		261,274	303,181
FUNDS			
Unrestricted	8b	78,288	79,573
Designated	8b	18,310	16,683
Restricted	8b	164,676	206,925
		<u>261,274</u>	<u>303,181</u>

The attached notes numbered 1 to 8 form part of these financial statements

Approved by the PCC on 16th March 2026 and signed on their behalf by



C Neilson PCC Chairperson



AR Hackett PCC Treasurer

NOTES TO THE FINANCIAL STATEMENTS

For the year ended 31 December 2025

1. ACCOUNTING POLICIES

The PCC is a public benefit entity within the meaning of FRS 102. The financial statements have been prepared under the Charities Act 2011 and in accordance with the Church Accounting Regulations 2006 governing the individual accounts of PCCs, and with the Regulations "true and fair view" provisions. They have also been prepared under FRS 102 (2016) as the applicable accounting standards and the 2016 version of Recommended Practice, Accounting and Reporting by Charities (SORP) (FRS102).

Assets**Consecrated and benefits property**

In so far as consecrated and benefice property of any kind is excluded from the statutory definition of "charity" by Section 10(2) (a) and (c) of the Charities Act 2011 such assets are not capitalised in the financial statements.

Moveable church furnishings and tangible fixed assets

Items costing in excess of £1,000 with a useful economic life in excess of a year are capitalised and depreciated over that useful economic life.

Depreciation is calculated to write off the capitalised cost of fixed assets, less their anticipated residual value over their estimated useful lives as follows:

Land and buildings	Nil
Fixtures, fittings and equipment	4 Years

Depreciation is not provided on land and buildings as the currently estimated value of the property is not less than the carrying value and the remaining useful life currently exceeds 50 years, so that any depreciation charges would be immaterial.

Investments

Investments are valued at market value at the year end.

Short term deposits

These are monies held on deposit with CCLA.

2. INCOME

	Unrestricted Funds £	Designated Funds £	Restricted Funds £	Total 2025 £	Funds 2024 £
2a. Voluntary income					
Planned giving	95,322	-	-	95,322	91,759
Tax recovered	22,030	-	-	22,030	21,022
Collections – open plate	4,484	-	-	4,484	2,272
Grants	-	-	500	500	1,500
Sundry donations and legacies	-	-	-	-	-
	121,836	-	500	122,336	116,553
2b. Activities for generating funds					
Donations for specific purposes (including tax)	-	1,100	5,960	7,060	1,602
Rent from Church House	7,721	-	5,431	13,152	13,152
	7,721	1,100	11,391	20,212	14,754
2c. Income from Investments					
Dividends on CCLA Investment Fund	-	-	-	-	-
Net gains on CCLA Investment Fund	-	-	-	-	-
Interest on CCLA Deposit Fund	2,788	717	1,469	4,974	7,301
	2,788	717	1,469	4,974	7,301
2d. Income from church activities					
Fees for weddings and funerals	3,066	-	-	3,066	1,672
Room hire and other activities	8,601	-	-	8,601	8,997
	11,667	-	-	11,667	10,669
Total income	144,012	1,817	13,360	159,189	149,277

NOTES TO THE FINANCIAL STATEMENTS
For the year ended 31 December 2025

3. EXPENDITURE

	Unrestricted Funds £	Designated Funds £	Restricted Funds £	Total 2025 £	Total 2024 £
3a. Church activities					
Missionary and charitable giving:					
Church overseas	3,051	-	-	3,051	3,004
Relief and development agencies	3,968	-	-	3,968	4,284
Personal missionaries	-	-	-	-	-
Home missions and other church societies	3,776	-	-	3,776	4,090
Secular	817	-	-	817	612
	<u>11,612</u>	<u>-</u>	<u>-</u>	<u>11,612</u>	<u>11,990</u>
Diocesan parish share	45,000	-	-	45,000	40,000
Clergy and staffing costs	23,257	-	-	23,257	24,894
Church running and maintenance	49,152	190	39,503	88,845	48,869
Upkeep of churchyard	-	-	-	-	-
Depreciation of equipment	-	-	-	-	-
Ministry costs	11,320	-	14,687	26,007	12,576
Training and conferences	164	-	-	164	112
Publicity costs	-	-	-	-	195
Office expenses and other costs	3,322	-	-	3,322	3,938
	<u>143,827</u>	<u>190</u>	<u>54,190</u>	<u>198,207</u>	<u>142,574</u>
3b. Raising funds					
Church House maintenance and other costs	1,470	-	1,419	2,889	9,573
	<u>145,297</u>	<u>190</u>	<u>55,609</u>	<u>201,096</u>	<u>152,147</u>
Total resources expended					

3c. Analysis of expenditure

	2025 £	2024 £
The following amounts were included in expenditure:		
Independent examiner's fees	120	120
Wages and salaries (including pension contributions)	21,724	23,610

4. FIXED ASSETS

	Church House £	Church Equipment £	Total £
4a. Tangible fixed assets			
Cost			
At 1 January 2025	125,684	19,856	145,540
Additions	-	-	-
Disposals	-	-	-
At 31 December 2025	<u>125,684</u>	<u>19,856</u>	<u>145,540</u>
Depreciation			
At 1 January 2025	-	19,856	19,856
Charge for the year	-	-	-
Eliminated on disposals	-	-	-
At 31 December 2025	<u>-</u>	<u>19,856</u>	<u>19,856</u>
Net book value			
At 1 January 2025	125,684	-	125,684
At 31 December 2025	<u>125,684</u>	<u>-</u>	<u>125,684</u>

Church House is stated at cost and has not been revalued. The freehold title of the property is held by an independent trust and the PCC has no power of sale. The costs arising on the property are met out of the rental income received and 4/7ths of any net income arising is wholly for the benefit of the PCC. The remaining 3/7ths is held in trust to be used for the benefit of St Luke's Church.

NOTES TO THE FINANCIAL STATEMENTS

For the year ended 31 December 2025

4b. Investments

	2025	2024
	£	£
Market value at 1 January 2025	-	-
Re-invested dividends	-	-
Unrealised net gains/losses on investment	-	-
Expenditure in the year	-	-
Market value at 31 December 2025	-	-

5. DEBTORS

	2025	2024
	£	£
Income tax recoverable	5,821	6,604
Amounts owed by third parties	-	118
	5,821	6,722

6. SHORT TERM DEPOSITS, BANK AND CASH BALANCES

	2025	2024
	2025	2024
	£	£
Short term deposits	113,950	147,479
Cash at bank and in hand	16,089	23,416
	130,039	170,895

6a. Short term deposits comprise:

	2025	2024
	£	£
CCLA deposits	113,950	147,479

6b. Cash at bank and in hand comprises:

	2025	2024
	£	£
Bank current accounts		
National Westminster Bank PLC	13,326	19,544
Barclays Bank PLC	2,763	3,872
	16,089	23,416
Petty cash	-	-
	16,089	23,416

7. LIABILITIES

	2025	2024
	£	£
Amounts falling due within one year:		
Funds held on behalf of third parties	150	-
Accrued expenses	120	120
	270	120

8. FUNDS

	Unrestricted Funds	Designated Funds	Restricted Funds	Total 2025	Funds 2024
	£	£	£	£	£
8a. Summary of assets by fund					
Fixed assets	-	-	125,684	125,684	125,684
Investments	-	-	-	-	-
Current assets	78,558	18,310	38,992	135,860	177,617
Current liabilities	(270)	-	-	(270)	(120)
	78,288	18,310	164,676	261,274	303,181

NOTES TO THE FINANCIAL STATEMENTS

For the year ended 31 December 2025

8. FUNDS (continued)

8.b Summary of fund movements

	1 January 2025	Income	Expenditure	Net gains on investments	Transfer between Funds	31 December 2025
Unrestricted funds						
Parish general funds	79,573	144,012	(145,297)	-	-	78,288
Designated funds						
For the Benefit of St Luke's Church	16,683	1,817	(190)	-	-	18,310
Restricted funds						
Church House fund	125,684	-	-	-	-	125,684
For the Benefit of St Luke's Church	39,267	236	(39,503)	-	-	-
Church House Maintenance fund	1,989	86	-	-	-	2,075
Church House Trustees Account	31,948	6,577	(1,419)	-	-	37,106
Whitfield Cafe Grant fund	21	-	-	-	-	21
Grace Kitchen fund	3,139	621	(1,049)	-	-	2,711
Senior's fund	508	-	(212)	-	-	296
St Luke's Donations Over 3 years	4,200	-	(4,200)	-	-	-
Growing Faith Fund	-	700	(4,141)	-	-	(3,441)
Hospitality Fund	107	-	-	-	-	107
St James' Chimes/Bell Fund	62	50	-	-	-	112
Warm Buildings Fund	-	-	-	-	-	-
Third Party Charity Appeals	-	5,090	(5,085)	-	-	5
	206,925	13,360	(55,609)	-	-	164,676
Total movements	303,181	159,189	(201,096)	-	-	261,274

Unrestricted funds are available for spending on the general purposes of the PCC. We aim to carry at least 3 months of expenditure in unrestricted reserves as recommended by the Charity Commission.

Designated funds are funds that have been set aside out of general unrestricted funds by the PCC for particular purposes and can be undesignated or re-designated. Together with unrestricted funds, these form part of free reserves.

Restricted funds can be used in furtherance of the objectives of the PCC but can only be used for specific purposes set by either the PCC itself or external donors. As such they do not form part of free reserves.

Church House is held by an independent trust and the PCC has no power of sale. The costs arising on the property are met out of the rental income received and 4/7ths of any net income arising is wholly for the benefit of the PCC. The remaining 3/7ths is held in the Church House Trustees Account as a restricted fund. The Trustees of Church House decide how these monies are used, but they must be used for the benefit of St Luke's Church.

INDEPENDENT EXAMINERS REPORT TO THE MEMBERS OF WHITFIELD PAROCHIAL CHURCH COUNCIL

I report on the accounts for the year ended 31 December 2025 which are set out on the previous five pages.

Respective responsibilities of the members of the PCC and examiner

Members of the PCC are charity trustees for the parish and are responsible for maintaining proper accounting records and for the preparation of accounts. The members of the PCC consider that an audit is not required this year under section 144(2) of the Charities Act 2011 (the 2011 Act) and that an independent examination is needed.

It is my responsibility to:

Examine the accounts under section 145 of 2011 Act.

Follow the procedures laid down in the general Directions given by the Charity Commission under section 145(5)(b) of the 2011 Act, and

State whether particular matters come to my attention.

Basis of Independent Examiners statement

My examination was carried out in accordance with the general directions given by the Charity Commission. An examination includes a review of the accounting records kept by PCC and a comparison of the accounts presented with those records. It also includes consideration of any unusual items or disclosures in the accounts and seeking explanations from the members of the PCC concerning any such matters. The procedures undertaken do not provide all the evidence that would be required in an audit and consequently no opinion is given as to whether the accounts present a true and fair view' and the report is limited to those matters set out in the next statement.

Independent Examiners statement

In connection with my examination, no matter has come to my attention:

- 1) Which gives me reasonable cause to believe that in any material respect the requirements:

to keep accounting records in accordance with section 130 of the 2011 Act and

to prepare accounts which accord with the accounting records and comply with the accounting requirements of the 2011 Act

have not been or
- 2) to which, in my opinion, attention should be drawn in order to enable a proper understanding of the accounts to be reached.

A. P. Brooks F.C.C.A.

Adrian P Brooks FCCA

Scott Roberts Taylor & Co
Accountants & Registered Auditors
5/7 Corporation Street
Hyde
Cheshire
SK14 1AG

for Scott, Roberts, Taylor & Co

24 March 2026