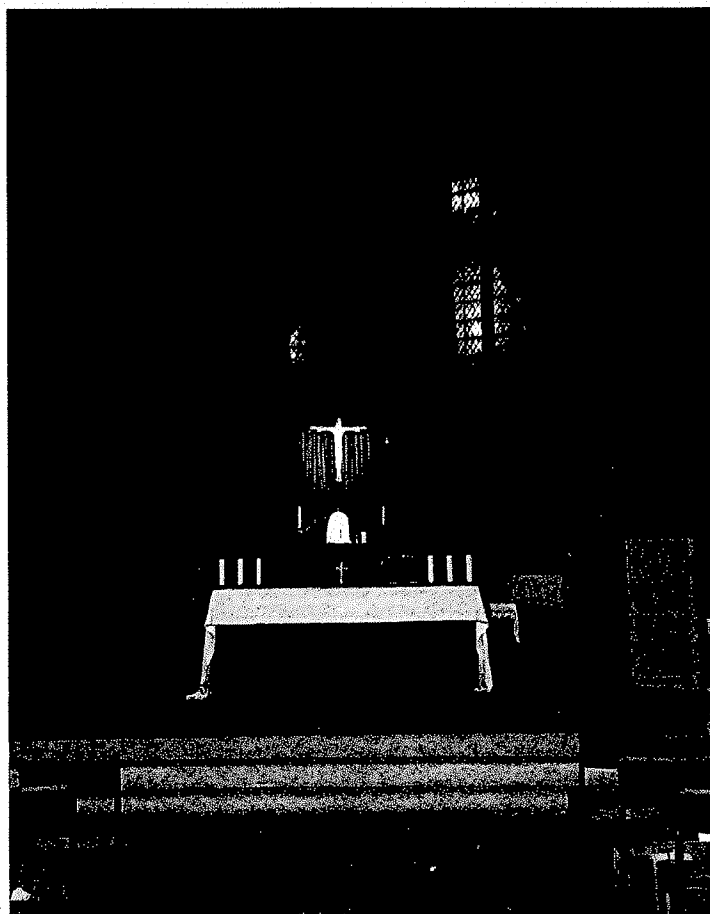


# **PAROCHIAL CHURCH COUNCIL** **ANNUAL REPORT FOR 2023**

AND INDEPENDENTLY EXAMINED FINANCIAL STATEMENTS  
**FOR THE YEAR ENDED 31 DECEMBER 2023**

*approved by the Parochial Church Council in April 2024*



THE PAROCHIAL CHURCH COUNCIL OF THE ECCLESIASTICAL PARISH OF  
**ST MARY THE VIRGIN SWANLEY**

REGISTERED CHARITY NO. 1122020

# ST MARY THE VIRGIN SWANLEY

ANNUAL REPORT & ACCOUNTS FOR THE YEAR ENDED 31 DECEMBER 2023

## **A Brief Note**

The most important figures are:

our ordinary income: **£55,008**

and our ordinary expenditure: **£50,254**

On the face of it, we have more coming in than going out so surely that's a good thing?

We have paid less than £3,000 to the Diocese of Rochester towards the cost of our parish priest. Thanks be to God, the diocese pays the stipend for the priests whether or not parishes have paid their share. The diocese must bear the full cost of the stipend for the priest, plus pension contributions, national insurance contributions, training, supervision, maintaining the vicarage and supporting the ministry. All this takes the stipend of around £30,000 up to more than £60,000 as the cost of having a vicar in post.

And we paid less than £3,000.

We owe the diocese of Rochester huge thanks for supporting us as we recover from Covid. Their patience cannot be limitless, however! We must pay our way and these accounts must be read with the knowledge that we are not doing that at present.

Fr Dane Batley-Gladden  
Vicar

## **CONTENTS**

<b>ITEM .....</b>	<b>PAGE</b>
Minister & Officers, registered address & professional advisers .....	4
Report of the Minister and Officers.....	5 to 9
Independent Examiners Report to Minister and Officers .....	10
Statement of Financial Activities (income and expenditure) .....	11
Statement of Assets and Liabilities .....	12
Notes to the accounts.....	13 to 19

THE PAROCHIAL CHURCH COUNCIL OF THE ECCLESIASTICAL PARISH OF  
**ST MARY THE VIRGIN SWANLEY**  
ANNUAL REPORT & ACCOUNTS FOR THE YEAR ENDED 31 DECEMBER 2023

**MINISTER AND OFFICERS**

**Ex-officio PCC Members & Trustees**

**Vicar & PCC Chairman**

The Reverend Dane Batley-Gladden

**Churchwardens**

Christine Parkes

Kevin Merrick (*also PCC Vice Chair*)

**Deanery Synod Representatives**

Paula Davies

*Vacancy*

**Elected PCC Members & Trustees**

Holly Attwood (*Honorary Secretary*)

Sandra Merrick (*Honorary Treasurer*)

Ruth Cove

Larree Lloyd

Toni Roast

Janet Kitchener

**REGISTERED ADDRESS**

St Mary's Church, London Road, Swanley, BR8 7AQ.

**ACCOUNTANTS**

**SARGEANT PARTNERSHIP LLP**

Chartered Accountants

5 White Oak Square, London Road, Swanley, BR8 7AG.

**BANKERS**

**BARCLAYS BANK PLC**

24 Lowfield Street, Dartford, DA1 1HD.

# **ANNUAL REPORT OF THE MINISTER AND OFFICERS**

The Parochial Church Council of St Mary the Virgin, Swanley ('the PCC' or 'the Council') present their annual report and financial statements for the year ended 31<sup>st</sup> December 2023.

## **Basis of Preparation of Accounts**

The PCC is a public benefit entity within the meaning of FRS 102. The financial statements have been prepared under the Charities Act 2011 and in accordance with the Church Accounting Regulations 2006 governing the individual accounts of PCCs, and with the Regulations' 'true and fair view' provisions, together with FRS 102 (2016) as the applicable accounting standards and the 2016 version of the Statement of Recommended Practice, Accounting and Reporting by Charities (SORP (FRS 102)).

## **Objectives and activities for the purpose of public benefit**

The PCC has the responsibility of co-operating with the vicar, the Reverend Dane Batley-Gladden, in promoting in the ecclesiastical parish, the whole mission of the Church, pastoral, evangelistic, social and ecumenical. The PCC is also specifically responsible for the maintenance of the church of St Mary the Virgin, Swanley. The PCC is committed to enabling as many people as possible to worship at our church and to become part of our parish community at St Mary's. The PCC intends that our worship puts faith into practice through sacrament, scripture, prayer and music.

When planning our activities we have considered the Charity Commission's guidance on public benefit and, in particular, the supplementary guidance on charities for the advancement of religion. In particular, we try to enable everyone to live out their faith as part of our parish community through:

Worship and prayer - learning about the gospel; and developing knowledge and trust in Jesus Christ as Saviour, master and friend.

Provision of pastoral care for people living in the parish - especially building on the opportunities given by our churchyard which is used by many people in the parish and available to everyone in the parish for burials and interment of ashes.

Missionary, evangelism and outreach – using our superb location and facilities to proclaim a welcoming community of faith ready to support people in many different ways.

As part of our general public benefit, we provide a place and space for spiritual refreshment and nourishment of the soul: regardless of denomination or even faith, the opportunity for reflection is a basic human characteristic and St Mary's is proud to be of service to all in this way.

To facilitate our work, it is important that we maintain the fabric of St Mary's Church and of the Hall and Churchyard and raising money to enable this to be done efficiently and effectively is vital.

## **Achievements and performance**

### **Worship and prayer**

The central act of worship each week is our 10am Sunday Mass when with Sacrament, Scripture, song, prayer and uplifted hearts we commit ourselves afresh to the service of God, the love of Him and of His people and, indeed, the Father's whole creation. We also have an evening service at 5pm which is either Evening Prayer from the Book of Common Prayer, Vespers or the Rosary, these are smaller, quieter and more reflective services often much valued by those attending because of these very characteristics.

THE PAROCHIAL CHURCH COUNCIL OF THE ECCLESIASTICAL PARISH OF  
**ST MARY THE VIRGIN SWANLEY**  
ANNUAL REPORT & ACCOUNTS FOR THE YEAR ENDED 31 DECEMBER 2023

We celebrate a said Mass every weekday (except Monday, the Vicar's day off) and we have a range of Communicants, a majority of whom are not with us for the Sunday services. There is a weekly Mass at St Mary's Church of England Primary School, Baptisms are celebrated regularly in church as are funerals, marriages and many other acts of worship.

None of this would be possible without an immense effort on the part of so many to maintain the building and grounds and support the Vicar in his ministry. On a personal note, I should like to pay special tribute to our Churchwardens, Christine Parkes and Kevin Merrick. They have served for many years and their commitment to God, to the people of Swanley and the ministry of the Church has been wonderful to see. I owe them both a great deal and should like to pay them special thanks. Most of what we all do is unseen but they both work hard in ways which simply cannot be fully appreciated by most who experience our parish's ministry.

As at our annual meeting in 2023 there were 74 parishioners (73 in 2022) on the Church Electoral Roll. The average weekly attendance, counted during October, was 35 (37 in 2022), but major festivals continue to attract many who not part of our regular worshipping community.

The numbers attending Mass continue to fluctuate, in a way which they did not before Covid. We have seen a large number of people come through our doors who are frightened. For many years, we in the West have lived a relatively quiet and stable life. The combination of Covid, the cost of living and energy crisis, the illegal and unwarranted invasion of Ukraine by Russia and the awful events in the Israel/Hamas dispute in Gaza have created a sense of worry and instability in many people. We have ministered to a large number of people who are fearful and who easily become angry. This creates real challenges as the amount of time needed to be alongside people, to pray with them and to build up their internal sense of the God who loves them and cares for them is provided by a very small group within the parish. It is a magnificent achievement that the parish supports as many people as we do, with such love and such care.

#### **The Richborough Family, the Diocese of Rochester and Dartford Deanery**

Our Bishop, the Right Reverend Norman Banks, the Bishop of Richborough, announced in 2023 that he would retire at Easter 2024. We shall miss him hugely and we are grateful for his kindness and his wisdom. We are fortunate that in our Archdeacon, Andy Wooding Jones, and our Area Dean, the Reverend Richard Mortimer, we are given loving support and a great deal of encouragement. Our diocesan bishop, Jonathan Bishop of Rochester, and our suffragan, Simon Bishop of Tonbridge, are also exceptionally caring and supportive for which we are very grateful. There is a whole team at the Diocesan Office who are available to us and helpful when we call upon them.

#### **The Church Building**

During the year we replaced the roof above the sacristy and worked on a range of downpipes and gullies to try and stem difficulties with the ingress of water. We redecorated the hall, replaced its ordinary and emergency lighting and refreshed the narthex area. This work will continue in 2024 so that we can reopen our hall. The costs incurred were substantial but some of the paintwork in the hall had not been re-done since it was built in 1976.

#### **Volunteers**

There is a committed core of volunteers at St Mary's, without which it would be impossible for us to function. The Council would like to extend their thanks and appreciation for the hard work and commitment without which our ministry and mission could not be sustained.

#### **Fundraising**

We were pleased to have summer and Christmas coffee mornings, accompanied by a Grand Draw. In addition we restored a pattern of Sunday Parish Lunches which are much appreciated.

## **The Hall**

As referred to under The Church Building, this year was very much one of identifying and commissioning restoration work on the hall. We had hoped to reopen quite quickly but as we looked at the condition of the hall it became clear that more work was required than originally thought. We are working hard to open fully in 2024.

## **The Churchyard**

By Council resolution, the churchyard was closed to new burials at the end of 2021 due to lack of space although this does not affect reservations and existing grave spaces. This has led to a substantial reduction in the number of funerals undertaken by the parish since then. The Council appointed a new grounds maintenance contractor for the churchyard who has so far proved excellent.

## **Pastoral care & Safeguarding**

The safeguarding of children and vulnerable adults is at the core of what it is to be a faithful Christian. The Church of England provides comprehensive training opportunities and the Council has given this a clear ongoing priority. Members of the Council as well as members of the wider congregation were given the opportunity to take the church's training programmes and the take-up of this continues to be encouraging. The Council understands only too well that the Church in its widest sense is rightly held to higher standards than the rest of secular society and has sometimes failed to live up to the wholly reasonable expectations of victims and our wider society. The Council understands that we must play our part in restoring trust in the Church.

Pastoral care is exercised in a number of ways and the care which members of the family of faith here in Swanley have for each other is encouraging. This care extends well beyond the worshipping community and the Council pays tribute to all who are engaged in it.

## **Mission, evangelism and outreach**

The Council has continued to provide printed and online materials to provide information and encouragement to those who are exploring faith, as well those seeking to deepen an existing relationship with God.

Our website has continued to evolve and provides a huge range of explanatory material about the worship which will be encountered here. Our weekly Mass Books and monthly Newsletter also explain the Mass in detail and extend knowledge through articles and pointers to where additional information can be found.

Bringing new people into a relationship with Christ can only be done by the parish. It cannot be led by the centre, nor can any central structure do anything else except support the work done 'on the ground' in parishes. The centralising nature of much bureaucracy nationally continues to hamper mission rather than enable it so we are very pleased that the Diocese of Rochester has committed itself to a growth agenda which depends upon parish effort. St Mary's was delighted to host a meeting with our Archdeacon wholly focussed on mission. He gave encouragement, support and suggested ideas all of which have proved useful for discussion and action.

The Vicar has continued to serve as Mayor's Chaplain and provided prayers for Swanley Town Council meetings whilst the church has continued to host Remembrance Sunday, a Civic Carol Service and other services throughout the year. The Vicar is also Chaplain and Honorary President for the local Royal British Legion and is going through the processes to become Chaplain to the Chislehurst and Sidcup Sea Cadet Corps. All of these roles raise the visibility of faith and give the opportunity to explore and sustain a pathway to faith for many who are uncommitted. The Council looks forward to working with these and other organizations over the coming year.



THE PAROCHIAL CHURCH COUNCIL OF THE ECCLESIASTICAL PARISH OF  
**ST MARY THE VIRGIN SWANLEY**  
ANNUAL REPORT & ACCOUNTS FOR THE YEAR ENDED 31 DECEMBER 2023

### **Ecumenical relationships**

St Mary's continues to delight in the relationships with other churches and faiths in Swanley and beyond. Working together with our Roman Catholic colleagues for the celebration of the Stations of the Cross has been one very fruitful and enjoyable example of ways in which we can build up each other and rejoice in our common witness to Jesus Christ.

### **Financial review**

After the decision to dispose of the former Curate's House on Pinks Hill in 2022, this was completed towards the end of 2023. The net profit on disposal has been included as an exceptional item in the accounts. The Council intends to use the majority of this money to add to the Melba Williams bequest so that we can add disabled toilet facilities. However, £10,000 will be retained for the provision of any future curate's accommodation and the Council will resurface the car park with the remainder.

The total ordinary income for the year was £55,008 (2022: 79,955) and expenditure was £50,254 (2022: £75,845). The reason for the reduction in income was that the NHS ceased to use the church hall as a vaccine centre at the end of December 2022. Planned congregational giving fell slightly but the increase in collections at occasional offices more than offset this reduction.

We remain grateful for the support of many faithful members of our congregation. We were very pleased to be notified in late 2023 that we had been allocated a free contactless giving machine by the diocese, using funds granted by the central Church of England and reliant upon central accounts funded by the National Giving Team. The machine will be introduced during the second quarter of 2024. The diocesan and national teams will support us in its introduction and monitor its usage so that its effectiveness can be measured. This is a good use of central resources and effort and we are very pleased to have been selected to take part in this initiative. The Council believes that this will drive an increase in giving at occasional offices and at services provided for our wider community.

By far the largest single item of expenditure is energy: the church is high-ceilinged and large. Increases in the cost of heating and lighting have affected us hugely. All costs have risen, however, out of proportion to what our congregation can afford by way of giving. We have spent much less in absolute terms on energy in 2023 because we have not had to heat the building in the way we did when we were hosting the vaccine centre but it is still a very large part of our overall spend.

As a Charity, the members of the PCC are trustees and their responsibilities include the preparation of financial statements for each financial year, which give a true and fair view of the charity's financial activities during the year and of its financial position at the end of the year.

In preparing financial statements giving a true and fair view, the trustees follow best practice and:

- a) select suitable accounting policies and apply them consistently;
- b) make judgements and estimates that are reasonable and prudent;
- c) state whether applicable accounting standards and statements of recommended practice have been followed, subject to any departures disclosed and explained in the financial statements;
- d) prepare the financial statements on a going concern basis unless it is inappropriate to presume that the charity will continue in operation;
- e) To make such accounts available to the public on request.

The trustees are responsible for keeping accounting records for six years which disclose with reasonable accuracy the financial position of the charity and which enable them to ascertain the financial position of the charity and ensure that the financial statements comply with applicable law and regulations. They are also responsible for safeguarding the assets of the charity and hence for taking reasonable steps for the prevention and detection of fraud and other irregularities.

### **Reserves policy**

The Council believes it should have around three months' worth of basic running expenses in reserve which in 2023 equated to approximately £4,200. This was comfortably exceeded by the amount remaining in the current account or as cash in hand at the year end and not allocated to debtors.

### **Structure, governance and management**

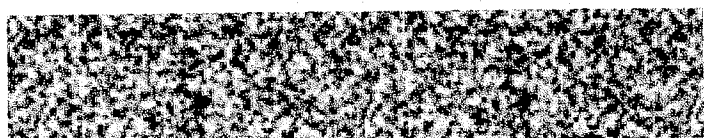
The Parochial Church Council is a corporate body established by the Church of England. The PCC operates under the Parochial Church Council Powers Measure. The PCC is a Registered Charity.

The method of appointment of PCC members is set out in the Church Representation Rules. At St Mary's the membership of the PCC consists of the incumbent (our vicar), churchwardens, and members elected by those members of the congregation who are on the electoral roll of the church along with members of relevant synods who join the PCC ex officio. All those who are members of the congregation are encouraged to register on the Electoral Roll and stand for election to the PCC. PCC members are responsible for making decisions on all matters of general concern and importance to the parish including deciding PCC expenditure priorities. The PCC meets four times a year with a full agenda, and there is an additional meeting to approve accounts in advance of the APCM. Given its wide responsibilities the PCC works through individuals, groups and, where appropriate, committees to focus on a particular aspect of the church's mission and activities.

### **Administrative information**

St Mary's Church is situated in London Road, Swanley. It is part of the Diocese of Rochester within the Church of England and it has passed resolutions with regard to the ministry of Bishops and Priests. As a result it is under the episcopal care of the Bishop of Richborough, the Right Reverend Norman Banks until his retirement at Easter 2024. Until a successor is appointed, the parish will come under the episcopal jurisdiction of the Right Reverend Jonathan Baker, the Bishop of Fulham.

The correspondence address is St Mary's Vicarage, London Road, Swanley, BR8 7AQ. Registered charity number 1133939.



**Fr Dane Batley-Gladden, Vicar**

**4<sup>th</sup> April 2024**

**INDEPENDENT EXAMINER'S REPORT**  
**TO THE MINISTER AND OFFICERS OF ST MARY THE VIRGIN, SWANLEY**

I report on the accounts of the PCC for the year ended 31<sup>st</sup> December 2023, which are set out on pages 11 and 12 and their accompanying notes on pages 13 to 19.

**RESPECTIVE RESPONSIBILITIES OF TRUSTEES AND EXAMINER**

As trustees of the charity, the members of the PCC are responsible for the preparation of the accounts. The charity's trustees consider that an audit is not required for this year under Section 144(2) of the Charities Act 2011 (the 2011 Act) and that an independent examination is needed.

It is my responsibility to;  
examine the accounts under the Regulations and Section 145 of the 2011 Act;  
to follow the procedures laid down in the General Directions given by the Charities Commission under Section 145(5)(b) of the 2011 Act and;  
to state whether particular matters have come to my attention.

**BASIS OF INDEPENDENT EXAMINER'S REPORT**

My examination was carried out in accordance with the General Directions given by the Charity Commission. An examination includes a review of the accounting records kept by the charity, and a comparison of the financial statements presented with those records. It also includes consideration of any unusual items or disclosures in the accounts, and the seeking of explanations from the management committee concerning any such matters. The procedures undertaken do not provide all the evidence that would be required in an audit, and consequently no opinion is given as to whether the accounts present a 'true and fair view' and the report is limited to those matters set out in the statement below.

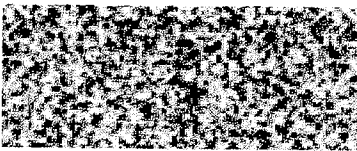
**INDEPENDENT EXAMINER'S STATEMENT**

In connection with my examination, no matter has come to my attention

- 1 which gives me reasonable cause to believe that in any material respect, the requirements
- (a) to keep accounting records in accordance with Section 130 of the 2011 Act;
  - and
  - (b) to prepare accounts which accord with the accounting records and to comply with the accounting requirements of the 2011 Act

have not been met;

- or
- 2 to which, in my opinion, attention should have been drawn in order to enable a proper understanding of the accounts to be reached.



Joanne Brown

For and on behalf of  
SARGEANT PARTNERSHIP LLP  
Chartered Accountants  
5 White Oak Square, London Road  
Swanley, BR8 7AG

4<sup>th</sup> April 2024

## **STATEMENT OF FINANCIAL ACTIVITIES**

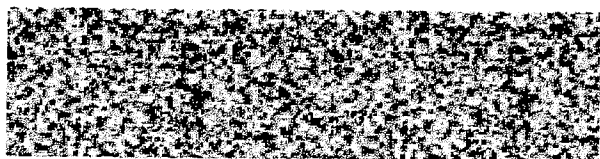
	Notes	Unrestricted Funds £	Restricted Funds £	Total 2023 £	Total 2022 £
<b>INCOME</b>					
Voluntary Resources	2(a)	16,996	18,952	<b>35,948</b>	18,310
Activities for Generating Funds	2(b)	5,229	-	<b>5,229</b>	41,918
Income from Investments	2(c)	-	2,241	<b>2,241</b>	879
Church Activities	2(d)	11,590	-	<b>11,590</b>	11,995
Other Income Resources	2(e)	-	-	-	1,751
Pilgrimages	2(f)	-	-	-	5,102
<b>TOTAL INCOME</b>		<b>33,815</b>	<b>21,193</b>	<b>55,008</b>	<b>79,955</b>
<b>EXPENDITURE</b>					
Church Activities	3(a)	42,340	2,754	<b>45,094</b>	67,065
Cost of generating voluntary income	3(b)	51	-	<b>51</b>	49
Fund-raising costs	3(c)	3,026	-	<b>3,026</b>	1,803
Church management and admin	3(d)	2,083	-	<b>2,083</b>	1,850
Pilgrimages	3(e)	-	-	-	5,078
<b>TOTAL EXPENDITURE</b>		<b>47,500</b>	<b>2,754</b>	<b>50,254</b>	<b>75,845</b>
Profit/(loss) on disposal of fixed assets		70,073	-	<b>70,073</b>	
<b>NET MOVEMENT IN FUNDS</b>		<b>56,388</b>	<b>18,439</b>	<b>74,827</b>	<b>4,110</b>
Balance B/fwd 1 January		80,188	64,199	<b>144,387</b>	140,277
Balance C/fwd 31 December		<b>136,576</b>	<b>82,638</b>	<b>219,214</b>	<b>144,387</b>

THE PAROCHIAL CHURCH COUNCIL OF THE ECCLESIASTICAL PARISH OF  
**ST MARY THE VIRGIN SWANLEY**  
 ANNUAL REPORT & ACCOUNTS FOR THE YEAR ENDED 31 DECEMBER 2023

## **STATEMENT OF ASSETS AND LIABILITIES**

	Notes	2023 £	£	2022 £	£
<b>Fixed Assets</b>					
Tangible	5	-	-	-	59,510
<b>Current Assets</b>					
Stock		13		13	
Debtors	6	1,827		1,813	
Short Term Deposits		6,299		4,184	
Deposits in Diocesan Funds		68,436		66,311	
Current Account and Cash in hand		143,942		25,958	
		<u>220,517</u>		<u>98,279</u>	
<b>Liabilities</b>					
Creditors – amounts falling due in one year	7	1,303		13,402	
<b>Net Current Assets</b>		<b>219,214</b>		<b>84,877</b>	
<b>TOTAL NET ASSETS</b>			<b>219,214</b>		<b>144,387</b>
<b>PARISH FUNDS</b>					
Unrestricted		136,576		80,188	
Restricted	8	82,638		64,199	
<b>TOTAL FUNDS</b>	9		<b>219,214</b>		<b>144,387</b>

Approved by the PCC on 21<sup>st</sup> February 2024 and signed on its behalf:



**The Rev'd Dane Batley-Gladden**  
Chairman



**Sandra Merrick**  
Honorary Treasurer

*The notes on pages 13-19 form part of these accounts*

## **NOTES TO THE FINANCIAL STATEMENTS**

### **1a Accounting policies**

#### **Basis of preparation and assessment of going concern**

The PCC is a public benefit entity within the meaning of FRS 102. The financial statements have been prepared under the Charities Act 2011 and in accordance with the Church Accounting Regulations 2006 governing the individual accounts of PCCs, and with the Regulations' 'true and fair view' provisions, together with FRS 102 (2016) as the applicable accounting standards and the 2016 version of the Statement of Recommended Practice, Accounting and Reporting by Charities (SORP (FRS 102)).

The accounts have been prepared under the historical cost convention with items recognised at cost or transaction value unless otherwise stated in the relevant notes to these accounts.

### **1b Funds**

Endowment funds are capital, given in such a form that only the interest may be spent whilst the original gift remains intact. The interest may be used either as restricted or unrestricted funds depending on the purpose for which the endowment was established.

St Mary's has no endowment funds and therefore there is no column shown for them in these accounts.

Restricted funds represent:

- a) income from trusts or endowment which may be expended only on those restricted objects provided in the terms of the trust or bequest,  
and
- b) donations or grants received from a specific object or invited by the PCC for a specific object. The funds may only be expended on the specific object for which they were given, any balance remaining unspent at the end of the year must be carried forward as a balance on that fund. The PCC does not usually invest separately for each fund.

Interest on Restricted Funds: by PCC resolution, interest earned is allocated primarily to the Reserve Fund the object of which is church and hall maintenance. It remains within the competence of the Council to allocate interest to the restricted funds on this or an average balance basis by further resolution.

Unrestricted funds are general funds, which can be used for the ordinary purposes of the PCC.

Incoming Resources: Planned giving, collections and donations are recognised when received. Tax refunds are recognised when the incoming resources to which they relate is received. Grants and Legacies are accounted for when the PCC is legally entitled to the amounts due. Interest as when it is accrued by the payer. All other income is recognised when it is received. All incoming resources are accounted for gross.

Resources expended: Grants and donations are accounted for when paid over, or when awarded, if that award creates a binding obligation on the PCC.

THE PAROCHIAL CHURCH COUNCIL OF THE ECCLESIASTICAL PARISH OF  
**ST MARY THE VIRGIN SWANLEY**  
ANNUAL REPORT & ACCOUNTS FOR THE YEAR ENDED 31 DECEMBER 2023

Diocesan Share: The parish share is a voluntary payment which is set by the PCC as an aspiration in the Autumn of each year. The Council then uses its best endeavours to meet the offer made to the diocese as part of the annual cycle which is suggested by the Bishop. Any parish share unpaid at 31 December is therefore not provided for in these accounts.

**1c Fixed Assets**

Consecrated and benefice property of any kind is excluded from the accounts by section 10 of the Charities Act 2011.

Movable church furnishings held by the vicar and churchwardens on special trust from the PCC and which require a faculty for disposal are inalienable property, listed in the Church's inventory, which can be inspected (at any reasonable time.) For anything acquired prior to 2000, there is insufficient cost information available and therefore such assets are not valued in the financial statements.

Subsequently all equipment used within the church premises costing less than £1,000 is written off when incurred, any equipment costing £1,000 or more is depreciated on a straight line basis over 4 years.

The PCC owns 26% of the value of the curate's house in Pinks Hill, Swanley so it was included at a deemed cost being its 2003 valuation, its cost being depreciated at £1,000 with effect from 2006.

The property was sold during the 2023 financial year and has now been fully removed from financial reports.

## **NOTES TO THE FINANCIAL STATEMENTS**

### **2 Income**

	Unrestricted Funds £	Restricted Funds £	Total 2023 £	Total 2022 £
<b>2a Voluntary Income</b>				
Planned Giving & Gift Aid donations	11,018	-	<b>11,018</b>	11,708
Tax recoverable: Church	3,743	-	<b>3,743</b>	3,598
Collections: occasional offices	1,655	-	<b>1,655</b>	679
Collections: open plate	462	-	<b>462</b>	372
Donations: Maintenance & ministry	38	18,952	<b>18,990</b>	1,808
Mission Projects & Charity Funds donations	80	-	<b>80</b>	145
<b>Total 2a Voluntary Income</b>	<b>16,996</b>	<b>18,952</b>	<b>35,948</b>	<b>18,310</b>
<b>2b Activities for generating funds</b>				
Fairs and socials	2,539	-	<b>2,539</b>	1,410
Income from printing	343	-	<b>343</b>	404
Hall Letting	-	-	<b>-</b>	37,778
100 Club	2,347	-	<b>2,347</b>	2,326
Bingo	0	-	<b>0</b>	0
<b>Total 2b Activities for generating funds</b>	<b>5,229</b>	<b>-</b>	<b>5,229</b>	<b>41,918</b>
<b>2c Income from investments</b>				
Deposit accounts	-	2,241	<b>2,241</b>	879
<b>Total 2c Income from investments</b>	<b>-</b>	<b>2,241</b>	<b>2,241</b>	<b>879</b>
<b>2d Income from church activities</b>				
Social activities, coffee mornings, catering	1,658	-	<b>1,658</b>	184
Fees: funerals and weddings	7,071	-	<b>7,071</b>	7,258
Fees: organist, choir, sacristy	2,753	-	<b>2,753</b>	4,463
Bible Alive	108	-	<b>108</b>	90
<b>Total 2d Income from church activities</b>	<b>11,590</b>	<b>-</b>	<b>11,590</b>	<b>11,995</b>
<b>2f Pilgrimages</b>				
Walsingham Pilgrimage	-	-	<b>-</b>	5,102
<b>Total 2f Pilgrimages</b>	<b>-</b>	<b>-</b>	<b>-</b>	<b>5,102</b>
<b>TOTAL INCOME</b>	<b>33,815</b>	<b>21,193</b>	<b>55,008</b>	<b>79,955</b>



THE PAROCHIAL CHURCH COUNCIL OF THE ECCLESIASTICAL PARISH OF  
**ST MARY THE VIRGIN SWANLEY**  
 ANNUAL REPORT & ACCOUNTS FOR THE YEAR ENDED 31 DECEMBER 2023

## **NOTES TO THE FINANCIAL STATEMENTS**

### **3 Expenditure**

	Unrestricted Funds £	Restricted Funds £	Total 2023 £	Total 2022 £
<b>3a Church activities</b>				
Clergy Costs: Rochester Diocese & expenses	5,912	-	5,912	15,200
Organist, choir, sacristy, organ tuning	8,365	-	8,365	6,374
Church maintenance and utilities	10,780	2,643	13,423	26,055
Depreciation: curates house/equipment	1,000	-	1,000	1,000
Fellowship/bookstall/Bible Alive	90	-	90	99
Upkeep of churchyard/cemetery	6,460	-	6,460	5,882
Church hall running costs	9,720	--	9,720	12,365
Mission Projects & Charity Funds	13	111	124	90
<b>Total 3a Church Activities</b>	42,340	2754	45,094	67,065
<b>3b Generation of voluntary income</b>				
Gift Aid envelopes	51	-	51	49
<b>Total 3b Generation of voluntary income</b>	51	-	51	49
<b>3c Fundraising costs</b>				
Fetes & Social Activities	1,466	-	1,466	763
100 club	1,560	-	1,560	1,040
<b>Total 3c Fundraising costs</b>	3,026	-	3,026	1,803
<b>3d Church management and admin</b>				
Photocopying/printing/stationery	1,439	-	1,439	1,404
Administration	644	-	644	446
<b>Total 3d Church management and admin</b>	2,083	-	2,083	1,850
<b>3e Pilgrimages</b>				
Walsingham Pilgrimage	-	-	-	5,078
<b>Total 3e Pilgrimages</b>	-	-	-	5,078
<b>TOTAL EXPENDITURE</b>	47,500	2,754	50,254	75,845

## **NOTES TO THE FINANCIAL STATEMENTS**

### **4 Staff Costs**

During the year the PCC employed a church hall cleaner part time amounting to £1,240 (£2,710 in 2022), which is included within church hall running costs. No payments were large enough to attract social security costs.

### **5 Fixed Assets**

	<b>Freehold Land and buildings £</b>	<b>Church Equipment £</b>	<b>Total £</b>
<u>Cost</u>			
At 1 January 2022	<b>76,510</b>	<b>3,992</b>	<b>80,502</b>
Additions	-	-	-
Disposals	(76,510)	-	(76,510)
At 31 December 2023	<b>-</b>	<b>3,992</b>	<b>3,992</b>
<u>Depreciation</u>			
At 1 January 2023	17,000	3,992	20,992
Charge for the year	1,000	-	1,000
Depreciation on disposals	(18,000)	-	(18,000)
At 31 December 2023	<b>0.00</b>	<b>3,992</b>	<b>3,992</b>
<u>Net Book Value</u>			
At 31 December 2022	59,510	-	59,510
At 31 December 2023	-	-	-

### **6 Debtors**

	<b>Total 2023 £</b>	<b>Total 2022 £</b>
HMRC gift aid	1,827	2,063
<b>Total Debtors</b>	<b>1,827</b>	<b>2,063</b>

### **7 Creditors: amounts falling due in one year**

	<b>Total 2023 £</b>	<b>Total 2022 £</b>
Hall Decoration	-	4,050
Maintenance boiler repairs	-	599
Organ repairs	-	1,000
British Gas	1,303	2,433
Car park repairs	-	5,320
<b>Total Creditors</b>	<b>1,303</b>	<b>13,402</b>

THE PAROCHIAL CHURCH COUNCIL OF THE ECCLESIASTICAL PARISH OF  
**ST MARY THE VIRGIN SWANLEY**  
 ANNUAL REPORT & ACCOUNTS FOR THE YEAR ENDED 31 DECEMBER 2023

## **NOTES TO THE FINANCIAL STATEMENTS**

### **8 Restricted Funds**

	Balance 1 January 2023 £	Incoming Resources £	Resources Expended £	Transfers between restricted funds £	Balance 31 December 2023 £
<b>Church Activities</b>					
<b>Maintenance &amp; Ministry Funds</b>					
Reserve Fund	11,507	332	-	-	11,839
Organ Fund	1,470	-	-	-	1,470
<b>Total Maintenance &amp; Ministry</b>	<b>12,977</b>	<b>332</b>			<b>13,309</b>
<b>Mission Projects</b>					
Melba Williams Memorial	40,994	18,527	-	-	59,521
C Parkes Birthday	607	-	-	-	607
Discretionary Fund	64	-	-	-	64
Narthex	2,643	-	2,643	-	-
Lectionaries and Gospel Book	1,000	-	-	-	1,000
Churchyard Tap Fund	50	-	-	-	50
Churchyard Noticeboards	1,426	-	-	-	1,426
Heating Fund	21	-	-	-	21
Tabernacle Lighting	1	-	-	-	1
Churchyard Fence	2,416	-	-	-	2,416
Wooden Candle Stand	18	94	112	-	0
Children's Ministry	20	-	-	-	20
<b>Total Mission Projects</b>	<b>49,260</b>	<b>18,621</b>	<b>2,755</b>	-	<b>65,126</b>
<b>Charity Funds</b>					
Additional Curates Society	-	-	-	-	-
The Mission to Seafarers	-	-	-	-	-
<b>Total Charity Funds</b>	<b>-</b>	<b>-</b>	<b>-</b>	<b>-</b>	<b>-</b>
<b>Total Mission &amp; Charity</b>	<b>49,260</b>	<b>18,621</b>	<b>2,755</b>	<b>-</b>	<b>65,126</b>
<b>Total Church Activities</b>	<b>62,237</b>	<b>18,953</b>	<b>2,755</b>	<b>-</b>	<b>78,435</b>
<b>Interest</b>	<b>1,510</b>	<b>2,241</b>	<b>-</b>	<b>-</b>	<b>3,751</b>
<b>Pilgrimage Funds</b>					
Walsingham Weekend	452	-	-	-	-
<b>Total Pilgrimages</b>	<b>452</b>	<b>-</b>	<b>-</b>	<b>-</b>	<b>452</b>
<b>Total Restricted Funds</b>	<b>64,199</b>	<b>21,193</b>	<b>2,754</b>	<b>-</b>	<b>82,638</b>

### **9 Analysis of Net Assets by fund**

	Unrestricted Funds £	Restricted Funds £	Total 2023 £	Total 2022 £
Tangible fixed assets	-	-	-	59,510
Current assets	137,879	82,638	220,517	98,279
Liabilities: amounts falling due in one year	(1,303)	0	(1,303)	(13,402)

As ever,  
our thanks,  
prayer and praise  
are offered to our Heavenly Father  
together with our prayers  
for all His holy people  
in our parish  
and beyond it, too.

THE PAROCHIAL CHURCH COUNCIL OF THE ECCLESIASTICAL PARISH OF  
**ST MARY THE VIRGIN SWANLEY**  
ANNUAL REPORT & ACCOUNTS FOR THE YEAR ENDED 31 DECEMBER 2023

