



ANNUAL REPORT 2021



ANNUAL REPORT & ACCOUNTS
YEAR ENDED 31 DECEMBER 2021

REGISTERED CHARITY 1133832



CONTENTS

VICAR'S REVIEW OF 2021	3
CHURCHWARDENS' REVIEW OF 2021	4
COMMUNICATIONS	5
OUTREACH	8
CHILDREN & FAMILIES & YOUTH	11
DISCIPLESHIP	13
SEND	15
CHOIR AND MUSIC	17
BELL RINGERS	18
SAFEGUARDING	19
CHURCH BUILDING	20
THE OLD SCHOOL ROOMS	21
DEANERY AND DIOCESE	22
TRUSTEES' ANNUAL REPORT 1 JANUARY TO 31 DECEMBER 2021	23
ACCOUNTS FOR THE YEAR ENDED 31 DECEMBER 2021	34
NOTES TO THE ACCOUNTS FOR THE YEAR 1 JANUARY TO 31 DECEMBER 2021	38
INDEPENDENT EXAMINER'S REPORT	51

© Copyright Rothley Parish Church 2022. All rights reserved.

Cover picture: 'Walls of Jericho' march around the church building during Sunday morning service 22nd August 2021

VICAR'S REVIEW OF 2021

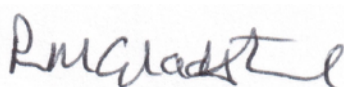
I want to begin this review with a huge thanks to the whole Church community for the way they have worked together and made sacrifices to enable us, through all the challenges that the pandemic has brought, to sustain and rebuild the life of the church. Because of this, through all the ever-changing guidelines and directives, we have been able, under God, to give expression to what it means to be his church in this place - making disciples, growing in our discipleship and showing God's love to the world. This has required us all to make compromises, to be willing to experiment, to take risks and to be gracious and patient with one another when things don't work out or do not suit our convenience. That willingness, grace and patience have been shown in abundance.

There was a time that many of us will remember, when across the whole nation, we watched the same TV programmes at the same time on the same day and talked about them at school or work the next morning, in the full knowledge that more than likely everyone knew what we were talking about. In recent years, especially exacerbated by the time people have spent alone during lockdowns, that shared narrative of life has been particularised, fragmented and shattered with each person accessing their own preferred live streams/podcasts, box sets, music streaming/news channels. As we go forwards, we want to build a pattern of Church activity that will, on the one hand, be accessible to as many people in the parish as possible and, on the other hand, enable all the current church family to participate and flourish. This trend of particularisation and fragmentation affects the whole of our lives and makes planning a pattern of Church activity that will suit everyone like the quest for the holy grail. Churches across the whole nation are being forced to recognise that established patterns

rarely suit the new situation we find ourselves in. We are seeking to discern the best way forward and are in the midst of a period of experimentation in which many new things are flourishing and older patterns have been revitalised. Alongside this we have continued to seek to give people the opportunity to explore what God is calling them to, to develop gifts and try out new ministries. All of this will be essential in equipping the church for whatever lies ahead.

We owe Mike Ferguson and Angela Neill, Margaret Rouse and Fred Sleath, who have been our Churchwardens through this year, a great debt of gratitude. They have been a constant support and have offered wise advice as we have adapted to the changing regulations, and they have worked on risk assessments - and together with Ray Prince - ensured that we could meet in the building as much as possible in a safe and responsible way.

I would also like to thank David Wilson who has provided invaluable support and wise counsel and taken on significant extra work in serving this church throughout the pandemic.



Rob Gladstone
Vicar

CHURCHWARDENS' REVIEW OF 2021

2021 has seen some positive changes after the disruptions of 2020. It has been good to be able to celebrate Communion again, although we are not using the chalice at present; and to be able to hold weddings and funerals in church again. Unlike last year, we were able to gather for Festivals, and the Memorial and Remembrance services were well attended and much appreciated. There were two Carols by Candlelight services, ensuring that the number of attendees remained within comfortable limits. The pattern of weekly services also helps to ensure against overcrowding with virtually equal attendances at the 9.30 and 11am services. There has been a steady increase in numbers at both services, although there is some fluctuation in response to outbreaks of COVID-19. It has been good to see the *Growing Families* and the monthly *Shine* services develop, and the team have also run events, such as the Light Party at the end of November, which are attracting families from outside the church. There have been several baptisms this year. Following consultation, the PCC agreed to continue the two morning services and also that there will be a 4pm service during the winter. This pattern will be reviewed in 2022. One service, usually the 9.30am, is live streamed each Sunday and this is very popular with members who cannot come to church.

As churchwardens, we have spent a good deal of time coming to terms with changing regulations as we aim to keep us all COVID-free.

Fortunately, we have a large medieval building which allows us to give people more space and through which we can allow a through current of air. The clerestory windows are opened before services, all three main doors are opened and, where possible, left slightly ajar. Initially, we placed cards on the pews indicating where people should sit. We do not use these now, but request that everyone is aware of other people and leaves appropriate space. It is now mandatory for everyone to wear a face covering, unless medically unable to do so. At present, we

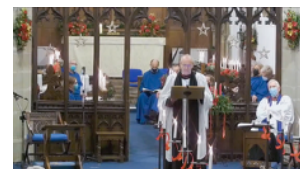
cannot serve coffee, although we did manage to do this for a few weeks during the Summer and Autumn. We have maintained a Track and Trace system from the first opening of the church. The app is available and a written list which is retained for as long as necessary.

Mary Macrae has now retired from acting as vergers for weddings and funerals and we would like to thank her for her faithful service over many years. Her steady, competent presence has helped and reassured many brides and she was a source of real comfort to mourners. We also wish to thank Derek Houghton who continues in that role and Richard Yates who has joined him; the assistant wardens Jean Johnson, Alison Parkinson, Ray Prince and Marion Whitby; Ken Arkley, who, although he has stepped down as assistant warden, still helps us when we need him; Angela Neill who is our new assistant warden. We are also very grateful to Ray Prince who has taken on the responsibility for anything to do with the church building – from light bulbs to Quinquennial reports; to Marion Whitby who oversees the electoral roll and other documentation; to the choir who have kept going through all the changes; and to the many other people who contribute to the life and smooth running of the church and the services – welcoming, reading, leading prayers, arranging flowers, serving coffee, delivering Fellowship Post and other jobs too numerous to mention here. You are all very much appreciated. Thank you.

As churchwardens we meet with Rob every month and attend PCC and Business Committee meetings. It has been encouraging to be able to meet face to face instead of on-screen. Hopefully, we shall be able to continue with this. We are grateful to God for all His blessings this year and, as we look forward to more changes and new challenges in 2022, we place our trust in Him that we shall be able to meet them.

Fred Sleath and Margaret Rouse

COMMUNICATIONS



Pre-recorded online events: Holy Week reflections, Easter Sunday service; live streamed services: Remembrance Sunday, Carols by Candlelight

During this last year we again used technology widely to communicate to the Church congregation and wider into our community with the gospel message, seeking to encourage and give hope during these COVID-19 times.

Pre-recorded services

In 2021, we published 32 pre-recorded services and events (including Lent Talks, etc.) before switching to live streaming from the 23rd May when in-church services resumed. We are very grateful to Paul Parkinson for the many, many hours producing these services every week, not just in 2021 but also for the majority of 2020.

Live streaming

Thanks to our new sound and video facilities we have attempted to produce at least one Church service every week as a livestream which can also be watched later. Thanks to Sue Jackson for making sure the settings are correct before each recording and ensuring that our hymns and songs which are still under copyright are compliant with our CCLI copyright licenses and YouTube copyright policies.

YouTube

All our livestream services and Rob's Morning Prayer are available on the [Rothley Parish Church YouTube channel](#). The graph at the bottom of page 6 shows views for 2021 (equivalent to the one in the 2020 Annual Report). This shows that the total number of channel views in 2021 (13,024) was lower than for 2020 (15,907). The most popular services were 'Thy Kingdom Come - Ascension Day' (299), 'Hail Glorious King - Good Friday' (281), 'Pentecost Sunday' (243) and 'Easter Sunday' (225). The prominent spike on the 13 July was for the *Rothley School Leavers Assembly* (445 views). The most popular devices for watching

were (in order) computer, mobile phone, tablet, TV and games console. Half of the viewers accessed the videos directly on the RPC YouTube channel, and the remainder via other websites/links (e.g. church website, Facebook, etc.). The total number of RPC YouTube channel views since inception is currently 27,903 (up from 15,600 a year ago).

Website

Our website www.rothleychurch.org.uk, has continued to get over 10 views a day with visitors locally, from across the country, as well as some from overseas. In total we had 3,963 visits, down from 4,932 last year. 15,283 pages were viewed, down from 27,105. The top five pages visited (2020 figures in brackets) are:

Home Page	6,714	(11,202)
Webcasts	2,721	(6,477)
Old School Rooms	793	(515)
Services	719	(857)
Who's Who	531	(776)

There were only three pages that saw an increase in visitors from last year: The *Old School Rooms* has been shown above; *Babies and Toddlers* increased to 129 from 87 visits and *Children and Families* increased to 114 from 67 visits. 45% of visits to our website were from mobiles, 40% from a desktop and 14% from a tablet.

Facebook

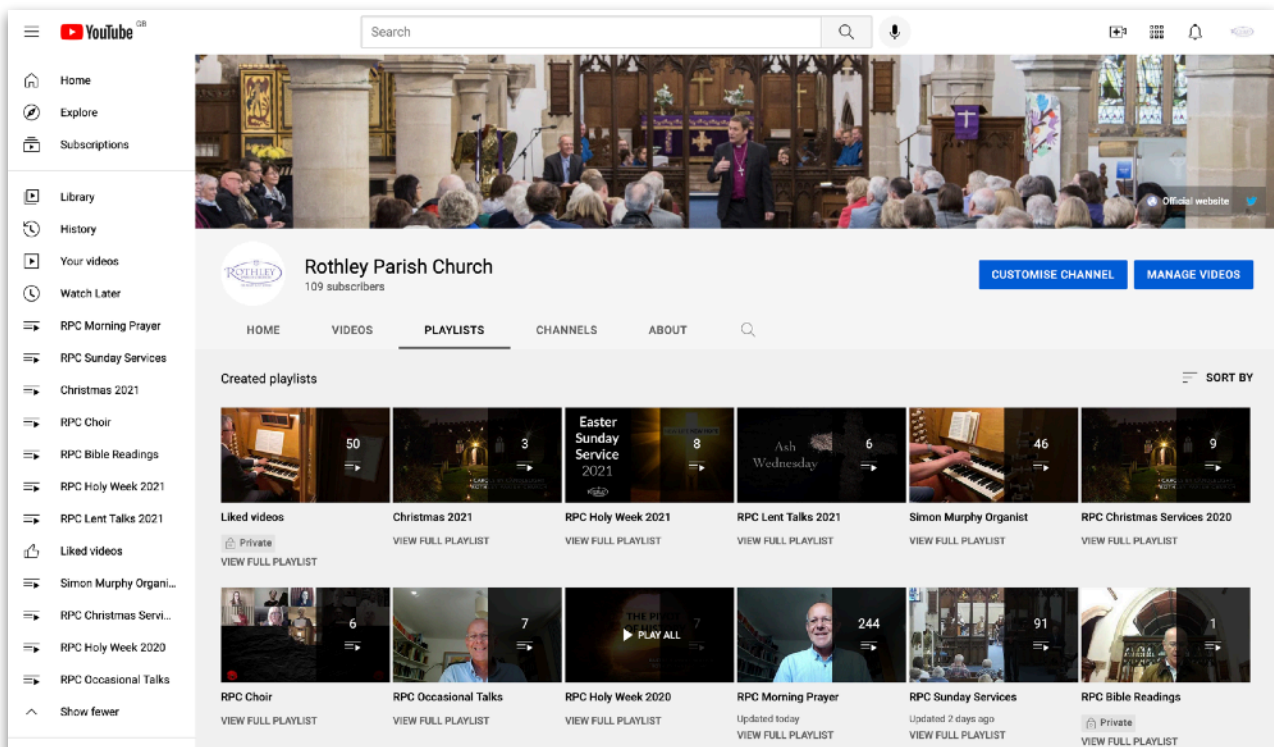
The [Rothley Parish Church Facebook group](#) is used for sharing news, views and information and has also provided a link most mornings to *Rob's Morning Prayer*. We now have 155 followers, up from 56 in 2018. We have forwarded invitations to special services as an outreach to the wider community through the Facebook group *Spotted Rothley*, our thanks to them for reposting out our message to over 9,700 followers each time.

Twitter

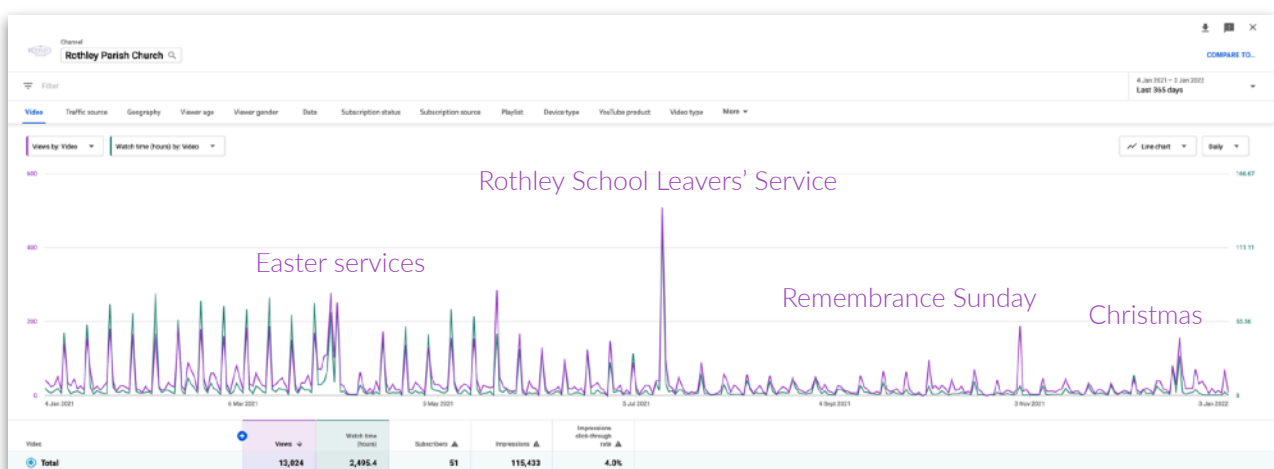
Our Twitter account [@rothleychurch](#) is also used to promote services and special events, not just to our own congregation but wider into the

community. We have 201 followers, up from 197 in 2020.

Stephen Thomason



Rothley Parish Church YouTube Channel showing playlists for Sunday Services, Morning Prayer and other events



Rothley Parish Church YouTube Channel statistics showing daily views throughout 2021

Low-tech communications

Communication in church life is important - how else will people hear the Good News if we don't tell them where it's being broadcast? We try to embrace as many people as possible in our communications - those inside and outside of our immediate church community, the wider village and those affected by things that happen here in Rothley, such as family and friends who might venture here for events and occasions.

The *Fellowship Post* continues to keep the church membership in touch with each other and what goes on here week by week, which we know many people appreciate. I am still grateful to the four people who deliver paper copies to about 25 of our church members who don't have easy access to computers and mostly knock on their doors to have a quick chat with them too, as well as Fred Sleath who often delivers the bundles to the deliverers. We continue to include the order of service for the livestream each week, to help people who need/prefer to stay at home. However, we are aware that a small number of people don't have access to view the livestreams, but have DVD players, so DVDs can also now be made available to those who ask.

When it has been COVID-safe to do so throughout the last year, we have tried to advertise specific events through paper posters on local noticeboards and lampposts, electronic fliers via the school email network where relevant, emails to our own contacts such as baptism candidates' families etc, and hand-delivered paper invitations too. We have also used our own [church website](#), [Facebook page](#) and [Twitter](#), as well as local social media accounts such as *Spotted Rothley*.

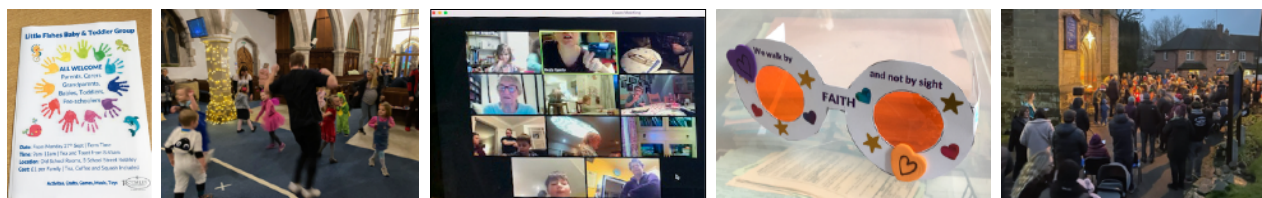
We now have an audio-visual system installed in church, which means that many of the words used in a service can now appear on the screens via PowerPoint slides. However, we do appreciate that some people are not able to comfortably look at the screens, so there are always a small number of service orders printed and available in church. To compile our service sheets and PowerPoints, for a number of years we have used a database called HymnQuest, which gives us access to the words of over 28,000 hymns! However, we are looking into subscribing instead to a database which will enable us to put our PowerPoint slides together in a more co-ordinated way for both hymns and liturgy, and with a better end result. We will be looking carefully at various options available and hope to draw on the previous experience of some of our church members to make the right choice.

We are aware that there are faults within the delivery of our communications, but we always try to do our best and make improvements where possible. I am always pleased to receive thanks for keeping in touch, particularly via the *Fellowship Post*, but equally I would welcome suggestions for tweaks and changes to the content.

We are now trying to gather together a group to be involved with Church communications, both internal and external, high tech and low tech, so we would be grateful for any interest from anyone in any of these areas - you don't have to be highly technical to be involved in it. Please contact me if you have any time or ideas to offer to such a group.

Liz Sleath

OUTREACH



Little Fishes poster; children's event in church; pancake day on Zoom; Summer Sunday service crafts; Children's Carol Service outside church

Evangelism

A key priority for our Church is to bring the good news of God's saving grace through Jesus Christ to every home in the parish. As house building has continued on new estates, most recently on Oaktree Way, we particularly want to reach those who have recently moved into the parish. We recognise that our ministry through the school continues to be critical to building relationships with the many young families that have moved onto these estates.

There are two key aspects to this. The first is in supporting the school in its attempts to develop its premises such that every child in the parish can be offered a place in the school. The second is in having appropriate Foundation Governors to support the school in maintaining and developing a clear Christian ethos.

With both of these in place we can be confident that the children and their families will hear the gospel of our Lord Jesus Christ. As with the previous year, the ongoing lockdowns and restrictions relating to COVID-19 have at times limited our ability to meet people. We have taken every opportunity as restrictions have been lifted to meet people face to face in the school and community and this has been supplemented by an online presence and social media - both of which are very crowded places and challenging to establish traction.

In the coming year we want to focus on once again establishing evangelism at the heart of our Church life, beginning with the PCC considering how they can most effectively lead the church in this.

Little Fishes

For many years Margaret Offley and helpers ran the church-based toddler group in The Old School Rooms on Thursday afternoons, but she decided for personal reasons not to return to that once lockdown restrictions were lifted. So a group of mums of toddlers and younger school children were encouraged to get together and take on the running of the group, bringing their own style to it. The best time for most of the helpers (who are all busy working mums) was found to be Monday morning, so **Little Fishes Parent & Baby/Toddler Group** was launched.

Mothers' Union wanted to get involved and provide tea and toast for busy school mums, so they do this from 8.45am whilst the rest of the group is setting up for the session. Linda Poole kindly runs a rota of volunteers who help in the kitchen, whilst others meet and greet and host the play area in the main room. Later, everyone gathers together to hear a Bible story or a story from a Christian book and sing nursery rhymes/songs, followed by drinks and biscuits. The main group contact is now Susie Clark. After a few weeks of trial and error the group asked for other church members to help set the toys and equipment out on a Sunday evening and are very grateful for this help. Please do come and visit the group one Monday morning from 9am, where you'll find a warm welcome, noise, mess, tea and toast!

RCMG (Rothley Church Men's Group)

2021 was the 25th Anniversary of the **RCMG (Rothley Church Men's Group)** and we had hoped to have some celebrations to mark the achievement; however, the continuing pandemic

prevented our usual programme of activities taking place. Established as a means to bring the “blokes” together in our Church, there cannot be many Church Men’s groups that have survived this long. Initially called MBA because at the time there was a popular TV programme called *Men Behaving Badly*, we decided that our group should stand for *Men Behaving Acceptably*.

As such the men’s group (MBA and now RCMG) was born to offer the opportunity to all men to meet in fellowship: sharing and learning from life’s experiences and seeking to further develop their understanding of the gospel and its relevance in today’s world.

In the last year we have continued to support each other wherever practical and possible considering the pandemic restrictions, however have chosen not to have any arranged events.

We were intending to start organising events again in 2022, potentially after Easter, however with the surge in the latest Coronavirus variant this may prove to be difficult. So, what will 2022 bring for the men’s group? Only the Lord knows.

Care home links

It has been sad that during this “COVID” year we have been seriously curtailed in our visits and ministry at [Cedar House](#). We were invited to host the BBC Radio Leicester “*Sing Christmas*” and so encourage the residents and staff to sing the carols and listen to the Bible readings which came to us from Leicester Cathedral. Each resident received a personally signed greeting card from our team on behalf of Rothley Parish Church both at Easter and Christmas. We are hopeful of monthly visits on the first Monday during 2022 and our regular team, Pam Harvey, Val Wadge, Margaret Houghton, Jean Johnson, David and Linda Hodgson, remain prayerful and keen.

As with many other activities during the continuing restrictions around the COVID pandemic, it has not been possible for us to meet together at Babington Court. The communal lounge has not been available for our use. Our small group has been depleted by some residents moving to Cedar House or other care homes. So,

at present, a short service such as we had, followed by a valuable time together over refreshments is no longer viable. However, we have endeavoured to keep in touch by sending cards and a little gift at Christmas to those who have moved and to members of our faithful support team. Alan and Viv visited one resident at Babington, with her permission. Margaret Offley is also in touch there, still. Our hope is that, when the warmer weather arrives, we may be able to invite a group to meet together over tea and cakes in a local venue and talk through options for the future.

There are no plans to return to Mountview following the pandemic.

Bereavement Support

We were delighted to be able to hold our annual memorial service, *Celebration of Lives*, in November. This was an opportunity to remember those who had died during the last two years, since we were last able to hold a memorial service, and to offer support to the bereaved. Many had been allowed only small-scale funerals because of COVID-19 restrictions. The service was well-attended and appreciated. The reading of the names of those who had died during the pandemic was helpful and powerful for their families and friends.

Wednesday Club

For six months, the amalgamation of [Wednesday Club](#) with Wednesday Lunches has been operating in the form of a twice-monthly lunch in the Old School Rooms. From the level of chatter and the obvious delight of companionship taking place, the arrangement seems to be popular. We have welcomed new visitors who have become regulars, joined in carol singing at the Christmas lunch and celebrated our first 100th birthday.

All this would not have been possible without the wonderful co-operation of Sandra Shaw-Pearce and her helpers in providing varied menus at a reasonable cost and with a lot of hard work and we do thank them. At the same time, it is appropriate to thank all those who have given time, energy and prayer to the running of Wednesday Club in the past. Many have given

advice and help in organising each of the afternoons, finding speakers – many of whom gave their services free, making cakes, giving lifts to and from members' homes and assisting in outings. The support of the Church and its members has ensured a friendly and thoughtful welcome throughout the many years since its inception as Friday Club in the mid-1990s

Wednesday Lunches

Wednesday Lunches recommenced on September 8th after an 18-month COVID-imposed lockdown. The regular members of Lunches and of the Wednesday Club had been invited and 22 of us sat down to share a humble salad meal. As anticipated, the opportunity to eat in company was much appreciated! We have doubled our output and lunches now operate on the second and fourth Wednesdays of each month, with take-up remaining constantly higher than before, always greater than 20 and culminating in 35 of us sharing a festive Christmas dinner on December 15th, when David Hodgson kindly came along to play the piano for us to sing a few carols.

Meals follow the same pattern of salad with jacket potatoes from April to October and a hot meal from October to March. Most dietary needs can be met - we already feed two vegetarians, one diabetic, one gluten-free and one low-fat eater among our regular clients. We are excited to be celebrating the 100th birthday (a first for us) of one of our longest serving customers, Margaret Foister, at our next meeting on 26th January 2022, and there will be a Queen's Jubilee party on June 8th 2022.

Wednesday Lunches holds out the hand of friendship to anyone who is fed up of eating in isolation, or is bored with the view of their own kitchen walls. It's no demonstration of cordon bleu cookery skills, but it does offer a warm and friendly atmosphere and there's always a welcoming smile on hand. The only requirement is to pre-book your meal by Monday lunchtime with Sandra so she can shop and cook adequately.

CHILDREN & FAMILIES & YOUTH



Shine: puppets & script for Harvest Shine, pumpkins for light party; Sunday School: Easter garden, Nativity play; Breakthrough pizza party

The Growing Families continues as a WhatsApp group, keeping parents of primary-school-aged children in touch with each other and with what is happening at church week by week and gathering for occasional events and an ad hoc housegroup. A number of GF parents are now also involved in leading Sunday services and many now attend the more informal 11am services and Shine.

In May 2021, it was planned that Pentecost Sunday would be the day when Rothley Church 'opened up again'. Having been lobbied by parents who wanted families to get back to church asap, having not met in church since March 2020, we thought this would be a good day for a family service at 4pm, which we hoped would be outside, with a theme of celebrating all things light and bright, which we decided to call '**Shine**'.

Sadly, it rained and we held it inside, but we enjoyed a very happy atmosphere of "organised chaos". We then decided that this would happen monthly under the banner of *Shine* and it would often be outside to make it a less challenging venue for those new to the church.

We were then challenged to make it different from regular services, so each time we try to do that - sometimes it is formatted like a service with surprise elements, like Harvest with a puppet sketch and a cone of chips each at the end and sometimes it's completely not like a service - such as our Light Party *Sparkle & Shine* with activities all over the church including a disco, hot dogs and cakes! We also had a tug-of-war, planted our painted footprints on a sheet as we prayed, and held an event where we made Christingles together and sang carols in

December (inside!) and then outside again for a family Carol Service on Christmas Eve. *Shine* is held at 4 pm on the first Sunday each month.

The group of parents from the Growing Families Group who started *Shine* were then asked to plan and lead the informal Summer Services for families, including the talks. This led to them leading the first part of the 11am services with Sunday School, and the all-age services which started in September. However, it has now been decided that the laity should regularly lead all the way through the informal services on the days there is Sunday School, and occasionally for the other all-age family services too.

Since September, **Sunday School** has been meeting face-to-face again in the Old School Rooms, but only twice a month. Liz Sleath, Jo Beals and Margaret Offley are now the leaders, with occasional help from parents. All the older group (Explorers) moved up to The Grid, together with their leaders, so now the oldest children in Sunday School are 9 years old. With new children joining, we still have about 24 on our register but weekly attendance varies dramatically.

The Grid is now run by Mark Baird, Simon Beals & Rashaen Cummings, usually based at the Spencer family's home next door to church. They have 10 to 12 members on their register and enjoy Bible study and games together on a Sunday morning, twice a month. We try to follow the same topics in both groups, still using the *Go Teach* books. Grid and Sunday School worked together to produce the Nativity production in church just before Christmas.

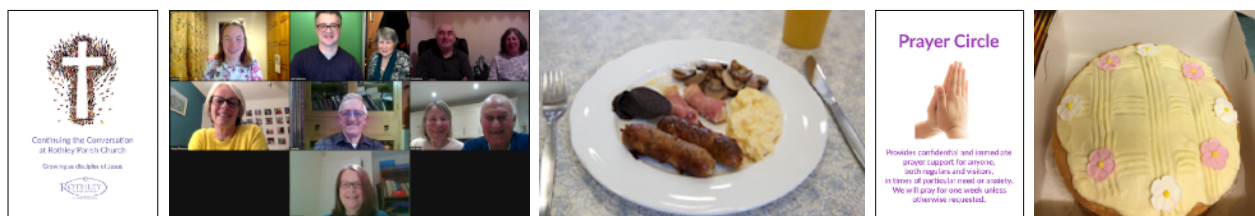
Breakthrough continues as the group for 16- to 18-year-olds. This was run during the last year mainly on Sunday evenings by Fred Sleath and Ros Taylor, initially via Zoom and then face-to-face in each other's homes, with occasional meet-ups for pizza in the village or at the Old School Rooms! They have 4 members who regularly meet.

We have continued to seek to support the Christian ethos of **Rothley Primary School** in

whatever ways we can. Rob Gladstone and David Wilson continued to produce on-line assemblies, some of which were used with individual classes. Since September they were able to take some assemblies face-to-face in school and church, usually with one year group at a time, and these were live-streamed round to the other classes when possible.

Liz Sleath

DISCIPLESHIP



Discipleship leaflet; Housegroup meeting on Zoom; Men's Breakfast; Prayer Circle pew card; Cake Ministry

Discipleship is about growing in faith as followers of Jesus. Paul's vision of discipleship in **Ephesians 4:7-16** continues to be our church vision for discipleship, with a focus on growing in depth of discipleship through our services, small groups and personal prayer, Bible study and reading of Christian literature. Whilst in 2021 the nature of these discipleship activities was impacted by the pandemic, the report below emphasises the ways in which, as a church, we have continued to grow and support each other as disciples of Jesus Christ. The discipleship working group of the **PCC** continues to work on strategic leadership in this area.

Housegroups: Despite the inevitable upheaval caused by COVID-19, housegroups remain central to the spiritual health and growth of our church; indeed, one new group was formed during the year, for which we thank God - this makes ten groups in all. The group leaders have used different ways to keep the groups together, to care for each other and to learn together. Whilst there have been bumps in the road which meant that some groups stopped meeting for a time, the use of Zoom and regular circulated notes from leaders provided momentum even at the most testing times during the pandemic. Most groups meet fortnightly, on various days of the week, some in the evening and some during the day, for Bible study, discussion and prayer. The pastoral caring dimension of group life has been particularly valued during the pandemic.

Men's breakfast: The men's breakfast housegroup meets monthly for fellowship and Bible study, this year studying the book of Galatians and how it can be applied to our daily

lives. This is particularly important for this group who seek to learn more about how to be Christians in the workplace. During 2021 attendance increased to between 6 and 12, with the group providing much needed mutual and emotional support as the group's members have struggled to balance the unpredictable demands of work with family responsibilities.

In August a walk over the Charnwood Hills concluded with drinks and conversation at the Curzon Arms. This is always a popular event, attracting a number of guests. In Galatians, Paul reminds us that we do not need the many external trappings that so easily distract us from a life in Christ. A modern-day equivalent might be social media. The group had a great day out in November at the **Midlands Men's Convention** where one of the valuable sessions looked at the impact of social media on our Christian lives. The group are planning an informal Sunday service on the theme of Digital Discipleship.

Bible reading notes: We actively encourage Bible study through our many church groups, but we also strongly encourage personal Bible study. For those who wish to have daily Bible reading notes in a printed format, we continue to facilitate the procurement and distribution of many different books, whilst also encouraging the use of online daily Bible reading media, including the **Daily Bible Reading** link on the Rothley Church website. In this past year we have had three individuals move from a printed format of daily Bible reading to an online format. 32 individuals use the printed format, using six different books.

Prayer & Praise: During the first part of the year, a bi-weekly 'Prayer & Praise' Guide was issued to all church members, to aid a 'corporate' time of prayer on Tuesdays. Prayer meetings restarted in the Old School Rooms in August. The prayer topics have been varied, but always seeking to maintain a prayer-covering over our church's life and growth, its leaders, and its various events, as well as for our village and nation. The 'Praise-times' allow us to thank and praise God at a personal level and it is encouraging to pray with folk who share a desire to see God at work in our church family and community.

Mothers' Union: 2021 was the 100th anniversary of the death of Mary Sumner, the Mothers' Union founder, and the 145th anniversary of the Mothers' Union. Unfortunately, it was not a year where these anniversaries could be celebrated as would have been the case pre-pandemic. Carolyn, the branch leader, continued to send a monthly meeting letter, with prayers and notices whilst the group has not met in person. Awareness of modern-day slavery continued to be an item of discussion within the Mothers' Union and members continued to pray and keep contact with members overseas. Fundraising activities were unfortunately scaled down, although the achievement by Margaret Rouse and Lin Luce on their sponsored walk of 26 miles around the village over a number of weeks raised over £1000. The Away From It All holiday for 13 families went ahead this year after not being able to take place in 2020.

The **Prayer Circle** comprises 11 people who provide immediate, fast prayer support for anyone in times of particular stress or specific need. Trevor West, Jean Arkley and Valerie Joyce are the contacts who send requests round the circle. The other members are anonymous. All requests are treated with absolute confidentiality. This year 54 requests were received. Whilst normally the group pray for one week, there have been a number of situations which have been ongoing for weeks, and occasionally months. This ministry has been valued, with many commenting they have felt upheld in times of distress.

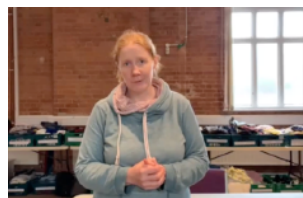
Pastoral Care: The church seeks to follow Christ's example in caring for those in need in our church and in our community. The aim has been to find ways to support those in hospital, sick, bereaved, isolated or feeling lonely. This year, owing to the pandemic, pastoral care has again been challenging, but there has been a real willingness from people in the fellowship to be involved, whether formally as a designated pastoral visitor or informally.

The role of Pastoral Coordinator has enabled people in the fellowship to ask for help for themselves or for others and has enabled ongoing liaison with the Ministry Team. Whilst visits have been limited, contact has been maintained by frequent phone calls, texts, emails and cards. As many of the elderly do not have access to modern technology, the distribution of the printed 'Fellowship Post' has continued to prove a vital link with the church. These were distributed by volunteers who took the opportunity to check on the well-being of the recipients. Provision of meals and the 'cake ministry' have continued to demonstrate the church's love and care for those going through difficult times and maybe on their own. Transport by volunteers has enabled visits to hospital, doctors' appointments and vaccinations. Also, volunteers helped with shopping, posting letters and the collection of prescriptions.

Many people in the church and in the community have found that prayer by members of the church fellowship has supported and comforted them. In the wider community, the Soar Valley Community Food Project has been actively supported by the church. This project has seen a substantial increase in client numbers this year. Church members volunteer at the Food Bank and the fellowship has given generous donations of food and money. At Christmas, toys were given by the congregation for the Rotary Club's 'Toys on the Table' appeal.

Alison Godfrey

SEND



Paul & Cathy Middleton of Mercy Air; Tim Jackson from the Soar Valley Food Project; Bridget Patel from Triangle; Brada Radanovic from Crosslinks

Our aim is to **send out** and support Christians here and in the wider world, so that others may hear and know God's love in Jesus, so we seek to be a church with God's heart for the nations.

We aim to support a variety of organisations, some are local, others in the wider world. It is important for us as a church not only to be concerned about our own spiritual life and witness, but to be outward looking in our prayers and our giving.

REGULAR GIVING

During the past year we have supported the following organisations through our tithe, which is 10% of our church's donations income:

- **Church Pastoral Aid Society (CPAS)** which supports churches in the UK and Ireland, providing resources for leaders, children and young people's work, runs Christian holiday camps and is the patron of Rothley Church;
- **Crosslinks**, specifically supporting Jirka and Keira Kralovi who work with students in the Czech Republic, and also Brada and Yatzat Radanovic in Serbia;
- **Tearfund**, which works with local churches and organisations in more than 50 countries to tackle the complex challenges of poverty;
- **Dioceses of Mount Kilimanjaro and Kiteto**, Tanzania which have been linked with Leicester Diocese since 1982;

- local charities (**Y Advice Centre** and **Triangle**, Leicester and **The Carpenter's Arms**, Loughborough) which provide help and support to the homeless in Leicestershire and also drug addiction services.

DISCRETIONARY GIVING

15% of our tithe is reserved for discretionary giving. This year we supported:

- **Mothers' Union Overseas Development Fund**
- **Mercy Air**
- **The Oakes Holiday Centre**
- **Soar Valley Community Food Project**
- **CPAS School Ventures**.

We also collect for **Christian Aid** annually. There have been emergency appeals on behalf of Tearfund for crisis situations; there are regular donations of food to the food bank and clothes to Triangle; and there is a Fair Trade stall at the back of church.

We have kept our church family up to date by means of regular information and updates on the organisations listed above in the weekly Fellowship Post. There are weekly prayer pointers, and also links to prayer letters. We also feature information and prayer requests for fair trade, asylum seekers and the persecuted church around the world.

Usually, we have speakers from organisations we support in church services several times a year, but this has not been possible in 2021. However, videos have been shown from

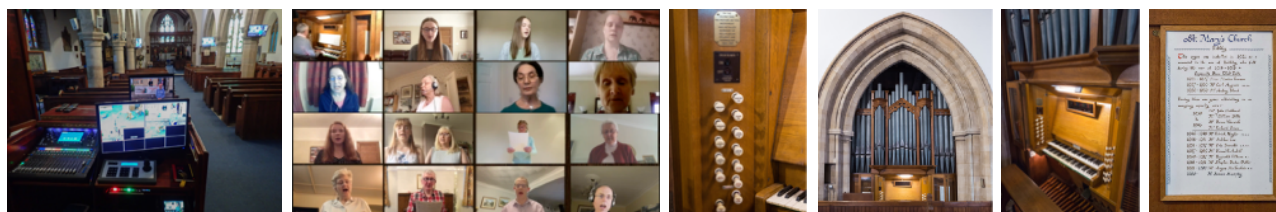
Mercy Air, Christian Aid, Crosslinks, Tanzania, Triangle and our local food bank.

In addition, the sermon series *Caring for God's Creation* coincided with the COP26 conference in November and brought to our attention issues affecting, not only ourselves, but more especially those in developing countries which are a particular concern of Tearfund and other organisations we support.

The 'Send' group meets regularly throughout the year to consider the current needs of the societies, how best to raise awareness of the organisations we support, to keep us updated and to encourage prayer. We have greatly benefitted from the untiring and enthusiastic work of Ros Taylor who was chair of our meetings and represented Tearfund with great commitment.

Margaret Leverment

CHOIR AND MUSIC



Audio Visual equipment and video screen; choir in Easter Sunday online service; centenary of the church organ

This year, 2021, we marked the centenary of the installation of our fine church organ with a concert held on Saturday 9th October. The instrument was originally installed in 1921 as a lasting memorial to the men of Rothley who fought and died in the 1914-1918 Great War. This concert was a real highlight and enabled us to rededicate the organ to the service of God for many years to come.

The organ has provided the musical 'backbone' to the majority of services since 1921 and this year, despite lockdowns, it has continued to play its part. Sadly, when we were not able to meet in numbers due to UK Government restrictions, we did manage to attain a degree of continuity through the combination of audio-visual and internet technologies. I know that, whilst most of us were not able to be physically seated in church, this technology did provide us with a real sense of being there and being together. It brought Rothley Church into people's own homes and, I'm sure, removed the sense of isolation being separated from the church building and, more importantly, the church family.

It felt so good to get back to a sense of normality when we were able to re-open the church building and gradually build from the weekly recordings, to a small choir lead at the front (with no congregational singing), to a full choir and resumption of singing for all.

For so many of us, this year has been a very tough one. We have had to deal with all sorts of changes to our lives that we genuinely never thought possible. I am so grateful that I continue to have a strong desire to lead the traditional part of our church music with the organ and

choir, as well as contribute to the more 'experimental' services that we have been trialling.

We are blessed to have many singers and instrumentalists who have added their talents and contributions to the new services such as 'Shine' and the informal morning services. I thank everyone who has helped in whatever way with the music in 2021 and must place on record my sincere thanks to David Hodgson for not only supporting me in playing for occasional services, but for the hours spent writing and providing numerous musical arrangements for the hymns and songs sung across all of our services, especially the new and experimental ones. It would be remiss of me not to mention his last verse key changes which have been a revelation!

We cannot foretell what 2022 will have in store, but my sincere hope is that through the struggles and adversity that most of us have felt during the past two years, we can continue, through our devotion, to bring more people to faith in Jesus Christ our Lord, through Scripture, prayer and across our different styles of worship.

Simon Murphy

Handbells

Rothley Handbell Ringers have not yet started to meet again.

Ruth Gilmore

BELL RINGERS

At the outset of 2021, like the remainder of the Church family, the Tower Bell Ringers were subject to the COVID-19 restrictions. This stopped all the bells being rung together until 24th June 2021. During that period, however, a small group of ringers gathered on one occasion, within the 'lockdown' constraints, on 17th April 2021 to toll the tenor bell for a period prior to the funeral service in Windsor of Prince Philip, Duke of Edinburgh. This was in response to a request to all towers.

The extended time during which the bells were not able to be rung meant that it was necessary for Taylor's Bell Foundry to undertake a safety inspection prior to full ringing restarting. Taylor's have also subsequently undertaken a periodic service visit.

Since recommencing there have been two further short pauses in ringing – one caused by a very old wooden rope guide (on the 4th) breaking and needing to be replaced and the other caused by concern about a possible piece of masonry dislodging from the tower.

On 5th July the Parochial Church Council agreed and adopted an updated Constitution for the Bell Ringers. This included provisions to ensure that the Church's Safeguarding Policies for both Vulnerable Adults and Children and Young People are fully integrated into the Belfry activities. This was subsequently formally adopted by the Bell Ringers at their Annual General Meeting on 1st September 2021. The following Tower Officers were also appointed:

Tower Captain: Charles Poole
Secretary: Steve Mitchell
Treasurer: Graham Hall
Principal Trainer / Instructor: Harry Longman
Safeguarding Officer, Vulnerable Adults, Children & Young Persons: Lisa Cook
Steeple Keeper: Charles Poole

As often happens, membership of the Bell Ringing team has fluctuated over the year. We have been

delighted to welcome two people new to both the village and to ringing and both of whom are progressing very well. Young people learning ringing skills are also essential for the long-term future and we have been fortunate to have a number of such ringers. However, school and university studies deplete the team in term time and emphasise the need for further new ringers (or returners) – of all ages. To this end, an open afternoon event is planned for the spring, when the purely curious or keen to learn of any age between 9 and 90 can visit the belfry, see the bells and also have a supervised first pull on the ropes. It will also give an opportunity to climb the highest spiral stone staircase in the village – 34 steps to the ringing chamber with further steps up to the bells – and inspect the mechanism of the turret clock whose hands are on the outside of the tower. But if reading this sparks your interest, please do not wait!! Speak to any of the ringers and come and have a look, no commitment, but beware – you may well get hooked!!

All ringers are learners throughout their career as there is never an end to new skills and methods (many of which have most unusual names!). With our current band, we ring 'rounds' [1.2.3.4.5.6] and 'call changes' – varying the order of bells periodically. (As a team we are partial to 'Rounds/Queens' [1.3.5.2.4.6] call changes which give a lovely lilt to the ringing.) We frequently also ring 'Plain Hunt' on four or five bells. On a good day we also ring a touch of 'Bob Doubles' (on five with the tenor covering as the last bell) and an occasional 'Reverse Canterbury Doubles'.

Finally, two further thanks: firstly Steve Mitchell, often accompanied by Graham Hall, who wind the church clock by hand each week and also Ian Sanders who, although not a ringer, kindly scales the heights to the roof of the church tower to raise the Union flag or flag of St George as required.

Charles Poole

SAFEGUARDING

"God's call is to speak out on behalf of the voiceless, and for the rights of all who are vulnerable." Proverbs 31:8

Safeguarding within Rothley Parish Church is the responsibility of all. It is overseen by the two appointed Safeguarding Coordinators, Kate Croden (*Children and Young People*) and Wendy Ferguson (*Vulnerable Adults*). Lisa Cook continues as Administrator for DBS applications, ensuring they are completed and up to date.

Our [parish safeguarding policies](#) for child protection and vulnerable adults were reviewed and updated in November, in line with the model diocesan policies and GDPR guidance. These are available on the noticeboards and on the Rothley Parish Church website.

Training and safer recruitment remains a priority. Safeguarding training has been reorganised and has predominantly moved online. All safeguarding-related courses can be found on the Diocese of Leicester website [Safeguarding Training and Events page](#), with information about church roles and requirements for training. All PCC members,

and all those leading or involved in face-to-face work with groups (children, young people, and adult groups) should complete safeguarding training.

The Safeguarding Coordinators' priority plan for 2021 was signed off by the PCC. The key actions are:

- Ensure our new ways of worship (live streaming and online worship) are compliant with our safeguarding policies.
- Continue to adhere to safer recruitment guidance and GDPR procedures.
- Maintain a parish database for those working within the relevant groups, ensuring DBS and training is up to date.
- Maintain our parish dashboard.

We are committed to ensuring we are a welcoming church, offering a safe environment and protecting all those who worship and share with us. The Safeguarding Coordinators and DBS administrator are available to answer queries or respond to concerns.

Kate Croden and Wendy Ferguson

CHURCH BUILDING

During the year regular maintenance of the church building was carried out as usual. Unfortunately, the gas pipe from the boiler house into the church had to be replaced due to corrosion. As the churchyard is "closed", Charnwood Borough Council is required to keep the churchyard in good order. In 2021 they carried out work to the north boundary stone wall, checked all the headstones, making four of them safe and carried out work to four of the big lime trees. The PCC authorised our church

architect to apply to Charnwood for planning permission to remove the old boiler house. This work should be carried out in 2022. Most of the recommendations from the 2020 Quinquennial Inspection Report should also be completed next year. At the same time the two bottom sections of the church tower will be checked for any signs of loose pointing between the stones. If required, the pointing will be redone.

Ray Prince

THE OLD SCHOOL ROOMS



Old School Rooms: exterior, interior, Sunday School, external bookings calendar on church website

The year started with strict government regulations meaning that we should not be taking any bookings, but this gave the opportunity for more renovation work to be completed without any disruption to hall users.

First was the “pillar” by the passageway entrance door, where a crack had emerged. During the repair work, it was thought that this piece of brickwork had “never been tied to the rest of the building”.

The internal painting of the hall and office were completed, and eventually, after hold ups with wet weather, the external painting was completed, but the toilet area still needed some re-plastering work. Eventually, seven plasterers later and delays through lack of materials, it was completed in November and painted in early December. Meanwhile new flooring (carpet tiles and an area of durable floor) was laid in the hall and office, and a more hard-wearing “door mat” type carpet in part of the passageway. New chairs completed the project.

Bookings did not begin until July, but since then the hall has been very well used. Several of our own housegroups have used it as a temporary alternative to meeting in homes during the pandemic, as it was felt to be a safer environment where members could have extra space. There have been many enquiries and bookings – mostly by local families for family celebrations, but others from local organisations as well as corporate businesses for one-off meetings. A regular weekly pilates class and a choir workshop meet currently, and the Brownies continue to meet during term time, but other regular bookings have been declined due to our own groups using the hall on alternate weeks or once a month.

Leaders of church groups are reminded that they are responsible for booking the OSR if they require its use and special hiring rates are available for church members. Availability can be viewed on the [church website](#) under the menu *Contact, Old School Rooms*, and bookings can be made by contacting Linda Poole via email at linda.poole25@gmail.com.

Linda Poole

DEANERY AND DIOCESE

Discussions about new patterns of ministry, under the title *Shaped by God Together*, dominated the work of both Goscote Deanery Synod and Leicester Diocesan Synod in 2021. In October 2021, Diocesan Synod voted in favour of establishing 20 to 25 “Minster Communities” right across the *Diocese*. Essentially, this means a designated group of parishes, fresh expressions of church, and schools being brought together collectively for mission, resourced through the leadership of a diverse ministry team comprising clergy, licensed lay ministers and headteachers. The aim, following a small number of pilots in 2022, is to roll out the programme across the diocese by 2026. Rothley will ultimately become part of one such Minster Community, but we have no information, as yet, beyond that expectation.

The new pattern has obvious implications for Rothley, which currently is a one-church parish in its own right, with its own PCC and Vicar largely determining the direction of travel. There will be far more sharing with neighbouring parishes, fresh expressions and schools and there are likely to be exciting opportunities as well as challenges in such an organisational pattern. In the October 2021 Diocesan Synod debate *Bishop Martyn* promised that the legal rights of parishes remain “*absolutely central*” and that any changes “*will be done by agreement together*”. The pilots which are scheduled for 2022 will provide some valuable insights into how these Minster Communities are to be created and what role individual parishes and local schools will play in shaping the end product.

The unsustainable financial deficits of the Diocese in recent years have been a significant - but not the only - driver behind the changes, which will see around 20 less full-time stipendiary ministers operating across the diocese by 2026. Both Diocesan Synod and Goscote Deanery Synod have spent considerable time discussing possible ways forward in the light of the various challenges thrown up by the COVID-19 pandemic. It is quite possible that deanery synods as we currently know them will disappear once the *Shaped by God Together* strategy is fully implemented, but in the meantime our Vicar, Rob Gladstone, remains Area Dean of Goscote and the Deanery Synod (which includes four elected representatives from Rothley) plays an important role in sharing information and ideas and providing mutual support where appropriate.

There is, therefore, a significant organisational change agenda for all levels of Diocesan life and, while I don't want to underplay the significance of these changes, at the end of the day our faith is not in a particular organisational pattern or management structure, but in Jesus Christ, who is the same yesterday, today and for ever, and, while there are likely to be challenges associated with the new pattern, there will undoubtedly be exciting missional opportunities as we work more closely with neighbouring parishes to spread the good news of Jesus Christ further afield.

David Wilson

TRUSTEES' ANNUAL REPORT

1 JANUARY TO 31 DECEMBER 2021

OBJECTIVES AND ACTIVITIES

The purpose of Rothley Parochial Church Council (PCC), as set out in the Parochial Church Councils (Powers) Measure 1956 as amended, is to co-operate with the incumbent, Rev Canon Rob Gladstone, in promoting in the parish of Rothley the whole mission of the Church, pastoral, evangelistic, social and ecumenical.

Rothley Parish Church:

- offers Christian worship in the Anglican tradition
- maintains a village-wide pastoral care role
- supports the work of the village school through its governors and direct involvement
- maintains teaching and social activities for all age groups
- co-operates and works with other Christian denominations in the village for the benefit of the whole community

Rothley PCC is the guardian and maintainer of St Mary & St John Parish Church, a Grade II* listed building, actively promoting to the general public its significance and history through open events.

In planning and undertaking its work, Rothley PCC has taken account of the Charity Commission's guidance on public benefit.

ACHIEVEMENTS

2021 has, again, been a year dominated by the COVID-19 pandemic. The year began with the church, again, closed for Sunday services, a situation that continued until 23rd May as we responded to the local situation in Leicester and Leicestershire. However, our well-established online services and our communications and pastoral care systems ensured that Rothley Parish Church maintained its ministry in the parish throughout 2021.

After our return to the church building on 23rd May, we began to live stream one service each Sunday so those who did not attend in person could still access a Sunday service. This has continued for the rest of the year, along with online Morning Prayer four days a week. Similarly, our weekly communications and service sheet, sent or delivered to every church member, and our offers of help with shopping, prescriptions or lifts to medical appointments have all continued. This excellent team effort by a large number of people has ensured we have maintained contact with church members throughout the year and the support has been very much appreciated. We have been delighted to welcome church members back to the building in good numbers and look forward to the time when the prevailing situation will be such that everyone will feel able to return.

Since 23rd May we have experimented with different times and styles of church services in order to respond to the needs of our members and the wider parish.

Online assemblies were provided for the village school during the first two school terms until in person assemblies could be conducted from September. The Growing Families WhatsApp group has been a helpful forum for local families and they have taken every opportunity to organise lively, safe outdoor events during the year.

Many of our Sunday School, youth and adult groups in the church were able to maintain contact and activities online or by email during the first half of the year. From September, all groups were very happy to be able, at last, to meet again in person, including some that had not met since March 2020. Some of our groups have also taken the opportunity to make changes to their activities or times of meeting to better serve their members.

Our partnership with the Baptist Church in the Soar Valley Community Food Project has been increasingly important over the last year as demand for its support continues to grow, not only in Rothley, but throughout the Soar Valley area. Church members generously gave food, funds and volunteer time to this ministry throughout the year.

One highlight of the year was a concert in October to celebrate the centenary of the church organ, which was built in 1921 as a memorial to those from the village who died in the Great War, 1914 to 1918. This was a moving event for all who attended, including families of some of the fallen.

The requirements of Health and Safety legislation are embedded in the Church's procedures and budget for both the church building and the Old School Rooms. Health and Safety is a standing item on PCC agendas. However, these have effectively been overridden since March 2020 by the detailed COVID-19 regulations on the use of church buildings.

The ten-year Management and Maintenance Plan for the church and Old School Rooms is updated annually. Each year we apply to the government's Listed Places of Worship Grant Scheme in order to recoup all allowable VAT costs on repairs to the church building. During 2021 the final stages of a major refurbishment of the Old School Rooms were completed, involving internal and external painting, new carpet and new chairs. A laptop and computer software were purchased to enable live streaming of church services when the building reopened in May and two further screens in the chancel area of the church were added to the audio-visual system. All these major purchases were made from the legacy left by late church member Pat Foulds.

Safeguarding of children and vulnerable adults is given appropriate priority and is a standing item on PCC agendas.

An indication of the scale and importance of the contribution made by volunteers to the work of Rothley Parish Church is evident in the narrative reports of church activities which form the first part of this Annual Report. Their continued commitment during another difficult year beset by restrictions has been exceptional, as has that of our employees.

FINANCIAL REVIEW

The continued financial commitment of our congregation, as well as healthy accumulated reserves, have seen us end 2021 with a surplus, despite the fact that the church was not open for Sunday services for almost five months. An increase in income during the last months of the year saw it end 2% above budget for the year, while expenditure was 4% under budget.

Rothley Parish Church's principal source of funding for its general expenditure is the regular donations of its congregation, together with the related recovery of tax through Gift Aid and the additional relief available on cash donations through the Gift Aid Small Donations Scheme (GASDS).

The most significant regular expenditure is the Parish Contribution to the Diocese of Leicester (£96,430 in 2021), which supports ministry across the Diocese as well as providing funds to pay for clergy housing, stipends and pensions. The Parish Contribution is considered to be a gift offered by the parish and the amount must be decided by the PCC annually.

A further £10,736 of the large legacy received in 2019 was been allocated to projects in the church and Old School Rooms during 2021; £198,233 remains to be allocated. COVID-19 has slowed down the progress on other projects, which may need to be reassessed to ensure they are still appropriate. Our policy is to use legacies for specific projects, rather than to cover general expenditure. In accordance with correct procedure, the balance of the legacy is held in the General Fund until such time as the PCC designates its use.

Having six people working together as a treasury team provides the capacity to monitor budgets and contracts, and control expenditure, as well as providing good internal controls in our financial procedures.

We continue to base the remuneration of our regular part-time employees on the Living Wage Foundation's Voluntary Real Living Wage, which is considerably higher than the government's National Living Wage and is independently calculated each year to ensure it keeps pace with any increase in the cost of living.

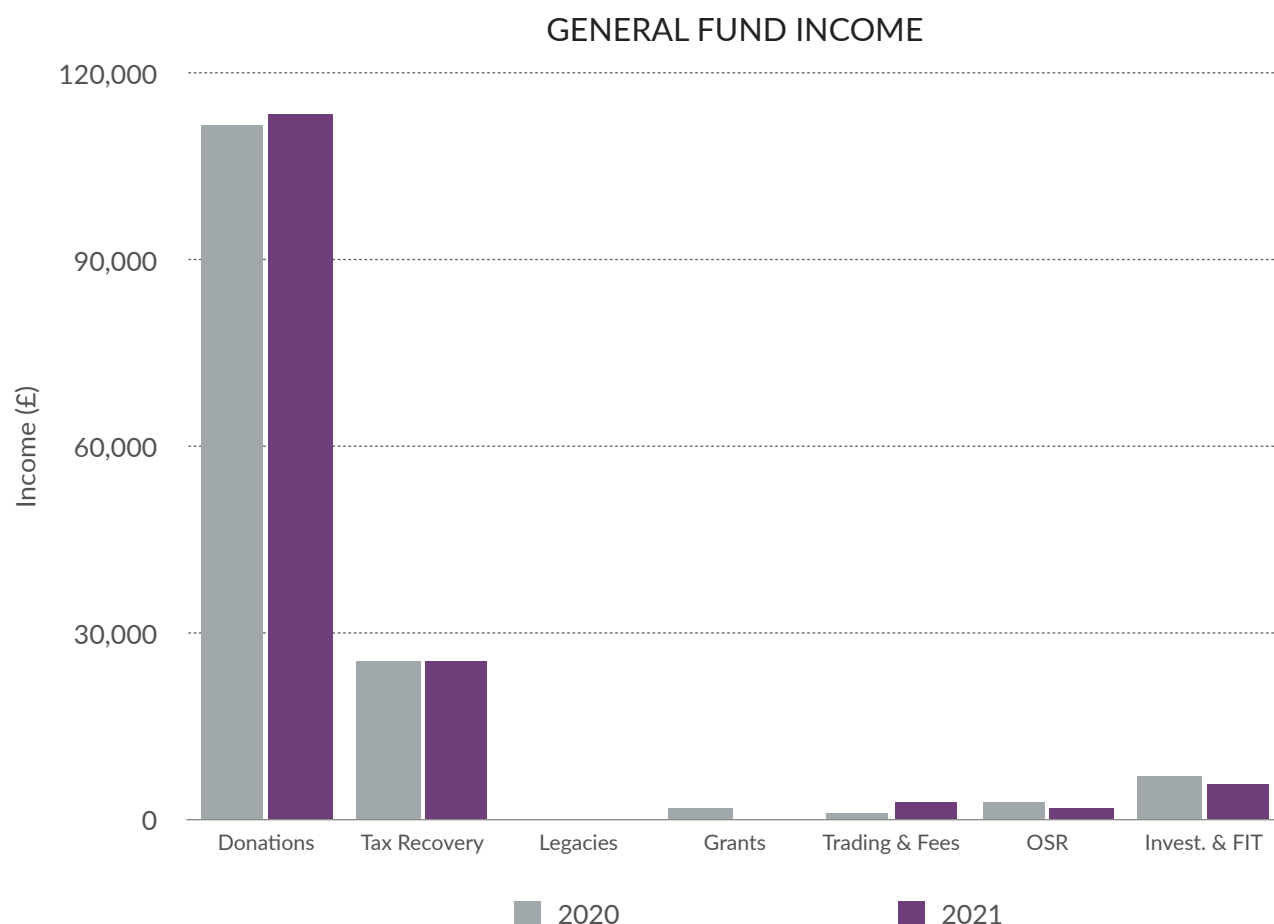
FUND OVERVIEW

Rothley Parish Church held a balance of £319,136 at 31 December 2021, made up as follows:

Fund Overview	31/12/2021 £	31/12/2020 £
Unrestricted Funds		
General Fund	271,705	280,590
(Unrestricted) Designated Funds		
Church Building Improvements Fund	5,161	5,144
Church Maintenance Fund	7,843	10,724
Heritage Events Fund	878	1,087
Old School Rooms Maintenance Fund	68	9,784
Organ & Music Fund	14,948	14,583
Wednesday Club	138	138
Total Unrestricted Funds	300,741	322,050
Restricted Funds		
Children & Families Restricted Fund	10,661	9,488
Church Building Improvements Restricted Fund	2,185	2,178
Goscote Deanery Fund	925	922
Youth Fund	4,624	4,689
Total Restricted Funds	18,395	17,277
Total funds	319,136	339,327

GENERAL FUND

General Fund	2021 £	2020 £
Income:		
Donations	113,594	111,625
Tax recovery	25,398	25,384
Legacies	-	191
Grants	293	1,726
Trading & fees	2,926	1,254
Old School Rooms	1,869	2,597
Investments & Feed-in Tariff	5,701	7,039
Total Income	149,781	149,816
Expenditure		
Tithe & other awards	13,899	14,451
Parish Contribution	96,430	96,430
Staff salaries/payments	14,018	13,643
Clergy & staff expenses	908	1,718
Mission & evangelism	103	557
Church costs	14,847	13,941
Church utilities	1,511	1,324
Old School Rooms	5,743	5,142
Governance	480	480
Total expenditure	147,939	147,686
Surplus/deficit of income	1,842	2,130
Net transfers to/from other funds	(10,727)	(47,280)
Balance brought forward at 1 January	280,590	325,741
Balance at 31 December	271,705	280,591



During 2021, a further £10,736 from the legacy from Pat Foulds was allocated for further items of audio-visual equipment and completion of the refurbishment of the Old School Rooms, leaving a balance of £198,233 to be allocated to church projects, in line with our Legacy Policy. Overall, General Fund income for 2021 was 2% above budget and expenditure was 4% below, resulting in a surplus of £1,842 at the end of the year.

GENERAL FUND BUDGET FOR 2022

The PCC has set a worst-case scenario budget, with income slightly below the 2021 budget and £4,578 below the actual 2021 result, and with expenditure similar to the 2021 budget and £6,673 higher than 2021's actual spend. Nationally, inflation is rising so a more difficult year is anticipated in 2022. A better-than-expected result for income could be offset by rising costs.

General Fund Budget for 2022		£
Income		
Donations		111,504
Tax recovery		25,966
Trading & fees		448
Old School Rooms		1,500
Investments & Feed-in Tariff		5,786
Total Income		145,204
Expenditure		
Tithe & other awards		13,747
Parish contribution		96,430
Staff salaries / payments		15,124
Clergy & staff expenses		1,745
Mission & evangelism		1,450
Church costs		16,443
Church utilities		2,350
Old School Rooms		6,819
Governance		505
Total Expenditure		154,613
Budgeted surplus / (deficit)		(9,409)

- Church members' donations were 1% over budget by the end of 2021 and we are very grateful for their commitment. However, for most of the year donations income ran under budget, so the 2022 estimate is cautious.
- A modest budget has been included for trading and fees as we have few weddings booked for 2022. Weddings and funerals have been subject to severe restrictions during most of the pandemic.
- Old School Rooms income was hit by the early lockdown in 2021 so a very cautious budget has been set for 2022.
- Tithe gifts for mission depend on income received as they are fixed at 10% of the income from general donations, Gift Aid tax recovered and additional relief from the Gift Aid Small Donations Scheme.

RESERVES POLICY

The PCC's Reserves Policy (reviewed in March each year) requires the holding of unrestricted reserves equal to three months' general running costs and an additional three months' salary costs. Any surplus reserves are to be committed to planned expenditure in line with long-term strategy. In 2022 the amount required in the General Fund is £52,793, which includes £9,409 to cover the budgeted year end deficit. At 31 December 2021 the PCC held £73,472 in the unrestricted General Fund (discounting the legacy) and a further £29,036 in designated funds, whose designation could be changed by the PCC if it became necessary, and therefore our General Fund reserves are in line with our policy.

INVESTMENTS

The PCC has opted for a no-risk strategy. The Church holds a 60-day notice account and four 12-month fixed rate saver accounts, one maturing each quarter, with Shawbrook Bank, which runs the accounts on behalf of CAF Bank. The PCC restricts its investment with Shawbrook Bank to £85,000 in order to be covered by the Financial Services Compensation Scheme. Our remaining reserve funds are held in the Central Board of Finance Church of England Deposit Fund, which is not covered by the Financial Services Compensation Scheme, but has a good credit rating.

FUTURE PLANS

The COVID-19 pandemic has continued to halt, slow or change different aspects of our activity during 2021. However, our church leaders and congregation have proved themselves to be adaptable and resilient throughout.

Plans to improve the church building were halted in March 2020, waiting for the time when a consultation on the plans drawn up by our architect can be held with the congregation. This is the necessary next step before formal approval can be sought. After such a long delay, we will need to reassess our plans to ensure they are still appropriate.

The principal risks and uncertainties facing the Church, as identified by the PCC, are split into four areas:

- operational
- regulatory
- governance
- financial

Operational risks of Health and Safety, employment and Safeguarding are identified and managed by named individuals or sub-committees who report as necessary to the PCC. Many additional Health and Safety requirements have been necessary during the pandemic.

Through Diocesan resources the PCC is updated on regulatory and governance requirements, which are then assessed and actioned accordingly.

The PCC recognises that the main financial risks and uncertainties arise from the need to maintain the church fabric and organ, while also investing in the future life of the Church in order to address

our priorities. However, the generous legacy received in 2019 and healthy accumulated reserves continue to be a very useful resource.

Day-to-day risks and uncertainties are managed through the Finance Committee who handle the Church's finances, regularly reporting to the PCC and providing advice as appropriate.

STRUCTURE, GOVERNANCE AND MANAGEMENT

Rothley PCC is governed by two pieces of Church of England legislation, called Measures:

- Parochial Church Councils (Powers) Measure 1956 as amended
- Church Representation Rules (contained in Schedule 3 to the Synodical Government Measure 1969 as amended)

The PCC is a corporate body with charitable status. It comprises both those elected by members of the Church Electoral Roll and others who sit on the PCC by virtue of a particular office they hold within the Church. The PCC meets six times a year.

The PCC includes a mixture of sub-committees and working groups of the PCC, both of which also draw in other members of the congregation, covering different aspects of the Church's work. At least one member of the PCC usually sits on each sub-committee and reports to the PCC. The sub-committees are:

- Business (which sets the agenda for PCC meetings)
- Finance
- Operations

The working groups are:

- Discipleship
- Send
- Communications
- Church Building Improvements

Each year, soon after new members are elected to the PCC at the Annual Parochial Church Meeting, an induction evening is held to help new trustees understand their role. All PCC members are expected to attend. Useful written resources are given to trustees as background support to their role.

The PCC is responsible for making decisions on all matters of general concern and importance to the parish, including deciding how funds are spent.

ADMINISTRATIVE DETAILS

Name of charity: The Parochial Church Council of the Ecclesiastical Parish of St Mary & St John, Rothley

Registered working name: Rothley Parish Church

Charity number: 1133832

Address: 3 School Street
Rothley
Leicester
LE7 7RA

Trustees:

Rob Gladstone	Vicar (Chair) [ex-officio]
Margaret Rouse (from 30/5/21)	Churchwarden [ex-officio]
Fred Sleath (from 30/5/21)	Churchwarden [ex-officio]
Wendy Ferguson	Also Deanery Synod representative
Linda Poole	Also Deanery Synod representative
Ray Prince	Also Deanery Synod representative
David Wilson	Also Deanery Synod representative
Liz Barker	
Chris Garnett (from 18/4/21)	
Alison Godfrey	
David Hodgson (from 18/4/21)	
Margaret Leverment (from 18/4/21)	
Wendy Lewis	
Alison Parkinson	
Susan Pinkus	
Jennifer Pilbeam (co-opted)	
Jonathan Pilbeam	
Susan Wilson	

The following served as trustees during part of 2021 only:

Mike Ferguson (to 18/4/21)
Clive Jackson (to 18/4/21)
Angela Neill (to 18/4/21)
Ros Taylor (to 18/4/21)

Bankers:

NatWest
1 Granby Street
Leicester
LE1 6EJ

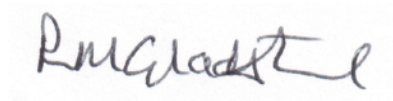
CAF Bank Ltd
25 Kings Hill Avenue
Kings Hill
West Malling
Kent
ME19 4JQ

Independent Examiner:

Scott Bradford BSc ACA
Newby Castleman, Chartered Accountants
6 Forest Road
Loughborough
LE11 3NP

The Trustees' Annual Report was approved by Rothley Parochial Church Council on 7th March 2022.

Signed on its behalf:

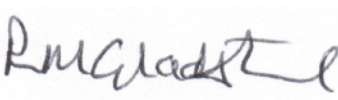
A handwritten signature in dark ink, appearing to read 'RM Gladstone', is written over a light blue rectangular background.

ACCOUNTS FOR THE YEAR ENDED 31 DECEMBER 2021

Balance Sheet at 31 December 2021	31/12/2021 £	31/12/2020 £
Current assets:		
Debtors (Note 10)	2,513	2,342
Cash at bank and in hand	328,504	351,847
Total	331,017	354,189
Liabilities:		
Creditors: amounts falling due within one year (Note 11)	11,881	14,862
Net assets:	319,136	339,327
Located:		
Unrestricted Funds		
General Fund	271,705	280,590
(Unrestricted) Designated Funds		
Church Building Improvements Fund	5,161	5,144
Church Maintenance Fund	7,843	10,724
Heritage Events Fund (formerly Quarter Days Heritage Events)	878	1,087
Old School Rooms Maintenance Fund	68	9,784
Organ & Music Fund	14,948	14,583
Wednesday Club	138	138
Total Unrestricted Funds	300,741	322,050
Restricted Funds		
Children & Families Restricted Fund	10,661	9,488
Church Building Improvements Fund	2,185	2,178
Goscote Deanery Fund	925	922
Youth Fund	4,624	4,689
Total Restricted Funds	18,395	17,277
Total Funds	319,136	339,327

The accounts were approved by Rothley Parochial Church Council on 7th March 2022.

Signed on its behalf:



Statement of Financial Activities 1 January to 31 December 2021	Unrestricted Funds General Fund £	Unrestricted Designated Funds £	Restricted Funds £	Totals 2021 £	Totals 2020 £
Income:					
Donations	113,594	-	1,320	114,914	113,065
Tax recovery	25,398	-	330	25,728	25,744
Legacies	-	-	-	-	191
Grants	293	37	-	330	3,076
Fundraising events	-	-	-	-	350
Trading & fees	2,926	688	180	3,794	1,336
Old School Rooms	1,869	-	-	1,869	2,597
Investments & Feed-in Tariff	5,701	132	57	5,890	7,401
Total Income	149,781	857	1,887	152,525	153,760
Expenditure					
Tithe & other awards	13,899	-	-	13,899	14,451
Parish Contribution	96,430	-	-	96,430	96,430
Staff salaries/payments	14,018	-	-	14,018	13,643
Clergy & staff expenses	908	119	-	1,027	1,718
Mission & evangelism	103	213	759	1,075	1,549
Church costs	14,847	7,541	-	22,388	47,902
Church utilities	1,511	-	-	1,511	1,324
Old School Rooms	5,743	16,144	-	21,887	16,987
Governance	480	-	-	480	480
Total expenditure	147,939	24,017	759	172,715	194,484
Surplus/deficit of income	1,842	(23,160)	1,128	(20,190)	(40,724)
Transfers between funds (details below)	(10,727)	10,736	(9)	-	-
Balance brought forward at 1 January	280,590	41,460	17,276	339,326	380,051
Balance at 31 December	271,705	29,036	18,395	319,136	339,327

Transfer between funds 1 January to 31 December 2021	Unrestricted Funds	Unrestricted Designated Funds			Restricted Funds
	General Fund	Church Building Improvements	Church Maintenance	OSR Maintenance	Children & Families
	£	£	£	£	£
Transfer from General Fund (Legacy) to CBI Designated Fund as per PCC resolution 25/1/21	(1,001)	1,001			
Transfer from General Fund (Legacy) to OSR Maintenance Fund per PCC resolution 10/5/21	(6,000)			6,000	
Transfer from General Fund (Legacy) to CBI Designated Fund per PCC resolution 10/5/21	(1,740)	1,740			
Transfer from Church Maintenance Fund to OSR Maintenance Fund for chairs			(180)	180	
Transfer from General Fund (Legacy) to CBI Designated Fund per PCC resolution 27/1/20	(1,778)	1,778			
Transfer from Children & Families Restricted Fund to General Fund (glue sticks)	5				(5)
Transfer from General Fund (Legacy) to OSR Maintenance Fund for refurbishment as agreed by Business Committee 12/1/22	(216)			216	
Transfer to correct posting error 31/12/21	4				(4)
TOTAL	(10,726)	4,519	(180)	6,396	(9)

Location of funds	£		£
NatWest Stewardship Account	8,875	Debtors*:	2,513
CAF Bank General Account & cash	29,242	Creditors*:	11,881
OSR bank	-		
CBF Deposit Fund	204,314		
CAF 60 Day Notice Savings Account	10,404		
CAF 12 Month Fixed Rate Saver Account	18,930		
CAF 12 Month Fixed Rate Saver A/c 2	19,063		
CAF 12 Month Fixed Rate Saver A/c 3	18,884		
CAF 12 Month Fixed Rate Saver A/c 4	18,793		
Net creditors	(9,368)		
Total	319,137		

*For details of Debtors and Creditors see pages 43 and 44.

NOTES TO THE ACCOUNTS FOR THE YEAR 1 JANUARY TO 31 DECEMBER 2021

1. Accounting Policies

BASIS OF PREPARATION

The accrual accounting method has been used and the financial statements have been prepared under the Church Accounting Regulations 2006 and in accordance with Charities SORP (FRS 102). Rothley Parish Church is a public benefit entity, as defined by FRS 102. The trustees consider that there are no material uncertainties about the charity's ability to continue as an ongoing concern.

FUND ACCOUNTING

Rothley Parish Church holds both unrestricted and restricted income funds:

- The **General Fund** is unrestricted and may be used for any of the Church's charitable aims.

Some **unrestricted funds have been designated by the Trustees for certain purposes:**

- **Church Building Improvements Fund:** for costs incurred in exploring the possibility of improving the inside of the church building
- **Church Maintenance Fund:** for non-routine maintenance of the church building and contents
- **Heritage Events Fund:** to fulfil our 10-year commitment to the Heritage Lottery Fund to promote the heritage of the church building
- **Old School Rooms Maintenance Fund:** for non-routine maintenance of the Old School Rooms and its contents
- **Organ & Music Fund:** part allocation of PCC fees from each wedding designated for use by the Organist and Music Leader, particularly to maintain the organ
- **Wednesday Club:** donations from Club meetings to be used by the Wednesday Club

These funds are classified as **unrestricted because the Trustees are able to change their designation if thought necessary.**

Some funds are restricted because their use is limited by the intentions of the donors:

- **Children & Families Restricted Fund:** donations and grant income specifically for ministry among children and families in the parish
- **Church Building Improvements Fund:** for specific donations for the Church Building Improvements project
- **Goscote Deanery Fund:** funds under the control of Goscote Deanery Synod and required to be held under the care of the Area Dean's Church
- **Youth Fund:** donations and grant income for ministry among youth in the parish

INCOME

- Income from church collections, donations and legacies is recognised when received into our bank account.
- Tax recoverable on Gift Aid is recognised when the relevant income is received into our bank account.
- Additional relief under the Gift Aid Small Donations Scheme (GASDS) is recognised when the relevant income is received into our bank account.
- Income from grants is generally recognised when received.
- Bank interest is recognised when received.
- Income from rental of the church field is recognised when the rental is due.
- Income earned from the solar panels on the church roof through the Feed-in Tariff programme is recognised during the period in which it is due.

VOLUNTEERS

Rothley Parish Church acknowledges the vital role of its many unpaid general volunteers in carrying out its charitable activities. Members of the congregation assist in ministry, administration and practical tasks.

EXPENDITURE

- The Parish Contribution to the Diocese of Leicester is accounted for as a cost.
- Tithe donations for mission, calculated at one-tenth of the Church's income from donations, Gift Aid tax recovered and GASDS relief, are accounted for when they become due.

FIXED ASSETS

- Rothley Parish Church has complete maintenance responsibility for its church building and church hall, as well as lesser responsibility for its churchyard and vicarage. However, consecrated land and buildings, and benefice property are excluded from the accounts by Section 10(2) (a) and (c) of the Charities Act 2011 and the costs of their maintenance or improvement are shown as expenditure in the accounts.
- All other fixtures, fittings and equipment are written off as expenditure at the time of purchase.

DEBTORS

The debtors shown on the Statement of Financial Activities for 2021 comprised:

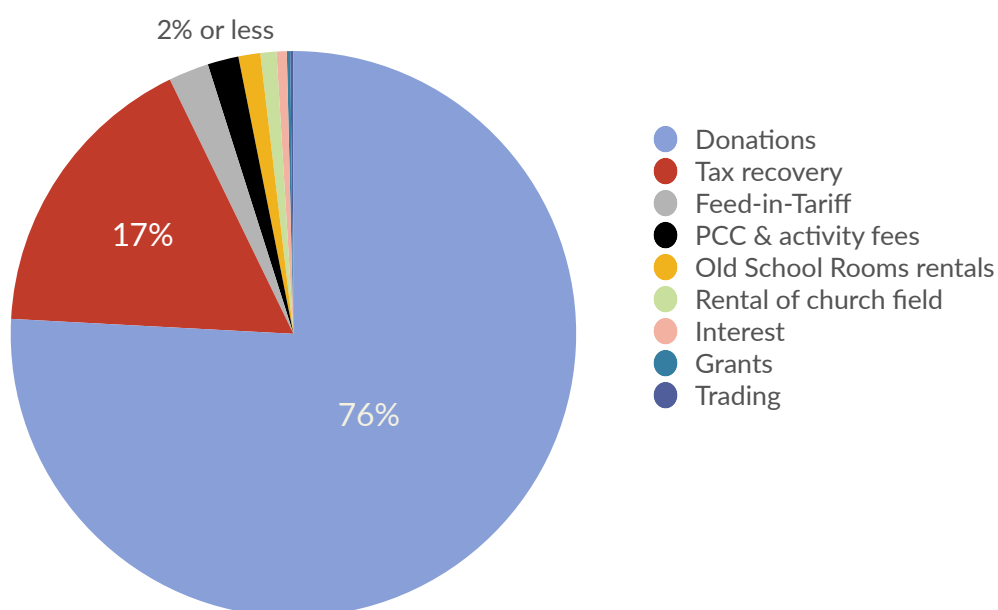
- Gift Aid tax recoverable and GASDS receipts due on donations received in December 2021
- Late payments for hire of the Old School Rooms
- Coffee money from 2021

CREDITORS

The creditors shown on the Statement of Financial Activities for 2021 comprised payments relating to 2021 but invoiced or paid shortly after the end of the year, as well as the balance of our tithe gifts for mission, the exact amount of which cannot be finalised until all donations, tax recoverable through Gift Aid and relief obtained through GASDS, are established.

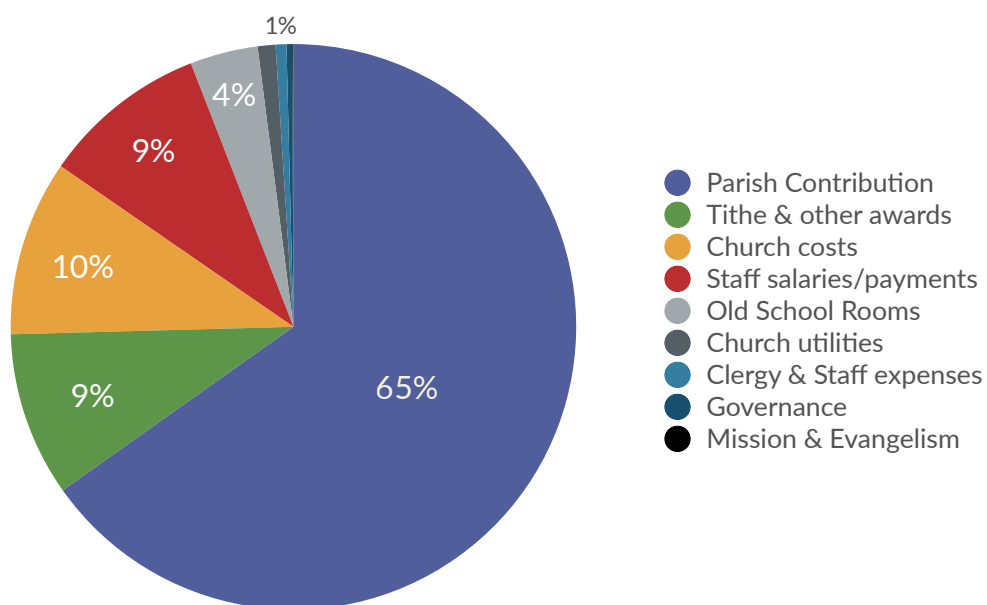
2. Analysis of Income

Income	General Fund £	Designated Funds £	Restricted Funds £	Total 2021 £	Total 2020 £
Donations	113,594	-	1,320	114,914	113,065
Tax recovery	25,398	-	330	25,728	25,744
Legacies	-	-	-	-	191
Grants	293	37	-	330	3,076
Fundraising events	-	-	-	-	350
PCC & activity fees	2,657	688	180	3,525	956
Trading: hospitality, copying, use of equipment/space	269	-	-	269	380
Old School Rooms rentals	1,869	-	-	1,869	2,597
Interest	871	132	57	1,060	1,479
Rental of church field	1,380	-	-	1,380	1,380
Feed-in Tariff	3,449	-	-	3,449	3,834
Total	149,780	857	1,887	152,524	153,052



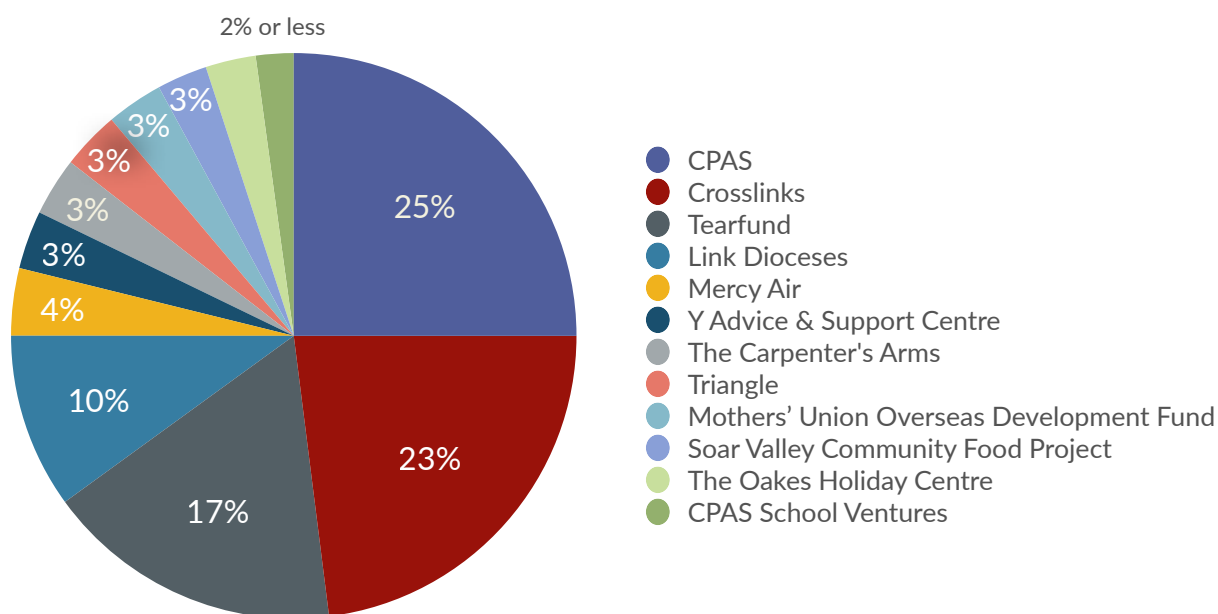
3. Analysis of Expenditure

Expenditure	General Fund £	Designated Funds £	Restricted Funds £	Total 2021 £	Total 2020 £
Tithe & other awards	13,899	-	-	13,899	14,451
Parish Contribution	96,430	-	-	96,430	96,430
Staff salaries/payments	14,018	-	-	14,018	13,643
Clergy & staff expenses	908	119	-	1,027	1,718
Mission & evangelism	103	213	759	1,075	1,549
Church costs	14,847	7,541	-	22,388	47,902
Church utilities	1,511	-	-	1,511	1,324
Old School Rooms	5,743	16,144	-	21,887	16,987
Governance	480	-	-	480	480
Total	147,939	24,017	759	172,715	194,484



4. Tithe gifts for mission 2021

Tithe gifts for mission	£
Church Pastoral Aid Society (mission in UK & Ireland)	3,475
Crosslinks (international mission)	3,197
Tearfund (international relief & development)	2,363
Link Dioceses of Mount Kilimanjaro & Kiteto, Tanzania	1,390
Mercy Air (aviation for humanitarian aid & mission)	535
Y Advice & Support Centre, Leicester (homeless support)	463
The Carpenter's Arms, Loughborough (drug & alcohol rehabilitation)	463
Triangle (Christian outreach to homeless people in Leicester)	463
Mothers' Union Overseas Development Fund (in provinces & dioceses of the Anglican Communion)	450
Soar Valley Community Food Project, Rothley	400
The Oakes Holiday Centre, Sheffield (Christian holidays for children & teenagers)	400
Church Pastoral Aid Society School Ventures (Christian holidays for children)	300
Total	13,899



5. Trustees' remuneration & benefits

Three trustees received remuneration during 2021 from employment by Rothley Parish Church as follows:

- David Hodgson, Organist fees for three funerals: £300
- Ray Prince, Sound Operator fees for six funerals and two weddings: £240
- Fried Sleath, Sound Operator fees for one funeral and one wedding: £60

6. Trustees' expenses

No expenses have been incurred by trustees during 2021 in respect of their role as trustees.

7. Related party transactions

The only related party transactions during 2021 are those listed under note 5.

8. Independent examination fees

The fee payable to the Independent Examiner for his work on these accounts is £480. This amount has been accrued as a creditor.

9. Employees

Rothley Parish Church employed the following staff during 2021:

- Part-time Administrator
- Part-time Premises Officer for the Old School Rooms
- Part-time Church Cleaner
- 4 casual employees as organist, vergers and sound operators for funerals and weddings

No employees received payments of over £60,000.

10. Debtors

Debtors	31/12/2021 £	31/12/2020 £
Accrued Income	372	-
Gift Aid & GASDS	2,141	2,056
Feed-in Tariff	-	286
Total	2,513	2,342

11. Creditors

Amounts falling due within one year:

Creditors	31/12/2021 £	31/12/2020 £
Balance of tithe	9,399	9,201
Accruals	1,582	2,180
PAYE Creditor	171	139
Agency collections	729	3,342
Total	11,881	14,862

12. Old School Rooms

Old School Rooms	2021 £	2020 £
Rental income	1,869	2,597
Expenditure:		
Utilities	924	976
Cleaning	2,964	2,678
Maintenance	1,791	1,369
Consumables & other costs	65	118
Total	5,744	5,141
Operating surplus / (deficit)	(3,875)	(2,544)

In addition to the routine maintenance costs of £1,791, a further £1,205 from accumulated reserves, was spent on removing redundant emergency lighting and repairing a brick pier at the doorway; £14,939, from the legacy and a donation, was spent on the following refurbishment work:

- Internal and external painting
- New carpet
- New chairs
- Notice boards, clocks, radiator covers
- Washing and relaying patio

Rental income was, again, affected by COVID-19 restrictions during the first half of the year, so we were able to take advantage of this to complete the refurbishment during the summer months. From September, use of the hall by church groups and outside hirers restarted.

13. Old School Rooms Maintenance Fund

Old School Rooms Maintenance Fund	2021 £	2020 £
Income:		
Bank Interest	31	78
Total income:	31	78
Expenditure:		
Non-routine repairs	1,205	11,770
Refurbishment	14,939	-
Equipment	-	75
Office computer upgrade	-	87
Total expenditure	16,144	11,932
Surplus/(Deficit)	(16,113)	(11,854)
Transfer from General Fund (Legacy)	6,216	20,000
Transfer from General Fund (Old chairs for use in church)	180	313
Balance brought forward at 1 January	9,785	1,326
Balance at 31 December	68	9,785

At its meeting on 10th May 2021, the PCC agreed to allocate a further £6,000 from the legacy to the Old School Rooms Maintenance Fund to complete the refurbishment of the hall and yard (see Note 12). 36 chairs were moved to the church building for use when needed and a nominal amount of £5 per chair was transferred from the General Fund. The Business Committee of the PCC agreed on 12th January 2022, but to be effective on 31st December 2021, to allocate an additional £216 from the legacy to cover a small overspend on the original round-figure estimate for the refurbishment. The project has ensured the hall remains in a good state of presentation and repair.

14. Church Building Improvements Fund

Church Building Improvements Fund	2021 £	2020 £
Income:		
Bank interest	16	38
Total income:	16	38
Expenditure:		
Audio-visual equipment	4,520	21,504
Architect's fees	-	690
Total expenditure	4,520	22,194
Surplus/(Deficit)	(4,504)	(22,156)
Transfer from General Fund (Legacy)	4,520	22,303
Balance brought forward at 1 January	5,142	4,995
Balance at 31 December	5,158	5,142

Further purchases, totalling £4,520, were made from the legacy to cover additional items required for the audio-visual system:

- Laptop and basic software
- Software for live streaming services
- Two screens for the chancel
- A stool for the vision operator

15. Church Maintenance Fund

Church Maintenance Fund	2021 £	2020 £
Income:		
Listed Places of Worship Grant Scheme	-	1,038
Bank interest	34	60
Total income:	34	1,098
Expenditure:		
Non-routine repairs	2,734	11,328
Total expenditure	2,734	11,328
Surplus/(Deficit)	(2,700)	(10,230)
Transfer to OSR Maintenance Fund (Old chairs for use in church)	(180)	-
Transfer from General Fund (Legacy)	-	4,665
Balance brought forward at 1 January	10,724	16,289
Balance at 31 December	7,844	10,724

£2,734 was spent on small tables for the church and the replacement of a corroded gas pipe running from the meter through the wall to the supply inside the building. £180 was transferred to the OSR Maintenance Fund as a token payment for 36 chairs to be used in the church when needed.

16. Heritage Events Fund

Heritage Events Fund	2021 £	2020 £
Income:		
Bank interest	3	6
Total income:	3	6
Expenditure:		
Organ Centenary Concert	213	-
Total expenditure	213	-
Surplus/(Deficit)	(210)	6
Balance brought forward at 1 January	1,087	1,081
Balance at 31 December	877	1,087

A concert was held in church to mark the centenary of the church organ, built in 1921 as a memorial to those from the village who died in the Great War, 1914 to 1918.

17. Organ & Music Fund

Organ & Music Fund	2021 £	2020 £
Income:		
Grants	37	312
Fundraising events by Handbell Ringers	-	350
PCC wedding fees	688	-
Bank interest	47	82
Total income:	772	744
Expenditure:		
Church costs	287	243
Equipment	119	-
Total expenditure	406	243
Surplus/(Deficit)	366	501
Balance brought forward at 1 January	14,581	14,080
Balance at 31 December	14,947	14,581

18. Children & Families Restricted Fund

Children & Families Restricted Fund	2021 £	2020 £
Income:		
Donations	1,320	1,440
Gift Aid tax recovered	330	360
Activity fees	180	-
Bank interest	32	51
Total income:	1,862	1,851
Expenditure:		
Mission & evangelism	679	794
Total expenditure	679	794
Surplus / (deficit)	1,183	1,057
Transfers to General Fund (glue sticks & posting error)	(9)	
Balance brought forward at 1 January	9,487	8,430
Balance at 31 December	10,661	9,487

19. Legacy received from the late Pat Foulds

Legacy received from the late Pat Foulds	£
Received:	
Main payment received 18/6/19	255,745
Final payment received 13/7/20	191
Total received:	255,936
Allocated:	
OSR refurbishment (2020)	20,000
Audi-visual improvements (2020)	22,303
Dimmer switches on church lighting (2020)	4,665
Audio visual improvements (2021)	4,520
OSR refurbishment (2021)	6,216
Total expenditure	57,704
Balance remaining to be allocated at 31/12/21	198,232

During 2021 we have used a further £10,736 to complete the audio-visual improvements and the Old School Rooms refurbishment. A large building project in the church has been delayed by the COVID-19 restrictions, but it is hoped that this can be progressed during 2022.

20. Additional small Fund held by the Diocese of Leicester

Chancel Repair Fund

The value of the Fund at 31 December 2021 was £263 (£261 at 31 December 2020). This Fund cannot be closed.

INDEPENDENT EXAMINER'S REPORT

to The Parochial Church Council of the Ecclesiastical Parish of St Mary & St John, Rothley

I report on the accounts of the charity for the year ended 31 December 2021 that are set out on pages 34 to 50.

RESPECTIVE RESPONSIBILITIES OF TRUSTEES AND EXAMINER

The charity's trustees are responsible for the preparation of the accounts. The charity's trustees consider that an audit is not required for this year under section 144(2) of the Charities Act 2011 ("the Charities Act") and that an independent examination is needed.

It is my responsibility to:

- examine the accounts under section 145 of the Charities Act;
- follow the procedures laid down in the general Directions given by the Charity Commission under section 145(5)(b) of the Charities Act; and
- state whether particular matters have come to my attention.

BASIS OF INDEPENDENT EXAMINER'S STATEMENT

My examination was carried out in accordance with the general Directions given by the Charity Commission. An examination includes a review of the accounting records kept by the charity and a comparison of the accounts presented with those records. It also includes consideration of any unusual items or disclosures in the accounts, and seeking explanations from you as trustees concerning any such matters. The procedures undertaken do not provide all the evidence that would be required in an audit and consequently no opinion is given as to whether the accounts present a 'true and fair view' and the report is limited to those matters set out in the statement below.

INDEPENDENT EXAMINER'S STATEMENT

In connection with my examination, no matter has come to my attention:

1. which gives me reasonable cause to believe that, in any material respect, the requirements:

- to keep accounting records in accordance with section 130 of the Charities Act; and
- to prepare accounts which accord with the accounting records and comply with the accounting requirements of the Charities Act

have not been met; or

2. to which, in my opinion, attention should be drawn in order to enable a proper understanding of the accounts to be reached.



22nd March 2022

Scott Bradford BSc ACA
Newby Castleman, Chartered Accountants
6 Forest Road
Loughborough
LE11 3NP



www.rothleychurch.org.uk | 0116 230 2626 | welcome@rothleychurch.org.uk