

Registered Charity No: 1133490



## **ANNUAL REPORT for the year ended March 31<sup>st</sup> 2023**

### **1. Reference and Administrative Details**

- Tanzania (UK) Trust
  - Registration number 1133490
  - Address: 6a Carrhouse Lane, Hollingworth, Hyde, Cheshire SK14 8NA
  - Our present Trustees are:
    - Ruth Chorley (chairperson)
    - Chris Neilson
    - Alan Smith
    - Jim Solomon
- Elizabeth Benstead is our Treasurer.

### **2. Structure, Governance and Management**

- Registered Charity 08/01/2010
- Tanzania (UK) Trust is a registered charity, number 1133490, and is constituted under a trust deed (Declaration of Trust) dated 9<sup>th</sup> November 2009.
- Recruitment and appointment of Trustees: potential trustees offer their skills, knowledge and experience to the Trust and these are assessed by the current Trustees before acceptance. The Declaration of Trust and copy of the latest Tanzania (UK) Trust report and Statement of Accounts are made available to the Trustees, along with all Policies, Procedures and Risk Assessments.
- As a Charity we have Insurance cover under Ansvar with a "Certificate of Employers, Liability Insurance".
- Regular meetings are minuted and held approximately quarterly, and decisions are subject to a majority vote from a quorum.

### **3. Objectives and Activities**

*"A well of hope in a thirsty land"*

- The Tanzania (UK) Trust applies the income of the charity in furthering within Tanzania: the advancement of the Christian faith, promotion and protection of physical and mental health, and advancement of education.
- The Tanzania (UK) Trust's main activities/strategies for meeting these objectives are:
  - Fundraising from individuals, events and organisations, to meet the objectives of the Trust;
  - Raising awareness of the Trust and its objectives;

- Partnering with the church in Dodoma, Tanzania, in meeting the Trust's objectives.

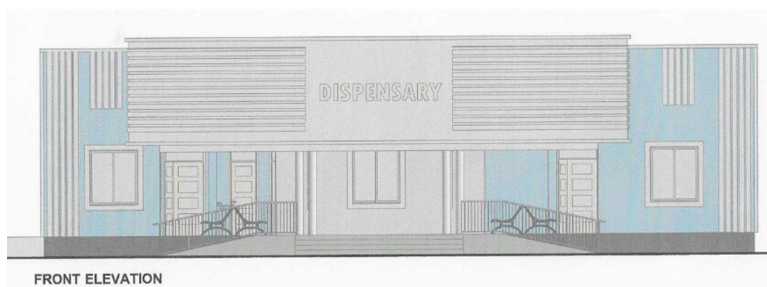
#### 4. Public Benefit Statement

The Tanzania (UK) Trust Trustees have complied with our duty to have due regard to guidance on public benefit published by the Commission in exercising our powers and duties.

#### 5. Achievements and Performance

##### Fundraising

- Fund raising has been more focused on future vision this year as the Trustees thought through the request to join with the TAG Church in building a health centre at Nduli. After 9 months (March-November 2022) of contemplation and prayer, we were in agreement to start building. We have looked at ways of reducing the cost, despite the economic crisis in Tanzania, where prices are doubling. We have been blessed with a lot of professionals and volunteers giving their time voluntarily to build the Health Centre. The plot we are building on had been allocated for a Health Centre 22 years ago: they were waiting for someone to have faith / resources to build!



- We continue to financially support the Tazama na Tunza Health Centre on a reducing scale aiming at self-sustainability by 2023-24. One-off gifts have also been made to Wisdom School, CCC Church and individuals in need.

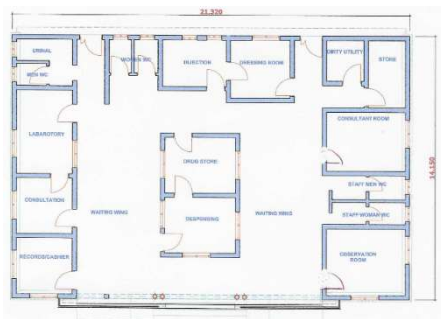
These donations came from Churches, individuals and links with St James's school in Glossop as well as fund-raising activities such as an Evening Dinner Party, a Sponsored Half Marathon and a Garden Tea Party. All unspecified donations go into the future vision fund. The Tazama na Tunza Dispensary (Health Centre) is now 5 years old and specialises in reaching the poor with chronic health conditions. The Health Centre belongs to the Church, and we continue to support them with training and equipping. The Mamas Unit we built annexed to the Health Centre, is very popular. It still awaits a Government fridge for vaccinations, which are presently bicycled in from a neighboring center, daily.



- Specific monthly support for individuals as needs arise: We sponsor families with their education and have started, in a small way, to support children attending the Church Wisdom School who have no financial support. Where needed we also support volunteer medical staff and patients reached by the Tazama na Tunza volunteer team.
- The Dodoma Church outreach to unreached areas. We have supported this since our inauguration, amounting to £420 a month. This is from on-going donations from individuals and churches.
- We continue linking with 2 UK pastors who visit and support Bible Gospel Teaching to pastors in the Mbeya region of Tanzania and who send money out for this work.
- We have asked the Funded Team to provide us with grant matches to other charities or organisations and we are going to put in funded bids.
- We have regular support from churches to cover the general work of the Trust. We thank God that every month we have had enough money to send out to cover the work we are involved with in Tanzania. This is an on-going miracle.
- We review our method of transferring funds to Tanzania, and are happy that they are secure, transparent and timely, and we have an independent inspection of our accounts annually.
- We are covered by an Indemnity Insurance Policy with Ansvar.

### Trip to Tanzania March 2023

To build partnership, the UK Trust exchanges trips with the Church in Dodoma, Tanzania. This year a Doctor, 2 Nurses, a Vicar and an Administrator visited Tanzania. We spent some time at Nduli village where we taught First Aid to the local TAG School teachers and Church and prayed over the site of the new Health Centre where the foundations had been started.



We also spent time with the Tazama na Tunza Dispensary in Dodoma, where we encouraged them with their vision to reach the poorest in the community with chronic health care needs and also spent a week-end updating the medical team. The Tazama na Tunza Dispensary, managed by the Church is offering trustworthy



assessments, diagnoses and treatments and keeps the vision of focusing on the poor in the community. Especially good to see were the team-working across all the roles in the Health Centre and with the House of Prayer.



We encouraged the Church by spending time with the Church School, the Mamas and the Babas, The Tazama na Tunza Health Volunteers, Mission pastors, as well as in the House of Prayer encouraging ourselves in God's goodness! The Archbishop of Tanzania Assemblies of God Church, Barnabas, also encouraged us to enlarge our vision.



### The Health Centre: Tazama na Tunza Dispensary

The Tazama na Tunza Dispensary is the mutual vision of the community, church and our charity to meet the needs of those chronically sick in the community. Capital Christian Centre owns and runs the TTD: the Trust's role is to facilitate the work. The business plan is in step with the vision to reach the local community, especially the poorest and to offer them trust-worthy tests, diagnosis, treatment and medication that is affordable to the poorer in the community. (All healthcare, whether private or government run, has to be paid for on contact, by the patient in Tanzania - excluding childhood immunizations, maternity care, TB and HIV treatment).

The Health Centre is progressing well towards being self-sustainable and our donation to them monthly is reducing from £600 to £100. The Church has set up a Pharmacy in town to help fund the Health Centre, which reaches to the poorest in the community.





We offer community health teaching monthly followed by free Doctor visits and testing. Unlike UK, most conditions seen are still infections and so need tests. The staff are 3 Doctors, 3 Nurse/Midwives, 3 laboratory Technicians, 2 Pharmacists, 2 Receptionists and 1 cleaner as well as a Radiologist (voluntary) for the scanner. The Health Centre overseen by a manager and is now open 8am to 10pm. Sundays remain a day of rest.

We work with the Church in holistic care and offer prayer for any patients who need it. Patient numbers continue to increase varying from 40 – 100+ a day (this is seasonal) and the Mamas Unit is very popular with 70-100 attending for check-ups, immunisations and advice.

Communications between the Trust and TTD have been strong, effective and trustworthy. Communications between TTD and the local community, churches, schools, Compassion groups, and Public Health have developed strong links. The TTD building remains very clean and very welcoming.

The footfall is seasonal and costs have increased due to the cost-of-living post-pandemic and with the world financial crisis. The cost of energy, services, fuel, all laboratory equipment and solutions and all medications etc. has risen twofold, especially those items that are imported. The custom that we continue to challenge is that in Tanzania people generally only seek medical help when it is an emergency, so they go to the hospital and pay high hospital fees there, when they are acutely ill. Our aim continues to be that people come to see us with earlier symptoms or chronic conditions so that they can be treated more effectively earlier and live normal lives in the community.

We continue working with Health Insurance groups as well, where working patients are covered by health insurance. The Greycare Computer System has been very efficient, reliable and effective at storing patient information clearly and confidentially and also recording the business functions of TTD. We installed fiber for better Internet access needed for health insurance card use.

The Church provides oversight regarding management and finance and Pastor Zephaniah is in overall control and is very pro-active at understanding how to move forward with health in the community. Our choice of staff was for those who were both clinically good and also Christians of good character. The staff are now on 3 year contracts with a national graded wage, and newcomers usually volunteer, are assessed and then may progress to being contracted. Some of the local schools, colleges and Compassion children's groups have named TTD as their Health Provider.

On our visit in March the outstanding features of the Health Centre were that it is trust-worthy and built on trust, their team-working is exceptionally good, they manage A&E type incidents very well and the Centre is very clean!

### Memorandum of Understanding

The Memorandum of Understanding between the Trust and the Tanzania Assemblies of God Church (which the Dodoma Capital Christian Church belongs to) gives clarity and guidelines to how we work in partnership, on-going. We met with the Archbishop and his team in March and have updated the Memorandum. He has challenged us to enlarge our vision!



### Policies

The policies and risk assessments are in place and have been updated including the working partnership policy for the Health Centre, Tazama na Tunza Guidelines and all risk assessments. Our Tanzanian partners asked that we only invite Christians to stay with them on our trips, because of the sensitive politics and faith issues that arise there, and we are complying with their wishes. We work with CCPAS regarding safeguarding policies and individual DBS checks. We also have a Use of Visual Images agreement with the Dodoma church. The General Data Protection Regulations compliance and Privacy Policy has now also been in place since May 2018.

## **6. Addressing the Objectives**

### Health Promotion

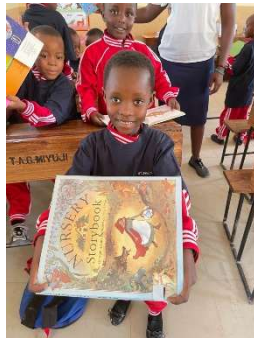
- **Advocacy**: Our group volunteer trip to Tanzania went exceptionally well, building partnership and understanding of their health needs, updating and equipping them in order to meet the needs of the poor who are chronically sick in the community and for it to be a sustainable model of excellent trustworthy diagnosis, tests, medication and care in Tanzania. We are also building partnership and a new Health Centre in Nduli to duplicate this model there, God willing.
- **Information**: Our website [www.tanzaniauk.org.uk](http://www.tanzaniauk.org.uk) is being updated by a professional and so will be fit for purpose in the next month. Seven newsletters were circulated through our growing contact list in the UK to publicise the work of the Trust, as well as regular WhatsApp information sharing. We have started a small Facebook site. We are updating our publicity fliers. We gave talks to local churches and schools.
- **Resource**: The Health Centre meets the needs of the health of the local community, and this has been our most recent major objective. This is why we are building a second one in Nduli. We also provided Swahili teaching



materials to the TTD staff, the Tazama na Tunza volunteers and the Nduli Church and Teachers. These can also be given to the patients. TTD should become self-sustainable and we continue to decrease the regular donations until the Charity becomes a resource for emergencies or new equipment only. This will allow capacity for the Nduli Health Centre, God willing. The Dodoma Church are already providing support for the Health Centre in the present world financial crisis, by profits donated from a city pharmacy.

### Relief of Poverty

- **Advocacy**: ongoing financial support for the advancement of the Christian faith in Tanzania by the church – to unreached areas. We are also partnering with St James's School, Glossop to build relations with Wisdom School, Dodoma. Wisdom School came in the top 10 in regional exams!



- **Information**: The Trust gains more understanding as our partnership grows, of the reasons for and effect of poverty on everyday life of the Dodoma community and how we can effectively work with them. The fact that Dodoma has become the capital city of Tanzania, does not affect the poor community we serve – only to accentuate the relative poverty of the area. As we adopt the Nduli vision, rural poverty will also be addressed.
- **Resource**: The Health Centres for those who are ill in the community to come for low-cost trustworthy diagnosis, tests and treatment. Maintenance of the well for safe water, next to TTD, on church grounds. We support Wisdom School - as Compassion's strategy for support has changed.

The issue of national price rises across every commodity in Tanzania, as the International Financial Crisis deepens in poorer countries. This means that we need to be more open to where the needs are, and to be available to give some financial relief to those we are already involved with.

### Christian Activities

- **Advocacy**: regular prayer of individuals, Trustees and churches along with open communications and sharing of strengths and resources. We are linked with two pastors in UK who are supporting Church Leaders in the Mbeya region to teach the gospel message from a Bible teaching perspective.
- **Information**: mutual sharing of information for praise, prayer and developing churches. Pastor Zephaniah is now the National Director of Youth (Christian Ambassadors) for the whole of Tanzania (Mkurugenzi Mkuu wa idara ya CA) as

well as National Co-Ordinator of the Pastor's Children's Fellowship. This does not include a wage increase. So as our Charity partner, we need to pray for and support him as well as his Church and the TAG and wider Church in Tanzania.



- Resource: regular monthly giving for pastors to plant churches and conduct missions. Also support where needed within the partnership, with money raised.

## 7. Future Plans

- Support for the Health Centre: Tazama na Tunza Dispensary to become self-sustaining. This is in process, though the economic climate is difficult presently. To train, equip and update the staff and encourage best practice through following the Tanzanian Medical Protocols and gold standard guidelines. We thank God that we are gaining a good reputation for our modern, trustworthy care. Our vision continues to be for the Health Centre to be a centre for excellence in Chronic Health Care in the community and region, which the poorest people can access equally with others. We pray on for the Government Fridge for the Mamas Unit! Our vision is that the Mamas Unit will be increasingly used by the community and save some of the 524 pregnant mothers in 100,000 in Tanzania who die in childbirth (compared to 9 in UK). This service will also care for the HIV patients in the community.
- Build the Nduli Health Centre: As this report is being written, the Nduli Health Centre is being built. We thank God for the amazing way that He has provided money this far: it is miraculous. We plan that this Health Centre will be run on the same model as Dodoma, allowing for rural differences, meeting the needs of the poor in the community.
- Support the Church Wisdom School, as Compassion support has changed and build partnership with St James's School, Glossop. Plan to build a UK school partnership with Ebenezer Church School in Nduli.
- Health promotion: For on-going training, advocacy and resourcing for the Health Centre staff, volunteers and reaching out into the community and rural villages in their own language and culture.
- Continue the Vision Mission of reading glasses for those who can no longer read in Tanzania due to increasing age or reducing sight.



- Young People: We aim to envision, equip, and mobilise more young people to participate in the work of the Trust in UK. Our 2020 trip to Tanzania was cancelled due to the Pandemic, and we are actively looking at how to extend our volunteers in younger age groups here in UK.
- Continue regular prayer support: in partnership with the Capital Christian Centre Church, and TAG, for the work.
- To develop the Trust's WhatsApp group, Facebook site and Website as a form of communication. We are also looking at other social media where our work can be presented and the Trust's objectives met.
- Proactively seek opportunities to present the work of the Trust to new audiences. There is a planned trip for Pastor Zephaniah Mkuyu and the Lead Doctor and Pharmacist from the Dodoma Health Centre to come to visit UK in May 2023. This will enable us to spread the vision of the Charity to other Churches, schools, organisations and individuals. The agenda for the trip involves many speaking engagements as well as medical experience for the Doctor and Pharmacist

## 8. Long-term plans

- **Complete the building of the Nduli Health Centre and employ trustworthy staff to carry on the vision of reaching the poor with good health care and God's love.** This is already being empowered by God.



- For the **Tazama na Tunza Dispensary** to be self-sustaining financially and to encourage it to continue to be a model of excellence focusing on meeting the health needs of the poor in the community and knowing God's love for them. For the TTD doctors to be skilled in examination and diagnosis, with support from UK sharing best practice. For the volunteers to remain actively seeking those in need in the community, to share health promotion and God's love with them.
- **To maintain the holistic care that TTD offers and Nduli will offer, in giving patients physical, mental, emotional, social and spiritual support to move forwards positively in life and as a community, involving the House of Prayer. Health working hand in hand with Mission.**
- Broaden our UK base of prayer and financial support, especially with the youth.

- Seek ways of providing a safe water supply in local rural communities, in discussion with Water Aid or other recognized charities or government agencies. The Tazama na Tunza Dispensary's water comes from the well we drilled in 1993.
- Find ways of providing start-up support for identified beneficiaries to set up income-providing self-sustainable projects to reduce their poverty and meet their needs.

#### 9. Financial Review

- The Statement of Accounts for this period has been independently examined and is attached;
- We hold in reserve the equivalent of three months' support for our partners in Tanzania (currently £2,000). This is in case of an emergency situation either with the donors or the recipients of support from the charity;
- At present our funds are not in deficit.

We hereby declare that the Trustees have approved the above Report, and have authorised us to sign it on their behalf.

Signed: Ruben Chorley (Chairperson)

[Signature] (Secretary)

Date: 6/10/2024

Tanzania (UK) Trust		Charity No	1133490			
		Company No				
Annual accounts for the period						
Period start date	01/04/2023	To	Period end date	31/03/2024		

## Section A Statement of financial activities (including summary income and expenditure account)

Recommended categories by activity	Guidance Note	Unrestricted funds	Restricted income funds	Endowment funds	Total funds	Prior year funds
		£	£	£	£	£
		F01	F02	F03	F04	F05
<b>Income (Note 3)</b>						
Income and endowments from:						
Donations and legacies	S01	13,077	45,465		58,542	73,698
Charitable activities	S02		313		313	1,610
Other trading activities	S03				-	
Investments	S04			-	-	
Separate material item of income	S05	-	-	-	-	
Other	S06	-	-	-	-	
<b>Total</b>	S07	13,077	45,778	-	58,855	75,308
<b>Expenditure (Notes 6)</b>						
Expenditure on:						
Raising funds	S08			-	-	204
Charitable activities	S09	12,864	61,004		73,868	64,770
Separate material expense item	S10					
Other	S11	60		-	60	60
<b>Total</b>	S12	12,924	61,004	-	73,928	65,034
<b>Net income/(expenditure) before tax for the reporting period</b>						
	S13	153	- 15,226	-	- 15,073	10,274
Tax payable	S14	-	-	-	-	-
<b>Net income/(expenditure) after tax before investment gains/(losses)</b>						
	S15	153	- 15,226	-	- 15,073	10,274
Net gains/(losses) on investments	S16	-		-	-	-
<b>Net income/(expenditure) Extraordinary items</b>	S17	153	- 15,226	-	- 15,073	10,274
	S18	-	-	-	-	
<b>Transfers between funds</b>	S19	-	-	-	-	-
<b>Other recognised gains/(losses):</b>						
Gains and losses on revaluation of fixed assets for the charity's own use	S20	-	-	-	-	-
Other gains/(losses)	S21	-	-	-	-	-
<b>Net movement in funds</b>	S22	153	- 15,226	-	- 15,073	10,274
<b>Reconciliation of funds:</b>						
Total funds brought forward	S23	6,172	16,346	-	22,518	12,244
<b>Total funds carried forward</b>	S24	6,325	1,120	-	7,445	22,518

## Section B

## Balance sheet

		Guidance Note	Unrestricted funds £	Restricted income funds £	Endowment funds £	Total this year £	Total last year £
			F01	F02	F03	F04	F05
<b>Fixed assets</b>							
Intangible assets (Note 15)	B01		-	-	-	-	-
Tangible assets (Note 14)	B02		-	-	-	-	-
Heritage assets (Note 16)	B03		-	-	-	-	-
Investments (Note 17)	B04		-	-	-	-	-
<b>Total fixed assets</b>	B05		-	-	-	-	-
<b>Current assets</b>							
Stocks (Note 18)	B06		-	-	-	-	-
Debtors (Note 19)	B07		1,072	-	-	1,072	6,093
Investments (Note 17.4)	B08		-	-	-	-	-
Cash at bank and in hand (Note 24)	B09		5,553	1,120	-	6,673	16,425
	B10		6,625	1,120	-	7,745	22,518
Creditors: amounts falling due within one year (Note 20)	B11		-	-	-	-	-
<b>Net current assets/(liabilities)</b>	B12		6,625	1,120	-	7,745	22,518
<b>Total assets less current liabilities</b>	B13		6,625	1,120	-	7,745	22,518
Creditors: amounts falling due after one year (Note 20)	B14		-	-	-	-	-
Provisions for liabilities	B15		-	-	-	-	-
<b>Total net assets or liabilities</b>	B16		6,625	1,120	-	7,745	22,518
<b>Funds of the Charity</b>							
Endowment funds (Note 27)	B17		-	-	-	-	-
Restricted income funds (Note 27)	B18		-	1,120	-	1,120	16,346
Unrestricted funds	B19		6,325	-	-	6,325	6,172
Revaluation reserve	B20		-	-	-	-	-
Fair value reserve	B21		-	-	-	-	-
<b>Total funds</b>	B22		6,325	1,120	-	7,445	22,518

The company was entitled to exemption from audit under s477 of the Companies Act 2006 relating to small companies.

The members have not required the company to obtain an audit in accordance with section 476 of the Companies Act 2006.

The directors acknowledge their responsibilities for complying with the requirements of the Companies Act with respect to accounting records and the preparation of accounts.

These accounts have been prepared in accordance with the provisions applicable to small companies subject to the small companies regime and in accordance with FRS102 SORP.

Signed by one or two trustees/directors on behalf of all the trustees/directors

*Ruth Cholley*

Print Name	Date of approval dd/mm/yyyy
RUTH CHOLLEY	6/10/24

Signature of director authenticating accounts being sent to Companies House

*Alan L. Smith*

Signature	Date dd/mm/yyyy
ALAN L. SMITH	6/10/24
Print name	




<b>Section C</b>	<b>Notes to the accounts</b>
------------------	------------------------------

## Note 1 Basis of preparation

***This section should be completed by all charities .***

### 1.1 Basis of accounting

These accounts have been prepared under the historical cost convention with items recognised at cost or transaction value unless otherwise stated in the relevant note(s) to these accounts.

The accounts have been prepared in accordance with:

- |             |   |   |
|-------------|---|---|
| • and with* | ✓ | the Statement of Recommended Practice: Accounting and Reporting by Charities preparing their accounts in accordance with the Financial Reporting Standard applicable in the UK and Republic of Ireland (FRS 102) issued on 16 July 2014 |
| • and with* | ✓ | the Financial Reporting Standard applicable in the United Kingdom and Republic of Ireland (FRS 102)   |
- and with the Charities Act 2011.

The charity constitutes a public benefit entity as defined by FRS 102.\*

--

\* -Tick as appropriate

### 1.2 Going concern

***If there are material uncertainties related to events or conditions that cast significant doubt on the charity's ability to continue as a going concern, please provide the following details or state "Not applicable", if appropriate:***

An explanation as to those factors that support the conclusion that the charity is a going concern;

<b>NA</b>
-----------

Disclosure of any uncertainties that make the going concern assumption doubtful;

<b>NA</b>
-----------

Where accounts are not prepared on a going concern basis, please disclose this fact together with the basis on which the trustees prepared the accounts and the reason why the charity is not regarded as a going concern.

<b>NA</b>
-----------

### 1.3 Change of accounting policy

The accounts present a true and fair view and no changes have been made to the accounting policies adopted in note { }.

Yes*	✓	* -Tick as appropriate
No*		

***Please disclose:***

<b><i>(i) the nature of the change in accounting policy;</i></b>	
<b><i>(ii) the reasons why applying the new accounting policy provides more reliable and more relevant information; and</i></b>	

<b><i>(iii) the amount of the adjustment for each line affected in the current period, each prior period presented and the aggregate amount of the adjustment relating to periods before those presented, 3.44 FRS102 SORP.</i></b>	
---	--

#### 1.4 Changes to accounting estimates

No changes to accounting estimates have occurred in the reporting period (3.46 FRS102 SORP).

Yes*	<input checked="" type="checkbox"/>	* -Tick as appropriate
No*	<input type="checkbox"/>	

**Please disclose:**

<b><i>(i) the nature of any changes;</i></b>	
<b><i>(ii) the effect of the change on income and expense or assets and liabilities for the current period; and</i></b>	
<b><i>(iii) where practicable, the effect of the change in one or more future periods.</i></b>	

#### 1.5 Material prior year errors

No material prior year error have been identified in the reporting period (3.47 FRS102 SORP).

Yes*	<input type="checkbox"/>	* -Tick as appropriate
No*	<input checked="" type="checkbox"/>	

**Please disclose:**

<b><i>(i) the nature of the prior period error;</i></b>	Income received but excluded in the reporting period
<b><i>(ii) for each prior period presented in the accounts, the amount of the correction for each account line item affected; and</i></b>	Financial year end March 2022 £1.250 of Restricted Income – Charitable Activities. There is no expenditure against this income. Which means the full amount should be in the bank and Restricted income Funds on the balance sheet
<b><i>(iii) the amount of the correction at the beginning of the earliest prior period presented in the accounts.</i></b>	<b><i>Only the prior year Income, and funds figures to be amended as above</i></b>



**Note 2 Accounting policies**

*This standard list of accounting policies has been applied by the charity except for those deleted. Where a different or additional policy has been adopted then this is detailed in the box below.*

**2.1 RECONCILIATION WITH PREVIOUS GENERALLY ACCEPTED ACCOUNTING PRACTICE**

Please provide a description of the nature of each change in accounting policy

**Reconciliation of funds per previous GAAP to funds determined under FRS 102**

	Start of period £	End of period £
Fund balances as previously stated		
Adjustments:		

Fund balance as restated \_\_\_\_\_

**Reconciliation of net income/(net expenditure) per previous GAAP to net income/(net expenditure) under FRS 102**

	End of £
Net income/(expenditure) as previously stated	
Adjustments:	

Previous period net income/(expenditure) as restated \_\_\_\_\_



## Note 2

### 2.2 INCOME

#### Accounting policies

#### Recognition of income

These are included in the Statement of Financial Activities (SoFA) when:

- the charity becomes entitled to the resources;
- it is more likely than not that the trustees will receive the resources;
- the monetary value can be measured with sufficient reliability.

Yes*	No*	N/a*
✓	✓	✓

#### Offsetting

There has been no offsetting of assets and liabilities, or income and expenses, unless required or permitted by the FRS 102 SORP or FRS 102.

Yes*	No*	N/a*
✓	✓	✓

#### Grants and donations

Grants and donations are only included in the SoFA when the general income recognition criteria are met (5.10 to 5.12 FRS102 SORP).

Yes*	No*	N/a*
✓	✓	

In the case of performance related grants, income must only be recognised to the extent that the charity has provided the specified goods or services as entitlement to the grant only occurs when the performance related conditions are met (5.16 FRS 102 SORP).

Yes*	No*	N/a*
✓	✓	✓

#### Legacies

Legacies are included in the SOFA when receipt is probable, that is, when there has been grant of probate, the executors have established that there are sufficient assets in the estate and any conditions attached to the legacy are either within the control of the charity or have been met.

Yes*	No*	N/a*
✓	✓	✓

#### Government grants

The charity has received government grants in the reporting period

Yes*	No*	N/a*
✓	✓	✓

#### Tax reclaims on donations and gifts

Gift Aid receivable is included in income when there is a valid declaration from the donor. Any Gift Aid amount recovered on a donation is considered to be part of that gift and is treated as an addition to the same fund as the initial donation unless the donor or the terms of the appeal have specified otherwise.

Yes*	No*	N/a*
✓	✓	✓

#### Contractual income and performance related grants

This is only included in the SoFA once the charity has provided the related goods or services or met the performance related conditions.

Yes*	No*	N/a*
✓	✓	✓

#### Donated goods

Donated goods are measured at fair value (the amount for which the asset could be exchanged) unless impractical to do so.

Yes*	No*	N/a*
✓	✓	✓

The cost of any stock of goods donated for distribution to beneficiaries is deemed to be the fair value of those gifts at the time of their receipt and they are recognised on receipt. In the reporting period in which the stocks are distributed, they are recognised as an expense at the carrying amount of the stocks at distribution.

Yes*	No*	N/a*
✓	✓	✓

Donated goods for resale are measured at fair value on initial recognition, which is the expected proceeds from sale less the expected costs of sale, and recognised in 'Income from other trading activities' with the corresponding stock recognised in the balance sheet. On its sale the value of stock is charged against 'Income from other trading activities' and the proceeds from sale are also recognised as 'Income from other trading activities'.

Yes*	No*	N/a*
✓	✓	✓

Goods donated for on-going use by the charity are recognised as tangible fixed assets and included in the SoFA as incoming resources when receivable.

Yes*	No*	N/a*
✓	✓	✓

Gifts in kind for use by the charity are included in the SoFA as income from donations when receivable.

Yes*	No*	N/a*
✓	✓	✓

#### Donated services and facilities

Donated services and facilities are included in the SOFA when received at the value of the gift to the charity provided the value of the gift can be measured reliably.

Yes*	No*	N/a*
✓	✓	✓

Donated services and facilities that are consumed immediately are recognised as income with an equivalent amount recognised as an expense under the appropriate heading in the SOFA.

Yes*	No*	N/a*
✓	✓	✓

#### Support costs

The charity has incurred expenditure on support costs.

Yes*	No*	N/a*
✓	✓	✓

#### Volunteer help

The value of any voluntary help received is not included in the accounts but is described in the trustees' annual report.

Yes*	No*	N/a*
✓	✓	✓

#### Income from interest,

This is included in the accounts when receipt is probable and the amount receivable can

Yes*	No*	N/a*
------	-----	------

<b>royalties and dividends</b>	be measured reliably.	<input checked="" type="checkbox"/>	<input checked="" type="checkbox"/>	<input checked="" type="checkbox"/>
<b>Income from membership subscriptions</b>	Membership subscriptions received in the nature of a gift are recognised in Donations and Legacies.	Yes*	No*	N/a*
	Membership subscriptions which gives a member the right to buy services or other benefits are recognised as income earned from the provision of goods and services as income from charitable activities.	<input checked="" type="checkbox"/>	<input checked="" type="checkbox"/>	<input checked="" type="checkbox"/>
<b>Settlement of insurance claims</b>	Insurance claims are only included in the SoFA when the general income recognition criteria are met (5.10 to 5.12 FRS102 SORP) and are included as an item of other income in the SoFA.	Yes*	No*	N/a*
		<input checked="" type="checkbox"/>	<input checked="" type="checkbox"/>	<input checked="" type="checkbox"/>
<b>Investment gains and losses</b>	This includes any realised or unrealised gains or losses on the sale of investments and any gain or loss resulting from revaluing investments to market value at the end of the year.	Yes*	No*	N/a*
		<input checked="" type="checkbox"/>	<input checked="" type="checkbox"/>	<input checked="" type="checkbox"/>

## 2.3 EXPENDITURE AND LIABILITIES

<b>Liability recognition</b>	Liabilities are recognised where it is more likely than not that there is a legal or constructive obligation committing the charity to pay out resources and the amount of the obligation can be measured with reasonable certainty.	Yes*	No*	N/a*
		<input checked="" type="checkbox"/>	<input checked="" type="checkbox"/>	<input checked="" type="checkbox"/>
<b>Governance and support costs</b>	Support costs have been allocated between governance costs and other support. Governance costs comprise all costs involving public accountability of the charity and its compliance with regulation and good practice.	Yes*	No*	N/a*
		<input checked="" type="checkbox"/>	<input checked="" type="checkbox"/>	<input checked="" type="checkbox"/>
	Support costs include central functions and have been allocated to activity cost categories on a basis consistent with the use of resources, eg allocating property costs by floor areas, or per capita, staff costs by the time spent and other costs by their usage.	Yes*	No*	N/a*
		<input checked="" type="checkbox"/>	<input checked="" type="checkbox"/>	<input checked="" type="checkbox"/>
<b>Grants with performance conditions</b>	Where the charity gives a grant with conditions for its payment being a specific level of service or output to be provided, such grants are only recognised in the SoFA once the recipient of the grant has provided the specified service or output.	Yes*	No*	N/a*
		<input checked="" type="checkbox"/>	<input checked="" type="checkbox"/>	<input checked="" type="checkbox"/>
<b>Grants payable without performance conditions</b>	Where there are no conditions attaching to the grant that enables the donor charity to realistically avoid the commitment, a liability for the full funding obligation must be recognised.	Yes*	No*	N/a*
		<input checked="" type="checkbox"/>	<input checked="" type="checkbox"/>	<input checked="" type="checkbox"/>
<b>Redundancy cost</b>	The charity made no redundancy payments during the reporting period.	Yes*	No*	N/a*
		<input checked="" type="checkbox"/>	<input checked="" type="checkbox"/>	<input checked="" type="checkbox"/>
<b>Deferred income</b>	No material item of deferred income has been included in the accounts.	Yes*	No*	N/a*
		<input checked="" type="checkbox"/>	<input checked="" type="checkbox"/>	<input checked="" type="checkbox"/>
<b>Creditors</b>	The charity has creditors which are measured at settlement amounts less any trade discounts	Yes*	No*	N/a*
		<input checked="" type="checkbox"/>	<input checked="" type="checkbox"/>	<input checked="" type="checkbox"/>
<b>Provisions for liabilities</b>	A liability is measured on recognition at its historical cost and then subsequently measured at the best estimate of the amount required to settle the obligation at the reporting date	Yes*	No*	N/a*
		<input checked="" type="checkbox"/>	<input checked="" type="checkbox"/>	<input checked="" type="checkbox"/>
<b>Basic financial instruments</b>	The charity accounts for basic financial instruments on initial recognition as per paragraph 10.7 FRS102 SORP. Subsequent measurement is as per paragraphs 11.17 to 11.19, FRS102 SORP.	Yes*	No*	N/a*
		<input checked="" type="checkbox"/>	<input checked="" type="checkbox"/>	<input checked="" type="checkbox"/>

## 2.4 ASSETS

<b>Tangible fixed assets for use by charity</b>	These are capitalised if they can be used for more than one year, and cost at least			
	They are valued at cost.	Yes*	No*	N/a*
		<input checked="" type="checkbox"/>	<input checked="" type="checkbox"/>	<input checked="" type="checkbox"/>
	The depreciation rates and methods used are disclosed in note 14.			
<b>Intangible fixed assets</b>	The charity has intangible fixed assets, that is, non-monetary assets that do not have physical substance but are identifiable and are controlled by the charity through custody or legal rights. The amortisation rates and methods used are disclosed in note 15.	Yes*	No*	N/a*
		<input checked="" type="checkbox"/>	<input checked="" type="checkbox"/>	<input checked="" type="checkbox"/>
	They are valued at cost.	Yes*	No*	N/a*
		<input checked="" type="checkbox"/>	<input checked="" type="checkbox"/>	<input checked="" type="checkbox"/>
<b>Heritage assets</b>	The charity has heritage assets, that is, non-monetary assets with historic, artistic, scientific, technological, geophysical or environmental qualities that are held and maintained principally for their contribution to knowledge and culture. The depreciation rates and methods used as disclosed in note 16.	Yes*	No*	N/a*
		<input checked="" type="checkbox"/>	<input checked="" type="checkbox"/>	<input checked="" type="checkbox"/>
	They are valued at cost.	Yes*	No*	N/a*
		<input checked="" type="checkbox"/>	<input checked="" type="checkbox"/>	<input checked="" type="checkbox"/>
<b>Investments</b>	Fixed asset investments in quoted shares, traded bonds and similar investments are valued at initially at cost and subsequently at fair value (their market value) at the year end. The same treatment is applied to unlisted investments unless fair value cannot be measured reliably in which case it is measured at cost less impairment.	Yes*	No*	N/a*
		<input checked="" type="checkbox"/>	<input checked="" type="checkbox"/>	<input checked="" type="checkbox"/>
	Investments held for resale or pending their sale and cash and cash equivalents with a	Yes*	No*	N/a*

	maturity date of less than 1 year are treated as current asset investments	<input checked="" type="checkbox"/>	<input checked="" type="checkbox"/>	<input checked="" type="checkbox"/>
<b>Stocks and work in progress</b>	Stocks held for sale as part of non-charitable trade are measured at the lower or cost or net realisable value.	Yes*	No*	N/a*
		<input checked="" type="checkbox"/>	<input checked="" type="checkbox"/>	<input checked="" type="checkbox"/>
	Goods or services provided as part of a charitable activity are measured at net realisable value based on the service potential provided by items of stock.	Yes*	No*	N/a*
		<input checked="" type="checkbox"/>	<input checked="" type="checkbox"/>	<input checked="" type="checkbox"/>
	Work in progress is valued at cost less any foreseeable loss that is likely to occur on the contract.	Yes*	No*	N/a*
		<input checked="" type="checkbox"/>	<input checked="" type="checkbox"/>	<input checked="" type="checkbox"/>
<b>Debtors</b>	Debtors (including trade debtors and loans receivable) are measured on initial recognition at settlement amount after any trade discounts or amount advanced by the charity. Subsequently, they are measured at the cash or other consideration expected to be received.	Yes*	No*	N/a*
		<input checked="" type="checkbox"/>	<input checked="" type="checkbox"/>	<input checked="" type="checkbox"/>
<b>Current asset investments</b>	The charity has investments which it holds for resale or pending their sale and cash and cash equivalents with a maturity date less than one year. These include cash on deposit and cash equivalents with a maturity of less than one year held for investment purposes rather than to meet short-term cash commitments as they fall due.	Yes*	No*	N/a*
		<input checked="" type="checkbox"/>	<input checked="" type="checkbox"/>	<input checked="" type="checkbox"/>
	They are valued at fair value except where they qualify as basic financial instruments.	Yes*	No*	N/a*
		<input checked="" type="checkbox"/>	<input checked="" type="checkbox"/>	<input checked="" type="checkbox"/>
<b>POLICIES ADOPTED ADDITIONAL TO OR DIFFERENT FROM THOSE ABOVE</b>				

## Note 3

## Income

Analysis of income		Unrestricted funds	Restricted income funds	Endowment funds	Total funds £	Prior year £
Donations and legacies:	Donations and gifts	11,535	42,185		53,720	61,836
	Gift Aid	1,543	3,279		4,822	11,862
	Legacies				-	
	General grants provided by government/other charities				-	-
	Membership subscriptions and sponsorships which are in substance donations				-	
	Donated goods, facilities and services	-	-	-	-	-
	Other	-	-	-	-	-
<b>Total</b>		<b>13,078</b>	<b>45,464</b>	<b>-</b>	<b>58,542</b>	<b>73,698</b>
Charitable activities:	Event 1		313		313	-
	Fundraising				-	1,610
	Goats				-	-
	Famine relief				-	-
	Other	-	-	-	-	-
	<b>Total</b>	<b>-</b>	<b>313</b>	<b>-</b>	<b>313</b>	<b>1,610</b>
Other trading activities:		-	-	-	-	-
		-	-	-	-	-
		-	-	-	-	-
	Other	-	-	-	-	-
<b>Total</b>		<b>-</b>	<b>-</b>	<b>-</b>	<b>-</b>	<b>-</b>
Income from investments:	Interest income	-	-	-	-	-
	Dividend income	-	-	-	-	-
	Rental and leasing income	-	-	-	-	-
	Other	-	-	-	-	-
<b>Total</b>		<b>-</b>	<b>-</b>	<b>-</b>	<b>-</b>	<b>-</b>
Separate material item of income		-	-	-	-	-
		-	-	-	-	-
		-	-	-	-	-
	<b>Total</b>	<b>-</b>	<b>-</b>	<b>-</b>	<b>-</b>	<b>-</b>
Other:	Conversion of endowment funds into income	-	-	-	-	-
	Gain on disposal of a tangible fixed asset held for charity's own use	-	-	-	-	-
	Gain on disposal of a programme related investment	-	-	-	-	-
	Royalties from the exploitation of intellectual property rights	-	-	-	-	-
	Other	-	-	-	-	-
	<b>Total</b>	<b>-</b>	<b>-</b>	<b>-</b>	<b>-</b>	<b>-</b>
<b>TOTAL INCOME</b>		<b>13,078</b>	<b>45,777</b>	<b>-</b>	<b>58,855</b>	<b>75,308</b>

## Other information:

All income in the prior year was unrestricted except for:  
(please provide description and amounts)

Where any endowment fund is converted into income in the reporting period, please give the reason for the conversion.



Within the income items above the following items are material: (please disclose the nature, amount and any prior year amounts)

Where sums originally denominated in foreign currency have been included in income, explain the basis on which those sums have been translated into sterling (or the currency in which the accounts are drawn up).

Note 4

Analysis of receipts of government grants

	Description	This year £	Last year £
Government grant 1		-	-
Government grant 2		-	-
Government grant 3		-	-
Other		-	-
	Total	-	-

*Please provide details of any unfulfilled conditions and other contingencies attaching to grants that have been recognised in income.*

*Please give details of other forms of government assistance from which the charity has directly benefited.*

**Note 5**                      **Donated goods, facilities and services**

	<b>This year</b>	<b>Last year</b>
	<b>£</b>	<b>£</b>
Seconded staff	-	-
Use of property	-	-
Other	-	-
	-	-

Please provide details of the accounting policy for the recognition and valuation of donated goods, facilities and services.

Please provide details of any unfulfilled conditions and other contingencies attaching to resources from donated goods and services not recognised in income.

Please give details of other forms of other donated goods and services not recognised in the accounts, eg contribution of unpaid volunteers.

|



Note 6

Expenditure

	Analysis of expenditure	Unrestricted funds	Restricted income funds	Endowment funds	Total funds £	Prior year £
Expenditure on raising funds:	Incurred seeking donations		-	-	-	204
	Incurred seeking legacies	-	-	-	-	-
	Incurred seeking grants				-	
	Operating membership schemes and social lotteries				-	
	Staging fundraising events				-	
	Fundraising agents				-	
	Operating charity shops				-	
	Operating a trading company undertaking non-charitable trading activity				-	
	Advertising, marketing, direct mail and publicity	-	-	-	-	-
	Start up costs incurred in generating new source of future income	-	-	-	-	-
	Database development costs	-	-	-	-	-
	Other trading activities				-	
	Investment management costs:	-	-	-	-	
	Portfolio management costs	-	-	-	-	-
	Cost of obtaining investment advice	-	-	-	-	-
	Investment administration costs	-	-	-	-	-
	Intellectual property licencing costs	-	-	-	-	-
	Rent collection, property repairs and maintenance charges	-	-	-	-	-
		-	-	-	-	-
	<b>Total expenditure on raising funds</b>	-	-	-	-	204
Expenditure on charitable activities	Transfer fees	277	82	-	359	81
	Church plants	9,485			9,485	6,040
	Insurance	607			607	593
	Office costs	550			550	288
	Visit		1,000		1,000	11,487
	Health Care		3,250		3,250	2,500
	Famine relief				-	316
	Child Sponsorship		1,180		1,180	2,532
	Volunteer cost in Tanzania				-	-
	Health Centre wages		1,260		1,260	3,100
	Health Centre		390		390	100
	Education	500	2,620		3,120	4,900
	Mozambique pastors emergency relief				-	
	Zeph	1,000		-	1,000	1,100
	Repairs in Tanzania				-	2,000
	Car				-	
	Gifts	300			300	

CCPAS costs		145		-	145	129
Nduli health centre build			51,222		51,222	29,604
Covid-19 relief				-	-	
<b>Total expenditure on charitable activities</b>		12,864	61,004	-	73,868	64,770
<b>Separate material item of expense</b>		-	-	-	-	-
		-	-	-	-	-
		-	-	-	-	-
		-	-	-	-	-
	<b>Total</b>	-	-	-	-	-
<b>Other</b>	Gift to independent examiner	60		-	60	60
		-	-	-	-	-
		-	-	-	-	-
		-	-	-	-	-
	<b>Total other expenditure</b>	60	-	-	60	60
<b>TOTAL EXPENDITURE</b>		12,924	61,004	-	73,928	65,034

**Other information:**

**Analysis of expenditure on charitable activities**

Activity or programme	Activities undertaken directly	Grant funding of activities	Support Costs	Total this year	Total prior year
	£	£	£	£	£
Activity 1					
Activity 2					
Other					
<b>Total</b>					

Prior year expenditure on charitable activities can be analysed as follows:

Within the expenditure items above the following items are material: (please disclose the nature, amount and any prior year amounts)

Where sums originally denominated in foreign currency have been included in expenditure, explain the basis on which those sums have been translated into sterling (or the currency in which the accounts are drawn up).

Section C	Notes to the accounts	(cont)
-----------	-----------------------	--------

**Note 7            Extraordinary items**

*Please explain the nature of each extraordinary item occurring in the period.*

	Description	This year £	Last year £
Extraordinary item 1		-	-
Extraordinary item 2		-	-
Extraordinary item 3		-	-
Extraordinary item 4		-	-
Total extraordinary items		-	-

Section C

Notes to the accounts

Note 8

Funds received as agent

8.1 Please complete this note if the charity has agreed to administer the funds of another entity as its agent. Note: If a charity is acting as an agent, it should not recognise the income in the Statement of Financial Activities or the Balance Sheet.

Description/name of party	Related party (Yes or No)	Amount received		Amount paid out		Balance held at period end	
		This year	Last year	This year	Last year	This year	Last year
		£	£	£	£	£	£
Gospel Partnership		26	1,812	209	1,672	-	183
		-	-	-	-	-	-
		-	-	-	-	-	-
		-	-	-	-	-	-
		-	-	-	-	-	-
Total		26	1,812	209	1,672	-	183

8.2 Where a consortia or similar arrangement exists whereby 2 or more charities co-operate to achieve economies in the purchase of goods or services, please disclose details of any balances outstanding between any participating members.

Description/name of party	Balance held at period end	
	This year	Last year
	£	£
	-	-
	-	-
	-	-
	-	-
	-	-
Total	-	-

<b>Section C</b>	<b>Notes to the accounts</b>
------------------	------------------------------

**Note 9                      Support Costs**

*Please complete this note if the charity has analysed its expenses using activity categories and has support costs.*

Support cost (examples)	Raising funds	Activity 1	Activity 2	Activity 3	Grand total	Basis of allocation
	£	£	£	£	£	(Describe method)
Governance	-	-		-	-	
	-	-		-	-	
	-	-		-	-	
	-	-		-	-	
Other	-	-		-	-	
<b>Total</b>	-	-		-	-	

*Please provide details of the accounting policy adopted for the apportionment of costs between activities and any estimation techniques used to calculate their apportionment.*

Section C	Notes to the accounts
-----------	-----------------------

**Note 10**                      **Details of certain types of expenditure**

**Note 10.1 Fees for examination of the accounts**

*Please provide details of the amount paid for any statutory external scrutiny of accounts and other services provided by your independent examiner. If nothing was paid please enter '0' in the appropriate box(es).*

**Independent examiner's fees**

**Assurance services other than independent examination**

**Tax advisory fees**

**Other fees (for example: financial advice, consultancy, accountancy services) paid to the independent examiner**

This year £	Last year £
60	60



## Note 11

## Paid employees

Please complete this note if the charity has any employees (transactions with Trustees dealt with in Note 28)

## 11.1 Staff Costs

	This year £	Last year £
Salaries and wages	-	-
Social security costs	-	-
Pension costs (defined contribution pension plan)	-	-
Other employee benefits	-	-
<b>Total staff costs</b>	-	-

Please provide details of expenditure on staff working for the charity whose contracts are with and are paid by a related party

Please give details of the number of employees whose total employee benefits (excluding employer pension costs) fell within each band of £10,000 from £60,000 upwards. If there are no such transactions, please enter 'true' in the box provided.

No employees received employee benefits (excluding employer pension costs) for the reporting period of more than £60,000

Band	Number of employees
£60,000 to £69,999	
£70,000 to £79,999	
£80,000 to £89,999	
£90,000 to £99,999	
£100,000 to £109,999	

Please provide the total amount paid to key management personnel (includes trustees and senior management) for their services to the charity. For specific amounts paid to trustees, see Note 28.

## 11.2 Average head count in the year

The parts of the charity in which the employees work

	This year Number	Last year Number
Fundraising	-	-
Charitable Activities	-	-
Governance	-	-
Other	-	-
<b>Total</b>	-	-

## 11.3 Ex-gratia payments to employees and others (excluding trustees)

Please complete if an ex-gratia payment is made.

Please explain the nature of the payment

Please state the legal authority or reason for making the payment

Please state the amount of the payment (or value of any waiver of a right to an asset)


## 11.4 Redundancy payments

Please complete if any redundancy or termination payment is made in the period.

Total amount of payment

The nature of the payment (cash, asset etc.)

The extent of redundancy funding at the balance sheet date

Please state the accounting policy for any redundancy or termination payments

**Section C****Notes to the accounts****(cont)**

**Note 12**                      **Defined contribution pension scheme or defined benefit scheme accounted for as a defined contribution scheme.**

**12.1** *Please complete this note if a defined contribution pension scheme is operated.*

Amount of contributions recognised in the SOFA as an expense

--

Please explain the basis for allocating the liability and expense of defined contribution pension scheme between activities and between restricted and unrestricted funds.

--

**12.2** *Please complete this section where the charity participates in a defined benefit pension plan but is unable to ascertain its share of the underlying assets and liabilities.*

Please confirm that although the scheme is accounted for as a defined contribution plan, it is a defined benefit plan.

--

Please provide such information as is available about the plan's surplus or deficit and the implications, if any, for the reporting charity

--

**12.3** *Please complete this section where the charity participates in a multi-employer defined benefit pension plan that is accounted for as a defined contribution plan.*

Describe the extent to which the charity can be liable to the plan for other entities' obligations under the terms and conditions of the multi-employer plan

--

Explain how any liability arising from an agreement with a multi-employer plan to fund a deficit has been determined.

--



<b>Section C</b>	<b>Notes to the accounts</b>	<b>(cont)</b>
------------------	------------------------------	---------------

**Note 13 Grantmaking**

*Please complete this note if the charity made any grants or donations which in aggregate form a material part of the charitable activities undertaken.*

**13.1 Analysis of grants paid (included in cost of charitable activities)**

Analysis	Grants to institutions	Grants to individuals	Support costs	Total
Activity or project 1			£	£
Activity or project 2			-	-
Activity or project 3			-	-
Activity or project 4			-	-
<b>Total</b>	-	-	-	-

*Please enter "Nil" if the charity does not identify and/or allocate support costs.*

**13.2 Grants made to institutions**

*My charity has made grants to particular institutions that are material in the context of its grantmaking. Details of the institution supported, purpose of the grant and total paid to each institution is available on the charity's web site.*

Yes	<i>Please provide details of charity's URL.</i>
No	<i>Provide details below</i>

Names of institution	Purpose	Total amount of grants paid £
		-
		-
		-
		-
		-
		-
		-
		-
		-
		-
<b>Total grants to institutions in reporting period</b>		-
<b>Other unanalysed grants</b>		-
<b>TOTAL GRANTS PAID</b>		-

**Note 14**                      **Tangible fixed assets***Please complete this note if the charity has any tangible fixed assets***14.1 Cost or valuation**

	Freehold land & buildings	Other land & buildings	Plant, machinery and motor vehicles	Fixtures, fittings and equipment	Total
	£	£	£	£	£
At the beginning of the year	-	-	-	-	-
Additions	-	-	-	-	-
Revaluations	-	-	-	-	-
Disposals	-	-	-	-	-
Transfers *	-	-	-	-	-
At end of the year	-	-	-	-	-

**14.2 Depreciation and impairments**

<b>**Basis</b>	SL or RB	SL or RB	SL or RB	SL or RB	SL or RB	Straight Line ("SL") or Reducing Balance ("RB")
<b>** Rate</b>						

At beginning of the year	-	-	-	-	-
Disposals	-	-	-	-	-
Depreciation	-	-	-	-	-
Impairment	-	-	-	-	-
Transfers*	-	-	-	-	-
At end of the year	-	-	-	-	-

**14.3 Net book value**

Net book value at the beginning of the year	-	-	-	-	-
Net book value at the end of the year	-	-	-	-	-

#### 14.4 Impairment

*Please provide a description of the events and circumstances that led to the recognition or reversal of an impairment loss.*

--

#### 14.5 Revaluation

*If an accounting policy of revaluation is adopted, please provide:*

*the effective date of the revaluation*

*the name of independent valuer, if applicable*

*the methods applied and significant assumptions*

*the carrying amount that would have been recognised had the assets been carried under the cost model.*


#### 14.6 Other disclosures

*(i) Please state the amount of borrowing costs, if any, capitalised in the construction of tangible fixed assets and the capitalisation rate used.*

*(ii) Please provide the amount of contractual commitments for the acquisition of tangible fixed assets.*

*(iii) Details of the existence and carrying amounts of property, plant and equipment to which the charity has restricted title or that are pledged as security for liabilities.*


\* The "transfers" row is for movements between fixed asset categories.

\*\* Please indicate the method of depreciation by deleting the method not

**Note 15 Intangible assets***Please complete this note if the charity has any intangible assets***15.1 Cost or valuation**

	Project development costs	Patents and trademarks	Other	Total
	£	£	£	£
At beginning of the year	-	-	-	-
Additions	-	-	-	-
Disposals	-	-	-	-
Revaluations	-	-	-	-
Transfers *	-	-	-	-
At end of the year	-	-	-	-

**15.2 Amortisation and impairments**

**Method of amortisation	SL or RB	SL or RB	SL or RB	SL or RB	Straight Line ("SL") or Reducing Balance ("RB")
** Rate					
At beginning of the year	-	-	-	-	-
Disposals	-	-	-	-	-
Amortisation	-	-	-	-	-
Impairment	-	-	-	-	-
Transfers*	-	-	-	-	-
At end of year	-	-	-	-	-

**15.3 Net book value**

Nat book value at the beginning of the year	-	-	-	-
Net book value at the end of the year	-	-	-	-

**15.4 Accounting policy***Please disclose the accounting policy for intangible fixed assets including:**Reasons for choosing amortisation rates**Policies for the recognition of any capital development*


**15.5 Impairment***Please provide a description of the events and circumstances that led to the recognition or reversal of an impairment loss.*




### 15.6 Revaluation

*If an accounting policy of revaluation is adopted, please provide:*

*the effective date of the revaluation*

*the name of independent valuer, if applicable*

*the methods applied*

*the carrying amount that would have been recognised had the assets been carried under the cost model.*


### 15.7 Other disclosures

*(i) If your intangible asset was acquired by way of grant, provide value on initial recognition and carrying amount of the asset.*

*(ii) Details of the carrying amounts of any intangible assets to which the charity has restricted title or that are pledged as security for liabilities.*

*(iii) Please provide the amount of contractual commitments for the acquisition of intangible assets.*

*(iv) State the amount of research and development expenditure recognised as expenditure in the year.*

*(v) Please detail the headings in the SOFA in which a charge for amortisation of intangible assets is included.*

*(vi) For any material intangible assets, please provide a description, its carrying amount and any remaining amortisation period.*


\* The "transfers" row is for movements between fixed asset categories.

\*\* Please indicate the method of depreciation by deleting the method not applicable (SL = straight line; RB = reducing balance). Also please indicate the rate of depreciation: for straight line, what is the anticipated life of the asset (in years); for reducing balance, what is the percentage annual

**Note 16 Heritage assets***Please complete this note if the charity has heritage assets***16.1 General disclosures for all charities holding heritage assets**

(i) Explain the nature and scale of heritage assets held.

(ii) Explain the policy for the acquisition, preservation, management and disposal of heritage assets.

**16.2 Cost or valuation**

	Heritage asset 1 £	Heritage asset 2 £	Heritage asset 3 £	Heritage asset 4 £	Total £
At beginning of the year	-	-	-	-	-
Additions	-	-	-	-	-
Disposals	-	-	-	-	-
Revaluations	-	-	-	-	-
Transfers *	-	-	-	-	-
At end of the year	-	-	-	-	-

**16.3 Depreciation and impairments**

<b>**Basis</b>	SL or RB	SL or RB	SL or RB	SL or RB	SL or RB	Straight Line ("SL") or Reducing Balance
<b>** Rate</b>						

At beginning of the year	-	-	-	-	-
Disposals	-	-	-	-	-
Depreciation	-	-	-	-	-
Impairment	-	-	-	-	-
Transfers*	-	-	-	-	-
At end of year	-	-	-	-	-

**16.4 Net book value**

Nat book value at the beginning of the year	-	-	-	-	-
Net book value at the end of the year	-	-	-	-	-

**16.5 Impairment***Please provide a description of the events and circumstances that led to the recognition or reversal of an impairment loss.*

--

**16.6 Revaluation***If an accounting policy of revaluation is adopted, please provide:**the effective date of the revaluation**the name of independent valuer, if applicable**qualifications of independent valuer**the methods applied and significant assumptions**any significant limitations on the valuation*


**16.7 Analysis of heritage assets by class or group distinguishing those at cost and those at valuation**

	At valuation Group A	At cost Group B	Total
	£	£	£
Carrying amount at the beginning of the period	-	-	-
Additions	-	-	-
Disposals	-	-	-
Depreciation/impairment	-	-	-
Revaluation	-	-	-
Carrying amount at the end of period	-	-	-

#### 16.8 Heritage assets (where heritage assets are not recognised on the balance sheet)

(i) Explain the reason why heritage assets have not been recognised on the balance sheet.

(ii) Describe the significance and nature of heritage assets.

(iii) Disclose information that is helpful in assessing the value of heritage assets.

(iv) Explain the reason why it is not practicable to obtain a valuation of heritage assets.


#### 16.9 Five year summary of heritage assets transactions

	2015	2014	2013	2012	2011
	£	£	£	£	£
<b>Purchases</b>					
Group A	-	-	-	-	-
Group B	-	-	-	-	-
Group C	-				
Other	-				
<b>Donations</b>					
Group A	-	-	-	-	-
Group B	-	-	-	-	-
Group C	-	-	-	-	-
Other	-	-	-	-	-
<b>Total additions</b>	-	-	-	-	-
<b>Charge for impairment</b>					
Group A	-	-	-	-	-
Group B	-	-	-	-	-
Group C	-	-	-	-	-
Other	-	-	-	-	-
<b>Total charge for impairment</b>	-	-	-	-	-
<b>Disposals</b>					
Group A - carrying amount	-	-	-	-	-
Group B - carrying amount	-	-	-	-	-
Group C	-	-	-	-	-
Other	-	-	-	-	-
<b>Total disposals</b>	-	-	-	-	-

**Note 17 Investment assets**

*Please complete this note if the charity has any investment assets.*

**17.1 Fixed assets investments (please provide for each class of investment)**

	Cash & cash equivalents	Listed investments	Investment properties	Social investments	Other	Total
Carrying (fair) value at beginning of period	-	-	-	-	-	-
<b>Add:</b> additions to investments during period*	-	-	-	-	-	-
<b>Less:</b> disposals at carrying value	-	-	-	-	-	-
<b>Less: impairments</b>	-	-	-	-	-	-
<b>Add: Reversal of impairments</b>	-	-	-	-	-	-
<b>Add/(deduct):</b> transfer in/(out) in the period	-	-	-	-	-	-
<b>Add/(deduct):</b> net gain/(loss) on revaluation	-	-	-	-	-	-
Carrying (fair) value at end of year	-	-	-	-	-	-

\*Please specify additions resulting from acquisitions through business combinations, if any.

*Please note that Fair Value in this context is the amount for which an asset could be exchanged between knowledgeable and willing parties in an arm's length transaction. For traded securities, the fair value is the value of the security quoted on the London Stock Exchange Daily Official List or equivalent. For other assets where there is no market price on a traded market, it is the trustees' or valuers' best estimate of fair value.*

**17.2 Please provide a breakdown of investments shown above agreeing with the balance sheet row B04 differentiating between those held at fair value and those held at cost less impairment.**

**Analysis of investments**

	Fair value at year end	Cost less impairment
	£	£
Cash or cash equivalents	-	-
Listed investments	-	-
Investment properties	-	-
Social investments	-	-
Other investments	-	-
<b>Total</b>	-	-
<b>Grand total (Fair value at year end+Cost less impairment)</b>		

**17.3 If your charity holds investment properties, please complete the following note:**

(i) Explain the methods and significant assumptions in determining the fair value of investment property held by the charity

(ii) Name or independent valuer, if applicable, and relevant qualifications

(iii) Provide details of any restrictions on the ability to realise investment property or on the remittance of income or disposal proceeds

(iv) Explain any contractual obligations for the purchase, construction or development of investment property or for repairs, maintenance or enhancements

17.4 Please provide a breakdown of current asset investments, if applicable, agreeing with the balance sheet.

**Analysis of current asset investments**

Cash or cash equivalents

Listed investments

Investment properties

Social investments

Other investments

Total

This year	Last year
£	£
-	-
-	-
-	-
-	-
-	-
-	-

**17.5 Guarantees**

Please provide details and amount of any guarantee made to or on behalf of a third party

Name of the entity or entities benefitting from those guarantees

Please explain how the guarantee furthers the charity's aims

**17.6 Concessionary loans**

Amount of concessionary loans made (*Multiple loans made may be disclosed in aggregate provided that such aggregation does not obscure significant information*).

Description	This year £	Last year £
<b>Total</b>		

Amount of concessionary loans received (*Multiple loans received may be disclosed in aggregate provided that such aggregation does not obscure significant information*).

Description	This year £	Last year £
<b>Total</b>		

Terms and conditions eg interest rate, security provided

Value of any concessionary loans which have been committed but not taken up at the reporting date

Amounts payable within 1 year

Amounts payable after more than 1 year

Amounts receivable within 1 year

Amounts receivable after more than 1 year

17.7 Additional information

Please provide information about the significance of investments to the charity's financial position or performance eg. terms and conditions of loans or the use of hedging to manage financial risk.

For all investments measured at fair value, the basis for determining the value, including any assumptions applied when using a valuation technique.

Where a charity or its subsidiary has provided financial assets as a form of security, the carrying amount of the financial asset pledged as security and the terms and conditions relating to its pledge.

## Section C

## Notes to the accounts

### Note 18

### Stocks

*Please complete this note if the charity holds any stock items*

**18.1** Please state the carrying amount of stock and work in progress analysed between activities.

#### Charitable activities:

*Opening*

*Added in period*

*Expensed in period*

*Impaired*

*Closing*

#### Other trading activities:

*Opening*

*Added in period*

*Expensed in period*

*Impaired*

*Closing*

#### Other:

*Opening*

*Added in period*

*Expensed in period*

*Impaired*

*Closing*

**Total this year**

**Total previous year**

Stock		Donated goods		Work in progress
For distribution	For resale	For distribution	For resale	
£	£	£	£	£
-	-	-	-	-
-	-	-	-	-
-	-	-	-	-
-	-	-	-	-
-	-	-	-	-
-	-	-	-	-
-	-	-	-	-
-	-	-	-	-
-	-	-	-	-
-	-	-	-	-
-	-	-	-	-
-	-	-	-	-
-	-	-	-	-
-	-	-	-	-
-	-	-	-	-
-	-	-	-	-

**18.2** Please specify the carrying amount of any stocks pledged as security for liabilities



**Section C****Notes to the accounts****(cont)****Note 19 Debtors and prepayments**

*Please complete this note if the charity has any debtors or prepayments.*

**19.1 Analysis of debtors**

	<b>This year £</b>	<b>Last year £</b>
Trade debtors	1,072	6,094
Prepayments and accrued income	-	-
Other debtors	-	-
<b>Total</b>	<b>1,072</b>	<b>6,094</b>

*Complete 19.2 where a material debtor is recoverable more than a year after the reporting date.*

**19.2 Disclosure of debtors recoverable in more than 1 year (included in debtors above)**

	<b>This year £</b>	<b>Last year £</b>
Trade debtors	-	-
Prepayments and accrued income	-	-
Other debtors	-	-
<b>Total</b>	<b>-</b>	<b>-</b>

Section C	Notes to the accounts	(cont)
-----------	-----------------------	--------

## Note 20 Creditors and accruals

*Please complete this note if the charity has any creditors or accruals.*

### 20.1 Analysis of creditors

	Amounts falling due within one year		Amounts falling due after more than one year	
	This year £	Last year £	This year £	Last year £
Accruals for grants payable	-	-	-	-
Bank loans and overdrafts	-	-	-	-
Trade creditors	-	-	-	-
Payments received on account for contracts or performance-related grants	-	-	-	-
Accruals and deferred income	-	-	-	-
Taxation and social security	-	-	-	-
Other creditors	-	-	-	-
<b>Total</b>	-	-	-	-

### 20.2 Deferred income

*Please complete this note if the charity has deferred income.*

*Please explain the reasons why income is deferred.*

#### *Movement in deferred income account*

Balance at the start of the reporting period

Amounts added in current period

Amounts released to income from previous periods

Balance at the end of the reporting period

This year £	Last year £
-	-
-	-
-	-
-	-

**Note 21 Provisions for liabilities and charges**

*You should complete this note if you have included in the charity expenditure any provisions. A provision is made when the charity has a liability of uncertain timing or amount.*

**21.1 Please provide:**

- a brief description of any obligations on the balance sheet and the expected amount and timing of resulting payments;
- an indication of the uncertainties about the amount or timing of those outflows; and
- the amount of any expected reimbursement, stating the amount of any asset that has been recognised for that expected reimbursement.


**21.2 Movements in recognised provisions and funding commitment during the period**

Balance at the start of the reporting period

Amounts added in current period

Amounts charged against the provision in the current period

Unused amounts reversed during the period

Balance at the end of the reporting period

This year £	Last year £
-	-
-	-
-	-
-	-
-	-

**21.3** For any funding commitment that is not recognised as a liability or provision, provide details of commitment made, the time frame of that commitment, any performance-related conditions and details of how the commitment will be funded (with contracts for capital expenditure separately identified)..

--

**21.4** Where unrestricted funds have been designated to a fund commitment, please disclose the nature of any amounts designated and the likely timing of that expenditure.

--

**Note 22 Other disclosures for debtors, creditors and other basic financial instruments**

**22.1 Please provide information about the significance of financial instruments (eg. debtors, creditors, investments etc) to the charity's financial position or performance, for example, the terms and conditions of loans or the use of hedging to manage financial risk.**

**22.2 If the charity has provided financial assets as a form of security, the carrying amount of the financial assets pledged as security and the terms and conditions related to its pledge should be given here.**


**Note 23 Contingent liabilities and contingent assets****23.1 Contingent liabilities**

Where the charity has contingent liabilities, please complete the following section unless the possibility of their existence is remote.

Description of item including its legal nature. Please describe any security provided in connection to the liability.	Estimate of financial effect

**23.2 Contingent assets**

Where the charity has contingent assets, please complete the following section when their existence is probable

Description of item	Estimate of financial effect

**23.3 Other disclosures for contingent assets and/or liabilities**

Please provide the following information where practicable:

Explain any uncertainties relating to the amount or timing of settlement; and the possibility of any reimbursement

Where it is not practical to make one or more of these disclosures, please state this fact


**Section C****Notes to the accounts****(cont)****Note 24 Cash at bank and in hand****Short term cash investments (less than 3 months maturity date)****Short term deposits****Cash at bank and on hand****Other****Total**

<b>This year £</b>	<b>Last year £</b>
-	-
-	-
6,673	16,426
-	-
6,673	16,426

**Note 25 Fair value of assets and liabilities**

**25.1** Please provide details of the charity's exposure to credit risk (the risk of incurring a loss due to a debtor not paying what is owed) , liquidity risk (the risk of not being able to meet short term financial demands) and market risk (the risk that the value of an investment will fall due to changes in the market) arising from financial instruments to which the charity is exposed at the end of the reporting period and explain how the charity manages those risks.

**25.2** Please give details of the amount of change in the fair value of basic financial instruments (debtors, creditors, investments (see section 11, FRS102 SORP)) measured at fair value through the SoFA that is attributable to changes in credit risk.



**Section C****Notes to the accounts****(cont)****Note 26**                      **Events after the end of the reporting period**

*Please complete this note where events (not requiring adjustment to the accounts) have occurred after the end of the reporting period but before the accounts are authorised which relate to conditions that arose after the end of the reporting period.*

**Please provide details of the nature of the event**

--

**Provide an estimate of the financial effect of the event or a statement that such an estimate cannot be made**

--

## Section C

## Notes to the accounts

(cont)

## Note 27

## Charity funds

## 27.1 Details of material funds held and movements during the CURRENT reporting period

Please give details of the movements of material individual funds in the reporting period together with a balancing figure for 'Other funds' (which should include revaluation reserve and fair value reserve, if applicable). The 'Total funds' figure below should reconcile to 'Total funds' in the balance sheet.

\* Key: PE - permanent endowment funds; EE - expendable endowment funds; R - restricted income funds, including special trusts, of the charity; and U - unrestricted funds

Fund names	Type PE, EE R or UR *	Purpose and Restrictions	Fund balances brought forward £	Income £	Expenditure £	Transfers £	Gains and losses £	Fund balances carried forward £
Visit	R	To fund visits to and from Tanzania	-	1,000	- 1,000		-	-
Health Centre	R	Building and funding of new Health Centre	195	4,627	- 4,900		-	- 78
Education	R	Support education of individuals in Tanzani	638	2,010	- 2,620		-	28
Tazama na Tunza	R	To pay for health care					-	-
General	U	General	6,171	13,078	- 12,924	3	-	6,328
Child Sponsorship	R	To support children in the nursery school	4	1,195	- 1,180		-	19
COVID-19	R	To support people in Tanzania during COVID-19	3			- 3	-	-
Future Vision	R	Currently being used for funds to build a health centre in Nduli	15,507	36,945	- 51,304	-	-	1,148
			-	-	-	-	-	-
<b>Other funds (balancing figure)</b>	<b>N/a</b>	<b>N/a</b>	-	-	-	-	-	-
<b>Total Funds as per balance sheet</b>			<b>22,518</b>	<b>58,855</b>	<b>- 73,928</b>	<b>-</b>	<b>-</b>	<b>7,445</b>

Fund balances carried forward include assets and liabilities denominated in a foreign currency

Yes*	No*
<input type="checkbox"/>	<input checked="" type="checkbox"/>

<p><i>If yes, please state the basis on which the assets and/or liabilities have been translated into sterling (or the currency in which the accounts are drawn up).</i></p>	
--	--

Section C	Notes to the accounts	(cont)
-----------	-----------------------	--------

**Note 27**                      **Charity funds**

**27.2 Details of material funds held and movements during the PREVIOUS reporting period**

*Please give details of the movements of material individual funds in the reporting period together with a balancing figure for 'Other funds' (which should include revaluation reserve and fair value reserve, if applicable). The 'Total funds' figure below should reconcile to 'Total funds' in the balance sheet.*

*\* Key: PE - permanent endowment funds; EE - expendable endowment funds; R - restricted income funds, including special trusts, of the charity; and U - unrestricted funds*

Fund names	Type PE, EE R or UR *	Purpose and Restrictions	Fund balances brought forward £	Income £	Expenditure £	Transfers £	Gains and losses £	Fund balances carried forward £
Visit	R	To fund visits to and from Tanzania	3,946	7,421	- 11,369		-	2
Health Centre	R	Building and funding of new Health Centre	180	5,615	- 5,600		-	195
Education	R	Support education of individuals in Tanzani	528	4,510	- 4,400		-	638
Tazama na Tunza	R	To pay for health care	1				-	1
General	U	General	4,446	13,994	- 12,269		-	6,171
Child Sponsorship	R	To support children in the nursery school	1,892	644	- 2,532		-	4
COVID-19	R	To support people in Tanzania during COVID-19	3				-	3
Future Vision	R	Currently used to fund the building of a health Centre in Nduli	1,250	43,122	- 28,865	-	-	15,507
			-	-	-	-	-	-
<b>figure)</b>	<b>N/a</b>	<b>N/a</b>	-	-	-	-	-	-
<b>Other funds (balancing figure)</b>	<b>N/a</b>	<b>N/a</b>	-	-	-	-	-	-
<b>Total Funds as per balance sheet</b>			<b>12,246</b>	<b>75,306</b>	<b>- 65,035</b>	<b>-</b>	<b>-</b>	<b>22,517</b>

Fund balances carried forward include assets and liabilities denominated in a foreign currency

Yes*	No*
<input type="checkbox"/>	<input checked="" type="checkbox"/>

<b>Section C</b>	<b>Notes to the accounts</b>	<b>(cont)</b>
------------------	------------------------------	---------------

**Note 27**                      **Charity funds (cont)**

**27.3 Transfers between funds**

	Reason for transfer and where endowment is converted to income, legal power for its conversion	Amount
Between unrestricted and restricted funds		
Between restricted funds		
Between restricted and restricted funds		
Between endowment and unrestricted funds		

**27.4 Designated funds**

Planned use	Purpose of the designation	Amount

**Note 28 Transactions with trustees and related parties**

*If the charity has any transactions with related parties (other than the trustee expenses explained in guidance notes) details of such transactions should be provided in this note. If there are no transactions to report, please enter "True" in the box or "False" if there are transactions to report.*

**28.1 Trustee remuneration and benefits**

None of the trustees have been paid any remuneration or received any other benefits from an employment with their charity or a related entity (True or False)

TRUE

*In the period the charity has paid trustees remuneration and benefits. Please give the amount of, and legal authority for, any remuneration or other benefits paid to a trustee by the charity or any institution or company connected with it.*

Name of trustee	Legal authority (eg order, governing document)	Amounts paid or benefit value					Last year
		This year					
		Remuneration	Pension contribution	Redundancy (including loss of office)/ex gratia	Other	TOTAL	
		£	£	£	£	£	£

*Please give details of why remuneration or other employment benefits were paid.*

*Where an ex gratia payment has been made to a trustee, provide an explanation of the nature of the payment.*

*If a third party has been reimbursed for providing one or more trustees, state the nature of the payment and amount of the reimbursement.*

*State the number of trustees to whom retirement benefits are accruing under a defined contribution pension scheme.*

**28.2 Trustees' expenses**

*If the charity has paid trustees expenses for fulfilling their duties, details of such transactions should be provided in this note. If there are no transactions to report, please enter "True" in the box below. If there are transactions to report, please enter "False".*

No trustee expenses have been incurred (True or False)

TRUE

Type of expenses reimbursed	This year	Last year
	£	£
Travel		
Subsistence		
Accommodation		
Other (please specify):		
<b>TOTAL</b>		

Please provide the number of trustees reimbursed for expenses or who had expenses paid by the charity

28.3 Transaction(s) with related parties

Please give details of any transaction undertaken by (or on behalf of) the charity in which a related party has a material interest, including where funds have been held as agent for related parties. If there are no such transactions, please enter 'true' in the box provided.

There have been no related party transactions in the reporting period (True or False)

TRUE

Name of the trustee or related party	Relationship to charity	Description of the transaction(s)	Amount		Balance at period end	Provision for bad debts at period end	Amounts written off during reporting period
			£		£	£	£

In relation to the transactions above, please provide the terms and conditions, including any security and the nature of any payment (consideration) to be provided in settlement.

For any related party, please provide details of any guarantees given or received.

<b>Note 29</b>	<b>Additional Disclosures</b>
----------------	-------------------------------

The following are significant matters which are not covered in other notes and need to be included to provide a proper understanding of the accounts. If there is insufficient room here, please add a separate sheet.

Registered Charity No: 1133490



## **ANNUAL REPORT for the year ended March 31<sup>st</sup> 2023**

### **1. Reference and Administrative Details**

- Tanzania (UK) Trust
  - Registration number 1133490
  - Address: 6a Carrhouse Lane, Hollingworth, Hyde, Cheshire SK14 8NA
  - Our present Trustees are:
    - Ruth Chorley (chairperson)
    - Chris Neilson
    - Alan Smith
    - Jim Solomon
- Elizabeth Benstead is our Treasurer.

### **2. Structure, Governance and Management**

- Registered Charity 08/01/2010
- Tanzania (UK) Trust is a registered charity, number 1133490, and is constituted under a trust deed (Declaration of Trust) dated 9<sup>th</sup> November 2009.
- Recruitment and appointment of Trustees: potential trustees offer their skills, knowledge and experience to the Trust and these are assessed by the current Trustees before acceptance. The Declaration of Trust and copy of the latest Tanzania (UK) Trust report and Statement of Accounts are made available to the Trustees, along with all Policies, Procedures and Risk Assessments.
- As a Charity we have Insurance cover under Ansvar with a "Certificate of Employers, Liability Insurance".
- Regular meetings are minuted and held approximately quarterly, and decisions are subject to a majority vote from a quorum.

### **3. Objectives and Activities**

*"A well of hope in a thirsty land"*

- The Tanzania (UK) Trust applies the income of the charity in furthering within Tanzania: the advancement of the Christian faith, promotion and protection of physical and mental health, and advancement of education.
- The Tanzania (UK) Trust's main activities/strategies for meeting these objectives are:
  - Fundraising from individuals, events and organisations, to meet the objectives of the Trust;
  - Raising awareness of the Trust and its objectives;



- Partnering with the church in Dodoma, Tanzania, in meeting the Trust's objectives.

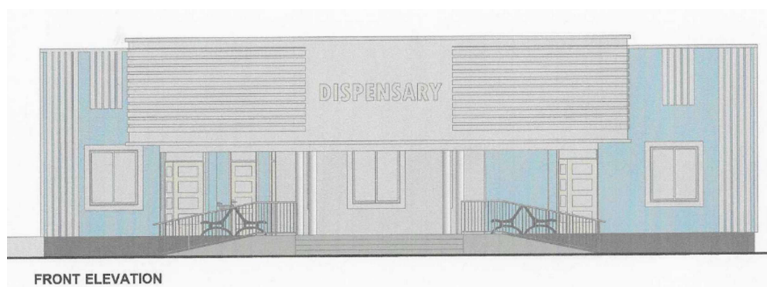
#### 4. Public Benefit Statement

The Tanzania (UK) Trust Trustees have complied with our duty to have due regard to guidance on public benefit published by the Commission in exercising our powers and duties.

#### 5. Achievements and Performance

##### Fundraising

- Fund raising has been more focused on future vision this year as the Trustees thought through the request to join with the TAG Church in building a health centre at Nduli. After 9 months (March-November 2022) of contemplation and prayer, we were in agreement to start building. We have looked at ways of reducing the cost, despite the economic crisis in Tanzania, where prices are doubling. We have been blessed with a lot of professionals and volunteers giving their time voluntarily to build the Health Centre. The plot we are building on had been allocated for a Health Centre 22 years ago: they were waiting for someone to have faith / resources to build!



- We continue to financially support the Tazama na Tunza Health Centre on a reducing scale aiming at self-sustainability by 2023-24. One-off gifts have also been made to Wisdom School, CCC Church and individuals in need.

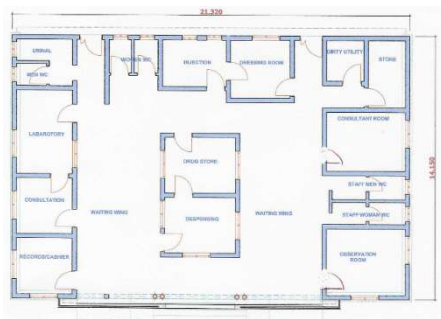
These donations came from Churches, individuals and links with St James's school in Glossop as well as fund-raising activities such as an Evening Dinner Party, a Sponsored Half Marathon and a Garden Tea Party. All unspecified donations go into the future vision fund. The Tazama na Tunza Dispensary (Health Centre) is now 5 years old and specialises in reaching the poor with chronic health conditions. The Health Centre belongs to the Church, and we continue to support them with training and equipping. The Mamas Unit we built annexed to the Health Centre, is very popular. It still awaits a Government fridge for vaccinations, which are presently bicycled in from a neighboring center, daily.



- Specific monthly support for individuals as needs arise: We sponsor families with their education and have started, in a small way, to support children attending the Church Wisdom School who have no financial support. Where needed we also support volunteer medical staff and patients reached by the Tazama na Tunza volunteer team.
- The Dodoma Church outreach to unreached areas. We have supported this since our inauguration, amounting to £420 a month. This is from on-going donations from individuals and churches.
- We continue linking with 2 UK pastors who visit and support Bible Gospel Teaching to pastors in the Mbeya region of Tanzania and who send money out for this work.
- We have asked the Funded Team to provide us with grant matches to other charities or organisations and we are going to put in funded bids.
- We have regular support from churches to cover the general work of the Trust. We thank God that every month we have had enough money to send out to cover the work we are involved with in Tanzania. This is an on-going miracle.
- We review our method of transferring funds to Tanzania, and are happy that they are secure, transparent and timely, and we have an independent inspection of our accounts annually.
- We are covered by an Indemnity Insurance Policy with Ansvar.

### Trip to Tanzania March 2023

To build partnership, the UK Trust exchanges trips with the Church in Dodoma, Tanzania. This year a Doctor, 2 Nurses, a Vicar and an Administrator visited Tanzania. We spent some time at Nduli village where we taught First Aid to the local TAG School teachers and Church and prayed over the site of the new Health Centre where the foundations had been started.



We also spent time with the Tazama na Tunza Dispensary in Dodoma, where we encouraged them with their vision to reach the poorest in the community with chronic health care needs and also spent a week-end updating the medical team. The Tazama na Tunza Dispensary, managed by the Church is offering trustworthy

assessments, diagnoses and treatments and keeps the vision of focusing on the poor in the community. Especially good to see were the team-working across all the roles in the Health Centre and with the House of Prayer.



We encouraged the Church by spending time with the Church School, the Mamas and the Babas, The Tazama na Tunza Health Volunteers, Mission pastors, as well as in the House of Prayer encouraging ourselves in God's goodness! The Archbishop of Tanzania Assemblies of God Church, Barnabas, also encouraged us to enlarge our vision.



### The Health Centre: Tazama na Tunza Dispensary

The Tazama na Tunza Dispensary is the mutual vision of the community, church and our charity to meet the needs of those chronically sick in the community. Capital Christian Centre owns and runs the TTD: the Trust's role is to facilitate the work. The business plan is in step with the vision to reach the local community, especially the poorest and to offer them trust-worthy tests, diagnosis, treatment and medication that is affordable to the poorer in the community. (All healthcare, whether private or government run, has to be paid for on contact, by the patient in Tanzania - excluding childhood immunizations, maternity care, TB and HIV treatment).

The Health Centre is progressing well towards being self-sustainable and our donation to them monthly is reducing from £600 to £100. The Church has set up a Pharmacy in town to help fund the Health Centre, which reaches to the poorest in the community.







We offer community health teaching monthly followed by free Doctor visits and testing. Unlike UK, most conditions seen are still infections and so need tests. The staff are 3 Doctors, 3 Nurse/Midwives, 3 laboratory Technicians, 2 Pharmacists, 2 Receptionists and 1 cleaner as well as a Radiologist (voluntary) for the scanner. The Health Centre overseen by a manager and is now open 8am to 10pm. Sundays remain a day of rest.

We work with the Church in holistic care and offer prayer for any patients who need it. Patient numbers continue to increase varying from 40 – 100+ a day (this is seasonal) and the Mamas Unit is very popular with 70-100 attending for check-ups, immunisations and advice.

Communications between the Trust and TTD have been strong, effective and trustworthy. Communications between TTD and the local community, churches, schools, Compassion groups, and Public Health have developed strong links. The TTD building remains very clean and very welcoming.

The footfall is seasonal and costs have increased due to the cost-of-living post-pandemic and with the world financial crisis. The cost of energy, services, fuel, all laboratory equipment and solutions and all medications etc. has risen twofold, especially those items that are imported. The custom that we continue to challenge is that in Tanzania people generally only seek medical help when it is an emergency, so they go to the hospital and pay high hospital fees there, when they are acutely ill. Our aim continues to be that people come to see us with earlier symptoms or chronic conditions so that they can be treated more effectively earlier and live normal lives in the community.

We continue working with Health Insurance groups as well, where working patients are covered by health insurance. The Greycare Computer System has been very efficient, reliable and effective at storing patient information clearly and confidentially and also recording the business functions of TTD. We installed fiber for better Internet access needed for health insurance card use.

The Church provides oversight regarding management and finance and Pastor Zephaniah is in overall control and is very pro-active at understanding how to move forward with health in the community. Our choice of staff was for those who were both clinically good and also Christians of good character. The staff are now on 3 year contracts with a national graded wage, and newcomers usually volunteer, are assessed and then may progress to being contracted. Some of the local schools, colleges and Compassion children's groups have named TTD as their Health Provider.

On our visit in March the outstanding features of the Health Centre were that it is trust-worthy and built on trust, their team-working is exceptionally good, they manage A&E type incidents very well and the Centre is very clean!

### Memorandum of Understanding

The Memorandum of Understanding between the Trust and the Tanzania Assemblies of God Church (which the Dodoma Capital Christian Church belongs to) gives clarity and guidelines to how we work in partnership, on-going. We met with the Archbishop and his team in March and have updated the Memorandum. He has challenged us to enlarge our vision!



### Policies

The policies and risk assessments are in place and have been updated including the working partnership policy for the Health Centre, Tazama na Tunza Guidelines and all risk assessments. Our Tanzanian partners asked that we only invite Christians to stay with them on our trips, because of the sensitive politics and faith issues that arise there, and we are complying with their wishes. We work with CCPAS regarding safeguarding policies and individual DBS checks. We also have a Use of Visual Images agreement with the Dodoma church. The General Data Protection Regulations compliance and Privacy Policy has now also been in place since May 2018.

## **6. Addressing the Objectives**

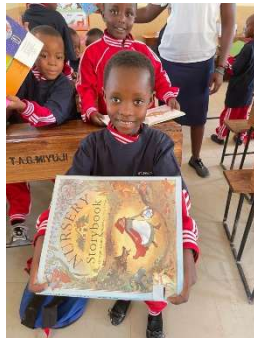
### Health Promotion

- **Advocacy**: Our group volunteer trip to Tanzania went exceptionally well, building partnership and understanding of their health needs, updating and equipping them in order to meet the needs of the poor who are chronically sick in the community and for it to be a sustainable model of excellent trustworthy diagnosis, tests, medication and care in Tanzania. We are also building partnership and a new Health Centre in Nduli to duplicate this model there, God willing.
- **Information**: Our website [www.tanzaniauk.org.uk](http://www.tanzaniauk.org.uk) is being updated by a professional and so will be fit for purpose in the next month. Seven newsletters were circulated through our growing contact list in the UK to publicise the work of the Trust, as well as regular WhatsApp information sharing. We have started a small Facebook site. We are updating our publicity fliers. We gave talks to local churches and schools.
- **Resource**: The Health Centre meets the needs of the health of the local community, and this has been our most recent major objective. This is why we are building a second one in Nduli. We also provided Swahili teaching

materials to the TTD staff, the Tazama na Tunza volunteers and the Nduli Church and Teachers. These can also be given to the patients. TTD should become self-sustainable and we continue to decrease the regular donations until the Charity becomes a resource for emergencies or new equipment only. This will allow capacity for the Nduli Health Centre, God willing. The Dodoma Church are already providing support for the Health Centre in the present world financial crisis, by profits donated from a city pharmacy.

### Relief of Poverty

- **Advocacy**: ongoing financial support for the advancement of the Christian faith in Tanzania by the church – to unreached areas. We are also partnering with St James's School, Glossop to build relations with Wisdom School, Dodoma. Wisdom School came in the top 10 in regional exams!



- **Information**: The Trust gains more understanding as our partnership grows, of the reasons for and effect of poverty on everyday life of the Dodoma community and how we can effectively work with them. The fact that Dodoma has become the capital city of Tanzania, does not affect the poor community we serve – only to accentuate the relative poverty of the area. As we adopt the Nduli vision, rural poverty will also be addressed.
- **Resource**: The Health Centres for those who are ill in the community to come for low-cost trustworthy diagnosis, tests and treatment. Maintenance of the well for safe water, next to TTD, on church grounds. We support Wisdom School - as Compassion's strategy for support has changed.

The issue of national price rises across every commodity in Tanzania, as the International Financial Crisis deepens in poorer countries. This means that we need to be more open to where the needs are, and to be available to give some financial relief to those we are already involved with.

### Christian Activities

- **Advocacy**: regular prayer of individuals, Trustees and churches along with open communications and sharing of strengths and resources. We are linked with two pastors in UK who are supporting Church Leaders in the Mbeya region to teach the gospel message from a Bible teaching perspective.
- **Information**: mutual sharing of information for praise, prayer and developing churches. Pastor Zephaniah is now the National Director of Youth (Christian Ambassadors) for the whole of Tanzania (Mkurugenzi Mkuu wa idara ya CA) as

well as National Co-Ordinator of the Pastor's Children's Fellowship. This does not include a wage increase. So as our Charity partner, we need to pray for and support him as well as his Church and the TAG and wider Church in Tanzania.



- Resource: regular monthly giving for pastors to plant churches and conduct missions. Also support where needed within the partnership, with money raised.

## 7. Future Plans

- Support for the Health Centre: Tazama na Tunza Dispensary to become self-sustaining. This is in process, though the economic climate is difficult presently. To train, equip and update the staff and encourage best practice through following the Tanzanian Medical Protocols and gold standard guidelines. We thank God that we are gaining a good reputation for our modern, trustworthy care. Our vision continues to be for the Health Centre to be a centre for excellence in Chronic Health Care in the community and region, which the poorest people can access equally with others. We pray on for the Government Fridge for the Mamas Unit! Our vision is that the Mamas Unit will be increasingly used by the community and save some of the 524 pregnant mothers in 100,000 in Tanzania who die in childbirth (compared to 9 in UK). This service will also care for the HIV patients in the community.
- Build the Nduli Health Centre: As this report is being written, the Nduli Health Centre is being built. We thank God for the amazing way that He has provided money this far: it is miraculous. We plan that this Health Centre will be run on the same model as Dodoma, allowing for rural differences, meeting the needs of the poor in the community.
- Support the Church Wisdom School, as Compassion support has changed and build partnership with St James's School, Glossop. Plan to build a UK school partnership with Ebenezer Church School in Nduli.
- Health promotion: For on-going training, advocacy and resourcing for the Health Centre staff, volunteers and reaching out into the community and rural villages in their own language and culture.
- Continue the Vision Mission of reading glasses for those who can no longer read in Tanzania due to increasing age or reducing sight.



- Young People: We aim to envision, equip, and mobilise more young people to participate in the work of the Trust in UK. Our 2020 trip to Tanzania was cancelled due to the Pandemic, and we are actively looking at how to extend our volunteers in younger age groups here in UK.
- Continue regular prayer support: in partnership with the Capital Christian Centre Church, and TAG, for the work.
- To develop the Trust's WhatsApp group, Facebook site and Website as a form of communication. We are also looking at other social media where our work can be presented and the Trust's objectives met.
- Proactively seek opportunities to present the work of the Trust to new audiences. There is a planned trip for Pastor Zephaniah Mkuyu and the Lead Doctor and Pharmacist from the Dodoma Health Centre to come to visit UK in May 2023. This will enable us to spread the vision of the Charity to other Churches, schools, organisations and individuals. The agenda for the trip involves many speaking engagements as well as medical experience for the Doctor and Pharmacist

## 8. Long-term plans

- **Complete the building of the Nduli Health Centre and employ trustworthy staff to carry on the vision of reaching the poor with good health care and God's love.** This is already being empowered by God.



- For the **Tazama na Tunza Dispensary** to be self-sustaining financially and to encourage it to continue to be a model of excellence focusing on meeting the health needs of the poor in the community and knowing God's love for them. For the TTD doctors to be skilled in examination and diagnosis, with support from UK sharing best practice. For the volunteers to remain actively seeking those in need in the community, to share health promotion and God's love with them.
- **To maintain the holistic care that TTD offers and Nduli will offer, in giving patients physical, mental, emotional, social and spiritual support to move forwards positively in life and as a community, involving the House of Prayer. Health working hand in hand with Mission.**
- Broaden our UK base of prayer and financial support, especially with the youth.



- Seek ways of providing a safe water supply in local rural communities, in discussion with Water Aid or other recognized charities or government agencies. The Tazama na Tunza Dispensary's water comes from the well we drilled in 1993.
- Find ways of providing start-up support for identified beneficiaries to set up income-providing self-sustainable projects to reduce their poverty and meet their needs.

#### 9. Financial Review

- The Statement of Accounts for this period has been independently examined and is attached;
- We hold in reserve the equivalent of three months' support for our partners in Tanzania (currently £2,000). This is in case of an emergency situation either with the donors or the recipients of support from the charity;
- At present our funds are not in deficit.

We hereby declare that the Trustees have approved the above Report, and have authorised us to sign it on their behalf.

Signed: Ruben Chorley (Chairperson)

[Signature] (Secretary)

Date: 6/10/2024