

**DURHAM & DEERNESS VALLEY CIRCUIT  
OF THE METHODIST CHURCH**

**ANNUAL REPORT AND ACCOUNTS  
FOR THE YEAR ENDED  
31<sup>ST</sup> AUGUST 2025**

**REGISTERED CHARITY**

**1132827**

**ROBSON LAIDLER ACCOUNTANTS LIMITED**

**Mains House  
143 Front Street  
Chester-le-Street  
County Durham DH3 3AU**

**DURHAM & DEERNESS VALLEY CIRCUIT  
OF THE METHODIST CHURCH**

**INDEX TO THE FINANCIAL STATEMENTS  
FOR THE YEAR ENDED 31<sup>ST</sup> AUGUST 2025**

	Pages
Legal & Administrative Information	2 – 4
Report of the Trustees	5 – 8
Report of the Independent Examiner's	9
Standard Form of Accounts	10 -14

## DURHAM & DEERNESS VALLEY CIRCUIT OF THE METHODIST CHURCH

### LEGAL AND ADMINISTRATIVE INFORMATION

#### **Status, Structure and Purpose**

The Governing Instrument of the Circuit is contained in the Methodist Church Act 1976 (Schedule 2) and is detailed in volume 2 of the Constitutional Practice and Discipline of the Methodist Church (Part 1 Deed of Union and Part 2 Model Trusts).

The Methodist Church is organised as a Connexion which is divided into Districts which, in turn, are sub-divided into Circuits. Each Circuit is made up of a group of Churches.

The Durham and Deerness Valley Methodist Circuit comprises 5 churches (with 9 buildings, two services in community owned buildings and about 440 members). It is responsible for payment of stipends and associated costs to ministers and lay workers and also provision of manse to accommodate 3.0 ministers. Two part time staff, one supernumerary and a PHD student. The Supernumerary minister is complimenting the Superintendent's role while he acts as District Chair this year. The PHD student is serving as a .49 worker in a section that can afford this percentage of a minister. The funding of the Circuit is provided by the churches. Indeed the first charge on the general fund of each church is the sum required to fund the Circuit. In a similar way the Circuit is levied for District and Methodist Church funds. The churches of a Circuit are charities in their own right.

The Circuit is the primary unit in which local churches express and experience their interconnexion in the Body of Christ, for purposes of mission, mutual encouragement and help. It is in the Circuit that ministers, deacons and probationers are stationed and local preachers are trained and admitted and exercise their calling. The purposes of the Circuit include the effective deployment of the resources of ministry, which include people, property and finance, as they relate to the Methodist churches in the Circuit, to churches of other denominations and to participation in the life of the communities served by the Circuit and in ecumenical work in the area including, where appropriate, the support of ecumenical Housing Associations. Since every member in the Circuit is as such a member of the Methodist Missionary Society, the purposes of the Circuit include the promotion of understanding of the work of the Society to the end that every member may share in world mission.

The Circuit is a public benefit entity. The trustees have had regard to the Charity Commission's guidance on public benefit.

#### **Principal Address:**

Circuit Office  
Elvet Methodist Church  
8 Old Elvet  
Durham  
DH1 3HL

#### **Independent Examiner:**

Robson Laidler Accountants Limited  
Mains House  
Chester-le-Street  
County Durham DH3 3AU

#### **Solicitors:**

Swinburne Maddison  
Venture House  
Ayckley Heads Business Centre  
Ayckley Heads  
Durham  
DH1 5TS

#### **Clearing Bank:**

Lloyds TSB Bank plc  
6 Market Place  
Durham DH1 3NB

## DURHAM & DEERNESS VALLEY CIRCUIT OF THE METHODIST CHURCH

### LEGAL AND ADMINISTRATIVE INFORMATION

#### Trustees

In accordance with Methodist Conference requirements the following Trustees were appointed for the period 1st September 2024 to 31st August 2025

<b>Ex-officio</b>	<b>Stationed or Appointed to the Circuit by the Methodist Conference</b>
	Rev John Squares MDiv, BA (Circuit Superintendent)
	Rev Colin Jackson MA, BSc, CTM
	Deacon Ruth Lackenby BSC, PGCE, DTM
	Rev Graham Peaden (WA)
	Rev. Susan Wigham

#### **Anglican Ministers authorised to serve by the Methodist Church**

Rev Joanne Thorns  
Rev Canon Caroline Dick

#### **Appointed by Circuit Meeting**

Four Circuit Stewards:	Paul Harrison (treasurer)
	Penny Bissell (staffing)
	John Fairbairn (property)
	Sue Harrison ( Eco Champion)
Circuit Meeting Secretary:	Susan Smith
Local Preachers' Meeting Secretary:	William Offler

#### **Additional persons elected by the Circuit Meeting**

Circuit Finance Officer:	Peter Templer
Connexional Funds Treasurer:	Malcolm Wadge
Methodist Homes:	vacant
Circuit Missions Officer	vacant
Network:	vacant
JMA Secretary:	vacant
Action for Children Secretary:	vacant
Missions Secretary:	vacant
Quinquennial Inspections Secretary:	John Fairbairn
Temporary Property Steward	Maureen Howatt
Youth Work:	
Local Preachers:	Francis Proud, Margaret Wadge and Mark Wilson

**DURHAM & DEERNESS VALLEY CIRCUIT  
OF THE METHODIST CHURCH**

**Appointed by each of the 5 Local Churches**

ONE Church Treasurer and ONE Church Steward.

Durham City Methodists	H Philips
All Saints Newton Hall LLP	A Cross
Durham North Methodists	M Wadge, S Pope
Durham Valley Methodists	P Hall, G Henderson
Durham City East Methodists	P Roberts, C Lowrie.

**Other Representatives**

ONE for each 50 members of each church or part thereof

## DURHAM & DEERNESS VALLEY CIRCUIT OF THE METHODIST CHURCH

### REPORT OF THE TRUSTEES FOR THE YEAR ENDED 31ST AUGUST 2025

#### Part 1 - Financial Matters

##### Statement of Trustees' responsibilities

Under the Trust Deed and legislation relating to Charities in England, the Trustees are required to prepare accounts for each financial year which show a true and fair view of the state of affairs of the Trust and of the surplus or deficit for that year and which have been properly prepared from and are in agreement with the accounting records of the Trust and comply with relevant disclosure regulations. For the purpose of this all ex-officio and appointed members of the Circuit Meeting are Trustees.

In preparing those accounts, the Trustees are required to:

- \* select suitable accounting policies and apply them consistently
- \* make judgements and estimates that are reasonable and prudent
- \* follow applicable accounting standards, subject to any material departures disclosed and explained in the accounts, and
- \* prepare the accounts on the going concern basis unless it is inappropriate to presume that the Trust will continue its activities.

The Trustees are required to act in accordance with the Trust Deed of the charity, within the framework of the Trust Law. They are responsible for keeping proper accounting records which disclose with reasonable accuracy at any time the financial position of the charity and so enable them to ensure that the accounts comply with the requirements of the Charities Act 2011. They have general responsibility for taking such steps as are reasonably open to them to safeguard the assets of the charity and to prevent and detect fraud and other irregularities.

##### Risk review

The major risks to which the charity is exposed arise from a reducing membership, increased running costs and heavier workloads falling on fewer and fewer shoulders. We are developing plans to reverse this trend and increase membership. District wide policy is that we work to ensure every church is growing in ten years' time. Our Circuit may have a different shape with a different number of churches in a decade, but we will be working to mitigate the expressed risk and fitting into the District vision. The District has recently adopted a Risk Register and the Circuit will endeavor to use this model to fashion a more detailed understanding of risk

##### Reserves policy

Reserves should not be allowed to fall below a fixed amount whose value would be reviewed annually. This year the minimum reserve was fixed at £125,000. If funds fall below this figure the shortfall shall be made good by the Churches of the Circuit.

##### Financial Review

The results for the year show an increase in Unrestricted Funds of £56,406 (2024 – increase £3,417), in unrestricted funds), but this included a transfer from Restricted Funds of £50,000.

The remaining churches to be sold Langley Park and Witton Gilbert; were sold in 2025 – net proceeds were £90,297.

The Circuit now has three (ex manse) properties which are being rented out. This year we have made a net profit on the 3 houses of £27.9k.

Unrestricted funds closed the year on £280,037 Restricted funds have increased to £588,032.

The Circuit has sufficient cash in its unrestricted fund (£280,037 together with the expected Church assessments of £177,368) to meet the next year's expenditure.

We intend to monitor the situation regularly asking churches working together in four separate groupings to develop business plans. In simplest form the groupings need to add up the assessments from each church in the group together and discuss how we might use our resources to achieve collecting that total requirement.

## DURHAM & DEERNESS VALLEY CIRCUIT OF THE METHODIST CHURCH

### REPORT OF THE TRUSTEES FOR THE YEAR ENDED 31ST AUGUST 2025

#### **Part 2 – Review of the year's work**

##### **Circuit Vision Statement**

The Durham and Deerness Valley Circuit of the Methodist Church seeks to be a close union of its individual Churches. Everyone connected with an individual Church should expect to feel that they are an important part of the Circuit family, and can expect the support of this family. Through our common faith in Christ we seek, in prayerful action, to share and spread the love of Jesus throughout the local and wider community.

##### **Significant Developments during the Year**

Durham City Methodists, Durham North Methodists, Durham City East Methodists and the Deerness Valley Methodists have been working as four churches on nine sites for some time. We also have an active Local Ecumenical church in Newton Hall. The City Centre churches have conducted a thorough review of their two properties and are seeking ways forward that allows one of them to be chosen for church purposes and the other let under a management lease or sold. Our depleting resource is the capacity to do all of the jobs required to manage the two sites. Newton Hall is in the last year of having its Anglican leader and priest. Our District Chair became President of Conference this year so our Superintendent inherited half of his District role. We have compensated by bringing in a reliable and wise retired minister to serve our City Centre pastorally. There is reason to celebrate the changes the churches have made, an increase in the number of people worshipping at any given service, creative decision making that has enabled the new churches to govern in a more streamlined way and hope about planting future ministries in the communities we serve, there are still structural worries to our system that have existed since we last reported. We still face many tired leaders have seen consolidation as a chance to sit down from service and though it is quite fine, the changes have not made it much easier to recruit the volume of leaders needed to run a church. We are still in a period of building relationships and in confidence both in our approach and in the capacity of congregants to lead. It is very difficult to manage change in churches and we are asking for a significant change in the culture of how we approach both our internal needs and the outward work of service to our communities.

##### **Achievements during the Year**

Our work continues in positive ways. The City Centre Church is seeing an increase in visitors, especially students from Durham University. We believe it is because we have been open about our stance on inclusivity, the environment, the reported interest in faith from this generation and our striving for the best possible Sunday experience.

The LEP, All Saints, Newton Hall is still offering a wonderful community work to families and users, employing a families worker that has revolutionised how we track and maintain attendees and Safeguarding Standards online. Their approach to Safer Recruitment has helped the entire Circuit to rethink the way we work. There is now an online system that we have bought into, developed by the Anglican church that is helping greatly. We can boast that our relationship with the Chinese Church in the city Centre is moving from strength. They meet at our site at Elvet and have been growing significantly. Their growth outpaces the western church's loss of members marginally. The cultural bridge building that is happening is significant.

The City Centre Churches, Durham City Methodists at Elvet and at North Rd are working in an active partnership. There is an active Mission Plan. It was decided at a Church Council that we could only manage one of the sites and a huge amount of work has happened with our mission team to try and determine how to move forward and which building matches our missional purposes best. At the same time a Women's Charity has shown interest in one of the sites. We are exploring a management lease that would give the charity a secure northern base and our Circuit significant income.

Church Without Walls continues. Church Without Walls has formed on our deacon's driveway and this is extending into online services and prayer walks. This ministry is now happening through a Monday evening Online service, a Friday Walkout bible study and church walk and more things in the pipeline. People attend the online event from as far away as Lincoln.

**DURHAM & DEERNESS VALLEY CIRCUIT  
OF THE METHODIST CHURCH**

**REPORT OF THE TRUSTEES  
FOR THE YEAR ENDED 31ST AUGUST 2025**

**Part 2 – Review of the year's work (continued)**

Other initiatives continue to produce fruit from the labour:

Open The Book' – the re-telling of Bible stories in schools – takes place in Bearpark and continues to be fantastic ecumenical outreach.

Christmas Journey is well underway in two of our church groupings.

Our Ecumenical Partnership in All Saints, Newton Hall, is working well with its leadership and connecting to its local community. They are facing the retirement of their key Anglican leader. Meetings are happening to clarify their church vision and we await what the Anglican church offers in interim leadership.

Several schools visit our churches for Harvest, Christmas and Easter services. Some for the formal "Journey" ministries. Other's for rites of passage from the schools themselves. We are grateful for this contact.

The local foodbank hosted at our DCM Elvet Site has been a lifeline to many still suffering the effects of the economic pressures of high inflation in most sectors. Poverty is a real problem all over England but is more acute in the North East than in most other regions. We have seen an increase in homeless drop ins to the City Centre churches and have tried to supply warm clothes and occasional hot meals. Work with the Council to provide a night shelter in the Winter months collapsed but the need seems to have increased. Thinking and prayer about this growing concern is happening.

Our churches serve their local communities through coffee mornings, craft groups, activities for older members of society and regular visits to neighbouring care homes. Work continues to grow amongst local Care and Nursing Homes with monthly midweek services held at Lindisfarne, Newton Hall, Melbury Court, Durham, Orchard House, Brandon and Springfield, West Rainton. These services are greatly appreciated by the residents.

We have established a Circuit policy to declare a Climate Emergency and churches are responding to change its practices to reduce our carbon footprint and to increase works like recycling drop off points for difficult to recycle items like pill blister packs. Our eco awareness is increasing and our commitment to make a difference is being supported by real action. The Circuit is the first in the area to achieve a Circuit Award for this initiative.

Many church buildings are used on a regular basis for community activities, by outside agencies e.g. probation services , support for refugees and self-help groups.

Ministerial and lay members of the Circuit have continued to under-go the revised Safeguarding training.



**DURHAM & DEERNESS VALLEY CIRCUIT  
OF THE METHODIST CHURCH**

**REPORT OF THE TRUSTEES  
FOR THE YEAR ENDED 31ST AUGUST 2025**

**Significant Changes**

We are working as four churches on different sites and an additional LEP. This will help us to come in line with Connexional direction setting to trim the number of trustee bodies we offer. We are taking it slow in making final decisions about the best way to function to suit the needs in each particular context.

**Events relating to these changes**

Our Circuit Meeting appointed a Mission Team called the Open Doors Team commissioned to help each group to determine a Mission Plan. This work is supported by agreement by the District Mission Enabler. Once Mission Plans are formed, hopes and dreams recorded, Business Plans to make the mission a reality will shortly follow.

**Likely developments in the coming year**

Four of our church buildings are sold. Some money from these sales will be ring-fenced for mission opportunities in the areas where the buildings were sacrificed. Work between the churches and the Open Doors team to identify areas for missional investment continues.

**Contributions of volunteers**

All the work in the Circuit, apart from that of appointed ministers and lay workers, is on a voluntary basis, and includes that of Circuit and church officers, Commissioned Lay Persons, Local Preachers and Worship Leaders, members and secretaries of all the Circuit committees, and those assisting in the running of children's and young people's work.

**Relationship with related parties and other charities**

There are appointed Circuit secretaries and treasurers for Connexional funds, Methodist Homes and Action for Children. Ecumenical links in youth work are developing in some areas of the Circuit, and several churches ran holiday clubs. Authorised minister status has been granted by Conference to the three clergy of the Durham North Area Team of the Anglican Church. The Chinese Church based at Elvet church has become well established. Many churches are involved in Churches Together, Area Action Partnerships and organising events in the local communities.

**Conclusion**

The mission of the Circuit continues through the leadership of our dedicated ministers and lay appointees. The work of volunteers will continue to become increasingly important as we seek to enhance our varied outreach and service to the local communities of our Circuit.

*P. Bissell*

Trustee

*M. E. Newa*

Trustee

**INDEPENDENT EXAMINER'S REPORT  
TO THE TRUSTEES OF  
DURHAM & DEERNES VALLEY  
METHODIST CIRCUIT**

I report on the accounts of the Durham & Deerness Valley Methodist Circuit for the year ended 31 August 2025, which are set out on pages 10 to 14.

**RESPECTIVE RESPONSIBILITIES OF TRUSTEES AND EXAMINER**

The Circuits Trustees are responsible for the preparation of the accounts.

The Circuits Trustees consider that an audit is not required for this year under section 144(2) of the Charities Act 2011 (the 2011 Act) and that an independent examination is needed.

It is my responsibility to:

- examine the accounts under section 145 of the 2011 Act;
- to follow the procedures laid down in the general Directions given by the Charity Commission under section 145(5)(b) of the 2011 Act; and
- to state whether particular matters have come to my attention.

**BASIS OF INDEPENDENT EXAMINER'S REPORT**

My examination was carried out in accordance with the general Directions given by the Charity Commission. An examination includes a review of the accounting records kept by the business and a comparison of the accounts presented with those records. It also includes consideration of any unusual items or disclosures in the accounts, and seeking explanations from you as trustees concerning any such matters. The procedures undertaken do not provide all the evidence that would be required in an audit and consequently no opinion is given as to whether the accounts present a 'true and fair view' and the report is limited to those matters set out in the statement below.

**INDEPENDENT EXAMINER'S STATEMENT**

In connection with my examination, no matter has come to my attention:

(1) which gives me reasonable cause to believe that in any material respect the requirements:

- to keep accounting records in accordance with section 130 of the 2011 Act; and
- to prepare accounts which accord with the accounting records and comply with the accounting requirements of the 2011 Act

have not been met; or

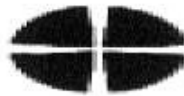
(2) to which, in my opinion, attention should be drawn in order to enable a proper understanding of the accounts to be reached.

*J. Holbrook*

John Holbrook FCCA  
Robson Laidler Accountants Limited  
Mains House  
143 Front Street  
Chester le Street  
Co Durham  
DH3 3AU

*12/02/2026*

Date



**CIRCUIT  
RECEIPTS AND PAYMENTS  
ACCOUNTS**

**THE METHODIST CHURCH  
STANDARD FORM OF ACCOUNTS**

<b>Durham and Deerness Valley</b>	Circuit
-----------------------------------	---------

FOR THE YEAR ENDED  
31 AUGUST 2025

	Circuit no	13/11
--	------------	-------

**Registered Charity - Registration number**

1132827

If not a registered charity **Her Majesty's Revenue and Customs Gift Aid number**

(The HMRC number is equivalent to a registered charity number in terms of evidence of charitable status and may be used to give to donors or grant funders wishing to see evidence of the organisation's charitable status. Methodist charities in England and Wales that are not registered charities are excepted from registration under Statutory Instrument 2655 of 2007)

Ministers:

The Revd John Squares (Superintendent Minister)
The Revd. Fiona Weir Deacon Ruth Lackenby

Circuit Stewards:

Penny Bissell
John Fairbairn
blank

Treasurer:

blank
-------

ACCOUNTS FOR THE YEAR upto 31st Aug. 2025

Durham and Deerness Valley

Circuit

SECTION A		Un - restricted Funds	Circuit Model Trust Fund	Restricted Funds	TOTAL THIS YEAR	TOTAL LAST YEAR
	Note	£	£	£	£	£
a1	<b>RECEIPTS</b>					
a2	Assessment/Share	150,272			150,272	147,776
a3	Capital receipts	0	90,297		90,297	455,206
a4	Bank and CFB interest and Investment	8,121	24,968		33,089	24,435
a5	Lettings - buildings being rented	27,968			27,968	22,205
a6	Other receipts	13,487	0	0	13,487	26,365
a7	<b>TOTAL RECEIPTS</b>	<b>199,848</b>	<b>115,265</b>	<b>0</b>	<b>315,113 (a8)</b>	<b>675,987</b>

SECTION B						
b1	<b>PAYMENTS</b>					
b2	Stipends, salaries, NIC, Pension and	161,048	0		161,048	150,993
b3	Manse Costs	13,400			13,400	11,873
b4	Administration etc	10,056			10,056	13,461
b5	District Assessment	0	0		0	1,489
b6	Grants & donations		0		0	
b7						
b8	Other payments and Manse being sold	8,938	0	0	8,938	25,447
b9	<b>TOTAL PAYMENTS</b>	<b>193,442</b>	<b>0</b>	<b>0</b>	<b>193,442 (b9)</b>	<b>203,263</b>

SECTION C						
c1	<b>NET RECEIPTS/PAYMENTS FOR</b>	<b>(a7-b8)</b>	<b>6,406</b>	<b>115,265</b>	<b>0</b>	<b>121,671</b>
c2	Total funds brought forward from last year		223,631	522,767	934	747,332 (c6)
c3	<b>Sub total</b>	<b>(c1+c2)</b>	<b>230,037</b>	<b>638,032</b>	<b>934</b>	<b>869,003</b>
c4	Transfers and adjustments		50,000	(50,000)		(c7)
c5	<b>TOTAL FUNDS AT END OF YEAR</b>	<b>(c3+c4)</b>	<b>280,037</b>	<b>588,032</b>	<b>934</b>	<b>869,003 (c8)</b>

SECTION D					
<b>FOR INFORMATION ONLY: MONEY RECEIVED AND PASSED ON TO EXTERNAL ORGANISATIONS</b>					
d	(these amounts should not be included in total receipts/payments above)				
d1	Balance brought forward from last year				
d2	Offerings/Gifts - rec'd for ext. organisations District Assessment			42,840	42,840
d3	Offerings/Gifts - passed to ext. organisations District Assessment				0
d4	<b>BALANCE STILL TO BE PAID (d1 + d2 - d3)</b>			<b>42840</b>	<b>42,840</b>

**SUMMARY OF CIRCUIT ACCOUNTS AND INTERNAL ORGANISATION REPORTING TO THE CIRCUIT MEETING****SECTION E** Please follow the Guidance Notes to complete

Summary of the Circuit accounts for the year ended 31 August 2025 and Internal Organisations reporting to the Circuit Meeting. Note that the funds of an Internal Organisation would normally be Restricted funds unless it could be clearly shown that they could be used for any Methodist purpose.

This section must be completed to arrive at the total income and expenditure of the Circuit. If gross income exceeds the Accruals threshold, then the Accruals method of accounting AND A DIFFERENT FORM must be used to report the accounts. Contact Resourcing Mission Office, Manchester tel: 0161 236 5194. Please refer to the guidance notes regarding transfers between the Circuit and its Internal Organisations.

INTERNAL ORGANISATIONS		Receipts	Payments	Net Receipts/ Payments	Adjustments	Opening balances	Closing balances
e1	Circuit Youth	0		0		291	291
e2				0			0
e3				0			0
e4				0			0
e5				0			0
e6				0			0
e7				0			0
e8	Sub total of Internal Organisations funds	0	0	0	0	291 (e11)	291 (e12)
e9	Circuit accounts totals brought forward from page 2 - totals column	315,113 (a8)	193,442 (b9)	121,671	0 (c7)	747,332 (c6)	869,003 (c8)
e10	<b>TOTAL CASH FUNDS HELD BY CIRCUIT</b>	<b>315,113</b>	<b>193,442</b>	<b>121,671</b>	<b>0</b>	<b>747,623 (x)</b>	<b>869,294 (y)</b>

Continue on a separate sheet if necessary and bring the totals forward

**TOTAL  
RECEIPTS**

**TOTAL  
PAYMENTS**

**SECTION F****STATEMENT OF ASSETS AND LIABILITIES****CIRCUIT - CASH FUNDS HELD at 31 August 2025**

f1	Cash in hand
f2	Bank Current Account
f3	Conventional Manses
f4	Central Finance Board
f5	Trustees for Methodist Church Purposes
f6	Other funds (CAF & Chapel Aid)
f7	<b>SUB TOTAL OF CASH FUNDS HELD BY</b>
f8	Total funds held by Internal Organisations (the
f9	<b>TOTAL CASH FUNDS HELD BY CIRCUIT</b>

OPENING BALANCES	CLOSING BALANCES
32,053	45,304
0	0
182,512	225,668
522,767	588,031
10,000	10,000
747,332 (e6)	869,003 (e8)
291 (e11)	291 (e12)
<b>747,623 (x)</b>	<b>869,294 (y)</b>

**SECTION G****OTHER ASSETS and LIABILITIES**

g1	Investments (include Endowments)
g2	Land and Buildings (see notes re Insurance value)
g3	Other Assets - loans by the Circuit
g4	Loan(s) - show amount outstanding at year end
g5	Other Liabilities

At 14 November 2024	At 14 November 2025
2,519,077	2,624,885
33,400	15,800

## DECLARATIONS

### Circuit Finance Officer

I confirm that I have prepared the accounts from the records of the Circuit and that they include all funds under the control of the Circuit Meeting

Signature of  
Treasurer

*Peter Templer*

Date

02/02/26

Name

Peter Templer

Address

11 Leyland Close, Bowburn, Durham DH6 5DD

### Presentation to the Circuit Meeting for approval.

I confirm that the Accounts have been presented to the Circuit Meeting on  
and were approved

04/12/25

Signature of the Chair of the meeting

*John Squares*

Name of the Chair of the meeting

Rev. John Squares

Date

Feb 6<sup>th</sup> 2026

### Independent Examiner's Report to the Trustees of the

Durham & Deerness Valley

Circuit

This Report is on the Church Accounts for the year ended 31<sup>st</sup> August

2025

carried out under Section 43 of the Charities Act 1993, or in Scotland Section 11 of the charities and  
Trustee Investment (Scotland) Act 2005.

### Respective responsibilities of Trustees and Examiner

As Trustees, you are responsible for the preparation of the accounts. The Charity's Trustees consider that an audit is not required for this year under Section 43(2) of the Charities Act 1993 (the 1993 Act) or under Regulation 10 (1)(d) of The Charities Accounts (Scotland) Regulations 2006 (the 2006 Accounts Regulations) and that an independent examination is needed

It is my responsibility to:

- examine the accounts under section 43 of the 1993 Act and section 44(1) of the Charities and Trustee Investment (Scotland) Act 2005;
- to follow the procedures laid down in the general Directions given by the Charity Commission under Section 43(7)(b) of the 1993 act; and
- to state whether particular matters have come to my attention.

## Basis of Independent Examiner's Report

My examination was carried out in accordance with the general Directions given by the Charity Commission and is in accordance with Regulation 11 of the Charities Accounts (Scotland) Regulations 2006. An examination includes a review of the accounting records kept by the charity and a comparison of the accounts presented with those records. It also includes consideration of any unusual items or disclosures in the accounts, and seeking explanations from you as Trustees concerning any such matters. The procedures undertaken do not provide all the evidence that would be required in an audit and consequently no opinion is given as to whether the accounts present a "true and fair view" and the report is limited to those matters set out in the statement below.

## Independent Examiner's Statement

In connection with my examination, no matter has come to my attention:

(1) which gives me reasonable cause to believe that in any material respect the requirements:

- to keep accounting records in accordance with Section 41 of the 1993 Act and Section 44 (1)(a) of the 2005 Act and Regulation 4 of the 2006 Accounts; and
- to prepare accounts which accord with the accounting records and comply with the accounting requirements of the 1993 Act and Section 44(1)(b) of the 2005 Act and Regulation ( of the 2006 Regulations)

have not been met; or

(2) to which, in my opinion, attention should be drawn in order to enable a proper understanding of the accounts to be reached.

Name

JOHN HOLBROOK

Signature

J. Munn

Relevant Professional qualification or

FCCA

Address

MAINS HOUSE, 143 FRONT STREET, CHESTER-LE-STREET,  
COUNTY DURHAM, DH3 3AN

Date

12/02/2026