

**THE PAROCHIAL CHURCH COUNCIL OF THE
ECCLESIASTICAL PARISH OF ST MARY THE VIRGIN
AND ST MARY MAGDALEN, TETBURY**

ANNUAL REPORT & FINANCIAL STATEMENTS

31 DECEMBER 2024

Charity Number 1132325

**THE PAROCHIAL CHURCH COUNCIL OF THE ECCLESIASTICAL PARISH OF
ST MARY THE VIRGIN AND ST MARY MAGDALEN, TETBURY**

ANNUAL REPORT & FINANCIAL STATEMENTS

YEAR ENDED 31 DECEMBER 2024

Contents	Pages
Trustees' Annual Report	1 - 17
Reference & Administrative Information	18
Independent Examiner's Report	19
Receipts & Payments Account	20 - 21
Statement of Assets & Liabilities	22
Additional Information & Amplified Notes	23 - 26

THE PAROCHIAL CHURCH COUNCIL OF THE ECCLESIASTICAL PARISH OF ST MARY THE VIRGIN AND ST MARY MAGDALEN, TETBURY

TRUSTEES' ANNUAL REPORT

YEAR ENDED 31 DECEMBER 2024

STRUCTURE, GOVERNANCE & MANAGEMENT

The method of appointment of PCC members, who are therefore Trustees of the charity, is set out in the Church Representation Rules, and the PCC operates under the "Revised Constitution of the Parochial Church Council", effective from 27th April 2021. All church attendees are encouraged to register on the Electoral Roll and to stand for election to the PCC.

Objectives and activities

The PCC is the key decision-making body of a Church of England parish, and a crucial body in the leadership of our church. It consists of licensed clergy, churchwardens, readers who wish to be members, Deanery Synod Representatives, and PCC members elected by the Annual Parochial Church Meeting.

The PCC is an ecclesiastical entity. As the "executive body" of a Church of England parish it exists to ensure a parish carries out its duties, as defined in law. The PCC is also a legal entity, a charity, and the PCC members are trustees of that charity, so they have certain legal responsibilities, and also follow guidelines for best practice in terms of governance. The PCC has regard to the Charity Commission's guidance on public benefit.

Under the Parochial Church Council (Powers) Measure 1956, the key responsibilities of the PCC are:

- To work with the Rector to enable our church to play its part in God's mission to his world. To develop an engaging and compelling picture of God's vision and purposes for us, shaping all that we do and are as his people in this place, with the ministries and resources we need to fulfil this mission.
- To co-operate with the Rector in sharing leadership, discerning how we are called by Christ to be about God's mission and ministry here in Tetbury.
- To ensure legal compliance with charity law and ecclesiastical law, in particular in the areas of finance, employment and appointments. Key areas here are safeguarding, financial oversight supported by the Treasurer, health and safety, disability, insurance, risk assessment, data protection, and acting as a good employer of any paid workers.
- To care for the buildings and churchyard so that they may be best suited for the purpose of the church's ministry and mission.
- To be a channel of consultation within the wider Church through its synodical structures on matters that affect the Church locally and nationally.

The PCC carries out most of its functions through five committees: Stewardship, Fabric, Communications and Outreach, Faith and Growth, and Pastoral Care and Social Justice. Under their remit, each committee meets four times a year, with six full PCC meetings annually; the Chair and members are elected in May each year, and other members co-opted as required; as appropriate, the Committee remits include oversight of the key priorities identified in our vision work, "Imagining our Future and Shaping our Plans". The Standing Committee meets only where urgent business needs to be enacted between PCC meetings.

Electoral Roll

There were 165 on the Church Electoral Roll, as recorded at the APCM in April 2024. In 2025 there will be a full revision of the electoral roll.

The maintenance of worship is reviewed by the Faith & Growth Committee below.

THE PAROCHIAL CHURCH COUNCIL OF THE ECCLESIASTICAL PARISH OF ST MARY THE VIRGIN AND ST MARY MAGDALEN, TETBURY

TRUSTEES' ANNUAL REPORT

YEAR ENDED 31 DECEMBER 2024

Readers & Clergy

We were sorry to say good-bye to our Incumbent, The Revd Canon Poppy Hughes in September, who had completed her tenth full year in ministry with us.

We are very grateful for our two staff clergy, Revd Pauline Setterfield and our Curate, Revd Dr Steve Bullock and all that they contribute. Our Clergy and Readers Team meets every six weeks and continues to provide loving and generous support to ministry here. Members are now two Readers, Sarah Parton and Andrea Aveyard; and seven clergy with Permission to Officiate: Liz Angell, Ian Aveyard, Peter Hyson, Richard and Margaret Maslen, Julie Nicholson and Barry Raven.

In a vacancy the churchwardens have ultimate responsibility.

Occasional Offices

Baptisms - Through the year there were 18 baptisms in total. Many of these continue to be held as separate "family" baptisms, outside the main Sunday service. This is not our usual practice, but meant that we could accommodate the high number of requests.

Weddings - There were 6 weddings during the year.

Funerals - There were 18 funerals or services of thanksgiving held in St Marys'.

Report on the activities of the PCC over the last year

The normal pattern of PCC meetings is now January, March, May, July, September and November. The PCC met eight times in 2024 including an Extraordinary Meeting to discuss the Vacancy: January, March, April, June, July, September, October and November.

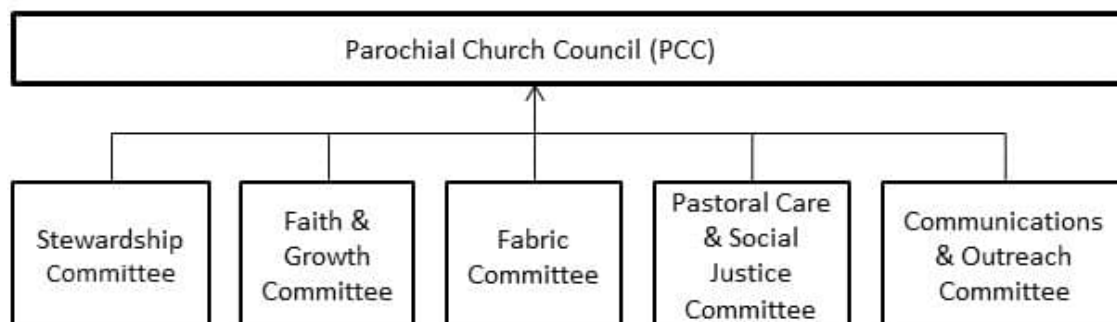
Safeguarding: The policy is reviewed and approved annually at the October meeting. Safeguarding is a standing item on every PCC agenda.

PCC Committees:

In its oversight of and support for the life of our church community, the PCC has five committees which each meet four times a year. Membership of committees is reviewed annually at the PCC meeting following the APCM, including co-opting members from the congregation.

Reports of the Committees are contained elsewhere in this Trustees' Annual Report.

The Revd Liz Angell, PCC Secretary



THE PAROCHIAL CHURCH COUNCIL OF THE ECCLESIASTICAL PARISH OF ST MARY THE VIRGIN AND ST MARY MAGDALEN, TETBURY

TRUSTEES' ANNUAL REPORT

YEAR ENDED 31 DECEMBER 2024

VISION AND MISSION

Our vision is for our church community to be a place of vibrant Christian faith, connecting with our local community, and supported by creative, sustainable ways of working together.

We have five priorities in our life together.

1. Drawing in children and young people to know the story of God's love in their lives. Achievements and performance reviewed by the PCC Faith & Growth Committee below.
2. Growing disciples. Achievements and performance reviewed by the PCC Faith & Growth Committee below.
3. Providing loving pastoral care. Achievements and performance reviewed by the PCC Pastoral Care & Social Justice Committee below.
4. Effective communication. Achievements and performance reviewed by the PCC Communications and Outreach Committee below.
5. Finding imaginative solutions for our church building, so it is sustainable now and for future generations, continuing to worship and serve God, as God's people in this place. As this project now spans all aspects of our church life, with the remit held centrally by the PCC, reporting follows here under "Reshaping St Marys".

Reshaping St Mary's Church

Since the last APCM, the Reshaping project continues and has entered Phase 2.

Phase 1 consisted of:

- The consultation in early 2023 to find out what Tetbury people felt the church was for and what they'd like us to be doing for worship and community.
- This resulted in 9 options being presented to the PCC, from which and after much thought, prayer and discussion, the PCC decided the best Option was to commit to remaining in St Marys', possibly with an extension.
- Two experienced architects presented to the PCC and after further prayerful consideration, the PCC agreed to commission Antony Feltham-King of St Ann's Gate in Salisbury. (<https://www.stannsgate.com>). They felt he best understood the heart, soul and mind of what we're trying to do and presented some interesting practical possibilities for ongoing creative dialogue in Phase 2.
- A Working Party currently chaired by Peter Hyson was set up to keep things moving!
- Phase 2 is about research and exploring possibilities in more detail. This includes surveys (including archaeological) and specialist advice. We need to appoint a professional Project Manager. This phase is about better understanding what's possible and what isn't. We also need to keep talking to the Diocese, planning officers of various sorts and a myriad of other interested parties. Dan Fletcher, a professional fundraiser, has agreed to co-ordinate our fundraising and grants work.

We expect Phase 2 to last for most of 2025, but it depends on development fundraising (separate to construction fundraising), availability of the specialist professionals and a number of other factors mainly beyond our control.

In the latter stages, there will be opportunities for further comments and input. While decisions are the legal responsibility of the PCC and the Diocese, we'll be asking for comments on how the emerging ideas meet the clear needs and priorities – not just for better loos, kitchen, heating and meeting spaces but for wider community use. We'll be mounting displays from time to time in the church on the website and in the Tetbury Advertiser. Phase 2 will end with the finalising of designs and plans.

THE PAROCHIAL CHURCH COUNCIL OF THE ECCLESIASTICAL PARISH OF ST MARY THE VIRGIN AND ST MARY MAGDALEN, TETBURY

TRUSTEES' ANNUAL REPORT

YEAR ENDED 31 DECEMBER 2024

Phase 3 will be the actual physical changes. This will go hand-in-hand with phased construction fundraising.

What can I do to help? Firstly, we need prayer because we believe this is a partnership between us in the church and town and with God. Secondly, please pass this information on to others – it's so important that people hear and know what's actually happening – or isn't! Thirdly, we need donations, large and small so if you know any person or organisation who might be willing to contribute to secure St Marys' for the next hundred years, please let us know.

Revd Peter Hyson

FABRIC COMMITTEE

As chair of the Fabric Committee, Sue Thomas, is hugely grateful to the committee members Mike Hardwick, Diana Challis, Darren Baker. Co-opted members: *Chair of Friends of St Marys' (vacant)*; Jonathan Adkins, Ian Thomas, John Sharp, Lawrence Moss (sound system). Anyone interested in joining the team would be most welcome.

Regular surveys take place on the state of the under gallery and woodworm infestation.

Annual & Bi-annual checks were carried out on fire extinguishers, roof alarms and other similar items. The gallery handrail was installed which meant the Music Festival had full use of the building.

The auto wind motor for the carillon had to be repaired. The ciborium was taken to silversmiths for repair.

The organ has had several small repairs, and the organ blower was serviced.

There have been several failures of lighting in the church. The outside lights failed in August and were repaired before the Music Festival. Three emergency lights in the vestries and the NE ambulatory have failed. The lighting in the tower – bell chamber and ringing chamber failed. The tower lighting has been repaired.

There has been a Quinquennial Report which is under consideration by the Fabric Committee.

Sue Thomas (Churchwarden & Chair of Fabric Committee)

Friends of St Marys'

No report this year. The position of Chair of Friends of St Marys' is currently vacant.

Tower and bell ringing

2024 was a relatively quiet year for the ringers – quite literally at times! During the six weeks the church met in school we didn't ring on Sunday mornings. Apart from the practicalities of ringers being unable to run the distance between the tower and the school at sufficient speed to make the start (or even the first 10 minutes) of the service, it was also deemed inappropriate; the purpose of the bells is to summon worshippers to the church, but if the church building is not open then it can be a little confusing, especially to any visitors who might not be aware of the change of location.

Once services started again in church we resumed Sunday service ringing with gusto and have rung for most Sundays since. There were one or two exceptions in the summer when many of the ringers were away on a well-deserved break, but by and large we managed to keep the ringing going. We also rang for several weddings and other special occasions.

THE PAROCHIAL CHURCH COUNCIL OF THE ECCLESIASTICAL PARISH OF ST MARY THE VIRGIN AND ST MARY MAGDALEN, TETBURY

TRUSTEES' ANNUAL REPORT

YEAR ENDED 31 DECEMBER 2024

We opened the tower for tours on three occasions during the year; Woolsack Day, Count on Nature, and the Christmas Fayre. Across these three events we raised somewhere over £500 for church funds. We hope to open the tower again in 2025, so watch this space if you fancy learning about the bells or view Tetbury from the top of the tower.

We currently have a good crop of ringers but could always do with more. If you fancy learning, please speak to me (John Sharp) or drop me a line at bells@tetburychurch.co.uk. You don't have to be musical or have any previous experience. Age is also no barrier – we can train children (accompanied by an appropriate adult) from age 12, right up to pensioners. As long as you can climb the steps to the ringing chamber you are welcome to join us.

John Sharp (Tower Captain)

The Shop

The Shop continues to make a good profit for the Church and my thanks go to the Stewards who promote it when they are on duty. It is kept well stocked with a fairly wide variety of items for sale. This year the newly introduced small wooden Church Mice, from a firm in the Lake District, have proved to be extremely popular with visitors and have outperformed everything else! Cards for all occasions are also a mainstay for the shop. Visitors and local townspeople know they can buy religious cards from the shop which are sometimes difficult to obtain elsewhere. Newly designed mugs, depicting views of both the Church and the Market Hall are now on sale. Please encourage people to use the Shop and if you would like to help do let me know. You would be most welcome.

Diana Challis

ECO CHURCH REPORTING

The A Rocha five criteria for EcoChurch fit well with the Committee structure of our PCC. However, the criteria have been significantly updated in December 2024 and will need our consideration in the coming year.

The Church of England continues to stress the importance of our attention to Climate Change and the subsequent environmental impact on our Ecocsystems. This is reflected in the Anglican Communion's Fifth Mark of Mission – namely - to strive and safeguard the integrity of creation and sustain and renew the life of the Earth –

1. **Worship and Teaching [Faith and Growth Committee]** follows Eco themes throughout the year.
 - ✓ At Harvest and Creationtide
 - ✓ In our weekly prayers including Loss and Damage [COP 29 success]
 - ✓ In our hymns, reflective music
 - ✓ Baptisms – new promise to be a steward of the earth.
 - ✓ Sustainable Church Flowers are an established contribution to Worship
 - ✓ More ethical approach to resources – candles etc.
2. **Management of our Church building [Fabric Committee]** – our biggest Eco concern is energy [Climate Crisis and Ukraine war] which in winter, causes our building to be hard to use for the purposes for which it was designed and consecrated.
 - ✓ We use a green tariff [through the Church of England's Parish Buying Scheme]

THE PAROCHIAL CHURCH COUNCIL OF THE ECCLESIASTICAL PARISH OF ST MARY THE VIRGIN AND ST MARY MAGDALEN, TETBURY

TRUSTEES' ANNUAL REPORT

YEAR ENDED 31 DECEMBER 2024

-
- ✓ Our energy usage is constantly monitored, and this year we continue to have the least usage in 4 years. We continue looking at alternatives such as solar panels and radiant heat units. Huge thanks to Sue and Ian on their monitoring and control of the church's energy use. The reordering process will aim to have strong energy saving and efficiency criteria. At present the building is largely unusable for long periods in cold winter months.
 - ✓ This midwinter we experimented successfully with 'Space Sharing' at the Primary School. This meant more efficient energy use at the coldest time of the year. We will repeat this approach in 2025.
 - ✓ We use mostly LEDs.
3. **Management of our Churchyard [Fabric Committee]** – working with the Town Council we aim to protect this sacred space, provide community access and providing a haven for wildlife.
- ✓ 3 height levels of mowing embrace a range of plants and animals whilst giving the space respect. Shortest cutting is nearest the paths.
 - ✓ The wildflower meadow had a successful third year – more species of plants and insects. Less poppies.
 - ✓ Bird and Bee boxes have been installed
 - ✓ Bird feeding in all seasons – thank you Diana.
 - ✓ Notices to inform of our management.
 - ✓ Appropriate management of trees
 - ✓ Count for Nature in June records our successes and areas to improve and shares our work nationally and with the community
 - ✓ Moths are monitored several times a year by Peter and we have a significant unseen population throughout the year, including some rarities. We have rare mosses and lichen.
 - ✓ We have very successful plant cuttings table in the churchyard [thank you Diana]
4. **Community and Global engagement [Pastoral Care and Outreach Committee]** – we aim to use local and global connections to promote Ecochurch.
- ✓ We have enabled a significant training project connecting two Deaneries on Sustainable Church Flowers [no oasis and home grown not flown flowers]. Our church was involved in a significant flower festival at St John Baptist Cirencester.
 - ✓ We are promoting and equipping our own Eco flower arranging group.
 - ✓ We are enabling Charitable giving to local and global eco projects.
 - ✓ We have a group of Lay Pastoral assistants who care for people locally in many projects.
5. **Lifestyle [Communications and Outreach and Committee]** – we aim to communicate ways that the lifestyle of the church and home can make differences to our carbon footprint and stewardship of 'Creation'.
- ✓ Tip of the Month [Mailchimp, Website and Facebook]
 - ✓ Eco awareness of our events. Successful moth reveal and talk
 - ✓ Church displays.
 - ✓ Eco- awareness in our shop
 - ✓ Promotion of Foodbank, Community Fridge and Hedgehog newspaper collections.

THE PAROCHIAL CHURCH COUNCIL OF THE ECCLESIASTICAL PARISH OF ST MARY THE VIRGIN AND ST MARY MAGDALEN, TETBURY

TRUSTEES' ANNUAL REPORT

YEAR ENDED 31 DECEMBER 2024

Thank you for all your support!

Rosemary Bailey

FAITH AND GROWTH

Remit:

- Lead strategic planning for growing disciples, including drawing children and young people into the life of our church community.
- Review and support and encourage those responsible for: church provision for children and families growing disciples; and worship.
- Actively supporting the PCC's aim to express our care for God's world through our liturgy and teaching, including personal lifestyle choices.

Maintenance of Worship

The average weekly attendance on a normal Sunday ("Usual Sunday Attendance"/USA as returned to the Diocese) was 72 (compared with 70 in 2023). Our figures for online viewing have been in line with last year.

These numbers increased significantly on special occasions, including:

- Easter 2024: 111 adults and 21 children (179 and 42 in 2023).
- Remembrance Sunday: 283 adults and 84 children and young people attended the 2.30pm service in church followed by the commemoration at the War Memorial (218 and 85 in 2023).
- Christmas: 156 people attended the Christmas Carol Service (174 in 2023); 134 adults and 61 children attended the Christmas Eve Crib Service (175 and 125 in 2023), with 137 at Midnight Mass (188 in 2023), and 111 on Christmas morning (113 in 2023).

The number of families attending the main 10am Sunday service was relatively stable, with Little Fishes continuing to be active throughout the year. Our thanks go to the team of Sarah Williams, Jo Ruiz, Clare Morton, Clare Price, Gwen Whitworth, Linda Bullock, Karen Davis and Sarah Parton.

Through the year, we have continued with a more varied pattern of worship, hoping by God's grace to also connect and draw in other people. In particular, we have developed a programme of Sunday evening services called "Heart and Soul", in which we have experimented with styles of worship. We are aiming to alternate between either being reflective or informal in nature and will invite all to explore how they can connect with God creatively, as well as consider how all can serve God wherever they may find themselves.

In addition, iSingPOP CELEBRATE (which is a "Fresh Expression of Church") meets each month during term time, (4-5.30pm in the school hall and also sometimes in church), we regularly have 8-12 families taking part. With a different theme each time, we share a Bible story, craft activities, singing, prayers and teatime together.

We are grateful to the many people who have supported and enabled our worship through the year. These include our churchwardens and team of welcomers; the vergers and servers; organist Jonathan Adkins and the congregational choir, as well as David Kyle, who has stepped in for Jonathan as organist on occasions; readers and intercessors; Lawrence Moss who manages the sound system; and to John Sharp, Diana Sharp, Neville Parton and Lawrence for the much-valued live stream of Sunday Worship.

We are delighted that Michele Maund and Rosemary Bailey have been licensed as Worship Leaders.

THE PAROCHIAL CHURCH COUNCIL OF THE ECCLESIASTICAL PARISH OF ST MARY THE VIRGIN AND ST MARY MAGDALEN, TETBURY

TRUSTEES' ANNUAL REPORT

YEAR ENDED 31 DECEMBER 2024

Working with schools

In seeking to draw children and young people to know God we continued to have strong links with St Mary's Church of England VA Primary School. Poppy, Pauline and Steve continued to lead Collective Worship, and Faith Explorers' after-school club meets regularly. We also give out "God bless you" cards to all 360 children, and the class teachers, at the beginning of the new school year. Our thanks go to our Foundation Governors, who are responsible for ensuring Christian distinctiveness is embedded and upheld within every aspect of school life: David Greenwood (resigned 2024), Leslie Baldwin (resigned 2024), Crispin Auden, Mike Avis, Andy Howell and Colin Rae along with Poppy Hughes. Our thanks also to Rosemary Bailey who stood down during the year.

In Sir William Romney School, our Youth Worker Mandie Winbow continues to provide a loving Christian presence with support in the school. Over this last year she has run a Monday lunchtime club for invited students who need additional support in feeding themselves on a budget and taught them useful recipes which are simple but also very tasty. This work has led to her developing a strategic link with the Tetbury Foodbank to further support vulnerable students. On a Tuesday and Thursday lunchtime, Mandie holds a craft club in the library for students to work on different topical pieces. This has a stable 15-20 young people attending each session and provides a safe place for conversations and things which the young people wish to talk about. Steve visits Mandie once a month and sees this important work in action. We are grateful for Mandie's unfailing and loving support of SWR students.

This last year has also seen Steve being involved in various RE lessons and the school re-establishing their Christmas Event in the church. We look forward for further links to be established going forward.

The Revd Canon Poppy Hughes (Rector) and The Revd Dr Steve Bullock (Curate)

Church music and choir

Music is a much loved and vital part of our worship. It brings it alive and enables the most profound sharing of worship. We are so grateful to all who offer their gifts, time and commitment in supporting music in worship.

During the past year, we have continued to explore our approach to music and the role of the choir.

- The "pop-up" congregational choir directed by Jonathan Adkins continues to support regular worship. This is a welcome opportunity to share in this ministry, and we are grateful to all those who support us week by week. Jonathan is always on the lookout for further potential members of the choir and others interested in participating in our musical life, and many thanks also go out to him for his musicianship and leadership. We are also grateful to David Kyle who has kindly stood in when Jonathan has been unavailable.
- In January 2024, we held a Songs of Praise service, at which members of the local community chose the hymns, followed by Hymns and Pimms in July. These services were a valued addition to the musical life of the church.
- We hosted the annual Tetbury Music Festival in October.

Richard Mattick (Committee Chair)

Growing disciples

In working to grow disciples, a significant factor has been the continued strength of our five home groups in Lent and Advent.

THE PAROCHIAL CHURCH COUNCIL OF THE ECCLESIASTICAL PARISH OF ST MARY THE VIRGIN AND ST MARY MAGDALEN, TETBURY

TRUSTEES' ANNUAL REPORT

YEAR ENDED 31 DECEMBER 2024

In Lent 2024 our theme was simply church, exploring the why, what and how of being church. Over the weeks we focused on 'Why church?' on Jesus's invitation to Come, To Follow, then we thought about what it was To Grow and To influence others. As a result, one home group loved meeting together so much that it was decided that those who could, would meet up weekly to continue to study the Bible and to pray.

Our Advent Quiet Day focused on the manifesto of Hope, Love, Joy and Peace which was then followed up by our Advent home groups which focused on the annunciation, the Magnificat and the Benedictus using Lectio Divina to allow the Bible passages to speak to all individually and corporately.

As a result of the 2023 'Being With' course in February 2024 three adults got baptised and confirmed. In 2024 another Being With course was undertaken, this time offering day sessions in Christ Church. This didn't attract as many people as the previous year with approximately a regular 5 people in attendance. Good discussions were had which have supported further growth and development in the attendees, who may come onto any future confirmation courses run.

This last year also saw the development of Heart and Soul, a new service which seeks to explore different styles and types of worship. As a result of this, we are starting to see new people coming and choosing to serve and participate in new ways, where they haven't felt able to before.

In terms of our work with families, Little Fishes for children continued to be offered on Sundays during the services and iSing Pop continued to meet throughout the year providing crafts, food and helping everyone of all different ages to learn further about God. There seems to be a regular core of people who choose to attend these.

There have been many individuals who have explored further their giftings this year, with volunteers being added to many support teams such as the flower team, the welcomers and those supporting service administration under the guidance of the vergers. However, there have been noted individuals who have undertaken specific courses to further explore their giftings. These include Michele Maund who successfully undertook her course and has become a licensed funeral minister, Linda Bullock and Ronnie Hodges successfully completed the pastoral assistant's course and Darren Baker enrolled onto an introduction to ministry/theology course at CGH – part of Cuddesdon theology college.

Revd Dr Steve Bullock

Prayer

Prayer is a concrete expression of our love of God and, in prayer, we accept the invitation to call upon God in confidence, as strong and caring father or mother. In our life, the ways in which we encourage and share in prayer include:

- The weekly "prayer focus" prepared by Geraldine Geers and published on the church website, with a link in the weekly Keeping in Touch email.
- The prayer tree. Many prayer requests are made by church family members, and by visitors, and are shared in morning prayer each week by Poppy, Steve and Pauline.
- Tuesday morning prayer time on Zoom, with a link and details each week in the Keeping in Touch email.
- Prayer ministry offered on the second Sunday of the month at the 10am service. Supported by a small and faithful team, which offers an opportunity to have a short time of prayer for yourself or those you are concerned about.

Vergers and servers

Week in, week out, we are supported by a small team of people who set up for our worship: for the 8.30am service, Ann and Peter Lisle-Taylor, Crispin Auden and Darren Baker; for the 10am service and

THE PAROCHIAL CHURCH COUNCIL OF THE ECCLESIASTICAL PARISH OF ST MARY THE VIRGIN AND ST MARY MAGDALEN, TETBURY

TRUSTEES' ANNUAL REPORT

YEAR ENDED 31 DECEMBER 2024

also the Wednesday morning, Valerie Trumper, Sarah Williams, Ronnie Hodges, Mary Hinton, Judith Randall and Michael Bailey.

Mary and Michael are also servers in the 10am service. This provides a wonderful opportunity for sharing in ministry, and is much valued, and we hope we can draw more people into the team in the coming year.

Huge thanks go to these people, who prepare for our worship with such care, and support and enable us in our gathering each week.

Sarah Williams

Churches together

We value our membership of Tetbury Area Churches Together (TACT) and continue to play a full part in its activities. Our shared activities include: Holiday at Home, iSingPOP Celebrate, involvement in running the Food Bank, Lent lunches and Reflect Women's Breakfasts. Our shared worship includes The Week of Prayer for Christian Unity; World Day of Prayer; Christian Aid/Cafod service in May; Good Friday Walk of Witness; and Remembrance Sunday.

PASTORAL CARE AND SOCIAL JUSTICE

Remit:

- Lead strategic planning for providing loving pastoral care.
- Actively supporting the PCC's aim to express our care for God's world through encouraging community engagement and giving to support advocacy for climate justice.
- Regularly review our provision of pastoral care and encourage and support those involved in enriching and enhancing that provision.

The ministry of loving pastoral care involves the visiting and supporting of friends and neighbours in the community. Our Pastoral Assistants, Michele Maund, Sarah Williams, Valerie Trumper and Sue Sherwood have continued to provide Communion both to people at home, and in our care homes, Kingsley House and Upton Mill.

The Revd Pauline Setterfield, Rosemary Bailey and Sarah Parton have taken Easter and Christmas services to Steepleton and Revd Liz Angell has been taking Home Communion to some of the residents in Prince Court.

Ronnie Hodges and Linda Bullock have finished the Pastoral training and are waiting to be commissioned.

We have a regular presence at the weekly "Friendship Café" held in Dolphins Hall every Thursday. From 1st November 2024 this was taken over by TAYCT from the Tetbury Town Council. As a charity with access to better funds the future of this project grows from strength to strength and is a much needed community hub for everyone.

We continue to support the Food Bank and the people most in need of help with details of this below.

More broadly, we continued our focus on social justice for all people, with our regular Second Sunday Collections. And the church community has become increasingly involved in issues around the climate crisis and climate injustice. Under the leadership of Rosemary Bailey, we continue to work for the Eco-Church Gold Award, as outlined in the separate report.

THE PAROCHIAL CHURCH COUNCIL OF THE ECCLESIASTICAL PARISH OF ST MARY THE VIRGIN AND ST MARY MAGDALEN, TETBURY

TRUSTEES' ANNUAL REPORT

YEAR ENDED 31 DECEMBER 2024

Charitable Giving through Second Sunday collections

The Pastoral Committee proposes to the PCC which international, national and local charities should benefit from the cash collection taken on the second Sunday of each month. This does not include anything put into envelopes or the DONA machine.

2024

January	£113	Longfield
February	£90	Ripple Effect (save a cow)
March	£121	Water Aid (Glass jar raised a further £185)
April	£108	RSPB
May	£172	Christian Aid
June	£74	Greening Tetbury
July	£208	Dementia UK
August	£153	Sunflowers Suicide Support
September	£75	Thomas Talboys Trust
October	£166	Christian Aid
November	£89	Royal British Legion. The Remembrance Day service in the afternoon raised a further £415
December	£131	The Children's Society (a further £223 was raised from boxes, envelopes, donations and the Christingle service)

In October, we collected £315 for the Disasters Emergency Committee.

The committee is aware of the ongoing need to recruit an area coordinator for Christian Aid. We plan to organise a speaker from the charity who might encourage someone to come forward to take on the role. Going forward, the committee will consider fundraising activities for Christian Aid, particularly in May during the national Christian Aid week and tying in with Count on Nature/Loss and Damages.

Foodbank report for St Marys' Church

From 1st April 2024 to 31st December 2024, Cirencester Foodbank has provided 5,133 parcels to local people in hardship who could not afford the essentials. 2,300 of these went to children aged 16 and under. (This covers Cirencester, Tetbury and Fairford)

Sue Price-Rabantheng (Participation Lead) has continued to develop our Foodbank plus Hub in Tetbury, with local people who have become the Community Champions at the Foodbank. They have been out sharing information in the community in a variety of settings and locations through local events and meeting. They are now part of the volunteer Team and continue to provide a friendly space on Tuesday mornings for anyone to come in and chat over a coffee.

THE PAROCHIAL CHURCH COUNCIL OF THE ECCLESIASTICAL PARISH OF ST MARY THE VIRGIN AND ST MARY MAGDALEN, TETBURY

TRUSTEES' ANNUAL REPORT

YEAR ENDED 31 DECEMBER 2024

Their continued to be a huge increase in demand for support over the summer again this year. Sue and the Community Champions Team took part in the Trussell Trust national conversation, 'Bring it to the table', collecting stories of hardship and hope from across the patch on tablecloths. These were shared to influence future school holiday provision for local families, and for continued support of local Breakfast Clubs. They will be shared with local civic and Faith leaders in the Spring as we continue to look at ways in which we can tackle the challenges of hidden hardship in the community, together.

Over the Christmas period, the Foodbank gave out approximately 150 Christmas parcels in addition to the usual parcel provision. In Tetbury the Foodbank centre continues to open on Tuesdays at Christ Church from 11-1pm. The Foodbank continues to partner with Citizens Advice, so that there is always someone at the centre for clients to talk to if they are struggling with debts. The foodbank continues to work at providing advice and support to clients to help them overcome the issues that have led them into difficulties. Along with its Citizens Advice partners, volunteer Signposters connect local people with additional support. This is seeing increased financial gains, access to benefits and reducing the number of people needing repeat visits to the foodbank.

As a Foodbank, we want to take this opportunity to thank and recognise Sarah Parton, for her work and dedication in her work as part of the Volunteer Team and particularly as a Signposter. We welcome Christine Scott and Heather Woodcock as they join us to continue the work of the Foodbank in Tetbury.

Look out for our new logo as we enter a new season of work locally, together. Sue is working closely with the Staff, volunteers and Community Champions to embed the work she has been doing with them, before she steps down from post in March.

Sue Price-Rabantheng

WELCOMERS & COFFEE

The Welcoming team has worked very well this year with a number of people coming forward to be part of it. It is such an important part of our ministry of growing the church and we are very grateful to the team. They are:

Sue Sherwood
Lynn George
Darren Baker
Frances Collinson
Peter Leech
Pam Bird
Diana Challis
David and Liz Evans
Richard Mattick
Jan Hardy
Ian Thomas
Michele Maund
Alison Hesketh
Sue Thomas

THE PAROCHIAL CHURCH COUNCIL OF THE ECCLESIASTICAL PARISH OF ST MARY THE VIRGIN AND ST MARY MAGDALEN, TETBURY

TRUSTEES' ANNUAL REPORT

YEAR ENDED 31 DECEMBER 2024

Michael and Rosemary Bailey
Hilary Rowland

Grateful thanks goes to all those who prepare and serve refreshments after the service, with a wonderful opportunity to continue our fellowship as the formal worship ends. Please speak to Diana Sharp who continues to do the rota. There were 29 people on the rota last year and we are now down to 14 but when you need 3 people to help each week it is a struggle so please consider if you are able to help. Thank you!

Michele Maund

COMMUNICATIONS AND OUTREACH

Remit and overview

- To encourage and, as appropriate, be responsible for the effective use of communication methods to convey our vision: that our church community is a place of vibrant Christian faith, connecting with our local community in loving service, and drawing others to know the story of God's love for us and for the world.

Work goes on to **ensure effective communications**. Our Facebook page is well used, as witnessed by the number of people viewing services. Our website continues to be well used, while the "Keeping in Touch" emails provide weekly information and support and our posters and postcards provide information about what's on. Such communication has been further enhanced by the installation of a visual display unit to go under the tower, and welcome people with information about our church community.

In terms of wider communications, Poppy (mainly!) has continued to write for The Tetbury Advertiser as an opportunity to share news and reflections. We are now in regular contact with Tetbury Town Council to publicise events on its website via "Tetbury Town Events"; and also via the Facebook page "Experience Tetbury". Further work is being undertaken to explore if we can use free advertising grants from Google to raise our profile further.

The Communications and Outreach Committee has also produced training materials and resources for people wanting to publicise church events and has successfully secured Microsoft 365 for church use, which we feel may further enhance internal communications and team working going forward.

Revd Dr Steve Bullock (Committee Chair)

CIRENCESTER DEANERY REPORT 2024

1. Synod has agreed these Deanery Strategic Priorities
 - Build connections to our local communities and across the Deanery
 - Develop and implement Lay ministry and Leadership
 - Have an outward focus on mission, meeting people where they are
 - Define the role of clergy in this new landscape, recognizing the issues of a smaller number of people coming forward for ordained ministry
 - Addressing and sharing the challenges of buildings, Parish Share, efficient systems for

THE PAROCHIAL CHURCH COUNCIL OF THE ECCLESIASTICAL PARISH OF ST MARY THE VIRGIN AND ST MARY MAGDALEN, TETBURY

TRUSTEES' ANNUAL REPORT

YEAR ENDED 31 DECEMBER 2024

administration, funeral ministry, and faculties.

These priorities have evolved into 'The Deanery Strategic Plan (DSP)' which is now at the implementation phase. This is with full endorsement from the Bishops and Archdeacon.

Synod would appreciate all help that parishes can offer to support the plan. The solutions to the issues need to be found at grass roots and by working cooperatively.

2. Owing to retirements and 'movings on' there are now vacancies in: Thameshead, Tetbury, Cirencester and Ermine West and two new significant vacancies are about to be announced. Rev. Andrew Cinnamond, Rev Canon Graham Morris, and Rev Canon John Swanton are the present Area Deans.
 - Lay Chair: George Collins
 - Secretary: Claire Pearson supported by Maggie Dennis
 - Safeguarding: Rev'd Jackie Colburn
 - Appointment of General Synod member: Lay Canon Karen Czapieski
 - The office of Apportionment Officer remains vacant
 - The Rev'd Tim Hastie Smith [Bishop's Staff Team] serves on the Standing Committee
 - Peter Moore and Rosemary Bailey are Lay members of the Standing Committee as additional members to those listed above.
3. An extract of the latest minutes of the Deanery Synod gives a reflection of concerns and considerations needed about the future.

George Collins [Lay Chair] began with a slide show summarising our Deanery at the moment, one fifth of which is in vacancy with more to come. There has been little or no response to Church Times advertising. Parishes are working at being more imaginative when writing their profiles. Rev Canon Graham Morris said that a chaplaincy model tying posts to educational institutions had worked very well in Lichfield. Maggie Dennis felt that the recent resignation of Archbishop Justin Welby gives an opportunity to insist on better communications and more transparency in The Church. Our Deanery needs to ensure its own safe space and fill it with imaginative solutions. The Forest of Dean is using Lay Teams. Other Dioceses are floating priests over their Deaneries. Rev Adrian Beere pointed out that is the basis upon which he works. Our Bishops are willing to be pioneering.

It was emphasised that Laity and their decisions are vital to the future of the church.

4. However as always, we look forward with hope and the following certainly gives that.

For special note there is an important developing relationship with Monastery and Co – the Long Table in Cirencester in the old House of Fraser building on the High Street.

The Long Table is for meals to which you contribute what you can – they are for welcome, conversation and making connections

It is also a place of work and resources for families and children. It is also a shop of many developing talents.

All this work has the strong support of the Diocese and the Deanery.

Please visit when you are in Cirencester for a flavour of what it is achieving and its potential. Have a coffee!

THE PAROCHIAL CHURCH COUNCIL OF THE ECCLESIASTICAL PARISH OF ST MARY THE VIRGIN AND ST MARY MAGDALEN, TETBURY

TRUSTEES' ANNUAL REPORT

YEAR ENDED 31 DECEMBER 2024

Treasurer's Report on the Financial Statements for 2024

The financial statements for the year ended 31 December 2024 have been prepared on a receipts and payments basis and have been independently examined. The Examiner's Certificate is included with the accounts, which comprise

1. A statement of receipts and payments for the year ended 31 December 2024
2. A statement of assets and liabilities as at 31 December 2024
3. Notes amplifying matters of detail.

Overview

During 2024 total funds increased from £127,707 to £130,614.

The results in 2024 were boosted by the receipt of an unrestricted £20,000 legacy from the estate of Jennifer Grant-Rennick. The PCC's policy is not to use legacies for general running expenses but to help fund significant development projects, which will add to the life and mission of the church, whether buildings, equipment or staff. The PCC is currently considering how best to use this legacy.

General fund

In 2024, receipts of the general fund exceeded payments by £3,242, and an increase of £985 in the value of the general fund's CBF Investment Fund shares increased the surplus on the general fund to £4,227. Without the receipt of the legacy mentioned above, there would have been a loss of £15,773 on the general fund.

Receipts of the general fund were £5,586 higher in 2024 than in 2023, thanks to the legacy. Fund raising activities performed very strongly with the summer fete, Christmas fayre and the tower tours on Woolsack Day being very successful. Thanks are due to the social committee, the bellringers and all who helped make fund raising activities such a success this year. The church shop had another good year.

Conversely, planned giving, collections, donations, grants, income tax recovered and parochial fees for weddings and funerals all fell compared with 2023.

Total expenditure charged to the general fund increased by £4,486 compared with 2023. The largest single item of expenditure was the parish share of £58,846 which contributes primarily to the cost of ministry in this parish but also includes a contribution to the costs of the national Church of England.

£5,200 was spent on work leading up to the production of a report on the possibilities for reordering the church building and on architects' drawings.

Friends Fund

The Friends Fund (the funds of which can only be spent on the preservation and improving of the church building and grounds) decreased in value by £2,403 over the course of 2024. £5,903 was spent from the Friends Fund on repairs and maintenance in the year. The main project was the inspection of the grotesques on the tower (cost £1,776). Electrical repairs cost £1,429.

In November 2024, the PCC received from the church architect the latest quinquennial report on the church fabric. This recommended a range of repairs during the quinquennial period which have yet to be costed but are likely to exhaust much of the remaining balance of the Friends Fund.

THE PAROCHIAL CHURCH COUNCIL OF THE ECCLESIASTICAL PARISH OF ST MARY THE VIRGIN AND ST MARY MAGDALEN, TETBURY

TRUSTEES' ANNUAL REPORT

YEAR ENDED 31 DECEMBER 2024

Eileen Davis fund

The Eileen Davis Fund pays part of the costs of the PCC's schools and family worker. It received a grant of £1,000 from the Sylvanus Lysons charity in 2024 which was used to pay salary costs, leaving a balance of £nil at the end of the year. The Sylvanus Lysons charity has now fulfilled its commitment to provide grant funding so that the costs of the PCC's schools and family worker will now be met by the general fund.

Music Funds

The PCC held £7,500 in a music fund at the end of the year. During 2024 money was spent on membership of the Royal School of Church Music (£133) and repairs to the electric organ (£225).

The Alison Parkhouse Fund exists to pay for an organ scholar and the James Cowley Fund exists to pay for a singing scholarship. There is currently no organ scholar or singing scholar. The balances of the funds were £7,391 and £3,371 at the end of the year.

Eco Church

The Ecochurch Fund holds money raised from the annual Count on Nature Day and from plant sales in the churchyard which can be used for environmentally beneficial projects. During the year money was spent on pedestals and urns for church flowers, flowers and seeds. The balance of the fund at the end of the year was £1,710.

Reserves policy

The PCC seeks to maintain a minimum balance of £45,000 in its general fund, representing a reserve equivalent to three months' estimated expenditure on the general fund, including salaries but excluding fabric expenditure, (£30,000) and working capital of £15,000. The purpose of holding a reserve in the general fund is to cover

- (a) A temporary or permanent loss of income, such as the death of a major donor or another pandemic lockdown; or
- (b) A temporary or permanent increase in expenditure, such as the dramatic increase in electricity costs we saw in 2022

until income can be increased, for example by holding a stewardship campaign, or expenditure cut to cover the shortfall.

The PCC also seeks to maintain a minimum balance of £20,000 for fabric purposes. The purpose of maintaining a minimum balance for fabric purposes is to allow for repairs to the fabric to be carried out if an unforeseen but urgent need for them emerges.

At the end of the year, the PCC had total reserves of £130,614 of which £77,460 were held in the general fund and are therefore unrestricted and £53,154 were restricted. The breakdown of the restricted funds is shown in note 3. It is likely that much of the difference between the total reserves held in the general and Friends funds and minimum balances which the PCC seeks to maintain will be used to pay for the repairs highlighted in the quinquennial report mentioned under "Friends Fund".

Prospects for 2025

The estimates for 2025 tabled at the PCC's January 2025 meeting forecast that general fund income would fall short of general fund expenditure by around £9,000 in 2025, although the stewardship campaign begun in November 2024 should as a result of increases since this estimate was tabled raise

**THE PAROCHIAL CHURCH COUNCIL OF THE ECCLESIASTICAL PARISH OF
ST MARY THE VIRGIN AND ST MARY MAGDALEN, TETBURY**

TRUSTEES' ANNUAL REPORT

YEAR ENDED 31 DECEMBER 2024

a further £2,000 (including gift aid) in 2025 to reduce this deficit. The results for the Friends Fund will depend on how quickly the repairs recommended in the quinquennial report are carried out.

Thanks

My thanks are due to all those who have given me so much help during the year, particularly Ros Tildesley who has helped with counting and banking the collections, Richard Mattick who claims gift aid, Diana Sharp as local agent for parochial fees and Diana Challis for managing the shop and dealing with good causes.

Mike Hardwick (Church Treasurer)

Michael Hardwick

Approved by the Parochial Church Council on 11 March 2025 and signed on their behalf by:

THE PAROCHIAL CHURCH COUNCIL OF THE ECCLESIASTICAL PARISH OF ST MARY THE VIRGIN AND ST MARY MAGDALEN, TETBURY

REFERENCE & ADMINISTRATIVE INFORMATION

YEAR ENDED 31 DECEMBER 2024

The Parish Church of St Mary the Virgin and St Mary Magdalen is situated at the end of Church Street, Tetbury. It is part of the Diocese of Gloucester within the Church of England.

The correspondence address is The Parish Office, St Marys' Church, Church Street, Tetbury, Gloucestershire GL8 8JG. The parish is part of the United Benefice with Beverston, Long Newnton and Shipton Moyne, and the post of Incumbent is currently vacant.

The Parochial Church Council (PCC) of the Ecclesiastical Parish of St Mary the Virgin and St Mary Magdalen, Tetbury, is a Registered Charity, number 1132325.

Trustees

The PCC members, and consequently Trustees of the charity, who have served since 1 January 2024 until the date this report was signed were:

The Revd Poppy Hughes	(Chair, Ex Officio member to September 2024)
The Revd Pauline Setterfield	(Associate Priest, Ex Officio member)
The Revd Steve Bullock	(Curate, Ex Officio member)
Sarah Parton	(Reader, Ex Officio member to April 2024)
Rosemary Bailey	(Deanery Synod to April 2026, Ex Officio member)
Darren Baker	(from April 2024 to April 2027)
Diana Challis	(to April 2025)
Dan Fletcher	(from April 2024 to April 2027)
Michael Hardwick	(Treasurer, to April 2026)
Alison Hesketh	(from April 2024 to April 2027)
Mary Hinton	(from April 2024 to April 2027)
Richard Mattick	(to April 2026)
Michele Maund	(from April 2024 to April 2027)
Kevin Painter	(from April 2024 to April 2027)
Hilary Rowland	(Churchwarden, Ex Officio member)
Sue Thomas	(Churchwarden, Ex Officio member)
Sarah Williams	(Deanery Synod to April 2026, Ex Officio member)
Heather Woodcock	(from April 2024 to April 2027)

The PCC met on eight occasions in 2024. The PCC has met twice in 2025 up to the time of this report, the same as the equivalent period in 2024.

Independent Examiner

Joshua Kingston, BSc (Hons) ACA
Burton Sweet Limited
The Clock Tower
5 Farleigh Court
Old Weston Road
Flax Bourton
Bristol BS48 1UR

**THE PAROCHIAL CHURCH COUNCIL OF THE ECCLESIASTICAL PARISH OF
ST MARY THE VIRGIN AND ST MARY MAGDALEN, TETBURY**

INDEPENDENT EXAMINER'S REPORT TO THE TRUSTEES

YEAR ENDED 31 DECEMBER 2024

I report to the trustees on my examination of the accounts of The PCC St Mary's Tetbury (the Charity) for the year ended 31 December 2024.

Responsibilities and basis of report

As the charity trustees of the Charity you are responsible for the preparation of the accounts in accordance with the requirements of the Charities Act 2011 ('the Act').

I report in respect of my examination of the Charity's accounts carried out under section 145 of the 2011 Act and in carrying out my examination I have followed all the applicable Directions given by the Charity Commission under section 145(5)(b) of the Act.

Independent examiner's statement

I have completed my examination. I confirm that no material matters have come to my attention in connection with the examination giving me cause to believe that in any material respect:

1. accounting records were not kept in respect of the Charity as required by section 130 of the Act; or
2. the accounts do not accord with those records; or
3. the accounts do not comply with the applicable requirements concerning the form and content of accounts set out in the Charities (Accounts and Reports) Regulations 2008 other than any requirement that the accounts give a "true and fair view" which is not a matter considered as part of an independent examination.

I have no concerns and have come across no other matters in connection with the examination to which attention should be drawn in this report in order to enable a proper understanding of the accounts to be reached.

Joshua Kingston

Joshua Kingston, BSc (Hons) ACA
Burton Sweet Limited
The Clock Tower
5 Farleigh Court
Old Weston Road
Flax Bourton
Bristol BS48 1UR

Date: 11 March 2025.....

**THE PAROCHIAL CHURCH COUNCIL OF THE ECCLESIASTICAL PARISH OF
ST MARY THE VIRGIN AND ST MARY MAGDALEN, TETBURY**

STATEMENT OF RECEIPTS AND PAYMENTS

YEAR ENDED 31 DECEMBER 2024

	General Fund	Restricted funds	2024 All funds	2023 All funds (Restated)	Notes
	£	£	£	£	
Income					
Voluntary income					
Planned giving	48,337	795	49,132	51,460	
Collections, donations and other giving	13,835	1,782	15,617	36,658	4
Income tax recovered	14,240	254	14,494	16,556	
Legacies	20,000	11	20,011	1,500	
Activities for generating funds					
Shop sales	8,751	-	8,751	8,534	5
Income from properties	3,897	-	3,897	5,147	
Annual fete/events	6,243	1,248	7,491	4,423	6
Investment income					
Dividends and interest	1,679	2,113	3,792	3,138	
Income from charitable activities					
Parochial fees	4,495	-	4,495	6,877	
Other income					
Other	299	4,115	4,414	7,312	
Total income	121,776	10,318	132,094	141,605	

**THE PAROCHIAL CHURCH COUNCIL OF THE ECCLESIASTICAL PARISH OF
ST MARY THE VIRGIN AND ST MARY MAGDALEN, TETBURY**

STATEMENT OF RECEIPTS AND PAYMENTS

YEAR ENDED 31 DECEMBER 2024

	General Fund	Restricted funds	2024 All funds	2023 All funds (Restated)	Notes
	£	£	£	£	
Expenditure					
Charitable activities					
Donations/grants to charities	(700)	-	(700)	(730)	7
Mission and evangelism	(766)	-	(766)	(2,020)	
Parish share	(58,846)	-	(58,846)	(57,000)	
Clergy expenses	(2,916)	-	(2,916)	(2,984)	
Church running expenses	(16,139)	(6,317)	(22,456)	(36,107)	8
Cost of raising funds	(5,410)	-	(5,410)	(3,413)	
Running costs					
Administration costs (including staff costs)	(16,309)	(1,000)	(17,309)	(16,073)	9
Other	(11,047)	(3,100)	(14,147)	(15,809)	10
Governance costs	(1,188)	-	(1,188)	(1,080)	
Major expenditure					
Reordering project	(5,200)	-	(5,200)	(3,800)	11
Capital purchases/additions	(1,073)	(565)	(1,638)	(547)	12
Total expenditure	(119,594)	(10,982)	(130,576)	(139,563)	
Net (expenditure)/income before transfers and gains	2,182	(664)	1,518	2,042	
Transfers between funds	1,060	(1,060)	-	-	3
Net (expenditure)/income before gains	3,242	(1,724)	1,518	2,042	
Gains/(Losses) on investment assets	985	404	1,389	5,219	13
Net movement in funds	4,227	(1,320)	2,907	7,261	
Funds brought forward at 1 Jan 2024	73,233	54,474	127,707	120,446	
Cash and investment assets carried forward at end of year	77,460	53,154	130,614	127,707	

**THE PAROCHIAL CHURCH COUNCIL OF THE ECCLESIASTICAL PARISH OF
ST MARY THE VIRGIN AND ST MARY MAGDALEN, TETBURY**

STATEMENT OF ASSETS AND LIABILITIES

YEAR ENDED 31 DECEMBER 2024

	General fund	Restricted funds	Total 2024	Total 2023 (Restated)	Notes
	£	£	£	£	
Cash funds					
Lloyds No 1 account	8,626	7,755	16,381	21,896	
Lloyds No 2 account	1,583	-	1,583	1,894	
Lloyds No 3 account	-	15	15	365	
CCLA Deposit account	23,218	27,336	50,554	42,555	
Cash in hand	-	-	-	305	
Total cash funds	33,427	35,106	68,533	67,015	
Investment Assets					
CCLA CBF Investment Fund shares at market value	44,033	18,048	62,081	60,692	
Total cash and investment assets	77,460	53,154	130,614	127,707	
Debtors	379	-	379	444	
Assets retained for church use					
Shop stock	6,151	-	6,151	5,506	5
Liabilities					
Creditors	761	-	761	990	

THE PAROCHIAL CHURCH COUNCIL OF THE ECCLESIASTICAL PARISH OF ST MARY THE VIRGIN AND ST MARY MAGDALEN, TETBURY

ADDITIONAL INFORMATION & AMPLIFIED NOTES

YEAR ENDED 31 DECEMBER 2024

The information on the following pages does not form part of the statutory financial statements which are the subject of the independent examiner's report on page 19.

1. Basis of preparation

The financial statements of the PCC have been prepared in accordance with the Church Accounting Regulations 2006 using the Receipts and Payments basis.

2. Collections for Good Causes

	2024 £	2023 £
Balance brought forward	1,015	-
Collections	4,429	10,826
Passed to Good Causes	5,238	9,811
Awaiting disbursement	206	1,015

Collections for good causes are held as agent on behalf of the relevant charity and are excluded from the receipts and payments accounts and the disclosed cash balances at the year end in line with Charities Statement of Recommended Practice.

3. The movements in restricted funds during the year were

Restricted Funds	Use	Balance at 1 January 2024 £	Income £	Expenditure £	Investment Gains £	Transfer £	Balance at 31 December 2024 £
Alison Parkhouse	Organ scholarship	7,066	226	-	99	-	7,391
Ecochurch	Environmental Projects	1,117	1,248	(655)	-	-	1,710
Eileen Davis	Children and Family Worker	-	1,000	(1,000)	-	-	-
Friends	Preservation and improving of church building and grounds	35,585	3,195	(5,903)	305	-	33,182
Fryer	Upkeep of fabric of church and churchyard	-	11	(11)	-	-	-
James Cowley	Singing Scholarship	3,204	167	-	-	-	3,371
Music	Music	7,502	356	(358)	-	-	7,500
Parish weekend	Parish retreat to be held in March 2025	-	4,115	(3,055)	-	(1,060)	-
Total		54,474	10,318	(10,982)	404	(1,060)	53,154

THE PAROCHIAL CHURCH COUNCIL OF THE ECCLESIASTICAL PARISH OF ST MARY THE VIRGIN AND ST MARY MAGDALEN, TETBURY

ADDITIONAL INFORMATION & AMPLIFIED NOTES

YEAR ENDED 31 DECEMBER 2024

The transfer from the parish weekend fund was to reimburse the general fund for the deposit which was paid from the general fund for accommodation before any money had been received from those attending the parish weekend.

4. Collections, donations and other giving

Collections, donations and other giving comprise:

	General £	Restricted £	2024 £	2023 £
Collections	3,711	-	3,711	5,590
Donations	10,124	-	10,124	24,618
Grants	-	1,782	1,782	6,450
Total	13,835	1,782	15,617	36,658

In 2024, grants received were as follows:

1. £1,000 from the Sylvanus Lysons charity towards the cost of employing our family worker
2. £782 from DCMS to meet the cost of VAT on repair work

5. Shop account

	2024 £	2023 £
Sales	8,751	8,534
Less stock consumed	3,917	3,039
Less expenses	20	20
Net surplus	4,814	5,475

The statement of receipts and payments does not include the value of stock in hand at 31 December 2024 of £6,151 (£5,506 on 31 December 2023).

6. Annual Fete/Events

Income and expenses from events comprise:

Event	Income £	Expenses £	Surplus 2024 £	Surplus 2023 £
General Fund				
Tower tours on Woolsack Day	418	-	418	-
Summer Fete	2,579	378	2,201	1,076
A Capella Concerts	423	-	423	489
Christmas Market	2,690	245	2,445	1,373
Christmas lights switch on stall	133	25	108	-
Total General Fund	6,243	648	5,595	2,938
Restricted Funds				
Plant sales and Count for Nature Day	1,248	-	1,248	773
Total (All Funds)	7,491	648	6,843	3,711

**THE PAROCHIAL CHURCH COUNCIL OF THE ECCLESIASTICAL PARISH OF
ST MARY THE VIRGIN AND ST MARY MAGDALEN, TETBURY**

ADDITIONAL INFORMATION & AMPLIFIED NOTES

YEAR ENDED 31 DECEMBER 2024

7. Donations and Grants to charities

Grants from the general fund comprise Tetbury in Bloom (£500), Tetbury Area Churches Together (£150) and Royal British Legion (£50).

8. Church running expenses

Church running expenses comprise:

	General £	Restricted £	2024 £	2023 £
Minor repairs cleaning and maintenance	111	6,139	6,250	16,750
Worship costs	3,454	-	3,454	2,824
Flowers	-	45	45	-
Music and licences	968	133	1,101	871
Heating and lighting	11,487	-	11,487	15,612
Water rates	119	-	119	50
Total	16,139	6,317	22,456	36,107

9. Administration costs

Administration costs comprise:

	General £	Restricted £	2024 £	2023 £
Salaries and wages	14,635	1,000	15,635	14,315
Administration	1,674	-	1,674	1,758
Total	16,309	1,000	17,309	16,073

10. Other costs

The largest items under "other costs" are:

Insurance - £9,007 (2023 - £8,505)

Windmill Farm Conference Centre for parish weekend - £4,676 (2023 - £6,998).

£4,115 of the payments to Windmill Farm Conference Centre were paid out of payments received from those attending the parish weekend. The balance of £561 was paid from the general fund.

11. Reordering report

Pursuant to the procedure set out in section 185 of the Charities Act 2011, a resolution passed at the PCC meeting held on 17 January 2023 and a written agreement with the PCC, £2,200 was paid to Revd P Hyson during the year for work leading up to the production of a report on the possibilities for reordering the church building (£3,800 was paid in 2023). Revd P Hyson is the husband of Hilary Rowland, one of the trustees.

**THE PAROCHIAL CHURCH COUNCIL OF THE ECCLESIASTICAL PARISH OF
ST MARY THE VIRGIN AND ST MARY MAGDALEN, TETBURY**

ADDITIONAL INFORMATION & AMPLIFIED NOTES

YEAR ENDED 31 DECEMBER 2024

12. Capital purchases

Capital purchases comprise: -

	£
Garden pedestals and urns	525
Mobile phone for office	70
Pew Bibles	150
Projector	853
Reusable glasses	40
Total	1,638

The garden pedestals and urns and reusable glasses were paid for from restricted funds, the other items from the general fund.

Fixed assets retained for church use are not required to be valued in the statement of assets and liabilities.

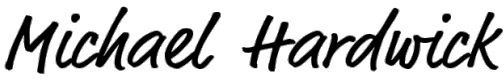
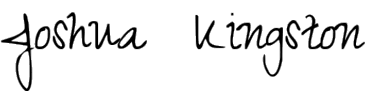
13. Gains /(losses) on investment assets

These are increases or decreases in CBF Investment Fund share values during the year.

Document Details

Title	Accounts for signature
File Name	Church - Draft 2024 Accounts (BS annotated).pdf
Document ID	e2c3aead9e2d4d9cbd029a1e1f565056
Fingerprint	472282066a4b2d3442d9f1b275a7a925
Status	Completed

Document History

Document Created	Document Created by Karen Chelton (karen@burton-sweet.co.uk) Fingerprint: 35337a7ebf9b8098e537ab1fd18df8eb	Mar 10 2025 08:16AM UTC
Document Sent	Document Sent to Michael Hardwick (hardwickm@btinternet.com)	Mar 10 2025 08:16AM UTC
Document Viewed	Document Viewed by Michael Hardwick (hardwickm@btinternet.com) IP: 86.153.140.39	Mar 11 2025 09:47PM UTC
Document Signed	Document Signed by Michael Hardwick (hardwickm@btinternet.com) IP: 86.153.140.39 	Mar 11 2025 09:51PM UTC
Document Sent	Document Sent to Joshua Kingston (josh.kingston@burton-sweet.co.uk)	Mar 11 2025 09:51PM UTC
Document Viewed	Document Viewed by Joshua Kingston (josh.kingston@burton-sweet.co.uk) IP: 185.249.213.98	Mar 17 2025 09:58AM UTC
Document Signed	Document Signed by Joshua Kingston (josh.kingston@burton-sweet.co.uk) IP: 185.249.213.98 	Mar 17 2025 09:58AM UTC
Document Completed	This document has been completed. Fingerprint: 472282066a4b2d3442d9f1b275a7a925	Mar 17 2025 09:59AM UTC