

St Mary's Court  
The Broadway  
Old Amersham  
Bucks  
HP7 0UT

t: 01494 765428  
e: [mailto@cansdales.co.uk](mailto:mailto@cansdales.co.uk)  
w: [cansdales.co.uk](http://cansdales.co.uk)

Mrs G McAlister  
Beaconsfield Team Ministry  
The Parish Office  
The Fitzwilliam Centre  
Windsor End  
Beaconsfield  
Bucks  
HP9 2JW

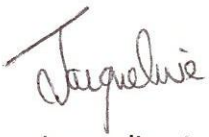
31 May 2024

Our Ref: BEA021

Dear Gillian

As requested, please find enclosed a copy of the fully signed financial statements for the year ended 31 December 2022 for your records.

Yours sincerely



Jacqueline Ingram



# PCC ANNUAL REPORT 2022





# A View from the Team...

Once again in 2022, fellowship and teamworking has enabled us to achieve more over the last year than we would have done if our three churches were working separately in our town.

There were two major team projects which characterised our year of working together:

## Hospitality

The Dove Café opened to the public in February 2022, with a public launch on 14th May. The building and development of such a major capital project at St Thomas', was only made possible by the support of all three churches and of individuals from them, who have given generously of their time and money. Our team of volunteers, drawn from all three churches, plus several others (not all churchgoers) were well co-ordinated in support of Tanya Palmer, our experienced Café Manager.

The new café quickly became known as a favourite meeting place for parents of pre-school children.

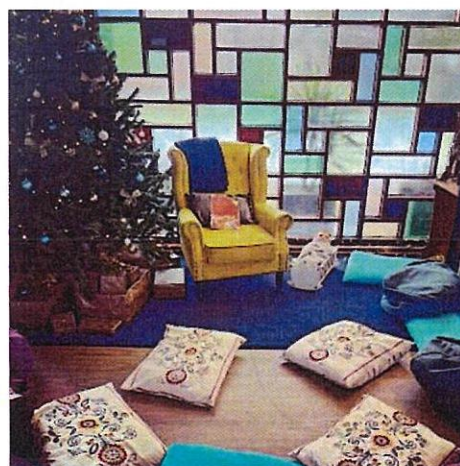
Customer numbers and sales figures began modestly but soon began to rise month upon month and continued to grow throughout the year. Excluding building costs the café broke even in July, more than a year ahead of projections.

In September, Jodie Brown succeeded Tanya as Café Manager, bringing new energy and vision. Her ability to adapt to the needs of other groups has forged several mutually beneficial alliances and she keeps us all updated daily through social media.

And members of all three of our churches remain crucial to the success, planning and daily operational running of the café.

The build up to Christmas gave us opportunities to try engaging café customers in new ways, with several positive results. At the end of the year, two major challenges loomed: our growth in sales meant we attracted VAT and the unexpected hike in energy prices meant our overhead costs soared.

Strategies to mitigate those two effects took us into the new year.





## Musical Engagement

The team-wide music project has already started to build relationships with local schools and local musicians, professionals, amateurs and children all included. There have already been several concerts in our churches and expressions of interest from key musical contacts.



A newsletter informs followers about much of what is happening. There have been ticketed concerts, fundraising concerts and concerts for children to try out playing in front of an audience. And there's much more to follow in 2023!

The Platinum Jubilee and then the death of Queen Elizabeth II were both occasions when the team worked together, serving the needs of our community and nation both to celebrate and to mourn.

The annual Beaconsfield Country Fayre was another success this year and, as usual, made a significant financial contribution to many charities and community groups. But Sylvia Jones and the team involved are facing huge challenges to keep this event going.

Like so many other churches and organisations, the Team has continued to face ongoing financial challenges during 2022, with all three churches budgeting for a loss. The significant shortfall of income against expenditure in the year continues to be a cause for concern. Clearly, a priority for all three churches in 2023 is to find ways to address these challenges.

We also continue to face the challenge of having no full-time priest at St Mary's, nor a Team Rector for the team. Again, this would unquestionably have proved much more difficult if not for the collaborative support of our team of clergy and lay leaders.

After consultation with the PCC, DCCs, congregations and the diocese, it was decided to reshape our recruitment expectations. We realised, happily, that Revd Sharon Roberts might well be called to serve us as Team Rector, thus making it possible for a new Team Vicar at St Mary's to focus their efforts on one congregation, while continuing to build on the good relationships of leaders across the team.

And so we look ahead to new beginnings in 2023, to welcoming a new Rector for the Team and a new Team Vicar for St Mary's. And for the contribution we each of us can make to both work ever more closely together with fellow Christians across our town and to look ever more widely outwards to serving our community and our world.

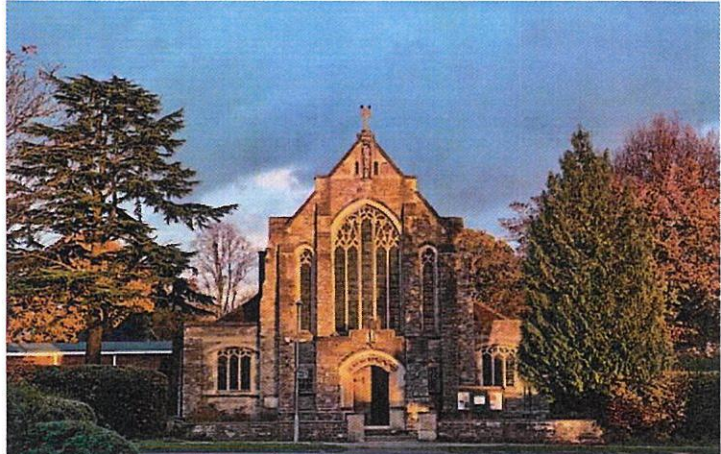
Revd Michael Johnson



# St Michael's

2022 felt like a coming home to what was "normal" again. I was very conscious of this, arriving as I did at St Michael's just six months before Covid hit and hardly being able to remember what "normal" was!

We took things slowly but surely, with the reinstatement of much that was familiar but the retention of patterns introduced because of Covid which seemed to serve us well as we moved forward into our "new normal".



So during the year it was good to reintroduce coffee after our 10am service, but now held in church rather than the CCRC to encourage people to stay on without having to leave one building and enter another. We also reintroduced various rotas (where would the church be without them!) but also tried to simplify these where we could. As ever with church rotas, there is room for more volunteers, please don't be shy to come forward. The Welcome Team is made up, largely, of DCC members, so you can get to know them and they can know you (although the benefit of being a fairly small church is that St Michael's people do mostly know one another anyway!). DCC members also oversee the cleaning of the church, now undertaken jointly by volunteers and a cleaning company. But it would be good to have more people on board. Also reintroduced into our worship are intercessors, offering their prayers on behalf of all each Sunday, readers of the scripture of the day, flower arrangers who keep the church looking so beautiful and our small Pastoral Care Team of, alongside me, Hazel Chow, Lorraine Johnson and Judi Burch. As ever, my thanks to everyone who supports St Michael's with their service, their prayers or their financial giving.

Our worship pattern continued as it had evolved after lockdown – sung Holy Communion at 10am each Sunday and a said service at 9am on Wednesday. We are indebted to Cathy Smith who continues to lead and preach at both the 1st Sunday and 3rd Sunday services, the former being Common Worship and the latter Prayer Book. 2gether All-Age Communion remains popular on 2nd and 4th Sundays. Given that these different offerings seem equally popular, we have felt no need to vary the mix. A re-introduction in 2022, though, was Early Birds at 9.15 on the first Sunday of the month, which enables us to cater for very young families, as well as the slightly older ones at 2gether. St Michael's worship in 2022 was totally "Zoom free" which felt liberating to many but perhaps a loss to those who aren't mobile, and so we are grateful that our friends at St Mary's continue to live stream their services each week to keep people connected.



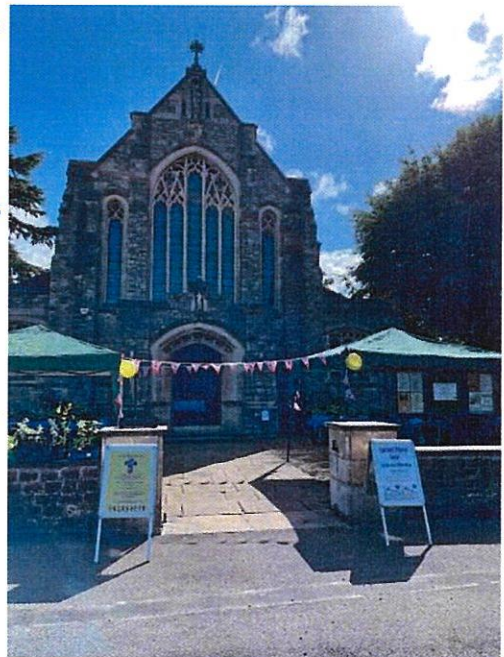
## PCC ANNUAL REPORT 2022

Hazel has had a very busy year, especially wearing her Town Chaplain hat, where she has shouldered responsibility for many of the services previously led by the Team Rector. She continues to serve not just St Michael's but other churches in the town, especially the Free Methodists. I am sure neither Hazel – nor any of us – envisaged that 2022 would completely pass without the appointment of a new Rector for St Mary's and Team Rector for Beaconsfield. I notice that I wrote in last year's Chairman's Report "A major excitement for 2022 will, of course, be the appointment of a new Team Rector and Rector of St Mary's – all prayers for that particular journey to unfold and arrive....". Well, we are still waiting for that arrival except that now – completely unforeseen last year – we have split out the two roles and await the arrival of a Team Vicar for St Mary's alongside my assuming the mantle of Team Rector. This is a role I commit to fulfilling diligently but very much with a "light touch" for we are blessed with talented leaders – ordained and lay – and this will very much continue to be a journey of moving forward together, side by side, as Team.

Our DCC membership increased with the appointment at last year's ACM of Zoe Lawrence and Annie Bennett, with Annie (along with Emily Lambourne) appointed into the additional role of Assistant Churchwarden.

Our three Assistant Churchwardens (Mary Bischoff completes the trio) have designated areas of responsibility, with Mary overseeing buildings, Annie the church grounds and Emily being at the forefront of Communications in its various guises. Daphne has been, as ever, the fount of all knowledge and wisdom as Churchwarden, and we were grateful to Graham Skinner for volunteering to be DCC Minutes Secretary, a role he fulfils so efficiently.

St Michael's undertook two major projects during 2022. In July the church floor was completely renovated, thanks to a generous grant from the St Michael and All Angels (Beaconsfield) Charitable Trust, and various items of church



furniture were also renovated at the same time, enabling the church as a whole to look loved and deeply cared for.

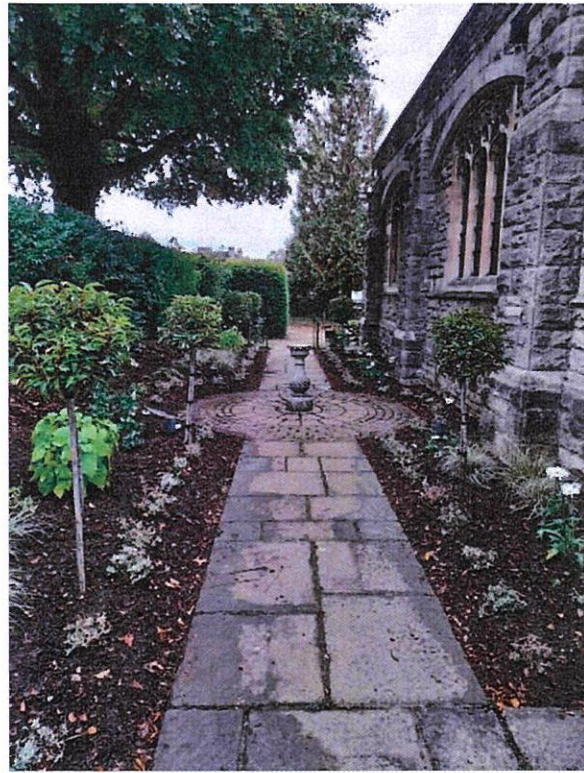
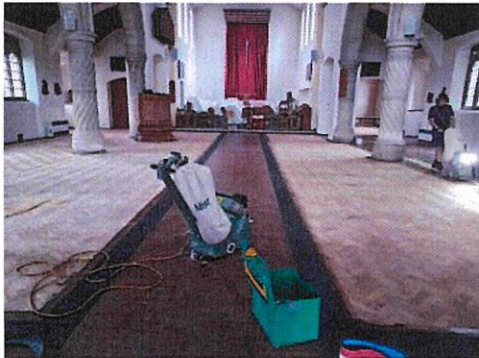
The transformation has amazed everyone who has seen it, it is quite awesome to see the floor as it would have looked in 1916 when it was laid in the nave, or the early 1960's when the intricate floor of many different hardwoods was laid in the Lady Chapel.

While the church was closed for this work to be carried out, we worshipped with St Mary's or St Thomas's on Sundays and in the Parsonage garden on Wednesday mornings, which was a very special experience, with birdsong joining in our prayers!



## PCC ANNUAL REPORT 2022

In October the Garden of Remembrance was replanted, with much hard work having been undertaken in the weeks before to clear the site and work organic compost into the borders. Many thanks to Liz Webster, who designed the garden pro bono for us, to Annie Bennett for overseeing the project, and to those who worked in the garden or made donations to cover the cost..



Finally, although this might seem a strange note to end on, in September we twinned all the toilets in the Hall and CCRC. This means that each of our loos contains a framed picture of a toilet in a developing country made possible by our “twinning” donation. None of them look like ours, of course, but they are, quite literally, a life-saver for the villages in which they have been built. Next time you “pay a visit”, take note and do consider twinning your own toilet at home! What We Do - Toilet Twinning

We travel into 2023, then, with hope and gratitude. Hope for what will be - the exciting adventure which will unfold before us – and gratitude for God’s grace which infills us and enables us to do His work and sing His praise in this place. May the Holy Spirit continue to guide us so that our journeys of love and understanding can ever deepen and grow.

Revd Sharon Roberts



# St Mary's

At St. Mary's we began 2022 full of hope our new Team Rector and Rector of St. Mary's would be appointed by Easter. That was not God's will. The vacancy group prayed, considered, and made some very difficult decisions, but we firmly believe we enter 2023 on the right path. Much work has been carried out with dedication, planning, writing and designing profiles. As we write we are advertising for a Team Vicar at St. Mary's, a new direction with new hope and new beginnings.

In spite of this 2022 was a challenging year. We were tested in ways we could not have imagined. Have we grown, have we developed as a worshipping community. We believe so as we gradually returned to as near 'normal' as we felt able.

## Highlights of 2022

We have been able to bring back elements of our services that we all missed. The return of the offertory, plate collections and more recently our young servers

We pulled together in helping the wider community celebrate the Queen's Platinum Jubilee with displays and music and, sadly, commemorating HM The Queen's unstinting service when she died in September 2022

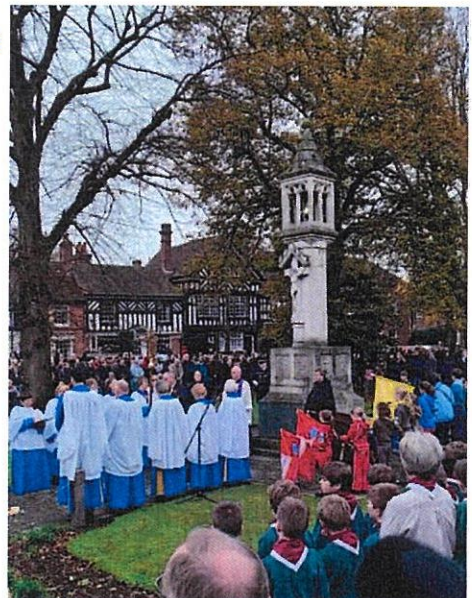
We continue to perform as the civic church in so many ways including the annual Remembrance Services which are appreciated by all

Choral Evensong has been appreciated.

The music vision has played a key part in worship and concerts. Our choir have developed and inspired us with their singing under the leadership of Aaron King

## The DCC focused on

- Allowing our worship to gradually return to pre-covid normality, with much thought and prayer
- Considering the work of the DCC and how we could implement our work and support the congregation
- The vision and growth of music particularly the organ project
- The implementation of the repairs needed following the 2020 Quinquennial Report and other building works in church and Fitzwilliams Centre
- Safeguarding and a report from our Safeguarding officer



## PCC ANNUAL REPORT 2021

- Finance and stewardship under the guidance of David Smyth as Treasurer
- Reporting on the recruitment of a Team Rector

### Reflections on Worship

Our pattern of services each week:

1st Sunday 8.00 am Holy Communion BCP 10.00 am Family Service

2nd Sunday 10.00 am Holy Communion

3rd Sunday 10.00 am Holy Communion 6.30 Choral Evensong

4th Sunday 8.00 am Holy Communion BCP 10.00 am Holy Communion

5th Sunday 10.00 am Holy Communion

Weekdays 9.00 am Thursday morning prayer

Step by step since all government restrictions were lifted in early 2022, we have been able to bring back elements of our worship:

- Compulsory wearing of masks was lifted at the end of April with the priest remaining masked to give communion by intinction until later in the year
- The choir returned to processing in singing in July along with the processing of the gospel
- Deacons at 10am returned in August
- Altar servers once a month at 10am services in December
- The offertory collection in the Autumn
- The offertory procession on Remembrance Sunday
- 8.00am deacons returned from January 2023
- Many appreciated the Bible Course in spring

The final element needing to be brought back is the common cup.

As the year progressed congregations grew in number and strength. It was wonderful to see old faces return to the fold and for new younger families come to our family services and junior church group. Christmas services for 2022 were better attended than in 2021 with the Crib Service back to full capacity. The attendance was reflected in the improved collections for our Christmas charities. Schools visited and had end of year and carol services with us, we celebrated and lamented with civic services for Jubilee, Death of the Queen and Remembrance Sunday.



Weddings and baptisms were numerous keeping the clergy team busy with these joyous occasions of celebrations which had been postponed or delayed in lockdown.

Sadly, we had many funerals to conduct and felt the loss of too many of our own church family in that number.



### **Family Services and Junior Church**

We are delighted to report a year of happy worship with families on first Sundays each month. Numbers grew during the year, as we followed the theme of Jesus saying “I am”. We looked at the bread of life with sour dough, the vine with a prayer tree and I am the light of the world among others. It proved a happy time with enthusiasm for playing instruments and waving flags. Junior Church has also developed with a wonderful team of lay helpers, who research, follow the gospel story and have fun painting or doing exciting crafts with the children and we are delighted to welcome some newcomers. We pray they take away a seed of faith from their time with us.



### **Pastoral activities**

The pastoral care team saw two of its members step back (one returned to full time work and one moved away). There is one new person training to join the team. Safeguarding training was updated across the team, and a general review of policy and procedure was undertaken by Ann-Marie Davis, the Parish Safeguarding Officer and the wardens at the end of 2022. The team continue to support our congregation in times of need and illness. We have six in the home communion team and this is taken to residents of Bradbury House at Easter and Christmas.

### **St Mary's Toddler Group**

The toddler group which has been running continually for nearly 51 and a half years meets every Wednesday afternoon during term time in the FWC. The group is run by a team of 9 volunteers (not all members of St Mary's) who provide friendship and refreshments each week on a rota basis. The Rev'd Margot Suter attends each week and leads the group singing at the end of the session. The group is open to all. We have welcomed new mothers and toddlers as the year progressed with an average of 14 adults and 19 children by the end of the year with many coming every week.



## Music

The strong tradition of music at St. Mary's has grown this year with the agreement of a team wide music vision and the start of its implementation. Under the guidance of Aaron King the choir's repertoire has grown and we have seen many new members join for both Sunday worship and concerts. The biggest event of the year the Jubilee Concert was hugely appreciated and the music outstanding. We have enjoyed regular anthems at both 10.00am Communion and Evensong.

We now have occasional lunchtime concerts which are appreciated by congregation and visitors alike. A good year ended with a splendid Nine Lessons and Carols.



The organ project: 2022 was a time of research and meetings resulting in detailed specifications being written. In the autumn we approached three companies to tender and the DAC to progress the faculty. This led to our seeking the advice of an organ specialist who is currently preparing his report. The project has been ably led by Steve Snaith, Aaron King and Sean Groombridge and we are so grateful for their commitment. We are also grateful for the loan of the present organ from Cotswold Hybrid Organs.

## The buildings Church and Fitzwilliams Centre

We have maintained all necessary maintenance of the church and FWC. Faculties have been obtained where necessary for the quinquennial repairs and work is progressing as quickly as possible. The Friends of St. Mary's have kindly supported the replacement of the church floodlighting system and we hope to complete the church path lighting on the north west path during 2023. We can report that Fitzwilliams Centre bookings are almost at pre-covid levels and we look to increase this again this coming year as it provides much needed income.

## To conclude:

We must thank our clergy. Margot as Associate Priest, for her devotion and dedication, and Sharon, Michael and Hazel, for supporting us so willingly. 2022 was a year when we had to adapt but we all must adapt to changing circumstances. Also a time of challenge but with God's strength and guidance we learnt to journey on.

Wendy Godrich, Churchwarden



# St Thomas'

2022 has been a busy year and a year of change. For many of us we have been putting the pandemic behind us as life goes back to something like it was before 2020.

Our regular Sunday worship remains at 9.30am and 4pm with a variety of formal and informal services. These include traditional Communion services, family services, and services with Taize and Celtic prayer. Easter services included Palm Sunday service and Easter Day Holy Communion. Christmas saw a range of events and services including children choosing and wrapping surprise presents for parents, and seniors' carol singing. We had a Carols Service, Family Service with dressing up, Family Crib Service, and Christmas Day Family Communion. Holtspur School held their Nativity Service and it was wonderful to see so many children and their parents celebrating together. There have also been baptisms and funerals, each in their own way celebrating and remembering those we love and care for.



We are grateful to our clergy and St Thomas' lay worship team who have worked together to lead our services. We were joined by Rev David Izzard who has moved back to Beaconsfield having retired in 2022. He has enabled us to hold communion services while Michael has been preaching elsewhere.

The Dove Café opened on 16th February 2022 and had its official launch on 14th May. It is a vibrant, welcoming space that serves both young and old. A separate report gives more detail.

As with many churches, finances are a tricky subject. During the pandemic, income dropped dramatically and it has slowly been recovering in the period since. We have been hit hard with the increase in energy prices and continue to look for ways to counter this. Bookings for the hall, lounge and church provide regular income and we have seen new groups coming.

St Thomas' members continue to support several groups in St Thomas' Hall:



Tom's Tots, our toddler group continues to be busy. It is rare that a week goes by without a new family joining us.

Senior Citizens meet twice a month and is very popular with a wide variety of events including talks, crafts, displays and even a magician.

Our monthly film show with tea and homemade cakes has seen numbers in excess of 50.

One Can Trust continues to distribute local food parcels from St Thomas' Hall every Friday. We have seen the need for these parcels steadily increase as food and fuel prices have risen.



In St Thomas' office, The Beaconsfield Advisory Centre continues to offer advice from St Thomas' each Tuesday morning. They too have seen an increase in those seeking their services.

Among the many events that have been held in St Thomas' were:

Two Lent Lunches – a time for meeting friends and raising money for Christian Aid.

A Gift of a Piano Concert – we were given a wonderful gift of an electric mini-grand piano. To celebrate this there was a concert by local musicians.

Mother's Day afternoon tea.

Several classical concerts by local young musicians have been held. These will continue in 2023.

Jumble Sale in aid of One Can Foodbank and Wycombe Homeless Connection.

Sadly 2022 was not a return to normal for everyone. For many it was a year of immense sadness and pain with the invasion of Ukraine. At St Thomas', across our three churches and the wider Beaconsfield community, we have prayed, raised funds and supported many Ukrainians, both those who have come to the UK and those who have chosen to stay in Ukraine. Many people have become hosts and welcomed Ukrainians into their homes.



## PCC ANNUAL REPORT 2022

Café Ukraine was set up at St Thomas' and in the early period of the war each week there would be increasing numbers of women and children who had made the gruelling journey to the UK: each with their own stories to tell, each with their own loss and hurt. Café Ukraine continues to offer support, friendship and love. Our grateful thanks goes to Ulia for all her work during an immeasurably difficult time which is still ongoing.

There were various fund raising events in aid of the victims of the war in Ukraine including an Apple Pie Bake-off (with prizes donated from local businesses), an evening at a pop-up restaurant, an afternoon tea, and a Charity Tea Concert by British Association of Brass Bands. A Go Fund Page has also been set up and to date has raised over £7000.

The support for Ukraine from our community and beyond has been heartfelt. In September, I AM ALIVE was a remarkable art exhibition at St Thomas' with photographs and stories of Ukrainian women telling how they escaped the war and fled to England.

Everyone who saw it was moved by the strength and resilience of these women.



As always we remember we are God's people sent to do His will. We continue to strive to serve God and to be the heart of the Holtspur community.

Fiona Collins, Churchwarden



The Dove Café opened in February 2022 and has gone from strength to strength throughout the year.

### **Building a community**

In recent years, local research identified the need to offer somewhere in the community for people to meet with friends, to make new connections or to find support. Hence the vision for St Thomas' is to respond directly to this, to be the place where those needs are met and to be the heart of the Holtspur community. The Dove Café is designed to be that place of welcome and hospitality for all that St Thomas hope to offer.

### **The Start of a Transformation**

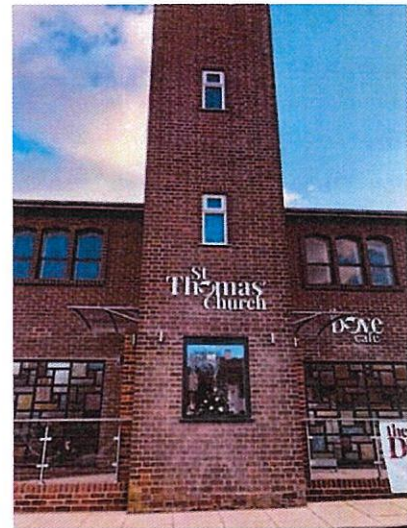
The Dove Café is already beginning to transform St Thomas' as a church in a number of ways:

- Our staff and volunteers are welcoming and actively engaging with members of the local community daily, extending the reach of God's Kingdom.
- Our building is now open and accessible to all kinds of people seven days every week. St Thomas has not become a café in which a church occasionally operates. It has become more of a church than ever before because members of the church and of the local community – many of whom we have never met before – are engaging with each other in the context of a place which embodies the Body of Christ.
- The Café and its team are breaking down barriers and blurring the boundaries between the sacred and the secular, not because there is no distinction, but to make it easier for all kinds of people to move in both directions and in both arenas.
- We are challenging ourselves to see the Body of Christ including more than just those who attend Sunday services or whose names are on the Electoral Roll.

### **Welcome to the Dove Cafe**

The Dove Café is a place where everyone is welcome. It is a vibrant café and community space serving Hotspur and Beaconsfield. We serve great coffee, tea, the best hot chocolates and delicious food and cakes. All served by Jodie, our café manager and her team of local volunteers. Where possible, our food is sourced locally from our community and from ethical suppliers.

Our café is a large open space that's accessible to all, full of natural sunlight with ample parking, free Wi-Fi, and free charging points and has proved particularly attractive to parents with young children and toddlers. On sunny days we have outdoor seating in an enclosed garden.





## Community Services

Our vision is to support the church in offering a range of new activities and support services for the community, often by working in partnership with other local bodies, including Better Connected Beaconsfield, the Beaconsfield Advisory Centre, Helping Hand, Arc PCN, Skill Up Bucks, Parkinsons UK, Dementia Friends, Safe Spaces, Read Easy, Alfriston School.

Christmas 2022 saw the café offer free meals to children in the school holidays in partnership with Bucks Council's Helping Hand programme and this proved so successful that the programme has continued in school holidays during 2023.



Alongside the Helping Hand, free food for all children project we have a “pay forward” scheme where anyone can access food or drink at any time, with no referral or judgment.

The Café has allowed a space for many vulnerable individuals, including people struggling with addiction, poverty, isolation, loneliness, and social rejection to find a safe place to access what they need.

Over the winter period the Dove Café, registered as a warm space, inviting those in energy poverty to come and keep warm and safe. During this period a selection of coats, blankets, hats and gloves were available for anyone to take with no charge.

Ensuring all the community are reached is a challenge with some parts being easier to reach than others. Through the daily range of activities the Dove Café has started to deliver something for everyone. Mondays offer a “talking café” with social prescription. We host “Café Ukraine” which allows local families to meet and share a drink as well as an out of hours ‘Bake and Banter’ group. Tuesdays gives access to the Beaconsfield Advisory Centre and NWR meet fortnightly. Wednesdays sees the “community lunch” which is provided to reach more people in need of a healthy, hot meal. On Thursdays, we have an employment advisor offering support, a fortnightly “childless not by choice group” and a monthly “Parkinson’s Café”. “WI Beaconsfield” also hold a monthly meeting. On Fridays, we tend to see a very high number of families. In the afternoon we have a monthly ‘Knit and Natter’ group as well as an independent poetry group meeting. On Saturdays, we have had a large number of Duke of Edinburgh students wishing to volunteer. We now run a weekly art and craft class to support these DofE students.

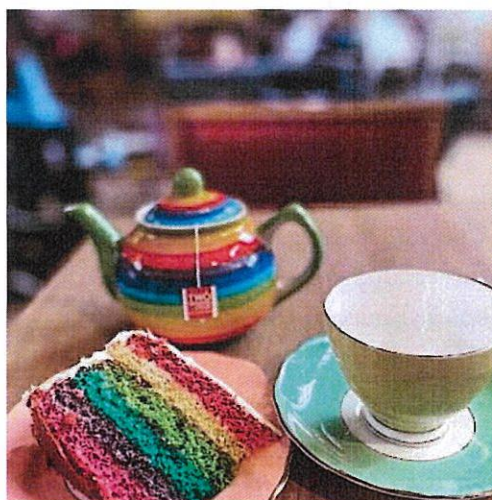




**The Operation:** Not only has the cafe proved successful in terms of community engagement and support, it has also proved to be financially viable. The value of sales during the year covered the total costs incurred by the café which was not forecast to occur until year 2. This was due to higher sales than expected and tight cost control.

**The Team:** The success of the café is a testament to the time, commitment and service and the enthusiasm and warm heartedness of our team of volunteers and our manager Jodie. Without these dedicated people there would be no café and a poorer community, and we are extremely grateful for everything they do. The team is constantly developing and growing with access to training aiming for the best to be delivered every day.

Providing opportunities for development has enabled some volunteers to access work experience. Some of the team is made up of students with a variety of needs. We have had feedback from Alfriston School that the students who volunteer from the school have grown in confidence, which is mirrored in their schoolwork.



### **The Customer Feedback**

The most frequent remark we here from our customers is how much of a community hub the church is. As you enter the building you are welcomed with a buzz of conversation, laughter, and happy children. The Dove café really is a space for everyone to share. Generations coming together has been another huge hit with many people meeting others that they may not have otherwise encountered. The interactions throughout the Café are not restricted to who you came in with – new friendships are formed every day.

Several people have come in and said that they had never been in a church before, but felt they were able to enter because of the friendliness and inviting space offered by the cafe. Several communities have said that cafe is seen as an accepting, safe and non-judgmental place where they can meet e.g. members of the LGBTQIA+ community

### **Just the Beginning**

So when people come to St Thomas' Church with The Dove Café, they are finding a warm welcome, food and drink for their body and soul, and an increasing range of activities for children, young people, parents, singles, senior citizens, neuro divergent, including conversations, stories, friendship, practical and moral support, prayers, advice, artistic opportunities, music and singing, exercise, intellectual stimulation, spiritual formation, really good coffee, tea and cakes.

We have exciting plans for 2023 to further build the community and spread the message of God.

The Dove Café Committee



# Outside Giving

The committee met twice in 2022, May and November in person to review and pray for the work of the chosen charities. No changes to the charities the team supports were made during the year.

## Mission Aviation Fellowship

Mission Aviation Fellowship (MAF) is the world's largest humanitarian air operator. For over 75 years we have been flying light aircraft over jungles, mountains, swamps and deserts. We enable more than 2,000 aid, development and mission organisations to bring medical care, emergency relief and long-term development. Our pilots and personnel deliver relief workers, doctors, pastors, school books, food, medicines - everything that can only be safely and speedily delivered by air. Our faithful supporters give and pray to make this all possible.



Dr Makor in Juba said that Grace needed treatment in the nearest specialist hospital 800 miles away and that no treatment meant sepsis and death. When Grace finally reached hospital, she needed two life-saving operations from which she is now recovering. We were honoured to fly Grace home, too. Grace's father said: 'Thank you, MAF. May God increase the days of people behind this great work, which has helped my daughter.'

In April 2022 the new MAF programme in Guinea got off the ground literally with a flight taking two missionaries to their remote location saving them 2 days of difficult road travel.

In some MAF programmes flights last several hours, in others like Timor-Leste just minutes, but are essential to save lives. Bendito, a six-year-old boy contracted dengue fever and needed the short flight to hospital in the capital Dili to save his life.

## Newham Renewal Programme

For 50+ years, they have continued to support those, in Newham, who are facing multiple challenges; whether they're a carer who needs wellbeing support, a migrant or refugee without access to public funds, an individual suffering with homelessness or experiencing poverty, a young person without direct access to learning pathways or an elderly person unable to communicate in English. With their support, they can access the services they need in order to overcome those challenges.

Using advocacy, education, temporary accommodation, positive community activities, experience and a breadth of knowledge & expertise enables them to draw on internal resources to provide individuals with the most tailored support possible.



It would be so wrong not to mention the great loss that we all felt when John Brown died in August. The pain we felt was shared by many in Newham who had grown to love and respect John in the same way as we did in Beaconsfield. He was a bundle of energy who buzzed round the corridors talking and listening to everyone. A group of our Newham friends also attended his funeral..

Another difficult year for our friends in Newham, and we have tried to support them with regular visits taking food to support their twice weekly foodbank, housewares, bedding, and men's clothes for use in their sheltered housing and ultimately helping those moving from there into their own homes. As ever, a few individuals have also supported via donations of money.



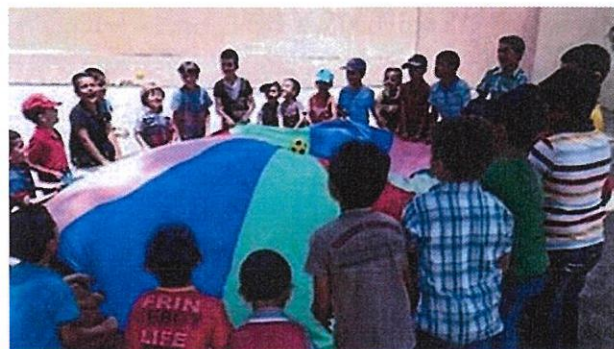
Once again St Mary's and URC harvest gifts were delivered to them and were gratefully received. Our Christmas run of toys/ scarves etc. also took place again thanks to Jennifer Brown and a group of friends who helped her sort and pack the toys.



We were grateful to the Rev Tim Dean, a Newham trustee, who visited us in February to lead a service in St Mary's..

### **Embrace the Middle East**

EMBRACE support for Syrian Refugees in Lebanon. The 12 years of war in Syria has meant refugees in Lebanon have not been able to go home. 1.5 million Refugees are hosted by a country that has had its own problems. EMBRACE works through Christian staff and churches providing Humanitarian assistance to people in great need.



These include medical, educational and social. The war in Ukraine has had a huge effect on the population, decreased wheat imports and higher fuel costs, (winters in parts of Lebanon are very cold). The cost of living and food shortages has pushed many families into a desperate situation. An outbreak of Cholera has caused more difficulties



**SYRIA - EMBRACE** are able to support programmes in Damascus 'Child friendly Spaces' and provide some medical care to vulnerable elderly people in Aleppo. Christian Partners living in Syria have responded quickly to the recent earthquake in N. Syria providing immediate support to those affected by the recent earthquake.

EMBRACE are able to support programmes in Damascus 'Child friendly Spaces' and provide some medical care to vulnerable elderly people in Aleppo. Christian Partners living in Syria have responded quickly to the recent earthquake in N. Syria providing immediate support to those affected by the recent earthquake.

Bruce Clark from EMBRACE visited St Mary's Church on 11th September, he spoke about his recent visit to N Iraq where the Kurds are returning and rebuilding their lives and communities. EMBRACE partners are providing loans to returnees and women, enabling them to start small local businesses. These are proving successful and help to pay for the children's education and any medical costs.

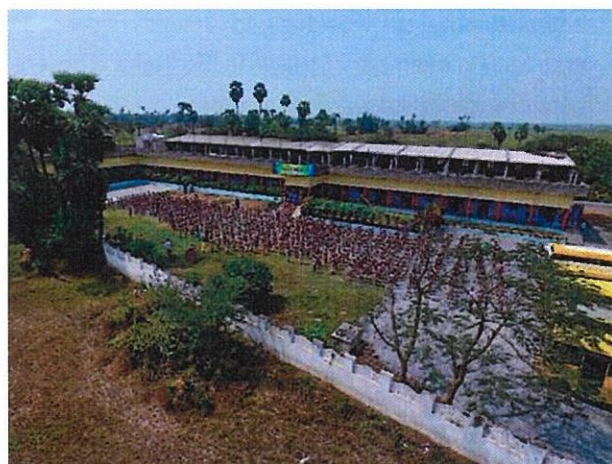
The Christmas collection was shared with EMBRACE, a generous donation of £1,015.00 was sent to the charity for the general fund/support in the Middle East. One such programme includes planting and replanting olive trees on Palestine land and supporting children with vision and hearing needs. Another is the Rock project protecting vulnerable children in Egypt.

### **Sharon International Ministries (SIM)**

The school has now just over 800 pupils with 46% girls and 54% boys. The school growth reflects the great need for as many children as possible to receive a good education. SIM still has a commitment to pay for the teachers which now number 38.

Again due to Covid there has been a backlog of pupils who are preparing for their School Leaving Certificate Exams scheduled for April 2023 resulting in a record number of pupils (62) in the 2 Senior Classes.

For the year 2022 this commitment was met despite the loss of income from fund raising. We sent £30,000 and this was in no small way thanks to the generous donations made by the Team Ministry for which Dr. Sam and the school are extremely grateful.





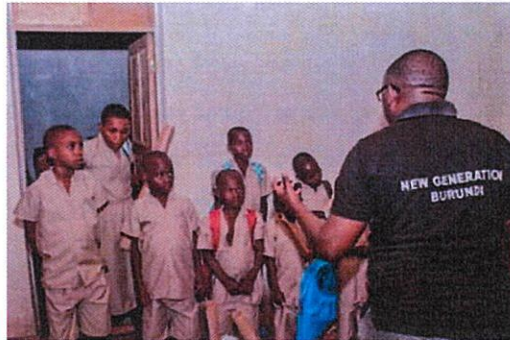
### **New Generation Burundi**

Almost 44% of the population of Burundi are under 14 years of age, 63% are under 24 years of age. New Generation has for several years developed programs that meet the needs of its target groups: young people and children. New Generation has three objectives:

To encourage young people to leave bad habits behind and renew their way of thinking.

To provide an artistic and intellectual support to young people in order to promote our culture and the glory of God.

To provide vocational training to young people with the aim of producing goods and services for a sustainable socio-economic development



New Generation has several programs aimed at meeting their objectives. In a country that is one of the poorest in the world there are numerous children who have no-one to support them and the re-integration of street-connected children remains a major issue in Burundi. In 1998 New Generation began its program working with street children. There are only a handful of initiatives like New Generation. An example of this is in Gir'iteka. There a transition centre has been developed where those who are identified as more vulnerable and need more protection and attention are welcomed. Our support for New Generation helps them to continue with their programs to reach more children that otherwise would be fending for themselves.



Derek Moores & the Outside Giving Committee



# The Community Magazine

We are always very grateful to our loyal subscribers, distributors, deliverers and advertisers who continue to support the magazine. We have received some very positive feedback from readers which is always encouraging.

After a long period of maintaining the subscription at £10.00p.a. it has now been increased to £15.00 for the current year. We are also marketing the magazine through various organisations to encourage a wider readership.

Activities returned to normal after the Covid years.

We were fortunate that Hazel Chow agreed to continue with her introductory note from the Town Chaplain, on the opening page of the magazine, while the Vicar vacancy continues at St Mary's.

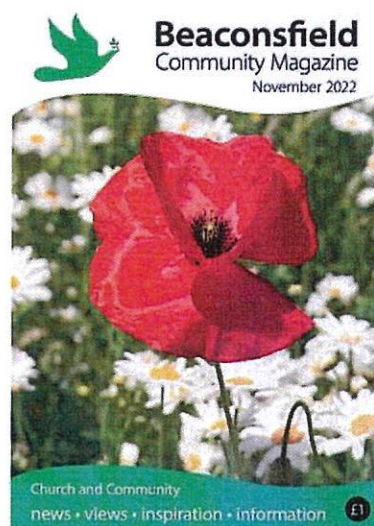
From an editorial point of view major news stories in 2022 included the Queen's Platinum Jubilee, with street parties and other events throughout the town; the official opening of the Dove café; the opening of the new Beaconsfield Medical Centre; the formation of Creative Partnerships Beaconsfield, a community art project; Lighthouse holiday club and the Country Fayre. The Queen's death in early September was marked with commemorative displays in St Mary's and a local Proclamation took place on the steps of the Town Hall. We began a series in the autumn dedicated to several Ukrainian women who fled the Russian invasion of Ukraine and found shelter in the Beaconsfield area.

It was another difficult year for advertising. Since the start of the pandemic, we have lost around 3% of our advertisers and the income from advertising in 2022 was down on the previous year. During the year we actively pursued new advertisers and we recently had some success which will help the income for the current year.

We have seen a fall in subscribers, sadly as some long-standing readers are no longer with us, but our recent campaign to attract new readers has begun to bear fruit. Our team of distributors & deliverers is stable with even a few volunteers ready to take over. We are currently reviewing our typesetting and printing costs to ensure they are competitive.

We are very grateful to our extremely efficient treasurer, Nicki Edwards and the subscriptions manager, Sally Masters

Margaret Mardall, Editor



### **The Beaconsfield Team Ministry**

The Team Ministry comprises the Parish Churches of St Mary and All Saints, St Michael and All Angels and St Thomas, Holtspur within the Benefice of Beaconsfield. The Parochial Church Council has assigned to the District Church Councils (DCCs) all the functions of the Parochial Church Council of the parish except for the holding of real estate, the provision of youth activities and Team activities including the Community Magazine, the Alpha course and Marriage Preparation.

The total number on the Electoral Roll for 2022 was 528 (2021 559)

The address for PCC correspondence is:

The Fitzwilliams Centre

Windsor End,

Beaconsfield,

Buckinghamshire HP9 2JW

Telephone number: 01494 676690

Email: [info@stmarysbeaconsfield.org.uk](mailto:info@stmarysbeaconsfield.org.uk)

Auditors	Bankers	Legal Advisers
Cansdales Audit LLP	Lloyds TSB plc	Winckworth Sherwood
St Mary's Court	3 Burkes Parade	16 Beaumont Street
The Broadway	Beaconsfield	Oxford
Old Amersham	Buckinghamshire	OX1 2LZ
Bucks HP7 0UT	HP9 1NR	



## PCC Members (Trustees) 2022

The Revd Sharon Roberts Team Vicar of St Michael's

The Revd Michael Johnson Team Vicar of St Thomas's

The Revd Margot Suter Associate Priest, St Mary's

Mrs Hazel Chow Licensed Lay Minister, Town Chaplain

Mrs Wendy Godrich, Churchwarden, St Mary's

Mr Bill Edwards Churchwarden St Mary's (until May 2022)  
Assistant Churchwarden & St Mary's PCC rep (from May 2022)

Mr David Bulteel, Churchwarden, St Mary's (until May 2022)

Mrs Harriet Baldwin, St Mary's PCC rep (from May 2022) PCC Secretary

Mrs Fiona Collins Churchwarden of St Thomas'

Mr Trevor Sharkey Churchwarden of St Thomas' (until May 2022)  
St Thomas' Deanery Synod representative

Mr Andrew Farncombe St Mary's Deanery Synod representative

Professor Derek Portwood, St Mary's Deanery Synod representative

Mr Eddie Weiss St. Mary's Deanery Synod representative

Dr Daphne Scott, Churchwarden, St Michael's (from May 2022)

Mr John Gibbs, Churchwarden St Michael's (until May 2022)

Miss Frances Hall St Michael's PCC & Deanery Synod representative  
(until January 2022)

Mrs Mary Bischoff St Michael's PCC representative

Mrs Annie Bennett, St Michael's PCC representative (from May 2022)

Mrs Alison Hart St Thomas' PCC representative (until May 2022)

Mrs Catherine Davidson, St Thomas' PCC representative

Mr Richard Davidson, St Thomas' PCC representative (from May 2022)



## **Structure, governance and management**

The Parochial Church Council is a corporate body established by the Church of England. The PCC operates under the Parochial Church Council Powers Measure. The PCC is registered with the Charity Commission under registered no: 1132259. The PCC confirms that Members have referred to the Charity Commission's guidance on public benefit, in particular the specific guidance on charities for the advancement of religion, when reviewing the charity's aims and objectives and in planning future activities. The PCC carries out these objectives by activities conducted under its direct control and through those activities assigned by it to the individual churches within the team ministry. Such activities are described in more detail in the report.

The appointment of PCC members is governed by and set out in the Church Representation Rules. The PCC has a Standing Committee whose members are the Rector (Chair), the Team Vicars and Churchwardens from each church (Co-Vice Chairs), the Hon. Secretary and the Hon. Treasurer.

The PCC holds 5 meetings a year with a Standing Committee meeting prior to each PCC meeting. There is a standing item of business at the first PCC meeting following the APCM in which existing trustees are reminded of, and new trustees are instructed of, their responsibilities as trustees. All three DCCs provide representatives on the PCC and report regularly to the PCC on major topics and issues in the individual churches. The PCC prepares consolidated financial statements incorporating the accounts of the PCC and the three churches. A local firm of Accountants is appointed as Auditors..

The PCC held scheduled meetings in February, April, June, September, and November 2022. An additional PCC meeting was held in August, focussing specifically on finances and the proposal to appoint a Team Treasurer.

The PCC held 2 additional meetings as part of the Vacancy process following the departure of the Team Rector in 2021. In January 2022 the PCC Section 12 meeting was held in preparation for the recruitment of a new Team Rector.

In October 2022 a meeting was convened for the PCC & DCC members to discuss the proposal to move forward with a Team Vicar for St Mary's, with the Team Rector role being agreed to be appointed internally.

The PCC Standing Committee met in January, May, September and November in preparations for PCC meetings.



## **PCC discussions**

Regular items for the Standing Committee and for the PCC included:

- DCC reports from the churches: including worship & services, buildings and working with the wider community;
- Outside Giving reports of working with mission partners;
- Collaboration and team working within the Team and with the wider community;
- Appointment of governors to St Mary's School (at meetings and by email circulation);
- Buildings & property matters: the Church house at 26 Candelmas Mead which has been let commercially during 2022, with new tenants in February 2022.

Financial matters

- Regular quarterly reporting of income and expenditure against budget from the 3 churches and from the Team account, including how to address the ongoing deficit in finances, in particular for St Mary's
- Streamlining and simplifying financial processes across the Team churches and the recruitment of a Team Treasurer to take a strategic overview of finances across the Team;
- The Team budget for 2022 including the allocation of the Parish share and expenses amounts for the 3 churches

Special agenda items for the PCC included:

- The oversight of the vacancy process, communication with the congregations and the preparation of Parish profiles and job descriptions
- The proposal and eventual decision to disengage the Team Rector role from the role of St Mary's Team Vicar, including wider discussions with the DCCs and the congregations, and the progress towards recruitment of a Team Vicar for St Mary's
- The Dove café at St Thomas', including regular updates on progress of design, development and funding throughout the year and towards the end of the year the recruitment and appointment of a new café manager, who started work in September 2022.
- The Vision for Music, and the start of the music project at St Mary's, including communications, community outreach and working with local schools
- A report on the Lighthouse Holiday camp held in July 2022
- The Annual Report from the Community magazine for 2022, this report was received in February 2023.
- GDPR and Data Protection matters for the Team, with the PCC taking oversight in this area.



## **Risk**

The major risks to which the PCC is exposed are identified in risk control registers maintained by the three Team churches and are regularly reviewed and systems or procedures have been established to manage those risks. Risks such as health & safety, lone working and safeguarding are mitigated by regular checks/reviews and ensuring that appropriate controls and insurances are in place. St Mary's manages its investments as part of a balanced portfolio, so that it is protected in the event of those investments losing value.

## **Related charities**

The PCC has the following related charities:

The Beaconsfield Church Educational Trust (BCET) is registered charity no.1048607. The Trustees of the BCET are the Rector, Team Vicars of St Thomas' and St Michael's and Churchwardens of the 3 Team churches in the Parish of Beaconsfield. The PCC received grants to support the work of the Beaconsfield Team Ministry during the year.

St Mary and All Saints Beaconsfield Development Fund (The Friends of St. Mary's) is a registered charity No.1094574 whose trustees are appointed by the District Church Council of St. Mary & All Saints. The object of the charity is to broaden the support of St. Mary's beyond the immediate congregation and to use funds raised for the fabric of the Church and Churchyard as well as to assist the wider mission of the Church.

## **Property**

Within the Parish there are 2 church houses. The PCC owns a house at 26 Candlemas Mead which has been let out commercially from August 2020.

The BCET owns a house at 27 Crossways, which has been rented out commercially from August 2020.

Each of the Team churches is responsible for the management and maintenance of its church centre or hall: the Fitzwilliams Centre, St Michael's hall and Church & Community Resource Centre and St Thomas' Hall.

Reports on the church halls are included in the DCC reports to the PCC.

### **PCC Reserves Policy**

It is the policy of the PCC to have unrestricted cash reserves in each DCC (after setting aside funds earmarked for specific projects, invested in fixed assets or restricted for particular purposes) of at least six months normal recurring unrestricted expenditure in line with prudent practice.

At 31 December 2022 the unrestricted cash reserves totalled £414,490 and represented 7.8 months of normal recurring expenditure (2021: £437,575 9.8 months). This is a consolidation of 3 individual churches and the Team Ministry each with varying levels of cash cover and future spending requirements. Depreciation, investment income and building costs associated with the Dove Café, a designated project, have been excluded.

### **PCC Financial Review**

The consolidated financial statements include the financial statements of the three DCCs and the Team Ministry which records the expenditure by the PCC on those activities for which it assumes responsibility and to which the three churches contribute funds.

Income in 2022 totalled £671,509 (2021: £678,182) and includes income from designated and restricted funds (Dove Café £97,407, Holtspur Senior Citizens £2,460, Garden of Remembrance £2,527). Excluding restricted and designated funds, total income for 2022 was £569,115 (2021: £482,189). Legacies of £25,619 (2021: £10,000) were recognised in the year. Regular Giving, including the associated tax recoverable, continues to account for around 53% of all unrestricted income and remains at approximately £300,000 a year.

Expenditure in 2022 totalled £778,517 (2021: £768,767) and includes costs associated with designated and restricted funds (Dove Café £149,775, Holtspur Senior Citizens £333, Garden of Remembrance £2,472, depreciation on restricted / designated assets £32,048). Unrestricted total expenditure for 2022 was £593,886 (2021: £569,566). This includes depreciation (a non-cash expense) on unrestricted funds of £27,350.

Parish share and staff costs together account for 65% of all unrestricted expenditure. Unrestricted expenses for the PCC stood at £67 per hour in 2022 (£65 per hour in 2021).



In 2022 there was an unrealised loss on Investments of £11,861 (2021: gain £12,723) and Dividends of £2,659 (2021: £2,572) were received. The total deficit for the year was £118,870 (2021: deficit £77,862) with unrestricted income and expenditure showing a deficit of £36,632 (2021: deficit £74,654). Excluding depreciation, the deficit in the year was £9,282.

The total funds on the Balance Sheet at 31 December 2022 was £1,276,513 (2021: £1,395,383) of which £5,575 was Restricted and £637,853 was Designated. Unrestricted funds stood at £633,085.

The unrestricted cash at bank at 31 December 2022 was £410,978 (2021: £383,822).

### **Statement of the responsibilities of the members of the PCC**

The members of the Parochial Church Council are required to prepare financial statements for each financial year which give a true and fair view of the PCC's financial activities during the year and of its financial position at the end of the year. In preparing financial statements giving a true and fair view, the members should follow best practice and:

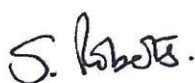
- select suitable accounting policies and then apply them consistently;
- make judgements and estimates that are reasonable and prudent;
- state whether applicable accounting standards and statements of recommended practice have been followed, subject to any departures disclosed and explained in the financial statements;
- prepare the financial statements on the going concern basis unless it is inappropriate to presume that the PCC will continue in operation.

Members of the PCC are responsible for keeping accounting records which both disclose with reasonable accuracy and enable them to ascertain the financial position of the PCC and which enable them to ensure that the financial statements comply with the Charities Act 2011, the Statement of Recommended Practice "Accounting and Reporting by Charities" issued in 2019 and the Church Accounting Regulations 2006. They are also responsible for safeguarding the assets of the PCC and hence for taking reasonable steps for the prevention and detection of fraud and other irregularities.

### **Disclosure of information to auditor**

Each of the Trustees has confirmed that there is no information of which they are aware which is relevant to the audit but of which the auditor is unaware. They have further confirmed that they have taken appropriate action to identify such relevant information and to establish that the auditor is aware of such information.

Approved by the Parochial Church Council on 19 April and signed on its behalf by:



---

CHAIR



## **Independent Auditors Report to the Parochial Church Council of Beaconsfield Team Ministry**

### **Opinion**

We have audited the financial statements of Beaconsfield Team Ministry for the year ended 31 December 2022 which comprise of a Statement of Financial Activities, Balance Sheet, Cashflow and notes numbered 1 to 11 to the financial statements including a summary of significant accounting policies. The financial reporting framework that has been applied in their preparation is applicable law and United Kingdom Accounting Standards, including Financial Reporting Standard 102 The Financial Reporting Standard applicable in the UK and Republic of Ireland (United Kingdom Generally Accepted Accounting Practice).

In our opinion the financial statements:

- give a true and fair view of the state of the PCC's affairs as at the 31 December 2022, and of its incoming resources, for the year ended;
- have been properly prepared in accordance with United Kingdom Generally Accepted Accounting Practice; and,
- have been prepared in accordance with the requirements of the Charities Act 2011.

### **Basis for opinion**

We conducted our audit in accordance with the International Standards of Auditing (UK) (ISAs (UK)) and applicable law. Our responsibilities under those standards are further described in the Auditor's responsibilities for the audit of the financial statements section of our report. We are independent of the PCC in accordance with the ethical requirements that are relevant to our audit of the financial statements in the UK including the FRC's Ethical Standard, and we have fulfilled our other ethical responsibility in accordance with these requirements and believe that the audit evidence we have obtained is sufficient and appropriate to provide a basis for our opinion.

### **Conclusions relating to going concern**

We have nothing to report in respect of the following matter in relation to which the ISAs (UK) require us to report to you where:

- the Members of the PCC's use of the going concern basis of accounting in the preparation of the financial statements is not appropriate; or
- the Members of the PCC have not disclosed in the financial statements any identified material uncertainties that may cast significant doubt about the PCC's ability to continue to adopt the going concern basis of accounting for a period of at least twelve months from the date when the financial statements are authorised for issue.

### **Other information**

The Members of the PCC are responsible for the other information. The other information comprises the information included in the member's annual report, other than the financial statements and our auditor's report thereon. Our opinion on the financial statements does not cover the other information and, except to the extent otherwise explicitly stated in our report, we do not express any form of assurance conclusion thereon.

In connection with our audit of the financial statements, our responsibility is to read the other information and, in doing so, consider whether the other information is materially inconsistent with the financial statements or our knowledge obtained in the audit or otherwise appears to be materially misstated. If we identify such material inconsistencies or apparent material misstatements, we are required to determine whether there is a material misstatement in the financial statements or a material misstatement of the other information. If, based on the work we have performed, we conclude that there is a material misstatement of this other information, we are required to report that fact.

We have nothing to report in this regard.

#### **Matters on which we are required to report by exception**

We have nothing to report in respect of the following matters in relation to which the Charities (Accounts and Reports) Regulations 2008 require us to report to you if, in our opinion:

- the information given in the financial statements is inconsistent in any material respect with the PCC annual report; or
- sufficient accounting records have not been kept; or
- the financial statements are not in agreement with the accounting records; or
- we have not received all the information and explanations we require for our audit.

#### **Responsibilities of the Members of the PCC**

As explained more fully in the Statement of Responsibilities of the Members of the PCC, the members are responsible for the preparation of financial statements which give a true and fair view, and for such internal control as the members determine is necessary to enable the preparation of financial statements that are free from material misstatement, whether due to fraud or error.

In preparing the financial statements, the Members of the PCC are responsible for assessing the PCC's ability to continue as a going concern, disclosing, as applicable, matters related to going concern and using the going concern basis of accounting unless the Members of the PCC either intend to liquidate the PCC or to cease operations or have no realistic alternative but to do so.

#### **Auditor's responsibilities for the audit of the financial statements**

We have been appointed as auditor under section 144 of the Charities Act 2011 and report in accordance with regulations made under section 154 of that Act.

Our objectives are to obtain reasonable assurance about whether the financial statements as a whole are free from material misstatement, whether due to fraud or error, and to issue an auditor's report that includes our opinion. Reasonable assurance is a high level of assurance, but is not a guarantee that an audit conducted in accordance with ISAs (UK) will always detect a material misstatement when it exists. Misstatements can arise from fraud or error and are considered material if, individually or in the aggregate, they could reasonably be expected to influence the economic decisions of users taken on the basis of these financial statements.

As part of an audit in accordance with ISAs (UK), we exercise professional judgement and maintain professional scepticism throughout the audit. We also:

- Identify and assess the risks of material misstatement of the financial statements, whether due to fraud or error, design and perform audit procedures responsive to those risks, and obtain audit evidence that is



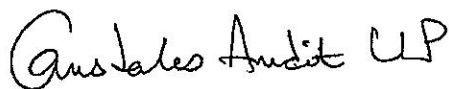
sufficient and appropriate to provide a basis for our opinion. The risk of not detecting a material misstatement resulting from fraud is higher than for one resulting from error, as fraud may involve collusion, forgery, intentional omissions, misrepresentations, or the override of internal control.

- Obtain an understanding of internal control relevant to the audit in order to design audit procedures that are appropriate in the circumstances, but not for the purpose of expressing an opinion on the effectiveness of the PCC's internal control.
- Evaluate the appropriateness of accounting policies used and the reasonableness of accounting estimates and related disclosures made by the Members of the PCC.
- Conclude on the appropriateness of the Members of the PCC use of the going concern basis of accounting and, based on the audit evidence obtained, whether a material uncertainty exists related to events or conditions that may cast significant doubt on the PCC's ability to continue as a going concern. If we conclude that a material uncertainty exists, we are required to draw attention in our auditor's report to the related disclosures in the financial statements or, if such disclosures are inadequate, to modify our opinion. Our conclusions are based on the audit evidence obtained up to the date of our auditor's report. However, future events or conditions may cause the PCC to cease to continue as a going concern.
- Evaluate the overall presentation, structure and content of the financial statements, including the disclosures, and whether the financial statements represent the underlying transactions and events in a manner that achieves fair presentation.

We communicate with those charged with governance regarding, among other matters, the planned scope and timing of the audit and significant audit findings, including any significant deficiencies in internal control that we identify during our audit.

#### **Use of our report**

This report is made solely to the Members of the PCC, as a body, in accordance with Part 4 of the Charities (Accounts and Reports) Regulations 2008. Our audit work has been undertaken so that we might state to the Members of the PCC those matters we are required to state to them in an auditor's report and for no other purpose. To the fullest extent permitted by law, we do not accept or assume responsibility to anyone other than the PCC and the members of the PCC as a body, for our audit work, for this report, or for the opinions we have formed.



Cansdales Audit LLP

Chartered Accountants and Statutory Auditors

Cansdales Audit LLP is eligible to act as an auditor in terms of section 1212 of the Companies Act 2006.

Date: 19 May 2023

St Mary's Court  
The Broadway  
Old Amersham  
Bucks  
HP7 0UT

Beaconsfield Team Ministry

Consolidated End of Year Financial Statements

Year ending 31st December 2022





**BEACONSFIELD PCC**

Registered charity no : 1132259

**CONSOLIDATED STATEMENT OF FINANCIAL ACTIVITIES**

For the year ended 31 December 2022

	Notes	Unrestricted funds	Designated funds	Restricted funds	Total 2022	Unrestricted funds	Designated funds	Restricted funds	Total 2021
		£	£	£	£	£	£	£	£
<b>INCOME</b>									
Voluntary income	2.1	374,756	26,819	2,375	403,950	346,231	11,740	-	357,971
Activities for generating funds	2.2	58,776	73,047	152	131,975	60,025	184,253	-	244,278
Investment income	2.3	4,815	-	-	4,815	2,658	-	-	2,658
Income from charitable activities	2.4	130,769	-	-	130,769	73,275	-	-	73,275
<b>Total Income</b>		<b>569,115</b>	<b>99,866</b>	<b>2,527</b>	<b>671,509</b>	<b>482,189</b>	<b>195,993</b>	<b>-</b>	<b>678,182</b>
<b>EXPENDITURE</b>									
Fundraising	3.1	37,194	40,288	-	77,481	38,221	10,332	-	48,553
Charitable activities	3.2	547,438	141,868	2,474	691,780	524,707	188,869	-	713,576
Management costs	3.3	9,255	-	-	9,255	6,638	-	-	6,638
<b>Total Expenditure</b>		<b>593,886</b>	<b>182,156</b>	<b>2,474</b>	<b>778,517</b>	<b>569,566</b>	<b>199,201</b>	<b>-</b>	<b>768,767</b>
<b>Net Income / (Expenditure) before transfers</b>		<b>(24,771)</b>	<b>(82,290)</b>	<b>53</b>	<b>(107,008)</b>	<b>(87,377)</b>	<b>(3,208)</b>	<b>-</b>	<b>(90,585)</b>
Transfers between funds		-	-	-	-	-	-	-	-
Other recognised gains / losses		-	-	-	-	-	-	-	-
Gains/losses on investments	6	(11,861)	-	-	(11,861)	12,723	-	-	12,723
<b>Net movement in funds</b>		<b>(36,632)</b>	<b>(82,290)</b>	<b>53</b>	<b>(118,870)</b>	<b>(74,654)</b>	<b>(3,208)</b>	<b>-</b>	<b>(77,862)</b>
<b>Total funds brought forward</b>		<b>669,717</b>	<b>720,143</b>	<b>5,522</b>	<b>1,395,383</b>	<b>744,371</b>	<b>723,351</b>	<b>5,522</b>	<b>1,473,243</b>
<b>Total funds carried forward</b>		<b>633,085</b>	<b>637,853</b>	<b>5,575</b>	<b>1,276,513</b>	<b>669,717</b>	<b>720,143</b>	<b>5,522</b>	<b>1,395,383</b>

All the PCC's operations are classed as continuing.

The PCC has no recognised gains or losses other than the results for the year.

Notes 1 to 11 form part of the financial statements.

**BEACONSFIELD PCC**

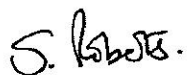
Registered charity no : 1132259

**CONSOLIDATED BALANCE SHEET AT 31 DECEMBER 2022**

	Notes	Unrestricted funds £	Designated funds £	Restricted funds £	2022 £	2021 £
<b>FIXED ASSETS</b>						
Tangible assets	5	211,761	634,343	-	846,104	905,501
Investments	6	89,348	-	-	89,348	101,209
		301,109	634,343	-	935,452	1,006,710
<b>CURRENT ASSETS</b>						
Debtors	7	24,971	-	-	24,971	18,901
Cash in hand and at bank		285,729	3,512	5,575	294,815	322,165
Short term deposits		125,250	-	-	125,250	120,932
<b>TOTAL CURRENT ASSETS</b>		435,949	3,512	5,575	445,035	461,997
<b>CREDITORS</b>						
Amounts falling due within one year	8	(103,971)	-	-	(103,971)	(73,324)
<b>NET CURRENT ASSETS</b>		331,978	3,512	5,575	341,064	388,673
<b>TOTAL ASSETS less CURRENT LIABILITIES</b>		633,085	637,853	5,575	1,276,513	1,395,383
<b>CREDITORS :</b>						
Amounts falling due after more than one year		-	-	-	-	-
<b>NET ASSETS</b>		633,085	637,853	5,575	1,276,513	1,395,383
<b>FUNDS</b>						
Unrestricted funds	9					
Unrestricted funds		633,085	-	-	633,085	669,718
Designated funds	9.1	-	637,853	-	637,853	720,143
		633,085	637,853	-	1,270,938	1,389,861
Restricted funds	9.2	-	-	5,575	5,575	5,522
		633,085	637,853	5,575	1,276,513	1,395,383

Notes 1 to 11 form part of the financial statements.

**APPROVED BY THE MEMBERS OF THE PAROCHIAL CHURCH COUNCIL ON 19th APRIL 2023**  
**AND SIGNED ON THEIR BEHALF BY :**



Rev. Sharon Roberts (Chairman)



Mrs Wendy Godrich (Senior Churchwarden)



**BEACONSFIELD PCC**

Registered charity no : 1132259

**CONSOLIDATED STATEMENT OF CASHFLOWS AT 31 DECEMBER 2022**

	<b>Note</b>	<b>2022</b>	<b>2021</b>
		<b>£</b>	<b>£</b>
<b>Net movement in funds</b>		<b>(107,008)</b>	<b>(90,585)</b>
Adjustments for:			
Depreciation	<b>5</b>	59,398	59,398
Investment income	<b>2.3</b>	(4,815)	(2,658)
Decrease/(increase) in trade and other receivables		(6,070)	2,556
Increase/(decrease) in trade and other payables		30,647	(28,636)
<b>Net cash from operating activities</b>		<b>(27,848)</b>	<b>(59,925)</b>
<b>Investing activities</b>			
(Purchase)/Disposal of fixed assets	<b>5</b>	-	-
Other recognised gains/losses		-	-
Investment income	<b>2.3</b>	4,815	2,658
<b>Cash flow from investing activities</b>		<b>4,815</b>	<b>2,658</b>
<b>Net change in cash and cash equivalents</b>		<b>(23,033)</b>	<b>(57,267)</b>
<b>Cash and cash equivalents at the start of the year</b>		<b>443,097</b>	<b>500,364</b>
<b>Cash and cash equivalents at the end of the year</b>		<b>420,065</b>	<b>443,097</b>
<b>Cash and cash equivalents consists of:</b>		<b>2022</b>	<b>2021</b>
Cash at bank and in hand		294,815	322,165
Short Term Deposits		125,250	120,932
<b>Cash and cash equivalents at 31 December</b>		<b>420,065</b>	<b>443,097</b>

## **BEACONSFIELD PCC**

Registered charity no : 1132259

### **NOTES TO THE CONSOLIDATED FINANCIAL STATEMENTS**

For the year ended 31 December 2022

#### **I. ACCOUNTING POLICIES**

These accounting policies apply to the financial statements of the Beaconsfield Team Ministry comprising the Team Parochial Church Council and the District Church Councils of St Mary and All Saints, St. Thomas and St Michael and All Angels. The consolidated figures include the activities of the PCC and the DCCs. The financial statements of all three DCCs are subject to separate independent examination prior to inclusion in the consolidated figures. Where the PCC is referred to in these policies, it is to be understood that this includes a DCC and any sub account as appropriate.

The financial statements have been prepared under the historical cost convention with items recognised at cost of transaction value except for investment assets, which are shown at fair value.

The financial statements have been prepared to give a 'true and fair' view and have departed from the Charities (Accounts and Reports) Regulations 2008 only to the extent required to provide a 'true and fair view'. This departure has involved following the Accounting and Reporting by Charities: Statement of Recommended Practice applicable to charities preparing their accounts in accordance with the Financial Reporting Standard applicable in the UK and Republic of Ireland (FRS 102) issued on October 2019 rather than the Accounting and Reporting by Charities: Statement of Recommended Practice effective from 1 April 2005 which has been withdrawn. The financial statements are prepared in accordance with the Charities Act 2011 and UK Generally Accepted Practice.

The trust constitutes a public benefit entity as defined by FRS 102. The trustees consider that due to sufficient reserves being held there are no material uncertainties about the Trust's ability to continue as a going concern.

#### **Funds**

General funds represent the funds of the PCC that are not subject to any restrictions regarding their use and are available for application on the general purposes of the PCC. Funds designated for a particular purpose by the PCC are also unrestricted.

The financial statements include all transactions, assets and liabilities for which the PCC is responsible in law. They do not include the accounts of church groups that owe their main affiliation to another body nor those that are informal gatherings of church members.

Restricted funds may only be used for the purposes for which they have been given.

#### **Income**

Voluntary income and capital sources :

Collections are recognised when received by, or on behalf of, the PCC.

Planned giving receivable under gift aid is recognised only when received.

Income Tax recoverable on gift aid donations is recognised when the income is recognised.

Legacies are accounted for as soon as the Church is notified of its legal entitlement, the amount due is quantifiable and its ultimate receipt by the Church is more likely than not.

Funds raised by the events held during the year are accounted for gross.

Sales of books and magazines are accounted for gross.

#### **Other ordinary income**

Rental income from the letting of Church premises is recognised when the rental is due.

#### **Income from investments**

Dividends and interest are accounted for when received. Tax recoverable on such income is recognised in the same accounting year.

#### **Gains and losses on investments**

Realised gains or losses are recognised when investments are sold.

Unrealised gains or losses are accounted for annually on revaluation of investments at 31 December.

#### **Expenditure**

Expenditure is accounted for on an accruals basis, inclusive of the VAT which cannot be recovered. Certain expenditure is directly attributable to specific activities and has been allocated to those cost categories. Where these costs are attributable to more than one activity, they have been apportioned to the individual activities on the basis of the time spent by staff on matters related to those activities. Central support costs have been allocated on the basis of resources used and have been apportioned to centres of fundraising, publicity, individual projects within charitable activities and governance costs. Parish Share is paid direct to the Diocese from the PCC. Governance costs comprise all costs relating to the public accountability of the PCC and its compliance with regulatory and good practice. These costs consist of those relating to the statutory audit and are included in management costs.



**BEACONSFIELD PCC**

Registered charity no : 1132259

**NOTES TO THE CONSOLIDATED FINANCIAL STATEMENTS (continued)**

For the year ended 31 December 2022

**I ACCOUNTING POLICIES (continued)**

**Grants**

Grants and donations are recognised when paid over, or when awarded, if that award creates a binding obligation on the PCC.

**Activities directly relating to the work of the Church**

Any parish share unpaid at 31 December is provided for in these financial statements as an operational (although not legal) liability and is shown as a creditor in the balance sheet.

**Pension**

Pension costs consist of payments made by the PCC to employees' personal pension schemes. These costs are charged against the results of the year in which they are made.

**Fixed Assets**

**Consecrated property and moveable Church furnishings**

Consecrated land and beneficed property is excluded from the financial statements by s.10(2) of the Charities Act 2011.

Moveable church furnishings held by the clergy and churchwardens on special trust for the PCC, and which require a special faculty for disposal, are accounted for as inalienable property unless consecrated. They are listed in the churches' inventories which can be inspected at any reasonable time. For inalienable property acquired prior to 2001 there is insufficient cost information available and therefore such assets are not valued in the financial statements. Items acquired since 1 January 2001 have been capitalised and depreciated in the financial statements over their currently anticipated useful economic life on a straight line basis.

All expenditure incurred during the year on consecrated or beneficed buildings and moveable Church furnishings, whether maintenance or improvement, is written off as expenditure in the SOFA and separately disclosed.

**Other property**

Other property is included in the financial statements at cost.

Depreciation on the Fitzwilliams Centre is provided at 2% p.a. of its cost. Depreciation on 26 Candlemas Mead is provided at 2% p.a. of the cost of the building which is taken to be two thirds of the cost of the property.

Depreciation on St Michael's Church Community & Resource Centre is provided at 2% of its cost.

**Other fixtures, fittings and office equipment**

Equipment used within Church premises is depreciated on a straight line basis over 5 years. Individual items with a purchase price of £2,000 or less are written off when the asset is acquired. Computer equipment and software is written off when acquired.

**Investments**

Investments are valued annually at fair (market) value as 31 December.

**Current assets**

Amounts owing to the PCC at 31 December in respect of fees, rents or other income are shown as debtors less provision for any amounts that may prove uncollectable. Short term deposits include cash held on deposit either with the CBF Church of England Funds or at the Bank.

**BEACONSFIELD PCC**

Registered charity no : 1132259

**NOTES TO THE CONSOLIDATED FINANCIAL STATEMENTS (Continued)**

For the year ended 31 December 2022

**2. ANALYSIS OF INCOME**

		Unrestricted Funds £	Designated Funds £	Restricted Funds £	2022 Total £	2021 Total £
<b>2.1 Voluntary income</b>						
<b>Planned giving</b>						
Tax efficient giving		198,377	7,457	900	206,734	206,730
Tax recoverable		46,755	-	-	46,755	59,434
Other planned giving		57,443	18,194	475	76,112	44,930
Collections at services		751	-	-	751	664
Sundry donations		-	-	-	-	-
		303,326	25,651	1,375	330,352	311,758
<b>Other voluntary income</b>						
BCET	11.1	33,000	-	-	33,000	33,500
HMRC furlough grant		-	-	-	-	-
Donations, appeals etc		12,811	1,168	1,000	14,979	2,713
Legacies		25,619	-	-	25,619	10,000
		71,430	1,168	1,000	73,598	46,213
		374,756	26,819	2,375	403,950	357,971
<b>2.2 Activities for generating funds</b>						
Church house/land lettings		27,017	-	-	27,017	33,993
Church hall lettings		-	-	-	-	-
Beaconsfield Community Mag		17,495	-	-	17,495	16,188
Social activities		2,603	2,460	152	5,215	2,612
Dove Café		-	70,587	-	70,587	184,253
Other fundraising		11,661	-	-	11,661	7,232
		58,776	73,047	152	131,975	244,278
<b>2.3 Investment income</b>						
Interest		2,156	-	-	2,156	86
Dividends		2,659	-	-	2,659	2,572
Realised gain/(loss) on investment		-	-	-	-	-
		4,815	-	-	4,815	2,658
<b>2.4 Income from charitable activities</b>						
Fees		24,856	-	-	24,856	25,636
Church hall lettings		105,913	-	-	105,913	47,639
Bookstall / Children		-	-	-	-	-
		130,769	-	-	130,769	73,275
<b>Total Income</b>		<b>569,115</b>	<b>99,866</b>	<b>2,527</b>	<b>671,509</b>	<b>678,182</b>



**BEACONSFIELD PCC**

Registered charity no : 1132259

**NOTES TO THE CONSOLIDATED FINANCIAL STATEMENTS (Continued)**

For the year ended 31 December 2022

**3. ANALYSIS OF EXPENDITURE**

	Unrestricted Funds £	Designated Funds £	Restricted Funds £	2022 Total £	2021 Total £
<b>3.1 Fundraising</b>					
Church hall and other property running costs	1,105	2,566	-	3,671	3,490
Community magazine	21,622	-	-	21,622	21,365
Charitable activities/Fees-Weddings	10,033	-	-	10,033	15,319
Social activities	4,434	37,722	-	42,155	8,379
	<u>37,194</u>	<u>40,288</u>	<u>-</u>	<u>77,481</u>	<u>48,553</u>
<b>3.2 Charitable activities</b>					
<b>Parish Share</b>	233,815	-	-	233,815	235,955
<b>Clergy</b>					
Expenses	520	-	-	520	7,158
Ordinand/Curate/Family Worker	4,207	-	-	4,207	11,594
	<u>4,727</u>	<u>-</u>	<u>-</u>	<u>4,727</u>	<u>18,752</u>
<b>Church running costs</b>					
Salaries & honoraria	59,402	37,346	-	96,748	49,643
Church running expenses	36,952	1,410	2,474	40,837	35,008
Church maintenance	45,504	-	-	45,504	11,126
Church improvements & major repairs	-	-	-	-	-
Depreciation furniture & fittings	24,350	14,557	-	38,907	38,907
Depreciation freehold property	-	-	-	-	-
Training	100	-	-	100	-
Team expenses	-	-	-	-	963
	<u>166,308</u>	<u>53,313</u>	<u>2,474</u>	<u>222,096</u>	<u>135,646</u>
<b>Church halls</b>					
Running expenses/maintenance	44,634	148	-	44,782	49,922
Dove Café building costs	-	73,483	-	73,483	158,064
Depreciation	3,001	14,924	-	17,925	17,925
	<u>47,635</u>	<u>88,555</u>	<u>-</u>	<u>136,190</u>	<u>225,911</u>
<b>Youth work</b>					
Cost of youth activities	-	-	-	-	-
	<u>-</u>	<u>-</u>	<u>-</u>	<u>-</u>	<u>-</u>
<b>Church management &amp; administration</b>					
Parish Office	50,118	-	-	50,118	42,602
Printing, stationery & telephone	5,694	-	-	5,694	7,740
Bank charges	1,074	-	-	1,074	960
Other team costs	5,447	-	-	5,447	6,478
	<u>62,333</u>	<u>-</u>	<u>-</u>	<u>62,333</u>	<u>57,779</u>
<b>3.2 Expenditure on charitable activities</b>	<u>514,818</u>	<u>141,868</u>	<u>2,474</u>	<u>659,160</u>	<u>674,043</u>
<i>carried forward</i>					

**BEACONSFIELD PCC**

Registered charity no : 1132259

**NOTES TO THE CONSOLIDATED FINANCIAL STATEMENTS (Continued)**

For the year ended 31 December 2022

**3. ANALYSIS OF EXPENDITURE (Continued)**

	Unrestricted Funds £	Designated Funds £	Restricted Funds £	2022 Total £	2021 Total £
<b>3.2 Expenditure on charitable activities</b>	<b>514,818</b>	<b>141,868</b>	<b>2,474</b>	<b>659,160</b>	<b>674,043</b>
<i>Brought forward</i>					
<b>Grants</b>					
Church overseas					
Missionary societies	5,800	-	-	5,800	7,594
Relief and development agencies	11,600	-	-	11,600	12,656
Home missions & Church societies	6,400	-	-	6,400	7,350
DCC Outside Giving	8,820	-	-	8,820	11,933
	<u>32,620</u>	<u>-</u>	<u>-</u>	<u>32,620</u>	<u>39,533</u>
<b>Total Charitable activities</b>	<b>547,438</b>	<b>141,868</b>	<b>2,474</b>	<b>691,780</b>	<b>713,576</b>
<b>3.3 Expenditure on management costs</b>					
Audit	9,255	-	-	9,255	6,638
<b>TOTAL EXPENDITURE</b>	<b>593,886</b>	<b>182,156</b>	<b>2,474</b>	<b>778,517</b>	<b>768,767</b>

**4. STAFF COSTS**

	2022	2021
Staff Salaries & Honoraria	143,975	106,009
Employers NIC	8,145	3,785
Pension	1,482	1,006
	<u>153,602</u>	<u>110,800</u>

No clergy (who are considered key management) or trustees received remuneration in the year from the DCCs or PCC. None of the employees were paid at a rate of £60,000 per annum or more. Team members were reimbursed travelling and other expenses totalling £520 (2021: £5,615).

	2022	2021
St Mary's Clergy	0	4,500
St Michael's Clergy	0	0
St Thomas' Clergy	520	477
Youth work	0	638
	<u>520</u>	<u>5,615</u>

There were no other disclosable expenses in respect of Team members or persons closely connected with the PCC. In accordance with the practice of the Church of England, the clergy is remunerated by the Diocese of Oxford and the costs are included in the Diocesan quota in note 3.2.

The average number of key staff employed during the year was 7 (2021 : 6)

The year ended with 2 Clergy, 1 Associate Priest, 0 Youth & Outreach Worker, 1 Licenced Lay Minister. 6 part time office and buildings managers and hall administrators were also employed.

Reverend Sharon Roberts licensed as Team Rector 3rd May 2023 (Jeremy Brooks left 30th September 2021).

There are also number of other posts e.g. Organist, Choir Director, Community Magazine Editor, Hall Booking administrator who receive payments / honoraria.



**BEACONSFIELD PCC**

Registered charity no : 1132259

**NOTES TO THE CONSOLIDATED FINANCIAL STATEMENTS (Continued)**

For the year ended 31 December 2022

**5. FIXED ASSETS**

Tangible fixed assets for use by the Team	Freehold Property £	Fixtures & fittings £	Total £
Cost as at 1 January 2022	976,975	436,379	1,413,354
Addition	-	-	-
Cost as at 31 December 2022	976,975	436,379	1,413,354
Depreciation as at 1 January 2022	343,242	164,611	507,853
Charge for the year	17,490	41,907	59,398
Depreciation as at 31 December 2022	360,732	206,518	567,251
Net book value at 1 January 2022	633,733	271,768	905,501
Net book value at 31 December 2022	616,243	229,861	846,104

**Freehold property****Freehold land and buildings at 26 Candlemas Mead, Beaconsfield**

This property, used by the Curate/Families Worker when in post, was acquired with the aid of a mortgage from the Beaconsfield Church Educational Trust together with interest free loans all of which have now been fully repaid. The property was insured for £312,411 in 2022. Depreciation is charged at 2% p.a. on the cost of the buildings which is taken to be 2/3 of the total cost of the property.

**The Old Rectory**

The Parochial Church Council sold a 199 year lease on the Old Rectory in 1994 and at the end of this period, its use returns to St. Mary's. The proceeds of the sale formed part of the financing of the construction of the Fitzwilliams Centre.

**St. Thomas' Church Hall**

Under the provisions of Financial Reporting Standard 15, the Church Hall was revalued at £nil, and the PCC is of the opinion that this valuation continues to be appropriate under FRS102.

**The Fitzwilliams Centre, Beaconsfield**

The Fitzwilliams Centre is vested in Diocesan Trustees (Oxford) Limited on behalf of the PCC. The District Church Council of St. Mary's is responsible for the maintenance of the Centre and receives the income from lettings. The property is insured for £1,726,203. Depreciation is charged at 2% p.a. on the cost of the building.

**St Michael's Church Community & Resource Centre**

The Church Hall which is over 50 years old and the Community and Resource Centre (CCRC) plus contents are insured for £2,900,000 in total. Depreciation is being charged on the CCRC only at 2% p.a.

**BEACONSFIELD PCC**

Registered charity no : 1132259

**NOTES TO THE CONSOLIDATED FINANCIAL STATEMENTS (Continued)**

For the year ended 31 December 2022

	2022 £	2021 £
<b>6 INVESTMENTS</b>		
St Mary's CoE Investment Fund	<u>89,348</u>	<u>101,209</u>
We invested £100k in the CBF Church of England Investment Fund in July 2014. In 2018 we sold part of the investment releasing £60k cash and realising £15,120 profit. The remaining investment is now valued at £89,348. An unrealised loss of £11,861 is reported in the year.		
Investment value at 1 January 2022	101,209	
Sale		
Realised Gain		
Unrealised gain / (loss)	(11,861)	
Investment at 31 December 2022	<u>89,348</u>	
Initial Investment at July 2014	100,000	
Sale	(60,000)	
Realised Gain	15,120	
Unrealised Gain	34,228	
Investment at 31 December 2022	<u>89,348</u>	
<b>7 DEBTORS</b>		
Sundry debtors	-	-
Income tax recoverable	22,850	16,903
Prepayments	2,121	1,997
	<u>24,971</u>	<u>18,901</u>
<b>8 LIABILITIES : amounts falling due in less than one year</b>		
Sundry creditors and accruals	101,462	67,816
Community magazine	-	-
Audit and accountancy	-	-
Outside giving	2,509	5,509
	<u>103,971</u>	<u>73,324</u>



**BEACONSFIELD PCC**

Registered charity no : 1132259

**NOTES TO THE CONSOLIDATED FINANCIAL STATEMENTS (Continued)**

For the year ended 31 December 2022

9

**9.1 Designated funds**

<b>Fund names</b>	<b>Purpose</b>				
Fitzwilliams Centre	A meeting centre for the Parish and community				
26 Candlemas Mead	Accommodation for youth & outreach worker/curate				
St Michael's Fixed Assets Fund	To hold the remaining fixed assets of the churches				
St Thomas Café Fund	Development of Community Café				

<b>Fund names</b>	<b>Balance b/forward 01/01/2022 £</b>	<b>Incoming resources £</b>	<b>Outgoing resources £</b>	<b>Transfers £</b>	<b>Balance c/forward 31/12/2022 £</b>
St Mary's Fitzwilliams Centre	325,000	-	(11,000)	-	314,000
PCC 26 Candlemas Mead	145,641	-	(2,566)	-	143,075
St Michael's Fixed Asset Fund	195,750	-	(18,482)	-	177,268
Designated Fixed Assets Fund	666,391	-	(32,048)	-	634,343
St Thomas' Café Fund	53,754	97,407	(149,775)	-	1,385
St Thomas' Holtspur Senior Citizens		2,460	(333)	-	2,126
	53,754	99,866	(150,108)	-	3,512
	<b>720,144</b>	<b>99,866</b>	<b>(182,156)</b>	<b>-</b>	<b>637,853</b>

**9.2 Restricted funds**

<b>Fund names</b>	<b>Purpose</b>				
<b>St. Michael's</b>					
Bulrushes	For Toddler Group / Youth Work				
Garden of Remembrance	For Remembrance Garden upkeep				

<b>Restricted funds</b>	<b>Balance b/forward 01/01/2022 £</b>	<b>Incoming resources £</b>	<b>Outgoing resources £</b>	<b>Transfers £</b>	<b>Balance c/forward 31/12/2022 £</b>
<b>Fund name</b>					
<b>St. Michael's</b>					
Bulrushes	3,153	-	-	-	3,153
Garden of Remembrance	2,369	2,527	(2,474)	-	2,422
	<b>5,522</b>	<b>2,527</b>	<b>(2,474)</b>	<b>-</b>	<b>5,575</b>

## **BEACONSFIELD PCC**

Registered charity no : 1132259

### **NOTES TO THE CONSOLIDATED FINANCIAL STATEMENTS (Continued)**

For the year ended 31 December 2022

#### **10 CONTINGENT LIABILITIES**

There were no contingent liabilities in the Team or the PCC at the year end (2020: £nil)

#### **11 CONNECTED PERSONS**

- 11.1 The Beaconsfield Church Education Trust is a registered charity no: 1048607. The Trust gave grants of £33,000 (2021: £33,500) to the Beaconsfield PCC during the year. The Rector and Churchwardens of St Mary's, St Michael's and St. Thomas' are Trustees of the Trust.
- 11.2 The Friends of St.Mary's is a registered charity no: 1094574, whose trustees are appointed by the District Church Council of St.Mary's. The object of the charity is to broaden the support of St Mary's beyond the immediate congregation and to use funds raised for the fabric of the Church and Churchyard as well as to assist the wider mission of the Church.
- 11.3 Some Trustees made regular giving donations during the year totalling £31,092 (2021: £26,147). There are no conditions attached to these donations which include £6,020 for the Dove Café.



