

PCC ANNUAL REPORT 2021



A View from the Team...

As we know, 2021 was a difficult year for everyone, not least for us here in Beaconsfield, but fellowship and teamworking have seen us through, as they do. In fact, “seeing us through” doesn’t do justice to the many achievements of the year, just a few of which are mentioned here.



The year closed with the Dove Café poised to open to the public in February 2022 with the whole church – inside and out – transformed both in appearance and in its missional goal of community engagement, branded as “coffee and kindness”. There is more about The Dove later in this report but thanks are due here to members of the Project Team which has delivered the café and the Management Team which will now oversee its operation, especially given that both have been long-term collaborations between St Thomas’s and St Mary’s. Furthermore, the café opens with an extensive volunteer team drawn from all three of our churches – and beyond – so that pool of fellowship and team working widens still more. The envisioning and delivery

of such a major project during this time of Team Rector vacancy makes an already major achievement truly amazing!

Like so many other churches and organisations, the Team faced ongoing financial challenges during 2021 and the significant shortfall of income against expenditure in the year continues to be a cause for concern. A priority for all three churches for 2022 is to find ways to address these challenges and work is underway to review stewardship schemes, develop alternative ways of giving and maximise hall income.

2021 began, of course, in a further lockdown between January and April, which surely lasted longer than anyone might have imagined. Our worship, though, continued without pause, thanks to the livestreaming of services from St Mary’s directly into our homes, led by Michael, Margot and Sharon, and also daily Night Prayer recorded by talented members of our churches. Thanks are due, also, to those behind the scenes who made that broadcasting possible – and continue to do so, week by week.





In a year which has been very far from “normal” in all sorts of ways it was a tremendous achievement, too, not only to hold the Country Fayre this year but to welcome what seemed to be even more people than usual to enjoy being outdoors together at a fun, uplifting event which made a tremendous financial contribution to many charities and community groups. It was wonderful just to stop and say hello to people we had not seen for so long - and the range and quality of “street food” on offer was a particular joy! Well done to Sylvia Jones and all involved in making it happen.

In June we said farewell to Youth and Outreach Worker Michelle Fotherby, wishing her well as she prepared to commence ordination training as a Pioneer Minister later in the year.

This has surely been a year when special thanks are due to the heroic commitment and contribution made to our community life by Margot, as self-supporting minister at St Mary's, and to the lay leaders and members of our churches, especially at St Mary's, who have shouldered the considerable burden which falls to any church in vacancy and particularly came to us here in Beaconsfield last year.

The whole year was tinged with sadness at the continuing absence of our Team Rector, with Jeremy officially leaving the parish in September. Jeremy, and Dorothy, had been part of Beaconsfield life for 11 years and their absence from our spiritual and community lives, and the manner of that departure, left a shadow over the whole of 2021. We owe it to them both – and to ourselves – to acknowledge our thanks and gratitude for all that we have gained as church community and as individuals through that ministry, over those years. 2022 brings a new beginning for us all and our prayer is that it will be a fruitful and happy one, full of the hope and promise which the Gospel gives us.

And so we look ahead to those new beginnings, to welcoming a new Rector for the Team and for St Mary's, and for the contribution we each of us can make to both work ever more closely together and look ever more widely outwards to serving our community and our world.

Sharon.

Michael

St Thomas'

At the time of writing, at St Thomas' we are all excited as the Dove café opens. We remain deeply committed to serving the needs of the Holtspur community. Despite numerous setbacks, the building of a community café inside our church is complete. We give our love and deep gratitude to the amazing café project team. We are immensely grateful, too, for many incredibly generous individual donations and institutional grants that have made this project possible. Both the inside and the outside of St Thomas' Church have been transformed.

The new church windows are beautiful and let light shine through the building. Work is still ongoing, primarily outside, with repairs to the car park and some tarmac surfacing alongside the far side of the hall to be completed.

Formal worship has continued to move towards a post-pandemic 'new-normal'. We have established a settled pattern of two Sunday Services each week at 9.30am and 4pm. The numbers at the 4pm service were unaffected by the clocks going back. The monthly children's story time at 4pm is attracting more families with requests for it to happen more frequently. During the week, a prayer group meets in church at 12 noon on Mondays, Tuesdays and Wednesdays. A house group has resumed on Thursday afternoons.

Christmas services were scaled back due to Covid, having just three services - a carol service, stories for children and a Christmas Day Communion Service.

Each Wednesday there is a Senior Lunch in the hall where a freshly home cooked meal is available for £3.50. This has been very well received and is attracting more people each week.

In November there was a Remembrance Dinner which raised funds for The Dove Café and Helping Homeless Veterans. In January, there was a four course meal for Burns Night, complete with piper, funds raised this time being shared between hall revenues and Food for the Hungry. Our thanks go to Fi Mackenzie for both the senior lunches and the fund-raising dinners. We are also hugely grateful to Fi for masterminding a great transformation in the area between the vicarage, the hall and the church. We are just a few weeks away from a resumption of her 'a riot of colour', as springtime indicates an awakening from the current woes in many ways.

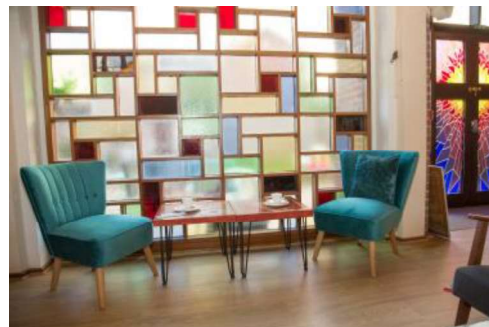


Our toddler group Tom's Tots is now well re-established each Tuesday morning during term time. We have around 20-25 children each week, although not always the same children as there are many more who have registered with us. We continue to attract new families, many hearing about us from others who already attend the sessions.



Bookings for the hall, lounge and church are varied and many. It is anticipated that these will increase with the opening of the Dove Café.

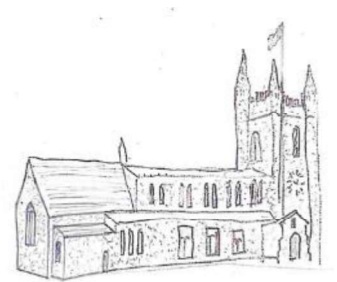
We also look forward to a resumption of many other activities. The Beaconsfield Advisory Centre has made a new home at St. Thomas'. BAC is a fellowship of Christians whose aim is to use their various gifts by volunteering their time to give back to the community. We hope that the ecumenical Oasis Bereavement Support Group will return monthly in our hall for an opportunity to talk and get to know each other over tea and cakes; that the local Senior Citizens social club once more makes use of our church and hall to enjoy a programme of talks, music and occasional outings; that residents are invited to various social events, including our popular film-show tea parties. For all this, and for much more, we owe great thanks to our Vicar, Michael, to Ruth and Derek Moores and to the DCC team, wardens and lay leaders.



Our supported charities show that our outreach stretches beyond the local community to the needs of the wider world. Among many others, they include Mission Aviation Fellowship, an international Christian aviation organisation serving around 30 developing countries to reach people living in some of the world's most isolated communities and Food For The Hungry, a Christian organisation engaged in sustainable development work in some of the poorest regions of the world. We are a friendly, welcoming and caring church community, and, as you can see, our wish is that we grow together in faith with support and encouragement.

St Mary's

The year 2021 for St Mary's was very different to any we have ever experienced in the past. The pandemic continued and it was with sadness that we announced that Jeremy was leaving the parish after 10 years' service with us.



We moved in and out of lockdowns and adapted accordingly to keep our congregations safe whilst at the same time having as many services as possible.

Services during 2021:

- Daily Prayer resumed in person in rotation across the three churches over the week. Morning Prayer at St Mary's was Thursday at 9am
- Mid-week Holy Communion was offered from April at St Michael's for the whole team
- 8am in-person and livestreamed Book of Common Prayer service at St Mary's from May – August once a month, then from September - December twice a month. All led by Rev Margot Suter.
- 10am Sunday services in person and livestreamed
 - ♦ First Sunday leading and preaching Rev Margot Suter
 - ♦ Second Sunday leading Rev Margot Suter with visiting preacher
 - ♦ Third Sunday Rev Sharon Roberts or Rev Michael Johnson leading and preaching
 - ♦ 4th Sunday leading and preaching Rev Margot Suter
 - ♦ 5th Sunday leading Rev Margot Suter with visiting preacher or team service
- Visiting preachers included Rev Canon Chris Bull, Rev Gareth Morley, Venerable Guy Elmore, Hazel Chow LLM, Rev Ian Fishwick, Rev Nick Malony, Peter Laing from Newham Renewal Programme and Mark Dykes from Wycombe Homeless connection.
- There were two choral evensong services at 6:30pm, in person and live streamed, in September and October lead by laity.
- From September the YouTube Family online service was offered once a month.
- From September we resumed Family Service each month led by Rev Margot with a talk by members of the congregation.
- Junior Church during our 10am service resumed for primary school children from April 2021 with a new team of dedicated helpers.

Special Services during 2021 included:

- Ash Wednesday service on Zoom, 17th February
- Mothering Sunday 14th March (only online, 8am BCP and 10am service)
- National Day of Reflection to mark a year since first lockdown, 23rd March, (online only)
- Palm Sunday Passion reading recorded on Zoom and played at Palm Sunday online service.
- Maundy Thursday evening Holy communion service (online only), 1st April
- Good Friday reflections (pre-recorded service online only), 2nd April
- Easter Fire pre-recorded service online
- Easter Day family Holy communion service in-person and livestreamed.
- Family Harvest Service, 3rd October with window decorations of flower filled jars
- Remembrance service at War Memorial with Team Civic service of Morning Prayer, 14th November
- Advent Carol service of lessons and advent hymns,
- Family Toy service, 2nd December where a generous collection of wrapped gifts were received for the Church Army.
- Traditional lessons and carols, 19th December
- Retelling the Nativity Story and Midnight Mass, on Christmas Eve with window decorations of greenery and storm lanterns with large candles.
- 8am BCP and 10am Family Holy communion service on Christmas Day
- Other offerings included an Easter Story outdoor prayer walk in the church yard during Holy Week, COVID focused prayer stations in the church, and Playmobil Christmas story posters on the church fence on Windsor End during December.



It is wonderful to welcome the wider church family and the local community in the town to many of the special services.

Life events continued to be an important part of church life in 2021 with:

- 10 interments
- 23 funerals, 10 of which were in church
- 15 weddings
- 16 baptisms
- 2 marriage blessings
- 2 children were prepared and admitted to Holy communion



For some individuals and families this is their first contact with church, or a renewal of contact, and we are encouraged that for many of them it is the start of more regular contact whether through special services or through more regular worship. Through baptism and marriage preparation programmes and regular events and activities for children and families as well as ongoing pastoral support and fellowship we aim to offer opportunities to all for further involvement and development of their faith.

Pastoral care

Our Pastoral Care team kept in touch with many people offering support where needed either by phone call or increasingly home visits. Sadly, the number of lay volunteers involved across all aspects of worship and in church life declined during the year due, understandably, to concerns over the pandemic.

It continues to be challenging for House group membership which has largely had to be sustained through online engagement through Zoom calls with some in person meeting in the summer when restrictions allowed.

Margot as House group chaplain, met online with the leaders in May. Groups reported the difficulties in engaging with bible study or theological discussion over Zoom but appreciated the emotional support members gave each other in such uncertain times. At the end of 2021 there were 8 house groups with 67 members in total. .

Margot is grateful to the leaders for their care and support for those in their individual house groups.

The wider community

Hazel Chow LLM in the absence of the Rector has taken on engagement with the wider community in her role as Town Chaplain.

She has chaired the Churches Together meetings for ministers, arranged the War Memorial and Civil services on Remembrance Sunday and the Armistice service for schools on 11th November.



The Beaconsfield Team Ministry worked with Bekonscot management to put on an outdoor Carols by Starlight service at Bekonscot on 12th December attended by 200 residents..

Engagement with schools continued to be limited due to the pandemic with Sharon and Michael being the main contacts for schools. 4 schools planned carols service in



person in the church in December but due to the concerns over Omicron variant only Beaconsfield High School had their service in person, the other schools pre-recorded in the church and went online.

The Wooburn Singers had two concerts in church during the year, St Mary's Choir performed an Armistice Day recital with music and poetry and the Chiltern Band had a concert in December. The church space was used by the Fine Arts Society for its meetings so it could offer both in person and livestreamed options.

St Michael's

2021 felt like another year of opportunity and challenge – particularly the latter! We might have hoped that with the advent of vaccines our world would have returned to something recognisably B.C. (Before Covid) but alas it was not to be.



But if a long lockdown from January followed by a slow, cautious relaxation in late spring and summer brought its challenges it also brought opportunity, with the continuing offering of innovative on-line worship by many lay members of St Michael's and the Team churches, and a most moving Ash Wednesday service on Zoom before our joyous return to worshipping together in church, perfectly timed for Easter Day. Resurrection indeed!

Sadly, the challenge continued with our pressing need to maximise church income during a year when, as in 2020, hall and CCRC room hire was much reduced. Two innovations helped us hugely in our stewardship quest during 2021 – the extended promotion of the fantastic Parish Giving Scheme as the way to give regularly to St Michael's and the introduction of contactless one-off giving through the "Goodbox", now to be found at the back of church for retiring collections. At a time when volunteer resources are stretched in every direction the church must embrace those systems and processes which make best use of time and energy, so we are most thankful for those members of St Michael's who have switched to using these methods, as well as the Golden Giving scheme, as their means of financial giving.

During the year we had the excitement of St Michael's becoming a film location for a BBC "Silent Witness" episode and also for a private filming project. It was truly fascinating to see how the church was transformed – and how it all came back together again at the end of the shoot! It was an opportunity to engage with literally scores of film crew, outreach which doesn't often come our way.

Our Plant Sale in May was a great success too, with £2,000 raised and a wonderful sense of church and wider communities coming together on a hugely enjoyable day celebrating God's creation and human "green fingers".

Tremendous thanks are due to all our plant growers, whose time and trouble extends over weeks and months of preparation, as well as to those who helped on the day.



There has been the usual round of hellos and goodbyes, notably a farewell to our Office Manager, Zoe Lawrence (thankfully still very much part of the St Michael's family, together with daughter Florence) and the arrival in the Parish Office of Christine Adali, who works across both St Thomas's and St Michael's admin roles, an arrangement which works brilliantly and to the benefit of both our churches. Some long-standing St Michael's members moved away during the year and new families have arrived in the area and become part of our church life, and we have, of course, said sad and fond farewells to Joy Clark and to David Baker, giving thanks for their lives, their friendship and their long, faithful service to St Michael's.

And so on to worship. We have continued with a 10am Sunday pattern of different services each week, something for everyone, with All-Age 2gether services on 2nd and 4th Sundays proving to be the most popular, involving, as they do, children and young people in many aspects of the service. 2gether is always Eucharistic, so we were delighted to welcome seven St Michael's children taking their First Communion on Advent Sunday, following preparation held for a total of 10 children from across our Team churches.

It could be said that in 2021 our worship was across the threshold in a literal sense, with Advent and Easter displays mounted outside the church and a Remembrance Season display, to be visited at any time of day, inside. Tightening Covid restrictions found us on Christmas Eve not with a conventional Crib Service but both "inside" and "outside", as church doors opened to the knock of the (outside) congregation and revealed children (inside) dressed in character and telling their part of the nativity story.

Regardless of Covid infection levels and restrictions, we will no doubt stay with our “across the threshold” theme in 2022, the threshold which blurs “inside” and “outside”, whether that is a church building or a church community, bringing people closer to God and to each other, both as part of the St Michael’s family, and through building wider relationships within the community we serve. This will bring to fruition the vision and strategy reviewed and renewed by the DCC in a Mission Action Plan agreed in 2021, which every one of us can own and contribute to, and which sets the direction of travel for the St Michael’s journey over the next three years.

A major excitement for 2022 will, of course, be the appointment of a new Team Rector and Rector of St Mary’s – all prayers for that particular journey to unfold and arrive, and to build on the energy, commitment and love shown to St Michael’s, St Mary’s and St Thomas’s by Jeremy Brooks, to whom we owe a debt of gratitude as his 11 years of ministry in Beaconsfield came officially to a close in September.





2021 has been the year in which the Beaconsfield team came together and achieved something amazing. The Dove café has been built and is now open.

After two years of planning and fundraising, we put the finishing touches to the building specification in January 2021 and went out to tender. We secured the services of a wonderful builder, John Wood, and he and his team began work on June 3rd when the hoardings went up and the foundations were dug. It has not all been plain sailing. There were structural difficulties to overcome and some changes to the plan were forced upon us, but we got there.

St Thomas' church has been transformed. The ugly exterior on the north side has been updated, a new accessible entrance created and the interior transformed into a vibrant, warm and welcoming space for us to serve our community.



The plain north wall before its transformation and as it is today

Our most exciting moment was when the new windows arrived in late December. Thanks to a generous individual donation, we have been able to replicate the windows on the south side of the church and Jonathan and his team from Silva Furniture Ltd of Ibstone, worked long into the night to put them in place before the New Year.



The new windows arrived late one afternoon on 29th December and were installed just before New Year.

This has truly been a team project. The Café Project Team of Michael, Steve, Gill, Derek Ruth and Alison were drawn from across the parish. When the exterior was almost complete we created the Plumage Group to pay attention to the look and feel of the interior. The group was made up of talented people with connections throughout the parish.

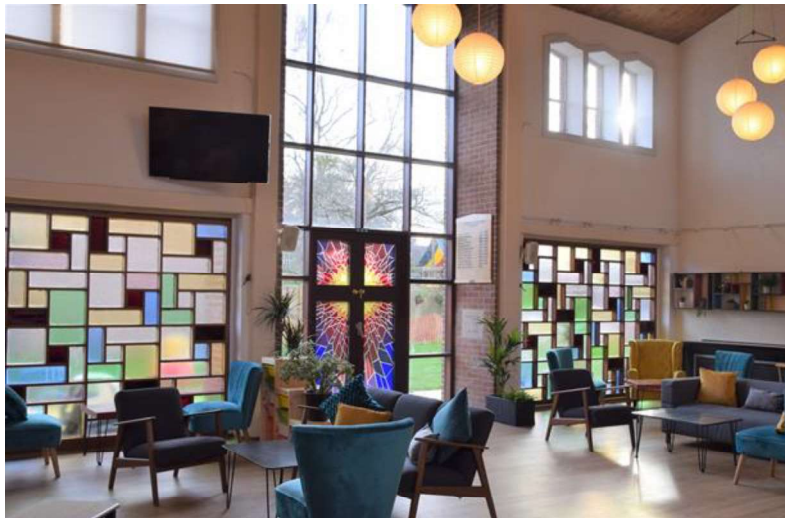


Most of all, we have been supported by the prayers of individual church members from St Mary's, St Michael's and St Thomas' and by the practical support, encouragement and generous donations from all three churches.

We are also grateful for the army of volunteers who have come forward from our churches and the town to serve in the café and help us reach out to our local community.

We are conscious that none of this would have been possible had we not felt the presence of God throughout the project. He has blessed us in so many ways. He has encouraged us when we stumble and guided us when we are uncertain. We are humble when we think how he has worked through us to achieve this.

We look forward with confidence and trust in God to the months and years ahead when the Dove café begins to transform the lives of the people in our community as it has transformed the interior and exterior of St Thomas' church building. The Dove café will become a beacon of hope and a haven of comfort for the people we serve in this town and we thank our God for it.



Finally, the Dove café has been made possible not only by the faithful prayers of local people but by the generous support of local businesses and our funders for whom we are truly grateful.

Outside Giving

The committee met twice in 2021, once on Zoom and in November in person to review and pray for the work of the chosen charities. No changes to the charities the team supports were made during the year.

Mission Aviation Fellowship – Derek Moores

Daily newspaper headlines can make for depressing reading. Television reports from around the world can be hard to watch. Some days, you can wonder whether your efforts in life make any difference whatsoever.

Fortunately, at MAF, we get to hear good news every week. MAF Pilot Roy Rissanen recently sent details of an emergency flight in Liberia that saved the life of little Sangai:

‘On Friday afternoon at a remote village, I picked up a five-month-old girl called Sangai who was infected with a flesh-eating parasite. She was extremely ill.

Healthcare in the countryside is limited, so I flew Sangai and her mum immediately to the capital Monrovia. (The doctors in her village told me the baby would never survive ten hours on a road in the wet season... on the back of a motorbike.)



From the airfield, they were driven by MAF car to the ELWA — Eternal Love Winning Africa — mission hospital because an ambulance wasn't available.

Margot Biggs, wife of my fellow pilot Steven, works at this hospital and is very happy to report that Sangai is in a good condition following a successful operation!

In Myanmar work on the new airstrip at Lailenpi ceased due to the monsoon and the deteriorating security situation. Although the monsoon has ended, security has continued to worsen so work on the airstrip cannot resume. The small national team is providing a limited response to the medical needs due to Covid. MAF continues to monitor the growing humanitarian crisis and could join an international response.

In other news the MAF Global Week of Prayer was 31 Oct – 7 Nov 2021. Permission has been given to start a new programme in Guinea which will use the C208 Grand Caravan previously in Mongolia. Nigel Clark, a new member of the MAF speaker team spoke to the congregation at St Mary's on 30 January 2022 giving an illustrated talk and personal testimony. The coronavirus pandemic is affecting many of the countries MAF works in, particularly Timor-Leste and Papua New Guinea. In Tanzania there is misinformation that the vaccine affects fertility.

Sharon International Ministeries (SIM) – Tom Holyer

At present the school is open with 650 pupils attending, aged between 4 and 15 years old. They are being taught by 30 teachers who have all been vaccinated. Social distancing and wearing of masks is mandatory in the class room.

This year School Leaving Certificates will be awarded after the Senior Class, numbering 40 pupils, have taken their exams in March. They are confident of obtaining good results, which will enable them to continue in further education, albeit away from their homes.

In 2021 we were able to send £20,000 which paid for the teachers' salaries as the teachers were furloughed, and were on half-salary, so fulfilling SIM's commitment regarding teachers' pay – thanks in particular to the Outside Giving's considerable donation of £6,750 which was 33% of the amount that was sent to India this year.

This year SIM's commitment is £30,000 and so 3 fund-raising events are planned:-

Saturday, 19th March, - concert, by the Wycombe Orpheus Male Voice Choir in St. Michael's Church

Sunday, July/August – Ploughman's Lunch in the Garden

October/ November – Curry Evening

School after renovation



Senior class now



Newham Renewal Programme – Bill Edwards

The Newham Renewal Programme celebrated its 50th birthday and a group of us attended a wonderful celebration in Stratford Old Town Hall. We were also able to give them a birthday gift of £1,500 which were the proceeds of a sponsored walk supported by us all.

We once again couldn't hold our quiz or host our annual day out to Beaconsfield. However, we were delighted to welcome Peter Laing, C.E.O to our Harvest Festival where he spoke movingly about the work they do and the effects of the pandemic. Despite the difficulties of lockdown, we were able to make a number of trips with food, clothing, and housewares.

Our Christmas run of toys and clothes took place after the mountain of gifts so generously given were gathered in and converted to parcels. They had even laid on a shared lunch for us when we arrived.

They were looking after 470+ families via their food bank, opened a Community Hub café, started Chat Newham for people who just needed to talk, and Connect Newham. They now employ a full-time legal expert to support 138 individuals with their issues, and continued with many of their ongoing activities. It was a heroic effort on their behalf to support so many people. As ever they were so incredibly grateful for our love and support – which makes us feel so humble given the difficulties they face daily.



Embrace the Middle East – Rose Shimwell

The EMBRACE charity is based in Amersham; they have worked with Partners and local churches in the Middle East for many years. Part of the Outside Giving goes towards the EMBRACE mission partners working in Lebanon to help Syrian refugees. Some of the Christmas Collection from St Mary's is sent to the EMBRACE general fund in the Middle East.

EMBRACE work with local partners getting involved with programmes and projects to help those living in poverty. In Lebanon approximately 1.5 million refugees live in tented villages. Recent demonstrations and political unrest has

resulted in more refugees and Lebanese families living in poverty and struggling to survive. The situation in Syria is much worse.

Despite the recent challenges of the Covid pandemic and economic collapse EMBRACE partners have continued to provide health, educational and training opportunities especially for young women. Other programmes include emergency and winter relief programmes targeting the most vulnerable. In Syria two partner organisations work in health care and provide a safe space for traumatised children.

New Generation Burundi – Derek Moores

New Generation's mission is to incite notions of spirituality, culture and socio-economic development among young people and children so that they can become servant leaders of the nation. They have 4 programmes; socio-economic reintegration; training and coaching in leadership and entrepreneurship; return to school; awareness, advocacy and youth engagement.

Our support for this project in Burundi continues. It is particularly important during the Covid pandemic where regular income is so helpful to this charity which has a continuing need to support the many street children and orphans in one of the world's 39 poorest countries. As well as caring for these children they provide the older children with leadership training which is particularly useful with covid prevention. The following extract from their recent report gives a good idea of the many challenges that they have had.



Beaconsfield Advisory Centre

Clients have presented with problems that are often very complicated and we are fortunate to have a panel of specialist advisors who are able to help. We had clients reliant on food banks and sadly have had to deal with more debt problems during this time.

We offered a free transport service for medical appointments for clients living in the HP9 area and our drivers take them as far as Oxford, Mount Vernon, and Stoke Mandeville, as well as local appointments.

We were so grateful to our volunteer drivers who gave up their time to do this valuable task. There were 26 people from St Mary's involved as advisors plus more as drivers.

We worked closely with Better Connect Beaconsfield and took over their transport requests.

With the present lockdowns we had to restrict the numbers of drivers.

Advisors went into the Centre to man the phones and were also manning them from home.

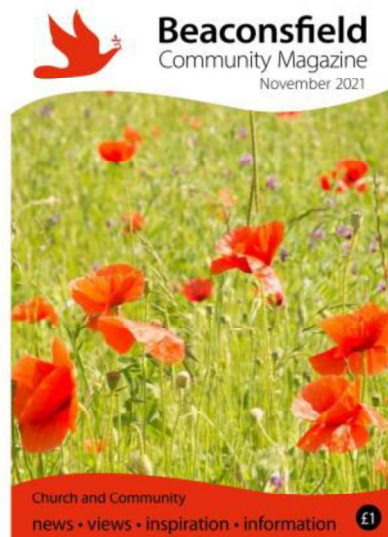
We are now seeing clients at the Centre but by appointment only.

We are in the process of opening an office in the Dove, Holtspur on a Tuesday morning from 10-12noon.

Beaconsfield Community Magazine

The year started with hope that very soon things would return to 'normal.' But what happened was rather different. We were very grateful for our loyal subscribers, distributors & deliverers and advertisers.

With several activities still online or cancelled, including the Beaconsfield Community Festival, we appreciated the many contributors who continued to support the magazine. It was wonderful to cover the return of Lighthouse Beaconsfield, after a two-year absence and the Country Fayre and Festival of Lights, both of which had been missed in 2020.



For the past 10 years Jeremy had written an opening note at the start of the magazine and we were indebted to Hazel Chow who agreed to fill this role and prepare a monthly note from the Town Chaplain.

Editorial

In the first issue of the year, we launched a new feature in which local clergy spoke of their faith heroes. Hazel Chow, Paul Cornelius, Fr Seán Healy, Michael Johnson, Tom Williams, Padre Shyju from St Teresa's, Matt Jones of Hope Church, Nigel Douglas and Sharon Roberts all participated in this new series.

As ever we thank the various members of the clergy and parishioners who contribute to the monthly 'God slot' and offer particular thanks to Heather Duffy and Rhiannon Scott who kindly conduct interviews during the year. We had some very positive feed-back from readers during 2021 particularly in relation to the interviews. Although some meetings took place face-to-face, Zoom enabled interviews to continue when social distancing was required. We met Andy Tagg, Headteacher at Holtspur Primary school, Chris Burley on his retirement from the pastoral care team, Peter Tang, Headteacher of The Beaconsfield School, Andrew Farncombe on his role as High Sheriff of Buckinghamshire, Steve Butler, Headteacher at Butlers Court School, Chris Wayland & Jo Rasenburg, proprietors of the Hibiscus Supper Club, Soslan and Zarina Salamov of Salanti Pies, Victoria from Benedict's Store in Gregories Road, Vicki Marsh, chocolatier of Prescotts, Bhavini Mistry of the Sass & Spice cookery school, Kate Gater, Head Teacher at High March, Celia Harding on her retirement from the Jack & Jill nursery,

Alex Osei Bonsu from the charity, the Christian Eye Foundation and the current mayor, Alastair Pike.

Apart from the regular church & community news, we also covered among other things the 50th anniversary of both St Mary's Toddler Group and the National Film & Television School. We were also happy to cover The Beaconsfield School's long-standing Art & Craft Fair which returned soon after covid restrictions were lifted for indoor events. And we were delighted to track the progress throughout the year of the Dove Café and look forward to the official opening in February. We hope it will become a much-loved resource for the whole community of Beaconsfield.

DETAILS FROM THE PARISH REGISTERS



Advertising

2021 was, as expected, a difficult year for advertising as a few of our long-standing advertisers had not renewed following the restrictions of 2020. The income from advertising in 2021 was down by 9% against the previous year. One positive contribution during the year was the higher than usual number of bookings for one-off adverts.

Subscriptions and Distribution

We thank Sally Masters very much for her continuing role in handling the subscriptions and monthly distribution of the magazine. Sales of the magazine to subscribers were down in 2021 to a figure of just over 600. In addition, copies are delivered to McColls, The Post Office, Ricki's, The Mayflower and the Library, for sale. Churches all receive copies for purchase, but no cash comes back directly to the magazine from any sales. Sadly, some of our long-standing subscribers have passed away, others have moved from the area, and some have stopped subscribing. However, efforts are being made to encourage new subscribers.

This year we were able to hold our mulled wine & mince pie party as a thank you to all distributors & deliverers. It was a hugely successful occasion, very upbeat and with a very good turnout! Black Friday proved to be a good choice for this event!

Finances

We are very grateful to our extremely efficient treasurer, Nicki Edwards who keeps a close watch on our financials. A financial summary had been prepared as of 31st December 2021. Total income from advertisers and subscriptions was £16.2k compared with £18.6k the previous year. Expenditure exceeded income over the year by £5.8k. The balance in the current account at the year-end was approx. £3.3k while the deposit account remained unchanged at approx. £15.6k.

An increase in the price of the magazine seems overdue since the last increase was in January 2012.. A figure of £1.50 per copy with an annual subscription of £15.00 will be introduced from January 2023.

Production and Printing

Our business continues to be handled very efficiently by Turville printers. and our main contact, Michael Yorke is now assisted by a new employee who seems equally good.

Committee Meetings

The committee, consisting of representatives from all the churches in Beaconsfield, met just once in 2021 on 2 nd February and then an annual review meeting was held on 26th January 2022.

The Beaconsfield Team Ministry

The Team Ministry comprises the Parish Churches of St Mary and All Saints, St Michael and All Angels and St Thomas, Holtspur within the Benefice of Beaconsfield. The Parochial Church Council has assigned to the District Church Councils (DCCs) all the functions of the Parochial Church Council of the parish except for the holding of real estate, the provision of youth activities and Team activities including the Community Magazine, the Alpha course and Marriage Preparation.

The total number on the Electoral Roll for 2021 was 559 (2020 558)

The address for PCC correspondence is:

The Fitzwilliams Centre

Windsor End,

Beaconsfield,

Buckinghamshire HP9 2JW

Telephone number: 01494 676690

Email: info@stmarysbeaconsfield.org.uk

Auditors	Bankers	Legal Advisers
Cansdales Audit LLP	Lloyds TSB plc	Winckworth Sherwood
Bourbon Court	3 Burkes Parade	16 Beaumont Street
Nightingales Corner	Beaconsfield	Oxford
Little Chalfont	Buckinghamshire	OX1 2LZ
Buckinghamshire	HP9 1NR	
HP7 9QS		

List of members of the PCC (Trustees) for 2021

The Revd Dr Jeremy Brooks Team Rector (Until September 2021)

The Revd Michael Johnson Team Vicar of St Thomas's

The Revd Sharon Roberts Team Vicar of St Michael's

The Revd Margot Suter Associate Priest, St Mary's

Mrs Hazel Chow Licensed Lay Minister

Mrs Michelle Fotherby Youth & Outreach Worker (Until June 2021)

Mrs Nicki Edwards PCC Treasurer (until May 2021)

Mr Bill Edwards Churchwarden St Mary's

Mr David Bulteel, Churchwarden, St Mary's (from May 2021)

Mrs Harriet Baldwin Churchwarden St Mary's, (until May 2021) PCC Secretary

Mr John Gibbs Churchwarden, St Michael's

Mr Trevor Sharkey Churchwarden, St Thomas' & St Thomas' Deanery Synod representative

Mrs Fiona Collins Churchwarden, St Thomas'

Mr Andrew Farncombe Deanery Synod representative, St Mary's

Professor Derek Portwood Deanery Synod representative, St Mary's

Mr Eddie Weiss Deanery Synod representative, St Mary's

Mrs Wendy Godrich Assistant Warden & PCC representative, St Mary's (from May 2021)

Mrs Tor Saer PCC representative, St Mary's (from May 2021)

Miss Frances Hall PCC & Deanery Synod representative, St Michael's

Mrs Mary Bischoff PCC representative, St Michael's

Mrs Alison Hart PCC representative, St Thomas'

Mrs Catherine Davidson, PCC representative, St Thomas' (from May 2021)

Structure, governance and management

The Parochial Church Council is a corporate body established by the Church of England. The PCC operates under the Parochial Church Council Powers Measure. The PCC is registered with the Charity Commission under registered no: 1132259. The PCC confirms that Members have referred to the Charity Commission's guidance on public benefit, in particular the specific guidance on charities for the advancement of religion, when reviewing the charity's aims and objectives and in planning future activities. The PCC carries out these objectives by activities conducted under its direct control and through those activities assigned by it to the individual churches within the team ministry. Such activities are described in more detail in the report.

The appointment of PCC members is governed by and set out in the Church Representation Rules. The PCC has a Standing Committee whose members are the Rector (Chair), the Team Vicars and Churchwardens from each church (Co-Vice Chairs), the Hon. Secretary and the Hon. Treasurer.

The PCC holds 5 meetings a year with a Standing Committee meeting prior to each PCC meeting. There is a standing item of business at the first PCC meeting following the APCM in which existing trustees are reminded of, and new trustees are instructed of, their responsibilities as trustees. All three DCCs provide representatives on the PCC and report regularly to the PCC on major topics and issues in the individual churches. The PCC prepares consolidated financial statements incorporating the accounts of the PCC and the three churches. A local firm of Accountants is appointed as Auditors.

In 2021, PCC meetings considered financial matters, including the budgets, the Parish share and overall team expenses particularly in the light of the Covid 19 pandemic. There were also regular updates on the progress of the Dove café at St Thomas'.

PCC meetings received regular reports from DCCs and considered other team matters such as outside giving, youth and outreach work and the Community Magazine as regular agenda items.

In 2021 there were 2 additional PCC meetings held, one in August 2021 for PCC and DCC members to understand the vacancy and recruitment process for the new Rector and in October the PCC Section 11 meeting to appoint Parish Representatives.

Risk

The major risks to which the PCC is exposed are identified in risk control registers maintained by the three Team churches and are regularly reviewed and systems or procedures have been established to manage those risks. Risks such as health & safety, lone working and safeguarding are mitigated by regular checks/reviews and ensuring that appropriate controls and insurances are in place. St Mary's manages its investments as part of a balanced portfolio, so that it is protected in the event of those investments losing value.

Related charities

The PCC has the following related charities:

The Beaconsfield Church Educational Trust (BCET) is registered charity no.1048607. The Trustees of the BCET are the Rector, Team Vicars of St Thomas' and St Michael's and Churchwardens of the 3 Team churches in the Parish of Beaconsfield. The PCC received grants to support the work of the Beaconsfield Team Ministry during the year.

St Mary and All Saints Beaconsfield Development Fund (The Friends of St. Mary's) is a registered charity No.1094574 whose trustees are appointed by the District Church Council of St. Mary & All Saints. The object of the charity is to broaden the support of St. Mary's beyond the immediate congregation and to use funds raised for the fabric of the Church and Churchyard as well as to assist the wider mission of the Church.

Property

Within the Parish there are 2 church houses. The PCC owns a house at 26 Candlemas Mead which has been let out commercially from August 2020.

The BCET owns a house at 27 Crossways, which has been rented out commercially from August 2020.

Each of the Team churches is responsible for the management and maintenance of its church centre or hall: the Fitzwilliams Centre, St Michael's hall and Church & Community Resource Centre and St Thomas' Hall.

Reports on the church halls are included in the DCC reports to the PCC.

PCC Reserves Policy

It is the policy of the PCC to have unrestricted cash reserves in each DCC (after setting aside funds earmarked for specific projects, invested in fixed assets or restricted for particular purposes) of at least six months normal recurring unrestricted expenditure in line with prudent practice.

At 31 December 2021 the unrestricted cash reserves totalled £437,575 and represented 9.8 months of normal recurring expenditure (2020: £494,842 10.9 months). This is a consolidation of 3 individual churches and the Team Ministry each with varying levels of cash cover and future spending requirements. Costs associated with the Dove Café, a designated project, have been excluded. Expenditure on the Dove Café in 2021 totalled £167,153 and the excess of income over expenditure at the end of the year was £53,754.

PCC Financial Review

The consolidated financial statements include the financial statements of the three DCCs and the Team Ministry which records the expenditure by the PCC on those activities for which it assumes responsibility and to which the three churches contribute funds.

In 2021 the PCC faced some significant and continuing financial challenges.

All 3 churches had experienced reductions in income during the 2020/21 lockdown periods, affecting property hire (hall booking income), fund raising and social events and plate collections. The gradual opening up from the summer of 2021 meant that income increased slightly during 2021 but by the end of 2021 income across the Team had not re-established to pre pandemic levels.

Stewardship/planned giving schemes had continued during lockdown periods but with reduced congregations as the churches re-opened, giving from these schemes had not grown as anticipated and as in previous years.

The suspension of face-to-face activities and deferment of other activities including property maintenance at the start of 2021 meant that expenditure was also reduced but as fixed costs remained, the significant shortfall of income against expenditure continues to be a cause for concern.

The total Income for 2021 was £678,183 (2020: £595,268) – all of which was unrestricted but includes £195,993 designated to the St Thomas' Dove Café. Excluding restricted and designated funds, total income for 2021 was £482,191 (2020: £573,638). Legacies of £10,000 (2020: £56,000) were recognised in the year. In 2019 St Mary's received a large legacy and recognised £20,000 of this income in the same year. The remainder was held on the balance sheet for future use and £10,000 was recognised in 2021. Regular Giving, including the associated tax recoverable, continues to account for around 62% of all unrestricted income but has fallen by a little over £50,000 to approximately £300,000 in the year.

The total Expenditure for 2021 was £768,767 (2020: £607,249), the increase almost entirely due to the cost of building the St Thomas' Dove Café £167,153. Excluding restricted and designated funds, total expenditure for 2021 was £569,566 (2020: £575,201).

Parish share and staff costs together account for 61% of all unrestricted expenditure. Unrestricted expenses for the PCC stood at £65 per hour in 2021 (£65 per hour in 2020).

In 2021 there was an unrealised gain on Investment Income of £12,723 (2020: £5,716) and Dividends of £2,572 (2020: £2,484). The total deficit for the year was £77,860 (2020: deficit £6,266) with unrestricted income and expenditure showing a deficit of £74,652 (2020: surplus £4,153).

The total funds on the Balance Sheet at 31 December 2021 was £1,395,384 (2020: £1,473,243) of which £5,522 was Restricted and £720,143 was Designated. Unrestricted funds stood at £669,719.

The unrestricted cash at bank at 31 December 2021 was £383,822 (2020: £469,930).

Statement of the responsibilities of the members of the PCC

The members of the Parochial Church Council are required to prepare financial statements for each financial year which give a true and fair view of the PCC's financial activities during the year and of its financial position at the end of the year. In preparing financial statements giving a true and fair view, the members should follow best practice and:

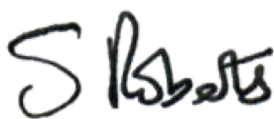
- select suitable accounting policies and then apply them consistently;
- make judgements and estimates that are reasonable and prudent;
- state whether applicable accounting standards and statements of recommended practice have been followed, subject to any departures disclosed and explained in the financial statements;
- prepare the financial statements on the going concern basis unless it is inappropriate to presume that the PCC will continue in operation.

Members of the PCC are responsible for keeping accounting records which both disclose with reasonable accuracy and enable them to ascertain the financial position of the PCC and which enable them to ensure that the financial statements comply with the Charities Act 2011, the Statement of Recommended Practice "Accounting and Reporting by Charities" issued in 2019 and the Church Accounting Regulations 2006. They are also responsible for safeguarding the assets of the PCC and hence for taking reasonable steps for the prevention and detection of fraud and other irregularities.

Disclosure of information to auditor

Each of the Trustees has confirmed that there is no information of which they are aware which is relevant to the audit but of which the auditor is unaware. They have further confirmed that they have taken appropriate action to identify such relevant information and to establish that the auditor is aware of such information.

Approved by the Parochial Church Council on 6 April 2022 and signed on its behalf by:



CHAIR

Independent Auditors Report to the Parochial Church Council of Beaconsfield Team Ministry

Opinion

We have audited the financial statements of Beaconsfield Team Ministry for the year ended 31 December 2021 which comprise of a Statement of Financial Activities, Balance Sheet, Cashflow and notes numbered 1 to 11 to the financial statements including a summary of significant accounting policies. The financial reporting framework that has been applied in their preparation is applicable law and United Kingdom Accounting Standards, including Financial Reporting Standard 102 The Financial Reporting Standard applicable in the UK and Republic of Ireland (United Kingdom Generally Accepted Accounting Practice).

In our opinion the financial statements:

- give a true and fair view of the state of the PCC's affairs as at the 31 December 2021, and of its incoming resources, for the year ended;
- have been properly prepared in accordance with United Kingdom Generally Accepted Accounting Practice; and,
- have been prepared in accordance with the requirements of the Charities Act 2011.

Basis for opinion

We conducted our audit in accordance with the International Standards of Auditing (UK) (ISAs (UK)) and applicable law. Our responsibilities under those standards are further described in the Auditor's responsibilities for the audit of the financial statements section of our report. We are independent of the PCC in accordance with the ethical requirements that are relevant to our audit of the financial statements in the UK including the FRC's Ethical Standard, and we have fulfilled our other ethical responsibility in accordance with these requirements and believe that the audit evidence we have obtained is sufficient and appropriate to provide a basis for our opinion.

Conclusions relating to going concern

We have nothing to report in respect of the following matter in relation to which the ISAs (UK) require us to report to you where:

- the Members of the PCC's use of the going concern basis of accounting in the preparation of the financial statements is not appropriate; or
- the Members of the PCC have not disclosed in the financial statements any identified material uncertainties that may cast significant doubt about the PCC's ability to continue to adopt the going concern basis of accounting for a period of at least twelve months from the date when the financial statements are authorised for issue.

Other information

The Members of the PCC are responsible for the other information. The other information comprises the information included in the member's annual report, other than the financial statements and our auditor's report thereon. Our opinion on the financial statements does not cover the other information and, except to the extent otherwise explicitly stated in our report, we do not express any form of assurance conclusion thereon.

In connection with our audit of the financial statements, our responsibility is to read the other information and, in doing so, consider whether the other information is materially inconsistent with the financial statements or our knowledge obtained in the audit or otherwise appears to be materially misstated. If we identify such material inconsistencies or apparent material misstatements, we are required to determine whether there is a material misstatement in the financial statements or a material misstatement of the other information. If, based on the work we have performed, we conclude that there is a material misstatement of this other information, we are required to report that fact.

We have nothing to report in this regard.

Matters on which we are required to report by exception

We have nothing to report in respect of the following matters in relation to which the Charities (Accounts and Reports) Regulations 2008 require us to report to you if, in our opinion:

- the information given in the financial statements is inconsistent in any material respect with the PCC annual report; or
- sufficient accounting records have not been kept; or
- the financial statements are not in agreement with the accounting records; or
- we have not received all the information and explanations we require for our audit.

Responsibilities of the Members of the PCC

As explained more fully in the Statement of Responsibilities of the Members of the PCC, the members are responsible for the preparation of financial statements which give a true and fair view, and for such internal control as the members determine is necessary to enable the preparation of financial statements that are free from material misstatement, whether due to fraud or error.

In preparing the financial statements, the Members of the PCC are responsible for assessing the PCC's ability to continue as a going concern, disclosing, as applicable, matters related to going concern and using the going concern basis of accounting unless the Members of the PCC either intend to liquidate the PCC or to cease operations or have no realistic alternative but to do so.

Auditor's responsibilities for the audit of the financial statements

We have been appointed as auditor under section 144 of the Charities Act 2011 and report in accordance with regulations made under section 154 of that Act.

Our objectives are to obtain reasonable assurance about whether the financial statements as a whole are free from material misstatement, whether due to fraud or error, and to issue an auditor's report that includes our opinion. Reasonable assurance is a high level of assurance, but is not a guarantee that an audit conducted in accordance with ISAs (UK) will always detect a material misstatement when it exists. Misstatements can arise from fraud or error and are considered material if, individually or in the aggregate, they could reasonably be expected to influence the economic decisions of users taken on the basis of these financial statements.

As part of an audit in accordance with ISAs (UK), we exercise professional judgement and maintain professional scepticism throughout the audit. We also:

- Identify and assess the risks of material misstatement of the financial statements, whether due to fraud or error, design and perform audit procedures responsive to those risks, and obtain audit evidence that is

sufficient and appropriate to provide a basis for our opinion. The risk of not detecting a material misstatement resulting from fraud is higher than for one resulting from error, as fraud may involve collusion, forgery, intentional omissions, misrepresentations, or the override of internal control.

- Obtain an understanding of internal control relevant to the audit in order to design audit procedures that are appropriate in the circumstances, but not for the purpose of expressing an opinion on the effectiveness of the PCC's internal control.
- Evaluate the appropriateness of accounting policies used and the reasonableness of accounting estimates and related disclosures made by the Members of the PCC.
- Conclude on the appropriateness of the Members of the PCC use of the going concern basis of accounting and, based on the audit evidence obtained, whether a material uncertainty exists related to events or conditions that may cast significant doubt on the PCC's ability to continue as a going concern. If we conclude that a material uncertainty exists, we are required to draw attention in our auditor's report to the related disclosures in the financial statements or, if such disclosures are inadequate, to modify our opinion. Our conclusions are based on the audit evidence obtained up to the date of our auditor's report. However, future events or conditions may cause the PCC to cease to continue as a going concern.
- Evaluate the overall presentation, structure and content of the financial statements, including the disclosures, and whether the financial statements represent the underlying transactions and events in a manner that achieves fair presentation.

We communicate with those charged with governance regarding, among other matters, the planned scope and timing of the audit and significant audit findings, including any significant deficiencies in internal control that we identify during our audit.

Use of our report

This report is made solely to the Members of the PCC, as a body, in accordance with Part 4 of the Charities (Accounts and Reports) Regulations 2008. Our audit work has been undertaken so that we might state to the Members of the PCC those matters we are required to state to them in an auditor's report and for no other purpose. To the fullest extent permitted by law, we do not accept or assume responsibility to anyone other than the PCC and the members of the PCC as a body, for our audit work, for this report, or for the opinions we have formed.

Cansdales Audit LLP

Cansdales Audit LLP

Chartered Accountants and Statutory Auditors

Cansdales Audit LLP is eligible to act as an auditor in terms of section 1212 of the Companies Act 2006.

25 April 2022
Date:

Bourbon Court
Nightingales Corner
Little Chalfont
Bucks
HP7 9QS

Beaconsfield Team Ministry

Consolidated End of Year Financial Statements

Year ending 31st December 2021



BEACONSFIELD PCC

Registered charity no : 1132259

CONSOLIDATED STATEMENT OF FINANCIAL ACTIVITIES

For the year ended 31 December 2021

	Notes	Unrestricted funds £	Designated funds £	Restricted funds £	Total 2021 £	Unrestricted funds £	Designated funds £	Restricted funds £	Total 2020 £
INCOME									
Voluntary income	2.1	346,231	11,740	-	357,971	456,533	4,000	-	460,533
Activities for generating funds	2.2	60,025	184,253	-	244,278	52,097	17,494	135	69,726
Investment income	2.3	2,658	-	-	2,658	3,036	-	-	3,036
Income from charitable activities	2.4	73,275	-	-	73,275	61,973	-	-	61,973
Total Income		482,189	195,993	-	678,182	573,638	21,494	135	595,268
EXPENDITURE									
Fundraising	3.1	38,221	10,332	-	48,553	48,893	2,566	-	51,459
Charitable activities	3.2	524,707	188,869	-	713,576	519,709	29,482	-	549,191
Management costs	3.3	6,638	-	-	6,638	6,600	-	-	6,600
Total Expenditure		569,566	199,200	-	768,767	575,201	32,048	-	607,249
Net Income / (Expenditure) before transfers		(87,377)	(3,208)	-	(90,585)	(1,563)	(10,553)	135	(11,981)
Transfers between funds									-
Other recognised gains / losses									-
Gains/losses on investments	6	12,723	-	-	12,723	5,716	-	-	5,716
Net movement in funds		(74,653)	(3,208)	-	(77,862)	4,153	(10,553)	135	(6,266)
Total funds brought forward		744,371	723,351	5,522	1,473,243	740,218	733,904	5,387	1,479,509
Total funds carried forward		669,718	720,143	5,522	1,395,383	744,371	723,351	5,522	1,473,243

All the PCC's operations are classed as continuing.

The PCC has no recognised gains or losses other than the results for the year.

Notes 1 to 11 form part of the financial statements.

BEACONSFIELD PCC

Registered charity no : 1132259

CONSOLIDATED BALANCE SHEET AT 31 DECEMBER 2021

	Notes	Unrestricted funds £	Designated funds £	Restricted funds £	2021 £	2020 £
FIXED ASSETS						
Tangible assets	5	239,111	666,390	-	905,501	964,899
Investments	6	101,209	-	-	101,209	88,486
		340,320	666,390	-	1,006,710	1,053,385
CURRENT ASSETS						
Debtors	7	18,901	-	-	18,901	21,454
Cash in hand and at bank		262,890	53,753	5,522	322,165	382,044
Short term deposits		120,932	-	-	120,932	118,320
TOTAL CURRENT ASSETS		402,722	53,753	5,522	461,997	521,818
CREDITORS						
Amounts falling due within one year	8	(73,324)	-	-	(73,324)	(101,960)
NET CURRENT ASSETS		329,398	53,753	5,522	388,673	419,858
TOTAL ASSETS less CURRENT LIABILITIES		669,718	720,143	5,522	1,395,383	1,473,243
CREDITORS :						
Amounts falling due after more than one year		-	-	-	-	-
NET ASSETS		669,718	720,143	5,522	1,395,383	1,473,243
FUNDS						
Unrestricted funds	9					
Unrestricted funds		669,718	-	-	669,718	744,370
Designated funds	9.1	-	720,143	-	720,143	723,351
		669,718	720,143	-	1,389,861	1,467,721
Restricted funds	9.2	-	-	5,522	5,522	5,522
		669,718	720,143	5,522	1,395,383	1,473,243

Notes 1 to 11 form part of the financial statements.

APPROVED BY THE MEMBERS OF THE PAROCHIAL CHURCH COUNCIL ON 6th APRIL 2022**AND SIGNED ON THEIR BEHALF BY :**


Rev. Sharon Roberts (Chairman)



Mr David Bulteel (Senior Churchwarden)

BEACONSFIELD PCC

Registered charity no : 1132259

CONSOLIDATED STATEMENT OF CASHFLOWS AT 31 DECEMBER 2021

	Note	2021	2020
		£	£
Net movement in funds		(90,585)	(11,981)
Adjustments for:			
Depreciation	5	59,398	59,398
Investment income	2.3	(2,658)	(3,036)
Decrease/(increase) in trade and other receivables		2,556	(4,102)
Increase/(decrease) in trade and other payables		(28,636)	(1,093)
Net cash from operating activities		(59,925)	39,186
Investing activities			
(Purchase)/Disposal of fixed assets	5	-	-
Other recognised gains/losses		-	-
Investment income	2.3	2,658	3,036
Cash flow from investing activities		2,658	3,036
Net change in cash and cash equivalents		(57,267)	42,222
Cash and cash equivalents at the start of the year		500,364	458,142
Cash and cash equivalents at the end of the year		443,097	500,364
Cash and cash equivalents consists of:		2021	2020
Cash at bank and in hand		322,165	382,044
Short Term Deposits		120,932	118,320
Cash and cash equivalents at 31 December		443,097	500,364

BEACONSFIELD PCC

Registered charity no : 1132259

NOTES TO THE CONSOLIDATED FINANCIAL STATEMENTS

For the year ended 31 December 2021

I. ACCOUNTING POLICIES

These accounting policies apply to the financial statements of the Beaconsfield Team Ministry comprising the Team Parochial Church Council and the District Church Councils of St Mary and All Saints, St. Thomas and St Michael and All Angels. The consolidated figures include the activities of the PCC and the DCCs. The financial statements of all three DCCs are subject to separate independent examination prior to inclusion in the consolidated figures. Where the PCC is referred to in these policies, it is to be understood that this includes a DCC and any sub account as appropriate.

The financial statements have been prepared under the historical cost convention with items recognised at cost of transaction value except for investment assets, which are shown at fair value.

The financial statements have been prepared to give a 'true and fair' view and have departed from the Charities (Accounts and Reports) Regulations 2008 only to the extent required to provide a 'true and fair view'. This departure has involved following the Accounting and Reporting by Charities: Statement of Recommended Practice applicable to charities preparing their accounts in accordance with the Financial Reporting Standard applicable in the UK and Republic of Ireland (FRS 102) issued on October 2019 rather than the Accounting and Reporting by Charities: Statement of Recommended Practice effective from 1 April 2005 which has been withdrawn. The financial statements are prepared in accordance with the Charities Act 2011 and UK Generally Accepted Practice.

The trust constitutes a public benefit entity as defined by FRS 102. The trustees consider that due to sufficient reserves being held there are no material uncertainties about the Trust's ability to continue as a going concern.

Funds

General funds represent the funds of the PCC that are not subject to any restrictions regarding their use and are available for application on the general purposes of the PCC. Funds designated for a particular purpose by the PCC are also unrestricted.

The financial statements include all transactions, assets and liabilities for which the PCC is responsible in law. They do not include the accounts of church groups that owe their main affiliation to another body nor those that are informal gatherings of church members.

Restricted funds may only be used for the purposes for which they have been given.

Income

Voluntary income and capital sources :

Collections are recognised when received by, or on behalf of, the PCC.

Planned giving receivable under gift aid is recognised only when received.

Income Tax recoverable on gift aid donations is recognised when the income is recognised.

Legacies are accounted for as soon as the Church is notified of its legal entitlement, the amount due is quantifiable and its ultimate receipt by the Church is more likely than not.

Funds raised by the events held during the year are accounted for gross.

Sales of books and magazines are accounted for gross.

Other ordinary income

Rental income from the letting of Church premises is recognised when the rental is due.

Income from investments

Dividends and interest are accounted for when received. Tax recoverable on such income is recognised in the same accounting year.

Gains and losses on investments

Realised gains or losses are recognised when investments are sold.

Unrealised gains or losses are accounted for annually on revaluation of investments at 31 December.

Expenditure

Expenditure is accounted for on an accruals basis, inclusive of the VAT which cannot be recovered. Certain expenditure is directly attributable to specific activities and has been allocated to those cost categories. Where these costs are attributable to more than one activity, they have been apportioned to the individual activities on the basis of the time spent by staff on matters related to those activities. Central support costs have been allocated on the basis of resources used and have been apportioned to centres of fundraising, publicity, individual projects within charitable activities and governance costs. Parish Share is paid direct to the Diocese from the PCC. Governance costs comprise all costs relating to the public accountability of the PCC and its compliance with regulatory and good practice. These costs consist of those relating to the statutory audit and are included in management costs.

BEACONSFIELD PCC

Registered charity no : 1132259

NOTES TO THE CONSOLIDATED FINANCIAL STATEMENTS (continued)

For the year ended 31 December 2021

I ACCOUNTING POLICIES (continued)

Grants

Grants and donations are recognised when paid over, or when awarded, if that award creates a binding obligation on the PCC.

Activities directly relating to the work of the Church

Any parish share unpaid at 31 December is provided for in these financial statements as an operational (although not legal) liability and is shown as a creditor in the balance sheet.

Pension

Pension costs consist of payments made by the PCC to employees' personal pension schemes. These costs are charged against the results of the year in which they are made.

Fixed Assets

Consecrated property and moveable Church furnishings

Consecrated land and beneficed property is excluded from the financial statements by s.10(2) of the Charities Act 2011.

Moveable church furnishings held by the clergy and churchwardens on special trust for the PCC, and which require a special faculty for disposal, are accounted for as inalienable property unless consecrated. They are listed in the churches' inventories which can be inspected at any reasonable time. For inalienable property acquired prior to 2001 there is insufficient cost information available and therefore such assets are not valued in the financial statements. Items acquired since 1 January 2001 have been capitalised and depreciated in the financial statements over their currently anticipated useful economic life on a straight line basis.

All expenditure incurred during the year on consecrated or beneficed buildings and moveable Church furnishings, whether maintenance or improvement, is written off as expenditure in the SOFA and separately disclosed.

Other property

Other property is included in the financial statements at cost.

Depreciation on the Fitzwilliams Centre is provided at 2% p.a. of its cost. Depreciation on 26 Candlemas Mead is provided at 2% p.a. of the cost of the building which is taken to be two thirds of the cost of the property.

Depreciation on St Michael's Church Community & Resource Centre is provided at 2% of its cost.

Other fixtures, fittings and office equipment

Equipment used within Church premises is depreciated on a straight line basis over 5 years. Individual items with a purchase price of £2,000 or less are written off when the asset is acquired. Computer equipment and software is written off when acquired.

Investments

Investments are valued annually at fair (market) value as 31 December.

Current assets

Amounts owing to the PCC at 31 December in respect of fees, rents or other income are shown as debtors less provision for any amounts that may prove uncollectable. Short term deposits include cash held on deposit either with the CBF Church of England Funds or at the Bank.

BEACONSFIELD PCC

Registered charity no : 1132259

NOTES TO THE CONSOLIDATED FINANCIAL STATEMENTS (Continued)

For the year ended 31 December 2021

2. ANALYSIS OF INCOME

	Unrestricted Funds £	Designated Funds £	Restricted Funds £	2021 Total £	2020 Total £
2.1 Voluntary income					
Planned giving					
Tax efficient giving	204,678	2,052	-	206,730	239,749
Tax recoverable	50,251	9,183	-	59,434	61,768
Other planned giving	44,425	505	-	44,930	50,885
Collections at services	664	-	-	664	1,243
Sundry donations	-	-	-	-	-
	300,018	11,740	-	311,758	353,645
Other voluntary income					
BCET	11.1 33,500	-	-	33,500	39,500
HMRC furlough grant	-	-	-	-	5,774
Donations, appeals etc	2,713	-	-	2,713	5,613
Legacies	10,000	-	-	10,000	56,000
	46,213	-	-	46,213	106,888
	346,231	11,740	-	357,971	460,533
2.2 Activities for generating funds					
Church house/land lettings	33,993	-	-	33,993	20,049
Church hall lettings	-	-	-	-	-
Beaconsfield Community Mag	16,188	-	-	16,188	18,613
Social activities	2,612	-	-	2,612	9,528
Dove Café	-	184,253	-	184,253	-
Other fundraising	7,232	-	-	7,232	21,536
	60,025	184,253	-	244,278	69,726
2.3 Investment income					
Interest	86	-	-	86	552
Dividends	2,572	-	-	2,572	2,484
Realised gain/(loss) on investment	-	-	-	-	-
	2,658	-	-	2,658	3,036
2.4 Income from charitable activities					
Fees	25,636	-	-	25,636	24,271
Church hall lettings	47,639	-	-	47,639	37,702
Bookstall / Children	-	-	-	-	-
	73,275	-	-	73,275	61,973
Total Income	482,189	195,993	-	678,182	595,268

BEACONSFIELD PCC

Registered charity no : 1132259

NOTES TO THE CONSOLIDATED FINANCIAL STATEMENTS (Continued)

For the year ended 31 December 2021

3. ANALYSIS OF EXPENDITURE

	Unrestricted Funds £	Designated Funds £	Restricted Funds £	2021 Total £	2020 Total £
3.1 Fundraising					
Church hall and other property running costs	924	2,566	-	3,490	11,304
Community magazine	21,365	-	-	21,365	19,573
Charitable activities/Fees-Weddings	15,319	-	-	15,319	13,694
Social activities	614	7,766	-	8,379	6,887
	38,221	10,332	-	48,553	51,459
3.2 Charitable activities					
Parish Share	235,955	-	-	235,955	236,307
Clergy					
Expenses	7,158	-	-	7,158	6,592
Ordinand/Curate/Family Worker	11,594	-	-	11,594	22,218
	18,752	-	-	18,752	28,810
Church running costs					
Salaries & honoraria	48,416	1,227	-	49,643	47,733
Church running expenses	35,008	-	-	35,008	31,268
Church maintenance	11,126	-	-	11,126	10,921
Church improvements & major repairs	-	-	-	-	-
Depreciation furniture & fittings	24,350	14,557	-	38,907	38,907
Depreciation freehold property	-	-	-	-	-
Training	-	-	-	-	37
Team expenses	963	-	-	963	(807)
	119,863	15,784	-	135,646	128,058
Church halls					
Running expenses/maintenance	49,922	-	-	49,922	38,459
Dove Café building costs	-	158,064	-	158,064	-
Depreciation	3,001	14,924	-	17,925	17,925
	52,923	172,988	-	225,911	56,384
Youth work					
Cost of youth activities	-	-	-	-	-
	-	-	-	-	-
Church management & administration					
Parish Office	42,602	-	-	42,602	41,547
Printing, stationery & telephone	7,643	97	-	7,740	9,968
Bank charges	960	-	-	960	927
Other team costs	6,478	-	-	6,478	-
	57,682	97	-	57,779	52,442
3.2 Expenditure on charitable activities	485,175	188,869	-	674,043	502,001
<i>carried forward</i>					

BEACONSFIELD PCC

Registered charity no : 1132259

NOTES TO THE CONSOLIDATED FINANCIAL STATEMENTS (Continued)

For the year ended 31 December 2020

3. ANALYSIS OF EXPENDITURE (Continued)

	Unrestricted Funds £	Designated Funds £	Restricted Funds £	2021 Total £	2020 Total £
3.2 Expenditure on charitable activities	485,175	188,869	-	674,043	502,001
<i>Brought forward</i>					
Grants					
Church overseas					
Missionary societies	7,594	-	-	7,594	6,225
Relief and development agencies	12,656	-	-	12,656	12,450
Home missions & Church societies	7,350	-	-	7,350	7,825
DCC Outside Giving	11,933	-	-	11,933	20,689
	39,533	-	-	39,533	47,189
Total Charitable activities	524,707	188,869	-	713,576	549,191
3.3 Expenditure on management costs					
Audit	6,638	-	-	6,638	6,600
TOTAL EXPENDITURE	569,566	199,200	-	768,767	607,249

4. STAFF COSTS

	2021	2020
Staff Salaries & Honoraria	106,009	111,381
Employers NIC	3,785	4,180
Pension	1,006	1,168
	110,800	116,729

No clergy (who are considered key management) or trustees received remuneration in the year from the DCC's or PCC
None of the employees were paid at a rate of £60,000 per annum or more. Team members were reimbursed travelling and other expenses totalling £6,592 (2019: £7,640)

	2021	2020
St Mary's Clergy	4,500	3,854
St Michael's Clergy	0	31
St Thomas' Clergy	477	423
Youth work	638	2,284
	5,615	6,592

There were no other disclosable expenses in respect of Team members or persons closely connected with the PCC. In accordance with the practice of the Church of England, the clergy is remunerated by the Diocese of Oxford and the costs are included in the Diocesan quota in note 3.2.

The average number of key staff employed during the year was 6 (2020 : 7)

The year ended with 2 Clergy, 1 Associate Priest, 0 Youth & Outreach Worker, 1 Licenced Lay Minister. 6 part time office and buildings managers and hall administrators were also employed.

Jeremy Brooks, Team Rector left St Mary's 30th September 2021.

There are also number of other posts e.g. Organist, Choir Director, Community Magazine Editor, Hall Booking administrator who receive payments / honoraria.

BEACONSFIELD PCC

Registered charity no : 1132259

NOTES TO THE CONSOLIDATED FINANCIAL STATEMENTS (Continued)

For the year ended 31 December 2021

5. FIXED ASSETS

Tangible fixed assets for use by the Team	Freehold Property £	Fixtures & fittings £	Total £
Cost as at 1 January 2021	976,975	436,379	1,413,354
Addition	-	-	-
Cost as at 31 December 2021	976,975	436,379	1,413,354
Depreciation as at 1 January 2021	325,752	122,704	448,456
Charge for the year	17,490	41,907	59,398
Depreciation as at 31 December 2021	343,242	164,611	507,853
Net book value at 1 January 2021	651,223	313,675	964,899
Net book value at 31 December 2021	633,733	271,768	905,501

Freehold property**Freehold land and buildings at 26 Candlemas Mead, Beaconsfield**

This property, used by the Curate/Families Worker when in post, was acquired with the aid of a mortgage from the Beaconsfield Church Educational Trust together with interest free loans all of which have now been fully repaid. The property was insured for £291,155 in 2021. Depreciation is charged at 2% p.a. on the cost of the buildings which is taken to be 2/3 of the total cost of the property.

The Old Rectory

The Parochial Church Council sold a 199 year lease on the Old Rectory in 1994 and at the end of this period, its use returns to St. Mary's. The proceeds of the sale formed part of the financing of the construction of the Fitzwilliams Centre.

St. Thomas' Church Hall

Under the provisions of Financial Reporting Standard 15, the Church Hall was revalued at £nil, and the PCC is of the opinion that this valuation continues to be appropriate under FRS102.

The Fitzwilliams Centre, Beaconsfield

The Fitzwilliams Centre is vested in Diocesan Trustees (Oxford) Limited on behalf of the PCC. The District Church Council of St. Mary's is responsible for the maintenance of the Centre and receives the income from lettings. The property is insured for £1,726,203. Depreciation is charged at 2% p.a. on the cost of the building.

St Michael's Church Community & Resource Centre

The Church Hall which is over 50 years old and the Community and Resource Centre (CCRC) plus contents are insured for £2,900,000 in total. Depreciation is being charged on the CCRC only at 2% p.a.

BEACONSFIELD PCC

Registered charity no : 1132259

NOTES TO THE CONSOLIDATED FINANCIAL STATEMENTS (Continued)

For the year ended 31 December 2021

	2021 £	2020 £
6 INVESTMENTS		
St Mary's CofE Investment Fund	<u>101,209</u>	<u>88,486</u>
We invested £100k in the CBF Church of England Investment Fund in July 2014. In 2018 we sold part of the investment releasing £60k cash and realising £15,120 profit. The remaining investment has regained its value and is now valued at £101,209. An unrealised gain of £12,723 is being reported in the year.		
Investment value at 1 January 2021	88,486	
Sale		
Realised Gain		
Unrealised gain / (loss)	12,723	
Investment at 31 December 2021	<u>101,209</u>	
Initial Investment at July 2014	100,000	
Sale	(60,000)	
Realised Gain	15,120	
Unrealised Gain	40,373	
Investment at 31 December 2021	<u>101,209</u>	
7 DEBTORS		
Sundry debtors	-	7,201
Income tax recoverable	16,903	11,303
Prepayments	1,997	2,949
	<u>18,901</u>	<u>21,454</u>
8 LIABILITIES : amounts falling due in less than one year		
Sundry creditors and accruals	67,816	92,652
Community magazine	-	-
Audit and accountancy	-	-
Outside giving	5,509	9,308
	<u>73,324</u>	<u>101,960</u>

BEACONSFIELD PCC

Registered charity no : 1132259

NOTES TO THE CONSOLIDATED FINANCIAL STATEMENTS (Continued)

For the year ended 31 December 2021

9

9.1 Designated funds**Fund names**

Fitzwilliams Centre

26 Candlemas Mead

St Michael's Fixed Assets Fund

St Thomas Café Fund

Purpose

A meeting centre for the Parish and community

Accommodation for youth & outreach worker/curate

To hold the remaining fixed assets of the churches

Development of Community Café

Fund namesBalance
b/forward
01/01/2021Incoming
resourcesOutgoing
resources

Transfers

**Balance
c/forward
31/12/2021**

£

£

£

£

£

St Mary's Fitzwilliams Centre

336,000

-

(11,000)

-

325,000

PCC 26 Candlemas Mead

148,207

-

(2,566)

-

145,641

St Michael's Fixed Asset Fund

214,231

-

(18,482)

-

195,749

Designated Fixed Assets Fund

698,438

-

(32,048)

-

666,390

St Thomas' Café Fund

24,912

195,993

(167,152)

-

53,753**723,350****195,993****(199,199)**

-

720,143**9.2 Restricted funds****Fund names****St. Michael's**

Bulrushes

Garden of Remembrance

Purpose

For Toddler Group / Youth Work

For Remembrance Garden upkeep

Restricted funds**Fund name**Balance
b/forward
01/01/2021Incoming
resourcesOutgoing
resources

Transfers

**Balance
c/forward
31/12/2021**

£

£

£

£

£

St. Michael's

Bulrushes

3,153

-

-

3,153

Garden of Remembrance

2,369

-

-

-

2,369**5,522**

-

-

-

5,522

BEACONSFIELD PCC

Registered charity no : 1132259

NOTES TO THE CONSOLIDATED FINANCIAL STATEMENTS (Continued)

For the year ended 31 December 2021

10 CONTINGENT LIABILITIES AND CAPITAL COMMITMENTS

There were no contingent liabilities in the Team or the PCC at the year end (2020: £nil)

11 CONNECTED PERSONS

- 11.1** The Beaconsfield Church Education Trust is a registered charity no: 1048607. The Trust gave grants of £33,500 (2020: £39,500) to the Beaconsfield PCC during the year. The Rector and Churchwardens of St Mary's, St Michael's and St. Thomas' are Trustees of the Trust.
- 11.2** The Friends of St.Mary's is a registered charity no: 1094574, whose trustees are appointed by the District Church Council of St.Mary's. The object of the charity is to broaden the support of St Mary's beyond the immediate congregation and to use funds raised for the fabric of the Church and Churchyard as well as to assist the wider mission of the Church.
- 11.3** Some Trustees made regular giving donations during the year totalling £26,147 (2020: £40,187). There are no conditions attached to these donations.