

# PCC ANNUAL REPORT 2020



## A View from the Team...

“We are in this together” has been a popular saying since the early days of the pandemic. Here in the Beaconsfield Team Ministry, it has proved to be much more than a slogan, it has become the pathway to not only surviving these difficult times, but to finding innovative ways to sustain and nourish ourselves spiritually. By pooling our gifts – creative and practical – lay and ordained leaders have worked together, making it possible for many of us to worship together in our homes for far longer than anyone could have imagined when we went into the first lockdown, back in March last year. Our buildings may have been locked down, but the Church of God has been very much alive!



While so many of our other activities and events were paused, it does seem that we have truly lived out St Paul’s teaching of the church as a body, all with different and inter-dependent parts to play, appreciating the skills and gifts others possess which complement, rather than compete, with our own. Another popularised saying that has emerged goes something like this: “We cannot go back to how things were before, we need to find a new normal.” There is surely something of the Gospel message in that: “the new creation has come: the old has gone, the new is here!” [2 Corinthians 5:17] and “be transformed by the renewing of your mind” [Romans 12:2].

So looking ahead, we expect to continue finding new ways to benefit from being and doing more things together, not to become singular, but to honour, cherish, enhance and complement those things which are different and wonderfully distinctive in each other’s churches.





It won't be right to combine everything, but in some of our working practices, especially in certain areas of governance, accounting and administration, there may well be helpful ways to reduce bureaucracy and streamline our support services, ultimately for the benefit of those whom we serve and support. to be reduced not increased!

And we can't offer a perspective from the Team without mention of The Dove Café, which we are now confident will become a reality in 2021, thanks to the courageous vision of St Thomas' and to energy, expertise and financial gifts drawn from across all three of our

churches. The remodelling and reopening of those doors will create a place of real engagement with our Beaconsfield community. And it will be a significant sign of hope that by working together, our churches can truly transform the lives of all God's people.

At the time of compiling this report, our Team Rector, Revd Jeremy Brooks, is away from the parish on discretionary leave granted by the Bishop. Much of what we have achieved together as a team over the last year has been possible because of Jeremy's collaborative and enabling approach. We are immensely grateful and wish him well during this time of reflection and restoration.

Sharon. Michael

## St Thomas'

At St Thomas', in the midst of a national lockdown, we remain deeply committed to serving the needs of the Holtspur community. Despite numerous setbacks, the building of a community café inside our church remains on track. We are immensely grateful for the many incredibly generous individual donations and institutional grants that have made this project possible. Building work is out to tender and we are looking forward to opening the doors of The Dove Café sometime in 2021. It will be a place where people find friendship, connection, peace, shelter, a new start and the presence of God's Spirit. We are immensely grateful to Alison, Derek, Ruth, Gill and Steve for their commitment and energy throughout the year, which means we have every confidence of opening in 2021.

In common with other places of worship, we have not been able to meet for fellowship within the church building, but we have made the best of the situation by turning the premises into a hub for the vital work of Better Connected Beaconsfield and the One Can foodbank, distributing food and essential supplies to



the local community. Over recent weeks, the number of households receiving deliveries has increased and at the end of January it stood at 21. We salute the work of Ruth and her team in supporting this initiative.

Despite not being physically present as a congregation at St. Thomas' for more than five weeks during the past year, we have continued to contribute to Team on-line services, whether by offering readings, prayers and contributions to services every day, or simply by being able to log in and to share worship with our friends across the Anglican community in Beaconsfield.



The church and its garden has been open for private contemplation and prayer.

Speaking of the garden, we are hugely grateful to Fi, who has masterminded a great transformation in the area between the vicarage, the hall and the church. We are just a few weeks away from what she predicts will be 'a riot of colour', as springtime indicates an awakening from the current woes in many ways. Fi's initiatives, backed by several willing helpers, will ensure that the new café spills outside with the most pleasant ambience.



We eagerly anticipate an end to the current Covid-19 restrictions and look forward to the resumption of the initiatives and plans that were snatched away last March. The café will support and enhance all such initiatives for young and old alike. Reaching young families is a primary focus of our determination to find ways of encouraging local people to join the St Thomas' community. The well-established Tom's Tots playgroup often attracted more than 50 children on Tuesdays and we trust that they will return. We are developing a number of additional options for parents and carers by building on this recognised brand. Tom's Tots on Sundays began last February and this extension of the



popular midweek group, once resumed, will mean that a number of families will bring their toddlers with their older siblings on Sunday mornings. We will be able to build on the work of our on-line storytellers in the hope of offering a weekly Storytime in the church. We hope Fusion Youth Church will resume as a lively Sunday evening group for 10 to 14-year-olds with an ambition to 'Shape body, mind and spirit'. We also predict that our resumed Sunday services will continue to benefit



frequently from the leading and preaching of six able and creative people. We will hold regular prayers during the week. And at Kiln Court sheltered housing complex there will be monthly services followed by tea and coffee. We also look forward to a resumption of many other activities. We hope that the ecumenical Oasis Bereavement Support Group will return monthly in our hall for an opportunity to talk and get to know each other over tea and cakes; that the local Senior Citizens social club once more makes use of our church and hall



to enjoy a programme of talks, music and occasional outings; that residents are invited to various social events, including our popular film-show tea parties. For help in directing and co-ordinating all this, and for much more, we owe great thanks to our Vicar, Michael, and to his DCC team, wardens and lay leaders.

Our supported charities show that our outreach stretches beyond the local community to the needs of the wider world. Among many others, they include Mission Aviation Fellowship, an international Christian aviation organisation serving around 30 developing countries to reach people living in some of the world's most isolated communities and Food For The Hungry, a Christian organisation engaged in sustainable development work in some of the poorest regions of the world. We are a friendly, welcoming and caring church community, and, as you can see, our wish is that we grow together in faith with support and encouragement.

## St Michael's

*"2020 is going to be another year of excitement and exploration as together we try to find out what God is doing in our town, our parish, and we try to join in!"*

These were Sharon's concluding words to the 2019 Church Report for St Michael's. This year, she feels inclined to say if there is anyone out there who knows what God was up to in 2020 could they please tell her!

However, in all seriousness, that seems to be precisely the challenge as we look back

on last year and try to identify the good which has come out of it, along with the heartache. It seems destined always to be a mix of the two. Much of the care for the community expressed through activity such as Film Night, T Club, Men's and Ladies' Lunches and Bulrushes, was paused in March and remained that way for the rest of the year. Terribly sad as that was (and is) it did perhaps provide opportunity for those who worked tirelessly over many years in these – and many other - aspects of church and community life to take a deep breath and relax or maybe explore doing something new.

"Something new" certainly sums up our worship life at St Michaels and across the Team in this past year. Within days of the first lockdown, worship for Mothering Sunday and beyond was devised online, our first steps into the world of virtual worship where, as has been said elsewhere in this report, we have achieved, as a Team, much more than would ever have been possible as individual churches. Our thanks to everyone at St Mary's and St Thomas's who has contributed to that.



At St Michael's our newly introduced Churchsuite database – connected to what was already in place at St Mary's and was soon to be introduced at St Thomas's – made it possible to communicate electronically with all our church families and hopefully we have been able to keep everyone informed of news and developments through our weekly newsletters and occasional letters.

Our informal pastoral care of one another – by picking up the phone or sending each other texts –

went well beyond our novel way of sharing the Peace on a Sunday morning to day to day care for one another, along with undertaking many small acts of kindness, which has been mirrored across our communities.

When we finally returned to our church building for worship there was a new look to all our services. Sunday offerings changed week by week with (hopefully) all tastes catered for – Prayer Book, Common Worship and, twice a month, completely new all age worship called “2gether”, which does what it says on the tin – bringing together in one worshipping community everyone aged 9 months to 90 (and beyond!). Our younger St Michael’s families have been enthusiastic about contributing to this service and to on line worship, through the readings and prayers or, most recently, recording craft activities or stories for the very young. It has been a way for us to engage with everyone in our community and the “catch up” option for on line worship allows families to engage with it at a time of their choosing.

St Michael’s is blessed with a superb and sophisticated sound desk and AV equipment and this year much more use has been made of both, thanks to the establishment of a tech team to devise and deliver screen based worship.

Of course, in that worship there was great sadness in not being able to sing but our gifted organist Alan Lewis played the hymns in such a way that they sounded as

if we were! For the choir, and for Alan as technician, the big triumph of 2020 was the recording of 37 tracks of Christmas music which we enjoyed all too briefly at Christmas but which now gives us an on line library for future years.

During Advent, we enjoyed the church’s artistic talents with an





outdoor “Advent Calendar”, with some particularly imaginatively interpretations by the children! We look forward to making greater use of our outdoor spaces for worship in the months to come.

Finally, comings and goings. We have said goodbye to Mary Peters and Peter Simmonds, who have both moved from Beaconsfield. We thank them for faithful and loving service over many years. We have, though, welcomed James Robson, a member of St Thomas’s Church and its Hon Treasurer, who doubled up in that role as our Hon Treasurer with effect from January 2021. With Zoe Lawrence, St Michael’s Office Manager, now undertaking the book keeping for St Thomas’ as well as St Michael’s, this was another example of Team working which saves both human and financial resource.

Notwithstanding the financial concerns which affect St Michael’s and so many people at this time we look forward with hope, faith and confidence to, yes, what God has in store!



Illustration by Tim Baynes

## St Mary's

Covid 19 gave us a sharp reminder that church is not just about a building but about people and community. Mostly people couldn't go to church, so we took the church to the people!

Before 'lockdown' we managed to squeeze in:

- Our annual Memorial Service in January.
- A couple of poppy making workshops as we produced poppies in many colours and styles in preparation for cascades to commemorate VE Day and VJ Day 75<sup>th</sup> anniversaries.
- Our regular pattern of worship continued in the first three months of 2020 before being disrupted by Covid at the end of March.



We then provided, working wherever possible as a team:

- Compline which has been recorded every evening since 1st April.
- We opened the church for private prayer as soon as we were allowed by Government legislation.
- Midday prayers between April and July online,
- 10am service each Sunday between April and October – online.
- 9am communion service in church from 26th July to 1st October
- 10am live communion service in St Mary's from 8th October. Services were halted in November at the start of the second lockdown and returned online.
- Midweek communion since mid-July on Thursday mornings
- Morning Prayer on Zoom at 9am every day.



We had virtual commemorations of the following with the poppy cascades on display.

- VE Day 75th anniversary in May
- VJ Day in August
- Remembrance Day – from the war memorial

We collected toys for the Church Army in December.

Walk the Life of Jesus Prayer Walk in the churchyard.

Advent and Christmas services, following the lifting of lockdown, were held in church as ticketed events with all requests met and no one was turned away.

- Carol Service on 20<sup>th</sup> December
- Communion services
- 11.30 on Christmas Eve
- 8 a.m. and 10 a.m. Christmas Day

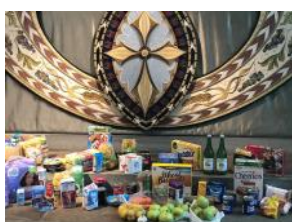
Additional support via Michael Johnson's online calendar, Cathy Smith's reflections and we also distributed to each member of the congregation the C.of.E Booklet Comfort and Joy.

Sadly, we were unable to welcome families into our annual Crib Services, but the services were made available online.

Other services offered online during the year included.

- Mothering Sunday
- Christingle
- Harvest was a live Family Communion in church – with the gifts going to help our friends in Newham.

We were able to host the usual school Carol Services – for online transmission.



Baptisms, weddings, and funerals continue to be a strong part of church life although 2020 has been marked by cancellations and rearrangements rather than events which have taken place. During the year there have been:

8 baptisms. This compares with 36 in 2019.

48 funerals - 15 in church

7 weddings

The FWC remained available to support groups and the FWC team took the opportunity to carry out a lot of maintenance and decoration.

In January 2020 Denise Kelly stepped down as leader of the Pastoral care Team after many years in the role. The Rev Margot Suter took over the role and, with help from Heather Graham, ran an 8-week training course between January and March.

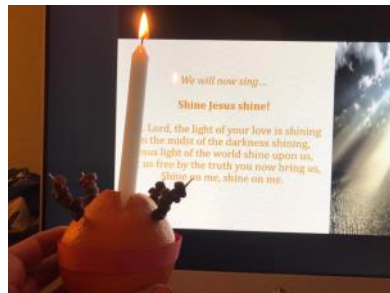
The emphasis of the Pastoral Care team then changed and regular phone calls replaced visits. The clergy identified 150 people who they felt would most appreciate regular contact and the Pastoral Care team divided the list and kept in touch.

Outreach and support for the most vulnerable continued via the support given by individuals, and the churches to Better Connected Beaconsfield

Many of our groups within St Mary's turned to regular Zoom meetings to keep in touch and support each other. The groups have included House Groups, Choir and the Bell Ringers.

We said goodbye to Gareth, Jenna, Elijah and Phoebe Morley as they moved to All Saints. David Hackett, our church organist, also left for pastures new after many years of service.

We welcomed Aaron King as our organist and are already enjoying his music.





2020 has been a challenging year for all of us, but for The Dove Café at St Thomas' it has been an astounding year of progress. During the pandemic, St Thomas' church became a beacon of hope for local people and our plans for a café in the church to serve our community have captured the moment perfectly. St Thomas' opened wide its doors in the early summer and transformed itself into a Pop-Up Larder serving struggling families and individuals in the local community. The Dove Café will be a lasting legacy to the relationships we have built and the reputation for hospitality, kindness and selfless service St Thomas' has achieved through this initiative throughout the year.

The café team has been working hard to bring our vision of an open, welcoming church to life. The national lockdowns have caused some inevitable delays but it has given us time to take stock, plan carefully and make sure we have every detail right.

We began fundraising in earnest early in the year and have been overwhelmed by the response to our grant applications and enormously humbled by the generosity of individuals in our three churches and in the town. It seems The Dove Café has offered a beacon of hope for us all in the dark days of the pandemic. We set ourselves an ambitious target to raise £200,000 by the end of the year and to date we have secured £186,000 in grants, gifts and pledges. We cannot thank our sponsors and supporters enough.

We have been actively marketing our café to spread the word about what we are trying to achieve. We have made use of our fresh, warm, loving logo and created a new strap line which sums up everything we are about.





## **Coffee and kindness**

## **the perfect blend**

On the practical side, the generosity of our donors has meant we have been able confidently to finalise the works specification and put it out to tender. We are now working with a local kitchen company to create a fresh new kitchen for our cafe, with a local flooring company to find the best way to cover our old cork floor and with an audio installation company to help us bring sound and vision to our café. We have been working closely with the Diocesan Advisory Committee and expect to have the full Faculty in place by mid-March. We are now looking for help with web-site design, social media marketing and general promotion to raise awareness in our town and draw people in. All of these strands are coming together and now that we have the funds, we are in a position to begin work as soon as the tender process is concluded, which could be as early as April or May 2021. This means we could be ready to open in the late summer or early autumn.

There is still a lot to do. We know there will be difficulties and unanticipated problems, but we as a team have seen God's hand at work in this project. We ask for continued prayer for every aspect of our work and for wisdom and guidance in our daily decisions. The need for socially isolated local people to get out of their houses and find somewhere warm, welcoming, unjudgmental and kind has never been greater.

We look forward with confidence and trust in God to the day The Dove Café will be ready to serve them and everyone in our community with the perfect blend of coffee and kindness.

## Youth and outreach worker report

Mid-February last year I was writing this report and preparing for the school Easter workshops, unaware of the pandemic that was about to sweep the world, and how our lives would change. It is hard to process that a year on we are still being so impacted by this virus.

Last year as the first lockdown took hold I was furloughed for six months. I returned to my role part time at the beginning of the school year in September 2020 and although the range of my job description stayed much the same, as restrictions tightened once more this wasn't, of course, to be.

As we have spent much of the last six months in further lockdown it has been a time of imagining new ways of carrying out my ministry and fulfilling my role.

On my return we were trying to see how we could reconnect to families and young people at this time and one of the first tasks was to put together an online service for families. We started producing this monthly and then increased this to a weekly offering. It has been interesting to see how families and young people have viewed these services. The joy of an online service is that it is available to access at any time and has meant that more families have been able to engage than we normally see in church which is great. Personally, I have really enjoyed exploring different ways of presenting and learning new technical skills as part of this. Of course the down side to this approach and what we have really missed is meeting with and seeing others.

We trialled a zoom service as another way to meet remotely, and the zoom Christingle service stands out as a time that families were able to meet with each other and with God in a special way at a difficult time.



Another initiative that had been on my heart for a while was Outdoor church and the slight lifting of restrictions seemed to lend itself to this. I love the idea of using our calling to stewardship of creation as an opportunity to bring people into a closer relationship with God, the world, and each other. We met on the first Sunday of the month and managed two meetings before further restrictions were imposed. I look forward to growing this community as we emerge from lockdown.

It has been difficult to maintain relationships with schools as visitors have not been able to attend so 1:1 mentoring, wellbeing visits and assemblies have not happened. I continue to be involved with Holtspur school as a Community Governor and was part of the interview panel for the new Head teacher. BHS Christian Union has not met in person although I was able to support the leaders in an Advent bible study on zoom.

Fusion Youth has not been able to meet at all as a group although I have maintained relationships with the young people on an ad hoc basis. I look forward to meeting with and engaging our inspiring young people and families in some community projects as and when we are able.

As I write this year the sun is shining and I am hopeful that we will be able to meet in person soon and I so look forward to all the positives that will bring. In the meantime I am taking time now to build my strength in the Lord and to try and discern how, as a team of churches, we might be called to respond to the wider community as we emerge.



### Advent Calendar \* Online \*

Every day you'll be able to open one more window revealing part of the story, told by different characters...



**Beginning  
Tuesday 1<sup>st</sup> December**

WHERE? Go to

<https://www.youtube.com/channel/UCBeaconsfieldTeamMinistry/playlist>  
then click on Advent Calendar



## Beaconsfield Community Magazine

A very different year! We are even more grateful than usual to our subscribers, amazing band of distributors & deliverers, advertisers and our many contributors who continued to support the magazine throughout this unusual year.

We thank the various members of the clergy and parishioners who contribute to the monthly 'God slot' and offer particular thanks to Heather Duffy and Rhiannon Scott who kindly conduct interviews during the year. Although inevitably these were restricted in 2020, we did meet Andrea Smyth, Railway Chaplain, Matt Jones, part of the leadership team at Hope Church and Daniel Crump of the Greyhound. George Mardall, the 'resident' photographer, continues to make a significant contribution with his many photos and the editor is very grateful for his input.

The first two issues of 2020 were printed as usual but the April & May issues could only be published on the website, while the printers were closed. From June onwards printing and delivery returned to normal.

### Editorial

In his Note from the Team Rector in the combined January/February issue of the magazine, Jeremy said, "2020 is likely to be a momentous year for our country...". At the time he was of course thinking of our departure from the EU but as we now know the word Brexit was rapidly replaced by Covid, lockdown and quarantine (apparently the most looked up word in the Cambridge dictionary in 2020).

As the year began it looked as though there would be no shortage of events in 2020. A great deal of planning had been done for a major two-week Community Festival, incorporating the commemoration of the 75th anniversary of VE Day over the Bank Holiday weekend. Plans were also being formed to mark VJ Day later in the year. Fortunately nothing could stop the knitting and crocheting of thousands of poppies for the magnificent cascades.

However, as things turned out the year was anything but normal and most events were cancelled. Faced with lockdown at the end of March the April issue (published on 30th March) was immediately out-of-date. Beaconsfield was closed along with everywhere else and the May issue was a blank canvas, although closure in itself created a story with photos of the deserted town filling some of the pages. Then the Beaconsfield WI got to work, making laundry bags and scrubs to support frontline workers in the NHS, another unexpected story. This was followed by

several local residents sending in news of their various lockdown projects. Life without Cinema became a regular feature, where the Beaconsfield Film Society suggested films to watch at home.

Charities needed help more than ever so they were keen to contribute articles. Better Connected Beaconsfield sprang into action, working with the Rugby Club to provide essential items for the most vulnerable and the Pop-Up-Larder was set up.

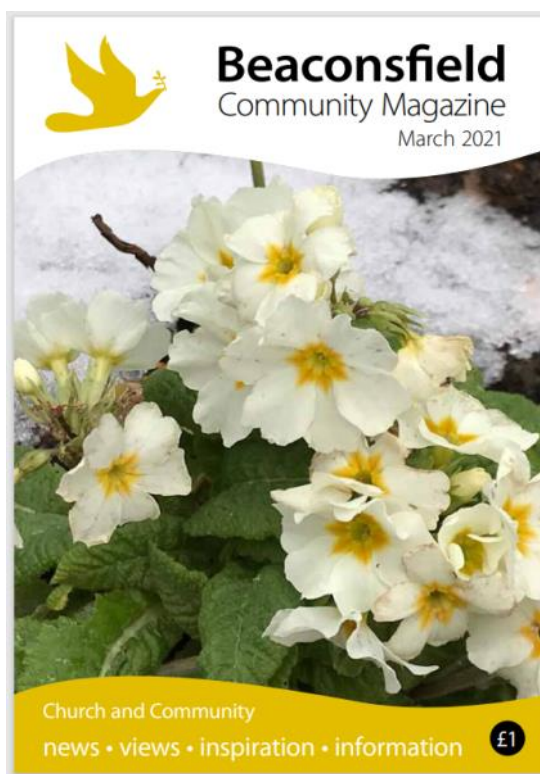
We featured children from the St Mary's Toddler group showing the new talents they were learning during lockdown and also followed the reflections of several local residents.

The Black Lives Matter campaign spread across the world and around 200 people in Beaconsfield joined a march to unite against racism.

In August, when life was a little more normal the VJ commemoration went ahead and the town also celebrated various heroes who had volunteered in many ways during lockdown. When schools opened again the pupils of Beaconsfield High didn't forget others and they began a major campaign to help the homeless.

One of the features of this year has been the development of closer relations with the local schools. We had an article from Davenies in May and then the Beaconsfield High project in August. We then had an interview with the new Headteacher at Holtspur School in the first issue of this year and currently interviews are in progress with the new Head at both The Beaconsfield School and Butlers Court.

As it transpired the editor should not have worried about how to fill the pages in the magazine with all activities cancelled, as so many very different but very good things happened.





A major initiative for this year will be The Dove, a vision for St Thomas' church complex to become the heart and the hub of the Beaconsfield community. Let's hope progress can continue on this project.

## Advertising

At the beginning of the first lockdown all the advertisers were contacted to explain how the magazine would be operating going forward. We encouraged them to 'stick with us' and thanked them for their past and hopefully future support. We received some very understanding and supportive feedback. The advertising income in 2020 was down on the previous year but actually quite close to the average for the past 5 years. 2021 could be a different story as during the year we lost a number of advertisers who were no longer able to do business and at the year-end four others did not renew. Admittedly one of them was through retirement but another was a full page colour advert which brought in £1,200 in 2020. The better news is that although there are fewer enquiries for small line adverts, recently we have taken bookings for display adverts from three new advertisers whose business is unaffected by lockdown.

**Subscriptions and Distribution** We thank Sally Masters very much for her continuing role in handling the subscriptions and monthly distribution of the magazine. With no magazines being printed in April or May, we endeavoured as far as possible to inform subscribers that the BCM was still available online.

**Distributors and Deliverers** The wonderful Alison Posgate retired after 25 years of distributing and delivering! David Hawkins took on her sizeable list. He is very efficient, supportive and switched on! Alison received a card and flowers. She has been a huge support over the years and will be sorely missed. Anne Hatter, Margaret Skrimshire, Gill Homer and John Kelly also retired and were thanked with cards and flowers/wine. With others stepping in to take their place, by August the delivery team was almost 100% again. Inevitably the number of subscribers has fallen; sadly we have had some deaths, some subscribers have moved away and a few no longer wish to subscribe. With a number of businesses and the library closed we are currently distributing fewer copies of the magazine but hopefully things will change as the year progresses

**Financials** We are very grateful to our extremely efficient treasurer, Nicki Edwards who keeps a close watch on our financials. With lower income from advertising, a similar income from subscriptions and higher admin expenses, expenditure for the year exceeded income by approx. £950. This compared with a surplus in the

previous year.

Production and Printing Our business continues to be handled very efficiently by Michael Yorke at Turville printers. He was a great support in a difficult year.

## Committee Meetings

The committee, consisting of representatives from all the churches in Beaconsfield, is invited to attend meetings twice a year.

## DETAILS FROM THE PARISH REGISTERS



## Outside Giving

The Outside Giving Committee normally meets twice a year to review and pray for the work of the chosen charities. Support for events planned on behalf of the charities is organised and recent literature distributed for display in our churches. This year there has been one online meeting.

Due to Covid lockdowns and restrictions on meetings there have been no changes to the charities supported by the team. During the year representatives from several of those charities have been able to send video updates that have been included in our streamed Sunday services. Also, Rev Sharon Roberts prayed for all the charities in the streamed Compline Service on 21st September. It would be helpful to pray regularly for our charities in church services.

### Beaconsfield Advisory Centre (BAC)

BAC received £600 as requested by them.

### Sharon International Ministries (SIM)

25% - Tom Holyer – [www.simindianruralschool.org.uk](http://www.simindianruralschool.org.uk)

SIM is an Indian Charity responsible for providing free education to children from the lowest castes (Dalit/Untouchable) families in a rural part of SE India. Schools in India were closed for most of 2020 due to the pandemic. Now only the 3 Senior top classes are open. In England SIM raises money to pay the teachers salaries.

The photos show the contrast between school before Covid, and what the senior class looks like now.



## Newham Renewal Programme

25% - Bill Edwards – [www.renewalprogramme.org.uk](http://www.renewalprogramme.org.uk)

Peter Laing has taken over the programme in 2020 and is very keen to further develop our relationship. The Refugee and Migrant Project (RAMP) exists to support refugees, migrants and asylum seekers, living in Newham, who are seeking refuge from disadvantaged conditions..



When permitted, donations of food and clothing have been taken to the programme, pictured.

## Mission Aviation Fellowship

25% - Derek Moores – [www.maf-uk.org](http://www.maf-uk.org)

Mission Aviation Fellowship (MAF) is an international Christian organisation whose mission is to fly light aircraft, and to use other technologies, to bring help and hope to people in some of the world's poorest communities.

MAF's 75th anniversary celebrations had to be postponed and it is hoped the event in Westminster Central Hall will take place in 2021.



Although flying was seriously reduced in most programmes due to the Corona virus, when flying was allowed covid test kits and PPE were carried to remote areas, pictured.

## EMBRACE the Middle East (Bible Lands)

12.5% - Rose Shimwell – [www.embraceme.org](http://www.embraceme.org)

EMBRACE the Middle East (Bible Lands) is a local mission in Amersham. EMBRACE works through Christian Partners in the Middle East, they provide humanitarian assistance to the poor and needy in local communities. Our focus with Embrace are the Syrian refugees in Lebanon. In August 2020 the explosion in Beirut had a devastating impact on the population and recovery will take many years.



The annual lecture this year was an interview with John McCarthy which was streamed online.

Beit el Nour, meaning 'house of light and hope', works with vulnerable women and girls, including Syrian refugees, in Lebanon.

## New Generation Burundi

12.5% - Deborah Sanders

Our support for this project in Burundi continues. Regular income is so helpful to this charity which has a continuing need to support the many street children and orphans in one of the world's poorest countries. New Generation believes that children and young people are the future of Burundi. Alice, pictured, is encouraged in her wonderful talent in singing and leading worship. She sadly suffered an injury and has only one leg but this does not stop her enjoying life in all its fulness and making the most of every opportunity.





## The Beaconsfield Team Ministry

The Team Ministry comprises the Parish Churches of St Mary and All Saints, St Michael and All Angels and St Thomas, Holtspur within the Benefice of Beaconsfield. The Parochial Church Council has assigned to the District Church Councils (DCCs) all the functions of the Parochial Church Council of the parish except for the holding of real estate, the provision of youth activities and Team activities including the Community Magazine, the Alpha course and Marriage Preparation.

The total number on the Electoral Roll for 2020 was 558 (as at October 2020)

The address for PCC correspondence is:

The Fitzwilliams Centre

Windsor End,

Beaconsfield,

Buckinghamshire HP9 2JW

Telephone number: 01494 676690

Email: [info@stmarysbeaconsfield.org.uk](mailto:info@stmarysbeaconsfield.org.uk)

### **Auditors**

Cansdales Audit LLP

Bourbon Court

Nightingales Corner

Little Chalfont

Buckinghamshire

HP7 9QS

### **Bankers**

Lloyds TSB plc

3 Burkes Parade

Beaconsfield

Buckinghamshire

HP9 1NR

### **Legal Advisers**

Winckworth Sherwood

16 Beaumont Street

Oxford

OX1 2LZ

## List of members of the PCC (Trustees) for 2020

The Revd Dr Jeremy Brooks Team Rector  
The Revd Michael Johnson Team Vicar of St Thomas's  
The Revd Sharon Roberts Team Vicar of St Michael's  
The Revd Margot Suter Associate Priest, St Mary's  
Mrs Hazel Chow Licensed Lay Minister  
Mrs Michelle Fotherby Youth & Outreach Worker  
Mrs Nicki Edwards PCC Treasurer  
Mr Bill Edwards Churchwarden of St Mary's  
Mrs Harriet Baldwin Churchwarden of St Mary's, PCC Secretary  
Mrs Daphne Scott Churchwarden of St Michael's (until October 2020)  
Mr John Gibbs Churchwarden of St Michael's  
Mr Trevor Sharkey Churchwarden of St Thomas' & St Thomas' Deanery Synod representative  
Mrs Fiona Collins St Thomas's Churchwarden of St Thomas' (from October 2020)  
Mr Andrew Farncombe St Mary's Deanery Synod representative  
Mrs Deborah Sanders St Mary's Deanery Synod representative (until October 2020)  
Professor Derek Portwood, St Mary's Deanery Synod representative (from October 2020)  
Mr Eddie Weiss St. Mary's Deanery Synod representative  
Mrs Amanda Champion St Mary's PCC  
Mrs Pam Crawford St Mary's PCC  
Mr Christopher Cook St. Michael's PCC & Deanery Synod representative (until October 2020)  
Mr Peter Simmonds St. Michael's PCC & Deanery Synod representative (until October 2020)  
Miss Frances Hall St Michael's PCC & Deanery Synod representative  
Mr Chris Lockett St Michael's PCC representative (until October 2020)  
Mrs Mary Bischoff St Michael's PCC representative (from October 2020)  
Mrs Alison Hart St Thomas's PCC representative

## Structure, governance and management

The Parochial Church Council is a corporate body established by the Church of England. The PCC operates under the Parochial Church Council Powers Measure. The PCC is registered with the Charity Commission under registered no: 1132259. The PCC confirms that Members have referred to the Charity Commission's guidance on public benefit, in particular the specific guidance on charities for the advancement of religion, when reviewing the charity's aims and objectives and in planning future activities. The PCC carries out these objectives by activities conducted under its direct control and through those activities assigned by it to the individual churches within the team ministry. Such activities are described in more detail in the report.

The appointment of PCC members is governed by and set out in the Church Representation Rules. The PCC has a Standing Committee whose members are the Rector (Chair), the Team Vicars and Churchwardens from each church (Co-Vice Chairs), the Hon. Secretary and the Hon. Treasurer.

The PCC holds 5 meetings a year with a Standing Committee meeting prior to each PCC meeting. There is a standing item of business at the first PCC meeting following the APCM in which existing trustees are reminded of, and new trustees are instructed of, their responsibilities as trustees. All three DCCs provide representatives on the PCC and report regularly to the PCC on major topics and issues in the individual churches. The PCC prepares consolidated financial statements incorporating the accounts of the PCC and the three churches. A local firm of Accountants is appointed as Auditors.

In 2020, PCC meetings considered financial matters, including the budgets, the Parish share and overall team expenses particularly in the light of the Covid 19 pandemic.

PCC meetings received regular reports from DCCs and considered other team matters such as outside giving, youth and outreach work and the Community Magazine as regular agenda items.

## Risk

The major risks to which the PCC is exposed are identified in risk control registers maintained by the three Team churches and are regularly reviewed and systems or procedures have been established to manage those risks. Risks such as health & safety, lone working and safeguarding are mitigated by regular checks/reviews and ensuring that appropriate controls and insurances are in place. St Mary's manages its investments as part of a balanced portfolio, so that it is protected in the event of those investments losing value.

## Related charities

The PCC has the following related charities:

- [The Beaconsfield Church Educational Trust \(BCET\)](#) is registered charity no.1048607. The Trustees of the BCET are the Rector, Team Vicars of St Thomas' and St Michael's and Churchwardens of the 3 Team churches in the Parish of Beaconsfield. The PCC received grants to support the work of the Beaconsfield Team Ministry during the year which including towards housing costs for the Ordinand.
- [St Mary and All Saints Beaconsfield Development Fund \(The Friends of St. Mary's\)](#) is a registered charity No.1094574 whose trustees are appointed by the District Church Council of St. Mary & All Saints. The object of the charity is to broaden the support of St. Mary's beyond the immediate congregation and to use funds raised for the fabric of the Church and Churchyard as well as to assist the wider mission of the Church.

## Property

Within the Parish there are 2 church houses. The PCC owns a house at 26 Candlemas Mead which was occupied by Youth & Outreach worker Michelle Fotherby and her family until August 2020 from which time it was let commercially.

The BCET owns 27 Crossways, which was occupied by Gareth Morley, St Melitus Ordinand, and his family until June 2020 with St Mary's DCC paying rent to the BCET, whilst also receiving a grant from the BCET to cover most of the cost of this. The house was rented out commercially from August 2020.

Each of the Team churches is responsible for the management and maintenance of

its church centre or hall: the Fitzwilliams Centre, St Michael's hall and resource rooms and St Thomas' Hall. Reports on the church halls are included in the DCC reports to the PCC.

## PCC Reserves Policy

It is the policy of the PCC to have unrestricted cash reserves in each DCC (after setting aside funds earmarked for specific projects, invested in fixed assets or restricted for particular purposes) of at least six months normal recurring unrestricted expenditure in line with prudent practice.

At 31 December 2020 the unrestricted cash reserves represented 10.9 months (2019: 9.9 months). This is a consolidation of 3 individual churches and the Team Ministry each with varying levels of cash cover and future spending requirements.

## PCC Financial Review

The consolidated financial statements include the financial statements of the three DCCs and also the Team Ministry which records the expenditure by the PCC on those activities for which it assumes responsibility and to which the three churches contribute funds.

The total Income for 2020 was £595,268 (2019: £635,202) – almost all of which was unrestricted income. The St Thomas' Café income is designated income & Bulrushes restricted income. Legacies of £56,000 were recognised in the year. In 2019 St Mary's received a large legacy and recognised £20,000 of this income in the same year. The remainder remains held on the balance sheet for future use and none was recognised in 2020. Regular Giving increased to 59% of unrestricted incoming resources due mainly to the substantial drop in hall lettings (£80,000) during 2020 (2019: 50%).

The total Expenditure for 2020 was £607,249, lower than in 2019 (£674,940). More than half of this saving comprised Church Maintenance and Repairs. Fewer church services and reduced hall bookings resulted in further savings in running costs. Excluding depreciation, unrestricted expenses were £575,201. Unrestricted expenses for the PCC stood at £65 per hour in 2020 (£73 per hour in 2019). In 2020 there was an unrealised gain on Investment Income of £5,716 (2019: £12,886) and Dividends of £2,484 (2019: £2,411). The total deficit for the year was £6,266



(2019: £26,852) with unrestricted income and expenditure showing a surplus of £4,152 (2019: £1,269)

The total funds on the Balance Sheet at 31 December 2020 were £1,473,243 (2019: £1,479,509) of which £5,522 was Restricted and £723,351 was Designated. Unrestricted funds stood at £744,370.

The unrestricted cash at bank at 31 December 2020 was £469,930 (2019: £449,337).

### Going Concern Note: April 2020

As a result of the COVID-19 pandemic, each of the churches within the Team assessed their financial stability and produced individual Notes for their own accounts indicating how the pandemic was likely to affect their own finances.

With all the churches and public buildings in lockdown for several months of 2020 and subject to restrictions on gathering for the remaining part of the year, there was clearly an impact on the finances of all our three churches and this is set out in the Financial Statements.

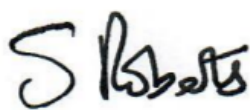
## Statement of the responsibilities of the members of the PCC

The members of the Parochial Church Council are required to prepare financial statements for each financial year which give a true and fair view of the PCC's financial activities during the year and of its financial position at the end of the year. In preparing financial statements giving a true and fair view, the members should follow best practice and:

- select suitable accounting policies and then apply them consistently;
- make judgements and estimates that are reasonable and prudent;
- state whether applicable accounting standards and statements of recommended practice have been followed, subject to any departures disclosed and explained in the financial statements;
- prepare the financial statements on the going concern basis unless it is inappropriate to presume that the PCC will continue in operation.

The members of the PCC are responsible for keeping accounting records which both disclose with reasonable accuracy and enable them to ascertain the financial position of the PCC and which enable them to ensure that the financial statements comply with the Charities Act 2011, the Statement of Recommended Practice "Accounting and Reporting by Charities" issued in 2015 and the Church Accounting Regulations 2006. They are also responsible for safeguarding the assets of the PCC and hence for taking reasonable steps for the prevention and detection of fraud and other irregularities.

Approved by the Parochial Church Council on 14 April 2021 and signed on its behalf by:

— 

CHAIR

## **Independent Auditors Report to the Parochial Church Council of Beaconsfield Team Ministry**

### **Opinion**

We have audited the financial statements of Beaconsfield Team Ministry for the year ended 31 December 2020 which comprise of a Statement of Financial Activities, Balance Sheet, Cashflow and notes numbered 1 to 11 to the financial statements including a summary of significant accounting policies. The financial reporting framework that has been applied in their preparation is applicable law and United Kingdom Accounting Standards, including Financial Reporting Standard 102 The Financial Reporting Standard applicable in the UK and Republic of Ireland (United Kingdom Generally Accepted Accounting Practice).

In our opinion the financial statements:

- give a true and fair view of the state of the PCC's affairs as at the 31 December 2020, and of its incoming resources, for the year ended;
- have been properly prepared in accordance with United Kingdom Generally Accepted Accounting Practice; and,
- have been prepared in accordance with the requirements of the Charities Act 2011.

### **Basis for opinion**

We conducted our audit in accordance with the International Standards of Auditing (UK) (ISAs (UK)) and applicable law. Our responsibilities under those standards are further described in the Auditor's responsibilities for the audit of the financial statements section of our report. We are independent of the PCC in accordance with the ethical requirements that are relevant to our audit of the financial statements in the UK including the FRC's Ethical Standard, and we have fulfilled our other ethical responsibility in accordance with these requirements and believe that the audit evidence we have obtained is sufficient and appropriate to provide a basis for our opinion.

### **Conclusions relating to going concern**

We have nothing to report in respect of the following matter in relation to which the ISAs (UK) require us to report to you where:

- the Members of the PCC's use of the going concern basis of accounting in the preparation of the financial statements is not appropriate; or
- the Members of the PCC have not disclosed in the financial statements any identified material uncertainties that may cast significant doubt about the PCC's ability to continue to adopt the going concern basis of accounting for a period of at least twelve months from the date when the financial statements are authorised for issue.

### **Other information**

The Members of the PCC are responsible for the other information. The other information comprises the information included in the member's annual report, other than the financial statements and our auditor's report thereon. Our opinion on the financial statements does not cover the other information and, except to the extent otherwise explicitly stated in our report, we do not express any form of assurance conclusion thereon.

In connection with our audit of the financial statements, our responsibility is to read the other information and, in doing so, consider whether the other information is materially inconsistent with the financial statements or our knowledge obtained in the audit or otherwise appears to be materially

misstated. If we identify such material inconsistencies or apparent material misstatements, we are required to determine whether there is a material misstatement in the financial statements or a material misstatement of the other information. If, based on the work we have performed, we conclude that there is a material misstatement of this other information, we are required to report that fact.

We have nothing to report in this regard.

### **Matters on which we are required to report by exception**

We have nothing to report in respect of the following matters in relation to which the Charities (Accounts and Reports) Regulations 2008 require us to report to you if, in our opinion:

- the information given in the financial statements is inconsistent in any material respect with the PCC annual report; or
- sufficient accounting records have not been kept; or
- the financial statements are not in agreement with the accounting records; or
- we have not received all the information and explanations we require for our audit.

### **Responsibilities of the Members of the PCC**

As explained more fully in the Statement of Responsibilities of the Members of the PCC, the members are responsible for the preparation of financial statements which give a true and fair view, and for such internal control as the members determine is necessary to enable the preparation of financial statements that are free from material misstatement, whether due to fraud or error.

In preparing the financial statements, the Members of the PCC are responsible for assessing the PCC's ability to continue as a going concern, disclosing, as applicable, matters related to going concern and using the going concern basis of accounting unless the Members of the PCC either intend to liquidate the PCC or to cease operations, or have no realistic alternative but to do so.

### **Auditor's responsibilities for the audit of the financial statements**

We have been appointed as auditor under section 144 of the Charities Act 2011 and report in accordance with regulations made under section 154 of that Act.

Our objectives are to obtain reasonable assurance about whether the financial statements as a whole are free from material misstatement, whether due to fraud or error, and to issue an auditor's report that includes our opinion. Reasonable assurance is a high level of assurance, but is not a guarantee that an audit conducted in accordance with ISAs (UK) will always detect a material misstatement when it exists. Misstatements can arise from fraud or error and are considered material if, individually or in the aggregate, they could reasonably be expected to influence the economic decisions of users taken on the basis of these financial statements.

### **Independent Auditor's Report to the Parochial Church Council of Beaconsfield Team Ministry (continued)**

As part of an audit in accordance with ISAs (UK), we exercise professional judgement and maintain professional scepticism throughout the audit. We also:

- Identify and assess the risks of material misstatement of the financial statements, whether due to fraud or error, design and perform audit procedures responsive to those risks, and obtain audit evidence that is sufficient and appropriate to provide a basis for our opinion. The

risk of not detecting a material misstatement resulting from fraud is higher than for one resulting from error, as fraud may involve collusion, forgery, intentional omissions, misrepresentations, or the override of internal control.

- Obtain an understanding of internal control relevant to the audit in order to design audit procedures that are appropriate in the circumstances, but not for the purpose of expressing an opinion on the effectiveness of the PCC's internal control.
- Evaluate the appropriateness of accounting policies used and the reasonableness of accounting estimates and related disclosures made by the Members of the PCC.
- Conclude on the appropriateness of the Members of the PCC use of the going concern basis of accounting and, based on the audit evidence obtained, whether a material uncertainty exists related to events or conditions that may cast significant doubt on the PCC's ability to continue as a going concern. If we conclude that a material uncertainty exists, we are required to draw attention in our auditor's report to the related disclosures in the financial statements or, if such disclosures are inadequate, to modify our opinion. Our conclusions are based on the audit evidence obtained up to the date of our auditor's report. However, future events or conditions may cause the PCC to cease to continue as a going concern.
- Evaluate the overall presentation, structure and content of the financial statements, including the disclosures, and whether the financial statements represent the underlying transactions and events in a manner that achieves fair presentation.

We communicate with those charged with governance regarding, among other matters, the planned scope and timing of the audit and significant audit findings, including any significant deficiencies in internal control that we identify during our audit.

### **Use of our report**

This report is made solely to the Members of the PCC, as a body, in accordance with Part 4 of the Charities (Accounts and Reports) Regulations 2008. Our audit work has been undertaken so that we might state to the Members of the PCC those matters we are required to state to them in an auditor's report and for no other purpose. To the fullest extent permitted by law, we do not accept or assume responsibility to anyone other than the PCC and the members of the PCC as a body, for our audit work, for this report, or for the opinions we have formed.

Date:

Bourbon Court  
Nightingales Corner  
Little Chalfont  
Bucks  
HP7 9QS

Cansdales Audit LLP  
Chartered Accountants and Statutory Auditors

Cansdales Audit LLP is eligible to act as an auditor in terms of section 1212 of the Companies Act 2006.



Beaconsfield Team Ministry

Consolidated End of Year Financial Statements

Year ending 31st December 2020



**BEACONSFIELD PCC**

Registered charity no : 1132259

**CONSOLIDATED STATEMENT OF FINANCIAL ACTIVITIES**

For the year ended 31 December 2020

	Notes	Unrestricted funds £	Designated funds £	Restricted funds £	Total 2020 £	Unrestricted funds £	Designated funds £	Restricted funds £	Total 2019 £
<b>INCOME</b>									
Voluntary income	2.1	456,533	4,000	-	<b>460,533</b>	424,942	2,160	-	<b>427,102</b>
Activities for generating funds	2.2	52,097	17,494	135	<b>69,726</b>	134,411	1,258	450	<b>136,119</b>
Investment income	2.3	3,036	-	-	<b>3,036</b>	4,830	-	-	<b>4,830</b>
Income from charitable activities	2.4	61,973	-	-	<b>61,973</b>	67,092	-	59	<b>67,151</b>
<b>Total Income</b>		<b>573,638</b>	<b>21,494</b>	<b>135</b>	<b>595,268</b>	<b>631,275</b>	<b>3,418</b>	<b>509</b>	<b>635,202</b>
<b>EXPENDITURE</b>									
Fundraising	3.1	48,893	2,566	-	<b>51,459</b>	63,868	-	-	<b>63,868</b>
Charitable activities	3.2	519,709	29,482	-	<b>549,191</b>	572,887	32,048	-	<b>604,935</b>
Management costs	3.3	6,600	-	-	<b>6,600</b>	6,137	-	-	<b>6,137</b>
<b>Total Expenditure</b>		<b>575,201</b>	<b>32,048</b>	<b>-</b>	<b>607,249</b>	<b>642,892</b>	<b>32,048</b>	<b>-</b>	<b>674,940</b>
<b>Net Income / (Expenditure) before transfers</b>		<b>(1,563)</b>	<b>(10,553)</b>	<b>135</b>	<b>(11,981)</b>	<b>(11,617)</b>	<b>(28,630)</b>	<b>509</b>	<b>(39,738)</b>
Transfers between funds									-
Other recognised gains / losses									-
Gains/losses on investments	6	5,716	-	-	<b>5,716</b>	12,886	-	-	<b>12,886</b>
<b>Net movement in funds</b>		<b>4,152</b>	<b>(10,553)</b>	<b>135</b>	<b>(6,266)</b>	<b>1,269</b>	<b>(28,630)</b>	<b>509</b>	<b>(26,852)</b>
<b>Total funds brought forward</b>		<b>740,218</b>	<b>733,904</b>	<b>5,387</b>	<b>1,479,509</b>	<b>738,949</b>	<b>762,534</b>	<b>4,878</b>	<b>1,506,361</b>
<b>Total funds carried forward</b>		<b>744,370</b>	<b>723,351</b>	<b>5,522</b>	<b>1,473,243</b>	<b>740,218</b>	<b>733,904</b>	<b>5,387</b>	<b>1,479,509</b>

All the PCC's operations are classed as continuing.

The PCC has no recognised gains or losses other than the results for the year.

Notes 1 to 11 form part of the financial statements.

**BEACONSFIELD PCC**

Registered charity no : 1132259

**CONSOLIDATED BALANCE SHEET AT 31 DECEMBER 2020**

	Notes	Unrestricted funds £	Designated funds £	Restricted funds £	2020 £	2019 £
<b>FIXED ASSETS</b>						
Tangible assets	5	266,460	698,438	-	<b>964,899</b>	1,024,298
Investments	6	88,486	-	-	<b>88,486</b>	82,770
		<u>354,946</u>	<u>698,438</u>	<u>-</u>	<u><b>1,053,385</b></u>	<u>1,107,068</u>
<b>CURRENT ASSETS</b>						
Debtors	7	21,454	-	-	<b>21,454</b>	17,352
Cash in hand and at bank		351,610	24,912	5,522	<b>382,044</b>	328,065
Short term deposits		118,320	-	-	<b>118,320</b>	130,077
<b>TOTAL CURRENT ASSETS</b>		<u>491,384</u>	<u>24,912</u>	<u>5,522</u>	<u><b>521,818</b></u>	<u>475,494</u>
<b>CREDITORS</b>						
Amounts falling due within one year	8	(101,960)	-	-	<b>(101,960)</b>	(103,053)
<b>NET CURRENT ASSETS</b>		<u>389,424</u>	<u>24,912</u>	<u>5,522</u>	<u><b>419,858</b></u>	<u>372,441</u>
<b>TOTAL ASSETS less CURRENT LIABILITIES</b>		744,370	723,351	5,522	<b>1,473,243</b>	1,479,509
<b>CREDITORS :</b>						
Amounts falling due after more than one year		-	-	-	-	-
<b>NET ASSETS</b>		<u><b>744,370</b></u>	<u><b>723,351</b></u>	<u><b>5,522</b></u>	<u><b>1,473,243</b></u>	<u><b>1,479,509</b></u>
<b>FUNDS</b>						
Unrestricted funds	9					
Unrestricted funds		744,370	-	-	<b>744,370</b>	740,218
Designated funds	9.1	-	723,351	-	<b>723,351</b>	733,904
		<u>744,370</u>	<u>723,351</u>	<u>-</u>	<u><b>1,467,721</b></u>	<u>1,474,122</u>
Restricted funds	9.2	-	-	5,522	<b>5,522</b>	5,387
		<u><b>744,370</b></u>	<u><b>723,351</b></u>	<u><b>5,522</b></u>	<u><b>1,473,243</b></u>	<u><b>1,479,509</b></u>

Notes 1 to 11 form part of the financial statements.

**APPROVED BY THE MEMBERS OF THE PAROCHIAL CHURCH COUNCIL ON 14th APRIL 2021  
AND SIGNED ON THEIR BEHALF BY :**

\_\_\_\_\_  
Rev. Sharon Roberts (Chairman)

\_\_\_\_\_  
Harriet Baldwin (PCC Secretary)

**BEACONSFIELD PCC**

Registered charity no : 1132259

**CONSOLIDATED STATEMENT OF CASHFLOWS AT 31 DECEMBER 2020**

	<b>Note</b>	<b>2020</b>	<b>2019</b>
		<b>£</b>	<b>£</b>
<b>Net movement in funds</b>		<b>(11,981)</b>	<b>(39,738)</b>
Adjustments for:			
Depreciation	<b>5</b>	59,398	59,394
Investment income	<b>2.3</b>	(3,036)	(4,830)
Decrease/(increase) in trade and other receivables		(4,102)	5,207
Increase/(decrease) in trade and other payables		(1,093)	28,043
<b>Net cash from operating activities</b>		<b>39,186</b>	<b>48,076</b>
<b>Investing activities</b>			
(Purchase)/Disposal of fixed assets	<b>5</b>	-	-
Other recognised gains/losses		-	-
Investment income	<b>2.3</b>	3,036	4,830
<b>Cash flow from investing activities</b>		<b>3,036</b>	<b>4,830</b>
<b>Net change in cash and cash equivalents</b>		<b>42,222</b>	<b>52,906</b>
<b>Cash and cash equivalents at the start of the year</b>		<b>458,142</b>	<b>405,236</b>
<b>Cash and cash equivalents at the end of the year</b>		<b>500,364</b>	<b>458,142</b>
<b>Cash and cash equivalents consists of:</b>		<b>2020</b>	<b>2019</b>
Cash at bank and in hand		382,044	328,065
Short Term Deposits		118,320	130,077
<b>Cash and cash equivalents at 31 December</b>		<b>500,364</b>	<b>458,142</b>

## **BEACONSFIELD PCC**

Registered charity no : 1132259

### **NOTES TO THE CONSOLIDATED FINANCIAL STATEMENTS**

For the year ended 31 December 2020

#### **I. ACCOUNTING POLICIES**

These accounting policies apply to the financial statements of the Beaconsfield Team Ministry comprising the Team Parochial Church Council and the District Church Councils of St Mary and All Saints, St. Thomas and St Michael and All Angels. The consolidated figures include the activities of the PCC and the DCCs. The financial statements of all three DCCs are subject to separate independent examination prior to inclusion in the consolidated figures. Where the PCC is referred to in these policies, it is to be understood that this includes a DCC and any sub account as appropriate.

The financial statements have been prepared under the historical cost convention with items recognised at cost of transaction value except for investment assets, which are shown at fair value.

The financial statements have been prepared to give a 'true and fair' view and have departed from the Charities (Accounts and Reports) Regulations 2008 only to the extent required to provide a 'true and fair view'. This departure has involved following the Accounting and Reporting by Charities: Statement of Recommended Practice applicable to charities preparing their accounts in accordance with the Financial Reporting Standard applicable in the UK and Republic of Ireland (FRS 102) as amended by the Update Bulletin 1 for accounting periods beginning on or after 1 January 2019 rather than the Accounting and Reporting by Charities: Statement of Recommended Practice effective from 1 April 2005 which has been withdrawn. The financial statements are prepared in accordance with the Charities Act 2011 and UK Generally Accepted Practice.

The trust constitutes a public benefit entity as defined by FRS 102. The trustees consider that due to sufficient reserves being held there are no material uncertainties about the Trust's ability to continue as a going concern.

#### **Funds**

General funds represent the funds of the PCC that are not subject to any restrictions regarding their use and are available for application on the general purposes of the PCC. Funds designated for a particular purpose by the PCC are also unrestricted.

The financial statements include all transactions, assets and liabilities for which the PCC is responsible in law. They do not include the accounts of church groups that owe their main affiliation to another body nor those that are informal gatherings of church members.

Restricted funds may only be used for the purposes for which they have been given.

#### **Income**

Voluntary income and capital sources :

Collections are recognised when received by, or on behalf of, the PCC.

Planned giving receivable under gift aid is recognised only when received.

Income Tax recoverable on gift aid donations is recognised when the income is recognised.

Legacies are accounted for as soon as the Church is notified of its legal entitlement, the amount due is quantifiable and its ultimate receipt by the Church is more likely than not.

Funds raised by the events held during the year are accounted for gross.

Sales of books and magazines are accounted for gross.

#### **Other ordinary income**

Rental income from the letting of Church premises is recognised when the rental is due.

#### **Income from investments**

Dividends and interest are accounted for when received. Tax recoverable on such income is recognised in the same accounting year.

#### **Gains and losses on investments**

Realised gains or losses are recognised when investments are sold.

Unrealised gains or losses are accounted for annually on revaluation of investments at 31 December.

#### **Expenditure**

Expenditure is accounted for on an accruals basis, inclusive of the VAT which cannot be recovered. Certain expenditure is directly attributable to specific activities and has been allocated to those cost categories. Where these costs are attributable to more than one activity, they have been apportioned to the individual activities on the basis of the time spent by staff on matters related to those activities. Central support costs have been allocated on the basis of resources used and have been apportioned to centres of fundraising, publicity, individual projects within charitable activities and governance costs. Parish Share is paid direct to the Diocese from the PCC. Governance costs comprise all costs relating to the public accountability of the PCC and its compliance with regulatory and good practice. These costs consist of those relating to the statutory audit and are included in management costs.



**BEACONSFIELD PCC**

Registered charity no : 1132259

**NOTES TO THE CONSOLIDATED FINANCIAL STATEMENTS (continued)**

For the year ended 31 December 2020

**I ACCOUNTING POLICIES (continued)****Grants**

Grants and donations are recognised when paid over, or when awarded, if that award creates a binding obligation on the PCC.

**Activities directly relating to the work of the Church**

Any parish share unpaid at 31 December is provided for in these financial statements as an operational (although not legal) liability and is shown as a creditor in the balance sheet.

**Pension**

Pension costs consist of payments made by the PCC to employees' personal pension schemes. These costs are charged against the results of the year in which they are made.

**Fixed Assets****Consecrated property and moveable Church furnishings**

Consecrated land and beneficed property is excluded from the financial statements by s.10(2) of the Charities Act 2011.

Moveable church furnishings held by the clergy and churchwardens on special trust for the PCC, and which require a special faculty for disposal, are accounted for as inalienable property unless consecrated. They are listed in the churches' inventories which can be inspected at any reasonable time. For inalienable property acquired prior to 2001 there is insufficient cost information available and therefore such assets are not valued in the financial statements. Items acquired since 1 January 2001 have been capitalised and depreciated in the financial statements over their currently anticipated useful economic life on a straight line basis.

All expenditure incurred during the year on consecrated or beneficed buildings and moveable Church furnishings, whether maintenance or improvement, is written off as expenditure in the SOFA and separately disclosed.

**Other property**

Other property is included in the financial statements at cost.

Depreciation on the Fitzwilliams Centre is provided at 2% p.a. of its cost. Depreciation on 26 Candlemas Mead is provided at 2% p.a. of the cost of the building which is taken to be two thirds of the cost of the property.

Depreciation on St Michael's Church Community & Resource Centre is provided at 2% of its cost.

**Other fixtures, fittings and office equipment**

Equipment used within Church premises is depreciated on a straight line basis over 5 years. Individual items with a purchase price of £2,000 or less are written off when the asset is acquired. Computer equipment and software is written off when acquired.

**Investments**

Investments are valued annually at fair (market) value as 31 December.

**Current assets**

Amounts owing to the PCC at 31 December in respect of fees, rents or other income are shown as debtors less provision for any amounts that may prove uncollectable. Short term deposits include cash held on deposit either with the CBF Church of England Funds or at the Bank.

**BEACONSFIELD PCC**

Registered charity no : 1132259

**NOTES TO THE CONSOLIDATED FINANCIAL STATEMENTS (Continued)**

For the year ended 31 December 2020

<b>2. ANALYSIS OF INCOME</b>		<b>Unrestricted Funds £</b>	<b>Designated Funds £</b>	<b>Restricted Funds £</b>	<b>2020 Total £</b>	<b>2019 Total £</b>
<b>2.1 Voluntary income</b>						
<b>Planned giving</b>						
Tax efficient giving		239,749	-	-	<b>239,749</b>	220,660
Tax recoverable		61,768	-	-	<b>61,768</b>	54,772
Other planned giving		50,885	-	-	<b>50,885</b>	41,760
Collections at services		1,243	-	-	<b>1,243</b>	1,826
Sundry donations		-	-	-	-	10,741
		<b>353,645</b>	-	-	<b>353,645</b>	329,759
<b>Other voluntary income</b>						
BCET	11.1	39,500	-	-	<b>39,500</b>	47,900
HMRC furlough grant		5,774	-	-	<b>5,774</b>	-
Donations, appeals etc		1,613	4,000	-	<b>5,613</b>	29,442
Legacies		56,000	-	-	<b>56,000</b>	20,000
		<b>102,888</b>	<b>4,000</b>	-	<b>106,888</b>	97,342
		<b>456,533</b>	<b>4,000</b>	-	<b>460,533</b>	427,102
<b>2.2 Activities for generating funds</b>						
Church house/land lettings		20,049	-	-	<b>20,049</b>	15,192
Church hall lettings		-	-	-	-	83,517
Beaconsfield Community Mag		18,613	-	-	<b>18,613</b>	22,061
Social activities		9,393	-	135	<b>9,528</b>	14,188
Other fundraising		4,042	17,494	-	<b>21,536</b>	1,161
		<b>52,097</b>	<b>17,494</b>	<b>135</b>	<b>69,726</b>	136,119
<b>2.3 Investment income</b>						
Interest		552	-	-	<b>552</b>	2,419
Dividends		2,484	-	-	<b>2,484</b>	2,411
Realised gain/(loss) on investment		-	-	-	-	-
		<b>3,036</b>	-	-	<b>3,036</b>	4,830
<b>2.4 Income from charitable activities</b>						
Fees		24,271	-	-	<b>24,271</b>	32,567
Church hall lettings		37,702	-	-	<b>37,702</b>	34,574
Bookstall / Children		-	-	-	-	10
		<b>61,973</b>	-	-	<b>61,973</b>	67,151
<b>Total Income</b>		<b>573,638</b>	<b>21,494</b>	<b>135</b>	<b>595,268</b>	<b>635,202</b>

**BEACONSFIELD PCC**

Registered charity no : 1132259

**NOTES TO THE CONSOLIDATED FINANCIAL STATEMENTS (Continued)**

For the year ended 31 December 2020

**3. ANALYSIS OF EXPENDITURE**

	Unrestricted Funds £	Designated Funds £	Restricted Funds £	2020 Total £	2019 Total £
<b>3.1 Fundraising</b>					
Church hall and other property running costs	8,738	2,566	-	11,304	20,335
Community magazine	19,573	-	-	19,573	20,813
Charitable activities/Fees-Weddings	13,694	-	-	13,694	16,803
Social activities	6,887	-	-	6,887	5,917
	48,893	2,566	-	51,459	63,868
<b>3.2 Charitable activities</b>					
<b>Parish Share</b>	236,307	-	-	236,307	227,465
<b>Clergy</b>					
Expenses	6,592	-	-	6,592	7,640
Ordinand/Curate/Family Worker	22,218	-	-	22,218	44,079
	28,810	-	-	28,810	51,719
<b>Church running costs</b>					
Salaries & honoraria	47,733	-	-	47,733	17,934
Church running expenses	31,268	-	-	31,268	35,379
Church maintenance	10,921	-	-	10,921	44,065
Church improvements & major repairs	-	-	-	-	4,254
Depreciation furniture & fittings	24,350	14,557	-	38,907	38,905
Depreciation freehold property				-	2,566
Training	37	-	-	37	75
Team expenses	(807)	-	-	(807)	1,671
	113,501	14,557	-	128,058	144,849
<b>Church halls</b>					
Running expenses/maintenance	38,459	-	-	38,459	53,575
Depreciation	3,001	14,924	-	17,925	17,924
	41,459	14,924	-	56,384	71,499
<b>Youth work</b>					
Cost of youth activities	-	-	-	-	428
	-	-	-	-	428
<b>Church management &amp; administration</b>					
Parish Office	41,547	-	-	41,547	39,359
Printing, stationery & telephone	9,968	-	-	9,968	17,027
Bank charges	927	-	-	927	1,207
Sundry costs				-	220
	52,442	-	-	52,442	57,813
<b>3.2 Expenditure on charitable activities</b>	472,520	29,482	-	502,001	553,773

*carried forward*

**BEACONSFIELD PCC**

Registered charity no : 1132259

**NOTES TO THE CONSOLIDATED FINANCIAL STATEMENTS (Continued)**

For the year ended 31 December 2020

**3. ANALYSIS OF EXPENDITURE (Continued)**

	Unrestricted Funds £	Designated Funds £	Restricted Funds £	2020 Total £	2019 Total £
<b>3.2 Expenditure on charitable activities</b>	<b>472,520</b>	<b>29,482</b>	<b>-</b>	<b>502,001</b>	<b>553,773</b>
<i>Brought forward</i>					
<b>Grants</b>					
Church overseas					
Missionary societies	6,225	-	-	6,225	6,800
Relief and development agencies	12,450	-	-	12,450	13,600
Home missions & Church societies	7,825	-	-	7,825	7,400
DCC Outside Giving	20,689	-	-	20,689	23,362
	47,189	-	-	47,189	51,162
<b>Total Charitable activities</b>	<b>519,709</b>	<b>29,482</b>	<b>-</b>	<b>549,191</b>	<b>604,935</b>
<b>3.3 Expenditure on management costs</b>					
Audit	6,600	-	-	6,600	6,137
<b>TOTAL EXPENDITURE</b>	<b>575,201</b>	<b>32,048</b>	<b>-</b>	<b>607,249</b>	<b>674,940</b>

**4. STAFF COSTS**

	2020	2019
Staff Salaries & Honoraria	111,381	109,256
Employers NIC	4,180	4,189
Pension	1,168	1,043
	<b>116,729</b>	<b>114,488</b>

No clergy (who are considered key management) or trustees received remuneration in the year from the DCC's or PCC  
None of the employees were paid at a rate of £60,000 per annum or more. Team members were reimbursed travelling and other expenses totalling £6,592 (2019: £7,640)

	2020	2019
St Mary's Clergy	3,854	6,000
St Michael's Clergy	31	253
St Thomas' Clergy	423	1,387
Youth work	2,284	
	<b>6,592</b>	<b>7,640</b>

There were no other disclosable expenses in respect of Team members or persons closely connected with the PCC. In accordance with the practice of the Church of England, the clergy is remunerated by the Diocese of Oxford and the costs are included in the Diocesan quota in note 3.2.

The average number of key staff employed during the year was 7 (2019 : 10)

The year ended with 3 Clergy, 1 Associate Priest, 1 Youth & Outreach Worker, 1 Licenced Lay Minister. 6 part time office and buildings managers and hall administrators were also employed.

Gareth Morley completed his studies and left St Mary's in May 2020.

There are also number of other posts e.g. Organist, Choir Director, Community Magazine Editor, Hall Booking administrator who receive payments / honoraria.

**BEACONSFIELD PCC**

Registered charity no : 1132259

**NOTES TO THE CONSOLIDATED FINANCIAL STATEMENTS (Continued)**

For the year ended 31 December 2020

**5. FIXED ASSETS**

<b>Tangible fixed assets for use by the Team</b>	<b>Freehold Property £</b>	<b>Fixtures &amp; fittings £</b>	<b>Total £</b>
<b>Cost as at 1 January 2020</b>	976,975	436,379	<b>1,413,354</b>
Addition	-	-	-
<b>Cost as at 31 December 2020</b>	<b>976,975</b>	<b>436,379</b>	<b>1,413,354</b>
<b>Depreciation as at 1 January 2020</b>	308,262	80,796	<b>389,058</b>
Charge for the year	17,490	41,907	<b>59,398</b>
<b>Depreciation as at 31 December 2020</b>	<b>325,752</b>	<b>122,704</b>	<b>448,456</b>
<b>Net book value at 1 January 2020</b>	<b>668,714</b>	<b>355,583</b>	<b>1,024,296</b>
<b>Net book value at 31 December 2020</b>	<b>651,223</b>	<b>313,675</b>	<b>964,899</b>

**Freehold property****Freehold land and buildings at 26 Candlemas Mead, Beaconsfield**

This property, used by the Curate/Families Worker when in post, was acquired with the aid of a mortgage from the Beaconsfield Church Educational Trust together with interest free loans all of which have now been fully repaid. The property was insured for £291,155 in 2020. Depreciation is charged at 2% p.a. on the cost of the buildings which is taken to be 2/3 of the total cost of the property.

**The Old Rectory**

The Parochial Church Council sold a 199 year lease on the Old Rectory in 1994 and at the end of this period, its use returns to St. Mary's. The proceeds of the sale formed part of the financing of the construction of the Fitzwilliams Centre.

**St. Thomas' Church Hall**

Under the provisions of Financial Reporting Standard 15, the Church Hall was revalued at £nil, and the PCC is of the opinion that this valuation continues to be appropriate under FRS102.

**The Fitzwilliams Centre, Beaconsfield**

The Fitzwilliams Centre is vested in Diocesan Trustees (Oxford) Limited on behalf of the PCC. The District Church Council of St. Mary's is responsible for the maintenance of the Centre and receives the income from lettings. The property is insured for £1,726,203. Depreciation is charged at 2% p.a. on the cost of the building.

**St Michael's Church Community & Resource Centre**

The Church Hall which is over 50 years old and the Community and Resource Centre (CCRC) plus contents are insured for £2,900,000 in total. Depreciation is being charged on the CCRC only at 2% p.a.

**BEACONSFIELD PCC**

Registered charity no : 1132259

**NOTES TO THE CONSOLIDATED FINANCIAL STATEMENTS (Continued)**

For the year ended 31 December 2020

	2020 £	2019 £
<b>6 INVESTMENTS</b>		
St Mary's CofE Investment Fund	<u>88,486</u>	<u>82,770</u>
<p>We invested £100k in the CBF Church of England Investment Fund in July 2014. In 2018 we sold part of the investment releasing £60k cash and realising £15,120 profit. Since selling, the value of the remaining investment has dropped and we have an unrealised loss of £13,951 in the year. The Fund invests in shares which are now valued at £69,885 and cost £55,120 when purchased in 2014.</p>		
Investment value at 1 January 2020	82,770	
Sale		
Realised Gain		
Unrealised gain / (loss)	5,716	
Investment at 31 December 2020	<u>88,486</u>	
Initial Investment at July 2014	100,000	
Sale	( 60,000)	
Realised Gain	15,120	
Unrealised Gain	33,366	
Investment at 31 December 2020	<u>88,486</u>	
<b>7 DEBTORS</b>		
Sundry debtors	7,201	( 4,585)
Income tax recoverable	11,303	19,707
Prepayments	2,949	2,230
	<u>21,454</u>	<u>17,352</u>
<b>8 LIABILITIES : amounts falling due in less than one year</b>		
Sundry creditors and accruals	92,652	73,861
Community magazine	-	7,275
Audit and accountancy	-	5,800
Outside giving	9,308	16,117
	<u>101,960</u>	<u>103,053</u>



**BEACONSFIELD PCC**

Registered charity no : 1132259

**NOTES TO THE CONSOLIDATED FINANCIAL STATEMENTS (Continued)**

For the year ended 31 December 2020

9

**9.1 Designated funds****Fund names**

Fitzwilliams Centre

26 Candlemas Mead

St Michael's Fixed Assets Fund

St Thomas Café Fund

**Purpose**

A meeting centre for the Parish and community

Accommodation for youth &amp; outreach worker/curate

To hold the remaining fixed assets of the churches

Development of Community Café

**Fund names**Balance  
b/forward  
01/01/2020Incoming  
resourcesOutgoing  
resources

Transfers

**Balance  
c/forward  
31/12/2020**

£

£

£

£

£

St Mary's Fitzwilliams Centre

347,000

-

(11,000)

-

**336,000**

PCC 26 Candlemas Mead

150,773

-

(2,566)

-

**148,207**

St Michael's Fixed Asset Fund

232,713

-

(18,482)

-

**214,231**

Designated Fixed Assets Fund

730,486

-

(32,048)

-

**698,438**

St Thomas' Café Fund

3,418

21,494

-

-

**24,912****733,904****21,494****(32,048)****-****723,351****9.2 Restricted funds****Fund names****St. Michael's**

Bulrushes

Garden of Remembrance

**Purpose**

For Toddler Group / Youth Work

For Remembrance Garden upkeep

**Restricted funds****Fund name**Balance  
b/forward  
01/01/2020Incoming  
resourcesOutgoing  
resources

Transfers

**Balance  
c/forward  
31/12/2020**

£

£

£

£

£

**St. Michael's**

Bulrushes

3,018

135

-

-

**3,153**

Garden of Remembrance

2,369

-

-

-

**2,369****5,388****135****-****-****5,522**

**BEACONSFIELD PCC**

Registered charity no : 1132259

**NOTES TO THE CONSOLIDATED FINANCIAL STATEMENTS (Continued)**

For the year ended 31 December 2020

**10 CONTINGENT LIABILITIES AND CAPITAL COMMITMENTS**

There were no contingent liabilities in the Team or the PCC at the year end (2019: £nil)

**11 CONNECTED PERSONS**

- 11.1** The Beaconsfield Church Education Trust is a registered charity no: 1048607. The Trust gave grants of £39,500 (2019: £47,900) to the Beaconsfield PCC during the year. The Rector and Churchwardens of St Mary's, St Michael's and St. Thomas' are Trustees of the Trust.
- 11.2** The Friends of St.Mary's is a registered charity no: 1094574, whose trustees are appointed by the District Church Council of St.Mary's. The object of the charity is to broaden the support of St Mary's beyond the immediate congregation and to use funds raised for the fabric of the Church and Churchyard as well as to assist the wider mission of the Church.
- 11.3** Some Trustees made regular giving donations during the year totalling £40,187 (2019: £34,515). There are no conditions attached to these donations.